



Getting Started with Cisco Vision Dynamic Signage Director Operation

Note: This guide shows Administrator-level privileges only.

This section provides an introduction to some of the basic information to get started using Cisco Vision Director. It includes the following topics:

- [Introduction to the Cisco Vision Director User Interface, page 17](#)
- [Stricter Password Policies, page 18](#)
- [New Default Passwords, page 18](#)
- [Introduction to Cisco Vision Director APIs, page 34](#)
- [Understanding User Roles, page 38](#)

Introduction to the Cisco Vision Director User Interface

This section provides an introduction to various pieces of the UI. Global navigation consists of the following six icons:

- [Library, page 20](#)
- [Login Notification Screens and Lockout, page 23](#)
- [Script Management, page 25](#)
- [Event Management, page 26](#)
- [Designer, page 27](#)
- [Configuration, page 28](#)

Next is the **More** drop-down that provides the following topics:

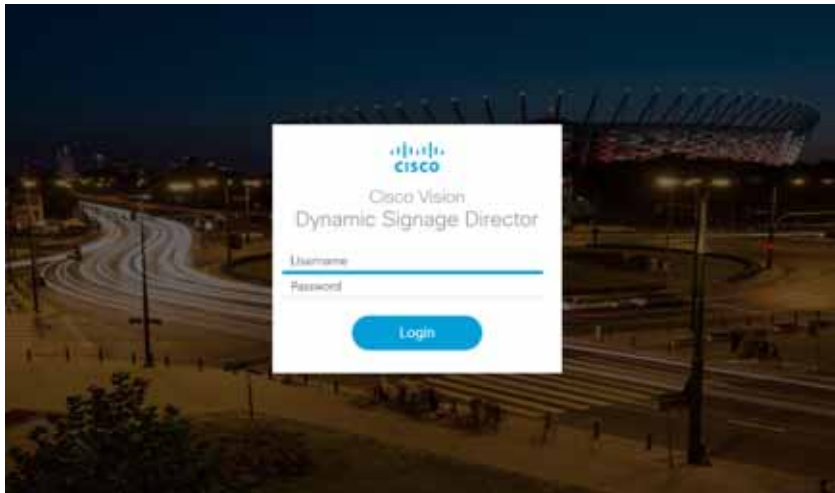
- [Management Dashboard Application, page 30](#)
- [Dynamic Menu Boards Application, page 32](#)
- [Turn TVs Off Application, page 32](#)
- [Manage Software Application, page 33](#)
- [System State Report Application, page 34](#)

Stricter Password Policies

From Release 6.1 and greater, Cisco Vision Dynamic Signage Director users must set stronger passwords. When setting a new password, use the following rules:

- Must have at least 1 lower case character (a-z).
- Must have at least 1 upper case character (A-Z).
- Must have at least 1 numerical character (0-9).
- Must have at least 1 special character. Special characters are @ # \$ %
- Must be 8-20 characters.
- Must not contain any of the following characters: space tab newline linefeed backslash (\).
- Must not contain a character sequence from a predefined list maintained in a dictionary.

Figure 1 Login Screen



New Default Passwords

There is a default web UI administrator user password and there is a DMP administrator password.

The default password for web UI administrator is: **C-V1\$!0n**

Passwords after Upgrading

When upgrading an existing installation, existing passwords are kept.

Passwords after Fresh Install

Role: Administrator

After fresh install, the default administrator user is prompted to change the password on the first login. Starting with Release 6.1, the new password must adhere to the password policies or the password is rejected.

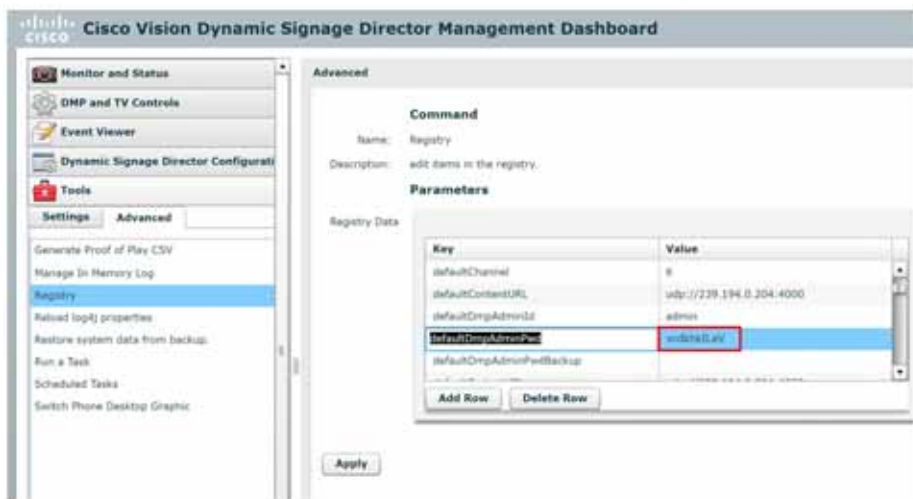
DMP Admin Password

The new default password for the DMP administrator is randomly generated. During a full installation the password isn't reset.

To find the random DMP password value:

1. Go to **More > Management Dashboard > Tools drawer > Advanced tab > Registry**.
2. In the Parameters list of Registry Data, scroll down to **defaultDmpAdminPwd** (Figure 2 on page 19).
3. Type a new password in the **Value** field, if you want.

Figure 2 DMP Administrator Password Random Value



In Release 6.2, we added a new registry key: **defaultDmpAdminPwdBackup**. This is the primary element to make updating the DMP password easier. This registry key will be used as a fallback password when a request to reboot the DMP fails. This fallback password is ignored if not set or is set to the same value as **defaultDmpAdminPwd**.

On full installation of Release 6.2, or when data from Release 6.1 is migrated, **defaultDmpAdminPwdBackup** is set to empty value.

To change the DMP password:

1. Click **More > Management Dashboard > Tools drawer > Advanced tab > Registry**.
2. Copy the registry value in **defaultDmpAdminPwd** to **defaultDmpAdminPwdBackup**.
3. Change the value of **defaultDmpAdminPwd** to the new DMP password you want.
4. Click **Apply**.
5. Reboot the DMPs.

You can choose to keep or clear the value in **defaultDmpAdminPwdBackup** after the DMPs reboot and update their password.

Enable/Disable Browser Inspector

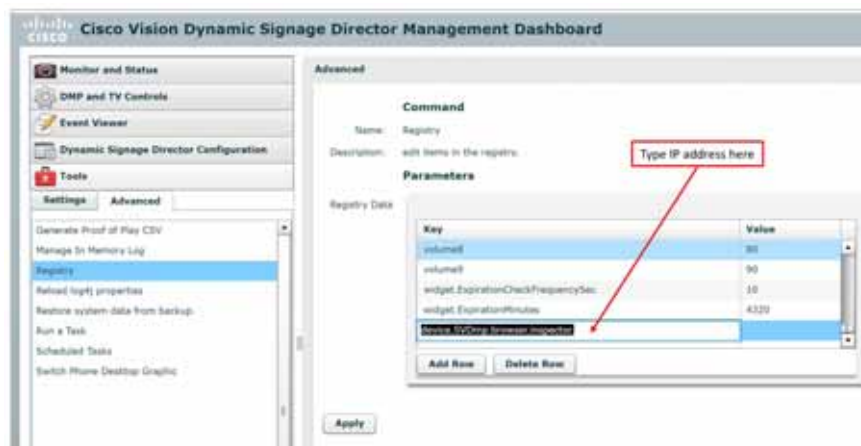
In Release 6.2, we added a number of security enhancements. One of them includes disabling the DMPs browser inspector, by default. This prevents network access to the DMPs. If you choose to add the registry setting to enable the browser inspector, it stays enabled until and unless you remove the registry data completely and reboot the DMPs.

To enable browser inspector:

1. Go to **More > Management Dashboard > Tools** drawer > **Advanced** tab > **Registry**.
2. In **Registry Data**, click **Add Row** (Figure 3 on page 20).
3. To enable, type **device.SvDmp.browser.inspector.addresses**.

For example, the address of 192.168.1.1.10.1.1.1 will enable the browser inspector function on the DMPs with the IP address of 192.168.1.1 and 10.1.1.1.

Figure 3 Adding Browser Inspector Address to Registry Data



4. Reboot the DMP for changes to take effect.

To disable browser inspector capabilities:

1. Remove IP address from list.
2. Empty list or remove key to disable completely.
3. Reboot the DMP for changes to take effect.

Library

When you log into Cisco Vision Director, the **Library** is a web-based portal landing (Figure 4 on page 21). The icons across the top-center are the central point of operation for the following six areas:

- **Library**—Manipulate and upload all assets/content (images, videos, widgets, channels, and external content), create playlists, add tags to content, and organize your content into folders.
- **Device Management**—Control your devices and TVs, set channels, filter/search for channels, Power On and Off devices, Refresh the set criteria for the TVs and Reboot devices.
- **Script Management**—Create, control and stage new event scripts. Centrally control the display of emergency or delay signage for designated areas. Change content “ad hoc” on displays during such things as a touchdown or home run.

Library

- Event Management—Schedule and set the scripts to whichever devices you choose, whenever you choose.
- Designer—Widget and Template designer to help you create snappy content to display to devices.
- Configuration—New to Release 6.2 is the combination of **Control Panel > Setup** and **Control Panel > Control**.

Hover over the icons in the top middle banner. Library displays a list view of the assets (content).

Figure 4 Cisco Vision Director Library Screen

| TITLE | TYPE | SIZE | LAST MODIFIED | DURATION | RESOLUTION |
|--------------------------|-------------|-----------|------------------|----------|------------|
| 1201.jpg | Image(png) | 116.73 KB | 2019-06-20 08:07 | 0 | 400x270 |
| 404027.jpg | Image(png) | 80.64 KB | 2019-01-18 07:57 | 0 | 1112x664 |
| 404027.jpg | Image(png) | 11.18 KB | 2019-06-14 07:34 | 0 | 500x240 |
| Designer-06-06-01 01.mp4 | Video(mpeg) | 220.79 KB | 2019-06-16 06:01 | 24 | 640x210 |
| Designer-06-06-01 01.mp4 | Video(mpeg) | 220.79 KB | 2019-07-02 07:30 | 24 | 640x210 |
| Designer-06-06-01 02.mp4 | Video(mpeg) | 220.79 KB | 2019-06-16 06:02 | 24 | 640x210 |
| Designer-06-06-01 03.mp4 | Video(mpeg) | 220.79 KB | 2019-06-16 06:03 | 24 | 640x210 |
| Designer-06-06-01 04.mp4 | Video(mpeg) | 220.79 KB | 2019-06-16 06:04 | 24 | 640x210 |
| Designer-06-06-01 05.mp4 | Video(mpeg) | 220.79 KB | 2019-06-16 06:05 | 24 | 640x210 |
| Designer-06-06-01 06.mp4 | Video(mpeg) | 220.79 KB | 2019-06-16 06:06 | 24 | 640x210 |
| Designer-06-06-01 07.mp4 | Video(mpeg) | 220.79 KB | 2019-06-16 06:07 | 24 | 640x210 |
| Designer-06-06-01 08.mp4 | Video(mpeg) | 220.79 KB | 2019-06-16 06:08 | 24 | 640x210 |
| Designer-06-06-01 09.mp4 | Video(mpeg) | 220.79 KB | 2019-06-16 06:09 | 24 | 640x210 |
| Designer-06-06-01 10.mp4 | Video(mpeg) | 220.79 KB | 2019-06-16 06:10 | 24 | 640x210 |

The **Library** interface allows you to manage file-based content, external URL content, playlists, and sub-folders. There are separate menus (not part of **Library**) for managing event scripts, scheduled events, and screen templates/widgets.

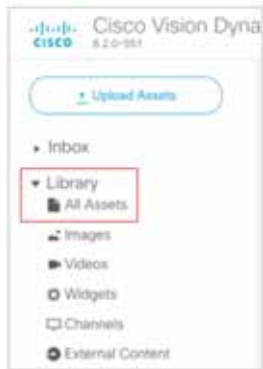
These options are available to the Cisco Vision Dynamic Signage Director Administrator, Content Manager, and Event (and venue) Operator roles.

The enhanced **Library** UI now contains:

- Adjusting bars to size the panels (available in playlist interface)
- Click an asset (content) or playlist to see the detail panel
- Upload, List View and Trash icons in detail panel
- Down-sized thumbnails for better visibility (accessible from Gridview)
- Size, Last Modified, Duration and Resolution columns to give you greater granularity for your assets
- The ability to drag and drop tagged content to a playlist

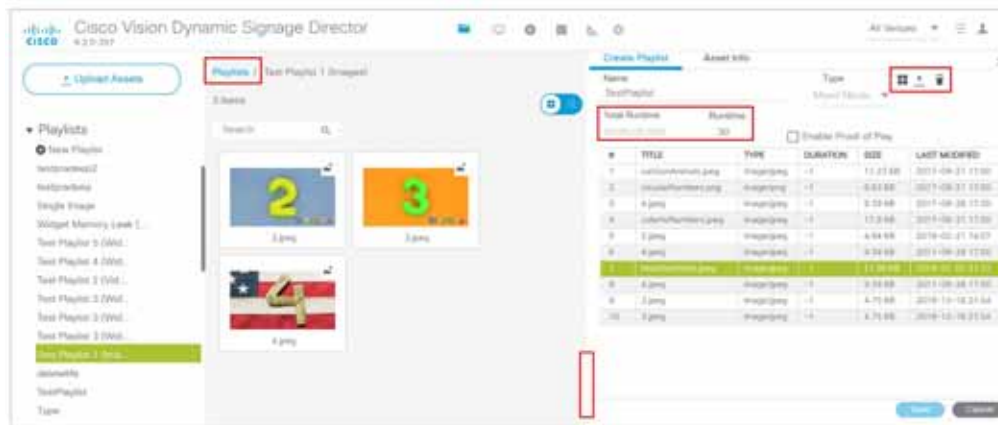
Note: In the left panel of the **Library** interface, the **Library** drop-down menu shows **All Assets** only when the registry setting for **multiVenueDeployment** is set to **false**. If **multiVenueDeployment** is set to **true**, **All Assets** is not visible. See [Asset Items Panel, page 148](#) for detailed information.

Library



For detailed information on the new **Inbox** feature to automate import of content, see [Library Inbox](#), page 145.

Figure 5 Adjusting the Library Screen While in Playlist Detail View



To see more metadata on your content:

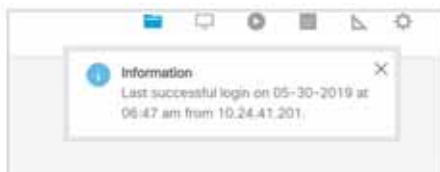
1. Click **Asset Info** at the top of the right panel (Figure 5 on page 22). The metadata appears for the content you chose (Figure 6 on page 23).
2. Preview your content.

Figure 6 Metadata for an Asset (Content)

Login Notification Screens and Lockout

We are making our customer experience more secure by adding lockout protection. Now, if someone attempts to login and fails five times in 1 minute, they are locked out for 30 minutes.

The login information always appears now. Periodically check if the time stamp is accurate for your login information. Here is an example of the information that displays.

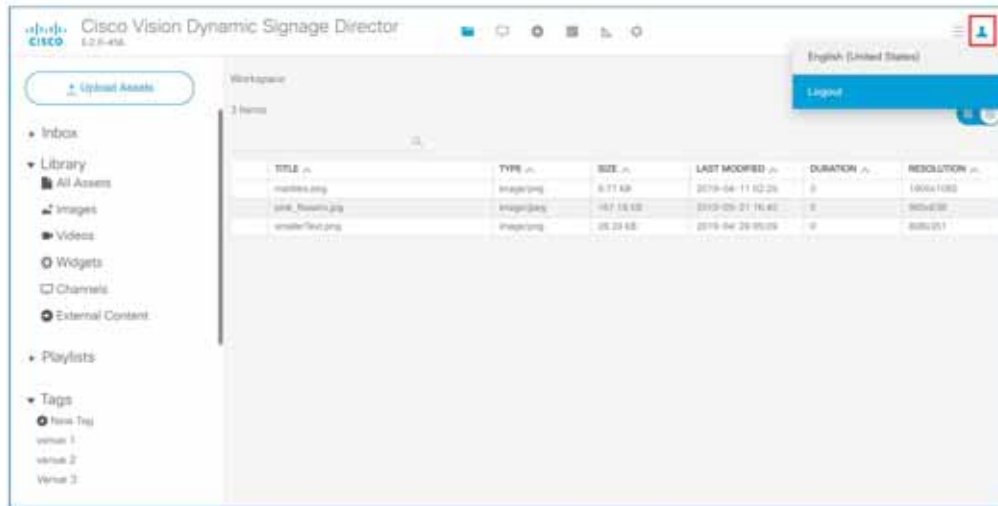


Main Menu Logout Only

For added usability, you logout from the Main Menu only. You cannot logout of Cisco Vision Director from **Management Dashboard** or the **Dynamic Menu Board** interface anymore. The popup that prompts you to logout from **Management Dashboard** is just an information dialog.

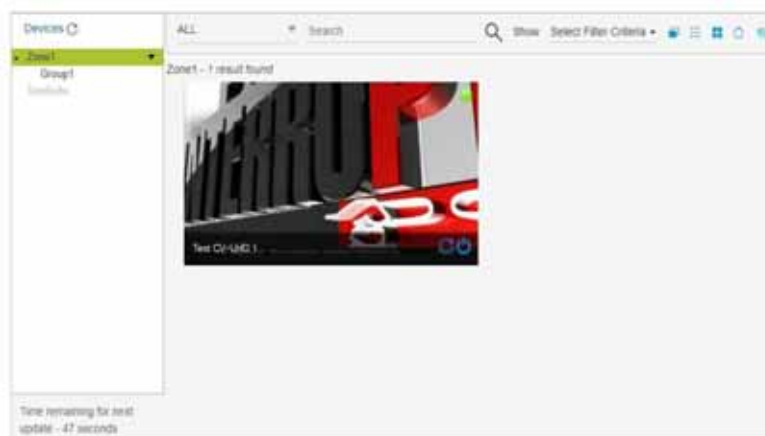
To log out of Cisco Vision Director:

1. Go to the Main Menu in Cisco Vision Director.
2. Click **Account profile > Logout** (Figure 7 on page 24).

Figure 7 Logging Out of Cisco Vision Director

Device Management

Device Management (formerly Command Center Monitoring—CCM) (Figure 8 on page 24) shows at-a-glance device status information for media players and their attached TV displays during an event. Select the TV/monitor icon for access (Figure 9 on page 24).

Figure 8 Device Management**Figure 9 Accessing Device Management**

Device Management (CCM) Application Highlights

- Is accessible from the Main Menu.
- Supports multi-venue site selection.

Script Management

- Polls media players every 120 seconds (default) and auto-refreshes the monitoring display.
- Supports thumbnail view and list view to view device status.
- Allows you to select media players that you want to monitor by group/zone or search by Location Name, Description, IP or MAC Address.
- Allows you to filter the selected device list by several criteria, such as by DMP state or media player model, among others.
- Provides a button for Administrator to reboot a digital media player.

TIP: From Release 6.0, you can use the wildcard “%” to search for partial phrases or names in **Device Management**.

Script Management

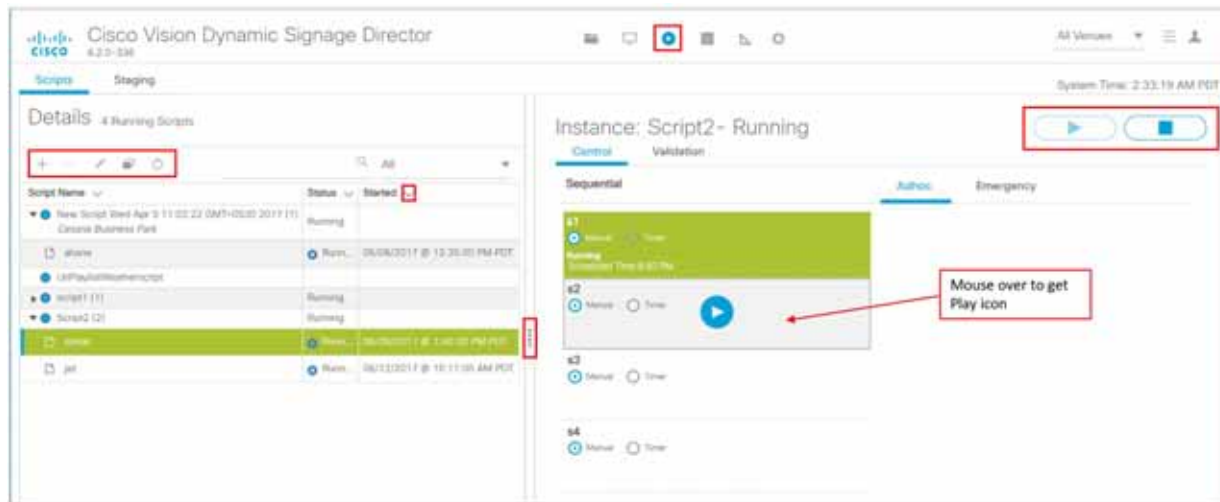


Script Management is a completely HTML-based UI. This is the place to create, control, stage and run fabulous playlists to engage your audiences and make your venues pop. Here are some highlights of the UI updates:

- Global navigation from the Main Menu to **Script Management**.
- Added customizable color schemes for your UI experience.
- Added hover on rows, added **Start** and **Stop** icons for event scripts, and new “State of my Stuff” icons.
- Improved search and filters for your scripts.
- Status “icons” telling you the precise instance of your scripts.
- At a glance, you see: the script name, the status, when it was started, a description, the running state, the venue name, and if you want it in the Proof of Play record. All these rows are editable on hover or right click.
- Added dragging/reordering the columns, resizing everything to maximize real estate on your screen, and columns are even collapsible.

Here’s the new screen for *managing* scripts ([Figure 10 on page 26](#)).

Figure 10 Script Management > Details



Note: We consolidated script control and script editing. We removed the UI option of state details called **Monitor**. More information on scripts is covered later in this document.

Event Management

The Scheduler application provides a calendar-based script scheduling function that you access from the Cisco Vision Dynamic Signage Director **Main Menu > Event Management**.



Note: The Scheduler Application is only available to Administrator and Event Operator roles.

The application opens a calendar (Figure 11 on page 27) that allows you to perform the following tasks:

- Schedule a single occurrence or recurring event series in advance.
- Modify and/or cancel a single occurrence, recurring event series, or an occurrence within a recurring event series.
- Automate the start and stop of an event script.
- Define event script parameters when scheduling an event script.
- View scheduled event scripts by day, week, and month.
- Schedule a state within a script.

Designer

Figure 11 Schedule a Script



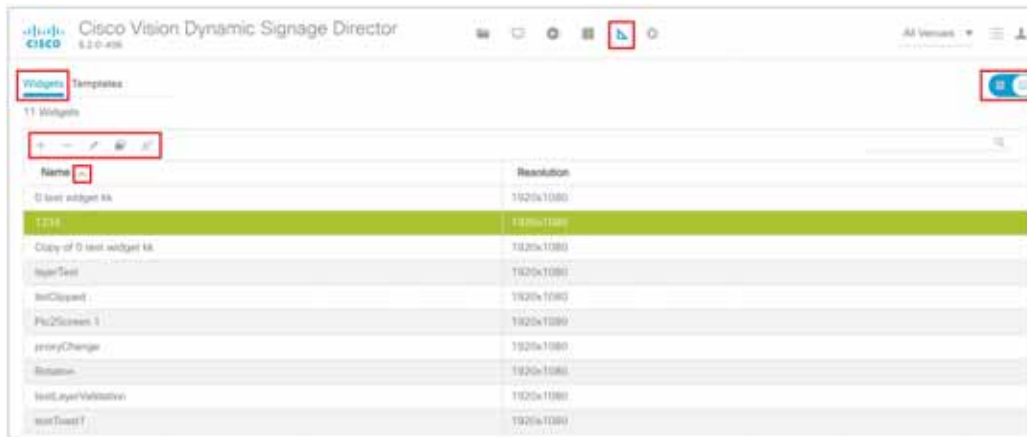
Designer

The updated Designer interface is the gateway for creating your displays in regions with interesting and engaging ads, tickers, menus, videos and graphics. This interface allows you to edit widgets and templates.



This interface is now fully searchable, sortable, and scalable, shows the resolution values of each of your templates, and shows if it is locked with a padlock icon. For more detailed information on using the widgets or templates, see [Working with Screen Templates in Cisco Vision Director, page 95](#).

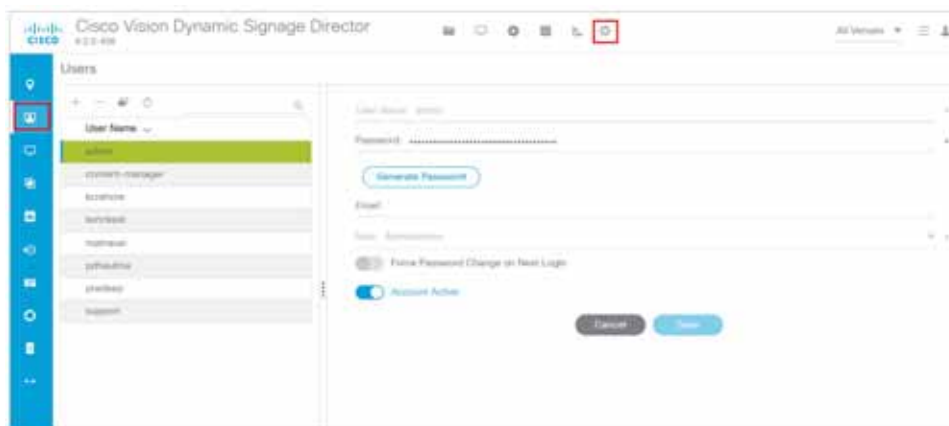
Designer

Figure 12 Designer Interface—Widgets and Templates

Configuration



This new interface is the powerhouse for configuring your venue zone by zone, group by group, and location by location. You can set up channels and create channel guides. You can quickly tabulate your types of devices, create luxury suite groupings and assign types of devices to them. You can work with your input and output triggers and ingest external data. [Figure 13 on page 28](#) shows the Configuration UI options. Hover down the left blue banner for tool tips.

Figure 13 Configuration Interface

The new **Configuration** interface replaces **Control Panel > Setup**. **Configuration** provides a comprehensive interface for setting up device and venue controls for content display in Groups&Zones, Luxury Suites, Channels, Devices, Triggers, Proof of Play and Data Integration. Each of these tabs has a multitude of options to aid in setting up your venue experience.

Here are the icon highlights of the **Configuration** interface:

- Venues—Assign your content by venue location. This interface is visible after it is enabled in **Management Dashboard** and is role specific.

Designer

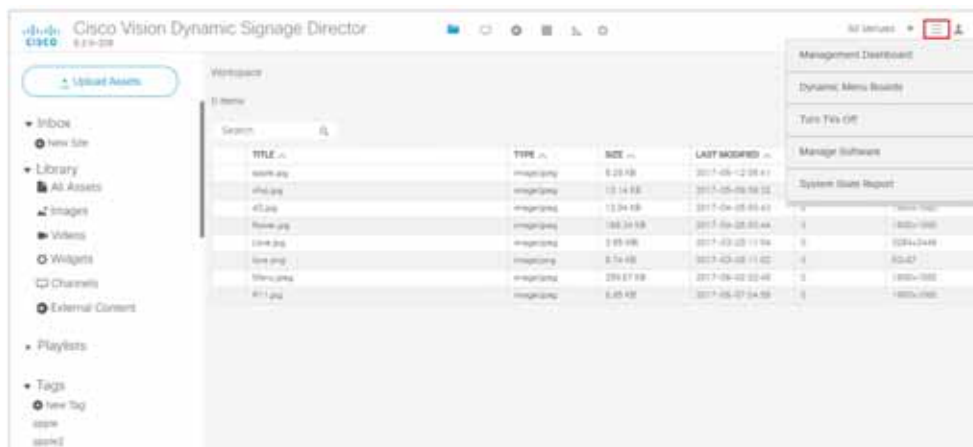
- Users—Create users and manage their roles from the drop-down menu.
- Devices—Add, edit, import and export devices to your venue set up. Devices can be configured by Locations and DMPs, Location-DMP Mapping, IP Phones, Local Control, and Display Specifications.
- Groups & Zones—Sets the Zone and Group names in the venue “areas” so you can track and organize what devices are connected to what TV displays.
- Luxury Suites—Map the suites of your venues to the DMPs to ensure an engaged experience for the guests.
- Channel Definitions—Create channels and video channel profiles. We added a new **DMP Encoding Profiles** tab.
- Channel Guide—Create and assign channel guides to associate to specific devices in the luxury suites.
- Data Integration—Integrating data from external sources to Cisco Vision Director.
- Proof of Play—When selected, compiles a record of the exact content that displayed per DMP.
- Triggers—Configure the input and output triggers here.

More Grid (Hamburger)

Use the **More** drop-down menu to access the following options (Figure 14 on page 29):

- Management Dashboard—Provides a comprehensive interface for managing and monitoring the services and status of the DMPs, TVs, the Cisco Vision Dynamic Signage Director Server, and DMP-to-switch connections for your deployment.
- Dynamic Menu Boards—Provides dynamic control of the content on menu boards in the concession stands during an event.

Figure 14 More on the Main Menu



- Turn TVs Off—Provides for quick control and to power off the TVs.
- Manage Software—Provides interface to upgrade to the latest software or Service Pack, download the latest language packs available, control the fonts you use, manage the DMP, Data Integration, and DSD certificates, and upload a new DSD login background image, a DMP background image, or a channel guide background image.
- System State Report—Provides easy capture and export of system state data for the Cisco Vision Director server. This information can be sent to a remote support engineer to help troubleshoot any issues that occur with the system.

Management Dashboard Application

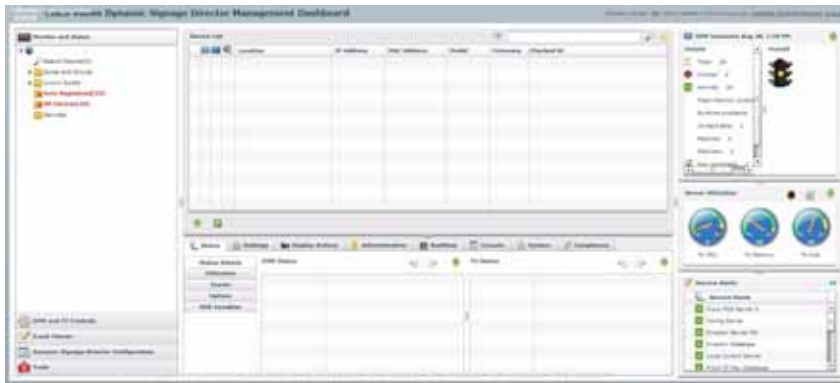
Using the Management Dashboard, you can:

- View status, configure settings, and send commands to devices to keep your network up and properly running
- Upload versions of firmware for automated distribution to DMPs
- Quickly identify issues that need your attention by observing alert icons that provide at-a-glance device status
- Mouse over an alert icon to see a tool tip with suggestions for how to resolve the issue

Additionally, detailed status for devices and monitored services is easily accessible from the **Management Dashboard** interface to help you pinpoint and troubleshoot issues occurring on the network.

Note: Not all commands or display areas apply to all media players; some features are unique to media player type. Some areas might not report the information for a particular device. [Figure 15 on page 30](#) shows the **Management Dashboard**.

Figure 15 Management Dashboard Interface



Layout of the Management Dashboard

[Figure 16 on page 31](#) shows the six primary panels available in the **Management Dashboard**.

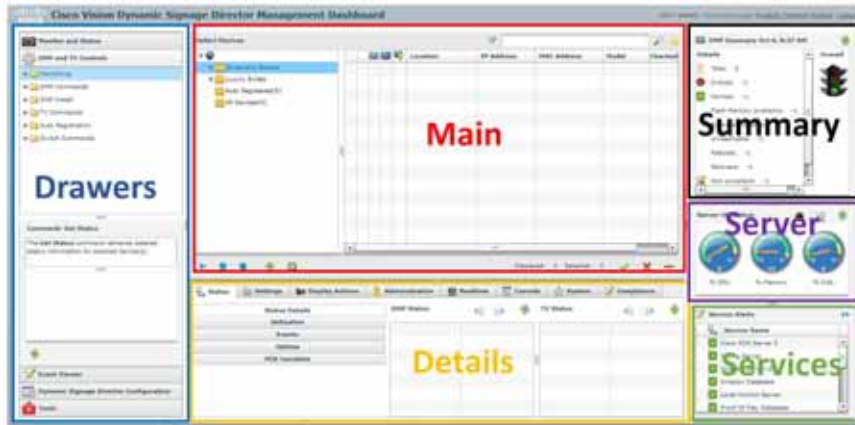
Figure 16 Areas of the Management Dashboard

Table 1 on page 31 provides a breakdown of what each panel displays.

Table 1 Management Dashboard Panel Descriptions

| Panel Area | Description |
|------------|---|
| Drawers | Drawer panel groups operations of the Management Dashboard |
| Main | Shows information for the selected functions or devices and drawer area |
| Details | Shows details for the selected functions or devices in the Main panel |
| Summary | Shows how many media players you have and a summary of their overall condition |
| Server | Shows utilization statistics for the Cisco Vision Director server |
| Services | Displays the status of the services that control the operation of Cisco Vision Director |

Management Dashboard Drawers

Selecting and expanding a **Management Dashboard** *drawer* is generally how you begin working with and navigating the **Management Dashboard** interface. [Figure 17 on page 32](#) shows the set of drawers available in the **Management Dashboard**.

Figure 17 Dashboard Drawers

Each drawer opens a group of related commands and options for monitoring, configuring, and managing the operation of Cisco Vision hardware and software components.

Dynamic Menu Boards Application

The Dynamic Menu Board (DMB) Application is a custom application within Cisco Vision Director that allows you to add your own content for display in a particular menu theme and layout. The default configuration of the DMB application provides sample menu themes. You can copy a sample theme to create menus of your own items that will use the predefined format and layout of that theme. The DMB menu themes support background graphics and both textual and graphical content depending on the predefined format for the selected theme and layout.

You can add content to a menu independently, or you can link to content that are already defined in Cisco or Point of Sale (POS) samples in Cisco Vision Director. The benefit of linking to content in a store is that you can make a change within the store, such as hiding a menu item or changing its price, and populate the change across all menus that are appropriately configured with a link to that item.

For a summary of these menu board creation methods, see [Menu Board Content, page 92](#). [Figure 18 on page 32](#) shows the interface.

Figure 18 Dynamic Menu Boards UI

Turn TVs Off Application

With so many TVs in each Cisco Vision Director deployment, it is important to turn all TVs off after use. The Turn TVs Off application allows an Operator or Administrator to control the power to all TVs within one or more zones, or across the entire venue. Only authorized users can access the Turn TVs Off application ([Figure 19 on page 33](#)). For detailed

information on the roles and their access privileges, see Role-Based Access Control, [RBAC](#), page 39.

Figure 19 TVs Off Interface



The Turn TVs Off application provides the following functionality:

- Administrators can define which TVs (which zones) are to be controlled by the Turn TVs Off custom application.
- Administrators can exclude certain TVs, for example those in the back offices, from being controlled by the Turn TVs Off application.
- A non-IT person, for example the Facility Operator, can access the portal to turn off the TVs (as defined by the Administrator).
- Email notifications can be sent to a configurable list of email addresses whenever the portal is used to turn TVs off.

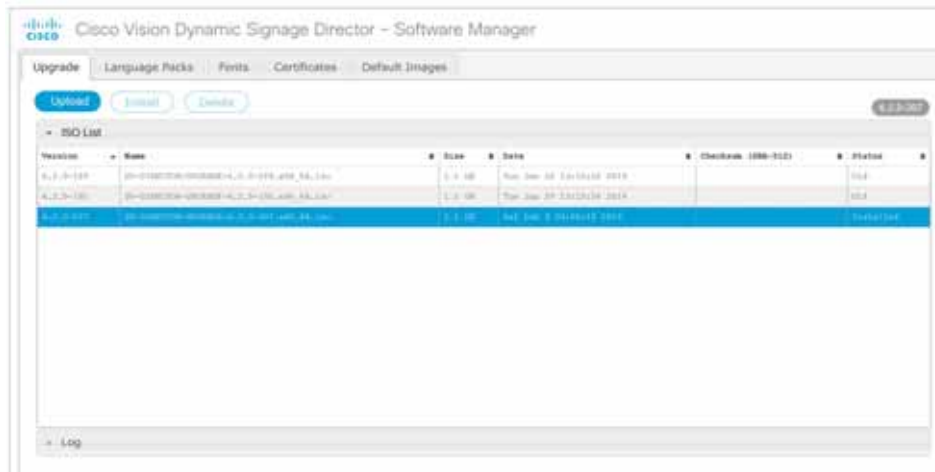
When the Turn TVs Off button is clicked from the Main Menu:

- Commands to turn the TVs off are sent to the DMPs attached to all TVs in the configured zones.
- An email notification is sent to a pre-defined set of users.
- The change in TV status is logged in Cisco Vision Dynamic Signage Director.

Manage Software Application

The Manage Software application ([Figure 20 on page 34](#)) is used only by the Administrator to:

- Upgrade Cisco Vision Director software
- Install language packs for user interface (UI) localization.
- Install custom fonts
- Install DMP, Data Integration, or DSD certificates
- Upload a custom image for the login background screen, DMP background or Channel Guide background

Figure 20 Manage Software Interface

For more information about how to use the Manage Software application, see the [Cisco Vision Software Installation and Upgrade Guide: Dynamic Signage Director, Release 6.2](#). For information on what's new in the Manage Software interface, see the [Release Notes for 6.2](#).

System State Report Application

The System State Report application ([Figure 21 on page 34](#)) enables easy capture and export of system state data for the Cisco Vision Director server. This information can be sent to a remote support engineer to help troubleshoot any issues that occur with the system.

Figure 21 System State Report Interface

For more information, see the [System State Reports](#) module of the [Cisco Vision Administration Guide, Dynamic Signage Director, 6.2](#).

Introduction to Cisco Vision Director APIs

This section summarizes the Application Programming Interfaces (APIs) that are supported in Cisco Vision Director.

- [Event Trigger API, page 35](#)
- [Media Planner Import API, page 35](#)
- [User Control API, page 36](#)

Note: All APIs in the Cisco Vision Dynamic Signage Director are made available by special agreement. Contact your Cisco Systems representative for more information.

Event Trigger API

Cisco Vision Dynamic Signage Director supports an inbound HTTP-based Representational State Transfer (REST) API that a third party can use to trigger one or more actions by the Cisco Vision Dynamic Signage Director software. Cisco Vision Dynamic Signage Director can also send an HTTP-based command to a downstream third-party system.

For more information about support for external input triggers, see the [Configuring Cisco Vision Dynamic Signage Director for External Triggers](#) guide. Event Trigger API is not supported by Cisco Technical Assistance Center personnel.

Note: If you want to control external triggers from a software application, you can contact your Cisco Systems representative to obtain the Event Trigger API that is made available by special agreement. “TriggerSVD” is an example of a third-party demo application for the Event Trigger API on iOS (supporting Apple iTouch, iPhone, and iPad products) and is available as a free download from the iTunes store.

Media Planner Import API

Cisco Vision Director supports the Media Planner Import API that is used to import external, third-party generated playlists. The API can be used to support automatic updates to an already imported playlist that has been placed in a script, or an external playlist can be manually imported.

The Media Planner API supports the following features:

Import Playlist Functionality

- Automatically creates playlist and populates it with existing content.
- Automatically links missing content to playlist after each missing content item is uploaded.
- Updates to playlists tied to a script that have all content items requires no human intervention.

Special User Interface Indications

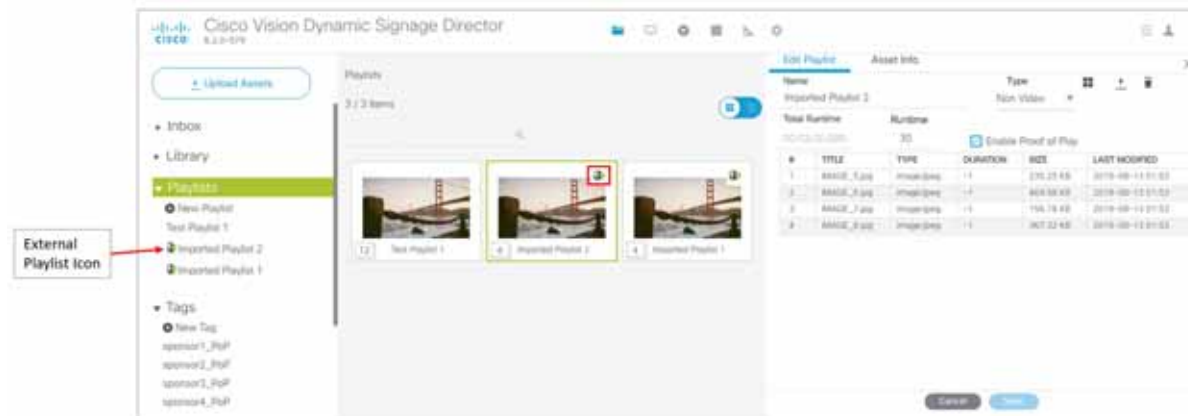
- Imported playlist are easily identifiable as “external playlist.”
- Indicates playlist with missing content.
- Warn user when trying to assign a missing content playlist to template.
- Warn user when starting a script with missing content playlist.

Proof of Play Addition

- Works in the same way as a manually created playlist, but with more granularity.
- Automatic insertion of Proof of Play (POP) tag for each time slot play.

User Interface Example

The API automatically creates the playlist, which you can easily identify by an icon that tags it as an external playlist source ([Figure 22 on page 36](#)).

Figure 22 External Playlists in Content Screen

The playlist is populated with existing content in Cisco Vision Director and you are alerted to any missing content in the playlist. The missing content item is identified with a question mark. Once you import any missing content, it is automatically linked to the external playlist.

Current proof of play reporting is fully supported for external playlist sources and PoP tags are automatically created for specified sponsor IDs. Any missing content is not included in the PoP report.

For more information about how to use the POS integration with Data Integration, see the [Release 6.2: Cisco Vision Director Data Integration Guide](#).

User Control API

Cisco Vision Director supports the in-suite API, which allows querying as well as sending control information to Cisco Vision Director.

The API supports the following areas:

- [HDMI-In Control, page 36](#)
- [Information Retrieval, page 36](#)
- [Security, page 37](#)
- [TV Control, page 37](#)

For more information about Local Control APIs, contact your local or Cisco representative for details.

HDMI-In Control

The following API HDMI-In controls are available on the DMPs:

- Start HDMI-In streaming
- Stop HDMI-In streaming

Information Retrieval

The API information capabilities include:

- Query of which suites that can be controlled.
- Query of all players that can be controlled.

Introduction to Cisco Vision Director APIs

- Query of all players with in a suite that can be controlled.
- Query control features that exist within all suites.
- Query control features that exist within a specific suite.
- Query control features that exist for all players.
- Query control features that exist for a specific player.
- Query A/V inputs that exist for all players.
- Query A/V inputs that exist for a specific player.
- Query of closed captioning capabilities of Vision Director.
- Query the channel guide for a specific suite. If a channel is marked as a favorite, the favorite order is included.
- Query the status of all players that can be controlled.
- Query the status of a specific player.
- Detailed HTTP POST response messages in XML.

Security

The API security capabilities include:

- Unique permanent PIN for each suite in order to access and control the devices within.
- Temporary PIN for each suite that changes per event script run, can be displayed on TV. The temporary PIN is changed every day at 4 a.m. (default) based on the default scheduled task in Cisco Vision Director. It also can be changed on demand using the UI.
- Common master PIN for administrative control.

TV Control

The API TV control capabilities include:

- Power on and off of the TV.
- Channel change to a channel within the guide.
- Channel change up or down from the current channel in the guide.
- Channel favorites and favorite order.
- Volume change to a specific value.
- Volume change up or down from current value.
- Mute the audio with a specific on or off.
- Mute and unmute the audio with a toggle.
- Closed caption on with specific CC setting.
- Closed caption off.
- A/V input change with specific input setting.

Understanding User Roles

- Show and hide of the information banner on the TV.

Video Replay

Beginning in Cisco Vision Dynamic Signage Director Release 5.0, the User Control API is enhanced to support video replay functions on suite TVs using a mobile application.

The API video replay capabilities include:

- Start the replay application.
- Stop the replay application.
- Load the replay application on multiple DMPs or group of DMPs.
- Start playback of the replay video from encoded URL on specified devices.
- Stop playback of the replay video on specified devices.
- Pause playback of currently running replay video.
- Resume playback of currently running replay video.

Understanding User Roles

Before you begin to work with Cisco Vision Director, it is important that you understand Role-Based Access Control (RBAC).

Cisco Vision Director deployments normally have a team of people who are responsible for different aspects of the site setup and event operation. For example, in addition to a System Administrator, there is usually an Event Operator, a Content Manager, and a Technical Support person, among other personnel. Each person has different skills and needs for working with the Cisco Vision Director software.

The Cisco Vision Director software implements RBAC to control permissions and user access to only the portions of the system for which they are trained and authorized to use. More than one user can be assigned to the same role in the software. However, only a single role can be assigned to each user name.

For more details about RBAC in a multi-venue environment, see [Role-Based Access Control for Hierarchical Management of Multiple Venues](#) in the [Cisco Vision Administration Guide: Dynamic Signage Director, 6.2](#).

Administrator Role

Note: This section describes the primary (or central) Administrator role in a Cisco Vision Director system. In Release 5.0, an additional administrative role called the **Venue Administrator** was introduced. A Venue Administrator has a subset of administrative permissions that are authorized on a per-venue basis.

The primary Administrator role has unrestricted access to the Cisco Vision Director software and is the only role that can add users and assign RBAC privileges to them. The Administrator role is pre-configured in Cisco Vision Director and cannot be deleted. However, you can change the password. You also can have more than one user assigned with Administrator privileges.

The Cisco Vision Administrator is the person who is responsible for deploying the Cisco Vision solution throughout the venue.

Note: Administrators have global access to all venues in a multi-venue environment. Venue Administrators only have access to those venues for which they are authorized by a primary Cisco Vision Director Administrator.

The primary administrator has sufficient permissions to do all functions and is the only role able to do the following tasks:

Understanding User Roles

- Use the Software Manager to install language packs, fonts, all certificate types, all default image types or upgrade software on Cisco Vision Director servers
- Configure multiple venue support and Cisco Vision Director Remote servers
- Associate objects to venues
- Create additional users and assign roles
- Add devices to Cisco Vision Director
- Configure local control areas such as luxury suites, back offices, and bars
- Configure Point of Sale (POS)
- Configure the Dynamic Menu Board (DMB) application
- Configure external triggers
- Configure Device Manager and reboot DMPs

RBAC

[Table 2 on page 40](#) provides an overview of the roles that can be assigned by the Administrator in Cisco Vision Dynamic Signage Director.

Table 2 Cisco Vision Dynamic Signage Director Roles

| Role | Description |
|-------------------|---|
| Concessionaire | <p>Concessionaires have access only to the Dynamic Menu Board application backgrounds, which allows modification of certain text-based and graphics items, and the background graphic on menus.</p> <p>All content uploaded by the Concessionaire is available to all users that have sufficient permissions based on the roles assigned to them.</p> <p>The Concessionaire role does not have permissions in the Script Management or the Management Dashboard and they can only see the DMB themes that they create.</p> |
| Content Manager | <p>Content Managers are responsible for uploading content and ads provided by the creative services team. They create event scripts so that the correct content displays in the proper area of the venue and the proper area of the TV screen according to the specified schedule.</p> <p>The Content Manager role has permissions in Cisco Vision Director to configure event states/scripts, zones, groups, screen templates, playlists, and tickers.</p> <p>Content Managers can also assign widgets for custom menus and create playlists for those menus.</p> |
| Event Operator | <p>Event Operators run the Cisco Vision Director event scripts during an event. The event operator role has permissions to schedule scripts using the Scheduler application, start and stop scripts, and modify their states.</p> <p>They can change the transition of an event state from time-based to manual, move an event into one of the three ad hoc states (Inside Emergency, Outside Emergency, or Delay), and approve ticker content (legacy version).</p> <p>Additionally, the Event Operator can execute state changes and is responsible for performing the pre-game walk-through.</p> <p>Event Operators also can use the TV Off application.</p> |
| Facility Operator | <p>Facility Operators have access only to the TV Off application. The facility operator must access this application directly using the <code>http://ipaddress:9090/web/sv/home</code>, where <i>ipaddress</i> is the IP Address of the Cisco Vision Director server.</p> |
| Help Desk | <p>Help Desk users have read-only permissions to view and monitor information on the Management Dashboard and to use Device Management (CCM). This role does not have permissions in the Configuration interface, except to change their own password.</p> <p>For more information on the tasks performed by the help desk role, see the Cisco Vision Director Management Dashboard Guide.</p> |

Table 2 Cisco Vision Dynamic Signage Director Roles

| Role | Description |
|---------------------|---|
| Support | <p>Support users are responsible for first-level technical support. They have limited access to the Management Dashboard to monitor DMP status, troubleshoot, and manage the DMPs on the Cisco Vision network. They also have access to Device Management (CCM). The Support role does not have permissions in the Configuration, except to change their own password.</p> <p>For more information on the tasks performed by the help desk role, see the Cisco Vision Director Management Dashboard Guide.</p> |
| Venue Administrator | <p>(Release 5.0 and later) Venue Administrators have limited permissions at the venues authorized by the central Administrator for that user for the following areas of Cisco Vision Director:</p> <p>Script Management.</p> <p>Management Dashboard—Read-only access with limited command support.</p> <p>Device Management (CCM)—Read-only access.</p> <p>Devices (Display specifications only); Read-only access to Zones Groups, Channels, Luxury Suites.</p> |
| Venue Operator | <p>(Release 3.1 and later). Venue Operators have script control for venues authorized by the Administrator for that user. In the Management Dashboard, Venue Operators can view and monitor information on the Management Dashboard with read-only access to the venues for which permissions are granted. They also have access to Device Management (CCM).</p> |

Note: Venue Administrators and Venue Operators are the only roles that have venue-specific permissions. For more information, see [Configuring Cisco Vision Dynamic Signage Director for Multiple Venue Support](#) in the [Cisco Vision Administration Guide: Dynamic Signage Director, 6.2](#).

Access Summary By Role

[Table 3 on page 42](#) provides a summary of the areas of access in the Cisco Vision Director software by each user role.

Understanding User Roles

Table 3 Role Access Summary by Functional Area of Cisco Vision Dynamic Signage Director

| Functional Area | Admin | Concessionaire | Content Manager | Event Operator | Facility Operator | Help Desk | Support | Venue Admin | Venue Operator |
|--------------------------------|------------|----------------|-----------------|----------------|-------------------|----------------------------|----------------------------|----------------------------|----------------------------|
| Device Management (CCM) | Yes | – | – | – | – | Read only | Read only | Yes | Read only |
| System Configuration | | | | | | | | | |
| Channel Definitions | Yes | – | Yes | – | – | – | – | Read only | – |
| Channel Guide | | | | | | | | | |
| Data Integration | Yes | – | Yes | – | – | – | – | – | – |
| Devices | Yes | – | – | – | – | – | – | Limited¹ | – |
| Menus | Yes | – | Yes | – | – | – | – | – | – |
| My Profile | – | Yes | Yes | Yes | Yes | Yes | Yes | Yes | Yes |
| Proof of Play | Yes | – | – | – | – | – | – | – | – |
| Stores | Yes | – | – | – | – | – | – | – | – |
| Luxury Suites | Yes | – | | | | | Limited² | Read only | – |
| Triggers | Yes | – | – | – | – | – | – | – | – |
| User Admin | Yes | – | – | – | – | – | – | – | – |
| Venues | Yes | – | – | – | – | – | – | – | – |
| Zones Groups | Yes | – | Yes | Yes | – | – | – | Read only | – |
| Script Management | | | | | | | | | |
| Content | Yes | – | Yes | – | – | – | – | Limited³ | – |
| Control | Yes | – | – | Yes | – | – | – | Limited⁴ | Limited⁵ |
| Staging | Yes | – | – | Yes | – | – | – | Yes | – |
| Scheduling | Yes | – | Yes | – | – | – | – | Yes | – |
| Templates | Yes | – | Yes | – | – | – | – | – | – |
| Widgets | Yes | – | Yes | – | – | – | – | – | – |
| Dynamic Menu Boards | Yes | Yes | Yes | – | – | – | – | – | – |
| Management Dashboard | Yes | – | – | – | – | Limited⁵ | Yes⁶ | Limited⁷ | Limited⁸ |
| Scheduler Application | Yes | – | – | Yes | – | – | – | – | – |
| Software Manager | Yes | – | – | – | – | – | – | – | – |
| System State Reports | Yes | – | – | – | – | – | – | – | – |
| TV Off Application | Yes | – | – | Yes | Yes | – | – | – | – |

Understanding User Roles

1. Venue Administrators can only edit the Display Specifications panel.
2. Support users can set up TV control PINs and channel guides for suites.
3. Venue Administrators can delete content associated (tagged) to the venues for which that venue admin is authorized. External content, channels, and Dynamic Menu Board (DMB) content items are global to all venues. Therefore, these global content items also can be deleted by the venue admin.
4. Venue Administrators and Venue Operators have script control only, and only for venues authorized by the Administrator for that user.
5. Help Desk users can view and monitor information on the Management Dashboard with read-only access. They also can run Get Status, Ping, Display IP, and Ping Test commands for DMPs in the Management Dashboard.
6. Support users can run Get Status, Ping, Display IP, Ping Test, TV On/Off, Set Display Input, Set Display Banner, Set Closed Captions, Set Video Channel, Cabling Test using TDR, and Show TDR Test Results commands.
7. Venue Administrators can view and monitor information on the Management Dashboard with read-only access to the venues for which permissions are granted. They also can run Get Status, Ping, Display IP, and Ping Test commands in the Management Dashboard for the DMPs in the venues at which that Venue Administrator is authorized.
8. Venue Operators can view and monitor information on the Management Dashboard with read-only access to the venues for which permissions are granted. They also can run Get Status, Ping, Display IP, and Query Syslog commands in the Management Dashboard for the DMPs in the venues at which that Venue Operator is authorized.

