



Cisco Vision Dynamic Signage Director Server Text-Based User Interface

The text-based user interface (TUI) provides a console-based interface for use by system installers, administrators, and troubleshooting personnel. The TUI replaces the requirement for any low-level system command line (shell) access and performs routine system tasks such as modifying system configurations, changing passwords, and checking system logs. Remote TAC access and troubleshooting can both be done from the TUI in the event of an outage or failure.

Contents

- [Information About the TUI, page 109](#)
- [How to Use the TUI, page 113](#)
- [Related Documentation, page 114](#)

Information About the TUI

This section includes the following topics:

- [Overview of the TUI Menus, page 109](#)
- [Working with the TUI Interface, page 112](#)

Overview of the TUI Menus

The TUI is a nested structure of menus with options that allow you to drill down to specific system tasks to perform on the server. The primary menus are:

- Main Menu
- System Settings
- System Accounts
- Services Control
- Cisco Vision Server Administration
- Troubleshooting

Information About the TUI

[Table 1 on page 110](#) provides a description of the primary menus included in the Cisco Vision Dynamic Signage Director TUI.

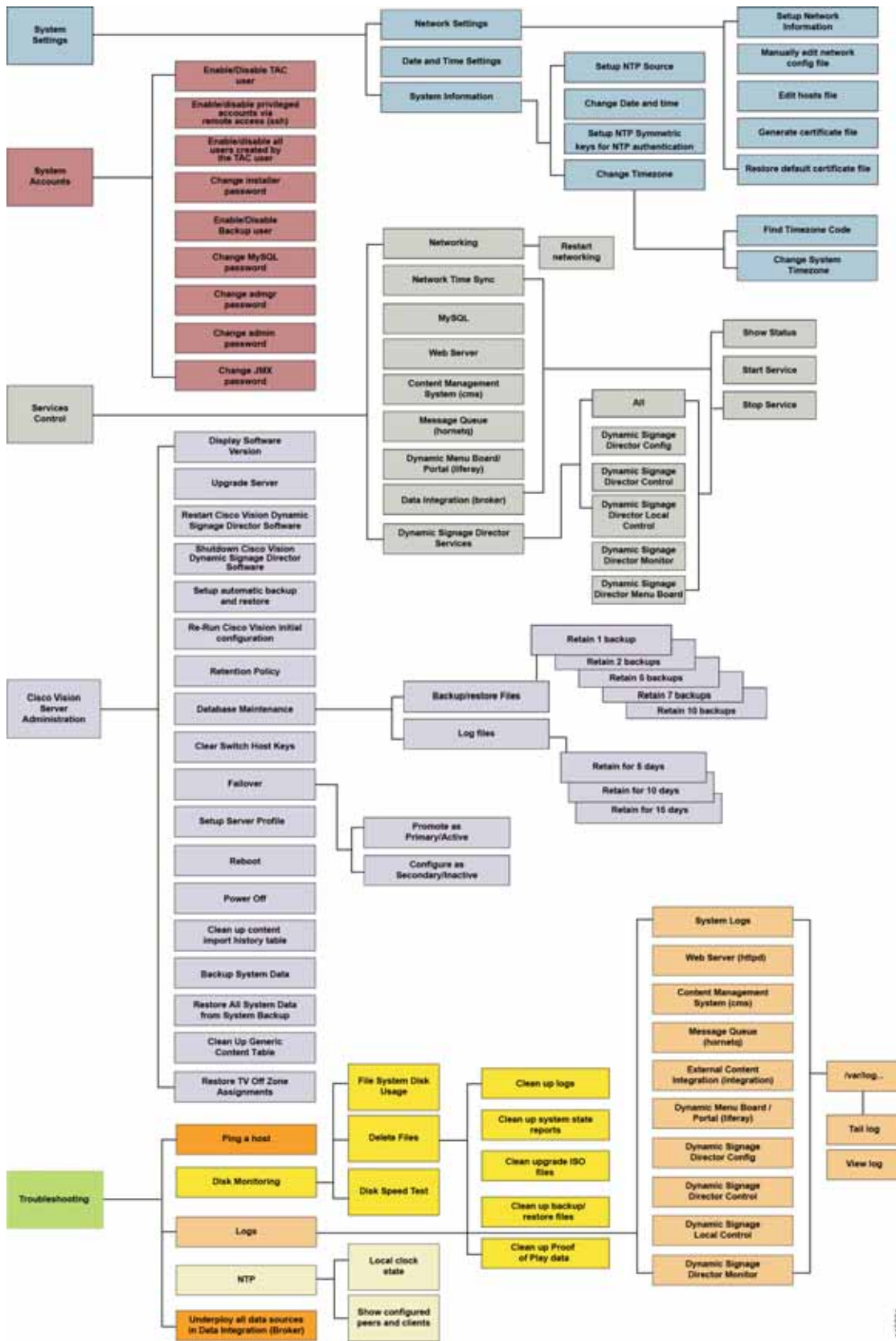
Table 1 Description of the Primary TUI Menus

Menu Name	Use this menu to . . .
Main Menu	Access all other menus or exit the TUI.
System Settings	Change server network configuration, system date/time, or display system information.
System Accounts	Manage default system passwords. For more information about system accounts and modifying them, see System Accounts on the Cisco Vision Dynamic Signage Director Servers, page 71 .
Services Control	Access services running on the server to start, stop, or show status.
Cisco Vision Server Administration	Manage the operation and software configuration of the server.
Troubleshooting	Run a ping command, monitor disk space usage, clean up files to free up disk space, test disk speed, display system logging information, or get NTP information.

[Figure 1 on page 110](#) shows a map of the new Cisco Vision Dynamic Signage Director TUI menu system and options.

Figure 1 TUI Map for Cisco Vision Dynamic Signage Director Servers

Information About the TUI



44833T

Working with the TUI Interface

This section includes the following topics:

- [Menu Navigation, page 112](#)
- [File Editor, page 112](#)

Menu Navigation

The Main Menu displays when you log in. To navigate through the menus, type the character that corresponds to the menu area item (**a**, **b**, **c**, and so on) and press **Enter**.

To return to other menus, use one of the indicated keys to return you to prior menus.

Caution: Avoid pressing Ctrl-c from the TUI. If services were started during the session they might stop running. Use the TUI menu system to exit the interface.

File Editor

Several of the TUI options open server system files for you to modify using the Unix system vi editor. The following configuration files are editable from the TUI:

- DNS information—/etc/resolv.conf
- NTP server information—/etc/ntp.conf
- Server host information—/etc/hosts

Before modifying configuration files, you should be familiar with the simple editing techniques used within the vi editor. [Table 2 on page 112](#) describes some of the more common vi editor commands.

Table 2 Common vi Editor Commands

Command	Description
ZZ or :wq	Exit vi and save changes.
:q!	Exit vi without saving changes.
Esc key	Exit current mode and enter vi command mode.
Cursor Movement	
h	Move left (backspace).
j	Move down.
k	Move up.
l	Move right.
Enter key	Move to the beginning of the next line.
Inserting	
a	Append character after cursor.
i	Insert character before cursor. Enters INSERT mode.
r	Replace character under cursor with next character typed.
R	Keep replacing character until [Esc] is pressed.
Deleting	
db	Delete word before cursor.

Table 2 Common vi Editor Commands (continued)

Command	Description
dd	Delete line under cursor.
dw	Delete word under cursor.
x	Delete character under cursor.
Put	
P	Undo deletion of characters, words, or lines before cursor.
p	Undo deletion of characters, words, or lines after cursor.

How to Use the TUI

This section provides information about how to use some of the areas of the TUI interface. It includes the following topics:

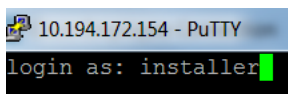
- [Logging Into the TUI, page 113](#)
- [Displaying System Information, page 114](#)
- [Exiting the TUI, page 114](#)

Logging Into the TUI

To access the TUI, use either physical console access or an SSH client such as PuTTY.

To log into the TUI:

1. Do one of the following:
 - Access the server using a directly-attached console.
 - In the SSH client software, specify the IP address of the server that you want to access.
2. When the “login as:” prompt appears, type **installer** and press **Enter** ([Figure 2 on page 113](#)):

Figure 2 TUI Login Prompt

3. At the password prompt, type the installer password and press **Enter**.

Note: In a PuTTY terminal, the keystrokes for your password entry are not shown.

When the login is successful, the Main Menu displays along with some basic system information at the top of the screen ([Figure 3 on page 114](#)).

Figure 3 Cisco Vision Dynamic Signage Director TUI Main Menu

```

Cisco Vision Dynamic Signage Director Configuration Menu
)
Hostname:          ES-director
IP address:        10.104.170.188
Software version:  6.2.0 build 332

-----
Main Menu

Please choose one of the following menu options:

a) System Settings
b) System Accounts
c) Services Control
d) Cisco Vision Server Administration
e) Troubleshooting
X) Exit

```

Note: Once logged in, you can change the installer password from the **System Accounts > Change installer password** menu option.

Note: Keep a good record of the changed installer password. Cisco cannot recover the password, If you lose the password, a re-install could be required.

Displaying System Information

The **System Settings > System Information** option allows you to obtain information about the current network configuration, hosts file, DNS configuration, NTP server, system date and time, and UUID for the server.

To display system information:

1. Go to the TUI Main Menu.
2. Choose **System Settings** and press **Enter** (Figure 3 on page 114).
3. From the **System Settings** menu, type the letter corresponding to the **System Information** option and press **Enter**.

The system information is displayed on your screen.

4. To return to the **System Settings** menu, press any key.

Exiting the TUI

Caution: Avoid pressing **Ctrl-c** from the TUI. If services were started during the session they might stop running. Use the TUI menu system to exit the interface.

To exit the TUI:

1. Go to the TUI Main Menu.
Note: If you are in a TUI submenu, type **R** or **<** or **,** and press **Enter** to go back to the Main Menu.
2. Type **X** and press **Enter**.

Related Documentation

The following documents provide details about using some of the specific areas of the TUI:

- Other modules in this Cisco Vision Dynamic Signage Director Server Administration Guide
- [Cisco Vision Software Installation and Upgrade Guide: Dynamic Signage Director Release 6.4](#)