



# Appendix A: CIMC Configuration and Firmware Upgrade Guidelines on the Cisco UCS C220 Server

---

**First Published: June 18, 2014**

This document provides guidelines for configuring the Cisco Integrated Management Controller (CIMC) interface and performing the initial configuration, and upgrading the CIMC/BIOS firmware on the Cisco UCS C220 servers for Cisco StadiumVision Mobile.



**Note**

---

Use the information in this appendix only as a guide to the tasks that you need to perform for CIMC configuration or upgrade, but follow the procedures in the referenced Cisco UCS documents.

---

This section includes the following topics:

- [CIMC Initial Configuration, page 17](#) (required)
- [CIMC Firmware Upgrade Guidelines, page 19](#) (as required)

## CIMC Initial Configuration

This section includes the following topics:

- [Prerequisites, page 17](#)
- [CIMC Initial Configuration Summary, page 18](#)

## Prerequisites

Be sure that the following requirements are met before you do the CIMC initial configuration:

- You have a monitor, keyboard, and mouse that you can connect to the server.
- You have the following information for configuring the internal Cisco Integrated Management Controller (CIMC) interface:
  - You have an additional IP address for static configuration.

**Tip**

This is a different IP address than the IP address that you configure for the eth0 network interface on the Cisco StadiumVision server.

- You have the VLAN ID if the server will be installed on a network VLAN.
- You are prepared to change the default CIMC login password.
- You have a laptop with access to the Cisco StadiumVision network.
- Your computer meets the minimum browser and Flash player requirements for the Cisco StadiumVision server, and also has Java 1.6 or later installed.

See the release notes for your Cisco StadiumVision product and release at:

[http://www.cisco.com/en/US/products/ps11274/prod\\_release\\_notes\\_list.html](http://www.cisco.com/en/US/products/ps11274/prod_release_notes_list.html)

- You have a copy of or access to the following documents on Cisco.com:
  - *Cisco UCS C220 Server Installation and Service Guide*  
Familiarize yourself with the “Initial Server Setup” topic of the “Installing the Server” chapter.
  - *Cisco UCS C-Series Servers Integrated Management Controller GUI Configuration Guide, Release 1.4*

(or the version that corresponds to your firmware release found at:

[http://www.cisco.com/en/US/products/ps10739/products\\_installation\\_and\\_configuration\\_guides\\_list.html](http://www.cisco.com/en/US/products/ps10739/products_installation_and_configuration_guides_list.html).)

## CIMC Initial Configuration Summary

This section provides an overview of the basic tasks to be completed when performing the initial CIMC configuration in standalone mode for a Cisco StadiumVision server after you have unpacked and inspected it and prepared it for installation.

**To perform the CIMC initial configuration, complete the following tasks:**

	Description
	<p><b>Configuring the CIMC Interface</b></p> <p><b>Note</b> The instructions for configuring the CIMC interface are found in the “Initial Server Setup” topic of the “Installing the Server” chapter in the <i>Cisco UCS C220 Server Installation and Service Guide</i>.</p>
<b>Step 1</b>	During bootup, press <b>F8</b> when prompted to open the BIOS CIMC Configuration Utility.
<b>Step 2</b>	Configure the CIMC interface with the following settings: <ul style="list-style-type: none"> <li>• DHCP—Disabled. You must change this option to enter a static IP address.</li> <li>• CIMC IP—IPv4 address for your CIMC interface, with corresponding subnet mask.</li> <li>• VLAN—Dependent on client network.</li> <li>• Change the CIMC password. The default credential is <b>admin</b> and <b>password</b>.</li> </ul>
<b>Step 3</b>	Press <b>F10</b> to save your configuration and reboot the server.

	Description
	<p><b>Configuring the NIC Properties</b></p> <p><b>Note</b> Information about configuring the NIC properties are found in the “Initial Server Setup” topic of the “Installing the Server” chapter in the <i>Cisco UCS C220 Server Installation and Service Guide</i>.</p>
<b>Step 4</b>	From a laptop with access to the Cisco StadiumVision network, use a browser and type the IP address that you configured for the CIMC interface to connect to the CIMC console.
<b>Step 5</b>	Log into the CIMC console with username <b>admin</b> and the password that you configured in <a href="#">Step 2</a> .
<b>Step 6</b>	<p>From the <b>Admin</b> tab, click <b>Network</b>, and go to the <b>Network Settings</b> page.</p> <p>In the NIC Properties box configure the following settings and save your changes:</p> <ul style="list-style-type: none"> <li>• NIC mode—Dedicated</li> <li>• NIC Redundancy—None</li> </ul>
	<p><b>Configuring the Server Boot Order</b></p> <p><b>Note</b> The instructions for configuring the server boot order are found in the “Managing the Server Boot Order” section of the “Managing the Server” chapter of the <i>Cisco UCS C-Series Servers Integrated Management Controller GUI Configuration Guide, Release 1.4</i></p>
<b>Step 7</b>	From the <b>Server</b> tab, click <b>BIOS</b> .
<b>Step 8</b>	<p>Configure the following boot order and save your changes:</p> <ul style="list-style-type: none"> <li>• Virtual CD/DVD</li> <li>• HDD</li> </ul>

## CIMC Firmware Upgrade Guidelines

This section includes the following topics:

- [Before You Begin](#), page 19
- [Prerequisites](#), page 20
- [CIMC/BIOS Firmware Upgrade Summary](#), page 20

### Before You Begin

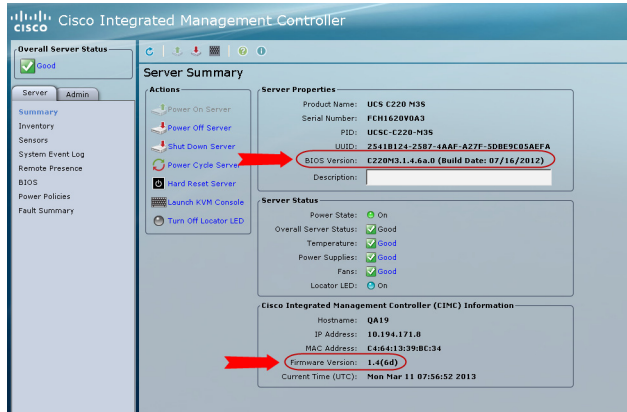
See the release notes for your Cisco StadiumVision product and release at:

[http://www.cisco.com/en/US/products/ps11274/prod\\_release\\_notes\\_list.html](http://www.cisco.com/en/US/products/ps11274/prod_release_notes_list.html)

- Find the minimum CIMC/BIOS versions tested for your Cisco StadiumVision Mobile platform.

- From your Cisco StadiumVision platform, verify the CIMC and BIOS firmware versions in the CIMC console (Figure 1).

**Figure 1** Firmware Verification From the CIMC Console



**Note**

Unless there is another reason why an upgrade has been found to be needed, no upgrade should be needed if your server firmware is at the minimum tested version (or later) for the Cisco StadiumVision release that you are running.

## Prerequisites

Be sure that the following requirements are met before you perform a CIMC/BIOS firmware upgrade:

- You have a copy of or access to the following documents on Cisco.com:
  - Release Notes for Cisco UCS C-Series Software, Release 1.4(6)*  
(or the version that corresponds to your firmware release found at: [http://www.cisco.com/en/US/products/ps10739/prod\\_release\\_notes\\_list.html](http://www.cisco.com/en/US/products/ps10739/prod_release_notes_list.html))
  - Cisco Host Upgrade Utility Release 1.4(6) Quick Start Guide*  
(or the version that corresponds to your firmware release found at: [http://www.cisco.com/en/US/products/ps10493/products\\_user\\_guide\\_list.html](http://www.cisco.com/en/US/products/ps10493/products_user_guide_list.html))
 Familiarize yourself with all of the requirements in these documents to perform your CIMC/BIOS firmware upgrade.
- You have access to Cisco.com to download the firmware ISO file.

## CIMC/BIOS Firmware Upgrade Summary



**Caution**

Be sure to follow the requirements in the release notes and the Host Upgrade Utility (HUU) guide for your firmware, including making sure that you upgrade both the CIMC and BIOS at the same time and from the HUU ISO file.

To perform the CIMC/BIOS firmware upgrade, complete the following tasks:

	Description
<b>Step 1</b>	<p>Using the release notes for the firmware version that you need to install, find the name of the ISO file that applies to the Cisco UCS C220 server for that firmware.</p> <p><b>Note</b> The release 1.4(x) firmware HUU ISO files are platform-specific.</p>
<b>Step 2</b>	<p>Follow the instructions in the Host Upgrade Utility guide:</p> <p><b>Note</b> The Cisco UCS C220 server does not have a CD/DVD drive.</p> <ul style="list-style-type: none"><li>• Go to Cisco.com and download the HUU ISO file.</li><li>• Follow the instructions to load the ISO that you downloaded and be sure that both the CIMC and BIOS firmware are upgraded together.</li></ul>

