



Installing Cisco StadiumVision Mobile Software for the First Time

First Published: June 18, 2014

This module provides instructions for installing Cisco StadiumVision Mobile Reporter or Cisco StadiumVision Mobile Streamer software on the Cisco UCS C220, as well as the requirements for installing Cisco StadiumVision Mobile software on a VM (virtual machine), and contains the following sections:

- [Installation Tasks, page 10](#)
- [Configuring the Network Setup, page 15](#)
- [What To Do Next, page 18](#)

Prerequisites

Refer to the Release Notes for Cisco StadiumVision Mobile Release 2.0 for the latest information about hardware and software requirements, changes, important notes, and caveats for your software release.

Cisco UCS C220 Servers

Be sure that the following requirements are met before you upgrade your server:

- Your new server is installed in its production location. For more information, see the [Cisco UCS C220 Server Installation and Service Guide](#).
- You have completed the initial server setup and configured the Cisco UCS C-Series Integrated Management Controller (CIMC) interface.
- To configure the CIMC, you will need an additional IP address for the server and should be prepared to change the default login and password. Be sure that the server is configured for standalone mode with the following settings:
 - DHCP—Disabled
 - NIC redundancy—None
 - Boot order—Virtual CD/DVD, HDD

For more information, see the [Appendix A: CIMC Configuration and Firmware Upgrade Guidelines on the Cisco UCS C220 Server](#) module.

- You have the network information required to configure the Ethernet connection on the Cisco StadiumVision Mobile server, such as:

- IP address (IPv4 only) and network mask

**Note**

The Cisco StadiumVision Mobile server should be configured with a static IP address or a non-expiring DHCP lease.

- Default gateway address
- DNS server address
- Hostname
- The Cisco StadiumVision Mobile server is connected to the network and has power.
- Power on the server and verify the boot order in the BIOS (by pressing F2 while booting) prior to installation.
- To access the Cisco Integrated Management Controller (CIMC) for the software installation, the following requirements are met:
 - Your computer meets the minimum browser requirements for Cisco StadiumVision Mobile, and also has Java 1.6 or later installed.
 - You have a laptop connection with access to the Cisco StadiumVision Mobile server network.
 - You have the IP address of the CIMC interface on the Cisco StadiumVision Mobile server.
 - You have the CIMC interface login credential. The default credential is admin and password.

When using a Cisco UCS C220 server, observe the following guidelines before starting the installation:

**Caution**

Do *not* alter the RAID configuration prior to installation

- Verify the boot order in the BIOS (by pressing **F2** while booting) prior to installation

**Caution**

If you are doing a fresh installation on a previously configured system, a full install will erase the Cisco StadiumVision Mobile Streamer or Cisco StadiumVision Mobile Reporter configuration. Perform a backup prior to installing to preserve configuration data. See the *Cisco StadiumVision Mobile Streamer Administration Guide* or *Cisco StadiumVision Mobile Reporter Administration Guide* for instructions on performing a backup.

Virtualized Server Environment

Installing Cisco StadiumVision Mobile in a virtualized server environment includes setting up your server environment, running the full ISO for Cisco StadiumVision Mobile, and configuring the network. For more information see the [“Hardware Prerequisites” section on page 6](#), the [“Installing on a Virtual Server for the First Time” section on page 8](#), in the [“Getting Started Installing or Upgrading Cisco StadiumVision Mobile Software” module](#).

Installation Tasks

This section provides a high-level overview of the installation process, and contains the following sections.

- [Obtaining the ISO File, page 11](#)
- [Installing from the hard drive, page 11](#)

- [Installing using CIMC, page 12](#)
- [Installing on a Virtual Server with Release 2.0 for the First Time, page 15](#)
- [Configuring the Network Setup, page 15](#)
- [Logging into the TUI, page 18](#)
- [Setting the server time zone, page 19](#)
- [Setting the server date and time, page 19](#)
- [Configuring NTP, page 19](#)

Table 1 lists the platform, type of media, and file to use to perform a fresh installation.

Table 1 *Cisco StadiumVision Mobile Fresh Installation Media and ISO File Type*

Product	Platform	Media	File to Use
Cisco StadiumVision Mobile Streamer or Cisco StadiumVision Mobile Reporter	Cisco UCS C220	Hard drive	Full ISO
	Cisco UCS C220	CIMC remote mount	

Obtaining the ISO File

Obtaining the Full ISO from stadiumvision-pm@cisco.com if you need the full install ISO file.

Installing from the hard drive

To install from the hard drive, complete the following steps:

-
- Step 1** Be sure the CIMC firmware is up to date; configure CIMC (see [“Appendix A: CIMC Configuration and Firmware Upgrade Guidelines on the Cisco UCS C220 Server”](#)).
- Step 2** Power on the server.
- Step 3** When the server console shows a login prompt proceed to the [“Configuring the Network Setup”](#) section on [page 15](#).
-



Note

Cisco StadiumVision Mobile Reporter and Cisco StadiumVision Mobile Streamer come preinstalled with a released image of Cisco StadiumVision Mobile software. Depending on the timing of your hardware shipment with available software releases, this image might not be the latest released version. Therefore, after you install your hardware, it is important that you power on and access the Cisco StadiumVision Mobile software to verify the software version. As necessary, you can upgrade the software following the guidelines in this guide and in the Cisco StadiumVision Mobile Release Notes.

Installing using CIMC

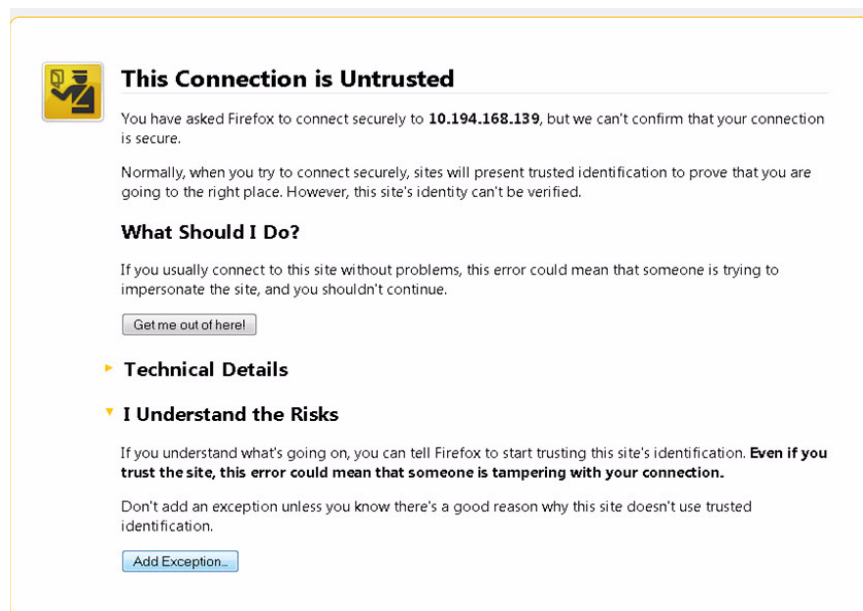
To install using CIMC, complete the following steps:

- Step 1** Verify that CIMC firmware and BIOS are up to date.
- Step 2** Configure CIMC (see “[Appendix A: CIMC Configuration and Firmware Upgrade Guidelines on the Cisco UCS C220 Server](#)”).

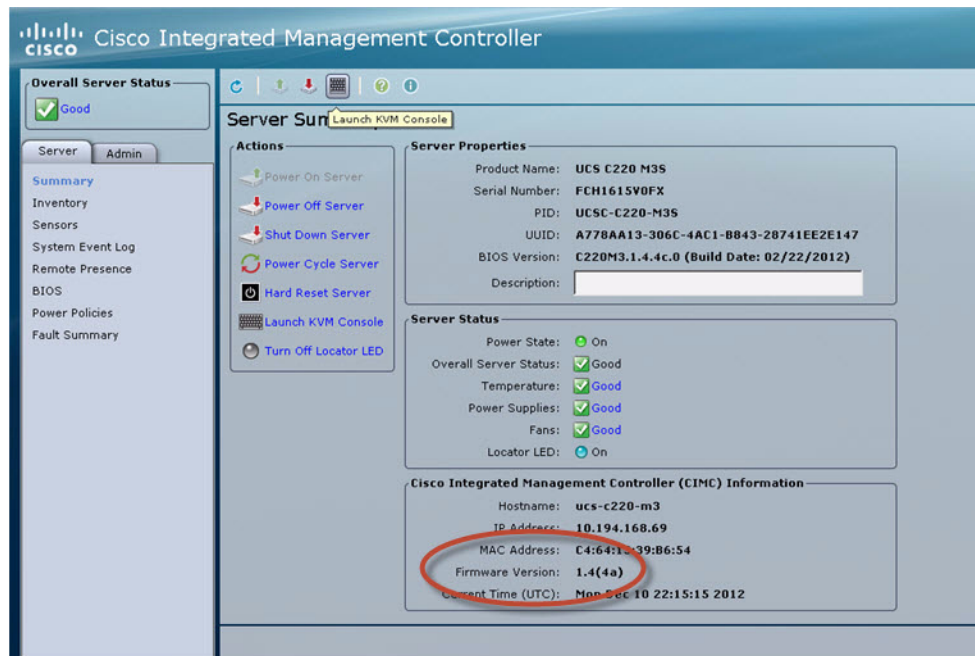


Note At this release, the CIMC 1.5.1 firmware version is the minimum tested version.

- Step 3** Connect a second Ethernet cable to the CIMC Ethernet port marked **M**.
- Step 4** Power on the server.
- Step 5** Start CIMC and perform a virtual DVD mount:
- Access CIMC from a web browser:
https://ip_address/login.html
 - Click the **Add Exception** button.



- Click **Confirm Security Exception** to get to the CIMC login page. The default login credentials are:
user: admin
password: password
- Click on the **Launch KVM Console** at the top of the CIMC interface to launch the KVM console.



The KVM tab provides a view of the system diagnostics or command prompt execution. The Virtual Media tab provides the virtual CD/DVD setup for ISO installation.

- e. Click on Add Image tab under the KVM Console Virtual Media tab.
- f. Navigate to the ISO file.

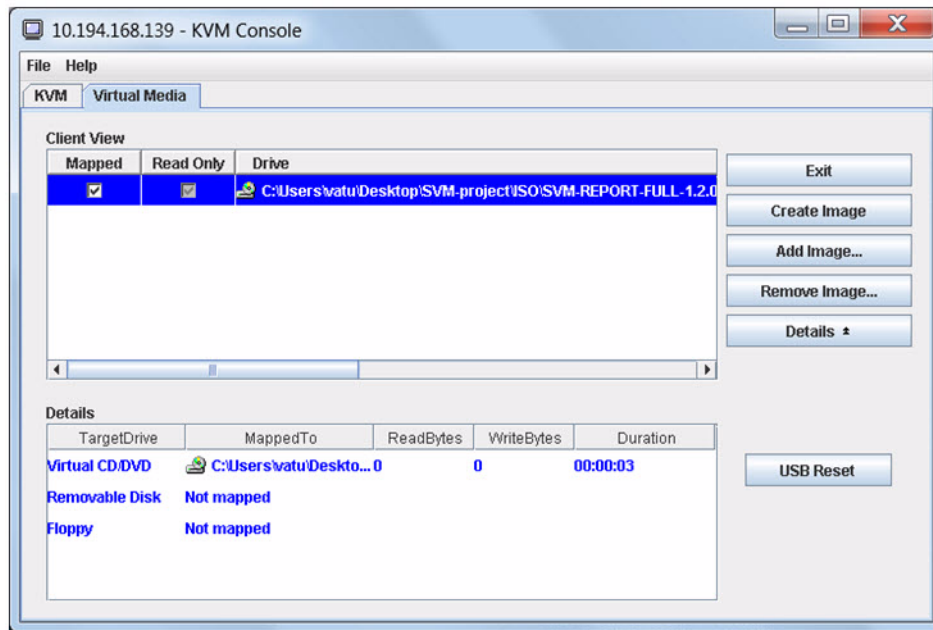
**Note**

CIMC can experience slow performance. If slow performance occurs, clear the browser cache.

**Note**

If the installation seems to suspend operation on a Cisco UCS C220, you might need to restart the installation by remapping the ISO image, and power cycling the Cisco UCS C220 server.

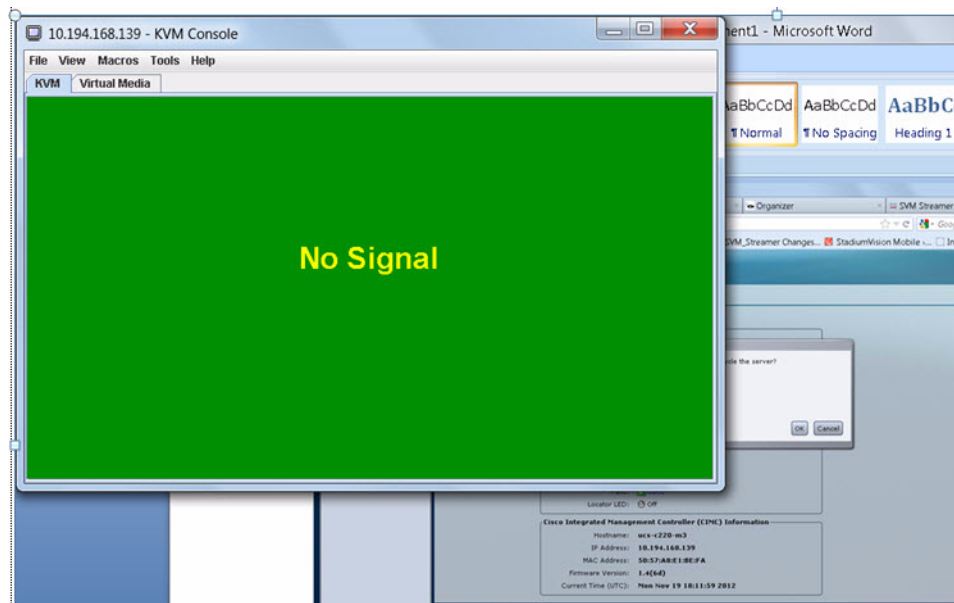
- g. Click the check box for the Mapped option under Client View to select the ISO source.
- h. Confirm that the Virtual CD/DVD has been added under the Virtual Media tab, Virtual CD/DVD.



- i. Double click on **Virtual CD/DVD** and observe the read bytes counter increasing (this refreshes the read bytes).
- j. Close the KVM tab to start viewing the installation process.
- k. On the CIMC interface under Server Summary, click **Power Cycle Server** to start the installation process.



- l. On the KVM Console/KVM terminal, confirm that the system is restarting and booting up from the Virtual CD/DVD.



Step 6 When the server console shows a login prompt proceed to the [“Configuring the Network Setup”](#) section on page 15.

Installing on a Virtual Server with Release 2.0 for the First Time

The installation process for a virtual server running Cisco StadiumVision Mobile software release 2.0 for the first time involves the following tasks:

- Verify that your virtual server meets the requirements listed in [Table 1](#) and [Table 2](#) in the [“Getting Started Installing or Upgrading Cisco StadiumVision Mobile Software”](#) module.
- Install VMWare ESX client software.



Note

Any VMware license that does not allow your virtual machine to be set to the minimum requirements described in [Table 1](#) and [Table 2](#) in the [“Getting Started Installing or Upgrading Cisco StadiumVision Mobile Software”](#) module is not supported. As of the release date for Cisco StadiumVision Mobile Release 2.0, VMware vSphere Hypervisor is not supported.

- Load the Cisco StadiumVision Mobile Release 2.0 (full ISO).
- Run the installation.

Configuring the Network Setup

This part of the installation process is common to all platforms and all Cisco StadiumVision Mobile software, and should be done after the initial software installation.

To configure the network setup, complete the following steps:

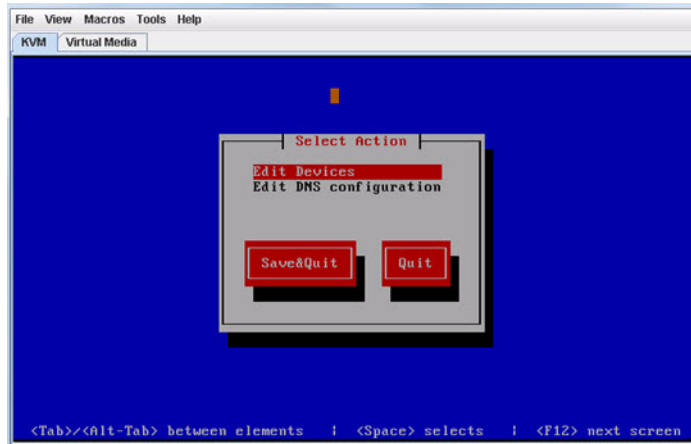
Step 1 Select **Network Configuration** from the menu.



Note

The network configuration window displays for approximately sixty minutes. If the window disappears, continue the network configuration using the TUI.

Step 2 Select **Edit Devices** and press **Enter**.



Step 3 Select **eth0** and press **Enter**.

Step 4 In the Ethernet Configuration, enter the network information. When done, select **OK** and press **Enter**.



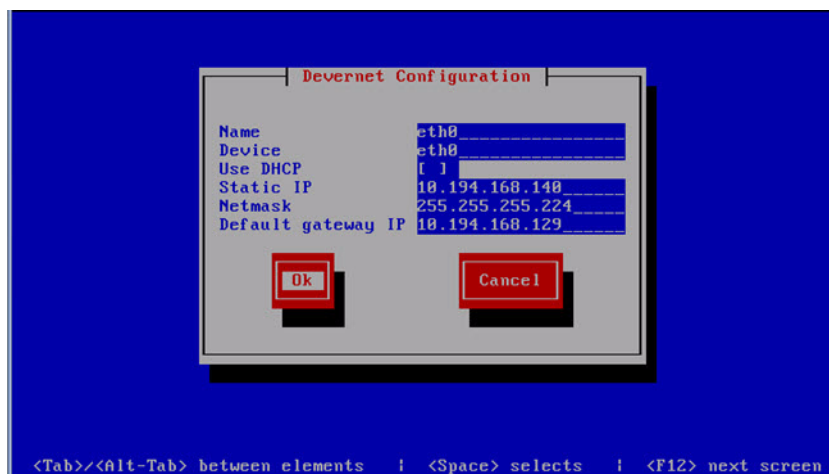
Note

The Linux screen is mislabeled "Devernet Configuration."

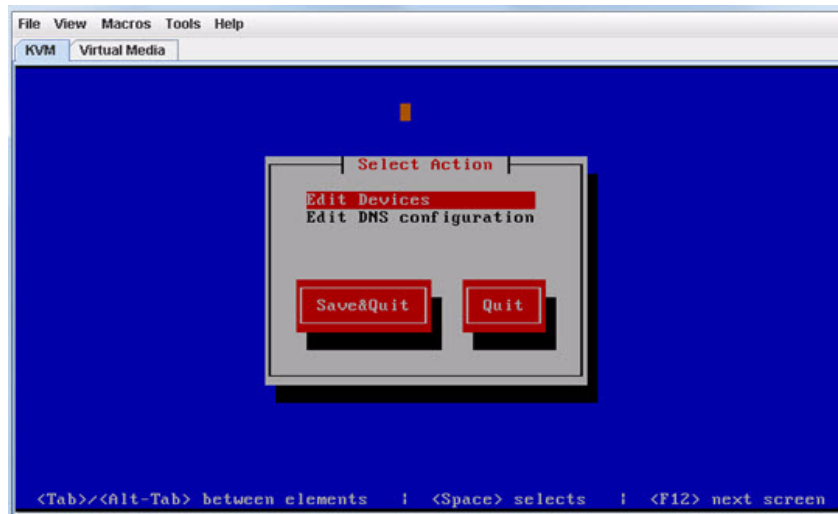


Note

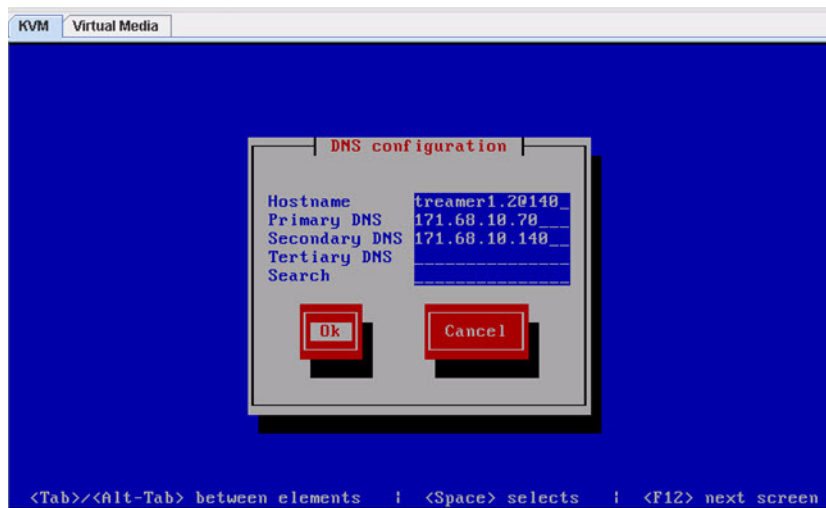
The Cisco StadiumVision Mobile Streamer or Cisco StadiumVision Mobile Reporter must use a static IP address.



- Step 5** Select **OK** and press the Enter key.
- Step 6** Select **Edit DNS configuration** and press **Enter**.



- Step 7** Enter DNS information. When done, select **OK**, and press **Enter**.



Note Do not use a period ('.') as part of the hostname.

- Step 8** Select **Save & Quit** and press **Enter**.
- Step 9** Select **Exit** and press **Enter**.

After this step, the Cisco StadiumVision Mobile software installs and the system reboots. This process takes up to 30 minutes. The installation should be completed. Validate the installation by logging into the Cisco StadiumVision Mobile Streamer or Cisco StadiumVision Mobile Reporter.

What To Do Next

This section describes procedures to perform after successfully installing Cisco StadiumVision Mobile software, and contains the following topics:

- [Logging into the TUI, page 18](#)
- [Setting the server time zone, page 19](#)
- [Setting the server date and time, page 19](#)
- [Configuring NTP, page 19](#)

Logging into the TUI

To access the TUI, you need either physical console access or an SSH client such as PUTTY. Log in from the console or over SSH with the following default credentials, using the IP address of the Cisco StadiumVision Mobile Reporter or Cisco StadiumVision Mobile Streamer:

```
username = installer  
password = cisco!123
```

Setting the server time zone

To set the server time zone, complete the following tasks:

**Note**

Set the time zone for both the Cisco StadiumVision Mobile Reporter and the Cisco StadiumVision Mobile Streamer.

-
- Step 1** Log into the TUI using the procedure in the [“Logging into the TUI”](#) section.
- Step 2** In the TUI, go to System Settings, Date and Time Settings, and Change timezone.
- Step 3** Choose the appropriate timezone from the list and enter the corresponding number.
-

Setting the server date and time

To set the server date and time, complete the following tasks:

**Note**

Set the server date and time for both the Cisco StadiumVision Mobile Reporter and the Cisco StadiumVision Mobile Streamer.

-
- Step 1** Log into the TUI using the procedure in the [“Logging into the TUI”](#) section.
- Step 2** In the TUI, go to System Settings, Date and Time Settings, and Set System date.
- Step 3** Enter the date using the following format:

MMDDHHMIYYYY for Month Day Hour Minute Year

Configuring NTP

To configure the Network Time Protocol (NTP), complete the following tasks:

**Note**

Configure NTP for both the Cisco StadiumVision Mobile Reporter and the Cisco StadiumVision Mobile Streamer.

-
- Step 1** Log into the TUI using the procedure in the [“Logging into the TUI”](#) section with the following credentials:
- ```
User: installer
Password: cisco!123
```
- Step 2** The TUI (Text Utility Interface) will appear on the screen.
- Step 3** Select **Configure NTP** from the System Settings/Date and Time Settings menu:



**Note** The default time zone is Eastern Standard Time (EST).

**Step 4** Set the NTP server address.



**Note** For the Cisco StadiumVision Mobile Reporter, it is critical that NTP be properly configured in order to provide accurate reports.

```

 .-.-.-.-.-.
 C i s c o S y s t e m s

StadiumVision Mobile Reporter Configuration Menu

Hostname: SVM-00
IP address: 10.194.168.131
Software version: 1.2.0 build 491 Time: Tue Jan 29 08:51

Main Menu > System Settings > Date and Time Settings

 Please choose one of the following menu options:

 a) Set system date
 b) Change timezone
 c) Set NTP server address
 d) Modify NTP configuration file
 R or < or ,) Return to prior menu

█
```