



Cisco StadiumVision Mobile Streamer Text Utility Interface

First Published: May 26, 2015

Revised: November 5, 2015

The StadiumVision Mobile Streamer Text Utility Interface (TUI) provides a console-based text interface for use by system installers and on-site troubleshooting personnel. The TUI can be used to perform routine system tasks such as modifying system configurations, changing passwords, and checking system logs. Remote TAC access and troubleshooting can both be facilitated from the TUI in the event of a Cisco StadiumVision Mobile Streamer outage or failure.

This module contains information that system administrators will use to configure and maintain the StadiumVision Mobile Reporter, and contains the following sections:

- [Logging into the TUI, page 29](#)
- [Using the TUI, page 31](#)

Logging into the TUI

To access the TUI, you need either physical console access or an SSH client such as PUTTY. Log in from the console or over SSH with the following credentials:

```
username = installer
password = cisco!123
```

You will be prompted to change the password on your first successful login. You also have the option of changing the password via the TUI.

File Editor

Several of the TUI options open server system files for you to modify using the Unix system vi editor. The following configuration files are editable from the TUI:

- DNS information—`/etc/resolv.conf`
- NTP server information—`/etc/ntp.conf`
- Server host information—`/etc/hosts`

Before modifying configuration files, you should be familiar with the simple editing techniques used within the vi editor. [Table 12](#) describes some of the more common vi Editor commands.

Table 12 *Common vi Editor Commands*

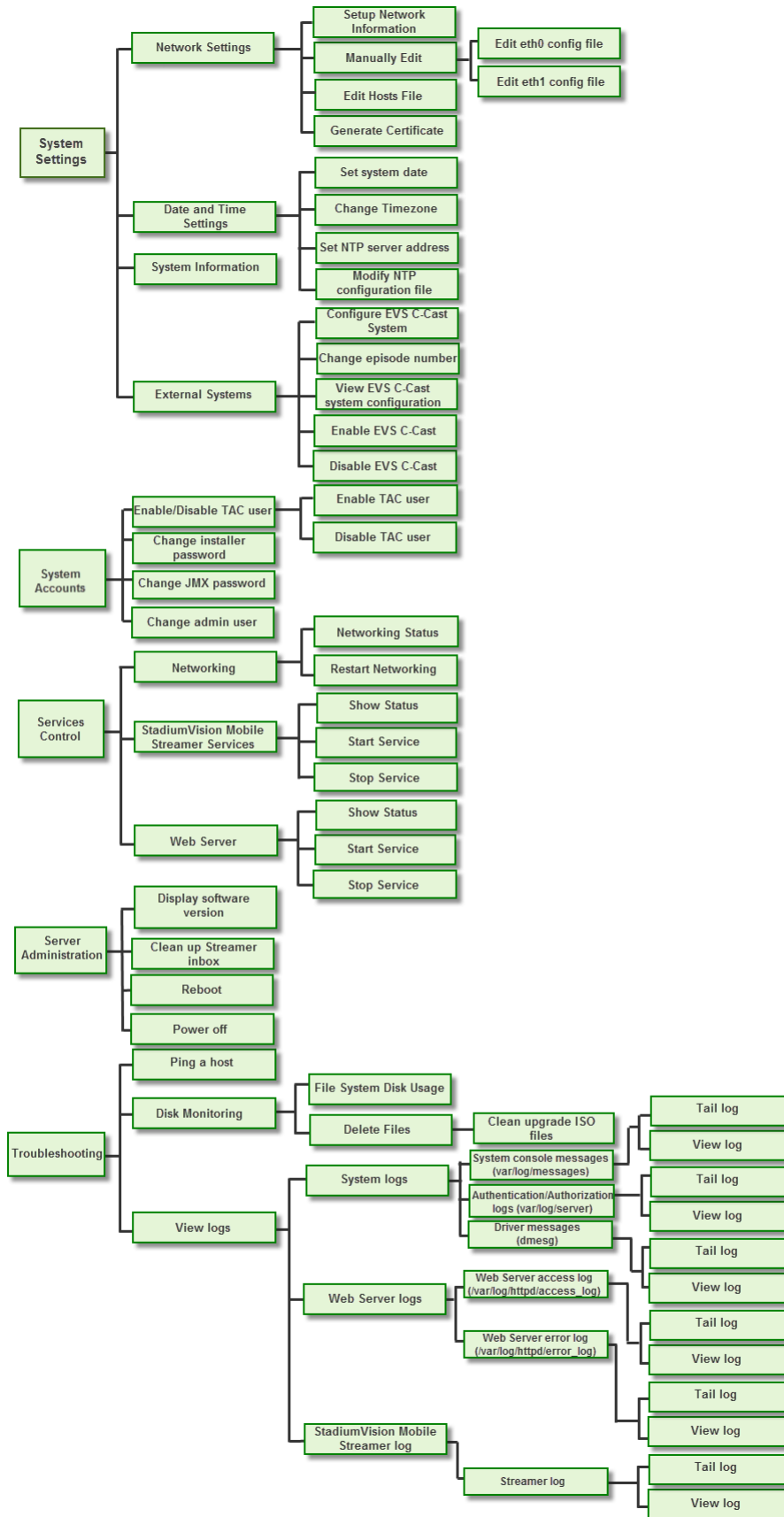
Command	Description
ZZ or :wq	Exit vi and save changes.
:q!	Exit vi without saving changes.
Esc key	Exit current mode and enter vi command mode.
Cursor Movement	
h	Move left (backspace).
j	Move down.
k	Move up.
l	Move right.
Enter key	Move to the beginning of the next line.
Inserting	
a	Append character after cursor.
i	Insert character before cursor. Enters INSERT mode.
r	Replace character under cursor with next character typed.
R	Keep replacing character until [Esc] is pressed.
Deleting	
db	Delete word before cursor.
dd	Delete line under cursor.
dw	Delete word under cursor.
x	Delete character under cursor.
P	Undo deletion of characters, words, or lines before cursor.
p	Undo deletion of characters, words, or lines after cursor.

Using the TUI

Figure 10 shows an overall view of the StadiumVision Mobile Streamer TUI. The following sections provide a brief description of each TUI menu item.

- [System Settings, page 33](#)
- [System Accounts, page 34](#)
- [Services Control, page 34](#)
- [Server Administration, page 35](#)
- [Troubleshooting, page 35](#)

Figure 10 Cisco StadiumVision Mobile Streamer TUI Hierarchy



System Settings

Network Settings

Setup Network Information

Allows for configuration of network devices and the DNS server

Manually edit network config file

- Edit eth0 config file - allows for configuration of Ethernet port 0
- Edit eth1 config file - allows for configuration of Ethernet port 1

Edit hosts file

Uses the vi editor to modify the /etc/hosts file

Generate certificate file

Generates a new networked certificate file

Data and Time Settings

The system date, timezone, and NTP server address should be set during the installation process. If these items were not configured during installation, it is critical to configure these items to avoid time drift and to ensure accurate reporting.

Set system date

Manually sets the date.

Change timezone

Allows for setting the timezone. Choose a number next to the correct timezone.

Set NTP server address

Allows for setting the Network Time Protocol (NTP). Enter an IP address for a valid NTP server.

Modify NTP configuration file

Allows for manually editing the NTP configuration file.

System Information

Displays network information for eth0 and eth1 ports, hosts file, DNS information, and NTP server information.

External Systems

Configure EVS C-Cast system

Sets the base URL for the EVS C-Cast system.

Change Episode Number

Allows for modifying the episode number. An episode number is defined by the EVS C-Cast system. When a new game or event is configured in the EVS C-Cast system, an episode number is generated and assigned to it automatically.

View EVS C-Cast system configuration

Shows the EVS C-Cast configuration.

Enable EVS C-Cast system

Enables the EVS C-Cast configuration.

Disable EVS C-Cast system

Disables the EVS C-Cast integration.

System Accounts

Enable/Disable TAC user

Enable TAC user

Enables a Cisco TAC representative to remotely troubleshoot the StadiumVision Mobile Streamer. This will allow for remote shell access which will be used for remote troubleshooting purposes. Always disable this access once you complete troubleshooting the system.

Disable TAC user

Disables remote shell access.

Change installer password

Changes the installer password.

Change JMX password

Changes the Java Management Extensions password, which may be used to allow JMX clients to monitor and troubleshoot the Streamer.

Change Admin user password

Changes the admin password.

Services Control

Networking

Networking status

Displays the status of ports eth0 and eth1

Restart networking

Restarts the networking service

StadiumVision Mobile Streamer Services

Show Status

Displays the streamer service status

Start Service

Starts the streamer service

Stop Service

Stops the streamer service

Web Server

Show Status

Displays the httpd service status

Start Service

Starts the httpd service

Stop Service

Stops the httpd service

Server Administration

Display Software Version

Displays the installed software version.

Clean up Streamer inbox

Deletes the files from the streamer inbox.

Setup automatic data archive

**Note**

This TUI option is not supported for Cisco StadiumVision Mobile Streamer and has been removed from the TUI in Release 2.1.1.

See the [“StadiumVision Mobile Streamer Log” section on page 36](#) for more information about backup and restore procedures.

Reboot

Reboots the StadiumVision Mobile Streamer.

Power Off

Powers the StadiumVision Mobile Streamer off.

Troubleshooting

Ping a host

Allows for connectivity testing by pinging an IP address.

Disk Monitoring

File System Disk Usage

Displays the system usage

Delete Files

- Clean upgrade ISO files

View logs

Log files are written as events transpire. The log files are available to be downloaded via HTTP. The log files are intended for a Cisco TAC representative to aid in troubleshooting. The log files are rotated out of the system, typically after 20 days.

System logs

- System console messages (/var/log/messages)
 - Tail log
 - View log
- Authentication/Authorization logs (/var/log/secure)
 - Tail log
 - View log
- Driver messages (dmesg)
 - Tail log
 - View log

Web Server logs (httpd)

- Web Server access log (/var/log/httpd/access_log)
 - Tail log
 - View log
- Web Server error log (/var/log/httpd/error_log)
 - Tail log
 - View log

StadiumVision Mobile Streamer Log

- Streamer log
 - Tail log
 - View log