



# Installing Cisco StadiumVision Director Remote Software on a Server for the First Time

---

**First Published: April 21, 2014**

**Revised: July 23, 2014**

This module describes how to install the Cisco StadiumVision Director Remote Release 3.2 software from an Open Virtual Appliance (OVF) template that is downloaded from Cisco.com. The process applies to a brand new server that has *never* been installed with any version of Cisco StadiumVision Director Remote software.

This module includes the following topics:

- [Prerequisites, page 5](#)
- [Installation Tasks, page 5](#)
- [Performing the Full ISO Installation, page 13](#)
- [What To Do Next, page 14](#)

## Prerequisites

Be sure that the following requirements are met before you install the Cisco StadiumVision Director Remote software:

- Be sure that your system meets the requirements documented in the [“Getting Started Installing or Upgrading a Cisco StadiumVision Director Remote Server”](#) module on page 1.
- If you are installing on the Cisco UCS C22 server, you have a copy of or access to the [Cisco UCS C-Series Servers VMware Installation Guide](#) on Cisco.com.
- You have purchased the appropriate licensing and have contacted Cisco Technical Support for access to download the Cisco StadiumVision Director Remote OVF file.

## Installation Tasks

To install the Cisco StadiumVision Director Remote software, complete the following tasks:

- [Downloading the Software, page 6](#) (required)
- [Installing the VMware vSphere Software, page 7](#) (required)
- [Configuring the vSphere Host, page 7](#) (required)

- [Deploying the Cisco StadiumVision Director Remote OVF Template on the VMware vSphere Host, page 9](#) (required)
- [Performing the Full ISO Installation, page 13](#) (required)

## Downloading the Software

Be sure to download the files to a location, such as a laptop computer, where you can access them for installation onto the Cisco StadiumVision Director Remote server:

- [Downloading the Cisco StadiumVision Director Remote OVF File, page 6](#) (required)
- [Downloading the VMware vSphere Software, page 6](#) (required)
- [Downloading the VMware vSphere Client, page 6](#) (required)

## Downloading the Cisco StadiumVision Director Remote OVF File

You are eligible to obtain information about how to access the Cisco StadiumVision Director Remote OVF file after you have purchased the proper licensing. Contact Cisco Technical Support for information about how to download the OVF file ([Table 1](#)).

**Table 1** OVF Template Filename Conventions

---

### OVF .ZIP Filename

---

SV-REMOTE\_FULL\_TEMPLATE\_3.2.0-XXX-Y.x86\_64.zip<sup>1</sup>

---

1. “XXX” represents the build number and “Y” is the version of the OVF for that build.

## Downloading the VMware vSphere Software



### Note

Cisco StadiumVision Director Remote supports VMware vSphere version 5.1 and 5.5. If your server already has this VMware vSphere software version installed, you can skip this task.

---

**To download the VMware vSphere software, complete the following steps:**

---

- Step 1** Go to the VMware software download site at:  
<http://www.vmware.com/download/>
- Step 2** Locate the VMware vSphere software link and follow the instructions on the VMware site.
- 

## Downloading the VMware vSphere Client



### Note

The VMware vSphere Client software requires the Microsoft Windows operating system. If the computer that you will use to deploy the Cisco StadiumVision Director Remote OVF already has VMware vSphere Client software installed, skip this task.

---

The VMware vSphere Client software is required to install the Cisco StadiumVision Director OVF file.

**To download the VMware vSphere client, complete the following steps:**

- 
- Step 1** Go to the VMware software download site at:  
<http://www.vmware.com/download/>
- Step 2** Locate the VMware vSphere client software link and follow the instructions on the VMware site to download and install the software on the computer that you will use to access the VMware vSphere host.
- 



**Tip**

Alternatively, you can download the VMware vSphere Client software when you access the VMware vSphere host. For more information, see the “[Deploying the Cisco StadiumVision Director Remote OVF Template on the VMware vSphere Host](#)” section on page 9.

---

## Installing the VMware vSphere Software



**Note**

If VMware vSphere version 5.1 or 5.5 is already installed and configured on your server, skip this task.

---

**To install and configure the VMware vSphere software, complete one of the following steps:**

- If installing on your own equipment, follow the VMware vSphere installation instructions for your hardware.
- If installing on the Cisco UCS C22 server, follow the instructions to install the VMware ESX software using the “VMware vSphere ESX Installation” module in the *Cisco UCS C-Series Servers VMware Installation Guide*.

## Configuring the vSphere Host

After you have installed the VMware vSphere software, you need to configure the settings for your network environment. For more information about customizing the VMware vSphere configuration, see the *VMware vSphere Installation and Setup Guide* for your release under the Datacenter Product Documentation area of the VMware Documentation site at:

<http://www.vmware.com/support/pubs/>



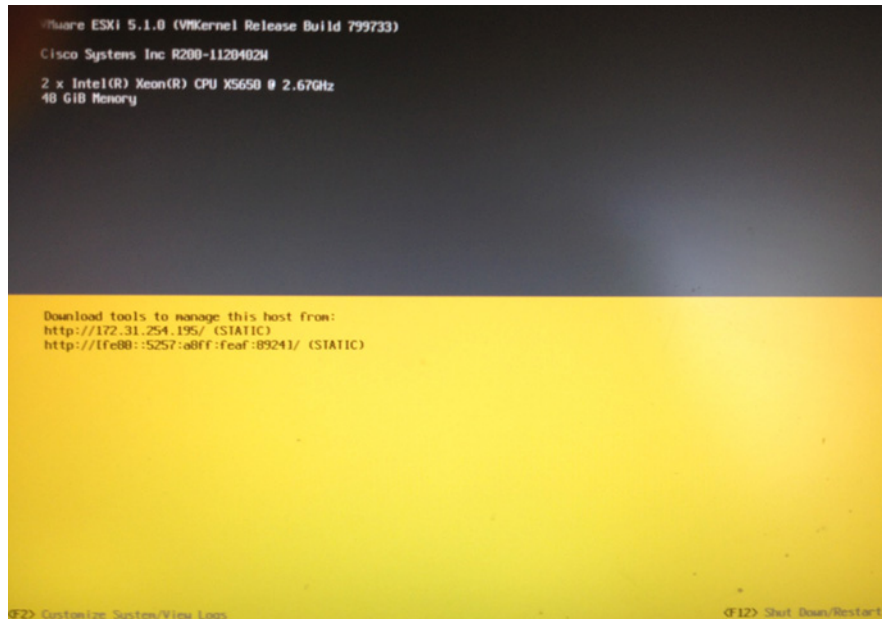
**Tip**

If you are configuring the vSphere host on a Cisco UCS C22 server, you also can access the vSphere host from the KVM console if a connection has been mapped to the vSphere management interface.

---

**To configure the vSphere host, complete the following steps:**

- 
- Step 1** To customize the VMware vSphere configuration, press **F2** at the ESX initialization screen. [Figure 1](#) shows an example of an ESX initialization screen.

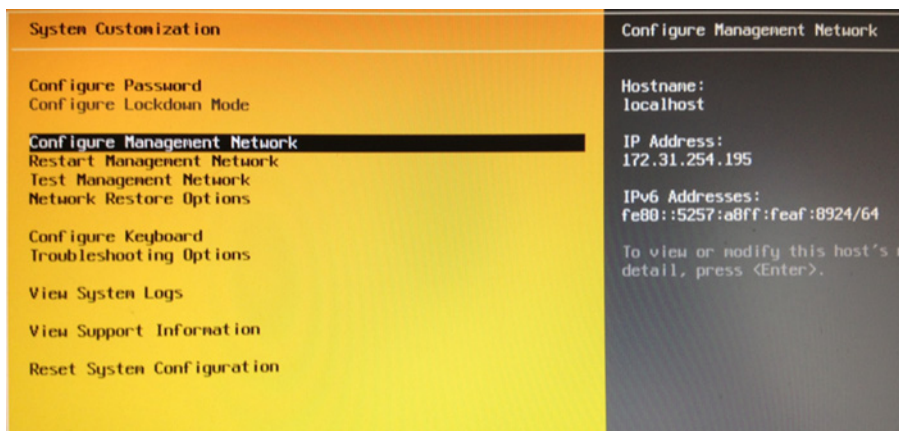
**Figure 1** Sample VMware ESX Initialization Screen

- Step 2** At the System Customization screen, select the **Configure Password** option to specify a password for the administrator account.
- The administrative user name for the ESX host is **root**. By default, the administrative password is not set.
- Step 3** Specify the new password and repeat the entry for confirmation and then press **Enter**.

**Tip**

You will use the root account and password to log into the VMware ESX host to install the Cisco StadiumVision Director Remote OVF template.

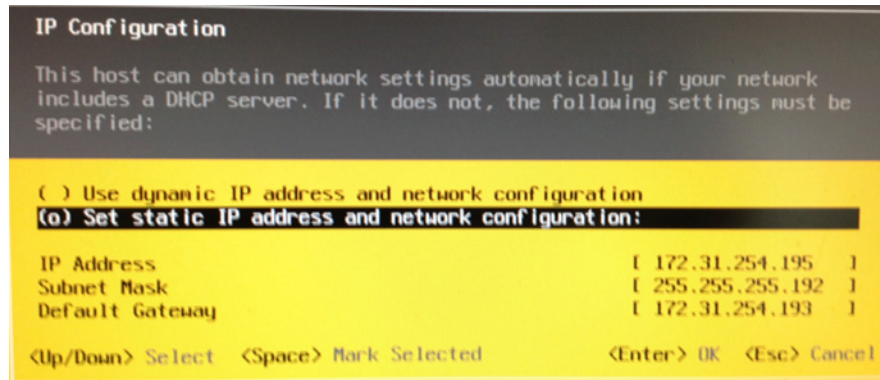
- Step 4** From the System Customization screen, select the **Configure Management Network** option as shown in the example in [Figure 2](#) and press **Enter**.

**Figure 2** Sample VMware System Customization Screen

- a. Select the **IP Configuration** option and press **Enter**.

Figure 3 shows an example of the IP Configuration screen.

**Figure 3** Sample IP Configuration Screen



- b. Modify the IP address configuration according to your network environment and press **Enter**.



**Note** The Cisco StadiumVision Director Remote server should be configured with a static IP address or a non-expiring DHCP lease.



**Tip** You will use this IP address to access the VMware ESX host from your computer's web browser.

- c. (Optional) To change the ESX hostname and domain, choose the DNS configuration option and press **Enter**. The default hostname is localhost. When your updates are complete, press **Enter**.

**Step 5** Restart the management network.

Verify that the IP address information on this screen correctly shows the changes that you made.

## Deploying the Cisco StadiumVision Director Remote OVF Template on the VMware vSphere Host

### Prerequisites

Before you install the Cisco StadiumVision Director Remote OVF template, be sure that the following requirements are met:

- The VMware vSphere Client is required to install the Cisco StadiumVision Director Remote OVF template.

If you have not already downloaded and installed the VMware vSphere Client on the computer that you will use to access the VMware vSphere host, then a link to download and install the software is provided when you log into the VMware vSphere host.

- Download and unzip SV-REMOTE\_FULL\_TEMPLATE\_3.2.0-XXX-Y.x86\_64.zip to extract the OVF file. SV-REMOTE\_FULL\_TEMPLATE\_3.2.0-XXX-Y.x86\_64.zip contains:

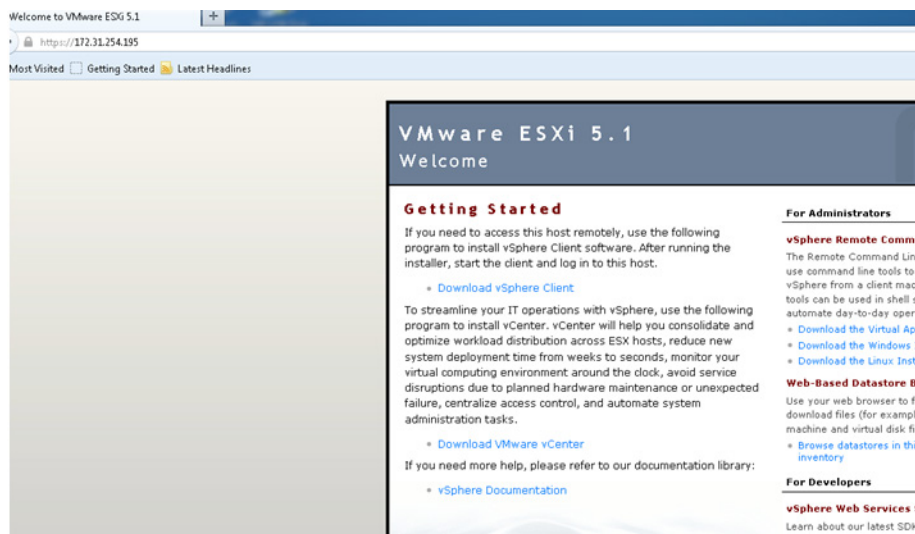
- SV-REMOTE\_FULL\_TEMPLATE\_3.2.0-XXX-Y.ovf (XML VM descriptor file - text)
- SV-REMOTE\_FULL\_TEMPLATE\_3.2.0-XXX-Y.vdmk (VM disk file - binary)
- SV-REMOTE\_FULL\_TEMPLATE\_3.2.0-XXX-Y.mf (Checksum file - text)
- SV-REMOTE\_FULL\_TEMPLATE\_3.2.0-XXX-Y.iso (SVD full installation ISO file - binary)

**You can access a link to download the VMware vSphere Client after you have installed the ESX host by completing the following steps:**

**Step 1** From a web browser, type the IP address of the VMware vSphere host.

The VMWare ESX Welcome Screen is displayed as shown in the example in [Figure 4](#).

**Figure 4** Sample VMware Welcome Screen



**Step 2** Click the **Download vSphere Client** link as shown on the Welcome screen ([Figure 4](#)).

Follow the VMware instructions to download and install the software.

- The computer from which you will run the VMware vSphere Client has access to the network where the ESX host is installed.
- You have a copy of or access to the *vSphere Virtual Machine Administration Guide* from the VMware Documentation site for information about how to deploy the OVF template.

## Procedure

**To install the Cisco StadiumVision Director Remote OVF template on the VMware vSphere host, complete the following steps:**

**Step 1** Start the VMware vSphere Client.

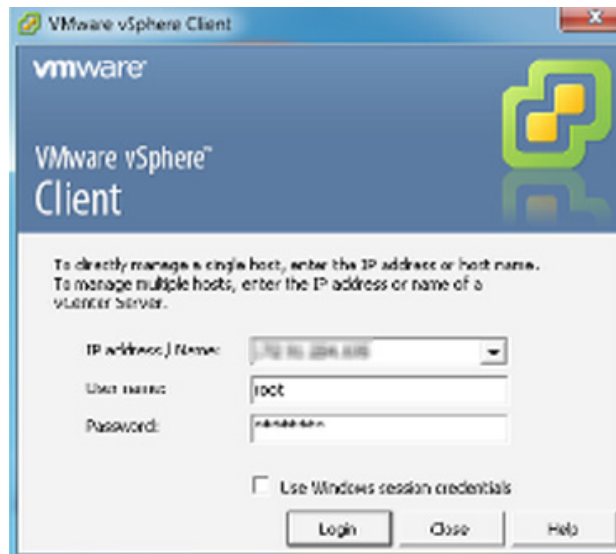
**Step 2** In the VMware vSphere Client window, type the following information:

- IP address / Name: IP address of the vSphere host (or name of host if using DNS)
- User name for the administrator account: **root**
- Password for the administrator account.



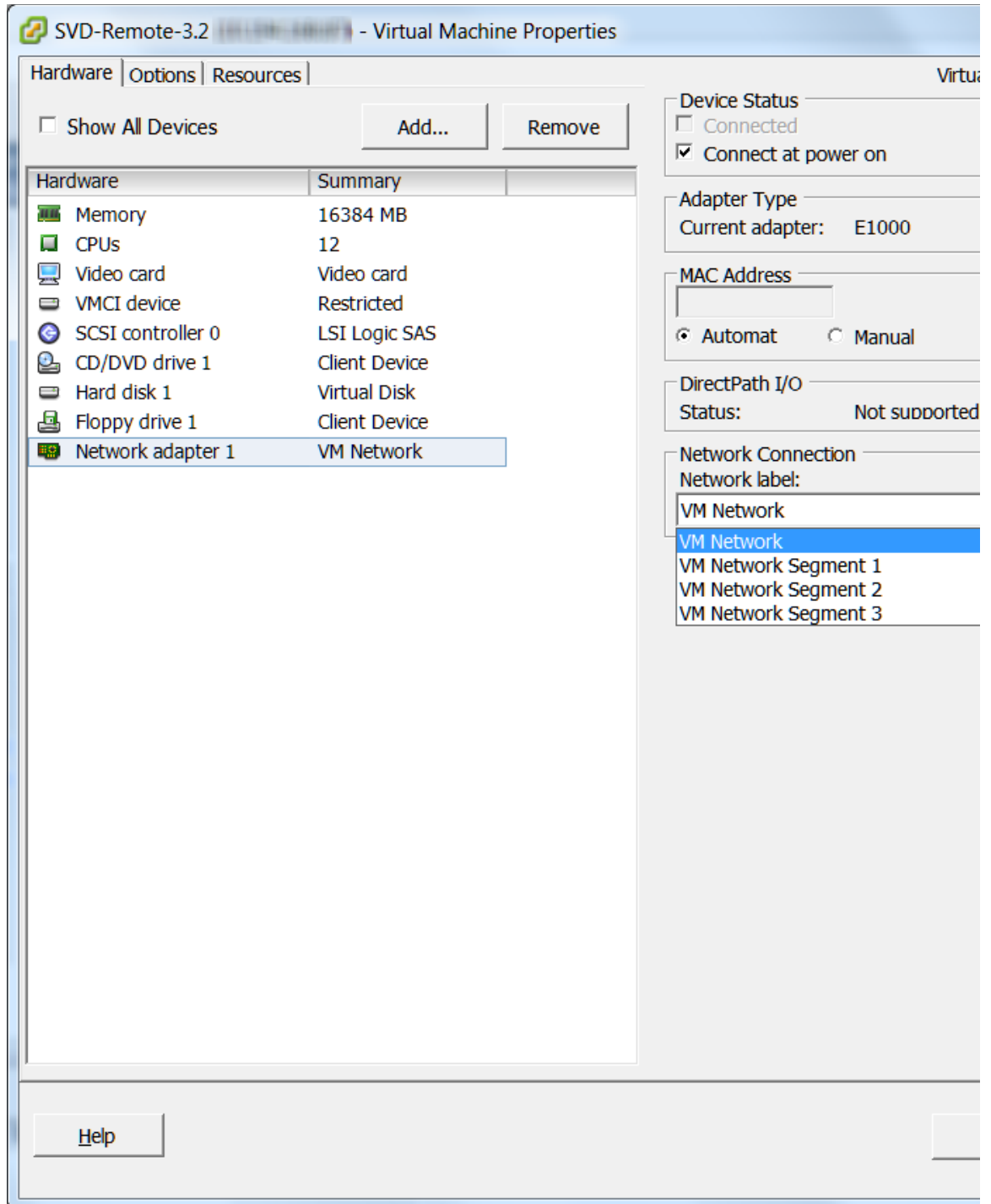
**Tip** This information is configured in the vSphere host. For more information, see the [“Installing the VMware vSphere Software”](#) section on page 7.

**Figure 5** Sample VMware vSphere Client



- Step 3** From the File menu, click **Deploy OVF Template**.
- Step 4** To select the source location for the template, click **Browse** and locate the OVF template for the Cisco StadiumVision Director Remote software that you downloaded and unzipped to your computer.
- Step 5** Once the import completes, right click on the VM and edit the network settings pertinent to your configuration.

**Figure 6** Sample VMware vSphere Virtual Machine Properties



**Step 6** Click **Next** to step through the installation wizard screens to read and accept the license and set the installation options:

- Specify a Name and data store location.
- Select thin provisioning disk format.



- Step 7** Review your configuration and click **Finish**.

## Performing the Full ISO Installation

To install the full ISO, power on the Cisco StadiumVision Director Remote server from VMware by completing the following steps:

- Step 1** Start the VMware vSphere Client and log in as root user.
- Step 2** From the inventory list, right-click on the name of the Cisco StadiumVision Director Remote server machine.
- Step 3** Select **Power > Power On**.
- Step 4** From the management console for Cisco StadiumVision Director Remote, click the **Console** tab as shown in [Figure 7](#).

The Cisco StadiumVision Director Remote installation begins. You will be asked to configure your deployment with the IP address, hostname and other settings. If you do not configure these during installation, you will need to configure them later after the Cisco StadiumVision Director Remote install has been completed.

**Figure 7** Sample Console Output During Cisco StadiumVision Director Remote Power On

```

SVDRemote_full_template
Getting Started Summary Resource Allocation Performance Events Console Permissions

Setting clock (localtime): Tue Nov 27 08:14:28 PST 2012 [ OK ]
Starting udev: [ OK ]
Loading default keymap (us): [ OK ]
Setting hostname default: [ OK ]
Setting up Logical Volume Management: 2 logical volume(s) in volume group "volGroup00" now active [ OK ]
Checking filesystems
/dev/volGroup00/rootVol00: clean, 27545/55377920 files, 1992232/55361536 blocks [ OK ]
/boot: clean, 35/26104 files, 15843/104388 blocks [ OK ]
Remounting root filesystem in read-write mode: [ OK ]
Mounting local filesystems: [ OK ]
Enabling /etc/fstab swaps: [ OK ]
INIT: Entering runlevel: 3
Entering non-interactive startup
Starting monitoring for UG volGroup00: /dev/hdc: open failed: Read-only file system
2 logical volume(s) in volume group "volGroup00" monitored [ OK ]
Starting sysstat: Calling the system activity data collector (sadc): [ OK ]
Checking for hardware changes [ OK ]
Bringing up loopback interface: [ OK ]
Bringing up interface eth0: _

```

- Step 5** Observe the output on the console to confirm that the filesystems, drives, and interfaces successfully come up (indicated by “OK” beside the system area).

## What To Do Next

After you have installed the Cisco StadiumVision Director Remote software, go to the “[Configuring Cisco StadiumVision Director Remote Servers](#)” module of the *Cisco StadiumVision Director Server Administration Guide, Release 3.2* to set up the remote server for network communication and connectivity to the Cisco StadiumVision Director server.

Be sure to note the IP address that you configured for the VMware vSphere host because it will be needed to complete the Cisco StadiumVision Director Remote configuration.