



Appendix C: Installing Additional Hard Drives in the Platform 2 Server to Prepare for Upgrade to Release 3.2

First Published: April 21, 2014

The Cisco StadiumVision Director Platform 2 server ships with two 300 GB hard drives configured with RAID 1 mirroring for redundancy. This module describes how to install two additional 300 GB hard drives (SV-FRU2-HD3G=) for another RAID 1 volume in the Cisco StadiumVision Director Platform 2 Server which are required to run Cisco StadiumVision Director Release 3.2 with a minimum of 4 drives.



Caution

If you need to install additional hard drives in the Platform 2 server to meet the 4-drive minimum requirement to support Release 3.2, then you must perform different upgrade tasks in a certain order.

The physical installation of the additional drives must precede the upgrade to Release 3.1.0-797 (SP2), which is the required prerequisite release to upgrade to Release 3.2.

Refer to the *Cisco StadiumVision Director Software Installation and Upgrade Guide, Release 3.1* followed by extension of the RAID volume post-upgrade, and then content migration and the remainder of the upgrade verification.

Contents

- [Prerequisites, page 53](#)
- [Installation Tasks, page 54](#)

Prerequisites

Be sure that the following requirements are met before you upgrade your server:

- Your current CIMC/BIOS firmware version is a minimum of 1.5(1).
- You have completed running any proof of play reports.
- You have completed a backup and have a copy stored externally to the Cisco StadiumVision Director servers.

- You have installed Cisco StadiumVision Director Release 3.1.0-797 SP2 on your Platform 2 servers.
- You have physical access to the server.
- A monitor and keyboard are connected to the Cisco StadiumVision Director server.
- You can log into the server at the console or over the network with SSH.
- You have two new 300 GB R2 Disk Spare drives (SV-FRU2-HD3G=) for the Platform 2 server.



Note These hard drives are no longer generally available. If you need to obtain spare drives, contact your Cisco Systems sales representative for more information.

Installation Tasks

To install additional hard drives, complete the following tasks:

- [Installing the Hard Drives Into the Server Chassis, page 54](#) (required)
- [Creating a New Logical Volume Using the LSI MegaRAID Utility, page 55](#) (required)
- [Extending the Original RAID Volume to Create a Single Group, page 58](#) (required)

Installing the Hard Drives Into the Server Chassis

This task describes how to physically install two additional 300 GB drives into the Cisco StadiumVision Director Platform 2 server.

To install the hard drives into the server chassis, complete the following steps:

- Step 1** Log into the Cisco StadiumVision Director server with the “installer” credentials either directly at the console or over the network using SSH.



Note Unless the values have been changed, the default userid is “installer” with password “cisco!123.”

- Step 2** When the StadiumVision Director Configuration menu for the Text Utility Interface (TUI) appears, type **m** and press **Enter** to shut down the server.

- Step 3** A message appears asking you to confirm the shutdown.

```
WARNING: THIS WILL SHUTDOWN THE SERVER!! Are you sure?
```

```
PRESS Y TO CONTINUE, PRESS N TO CANCEL
```

Type **Y**.

The server begins to shut down and a series of messages are displayed:

```
System is shutting down. You will be logged out shortly.
Broadcast message from root (pts/0) (Tue May 8 21:28:00 2012):
```

```
The system is going DOWN for system halt in 1 minute!
```



Note If the server reboots instead of powers down it is probably running an older firmware. For more information, see the [“Upgrading the CIMC and BIOS Firmware on a Cisco StadiumVision Director Platform 2 Server”](#).

Step 4 Install the new 300 GB hard drives into Slot 2 and Slot 3 of the server chassis.

For information about physically installing the hard drives on the Platform 2 server, see the [“Maintaining the Server”](#) chapter of the *Cisco UCS C200 Installation and Service Guide*.

Creating a New Logical Volume Using the LSI MegaRAID Utility

This task creates another RAID 1 logical volume composed of the two new drives.

For more information about RAID on the Cisco StadiumVision Director Platform 2 server, such as the meaning of the beep codes, see the [“RAID Controller Considerations”](#) chapter of the *Cisco UCS C200 Installation and Service Guide*.



Note It is recommended that you have a mouse or other similar device attached to the sever so that you can perform the installation steps more easily.

To create a new logical volume using the LSI MegaRAID utility, complete the following steps:

Step 1 Power on the Cisco StadiumVision Director server where you physically installed the two new hard drives.

Step 2 Press **Ctrl-H** to open the LSI MegaRAID utility when prompted.



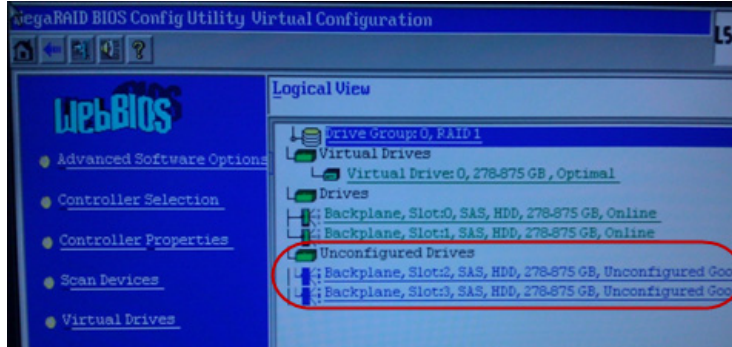
Note Be sure to press Ctrl-H when prompted by the LSI MegaRAID utility. If you miss the prompt or reach the boot menu before seeing it, press Ctrl-Alt-Del to reboot the server and try again.

Step 3 Create a new logical volume with the two new drives in a RAID 1 configuration by completing the following steps:



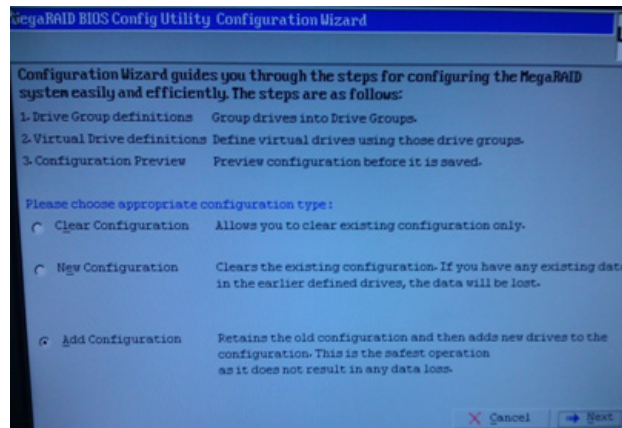
Note Only drives in “Unconfigured Good” state are available for RAID configuration. New drives must show up as unconfigured before you proceed ([Figure 1](#)).

Figure 1 *Unconfigured Drives in Good State*



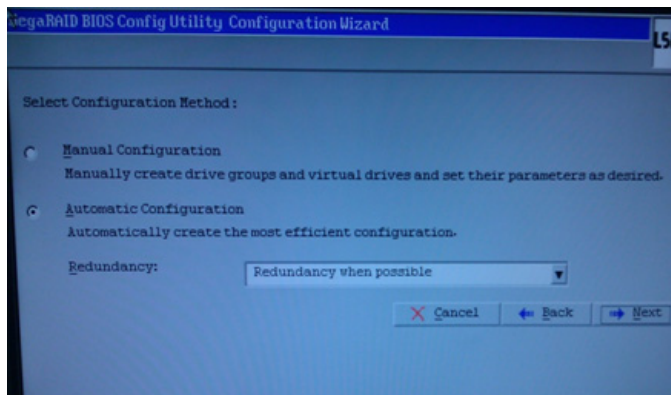
- a. Select **Add Configuration** and click **Next** (Figure 2).

Figure 2 *Add Configuration Wizard*



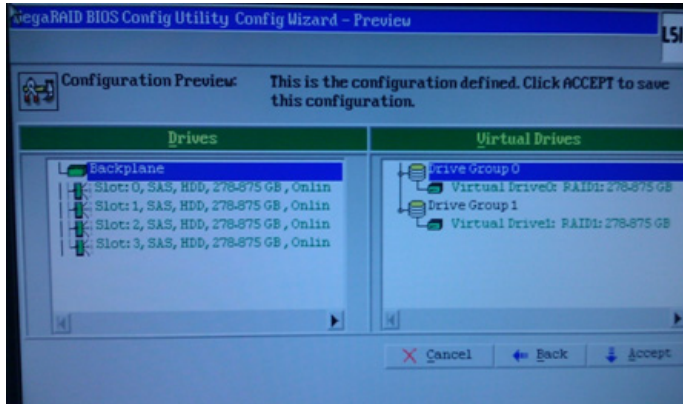
- b. Select **Automatic configuration** with the **Redundancy when possible** option. Click **Next** (Figure 3).

Figure 3 *Configuration Method Screen*



- c. The Configuration Preview screen is displayed showing the 4 hard drives in 2 drive groups. Click **Accept** (Figure 4).

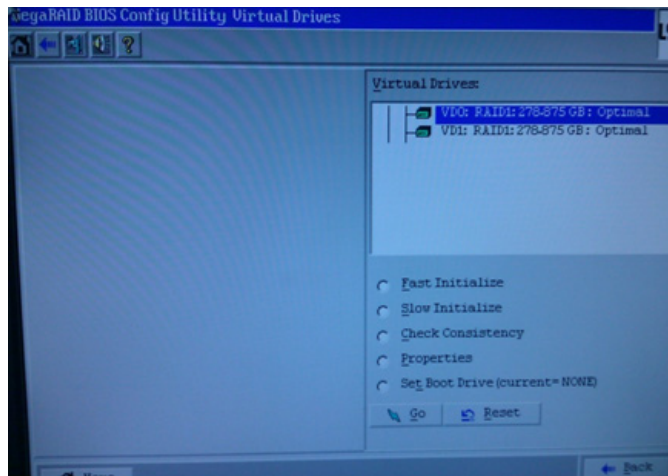
Figure 4 *Accept Configuration Preview*



A fast disk initialization automatically begins.

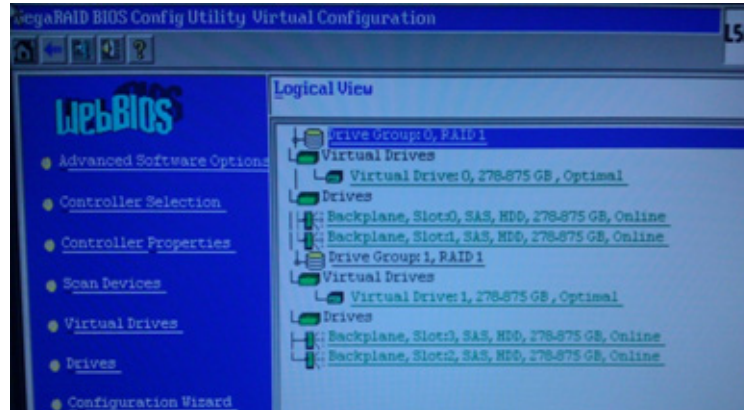
- d. When the screen showing initialization options is displayed, only click **Back** (Figure 5).

Figure 5 *Initialization Options—Click Back Only*



- e. The Logical View screen shows the 4 hard drives online, including the two new drives in Slot 2 and Slot 3 (Figure 6).

Figure 6 Logical View of Hard Drives



- Step 4** Exit the MegaRAID utility.

Extending the Original RAID Volume to Create a Single Group

This task describes how to extend at the OS level the original logical volume on which Cisco StadiumVision Director is installed to include the new RAID 1 volume. This will create a volume group where Cisco StadiumVision Director sees the four drives as one volume with a total of 600 GB storage.

To extend the original RAID volume to create a single group in the Release 3.2 software, complete the following steps:

-
- Step 1** Log into the TUI by doing the following:
- a. Use a directly connected console, or use an SSH client from a laptop computer that is connected to the Cisco StadiumVision Server network to run a secure login to the secondary Cisco StadiumVision Director server using the IP address for your server.
 - b. When the login prompt appears, enter the **installer** userid followed by the installer password at the password prompt.
- Step 2** From the Main Menu, go to the **StadiumVision Server Administration > Hard Drive Expansion** option.
- Step 3** When the following confirmation message appears, type Y if you are prepared to continue, or N to cancel.
- ```
WARNING: You will lose data that may be stored in the new drives. Do you want to continue?
PRESS Y TO CONTINUE, PRESS N TO CANCEL
```
- Step 4** Press any key to return to the StadiumVision Server Administration menu.
- Step 5** Continue to return to the Main Menu and exit the TUI.
-

## What To Do Next

After you extend the RAID volume, return to the [“Upgrading a Cisco StadiumVision Director Server from Release 3.1 SP2 to Release 3.2”](#) to complete the upgrade tasks and perform the migration of content to the Release 3.2 CMS.

■ What To Do Next