



Installing Cisco StadiumVision Director Software from a DVD

First Published: May 29, 2012

Revised: August 2, 2012

This module describes how to install the Cisco StadiumVision Director Release 3.0 software from an installation DVD that ships with your newly-purchased server hardware. The process applies to a brand new server that has *never* been installed with any version of Cisco StadiumVision Director software.

This module includes the following topics:

- [Prerequisites, page 17](#)
- [Information About Installing Cisco StadiumVision Director Software from a DVD, page 18](#)
- [Installing the Software, page 18](#)
- [Verifying a New Installation, page 21](#)
- [What to Do Next, page 23](#)

Prerequisites

Be sure that the following requirements are met before you upgrade your server:

- Your new server is installed in its production location and does not currently have any version of the Cisco StadiumVision Director software installed. For more information about installing your hardware, go to: http://www.cisco.com/en/US/products/ps11274/prod_installation_guides_list.html
- Verify that a monitor and keyboard are connected to the Cisco StadiumVision Director server.
- Be sure to have the network information required to configure the Ethernet connection on the Cisco StadiumVision Director server, such as:
 - IP address (IPv4 only) and network mask
 - Default gateway address
 - DNS server address
 - Hostname
- You have a supported browser version for Cisco StadiumVision Director. For more information about the latest supported browsers, see the [Cisco StadiumVision Release Notes for Release 3.0](#).
- The Cisco StadiumVision Director server is connected to the network and has power.

- To access the Text Utility Interface (TUI) to verify the installation, you can use a directly connected console or be sure that you have a laptop computer connected to the same network as the Cisco StadiumVision Director server with an SSH client (such as PuTTY).

Information About Installing Cisco StadiumVision Director Software from a DVD

**Note**

The DVD that is shipped in the box might not be the most recent version of the software.

The installation program automatically begins when you install the DVD into the server drive and boot the server by either powering the server off or using the reset switch.

The installation DVD program will present you with screens asking you to confirm or provide information before moving to the next installation screen.

Navigating the Installation Screens

**Note**

The installation program only supports keyboard controls and not any mouse selection. Each screen also provides information about how to navigate through the options and screens.

To provide input to the prompts on the installation screens, use the following keys:

- To move between selection options on the screen—Press **Tab** or **Alt-Tab**.
- To confirm selection of an option on the screen—Press the **spacebar**.
- To accept your selection and move to the next installation screen—Press **F12**.

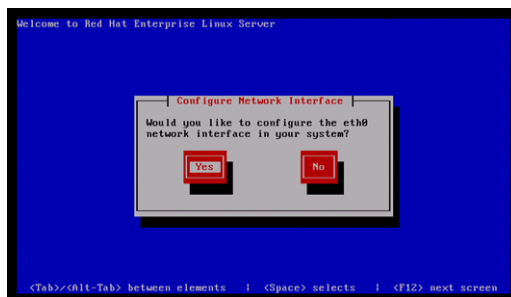
Installing the Software

To install Cisco StadiumVision Director Release 3.0 software for the first time on a new server, complete the following steps:

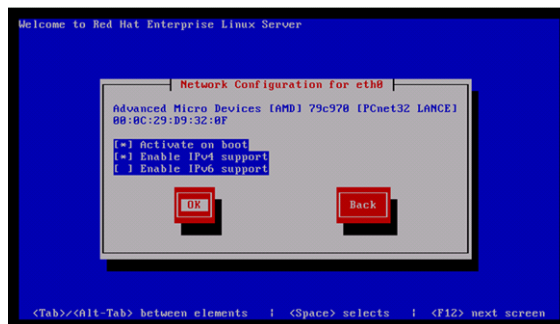
-
- Step 1** Insert the installation disk into the DVD drive, power on or reset the server, and follow the prompts. The server will boot from the installation disk.



Step 2 At the Configure Network Interface screen, press the **spacebar** to select **Yes**:



Step 3 In the Network Configuration for eth0 screen, select **Activate on boot** and **Enable IPv4 support** and select **OK**:

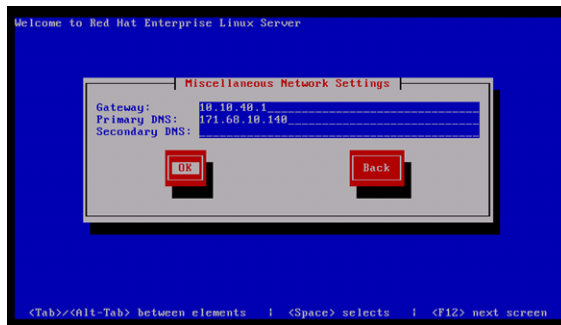


Step 4 In the IPv4 Configuration for eth0 screen, do the following:

- a. Select **Manual address configuration**.
- b. Type the **IPv4 address** for the server.
- c. Type the **Prefix** (network mask) for the IP address.
- d. Select **OK**.



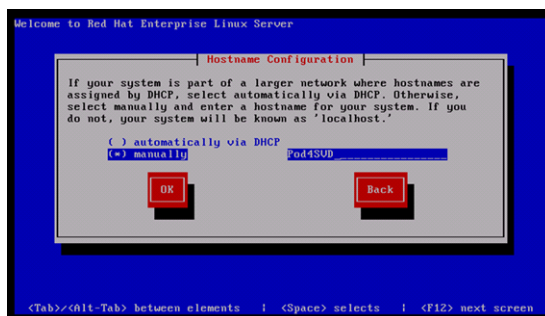
- Step 5** In the Miscellaneous Network Settings screen, do the following:
- Type the IPv4 address of the default gateway.
 - Type the IPv4 address(es) of the primary and secondary (if used) Domain Name Server (DNS).
 - Select **OK**.



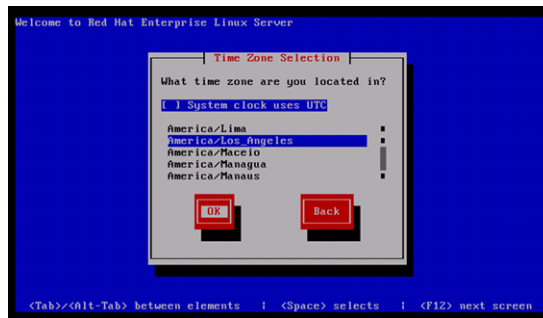
- Step 6** In the Hostname Configuration screen, select **manually** and type a host name for your system. Select **OK**.

**Tip**

When specifying a hostname for the server, use a descriptive name that identifies the location or customer and the server number. For example: svd-mylocation-1.



- Step 7** In the Time Zone Selection screen, select the time zone and select **OK**.



The Linux bootloader screen is briefly displayed and the Cisco StadiumVision Director software begins to install.

When complete, the DVD is ejected, and the system reboots. You are returned to the Cisco StadiumVision Director server console login prompt.

This process takes about 30 minutes.

Verifying a New Installation

To verify a new installation of Cisco StadiumVision Director Release 2.4, complete the following steps:

- Step 1** Use a directly connected console, or use an SSH client from a laptop computer that is connected to the Cisco StadiumVision Server network to run a secure login to the Cisco StadiumVision Director server using the IP address for your server.



Tip Using an SSH client allows you to scroll in some of the larger TUI menus.

- Step 2** When the login prompt appears, enter the **installer** userid followed by the installer password (default is **cisco!123**) at the password prompt.
- Step 3** When the StadiumVision Director Configuration menu appears, type **p** and press **Enter**:

Verifying a New Installation

```

                +-----+
                |         |
                |         |
                |         |
                |         |
                |         |
                |         |
                |         |
                |         |
                |         |
                |         |
                |         |
                |         |
                |         |
                |         |
                |         |
                |         |
                |         |
                |         |
                |         |
                |         |
                +-----+
                |         |
                |         |
                |         |
                |         |
                |         |
                |         |
                |         |
                |         |
                |         |
                |         |
                |         |
                |         |
                |         |
                |         |
                |         |
                |         |
                |         |
                |         |
                |         |
                +-----+
                |         |
                |         |
                |         |
                |         |
                |         |
                |         |
                |         |
                |         |
                |         |
                |         |
                |         |
                |         |
                |         |
                |         |
                |         |
                |         |
                |         |
                |         |
                |         |
                |         |
                +-----+
                |         |
                |         |
                |         |
                |         |
                |         |
                |         |
                |         |
                |         |
                |         |
                |         |
                |         |
                |         |
                |         |
                |         |
                |         |
                |         |
                |         |
                |         |
                |         |
                |         |
                +-----+

+-----+
|         |
|         |
|         |
|         |
|         |
|         |
|         |
|         |
|         |
|         |
|         |
|         |
|         |
|         |
|         |
|         |
|         |
|         |
|         |
|         |
|         |
+-----+
|         |
|         |
|         |
|         |
|         |
|         |
|         |
|         |
|         |
|         |
|         |
|         |
|         |
|         |
|         |
|         |
|         |
|         |
|         |
|         |
|         |
+-----+
|         |
|         |
|         |
|         |
|         |
|         |
|         |
|         |
|         |
|         |
|         |
|         |
|         |
|         |
|         |
|         |
|         |
|         |
|         |
|         |
|         |
+-----+

+-----+
|         |
|         |
|         |
|         |
|         |
|         |
|         |
|         |
|         |
|         |
|         |
|         |
|         |
|         |
|         |
|         |
|         |
|         |
|         |
|         |
|         |
+-----+
|         |
|         |
|         |
|         |
|         |
|         |
|         |
|         |
|         |
|         |
|         |
|         |
|         |
|         |
|         |
|         |
|         |
|         |
|         |
|         |
+-----+

StadiumVision Director Configuration Menu

Server hostname is 3VD-J
Server IP address is 10.194.172.99
-----
Please choose one of the following menu options:

a) Configure IP information
b) Configure DNS information
c) Configure NTP
d) Set Hostname
e) Edit hosts file
f) Start / Stop Services
g) Ping a host
h) Display realtime logging
i) Set StadiumVision user password
j) Change StadiumVision user passwords
k) Change MySQL password
l) Enable TAC user
m) Shutdown the StadiumVision server
n) Restart the StadiumVision server
o) Rerun StadiumVision initial configuration
p) Display system details
q) Upgrade StadiumVision server
r) Configure automatic backup and restore
x) Exit

```

- Step 4** When the system details are displayed, verify the server IP address and other system information has been properly configured.
- Step 5** Type **r** and press **Enter** to return to the TUI main menu.
- Step 6** If there are any system configuration settings that you want to change, access the appropriate TUI menu option to modify your configuration.
- Step 7** To verify connectivity to another host connected on the network, type **g** to ping a host and press **Enter**. Type the IP address of the host that you want to test and press **Enter**.

```

                +-----+
                |         |
                |         |
                |         |
                |         |
                |         |
                |         |
                |         |
                |         |
                |         |
                |         |
                |         |
                |         |
                |         |
                |         |
                |         |
                |         |
                |         |
                |         |
                |         |
                +-----+
                |         |
                |         |
                |         |
                |         |
                |         |
                |         |
                |         |
                |         |
                |         |
                |         |
                |         |
                |         |
                |         |
                |         |
                |         |
                |         |
                |         |
                |         |
                |         |
                |         |
                +-----+
                |         |
                |         |
                |         |
                |         |
                |         |
                |         |
                |         |
                |         |
                |         |
                |         |
                |         |
                |         |
                |         |
                |         |
                |         |
                |         |
                |         |
                |         |
                |         |
                |         |
                +-----+
                |         |
                |         |
                |         |
                |         |
                |         |
                |         |
                |         |
                |         |
                |         |
                |         |
                |         |
                |         |
                |         |
                |         |
                |         |
                |         |
                |         |
                |         |
                |         |
                |         |
                +-----+

+-----+
|         |
|         |
|         |
|         |
|         |
|         |
|         |
|         |
|         |
|         |
|         |
|         |
|         |
|         |
|         |
|         |
|         |
|         |
|         |
|         |
|         |
+-----+
|         |
|         |
|         |
|         |
|         |
|         |
|         |
|         |
|         |
|         |
|         |
|         |
|         |
|         |
|         |
|         |
|         |
|         |
|         |
|         |
|         |
+-----+
|         |
|         |
|         |
|         |
|         |
|         |
|         |
|         |
|         |
|         |
|         |
|         |
|         |
|         |
|         |
|         |
|         |
|         |
|         |
|         |
|         |
+-----+

+-----+
|         |
|         |
|         |
|         |
|         |
|         |
|         |
|         |
|         |
|         |
|         |
|         |
|         |
|         |
|         |
|         |
|         |
|         |
|         |
|         |
+-----+

+-----+
|         |
|         |
|         |
|         |
|         |
|         |
|         |
|         |
|         |
|         |
|         |
|         |
|         |
|         |
|         |
|         |
|         |
|         |
|         |
|         |
+-----+

StadiumVision Director Configuration Menu

Ping A Host
Enter hostname or IP address to ping or type EXIT to go back to the main menu:
172.31.113.189
Press ENTER to begin pinging. Press CTRL-C to stop.

PING 172.31.113.189 (172.31.113.189) 56(84) bytes of data:
64 bytes from 172.31.113.189: icmp_seq=1 ttl=64 time=0.026 ms
64 bytes from 172.31.113.189: icmp_seq=2 ttl=64 time=0.018 ms
64 bytes from 172.31.113.189: icmp_seq=3 ttl=64 time=0.018 ms
64 bytes from 172.31.113.189: icmp_seq=4 ttl=64 time=0.019 ms
64 bytes from 172.31.113.189: icmp_seq=5 ttl=64 time=0.018 ms
64 bytes from 172.31.113.189: icmp_seq=6 ttl=64 time=0.020 ms

--- 172.31.113.189 ping statistics ---
6 packets transmitted, 6 received, 0% packet loss, time 4999ms
rtt min/avg/max/mdev = 0.018/0.019/0.026/0.006 ms
Press any key to return to main menu.

```

- Step 8** To stop the ping, press **Ctrl-C** and then press any key to return to the TUI main menu.
- Step 9** Type **x** and press **Enter** to exit the TUI.
- Step 10** From your browser, open the Cisco StadiumVision Director software using the following secure HTTPS URL, where *x.x.x.x* is the IP address of your server:
<https://x.x.x.x>

- Step 11** At the Cisco StadiumVision Director login screen, verify that the window displays the appropriate version. Then type the default username **admin** with password **admin**, and click **Login**.



- Step 12** After you log in with the default admin credential for the first time, enter a new password when prompted to change it at the next screen.

What to Do Next

This section describes the next steps to complete your server installation, as well as some of the initial things that you can do to begin configuring your Cisco StadiumVision Director server:

- Change the default password for the admin user account.
- Be sure that you are running a minimum of version 1.4(2) of the UCS Cisco Integrated Management Interface (CIMC) firmware and version 1.4.1 of the BIOS firmware to avoid server power off problems. For more information, see the [“Upgrading the CIMC and BIOS Firmware on a Cisco StadiumVision Director Platform 2 Server”](#) module.
- Install two additional hard drives as recommended for Cisco StadiumVision Director Release 3.0 and required for the Self-Service Content feature. For more information, see the [“Installing Additional Hard Drives in the Cisco StadiumVision Director Platform 2 Server”](#) module.
- Upgrade the DMP firmware and disable failover for all DMPs. For more information, see the [“Upgrading the DMP Firmware”](#) section on page 11 and the [“Disabling Failover on all DMPs”](#) section on page 14.

For more information about DMP configuration, see the *Cisco StadiumVision Video Endpoint (DMP) Design and Implementation Guide*.

- Add additional user accounts.
- Refer to the other design, configuration, and operation guides on Cisco.com to continue setting up your Cisco StadiumVision Director server at:

http://www.cisco.com/en/US/products/ps11274/tsd_products_support_series_home.html

