



Cisco Vision Dynamic Signage Director Server Text Utility Interface

First Published: 2016-11-30

Last Updated: 2017-05-19

The Text Utility Interface (TUI) provides a console-based interface for use by system installers, administrators, and troubleshooting personnel. The TUI replaces the requirement for any low-level system command line (shell) access and can be used to perform routine system tasks such as modifying system configurations, changing passwords, and checking system logs. Remote TAC access and troubleshooting can both be facilitated from the TUI in the event of an outage or failure.

The Cisco Vision Dynamic Signage Director Director and Cisco Vision Dynamic Signage Director Remote servers both include a TUI interface. The remote server version of the TUI has a similar menu structure, but only provides a subset of the functions available in Cisco Vision Dynamic Signage Director.

Contents

- [Information About the TUI, page 103](#)
- [How to Use the TUI, page 108](#)
- [Related Documentation, page 110](#)

Information About the TUI

This section includes the following topics:

- [Overview of the TUI Menus, page 104](#)
- [Working with the TUI Interface, page 107](#)

Overview of the TUI Menus

The TUI is a nested structure of menus with options that allow you to drill down to specific system tasks to be performed on the server. The primary menus are:

- Main Menu
- System Settings
- System Accounts
- Services Control
- Cisco Vision Server Administration
- Troubleshooting

Table 1 on page 104 provides a description of the primary menus included in the Cisco Vision Dynamic Signage Director TUI.

Table 1 Description of the Primary TUI Menus

| Menu Name | Use this menu to . . . |
|------------------------------------|--|
| Main Menu | Access all other menus or exit the TUI. |
| System Settings | Change server network configuration, system date/time, or display system information. |
| System Accounts | Manage default system passwords. For more information about system accounts and modifying them, see System Accounts on the Cisco Vision Dynamic Signage Director Servers, page 67 . |
| Services Control | Access services running on the server to start, stop, or show status. |
| Cisco Vision Server Administration | Manage the operation and software configuration of the server. |
| Troubleshooting | Run a ping command, monitor disk space usage, clean up files to free up disk space, test disk speed, display system logging information, or get NTP information. |

Figure 1 on page 105 shows a map of the new Cisco Vision Dynamic Signage Director TUI menu system and options.

Information About the TUI

Figure 1 TUI Map for Cisco Vision Dynamic Signage Director Servers

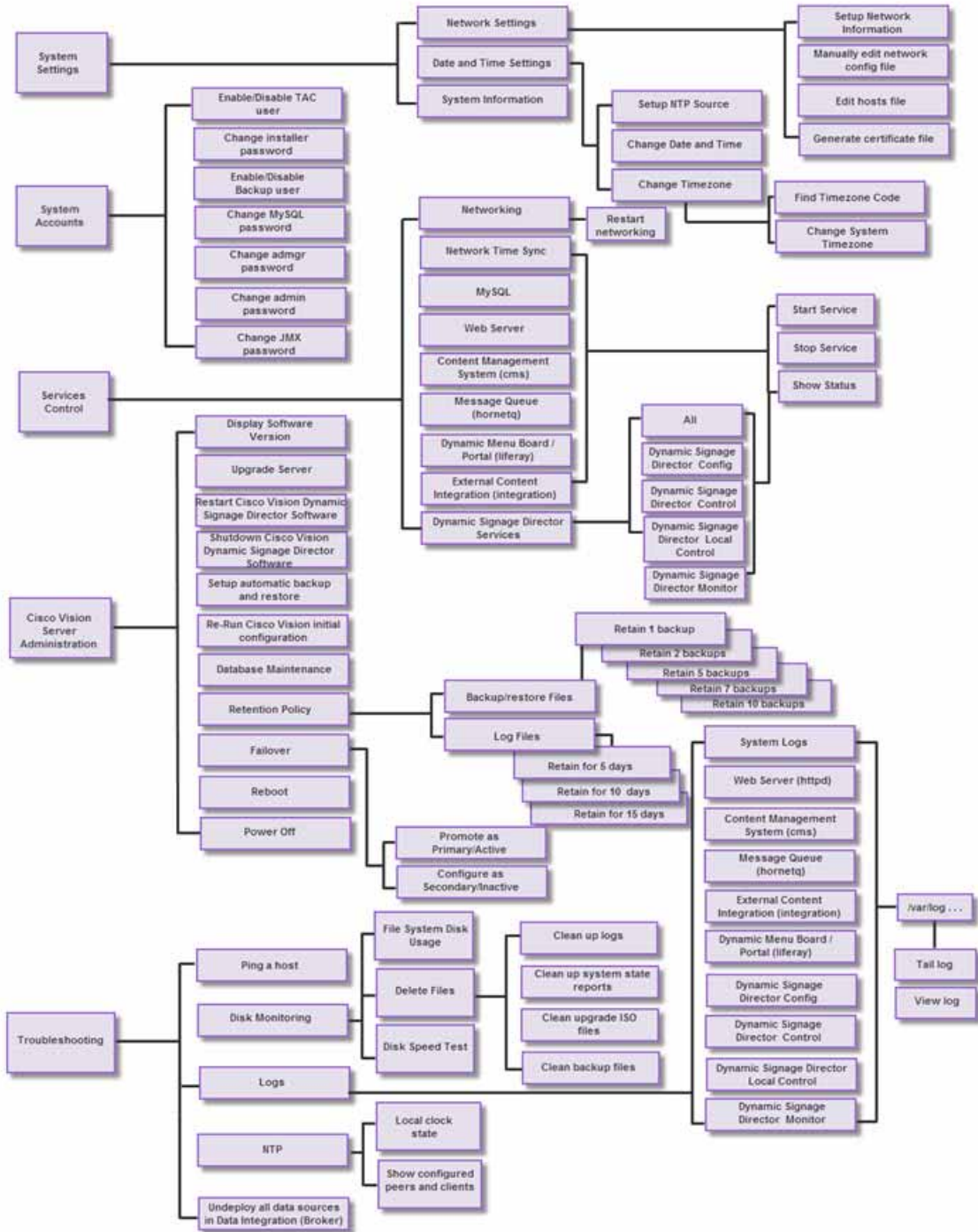
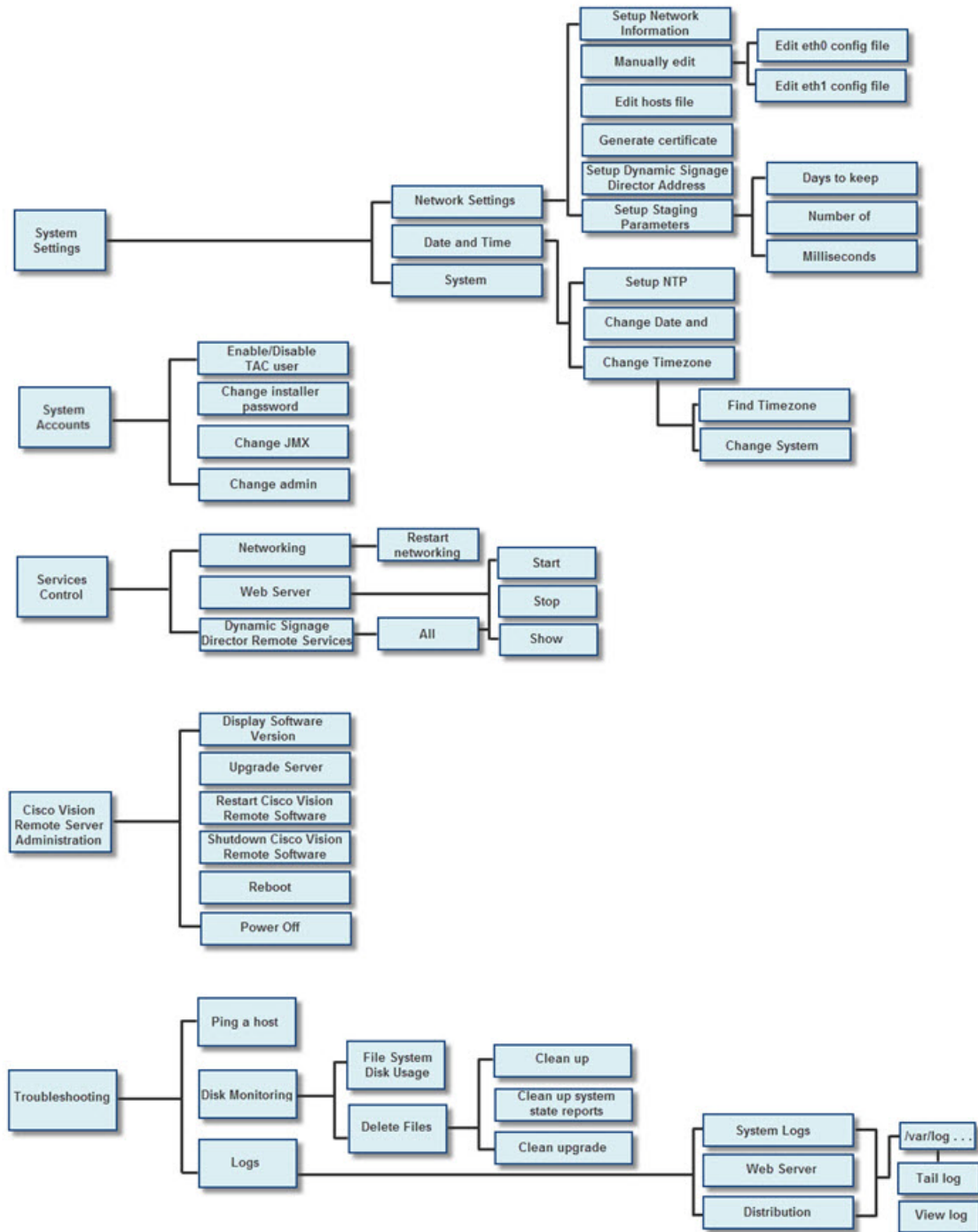


Figure 2 on page 106 shows a map of the Cisco Vision Dynamic Signage Director Remote TUI menu system and options.

Figure 2 TUI Map for Cisco Vision Dynamic Signage Director Remote Servers



Working with the TUI Interface

This section includes the following topics:

- [Menu Navigation, page 107](#)
- [File Editor, page 107](#)

Menu Navigation

The Main Menu is displayed when you log in. To navigate through the menus you must type the character that corresponds to the menu area where you want to go (**a**, **b**, **c**, and so on) and press **Enter**.

To return to other menus, you must back out of the hierarchy of menus using one of the indicated keys to return you to prior menus.

Caution: Avoid pressing Ctrl-c from the TUI. This immediately terminates the TUI session and if services were started during the session they might stop running. Use the TUI menu system to exit the interface.

File Editor

Several of the TUI options open server system files for you to modify using the Unix system vi editor. The following configuration files are editable from the TUI:

- DNS information—/etc/resolv.conf
- NTP server information—/etc/ntp.conf
- Server host information—/etc/hosts

Before modifying configuration files, you should be familiar with the simple editing techniques used within the vi editor. [Table 2 on page 107](#) describes some of the more common vi Editor commands.

Table 2 Common vi Editor Commands

| Command | Description |
|-------------------------|---|
| ZZ or :wq | Exit vi and save changes. |
| :q! | Exit vi without saving changes. |
| Esc key | Exit current mode and enter vi command mode. |
| Cursor Movement | |
| h | Move left (backspace). |
| j | Move down. |
| k | Move up. |
| l | Move right. |
| Enter key | Move to the beginning of the next line. |
| Inserting | |
| a | Append character after cursor. |
| i | Insert character before cursor. Enters INSERT mode. |
| r | Replace character under cursor with next character typed. |
| R | Keep replacing character until [Esc] is pressed. |
| Deleting | |

Table 2 Common vi Editor Commands (continued)

| Command | Description |
|------------|---|
| db | Delete word before cursor. |
| dd | Delete line under cursor. |
| dw | Delete word under cursor. |
| x | Delete character under cursor. |
| Put | |
| P | Undo deletion of characters, words, or lines before cursor. |
| p | Undo deletion of characters, words, or lines after cursor. |

How to Use the TUI

This section provides information about how to use some of the areas of the TUI interface. It includes the following topics:

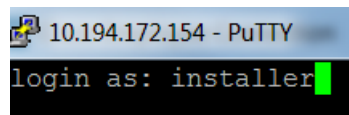
- [Logging Into the TUI, page 108](#)
- [Displaying System Information, page 109](#)
- [Exiting the TUI, page 109](#)

Logging Into the TUI

To access the TUI, you need either physical console access or an SSH client such as PuTTY.

To log into the TUI, complete the following steps:

1. Do one of the following:
 - Access the server using a directly-attached console.
 - In the SSH client software, specify the IP address of the server that you want to access.
2. When the “login as:” prompt appears, type **installer** and press **Enter** ([Figure 3 on page 108](#)):

Figure 3 TUI Login Prompt

3. At the password prompt, type the installer password and press **Enter**.

Note: In a PuTTY terminal, the keystrokes for your password entry are not shown.

When the login is successful, the Main Menu is displayed along with some basic system information at the top of the screen (Figure 4 on page 109).

Figure 4 Cisco Vision Dynamic Signage Director TUI Main Menu

```
Cisco Vision Dynamic Signage Director Configuration Menu
Hostname:      cv-director
IP address:    10.194.170.141
Software version: 5.0.0 build 320
-----
Main Menu

Please choose one of the following menu options:

a) System Settings
b) System Accounts
c) Services Control
d) Cisco Vision Server Administration
e) Troubleshooting
X) Exit
```

Note: Once logged in, you can change the installer password from the **System Accounts > Change installer password** menu option.

Displaying System Information

The **System Settings > System Information** option allows you to obtain information about the current network configuration, hosts file, DNS configuration, NTP server, system date and time, and UUID for the server.

To display system information, complete the following steps:

1. Go to the TUI Main Menu.
2. Type **a** (for System Settings) and press **Enter**.
3. From the System Settings menu, type the letter corresponding to the System Information option and press **Enter**.

The system information is displayed on your screen.

4. To return to the System Settings menu, press any key.

Exiting the TUI

Caution: Avoid pressing **Ctrl-c** from the TUI. This immediately terminates the TUI session and if services were started during the session they might stop running. Use the TUI menu system to exit the interface.

To exit the TUI, complete the following steps:

1. Go to the TUI Main Menu.

Note: If you are in a TUI submenu, you will have to type **R** or **<** or **,** and press **Enter** to navigate back to the Main Menu.

2. Type **X** and press **Enter**.

Related Documentation

The following documents provide details about using some of the specific areas of the TUI:

- [Other modules in this Cisco Vision Dynamic Signage Director Server Administration Guide.](#)
- [Cisco Vision Software Installation and Upgrade Guide: Dynamic Signage Director Release 5.0](#)