



Configuring Cisco StadiumVision Director for Multiple Venue Support

First Published: May, 2016

In Cisco StadiumVision Director Release 3.1 and later releases, a centralized server site can be deployed with multiple remote sites in a multi-venue architecture. This document is intended for Cisco StadiumVision Director administrators and describes how to enable and manage multiple venue support on Cisco StadiumVision Director Remote servers.

Contents

- [Prerequisites for Configuring Multiple Venue Support, page 57](#)
- [Restrictions for Configuring Multiple Venue Support, page 58](#)
- [Information About Configuring Multiple Venue Support, page 59](#)
- [How to Configure Multiple Venue Support, page 62](#)
- [How to Migrate Deployed Devices From a Single Venue to a Multiple Venue System, page 70](#)

Prerequisites for Configuring Multiple Venue Support

Before you configure Cisco StadiumVision Director remote servers for multiple venue support, be sure that the following requirements are met:

- You have read the [“Cisco StadiumVision Director Server Architecture” module on page 3](#).
- You understand the deployment of zones, groups and locations and the use of playlists and scripts in Cisco StadiumVision Director.
- The centralized Cisco StadiumVision Director server is installed with a minimum of Release 3.1.
- You have the following information for all installed Cisco StadiumVision Director Remote servers:
 - The names that you want to use for the remote sites.
 - The IP addresses for all installed Cisco StadiumVision Director Remote servers.

**Note**

If you do not yet have the IP addresses for the remote server sites, you can continue to add the venues to Cisco StadiumVision Director without any IP address, and go back to configure the real IP addresses later.

- If you plan to override use of global remote server credentials, then you have the password that you want to use for each remote server. This will also require reconfiguration of these credentials using the Text Utility Interface (TUI) on the Cisco StadiumVision Director remote server. For more information, see the [“Configuring Cisco StadiumVision Director Remote Servers” module on page 47](#).
- You have planned the configuration for any new or changes to existing Locations. For existing Locations be sure that you are aware of current group/zone associations that will be disabled once you reassign an existing Location to a specific venue.

Restrictions for Configuring Multiple Venue Support

Before you configure Cisco StadiumVision Director remote servers for multiple venue support, be sure that you consider the following restrictions:

- The SV-4K and DMP-2K media players have the following restrictions in a multiple venue environment:
 - There is no support for distribution of content between a Cisco StadiumVision Director Remote server and the SV-4K and DMP-2K.
 - Any remotely-located SV-4K and DMP-2K media players are controlled by the central Cisco StadiumVision Director server.
 - The PTP master for SV-4K and DMP-2K time service must be remotely located with the SV-4K and DMP-2K and on the same VLAN.
- Venue objects (such as locations, playlists, and scripts) are limited to a single-venue association, except for users who are assigned to the role of Venue Operator.

**Caution**

Once an existing Location is reassigned to a specific venue, any previous group/zone associations will be disabled and the Location will need to be reassigned to groups/zones.

- Only Venue Operators can be associated to one or more venues.
- Only certain areas of the Cisco StadiumVision Director software are *venue aware*, which means that certain roles can apply venue-specific scope of control using the venue selector. These areas include:
 - Command Center Monitoring—Administrator, Help Desk, Support, and Venue Operator
 - Control Panel > Control—Administrator, Event Operator, and Venue Operator
 - Control Panel > Content—Administrator and Content Manager
 - Control Panel > Schedule—Administrator and Content Manager
 - Management Dashboard—Administrator and Venue Operator

**Note**

The following areas of the Control Panel > Setup are not directly venue-aware using the venue selector, but objects defined there can have a venue-specific relationship:

- **Users**—You can define all Users under Control Panel > Setup, but you can only associate venues to Venue Operators under the Venues tab. Therefore, the Users interface is not venue aware.
 - **Zones & Groups**—Zones and groups inherit their venue association through the Location. Locations are associated to venues under the Venues tab by the administrator.
 - **Triggers**—Triggers can be applied to venue-associated scripts, but the Triggers interface itself is not venue aware, and all defined triggers in Cisco StadiumVision Director are global in scope.
-
- Playlists imported using the Media Planner Import API need to be manually assigned to venues after import into Cisco StadiumVision Director.
 - Cisco StadiumVision Director does not support disabling of multiple venue support (set the “Multiple Venue Enabled?” property to false) after you have enabled it and associated objects.

Information About Configuring Multiple Venue Support

This section includes the following topics:

- [Cisco StadiumVision Director Remote Servers, page 59](#)
- [Role-Based Access Control for Hierarchical Management of Multiple Venues, page 60](#)
- [Understanding Venue Association, page 61](#)
- [Understanding Scripts and Staging Behavior in a Multi-Venue Environment, page 61](#)

Cisco StadiumVision Director Remote Servers

Cisco StadiumVision Director Remote Servers are installed at remote sites to provide a way of transferring venue-specific content in a distributed Cisco StadiumVision Director network environment, where primary management and control is performed on a centralized Cisco StadiumVision Director server.

The benefits of deploying remote servers include faster script staging due to WAN optimization, as well as multicast optimization which reduces the number of messages that remote DMPs receive.

The Cisco StadiumVision Director Remote servers support a limited set of administrative functions using a text utility interface (TUI) similar to the TUI support on Cisco StadiumVision Director. The remote servers are connected by a wide-area network (WAN) to the central Cisco StadiumVision Director server. The remote server connection to the central Cisco StadiumVision Director server is configured using the IP addresses of the servers. The IP address configuration must be completed on both the Cisco StadiumVision Director server, and on the Cisco StadiumVision Director Remote server using the remote server TUI.

The transmission of data is optimized over the WAN because the central Cisco StadiumVision Director server sends content only to the Cisco StadiumVision Director Remote server, rather than sending multiple transmissions to each remote DMP for that server. The remote server sends that content to each of the DMPs that it is configured to support on the local network.

For more information, see the [“Cisco StadiumVision Director Server Architecture” module on page 3](#).

Role-Based Access Control for Hierarchical Management of Multiple Venues

Cisco StadiumVision Director Release 3.1 introduces a new role of Venue Operator and adds new configuration management features to the Administrator role. All other legacy roles in Cisco StadiumVision Director retain their existing functionality.

For more information about user management and Role-Based Access Control (RBAC), see the [“User Management in Cisco StadiumVision Director” module on page 81](#).

Administrator

The Cisco StadiumVision Director administrator can perform all functions related to Cisco StadiumVision Director Remote server configuration and venue management.

Most of the configuration management for multiple venue support resides only with the Cisco StadiumVision Director administrator role, which includes the addition of the following functions:

- Enabling Cisco StadiumVision Director for multiple venue support.
- Creating venues in Cisco StadiumVision Director.
- Creating users with role of Venue Operator.
- Capability for associating any venues to users, locations, content, playlists, and scripts.

Content Manager

In a multi-venue architecture a Content Manager can perform all of the same functions as within a standard Cisco StadiumVision Director environment, with the addition of the following capabilities:

- Selecting the venue scope from the Content and Schedule screens in Control Panel.
- Importing content to be associated with one or more venues by using venue tags.
- Creating playlists and scripts to be associated with the currently selected venue scope or all venues.



Note

Content Managers can only create new objects with venue assignment based on the currently selected venue in the venue selector. To reassign an object to a different venue, the Content Manager must remove the object and add again.

Venue Operator

The Venue Operator is a new role introduced in Cisco StadiumVision Director Release 3.1 that is based on a subset of Event Operator and Help Desk roles, with the added functionality of venue-specific scope of control. The Venue Operator role supports the following capabilities:

- Changing the user password in Control Panel.
- Selecting venue scope for the venues for which permissions are granted.
- Viewing and monitoring information on the Management Dashboard with read-only access to the venues for which permissions are granted.
- Executing scripts and related state functions during an event at the venues for which permissions are granted.
- Running CCM.

Other Legacy RBAC Roles

Legacy RBAC roles (roles that were available in releases prior to Cisco StadiumVision Director Release 3.1) can perform all of the same functions as within earlier Cisco StadiumVision Director software releases.

**Note**

In a multi-venue architecture an Event Operator can perform all of the same functions as within a standard Cisco StadiumVision Director environment. The Event Operator role is not venue aware. To support venue-specific scope of control for scripts, use the new Venue Operator role.

Understanding Venue Association

A centralized Cisco StadiumVision Director site with multiple remote sites (venues) supports the following functionality:

- Association of venues to Users, Locations, Playlists, and Scripts (referred to collectively as *venue objects*).
- Inheritance of venue association from Locations for Groups, Zones, and Luxury Suites.

**Tip**

You can use the Bulk Administration Tool (BAT) to associate multiple locations to a venue.

Understanding Scripts and Staging Behavior in a Multi-Venue Environment

This section provides information about scripts that you should be aware of when implementing them in a multi-venue environment.

Script Best Practices

When configuring scripts in a multi-venue environment, consider the following best practices:

- Deploy remote servers to achieve faster script staging due to WAN optimization.
- Configure scripts to control only a single venue.
- When creating venue-specific scripts, use the following process:
 1. Create the script first without any actions—Name it and save it.
 2. Assign the script to the venue.
 3. Edit the script to assign it to zones/groups.
 4. Use playlists that belong to the same venue.
 5. Edit the script to further define states.
- Be sure that scripts that are intended to run at a remote site are not also being run on any non-site DMPs.

- For optimal operation, avoid running multiple event scripts to the same DMPs at a site.

**Note**

If you move a script assignment from one venue to another, be aware that the zones/groups/playlists might still be associated with the old venue until they are manually reassigned. If a script is part of one venue and zones/groups/playlists are part of another venue, then the script will not start.

Script Staging Behavior

In Cisco StadiumVision Director, script staging is always serialized. For example, if a manual staging job is running, a script-initiated staging job will begin after the manual staging has completed. In the case of two venues where each is deployed with a different remote server, then when scripts are staged for each venue, one venue's script will be staged before the other. The scripts will not start at the same time.

In the case of content replacement, content staging happens right away. If current staging is going on, content replacement staging will go into the queue. The DMP will play old content until confirmation of successful staging occurs, so there could be some time delay.

How to Configure Multiple Venue Support

This section includes the following tasks:

- [Enabling Multiple Venue Support in Cisco StadiumVision Director, page 62](#) (required)
- [Adding Venues to Cisco StadiumVision Director, page 63](#) (required)
- [Associating Venues with Cisco StadiumVision Director Objects, page 65](#) (required)
- [Removing Venues From Cisco StadiumVision Director, page 68](#) (optional)
- [Selecting Venue Scope, page 68](#) (optional)
- [Monitoring Venues From the Management Dashboard, page 69](#) (optional)

Enabling Multiple Venue Support in Cisco StadiumVision Director

By default, Cisco StadiumVision Director is not configured for multi-venue deployment. To support Cisco StadiumVision Director with a centralized server and remote sites, you must configure the Multiple Venue Configuration property, which will set the corresponding registry key. Once this registry key is set, it will be preserved during an upgrade.

**Caution**

Cisco StadiumVision Director does not support disabling of multiple venue support (set the "Multiple Venue Enabled?" property to false) after you have previously enabled it and associated objects. In other words, do not toggle between enabling multiple venue support and disabling it.

To enable multiple venue support in Cisco StadiumVision Director, complete the following tasks:

- Step 1** Log into Cisco StadiumVision Director as an administrator.
- Step 2** From the main menu, click **Management Dashboard**.
- Step 3** Go to **SV Director Configuration > Multiple Venue Configuration**.

- Step 4** Set the **Multiple Venue Enabled?** property value to “**true**.”
- Step 5** Click the Refresh icon to update property values.
The multiple venue management functions are enabled in Cisco StadiumVision Director and the registry key named “**multiVenueDeployment**.”
- Step 6** Click **Save**.
- Step 7** Confirm that the “**Choose venue:**” control appears in the upper right corner of the Management Dashboard window.



- Step 8** Go to **Control Panel > Setup** and confirm that the Venues tab is available.



Tip If you already had the Control Panel open before enabling multiple venue support, refresh the browser to display the Venues tab.

Adding Venues to Cisco StadiumVision Director

After you enable multiple venue support in Cisco StadiumVision Director, you can add remote sites as venues in the Control Panel.

To add venues in Cisco StadiumVision Director, complete the following tasks:

- Step 1** Log into Cisco StadiumVision Director as an administrator.
- Step 2** From the main menu, click **Control Panel**.
- Step 3** Go to **Setup > Venues**.

Step 4 Click the plus (+) icon.

The Intro panel displays the remote server configuration options (Figure 1).

Figure 1 *New Venue Intro Panel*

Step 5 (Required) In the Name box, type a unique and identifiable name for the venue. “new venue” is the default.

Step 6 (Required) In the Time zone box, click the arrow to open the drop-down box and select the time zone for the remote site.



Note This option is informational only and for proof-of-play reporting. The actual time zone for the venue is configured from the TUI on the remote server. For more information, see the [“Restrictions for Configuring Multiple Venue Support” section on page 58.](#)

Step 7 (Required only when remote servers are deployed) In the IP address box, type the IPv4 address of the Cisco StadiumVision Director Remote server.



Caution

If you do not know the IP address of the remote server, do not type an invalid IP address as a placeholder for the real IP address due to certain backend processes that are started once an IP address is entered and that can interfere with normal operation. Simply leave the IP address box empty until you can confirm the valid IP address.

Step 8 (Optional) To specify a unique password for the remote server to enable monitoring from the Management Dashboard, type a Password.



Tip When global credentials are configured, this field is automatically populated with the global password that is configured in the Cisco StadiumVision Director Management Dashboard. Before you modify this password, be sure that you understand the use and requirements for this password. For more information, see the [“Configuring Connectivity to the Cisco StadiumVision Director Server” section on page 49.](#)

Associating Venues with Cisco StadiumVision Director Objects

You can associate venues with Locations, Playlists, Scripts, and Users in Cisco StadiumVision Director. Only the administrator can perform associations for all of these objects for all venues using the Venues tab in the Control Panel Setup screen.

After the initial multiple venue configuration and association is completed by the Cisco StadiumVision Director administrator, other roles (Content Manager and Venue Operator) can use the venue selector in Cisco StadiumVision Director for their authorized functional areas of the interface to select their venue scope of control. Any related tasks will be based on that selected venue scope (All Venues or a specific venue).

This section includes the following topics:

- [Guidelines for Associating Venues, page 65](#)
- [Venue Association Procedure, page 65](#)
- [Troubleshooting Venue Association Conflicts, page 66](#)

Guidelines for Associating Venues

Before you associate venues in Cisco StadiumVision Director, be sure that you understand the following guidelines:

- Each object is limited to a single-venue association, except for users.
- Only users with the assigned role of Venue Operator can be assigned to one or more venues by the administrator.
- Only the following roles can see the venue selector in the Cisco StadiumVision Director interface and use it to select the venue scope of control for their authorized areas:
 - Administrator
 - Content Manager
 - Event Operator
 - Venue Operator



Note SSC users and the SSC portal are not venue aware. There is no venue selector available in SSC.



Caution

If a location is already in a group/zone configuration, it will be forcibly removed from those groups and zones when you either associate or disassociate the location from a venue. Scripts might fail to start on those endpoints because they are not part of the group anymore.

- Refer to the [“Script Best Practices” section on page 61](#) for guidelines on script creation and association.

Venue Association Procedure

To associate venues with Cisco StadiumVision Director objects, complete the following steps:

- Step 1** Log into Cisco StadiumVision Director as an administrator.

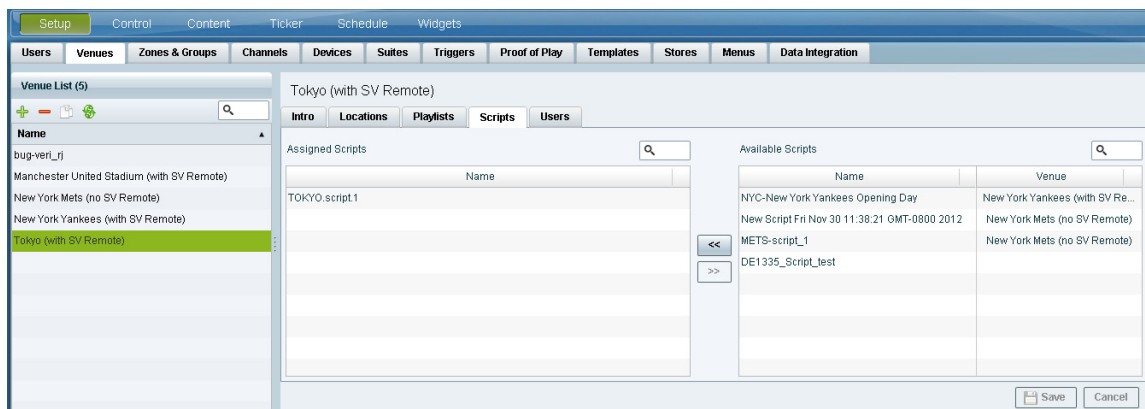
- Step 2** From the main menu, click **Control Panel**.
- Step 3** Go to **Setup > Venues**.
- Step 4** In the Venue list, click the name of the venue that you want to associate.
- Step 5** Do the following to assign object types to the selected venue:
- Click **Locations, Playlists, Scripts, or Users**.
 - In the “Available” box, select the name of the location, playlist, script, or user that you want to associate.



Tip You can multi-select objects. Click the checkbox and Ctrl+Click to select additional objects. In releases prior to Release 3.1 SP1, multi-selection was limited to Locations objects only.

- Click the << button.
The object name is added to the Assigned box.
- Repeat from Step a. or Step b. for as many objects as you need to associate.

Figure 2 Associate Scripts to Venue Example



- Step 6** (Optional) To remove an assigned object, select the name of the object in the “Assigned” box and click the >> button.
- Step 7** When associations are complete, click **Save**.

Troubleshooting Venue Association Conflicts

When you attempt to associate objects to venues, certain conditions can cause the system to provide you with a warning about objects that are not optimally configured to be associated to the venue, such as a Location already being associated to a group or zone in another venue. The warning message identifies the objects, which allows you to do one of two things:

- Click **Close** to go back to the Cisco StadiumVision Director configuration to confirm that the object best follows venue association guidelines and note or change the configuration.
- Click **Force** to permit the system to attempt to make the requested association for the objects in conflict.

**Note**

The Force button might not work for all associations. It is important to understand that an attempt is made by the system to force the specified user action but several factors influence its success. For best results, read the error message and see what objects are identified as being in conflict with the requested action and take corrective steps to avoid the conflict within Cisco StadiumVision Director.

Figure 3 shows an example of an error message that can appear when you attempt to associate venue objects and there are conflicts within the Cisco StadiumVision Director configuration. Any other objects not in conflict will be associated to the venue as requested.

Figure 3 Venue Association Conflict Message Example

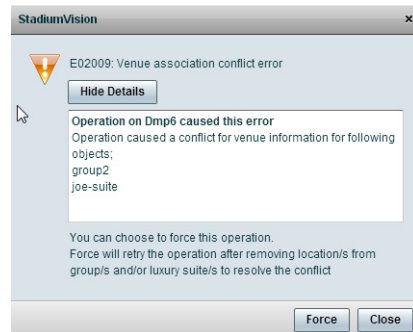
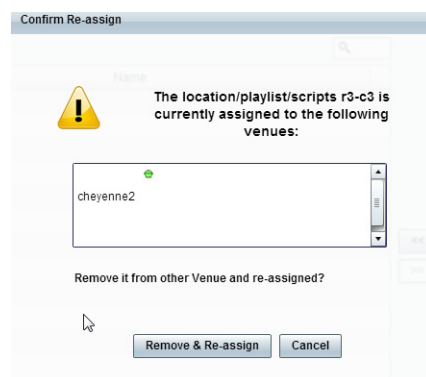


Figure 4 shows an example of a venue assignment conflict message where the location, playlist, or script that you tried to assign to a venue is identified as already assigned to another venue. The original venue assignment is displayed in the message (“Cheyenne2” in this example). You can do one of two things:

- Click **Remove & Re-assign** to proceed with the new venue assignment and remove the specified object from its current venue assignment.
- Click **Cancel** to retain the original venue assignment and return to Cisco StadiumVision Director.

Figure 4 Confirm Object Reassignment Message Example



Removing Venues From Cisco StadiumVision Director

To remove a venue from Cisco StadiumVision Director, complete the following steps:

- Step 1** Log into Cisco StadiumVision Director as an administrator.
- Step 2** From the main menu, click **Control Panel**.
- Step 3** Go to **Setup > Venues**.
- Step 4** Dissociate all objects that are linked to the venue that you want to remove.
- Step 5** In the Venue List box, select the venue that you want to remove.
- Step 6** Click the delete icon (red dash).

Selecting Venue Scope

You can select venue scope in the Control Panel and in the Management Dashboard. However only certain areas of the Control Panel interface are venue aware. Once you have enabled the software for multiple venue support and added new venues in the Control Panel, you can use the venue selector in those areas that are venue aware.

Venue status is indicated in the venue selector using a radio button that is colored red to indicate that the venue is disabled and green to show that the venue is online.



Caution

Take note that the venue selector will show the last venue that you selected, but the scope will not be limited to the selected venue if you are not in a venue-aware area of the interface. The global scope will apply (All Venues). For more information, see the [“Understanding Venue Association” section on page 61](#).

To select venue scope, complete the following tasks:

- Step 1** Log into Cisco StadiumVision Director as an administrator, content manager, or venue operator.
- Step 2** Go to the Control Panel (or Management Dashboard, as allowed by your role).
- Step 3** At the top of the window, look for the venue selector drop-down box.

[Figure 5](#) shows an example of the venue selector in the Cisco StadiumVision Control Panel.

Figure 5 Venue Selector Drop-Down Box in the Control Panel



- Step 4** Do one of the following:
 - To apply the scope of operation to a specific venue, select the name of the venue in the drop-down box.

- To apply the scope of operation to all venues, select All Venues.

Step 5 Continue to the Control Panel area that you want to configure.

Monitoring Venues From the Management Dashboard

You can monitor the status of remote devices for selected venues from the Management Dashboard.

The red, green, or gray LED to the left of venue names in the venue selector represents the status of the Cisco StadiumVision Director remote server, but not whether the DMPs in the venue are accessible.

You also can see if there are connection issues for the Cisco StadiumVision Director remote server **Monitor and Status > Services** area of the Management Dashboard.

Traffic monitoring of remote DMPs in the Management Dashboard is performed using unicast messaging, so multicast optimization does not apply nor interfere with the multicast optimization for the Cisco StadiumVision Director Remote server processing.

To monitor venues from the Management Dashboard, complete the following steps:

- Step 1** Log into the Cisco StadiumVision Director server as an administrator.
- Step 2** Go to the Management Dashboard.
- Step 3** At the top of the window, select the venue whose devices you want to monitor.
- Step 4** Click **Monitor and Status**.
- Step 5** Select the area that you want to get information about. Go to **Services** to see the status of the Cisco StadiumVision Director remote server connection.

Figure 6 shows information about zones in the Tokyo venue.

Figure 6 Monitoring Devices for a Specific Venue in the Management Dashboard

The screenshot displays the Cisco StadiumVision Management Dashboard interface. The main window is titled "Cisco StadiumVision Management Dashboard" and shows the "Monitor and Status" section for the "Tokyo" venue. The "Device List" table is visible, listing three devices with their locations, IP addresses, MAC addresses, models, and firmware versions. The table data is as follows:

Location	IP Address	MAC Address	Model	Firmware	Checked At
Off Rov_R-Cart2_C3R4	10.194.171.151	00:0f:44:01:5c:b5	DMP-4310	5.4	02/19/13 03:33:03 Af
Off Rov_R-Cart2_C1R4	10.194.171.154	00:0f:44:01:5d:a8	DMP-4310	5.4	02/19/13 03:33:03 Af
Off Rov_R-Cart2_C2R4	10.194.171.152	00:0f:44:01:5e:b1	DMP-4310	5.4	02/19/13 03:33:03 Af

The dashboard also includes a "DMP Summary" section on the right, showing a traffic light indicator and a "Service Alerts" section with a list of alerts, including "SVDOR for Manchester United Stadium (with SV Remote)" and "Cisco POS Server 3".

How to Migrate Deployed Devices From a Single Venue to a Multiple Venue System

This section describes the best practices for migrating a large number of deployed devices and locations from a single venue to a multiple venue system using the Bulk Administration Tool (BAT).

For more information about the tasks referenced here for exporting, editing, and importing TSV files using BAT, see the *Cisco StadiumVision Director Bulk Administration Tool* guide.

This section includes the following tasks:

- [Prerequisites, page 70](#) (required)
- [Exporting a Device List for the Original System Configuration, page 71](#) (required)
- [Creating New Venues, page 72](#) (required)
- [Removing All Locations From Existing Groups, page 72](#) (required)
- [Removing Locations From Existing Suites, page 72](#) (only required if DMPs are in suites)
- [Associating Initial Locations to Venues, page 73](#) (required)
- [Completing Venue-Specific Information and Association of Locations Using BAT, page 73](#) (required)
- [Populating Group Information in the New Device List, page 74](#) (required)

Prerequisites

Before you migrate deployed devices from Cisco StadiumVision Director, be sure that the following requirements are met:



Caution

Cisco StadiumVision Director does not support disabling of multiple venue support (set the “Multiple Venue Enabled?” property to false) after you have previously enabled it and associated objects. In other words, do not toggle between enabling multiple venue support and disabling it.

- You must be sure that the following object types are configured to be unique per venue: Groups, zones, locations, scripts, suites, and playlists.
- A recommended best practice is to use a naming convention that easily identifies the venue to which an object is associated by assigning a prefix to the object name. This can make it easier to find and track related objects.

For example, to name scripts, playlists, and locations that belong to a venue called “WEST-SIDE-VENUE” you could use the prefix “WE” such as WE-Script1, WE-Script2, WE-Playlist1, WE-Location1, and so on.

- If you have existing DMPs in a group that are targeted to be in multiple venues, they need to be split up so that each group contains DMPs *only for a single venue*.

For example, if there is a group (ALL-DMPs) that consists of all of the DMPs in Cisco StadiumVision Director, then the group needs to be sub-divided into smaller groups of DMPs by venue, such as “ALL-DMPs-Venue1,” “All-DMPs-Venue2,” “ALL-DMPs-No-Venue” and so on.

This same rule applies to other objects like zones, scripts, suites, and locations. If any of these have objects that are targeted to be in different venues or to be global (that is, objects that are not part of any venues) then they need to be sub-divided on a per-venue basis.

- (For DMPs in suites only) All suites must have a suite controller attached.

**Tip**

You can easily verify whether or not a controller is defined for a suite by looking at the original exported device list (See [“Exporting a Device List for the Original System Configuration” section on page 71.](#)) If Column N (Suite Name) has a value and Column M (Suite Control Type) does not have a corresponding value in the same row, then you know that the Suite named in Column N does not have a device list attached to it.

If a suite controller is not attached, then you must assign a suite controller to it. If there are not any available suite controllers, you can create an artificial one and assign it to the suite. These fake controllers can be deleted after the migration process has completed successfully:

1. Go to **Control Panel > Setup > Devices > IP Phones.**
2. Create artificial IP phone entries with fake, non-pingable IP addresses.
3. Go to **Suites.**
4. Select the suite that does not have a suite controller.
5. Click the **Phone & Remote** tab on the right panel that has suite properties.
6. Assign the artificial IP phone that you created to the suite by selecting the checkbox.

Exporting a Device List for the Original System Configuration

This task should be done to preserve initial single venue system configuration information and to aid re-population of that information to the new multi-venue device list created later.

For more information, see the “Exporting and Downloading a TSV File for Locations and DMPs” topic in the [Cisco StadiumVision Director Bulk Administration Tool](#) guide.

To export a device list for the original system configuration, complete the following steps:

-
- Step 1** Go to **Control Panel > Setup > Devices > Locations & DMPs.**
- Step 2** Click **Export.**
- Step 3** When the Export box displays, click **Download.**
- Step 4** When the “Select location for download” window appears, type the name of the .txt file that you want to save, or accept the default name and click **Save.**
- Step 5** **Be sure to save a master copy** of the originally exported device list.
-

Creating New Venues

This task describes how to create a new venue with basic information, which will be further updated in a later task using BAT.

To create new venues, complete the following steps:

-
- Step 1** Go to **Control Panel > Setup > Venues**.
 - Step 2** Specify the Name and Timezone for the venue.
 - Step 3** Click **Save**.
-

Removing All Locations From Existing Groups



Note

Before you remove locations from existing groups, be sure that you have completed the requirements in the Prerequisites section to place all objects in unique groups per venue.

Before associating Locations to the new venues, you need to remove them from existing groups.

To remove all Locations from Groups, complete the following steps:

-
- Step 1** Go to **Control Panel > Setup > Zones & Groups > Location<->Group**.
 - Step 2** Click **Groups**.
 - Step 3** Select an individual group.
 - Step 4** In the Locations panel on the right, select all Locations for the selected group.



Tip

You can use Ctrl+Click or Shift+Click key sequences to multi-select the Locations.

-
- Step 5** Click **Remove From Groups**.
 - Step 6** Repeat from [Step 3](#) for all groups that need locations removed.
 - Step 7** Refresh the browser to reload the UI so that the changes are updated.
-

Removing Locations From Existing Suites

To associate locations to a venue, they need to be removed from any existing suites. These locations will be added back to the configuration using the BAT tool using the original Device list that was exported.

To remove Locations from existing suites, complete the following steps:

-
- Step 1** Go to **Control Panel > Setup > Suites**.

- Step 2** Select any suites that contain locations that are targeted to be moved to venues.
- Step 3** Select each location and click the red '-' button on the top to delete it from the suite.



Tip Click the red '-' button rapidly to delete DMPs quickly from the suite.

- Step 4** After all DMPs are removed from the suite, be sure to click **Save**.
- Step 5** Repeat from [Step 2](#) for each suite from which you need to remove locations.

Associating Initial Locations to Venues


To establish the venue-specific fields when you export the new multi-venue device list, you need to associate at least one Location to each new venue that you created.

For more information, see the [Associating Venues with Cisco StadiumVision Director Objects, page 65](#).

Completing Venue-Specific Information and Association of Locations Using BAT

This task is performed to more easily complete configuration of any remaining venue-specific information and association of locations using BAT.

To complete venue-specific information and association of Locations, complete the following steps:

- Step 1** Export a new device list.
- After the association of at least one Location per venue, the newly exported device list file now contains the venue-specific field entries that can now be more easily populated with the remaining required configuration information.
- The venue-specific field entries in the BAT file are:
- Venue Name
 - Venue Timezone
 - Venue Remote Server IP
 - Venue JMX Password—The JMX password is saved in the venue information only when the system is disabled for global credentials.
-  **Note** The Venue JMX Username field is always ignored.
- Step 2** To complete association of Locations to venues, edit the TSV file using a spreadsheet application such as Microsoft Excel to:
- Complete the venue-specific information.
 - Copy (or auto-fill) to add rows for new Locations that you want to add to the venues.
- Step 3** Import the device list.

For more information, see the “Importing a TSV File” topic in the *Cisco StadiumVision Director Bulk Administration Tool* guide.

- Step 4** Go to **Control Panel > Setup > Venues** and confirm that the Locations are properly associated to their venues.
-

Populating Group Information in the New Device List

This step allows you to more easily re-populate the original system’s Group information to the new multi-venue device list.

To populate Group and other information from the original device list, complete the following steps:

- Step 1** Export a new device list and open the file in your spreadsheet application.
- Step 2** Excluding the first row, select all rows and columns.
- Step 3** Sort the spreadsheet by the Name field (column E).
- Step 4** Obtain the copy of the master device list that you exported in in [Step 1](#). Also sort the master spreadsheet by the Name field.
- Step 5** From the original master file, copy the columns that have Group information (Z, AA, AB, AC, and so on) and paste them appropriately into your new device list.



Tip When working with certain rows and columns in Microsoft Excel, the hide/unhide columns or rows feature and freeze/unfreeze feature can be used to efficiently do this job. For information about these features, see the Microsoft support site.

- Step 6** From the original master file, also copy columns that have Suites and Suite Controller information (J–Y).
- Step 7** Save the new device list.
- Step 8** Import the new device list into Cisco StadiumVision Director.
- Step 9** After the import is complete, refresh the browser.
-