

What is the NT Event Viewer?

Document ID: 20515

Contents

Introduction

Prerequisites

- Requirements

- Components Used

- Conventions

Windows NT Event Viewer

Related Information

Introduction

The Microsoft Windows NT Event Viewer is part of the Windows NT Operating System. The Event Viewer allows you to monitor and manage system, security, and application events and errors on your system. The Windows NT Event Viewer is a repository for critical events such as a full power failure or not so critical events, such as an incorrect password entered when you attempt to log in.

Prerequisites

Requirements

There are no specific requirements for this document.

Components Used

This document is not restricted to specific software and hardware versions.

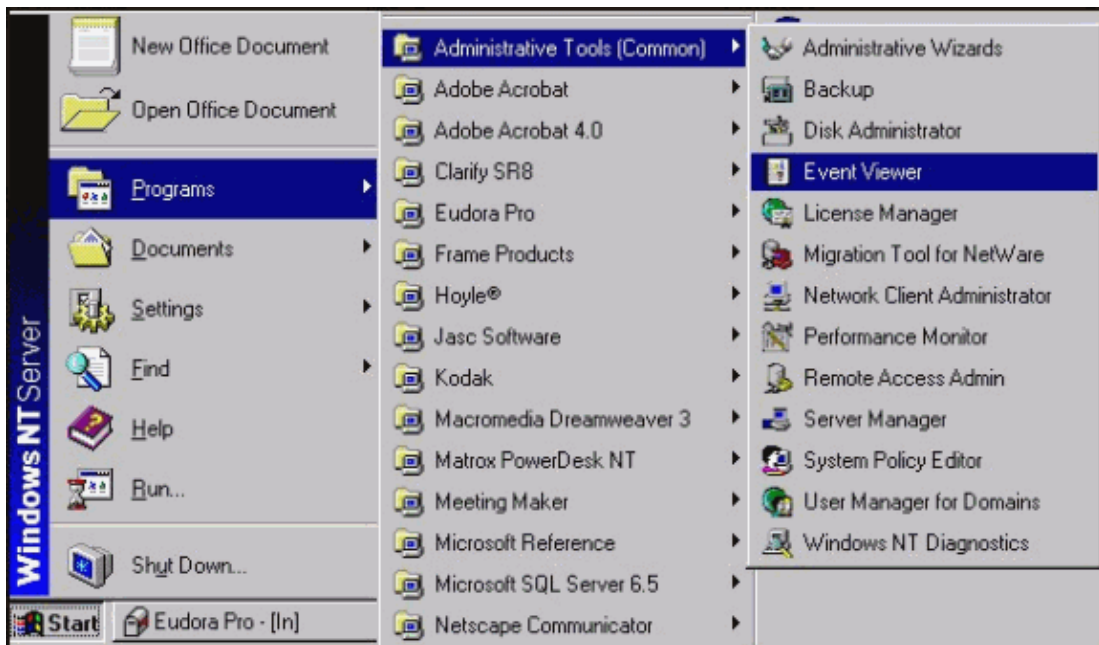
Conventions

For more information on document conventions, see the Cisco Technical Tips Conventions.

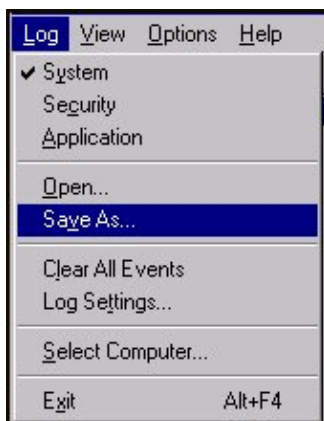
Windows NT Event Viewer

To open the Microsoft Windows NT Event Viewer complete these steps:

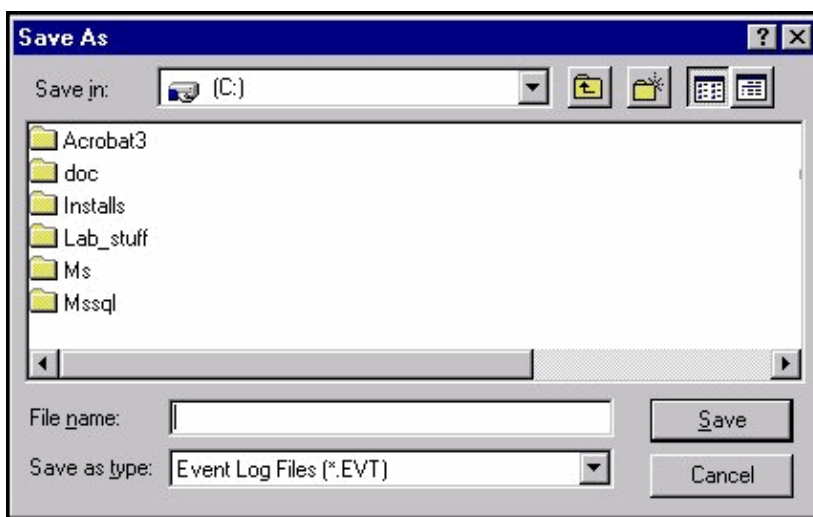
1. From the Desktop, click **Start > Programs > Administrative Tools > Event Viewer**.



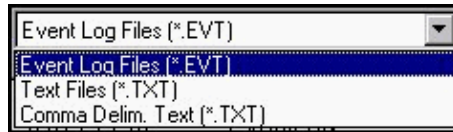
2. To save event logs when you are in the Event Viewer, select **Log > Save As**.



The Save As Dialog box displays.

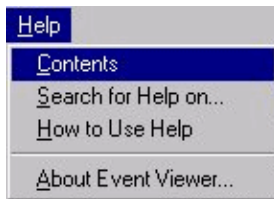


- ◆ **File Name:** specifies the file name for the Save File.
- ◆ **Save As Type:** specifies the file format to save the log information.



- ◇ Event Log Files (*.EVT) – creates an Event Log File. This file can be opened at a later time on any Microsoft Windows NT Workstation using Event Viewer.
 - ◇ Text Files (*.TXT) – creates a text file that can be opened in another application such as Notepad.
 - ◇ Comma Delim. Text (*.TXT) – if you plan to use the information in another application such as a spreadsheet.
- ◆ **Save in:** click the down arrow to list available folders on your computer. To open a folder, click the folder name.
3. The event-log service starts automatically when you run Windows NT. You can stop the event log with the Services tool in Control Panel.

Refer to Microsoft Windows NT Event Viewer Help for additional information (from the Menu bar, click **Help > Contents**).



Related Information

- [Technical Support – Cisco Systems](#)

[Contacts & Feedback](#) | [Help](#) | [Site Map](#)

© 2014 – 2015 Cisco Systems, Inc. All rights reserved. [Terms & Conditions](#) | [Privacy Statement](#) | [Cookie Policy](#) | [Trademarks of Cisco Systems, Inc.](#)

Updated: Dec 07, 2005

Document ID: 20515
