

Add MacBook Asset via SSH for Cisco Energywise Management

Contents

[Introduction](#)

[Prerequisites](#)

[Requirements](#)

[Components Used](#)

[Configure SSH on MacBook](#)

[Add SSH Asset Connector on CEM](#)

[Verify](#)

[Troubleshoot](#)

[Common Issue Logs](#)

[How to Fix](#)

Introduction

This document describes how to add a MacBook host asset in Cisco Energywise Management (CEM) via Secure Shell (SSH).

Some assets such as Apple MacBook devices retrieve information via SSH. The application uses the Uniform Resource Identifier (URI) and the credentials configured in the assets to access the system via SSH. The global options apply to all assets.

Prerequisites

Requirements

Cisco recommends that you have CEM server and controller up and running.

Components Used

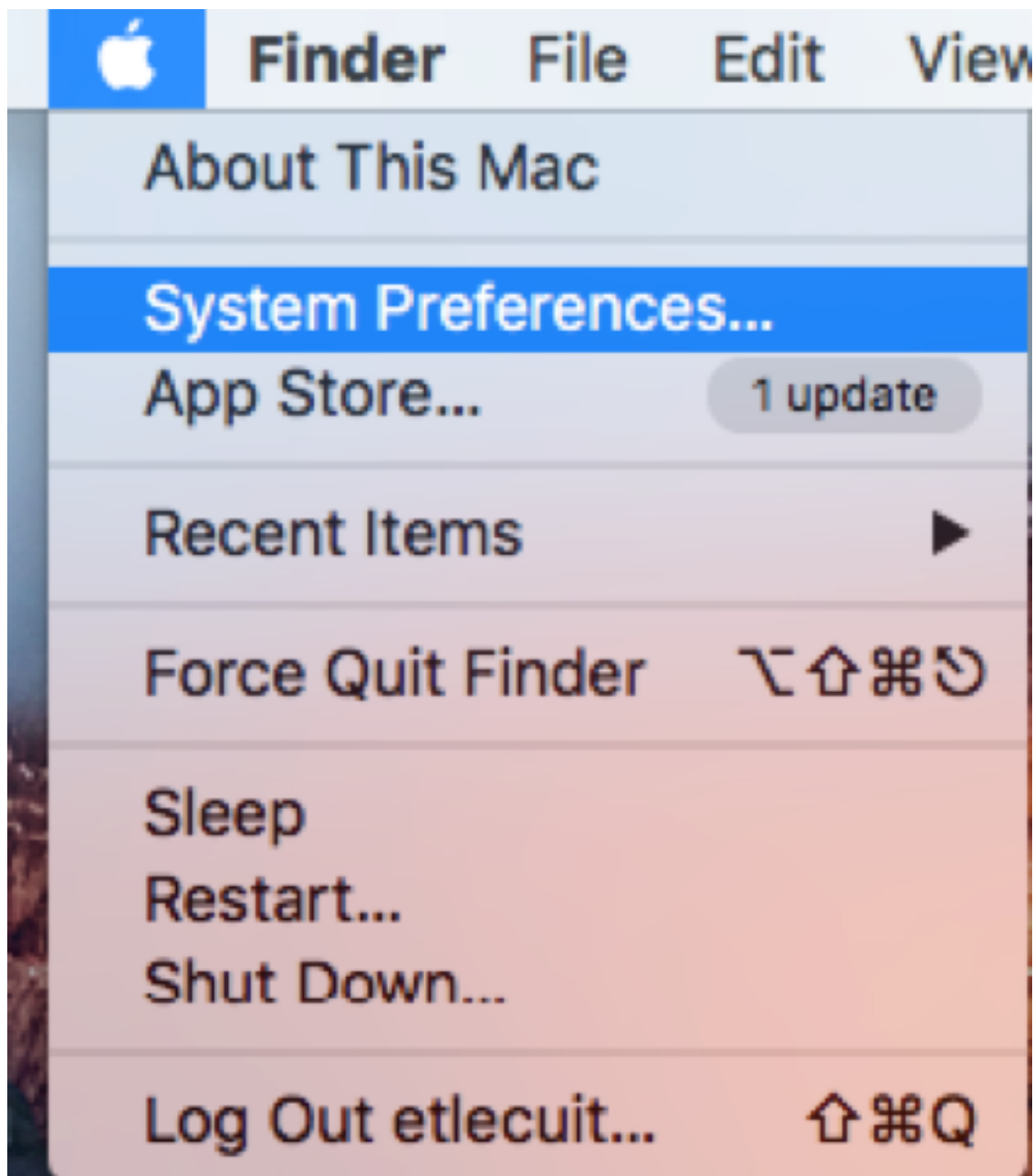
The information in this document is based on these software and hardware versions:

- MacBook hardware
- CEM Server

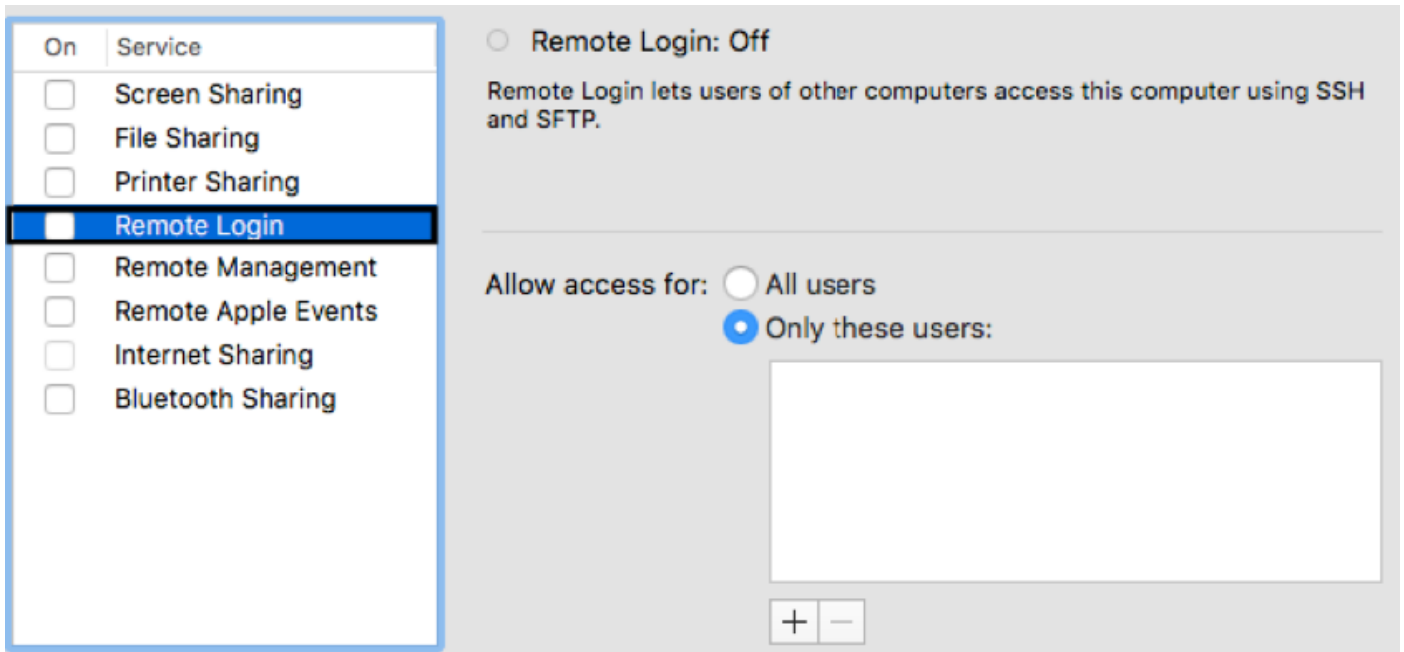
The information in this document was created from the devices in a specific lab environment. All of the devices used in this document started with a cleared (default) configuration. If your network is live, make sure that you understand the potential impact of any command.

Configure SSH on MacBook

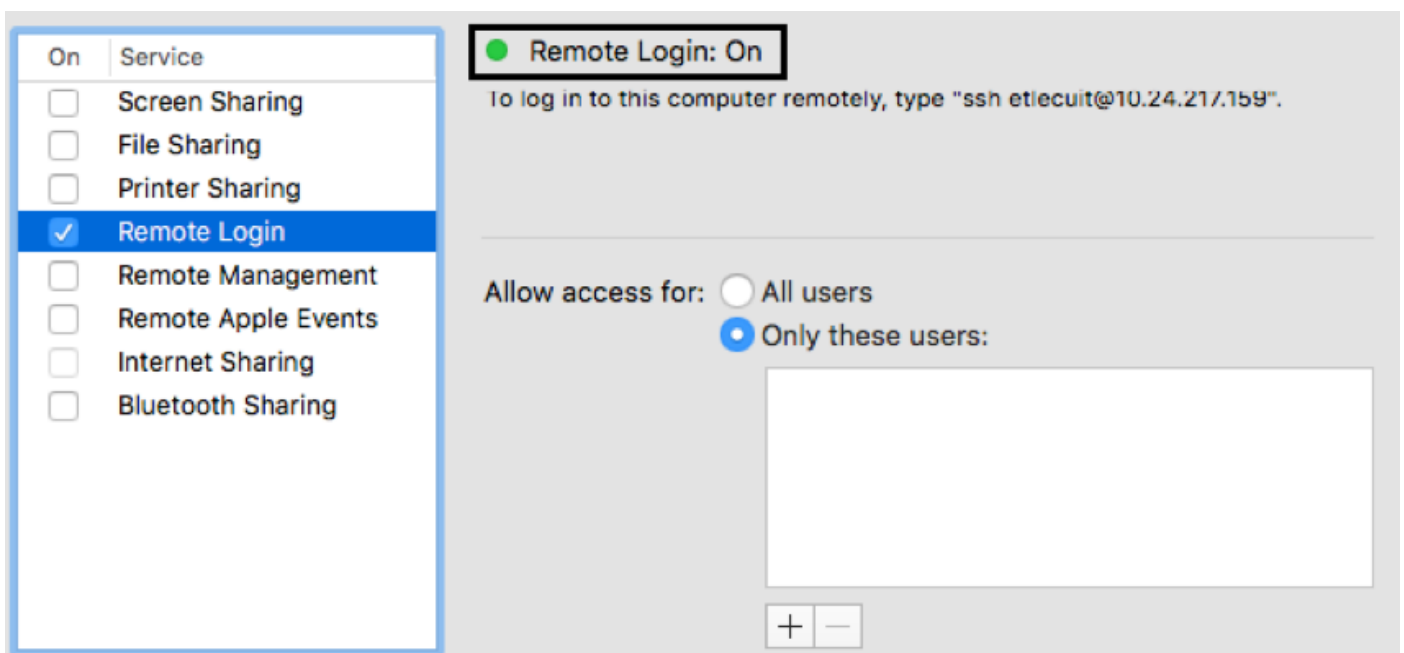
Enable SSH in MacBook host. Navigate to **Apple > System Preferences > Sharing**.



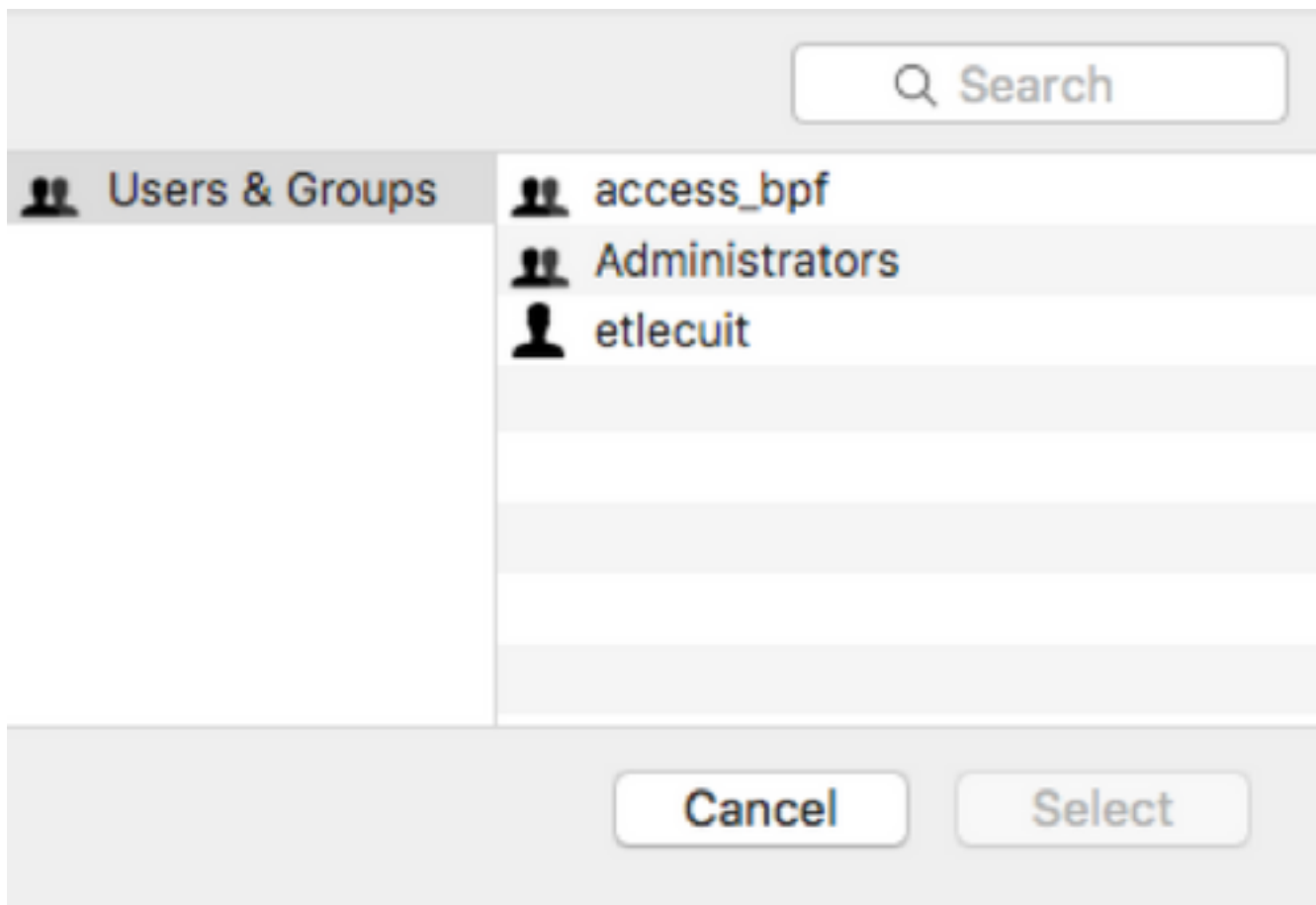
Select **Remote Login** service.



The remote login service will be changed from Off to On.

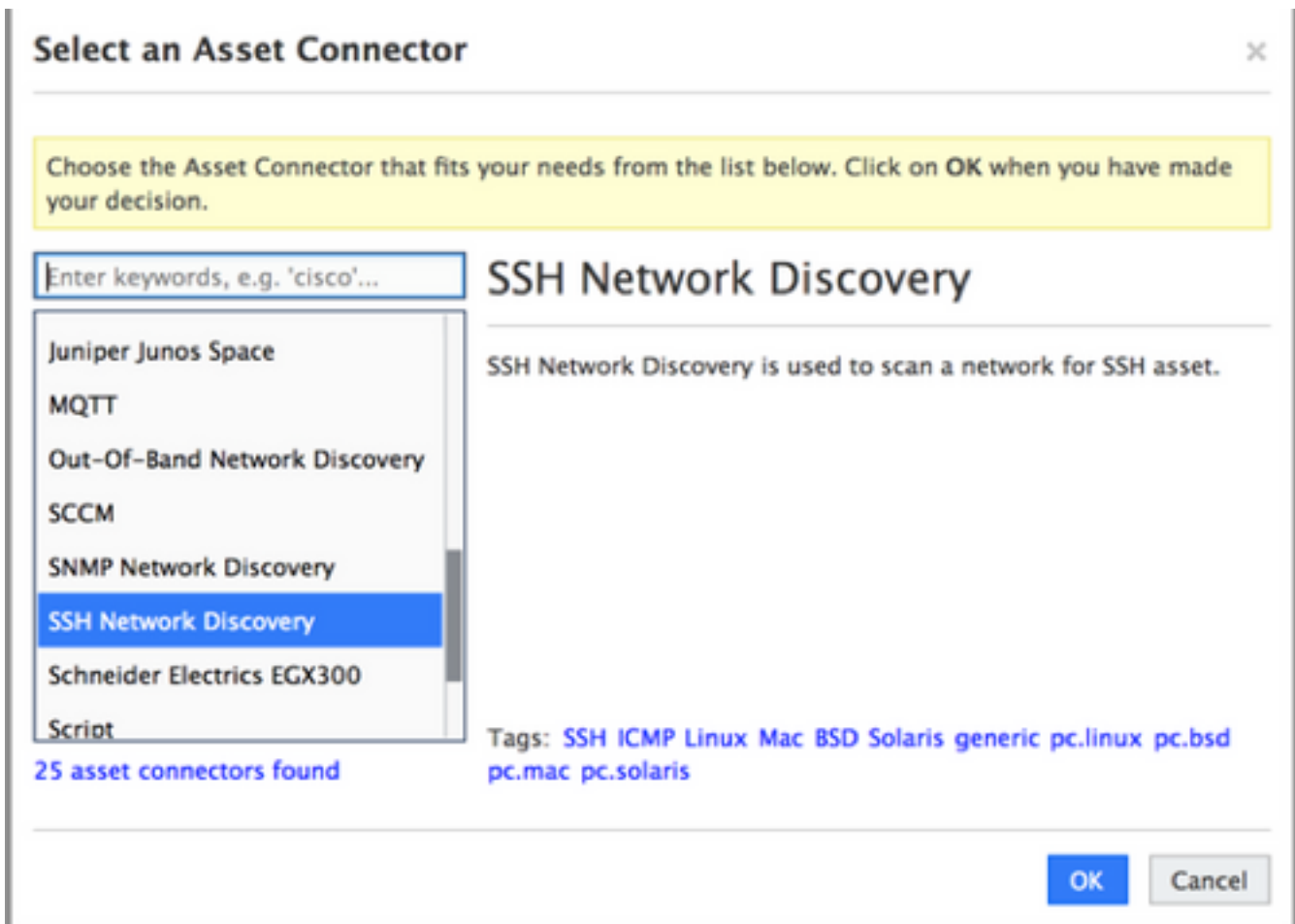


Allow the remote login to specific users:



Add SSH Asset Connector on CEM

In CEM, navigate to **Assets > Import > Add Asset Connector > SSH Network Discovery**.



Fill the connection and credentials information. The credentials info is the username and the password for the MacBook host.

Verify

Use this section to confirm that your configuration works properly.

Navigate to **Assets > Overview**.

●	---	25.0 W	████████████████████	ETLECUIT-M-22EH	monitor	
●	---	46.3 W	██████████	ETLECUIT-M-22EH	pc.mac	

Troubleshoot

This section provides information you can use to troubleshoot your configuration.

Navigate to Server harddisk unit **C > Program Files > Cisco Energy Management Controller > logs**.

Into this folder, open **controller file**.

Common Issue Logs

Incorrect Password: When we configured the password incorrectly, this log is saved in the

controller file:

INFO ASSET_CONNECTOR SSH Device Discovery Summary - Scanned IPs: 1 Pingable IPs: 1
Reachable Ports: 1 Already Imported IPs: 0 IP,Port and Credential combinations with Error: 1

How to Fix

Reconfigure the SSH credential in CEM interface **Assets > Import**.

Select **Options > Edit > Credentials**

██████████ Options ▾

SSH Network Discovery

Schedule: **every 12 hours** Status:

Assets: Last Run:

Import... Ignored:

Enriched: Deleted: