

# Use SPA525G and SPA525G2 as Bluetooth Handsfree

## Objective

This document showcases the procedure to use SPA525G and SPA525G2 as a Bluetooth hands-free for the cell phone connected to it via Bluetooth. The Bluetooth feature of the SPA525G/SPA525G2 can be used to pair a cell phone with it. After pairing if the cell phone has the hands-free profile 1.1/ hands-free profile 2.5 feature then the SPA525G/SPA525G2 can act as a Bluetooth hands-free for the cell phone.

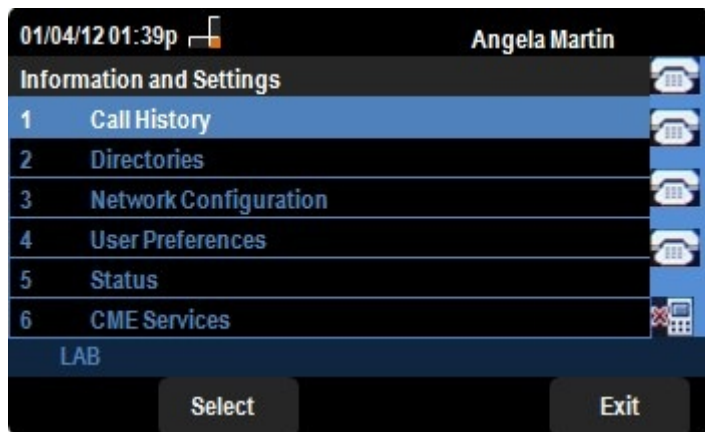
## Applicable Devices

- SPA 525G
- SPA 525G2

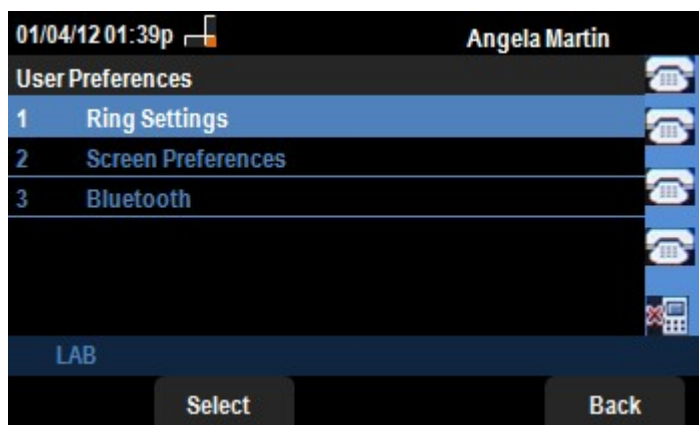
## Enable Bluetooth.

Step 1. Press the **Setup** button on the phone. The *Information and Settings* menu appears.

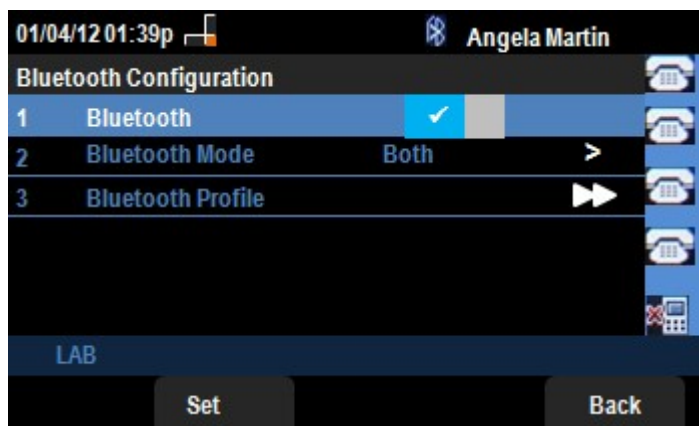




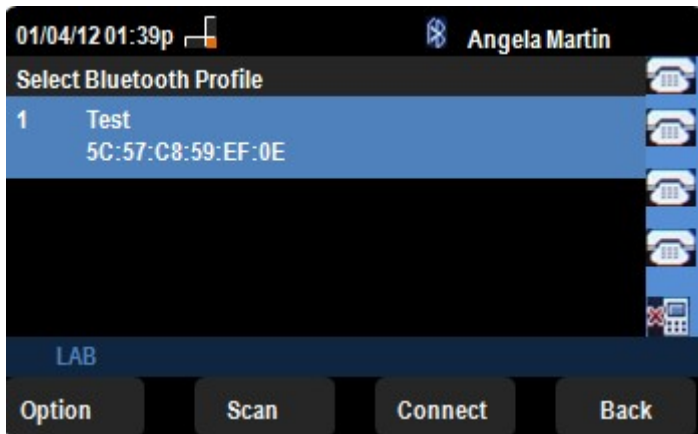
Step 2. Use the navigation keys and scroll down to User Preferences. Press the **Select** softkey.



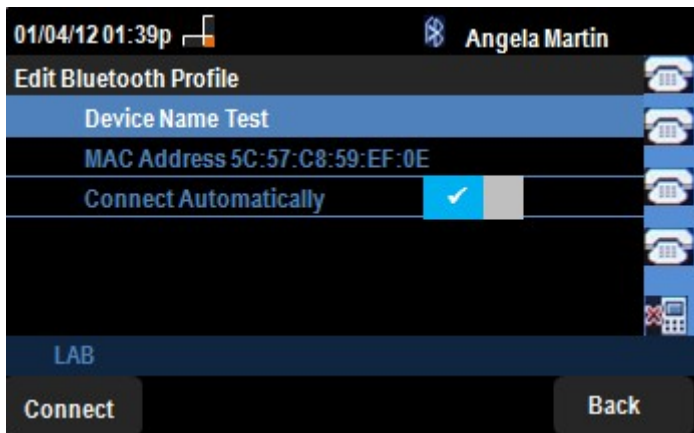
Step 3. Use the navigation keys and scroll down to Bluetooth. Press the **Select** softkey. The *Bluetooth Configuration* menu appears. Make sure the Bluetooth is enabled.



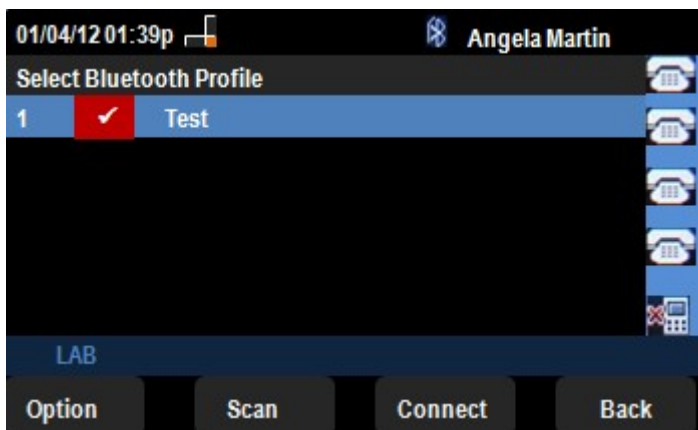
Step 4. With the Bluetooth Profiles option selected, press the **Right Arrow** navigation key.



Step 5. Press **Scan** softkey for scanning the cell phone. The active cell phone will be displayed in the Select a Bluetooth device pair list. Choose the appropriate cell phone and to proceed press the **Connect** softkey.



Step 5. Final settings are displayed in the Edit Bluetooth Profile list. Press **Connect** softkey. Check the cell phone.



Step 6. A connection request will pop up on the cell phone asking for the PIN. The default PIN is "0000". Enter PIN and allow the SPA525G/SPA525G2 to get connected with the cell phone. The cell phone after connection will be displayed in the Select Bluetooth Profile list on the SPA525G/SPA525G2.