

Upgrade Firmware on a Switch

Objective

The firmware is the program that controls the operation and functionality of the switch. It is the combination of software and hardware that has program code and data stored in it in order for the device to function.

Upgrading the firmware improves the performance of the device, which could provide enhanced security, new features, and bug fixes. This process is also necessary if you encounter the following:

- Frequent network disconnection or intermittent connection using the switch
- Slow connection

The objective of this document is to show you how to upgrade the firmware on your switch.

Applicable Devices

- Sx250 Series
- Sx350 Series
- SG350X Series
- Sx550X Series

Software Version

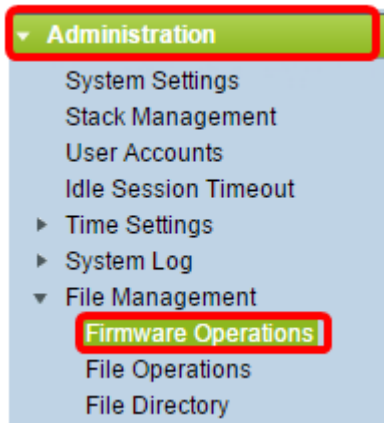
- 2.2.0.66

Upgrade Firmware on the Switch

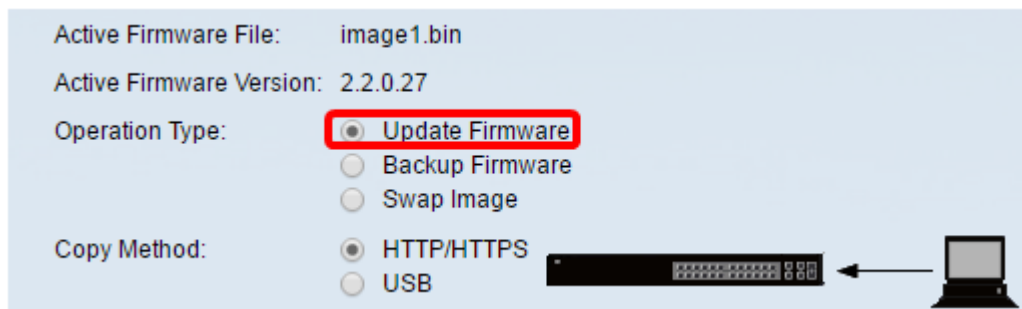
Upgrade the Firmware

Important: Before you proceed, make sure to download first the latest firmware of your switch from the [Cisco website](#).

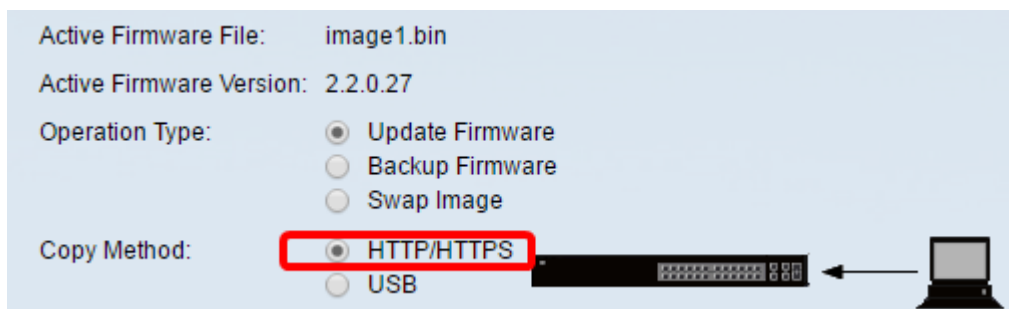
Step 1. Log in to the web-based utility of the switch and choose **Administration > File Management > Firmware Operations**.



Step 2. Click the **Update Firmware** radio button as the Operation Type.

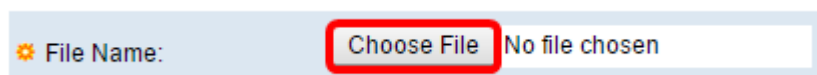


Step 3. Click the **HTTP/HTTPS** radio button as the Copy Method.

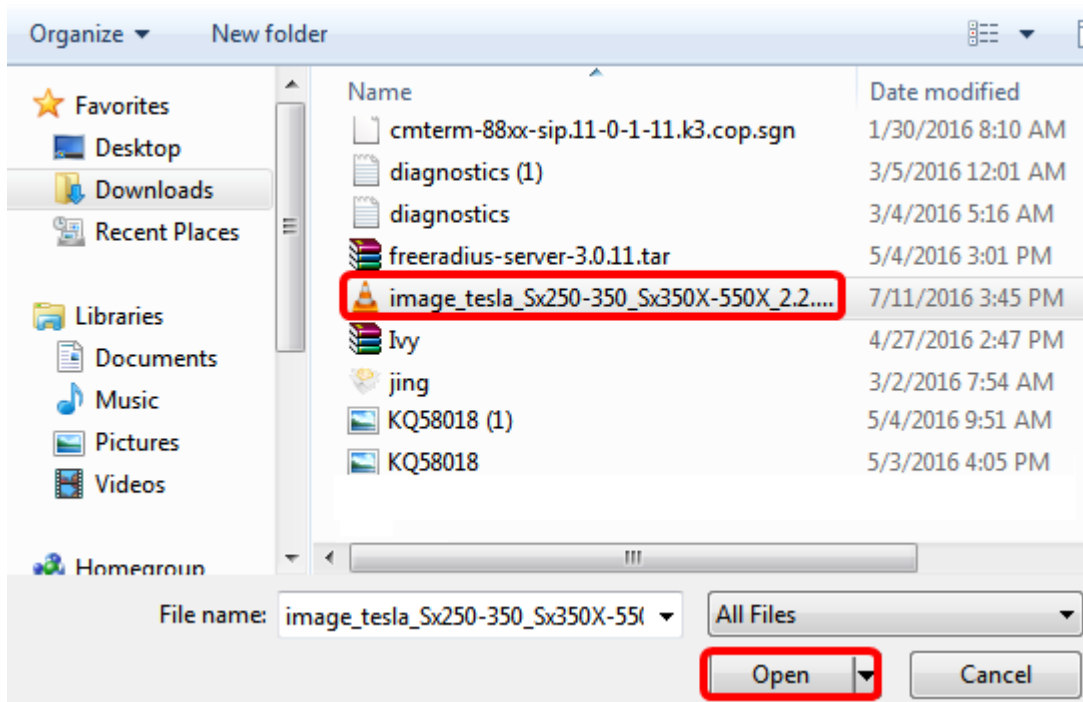


Note: Choose **USB** if you would like to transfer firmware to the switch using a USB flash drive.

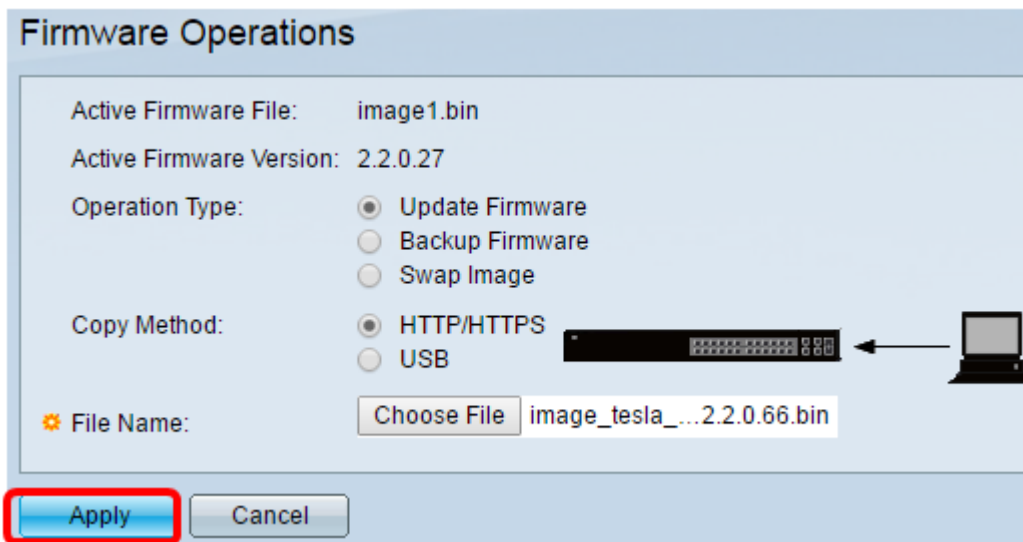
Step 4. For the File Name, click **Choose File** and locate the previously downloaded firmware file from your computer.



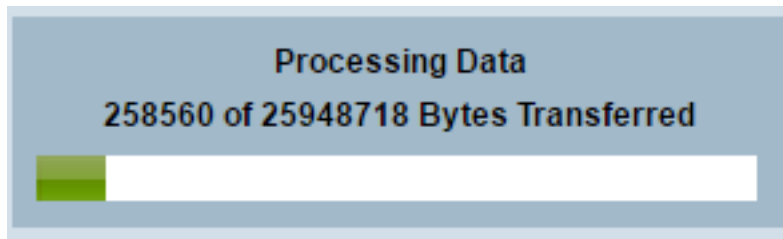
Step 5. Choose the file then click **Open**.



Step 6. Click **Apply**.



A progress bar will then appear showing the progress of the upgrade process.



When the process has been completed, the progress bar disappears and the screen will then indicate with a check mark that the upgrade process is successful.

Firmware Operations

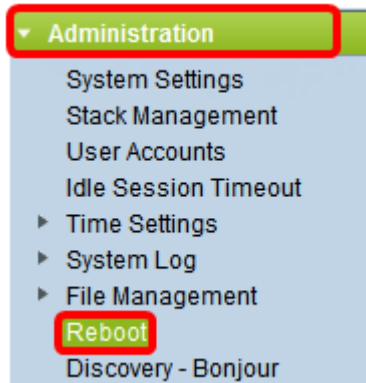


Success.

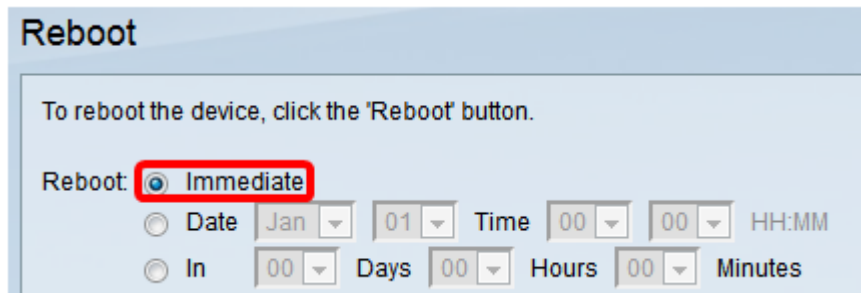
Reboot the Switch

For the upgraded firmware version to be applied, the switch must be rebooted.

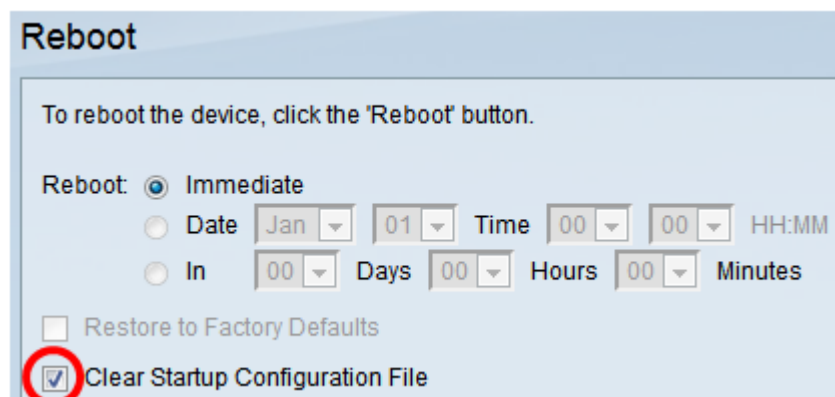
Step 1. Choose **Administration > Reboot**.



Step 2. Click **Immediate**.



Step 3. (Optional) Check the **Clear Startup Configuration File** check box to delete the startup configuration once the switch is rebooted. With this option chosen, the switch essentially performs a factory default reset since both the running and startup configurations will be deleted upon reboot.



Step 4. Click **Reboot**.

Reboot

To reboot the device, click the 'Reboot' button.

Reboot: Immediate
 Date Time HH:MM
 In Days Hours Minutes

Restore to Factory Defaults
 Clear Startup Configuration File

Reboot Cancel Reboot Cancel

The switch will then reboot. This process may take a few minutes.

Verify the New Firmware

To verify if the new firmware has been successfully upgraded:

Step 1. Choose **Administration > File Management > Firmware Operations**.

- Administration**
 - System Settings
 - Stack Management
 - User Accounts
 - Idle Session Timeout
 - ▶ Time Settings
 - ▶ System Log
 - ▼ File Management
 - Firmware Operations**
 - File Operations
 - File Directory

Step 2. Check the Active Firmware Version area to verify if the updated firmware has been successfully uploaded to the switch.

Firmware Operations

Active Firmware File: image_tesla_Sx250-350_Sx350X-550X_2.2.0.66.bin
Active Firmware Version: **2.2.0.66**

You should now have successfully upgraded the firmware of your switch.