

Restore to Factory Defaults on the RV315W VPN Router

Objective

The Reset to Factory Defaults option allows for users to delete all features that have been changed in the configuration utility. Typically, a reset will resolve many issues that arise with a device.

This article outlines how to reset to factory default settings.

Applicable Device

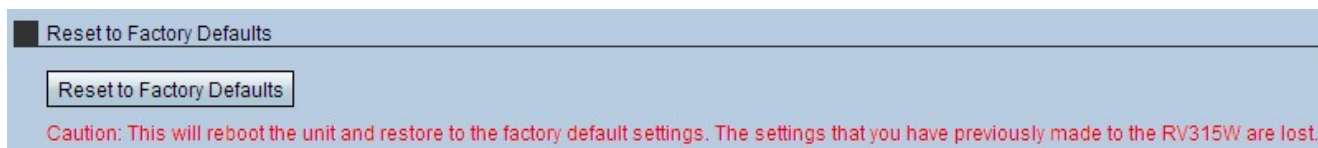
- RV315W

Software Version

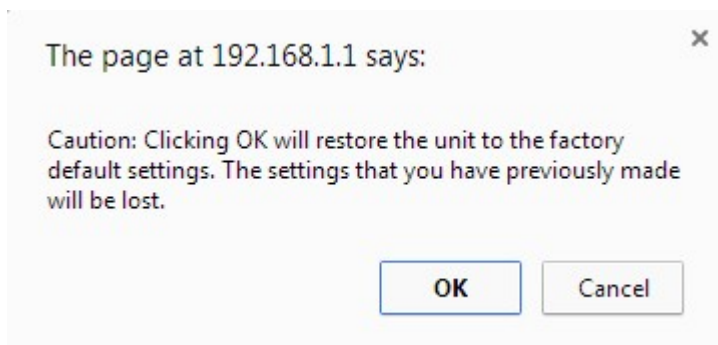
- 1.01.03

Reset to Factory Defaults

Step 1. Log in to the web configuration utility and choose **System Management > Reset to Factory Defaults**. The *Reset to Factory Defaults* page opens:



Step 2. Click **Reset to Factory Defaults**. A Caution window appears.



Step 3. Click **OK**. Wait for the reset to apply to the device. Once complete, all settings are restored to default settings.