

Manage Floor Plans and Devices using FindIT Network Probe

Objective

The Floor Plan view on the FindIT Network Probe allows you to keep track of the physical locations of your network devices. You can upload a plan for each floor in the building or buildings, and position each of the network devices on the plan. This helps you easily locate devices if maintenance is required.

The Floor Plan is similar in operation to the Topology Map, and devices placed on the Floor Plan can be operated in the same way as devices in the Topology Map.

This article provides instructions on how to manage Floor Plans on your FindIT Network Probe and place network devices according to their locations.

Manage Floor Plans using FindIT Network Probe

Create a New Floor Plan

Step 1. Log in to the Administration GUI of your FindIT Network Probe.



FindIT Network Probe

cisco

.....

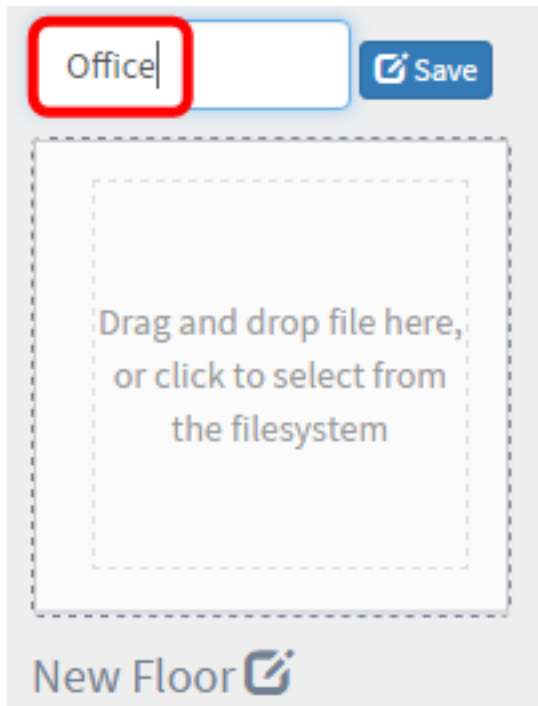
English ▼

Login

Step 2. Choose **Discovery > Floor Plan**.

The screenshot shows the FindIT Network Probe interface. On the left, a dark sidebar menu contains three items: 'Discovery' (highlighted with a red box), 'Dashboard', and 'Port Management'. On the right, the main header area displays the Cisco logo and the text 'FindIT Network Probe'. Below the header, a navigation bar contains four buttons: 'Topology', 'Inventory', 'Floor Plan' (highlighted with a red box), and 'Refresh'.

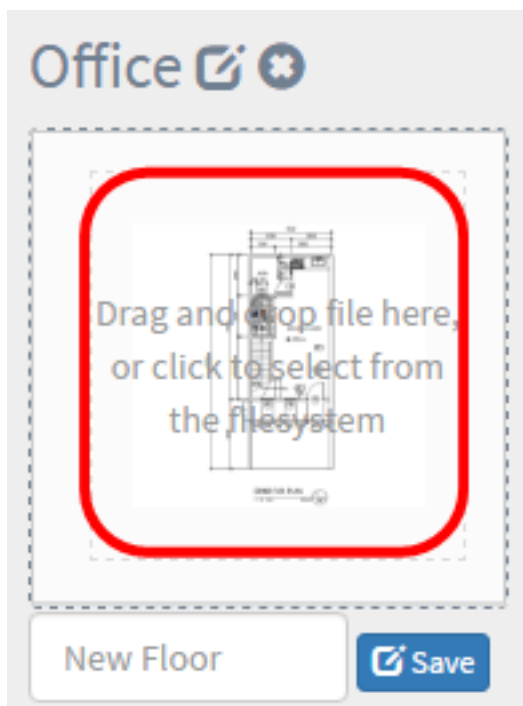
Step 3. Enter a name for the building that houses the floor into the *New Building* field.



Note: In this example, Office is used as the building name.

Step 4. Click **Save**.

Step 5. Drag and drop an image file containing the floor plan onto the target area for the new floor. Supported image formats are *.png*, *.gif*, and *.jpg*. The maximum image size is up to 500 KB.



Note: Alternatively, you can click on the target area to upload an image from your computer.

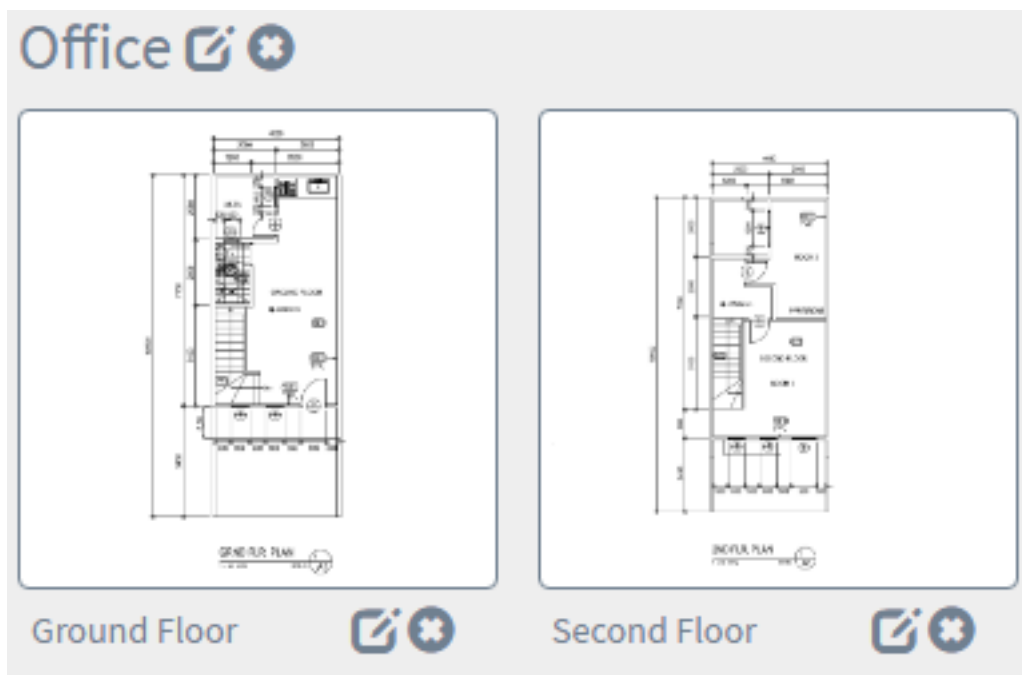
Step 6. Enter the floor name into the *New Floor* field.



Note: In this example, Ground Floor is used as the floor name.

Step 7. Click **Save**.

Step 8. Repeat steps 6 to 7 for each floor with network devices.

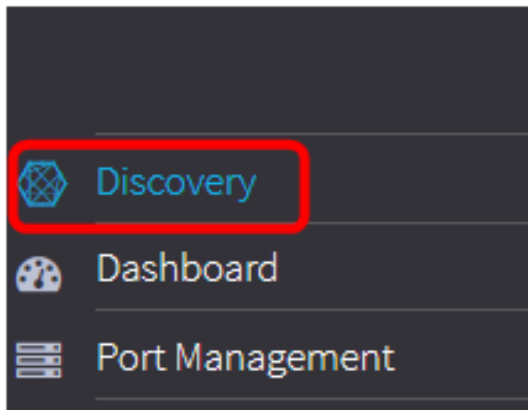


Step 9. Repeat steps 3 to 8 for each building.

You should now have created new buildings and floor plans.

Edit the Floor Plan

Step 1. Choose **Discovery > Floor Plan**.



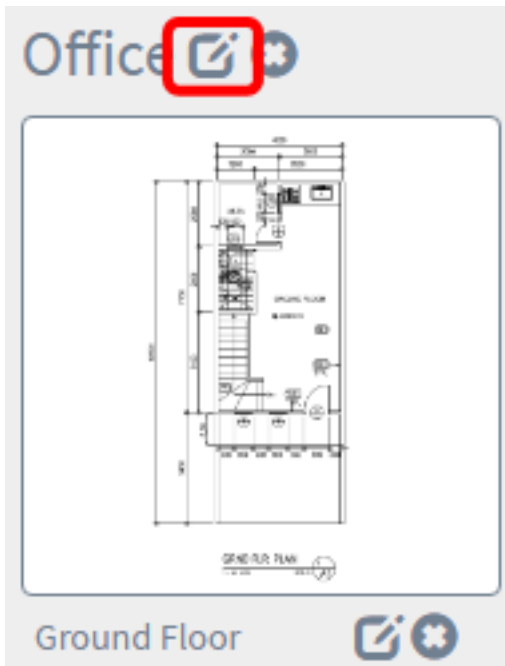
Topology

Inventory

Floor Plan

Refresh

Step 2. Click the **Edit** button next to the building name to edit a name.

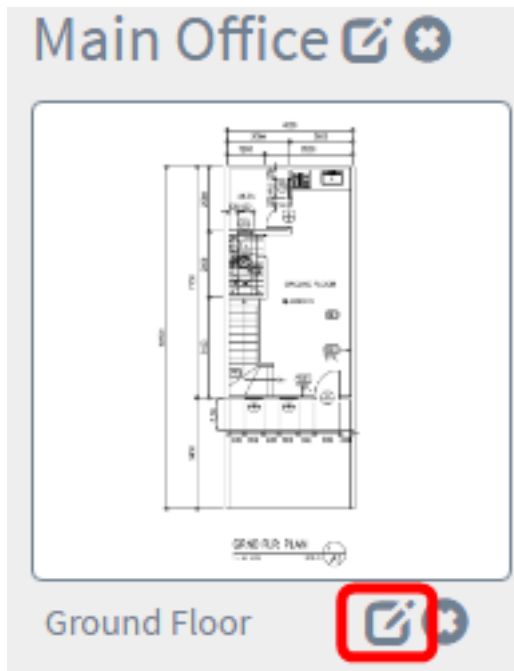


Step 3. Enter the new building name in the *Building Name* field.

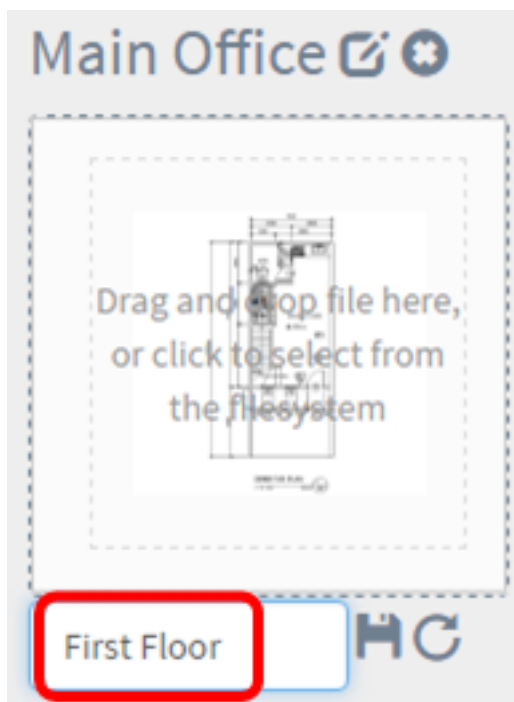


Step 4. Click the **Save** button.

Step 5. Click the **Edit** button next to the floor name to edit a name.

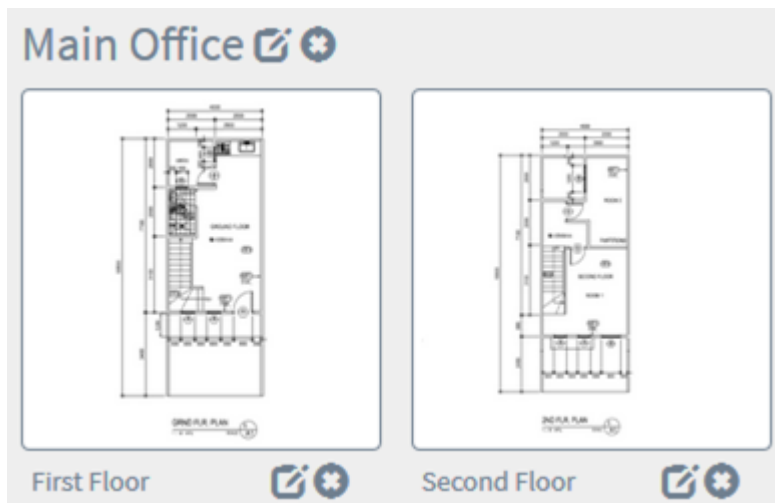


Step 6. Enter the new floor name in the *Floor Name* field.



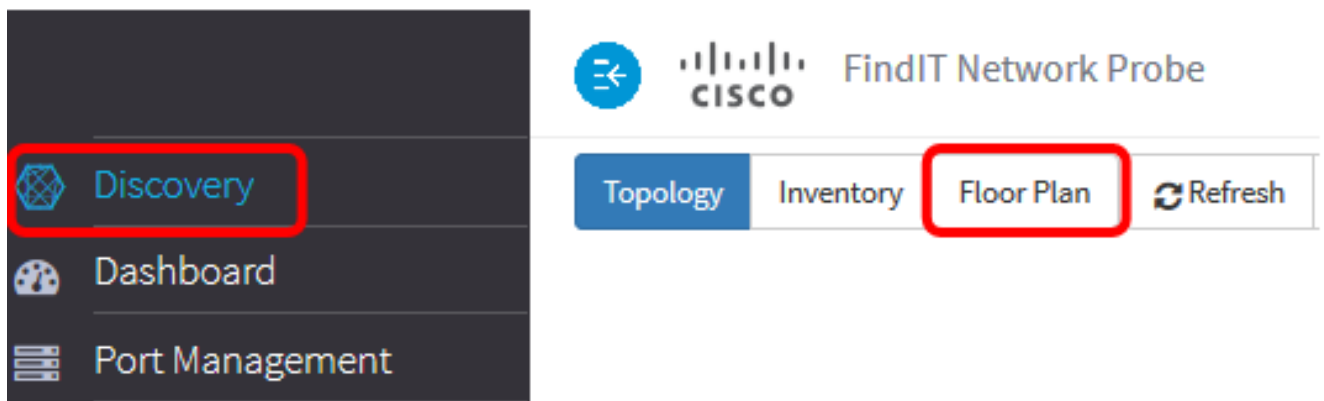
Step 7. Click the **Save** button.

You should now have saved the changes in your floor plans.

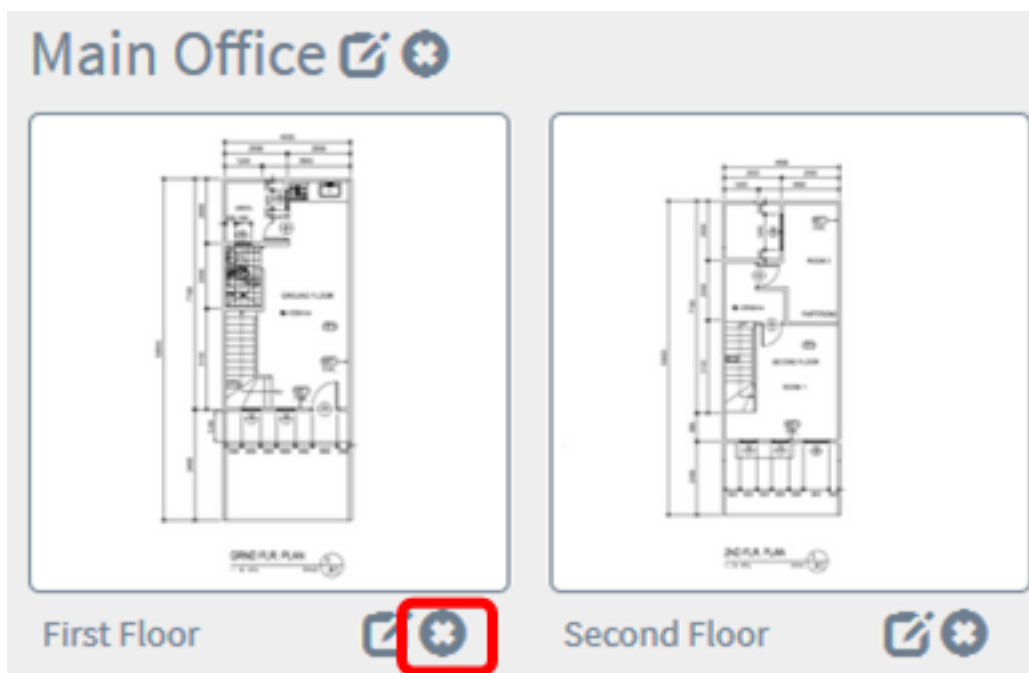


Remove a Floor Plan

Step 1. Choose **Discovery > Floor Plan**.



Step 2. To delete a floor plan, click the **Delete** icon next to the floor plan name that you want to remove.



Step 3. Click **Ok** to proceed.

Delete Building

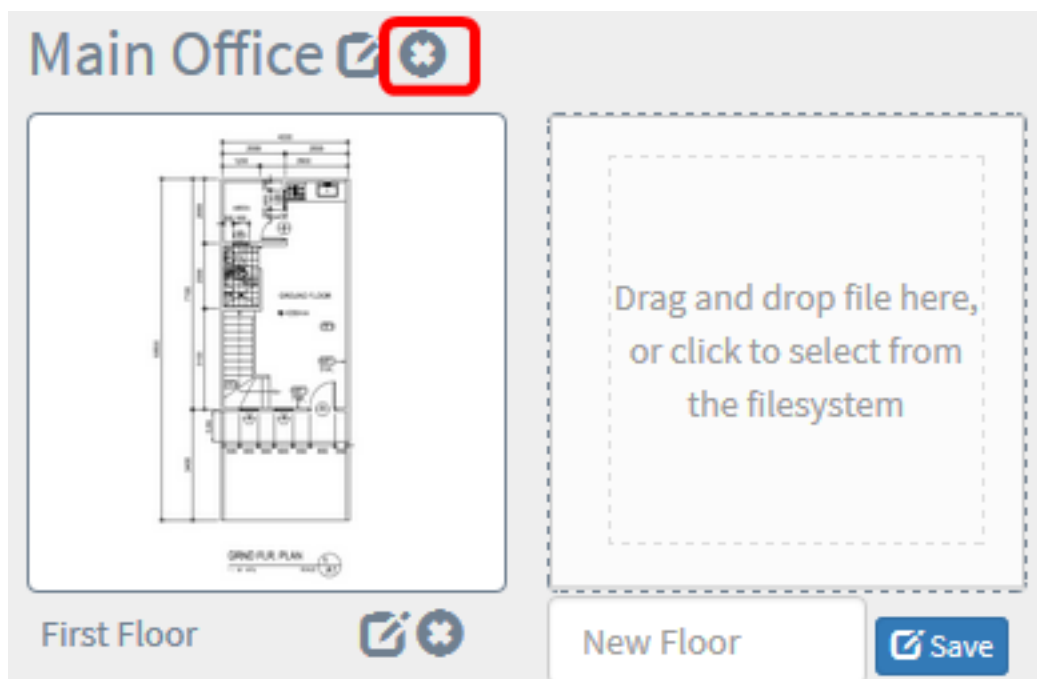


i Do you really want to delete this floor?

Ok

Cancel

Step 4. To delete a building , click the **Delete** icon next to the building name that you want to remove.



Step 5. Click **Ok** to proceed.

Delete Building



i Do you really want to delete the entire building?

Ok

Cancel

You should now have removed your floor plans.

Manage Devices in the Floor Plan

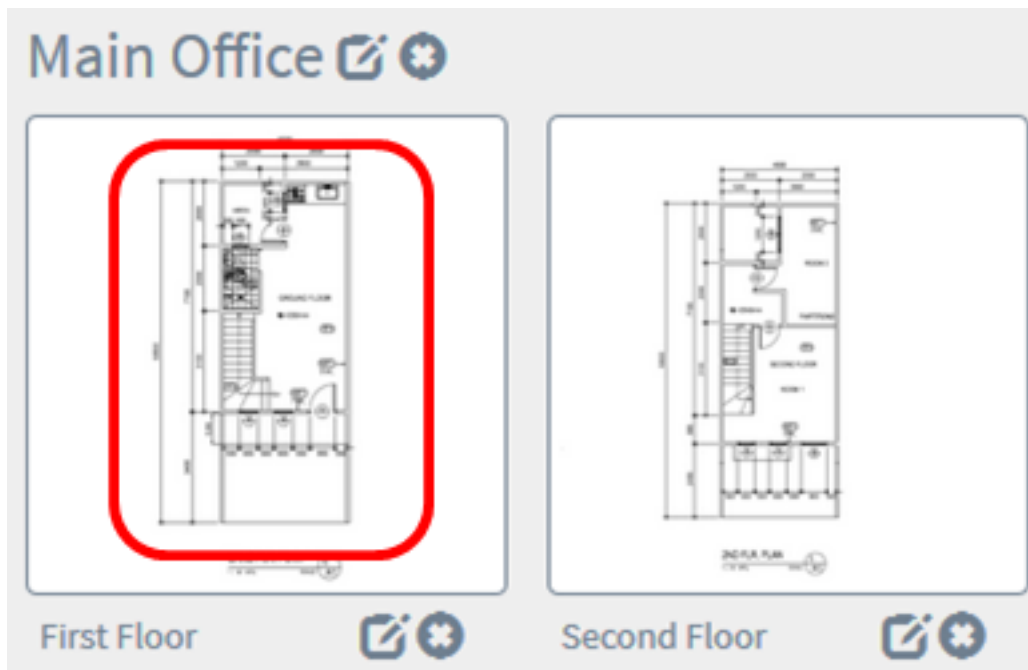
You can manage the floor plans for the site and place your network devices in order to document the location of your device. The following steps guide you through this process.

Add Network Devices on a Floor Plan

Step 1. In the Discovery work pane, click **Floor Plan**.



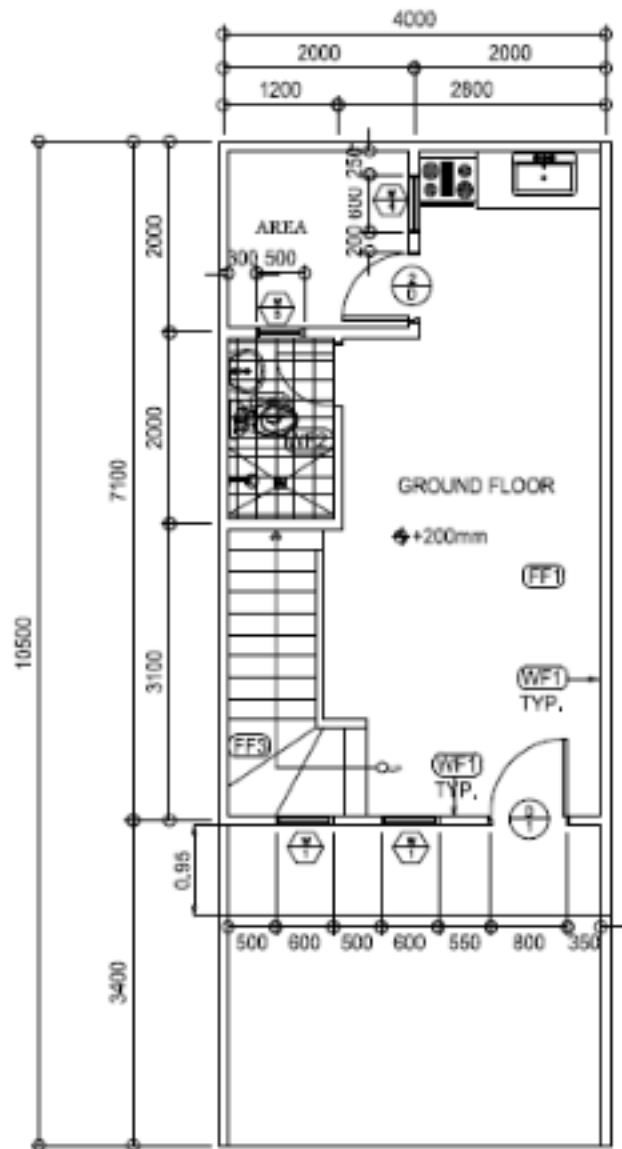
Step 2. Click a floor plan.



Note: In this example, First Floor in the Main Office is chosen.

Step 3. To place a device on the floor plan, enter the device name or IP address into the search box at the bottom of the screen. As you type, the matching devices will be displayed. Grayed-out device icons represent devices that have already been placed on a floor plan.

Floor Plan / Main Office - First Floor



GRND FLR. PLAN
1: 50 MTS. SCALE: 1/A1

switch



[switch1f47a8](#)
192.168.1.130



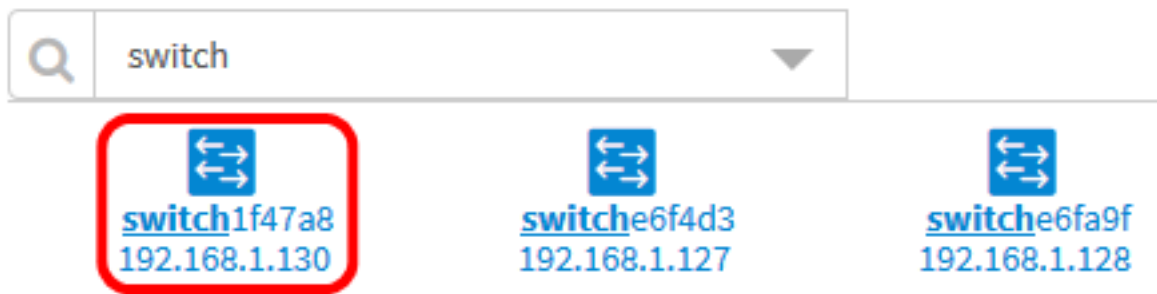
[switche6f4d3](#)
192.168.1.127



[switche6fa9f](#)
192.168.1.128

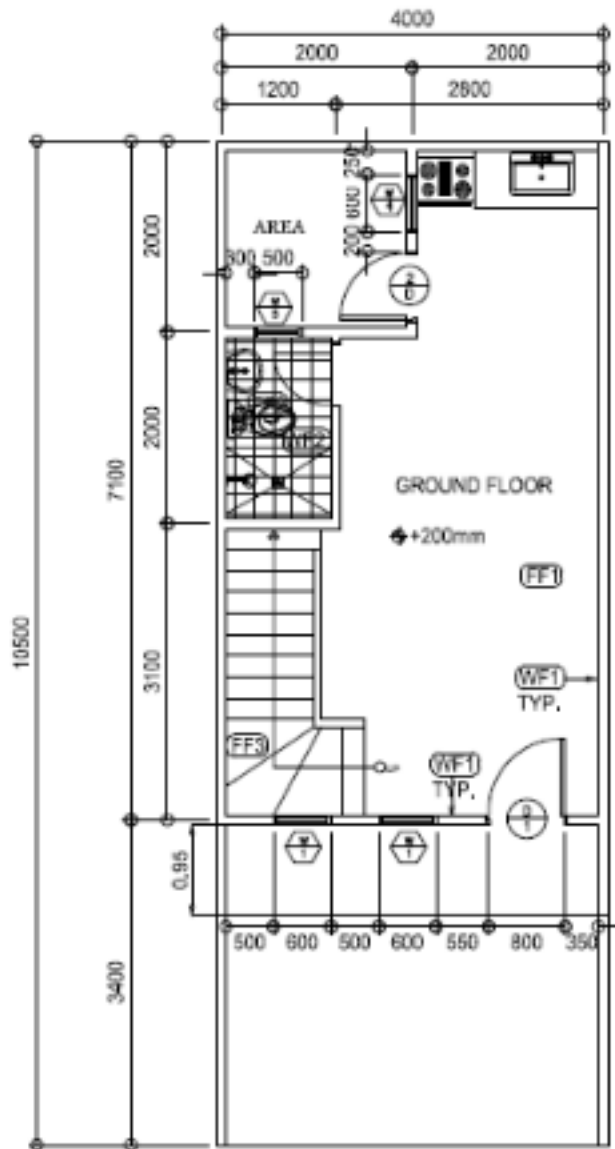
Note: In this example, switch is used to search.

Step 4. Click on a device to add it to the floor plan.



Note: In this example, switch1f47a8 is chosen.

The chosen device will be displayed in the floor plan.



GRND FLR. PLAN
1 : 80 MTS. SCALE: 1/A1



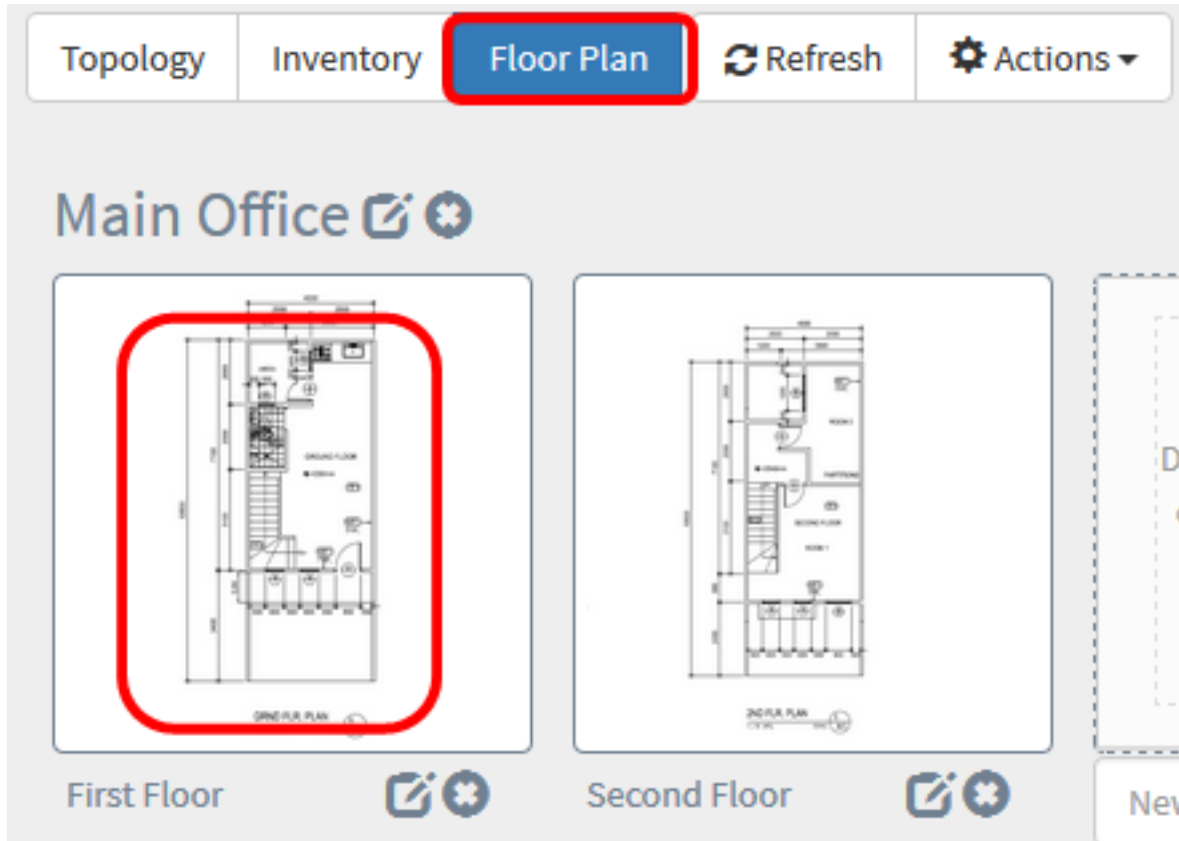
switch



You should now have added network devices in your floor plan.

Position Network Devices on a Floor Plan

Step 1. Choose **Discovery > Floor Plan** then click a floor plan.



Note: In this example, First Floor in the Main Office is chosen.

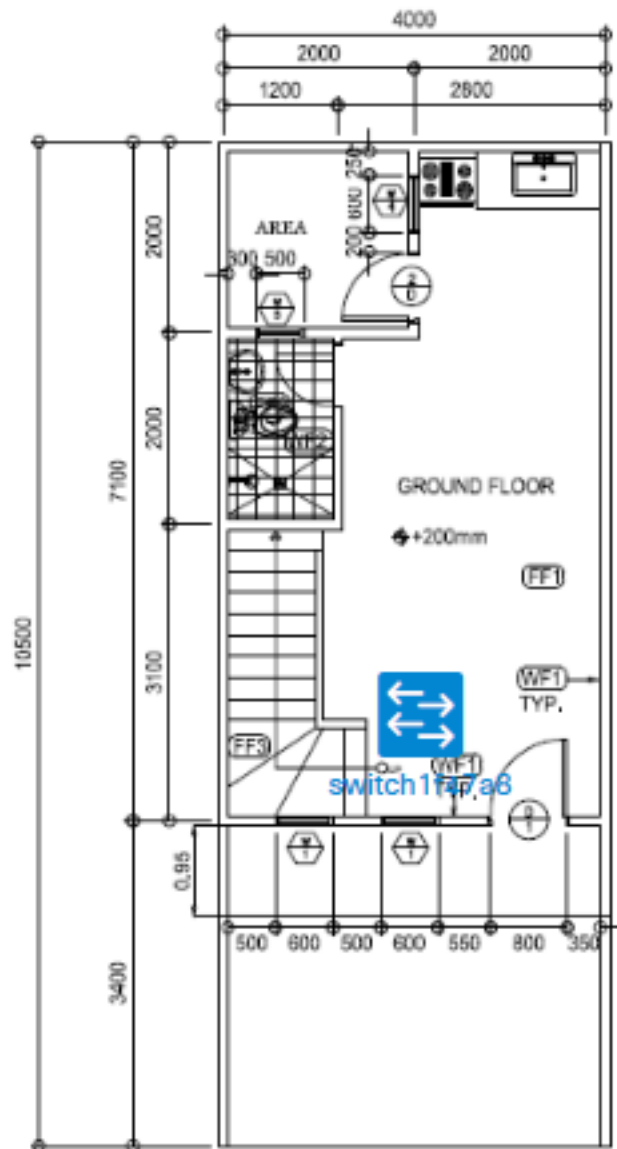
Step 2. Click on a device to add it to the floor plan.

Important: If you choose a device that has already been placed on another floor plan, it will be removed and added to this one.

Floor Plan / Main Office - First Floor




wap0a519e



GRND FLR. PLAN

1 : 80 MTS.

SCALE

1
A1



wap


wap0a519e
192.168.1.157

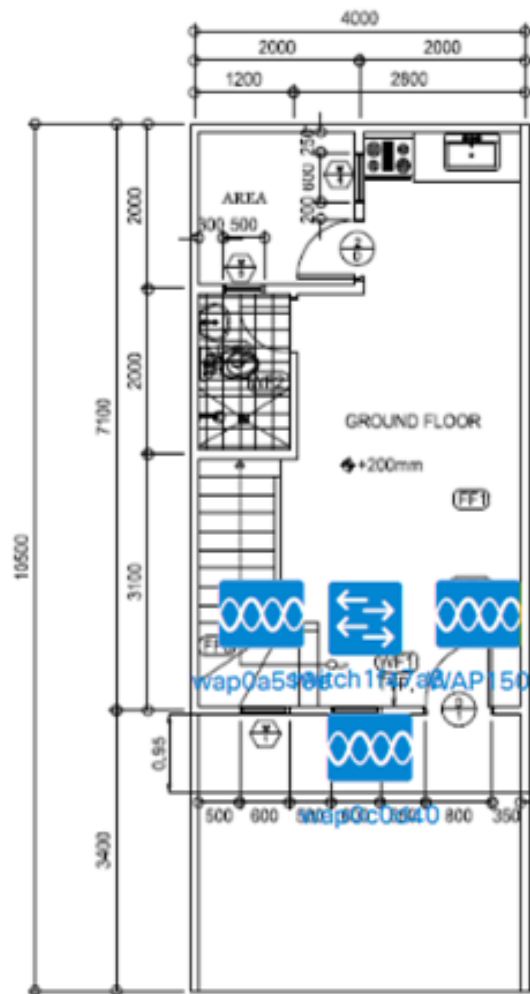

wap150
192.168.1.123


wap0c0d40
192.168.1.126

Step 3. Click and drag the device to move into the desired location in the floor plan.

Step 4. Repeat steps 2 and 3 until all devices have been added to the floor plan.

Floor Plan / Main Office - First Floor



GRND FLR. PLAN
1:80 MTS. SCALE: 1/A1

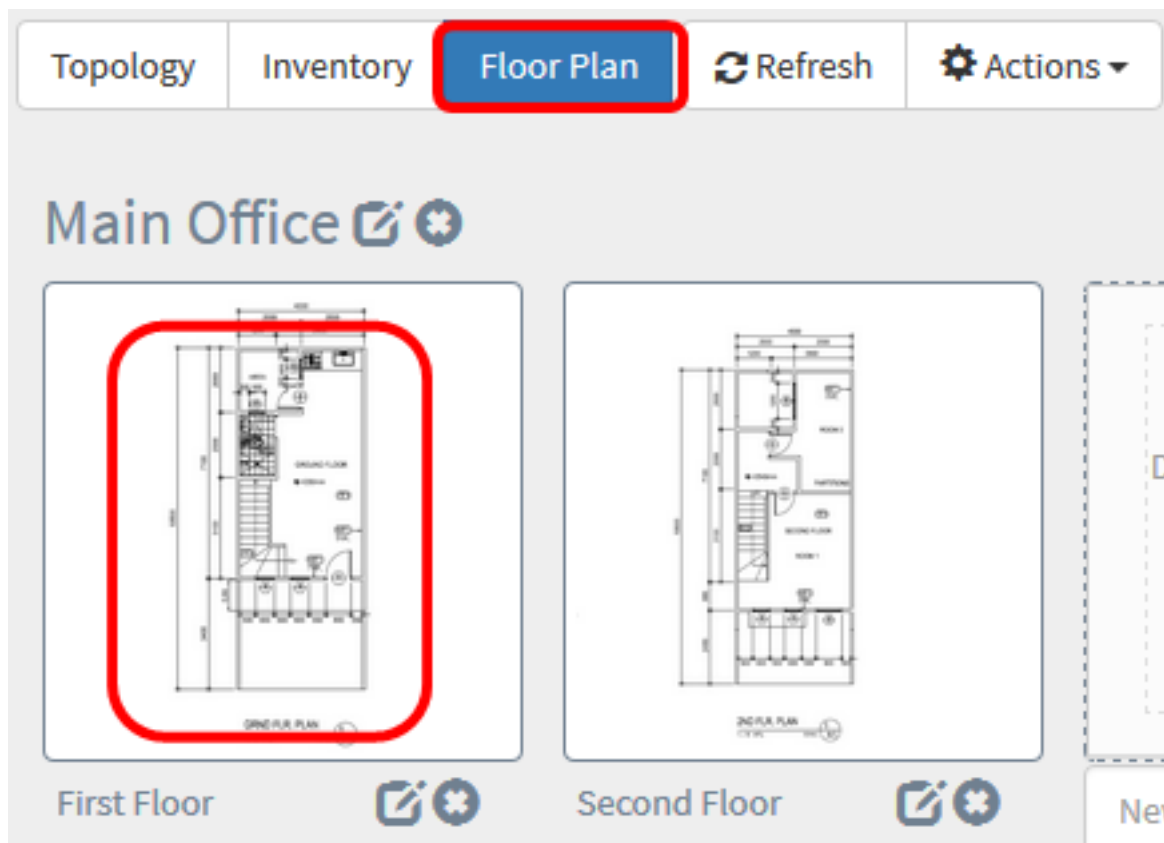
Search bar containing the text 'wap'.

- wap0a519e 192.168.1.157
- wap150 192.168.1.123
- wap0c0d40 192.168.1.126
- wap0c0dd0 192.168.1.124

You should now have positioned your network devices on your floor plan.

Remove a Device from the Floor Plan

Step 1. Choose **Discovery > Floor Plan** then click a floor plan.



Note: In this example, First Floor is chosen.

Step 2. Click the device that you want to remove.



WAP150

IP address:192.168.1.123

Basic Information:



Model : WAP150

Description : WAP150 Wireless-AC/N Dual Radio Access Point with PoE

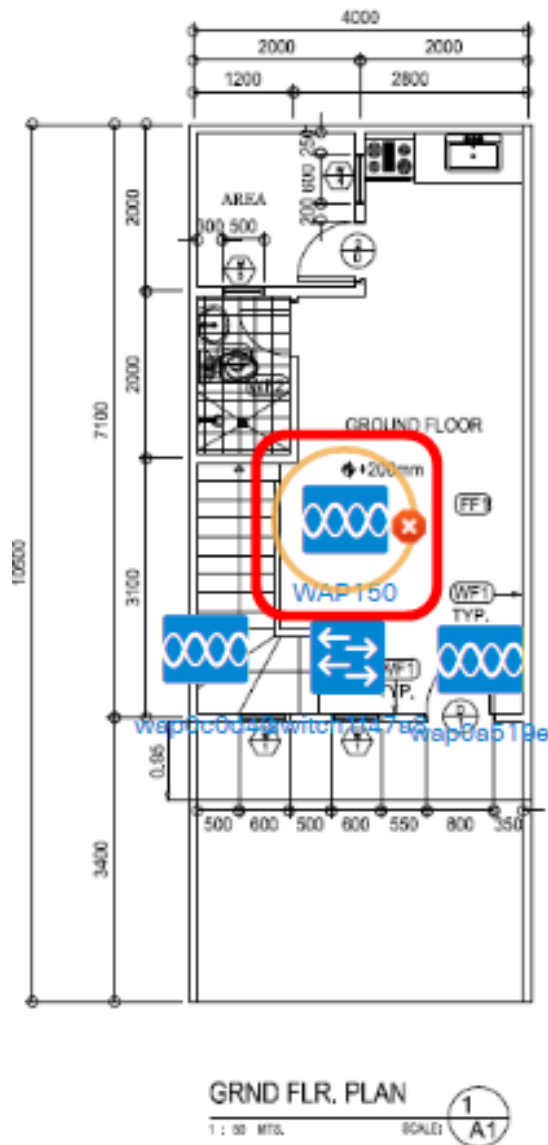
Firmware Version : 1.0.1.7

PID VID : WAP150-E-K9-EU V01

MAC Address : 80:E8:6F:0A:5D:EE

Serial Number : DNI1951A2K3

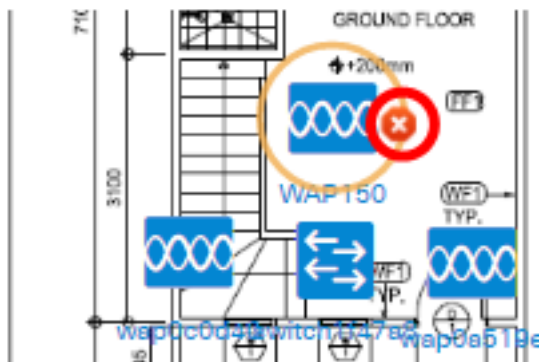
Status : Online



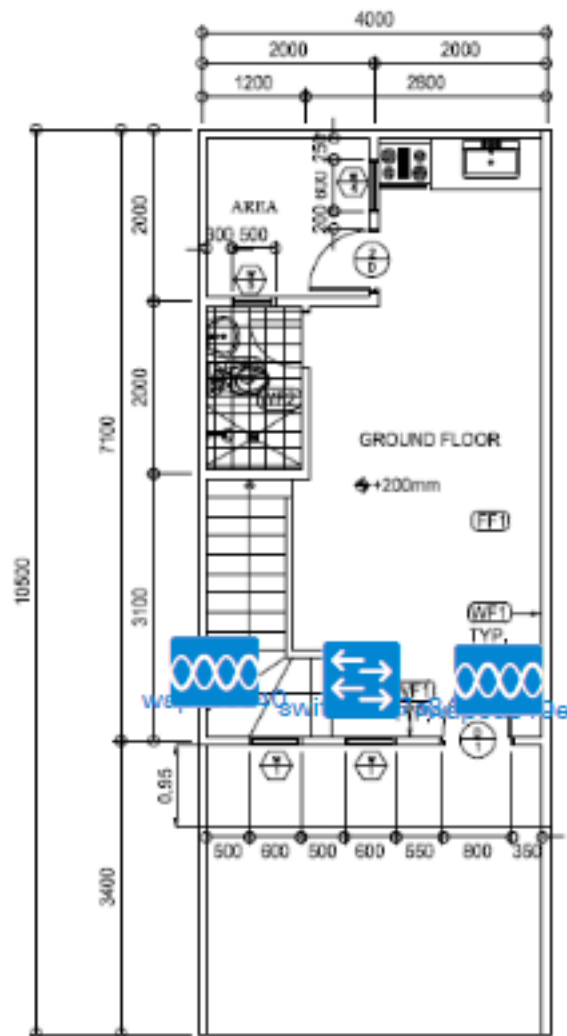
Notifications:

Note: In this example, a WAP150 is chosen.

Step 3. Click on the **Delete** button that is displayed to remove the device from the floor plan.



You should now have removed a device from the floor plan.



GRND FLR. PLAN
 1 : 80 MTS. SCALE: 1/A1

wap


wap0a519e
 192.168.1.157


wap0c0d40
 192.168.1.126


wap150
 192.168.1.123