

Compatible Small Form-factor Pluggables (SFP) for Emulex LPe31002-M6 and LPe32002-M2

Contents

[Introduction](#)

[What SFP are compatible](#)

[For LPe31002-M6 Part Number: UCSC-PCIE-BD16GF:](#)

[For LPe32002-M2 Part Number: UCSC-PCIE-BD32GF:](#)

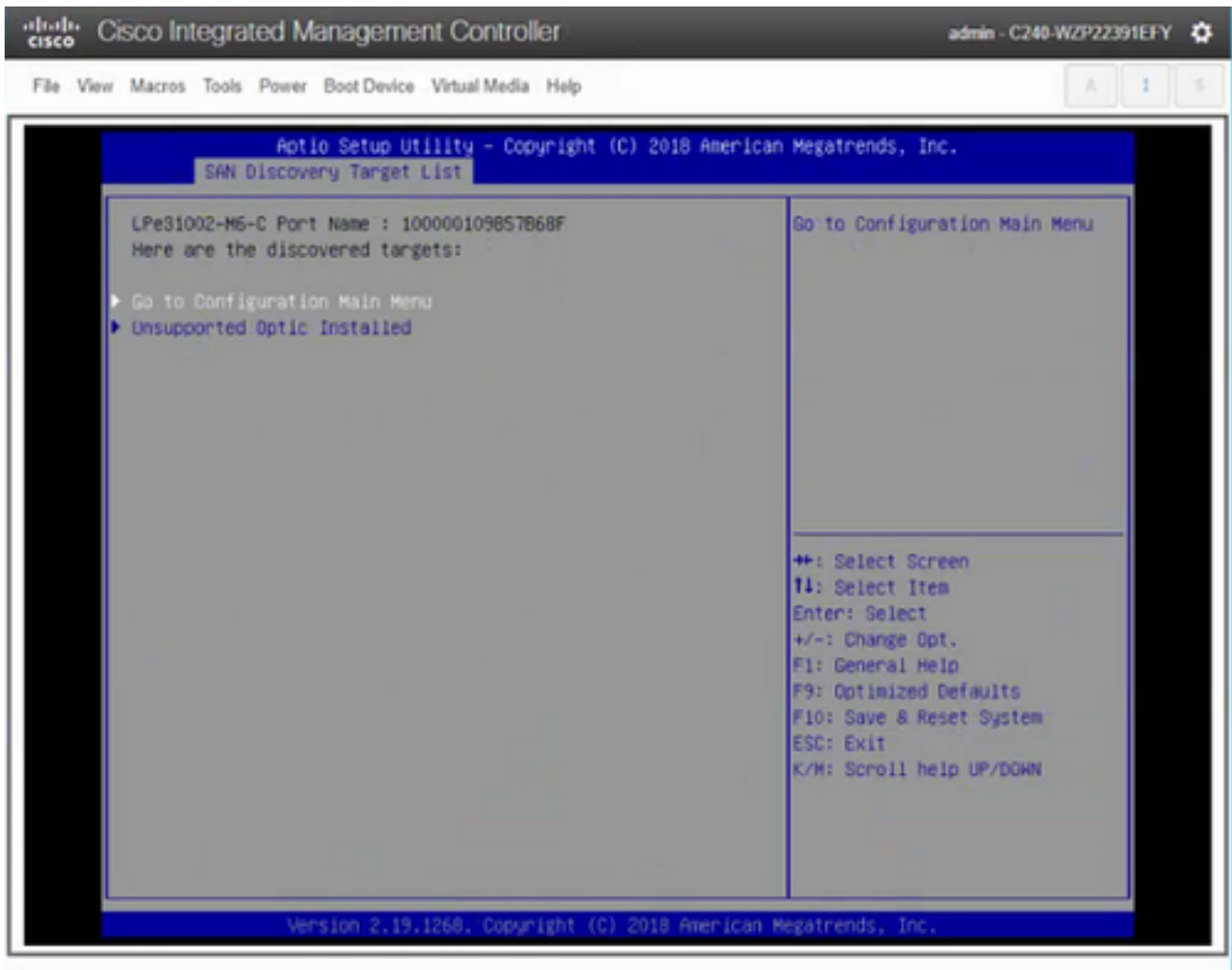
[Related Information](#)

Introduction

This document describes the compatible small form-factor pluggables (SFP), Broadcom has qualified for Emulex LPe31002-M6, Part Number: UCSC-PCIE-BD16GF, and Emulex LPe32002-M2, Part Number: UCSC-PCIE-BD32GF.

You might see an error in BIOS stating "Unsupported Optic Installed", if incorrect SFP is installed into Emulex.

Press **F2** During Boot to go to BIOS > **Advanced** tab > **Emulex LPe31002-M6** > **Scan for Fibre Devices** or **Find Target**



* Screenshot For Reference, BIOS and ROM May Change

What SFP are compatible

The following optics have been qualified by Broadcom for

- Emulex LPe31002-M6, Part Number: UCSC-PCIE-BD16GF, and
- Emulex LPe32002-M2, Part Number: UCSC-PCIE-BD32GF.

For LPe31002-M6 Part Number: UCSC-PCIE-BD16GF:

Avago -16G

AFBR-57F5MZ-ELX



* Picture Only For Reference Stickers May Change

Finisar – 16G

FTLF8529P3BCV-EM



* Picture Only For Reference Stickers May Change

For LPe32002-M2 Part Number: UCSC-PCIE-BD32GF:

Avago – 32G

AFBR-57G5MZ-ELX



* Picture Only For Reference Stickers May Change

Finisar – 32G

FTLF8532P4BCV-EM



* Picture Only For Reference Stickers May Change

Each of these optics are customized for Emulex, as depicted by the part number suffix. Broadcom adapters perform a check upon boot to verify that a certified optic is plugged in.

Related Information

- [Technical Support & Documentation - Cisco Systems](#)