

Update Qlogic HBA Drivers on Windows Servers

Contents

[Introduction](#)

[Prerequisites](#)

[Requirements](#)

[Components Used on the demonstration](#)

[Configure](#)

[Preparing for the upgrade:](#)

[For Windows:](#)

[Extracting the drivers](#)

[Update the Drivers](#)

[Verify](#)

[References and useful links:](#)

Introduction

This document describes the process of upgrading the HBA drivers from the Qlogic adapters on Windows Servers.

Prerequisites

Requirements

Cisco recommends that you have knowledge of these topics:

- UCS C-Series
- Windows Server OS.
- Qlogic HBA adapters

Components Used on the demonstration

The information in this document is based on these software and hardware versions:

- UCSC-C240-M6S
- Firmware version: 4.3(5.250030)
- Windows Server 2022
- Qlogic HBA adapter -Cisco QLE2692 Dual Port 16Gb FC to PCIe Gen3 x8 Adapter - UCSC-PCIE-QD16GF

The information in this document was created from the devices in a specific lab environment. All of the devices used in this document started with a cleared (default) configuration. If your network is live, ensure that you understand the potential impact of any command.

Configure

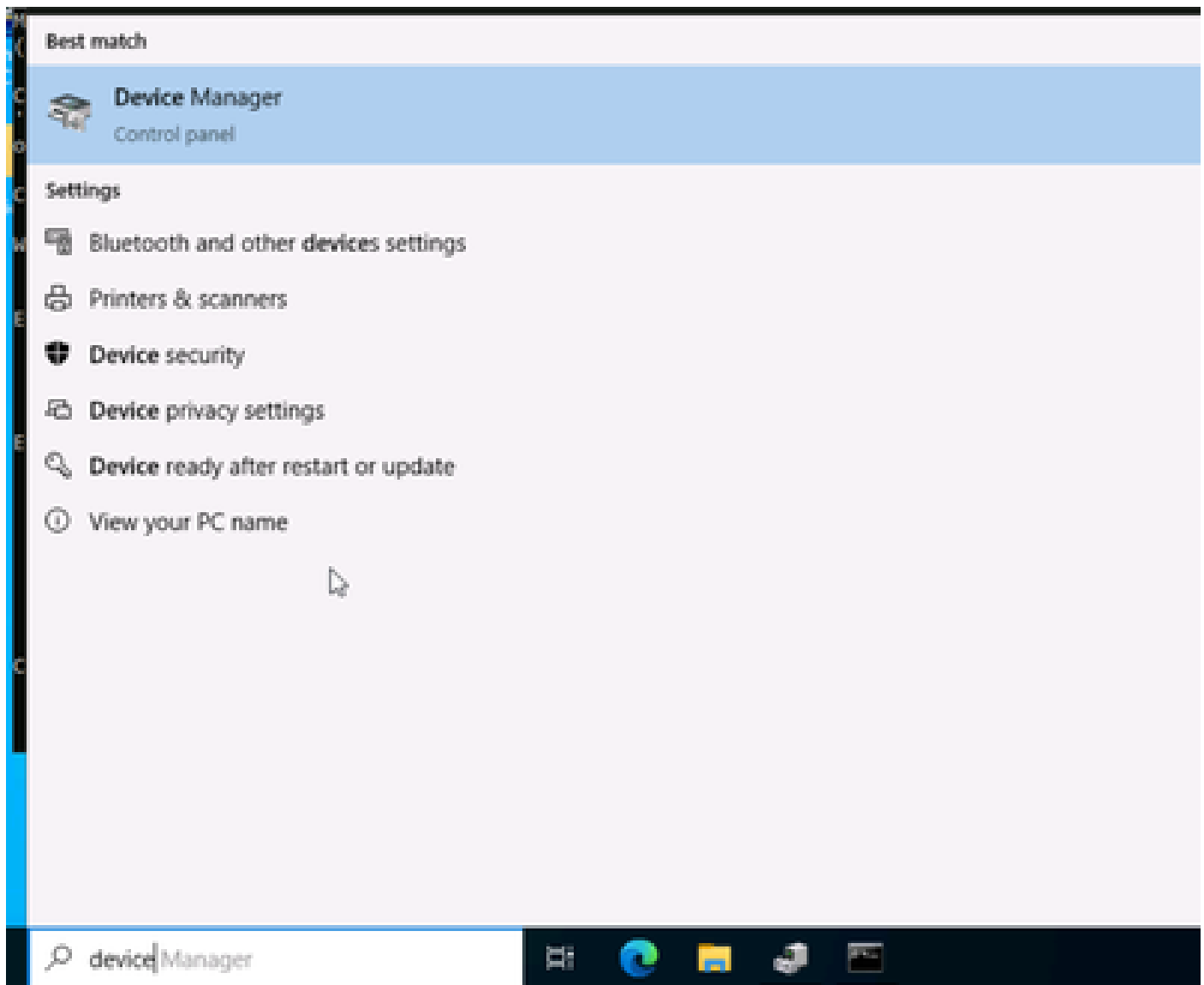
This procedure describes how to Upgrade Qlogic HBA drivers on UCS C series servers running Windows server OS.

Preparing for the upgrade:

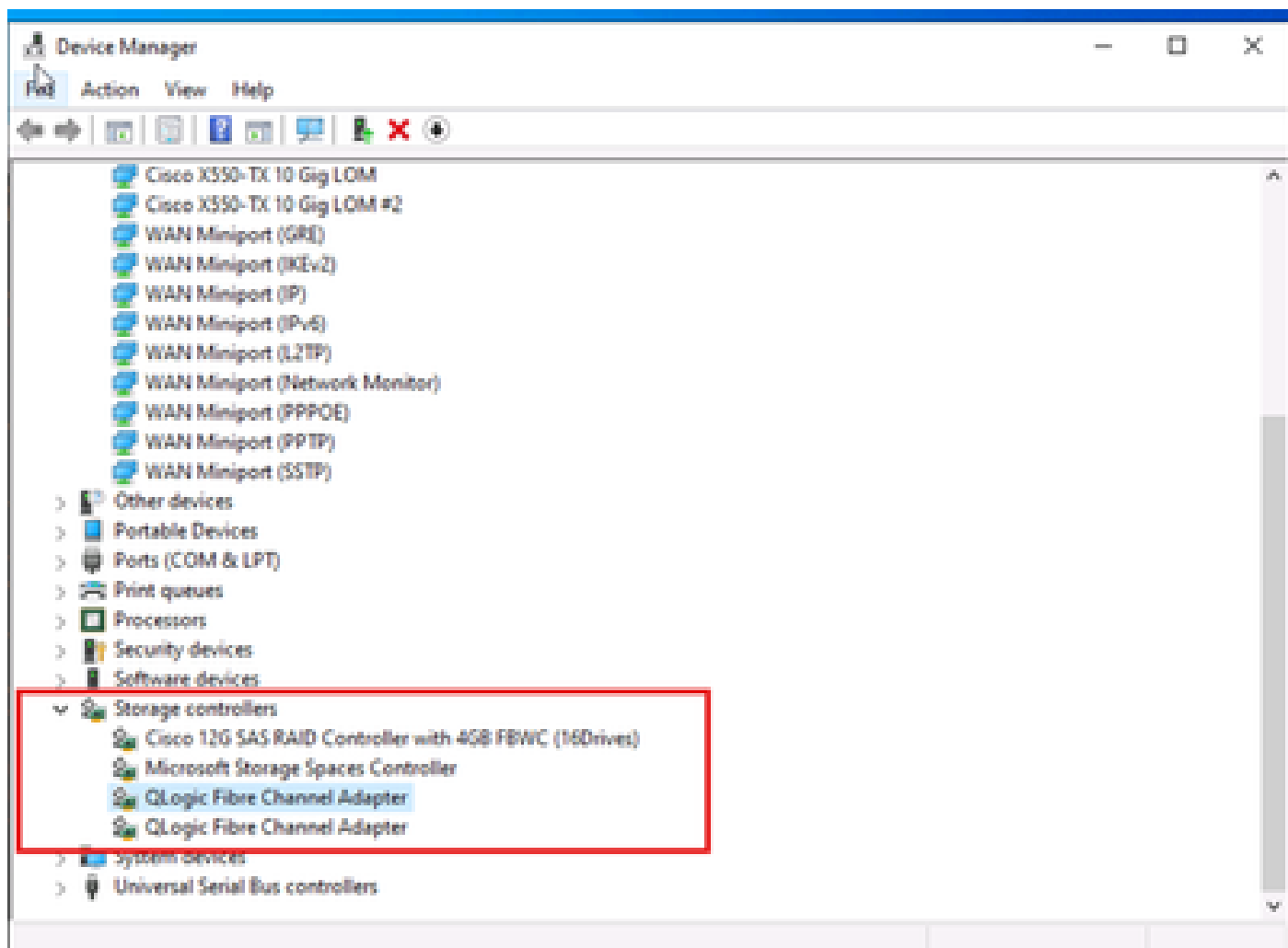
- Validate the compliant drivers from the Cisco UCS [Hardware Compatibility List](#) for the specific Hardware / Software / Firmware combination.
- Verify the current driver details of the Qlogic HBA(s).

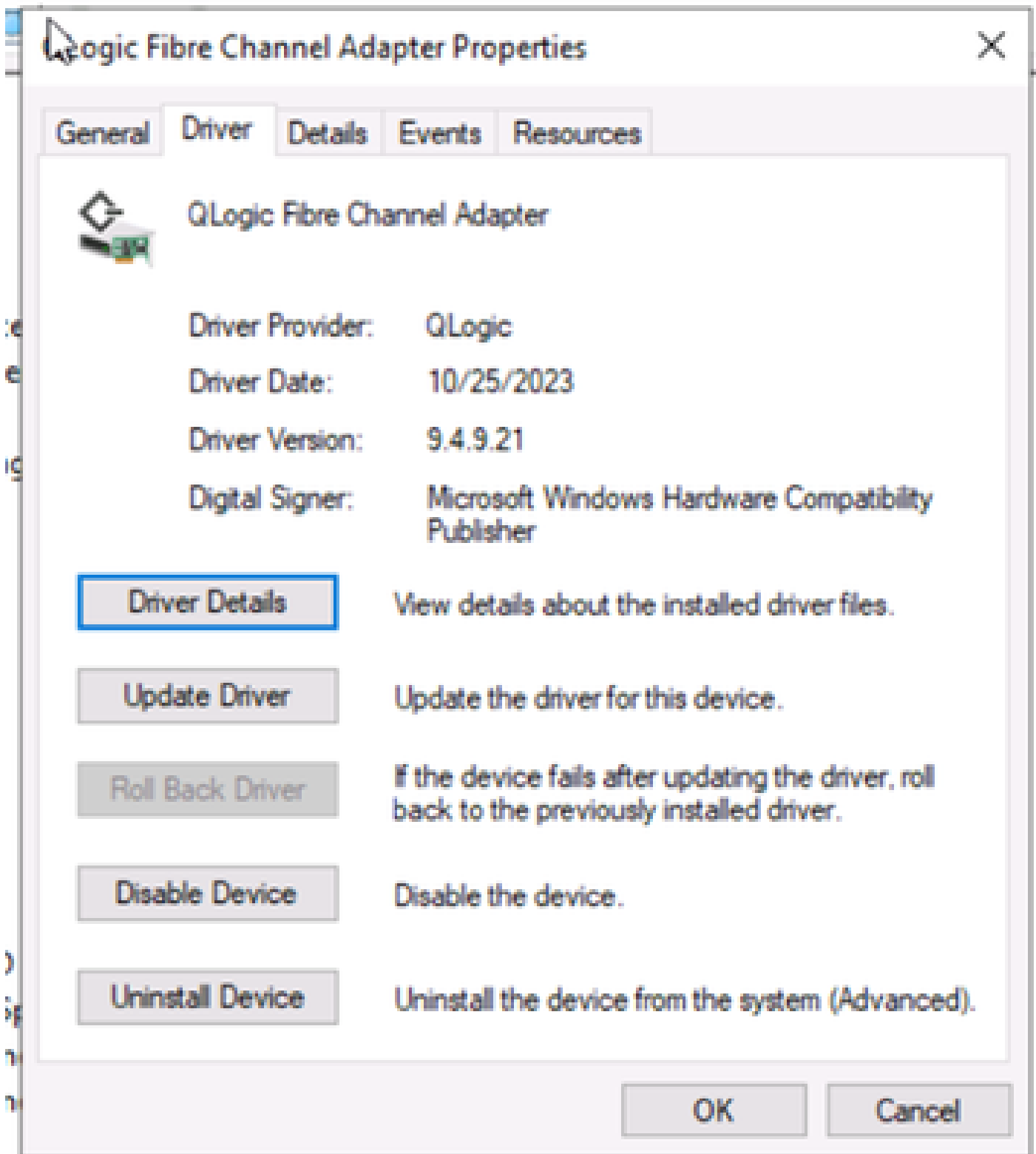
For Windows:

- Open **Device Manager**.

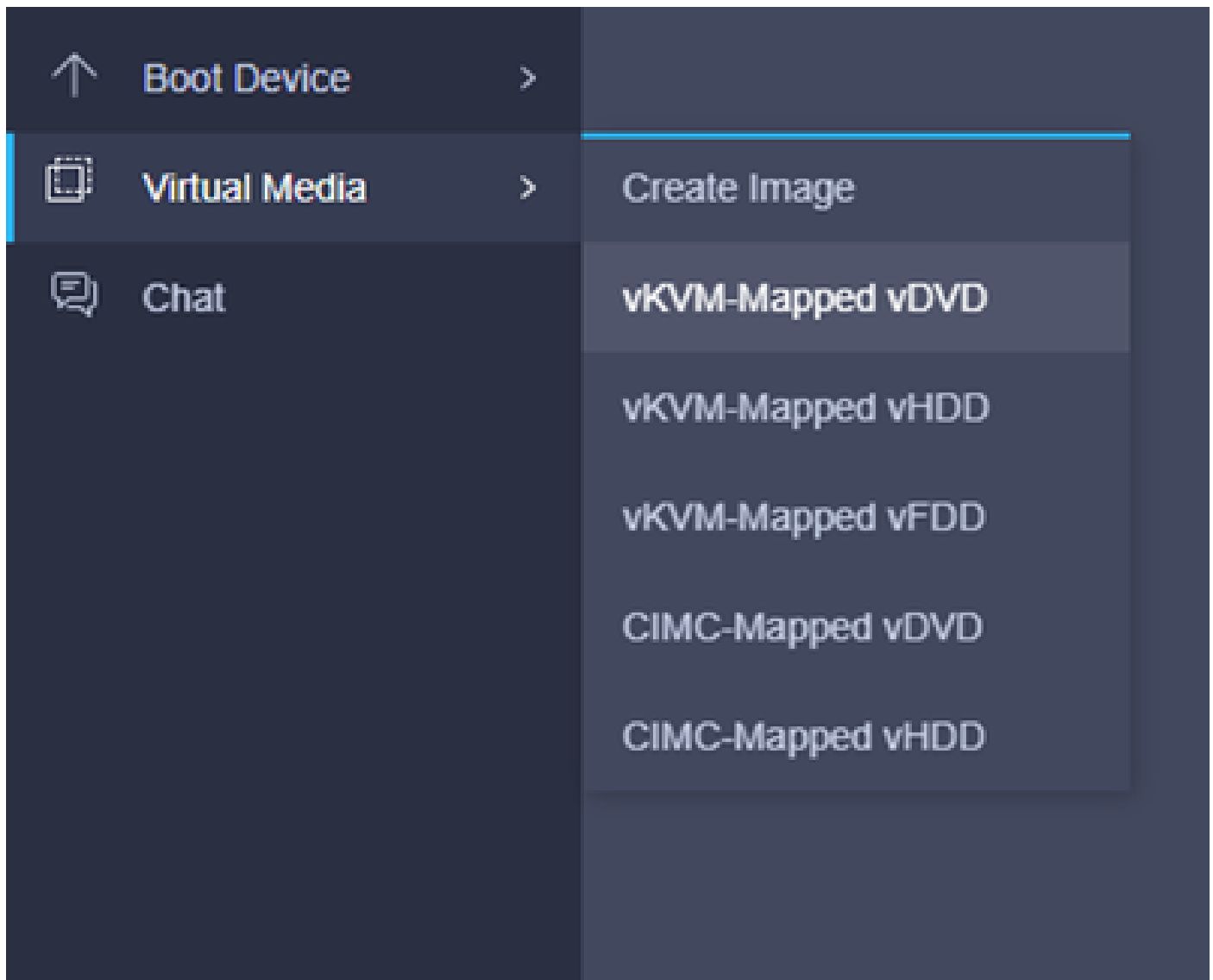


Expand the **Storage Controllers** and select the Qlogic Fabric Channel Adapter.

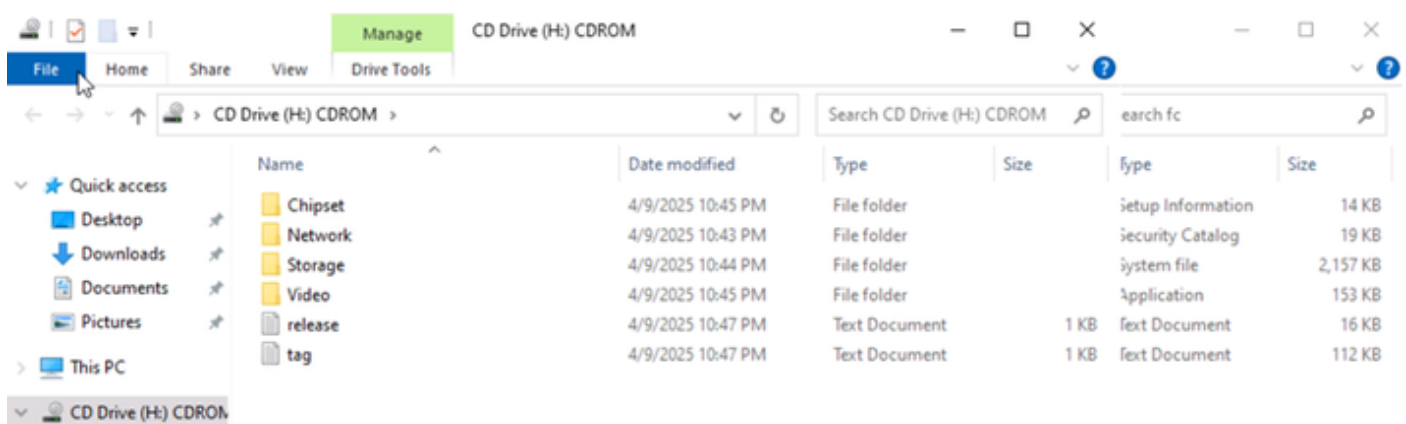




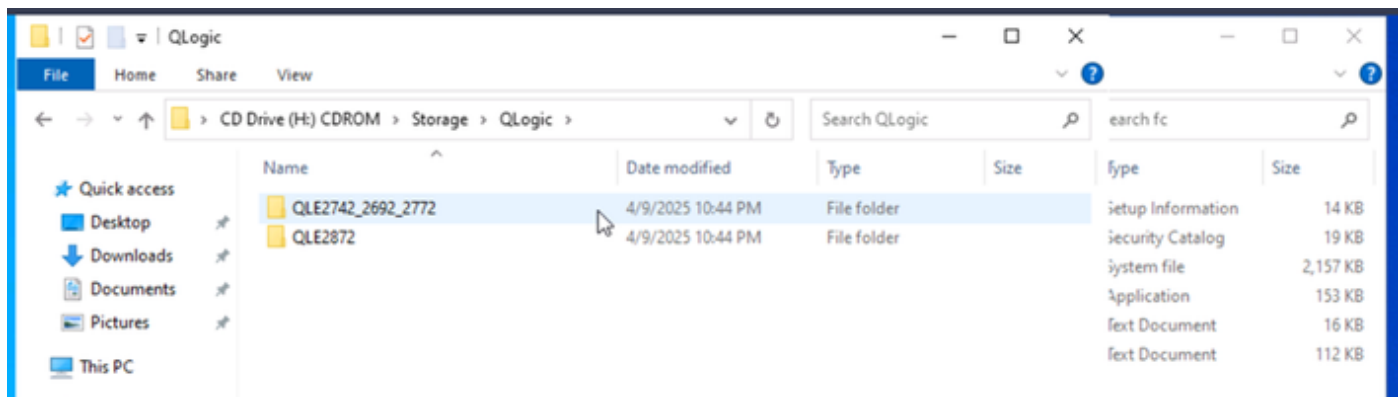
- Download drivers from [Cisco Software Central](#).
- Download the driver ISO to the Windows server.
- Map the ISO file: In this the example, vMedia mapped to vKVM was used to copy the contents to the OS. If the OS has internet access, you can download the driver ISO directly. Other options to transfer the file as NFS, TFTP, SCP, and so on, can be utilized.



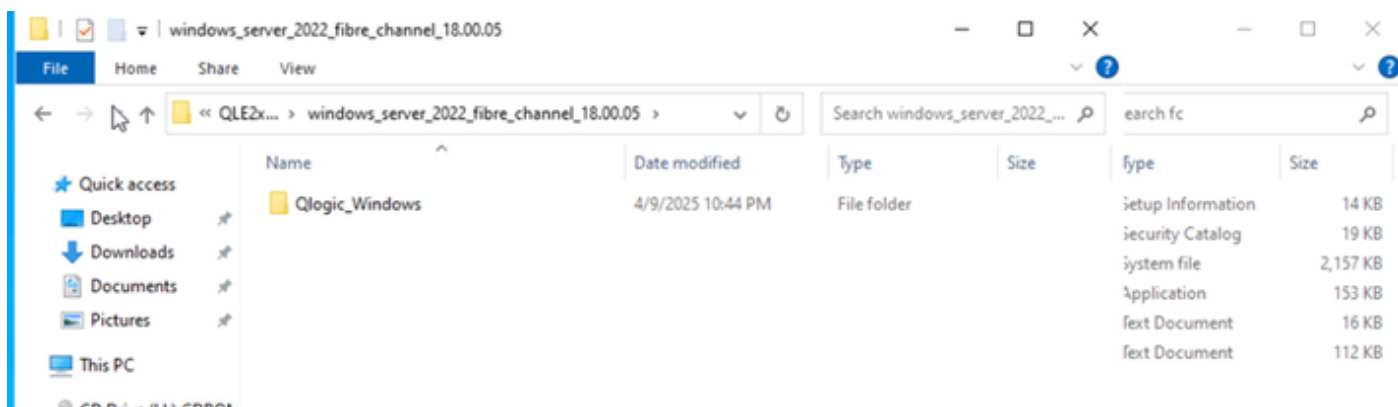
- Locate the storage folder:



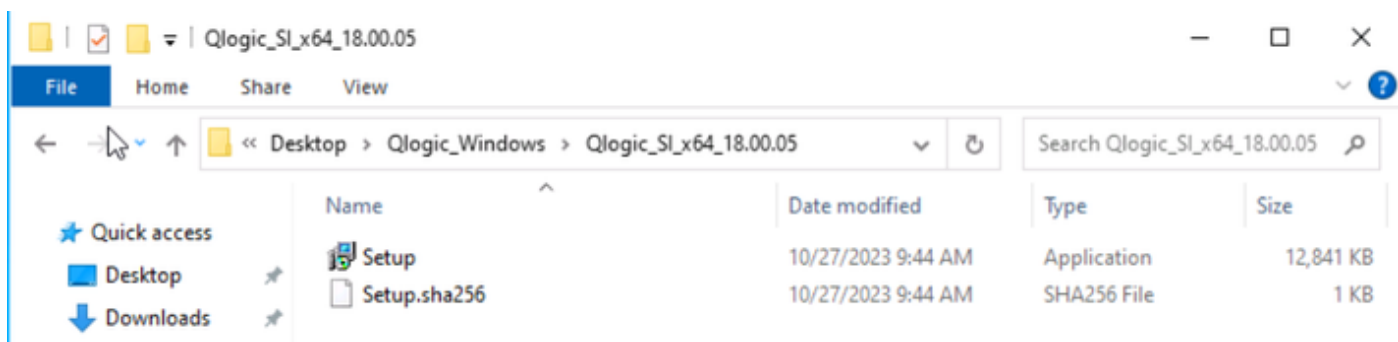
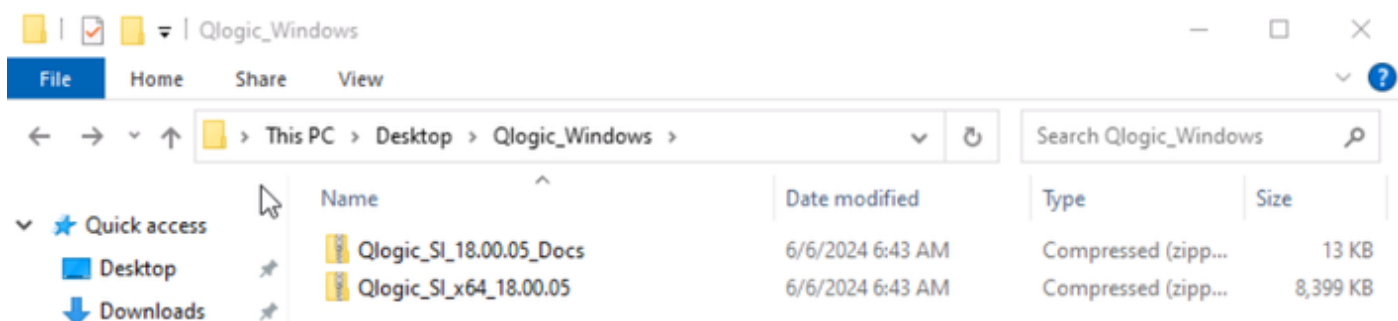
- Choose the appropriate folder with the intended Qlogic Adapter. For this example, the QLE2692.



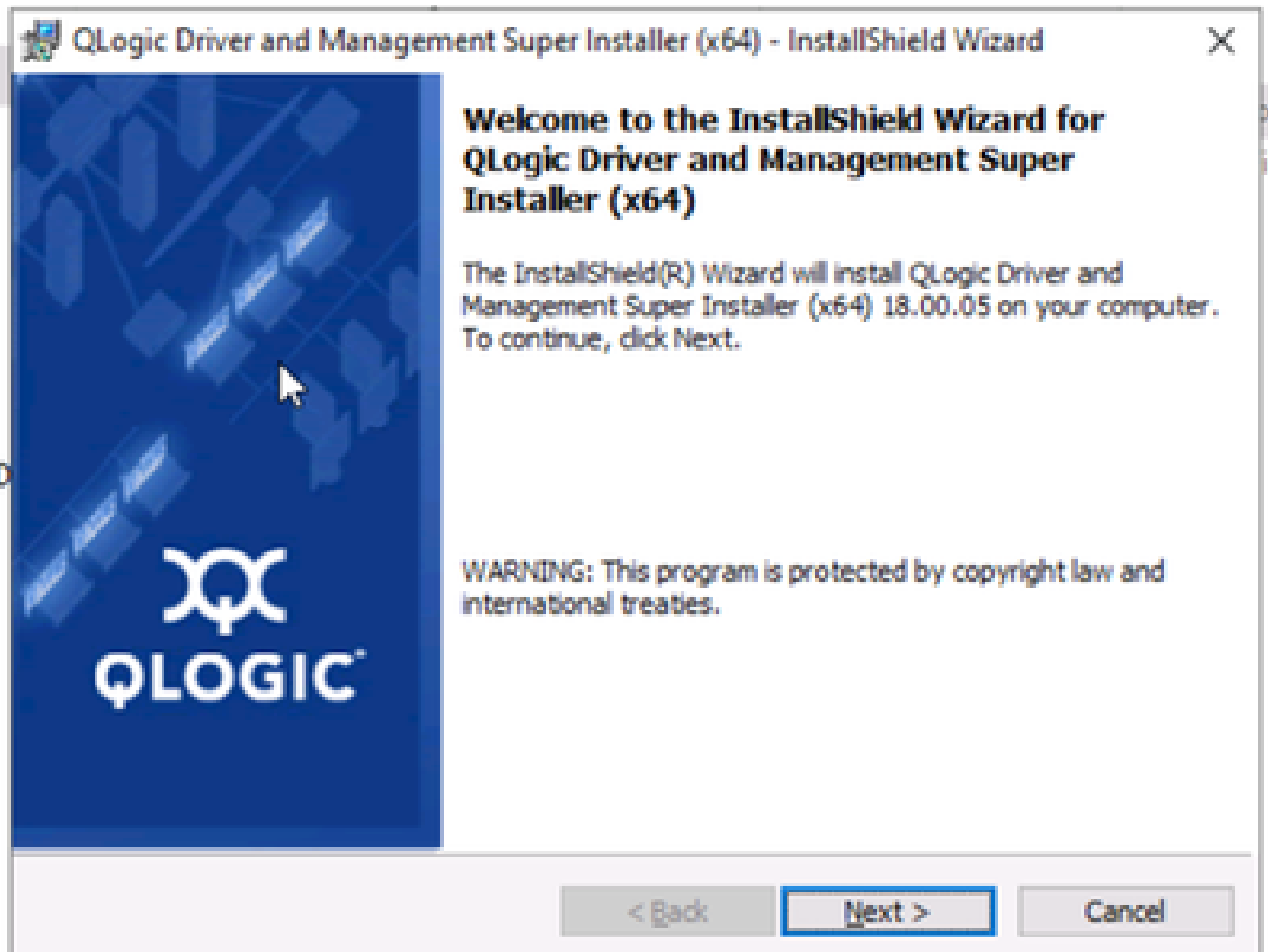
- Copy the relevant folder, in this example the Qlogic_Windows folder, to a known location.



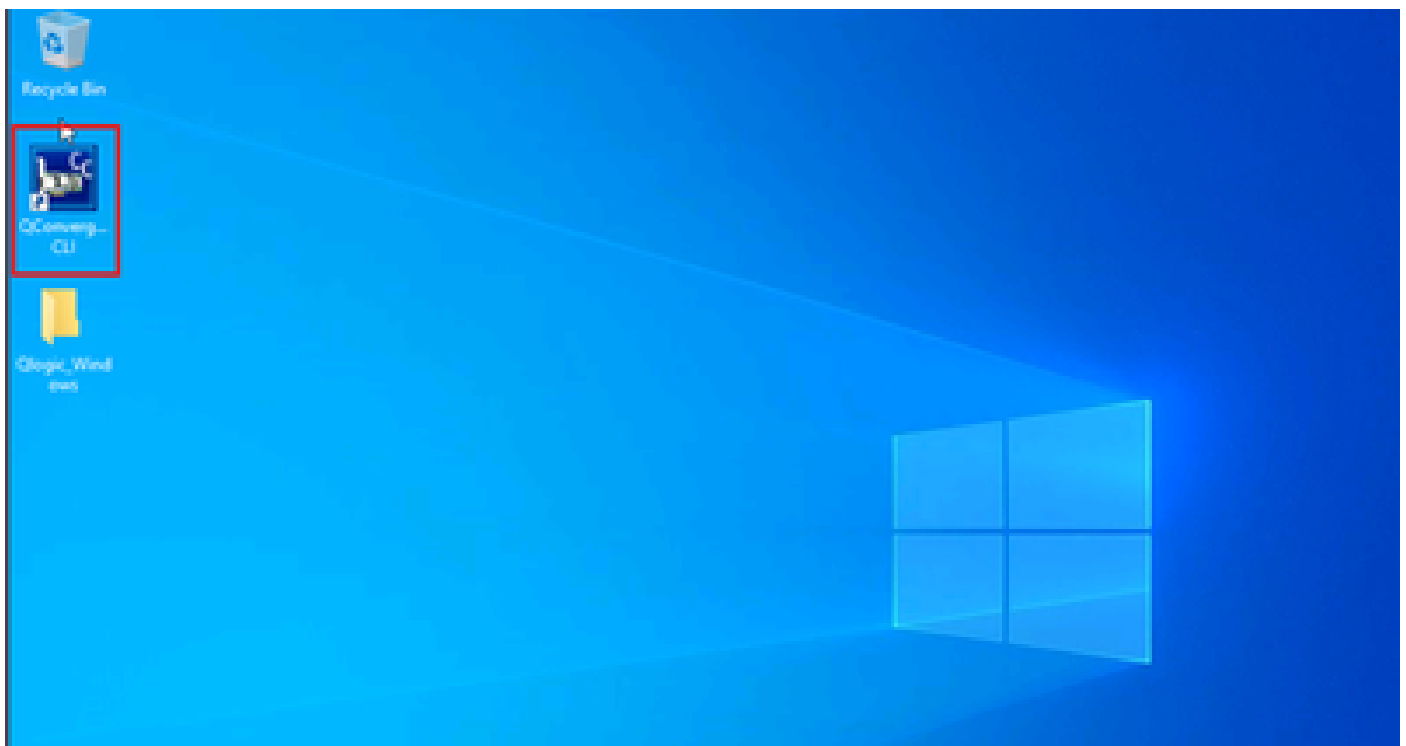
- Uncompress the file. Two folders are available; one contains the relevant documentation and the other folder contains the necessary files for the upgrade..



- Execute the Setup Wizard and continue.



The executable "QConvergence Console CLI" then becomes available to execute different tasks into the Qlogic Card.



```
QConvergeConsole CLI
Using config file: C:\Program Files\QLogic Corporation\QConvergeConsoleCLI\qauccli.cfg
Scanning QLogic FC HBA(s) and device(s), please wait...

QConvergeConsoleCLI
CLI - Version 3.0.0 (Build 4)

Main
1: Adapter Information
2: Adapter Configuration
3: Adapter Updates
4: Adapter Diagnostics
5: Monitoring
6: Universal SAN Congestion Mitigation (USCM)
7: Refresh
8: Help
9: Exit

Please Enter Selection: 1

QConvergeConsoleCLI
CLI - Version 3.0.0 (Build 4)

FC Adapter Information
```

Extracting the drivers

Using Windows CMD, change directory to the location of the setup.exe application for ease of use.

```
C:\Users\Administrator>cd \Users\Administrator\Desktop\Qlogic_Windows\Qlogic_SI_x64_18.00.05
```

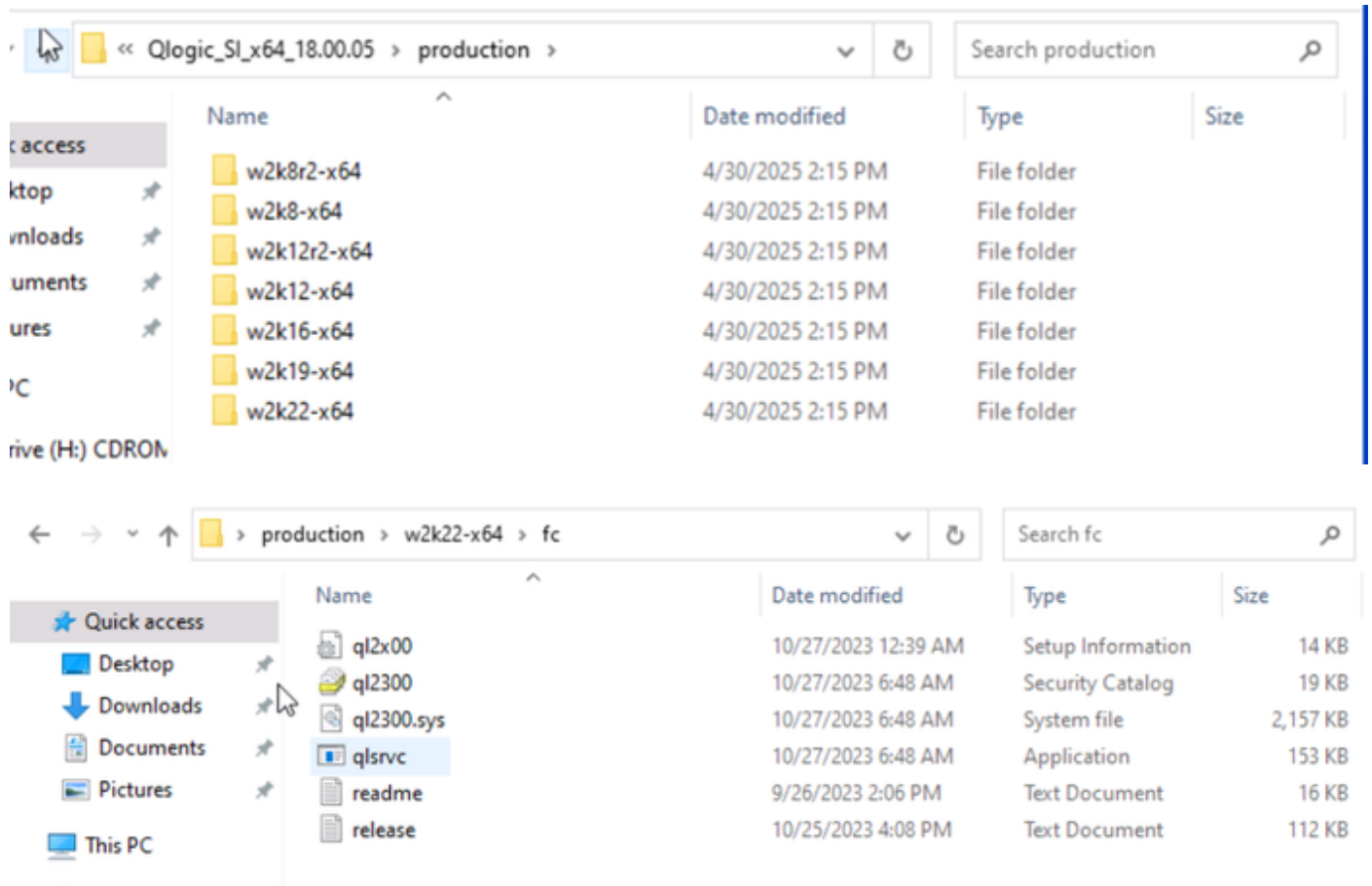
- Run this command and extract the drivers to a specific location.

Start /wait Setup.exe /a \$msipath\$ EXTRACTDRIVERS=1 TARGETDIR="<Extract directory location>"

```
C:\Users\Administrator\Desktop\Qlogic_Windows\Qlogic_SI_x64_18.00.05>
C:\Users\Administrator\Desktop\Qlogic_Windows\Qlogic_SI_x64_18.00.05>Start /wait Setup.exe /a $msipath$ EXTRACTDRIVERS=1 T
ARGETDIR="C:\Users\Administrator\Desktop\Qlogic_Windows\Qlogic_SI_x64_18.00.05"
```

After extracted, a folder named "production" is created containing the drivers.

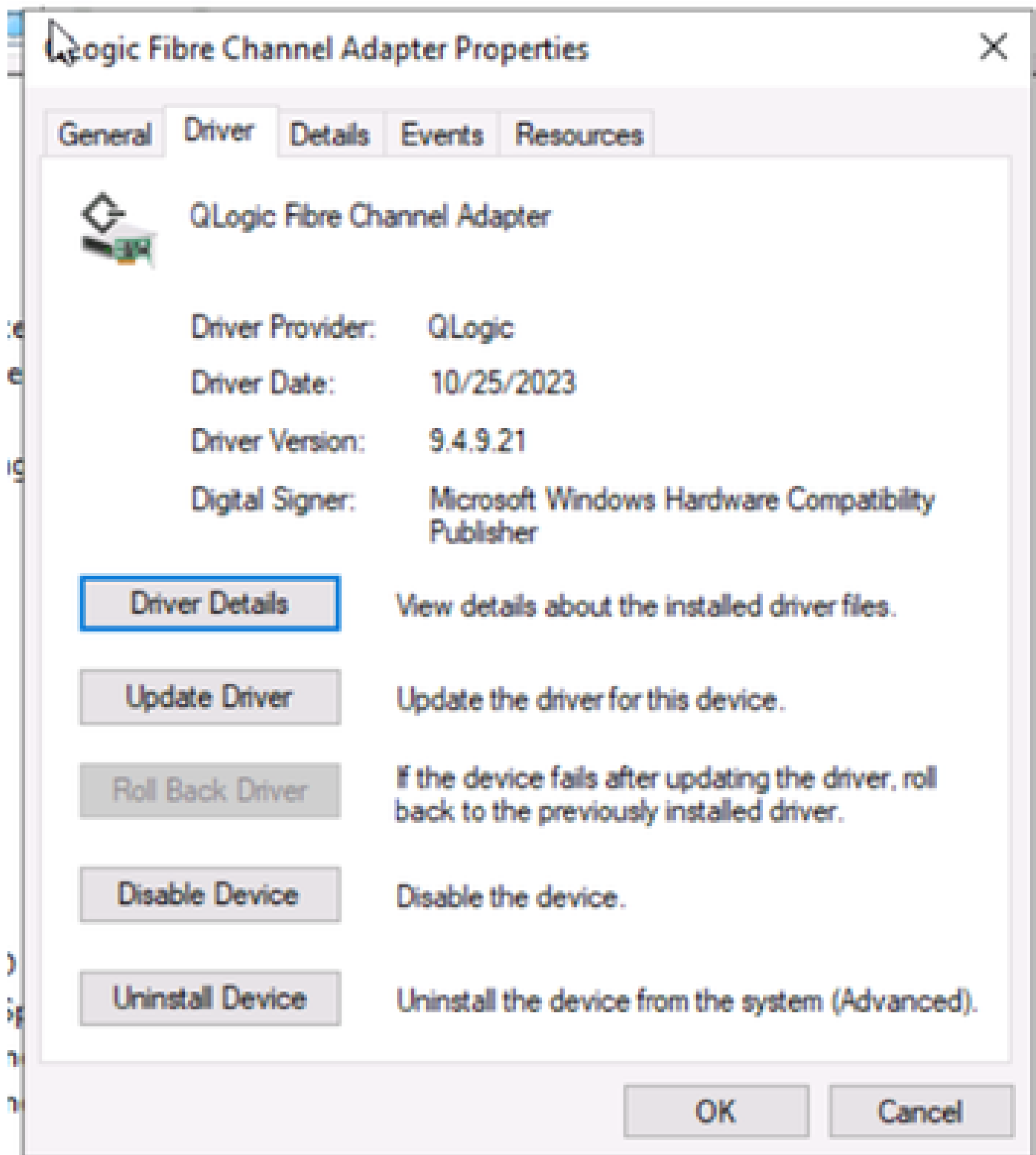
Qlogic_Windows > Qlogic_SI_x64_18.00.05 >					Search Qlogic_SI_x64_18.00.05	
Access	Name	Date modified	Type	Size		
op	production	4/30/2025 2:15 PM	File folder			
loads	Setup	10/27/2023 9:44 AM	Application	12,841 KB		
ments	Setup.sha256	10/27/2023 9:44 AM	SHA256 File	1 KB		



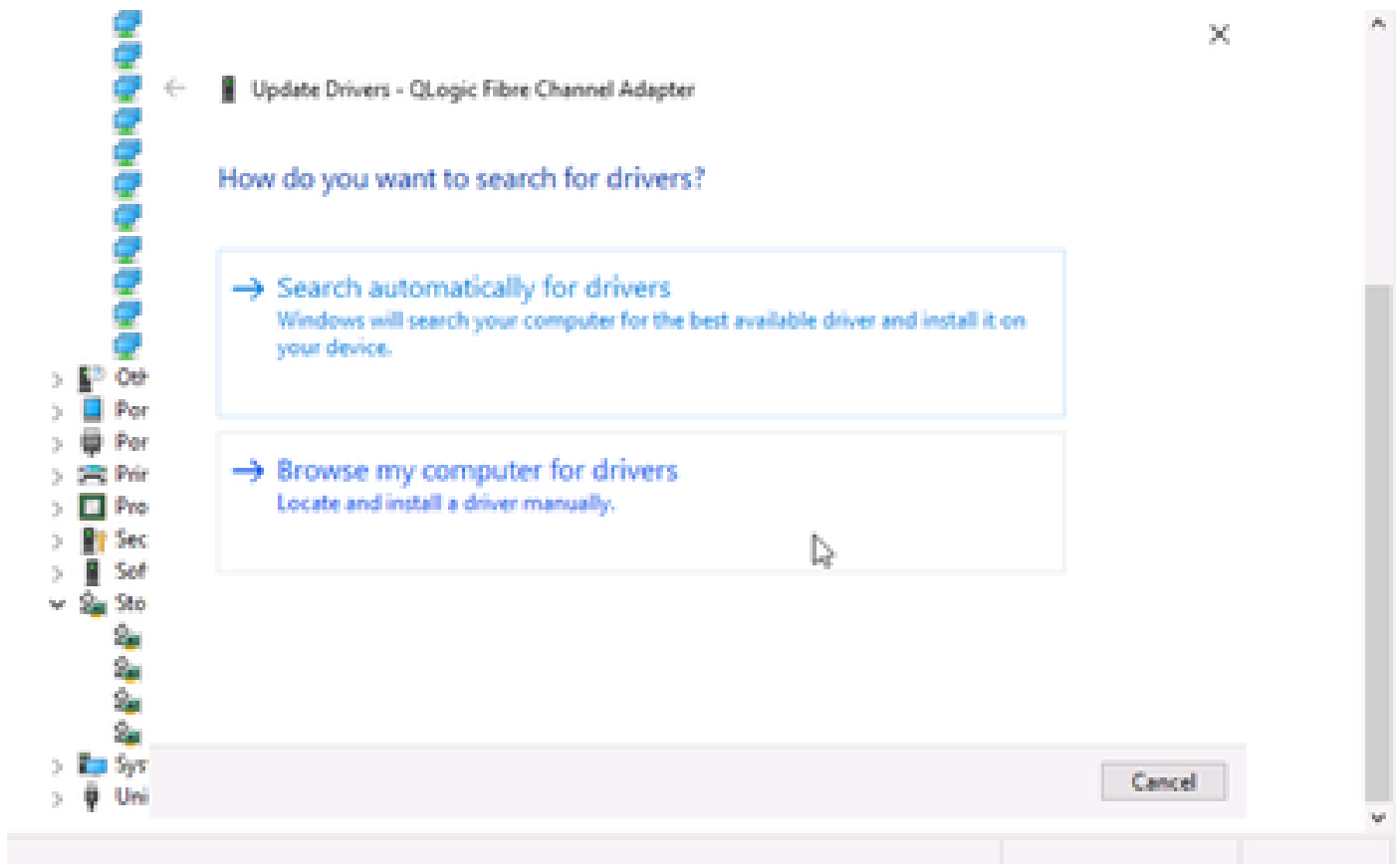
Update the Drivers

After the drivers files have been extracted, proceed with upgrade.

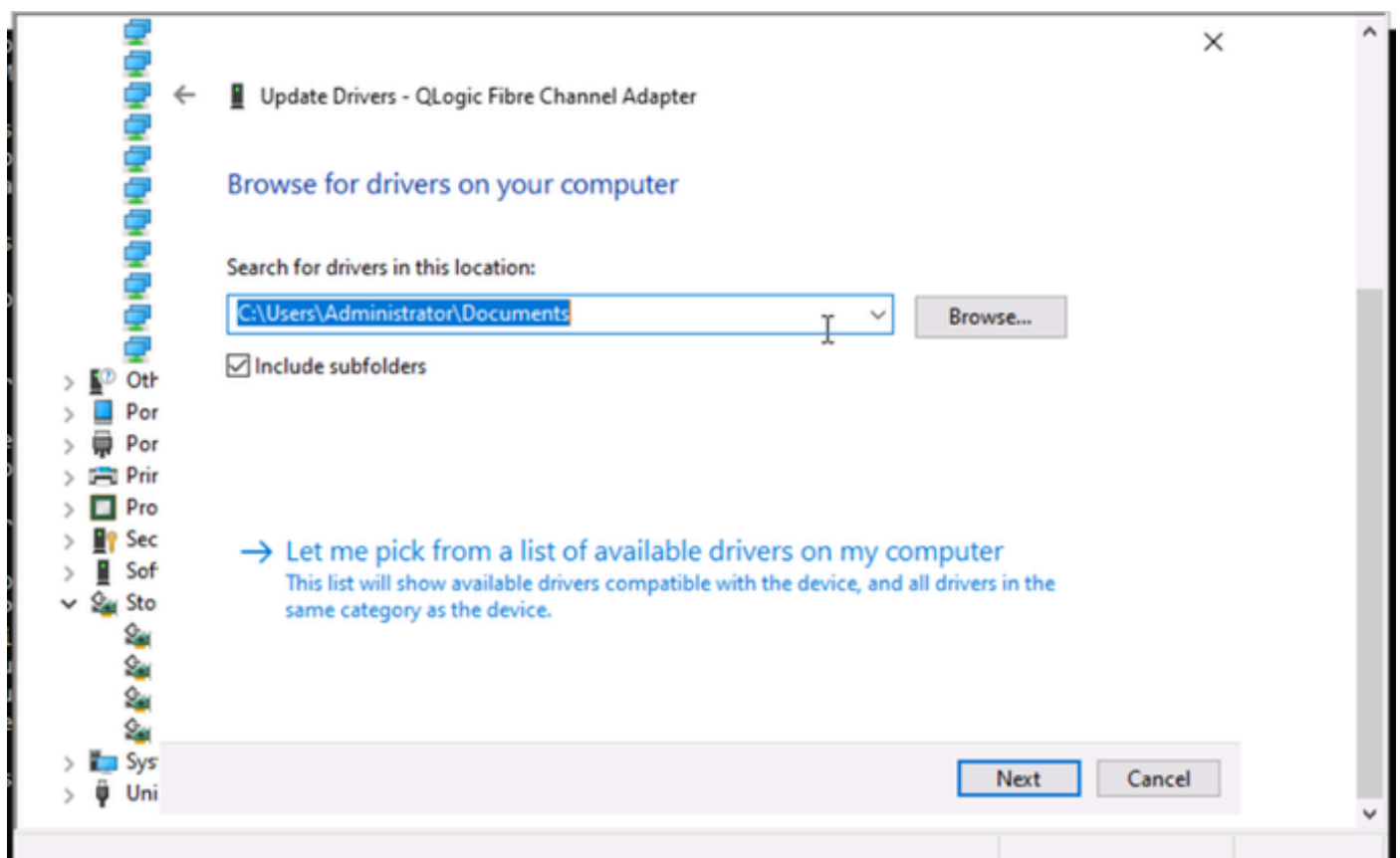
Open **Device Manager**, expand the **Storage Controllers**, select the **Qlogic Fabric Channel Adapter** and click **Update Driver**.



- Select "Browse my computer for drivers".




- Choose the second option "Let me pick from a list..."



- Click on "Have Disk..."



← Update Drivers - QLogic Fibre Channel Adapter


 Select the device driver you want to install for this hardware.




Select the manufacturer and model of your hardware device and then click Next. If you have a disk that contains the driver you want to install, click Have Disk.

☒ Show compatible hardware

Model

 QLogic Fibre Channel Adapter Version: 9.4.2.103 [8/19/2015]

 QLogic Fibre Channel Adapter Version: 9.4.9.21 [10/25/2023]



This driver is digitally signed.

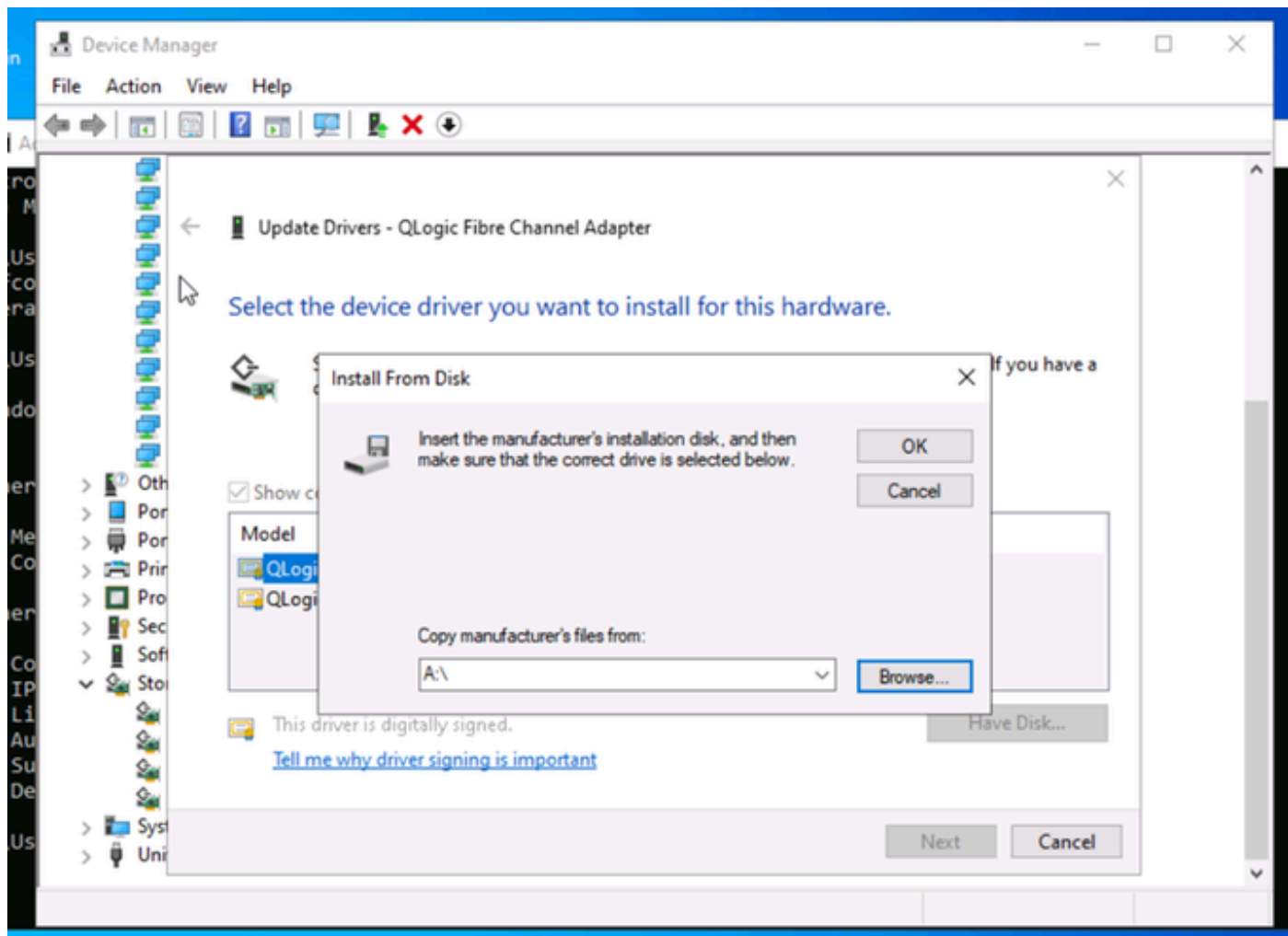
[Tell me why driver signing is important](#)

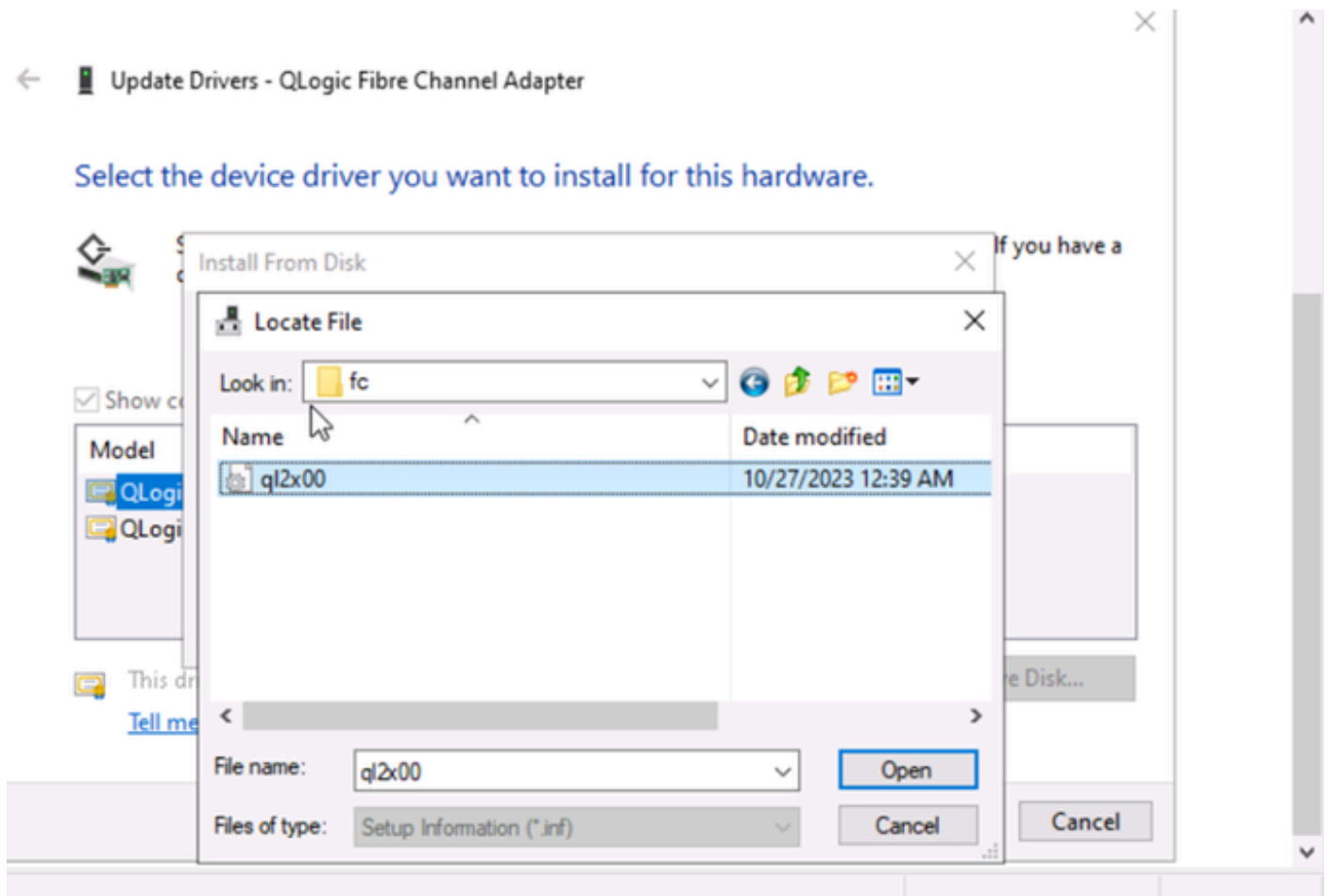
Have Disk...

Next

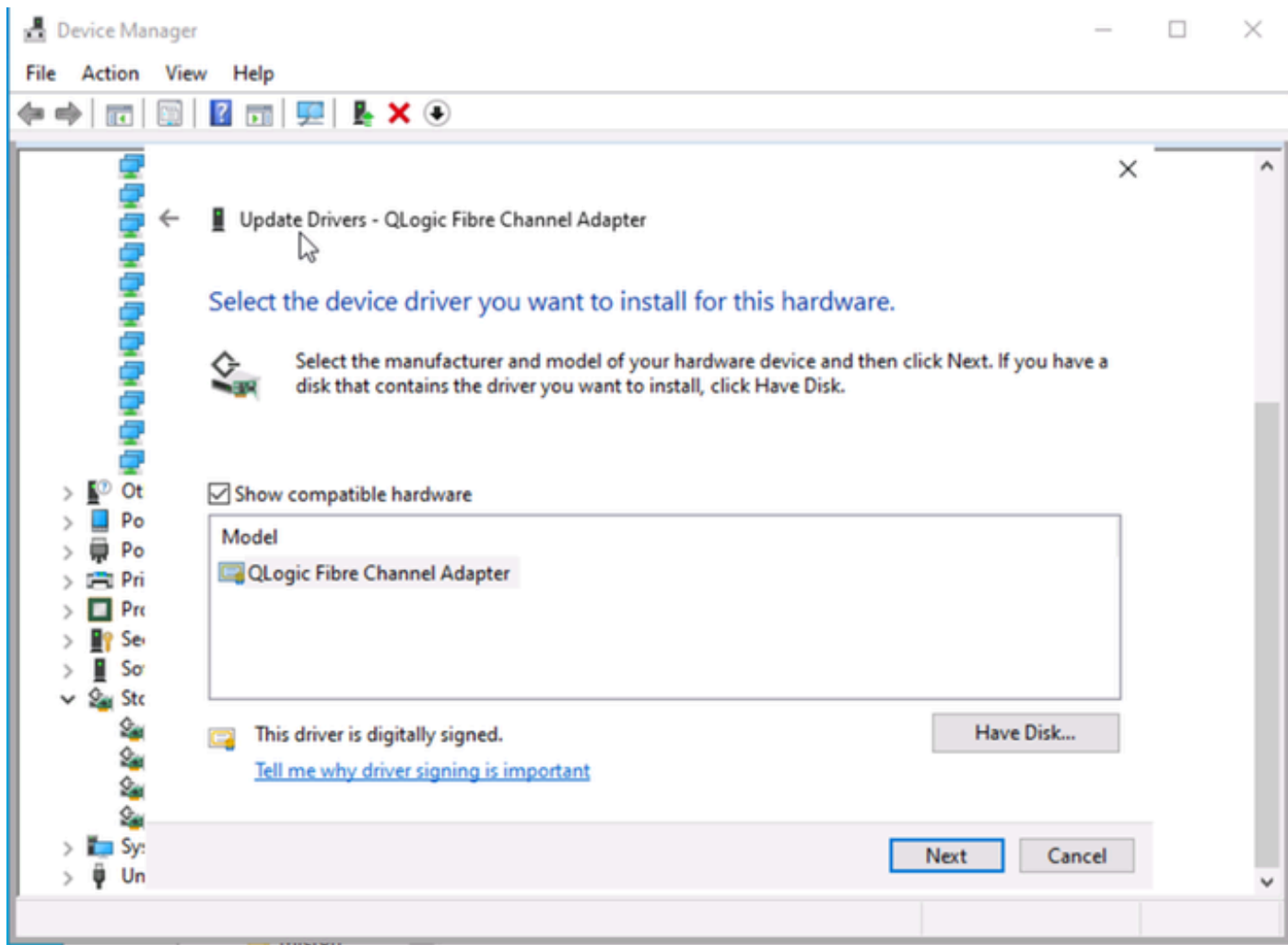
Cancel

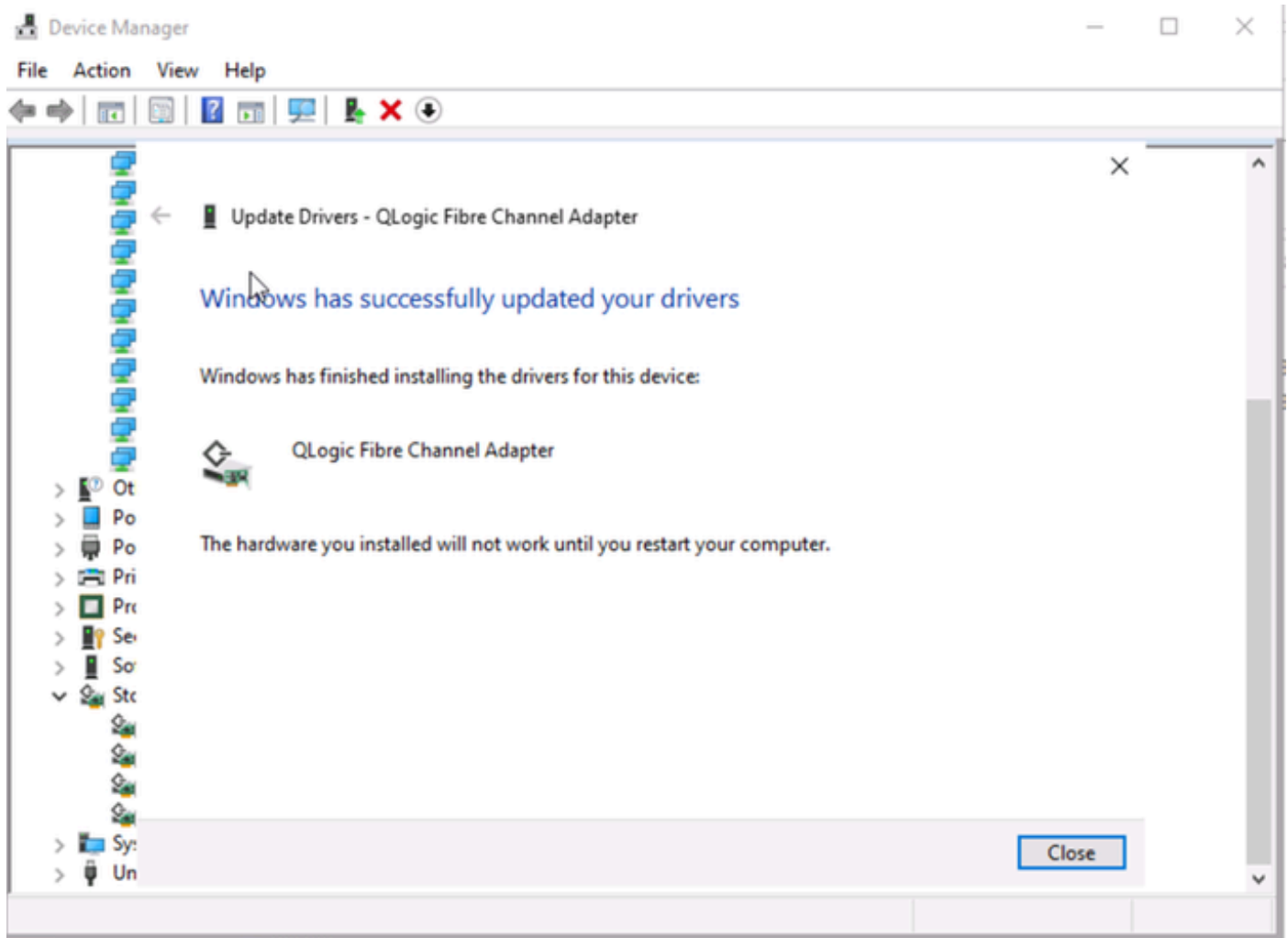
- Browse to the location where drivers are and choose the new driver:





- Click **Next** and complete the installation.





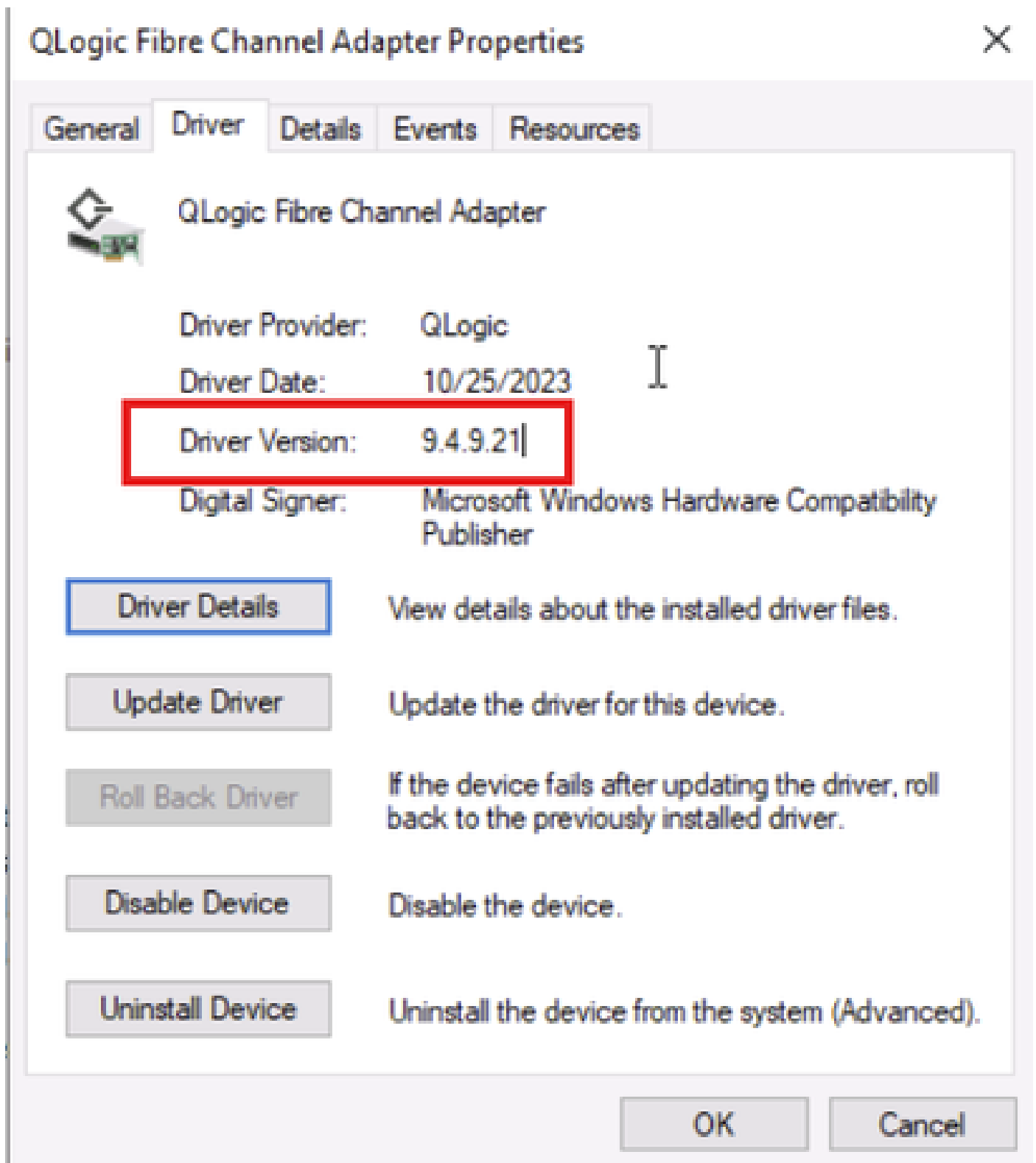
- Reboot server for changes to take effect.

Verify

There are 2 methods to validate the installed drivers:

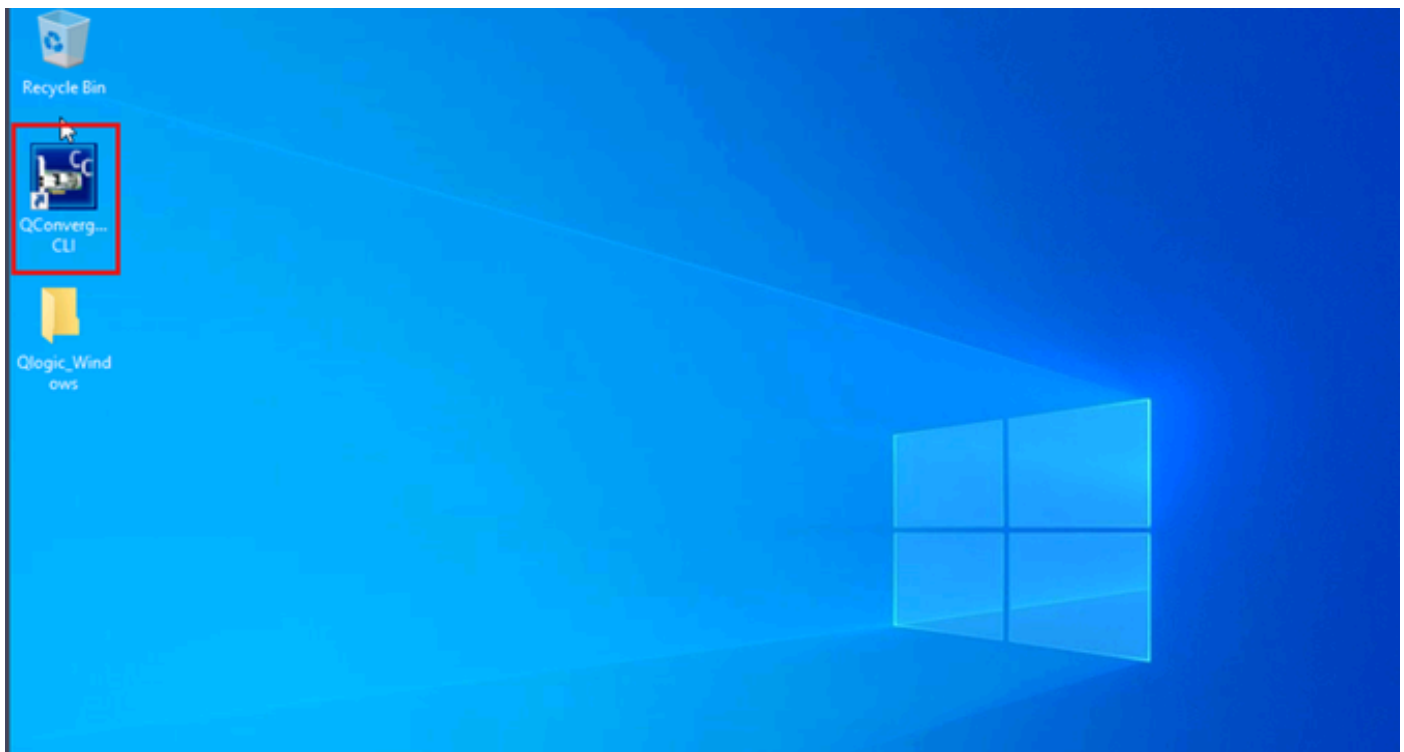
1. Device manager:

Open **Device Manager**, expand the **Storage Controllers**, and select **Qlogic Fabric Channel Adapter**.



2. Qlogic CLI:

Options 1 and 3 provide an overview about the interface status, current firmware, and driver version/updates.



```
QConvergeConsole CLI
Using config file: C:\Program Files\QLogic Corporation\QConvergeConsoleCLI\qauccli.cfg
Scanning QLogic FC HBA(s) and device(s), please wait...

QConvergeConsoleCLI
CLI - Version 3.0.0 (Build 4)

Main
1: Adapter Information
2: Adapter Configuration
3: Adapter Updates
4: Adapter Diagnostics
5: Monitoring
6: Universal SAN Congestion Mitigation (USCM)
7: Refresh
8: Help
9: Exit

Please Enter Selection: 1

QConvergeConsoleCLI
CLI - Version 3.0.0 (Build 4)

FC Adapter Information
```

Upgrade process is concluded.

References and useful links:

- <https://www.cisco.com/c/en/us/support/docs/servers-unified-computing/ucs-manager/116349-technote-product-00.html>