

# Understand how to Disable IPv6 for Umbrella

## Contents

---

### [Introduction](#)

### [Prerequisites](#)

#### [Requirements](#)

#### [Components Used](#)

### [Overview](#)

### [Mac OSX](#)

### [Windows](#)

#### [Windows 7, 8.1 and 10](#)

#### [Policy Editor](#)

#### [Windows 8](#)

---

## Introduction

This document describes how to disable IPv6 for Umbrella.

## Prerequisites

### Requirements

There are no specific requirements for this document.

### Components Used

The information in this document is based on Cisco Umbrella.

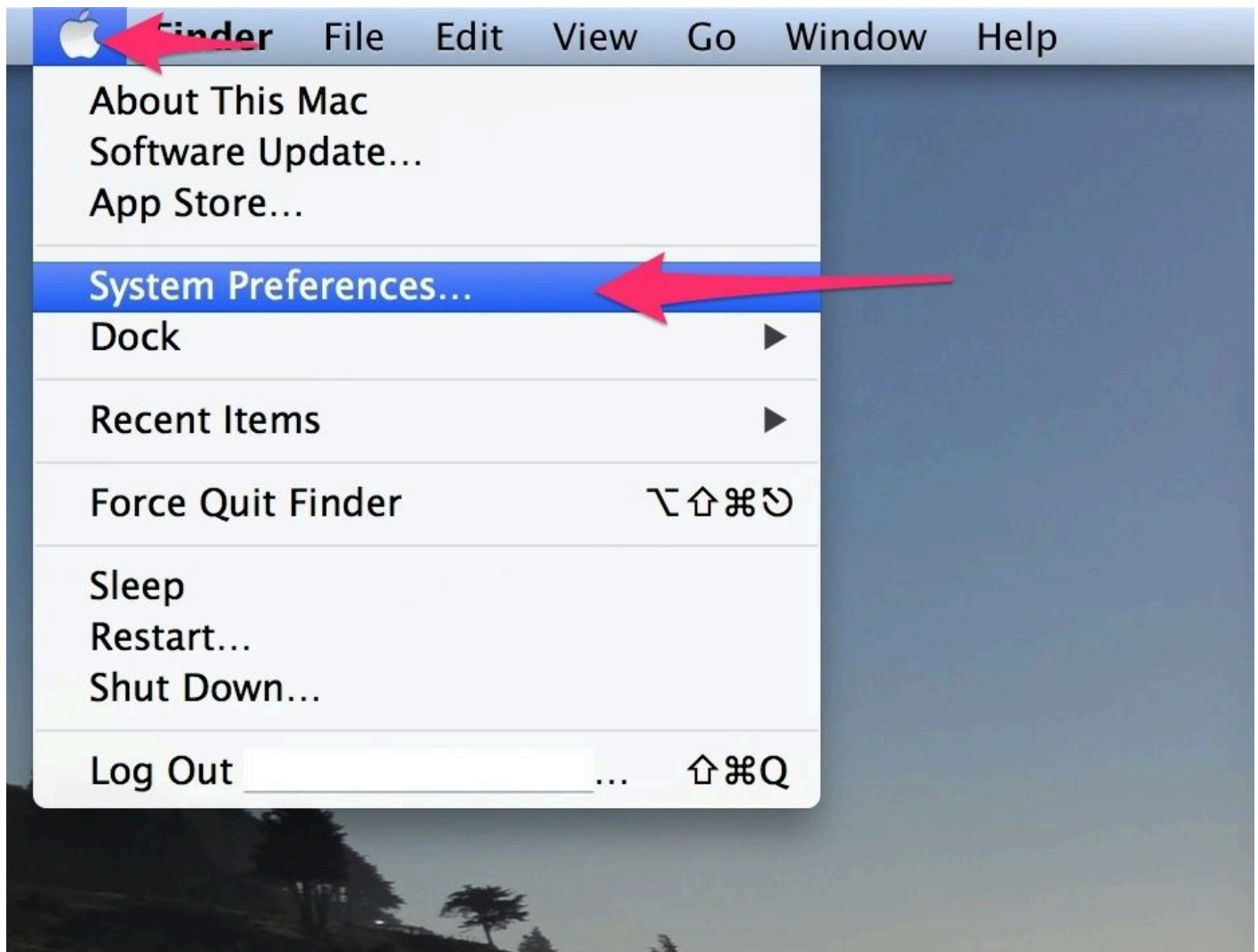
The information in this document was created from the devices in a specific lab environment. All of the devices used in this document started with a cleared (default) configuration. If your network is live, ensure that you understand the potential impact of any command.

## Overview

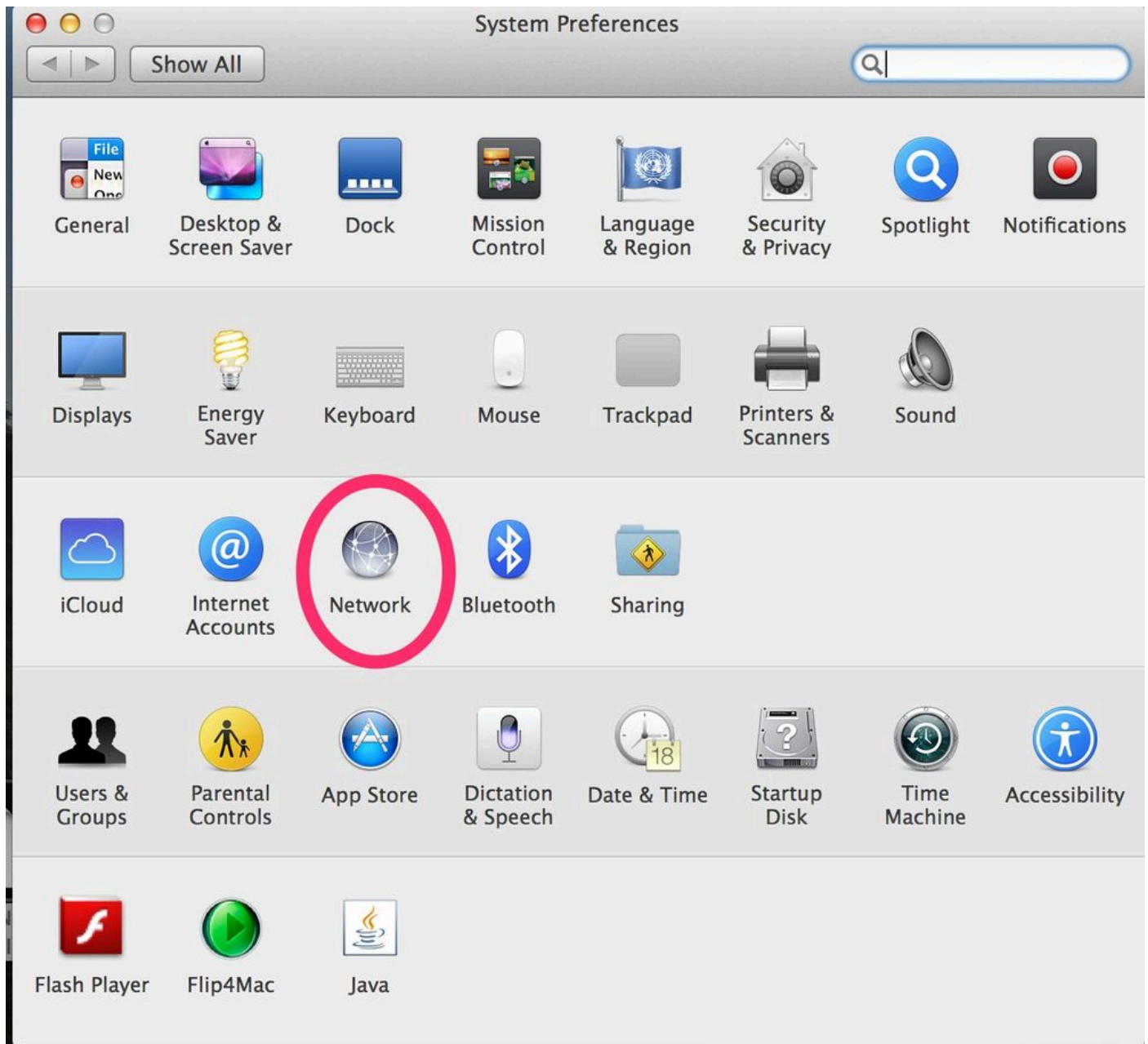
There are times when functionality in Umbrella is not available when IPv6 is enabled. In some cases, you can be asked to disable IPv6 in order to get filtering through Umbrella's service. To disable IPv6 on your computer, complete the steps based on your operating system.

## Mac OSX

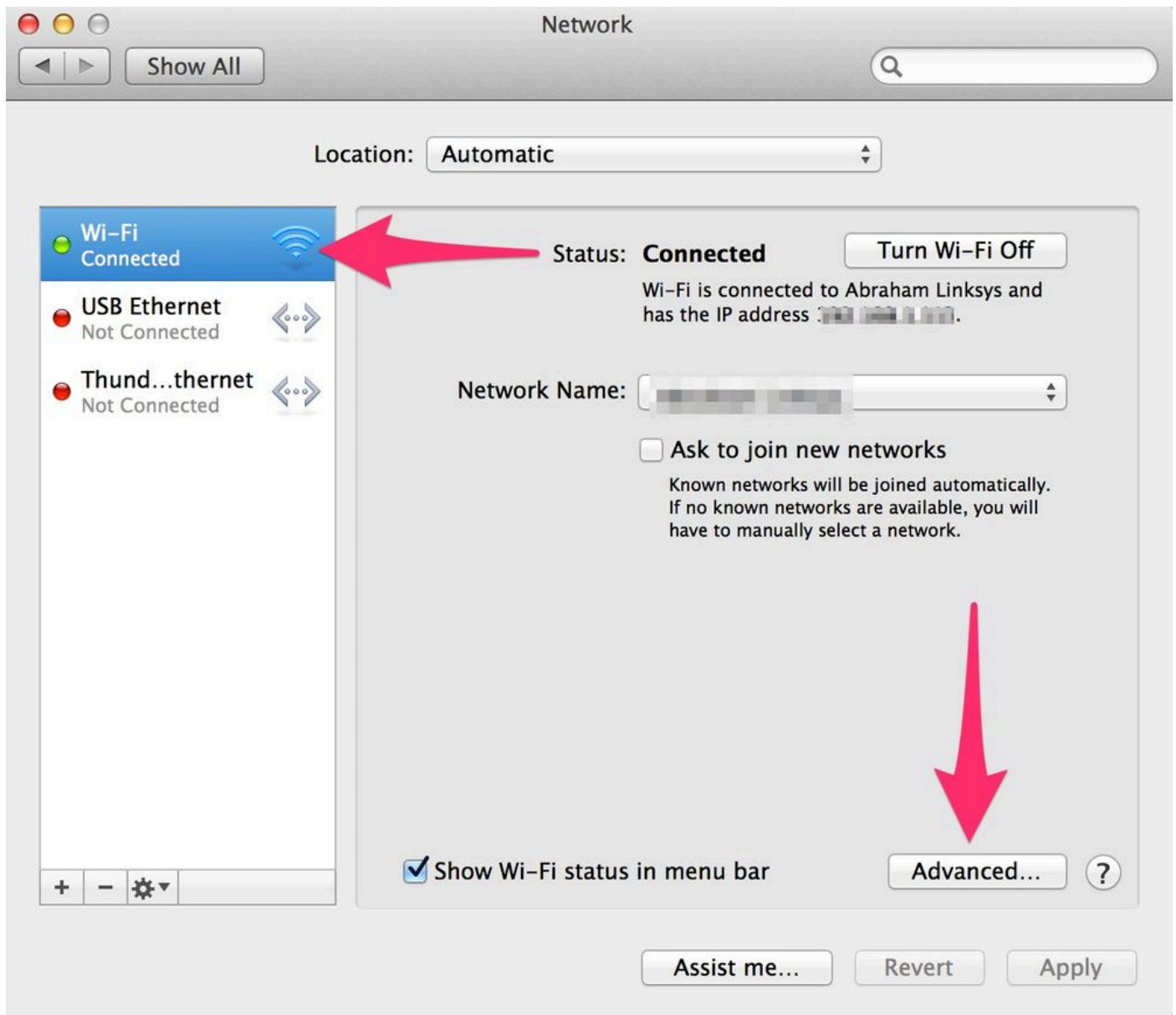
1. Go to **System Preferences**.



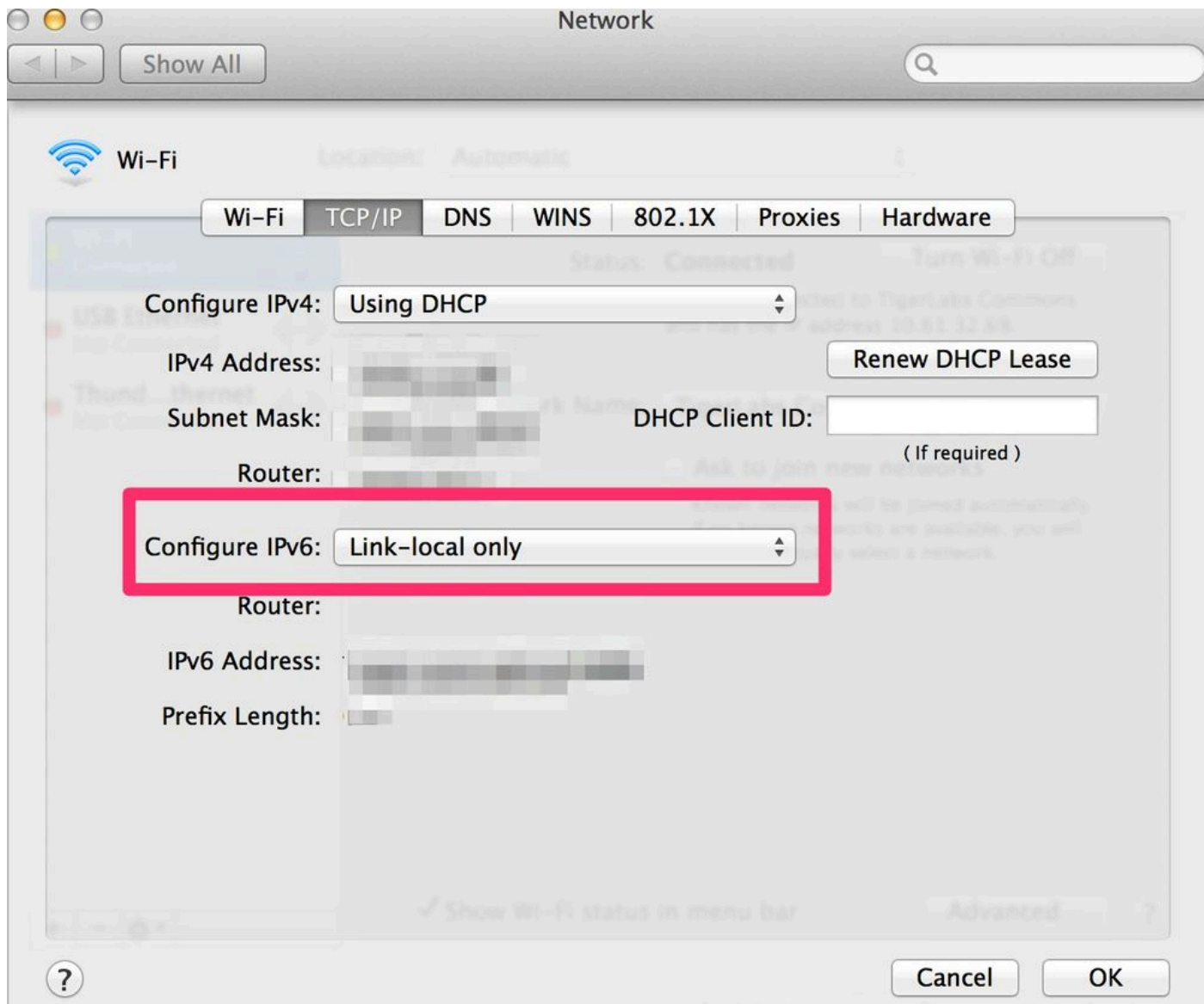
2. Select **Network**.



3. Select the first connection in your list and select **Advanced**.



4. Select Local-Link only or off for Configure IPv6.





**Note:** Depending on the version of OSX, this can be turned off and just set to Local-Link only.

---

## Windows

There are two options for disabling IPv6 in Windows. The first is to disable IPv6 completely, and the second is to disable it on your current network device. It is preferable to disable it via method 2. However, method 1 is easier to accomplish.

1. Disable completely: Microsoft has made an easy fix for this. Please see this [Microsoft Support page](#) and download the "Disable IPv6" Microsoft FixIt. In the event that this is needed once again in the future, there is also an "Enable IPv6 FixIt" available for download.

2. Disable IPv6 on the network connection.

These instructions cover Windows 7, 8 and 10.

### Windows 7, 8.1 and 10

## **Policy Editor**

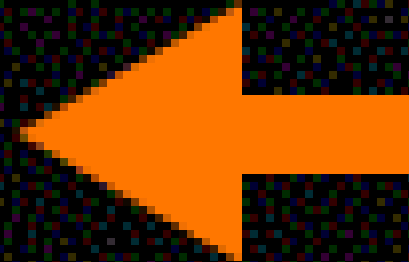
1. Select the **Start menu > Control Panel**.

MUSIC

Computer



Control Panel



Devices and Printers

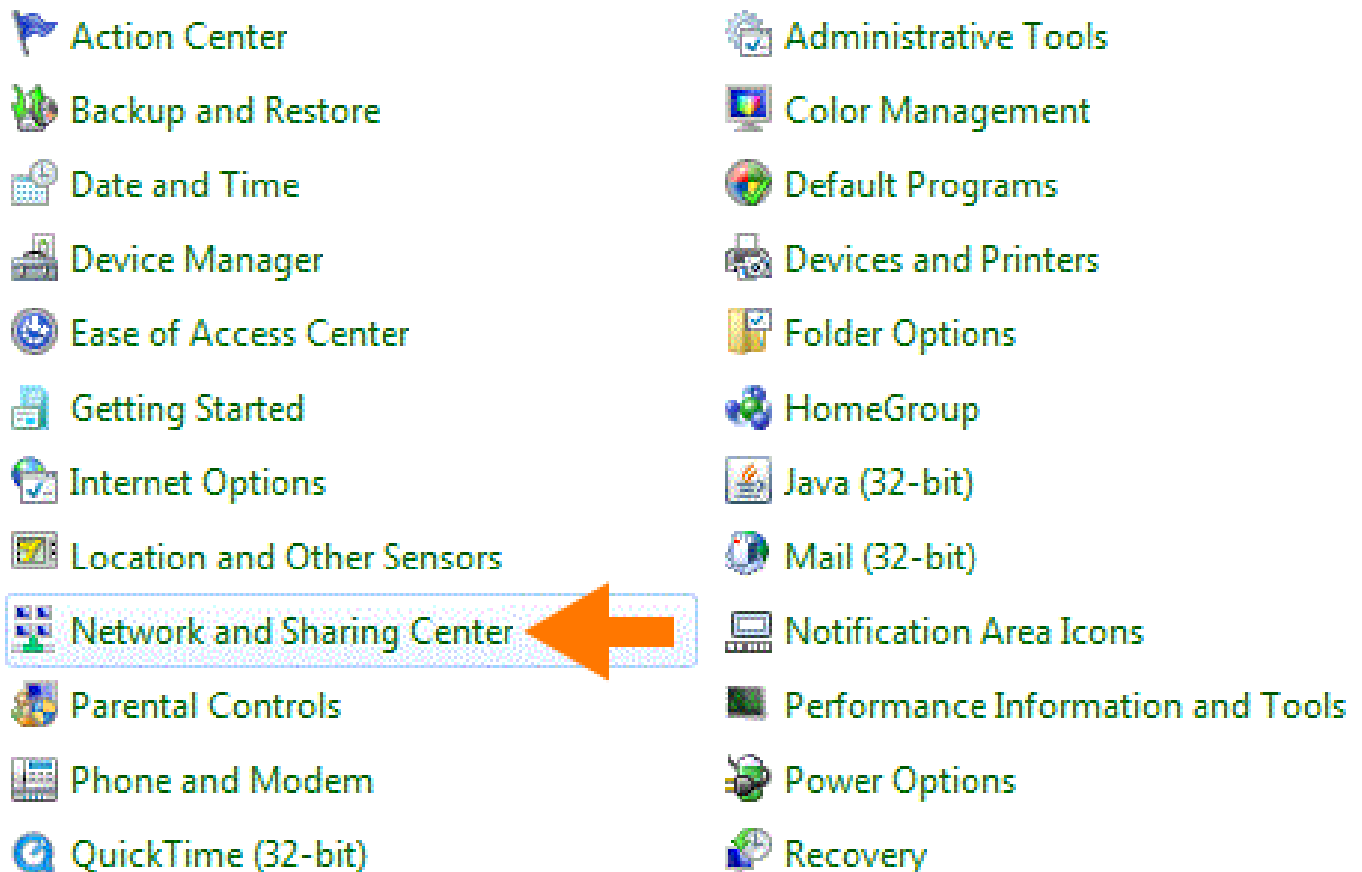
Default Programs

Administrative Tools



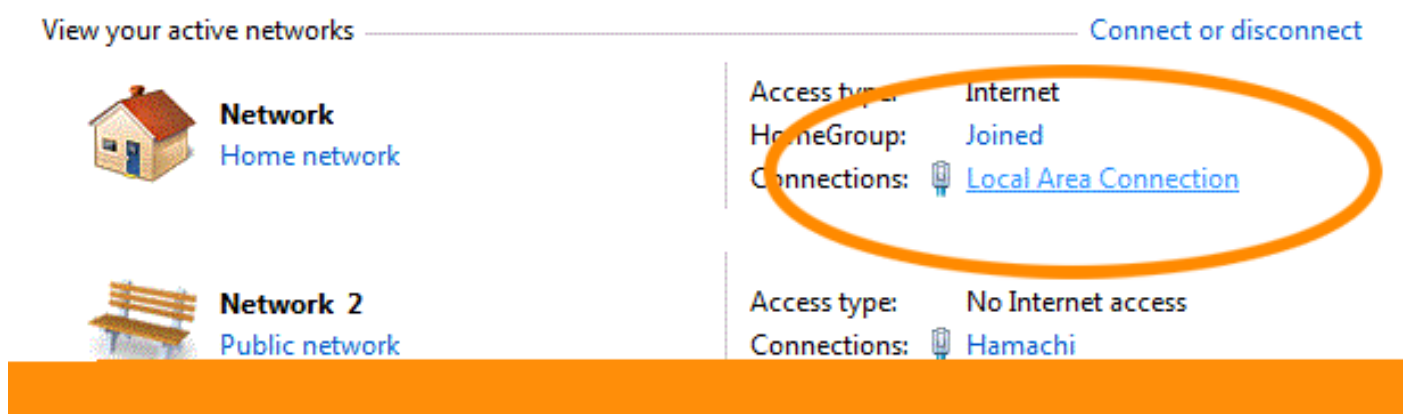
Run...





start\_win7\_2.gif

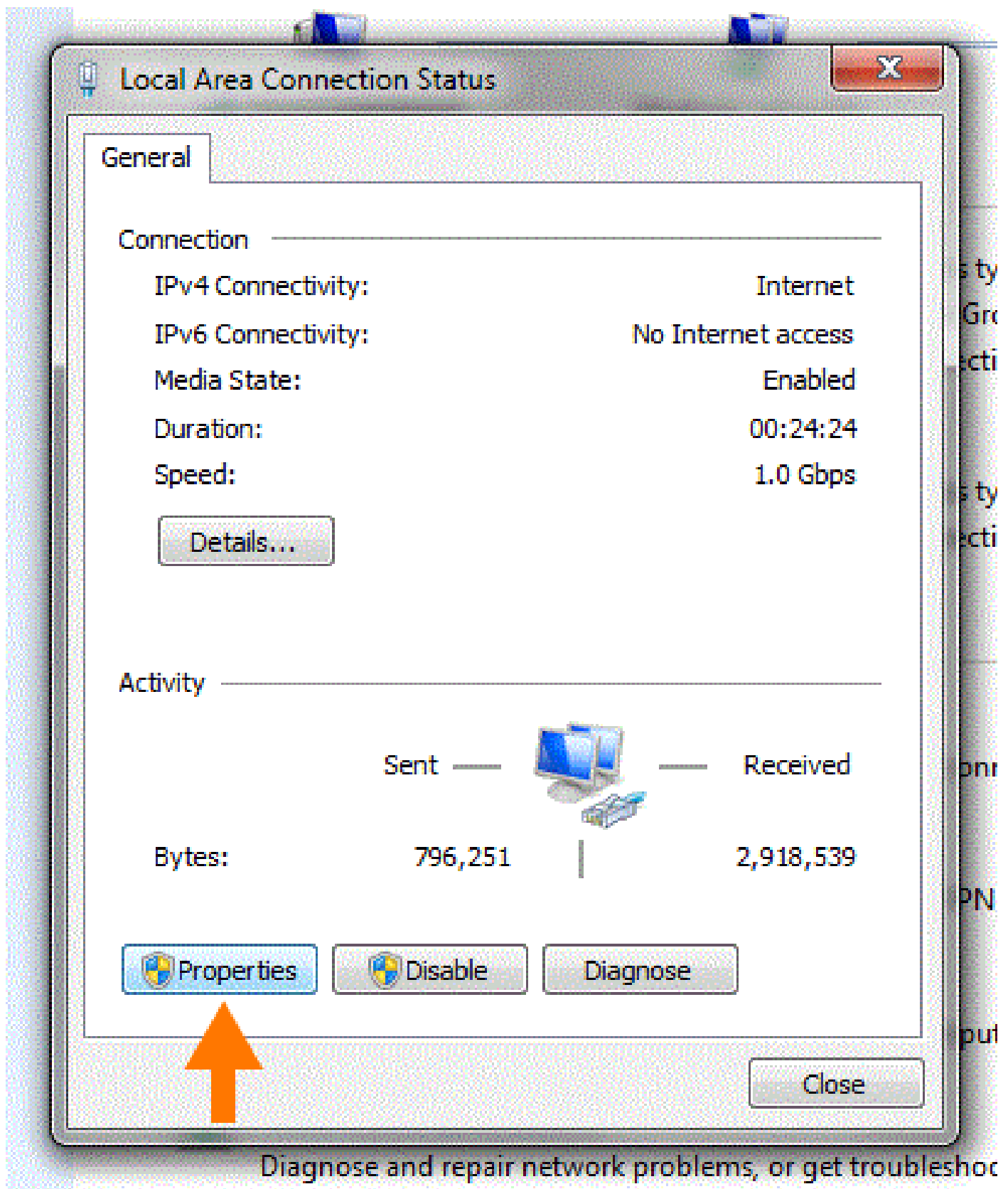
3. Under **Active Networks**, select your primary connection or Local Area Connection.



start\_win7\_3.gif

4. Select **Properties**.

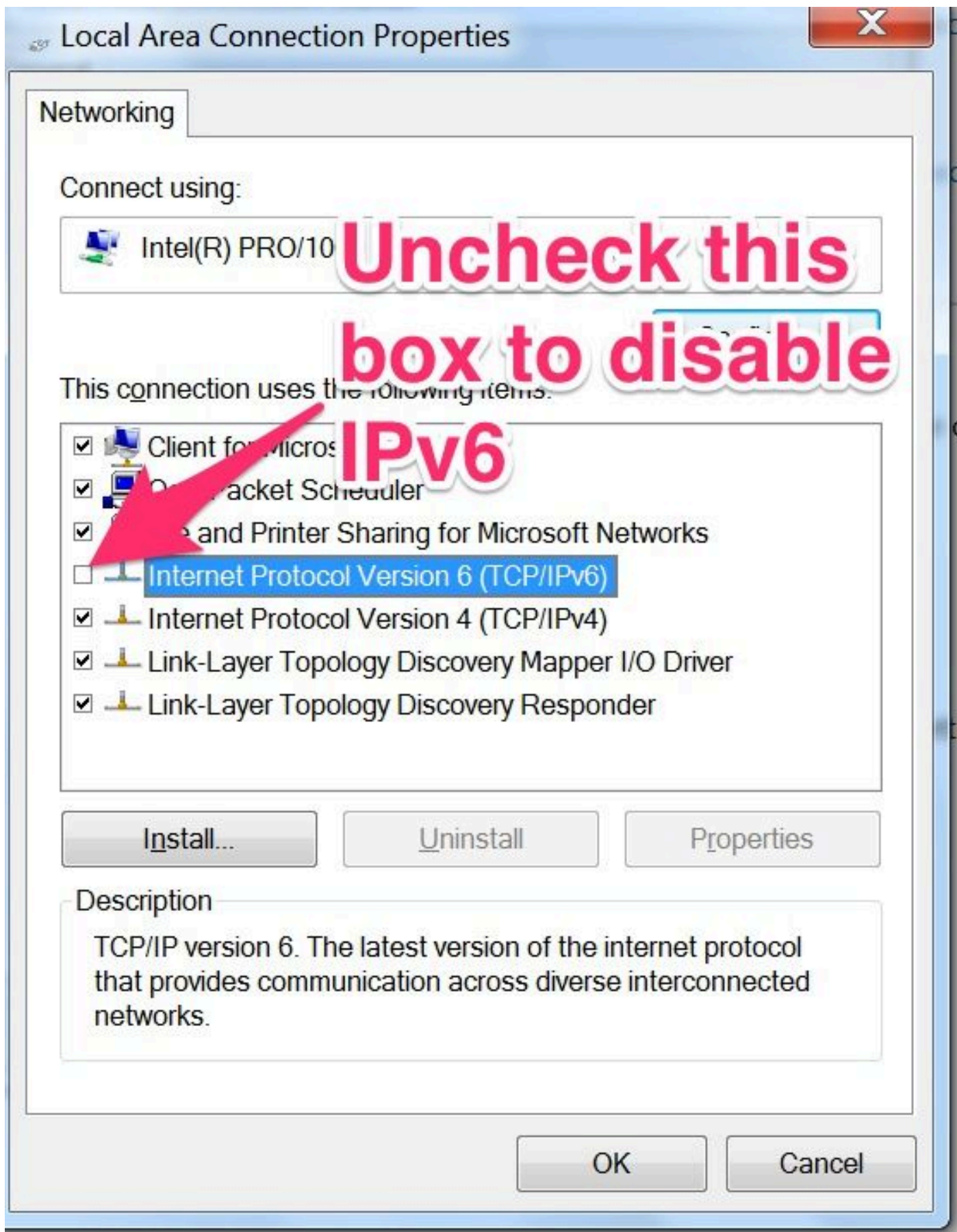
Windows 7 can prompt you for permission to make network setting changes.



Diagnose and repair network problems, or get troubleshoot

start\_win7\_4.gif

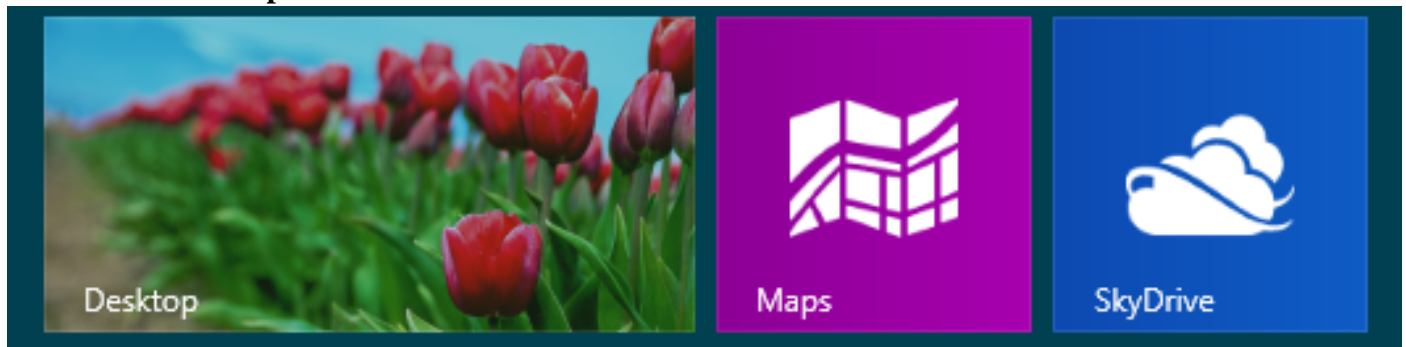
5. Unselect **Internet Protocol Version 6**.



6. Select **OK**.

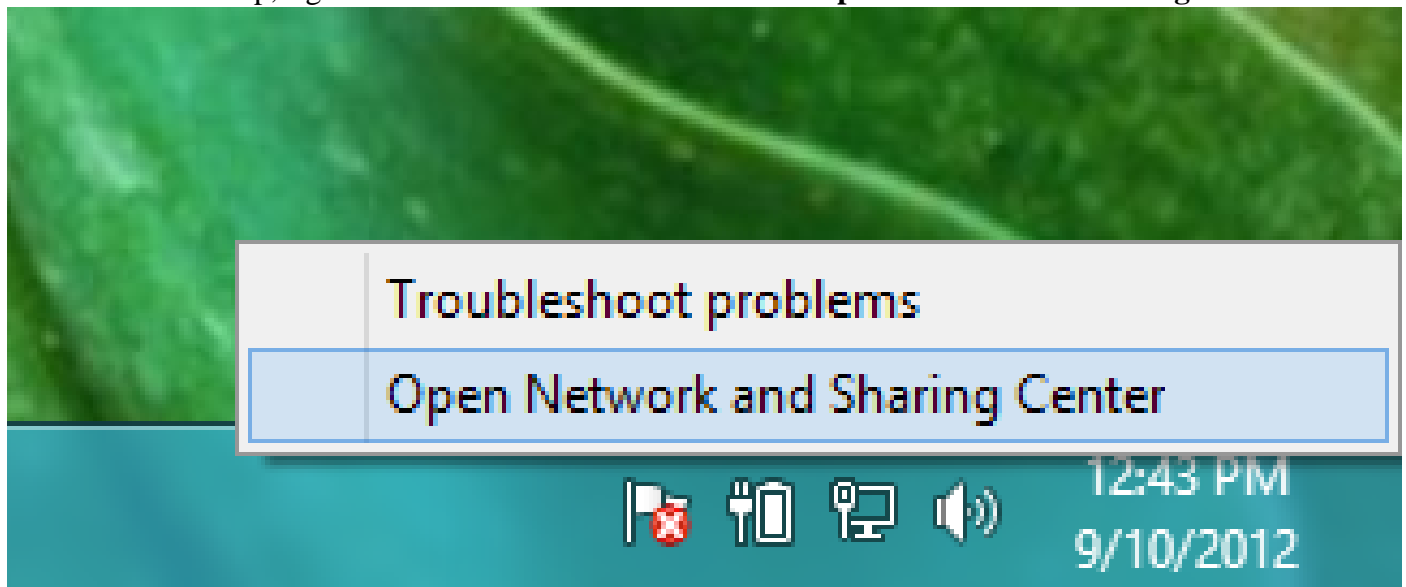
## Windows 8

1. From the Windows 8 **Start** menu, go to **Desktop**.
2. Select the **Desktop** tile.



*start\_win8\_1.png*

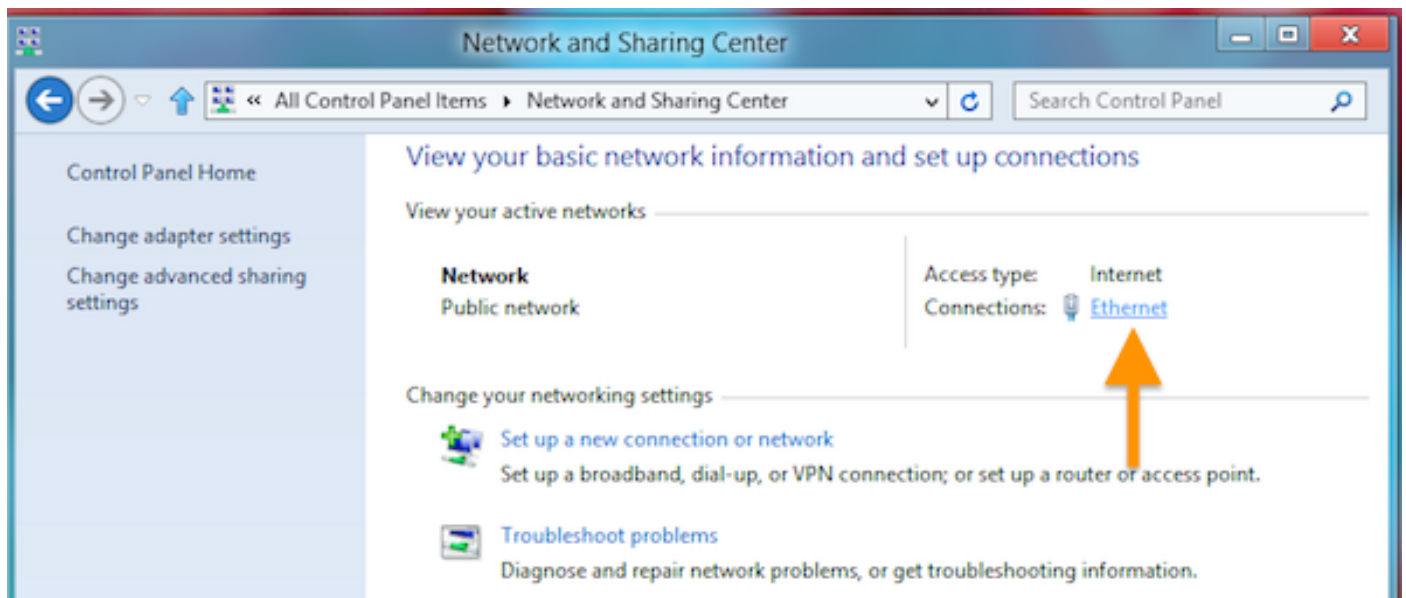
3. From the Desktop, right-click the **Networks** icon and select **Open Network and Sharing Center**.



*start\_win8\_2.png*

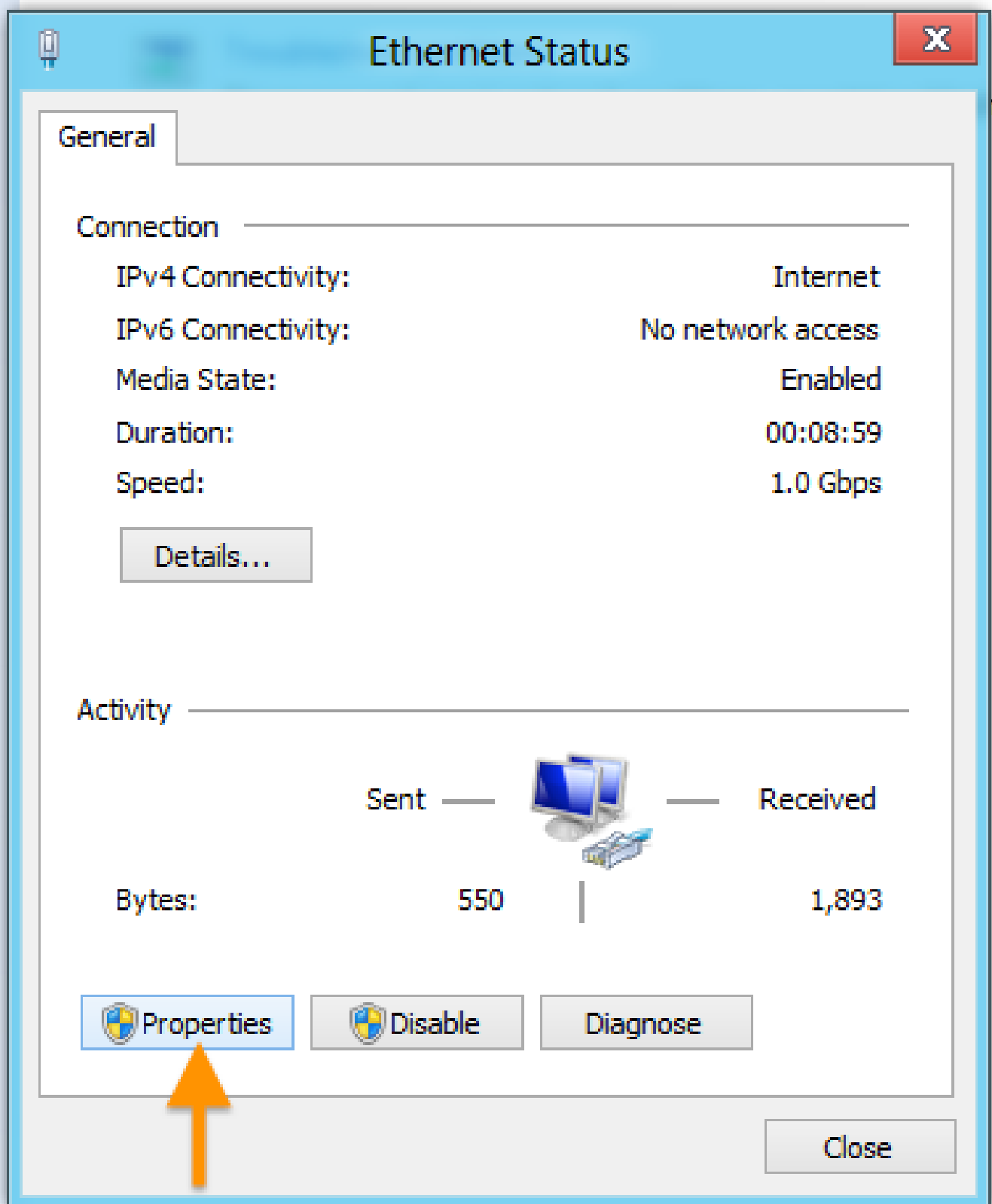
4. Under **Active Networks**, Select your primary connection or Local Area Connection.

While in the **Open Network and Sharing Center**, select the current active connection or the connection that you want to configure Umbrella on. In this example, the Ethernet adapter is the active connection.



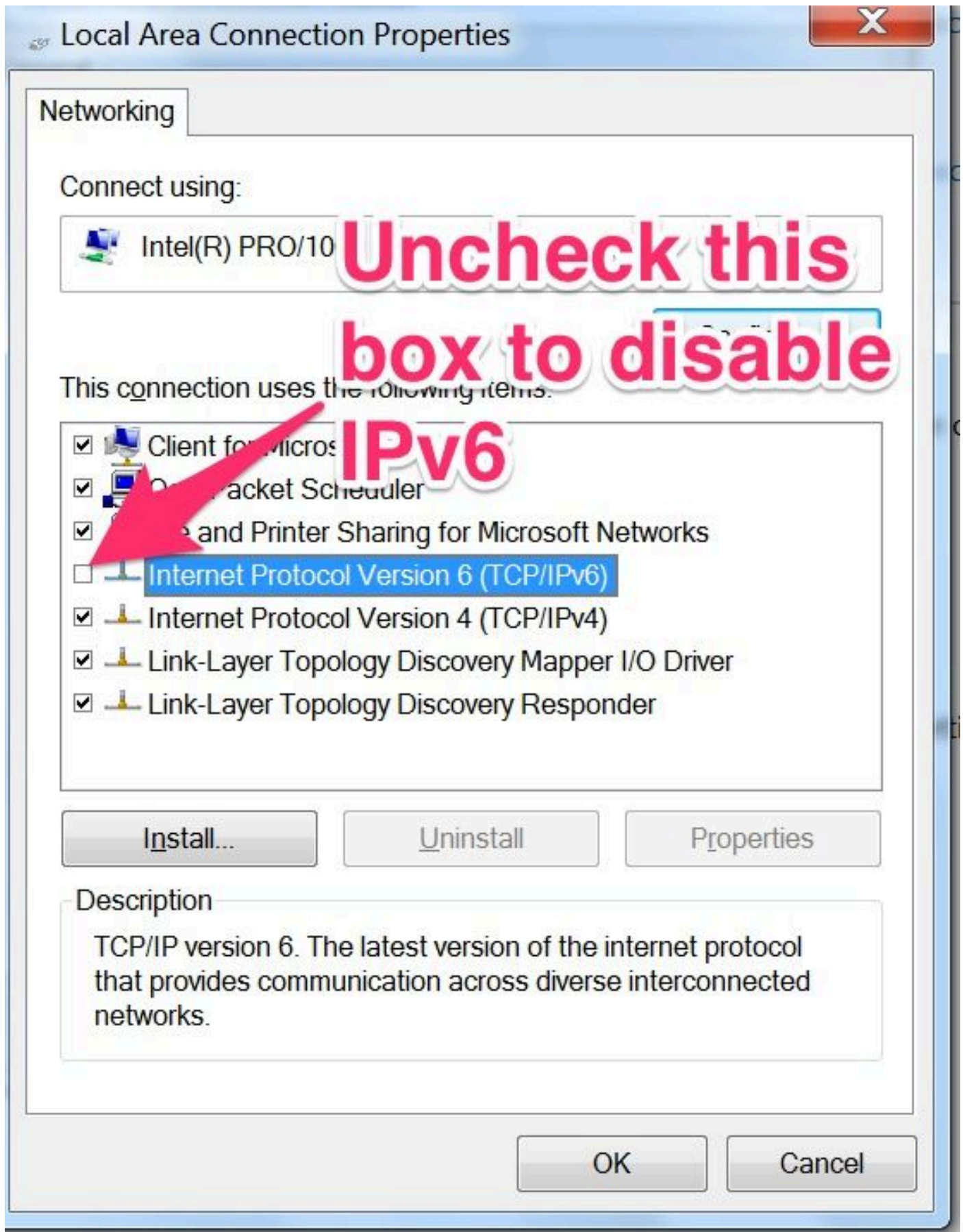
start\_win8\_3.png

5. When the adapter status window pops up, select **Properties**.



start\_win8\_4.png

6. Unselect **Internet Protocol Version 6**.



7. Select **OK**.