

VPN Inline Posture using iPEP ISE and ASA

TAC

Document ID: 115724

Contributed by Bastien Migette, Cisco TAC Engineer.
Mar 19, 2013

Contents

Introduction

Prerequisites

- Requirements
- Components Used
- Conventions

Background Information

Basic Flow

- Example Topology

ASA Configuration

ISE Configuration

- iPEP Configuration

Authentication and Posture Configuration

- Posture Profiles Configuration
- Authorization Configuration

Result

Related Information

Introduction

This document provides information on how to set up inline posture with an Adaptive Security Appliance (ASA) and an Identity Services Engine (ISE).

Prerequisites

Requirements

There are no specific requirements for this document.

Components Used

The information in this document is based on version 8.2(4) for the ASA and version 1.1.0.665 for the ISE.

Conventions

Refer to the Cisco Technical Tips Conventions for more information on document conventions.

Background Information

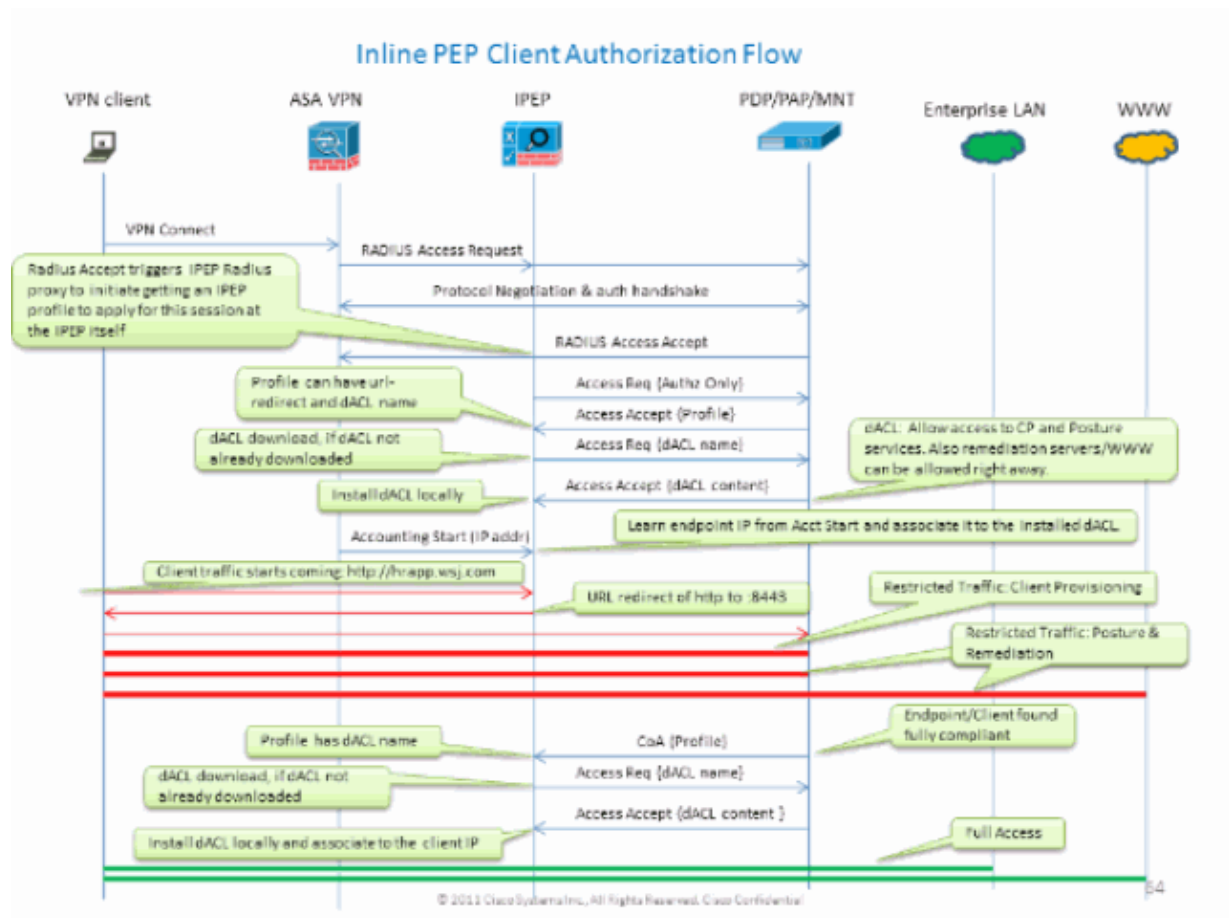
The ISE provides a lot of AAA Services (Posture, Profiling, Authentication, etc). Some Network Devices (NAD) support Radius Change Of Authorization (CoA) that allows to dynamically change the authorization profile of an end device based on its Posture or Profiling result. Other NADs such as the ASA do not support this feature yet. This means that an ISE running in Inline Posture Enforcement mode (iPEP) is needed to dynamically change the network access policy of an end device.

The basic concept is that all user traffic will go through the iPEP, with the node also acting as a Radius Proxy.

Basic Flow

1. VPN User logs in.
2. ASA sends the request to the iPEP node (ISE).
3. The iPEP rewrites the request (by adding Cisco AV-PAIR attributes to indicate this is an iPEP authentication) and sends the request to the ISE Policy Node (PDP).
4. The PDP replies back to the iPEP which will forward to the NAD.
5. If the user is authenticated, the NAD MUST send an accounting-start request (see CSCtz84826). This will trigger the session initiation on the iPEP. At this stage, the user is redirected for posture. Additionally, you need to enable interim-accounting-update for tunnel established from the WEBVPN Portal, as the ISE expects to have the attribute framed-ip-address in the radius accounting. However, when connecting to the portal, the VPN IP Address of the client is not yet known because the tunnel is not established. This will ensure that the ASA will send interim updates, such as when the tunnel will be established.
6. The user goes through the posture assessment, and based on the results the PDP will update the session using CoA on the iPEP.

This screenshot illustrates this process:



Example Topology


```

crypto map CM1 10 ipsec-isakmp dynamic DMAP1
crypto map CM1 interface outside
crypto isakmp enable outside
crypto isakmp policy 1
authentication pre-share
encryption aes
hash sha
group 2
lifetime 86400
!
ip local pool VPN 192.168.5.1-192.168.5.100
!
group-policy DfltGrpPolicy attributes
dns-server value 192.168.101.3

!--- The VPN User needs to be able to resolve the CN from the
!--- ISE HTTPS Certificate (which is sent in the radius response)

vpn-tunnel-protocol IPSec svc webvpn
split-tunnel-policy tunnelspecified
split-tunnel-network-list value split
address-pools value VPN
!
tunnel-group cisco general-attributes
address-pool VPN
authentication-server-group ISE
accounting-server-group ISE

!--- Does not work without this (see introduction)

!
tunnel-group cisco ipsec-attributes
pre-shared-key cisco
!
route outside 0.0.0.0 0.0.0.0 10.48.39.5 1
route ISE 192.168.0.0 255.255.0.0 192.168.102.254 1

!--- You need to make sure the traffic to the local subnets
!--- are going through the inline ISE

!

```

ISE Configuration

iPEP Configuration

The first thing to do is to add an ISE as an iPEP Node. You can find additional information about the process here:

http://www.cisco.com/en/US/docs/security/ise/1.1/user_guide/ise_ipep_deploy.html#wp1110248.

This is basically what you have to configure in the various tabs (screenshots provided in this section illustrate this):

- Configure untrusted IP and Global IP settings (in this case, untrusted IP is 192.168.102.254).
- Deployment is routed mode.
- Put a static filter for the ASA to be allowed to go through the iPEP box (otherwise, connectivity to/from the ISE thru iPEP box is dropped).
- Configure the Policy ISE as Radius server and the ASA as Radius client.
- Add a route to the VPN Subnet that points to the ASA.

- Set the Monitoring ISE as the Logging Host (port 20514 by default; in this case, the policy ISE is monitoring as well).

Important Certificate Configuration Requirements:

Before attempting to register an iPEP node, ensure that the following certificate Extended Key Usage requirements are met. If the certificates are not properly configured on the iPEP and Admin nodes, the registration process will complete. However, you will lose admin access to the iPEP node. The following details have been extrapolated from the ISE 1.1.x iPEP Deployment Guide:

The presence of certain combinations of attributes in the local certificates of the Administration and Inline Posture nodes can prevent mutual authentication from working.

The attributes are:

- Extended Key Usage (EKU) Server Authentication
- Extended Key Usage (EKU) Client Authentication
- Netscape Cert Type SSL Server Authentication
- Netscape Cert Type SSL Client Authentication

Either of the following combinations is required for the Administration certificate:

- Both EKU attributes should be disabled, if both EKU attributes are disabled in the Inline Posture certificate, or both EKU attributes should be enabled, if the server attribute is enabled in the Inline Posture certificate.
- Both Netscape Cert Type attributes should be disabled, or both should be enabled.

Either of the following combinations is required for the Inline Posture certificate:

- Both EKU attributes should be disabled, or both should be enabled, or the server attribute alone should be enabled.
- Both Netscape Cert Type attributes should be disabled, or both should be enabled, or the server attribute alone should be enabled.
- Where self-signed local certificates are used on the Administration and Inline Posture nodes, you must install the self-signed certificate of the Administration node in the trust list of the Inline Posture node. In addition, if you have both primary and secondary Administration nodes in your deployment, you must install the self-signed certificate of both Administration nodes in the trust list of the Inline Posture node.
- Where CA-signed local certificates are used on the Administration and Inline Posture nodes, mutual authentication should work correctly. In this case, the certificate of the signing CA is installed on the Administration node prior to registration, and this certificate is replicated to the Inline Posture node.
- If CA-issued keys are used for securing communication between the Administration and Inline Posture nodes, before you register the Inline Posture node, you must add the public key (CA certificate) from the Administration node to the CA certificate list of the Inline Posture node.

Basic Configuration:

Deployment Nodes List > w-ise-ipep-1

Edit Node

General Settings **Basic Information** Deployment Modes Filters Radius Config Managed Subnets Static Routes Logging Failover

Node Name **w-ise-ipep-1**

** Configuration changes in this tab will result in node reboot.*

Basic Information

Host Name **w-ise-ipep-1** Domain Name **wlaaan.com**

Time Sync Server DNS Server

Primary	<input type="text" value="192.168.109.6"/>	* Primary	<input type="text" value="192.168.101.3"/>
Secondary	<input type="text"/>	Secondary	<input type="text" value="192.168.103.3"/>
Tertiary	<input type="text"/>	Tertiary	<input type="text"/>

Trusted Interface (to protected network) **Untrusted Interface (to managed network)**

IP Address 192.168.100.1	* IP Address <input type="text" value="192.168.102.254"/>
Subnet Mask 255.255.255.0	* Subnet Mask <input type="text" value="255.255.255.0"/>
Default Gateway 192.168.100.250	* Default Gateway <input type="text" value="192.168.102.254"/>

Set Management VLAN ID Set Management VLAN ID

Save **Reset**

Deployment Mode Configuration:

Deployment Nodes List > w-ise-ipep-1

Edit Node

General Settings Basic Information **Deployment Modes** Filters Radius Config Managed Subnets Static Routes Logging Failover

Node Name **w-ise-ipep-1**

** Configuration changes in this tab will result in both active and standby nodes reboot.*

Maintenance Mode Routed Mode Bridged Mode

Save **Reset**

Filters Configuration:

Deployment Nodes List > w-ise-ipep-1

Edit Node

General Settings Basic Information Deployment Modes **Filters** Radius Config Managed Subnets Static Routes Logging Failover

Node Name **w-ise-ipep-1**

MAC Filters

* MAC Address	IP Address	Description
<input type="text"/>	<input type="text"/>	<input type="text"/>

Subnet Filters

* Subnet Address	* Subnet Mask	Description
<input type="text" value="192.168.102.253"/>	<input type="text" value="255.255.255.255"/>	<input type="text" value="ASA"/>

Save **Reset**

Radius Configuration:

Deployment Nodes List > w-ise-ipep-1

Edit Node

General Settings Basic Information Deployment Modes Filters **Radius Config** Managed Subnets Static Routes Logging Failover

Node Name: w-ise-ipep-1

Radius Configuration

Server Configuration

* IP Address	* Shared Secret	* Timeout(in seconds)	* Retries	Description	Enable KeyWrap	* Authentication Settings
192.168.101.1	*****	5	3	ISE ADM	<input type="checkbox"/>	*****

Client Configuration

* IP Address	* Shared Secret	* Timeout(in seconds)	* Retries	Description	Enable KeyWrap	* Authentication Settings
192.168.102.253	*****	5	3	ASA	<input type="checkbox"/>	*****

Save Reset

Static Routes:

Deployment Nodes List > w-ise-ipep-1

Edit Node

General Settings Basic Information Deployment Modes Filters Radius Config Managed Subnets **Static Routes** Logging Failover

Node Name: w-ise-ipep-1

Static Routes

* Subnet Address	* Subnet Mask	* Interface Type	Default Gateway	Description
192.168.5.0	255.255.255.0	Untrusted	192.168.102.253	

Save Reset

Logging:

Deployment Nodes List > w-ise-ipep-1

Edit Node

General Settings Basic Information Deployment Modes Filters Radius Config Managed Subnets Static Routes **Logging** Failover

Node Name: w-ise-ipep-1

Logging

* IP Address	192.168.101.1
* Port	20514

Save Reset

Authentication and Posture Configuration

There are three posture states:

- Unknown: Posture is not yet made
- Compliant: Posture is made and the system is Compliant
- Non-Compliant: Posture is made, but the system failed at least one check

Now the authorization profiles have to be created (which will be Inline Authorization Profiles: This will add the `ipep-authz=true` attribute in the Cisco AV-Pair) that will be used for the different cases.

Commonly, the Unknown profile returns the redirect URL (posture discovery) which will forward the traffic of the user to the ISE and will ask to install the NAC Agent. If the NAC Agent is already installed, this will allow its HTTP Discovery request to be forwarded to the ISE.

In this profile, an ACL that allows HTTP Traffic to the ISE and DNS at least is used.

The Compliant and Non-compliant profiles usually return a downloadable ACL to grant network access based on the user profile. Non-compliant profile can allow the users to access a web server to download an Antivirus for example, or grant limited network access.

In this example, the Unknown and Compliant profiles are created, and the presence of notepad.exe as requirements is checked.

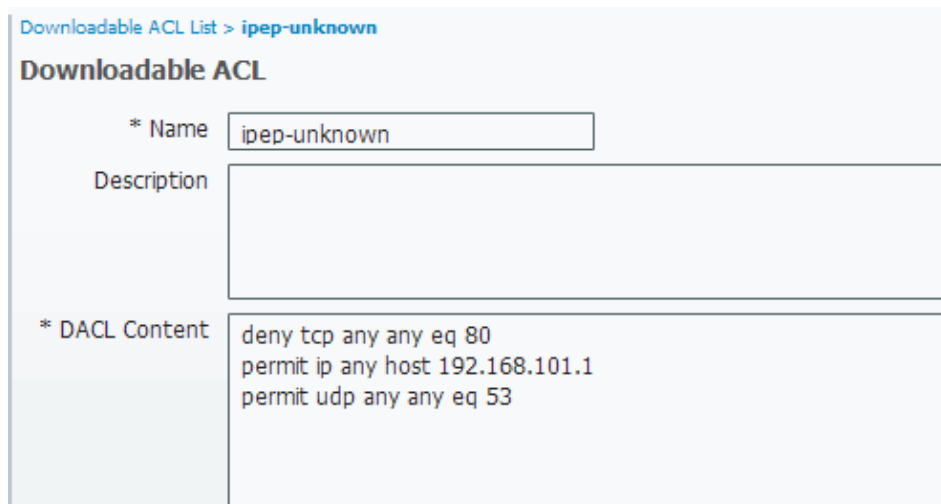
Posture Profiles Configuration

The first thing to do is to create the Downloadable ACLs (dACL) and profiles:

Note: This is not mandatory to have the dACL name matching the profile name.

- Compliant
 - ◆ ACL: ipep-unknown
 - ◆ Authorization Profile: ipep-unknown
- Non-Compliant
 - ◆ ACL: ipep-non-compliant
 - ◆ Authorization Profile: ipep-non-compliant

Unknown dACL:



The screenshot shows the configuration page for a Downloadable ACL (dACL) named 'ipep-unknown'. The page title is 'Downloadable ACL List > ipep-unknown'. The main heading is 'Downloadable ACL'. There are three main sections: 'Name', 'Description', and 'DACL Content'. The 'Name' field contains 'ipep-unknown'. The 'Description' field is empty. The 'DACL Content' field contains the following ACL rules:

```
deny tcp any any eq 80
permit ip any host 192.168.101.1
permit udp any any eq 53
```

Unknown Profile:

Inline Posture Node Profiles > **ipep-unknown**

Inline Posture Node Profile

* Name

Description

* DACL Name

URL Redirect

▼ Attributes Details

```
cisco-av-pair = ipep-authz=true
DAACL = ipep-unknown
cisco-av-pair = url-redirect=https://ip:port/guestportal/gateway?sessionId=SessionIdValue&action=cpp
```

Compliant DACL:

Downloadable ACL List > **PERMIT_ALL_TRAFFIC**

Downloadable ACL

* Name

Description

* DACL Content

Compliant Profile:

Inline Posture Node Profiles > **ipep-compliant**

Inline Posture Node Profile

* Name

Description

* DACL Name

URL Redirect

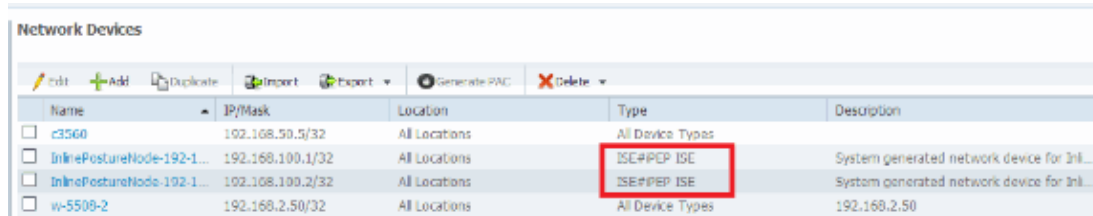
▼ Attributes Details

```
cisco-av-pair = ipep-authz=true
DAACL = PERMIT_ALL_TRAFFIC
```

Authorization Configuration

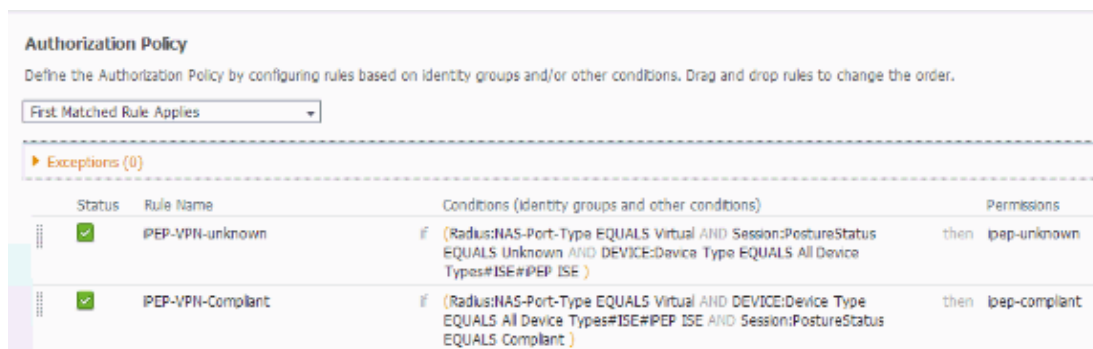
Now that the profile is created, you need to match the Radius Request coming from the iPEP and apply to them the right profiles. The iPEP ISEs are defined with a special device type that will be used in the Authorization rules:

NADs:



Name	IP/Mask	Location	Type	Description
c3560	102.108.50.5/32	All Locations	All Device Types	
InlinePostureNode-192-1...	192.168.100.1/32	All Locations	ISE#PEP ISE	System generated network device for Inl...
InlinePostureNode-192-1...	102.108.100.2/32	All Locations	ISE#PEP ISE	System generated network device for Inl...
w-5508-2	192.168.2.50/32	All Locations	All Device Types	192.168.2.50

Authorization:



Authorization Policy

Define the Authorization Policy by configuring rules based on identity groups and/or other conditions. Drag and drop rules to change the order.

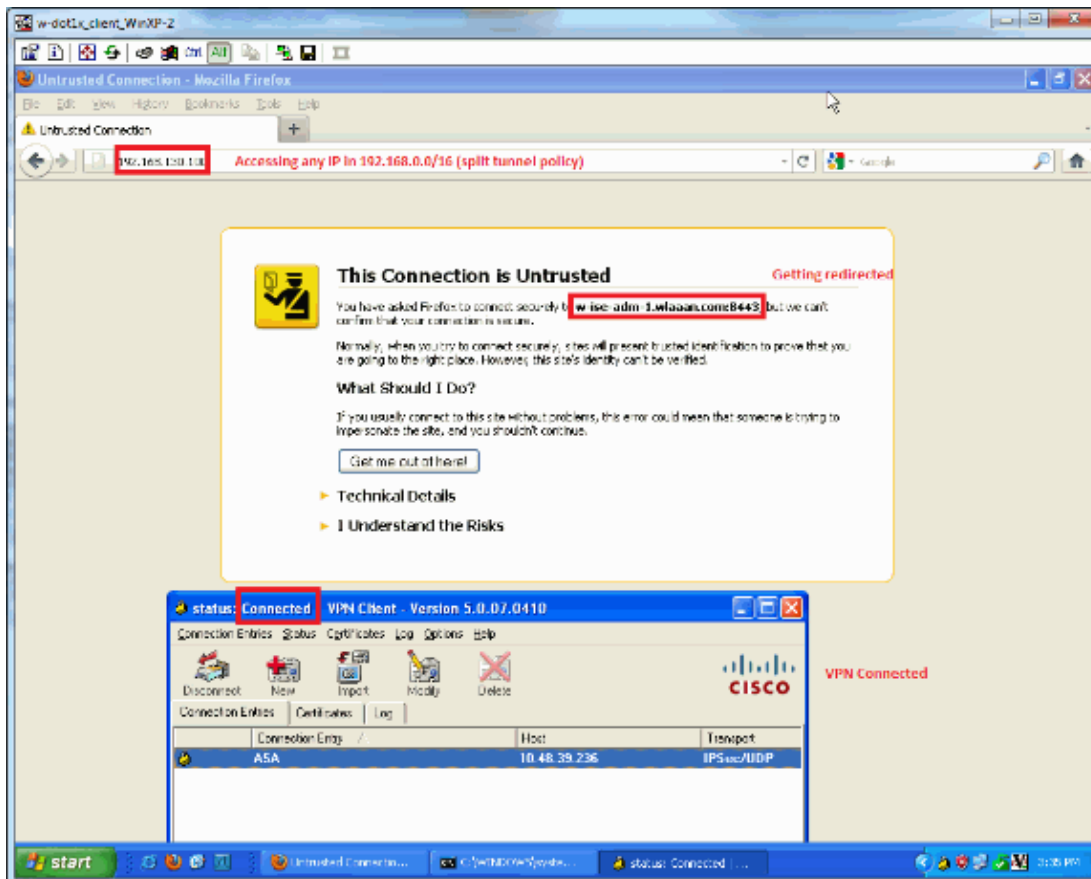
First Matched Rule Applies

Exceptions (0)

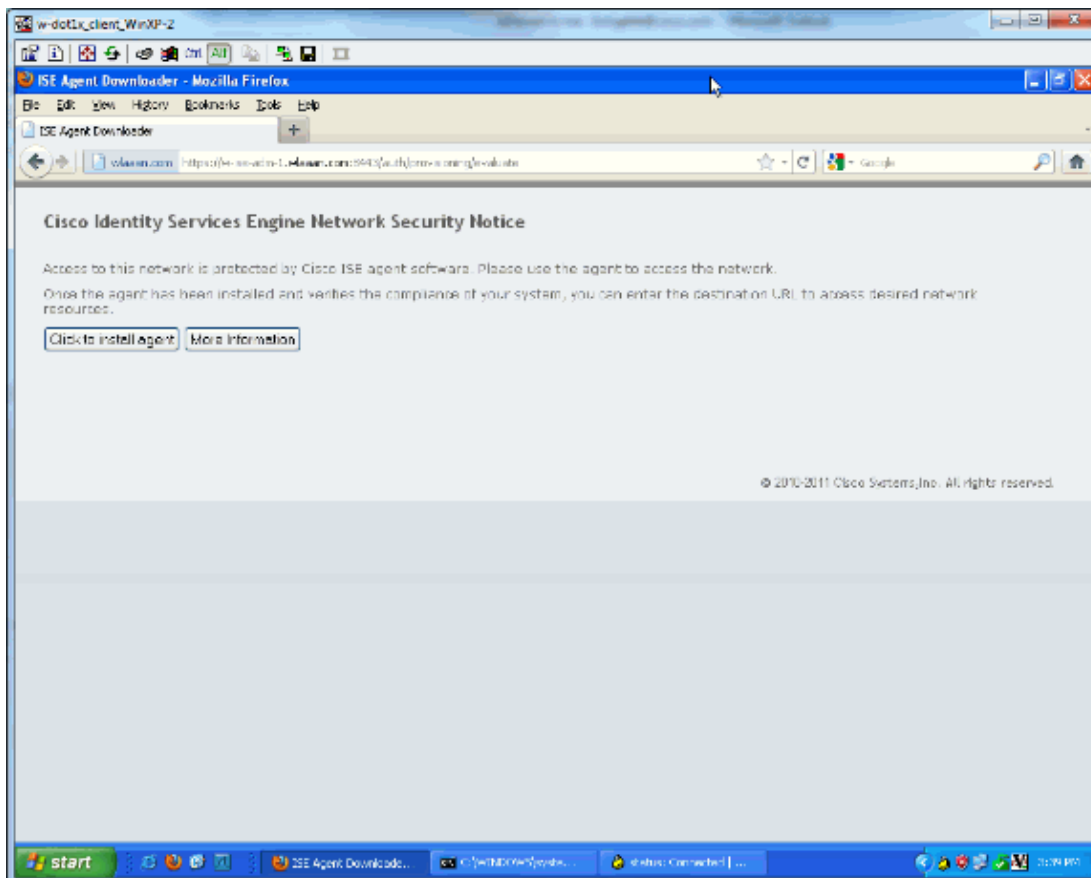
Status	Rule Name	Conditions (Identity groups and other conditions)	Permissions
✓	IPEP-VPN-unknown	if (Radius:NAS-Port-Type EQUALS Virtual AND Session:PostureStatus EQUALS Unknown AND DEVICE:Device Type EQUALS All Device Types#ISE#PEP ISE)	then ipep-unknown
✓	IPEP-VPN-Compliant	if (Radius:NAS-Port-Type EQUALS Virtual AND DEVICE:Device Type EQUALS All Device Types#ISE#PEP ISE AND Session:PostureStatus EQUALS Compliant)	then ipep-compliant

Note: If the agent is not installed on the machine, you can define Client Provisioning rules.

Result



You are prompted to install the agent (in this example, client provisioning is already set):



Some output at this stage:

```
ciscoasa# show vpn-sessiondb remote

Session Type: IPsec
Username      : cisco                Index      : 26
Assigned IP   : 192.168.5.2          Public IP   : 10.48.39.134
Protocol      : IKE IPsec
License       : IPsec
Encryption    : AES128                Hashing     : SHA1
Bytes Tx      : 143862                Bytes Rx    : 30628
Group Policy  : DfltGrpPolicy         Tunnel Group : cisco
Login Time    : 13:43:55 UTC Mon May 14 2012
Duration      : 0h:09m:37s
Inactivity    : 0h:00m:00s
NAC Result    : Unknown
VLAN Mapping  : N/A                   VLAN        : none
```

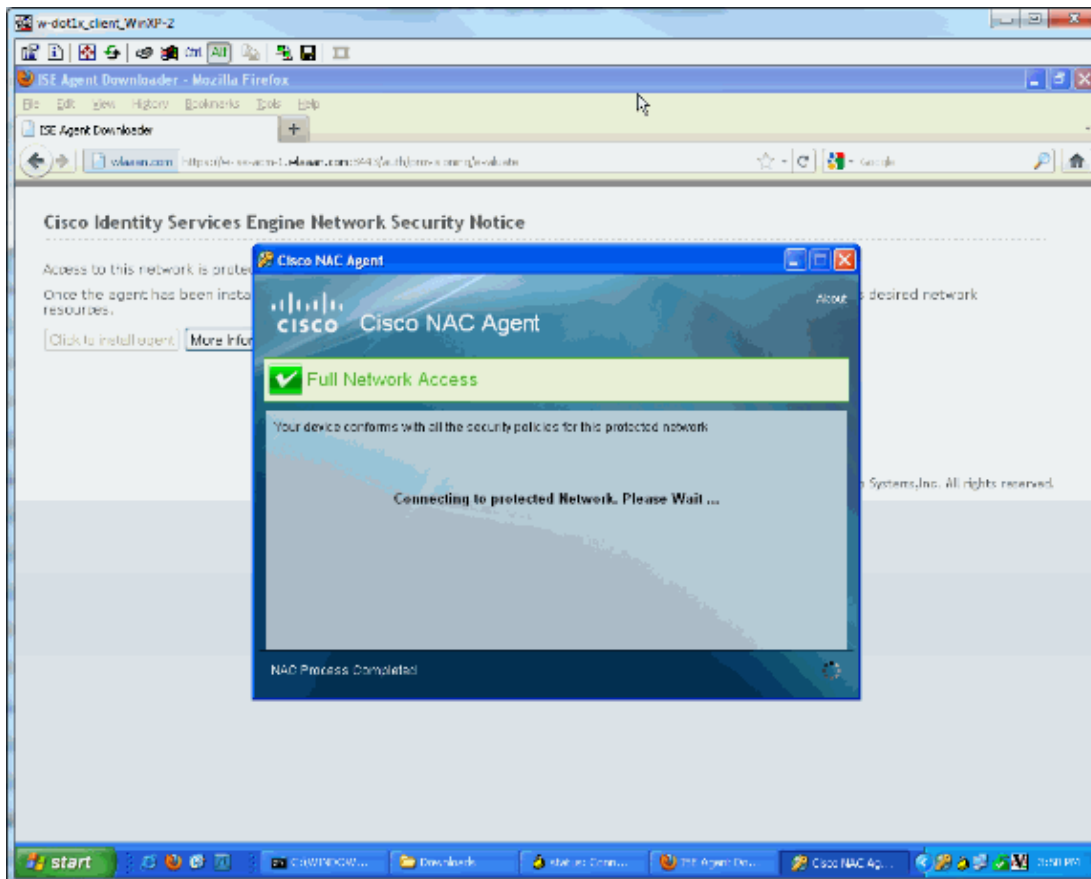
And from the iPEP:

```
w-ise-ipep-1/admin# show pep table session

Current Sessions (IP, MAC(if available), Profile ID, VLAN (if any)):
192.168.5.2 00:00:00:00:00:00 2 0
w-ise-ipep-1/admin# show pep table accesslist normal
#ACSACL#-IP-ipep-unknown-4fb10ac2:
deny tcp any host 192.168.101.1 eq 80
deny tcp any host 192.168.101.1 eq 443
permit ip any host 192.168.101.1
permit udp any any eq 53
```

Once the agent is downloaded and installed:

The agent should automatically detect the ISE and runs the posture assessment (assuming you have the posture rules defined already, which is another subject). In this example, the posture is successful, and this appears:



The Authentications

Time	Status	Device	Endpoint ID	IP Address	Network Device	Device Port	Full Profile Name	Profile Name	Profile Status	Event	Policy Name
May 14, 12 04:56:20Z	FR	ii			Information...		ipep-profile		Complete	Dynamic Authorization succeeded	
May 14, 12 04:56:20Z	FR	ii	#ACSACL-IP-PERMIT_ALL_TRAFFIC-4f57e406		Information...		3- Posture is made, needs to be completed, new ACL is downloaded		Pending	DACL Downloaded Succeeded	
May 14, 12 04:56:15Z	FR	ii	disk		Information...		ipep-profile		Pending		
May 14, 12 04:56:11Z	FR	ii	disk	11.41.22.124	Information...		2- iPEP loads the unknown ACL		Not Applicable	Authentication succeeded	
May 14, 12 04:56:10Z	FR	ii	#ACSACL-IP-ipep-unknown-4fb10ac2		Information...		1- User authentication		Pending	DACL Downloaded Succeeded	
May 14, 12 04:56:09Z	FR	ii	disk		Information...		ipep-profile		Pending		

Note: There are two authentications in the screenshot above. However, because the iPEP box caches the ACLs, it is not downloaded every time.

On the iPEP:

```
w-ise-ipep-1/admin# show pep table session
```

```
Current Sessions (IP, MAC(if available), Profile ID, VLAN (if any)):  
192.168.5.2 00:00:00:00:00:00 3 0
```

```
w-ise-ipep-1/admin# show pep table accesslist normal  
#ACSACL#-IP-PERMIT_ALL_TRAFFIC-4f57e406:  
permit ip any any
```

```
#ACSACL#-IP-ipep-unknown-4fb10ac2:  
deny tcp any host 192.168.101.1 eq 80  
deny tcp any host 192.168.101.1 eq 443  
permit ip any host 192.168.101.1  
permit udp any any eq 53  
w-ise-ipep-1/admin#
```

Related Information

- **Technical Support & Documentation – Cisco Systems**
-

[Contacts & Feedback](#) | [Help](#) | [Site Map](#)

© 2014 – 2015 Cisco Systems, Inc. All rights reserved. [Terms & Conditions](#) | [Privacy Statement](#) | [Cookie Policy](#) | [Trademarks of Cisco Systems, Inc.](#)

Updated: Mar 19, 2013

Document ID: 115724
