

# Configure Firepower Management Center to Display Interface Bandwidth Utilization of Managed Device

## Contents

[Introduction](#)

[Prerequisites](#)

[Requirements](#)

[Components Used](#)

[Configure](#)

[Configurations](#)

[Verify](#)

[Troubleshoot](#)

## Introduction

This document describes how to configure the custom widget to depict the traffic rate on the interface of managed devices. The configuration shows a basic example of the traffic rate associated with each interface of all the managed devices.

## Prerequisites

### Requirements

Cisco recommends that you have knowledge of these topics:

- Knowledge of Firepower Technology
- Knowledge of basic navigation within the Firepower Management Center

### Components Used

The information in this document is based on these software and hardware versions:

- Firepower Management Center version 6.1.x and above
- Applicable to managed Threat Defense/Firepower Sensors

The information in this document was created from the devices in a specific lab environment. All of the devices used in this document started with a cleared (default) configuration. If your network is live, make sure that you understand the potential impact of any command.

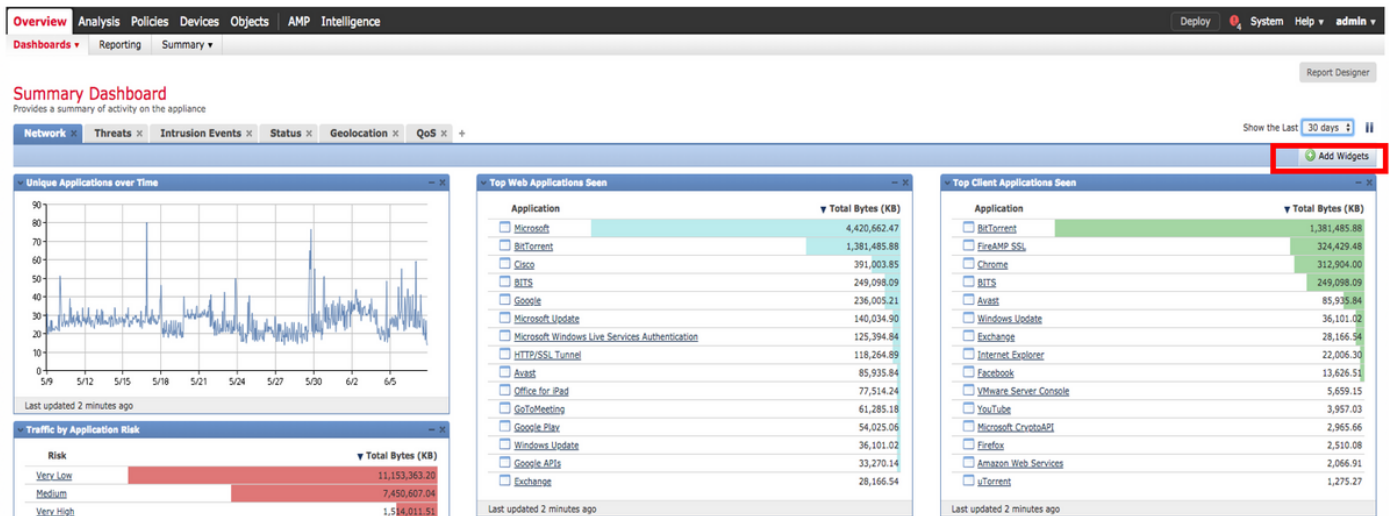
## Configure

### Configurations

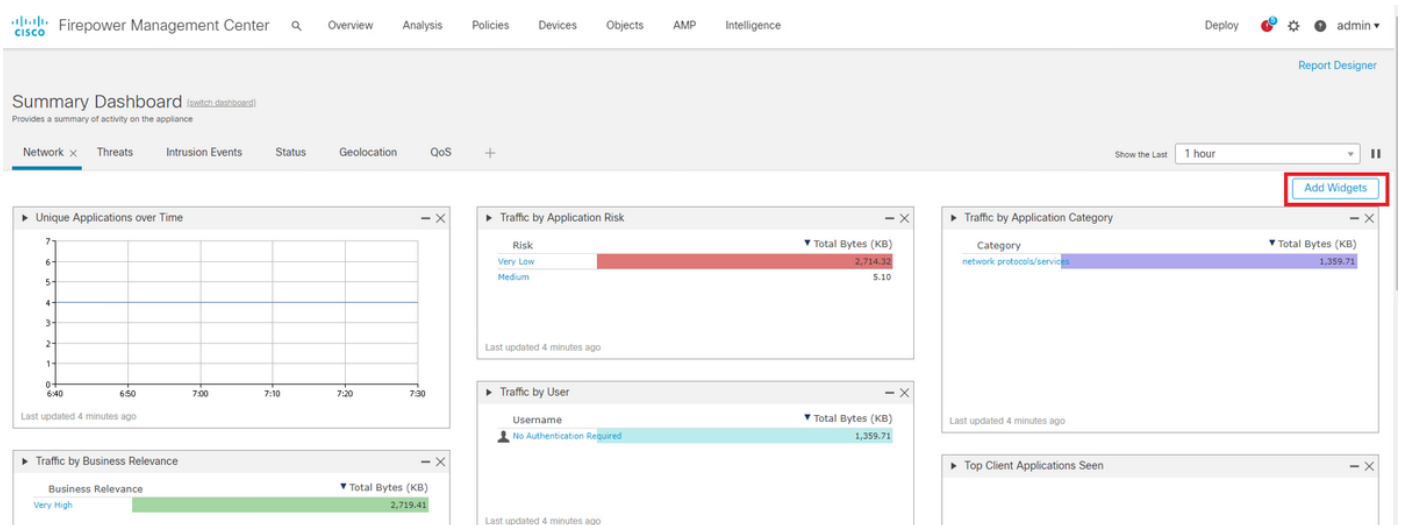
Step 1. Login to the Firepower Management Center with administrator privileges.

Once the login is successful, navigate to **Overview> Dashboard > Add Widgets**, as shown in the image

a) Classic view:



b) Light view:



Step 2. Click the **Add Widgets** and choose the Custom Analysis:

a) Classic view:

Overview Analysis Policies Devices Objects AMP Intelligence Deploy System Help admin

Dashboards Reporting Summary

Add Widgets

Summary Dashboard - Network

Categories

- All Categories (16)
  - Analysis & Reporting (5)
  - Miscellaneous (1)
  - Operations (10)

Appliance Information

This widget displays local appliance information including software versions, Remote Management, and High Availability status.

Appliance Status

This widget displays the current Health Monitoring appliance status.

Correlation Events

This widget displays Correlation events

Current Interface Status

This widget displays the current status of all local network interfaces.

Current Sessions

This widget displays a list of the user sessions currently logged-in to this appliance.

Custom Analysis

The Custom Analysis widget shows the top or bottom set of events (5, 10, 15, 20, or 25 events) from a user-selectable event table, search, and field.

13 on Tab

## b) Light view:

Firepower Management Center Overview Analysis Policies Devices Objects AMP Intelligence Deploy System Help admin

Add Widgets

Summary Dashboard - Network

Categories

- All Categories (16)
  - Analysis & Reporting (5)
  - Miscellaneous (1)
  - Operations (10)

Appliance Information

This widget displays local appliance information including software versions, Remote Management, and High Availability status.

Appliance Status

This widget displays the current Health Monitoring appliance status.

Correlation Events

This widget displays Correlation events

Current Interface Status

This widget displays the current status of all local network interfaces.

Current Sessions

This widget displays a list of the user sessions currently logged-in to this appliance.

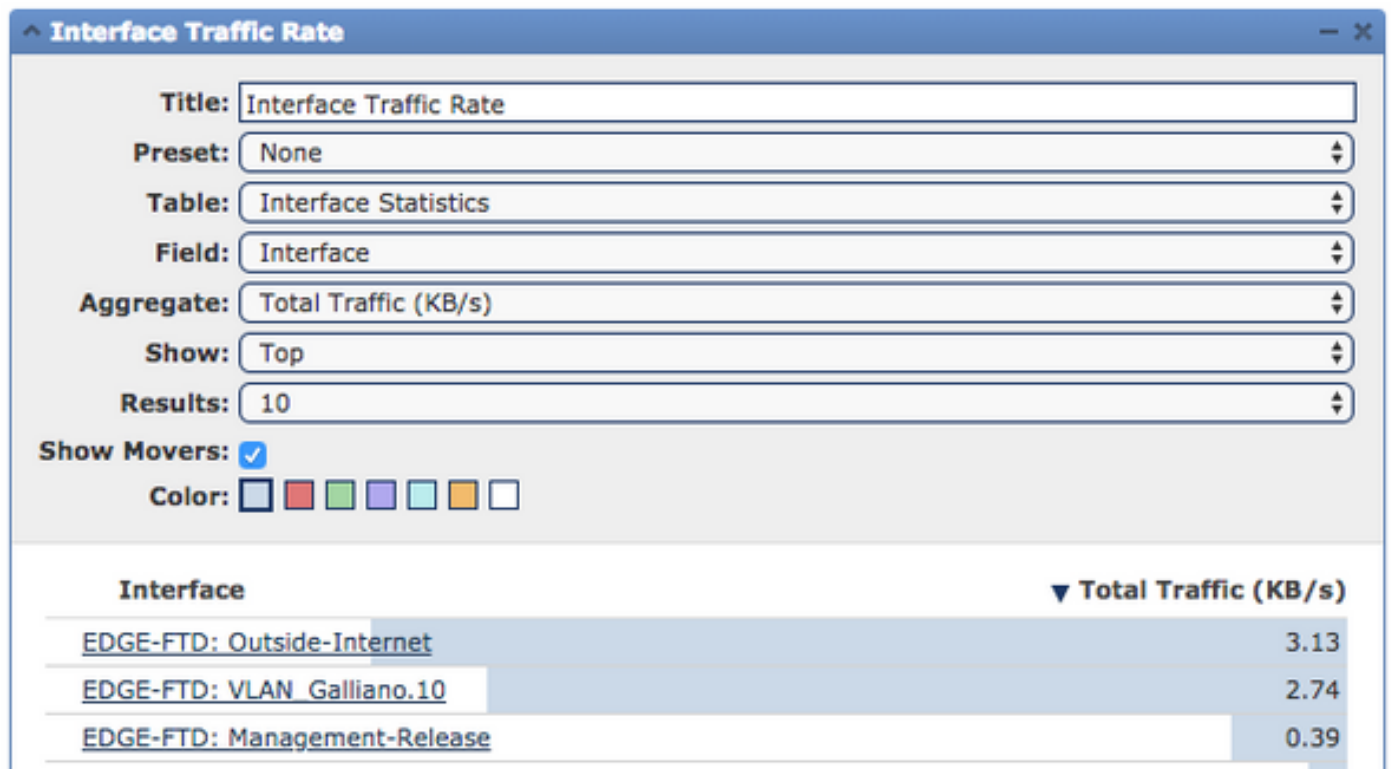
Custom Analysis

The Custom Analysis widget shows the top or bottom set of events (5, 10, 15, 20, or 25 events) from a user-selectable event table, search, and field.

12 on Tab

Step 3. Navigate back to the dashboard and configure the widget as shown in the image:

## a) Classic view:



b) Light view:

▼ Interface Traffic Rate

Title:

Interface Traffic Rate

Preset:

None

Table:

Interface Statistics

Field:

Interface

Aggregate:

Total Traffic (KB/s)

Show:

Top

Results:

10

Show Movers:

☒

Color:

Interface	▼ Total Traffic (KB/s)
cmonterr_FTD: OUTSIDE_production	0.42
cmonterr_FTD: INSIDE_2841	0.42

## Verify

There is currently no verification procedure available for this configuration.

## Troubleshoot

There is currently no specific troubleshooting information available for this configuration.