

ASA 8.x : Allow Split Tunneling for AnyConnect VPN Client on the ASA Configuration Example

Contents

[Introduction](#)

[Prerequisites](#)

[Requirements](#)

[Components Used](#)

[Conventions](#)

[Background Information](#)

[Configure](#)

[Network Diagram](#)

[ASA Configuration Using ASDM 6.0\(2\)](#)

[ASA CLI Configuration](#)

[Establish the SSL VPN Connection with SVC](#)

[Verify](#)

[Troubleshoot](#)

[Related Information](#)

[Introduction](#)

This document provides step-by-step instructions on how to allow Cisco AnyConnect VPN client access to the Internet while they are tunneled into a Cisco Adaptive Security Appliance (ASA) 8.0.2. This configuration allows the client secure access to corporate resources via SSL while giving unsecured access to the Internet using split tunneling.

[Prerequisites](#)

[Requirements](#)

Ensure that you meet these requirements before you attempt this configuration:

- ASA Security Appliance needs to run version 8.x
- Cisco AnyConnect VPN Client 2.x **Note:** Download the AnyConnect VPN Client package (anyconnect-win*.pkg) from the Cisco [Software Download](#) ([registered](#) customers only) . Copy the AnyConnect VPN client to the ASA's flash memory, which is to be downloaded to the remote user computers in order to establish the SSL VPN connection with the ASA. Refer to the [Installing the AnyConnect Client](#) section of the ASA configuration guide for more information.

Components Used

The information in this document is based on these software and hardware versions:

- Cisco 5500 Series ASA that runs software version 8.0(2)
- Cisco AnyConnect SSL VPN Client version for Windows 2.0.0343
- PC which runs Microsoft Vista, Windows XP SP2 or Windows 2000 Professional SP4 with Microsoft Installer version 3.1
- Cisco Adaptive Security Device Manager (ASDM) version 6.0(2)

The information in this document was created from the devices in a specific lab environment. All of the devices used in this document started with a cleared (default) configuration. If your network is live, make sure that you understand the potential impact of any command.

Conventions

Refer to the [Cisco Technical Tips Conventions](#) for more information on document conventions.

Background Information

The Cisco AnyConnect VPN Client provides secure SSL connections to the security appliance for remote users. Without a previously installed client, remote users enter the IP address in their browser of an interface configured to accept SSL VPN connections. Unless the security appliance is configured to redirect http:// requests to https://, users must enter the URL in the form https://<address>.

After entering the URL, the browser connects to that interface and displays the login screen. If the user satisfies the login and authentication, and the security appliance identifies the user as requiring the client, it downloads the client that matches the operating system of the remote computer. After downloading, the client installs and configures itself, establishes a secure SSL connection and either remains or uninstalls itself (depending on the security appliance configuration) when the connection terminates.

In the case of a previously installed client, when the user authenticates, the security appliance examines the revision of the client and upgrades the client as necessary.

When the client negotiates an SSL VPN connection with the security appliance, it connects using Transport Layer Security (TLS), and optionally, Datagram Transport Layer Security (DTLS). DTLS avoids latency and bandwidth problems associated with some SSL connections, and improves the performance of real-time applications that are sensitive to packet delays.

The AnyConnect client can be downloaded from the security appliance, or it can be installed manually on the remote PC by the system administrator. Refer to [Cisco AnyConnect VPN Client Administrator Guide](#) for more information on how to install the client manually.

The security appliance downloads the client based on the group policy or username attributes of the user establishing the connection. You can configure the security appliance to automatically download the client, or you can configure it to prompt the remote user about whether to download the client. In the latter case, if the user does not respond, you can configure the security appliance to either download the client after a timeout period or present the login page.

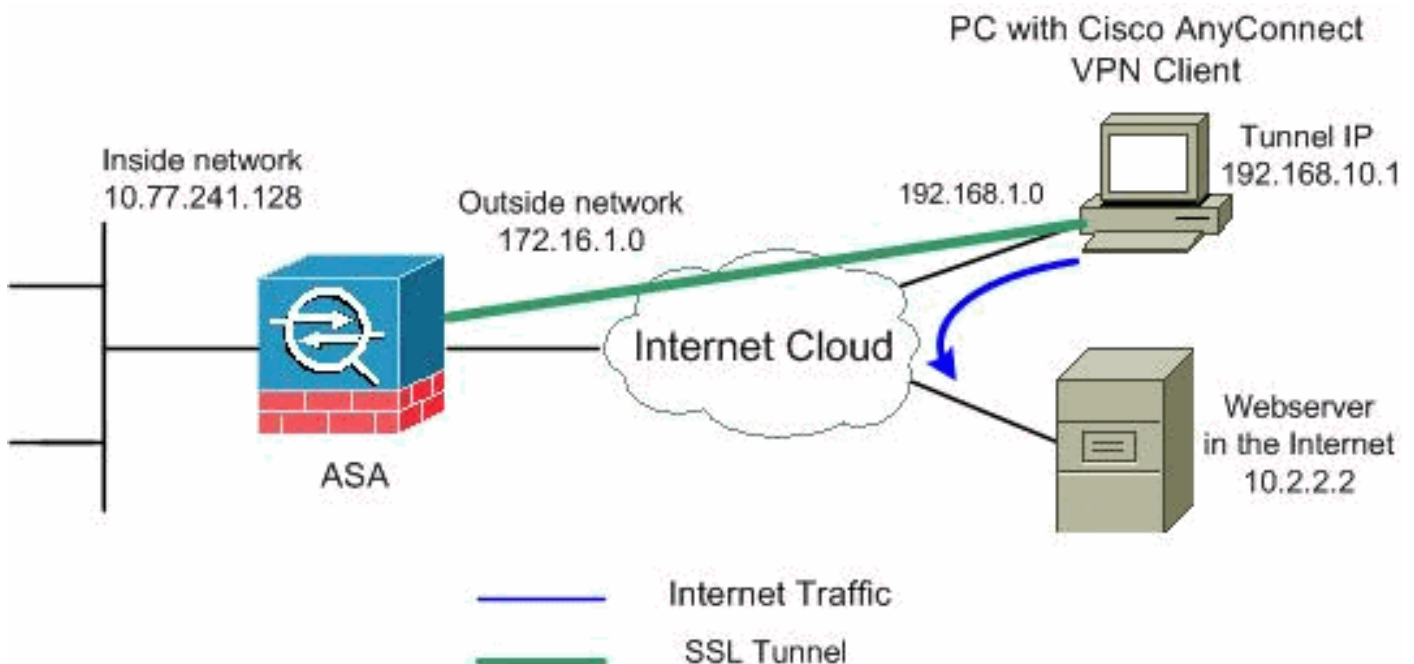
Configure

In this section, you are presented with the information to configure the features described in this document.

Note: Use the [Command Lookup Tool](#) ([registered](#) customers only) to obtain more information on the commands used in this section.

Network Diagram

This document uses this network setup:



Note: The IP addressing schemes used in this configuration are not legally routable on the Internet. They are [RFC 1918](#) addresses which have been used in a lab environment.

ASA Configuration Using ASDM 6.0(2)

This document assumes that the basic configuration, such as interface configuration, is already made and works properly.

Note: Refer to [Allowing HTTPS Access for ASDM](#) in order to allow the ASA to be configured by the ASDM.

Note: WebVPN and ASDM cannot be enabled on the same ASA interface unless you change the port numbers. Refer to [ASDM and WebVPN Enabled on the Same Interface of ASA](#) for more information.

Complete these steps in order to configure the SSL VPN on ASA with split tunneling:

1. Choose **Configuration > Remote Access VPN > Network (Client) Access > Address Management > Address Pools > Add** in order to create an IP address pool

vpnpool.

2. Click **Apply**.Equivalent CLI Configuration:

3. Enable WebVPN.Choose **Configuration > Remote Access VPN > Network (Client) Access > SSL VPN Connection Profiles** and under **Access Interfaces**, click the check boxes **Allow Access** and **Enable DTLS** for the outside interface. Also, check the **Enable Cisco AnyConnect VPN Client or legacy SSL VPN Client access on the interface selected in the table below** check box in order to enable SSL VPN on the outside interface.

Configuration > Remote Access VPN > Network (Client) Access > SSL VPN Connection Profiles

The security appliance automatically deploys the Cisco AnyConnect VPN Client or legacy SSL VPN Client to client deployment requires end-user administrative rights. The Cisco AnyConnect VPN Client supports the Layer Security (DTLS) tunneling options.

(More client-related parameters, such as client images and client profiles, can be found at [Client Settings](#))

Access Interfaces

Enable Cisco AnyConnect VPN Client or legacy SSL VPN Client access on the interfaces selected in the

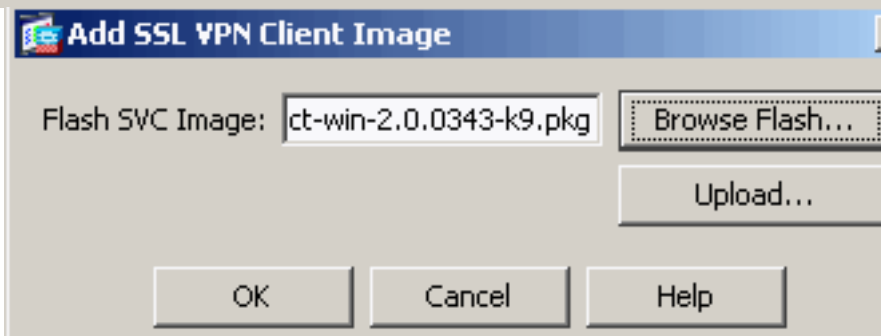
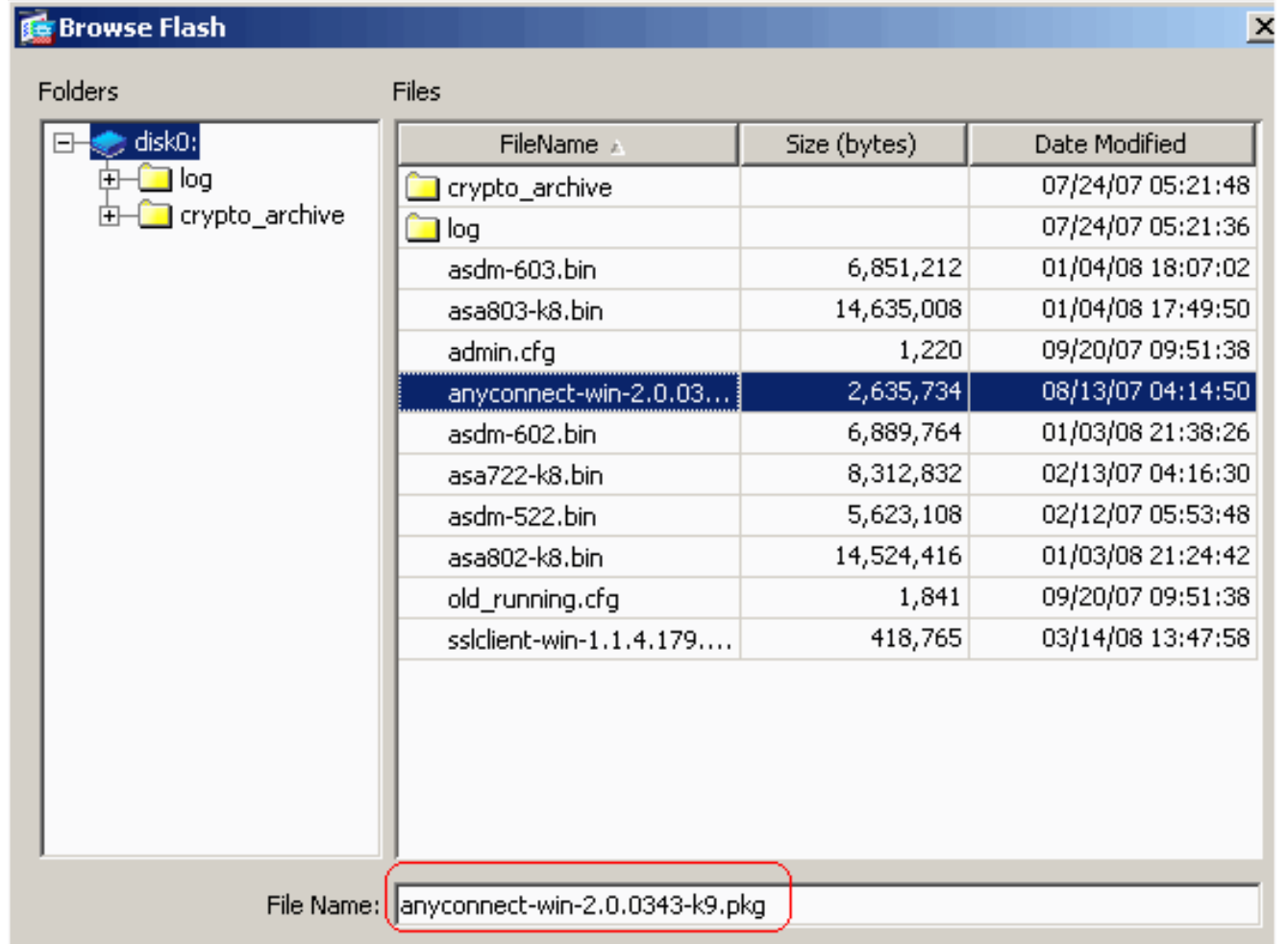
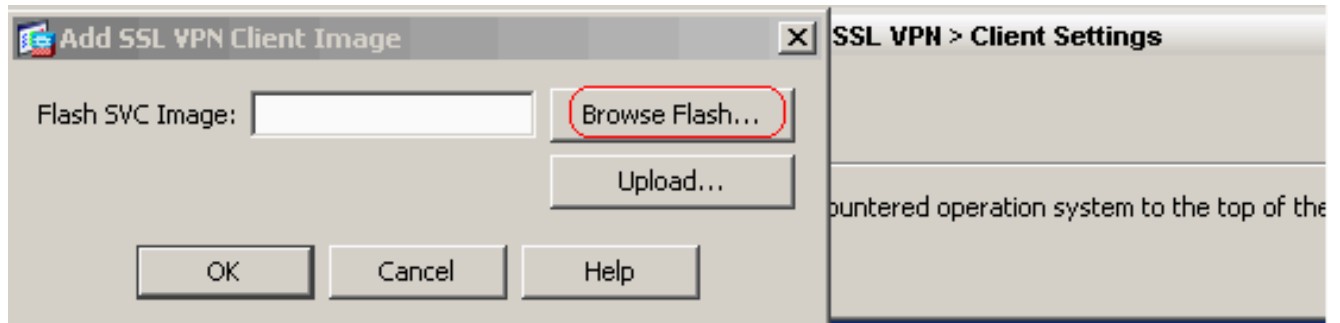
Interface	Allow Access	Require Client Certificate	Enable DTLS
outside	<input checked="" type="checkbox"/>	<input type="checkbox"/>	<input checked="" type="checkbox"/>
inside	<input type="checkbox"/>	<input type="checkbox"/>	<input type="checkbox"/>

Access Port: DTLS Port:

Click here to [Assign Certificate to Interface](#).

Click **Apply**.Choose **Configuration > Remote Access VPN > Network (Client) Access > Advanced > SSL VPN > Client Settings > Add** in order to add the Cisco AnyConnect VPN

client image from the flash memory of ASA as shown.



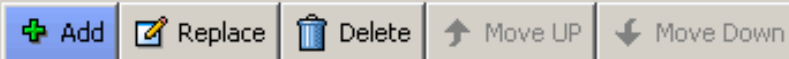
Click **OK**.
Add.

Click

Identify SSL VPN Client (SVC) related files.

SSL VPN Client Images

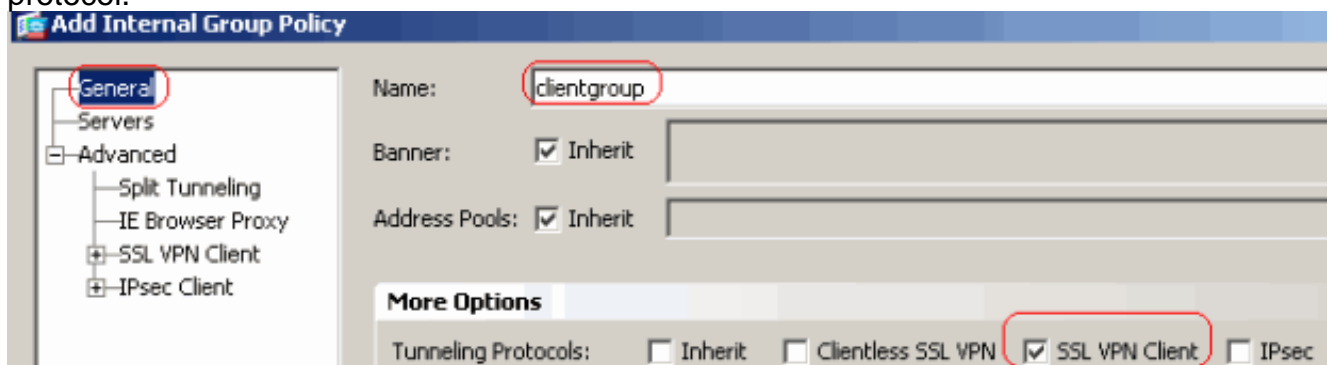
Minimize connection setup time by moving the image used by the most commonly encountered operation system to t



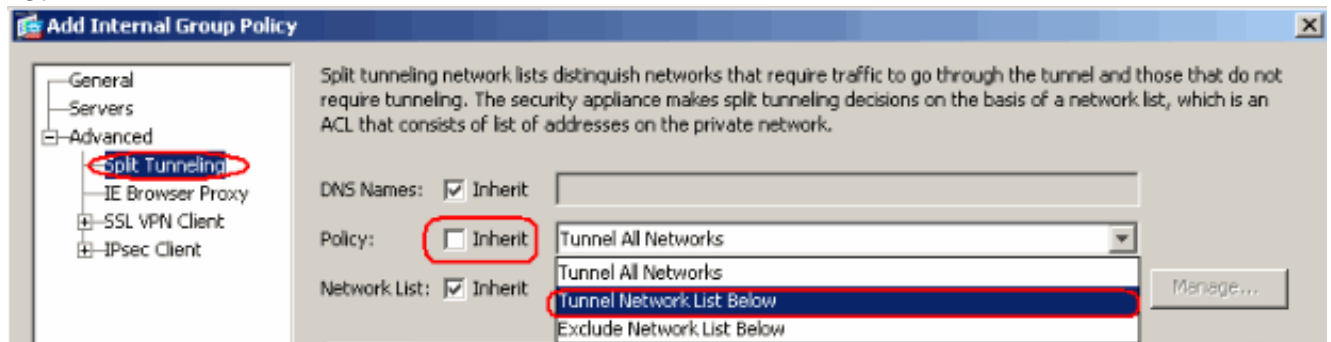
disk0:/anyconnect-win-2.0.0343-k9.pkg

Equivalent CLI Configuration:

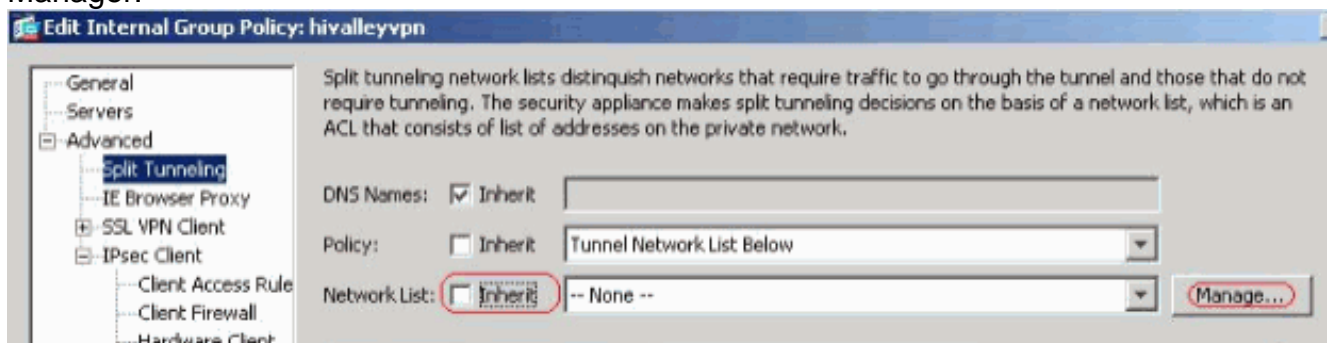
4. Configure Group Policy. Choose **Configuration > Remote Access VPN > Network (Client) Access > Group Policies** in order to create an internal group policy **clientgroup**. Under the **General** tab, select the **SSL VPN Client** check box in order to enable the WebVPN as tunneling protocol.



In the **Advanced > Split Tunneling** tab, uncheck the **Inherit** check box for Split Tunnel Policy and chose **Tunnel Network List Below** from the drop down list.



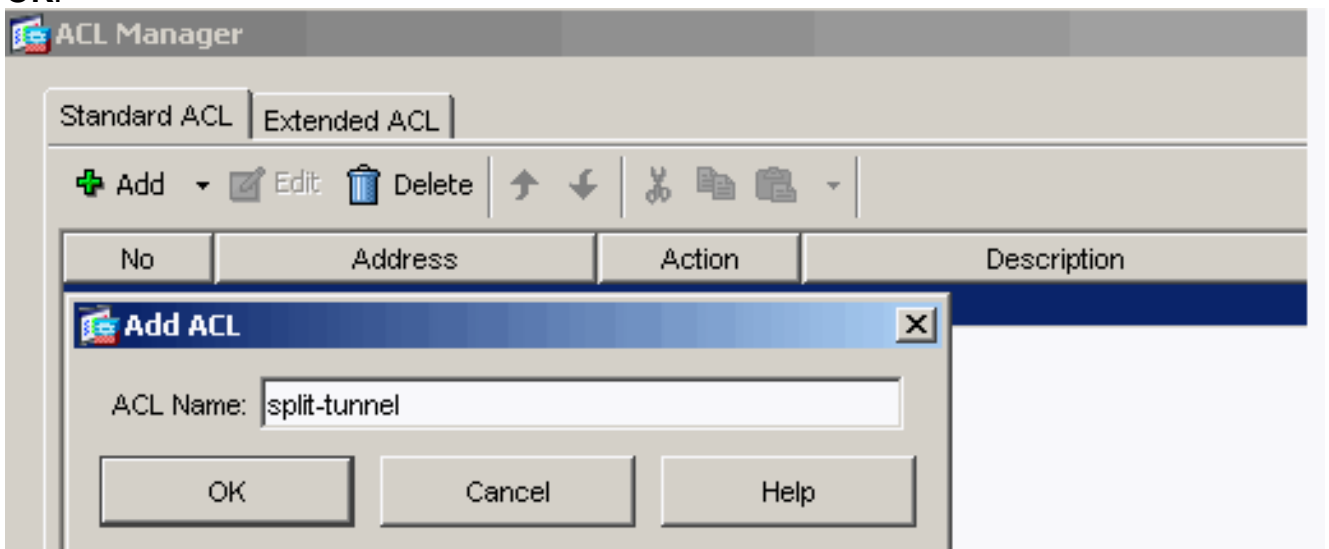
Uncheck the **Inherit** check box for **Split Tunnel Network List** and then click **Manage** in order to launch the ACL Manager.



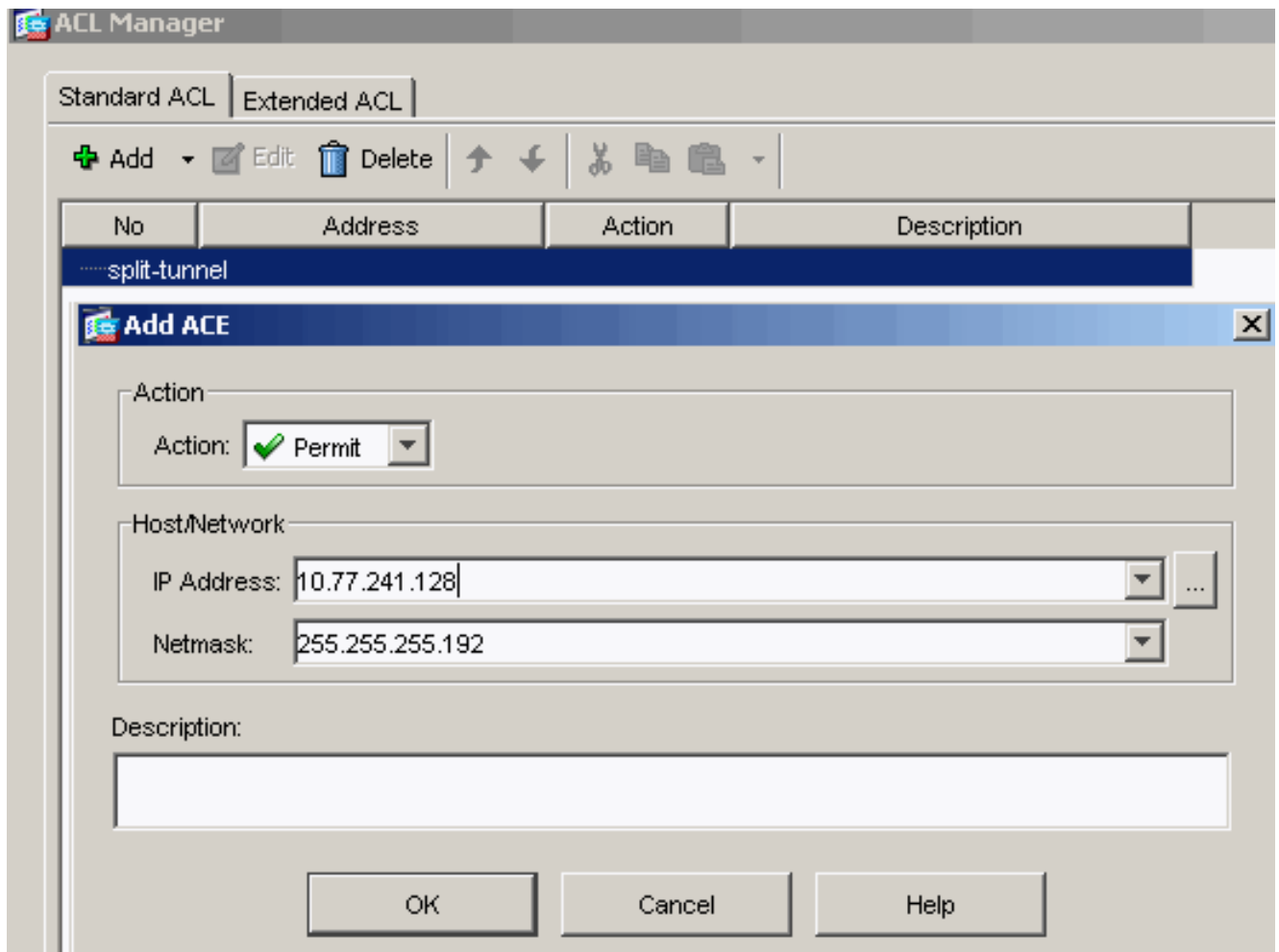
Within the ACL Manager, choose **Add > Add ACL...** in order to create a new access list.



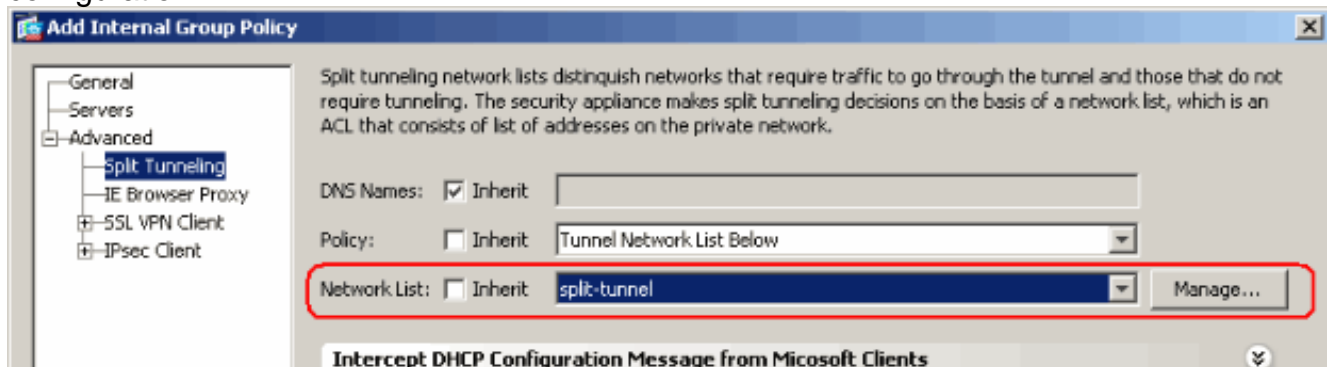
Provide a name for the ACL and click **OK**.



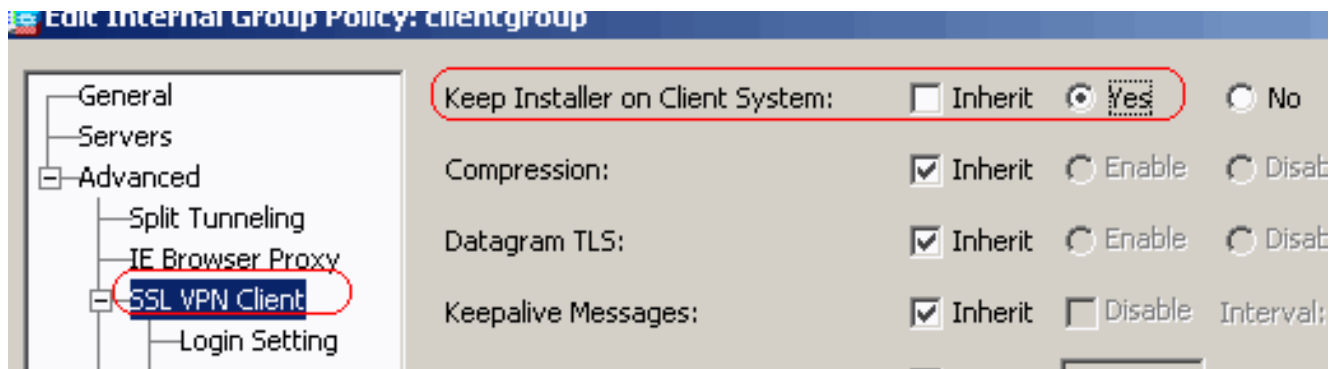
Once the ACL name is created, choose **Add > Add ACE** in order to add an Access Control Entry (ACE). Define the ACE that corresponds to the LAN behind the ASA. In this case, the network is 10.77.241.128/26 and select **Permit** as the Action. Click **OK** in order to exit the ACL Manager.



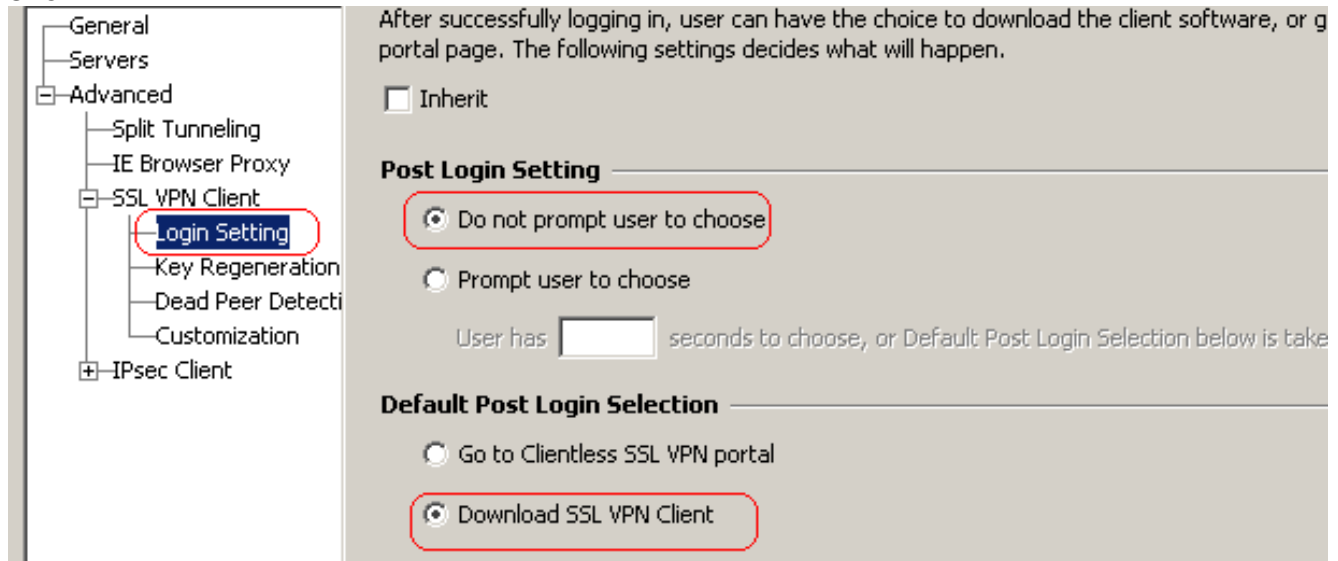
Make sure that the ACL you just created is selected for the split-tunnel Network List. Click **OK** in order to return to the Group Policy configuration.



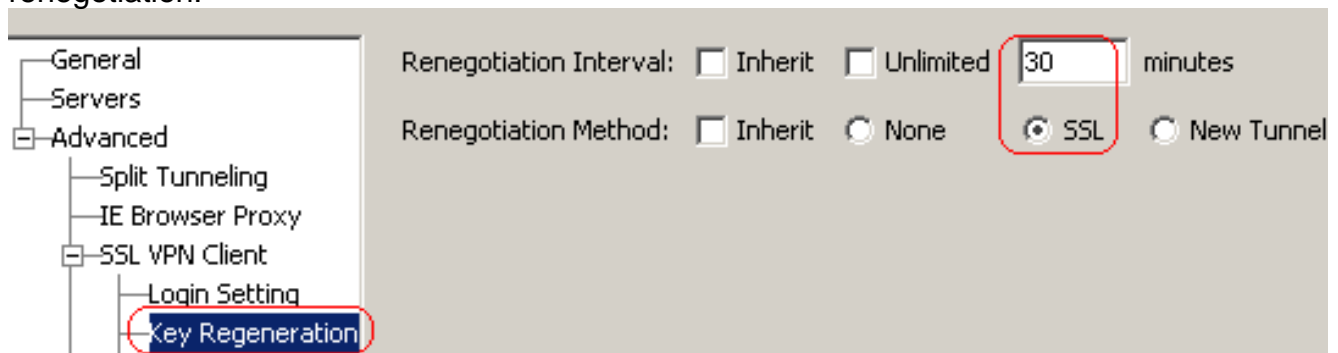
On the main page, click **Apply** and then Send (if required) in order to send the commands to the ASA. Configure the **SSL VPN** settings under Group policy mode. For the Keep Installer on Client System option, uncheck the **Inherit** check box, and click the **Yes** radio button. This action allows the SVC software to remain on the client machine. Therefore, the ASA is not required to download the SVC software to the client each time a connection is made. This option is a good choice for remote users who often access the corporate network.



Click **Login Setting** in order to set the **Post Login Setting** and **Default Post Login Selection** as shown.



For the Renegotiation Interval option, uncheck the **Inherit** box, uncheck the **Unlimited** check box, and enter the number of minutes until rekey. Security is enhanced by setting limits on the length of time a key is valid. For the Renegotiation Method option, uncheck the **Inherit** check box, and click the **SSL** radio button. Renegotiation can use the present SSL tunnel or a new tunnel created expressly for renegotiation.



Click **OK** and then **Apply**.

Configuration > Remote Access VPN > Network (Client) Access > Group Policies

Manage VPN group policies. A VPN group policy is a collection of user-oriented attribute/value pairs that may be stored internally or externally on a RADIUS/LDAP server. The group policy information is referenced by VPN tunnel groups and user accounts.

+ Add Edit Delete

Name	Type	Tunneling Protocol	
clientgroup	Internal	svc	-- N/A -
DfltGrpPolicy (System Default)	Internal	L2TP-IPSec,IPSec,webvpn	-- N/A -

Equivalent CLI Configuration:

5. Choose **Configuration > Remote Access VPN > AAA Setup > Local Users > Add** in order to create a new user account **ssluser1**. Click **OK** and then

Apply.

Add User Account

Identity
+ VPN Policy

Username:

Password:

Confirm Password:

User authenticated using MSCHAP

Member-of

Member-of:

Access Restriction

Select one of the options below to restrict ASDM, SSH, Telnet and Console access.
Note: All users have network access, regardless of these settings.

Full access(ASDM, SSH, Telnet and Console)
Privilege level is used with command authorization.
Privilege Level:

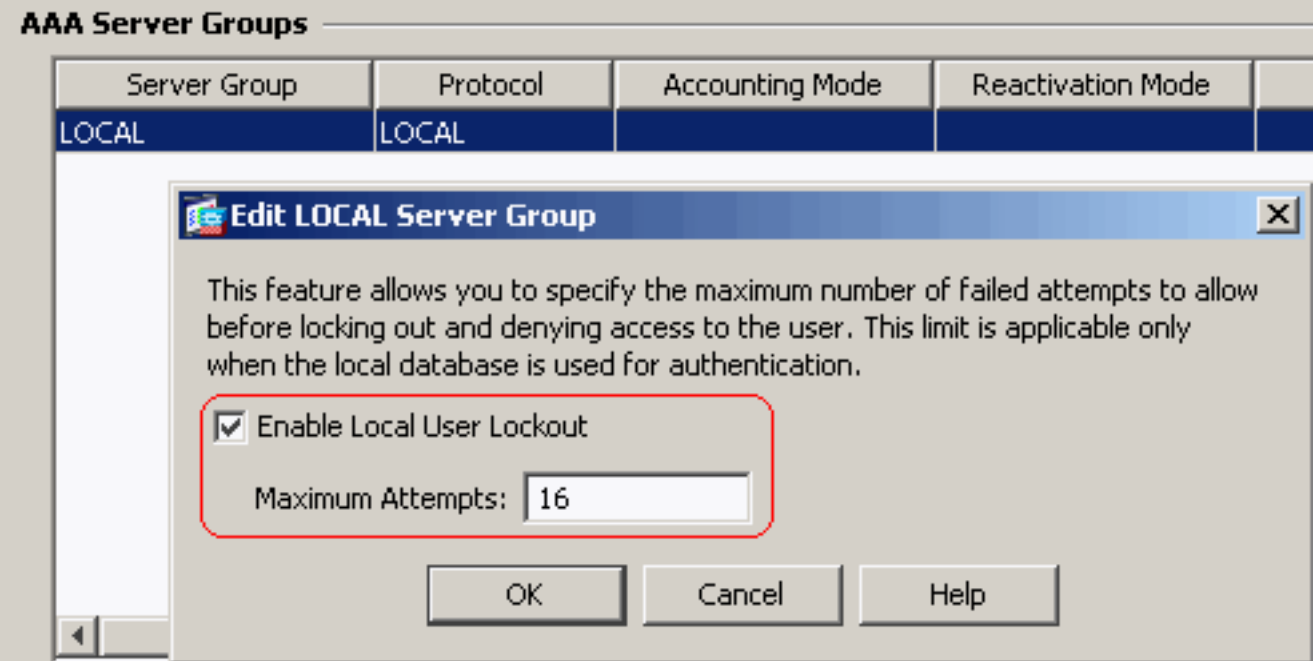
CLI login prompt for SSH, Telnet and console (no ASDM access)
This setting is effective only if AAA authenticate console command is configured.

No ASDM, SSH, Telnet or Console access
This setting is effective only if AAA authenticate console command is configured.

Equivalent CLI Configuration:

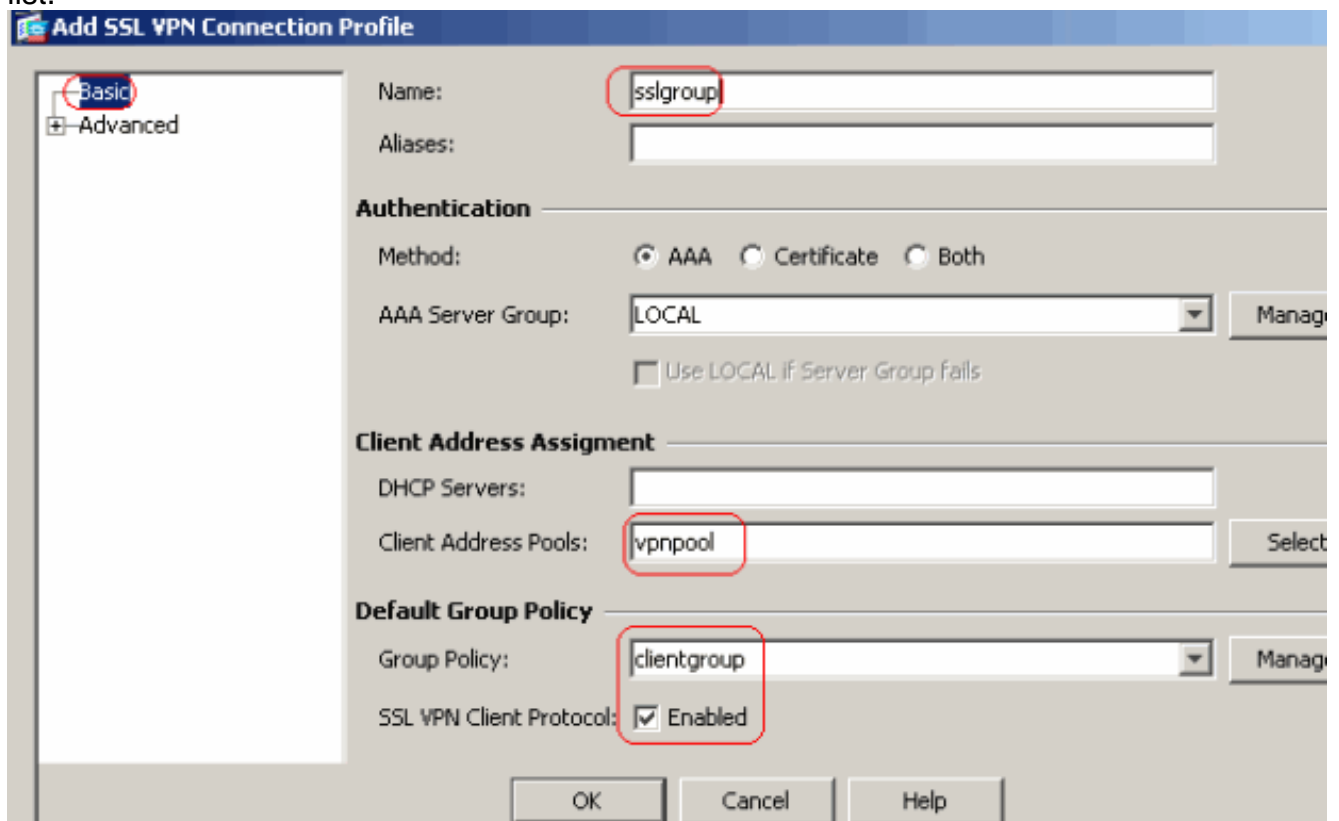
6. Choose **Configuration > Remote Access VPN > AAA Setup > AAA Servers Groups > Edit** in order to modify the default server group LOCAL by checking the **Enable Local User Lockout** check box with maximum attempts value as **16**.

Configuration > Remote Access VPN > AAA Setup > AAA Server Groups

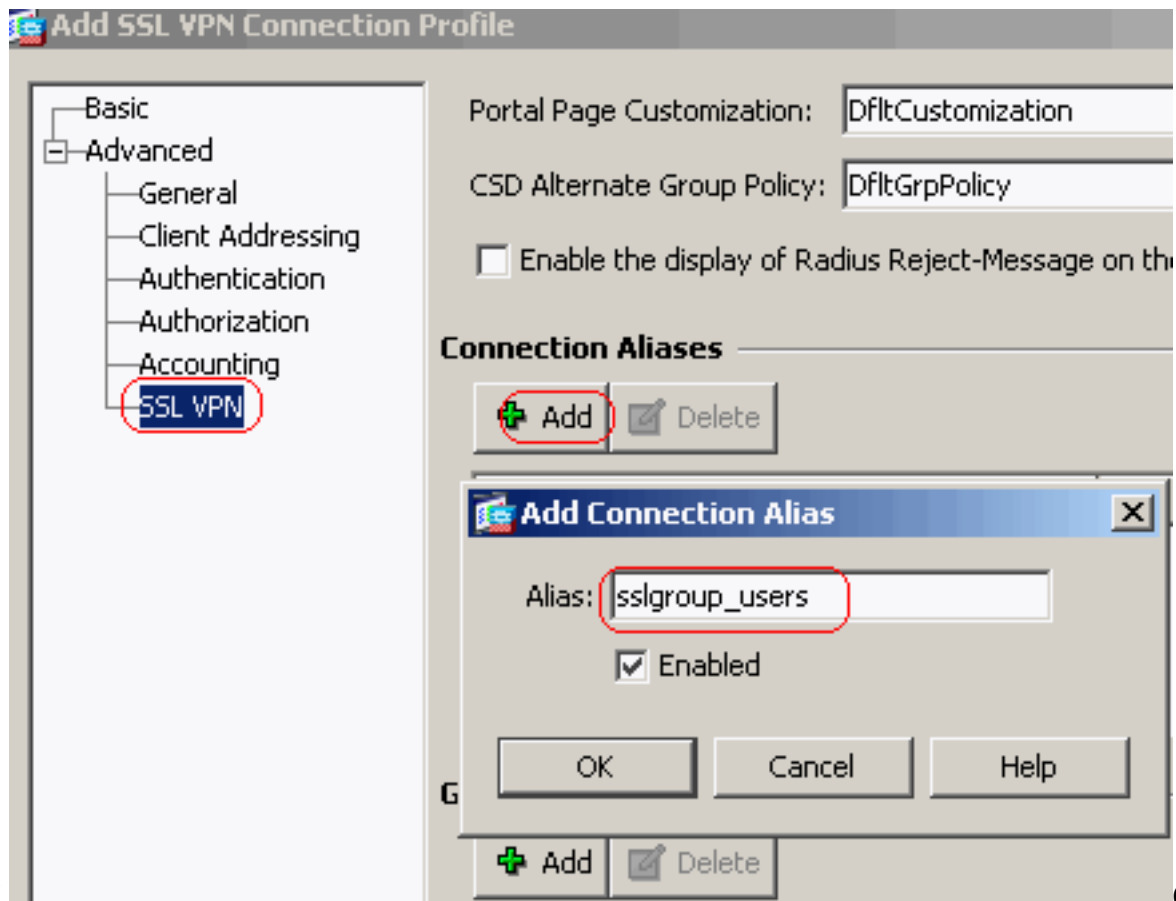


7. Click **OK** and then **Apply**. Equivalent CLI Configuration:

8. Configure Tunnel Group. Choose **Configuration > Remote Access VPN > Network (Client) Access > SSL VPN Connection Profiles Connection Profiles > Add** in order to create a new tunnel group **sslgroup**. In the **Basic** tab, you can perform the list of configurations as shown: Name the Tunnel group as **sslgroup**. Under Client Address Assignment, choose the address pool **vpnpool** from the drop down list. Under Default Group Policy, choose the group policy **clientgroup** from the drop down list.



Under the **SSL VPN > Connection Aliases** tab, specify the group alias name as **sslgroup_users** and click

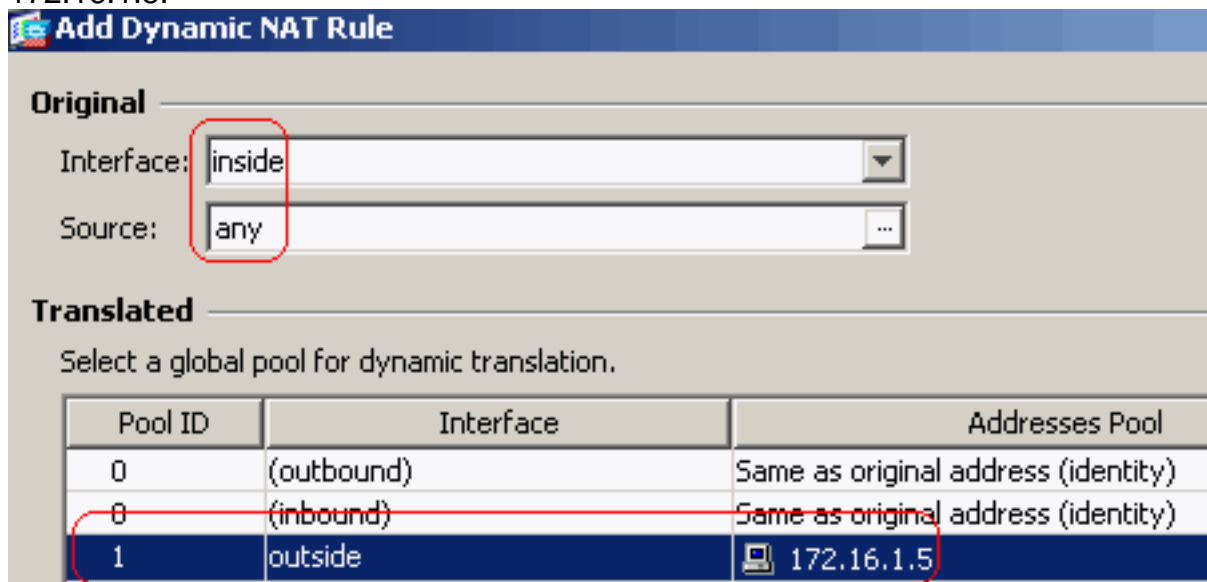


OK.

Click

OK and then **Apply**. Equivalent CLI Configuration:

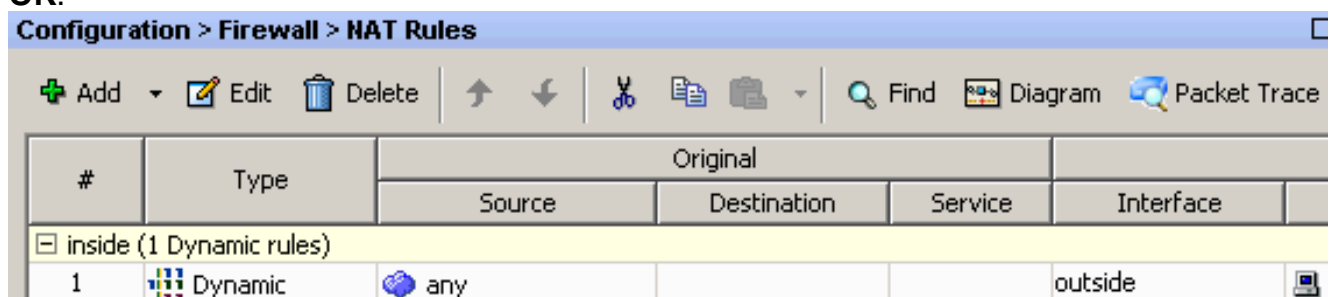
- Configure NAT. Choose **Configuration > Firewall > NAT Rules > Add Dynamic NAT Rule** so the traffic that comes from the inside network can be translated with outside IP address 172.16.1.5.



Click

OK. Click

OK.



Click Apply.Equivalent CLI Configuration:

10. Configure the nat-exemption for the return-traffic from inside network to the VPN

```
client.ciscoasa(config)#access-list nonat permit ip 10.77.241.0 192.168.10.0
ciscoasa(config)#access-list nonat permit ip 192.168.10.0 10.77.241.0 ciscoasa(config)#nat
(inside) 0 access-list nonat
```

ASA CLI Configuration

Cisco ASA 8.0(2)

```
ciscoasa(config)#show running-config : Saved : ASA
Version 8.0(2) ! hostname ciscoasa domain-name
default.domain.invalid enable password 8Ry2YjIyt7RRXU24
encrypted names ! interface Ethernet0/0 nameif inside
security-level 100 ip address 10.77.241.142
255.255.255.192 ! interface Ethernet0/1 nameif outside
security-level 0 ip address 172.16.1.1 255.255.255.0 !
interface Ethernet0/2 shutdown no nameif no security-
level no ip address ! interface Ethernet0/3 shutdown no
nameif no security-level no ip address ! interface
Management0/0 shutdown no nameif no security-level no ip
address ! passwd 2KFQnbNIdI.2KYOU encrypted boot system
disk0:/asa802-k8.bin ftp mode passive clock timezone IST
5 30 dns server-group DefaultDNS domain-name
default.domain.invalid access-list split-tunnel standard
permit 10.77.241.128 255.255.255.192 !--- ACL for Split
Tunnel network list for encryption. access-list nonat
permit ip 10.77.241.0 192.168.10.0 access-list nonat
permit ip 192.168.10.0 10.77.241.0 !--- ACL to define
the traffic to be exempted from NAT. pager lines 24
logging enable logging asdm informational mtu inside
1500 mtu outside 1500 ip local pool vpnpool
192.168.10.1-192.168.10.254 mask 255.255.255.0 !--- The
address pool for the Cisco AnyConnect SSL VPN Clients no
failover icmp unreachable rate-limit 1 burst-size 1 asdm
image disk0:/asdm-602.bin no asdm history enable arp
timeout 14400 global (outside) 1 172.16.1.5 !--- The
global address for Internet access used by VPN Clients.
!--- Note: Uses an RFC 1918 range for lab setup. !---
Apply an address from your public range provided by your
ISP. nat (inside) 0 access-list nonat !--- The traffic
permitted in "nonat" ACL is exempted from NAT. nat
(inside) 1 0.0.0.0 0.0.0.0 route outside 0.0.0.0 0.0.0.0
172.16.1.2 1 timeout xlate 3:00:00 timeout conn 1:00:00
half-closed 0:10:00 udp 0:02:00 icmp 0:00:02 timeout
sunrpc 0:10:00 h323 0:05:00 h225 1:00:00 mgcp 0:05:00
mgcp-pat 0:05:00 timeout sip 0:30:00 sip_media 0:02:00
sip-invite 0:03:00 sip-disconnect 0:02:00 timeout uauth
0:05:00 absolute dynamic-access-policy-record
DfltAccessPolicy http server enable http 0.0.0.0 0.0.0.0
inside no snmp-server location no snmp-server contact
snmp-server enable traps snmp authentication linkup
linkdown coldstart no crypto isakmp nat-traversal telnet
timeout 5 ssh timeout 5 console timeout 0 threat-
detection basic-threat threat-detection statistics
access-list ! class-map inspection_default match
default-inspection-traffic ! ! policy-map type inspect
dns preset_dns_map parameters message-length maximum 512
policy-map global_policy class inspection_default
inspect dns preset_dns_map inspect ftp inspect h323 h225
inspect h323 ras inspect netbios inspect rsh inspect
rtsp inspect skinny inspect esmtp inspect sqlnet inspect
```

```

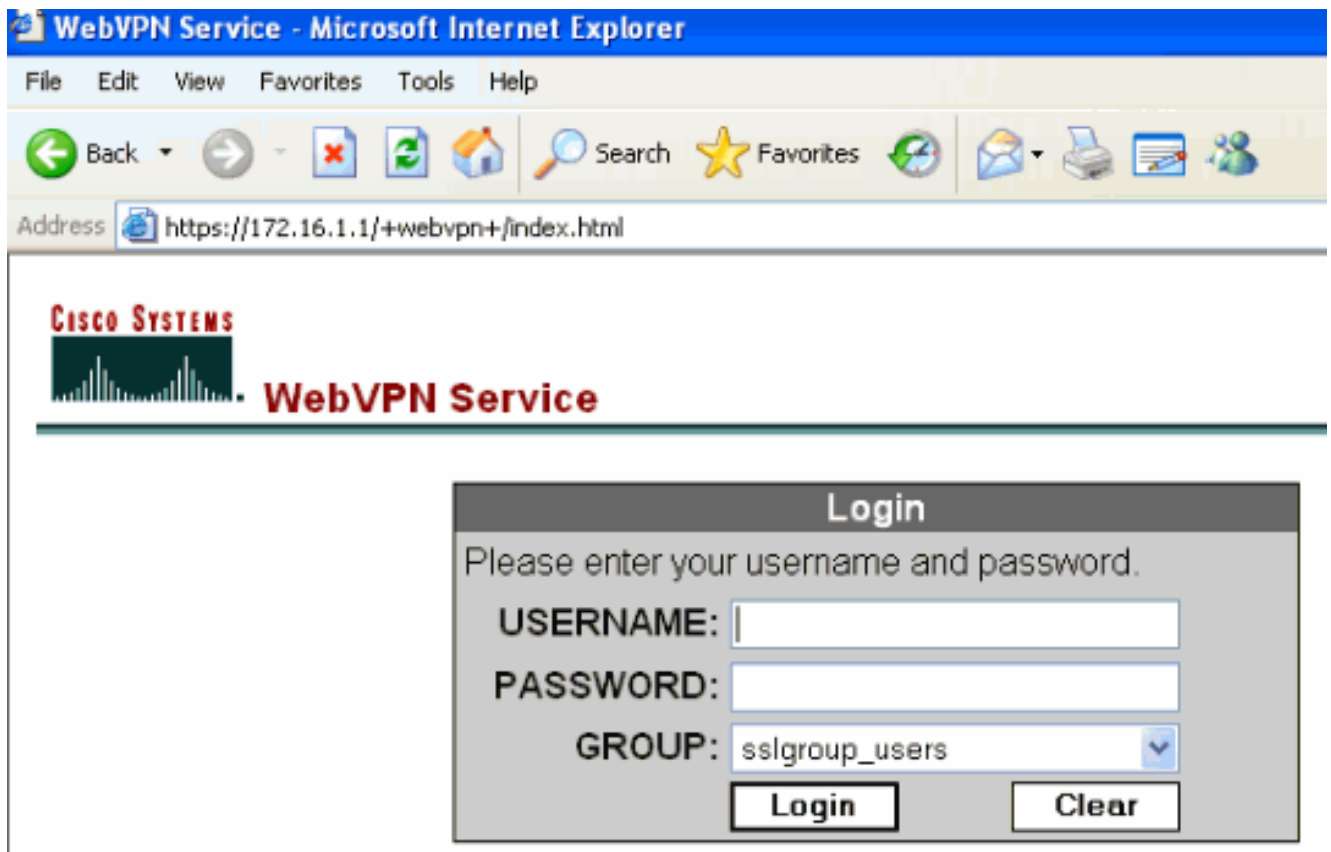
sunrpc inspect tftp inspect sip inspect xdmcp ! service-
policy global_policy global webvpn enable outside !---
Enable WebVPN on the outside interface svc image
disk0:/anyconnect-win-2.0.0343-k9.pkg 1 !--- Assign an
order to the AnyConnect SSL VPN Client image svc enable
!--- Enable the security appliance to download SVC
images to remote computers tunnel-group-list enable !---
Enable the display of the tunnel-group list on the
WebVPN Login page group-policy clientgroup internal !---
Create an internal group policy "clientgroup" group-
policy clientgroup attributes vpn-tunnel-protocol svc !-
-- Specify SSL as a permitted VPN tunneling protocol
split-tunnel-policy tunnelspecified split-tunnel-
network-list value split-tunnel !--- Encrypt the traffic
specified in the split tunnel ACL only webvpn svc keep-
installer installed !--- When the security appliance and
the SVC perform a rekey, they renegotiate !--- the
crypto keys and initialization vectors, increasing the
security of the connection. svc rekey time 30 !---
Command that specifies the number of minutes from the
start of the !--- session until the rekey takes place,
from 1 to 10080 (1 week). svc rekey method ssl !---
Command that specifies that SSL renegotiation takes
place during SVC rekey. svc ask none default svc
username ssluser1 password ZRhW85jZqEaVd5P. encrypted !-
-- Create a user account "ssluser1" tunnel-group
sslgroup type remote-access !--- Create a tunnel group
"sslgroup" with type as remote access tunnel-group
sslgroup general-attributes address-pool vpnpool !---
Associate the address pool vpnpool created default-
group-policy clientgroup !--- Associate the group policy
"clientgroup" created tunnel-group sslgroup webvpn-
attributes group-alias sslgroup_users enable !---
Configure the group alias as sslgroup-users prompt
hostname context
Cryptochecksum:af3c4bfc4ffc07414c4dfbd29c5262a9 : end
ciscoasa(config)#

```

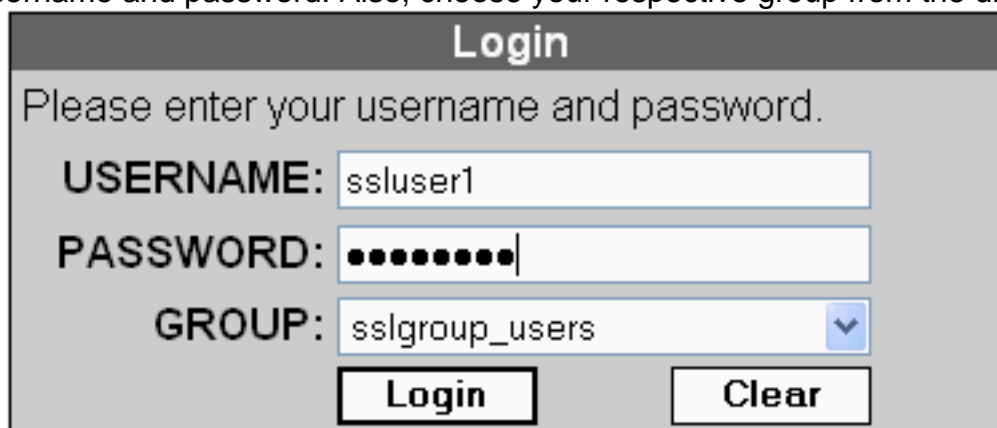
Establish the SSL VPN Connection with SVC

Complete these steps in order to establish a SSL VPN connection with ASA:

1. Enter the URL or IP address of the ASA's WebVPN interface in your web browser in the format as shown. `https://urlORhttps://<IP address of the ASA WebVPN interface>`



2. Enter your username and password. Also, choose your respective group from the drop down



list as shown.

This window appears before the SSL VPN connection is established.

This



Cisco AnyConnect VPN Client



VPN Client Downloader



Please wait while the VPN connection is established.

Cancel



- Microsoft Java

- Sun Java

- Download

- Connected

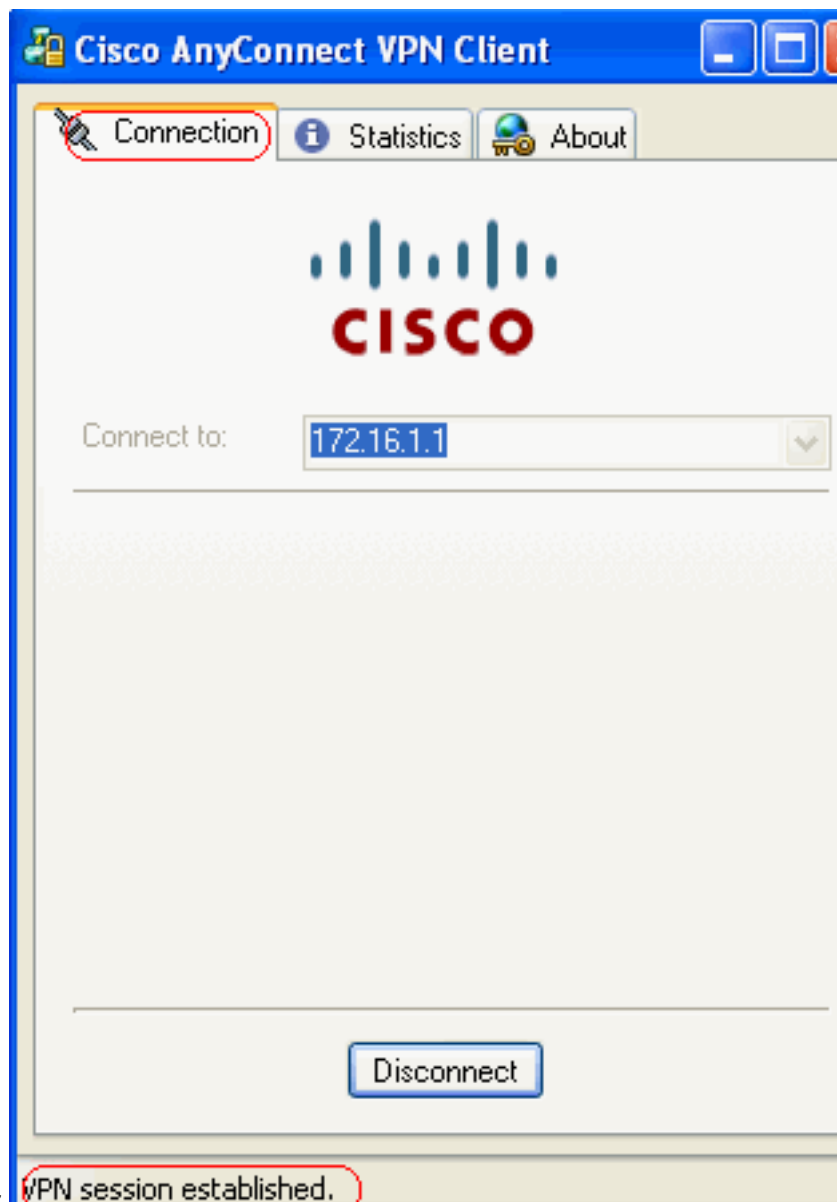
Help

Cancel

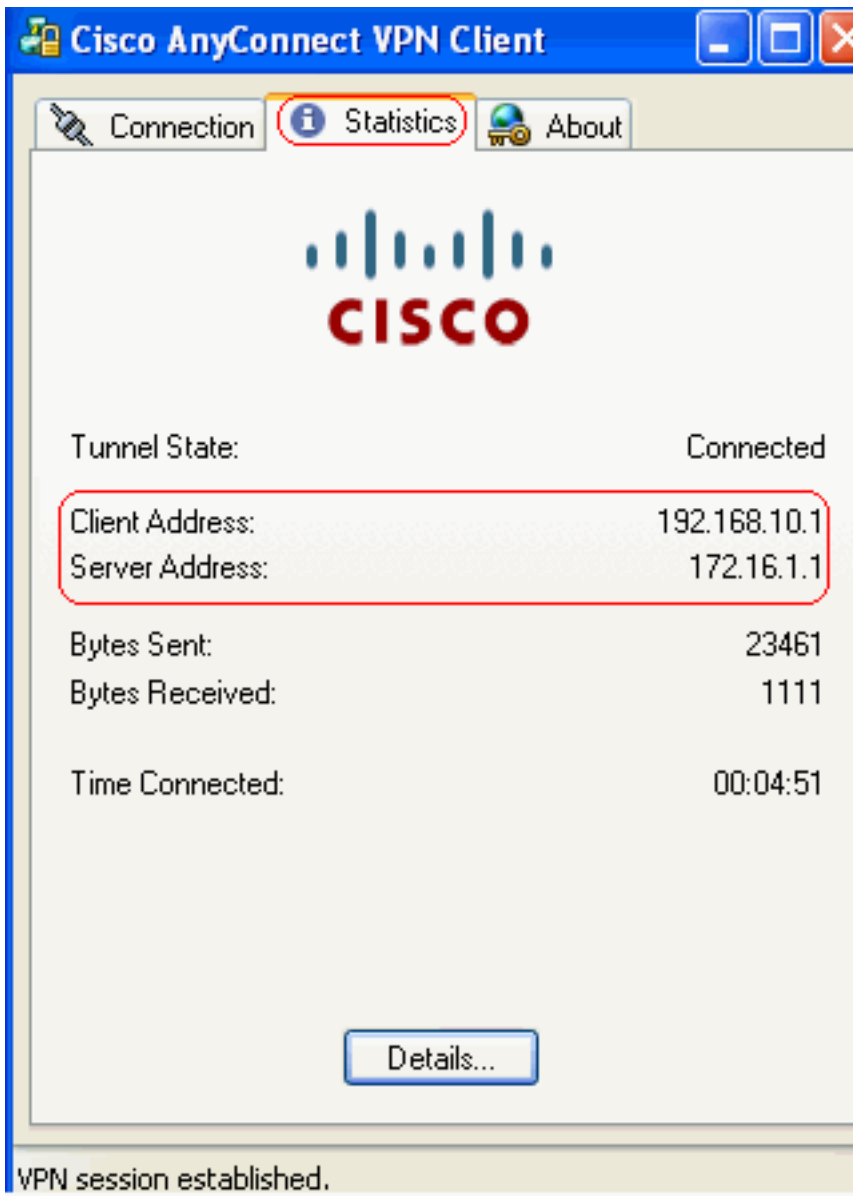
ote: ActiveX software must be installed in your computer before you download the SVC. You receive this window once the connection is established.



3. Click the lock which appears in the task bar of your



computer. This window appears and provides information about the SSL connection. For example, **192.168.10.1** is the assigned IP by the ASA,



etc. VPN session established.

This window shows the

Cisco AnyConnect VPN Client Version



information. VPN session established

Verify

Use this section to confirm that your configuration works properly.

The [Output Interpreter Tool](#) ([registered](#) customers only) (OIT) supports certain **show** commands. Use the OIT to view an analysis of **show** command output.

- **show webvpn svc**—Displays the SVC images stored in the ASA flash memory.

```
ciscoasa#show webvpn svc 1. disk0:/anyconnect-win-2.0.0343-k9.pkg 1 CISCO STC win2k+ 2,0,0343 Mon 04/23/2007 4:16:34.63 1 SSL VPN Client(s) installed
```
- **show vpn-sessiondb svc**—Displays the information about the current SSL connections.

```
ciscoasa#show vpn-sessiondb svc Session Type: SVC Username : ssluser1 Index : 12 Assigned IP : 192.168.10.1 Public IP : 192.168.1.1 Protocol : Clientless SSL-Tunnel DTLS-Tunnel Encryption : RC4 AES128 Hashing : SHA1 Bytes Tx : 194118 Bytes Rx : 197448 Group Policy : clientgroup Tunnel Group : sslgroup Login Time : 17:12:23 IST Mon Mar 24 2008 Duration : 0h:12m:00s NAC Result : Unknown VLAN Mapping : N/A VLAN : none
```
- **show webvpn group-alias**—Displays the configured alias for various groups.

```
ciscoasa#show webvpn group-alias Tunnel Group: sslgroup Group Alias: sslgroup_users enabled
```
- In ASDM, choose **Monitoring > VPN > VPN Statistics > Sessions** in order to know the current WebVPN sessions in the ASA.

Monitoring > VPN > VPN Statistics > Sessions

Remote Access	Site-to-Site	SSL VPN			E-mail Proxy	VPN Load Balancing
		Clientless	With Client	Total		
0	0	0	0	0	0	0

Filter By: **SSL VPN Client** -- All Sessions -- Filter

Username IP Address	Group Policy Connection	Protocol Encryption	Login Time Duration	Byt Byt
ssluser1 192.168.10.1	clientgroup sslgroup	Clientless SSL-Tunnel DT... RC4 AES128	17:12:23 IST Mon Mar 24 2008 0h:03m:31s	194118 192474

Troubleshoot

This section provides information you can use to troubleshoot your configuration.

- vpn-sessiondb logoff name <username>** —Command to logoff the SSL VPN session for the particular username.


```
ciscoasa#vpn-sessiondb logoff name ssluser1 Do you want to logoff the VPN session(s)? [confirm] Y INFO: Number of sessions with name "ssluser1" logged off : 1 ciscoasa#Called vpn_remove_uauth: success! webvpn_svc_np_tear_down: no ACL webvpn_svc_np_tear_down: no IPv6 ACL np_svc_destroy_session(0xB000)
```

 Similarly, you can use the **vpn-sessiondb logoff svc** command in order to terminate all the SVC sessions.
- Note:** If the PC goes to standby or hibernate mode, then the SSL VPN connection can be terminated.


```
webvpn_rx_data_cstp webvpn_rx_data_cstp: got message SVC message: t/s=5/16: Client PC is going into suspend mode (Sleep, Hibernate, e tc) Called vpn_remove_uauth: success! webvpn_svc_np_tear_down: no ACL webvpn_svc_np_tear_down: no IPv6 ACL np_svc_destroy_session(0xA000) ciscoasa#show vpn-sessiondb svc INFO: There are presently no active sessions
```
- debug webvpn svc <1-255>** —Provides the real time webvpn events in order to establish the session.

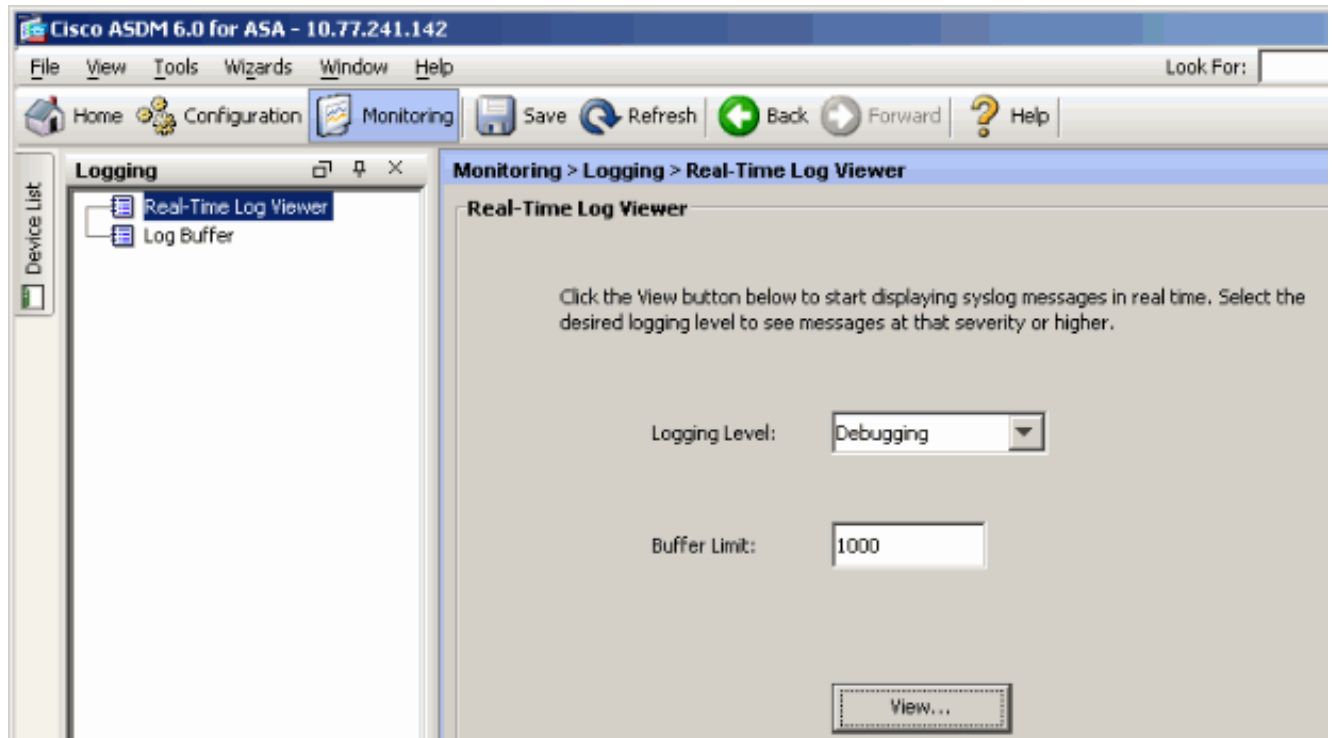

```
Ciscoasa#debug webvpn svc 7 webvpn_rx_data_tunnel_connect CSTP state = HEADER_PROCESSING http_parse_cstp_method() ...input: 'CONNECT /CSCOSSLC/tunnel HTTP/1.1' webvpn_cstp_parse_request_field() ...input: 'Host: 172.16.1.1' Processing CSTP header line: 'Host: 172.16.1.1' webvpn_cstp_parse_request_field() ...input: 'User-Agent: Cisco AnyConnect VPN Client 2, 0, 0343' Processing CSTP header line: 'User-Agent: Cisco AnyConnect VPN Client 2, 0, 0343' Setting user-agent to: 'Cisco AnyConnect VPN Client 2, 0, 0343' webvpn_cstp_parse_request_field() ...input: 'Cookie: webvpn=16885952@12288@1206098825@D251883E8625B92C1338D631B08B7D75F4EDEF26' Processing CSTP header line: 'Cookie: webvpn=16885952@12288@1206098825@D251883E8625B92C1338D631B08B7D75F4EDEF26' Found WebVPN cookie: 'webvpn=16885952@12288@1206098825@D251883E8625B92C1338D631B08B7D75F4EDEF26' WebVPN Cookie: 'webvpn=16885952@12288@1206098825@D251883E8625B92C1338D631B08B7D75F4EDEF26' webvpn_cstp_parse_request_field() ...input: 'X-CSTP-Version: 1' Processing CSTP header line: 'X-CSTP-Version: 1' Setting version to '1' webvpn_cstp_parse_request_field() ...input: 'X-CSTP-Hostname: tacweb' Processing CSTP header line: 'X-CSTP-Hostname: tacweb' Setting hostname to: 'tacweb' webvpn_cstp_parse_request_field() ...input: 'X-CSTP-Accept-Encoding: deflate;q=1.0' Processing CSTP header line: 'X-CSTP-Accept-Encoding: deflate;q=1.0' webvpn_cstp_parse_request_field() ...input: 'X-CSTP-MTU: 1206' Processing CSTP header line: 'X-CSTP-MTU: 1206' webvpn_cstp_parse_request_field() ...input: 'X-CSTP-Address-Type: IPv4' Processing CSTP header line: 'X-CSTP-Address-Type: IPv4' webvpn_cstp_parse_request_field() ...input: 'X-DTLS-Master-Secret: CE151BA2107437EDE5EC4F5EE6AEBAC12031550B1812D40642E22C6AFCB9501758FF3B7B5545973C06F6393C92E59693' Processing CSTP header line: 'X-DTLS-Master-Secret: CE151BA2107437EDE5EC4F5EE6AEBAC12031550B1812D40642E22C6AFCB9501758FF3B7B5545973C06F6393C92E59693' webvpn_cstp_parse_request_field() ...input: 'X-DTLS-CipherSuite: AES256-SHA:AES128-SHA:DES-
```

```

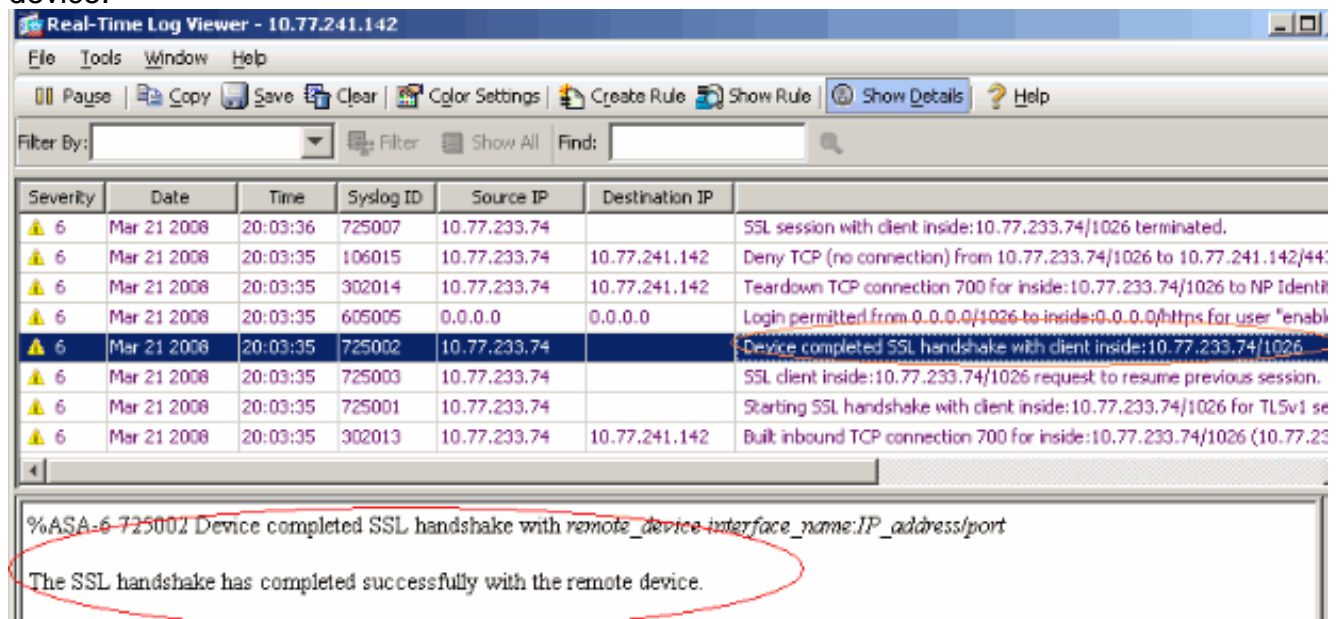
CBC3-SHA:DES-CBC-SHA' Processing CSTP header line: 'X-DTLS-CipherSuite: AES256-SHA:AES128-
SHA:DES-CBC3 -SHA:DES-CBC-SHA' Validating address: 0.0.0.0 CSTP state = WAIT_FOR_ADDRESS
webvpn_cstp_accept_address: 192.168.10.1/0.0.0.0 CSTP state = HAVE_ADDRESS No subnetmask...
must calculate it SVC: NP setup np_svc_create_session(0x3000, 0xD41611E8, TRUE)
webvpn_svc_np_setup SVC ACL Name: NULL SVC ACL ID: -1 SVC ACL ID: -1 vpn_put_uauth success!
SVC IPv6 ACL Name: NULL SVC IPv6 ACL ID: -1 SVC: adding to sessgmt SVC: Sending response
Unable to initiate NAC, NAC might not be enabled or invalid policy CSTP state = CONNECTED
webvpn_rx_data_cstp webvpn_rx_data_cstp: got internal message Unable to initiate NAC, NAC
might not be enabled or invalid policy

```

4. In ASDM, choose **Monitoring > Logging > Real-time Log Viewer > View** in order to see the real time events.



This example shows that the SSL session has been established with the head end device.



Related Information

- [Cisco 5500 Series Adaptive Security Appliance Support Page](#)

- [Release Notes for AnyConnect VPN Client, Release 2.0](#)
- [ASA/PIX: Allow Split Tunneling for VPN Clients on the ASA Configuration Example](#)
- [Router Allows VPN Clients to Connect IPsec and Internet Using Split Tunneling Configuration Example](#)
- [PIX/ASA 7.x and VPN Client for Public Internet VPN on a Stick Configuration Example](#)
- [SSL VPN Client \(SVC\) on ASA with ASDM Configuration Example](#)
- [Technical Support & Documentation - Cisco Systems](#)