

Configuring IPsec Between Hub and Remote PIXes with VPN Client and Extended Authentication

Document ID: 14087

Contents

Introduction

Prerequisites

- Requirements
- Components Used
- Conventions

Background Information

Configure

- Network Diagram
- Configurations

Verify

Troubleshoot

- Troubleshooting Commands
- Debugs from the Hub PIX

Related Information

Introduction

This document illustrates an IPsec configuration that includes both gateway-to-gateway and remote user functionality. With extended authentication (Xauth), the device is authenticated through the pre-shared key and the user is authenticated through a user-name/password challenge.

Prerequisites

Requirements

There are no specific requirements for this document.

Components Used

The information in this document is based on these software and hardware versions:

- PIX Firewall Version 6.3(3)
- Cisco VPN Client Version 3.5
- Cisco Secure ACS for Windows Version 2.6

The information in this document was created from the devices in a specific lab environment. All of the devices used in this document started with a cleared (default) configuration. If your network is live, make sure that you understand the potential impact of any command.

Conventions

Refer to Cisco Technical Tips Conventions for more information on document conventions.

Background Information

In this example, there is a gateway-to-gateway IPsec tunnel from the remote PIX to the hub PIX. This tunnel encrypts the traffic from network 10.48.67.x behind the remote PIX to network 10.48.66.x behind the hub PIX. The PC on the Internet can form an IPsec tunnel through the hub PIX to network 10.48.66.x.

In order to use the Xauth feature, you must first set up your basic authentication, authorization, and accounting (AAA) server. Use the **crypto map client authentication** command to tell the PIX Firewall to use the Xauth (RADIUS/TACACS+ user name and password) challenge during Phase 1 of Internet Key Exchange (IKE) in order to authenticate IKE. If the Xauth fails, the IKE security association is not established. Specify the same AAA server name within the **crypto map client authentication** command statement that is specified in the **aaa-server** command statement. The remote user must run Cisco VPN Client version 3.x. or later.

Note: Cisco recommends you use Cisco VPN Client 3.5.x or later. VPN Client 1.1 does not work with this configuration and is out of the scope of this document.

Note: Cisco VPN Client 3.6 and later does not support the transform set of des/sha.

If you need to restore the configuration without Xauth, use the **no crypto map client authentication** command. The Xauth feature is not enabled by default.

Note: Encryption technology is subject to export controls. It is your responsibility to know the law related to the export of encryption technology. Refer to the Bureau of Export Administration home page [for more information](#). Send an E-mail to export@cisco.com if you have any questions related to export control.

Note: In PIX Firewall Version 5.3 and later, configurable RADIUS ports were introduced. Some RADIUS servers use RADIUS ports other than 1645/1646 (usually 1812/1813). In PIX 5.3 and later, the RADIUS authentication and accounting ports can be changed to ones other than the default 1645/1646 using these commands:

```
aaa-server radius-authport #  
aaa-server radius-acctport #
```

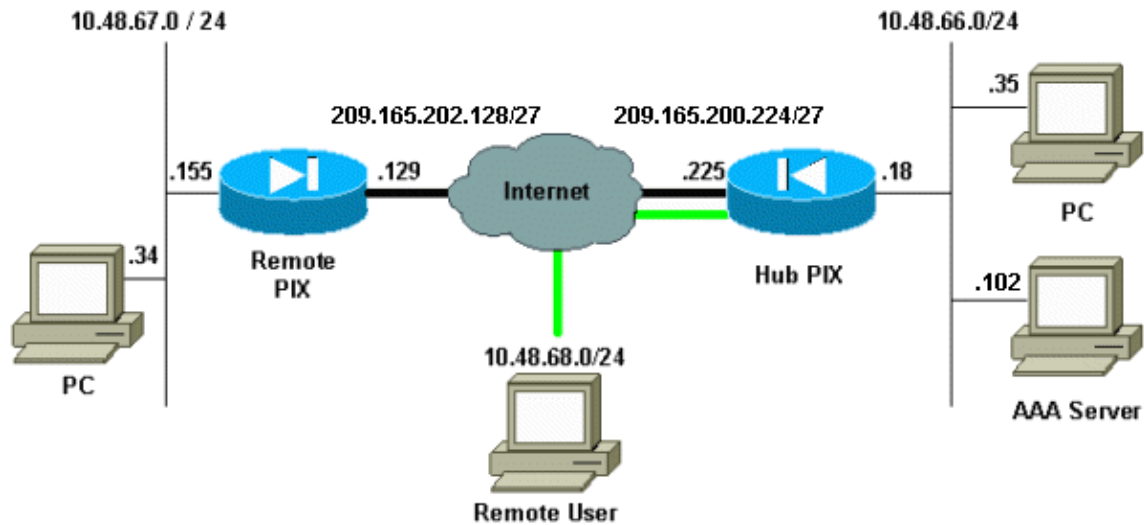
Configure

In this section, you are presented with the information to configure the features described in this document.

Note: Use the Command Lookup Tool (registered customers only) to find more information on the commands used in this document.

Network Diagram

This diagram uses green and black bold lines in order to indicate the VPN tunnels.



Configurations

This document uses these configurations.

- Hub PIX
- Remote PIX

Note: For the example in this document, the IP address of the VPN server is 209.165.200.225, the group name is "vpn3000," and the group password is cisco.

Hub PIX Configuration

```
PIX Version 6.3(3)
interface ethernet0 auto
interface ethernet1 auto
nameif ethernet0 outside security0
nameif ethernet1 inside security100
enable password OnTrBUG1Tp0edmkr encrypted
passwd 2KFQnbNIdI.2KYOU encrypted
hostname hubfixup protocol dns maximum-length 512
fixup protocol ftp 21
fixup protocol h323 h225 1720
fixup protocol h323 ras 1718-1719
fixup protocol http 80
fixup protocol rsh 514
fixup protocol rtsp 554
fixup protocol sip 5060
fixup protocol sip udp 5060
fixup protocol skinny 2000
fixup protocol smtp 25
fixup protocol sqlnet 1521
fixup protocol tftp 69
names

!--- Include traffic in the encryption process.

access-list 101 permit ip 10.48.66.0 255.255.255.0 10.48.67.0 255.255.255.0
!--- Accept traffic from the Network Address Translation (NAT) process
access-list nonat permit ip 10.48.66.0 255.255.255.0 10.48.67.0 255.255.255.0
access-list nonat permit ip 10.48.66.0 255.255.255.0 10.48.68.0 255.255.255.0
pager lines 24
mtu outside 1500
mtu inside 1500
ip address outside 209.165.200.225 255.255.255.224
```

```

ip address inside 10.48.66.18 255.255.255.0
ip audit info action alarm
ip audit attack action alarm
ip local pool mypool 10.48.68.1-10.48.68.254
no failover
failover timeout 0:00:00
failover poll 15
no failover ip address outside
no failover ip address inside
pdm history enable
arp timeout 14400
global (outside) 1 209.16.200.230-209.16.200.240 netmask 255.255.255.224
global (outside) 1 209.16.200.241

!--- Except traffic from the NAT process.

nat (inside) 0 access-list nonat
nat (inside) 1 10.48.66.0 255.255.255.0 0 0
route outside 0.0.0.0 0.0.0.0 209.165.200.226 1
timeout xlate 3:00:00
timeout conn 1:00:00 half-closed 0:10:00 udp 0:02:00 rpc 0:10:00 h225 1:00:00
timeout h323 0:05:00 mgcp 0:05:00 sip 0:30:00 sip_media 0:02:00
timeout uauth 0:05:00 absolute
aaa-server TACACS+ protocol tacacs+
aaa-server RADIUS protocol radius
aaa-server LOCAL protocol local
aaa-server mytacacs protocol tacacs+
aaa-server mytacacs (inside) host 10.48.66.102 cisco timeout 5
no snmp-server location
no snmp-server contact
snmp-server community public
no snmp-server enable traps
floodguard enable
sysopt connection permit-ipsec
crypto ipsec transform-set myset esp-des esp-md5-hmac
crypto dynamic-map dynmap 10 set transform-set myset

!--- Use the crypto-map sequence 10 command for PIX to PIX.

crypto map mymap 10 ipsec-isakmp
crypto map mymap 10 match address 101
crypto map mymap 10 set peer 209.165.202.129
crypto map mymap 10 set transform-set myset

!--- Use the crypto-map sequence 20 command for PIX to VPN Client.

crypto map mymap 20 ipsec-isakmp dynamic dynmap
crypto map mymap client authentication mytacacs
crypto map mymap interface outside
isakmp enable outside
isakmp key ***** address 209.165.202.129 netmask 255.255.255.255
isakmp identity address
isakmp policy 10 authentication pre-share
isakmp policy 10 encryption des
isakmp policy 10 hash md5

!--- ISAKMP policy for VPN Client that runs 3.x code needs to be DH group 2.

isakmp policy 10 group 2
isakmp policy 10 lifetime 86400

!--- IPsec group configuration for VPN Client.

vpngroup vpn3000 address-pool mypool
vpngroup vpn3000 dns-server 10.48.66.129
vpngroup vpn3000 wins-server 10.48.66.129

```

```
vpngroup vpn3000 default-domain cisco.com
vpngroup vpn3000 idle-time 1800
vpngroup vpn3000 password *****
telnet timeout 5
ssh timeout 5
console timeout 0
terminal width 80
Cryptochecksum:7293dd9fc7c58ff5d65f042dd6ddb13
: end
```

Remote PIX Configuration

```
PIX Version 6.3(3)
interface ethernet0 auto
interface ethernet1 100basetx
interface ethernet2 auto shutdown
nameif ethernet0 outside security0
nameif ethernet1 inside security100
nameif ethernet2 intf2 security4
enable password OnTrBUG1Tp0edmkr encrypted
passwd 2KFQnbNIdI.2KYOU encrypted
hostname remote
fixup protocol dns maximum-length 512
fixup protocol ftp 21
fixup protocol h323 h225 1720
fixup protocol h323 ras 1718-1719
fixup protocol http 80
fixup protocol rsh 514
fixup protocol rtsp 554
fixup protocol sip 5060
fixup protocol sip udp 5060
fixup protocol skinny 2000
fixup protocol smtp 25
fixup protocol sqlnet 1521
fixup protocol tftp 69
names
access-list 101 permit ip 10.48.67.0 255.255.255.0 10.48.66.0 255.255.255.0

!--- Accept traffic from the NAT process.

access-list nonat permit ip 10.48.67.0 255.255.255.0 10.48.66.0 255.255.255.0
pager lines 24
mtu outside 1500
mtu inside 1500
mtu intf2 1500
ip address outside 209.165.202.129 255.255.255.224
ip address inside 10.48.67.155 255.255.255.0
no ip address intf2
ip audit info action alarm
ip audit attack action alarm
no failover
failover timeout 0:00:00
failover poll 15
no failover ip address outside
no failover ip address inside
no failover ip address intf2
pdm history enable
arp timeout 14400
global (outside) 1 209.16.202.135-209.16.202.145 netmask 255.255.255.224
global (outside) 1 209.16.202.146

!--- Except traffic from the NAT process.

nat (inside) 0 access-list nonat
nat (inside) 1 10.48.0.0 255.255.255.0 0 0
```

```

nat (inside) 1 10.48.67.0 255.255.255.0 0 0
route outside 0.0.0.0 0.0.0.0 209.165.202.130 1
timeout xlate 3:00:00
timeout conn 1:00:00 half-closed 0:10:00 udp 0:02:00 rpc 0:10:00 h225 1:00:00
timeout h323 0:05:00 mgcp 0:05:00 sip 0:30:00 sip_media 0:02:00
timeout uauth 0:05:00 absolute
aaa-server TACACS+ protocol tacacs+
aaa-server RADIUS protocol radius
aaa-server LOCAL protocol local
no snmp-server location
no snmp-server contact
snmp-server community public
no snmp-server enable traps
floodguard enable
sysopt connection permit-ipsec
crypto ipsec transform-set myset esp-des esp-md5-hmac
crypto map mymap 10 ipsec-isakmp

!--- Include traffic in the encryption process.

crypto map mymap 10 match address 101
crypto map mymap 10 set peer 209.165.200.225
crypto map mymap 10 set transform-set myset
crypto map mymap interface outside
isakmp enable outside
isakmp key ***** address 209.165.200.225 netmask 255.255.255.255
isakmp identity address
isakmp policy 10 authentication pre-share
isakmp policy 10 encryption des
isakmp policy 10 hash md5
isakmp policy 10 group 2
isakmp policy 10 lifetime 86400
telnet timeout 5
ssh timeout 5
console timeout 0
terminal width 80
Cryptochecksum:13ef4d29384c65c2cd968b5d9396f6e8
: end

```

Refer to the "Configurations" section of Configuring PIX to PIX and VPN Client 3.x for detailed information about how to set up the VPN Client. Also, refer to How to Add AAA Authentication (Xauth) to PIX IPsec 5.2 and Later for additional information on the configuration of AAA Authentication to PIX IPsec.

Verify

This section provides information you can use in order to confirm your configuration works properly.

The Output Interpreter Tool (registered customers only) (OIT) supports certain **show** commands. Use the OIT to view an analysis of **show** command output.

- **show crypto isakmp sa** Shows Phase 1 security associations.
- **show crypto ipsec sa** Shows Phase 2 security associations.

Troubleshoot

This section provides information you can use to troubleshoot your configuration.

Troubleshooting Commands

The Output Interpreter Tool (registered customers only) (OIT) supports certain **show** commands. Use the OIT to view an analysis of **show** command output.

Note: Refer to Important Information on Debug Commands before you use **debug** commands.

These debugs must run on both IPsec routers (peers). Security associations must be cleared on both peers.

- **debug crypto isakmp** Displays errors during Phase 1.
- **debug crypto ipsec** Displays errors during Phase 2.
- **debug crypto engine** Displays information from the crypto engine.
- **clear crypto isakmp sa** Clears the Phase 1 security associations.
- **clear crypto ipsec sa** Clears the Phase 2 security associations.
- **debug radius [session | all | user username]** Available in PIX 6.2, this command logs RADIUS session information and the attributes of sent and received RADIUS packets.
- **debug tacacs [session|user <user_name>]** Available in PIX 6.3, this command logs TACACS information.
- **debug aaa [authentication|authorization|accounting|internal]** Available in PIX 6.3, shows AAA subsystem information.

Debugs from the Hub PIX

Note: Be aware that sometimes when IPsec negotiation is successful, not all of the debugs get shown on the PIX due to Cisco bug ID CSCdu84168 (registered customers only) which is a duplicate of internal Cisco bug ID CSCdt31745 (registered customers only) . This is not yet resolved as of the writing of this document.

Note: Sometimes the IPSec VPN from VPN Clients may not terminate on the PIX. In order to resolve this issue, ensure that client PC does not have any firewalls. If firewalls are present, check if UDP port 500 and 4500 are disabled. If this is the case, enable IPSec over TCP or unblock the UDP ports.

Debugs of a Dynamic IPsec Tunnel Between the Hub and Remote PIXes

```
crypto_isakmp_process_block:src:209.165.202.129,
dest:209.165.200.225 spt:500 dpt:500
OAK_MM exchange
ISAKMP (0): processing SA payload. message ID = 0

ISAKMP (0): Checking ISAKMP transform 1 against priority 10 policy
ISAKMP:      encryption DES-CBC
ISAKMP:      hash MD5
ISAKMP:      default group 2
ISAKMP:      auth pre-share
ISAKMP:      life type in seconds
ISAKMP:      life duration (VPI) of 0x0 0x1 0x51 0x80
ISAKMP (0): atts are acceptable. Next payload is 0
ISAKMP (0): SA is doing pre-shared key authentication using id type ID_IPV4_ADDR
return status is IKMP_NO_ERROR
crypto_isakmp_process_block:src:209.165.202.129, dest:209.165.200.225
spt:500 dpt:500
OAK_MM exchange
ISAKMP (0): processing KE payload. message ID = 0

ISAKMP (0): processing NONCE payload. message ID = 0

ISAKMP (0): processing vendor id payload

ISAKMP (0): received xauth v6 vendor id
```

```
ISAKMP (0): processing vendor id payload

ISAKMP (0): remote peer supports dead peer detection

ISAKMP (0): processing vendor id payload

ISAKMP (0): processing vendor id payload

ISAKMP (0): speaking to another IOS box!

return status is IKMP_NO_ERROR
crypto_isakmp_process_block:src:209.165.202.129, dest:209.165.200.225
spt:500 dpt:500
OAK_MM exchange
ISAKMP (0): processing ID payload. message ID = 0
ISAKMP (0): processing HASH payload. message ID = 0
ISAKMP (0): SA has been authenticated

ISAKMP: Created a peer struct for 209.165.202.129, peer port 62465
ISAKMP (0): ID payload
      next-payload : 8
      type          : 1
      protocol      : 17
      port          : 500
      length        : 8
ISAKMP (0): Total payload length: 12
return status is IKMP_NO_ERROR
ISAKMP (0): sending INITIAL_CONTACT notify
ISAKMP (0): sending NOTIFY message 24578 protocol 1
VPN Peer: ISAKMP: Added new peer: ip:209.165.202.129/500 Total VPN Peers:1
VPN Peer: ISAKMP: Peer ip:209.165.202.129/500 Ref cnt incremented to:1
Total VPN Peers:1
crypto_isakmp_process_block:src:209.165.202.129, dest:209.165.200.225
spt:500 dpt:500
ISAKMP (0): processing NOTIFY payload 24578 protocol 1
      spi 0, message ID = 863921625
ISAKMP (0): processing notify INITIAL_CONTACTIPSEC(key_engine):
got a queue event...
IPSEC(key_engine_delete_sas): rec'd delete notify from ISAKMP
IPSEC(key_engine_delete_sas): delete all SAs shared with 209.165.202.129

return status is IKMP_NO_ERR_NO_TRANS
crypto_isakmp_process_block:src:209.165.202.129, dest:209.165.200.225
spt:500 dpt:500
OAK_QM exchange
oakley_process_quick_mode:
OAK_QM_IDLE
ISAKMP (0): processing SA payload. message ID = 2542705093

ISAKMP : Checking IPsec proposal 1

ISAKMP: transform 1, ESP_DES
ISAKMP:   attributes in transform:
ISAKMP:     encaps is 1
ISAKMP:     SA life type in seconds
ISAKMP:     SA life duration (basic) of 28800
ISAKMP:     SA life type in kilobytes
ISAKMP:     SA life duration (VPI) of  0x0 0x46 0x50 0x0
ISAKMP:     authenticator is HMAC-MD5
ISAKMP (0): atts are acceptable.IPSEC(validate_proposal_request): proposal part #1,
(key eng. msg.) dest= 209.165.200.225, src= 209.165.202.129,
  dest_proxy= 10.48.66.0/255.255.255.0/0/0 (type=4),
  src_proxy= 10.48.67.0/255.255.255.0/0/0 (type=4),
  protocol= ESP, transform= esp-des esp-md5-hmac ,
  lifedur= 0s and 0kb,
```



```

spi= 0x0(0), conn_id= 0, keysize= 0, flags= 0x4

ISAKMP (0): processing NONCE payload. message ID = 2542705093

ISAKMP (0): processing ID payload. message ID = 2542705093
ISAKMP (0): ID_IPV4_ADDR_SUBNET src 10.48.67.0/255.255.255.0 prot 0 port 0
ISAKMP (0): processing ID payload. message ID = 2542705093
ISAKMP (0): ID_IPV4_ADDR_SUBNET dst 10.48.66.0/255.255.255.0 prot 0 port 0
IPSEC(key_engine): got a queue event...
IPSEC(spi_response): getting spi 0x858c841a(2240578586) for SA
                    from 209.165.202.129 to 209.165.200.225 for prot 3

return status is IKMP_NO_ERROR
crypto_isakmp_process_block:src:209.165.202.129, dest:209.165.200.225
spt:500 dpt:500
OAK_QM exchange
oakley_process_quick_mode:
OAK_QM_AUTH_AWAIT
ISAKMP (0): Creating IPsec SAs
    inbound SA from 209.165.202.129 to 209.165.200.225
        (proxy 10.48.67.0 to 10.48.66.0)
        has spi 2240578586 and conn_id 3 and flags 4
        lifetime of 28800 seconds
        lifetime of 4608000 kilobytes
    outbound SA from 209.165.200.225 to 209.165.202.129
        (proxy 10.48.66.0 to 10.48.67.0)
        has spi 681010504 and conn_id 4 and flags 4
        lifetime of 28800 seconds
        lifetime of 4608000 kilobytes
IPSEC(key_engine): got a queue event...
IPSEC(initialize_sas): ,
    (key eng. msg.) dest= 209.165.200.225, src= 209.165.202.129,
    dest_proxy= 10.48.66.0/255.255.255.0/0/0 (type=4),
    src_proxy= 10.48.67.0/255.255.255.0/0/0 (type=4),
    protocol= ESP, transform= esp-des esp-md5-hmac ,
    lifedur= 28800s and 4608000kb,
    spi= 0x858c841a(2240578586), conn_id= 3, keysize= 0, flags= 0x4
IPSEC(initialize_sas): ,
    (key eng. msg.) src= 209.165.200.225, dest= 209.165.202.129,
    src_proxy= 10.48.66.0/255.255.255.0/0/0 (type=4),
    dest_proxy= 10.48.67.0/255.255.255.0/0/0 (type=4),
    protocol= ESP, transform= esp-des esp-md5-hmac ,
    lifedur= 28800s and 4608000kb,
    spi= 0x28976548(681010504), conn_id= 4, keysize= 0, flags= 0x4

VPN Peer: IPSEC: Peer ip:209.165.202.129/500
Ref cnt incremented to:2 Total VPN Peers:1
VPN Peer: IPSEC: Peer ip:209.165.202.129/500
Ref cnt incremented to:3 Total VPN Peers:1
return status is IKMP_NO_ERROR

```

Debugs When You Connect the VPN Client to the Hub PIX

```

crypto_isakmp_process_block:src:10.48.68.2,
dest:209.165.200.225 spt:500 dpt:500OAK_AG exchange
ISAKMP (0): processing SA payload. message ID = 0
ISAKMP (0): Checking ISAKMP transform 1 against priority 10 policy
ISAKMP:     encryption AES-CBC
ISAKMP:     hash SHA
ISAKMP:     default group 2
ISAKMP:     extended auth pre-share (init)
ISAKMP:     life type in seconds
ISAKMP:     life duration (VPI) of 0x0 0x20 0xc4 0x9b
ISAKMP:     keylength of 256
ISAKMP (0): atts are not acceptable. Next payload is 3
ISAKMP (0): Checking ISAKMP transform 2 against priority 10 policy
ISAKMP:     encryption AES-CBC


```

```
ISAKMP:      hash MD5
ISAKMP:      default group 2
ISAKMP:      extended auth pre-share (init)
ISAKMP:      life type in seconds
ISAKMP:      life duration (VPI) of  0x0 0x20 0xc4 0x9b
ISAKMP:      keylength of 256
ISAKMP (0): atts are not acceptable. Next payload is 3
ISAKMP (0): Checking ISAKMP transform 3 against priority 10 policy
ISAKMP:      encryption AES-CBC
ISAKMP:      hash SHA
ISAKMP:      default group 2
ISAKMP:      auth pre-share
ISAKMP:      life type in seconds
ISAKMP:      life duration (VPI) of  0x0 0x20 0xc4 0x9b
ISAKMP:      keylength of 256
ISAKMP (0): atts are not acceptable. Next payload is 3
ISAKMP (0): Checking ISAKMP transform 4 against priority 10 policy
ISAKMP:      encryption AES-CBC
ISAKMP:      hash MD5
ISAKMP:      default group 2
ISAKMP:      auth pre-share
ISAKMP:      life type in seconds
ISAKMP:      life duration (VPI) of  0x0 0x20 0xc4 0x9b
ISAKMP:      keylength of 256
ISAKMP (0): atts are not acceptable. Next payload is 3
ISAKMP (0): Checking ISAKMP transform 5 against priority 10 policy
ISAKMP:      encryption AES-CBC
ISAKMP:      hash SHA
ISAKMP:      default group 2
ISAKMP:      extended auth pre-share (init)
ISAKMP:      life type in seconds
ISAKMP:      life duration (VPI) of  0x0 0x20 0xc4 0x9b
ISAKMP:      keylength of 128
ISAKMP (0): atts are not acceptable. Next payload is 3
ISAKMP (0): Checking ISAKMP transform 6 against priority 10 policy
ISAKMP:      encryption AES-CBC
ISAKMP:      hash MD5
ISAKMP:      default group 2
ISAKMP:      extended auth pre-share (init)
ISAKMP:      life type in seconds
ISAKMP:      life duration (VPI) of  0x0 0x20 0xc4 0x9b
ISAKMP:      keylength of 128
ISAKMP (0): atts are not acceptable. Next payload is 3
ISAKMP (0): Checking ISAKMP transform 7 against priority 10 policy
ISAKMP:      encryption AES-CBC
ISAKMP:      hash SHA
ISAKMP:      default group 2
ISAKMP:      auth pre-share
ISAKMP:      life type in seconds
ISAKMP:      life duration (VPI) of  0x0 0x20 0xc4 0x9b
ISAKMP:      keylength of 128
ISAKMP (0): atts are not acceptable. Next payload is 3
ISAKMP (0): Checking ISAKMP transform 8 against priority 10 policy
ISAKMP:      encryption AES-CBC
ISAKMP:      hash MD5
ISAKMP:      default group 2
ISAKMP:      auth pre-share
ISAKMP:      life type in seconds
ISAKMP:      life duration (VPI) of  0x0 0x20 0xc4 0x9b
ISAKMP:      keylength of 128
ISAKMP (0): atts are not acceptable. Next payload is 3
ISAKMP (0): Checking ISAKMP transform 9 against priority 10 policy
ISAKMP:      encryption 3DES-CBC
ISAKMP:      hash SHA
ISAKMP:      default group 2
ISAKMP:      extended auth pre-share (init)
```

```
ISAKMP:      life type in seconds
ISAKMP:      life duration (VPI) of  0x0 0x20 0xc4 0x9b
ISAKMP (0):  atts are not acceptable.
crypto_isakmp_process_block:src:10.48.68.2, dest:209.165.200.225 spt:500 dpt:500
crypto_isakmp_process_block:src:10.48.68.2, dest:209.165.200.225 spt:500 dpt:500
ISAKMP_TRANSACTION exchange
ISAKMP (0:0): processing transaction payload from 10.48.68.2.message ID = 17138612
ISAKMP: Config payload CFG_REPLY return status is IKMP_ERR_NO_RETRANS
ISAKMP (0:0): initiating peer config to 10.48.68.2. ID = 134858975 (0x809c8df)
crypto_isakmp_process_block:src:10.48.68.2, dest:209.165.200.225 spt:500 dpt:500
ISAKMP_TRANSACTION exchange
ISAKMP (0:0): processing transaction payload from 10.48.68.2. message ID = 17138612
ISAKMP: Config payload CFG_ACK
return status is IKMP_NO_ERROR
crypto_isakmp_process_block:src:10.48.68.2, dest:209.165.200.225 spt:500 dpt:500
ISAKMP_TRANSACTION exchange
ISAKMP (0:0): processing transaction payload from 10.48.68.2. message ID = 17138612
ISAKMP: Config payload CFG_REQUEST
ISAKMP (0:0): checking request:
ISAKMP: attribute      IP4_ADDRESS (1)
ISAKMP: attribute      IP4_NETMASK (2)
ISAKMP: attribute      IP4_DNS (3)
ISAKMP: attribute      IP4_NBNS (4)
ISAKMP: attribute      ADDRESS_EXPIRY (5)
      Unsupported Attr: 5
ISAKMP: attribute      UNKNOWN (28672)
      Unsupported Attr: 28672
ISAKMP: attribute      UNKNOWN (28673)
      Unsupported Attr: 28673
ISAKMP: attribute      ALT_DEF_DOMAIN (28674)
ISAKMP: attribute      ALT_SPLIT_INCLUDE (28676)
ISAKMP: attribute      ALT_SPLITDNS_NAME (28675)
ISAKMP: attribute      ALT_PFS (28679)
ISAKMP: attribute      ALT_BACKUP_SERVERS (28681)
ISAKMP: attribute      APPLICATION_VERSION (7)
ISAKMP: attribute      UNKNOWN (28680)
      Unsupported Attr: 28680
ISAKMP: attribute      UNKNOWN (28682)
      Unsupported Attr: 28682
ISAKMP: attribute      UNKNOWN (28677)
      Unsupported Attr: 28677
ISAKMP (0:0): responding to peer config from 10.48.68.2. ID = 1128513895
return status is IKMP_NO_ERROR
crypto_isakmp_process_block:src:10.48.68.2, dest:209.165.200.225 spt:500 dpt:500
OAK_QM exchange
oakley_process_quick_mode:
OAK_QM_IDLE
ISAKMP (0): processing SA payload. message ID = 3681346539
ISAKMP : Checking IPsec proposal 1
ISAKMP: transform 1, ESP_AES
ISAKMP:  attributes in transform:
ISAKMP:      authenticator is HMAC-MD5
ISAKMP:      key length is 256
ISAKMP:      encaps is 1
ISAKMP:      SA life type in seconds
ISAKMP:      SA life duration (VPI) of  0x0 0x20 0xc4 0x9b
IPSEC(validate_proposal): transform proposal (prot 3, trans 12, hmac_alg 1) not supported
ISAKMP (0): atts not acceptable. Next payload is 0
ISAKMP (0): skipping next ANDeD proposal (1)
ISAKMP : Checking IPsec proposal 2
ISAKMP: transform 1, ESP_AES
ISAKMP:  attributes in transform:
ISAKMP:      authenticator is HMAC-SHA
ISAKMP:      key length is 256
ISAKMP:      encaps is 1
ISAKMP:      SA life type in seconds
```

```
ISAKMP: SA life duration (VPI) of 0x0 0x20 0xc4 0x9b
IPSEC(validate_proposal): transform proposal (prot 3, trans 12, hmac_alg 2) not supported
ISAKMP (0): atts not acceptable. Next payload is 0
ISAKMP (0): skipping next ANDeD proposal (2)
crypto_isakmp_process_block:src:10.48.68.2, dest:209.165.200.225 spt:500 dpt:500
hub(config)#
hub(config)#
hub(config)#
hub(config)#
crypto_isakmp_process_block:src:10.48.68.2, dest:209.165.200.225 spt:500 dpt:500
ISAKMP (0): processing NOTIFY payload 36136 protocol 1
spi 0, message ID = 3784834735
ISAKMP (0): received DPD_R_U_THERE from peer 10.48.68.2
ISAKMP (0): sending NOTIFY message 36137 protocol 1
return status is IKMP_NO_ERR_NO_TRANS
```

Related Information

- [IPsec Negotiation/IKE Protocols Support Page](#)
- [Documentation for Cisco Secure ACS for Windows](#)
- [Cisco Secure ACS for Windows Support Page](#)
- [Documentation for PIX Firewall](#)
- [PIX Command Reference](#)
- [PIX Support Page](#)
- [TACACS+ in IOS Documentation](#)
- [TACACS+ Support Page](#)
- [Requests for Comments \(RFCs\)](#) 
- [Technical Support & Documentation – Cisco Systems](#)

[Contacts & Feedback](#) | [Help](#) | [Site Map](#)

© 2014 – 2015 Cisco Systems, Inc. All rights reserved. [Terms & Conditions](#) | [Privacy Statement](#) | [Cookie Policy](#) | [Trademarks of Cisco Systems, Inc.](#)

Updated: Sep 26, 2008

Document ID: 14087
