

Install NFVIS Using a USB Drive on Capable Platforms

Contents

[Introduction](#)

[Prerequisites](#)

[Requirements](#)

[Components Used](#)

[Configure](#)

Introduction

This document describes how to install Network Function Virtualization Infrastructure Software (NFVIS) using a USB drive on supported hardware.

Prerequisites

These platforms only support NFV installation using USB drive:

- ENCS5104
- Catalyst 8200 uCPE
- Catalyst 8300 uCPE
- UCS M6

Requirements

There are no specific requirements for this document.

Components Used

The information contained in this document is based on these software and hardware versions:

- Platform C8200-UCPE-1N8
- Cisco_NFVIS-4.16.1-FC2.iso
- 32 GB USB Memory
- 1 USB drive, preferably, v2.0 16/32GB

The information in this document was created from the devices in a specific lab environment. All of the devices used in this document started with a cleared (default) configuration. If your network is live, ensure that you understand the potential impact of any command.

Configure

1. Format the **USB** in FAT32 (File Allocation Table 32).
2. Connect the **flash drive** to your computer, open **File Explorer** (shortcut: Windows + E).

3. Right-click the **drive** you want to format and select **Format**. A new window is opened within the File System field, select FAT32.

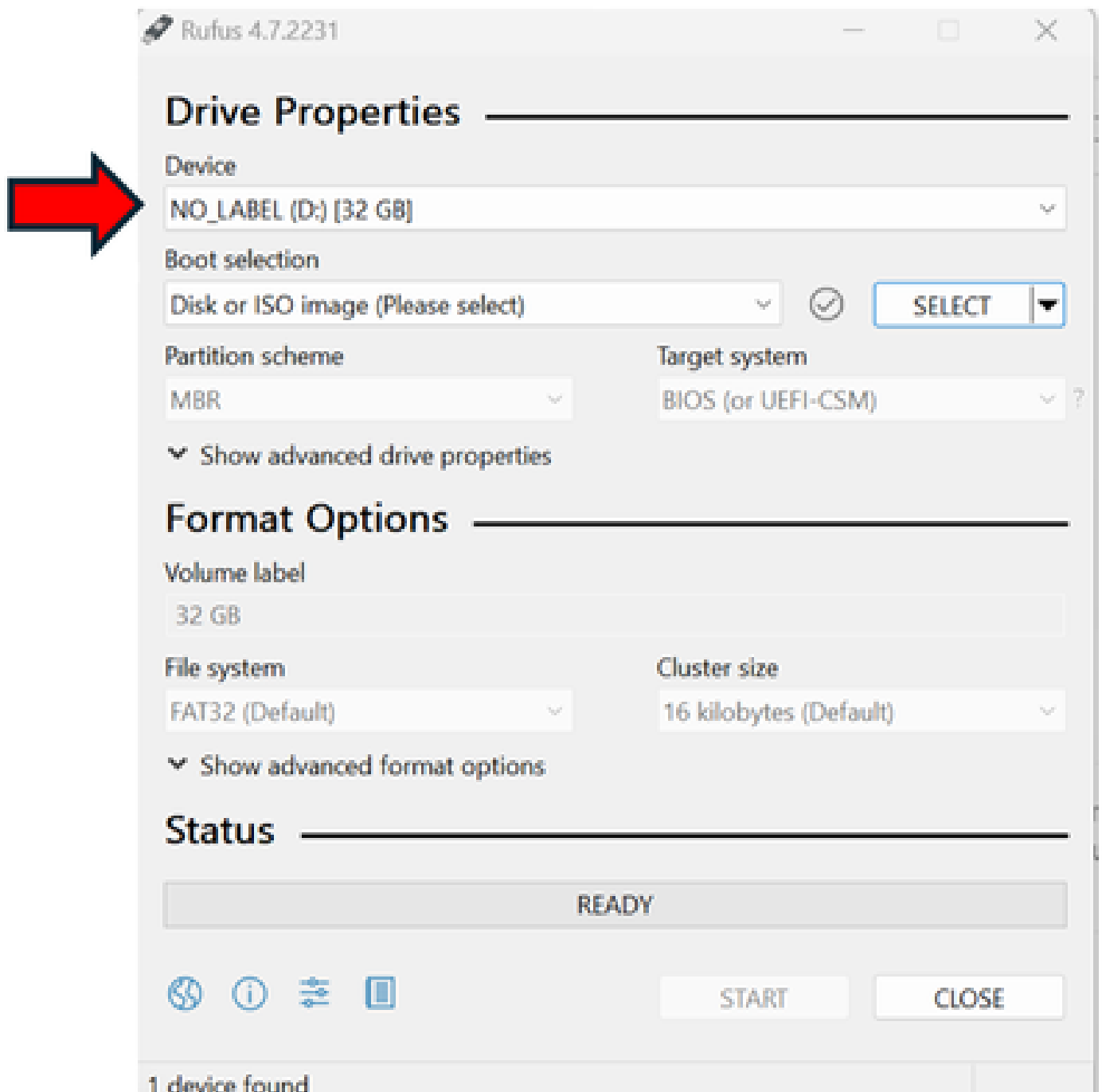
4. Click **start** and confirm the operation. Once complete, the flash drive is formatted in FAT32.

Download rufus to convert your memory into a bootable usb memory: [Rufus](#)

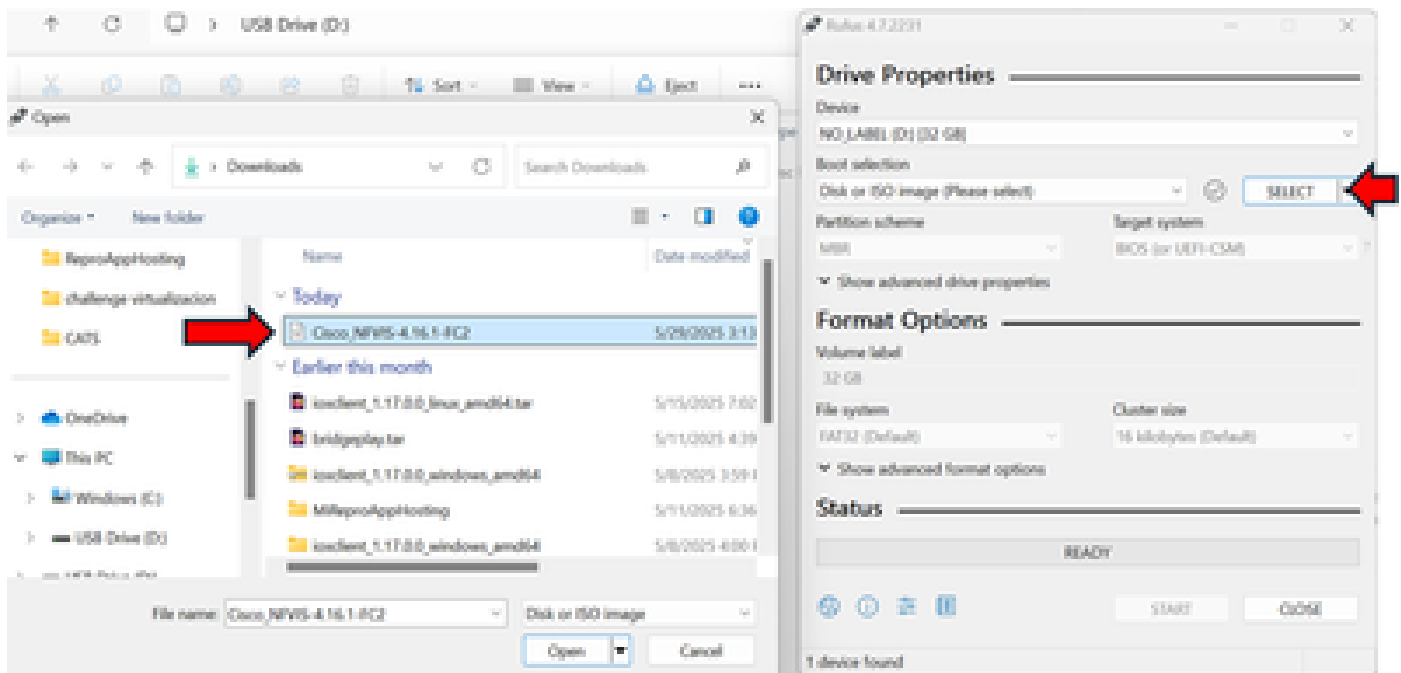
Rufus is a tool for formatting USB drives and converting them into bootable media. Its main function is to take an image file, such as an .ISO file, and write it correctly to a USB drive so that it can be used as operating system installation or recovery media.

5. Download the respective **Cisco NFVIS image**.

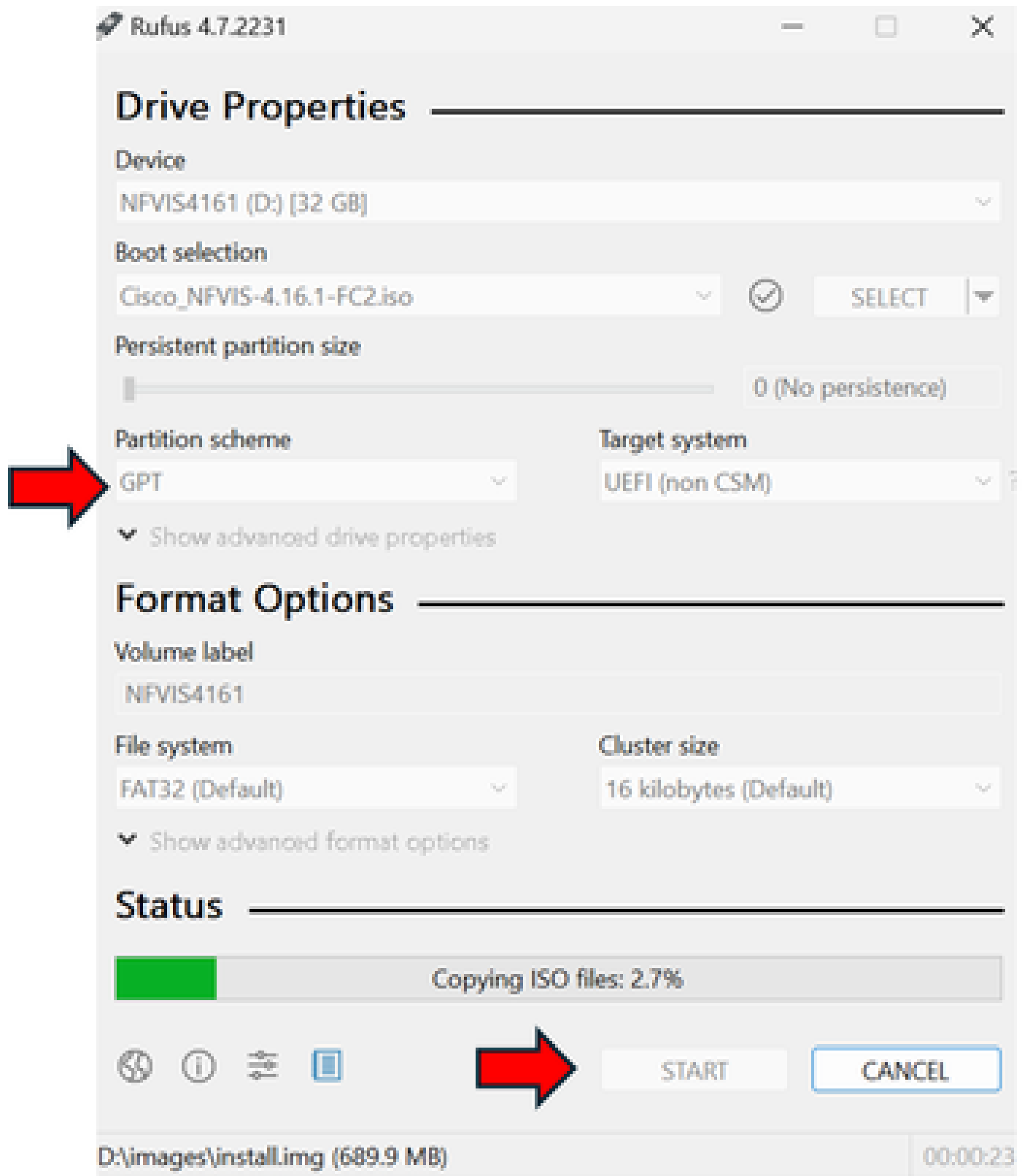
6. Open **Rufus** software, and select the **inserted USB**.



Then, click the **SELECT** option, this opens your local storage. Select the **image** you are interested to install:



Select the **partition scheme** as GPT (UID Partition Table) and click **start**. Immediately after that, Rufus starts writing the image onto the USB. You can see a green progress bar at the bottom indicating completion status. It is likely that before the process start you see several windows asking for yes/no questions. You answer **yes** to all of them.



Here you find an example of how to find the USB port in each platform.

C8200 uCPE:



ENC5104:



C8300 uCPE:



Once the memory is connected, you proceed to power cycle the device. Console connection is a must. It is very important to enter into the **boot selection** menu and select the **USB drive** as boot device. For this to happen, **F6** key must be pressed once this prompt is observed:

Press or <F2> to enter setup, <F6> Boot Menu, <F12> Network Boot

In case you configured a bios password as follows:

```
nfvis# hostaction change-bios-password newpassword <bios-password>
```

Please introduce it, otherwise, the system does not ask you for a password.



Choose the option that relates to the USB brand name.

```

*****L
*           Please select boot device:           *
*****ij
* AlmaLinux                                     *
* UEFI: VerbatimSTORE N GO 8.07, Partition 1    *
* Enter Setup                                   *
*****ij
*           and to move selection                *
*           ENTER to select boot device         *
*           ESC to boot using defaults         *
*****

```

Wait a couple of minutes for the GRUB installer must pop-up, the **Install Cisco NFV Infrastructure Software** option can be selected and executed automatically after a couple of seconds.

```

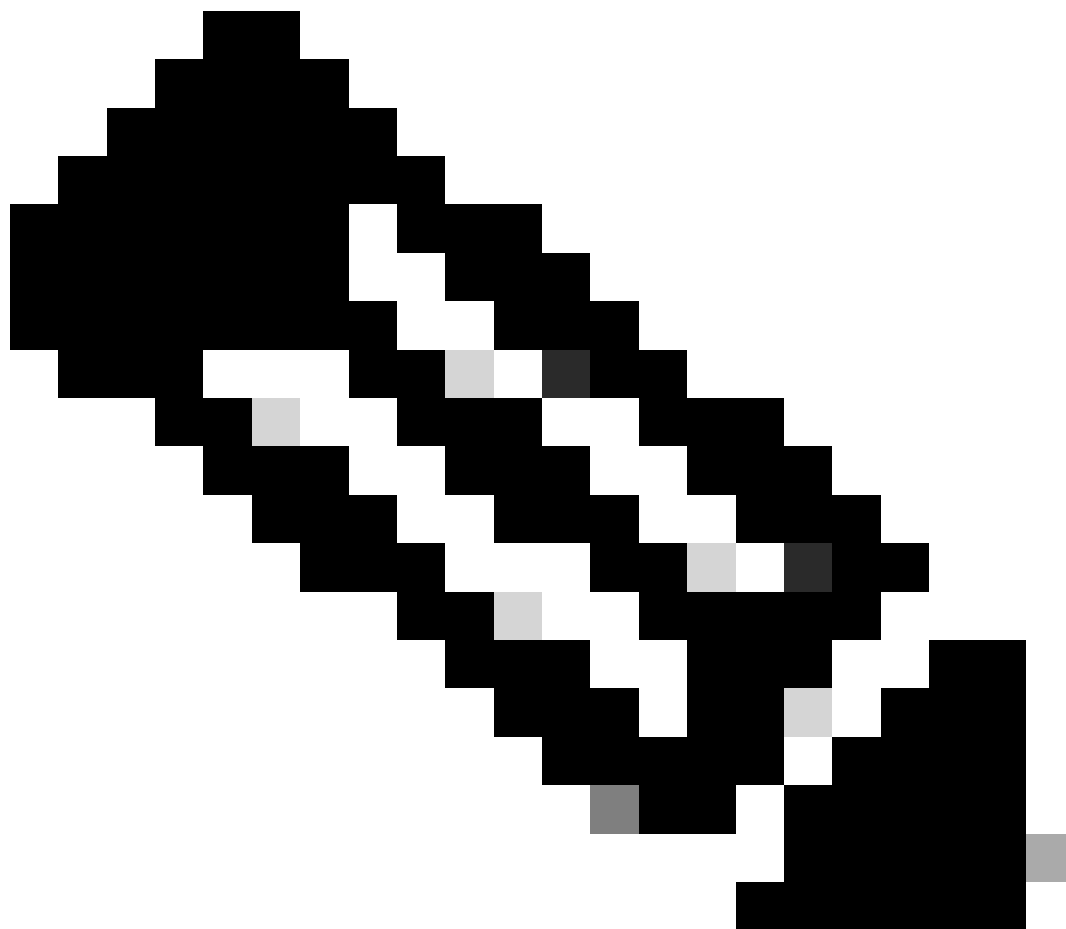
GRUB version 2.06

*****L
* Install Cisco NFV Infrastructure Software (4.16.1-FC2) *
* Troubleshooting -->                                   *
* * * * * * * * * * * * * * * * * * * * * * * * * * * *
* * * * * * * * * * * * * * * * * * * * * * * * * * * *
* * * * * * * * * * * * * * * * * * * * * * * * * * * *
* * * * * * * * * * * * * * * * * * * * * * * * * * * *
* * * * * * * * * * * * * * * * * * * * * * * * * * * *
* * * * * * * * * * * * * * * * * * * * * * * * * * * *
* * * * * * * * * * * * * * * * * * * * * * * * * * * *
* * * * * * * * * * * * * * * * * * * * * * * * * * * *
* * * * * * * * * * * * * * * * * * * * * * * * * * * *
* * * * * * * * * * * * * * * * * * * * * * * * * * * *
* * * * * * * * * * * * * * * * * * * * * * * * * * * *
*****

Use the  and  keys to select which entry is highlighted.
Press enter to boot the selected OS, 'e' to edit the commands
before booting or 'c' for a command-line.

```

After that, the installation process starts, no more actions are needed.



Note: The installation process could take around 15-30 minutes. Once it is finished, you see the prompt of the host coming up, and you start the session with the default credentials.

```
nfvis login: console (automatin)
Cisco Network Function Virtualization Infrastructure Software (NFVIS)
NFVIS Version: 4.16.1-FC2
```

```
Copyright (c) 2015-2025 by Cisco Systems, Inc.
Cisco, Cisco Systems, and Cisco Systems logo are registered trademarks of Cisco
Systems, Inc. and/or its affiliates in the U.S. and certain other countries.
```

```
<snip>
```

```
Login: admin
Warning: Permanently added 'localhost' (ED25519) to the list of known hosts.
admin@localhost's password:
```

At this point, there are 2 options available: set your personalized password (recommended) or work with the default password (Admin123). For this example, you set a **new password**:

Setting admin password will disable zero touch deployment behaviors.

Do you wish to proceed? [y or n]y

Please provide a password which satisfies the following criteria:

1. At least one lowercase character
2. At least one uppercase character
3. At least one number
4. At least one special character from # _ - * ?
5. Length should be between 7 and 128 characters

Please reset the password :

Please reenter the password :

Resetting admin password

New admin password is set

string argument without an encoding

And this is it, you have installed your host correctly.

nfvis# show version

Cisco NFV Infrastructure Software

Version 4.16.1-FC2

Build date Thursday, December 12, 2024 [19:48:58 UTC]

Last Reboot Tuesday, June 03 [21:10]