

# Multiple Java Plug-in Installation to Access CTC

Document ID: 64021

## Contents

### Introduction

#### Prerequisites

- Requirements
- Components Used
- Conventions

#### Background Information

- Multiple Java Plug-in Releases
- Browser Information
- Mozilla Installation

#### Java Plug-in Installation

##### JRE Compatibility with ONS 15454 and 15327

##### J2SE JRE Setting

- J2SE JRE Version 1.2.2
- J2SE JRE Version 1.3.1
- J2SE JRE Version 1.4.2

#### Verification

#### Related Information

## Introduction

This document describes the procedure to install multiple Java Plug-in releases in order to access Cisco Transport Controller (CTC).

## Prerequisites

### Requirements

Cisco recommends that you have knowledge of these topics:

- Cisco Transport Controller
- Cisco ONS 15454/15327

### Components Used

The information in this document is based on these software and hardware versions:

- Cisco Transport Controller
- Cisco ONS 15454/15327
- Internet Explorer, Netscape and Mozilla (in order to use three different Java Runtime Environment (JRE) versions on the same PC)

The information in this document was created from the devices in a specific lab environment. All of the devices used in this document started with a cleared (default) configuration. If your network is live, make sure that you understand the potential impact of any command.

## Conventions

Refer to Cisco Technical Tips Conventions for more information on document conventions.

## Background Information

This section provides the required background information to help you understand the contents of this document better.

### Multiple Java Plug-in Releases

When you install multiple Java Plug-in releases, you can eliminate the need to remove and reinstall a different release of Java Plug-in in order to access the multiple Cisco ONS15454/15327 operational software releases successfully. After the implementation, you simply launch the relevant browser based on the operating software release of the node you want to access.

### Browser Information


The browser on which you launch CTC depends on the Java 2 Runtime Environment, Standard Edition (J2SE) JRE version that the ONS 15454 or 15327 supports. Table 1 lists the relevant browser for each version.

**Version Supported by ONS 15454 or 15327 Browser to be Used to Launch CTC**

J2SE JRE Release 1.2.2
Microsoft Internet Explorer
J2SE JRE release 1.3.2
Netscape
J2SE JRE release 1.4.2
Mozilla

### Mozilla Installation

You must install Mozilla, even if you have already installed Internet Explorer and Netscape. When you install all the three browsers, you can use three different JRE versions on the same PC.

In order to install Mozilla, the first step is to download Mozilla release 1.7.1 from [www.mozilla.org](http://www.mozilla.org) . The file name is **mozilla-win32-1.7.1-installer**. Complete these steps:

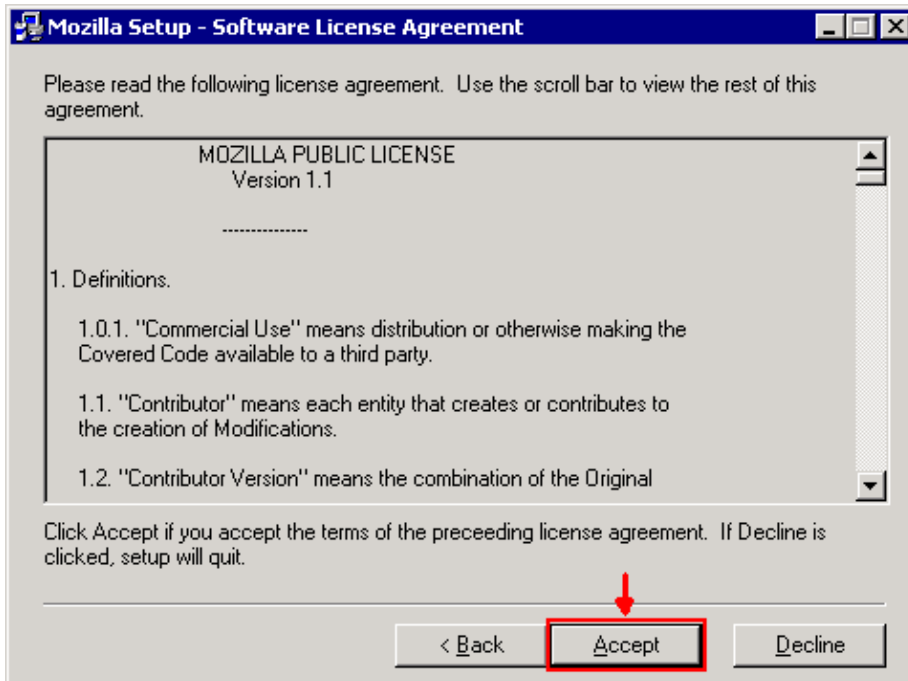
1. Run **mozilla-win32-1.7.1-installer**. The Mozilla Setup – Welcome window appears (see Figure 1).

**Figure 1 Mozilla Setup: Welcome Window**



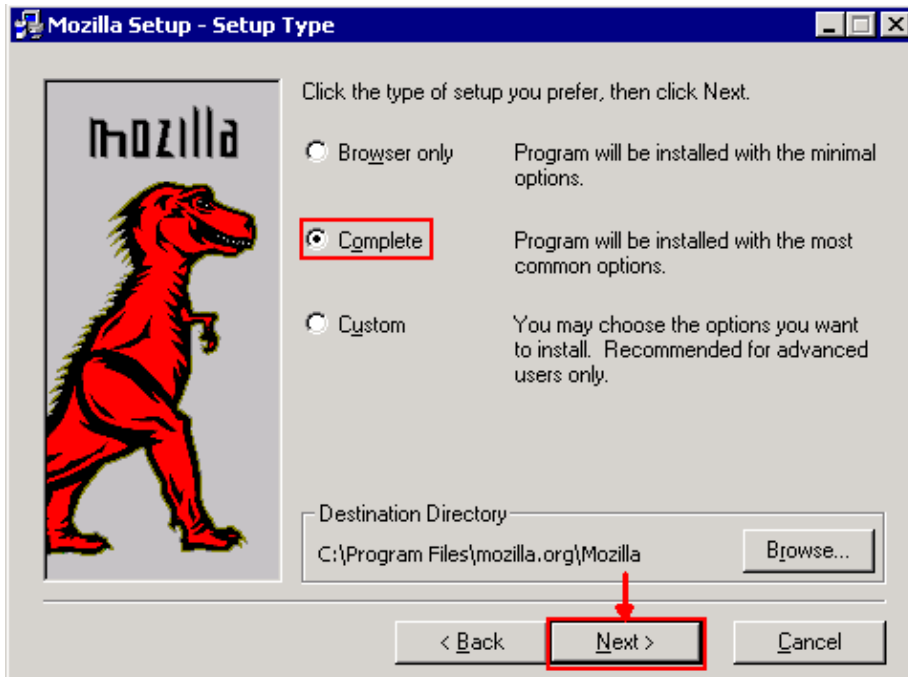
2. Click **Next**. The Software License Agreement window appears (see Figure 2).

**Figure 2 Software License Agreement Window**



3. Read the license, and click **Accept**. The Setup Type window appears (see Figure 3).

**Figure 3 Setup Type Window**



4. Select the **Complete** radio button. Click **Next**. The Quick Launch window appears (see Figure 4).

**Figure 4 Quick Launch Window**



5. Click **Next**. The Start Install window appears (see Figure 5).

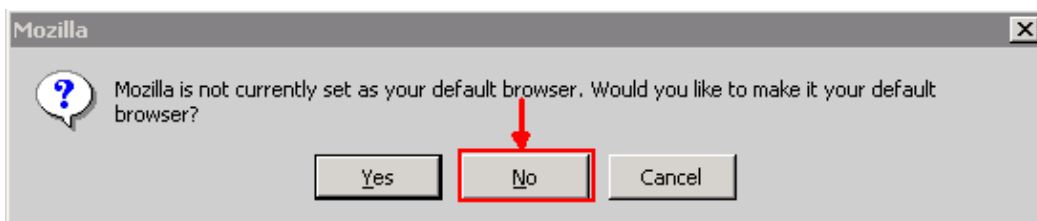
**Figure 5 Start Install Window**



6. Click **Install** in order to start the installation.

After the installation is complete, a prompt to set Mozilla as the default browser appears (see Figure 6).

**Figure 6 Mozilla Installation Completion Message**



7. Click **No**.

## Java Plug-in Installation

Download these releases for Java 2 Runtime Environment, Standard Edition (J2SE) from the web site of Sun Microsystems [☞](#).

1. The J2SE JRE release 1.2.2 (use **jre-1\_2\_2\_017-windows-i586.exe** or later version).
2. The J2SE JRE release 1.3.1 (use **j2re-1\_3\_1\_14-windows-i586.exe** or later version).
3. The J2SE JRE release 1.4.2 (use **j2re-1\_4\_2\_06-windows-i586-p.exe** or later version).

**Note:** If you already have Java installed, Cisco recommends that you uninstall all JRE versions, and install them again in the right sequence (see JRE Installation Sequence), after you install Mozilla.

**Note:** Complete these steps in order to uninstall any existing versions of JRE:

1. Choose **Start > Settings > Control Panel > Add/Remove Programs**.
2. Select the JRE version you want to uninstall, and click **Remove**.
3. Open Windows Explorer.
4. From the Program Files folder, delete all **Java** and **Javasoft** folders.

## JRE Installation Sequence

Here is the installation sequence:

1. Install the J2SE JRE release 1.4.2.
2. Install the J2SE JRE release 1.3.1. Choose **Netscape** as the default browser when the prompt appears. Use the default folder to install the JRE. Do **not** change the folder.
3. Install the J2SE JRE release 1.2.2. Use the default folder to install the JRE. Do **not** change the folder.

After the installation, create a new Java policy file. You can download the JRE 1.3.1\_02, Java Policy Install and Launcher policy from the Cisco Software Download page (registered customers only) .

Overwrite the original Java policy file with the new Java policy file for the three J2SE JRE releases. Here is the path to the Java policy file for different releases:

```
C:\Program Files\<JavaSoft or Java>\JRE\<JRE release>\lib\security\java.policy
```

## JRE Compatibility with ONS 15454 and 15327

Table 2 provides information on the compatibility among ONS 15454/15327 software release, JRE and the browser.

	ONS Software Releases	Internet Explorer (JRE 1.2.2.x)	Netscape (JRE 1.3.1.x)	Mozilla (JRE 1.4.2.x)																																																											
2.2.0	Yes	No	No	2.2.1	Yes	No	No	2.2.2	Yes	No	No	2.3.4	Yes	No	No	3.2.1	Yes	No	No	3.3.0	Yes	No	No	3.4.0	No	Yes	No	3.4.1	No	Yes	No	4.0.1	No	Yes	No	4.0,2	No	Yes	No	4.1.0	No	Yes	No	4.1.3	No	Yes	No	4.1.4	No	Yes	No	4.6.2	No	Yes	No	4.7	No	No	Yes	5.0	No	No	Yes

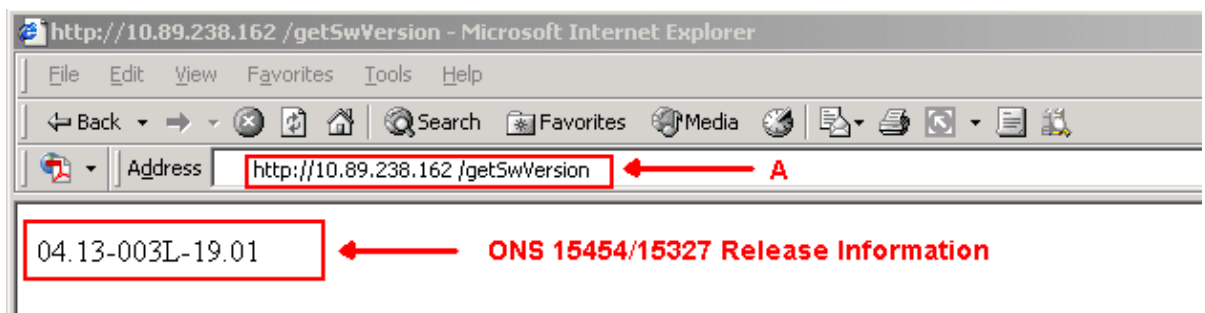
**Note:** If you use ONS 15454/15327 3.2.1 or 3.3.0 release software, if CTC fails to launch, click **Delete CTC Cache**. Then launch CTC again.

Complete these steps in order to determine the current software release on ONS 15454/15327:

1. Open a browser window.
2. In the Address bar, type the IP address of the node followed by **/getSwVersion** as shown by the A arrow in Figure 7.

Network connectivity to the node must exist for successful command execution.

**Figure 7 Determine the ONS 15454/15327 Software Release**



# J2SE JRE Setting

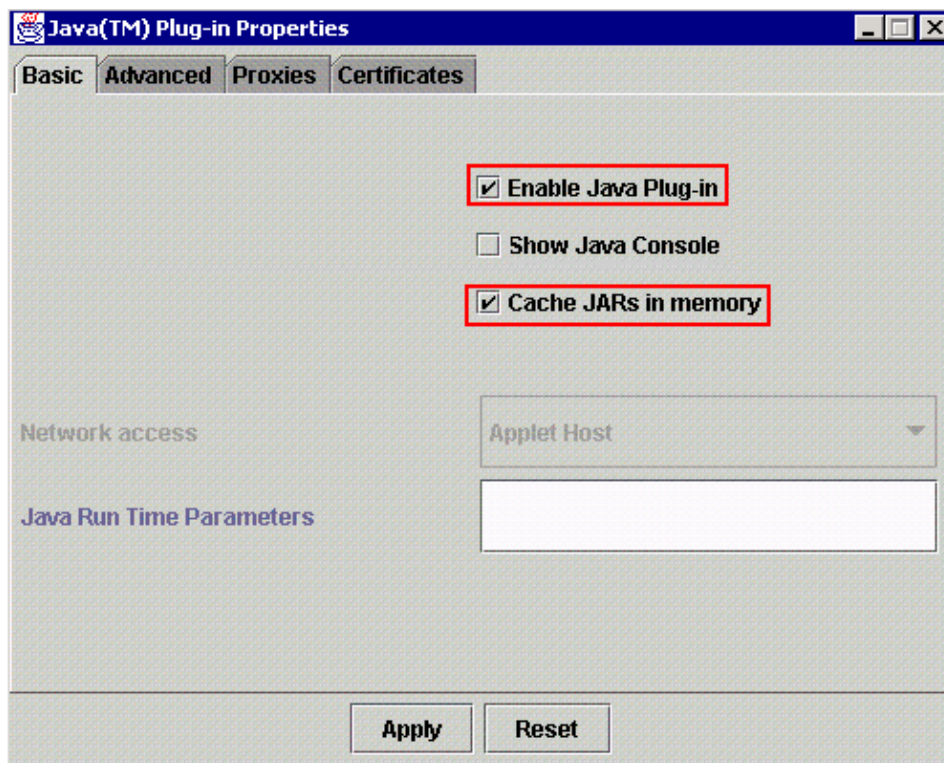
This section lists the steps you must complete in order to specify appropriate settings for the J2SE JRE release version that you use.

## J2SE JRE Version 1.2.2

Complete these steps in order to specify the settings for J2SE JRE release 1.2.2:

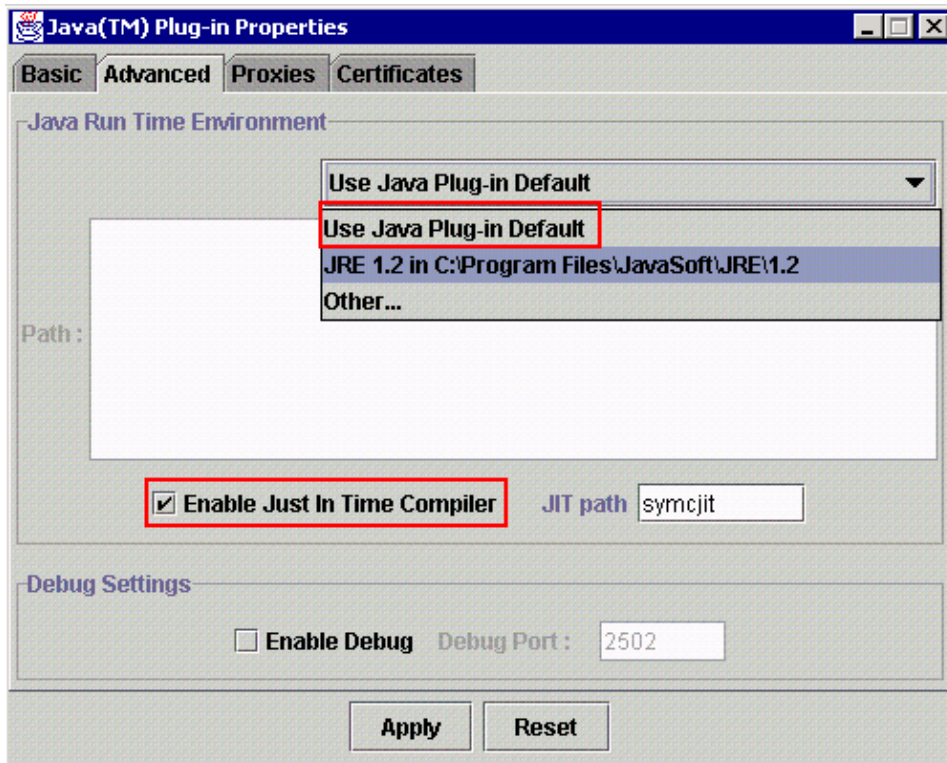
1. Choose **Start > All Programs > Java Plugin Control Panel**.
2. In the Java (TM) Plug-in Properties screen, check the **Enable Java Plug-in** check box, and the **Cache JARS in memory** check box in the Basic tab (see Figure 8).

**Figure 8 J2SE JRE Release 1.2.2: Basic Settings**



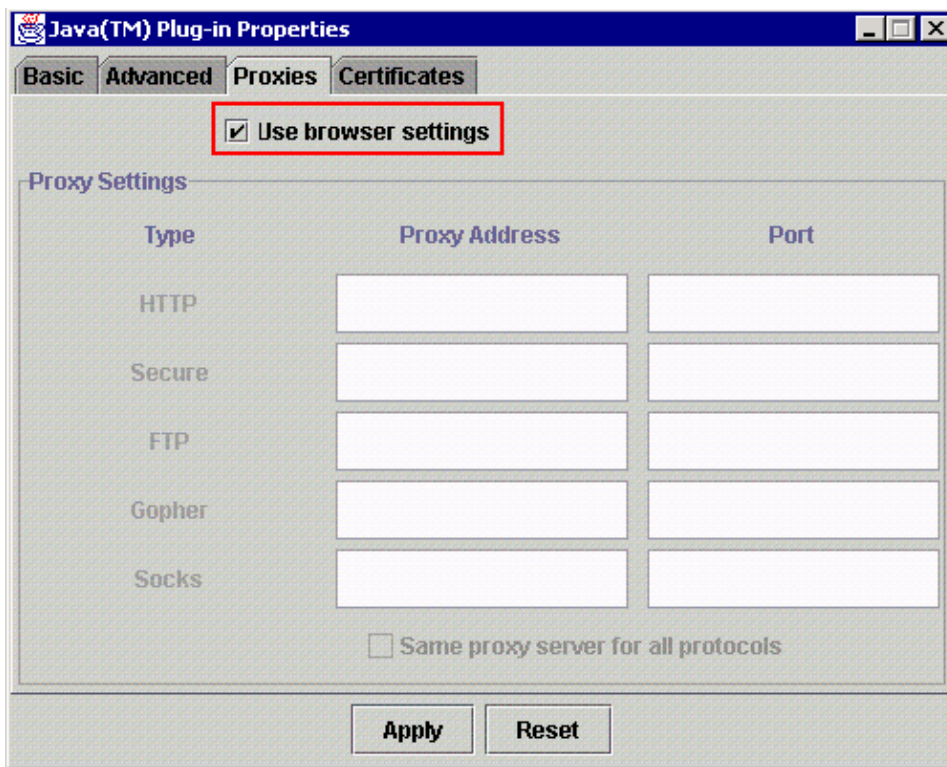
3. Go to the Advanced tab.
4. Select the **Use Java Plug-in Default** option, and check the **Enable Just In Time Compiler** check box (see Figure 9).

**Figure 9 J2SE JRE Release 1.2.2: Advanced Settings**



5. Go to the Proxies tab.
6. Check the **Use browser settings** check box (see Figure 10).

**Figure 10 J2SE JRE release 1.2.2: Proxy Settings**



7. Click **Apply**.

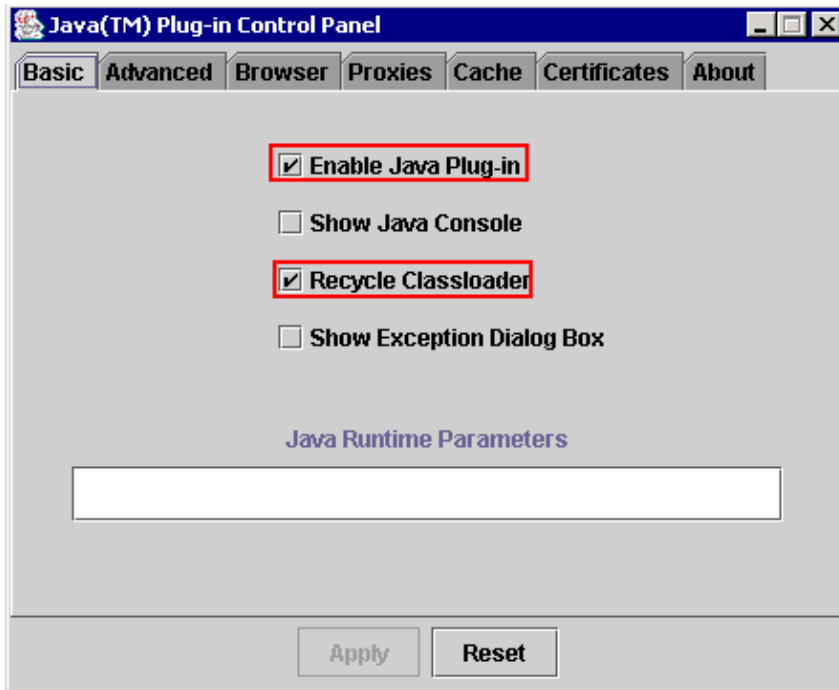
## J2SE JRE Version 1.3.1

Complete these steps in order to specify the settings for J2SE JRE release 1.3.1:



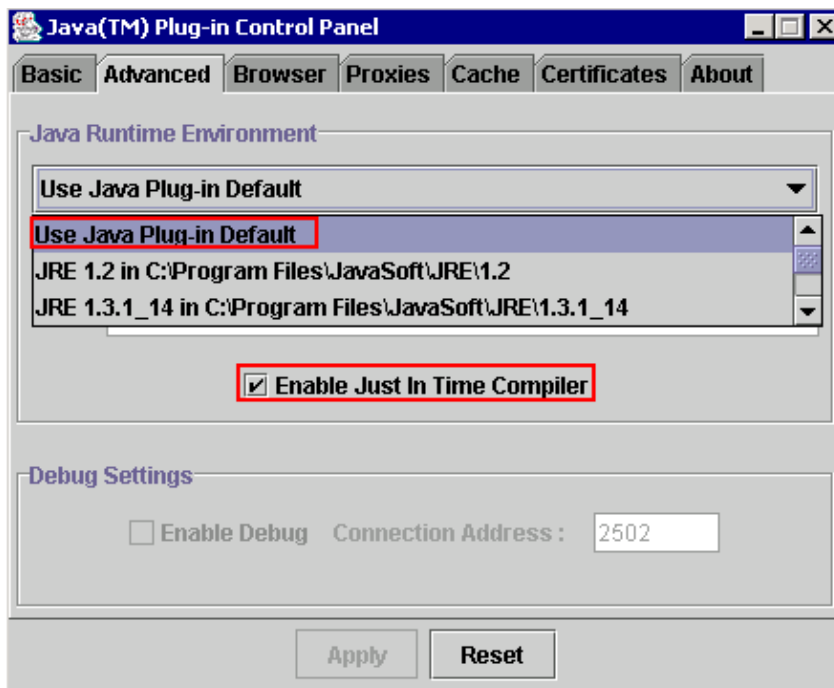
1. Choose **Start > Control Panel > Java Plugin 1.3.1\_X**.
2. In the Java(TM) Plug-in Control Panel window, check the **Enable Java Plug-in** check box, and the **Recycle Classloader** check box in the Basic tab (see Figure 11).

**Figure 11 J2SE JRE release 1.3.1: Basic Settings**



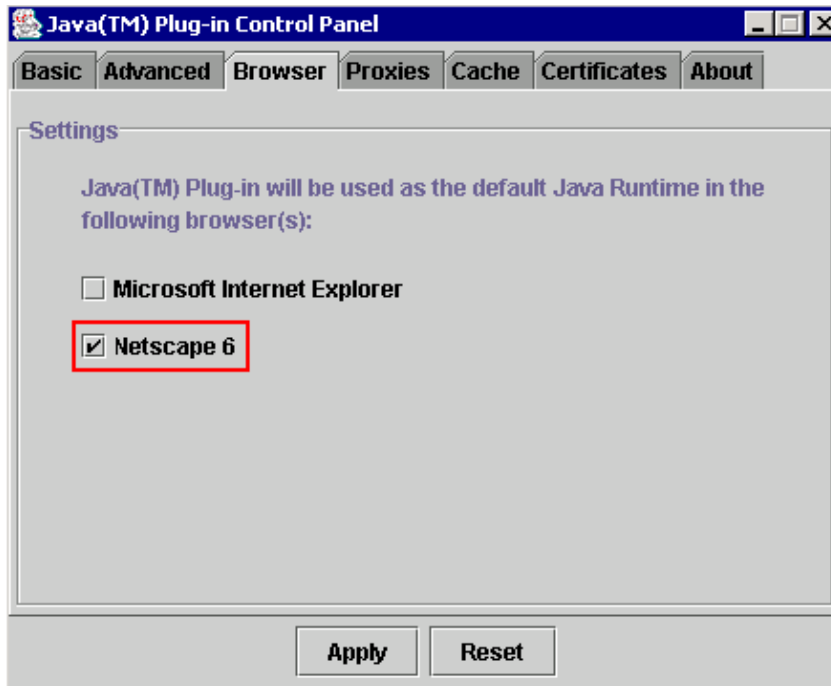
3. Go to the Advanced tab.
4. Select the **Use Java Plug-in Default** option, and check the **Enable Just in Time Compiler** check box (see Figure 12).

**Figure 12 J2SE JRE release 1.3.1: Advanced Settings**



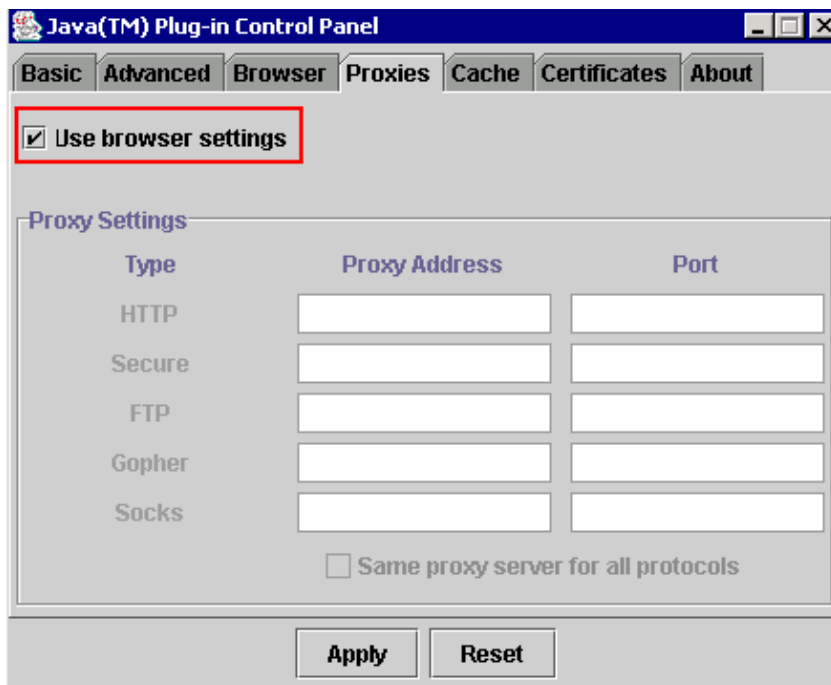
5. Go to the Browser tab.
6. Check the **Netscape 6** check box (see Figure 13).

Figure 13 J2SE JRE release 1.3.1: Browser Setting



7. Go to the Proxies tab.
8. Check the **Use browser settings** check box (see Figure 14).

Figure 14 J2SE JRE release 1.3.1: Proxy Settings



9. Click **Apply**.

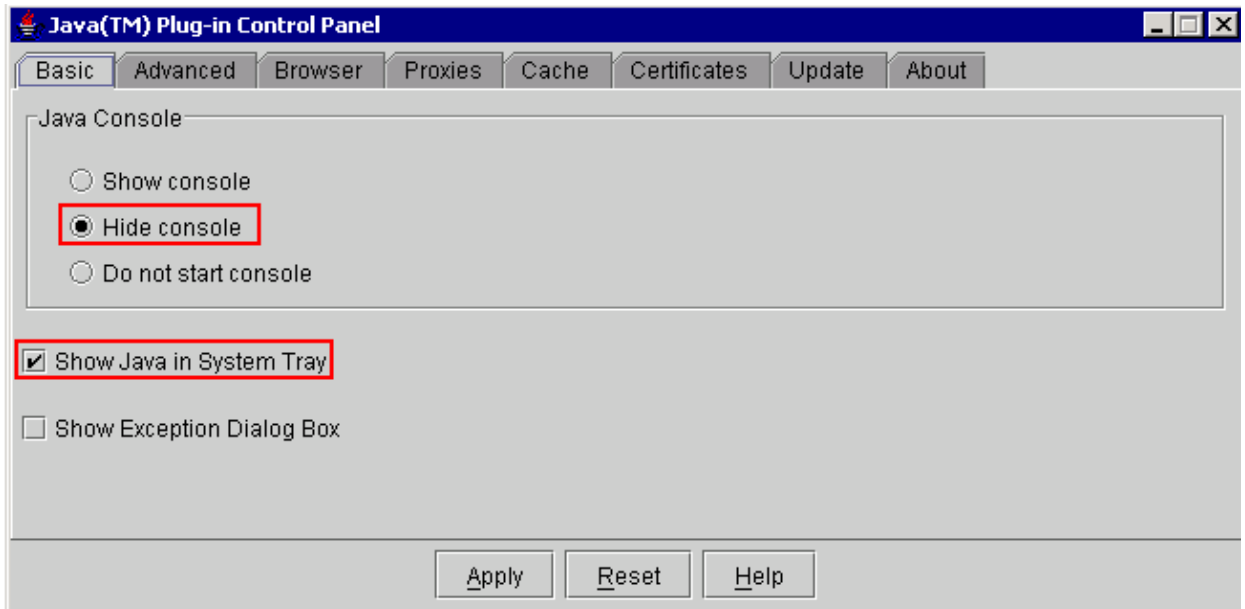
## J2SE JRE Version 1.4.2

Complete these steps in order to specify the settings for J2SE JRE release 1.4.2:

1. Choose **Start > Control Panel > Java Plugin**.

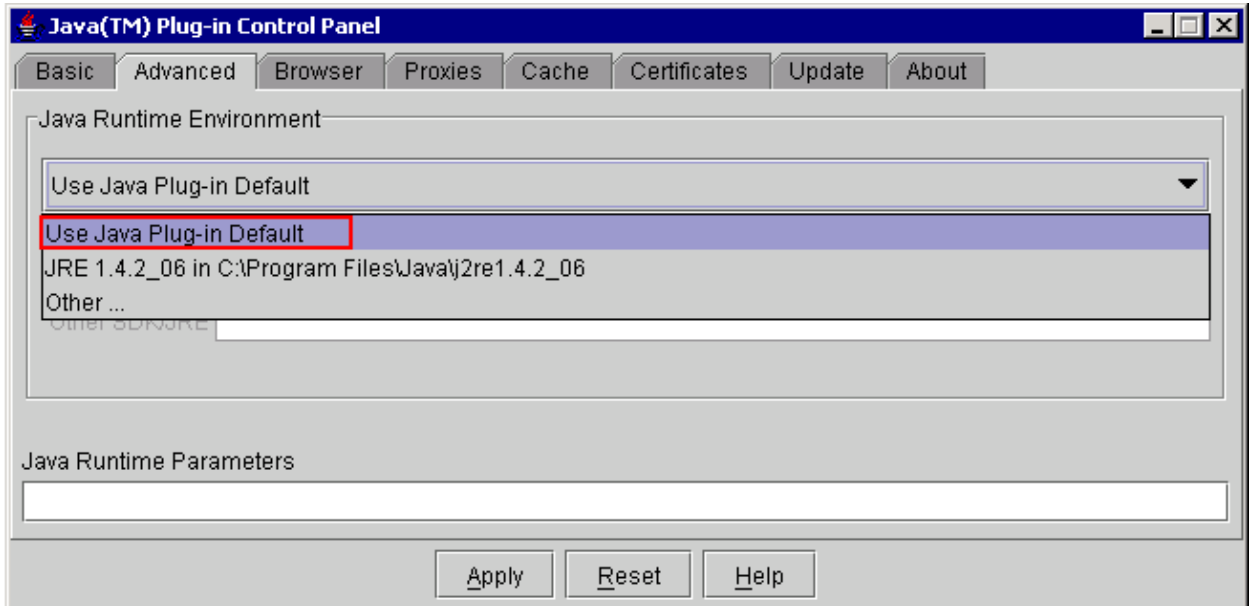
2. Select the **Hide console** option in the **Java Console** section, and check the **Show Java in System Tray** check box in the Basic tab (see Figure 15).

**Figure 15 J2SE JRE release 1.4.2: Basic Settings**



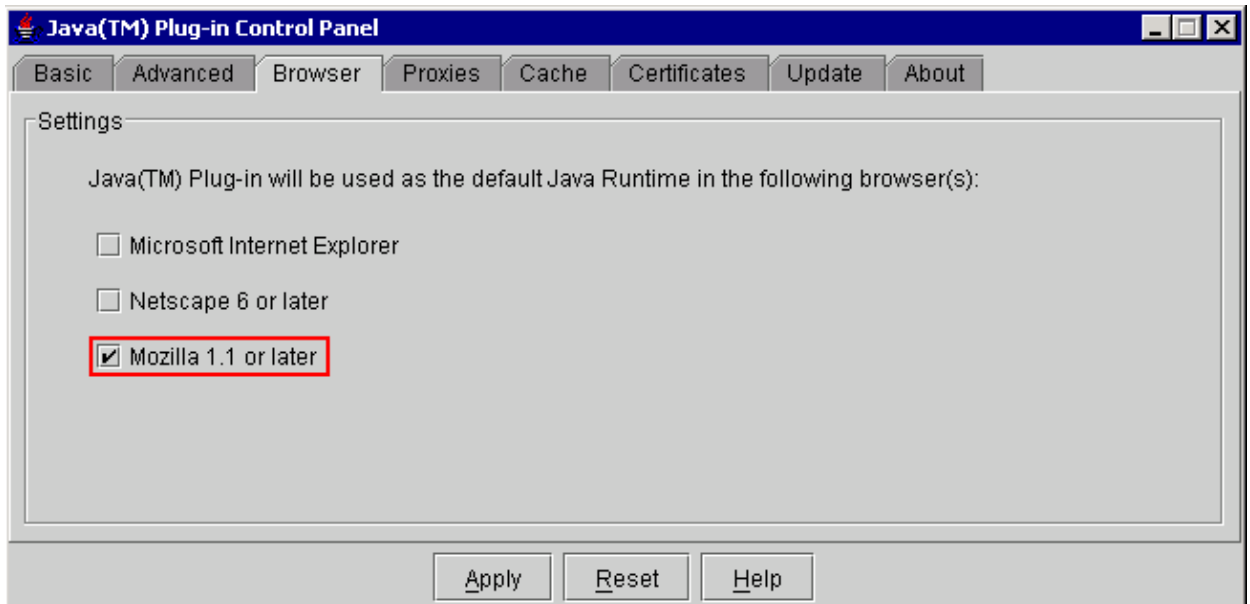
3. Go to the Advanced tab.
4. Select the **Use Java Plug-in Default** option (see Figure 16).

**Figure 16 J2SE JRE release 1.4.2: Advanced Settings**



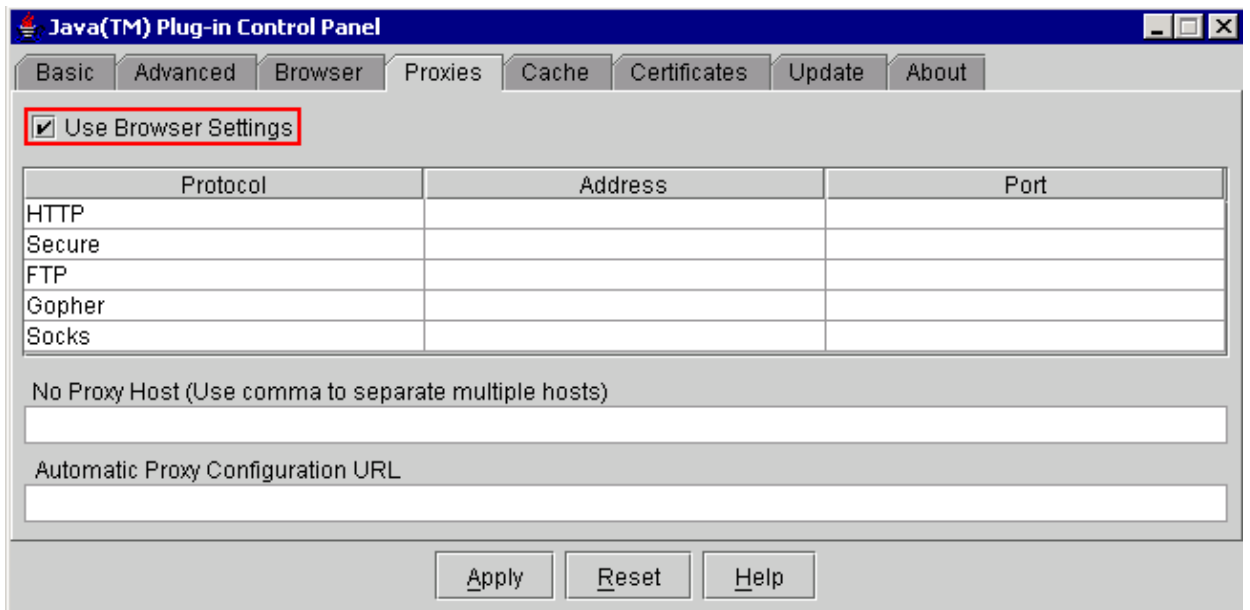
5. Go to the Browser tab.
6. Check only the **Mozilla 1.1 or later** check box (see Figure 17).

**Figure 17 J2SE JRE release 1.4.2: Browser Settings**



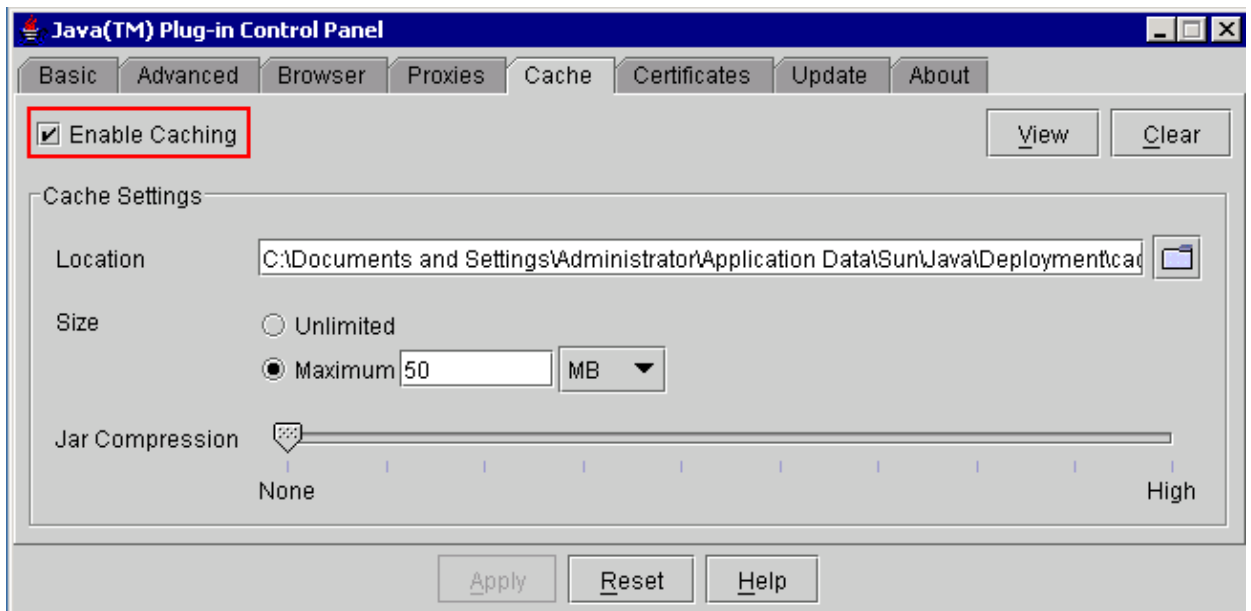
7. Go to the Proxies tab.
8. Check the **Use Browser Settings** check box (see Figure 18).

**Figure 18 J2SE JRE release 1.4.2: Proxy Settings**



9. Go to the Cache tab.
10. Check the **Enable Caching** check box (see Figure 19).

**Figure 19 J2SE JRE release 1.4.2: Enable Caching**



## Verification

Complete these steps in order to verify the installation:

1. Open the appropriate browser. For information on the browser to use, see Table 1.
2. Launch Metro Planner to verify whether the application executes successfully.

**Note:** If you use Metro Planner release 2.5, you need to locate and create a .bat file so that Metro Planner works.

**Note:** When you access ONS 15454/15327 that runs release 4.x.x, a window can appear to indicate that an older policy file exists. The window prompts you to overwrite the policy file. Check the **Don't show this message again** check box, and click **NO**. If you click **YES**, the original Java policy file is set as the default file, and you can no longer access release 2.x.x.

## Related Information

- [JRE Download, Installation and Compatible Matrix with CTC for ONS 15454 and 15327](#)
- [Technical Support & Documentation – Cisco Systems](#)

---

[Contacts & Feedback](#) | [Help](#) | [Site Map](#)

© 2013 – 2014 Cisco Systems, Inc. All rights reserved. [Terms & Conditions](#) | [Privacy Statement](#) | [Cookie Policy](#) | [Trademarks of Cisco Systems, Inc.](#)

---

Updated: Nov 02, 2006

Document ID: 64021

---