

Contents

[Introduction](#)

[Prerequisites](#)

[Requirements](#)

[Components Used](#)

[Background Information](#)

[ISIS Remote LFA](#)

[Configure](#)

[Network Diagram](#)

[Configurations](#)

[CPE-1-R8](#)

[CPE-2-R8](#)

[PE-1-R1](#)

[P1-R2](#)

[P2-R3](#)

[P3-R4](#)

[P4-R5](#)

[P5-R6](#)

[PE-2-R7](#)

[Verify](#)

[P1-R2](#)

[P2-R3](#)

[P3-R4](#)

[P4-R5](#)

[P5-R6](#)

[Failure in core scenario, traffic flow in core when LFA is configured.](#)

[P1-R2](#)

[Troubleshoot](#)

Introduction

This document describes how to configure Multiprotocol Label Switching (MPLS) Layer 3 Vpns with ISIS Remote Loop Free Alternative (LFA) feature. It shows a sample network scenario and its configuration and outputs to understand better.

Prerequisites

Requirements

There are no specific requirements for this document. However, basic understanding of MPLS and working knowledge of ISIS protocol will definitely help.

Components Used

This document is not restricted to specific software and hardware versions.

The information in this document was created from the devices in a specific lab environment. All of the devices used in this document started with a cleared (default) configuration. If your network is live, make sure that you understand the potential impact of any command.

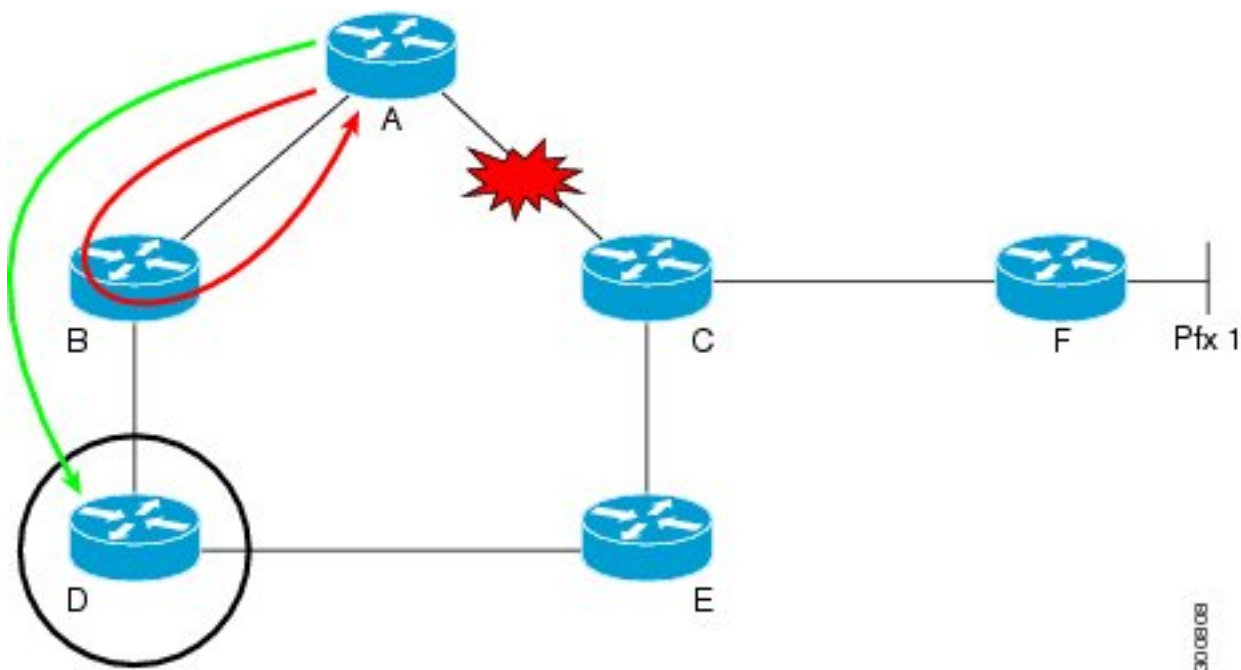
Background Information

ISIS is widely deployed across ISPs worldwide and MPLS Layer 3 Vpn is the most common solution provided by the ISPs. Inside an ISP core infrastructure link failure directly impacts the performance, so sub-second convergence is highly desired. Features like MPLS tunnel Link Protection and Node Protection solve these issues but require manual configuration.

ISIS Remote LFA leverages the concept that for a given area, all the ISIS routers will have identical link State Database. If Router A needs to select a backup path to destination X, via Router B, then Router A can select Router B as the backup next hop provided that Router B does not use Router A as its next hop for destination X. This can be done as all the routers have identical database. This is the basic idea for the LFA feature. Now this backup path is directly programmed in Cisco Express Forwarding (CEF) entry and will be instantly used once the primary route fails. Then the routing protocol can converge as per traditional timers.

ISIS Remote LFA

To understand better how Remote LFA works, consider this diagram:



The traffic flows from Router A to F taking the path A--C--F. If the link between Router A and C goes down. Router A then can immediately send the packets destined to F, to router B, but this will not solve the problem. Since the link just got down and ISIS topology is unaware of the change. If the packets arrive at Router B, Router B will still have old routing information and will still have the entry to route to F via A. Hence packets will be looped between B and A till the point topology converges.

To solve this problem, tunnel the packets to Router D from Router A. Router D never used path via Router A to go to F. Now when the link between Router A and C fails, immediately without any convergence the traffic destined to router F is sent to Router D via Tunnel. Now Router D is unaware of any such change in topology when it gets the tunneled traffic from Router A destined to Router F, it forwards the packets via its normal routing logic. So traffic flow remains unaffected and meanwhile the topology can reconverge.

Configure

Network Diagram

The topology for the MPLS Layer 3 Vpn with Remote LFA:

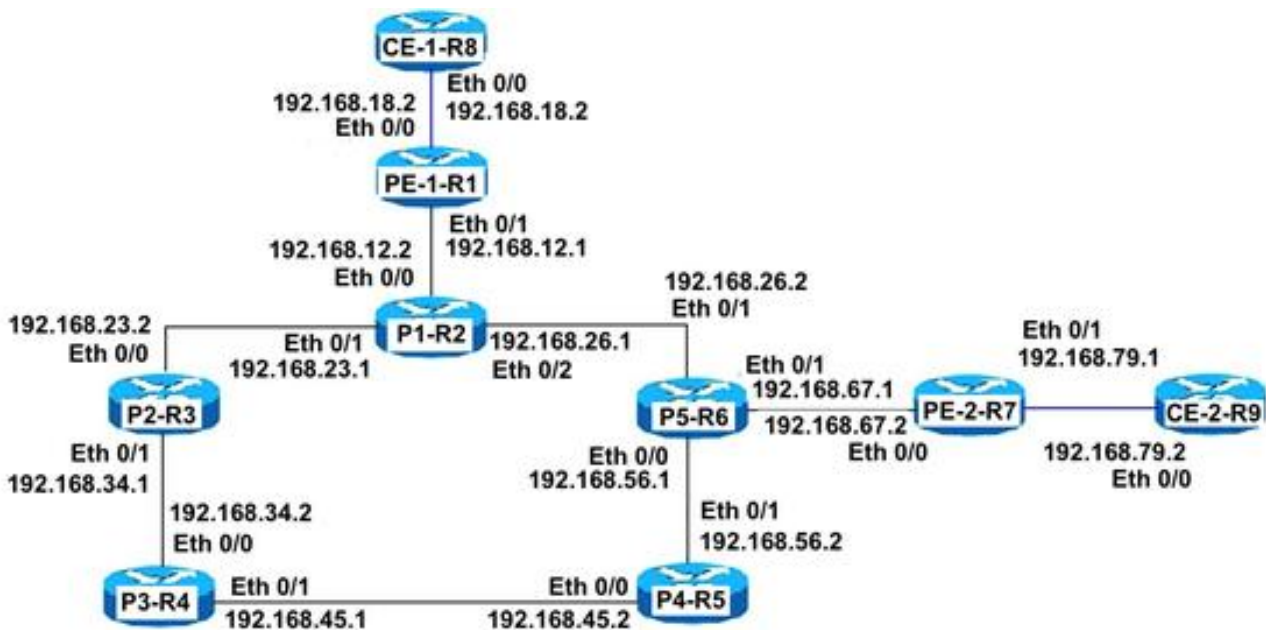
Acronym

CE = Customer Edge Router

PE = Provider Edger Router

P = Provider Router

Loopback used is 192.168.255.X, where X Router Number. For example, if R1 is under consideration, then loopback is 192.168.255.1.



Configurations

CPE-1-R8

#Basic CE configuration with the use of a default route:

```
interface Ethernet0/0
```

```
ip address 192.168.18.8 255.255.255.0
!  
!  
ip route 0.0.0.0 0.0.0.0 192.168.18.1  
!  
!
```

CPE-2-R8

#Basic CE configuration with the use of a default route.

```
interface Ethernet0/0  
ip address 192.168.79.9 255.255.255.0  
!  
!  
ip route 0.0.0.0 0.0.0.0 192.168.79.7  
!  
!
```

PE-1-R1

PE Configuration

```
interface Loopback1  
ip address 192.168.255.1 255.255.255.255  
ip router isis TAC  
!  
interface Ethernet0/0  
vrf forwarding A  
ip address 192.168.18.1 255.255.255.0  
!
```

ISIS Interface must be point-to-point

```
interface Ethernet0/1  
ip address 192.168.12.1 255.255.255.0  
ip router isis TAC  
mpls ip  
isis circuit-type level-2-only  
isis network point-to-point  
!  
!
```

Configuring ISIS remote LFA

```
router isis TAC  
net 49.0000.0000.0001.00  
is-type level-2-only  
metric-style wide  
fast-reroute per-prefix level-2 all  
fast-reroute remote-lfa level-2 mpls-ldp  
mpls ldp autoconfig level-2  
!
```

BGP Vpnv4 peering with PE-2-R7

```
router bgp 65000  
bgp log-neighbor-changes  
no bgp default ipv4-unicast  
neighbor 192.168.255.7 remote-as 65000  
neighbor 192.168.255.7 update-source Loopback1  
!
```

```
address-family ipv4
exit-address-family
!
address-family vpnv4
neighbor 192.168.255.7 activate
neighbor 192.168.255.7 send-community both
exit-address-family
!
address-family ipv4 vrf A
redistribute connected
exit-address-family
!
```

P1-R2

P Configuration

```
interface Loopback1
ip address 192.168.255.2 255.255.255.255
ip router isis TAC
!
```

ISIS Interface must be point-to-point

```
interface Ethernet0/0
ip address 192.168.12.2 255.255.255.0
ip router isis TAC
mpls ip
isis circuit-type level-2-only
isis network point-to-point
!
interface Ethernet0/1
ip address 192.168.23.2 255.255.255.0
ip router isis TAC
mpls ip
isis circuit-type level-2-only
isis network point-to-point
!
interface Ethernet0/2
ip address 192.168.26.2 255.255.255.0
ip router isis TAC
mpls ip
isis circuit-type level-2-only
isis network point-to-point
!
!
```

Configuring ISIS remote LFA

```
router isis TAC
net 49.0000.0000.0002.00
is-type level-2-only
metric-style wide
fast-reroute per-prefix level-2 all
fast-reroute remote-lfa level-2 mpls-ldp
!
```

P2-R3

P Configuration

```
interface Loopback1
ip address 192.168.255.3 255.255.255.255
ip router isis TAC
!
```

ISIS Interface must be point-to-point

```
interface Ethernet0/0
ip address 192.168.23.3 255.255.255.0
ip router isis TAC
mpls ip
isis circuit-type level-2-only
isis network point-to-point
!
interface Ethernet0/1
ip address 192.168.34.3 255.255.255.0
ip router isis TAC
mpls ip
isis circuit-type level-2-only
isis network point-to-point
!
!
```

Configuring ISIS remote LFA

```
router isis TAC
net 49.0000.0000.0003.00
is-type level-2-only
metric-style wide
fast-reroute per-prefix level-2 all
fast-reroute remote-lfa level-2 mpls-ldp
!
```

P3-R4

P Configuration

```
interface Loopback1
ip address 192.168.255.4 255.255.255.255
ip router isis TAC
!
```

ISIS Interface must be point-to-point

```
interface Ethernet0/0
ip address 192.168.34.4 255.255.255.0
ip router isis TAC
mpls ip
isis circuit-type level-2-only
isis network point-to-point
!
interface Ethernet0/1
ip address 192.168.45.4 255.255.255.0
ip router isis TAC
mpls ip
isis circuit-type level-2-only
isis network point-to-point
!
!
```

Configuring ISIS remote LFA

```
router isis TAC
```

```
net 49.0000.0000.0004.00
is-type level-2-only
metric-style wide
fast-reroute per-prefix level-2 all
fast-reroute remote-lfa level-2 mpls-ldp
```

P4-R5

P Configuration

```
interface Loopback1
ip address 192.168.255.5 255.255.255.255
ip router isis TAC
!
```

ISIS Interface must be point-to-point

```
interface Ethernet0/0
ip address 192.168.45.5 255.255.255.0
ip router isis TAC
mpls ip
isis circuit-type level-2-only
isis network point-to-point
!
```

```
interface Ethernet0/1
ip address 192.168.56.5 255.255.255.0
ip router isis TAC
mpls ip
isis circuit-type level-2-only
isis network point-to-point
!
```

Configuring ISIS remote LFA

```
router isis TAC
net 49.0000.0000.0005.00
is-type level-2-only
metric-style wide
fast-reroute per-prefix level-2 all
fast-reroute remote-lfa level-2 mpls-ldp
```

P5-R6

P Configuration

```
interface Loopback1
ip address 192.168.255.6 255.255.255.255
ip router isis TAC
!
```

ISIS Interface must be point-to-point

```
interface Ethernet0/0
ip address 192.168.56.6 255.255.255.0
ip router isis TAC
mpls ip
isis circuit-type level-2-only
isis network point-to-point
!
```

```
interface Ethernet0/1
ip address 192.168.26.6 255.255.255.0
ip router isis TAC
mpls ip
```

```
isis circuit-type level-2-only
isis network point-to-point
!
interface Ethernet0/2
ip address 192.168.67.6 255.255.255.0
ip router isis TAC
mpls ip
isis circuit-type level-2-only
isis network point-to-point
```

```
!
```

Configuring ISIS remote LFA

```
router isis TAC
net 49.0000.0000.0006.00
is-type level-2-only
metric-style wide
fast-reroute per-prefix level-2 all
fast-reroute remote-lfa level-2 mpls-ldp
!
```

PE-2-R7

PE Configuration

```
interface Loopback1
ip address 192.168.255.7 255.255.255.255
ip router isis TAC
!
```

ISIS Interface must be point-to-point

```
interface Ethernet0/0
ip address 192.168.67.7 255.255.255.0
ip router isis TAC
mpls ip
isis circuit-type level-2-only
isis network point-to-point
!
```

```
interface Ethernet0/1
vrf forwarding A
ip address 192.168.79.7 255.255.255.0
!
```

Configuring ISIS remote LFA

```
router isis TAC
net 49.0000.0000.0007.00
is-type level-2-only
metric-style wide
fast-reroute per-prefix level-2 all
fast-reroute remote-lfa level-2 mpls-ldp
!
```

BGP Vpnv4 peering with PE-1-R1

```
router bgp 65000
bgp log-neighbor-changes
no bgp default ipv4-unicast
neighbor 192.168.255.1 remote-as 65000
neighbor 192.168.255.1 update-source Loopback1
!
```



```
address-family ipv4
exit-address-family
!
address-family vpnv4
neighbor 192.168.255.1 activate
neighbor 192.168.255.1 send-community both
exit-address-family
!
address-family ipv4 vrf A
redistribute connected
exit-address-family
!
```

Verify

Use this section in order to confirm that your configuration works properly.

P1-R2

The command **show isis fast-reroute remote-lfa tunnels** displays the remote LFA tunnels built on the router:

```
P1-R2#show isis fast-reroute remote-lfa tunnels
Tag TAC - Fast-Reroute Remote-LFA Tunnels: MPLS-Remote-Lfa1: use Et0/2, nexthop 192.168.26.6,
end point 192.168.255.5
MPLS-Remote-Lfa2: use Et0/1, nexthop 192.168.23.3, end point 192.168.255.4
```

P2-R3

```
P2-R3#show isis fast-reroute remote-lfa tunnels
Tag TAC - Fast-Reroute Remote-LFA Tunnels: MPLS-Remote-Lfa1: use Et0/1, nexthop 192.168.34.4,
end point 192.168.255.5
MPLS-Remote-Lfa2: use Et0/0, nexthop 192.168.23.2, end point 192.168.255.6
```

P3-R4

```
P3-R4#show isis fast-reroute remote-lfa tunnels
Tag TAC - Fast-Reroute Remote-LFA Tunnels: MPLS-Remote-Lfa1: use Et0/1, nexthop 192.168.45.5,
end point 192.168.255.6
MPLS-Remote-Lfa2: use Et0/0, nexthop 192.168.34.3, end point 192.168.255.2
```

P4-R5

```
P4-R5#show isis fast-reroute remote-lfa tunnels
Tag TAC - Fast-Reroute Remote-LFA Tunnels: MPLS-Remote-Lfa1: use Et0/0, nexthop 192.168.45.4,
end point 192.168.255.3
MPLS-Remote-Lfa2: use Et0/1, nexthop 192.168.56.6, end point 192.168.255.2
```

P5-R6

```
P5-R6#show isis fast-reroute remote-lfa tunnels
Tag TAC - Fast-Reroute Remote-LFA Tunnels: MPLS-Remote-Lfa1: use Et0/0, nexthop 192.168.56.5,
end point 192.168.255.4
MPLS-Remote-Lfa2: use Et0/1, nexthop 192.168.26.2, end point 192.168.255.3
```

Failure in core scenario, traffic flow in core when LFA is configured.

Before inducing a link failure, If you check on P-1-R2 you would see already there is a targeted LDP session formed between P-1-R2 and P-5-R4 as a backup path due to RLFA. Without RLFA the routing protocol has to detect the failure and needs to reconverge.

```
P-1-R2#show ip route repair-paths 192.168.255.7
Routing entry for 192.168.255.7/32
  Known via "isis", distance 115, metric 30, type level-c
  Redistributing via isis TAC
  Last update from 192.168.26.6 on Ethernet0/2, 02:23:31 ago
  Routing Descriptor Blocks:
  * 192.168.26.6, from 192.168.255.7, 02:23:31 ago, via Ethernet0/2
    Route metric is 30, traffic share count is 1
    Repair Path: 192.168.255.4, via MPLS-Remote-Lfa6
  [RPR]192.168.255.4, from 192.168.255.7, 02:23:31 ago, via MPLS-Remote-Lfa6
    Route metric is 20, traffic share count is 1
P-1-R2#show mpls ldp neighbor 192.168.255.4
Peer LDP Ident: 192.168.255.4:0; Local LDP Ident 192.168.255.2:0
TCP connection: 192.168.255.4.32391 - 192.168.255.2.646
State: Oper; Msgs sent/rcvd: 184/183; Downstream
Up time: 02:26:09
LDP discovery sources:
  Targeted Hello 192.168.255.2 -> 192.168.255.4, active, passive
Addresses bound to peer LDP Ident:
  192.168.255.4  192.168.34.4  192.168.45.4
```

It can be observed here that repair path to PE2-R7 in routing table is via 192.168.255.4 (P3-R4). As a part of Remote LFA logic a tunnel is prebuilt to P3-R4. Hence, whenever the primary link fails, immediately packets are tunnelled to P3-R4 and this happens at line card level as the entry is pre-built. So there is no traffic disruption and forwarding is seamless. The ISIS protocol then can converge based upon it's configured timers.

P1-R2 router does not need to look for backup path, as already there is a CEF entry formed ie via P2-R3 prior to the failure.

```
P1-R2#show ip cef 192.168.255.7
nexthop 192.168.26.6 Ethernet0/2 label [25|26]
repair: attached-nexthop 192.168.255.4 MPLS-Remote-Lfa6
```

This diagram demonstrates the exact behaviour explained previously:

