

# Configuring ISL Trunking Between Catalyst Switches Running CatOS and Cisco IOS System Software

Document ID: 8759

## Contents

### Introduction

#### Prerequisites

- Requirements
- Components Used
- Background Theory
- Important Notes
- Conventions

#### Configure

- Network Diagram
- Configurations

#### Verify

- show Commands

#### Troubleshoot

- Switch Does Not Accept a Change of Native VLAN on a Trunk Port Because Port Is a Non-802.1Q Port

#### Related Information

## Introduction

This document provides sample configurations for Inter-Switch Link (ISL) trunking between a Cisco Catalyst 5000 switch that runs Catalyst OS (CatOS) and a Catalyst 6500 switch that runs Cisco IOS® system software. You can use any of these switches in this scenario in order to obtain the same results:

- Any Catalyst 4500/4000, 5500/5000, or 6500/6000 series switch that runs CatOS
- Any Catalyst 4500/4000 or Catalyst 6500/6000 series switch that runs Cisco IOS system software

## Prerequisites

### Requirements

There are no specific requirements for this document.

### Components Used

The information in this document is based on these software and hardware versions:

- Catalyst 5000 switch that runs CatOS 6.1(1) software
- Catalyst 6509 switch that runs Cisco IOS Software Release 12.1(4)E1

The information in this document was created from the devices in a specific lab environment. For details about the lab environment, see the Network Diagram section of this document. Ensure that you understand the potential impact of any configuration or command on your network before you use it. The configurations on all devices were cleared with the **clear config all** and **write erase** commands in order to ensure a default

configuration.

## Background Theory

Trunking is a way to carry traffic from several VLANs over a point-to-point link between two devices. Two ways in which you can implement Ethernet trunking are:

- ISL (a Cisco proprietary protocol)
- IEEE 802.1Q (an IEEE standard)

This document includes only the configuration files from the switches and the output from the related sample **show** commands. For details on how to configure an ISL trunk between Catalyst switches, refer to these documents:

- Configuring VLAN Trunks on Fast Ethernet and Gigabit Ethernet Ports (Catalyst 5000)
- *Understanding VLAN Trunks* section of Configuring Layer 2 Ethernet Interfaces (Catalyst 6500/6000 series switch that runs Cisco IOS Software)
- *Understanding VLAN Trunks* section of Configuring Layer 2 Ethernet Interfaces (Catalyst 4500/4000 series switch that runs Cisco IOS Software)

## Important Notes

- The Catalyst 4500/4000 series switches (which include the Catalyst 2948G and Catalyst 2980G) that run CatOS only support 802.1Q trunking. These switches do not support ISL trunking.
- The Catalyst 4000 switches with a Supervisor Engine II+ or later run Cisco IOS Software by default. These switches support both ISL and 802.1Q trunking modes on all interfaces except on blocking Gigabit ports on the WS-X4418-GB and S-X4412-2GB-T modules. In these cases, the switches support only 802.1Q trunking. Ports 3 through 18 are blocking Gigabit ports on the WS-X4418-GB module. Ports 1 through 12 are blocking Gigabit ports on the WS-X4412-2GB-T module. The term "blocking port" means that the port connection to the backplane is oversubscribed.
- Any Ethernet port on a Catalyst 6500/6000 series switch supports 802.1Q and ISL encapsulation.
- Based on the module, Catalyst 5000 trunk-capable ports support ISL encapsulation only or support both ISL and 802.1Q. The best way to determine the supported encapsulation types is to use the **show port capabilities** command. The command output explicitly states the trunking capacity, as this example shows:

```
cat5000> show port capabilities 3
Model                WS-X5225R
Port                 3/1
Type                 10/100BaseTX
Speed                auto,10,100
Duplex               half,full
Trunk encap type     802.1Q, ISL

!--- This particular port supports both 802.1Q and ISL.

Trunk mode           on,off,desirable,auto,nonegotiate
Channel              3/1-2,3/1-4
Broadcast suppression percentage(0-100)
Flow control         receive-(off,on),send-(off,on)
Security             yes
Membership           static,dynamic
Fast start           yes
QOS scheduling       rx-(none),tx-(none)
CoS rewrite          yes
ToS rewrite          IP-Precedence
Rewrite              no
UDLD                 yes
```

```
AuxiliaryVlan      1..1000,1025..4094,untagged,dot1p,none
SPAN               source,destination
```

- Be sure that the trunking modes match across the trunk link. If you configure one side of the link as an ISL trunk, you must configure the other side of the link as ISL. Similarly, if you configure one side of the link as an 802.1Q, you must configure the other side of the link as 802.1Q.

## Conventions

Refer to Cisco Technical Tips Conventions for more information on document conventions.

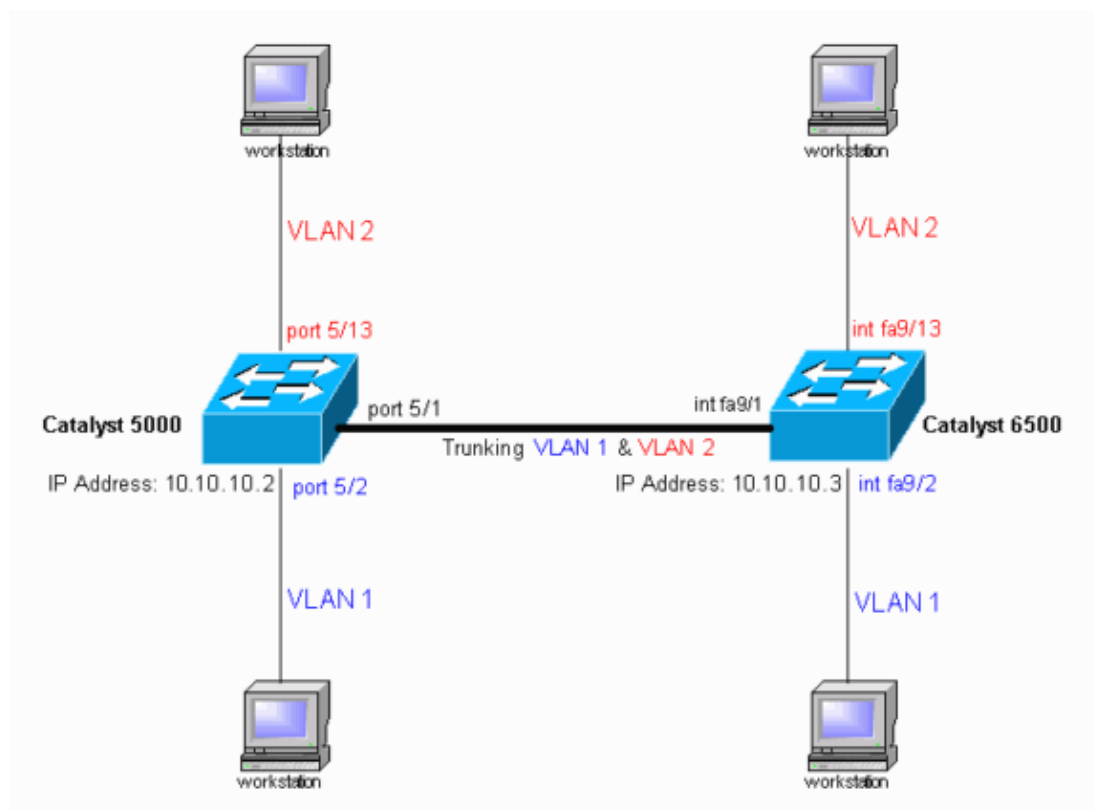
## Configure

In this section, you are presented with the information to configure the features described in this document.

**Note:** Use the Command Lookup Tool (registered customers only) to find more information on the commands used in this document.

## Network Diagram

This document uses this network setup:



## Configurations

This document uses these configurations:

- Catalyst 5000 switch
- Catalyst 6500 switch

**Note:** This document displays comments and explanations in blue italics within the configurations.

## Catalyst 5000 Switch

```
#version 6.1(1)
!
set option fddi-user-pri enabled
set password $2$h$BN$i3S54iNvIXknFelh6gOve0
set enablepass $2$DpAu$/mw1ZxL5I8ymR.yn85ovB/
!
#errordetection
set errordetection portcounter enable
!
#system
set system name cat5000
!
#frame distribution method
set port channel all distribution mac both
!
#vtp

!--- In the example, the VLAN Trunk Protocol (VTP) mode is set to be transparent.
!--- Use your network as a basis to set the VTP mode.

set vtp mode transparent

!--- For details on VTP, refer to Configuring VTP.

set vlan 1 name default type ethernet mtu 1500 said 100001 state active
set vlan 1002 name fddi-default type fddi mtu 1500 said 101002 state active
set vlan 1004 name fddinet-default type fddinet mtu 1500 said 101004 state active stp ieee
set vlan 1005 name trnet-default type trbrf mtu 1500 said 101005 state active stp ibm
set vlan 2
set vlan 1003 name token-ring-default type trcrf mtu 1500 said 101003 state active mode srb aremaxhop 7 stemaxhop 7 backupcrf off
!
#ip

!--- This is the IP address that is used for management.

set interface sc0 1 10.10.10.2/255.255.255.0 10.10.10.255

!
#set boot command
set boot config-register 0x10f
set boot system flash bootflash:cat5000-sup3.6-1-1.bin
!
#mls
set mls nde disable
!
# default port status is enable
!
!
#module 1 : 0-port Supervisor III
!
#module 2 empty
!
#module 3 : 9-port Gigabit Ethernet
!
#module 4 : 24-port 10/100BaseTX Ethernet
!
#module 5 : 24-port 10/100BaseTX Ethernet

!--- Ports 5/13-24 have been assigned to VLAN 2.

set vlan 2 5/13-24
```

```

/--- The ISL trunking mode is set to "on".
/--- Use your network and requirements as a basis to set the trunking mode.

set trunk 5/1 on isl 1-1005

/--- For details on different trunking modes, refer to
/--- Configuring VLAN Trunks on Fast Ethernet and Gigabit Ethernet Ports.

/--- PortFast has been enabled on the ports that are connected to the workstations.

set spantree portfast 5/2-24 enable

/--- For details on why to enable PortFast, refer to
/--- Using PortFast and Other Commands to Fix Workstation Startup Connectivity Delays.

end

```

### Catalyst 6500 Switch

```

Current configuration : 4207 bytes
!
version 12.1
service timestamps debug uptime
service timestamps log uptime
no service password-encryption
!
hostname cat6000
!
boot buffersize 126968
boot bootldr bootflash:c6msfc-boot-mz.121-4.E1.bin
no logging console

/--- The example uses the privileged mode password.

enable password mysecret
!
redundancy
  main-cpu
    auto-sync standard
ip subnet-zero
no ip domain-lookup
!
ip cef
cns event-service server
!
!
!
interface gigabitethernet1/1
  no ip address
  shutdown
!
interface gigabitethernet1/2
  no ip address
  shutdown
!
interface fastethernet9/1
  no ip address

/--- Issue the switchport command once, without any keywords,
/--- in order to configure the interface as a Layer 2 (L2) port for the Catalyst 6500.
/--- For details, refer to Configuring Layer 2 Ethernet Interfaces (Catalyst 6500).
/--- On a Catalyst 4000 switch that runs Cisco IOS Software, all ports are

```

```
!--- L2 ports by default. If there is no change to the default configuration,  
!--- you do not need to issue the switchport command.  
!--- For details, refer to Configuring Layer 2 Ethernet Interfaces (Catalyst 4000).  
  
switchport  
  
!--- Configure trunk encapsulation as ISL.  
  
switchport trunk encapsulation isl  
  
!--- Enable trunking on the interface.  
  
switchport mode trunk  
!  
  
!--- Interfaces Fast Ethernet 9/2 through 9/24 are configured to be in access mode.  
!--- For details, refer to the "Layer 2 Interface Modes" section of  
!--- Configuring Layer 2 Ethernet Interfaces.  
  
interface fastethernet9/2  
no ip address  
switchport  
switchport mode access  
!  
interface fastethernet9/3  
no ip address  
switchport  
switchport mode access  
!  
  
!--- Output suppressed.  
  
!  
interface fastethernet9/11  
no ip address  
switchport  
switchport mode access  
!  
interface fastethernet9/12  
no ip address  
switchport  
switchport mode access  
!  
  
!--- Interfaces Fast Ethernet 9/13 through 9/24 are placed in VLAN 2.  
  
interface fastethernet9/13  
no ip address  
switchport  
switchport access vlan 2  
switchport mode access  
!  
interface fastethernet9/14  
no ip address  
switchport  
switchport access vlan 2  
switchport mode access  
!  
  
!--- Output suppressed.  
  
!  
interface fastethernet9/23  
no ip address  
switchport
```

```

switchport access vlan 2
switchport mode access
!
interface fastethernet9/24
no ip address
switchport
switchport access vlan 2
switchport mode access
!
interface fastethernet9/25
no ip address
shutdown
!

!--- Output suppressed.

!
interface fastethernet9/48
no ip address
shutdown
!
interface vlan1

!--- This is the IP address that is used for management.

ip address 10.10.10.3 255.255.255.0
!
!
ip classless
no ip http server
!
!
!
line con 0
transport input none
line vty 0 4

!--- This example uses the Telnet password.

password mysecret
login
!
end

```

**Note:** If you assign an interface to a VLAN that does not exist, the interface shuts down until you create the VLAN in the VLAN database. For details, refer to the *Creating or Modifying an Ethernet VLAN* section of Configuring VLANs.

## Verify

### show Commands

Use this section to confirm that your configuration works properly.

The Output Interpreter Tool [🔗](#) (registered customers only) (OIT) supports certain **show** commands. Use the OIT to view an analysis of **show** command output.

### Catalyst 5000 or Catalyst 6000 Switches That Run CatOS

- **show port capabilities module/port** Use this command to check if the port is capable of trunking.

```

cat5000> (enable) show port capabilities 5/1
Model                WS-X5234
Port                 5/1
Type                 10/100BaseTX
Speed                auto,10,100
Duplex                half,full
Trunk encap type     802.1Q,ISL
Trunk mode          on,off,desirable,auto,nonegotiate
Channel              5/1-2,5/1-4
Broadcast suppression percentage(0-100)
Flow control          receive-(off,on),send-(off,on)
Security              yes
Membership            static,dynamic
Fast start            yes
QOS scheduling        rx-(none),TX(1q4t)
COs rewrite           yes
ToS rewrite           IP-Precedence
Rewrite               yes
UDLD                  yes
AuxiliaryVlan         1..1000,1025..4094,untagged,dot1p,none
SPAN                  source,destination

```

- **show port module/port** This command shows the status of a particular port and whether it is trunking.

```

cat5000> (enable) show port 5/1
Port  Name                Status      Vlan      Level  Duplex  Speed  Type
-----
  5/1                connected trunk    normal a-full a-100 10/100BaseTX

Port  AuxiliaryVlan  AuxVlan-Status
-----
  5/1  none            none

Port  Security Violation  Shutdown-Time  Age-Time  Max-Addr  Trap      IfIndex
-----
  5/1  disabled  shutdown      0          0          1 disabled  66

Port  Num-Addr  Secure-Src-Addr  Age-Left  Last-Src-Addr  Shutdown/Time-Left
-----
  5/1      0              -          -              -              -

```

*!--- Output suppressed.*

- **show trunk module/port** Use this command to verify the trunking status and configuration.

```

cat5000> (enable) show trunk
* - indicates vtp domain mismatch
Port      Mode      Encapsulation  Status      Native vlan
-----
  5/1      on       isl           trunking   1

Port      Vlans allowed on trunk
-----
  5/1      1-1005

Port      Vlans allowed and active in management domain
-----
  5/1      1-2

Port      Vlans in spanning tree forwarding state and not pruned
-----
  5/1      1-2

```

- **show vtp domain** Use this command to check the VTP information.



```

cat5000> (enable) show vtp domain
Domain Name                               Domain Index VTP Version Local Mode Password
-----
                                         1           2           Transparent -

Vlan-count Max-vlan-storage Config Revision Notifications
-----
6          1023           0           disabled

Last Updater V2 Mode Pruning PruneEligible on Vlans
-----
10.10.10.2   disabled disabled 2-1000

```

## Catalyst 6500/6000 Switches or Catalyst 4500/4000 Switches That Run Cisco IOS Software

- **show interfaces *interface\_type module/port* trunk** This command tells you if the port is trunking.

```

cat6000#show interfaces fastethernet 9/1 trunk

Port      Mode      Encapsulation  Status      Native vlan
Fa9/1    on        isl            trunking    1

Port      Vlans allowed on trunk
Fa9/1     1-1005

Port      Vlans allowed and active in management domain
Fa9/1     1-2,1002-1005

Port      Vlans in spanning tree forwarding state and not pruned
Fa9/1     1-2,1002-1005

```

- **show vlan** This command provides information about the VLANs and the ports that belong to a particular VLAN.

```

cat6000#show vlan

VLAN Name                Status    Ports
-----
1    default                active    Fa9/2, Fa9/3, Fa9/4, Fa9/5
                                           Fa9/6, Fa9/7, Fa9/8, Fa9/9
                                           Fa9/10, Fa9/11, Fa9/12
2    VLAN0002              active    Fa9/13, Fa9/14, Fa9/15, Fa9/16
                                           Fa9/17, Fa9/18, Fa9/19, Fa9/20
                                           Fa9/21, Fa9/22, Fa9/23, Fa9/24

1002 fddi-default          active
1003 token-ring-default    active
1004 fddinet-default       active
1005 trnet-default         active

!--- Output suppressed.

```

**Note:** Only those ports that are configured as L2 nontrunk ports are displayed. For details, refer to the *Configuring Ethernet Interfaces for Layer 2 Switching* section of *Configuring Layer 2 Ethernet Interfaces*.

## Troubleshoot

Use this section to troubleshoot your configuration.

## Switch Does Not Accept a Change of Native VLAN on a Trunk Port Because Port Is a Non-802.1Q Port

This issue occurs because the trunk port does not support 802.1Q encapsulation. A native VLAN requires 802.1Q support on a port. If the port does not have the 802.1Q support, the switch does not allow a change of the native VLAN.

802.1Q support for trunking is a hardware-dependent factor. Issue the **show port capabilities** command in order to check for 802.1Q support. The encapsulation option in the output of the **show port capabilities** command states the 802.1Q support for trunking.

### Related Information

- [LAN Product Support](#)
- [LAN Switching Technology Support](#)
- [Technical Support & Documentation – Cisco Systems](#)

---

[Contacts & Feedback](#) | [Help](#) | [Site Map](#)

© 2014 – 2015 Cisco Systems, Inc. All rights reserved. [Terms & Conditions](#) | [Privacy Statement](#) | [Cookie Policy](#) | [Trademarks of Cisco Systems, Inc.](#)

---

Updated: Apr 25, 2006

Document ID: 8759

---