

Why Doesn't PIM Sparse Mode Work with a Static Route to an HSRP Address?

Document ID: 13783

Contents

Introduction

Prerequisites

Requirements

Components Used

Conventions

Network Diagram

Configurations

Related Information

Introduction

This document explains why multicast packets are not forwarded when you configure a static route to the Hot Standby Router Protocol (HSRP) address of a Protocol Independent Multicast (PIM) sparse mode neighbor.

Prerequisites

Requirements

Readers of this document should have knowledge of these topics:

- HSRP
- PIM sparse mode

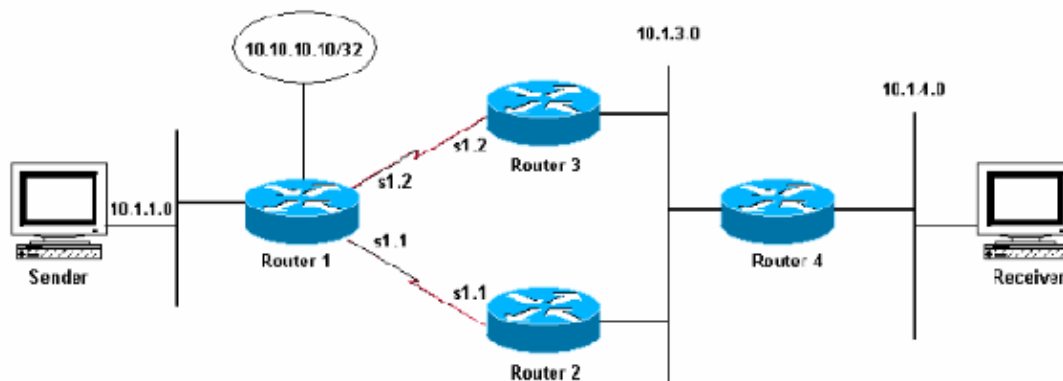
Components Used

This document is not restricted to specific software and hardware versions.

Conventions

For more information on document conventions, refer to Cisco Technical Tips Conventions.

Network Diagram



In the figure above, Routers 2 and 3 are talking HSRP on subnet 10.1.3.0, and Router 2 is the active router. Routers 1, 2, and 3 are talking Enhanced Interior Gateway Routing Protocol (EIGRP), and Router 4 has a static default route to the HSRP virtual address.

Configurations

Router 1	Router 2
<pre> Current configuration: ! ip multicast-routing ! ! interface Loopback0 ip address 10.10.10.10 255.255.255.255 no ip directed-broadcast ! interface Ethernet0 no ip address no ip directed-broadcast shutdown ! interface Ethernet1 ip address 10.1.1.1 255.255.255.0 no ip directed-broadcast ip pim sparse-mode ! interface Serial1 no ip address no ip directed-broadcast encapsulation frame-relay ! interface Serial1.1 point-to-point ip address 10.1.2.1 255.255.255.252 no ip directed-broadcast ip pim sparse-mode frame-relay interface-dlci 612 ! ! interface Serial1.2 point-to-point ip address 10.1.2.5 255.255.255.252 no ip directed-broadcast ip pim sparse-mode frame-relay interface-dlci 613 ! router eigrp 1 network 10.0.0.0 no auto-summary </pre>	<pre> Current configuration: ! ip multicast-routing ip dvmrp route-limit 20000 ! ! interface Ethernet1 ip address 10.1.3.1 255.255.255.0 no ip redirects ip pim sparse-mode standby 1 priority 110 preempt standby 1 ip 10.1.3.3 ! interface Serial1 no ip address encapsulation frame-relay ! interface Serial1.1 point-to-point ip address 10.1.2.2 255.255.255.252 ip pim sparse-mode frame-relay interface-dlci 621 ! router eigrp 1 network 10.0.0.0 no auto-summary ! ip classless ip pim rp-address 10.10.10.10 ! end </pre>

<pre> ! ip classless no ip http server ip pim rp-address 10.10.10.10 ! end </pre>	
Router 3	Router 4
<pre> Current configuration: ! ip multicast-routing ip dvmrp route-limit 20000 ! interface Ethernet1 ip address 10.1.3.2 255.255.255.0 no ip redirects ip pim sparse-mode standby 1 priority 100 preempt standby 1 ip 10.1.3.3 ! interface Serial1 no ip address encapsulation frame-relay ! interface Serial1.2 point-to-point ip address 10.1.2.6 255.255.255.252 ip pim sparse-mode frame-relay interface-dlci 631 ! router eigrp 1 network 10.0.0.0 no auto-summary eigrp log-neighbor-changes ! ip classless no ip http server ip pim rp-address 10.10.10.10 ! end </pre>	<pre> Current configuration: ip multicast-routing ip dvmrp route-limit 20000 ! ! ! interface Ethernet0 ip address 10.1.4.1 255.255.255.0 no ip directed-broadcast ip igmp join-group 239.1.2.3 ! interface Ethernet1 ip address 10.1.3.4 255.255.255.0 no ip directed-broadcast ip pim sparse-mode ! no ip http server ip classless ip route 0.0.0.0 0.0.0.0 10.1.3.3 ip pim rp-address 10.10.10.10 ! end </pre>

In order to simulate a host on Ethernet 0, the **ip igmp join-group** command was configured on this interface on Router 4:

```
router4# ip igmp join-group
```

```

IGMP Connected Group Membership
Group Address Interface Uptime Expires Last Reporter
224.0.1.40 Ethernet1 4d23h never 10.1.3.1
239.1.2.3 Ethernet0 4d23h never 10.1.4.1
end

```

Router 4 also can ping the rendezvous point (RP) address:

```
Type escape sequence to abort.
```

```

Sending 5, 100-byte ICMP Echos to 10.10.10.10, timeout is 2 seconds:
!!!!

```

```
Success rate is 100 percent (5/5), round-trip min/avg/max = 60/61/68 ms
```

Look at the multicast route (mroute) table:

```
Router4# show ip mroute 239.1.2.3
```

```
IP Multicast Routing Table
```

```
Flags: D - Dense, S - Sparse, C - Connected, L - Local, P - Pruned  
R - RP-bit set, F - Register flag, T - SPT-bit set, J - Join SPT  
X - Proxy Join Timer Running
```

```
Timers: Uptime/Expires
```

```
Interface state: Interface, Next-Hop or VCD, State/Mode  
(* , 239.1.2.3), 00:04:28/00:00:00, RP 10.10.10.10, flags: SJCL  
Incoming interface: Ethernet1, RPF nbr 10.1.3.3  
Outgoing interface list:  
Ethernet0, Forward/Sparse, 00:02:12/00:02:53
```

Because there is a receiver for this group (due to the **ip igmp join-group** command used in Router 4), build a (*,G) entry in the mroute table. Note the Reverse Path Forwarding (RPF) neighbor for the (*,G) entry is 10.1.3.3, which is the HSRP standby address. However, there is not a (S,G) entry, which means traffic is not being received from the source.

Since Router 4 has an interested receiver for the group, it now should send a PIM Join/Prune message to its PIM neighbors. Use the **show ip pim neighbor** command to view Router 4's PIM neighbors, as seen below:

```
Router4# show ip pim neighbor
```

```
PIM Neighbor Table
```

```
Neighbor Address Interface Uptime Expires Ver Mode  
10.1.3.1 Ethernet1 4d23h 00:01:41 v2  
10.1.3.2 Ethernet1 4d23h 00:01:36 v2
```

If the **debug ip pim 239.1.2.3** command is enabled, Router 4 is building this PIM Join/Prune message, but it does not actually send it:

```
*Mar 6 18:32:48: PIM: Received RP-Reachable on Ethernet1 from 10.10.10.10 *Mar 6 18:32:48: for group  
239.1.2.3 *Mar 6 18:33:14: PIM: Building Join/Prune message for 239.1.2.3 *Mar 6 18:34:13: PIM: Building  
Join/Prune message for 239.1.2.3
```

Why is the router not sending the Join/Prune message? RFC 2362 [\[4\]](#) states that "a router sends a periodic Join/Prune message to each distinct RPF neighbor associated with each (S,G), (*,G) and (*,*,RP) entry. Join/Prune messages are sent only if the RPF neighbor is a PIM neighbor."

In the example, the RPF neighbor is 10.1.3.3, which is the HSRP standby address used by the default static route. However, this address is not listed as a PIM neighbor. The reason the HSRP standby address is not listed as a PIM neighbor is because the two routers running HSRP (Routers 2 and 3) will not source the PIM neighbor messages from the HSRP standby address.

To solve the problem, change Router 4's configuration so the RPF neighbor is also a PIM neighbor. Do this by including Router 4 in the EIGRP process so that it now learns the RP address through EIGRP.

Note: Since Router 4 has the capability to run a routing protocol it should not have to rely on an HSRP standby address for connectivity. The development of HSRP was intended to offer a way for hosts to gain quick and efficient redundancy or fail-over.

Below is the new configuration of Router 4 with EIGRP enabled.

```
ip multicast-routing  
ip dvmrp route-limit 20000  
!  
!
```

```
!  
interface Ethernet0  
ip address 10.1.4.1 255.255.255.0  
no ip directed-broadcast  
ip igmp join-group 239.1.2.3  
!  
interface Ethernet1  
ip address 10.1.3.4 255.255.255.0  
no ip directed-broadcast  
ip pim sparse-mode  
!  
router eigrp 1  
network 10.0.0.0  
no auto-summary  
!  
no ip http server  
ip classless  
ip route 0.0.0.0 0.0.0.0 10.1.3.3  
ip pim rp-address 10.10.10.10  
!  
end
```

Note: Instead of including Router 4 in the EIGRP process (the preferred method), add static mroutes to Router 4 to make it RPF to the real routers' IP addresses because mroutes are preferred over the unicast routing table in RPF checks. For example, add **ip mroute 0.0.0.0 0.0.0.0 10.1.3.2**.

Related Information

- [HSRP Support Page](#)
- [IP Routed Protocols Support Page](#)
- [Technical Support – Cisco Systems](#)

[Contacts & Feedback](#) | [Help](#) | [Site Map](#)

© 2014 – 2015 Cisco Systems, Inc. All rights reserved. [Terms & Conditions](#) | [Privacy Statement](#) | [Cookie Policy](#) | [Trademarks of Cisco Systems, Inc.](#)

Updated: Aug 10, 2005

Document ID: 13783
