

# ACS Login Banner Configuration Example



Document ID: 116283

Contributed by Minakshi Kumar, Cisco TAC Engineer.  
Jul 11, 2013

## Contents

### Introduction

### Prerequisites

- Requirements

- Components Used

### Configure

### Verify

- GUI

- CLI

### Troubleshoot

## Introduction

This document describes the procedure required in order to configure Login banners on the Cisco Secure Access Control Server (ACS) Release 5.4 CLI and GUI.

## Prerequisites

### Requirements

Cisco recommends that you have knowledge of these topics:

- Initial ACS Configuration
- ACS CLI and GUI Access

### Components Used

The information in this document is based on Cisco Secure ACS Release 5.4.

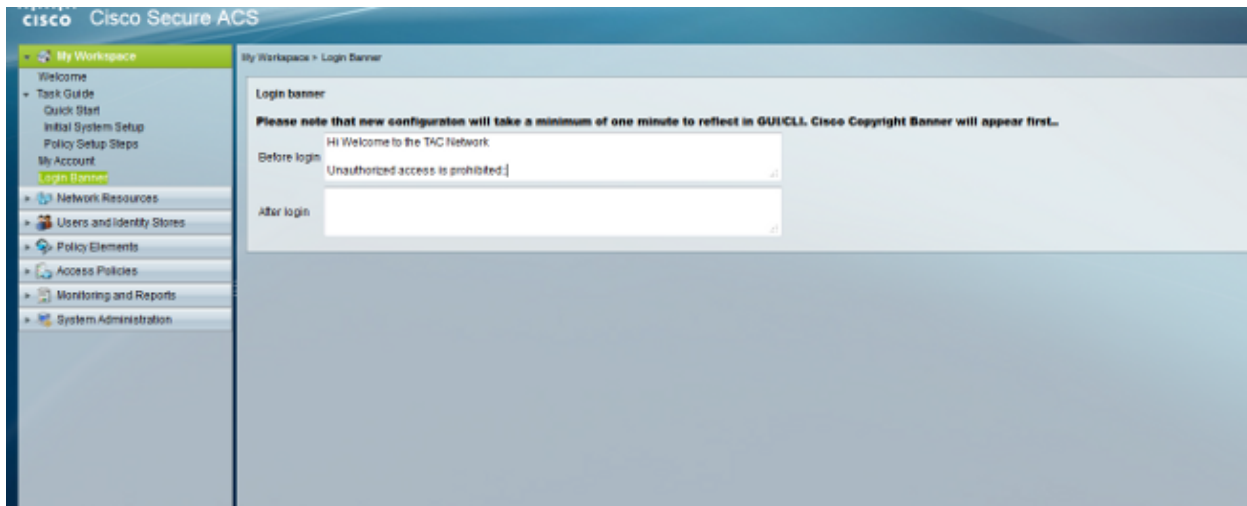
The information in this document was created from the devices in a specific lab environment. All of the devices used in this document started with a cleared (default) configuration. If your network is live, make sure that you understand the potential impact of any command.

## Configure

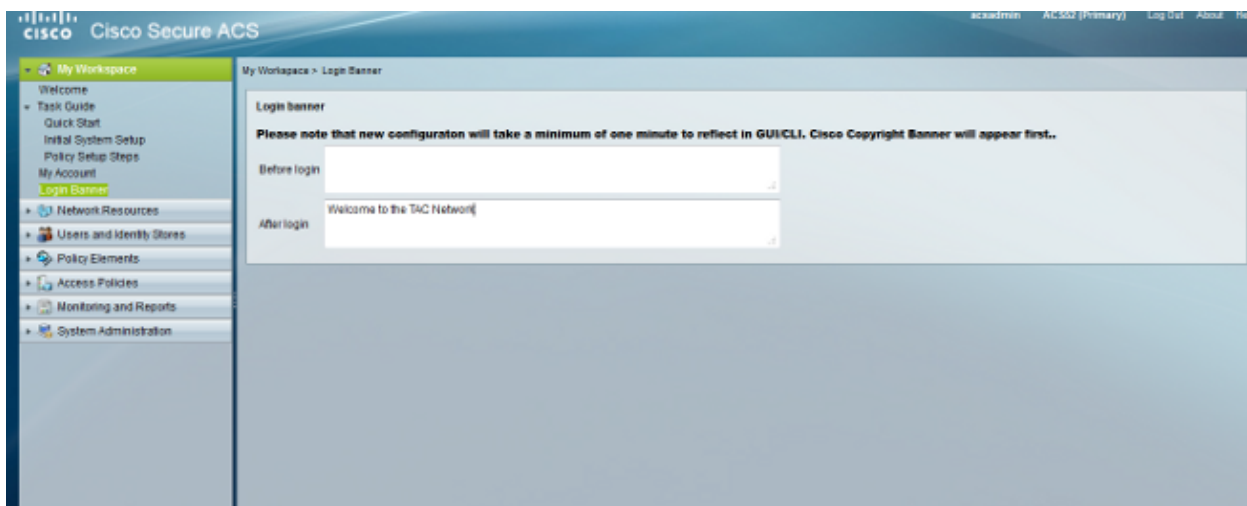
**Note:** The character limit for the "before" and "after" Login banners is 250 characters. You cannot configure separate banners for the CLI and GUI. Use the Command Lookup Tool (registered customers only) in order to obtain more information on the commands used in this section.

In order to configure the Login banners on the ACS CLI and GUI, complete these commands:

1. For the "before" Login banner message, log in to the ACS GUI. Navigate to *My Workspace > Login Banner* and enter the desired "before" Login banner message.



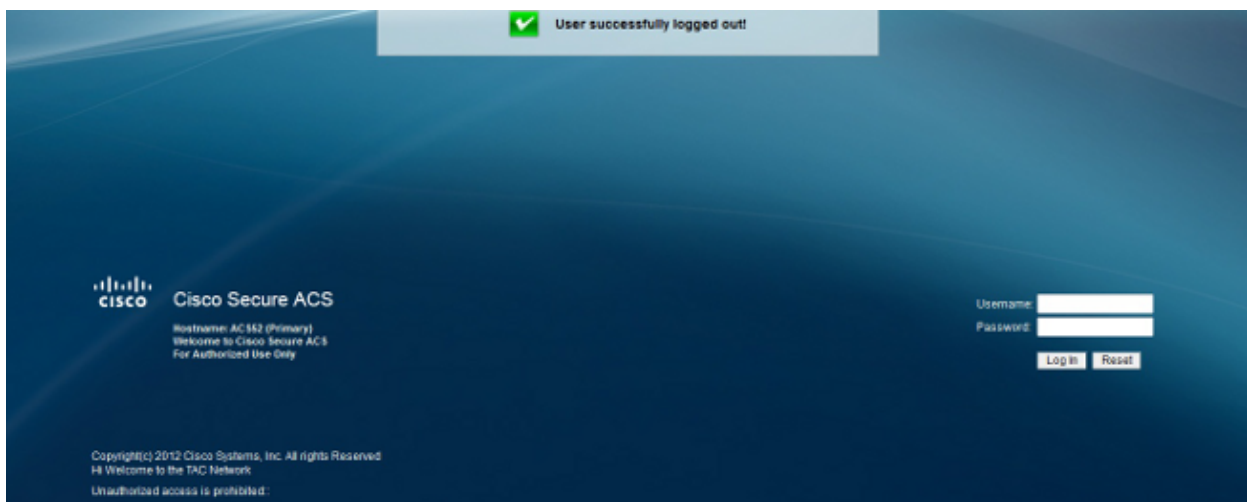
2. From the same location, configure the desired "after" Login banner message.



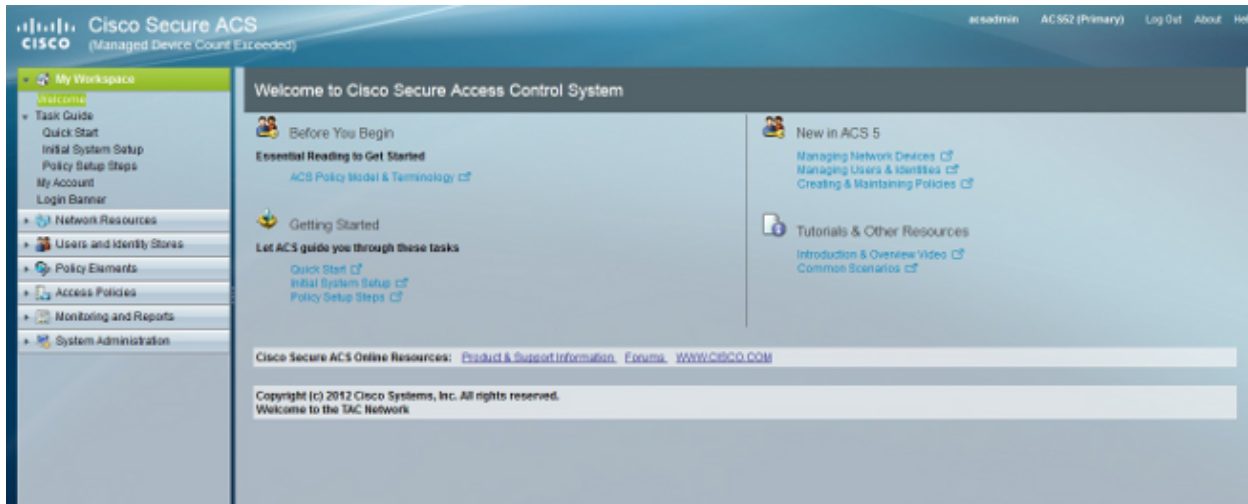
## Verify

### GUI

The "before" Login banner message appears as shown here:

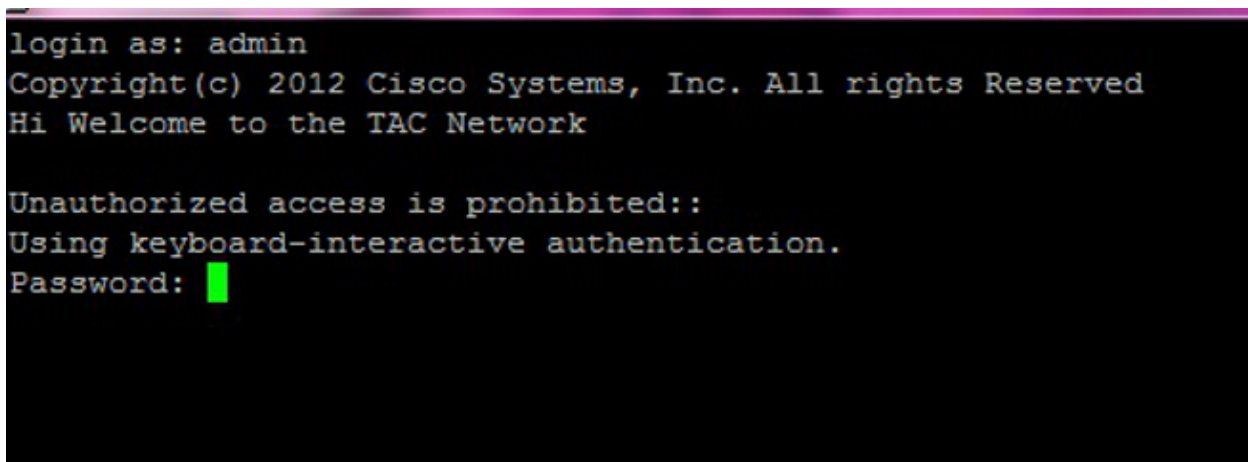


The "after" Login banner message appears as shown here:



## CLI

The "before" Login banner message appears as shown here:



The "after" Login banner message appears as shown here:

```
login as: admin
Copyright(c) 2012 Cisco Systems, Inc. All rights Reserved
Hi Welcome to the TAC Network

Unauthorized access is prohibited::
Using keyboard-interactive authentication.
Password:
Last login: Thu May 23 10:30:06 2013 from 10.78.166.137
Copyright(c) 2012 Cisco Systems, Inc. All rights Reserved
Welcome to the TAC Network
ACS52/admin# █
```

## Troubleshoot

There is currently no specific troubleshooting information available for this configuration.