

Tidal Enterprise Orchestrator: SAP System Copy Add-On Installation Guide

Document ID: 113050

Contents

Introduction

Prerequisites

- Components Used

- Conventions

Procedure

Related Information

Introduction

This document describes how to install the SAP System Copy add-on.

The System Copy for SAP automation pack contains RFC calls that require the Cisco add-on for SAP to be installed on the SAP Target System. The Cisco software add-on must be available on all SAP systems where these RFCs will be used. In order to verify, choose **System > Status**, and review the software component versions for the *CISCO* add-on.

Prerequisites

Components Used

The information in this document is based on Tidal Enterprise Orchestrator 2.1 or later, SAP, and SAP System Copy Content for Tidal Enterprise Orchestrator.

The information in this document was created from the devices in a specific lab environment. All of the devices used in this document started with a cleared (default) configuration. If your network is live, make sure that you understand the potential impact of any command.

Conventions

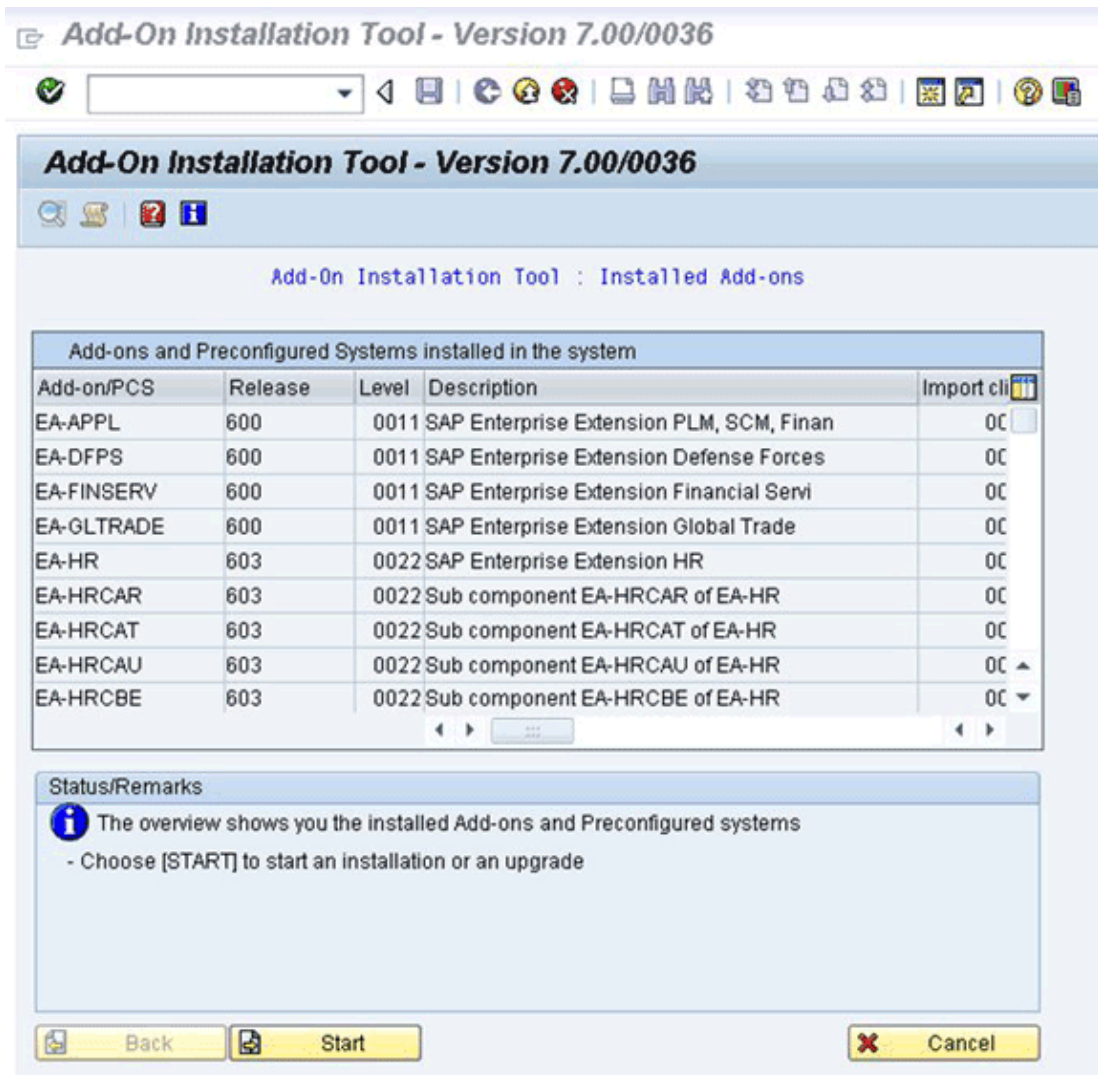
Refer to Cisco Technical Tips Conventions for more information on document conventions.

Procedure

Complete these steps in order to install the SAP add-on:

1. Navigate to the location in which the ABAP Transport data was extracted during the TEO installation. The default location is: *C:\Documents and Settings\user\My Documents\Cisco\Tidal Enterprise Orchestrator\Extracted Data\ABAP Transports\SAP System Copy*
2. Copy the SAP add-on package files (.pat) to this location on the SAP Server (EPS inbox of target SAP System): *usr\sap\trans\EPS\in*
3. Log in to client 000 of the SAP system using an administrator account (*NOT* DDIC or SAP*), and run the transaction code **SAINT**.
4. Click the **Start** button in order to begin the import process, and then follow the steps as directed by

the SAP import wizard.

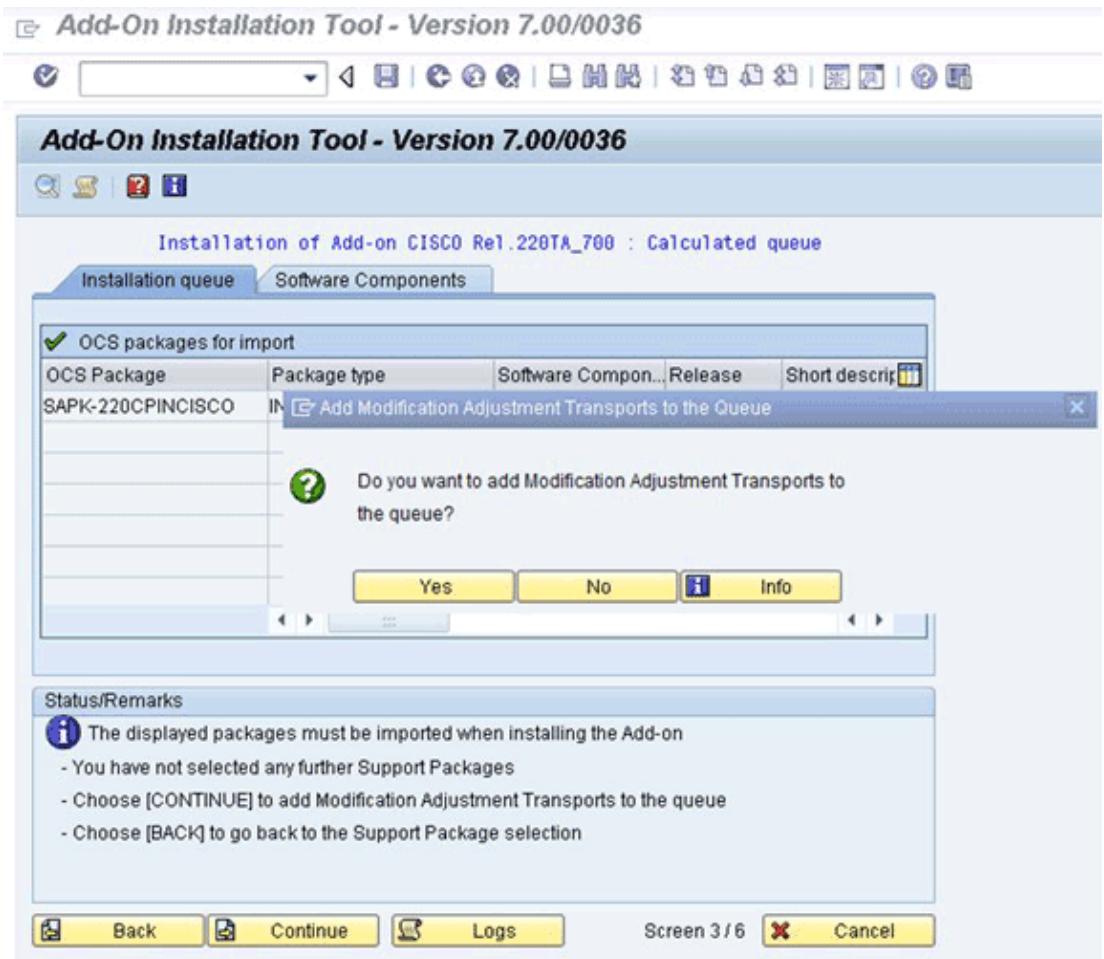


The add-on for Cisco should appear. If it does not appear, then either the file is not in the EPS inbox folder or the login client is not 000.

5. Select the row that displays *CISCO*, and click **Continue**.

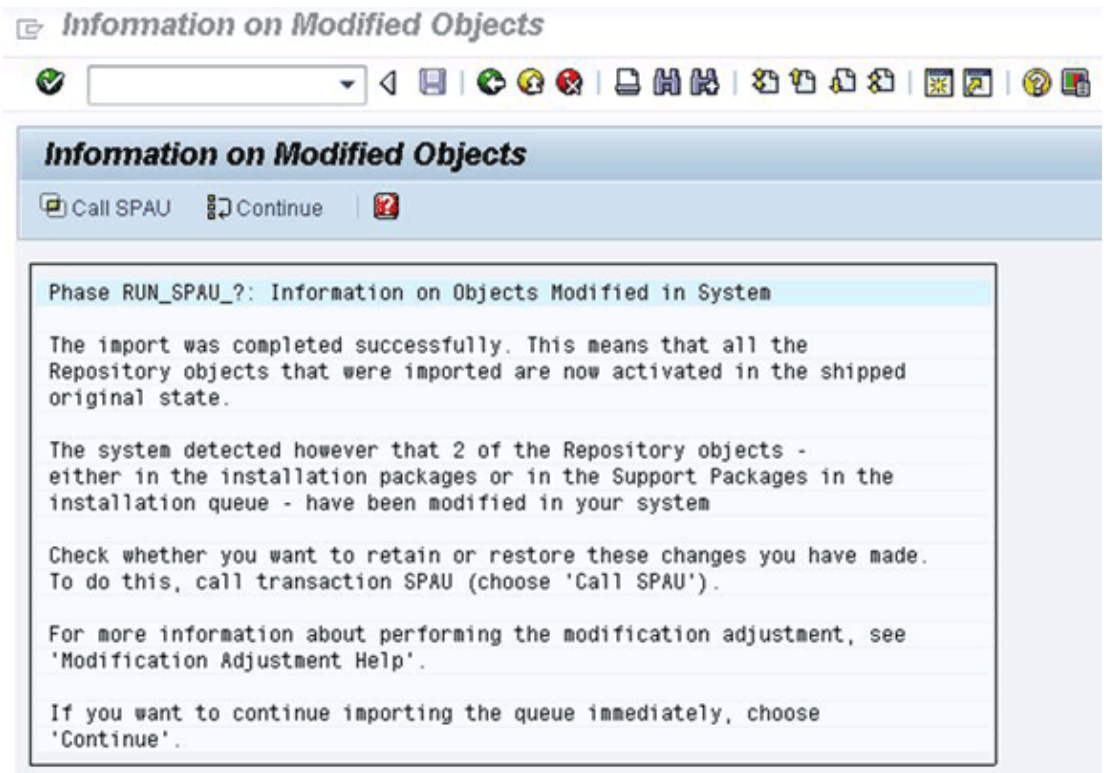
There are no target support packages necessary, but (if directed to do so) provide these in the next screen.

6. Click **Continue**.
7. Review the package, and then click **Continue**.
8. Click **No** to proceed (since there are no modification adjustments necessary).



9. Review the information, and adjust the *Start Options* if necessary.
10. Click **Continue** in order to proceed with the installation. This step might take up to 5 minutes in dialog mode.

If a previous *transport only* version of the Cisco Software is present on the SAP Target system, you might see this window:



11. Call transaction code SPAU, and select **reset to original** for any /CISCO/ namespace objects. This step overwrites the existing Cisco software.
12. If you use SPAU, run it in a separate window, and then return back to the Add-On Installation screen.

Note: In order to run SPAU, the system modification setting for the /CISCO/ namespace must be set to modifiable via SAP Transaction SE03.

13. Click **Continue** in order to continue the installation.

Installation is complete when you see the appropriate message in the Status/Remarks box.

14. Choose **System > Status**, and click the Component version icon (magnifying glass) in order to verify the installation.

In the SAP transaction SE80, packages that begin with /CISCO/*, such as /CISCO/TEO, should exist.

System: Status

Usage data			
Client	000	Previous logon	09.06.2011 21:08:31
User	TIDAL	Logon	21:09:00
Language	EN	System time	21:50:44
		Time zone	CET 10.06.2011 04:50:44

SAP data

Repository data		SAP System data	
Transaction	SAINT	Component version	SAP ECC 6.0
Program (screen)	SAPLSAINT_UI	Installation number	0020236757
Screen number	100	License expiration	31.12.9999
Program (GUI)	SAPLSAINT_UI	Unicode System	Yes
GUI status	SAINT_MAIN		

System: Component information

Software Compon...	Release	Level	Highest Support ...	Short Description of Software Compon
IS-OIL	600	0011	SAPK-60011 INISO	IS-OIL
IS-PS-CA	600	0011	SAPK-60011 INISP	IS-PUBLIC SECTOR CONTRACT ACCI
IS-UT	600	0011	SAPK-60011 INISU	SAP Utilities/Telecommunication
LSOFE	600	0011	SAPK-60011 INLSO	SAP Learning Solution Front-End
SEM-BW	600	0011	SAPK6S6011	SEM-BW: Strategic Enterprise Manager
CISCO	220TA_700	0000	-	Cisco Tidal Intelligent Automation - Tas

Related Information

- [Technical Support & Documentation – Cisco Systems](#)

[Contacts & Feedback](#) | [Help](#) | [Site Map](#)

© 2014 – 2015 Cisco Systems, Inc. All rights reserved. [Terms & Conditions](#) | [Privacy Statement](#) | [Cookie Policy](#) | [Trademarks of Cisco Systems, Inc.](#)

Updated: Jun 14, 2011

Document ID: 113050