

How to Connect to PCA DB with DB Visualizer

Contents

[Introduction](#)

[Prerequisites](#)

[Requirements](#)

[Components Used](#)

[Configure](#)

[Verify](#)

[Troubleshoot](#)

Introduction

This document describes how to connect to Prime Collaboration Assurance (PCA) database (DB) with DB Visualizer. It is frequently used by TAC at the time of troubleshooting sessions.

Prerequisites

Requirements

There are no specific requirements for this document.

Components Used

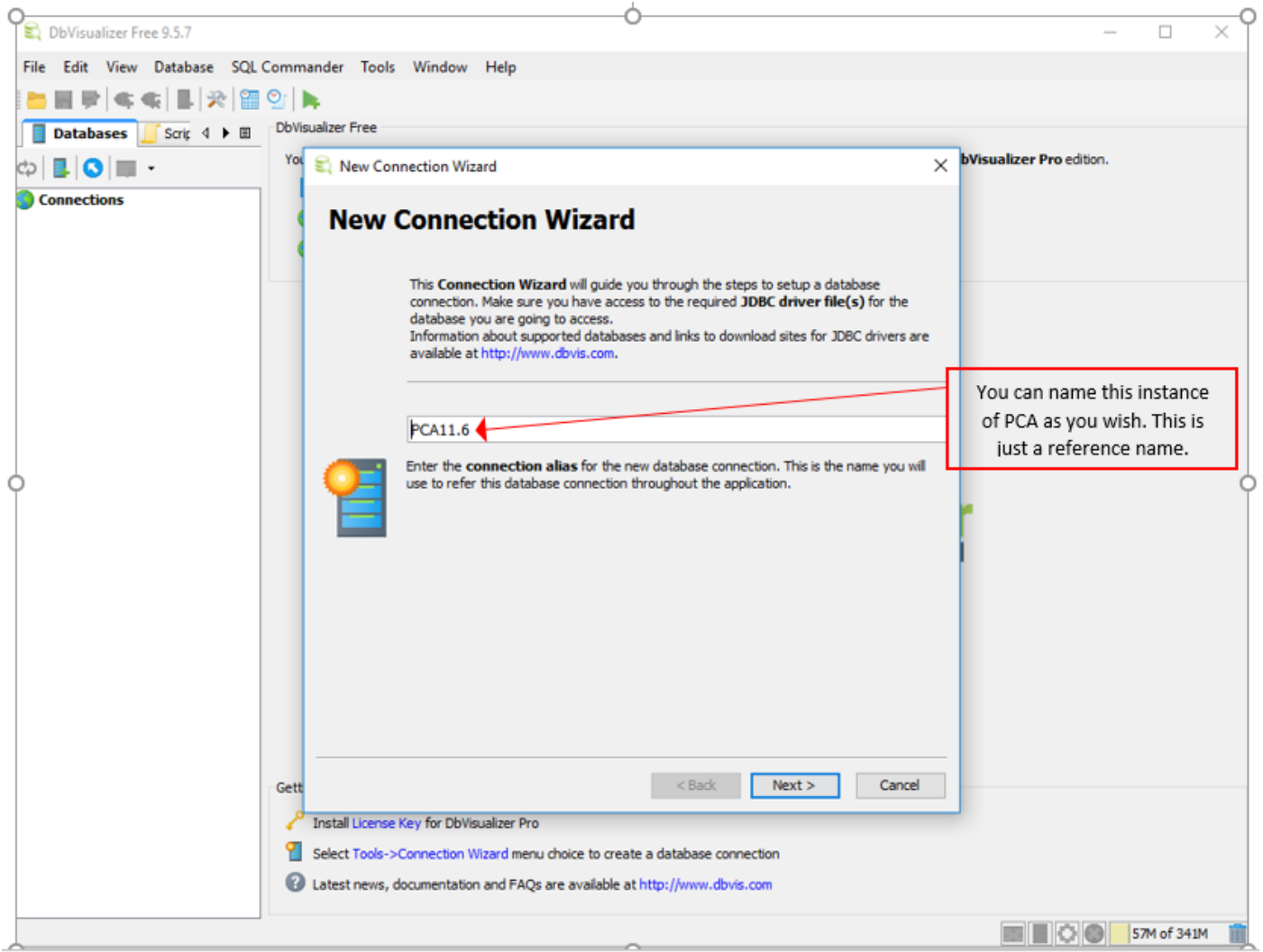
The information in this document is based on these software and hardware versions:

- PCA 11.6
- DB Visualizer

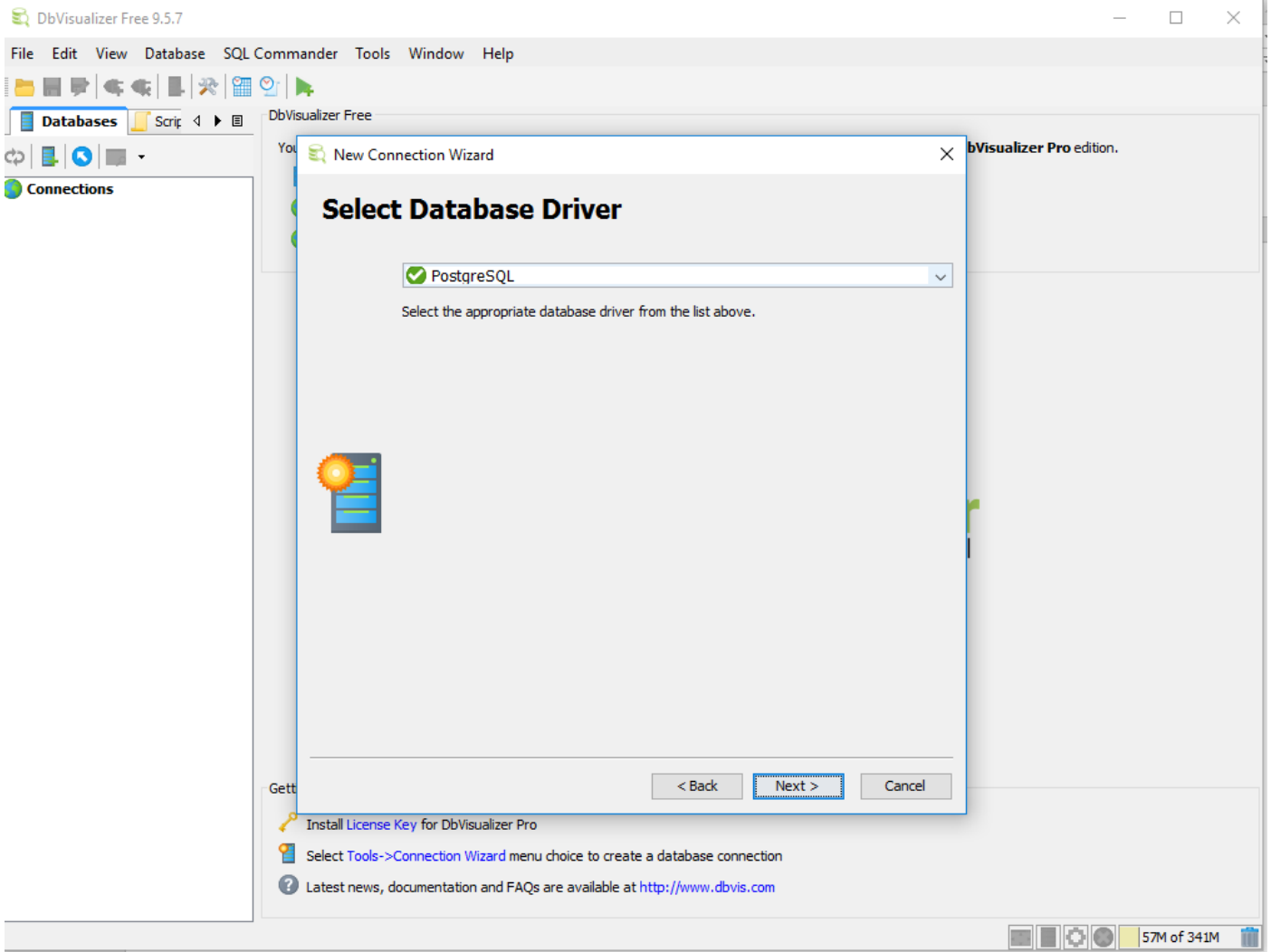
The information in this document was created from the devices in a specific lab environment. All of the devices used in this document started with a cleared (default) configuration. If your network is live, make sure that you understand the potential impact of any command.

Configure

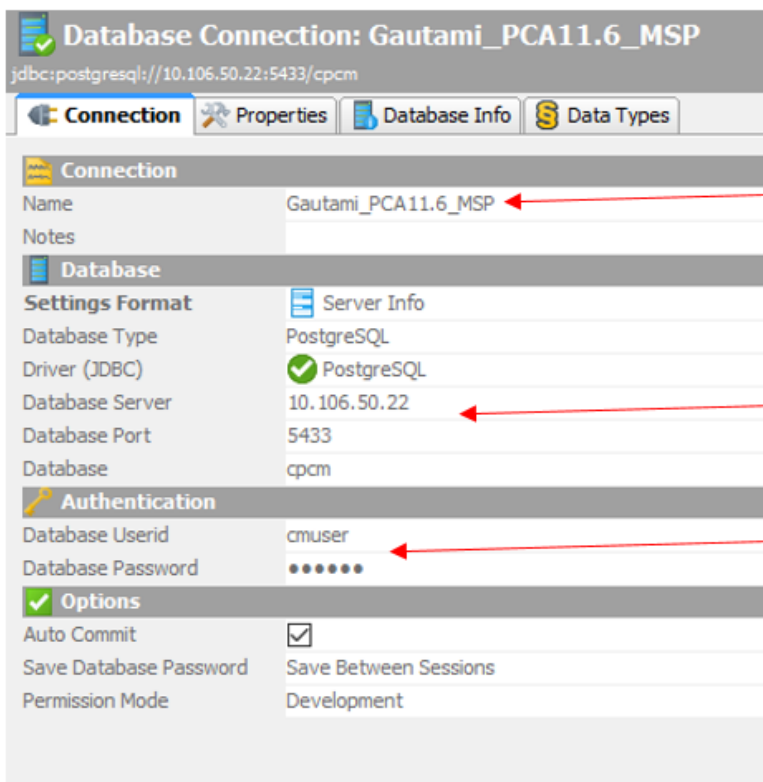
1. Install the DB Visualizer Application and create a new connection as shown in the image.



2. Select the DB Driver as shown in the image.



3. Enter the details to connect to the DB as shown in the image.



You can enter a name of your choice.

Enter IP Address of PCA.
Enter the port to connect to PCA DB

User name and password for cpcm DB is
Username:: cmuser , password:: cmuser

4. Enable the port for DB connection via the PCA CLI.

You need to login as admin user and then switch to root user and then execute this command.

```
pca116 login: admin
Password:
Last login: Tue Sep  5 18:27:10 on tty1
pca116/admin# root
Enter root patch password :
Starting root bash shell ...
ade # /sbin/iptables -A INPUT -p tcp --dport 5433 -j ACCEPT
ade # /etc/init.d/iptables save
Saving firewall rules to /etc/sysconfig/iptables:          [ OK ]
ade # _
```

```
/sbin/iptables -A INPUT -p tcp --dport 5433 -j ACCEPT
```

```
/etc/init.d/iptables save
```

Verify

There is currently no verification procedure available for this configuration.

Troubleshoot

There is currently no specific troubleshooting information available for this configuration.