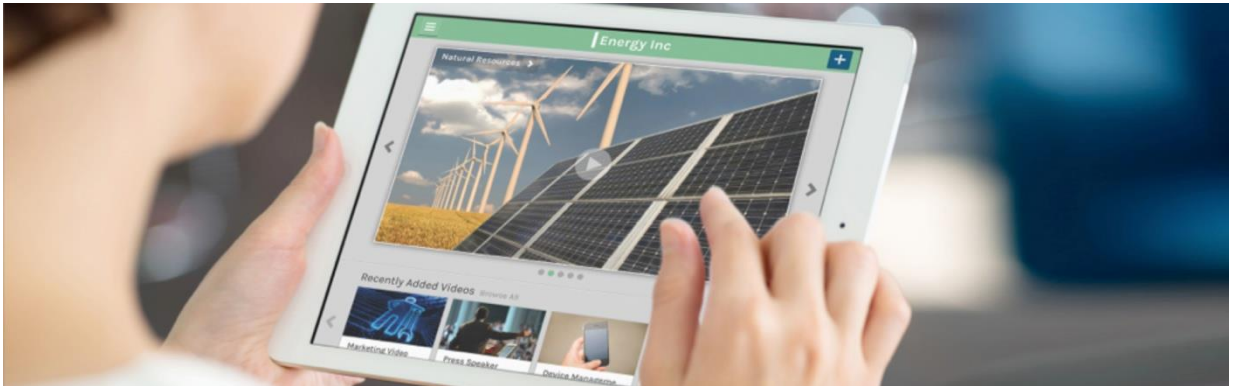


## VBrick Rev for Cisco Unified Communications Solutions



VBrick Rev enables companies to deliver video across a variety of platforms and devices, making enterprise video easier and more manageable than ever before with the widest range of deployment options. Transform business processes with a secure enterprise video platform supported across both mobile and desktop devices.

Rev enables organizations to efficiently deliver high-quality live and on-demand video to enterprisewide audiences, both internally using the corporate WAN and externally across the Internet. Rev allows you to centrally manage video assets, user access, and permissions.

Rev is a cloud-native platform that uses modern web technologies to provide an intuitive interface for end users. Support for both mobile and desktop devices helps ensure that users can watch live and on-demand content from a wide variety of devices. With support for responsive design, the user interface adapts to the device in use, helping ensure an optimal user experience (Figure 1). Rev offers extensive interoperability with Cisco® Unified Communications solutions that enable Cisco customers to unleash a multitude of video-enhanced productivity workflows, including the ability to:

- Automatically ingest Cisco Meeting Server files into the Rev portal, where they can be organized, searched, displayed, and viewed by anyone in an organization or automatically posted into Cisco Spark™ rooms
- Subscribe to relevant Rev video categories and receive and share alerts about new Rev videos with Cisco Spark users
- Join a Cisco WebEx® session and stream, record, and view the video via the cloud through the Rev enterprise video platform, allowing organizations to extend the value of their video conferencing investment with the added benefits of Rev's management, distribution, sources, and integration features
- Record meetings from Cisco TelePresence® endpoints into Rev's sleek, modern video portal, where they can be securely and scalably shared across the organization

- Convert any Cisco endpoint into an HD webcasting studio, using Rev for live, companywide executive broadcasts
- Enable Cisco WebEx users to easily ingest and transcode Cisco WebEx Collaboration Meeting Rooms (CMR) recordings and publish them for only specific users to play back on multiple devices and browsers

Rev also manages the VBrick Distribute Media Engine (DME) enterprise content delivery network (eCDN), providing a single interface to publish and distribute video across the network in a bandwidth-efficient manner.

Flexible deployment options allow enterprises to deploy Rev as a managed service in the cloud, a fully on-premises application, or a combination of cloud and on-premises infrastructure in a hybrid deployment. The hybrid deployment model allows you to combine the application, storage, and management provisioned in the cloud with the DME eCDN functions inside the enterprise network. Each deployment model provides the same rich feature set for users. This next-generation platform provides elasticity, high availability, and redundancy.

Rev uses your organization's Active Directory, Lightweight Directory Access Protocol (LDAP), or single sign-on (SSO) service to authenticate user access to video content. You can use the Rev user dashboard to set up groups, roles, and permissions that enable system administrators and presenters to choose which individuals have access to which content.

Rev supports the most widely used enterprise video applications, including meeting and event broadcasting. Rev is an integrated, browser-based platform for live-streaming events to large audiences inside and outside the enterprise network:

- Training, lecture capture, and corporate communications: Upload video and make it available for playback on a wide variety of devices.
- Internet Protocol Television (IPTV) distribution: Give access to live streaming video in a browser-based interface.

**Figure 1.** Rev Delivers High-Quality Video on a Range of Mobile and Desktop Devices



Table 1 lists the features and benefits, Table 2 describes platform support and compatibility, and Table 3 gives information about browser and player compatibility for the Rev solution.

**Table 1.** Features and Benefits

| Feature                                 | Benefit   |
|---|---|
| <b>Cloud-native architecture</b>        | <ul style="list-style-type: none"> <li>• Scalability</li> <li>• Elasticity</li> <li>• High availability</li> <li>• Excellent performance</li> <li>• Multitenancy</li> </ul>   |
| <b>User-friendly website experience</b> | <ul style="list-style-type: none"> <li>• Modern web design focused on simplicity and responsive design</li> <li>• HTML 5 player enables viewers to customize their playback view from mobile and any device</li> <li>• Single portal for live-streaming events and video on demand (VoD) with advanced keyword audio search capabilities</li> <li>• Intuitive, dynamic interface that increases employee use, especially from mobile devices</li> <li>• Rich media user-generated desktop publishing</li> </ul>   |
| <b>Self-service, secure webcasting</b>  | <ul style="list-style-type: none"> <li>• Schedule events in an easy-to-use web-based interface</li> <li>• Invite users and groups</li> <li>• Enable interactive chat, polling, and advanced team-moderated Q&amp;A</li> <li>• The application helps ensure that your webcasts reach the right viewers with LDAP and SSO integration</li> </ul>  |
| <b>eCDN management console</b>          | <ul style="list-style-type: none"> <li>• Support for multicast using native Adobe® Flash® and unicast distribution of video</li> <li>• Ability to route users to the nearest source of video for optimal WAN use</li> <li>• Automated and intelligent VoD prepositioning and request-directed first-view edge caching</li> <li>• Dynamic live-stream creation and bandwidth optimization</li> <li>• Distributed mesh architecture for streamlined delivery of live and VoD content</li> <li>• Serving and storing of VoD and live-streaming video</li> <li>• Automated device monitoring and failover rules to help ensure reliability</li> </ul> |
| <b>Reporting dashboard</b>              | <ul style="list-style-type: none"> <li>• Graphical dashboard</li> <li>• Event-level data capture</li> <li>• Video performance reports</li> <li>• Ability to track success of your video initiatives with statistics at a glance</li> <li>• Ability to monitor eCDN health</li> </ul>  |
| <b>Flexible deployment models</b>       | <ul style="list-style-type: none"> <li>• On-premises deployment of management system and eCDN</li> <li>• Cloud deployment of one or multiple synchronized management systems</li> <li>• Hybrid deployment of one or multiple synchronized management systems and eCDN on premises</li> </ul>  |

**Table 2.** Platform Support and Compatibility

| Product Family                | Platforms Supported  |
|-------------------------------|--|
| <b>Rev On-Premises</b>        | <ul style="list-style-type: none"> <li>• Cisco Unified Computing System™ (Cisco UCS® platform)</li> <li>• Specification-based x86-64 hardware</li> <li>• VMware ESX and Microsoft Hyper-V hypervisors</li> </ul> |
| <b>Rev Cloud subscription</b> | <ul style="list-style-type: none"> <li>• Cloud service</li> </ul>  |

**Table 3.** Browser and Player Compatibility

| Device                 | OS                                      | Browser  |
|------------------------|---|--|
| <b>PC</b>              | Windows 8.1, 8, and 7                   | Internet Explorer 9+, Firefox 27+, and Chrome 33+                          |
| <b>Mac</b>             | v10.10 (Yosemite) and v10.9 (Mavericks) | Safari 7+, Firefox 27+, and Chrome 33+                                     |
| <b>iPhone and iPad</b> | iOS 7.0+                                | Native browser   |
| <b>Android</b>         | Android 4.1.0                           | Chrome only; Android 4.4 and later will have Chrome as the default browser |

The following video formats are supported for Rev upload:

- Windows Media, Flash, and H.264
- Apple QuickTime (H.264 modified/mov)
- M4V (H.264 video and AAC audio)
- MPEG-2
- MPEG-4
- MPEG-1

Table 4 gives licensing information, Table 5 gives product specifications, and Table 6 lists system requirements. Tables 7 and 8 give ordering information for the VBrick Rev and VBrick Rev Solutions Plus user tier offers, respectively.

**Table 4.** Licensing

|                                 |   |
|---------------------------------|---|
| <b>Named users</b>              | Rev can be licensed on a named-user basis. Any user who is expected to have a named account in the system, either created manually or synchronized with a corporate directory, is required to have a license. |
| <b>Hours</b>                    | Rev can be licensed based on blocks of annual viewing hours (10,000, 50,000, or 100,000). Viewing hours by named user and anonymous viewers count toward annual hour allotment.                               |
| <b>Education: K–20 students</b> | K–20 student access on a named-user basis can be purchased at a reduced cost.   |

**Table 5.** Product Specifications

|                        |  |
|------------------------|--|
| <b>Rev Cloud</b>       | Provides a video platform for managing and accessing live and on-demand video. It includes a user portal and an admin portal as well as reporting functions. It is an annual subscription at a per-user price, hosted on VBrick Cloud, and includes annual support. Included per whole increment of 1000 users is 250 GB of cloud video storage and 500 GB/month of cloud video delivery. Unlimited local delivery through separately purchased DMEs is also included. |
| <b>Rev On Premises</b> | Provides a video platform for managing and accessing live and on-demand video. It includes user and administrative portals and reporting functions. This subscription is for a perpetual per-user price. Support is sold separately. It requires customer-provided hardware.   |

**Table 6.** System Requirements

|                        |  |
|------------------------|--|
| <b>Rev Cloud</b>       | Software-as-a-service (SaaS) offering  |
| <b>Rev On Premises</b> | Minimum system requirements for supported platforms are based on expected usage profile, total named users, total expected concurrent users, and amount of expected VoD storage. Rev On Premises requires a minimum of 5000 users. |

**Table 7.** Ordering Information for the VBrick Rev User Tier Offer

| Top-Level Product ID              | R-VBRICK-USER-SP   | VBrick Rev User Tier Offers  |
|-----------------------------------|--------------------|--|
| <b>Options</b>                    |                    |  |
| <b>Cloud user tiers</b>           | CL-STARTER         | Cloud Rev Starter Portal up to 1000 users                                  |
|                                   | CL-USER-1-2.5K     | Cloud Rev User Tier 1000-2499  |
|                                   | CL-USER-2.5-5K     | Cloud Rev User Tier 2500-4999  |
|                                   | CL-USER-5-10K      | Cloud Rev User Tier 5000-9999  |
|                                   | CL-USER-10-20K     | Cloud Rev User Tier 10,000-19,999  |
|                                   | CL-USER-20-30K     | Cloud Rev User Tier 20,000-29,999  |
|                                   | CL-USER-30K+       | Cloud Rev User Tier 30,000+  |
| <b>External webcast licensing</b> | CL-STUDENT         | Cloud Rev Student User EDU-Only  |
|                                   | EXT-WEBCAST-10000  | Cloud Access – 10,000 annual hours – webcasting, streaming, and recording  |
|                                   | EXT-WEBCAST-50000  | Cloud Access – 50,000 annual hours – webcasting, streaming, and recording  |
|                                   | EXT-WEBCAST-100000 | Cloud Access – 100,000 annual hours – webcasting, streaming, and recording |

| Top-Level Product ID                     | R-VBRICK-USER-SP   | VBrick Rev User Tier Offers   |
|--|--------------------|---|
| <b>Additional storage and bandwidth</b>  | REV-CL-ADD-B/W     | VBrick Rev Standard Cloud – Additional Bandwidth<br>Provides an additional terabyte of bandwidth per month and is sold on annual basis. |
|  | REV-CL-ADD-STORAGE | VBrick Rev Standard Cloud – Additional Storage<br>Provides an additional terabyte of storage per month and is sold on an annual basis.  |
| <b>On-Premises user tiers</b>            | OP-USER-5-10K      | On Prem Rev User Tier 5000-9999   |
|  | OP-USER-10-20K     | On Prem Rev User Tier 10,000-19,999   |
|  | OP-USER-20-30K     | On Prem Rev User Tier 20,000-29,999   |
|  | OP-USER-30K+       | On Prem Rev User Tier 30,000+   |
|  | OP-STUDENT         | On Prem Rev Student User EDU-Only   |
| <b>On-Premises user tier maintenance</b> | OP-MNT-5-10K       | On Prem Rev User Tier Maintenance 5000-9999   |
|  | OP-MNT-10-20K      | On Prem Rev User Tier Maintenance 10,000-19,999   |
|  | OP-MNT-20-30K      | On Prem Rev User Tier Maintenance 20,000-29,999   |
|  | OP-MNT-30K+        | On Prem Rev User Tier Maintenance 30,000+   |
|  | OP-MNT-STUDENT     | On Prem Rev Student User EDU-Only Maintenance   |

**Table 8.** Ordering Information for the VBrick Rev SolutionsPlus User Tier Offers

| Top-Level PID     | VBrick Rev Solutions Plus User Tier Offer |
|-------------------|---|
| <b>CVC-REV-M4</b> | VBrick M4 Server Appliance for VBrick REV |

## Cisco Capital

### Financing to Help You Achieve Your Objectives

Cisco Capital<sup>®</sup> can help you acquire the technology you need to achieve your objectives and stay competitive. We can help you reduce CapEx. Accelerate your growth. Optimize your investment dollars and ROI. Cisco Capital financing gives you flexibility in acquiring hardware, software, services, and complementary third-party equipment. And there's just one predictable payment. Cisco Capital is available in more than 100 countries. [Learn more.](#)



Americas Headquarters  
Cisco Systems, Inc.  
San Jose, CA

Asia Pacific Headquarters  
Cisco Systems (USA) Pte. Ltd.  
Singapore

Europe Headquarters  
Cisco Systems International BV Amsterdam,  
The Netherlands

Cisco has more than 200 offices worldwide. Addresses, phone numbers, and fax numbers are listed on the Cisco Website at [www.cisco.com/go/offices](http://www.cisco.com/go/offices).

Cisco and the Cisco logo are trademarks or registered trademarks of Cisco and/or its affiliates in the U.S. and other countries. To view a list of Cisco trademarks, go to this URL: [www.cisco.com/go/trademarks](http://www.cisco.com/go/trademarks). Third party trademarks mentioned are the property of their respective owners. The use of the word partner does not imply a partnership relationship between Cisco and any other company. (1110R)