

The Future of Data Is Now

Splunk revolutionizes the way customers leverage data to connect and protect every aspect of their organizations.



Available Now!

Bot Risk Scanner (BRS), from Cisco's global OEM partner Radware, is a freemium plug-in for Splunk that provides unparalleled **visibility into the bot traffic and their impact on application performance.**

Download the plug-in at
<https://classic.splunkbase.splunk.com/app/6691/>

50%

Did you know that bot traffic comprises 50% of all traffic on the internet, impacting application performance and costs?

Bot Risk Scanner is available on the Splunk Enterprise Marketplace and can be installed in minutes to analyze your SIEM's HTTP/S logs and identify malicious bot traffic.

Bot Risk Scanner is provided by Cisco's global OEM partner, Radware.

Benefits of Bot Scanner for Splunk



Seamless integration: BRS effortlessly plugs into your existing Splunk infrastructure, requiring no integration on the data path.



Security and compliance: Radware does not store any customer PII (Personal Identifiable Information) on its infrastructure.



Increased visibility and operational efficiency: Gain precise visibility of bot activity impacting your applications, all within your Splunk dashboard.



Free bot analysis: Free analysis of up to 2 million HTTP/S traffic requests per month. Extendable up to 5M at no charge.

Start using BRS today!

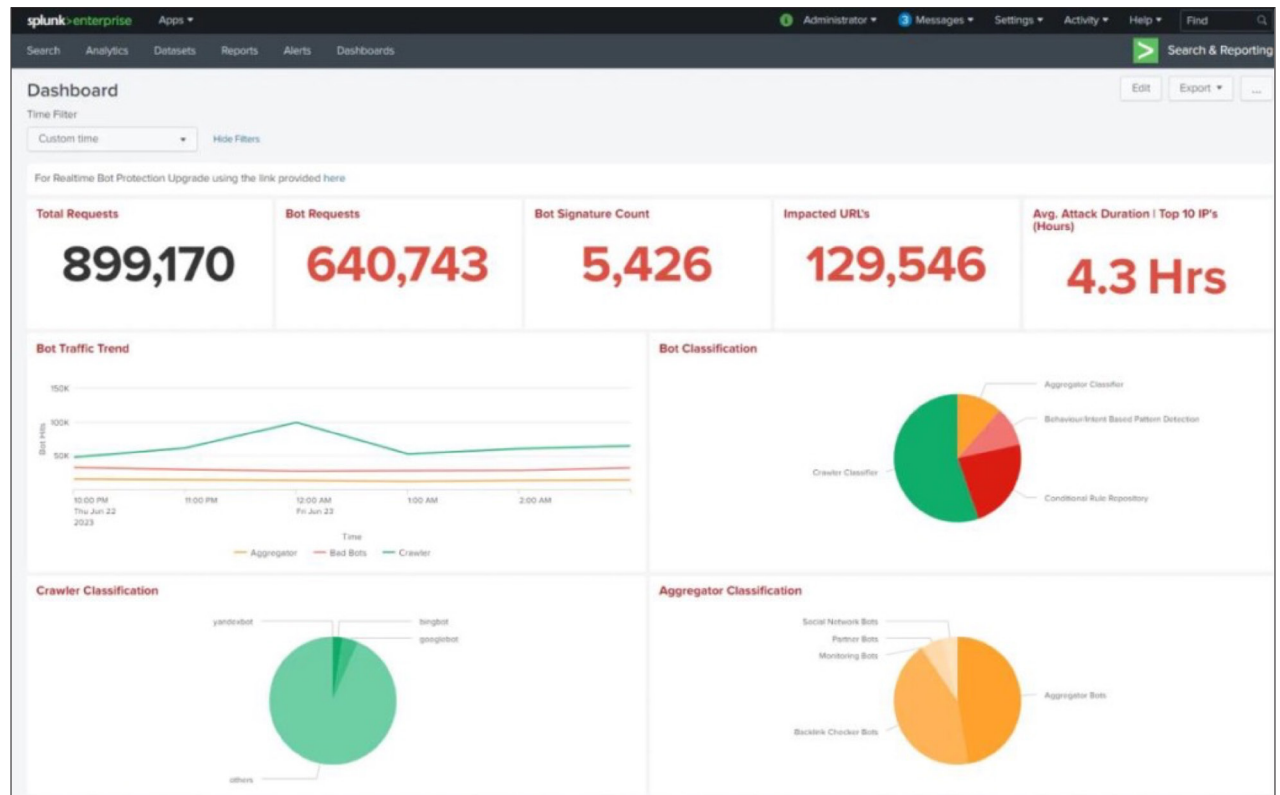
As easy as 1-2-3

Step 1: Go to the Splunk base web page, (<https://classic.splunkbase.splunk.com/app/6691/>), log in, and download the plug-in.

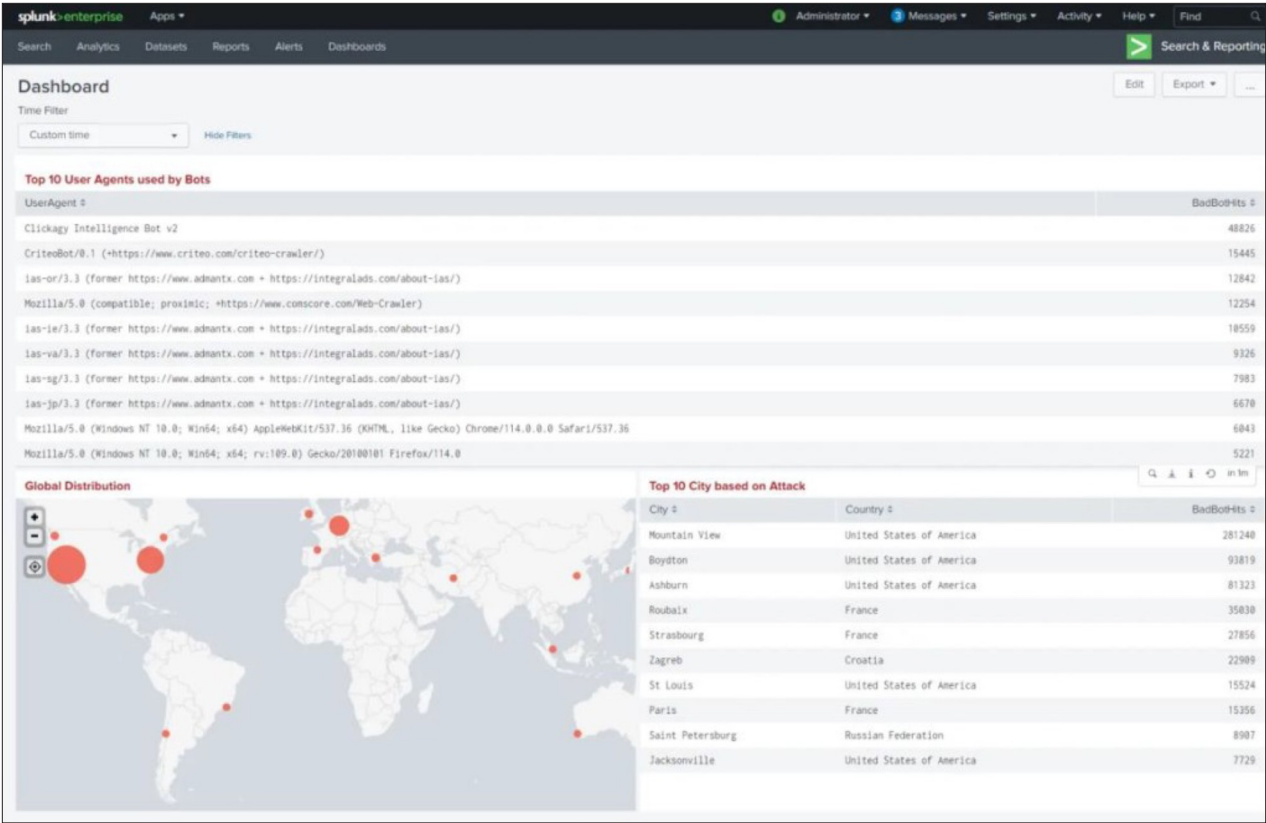
Step 2: Click on the “Details” or the “Installation” tab to view or download the integration / Installation Guide.

Step 3: Follow the easy, step-by-step instructions to install and start using the plug-in!

Splunk dashboard with BRS bot visibility



Download your free plug-in NOW! <https://splunkbase.splunk.com/app/6691>



BRS provides rich, in-depth analysis of bot activity, including total application requests, bad bot requests, bot signatures, impacted URLs, average attack duration, bot traffic trends, bot classification, crawler and aggregator statistics, and origin of attack instances based on country, city, ISP, and domain.

For more information

For inquiries or more information about Bot Risk Scanner, contact us at brs@radware.com.

Bot Risk Scanner is provided by Cisco's global OEM partner, Radware.