

# Cisco RV215W Wireless-N VPN Router

## Simple, Secure Connectivity for the Small Office and Home Office

**Figure 1.** Cisco RV215W Wireless-N VPN Router



The Cisco® RV215W Wireless-N VPN Router provides simple, affordable, highly secure, business-class connectivity to the Internet from small and home offices and remote locations.

The Cisco RV215W has a USB port to enable 3G and 4G WAN connectivity that is perfect for remote regions or temporary connectivity. The RV215W delivers connectivity for small offices and remote workers with a high-speed 802.11n wireless access point; a 4-port 10/100 Mbps Fast Ethernet switch; an intuitive, browser-based device manager; and support for the Cisco FindIT Network Discovery Utility, all at a very affordable price. Its combination of business-class features, support for virtual networks that enable highly secure guest access, simple installation, and top-quality user experience takes basic connectivity for small businesses with five or fewer employees to a new level, delivering support for the latest technologies. See Figure 1.

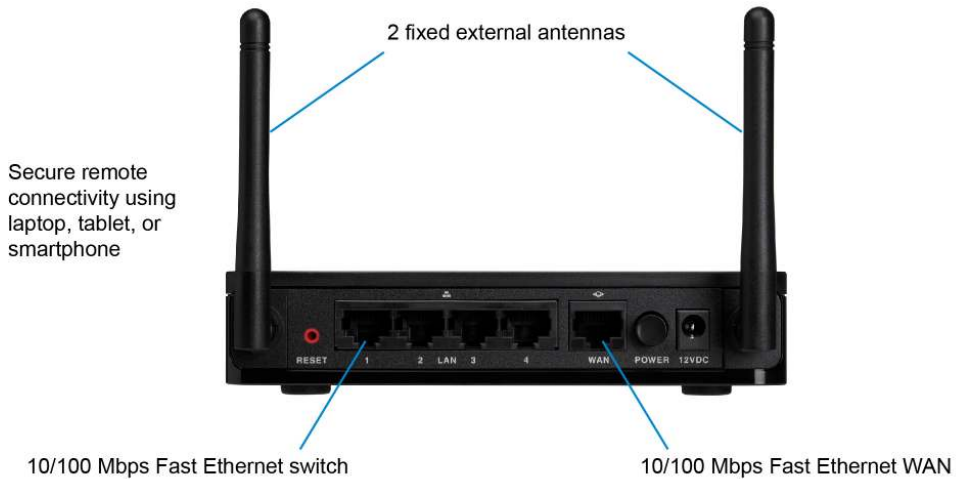
### Product Overview

The Cisco RV215W Wireless-N VPN Router features:

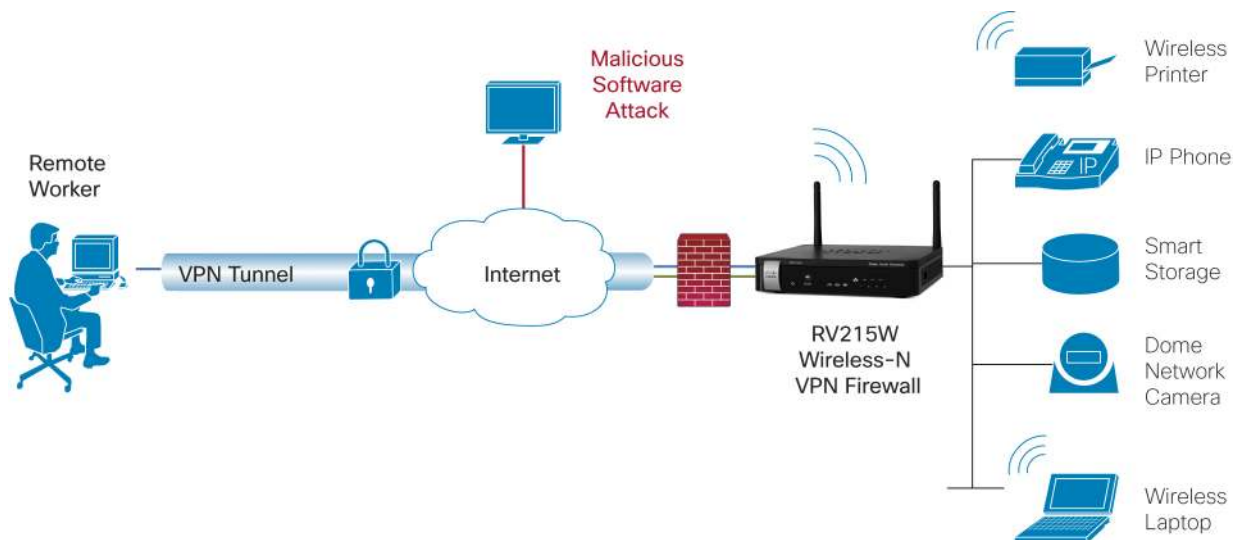
- High-speed, standards-based 802.11n wireless connectivity with fast throughput and broad coverage allows people to remain productive while away from their desks
- Integrated 4-port 10/100 switch easily connects computers, printers, IP phones, cameras, and other devices to your network
- Proven firewall with access rules and advanced wireless security keeps your business assets safe from predators
- Quality of service (QoS) support prioritizes voice, video, and data traffic to keep your business moving
- Separate “virtual” networks limit access to sensitive information and deliver highly secure wireless access to guests
- IP Security (IPsec) and Point-to-Point Tunneling Protocol (PPTP) VPN provides highly secure remote connectivity for Windows and Mac OS computers

- USB port allows 3G and 4G wireless Internet connectivity anywhere (USB data card required)
- IPv6, the latest version of the Internet Protocol, lets you take advantage of the newest technologies
- An intuitive, browser-based device manager gets you up and running quickly, so you can get back to your business
- Support for the Cisco FindIT Network Discovery Utility

**Figure 2.** Back Panel of the Cisco RV215W Wireless-N VPN Router



**Figure 3.** Typical Configuration for Cisco RV215W Wireless-N VPN Router



## Product Specifications

**Table 1.** Product Specifications for the Cisco RV215W

| Feature                  | Description  |
|--------------------------|--|
| Routing                  | <ul style="list-style-type: none"> <li>• Static routing</li> <li>• Dynamic routing</li> <li>• Routing Information Protocol (RIP) v1 and v2</li> <li>• Inter-VLAN routing</li> </ul>  |
| Layer 2                  | <ul style="list-style-type: none"> <li>• 802.1Q-based VLANs</li> <li>• 4 active VLANs (3 to 4094 range)</li> </ul>   |
| Network                  | <ul style="list-style-type: none"> <li>• Dynamic Host Configuration Protocol (DHCP) server</li> <li>• Point-to-Point Protocol over Ethernet (PPPoE)</li> <li>• Point-to-Point Tunneling Protocol (PPTP)</li> <li>• Layer 2 Tunneling Protocol (L2TP)</li> <li>• DNS proxy</li> <li>• DHCP relay agent</li> <li>• IGMP Proxy and multicast forwarding</li> <li>• Rapid Spanning Tree Protocol (RSTP)</li> <li>• Dynamic DNS (DynDNS, TZO, no-ip.com, 3322.org)</li> <li>• Network Address Translation (NAT), Port Address Translation (PAT)</li> <li>• Port management</li> <li>• Port mirroring</li> <li>• Software-configurable network edge (DMZ) to any LAN IP address</li> </ul> |
| IPv6                     | <ul style="list-style-type: none"> <li>• Dual-stack IPv4 and IPv6</li> <li>• 6-to-4 tunneling</li> <li>• Multicast Listener Discovery (MLD) for IPv6 (RFC 2710)</li> <li>• Stateless address auto-configuration</li> <li>• DHCP v6 Server for IPv6 clients on LAN</li> <li>• DHCP v6 client for WAN connectivity</li> <li>• Internet Control Message Protocol (ICMP) v6</li> <li>• Static IPv6 Routing</li> <li>• Dynamic IPv6 Routing with RIP for IPv6 (RIPng)</li> <li>• IPv6 Rapid Deployment</li> </ul>   |
| Security                 | <ul style="list-style-type: none"> <li>• Stateful packet inspection (SPI) firewall</li> <li>• Port forwarding and triggering</li> <li>• Firewall access control lists and content filtering</li> <li>• Denial-of-service (DoS) prevention</li> <li>• MAC-based wireless access control</li> <li>• Static URL blocking or keyword blocking</li> <li>• Schedule-based Internet access policy</li> <li>• HTTPS web access to the device manager</li> <li>• Username/password complexity enforcement</li> <li>• Self-signed SSL certificate</li> <li>• Import and export certificate using Privacy-Enhanced Mail (PEM) format</li> </ul>   |
| VPN                      | <ul style="list-style-type: none"> <li>• 5 IPsec client sessions using Cisco QuickVPN client</li> <li>• 5 PPTP client sessions for remote client access</li> <li>• Triple Data Encryption Standard (3DES)</li> <li>• Support for VPN pass-through of PPTP, L2TP, and IPsec</li> <li>• 1 IPsec site-to-site tunnel for branch office VPN support</li> </ul>   |
| Quality of service (QoS) | <ul style="list-style-type: none"> <li>• 802.1p port-based priority on LAN port, application-based priority on WAN port</li> <li>• 4 priority queues</li> <li>• Differentiated Services Code Point (DSCP) support</li> <li>• Class of Service (CoS)</li> <li>• Bandwidth management for service prioritization</li> </ul>  |

| Feature     | Description   |
|-------------|---|
| Management  | <ul style="list-style-type: none"> <li>• Simple Network Management Protocol (SNMP) v3</li> <li>• Event logging: local, syslog, email alerts</li> <li>• Firmware updates through a web browser</li> <li>• Imported/exported configuration files in simple text format</li> <li>• Simple browser-based configuration (HTTP/HTTPS)</li> <li>• Bonjour and Universal Plug and Play (UPnP)</li> <li>• Network diagnostics: Ping, traceroute, and DNS lookup</li> </ul> |
| Performance | <ul style="list-style-type: none"> <li>• NAT throughput: 90 Mbps</li> <li>• Concurrent sessions: 5000</li> <li>• VPN throughput: 5 Mbps</li> </ul>  |

## Wireless LAN Specifications

**Table 2.** Wireless LAN Specifications for the Cisco RV215W

| Feature                         | Description  |
|---------------------------------|--|
| WLAN hardware                   | <p>IEEE 802.11n standard-based access point with 802.11b/g compatibility</p> <p>Radio and modulation type:</p> <ul style="list-style-type: none"> <li>• 802.11b: direct sequence spread spectrum (DSSS)</li> <li>• 802.11g/n: orthogonal frequency division multiplexing (OFDM)</li> <li>• 2 omnidirectional 1.8 dBi gain fixed external antennas</li> </ul> <p>Operating channels:</p> <ul style="list-style-type: none"> <li>• 11 in North America</li> <li>• 13 in most of Europe</li> <li>• Automatic channel selection</li> </ul> <p>Transmit power:</p> <ul style="list-style-type: none"> <li>• 802.11b: 17 dBm +/- 1.5 dBm</li> <li>• 802.11g: 15 dBm +/- 1.5 dBm</li> <li>• 802.11n: 12.5 dBm +/- 1.5 dBm</li> </ul> <p>Receiver sensitivity:</p> <ul style="list-style-type: none"> <li>• -87 dBm at 11 Mbps</li> <li>• -71 dBm at 54 Mbps</li> <li>• -68 dBm at msc15, HT20 / -66dBm at mcs15, HT40°</li> </ul> |
| Wireless Domain Services (WDS)  | <ul style="list-style-type: none"> <li>• Wireless signals can be repeated by up to 3 compatible devices</li> </ul>   |
| Wi-Fi Multimedia (WMM)          | <ul style="list-style-type: none"> <li>• WMM with QoS (802.11e), WMM power save (WMM-PS)</li> </ul>  |
| Active WLAN clients             | <ul style="list-style-type: none"> <li>• Up to 32 clients</li> </ul>   |
| Service Set Identifiers (SSIDs) | <ul style="list-style-type: none"> <li>• Up to 4 separate wireless networks</li> </ul>   |
| Wireless isolation              | <ul style="list-style-type: none"> <li>• Wireless isolation between clients</li> </ul>   |
| WLAN security                   | <ul style="list-style-type: none"> <li>• WPS (Wi-Fi Protected Setup), Wired Equivalent Privacy (WEP), Wi-Fi Protected Access (WPA) personal and enterprise, WPA2 personal and enterprise</li> </ul>  |

## System Specifications

**Table 3.** System Specifications for the Cisco RV215W

| Feature                                    | Description  |
|--|--|
| WAN  | One 10/100 Mbps Fast Ethernet WAN port   |
| LAN  | Four 10/100 Mbps Fast Ethernet LAN ports   |
| WLAN                                       | Built-in 802.11n wireless access point   |
| LEDs                                       | Power, WPS, WAN, Wireless, LAN (ports 1-4)   |
| Switch                                     | Power button (on/off)  |
| Physical dimensions (W x D x H) and weight | <ul style="list-style-type: none"> <li>• 5.91 in. x 5.91 in. x 1.18 in. (150 mm x 150 mm x 30 mm)</li> <li>• 0.61 lb (0.3 kg)</li> </ul> |

| Feature                       | Description   |
|-------------------------------|---|
| Power                         | 12V 1.67A   |
| Certifications                | <ul style="list-style-type: none"> <li>• FCC Class B</li> <li>• CE</li> <li>• IC</li> <li>• UL</li> <li>• cUL</li> <li>• Wi-Fi</li> <li>• C-Tick</li> </ul>   |
| Environmental operating range | <ul style="list-style-type: none"> <li>• Operating temperature: 0° to 40°C (32° to 104°F)</li> <li>• Storage temperature: -20° to 70°C (-4° to 158°F)</li> <li>• Operating humidity: 10% to 85% noncondensing</li> <li>• Storage humidity: 5% to 90% noncondensing</li> </ul> |

## Configuration Requirements

**Table 4.** Configuration Requirements for the Cisco RV215W

| Feature                 | Description                                |
|-------------------------|--|
| Network adapter         | PC with network adapter and Ethernet cable |
| Web-based configuration | Web browser                                |

## Ordering Information

**Table 5.** Ordering Information for the Cisco RV215W

| Part Number    | Product Name                                   |
|----------------|--|
| RV215W-A-NA-K9 | Cisco RV215W Wireless-N VPN Router (USA)       |
| RV215W-E-G5-K9 | Cisco RV215W Wireless-N VPN Router (Europe)    |
| RV215W-A-AU-K9 | Cisco RV215W Wireless-N VPN Router (Australia) |

## Warranty Information

Find warranty information at Cisco.com on the [Product Warranties](#) page.

## For More Information

For more information, visit

[www.cisco.com/cisco/web/solutions/small\\_business/products/routers\\_switches/small\\_business\\_routers/index.html](http://www.cisco.com/cisco/web/solutions/small_business/products/routers_switches/small_business_routers/index.html)



Americas Headquarters  
Cisco Systems, Inc.  
San Jose, CA

Asia Pacific Headquarters  
Cisco Systems (USA) Pte. Ltd.  
Singapore

Europe Headquarters  
Cisco Systems International BV Amsterdam,  
The Netherlands

Cisco has more than 200 offices worldwide. Addresses, phone numbers, and fax numbers are listed on the Cisco Website at [www.cisco.com/go/offices](http://www.cisco.com/go/offices).

Cisco and the Cisco logo are trademarks or registered trademarks of Cisco and/or its affiliates in the U.S. and other countries. To view a list of Cisco trademarks, go to this URL: [www.cisco.com/go/trademarks](http://www.cisco.com/go/trademarks). Third party trademarks mentioned are the property of their respective owners. The use of the word partner does not imply a partnership relationship between Cisco and any other company. (1110R)