

Cisco Kinetic for Cities Safety and Security Law Enforcement Dashboard (GeoShield)

The Cisco Kinetic for Cities Safety and Security law enforcement dashboard is an intuitive and map-driven software platform for law enforcement agencies and response centers, which supports the roles of real-time policing, investigations, and analysis, along with correctional facilities workflows in support of inmate safety and situational awareness. Its data-driven crime-analytics engine harnesses intuitive workflows and mapping platforms to provide actionable information to law enforcement personnel both in real time and analytical instances. The dashboard has methods to search and display information from social media showcasing the poster's mood, sentiment, and trending words, which provide information to its users to help understand potential criminals, their acts, and their conversations. These include Twitter, Facebook, YouTube, Flickr, Instagram, and more.

The Cisco[®] Kinetic for Cities Safety and Security law enforcement dashboard uses Esri technology to use spatial mapping technology with the use of ArcGIS Server, ArcGIS Online, and ArcGIS Portal so that its users can access their internal systems and infrastructure. Any Geographic Information System (GIS) information previously developed by the agency is now available in this connected and intuitive environment.

Cisco Kinetic for Cities Safety and Security Law Enforcement Dashboard Partner

CyberTech is the leading provider of world-class, advanced technology solutions for businesses and government agencies. Integrating data sources and workflows through mapping and geospatial intelligence, CyberTech delivers state-of-the-art software and services. CyberTech contemporary component-based solutions, backed by an established global delivery model, guarantee consistent quality and are designed to help agencies become more efficient and responsive.

Incorporated in 1995, CyberTech has gained deep industry expertise in smart cities, public safety, and transportation and analytics and has developed a range of advanced solutions using its extensive domain experience and technology leadership. CyberTech's flagship product, GeoShield, caters exclusively to the public safety domain and provides agencies a robust planning and decision support system that aggregates, normalizes, and analyzes data obtained from disparate sources. The analyzed data provides useful insights that aid in planning and making critical decisions that help manage crime and respond to emergencies, thereby making the city a safe and secure place for its citizens.

CyberTech is a publicly traded company and is listed on India's two leading stock exchanges, the Bombay Stock Exchange (BSE) and the National Stock Exchange (NSE). CyberTech is an ISO 9001:2008 and CMMI Level 3 certified company.

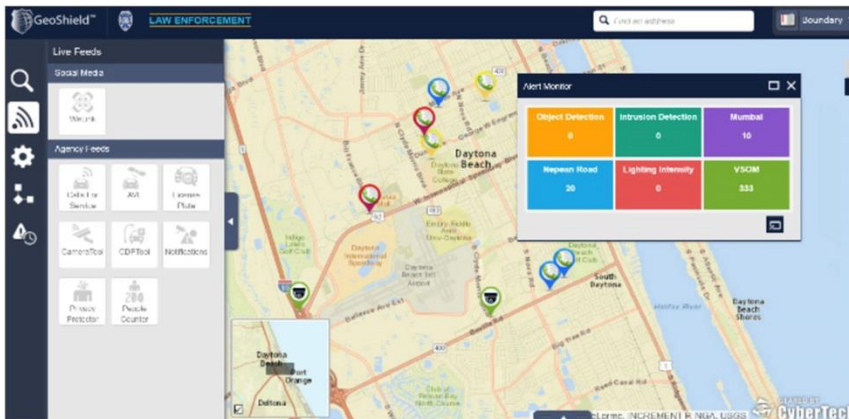
Features

The Cisco Kinetic for Cities Safety and Security law enforcement dashboard features are divided into three major categories with **mission** as the common term. These three missions are further divided into different subsets:

- Law Enforcement mission
- Analytics mission
- Insight mission

Law Enforcement Mission

The Law Enforcement Mission dashboard accesses information from disparate sources and enables the agency to gain deeper insights and provide an optimal response to incidents. With the inclusion of internal agency crime data and built-in analytical and geospatial tools, officers can quickly filter information and receive valuable insights and data from previously disparate data. The Law Enforcement Mission screen is intuitive and easy to understand when enabling data and features and it accesses data in real time, so when the information is captured, it is immediately available to the users. The purpose of all of this information is automation or simplification to get the desired results.



Law Enforcement Mission Features

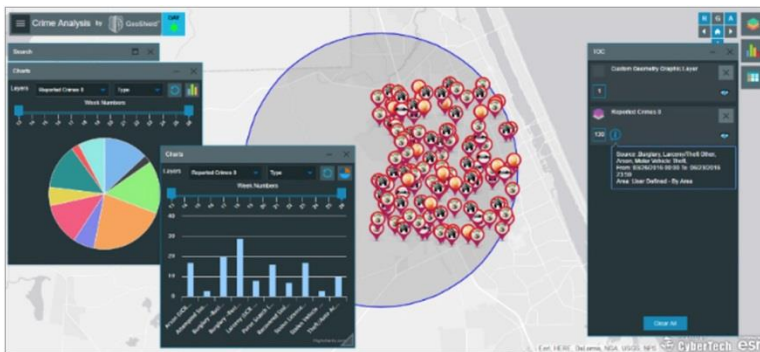
- **Real-time crime mapping and data analysis**
 - RMS: records management
 - CFS: calls for service
 - Additional connection (example: parolee)
 - Additional connection (example: warrants)
 - Attribute searching and filtering
 - Heat mapping
 - Layer selection and filtering
 - Multiple layer select
 - Record counts and labeling
- **Real-time camera integration**
- **Real-time offender mapping and analysis**

- **Situational awareness**
 - FEED: license plate reader
 - FEED: camera
 - Onscreen: license plate reader
 - Find address
 - Locate address
 - Google street view
 - Find coordinate
 - Locate coordinate
 - Draw
 - Measure
- **Threat analysis**
 - Bomb threat
- **Incident planning**
 - Point-to-point navigation
 - Drive time
 - Preplanning
 - Event management
- **Real-time dispatch monitoring**
 - FEED: AVL
 - FEED: computer-aided dispatch
 - Onscreen: computer-aided dispatch
 - *Additional notifications
- **Export**
 - Export to CSV
 - Multiple-layer export
 - Export to PDF
 - Export to ArcGIS online
 - Import from ArcGIS online
- **Social Media Monitoring**
 - Finder (third-party API)
 - Twitter (third-party API)
 - Flickr (third-party API)
 - YouTube (third-party API)
 - Third-party integration (that is, SnapTrends, WeLink)

Analytics Mission

The Analytics Mission dashboard incorporates additional analytics, which are essential when viewing vast amounts of data. This is displayed in easy to understand interactive graphs and charts. The total counts of crime, individuals, and categories can all be filtered and revised to meet your reporting needs.

All of the information is live and responsive to what you want to see. The information come from different data sources and it doesn't store any of the information used for these reports. So you know the information is up to date and accurate based on your own data.



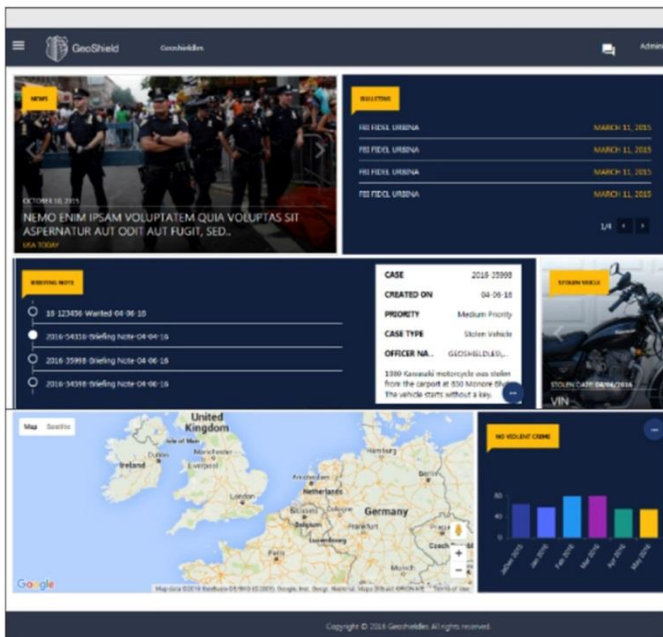
Analytics Mission Features

- **Crime Mapping**
 - Graph and Charts
 - Heat Mapping
- **Identifying Crime Trends**
 - Attribute | Category Analysis
 - Time of Day | Day of Week
 - Hot Spot Analysis
 - Crime Trend | Pattern Detection
 - Dashboard
 - Counting/Tallying
 - Cluster Analysis
- **Correlation Analysis**
 - Query Packs (GeoShield Enforcer)
- **Event Threshold Notification(s)**
- **Crime Reporting (CompStat)**
 - SQL Server Reporting Services Graphs
 - SQL Server Reporting Services Reporting
- **Administrative Reporting**
- **Charting and Graphing**
- **Temporal Grids**
- **Filtering and Search Results**

Insight Mission

Insight Mission dashboard is designed around the concept of a homepage, Insight mission delivers information to users in a simplified interactive webpage. The Insight homepage is both responsive and easy to navigate for users. This dashboard has been designed through consultation with industry professionals and law enforcement professionals who understand the needs of the Criminal Justice Information System (CJIS) and to conform with CJIS requirements, as well as other compliance regulations. Because of this, everything inside of the Insight Homepage is thought of as Intelligence information adhering to 28CFR Compliance. Proper purge intervals as well as retention and permission policies are mandated and put in place. You can protect the information from unwanted parties simply by applying permissions to documents, pages, or the entire environment.

Information is displayed as soon as it is made available. All of the users see the information the moment someone publishes it. This is further increased by the ability to collaborate and converse with one another on Crime Bulletins, Information Bulletins and Department Briefings.



Insight Mission Features:

- **Digital Content Management**
 - Bulletin Lists
 - Requests for Information
 - Request Workflow (E-mail)
 - Suspicious Activity Reports
 - SAR Workflow (E-mail)
 - SharePoint Workflows
 - SharePoint Lists | Document Library
 - Agency Templates (x4) (fax | Letterhead | Info)
 - Briefing Notes
 - Discussion Boards

- **Investigations**
 - Crime Bulletin
 - Briefing Notes
 - Officer Collaboration
 - Photo Lineup Template
 - *Photo Lineup Workflow
 - *Wanted List
 - Automation Workflow
 - *Stolen Vehicle List
 - Automation Workflow
 - GeoShield Enforcer Query Interface
 - Person
 - Place
 - Vehicle
 - Juvenile Photographic Management
 - Person Photographic Management
- **Corrections**
 - CAD (Images) Conversion additional cost
 - Analysis of information inside of Facility
 - Offender offense tracking
 - Offender Location Information
 - Attribute buffering
 - Statistics on Demographics and reporting



Hardware and Software Requirements

The following information is for the setup requirements for a single instance.

Prerequisite

The following table shows hardware and software prerequisites needed to configure the GeoShield application. There are two types of environment mentioned in the sheet below production and testing.

- Production server is the live server on which all the real-time transactions are happening.
- Testing Server is the replica of production server with less hardware specification is used for testing any patch fix or upgrade to mitigate the impact on production server.

GeoShield Application Prerequisites

SharePoint Server (Recommended Specification)

Component	Production	Testing
Hardware		
CPU	E5-2660 v3, 2.6 Ghz, 25MB Cache	E5-2609 v4, 1.7 Ghz, 20MB Cache
Cores	10	8
RAM	24 GB	16GB
Storage	300GB, 10K RPM, HDD	300GB, 10K RPM, HDD
Virtualization	VMware	VMware
Software		
OS	Microsoft Windows Server	Microsoft Windows Server
	Windows Server 2012 SP1 (if to be used with SharePoint 2013)	Windows Server 2012 SP1 (if to be used with SharePoint 2013)
	Windows Server 2012 R2 (if to be used with SharePoint 2013 SP1)	Windows Server 2012 R2 (if to be used with SharePoint 2013 SP1)
MS SharePoint	SharePoint 2013 Standard	SharePoint 2013 Standard
	Standard License CALs – Specific number TBD	Standard License CALs – Specific number TBD
	Installation of SQL Management Studio on SharePoint 2013 Server Machine (for testing and connectivity validation)	Installation of SQL Management Studio on SharePoint 2013 Server Machine (for testing and connectivity validation)

SQL Server (Recommended Specification)

Component	Production	Testing
Hardware		
CPU	E5-2609 v4, 1.7 Ghz, 20MB Cache	E5-2609 v4, 1.7 Ghz, 20MB Cache
Cores	8	8
RAM	16 GB	16 GB
Storage	300GB, 10K RPM, HDD	300GB, 10K RPM, HDD
Virtualization	VMware	VMware
Software		
OS	Microsoft Windows Server	Microsoft Windows Server
	Windows Server 2012 SP1 (if to be used with SharePoint 2013)	Windows Server 2012 SP1 (if to be used with SharePoint 2013)
	Windows Server 2012 R2 (if to be used with SharePoint 2013 SP1)	Windows Server 2012 R2 (if to be used with SharePoint 2013 SP1)
SQL Server	Microsoft SQL Server 2008 or Newer	Microsoft SQL Server 2008 or Newer
	Named instance (provisioned DB inside current environment) to support the SharePoint 2013 databases and SQL Server Account Access with listed accounts (see 3.2.3)	Named instance (provisioned DB inside current environment) to support the SharePoint 2013 databases and SQL Server Account Access with listed accounts (see 3.2.3)

MS Office Web Application Server (Optional) (Recommended Specification)

Component	Production	Testing
Hardware		
CPU	E5-2640 v3, 2.6 Ghz, 20MB Cache	E5-2609 v4, 1.7 Ghz, 20MB Cache
Cores	10	8
RAM	24GB	16GB
Storage	300GB, 10K RPM, HDD	300GB, 10K RPM, HDD
Virtualization	VMware	VMware
Software		
OS	Microsoft Windows Server	Microsoft Windows Server
	Windows Server 2012 SP1 (if to be used with SharePoint 2013)	Windows Server 2012 SP1 (if to be used with SharePoint 2013)
	Windows Server 2012 R2 (if to be used with SharePoint 2013 SP1)	Windows Server 2012 R2 (if to be used with SharePoint 2013 SP1)
Microsoft Web Apps Server	Office Web Apps Server you must have a license, under a Volume Licensing agreement (free with this agreement)	Office Web Apps Server you must have a license, under a Volume Licensing agreement (free with this agreement)

GeoShield Application Web Server

Component	Production	Testing
Hardware		
CPU	E5-2660 v3, 2.6 Ghz, 25MB Cache	E5-2609 v4, 1.7 Ghz, 20MB Cache
Cores	10	8
RAM	24 GB	16GB
Storage	300GB, 10K RPM, HDD	300GB, 10K RPM, HDD
Virtualization	VMware	VMware
Software		
OS	Microsoft Windows Server	Microsoft Windows Server
	Windows Server 2012 SP1 (if to be used with SharePoint 2013)	Windows Server 2012 SP1 (if to be used with SharePoint 2013)
	Windows Server 2012 R2 (if to be used with SharePoint 2013 SP1)	Windows Server 2012 R2 (if to be used with SharePoint 2013 SP1)

ArcGIS Server

Component	Production	Testing
Hardware		
CPU	E5-2660 v3, 2.6 Ghz, 25MB Cache	E5-2609 v4, 1.7 Ghz, 20MB Cache
Cores	10	8
RAM	24 GB	16GB
Storage	300GB, 10K RPM, HDD	300GB, 10K RPM, HDD
Virtualization	VMware	VMware
Software		
Supported OS (only x64 supported) Any one of the following OS can be used	Windows Server 2012 R2 Standard and Datacenter (April 2014)	Windows Server 2012 R2 Standard and Datacenter (April 2014)
	Windows Server 2012 Standard and Datacenter	Windows Server 2012 Standard and Datacenter
	Windows Server 2008 R2 Standard, Enterprise, and Datacenter SP1	Windows Server 2008 R2 Standard, Enterprise, and Datacenter SP1

Component	Production	Testing
	Windows Server 2008 Standard, Enterprise, and Datacenter SP2	Windows Server 2008 Standard, Enterprise, and Datacenter SP2
	Windows 10 Pro and Enterprise	Windows 10 Pro and Enterprise
	Windows 8.1 Pro and Enterprise (Apr 2014)	Windows 8.1 Pro and Enterprise (Apr 2014)
	Windows 8 Pro and Enterprise	Windows 8 Pro and Enterprise
	Windows 7 Ultimate, Professional, Enterprise, and Home Premium SP1	Windows 7 Ultimate, Professional, Enterprise, and Home Premium SP1

Sizing Matrix

GeoShield is sized using “number of users” as the metric. The recommended minimum specifications for GeoShield are valid for 1 to 250 users. The following table provides the sizing:

# Users	Infrastructure Requirement
up to 50	1 x GeoShield Application Web Server [*] 1 x ArcGIS Server
51 - 150	1 x GeoShield Application Web Server ^{**} 1 x SQL Server 1 x ArcGIS Server
150 - 250	1 x GeoShield Application Web Server 1 x SharePoint Server 1 x SQL Server 1 x ArcGIS Server

Note:

^{*} (GeoShield Application + SharePoint + SQL) installed on the same server.

^{**} (GeoShield Application + SharePoint) installed on the same server.

Ordering Information

Product SKU	Product Support SKU	Description
SS-CIM-GS-Base=		Geoshield Software, CDP Integration, 4 Data Source [*] and 20 User License
	SS-CIM-GS-Base-1Y	Geoshield Platform Software Upgrade and Support Services for 12 Months
SS-CIM-GS-1DS=		Geoshield Data Source [*] License
	SS-CIM-GS-1DS-1Y	Geoshield Data Source Software Upgrade and Support Services for 12 Months
SS-CIM-GS-1UR=		Geoshield Platform User License
	SS-CIM-GS-1UR-1Y	Geoshield Platform User Software Upgrade and Support Services for 12 Months

Year 2 Onward Support SKU	
Support SKU	Description
SS-CIM-GS-Base-1Y=	Geoshield Platform Software Upgrade and Support Services for 12 Months
SS-CIM-GS-1DS-1Y=	Geoshield Data Source [*] Software Upgrade and Support Services for 12 Months
SS-CIM-GS-1UR-1Y=	Geoshield Platform User Software Upgrade and Support Services for 12 Months

^{*} Data source: Different kind of databases and web services from law enforcement.

Cisco Capital

Financing to Help You Achieve Your Objectives

Cisco Capital[®] financing can help you acquire the technology you need to achieve your objectives and stay competitive. We can help you reduce CapEx, accelerate your growth, and optimize your investment dollars and ROI. Cisco Capital financing gives you flexibility in acquiring hardware, software, services, and complementary third-party equipment. And there's just one predictable payment. Cisco Capital is available in more than 100 countries. [Learn more.](#)




Americas Headquarters
Cisco Systems, Inc.
San Jose, CA

Asia Pacific Headquarters
Cisco Systems (USA) Pte. Ltd.
Singapore

Europe Headquarters
Cisco Systems International BV Amsterdam,
The Netherlands

Cisco has more than 200 offices worldwide. Addresses, phone numbers, and fax numbers are listed on the Cisco Website at <https://www.cisco.com/go/offices>.

 Cisco and the Cisco logo are trademarks or registered trademarks of Cisco and/or its affiliates in the U.S. and other countries. To view a list of Cisco trademarks, go to this URL: <https://www.cisco.com/go/trademarks>. Third-party trademarks mentioned are the property of their respective owners. The use of the word partner does not imply a partnership relationship between Cisco and any other company. (1110R)