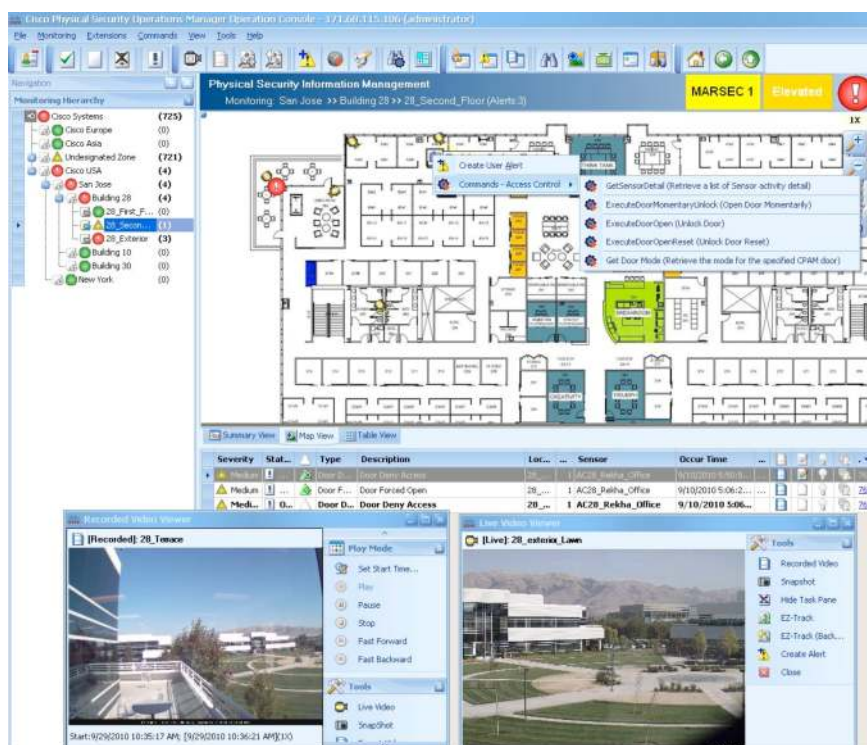


Cisco Physical Security Operations Manager 5.1

Cisco® Physical Security Operations Manager is a scalable command and control style operator console that unifies management and operation of Cisco Video Surveillance Manager, Cisco Physical Access Manager, and the Cisco IP Interoperability and Collaboration System (IPICS). The Physical Security Operations Manager integrates security alarms and events from multiple sources, consolidates device management into a single location, and displays information on easy-to-use and intuitive maps, providing efficient data visualization and allowing seamless access to live and stored video and access-controlled doors (Figure 1). The Physical Security Operations Manager is powered by a sophisticated business logic engine, enabling users to create custom workflows to support use cases that cross all product domains and helping to mitigate risk across an enterprise by providing actionable intelligence, speeding security incident resolution, and reducing security operations costs.

Figure 1. Cisco Physical Security Operations Manager 5.1



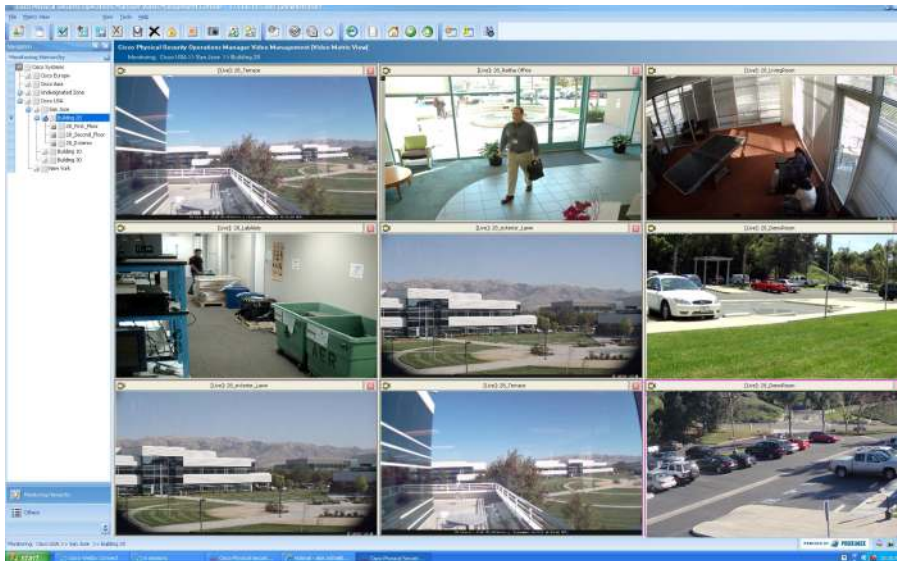
Key Features

Centralized Monitoring and Control of Thousands of Cisco IP Cameras and Access Control Devices

Cisco Physical Security Operations Manager provides the scalability required to monitor thousands of IP cameras streaming video through multiple Video Surveillance Managers deployed in a distributed environment.

- Interactive geospatial maps and tree.** The Cisco Physical Security Operations Manager provides a complete view of facilities, sensors, and alarms in an easy-to-use and intuitive graphical interface. Operators navigate the interactive map by clicking on security zones and areas or by using the hierarchical tree view. The hierarchical maps allow segregation of responsibilities and visibility for different security groups.
- Control security sensors, devices, and resources.** Interactive maps allow operators to click on an IP camera or a door reader and take control directly through the Cisco Physical Security Operations Manager interface. Operators are able to execute a wide range of actions in their domain, such as viewing live and recorded video, taking control of PTZ cameras, executing door commands, taking photo snapshots, and exporting video, just to name a few.
- Video matrix and guard tour.** Video streams can be presented to the operator in individual windows or in a matrix view (Figure 2). The video windows can also be configured to rotate through camera views based on predefined camera sequences and times.
- Centralized alarm management.** The centralized console allows generated alarms to be automatically shown on the maps. Based on user preferences, alarm details can be automatically displayed, or displayed by an operator with one click of a mouse.

Figure 2. Video Streams



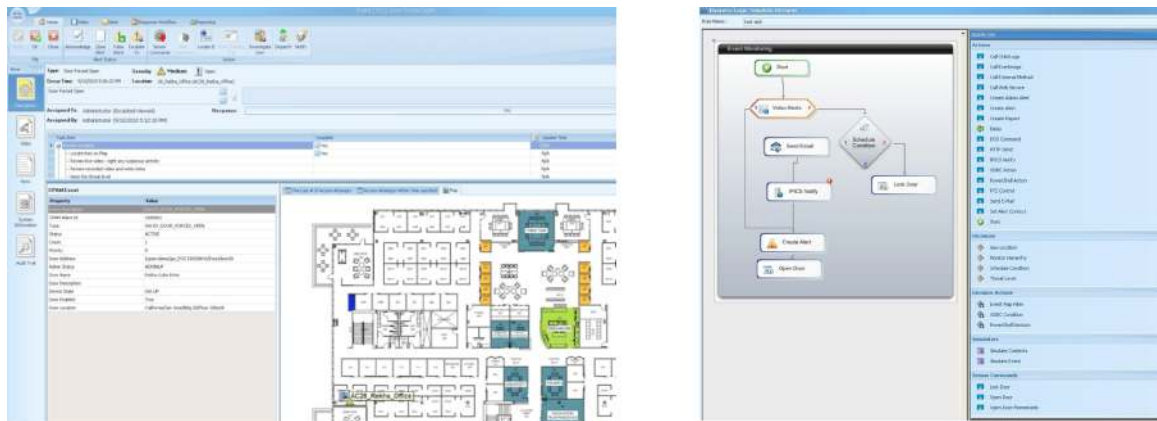
Incident Assessment and Business Logic Builder

Cisco Physical Security Operations Manager intelligently connects and correlates security events and alarms, minimizing false alarms while enabling the security team to respond in real time following predefined business logic. Operators immediately see all the relevant details of an alarm—there's no need to search through multiple windows or systems to find the relevant information. Information available to operators includes:

- **Alarm details.** Provides specific information about the alarm, the system that generated the alarm, and the location on a map.
- **Live and recorded video.** Records video starting seconds prior (configurable) to the alarm.
- **Response tasks and instructions.** Provides instructions for the tasks operators must take to respond to and clear a priority alarm. Ensures a consistent response to recurring alarms as well as to critical alarms that rarely occur.
- **Operator notes.** Notes page enables operators to capture observations associated with the alarm.
- **Security system control.** Enables operators to take actions on cameras, security doors to temporarily open or lock/unlock a door.
- **Incident reporting.** Security teams can create consolidated incident reports (incident dossiers) and exported video within seconds. These reports can be used for management reporting or forensic purposes, and they include all alarm details, photos, access attempts, mini-maps, and video files.

Business logic is used to escalate or filter alarms based on predefined conditions. When alarms are escalated, the Physical Security Operations Manager will guide operator response with specific management actions and instructions that should be taken when certain alarms are raised. The business logic templates capture the business processes and requirements for alarm creation and response based on the alarm's status, schedule, monitoring area, or threat level. Business logic allows security personnel to concentrate on execution of planned responses instead of reassessing unfolding situations.

Figure 3. Incident Assessment and Business Logic Builder



Advanced Trend Reporting

The Advanced Reporting Functional Module enables security operators, supervisors, and managers to track and trend alarms by time, sensor, location, and type to facilitate proactive management of security resources and systems.

- **Reporting engine.** A simple-to-use, wizard-driven reporting engine quickly generates reports based on alarms generated in the system across each of the incident reporting subsystems.
- **Predefined reports.** Cisco Physical Security Operations Manager provides a variety of predefined reports for common inquiries, allowing fast access to the information needed to make important business decisions.
 - **Incident reports.** Incidents can be viewed by incident type, location, time/date, and severity for a specified period of time: a date range, for example, or daily, weekly, or yearly.
 - **Trend reports.** Trends can be viewed in minutes and then printed, exported to multiple file formats, or sent via email to select people or groups. Reports can also be generated across multiple security systems.

Tables 1 through 3 list key integration features of Cisco Physical Security Operations Manager.

Table 1. Key Integration Features with Cisco Physical Access Manager

Features
Automatic or on-demand import of all sensors (doors, gateway inputs that do not belong to any doors, power fail inputs, and tamper inputs)
Ability to define custom policies regarding which Physical Access Manager alarms should appear in the Physical Security Operations Manager, as well as what to correlate and what actions should be taken (by default, all door and reader alarms show up in the Physical Security Operations Manager)
One-click execution of access door commands (lock, unlock, etc.) from the operator's window
Automatic trigger of access door commands based on predefined policies
Association of door alarms with relevant video
Bidirectional update of incident status in both Cisco Physical Security Operations Manager and Cisco Physical Access Manager
List of access attempts through a particular door
Retrieval of user information based on badge identification

Table 2. Key Integration Features with Cisco Video Surveillance Manager

Features
Easy import of all camera sensors from multiple media servers or Video Surveillance Operations Managers
Ability to define custom policies regarding which Video Surveillance Manager alarms appear in the Physical Security Operations Manager, as well as what to correlate and what actions should be taken
Simultaneous access to live and recorded video in individual windows or in a matrix view (2x2, 3x3, or 4x4)
Rotation of camera views at predefined sequences and times via Video Guard feature
One-click access to live and archived video from the operator's window
Control of PTZ cameras
One-click video snapshot
DVR-type controls (rewind, fast forward)
Ability to track the path of suspects across multiple camera views via EZ-Track feature

Table 3. Key Integration Features with Cisco IPICS

Features
Automatic or one-click dispatch of incidents, complete with details and relevant video, to Cisco IPICS server
Automatic or one-click execution of policies defined on the Cisco IPICS server

Table 4 lists technical specifications for Cisco Physical Security Operations Manager Enterprise and Lite versions.

Table 4. Technical Specifications for Physical Security Operations Manager

	Enterprise Version	Lite Version
Hardware	2-RU Cisco Multi Services Platform	1-RU or a 2-RU Cisco Multi Services Platform
Operating System	Windows 2008 R2 64-bit	Windows 2008 R2 64-bit
SQL Server	SQL Server 2008 Standard	SQL Server 2008 Standard
Physical Security Operations Manager Software	Version 5.1	Version 5.1
Hard Disk Capacity	6 TB RAID 6	2 TB RAID 1 (1RU); 6 TB RAID 6 (2RU)
Power Supply	Dual	Single

Table 5 lists the requirements for the Cisco Physical Security Operations Manager client software.

Table 5. Client Software Requirements

	Cisco Physical Security Operations Manager Client
CPU	Intel 950 i7 Core - 3.07 GHz
Memory	6 GB DDR3
Windows OS	Windows XP SP3, Windows 7
Internet Explorer	Version 7
Video Adapters	NVIDIA GeForce GTX260 896MB PCIe

Table 6 lists the versions of different solution components that interoperate with Cisco Physical Security Operations Manager.

Table 6. Physical Security Operations Manager Solution Components

Product/Solution	Version
Cisco Video Surveillance Manager	6.3.1
Cisco Video Surveillance Operations Manager	6.3.1
Cisco Physical Access Manager	1.2
Cisco IP Interoperability and Collaboration System (IPICS)	4.0

Ordering Information

To place an order, visit the Cisco Ordering Home Page (<http://www.cisco.com/en/US/ordering/index.shtml>) and refer to Table 7.

Table 7 lists Cisco Physical Security Operations Manager part numbers.

Table 7. Part Numbers

Product Name	Part Number
Enterprise Edition	
Cisco Physical Security Operations Manager Enterprise Edition	CPS-OM5.1-ENT
Cisco Physical Security Operations Manager 10-Sensor License Bundle	CPS-OM5.1-10EP
Cisco Physical Security Operations Manager 100-Sensor License Bundle	CPS-OM5.1-100EP
Cisco Physical Security Operations Manager 500-Sensor License Bundle	CPS-OM5.1-500EP
Cisco Physical Security Operations Manager 1000-Sensor License Bundle	CPS-OM5.1-1000EP
Cisco Physical Security Operations Manager 2500-Sensor License Bundle	CPS-OM5.1-2500EP
Cisco Physical Security Operations Manager 5000-Sensor License Bundle	CPS-OM5.1-5000EP

Product Name	Part Number
Cisco Physical Security Operations Manager—Standard Client	CPS-OM5.1-USTD
Cisco Physical Security Operations Manager—Premium Client (with IPICS Support)	CPS-OM5.1-UPREM
Lite Edition	
Cisco Physical Security Operations Manager Lite Edition (includes license for 250 sensors)	CPS-OM5.1-LITE
Cisco Physical Security Operations Manager Lite—Upgrade from 250 to 500 sensors	CPS-OM5.1-LITE-250
Cisco Physical Security Operations Manager—Upgrade from Lite to Enterprise edition	CPS-OM5.1-ENT-UPG

Service and Support

Cisco and our certified partners can help you accelerate success and improve the return on your investment in a Cisco Physical Security Solution. The Cisco lifecycle approach to services defines the requisite activities at each phase of the solution lifecycle:

- Reduce deployment costs by identifying the features that will best meet your business requirements
- Accelerate migration by assessing the readiness of your network to support the system and by developing a sound design
- Support smooth implementation through effective planning and expert installation, configuration, and integration
- Increase operational efficiency and extend the value of your investment with award-winning technical support

For more information about Cisco services, visit <http://www.cisco.com/go/services>.

For More Information

For more information about the Cisco Physical Security Operations Manager, visit <http://www.cisco.com/go/physicalsecurity> or contact your local account representative.

For more information about the Cisco End-of-Life Policy, go to http://www.cisco.com/en/US/products/products_end-of-life_policy.html.

To subscribe to receive end-of-life/end-of-sale information, go to <http://www.cisco.com/cgi-bin/Support/FieldNoticeTool/field-notice>.



Americas Headquarters
Cisco Systems, Inc.
San Jose, CA

Asia Pacific Headquarters
Cisco Systems (USA) Pte. Ltd.
Singapore

Europe Headquarters
Cisco Systems International BV Amsterdam,
The Netherlands

Cisco has more than 200 offices worldwide. Addresses, phone numbers, and fax numbers are listed on the Cisco Website at www.cisco.com/go/offices.

Cisco and the Cisco Logo are trademarks of Cisco Systems, Inc. and/or its affiliates in the U.S. and other countries. A listing of Cisco's trademarks can be found at www.cisco.com/go/trademarks. Third party trademarks mentioned are the property of their respective owners. The use of the word partner does not imply a partnership relationship between Cisco and any other company. (1005R)