

Cisco Transport Manager Release 9.0



Product Overview

Cisco® Transport Manager is an intelligent, carrier-class element management system (EMS) that efficiently manages the entire Cisco ONS family of optical transport products, which includes traditional time-division multiplexing (TDM) SONET/SDH, Ethernet/IP, and dense wavelength-division multiplexing (DWDM) services as well as Cisco MGX® 8880 Media Gateway and voice-enabled Cisco MGX 8850 and MGX 8830 Multiservice Switches.

Cisco Transport Manager supports configuration, fault, performance, and security management and serves as a foundation for integration into a larger operation support system (OSS) environment.

High availability, self-healing processes, and comprehensive management across different types of Cisco devices give service providers and large enterprises a resilient, adaptable, and integrated carrier-class EMS solution.

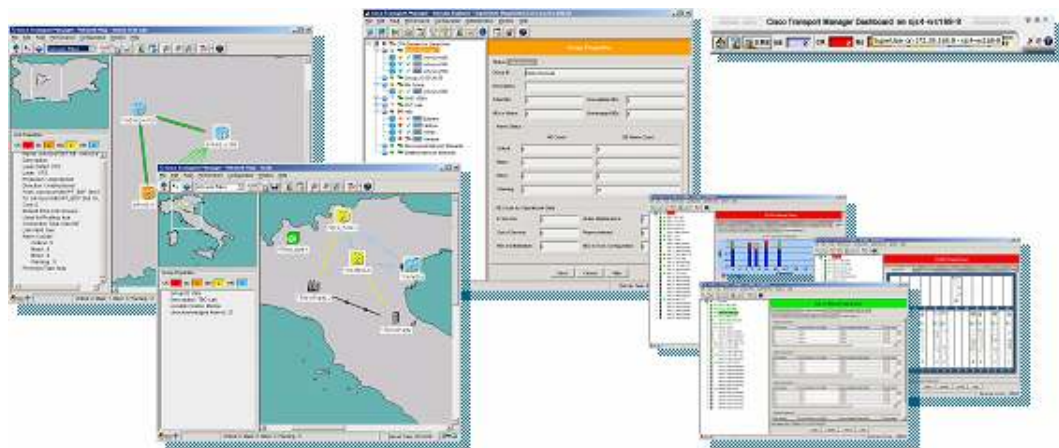
Features and Benefits

Cisco Transport Manager increases user productivity through a powerful GUI-based management system that makes complex provisioning tasks easy to perform. The Cisco Transport Manager northbound interfaces accelerate integration into the OSS customer environment.

GUI-Based Management For Unparalleled Productivity

Cisco Transport Manager is a powerful GUI-based management system that makes advanced management capabilities such as A-to-Z circuit provisioning easy to learn and use. Its explorer-style navigation and extensive use of wizards, tool tips, legends, and online help allow operators to perform tasks quickly and efficiently. Many otherwise tedious, time-consuming, and error-prone tasks can be fully streamlined using these intuitive tools lowering the cost of network operation (Figure 1).

Figure 1. The Cisco Transport Manager GUI-Based Management System



High Availability for Carrier-Class Management

CTM is a complete and rich carrier grade EMS, adding value above and beyond the basic manageability features offered by CTC. One of the key advanced features sets in CTM is the support of high availability configurations. HA has become a must have attribute of any EMS charged with running today's complex networks. High availability deployment configurations are available to provide local and geographic redundancy options. Cisco Transport Manager can cope with heavy load scenarios such as high circuit-transaction rates, performance monitoring data collection, alarm storms, and numerous simultaneous clients (up to 100). Cisco Transport Manager plays a crucial role in the high availability of the network itself. Cisco Transport Manager's fault management and performance management capabilities help to ensure that network problems are discovered quickly and accurately, so they can be addressed often before a customer's service is noticeably affected.

One-Stop Management Solution for Low Cost Of Ownership

Cisco Transport Manager supports optical network technologies, such as SONET/SDH, long haul, and metro DWDM. These technologies are deployed for transport and services such as DS-1/E1, DS-3/E3, 10/100 Ethernet, Gigabit Ethernet, and storage networking protocols.

By covering all the Cisco ONS Family of products along with Cisco MGX 8880 Media Gateway and voice-enabled Cisco MGX 8850 and MGX 8830 Multiservice Switches, Cisco Transport Manager eliminates the need to deploy multiple technology-specific EMSs, reducing capital and operating expenses.

Cisco Transport Manager can manage both ANSI and ETSI network elements, which is ideal for service providers or large enterprises with an international service area.

Cisco Transport Manager is cost-effective, using industry-standard platforms such as Sun Solaris, Oracle, and Microsoft Windows to fit smoothly into the IT environment of most companies. Its easy installation, smooth administration, and simple user interface also help decrease cost of ownership. Using scalable Sun server platforms, it is possible to minimize up-front investment but still grow the network by gradually adding processors, memory, and disk space.

Northbound Interfaces for Operations Automation

Industry-standard Simple Network Management Protocol (SNMP) and Common Object Request Broker Architecture (CORBA) protocols make Cisco Transport Manager a flexible building block in traditional as well as next-generation OSS infrastructures. Cisco Transport Manager not only captures and stores all relevant information from the optical transport domain, it also makes that information and its management available to higher-layer OSSs using open communications protocols. For example, the TeleManagement Forum–compliant (TMF 814 v3.0) CORBA northbound interface of Cisco Transport Manager facilitates the implementation of the next generation of inventory management, provisioning, flow-through circuit management, and service assurance.

Product Specification

Table 1 lists the product specifications for Cisco Transport Manager Release 9.0.

Table 1. Product Specification

Product Specification	Details
User interface	<ul style="list-style-type: none"> • Rich point-and-click, intuitive user interface • Domain explorer for logical organization of network elements and subnetwork explorer for hierarchical organization of network elements • Easy navigation from network to shelf, cards, port • Network maps for topology display with zooming capabilities • Alarm browser and alarm log • Control panel for managing server properties and default settings • Client inactivity timers for automatic screen lock and automatic logout • Powerful step-by-step provisioning wizards
Configuration management	<ul style="list-style-type: none"> • Native equipment and facility provisioning • A-to-Z circuit provisioning • Layer 2 provisioning using quality of service (QoS) templates • Network element explorer for detailed configuration of network elements • Topology and multilayer link management • Broadcast software download and software activation • Automatic network element memory backup, on-demand restoration • Networkwide operations performed in bulk fashion (for example, alarm severities and default profiles assignment) • IPv6 and SNMPv3 support
Fault management	<ul style="list-style-type: none"> • Real-time visual and audible alarm (optional continuous alarm) and event management • Current and historical alarms • Alarm-aware displays, alarm browser and log, network maps, network element explorers, domain explorer, subnetwork explorer, and summary dashboard • Enable and disable unacknowledged alarm capability
Performance management	<ul style="list-style-type: none"> • Configurable automatic collection of near-end and far-end 5-minutes, 10-minutes, 15-minutes to 1-day performance-monitoring data • Query wizard for performance-monitoring reports • Robust performance monitoring collection option to recover performance-monitoring data missed during communication downtime • Real-time display with 10-second polling • Graph of performance-monitoring data

Security management	<ul style="list-style-type: none"> • Centralized management of network element user accounts • Upload, storage, and viewing of network element audit logs • Comprehensive Cisco Transport Manager audit log tracks all user actions • Enforced password complexity, password aging • Custom profiles for access control of different user groups • Basic external authentication based on SiteMinder policy server, a third-party application from Computer Associates International, Inc. • External authentication based on RADIUS/SiteMinder server
Administration	<ul style="list-style-type: none"> • Modular Installation (optical, MGX voice gateways, or both) • Hot database backup initiated through the graphical interface • Extended and granular logging capabilities to facilitate troubleshooting of the system
Northbound interfaces	<ul style="list-style-type: none"> • Gateway/CORBA • Gateway/TL1 • Gateway/SNMP
Network elements support	<p>Network element releases supported:</p> <ul style="list-style-type: none"> • Cisco ONS 15216 100-GHz Optical Add/Drop Multiplexer (OADM) Releases 2.2.2, 2.2.3 • Cisco ONS 15216 100-GHz DWDM Red/Blue filters • Cisco ONS 15216 Erbium-Doped Fiber Amplifier 2 (EDFA2) Releases 2.3, 2.4 • Cisco ONS 15216 EDFA3 Release 1.1 • Cisco ONS 15216 200-GHz OADM, EDFA1, DWDM filters, Optical Supervisory Channel (OSC), and Dispersion Compensation Unit (DCU) • Cisco ONS 15216 FlexLayer • Cisco ONS 15302 Multiservice Customer Access Platform Releases 2.0.2 • Cisco ONS 15305 Multiservice Customer Access Platform Releases 2.0.3, 3.0.5, 3.0.6 • Cisco ONS 15310-CL SONET Multiservice Platform 5.0.8, 6.0.1, 6.0.3, 6.2, 6.2.2, 7.0, 7.0.2, 7.0.4, 7.0.5, 7.2, 7.2.2, 7.2.3, 8.0, 8.5, 8.5.1, 9.0 • Cisco ONS 15310-MA SONET Multiservice Platform Releases 7.0, 7.0.2, 7.0.4, 7.0.5, 7.2, 7.2.2, 7.2.3, 8.0, 8.5, 8.5.1, 8.5.3, 9.0 • Cisco ONS 15310-MA SDH Multiservice Platform Release 9.0 • Cisco ONS 15327 SONET Multiservice Platform Releases 4.1.4, 4.1.82, 4.6.6, 5.0.4, 5.0.8, 6.0.1, 6.0.3, 6.2, 6.2.2, 7.0, 7.0.2, 7.0.4, 7.2, 7.2.2, 7.2.3 • Cisco ONS 15454 SONET Multiservice Platform Releases, 4.1.4, 4.1.6, 4.1.82, 4.6.2, 5.0.2, 5.0.6, 5.0.8, 6.0, 6.0.1, 6.0.3, 6.2, 6.2.2, 7.0, 7.0.1 (MSTP only), 7.0.2, 7.0.3 (MSTP only), 7.0.4, 7.0.5, 7.0.6 (MSTP only), 7.0.7, 7.2, 7.2.2, 7.2.3, 8.0, 8.0.2, 8.5, 8.5.3, 9.0 • Cisco ONS 15454 SDH Multiservice Platform Releases 4.6.2, 5.0.2, 5.0.6, 6.0, 6.0.1, 6.0.3, 6.2, 6.2.2, 7.0, 7.0.1 (MSTP only), 7.0.2, 7.0.4, 7.0.5, 7.0.7, 7.2, 7.2.2, 7.2.3, 8.0, 8.0.2, 8.5, 8.5.1, 8.5.2, 8.5.3, 9.0 • Cisco ONS 15501 DC Release 4.1 • Cisco ONS 15501 AC Release 4.1 • Cisco IOS® Software Releases 12.2(29)SV3 and 12.2(30)S for the Cisco ONS 15530 • Cisco IOS Software Releases 12.2(29)SV3 and 12.2(30)S for the Cisco ONS 15540 Extended Services Platform (EXP) • Cisco IOS Software Releases 12.2(29)SV3 and 12.2(30)S for the Cisco ONS 15540 ESPx • Cisco ONS 15600 SONET Multiservice Switching Platform (MSSP) Releases 5.0.8, 6.0.1, 6.2.4, 7.0, 7.0.4, 7.2, 7.2.2, 7.2.3, 8.0 • Cisco ONS 15600 SDH MSSP Release 1.4, 8.0, 9.0 • Cisco ONS 15800 DWDM ANSI Platform Release 2.1 • Cisco ONS 15801 DWDM ETSI Platform Release 2.1 • Cisco ONS 15808 DWDM Platform Release 2.2 • Cisco MDS 9000 Series • Cisco MGX 8880 Media Gateway Releases 5.3.30, 5.4.20, 5.5.00 • Voice-enabled Cisco MGX 8850 Multiservice Switch Releases 5.3.30, 5.4.20, 5.5.00 • Voice-enabled Cisco MGX 8830 Multiservice Switch Releases 5.3.30, 5.4.20, 5.5.00 • Cisco VISM-PR Releases 3.3.25, 3.3.30, 3.3.35 • Cisco VXSM Releases 5.3.30, 5.4.20, 5.5.00

Reliability and availability	High availability options: <ul style="list-style-type: none"> • Local • Geographically diverse High availability solution is based on Symantec VERITAS to be licensed separately.
Platform	<ul style="list-style-type: none"> • Sun SPARC/T2 Solaris 10 server (for example, SUN T5220: http://www.sun.com/servers/netra/t5220/) • Oracle 10g database (not included in Cisco Transport Manager license) • Client running on Windows 2000, Windows XP, Windows Vista, and Solaris 10

How to Order

To place an order, visit the Cisco ordering homepage. For the latest update of part numbers, please refer to the Cisco Transport Manager product bulletin under the product literature section at <http://www.cisco.com/go/ctm>.

Service and Support

Cisco offers a wide range of services programs to accelerate customer success. These innovative services programs are delivered through a unique combination of people, processes, tools, and partners, resulting in high levels of customer satisfaction. Cisco services help you to protect your network investment, optimize network operations, and prepare the network for new applications to extend network intelligence and the power of your business. For more information about Cisco services, see Cisco Technical Support Services or Cisco Advanced Services.

For More Information

For additional product information on Cisco Transport Manager, visit <http://www.cisco.com/go/ctm> or contact your local account representative.



Americas Headquarters
Cisco Systems, Inc.
San Jose, CA

Asia Pacific Headquarters
Cisco Systems (USA) Pte. Ltd.
Singapore

Europe Headquarters
Cisco Systems International BV
Amsterdam, The Netherlands

Cisco has more than 200 offices worldwide. Addresses, phone numbers, and fax numbers are listed on the Cisco Website at www.cisco.com/go/offices.

CCDE, CCENT, Cisco Eos, Cisco HealthPresence, the Cisco logo, Cisco Lumin, Cisco Nexus, Cisco StadiumVision, Cisco TelePresence, Cisco WebEx, DCE, and Welcome to the Human Network are trademarks; Changing the Way We Work, Live, Play, and Learn and Cisco Store are service marks; and Access Registrar, Aironet, AsyncOS, Bringing the Meeting To You, Catalyst, CCDA, CCDP, CCIE, CCIP, CCNA, CCNP, CCSP, CCVP, Cisco, the Cisco Certified Internetwork Expert logo, Cisco IOS, Cisco Press, Cisco Systems, Cisco Systems Capital, the Cisco Systems logo, Cisco Unity, Collaboration Without Limitation, EtherFast, EtherSwitch, Event Center, Fast Step, Follow Me Browsing, FormShare, GigaDrive, HomeLink, Internet Quotient, IOS, iPhone, iQuick Study, IronPort, the IronPort logo, LightStream, Linksys, MediaTone, MeetingPlace, MeetingPlace Chime Sound, MGX, Networkers, Networking Academy, Network Registrar, PCNow, PIX, PowerPanels, ProConnect, ScriptShare, SenderBase, SMARTnet, Spectrum Expert, StackWise, The Fastest Way to Increase Your Internet Quotient, TransPath, WebEx, and the WebEx logo are registered trademarks of Cisco Systems, Inc. and/or its affiliates in the United States and certain other countries.

All other trademarks mentioned in this document or website are the property of their respective owners. The use of the word partner does not imply a partnership relationship between Cisco and any other company. (0812R)