

Cisco Prime Performance Manager

Cisco Prime™ Performance Manager is a performance management solution that provides immediate, actionable information for today's complex carrier networks.

Product Overview

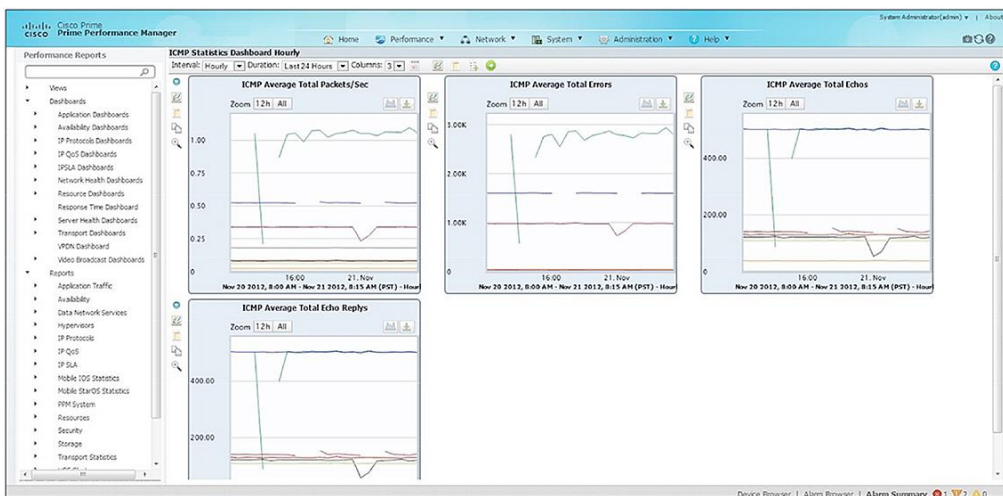
Providers know that in managing today's multidomain, multiservice networks, slow introduction of new services and poor visibility into the quality of existing services can negatively affect business agility and customer satisfaction. Reactive troubleshooting can impede real-time service-level agreements (SLAs) and prevent future service disruptions. You need information to reduce uncertainty in capacity planning and cost management and to analyze long-term trends.

Cisco Prime Performance Manager lets you rapidly identify potential performance and reliability issues and help you efficiently deliver carrier-class voice, video, mobile, cloud, and managed services. It is a highly scalable solution that gathers detailed performance statistics for Cisco® and multivendor network devices deployed across the entire network - from subscriber access all the way to the data center (Figure 1.)

Cisco Prime Performance Manager is available as a standalone product or as an integrated component of the [Cisco Prime Carrier Management](#) suite, a comprehensive, end-to-end network management solution that drastically simplifies the design, provisioning, and management of carrier-grade networks.

When combined with [Cisco Prime Network](#), Cisco Prime Performance Manager helps operators gain fine-grained visibility into network and service topologies along with related performance metrics. This is a powerful solution that offers both postevent fault management and information to proactively avoid future disruptions. Cisco Prime Performance Manager also easily integrates with [Cisco Prime Central](#) to provide centralized performance management and service assurance for the entire network.

Figure 1. Cisco Prime Performance Manager - Statistics Dashboard Example



Benefits

Easy to deploy: Minimizes deployment time through simple and easy installation with an embedded database on a single or multiple servers.

Easy to use and manage: Provides fast access to performance reports through an intuitive web-based interface with flexible drill-down options for greater detail.

Easy to extend: Facilitates the dynamic loading of new reports, extensions to existing reports, and support for reporting on new devices (including non-Cisco equipment) through field customization.

Easy to integrate: Preintegrates with the Cisco Prime Carrier Management suite and provides Simple Network Management Protocol (SNMP) trap notifications to operations support systems (OSSs).

Fast, actionable information: Provides centralized access to essential network information through easy-to-use autodiscovery and provides instant visibility into performance issues through user-defined threshold-crossing alerts (TCAs).

Features

Carrier-class scale without the cost: Manage up to 100,000 devices and approximately 9.7 million interfaces. Cisco Prime Performance Manager is designed for low startup and administrative costs with support for Cisco Unified Computing System™ (Cisco UCS®), Linux, VMware, and an embedded database that eliminates the need for third-party license and maintenance costs. A distributed architecture provides reliability, deployment flexibility, and horizontal scaling to grow with the network.

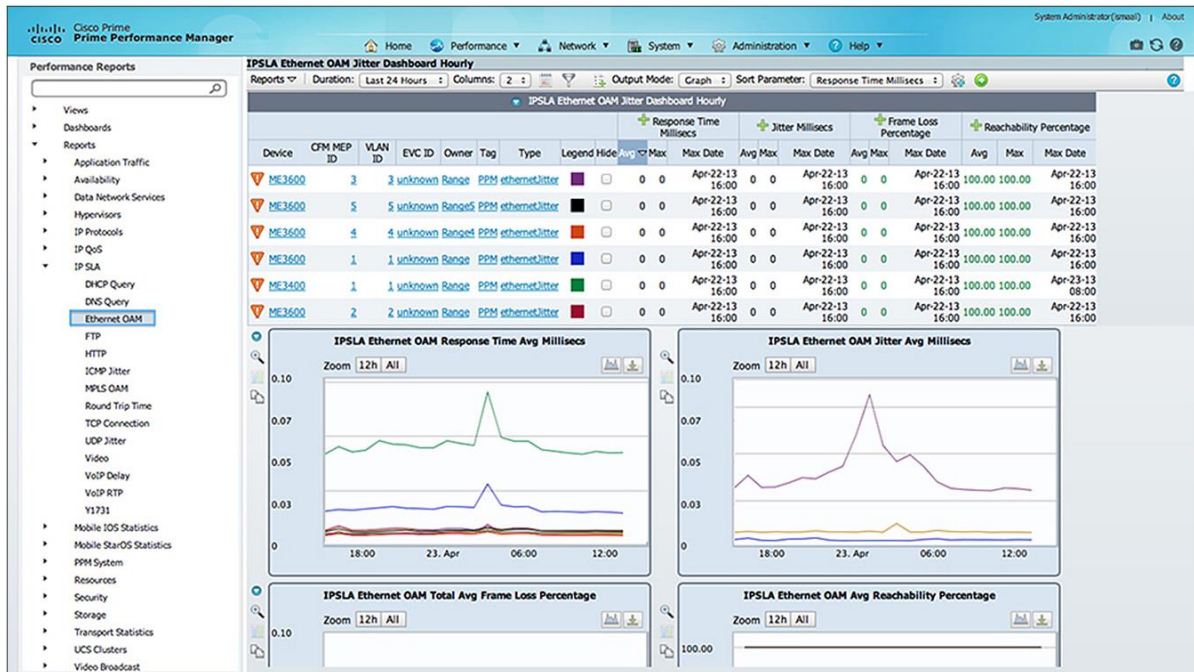
Flexible user-defined views: Better meet customer needs by quickly building and providing domain-specific views.

Prepackaged reports: Generate more than 5300 prepackaged reports on a wide range of network services, technologies, and devices. Gain more visibility into the network and service performance characteristics on devices. Reports are automatically generated without the need for complex customization or configuration, reducing the total cost of ownership (Figure 2).

Data collection and processing: Standards-based data collection can be easily applied to any Simple Network Management Protocol (SNMP)-enabled device. Generate 1 minute, 5 minute, 15 minute, hourly, daily, weekly, and monthly summarized reports, available in an easy-to-use web interface and as a comma-separated value (CSV) data file that can be exported for integration with third-party OSSs.

Multitechnology support: With extensive support for a wide variety of network services, technologies, and devices, Cisco Prime Performance Manager facilitates proactive service assurance and detection of network congestion.

Figure 2. Cisco Prime Performance Manager - Prepackaged Reports Example



Detailed Features and Benefits

Table 1 provides details on the features and benefits of Cisco Prime Performance Manager.

Table 1. Cisco Prime Performance Manager Features and Benefits

Feature	Description	Benefit
Architecture		
Autodiscovery	Supports automatic discovery of devices based on given IP address range, seed device, or subnets.	Easy to deploy - minimizes the rollout period of the application by using autodiscovery and device-to-unit-server autoassignment.
Carrier-class scale	Supports up to 100,000 devices with close to 9.7 million interfaces and 100 UI clients. Supports distributed installation for horizontal scaling.	Easy to deploy - minimizes the need to have multiple installations and reduces the cost of deployment and management complexity. Offers investment protection and allows the management applications that Cisco Prime Performance Manager supports to scale in line with server workload and traffic growth.
High Availability (HA)	Supports failover for unit servers on a 1:1 or N:1 basis, where N is the number of primary unit servers. Supports both local and geographical HA on gateways with clustering.	Helps enable continuous business operations through comprehensive failover support. Provides the capability for continuous operations with no stoppage through redundancy.
IPv6 support	Performs device monitoring on an IPv6 network.	Simplifies operations by supporting both IPv4 and IPv6 networks.
Linux with VMware, Cisco Unified Computing System, embedded database	Provides best-in-class technology choices and lower-cost platforms.	Lowers total cost of ownership by increasing deployment flexibility and supporting virtualized environments.
Report View Customization		
Extensions and report customizations	Allows users to easily perform the following tasks: <ul style="list-style-type: none"> Load new management information bases (MIBs). Customize existing reports and add new reports. Dynamically load new reports without the need for system restart. Customize report display and CSV export options. 	Easy to customize - helps enable the rollout of new services or the addition of new devices to the network through field customization.

Feature	Description	Benefit
Customizable user-defined views	<p>Allow placement of graphs, tables, and reports in predefined templates.</p> <p>Control the granularity and type of data to display on graphs and tables.</p> <p>Merge one or more graphs.</p> <p>View multiple time periods for the same key performance indicator (KPI).</p>	<p>Easy to use - allows operators to focus on specific areas of the network as needed.</p> <p>Improves customer satisfaction by offering views that are specific to their domains.</p>
User Interface		
Integrated web user interface	<p>Supports administrative and report viewing functions with online help included.</p>	<p>Easy to deploy - eliminates the need to install client applications on multiple client machines and the need to manage client upgrades.</p> <p>Easy to use - provides interface with instant access to online documentation, training videos on demand (VoDs), and software download links.</p>
Report viewing user interface	<p>Provides highly flexible report viewing options:</p> <ul style="list-style-type: none"> • CSV, table, graph-based views. • Network-level summary views for each report. • Very flexible navigation options from device to corresponding dashboard views, interface views; reports into different time granularity, and so on. • View of predefined reports or generation of custom reports. • Star graphs per device. 	<p>Fast, actionable information - provides visibility to network and traffic behavior at various granularities leading to actionable results toward network optimization and service assurance.</p>
Administrative user interface	<p>Provides a centralized administrative UI for the following functions:</p> <ul style="list-style-type: none"> • Management of gateways and unit servers. • Assignment of devices to unit servers. • Autodiscovery administration. • Flexible policies for autoassignment of device to unit server assignment such as IP address range, subnet, and so on. • User management. • Device administrative operations. • Centralized alarm viewer and context-based alarm viewers. • Report administrative options. • Visibility into various logs. • Default summarized views for aggregate views of the system. 	<p>Reduces cost of operations through consolidated administration console and easy-to-use controls.</p>
System Administration		
Grouping and aggregate reporting	<p>Provides logical grouping of interfaces, devices, and other KPIs.</p> <p>Creates groups with Group Editor.</p> <p>Predefines extensible markup language (XML) aggregation definitions for commonly requested reports (including interface and VPN).</p>	<p>Easy to use - allows operators to view consolidated performance reports pertaining to a KPI category.</p> <p>Simplifies operations by automatically providing commonly used reports.</p>
Custom report builder through Web Report Editor	<p>Web Report Editor provides a GUI interface that facilitates viewing, editing existing web reports and creating the new XML version/format of any custom web reports. Rather than writing XML code, the user can use the GUI to compose the XML document and display a preview as the document is composed. The user steps through the wizard, working with options that are context specific.</p>	<p>Simplifies operations through an intuitive interface.</p>
Automatic generation and emailing of reports	<p>Graphs, reports, dashboards, or customized views are automatically generated, so a user can email any of these to a group at a scheduled time. They can be set to be recurring.</p>	<p>Simplifies operations through automation.</p>

Feature	Description	Benefit
Network Administration		
Data collection	<p>Supports the following data collection methods:</p> <ul style="list-style-type: none"> • SNMPv1-, SNMPv2C-, and SNMPv3-based data collection. • Java Management Extensions (JMX) • NetFlow • Collectd • Ganglia • HTTP-based collection • ASR 5000 bulkstat collection • Cisco IOS® Software data collection manager (DCM) • Hypervisor integration: VMware, Xen, kernel-based virtual machine (KVM), and Hyper-V • OpenStack ceilometer • Cisco remote management system (RMS) performance statistics collection for small cells 	Easy to integrate - provides standards-based data collectors that can be easily applied to other applications.
Polling	<p>Provides ability to configure polling parameters by individual device and device group.</p> <p>Displays metrics based on real-time polling (under 1 minute polling interval).</p>	<p>Easy to manage - facilitates the administration of a large number of devices.</p> <p>Provides more accurate insight into current state of the network.</p>
Data processing	<p>Supports complex calculations based on the raw data collected such as multitable joins, delta, rate, percentage, average, minimum, and maximum calculations.</p> <p>Maintains aggregate summaries of 1 minute, 5 minute, 15 minute, hourly, daily, weekly, and monthly intervals.</p>	Fast, actionable information - provides meaningful metrics such as availability and utilization.
NetFlow data	<p>NetFlow is a network protocol introduced by Cisco to effectively and easily increase visibility of the traffic types and usage between two nodes.</p>	Fast, actionable information - assists in capacity planning and optimization by collecting and identifying the top traffic utilization, capacity (bytes and packets), protocols, and services between two network nodes.
Event/Alarm Management		
Threshold-crossing alerts	<p>Thresholds are rules or policies that determine when a KPI has risen or fallen to a particular level and when an event should be forwarded to a northbound system.</p> <p>Email notifications can be launched from TCAs.</p> <p>Scripts can be automatically executed in response to alerts.</p> <p>Thresholds on subobjects, such as logical interfaces based on type of service (ToS) or a specific class map.</p>	<p>Fast, actionable information - provides instant and granular visibility into performance issues to help enable rapid resolution.</p> <p>Simplifies operations through predefined TCA alarm definitions for common scenarios.</p>
Event editor	<p>Event-related properties can be modified through the event editor.</p>	Easy to use - configures custom event properties.
Data export	<p>Predefined data export to the local file system in standards-based format (Third-Generation Partnership Project [3GPP] type A and type B).</p>	Easy to integrate - standards-based CSV format reduces expensive integration costs.
Secure User Management and Administration		
Role-based security	<p>Supports role-based security to distinguish between operator and administrative actions.</p> <p>Supports three predefined roles and two custom roles.</p>	Aligns with organizational security recommendations.
Secure protocols	<p>Support carrier class secure implementations such as secure protocols from UI to gateway; gateway to unit server; secure protocol to database.</p> <p>Support flexible deployments with firewalls at each of these communications layers.</p>	Aligns with organizational security recommendations.
External authentication	<p>Supports external authentication using Lightweight Directory Access Protocol (LDAP), RADIUS, and TACACS. Supports fallback options for local authentication in the case of external authentication server failure.</p>	Aligns with customer deployment scenarios to use external authentication systems.

Feature	Description	Benefit
OSS Integration		
Cisco Prime Central and Cisco Prime Network integration	<p>Easy-to-use GUI-driven configuration of the integration and installation of cross-launch scripts.</p> <p>Synchronizes device list, credentials, and business tags from Cisco Prime Network.</p> <p>Performance reports generated in Cisco Prime Performance Manager can be contextually cross-launched from Cisco Prime Network.</p> <p>TCAs can be forwarded to Cisco Prime Central or Cisco Prime Network.</p> <p>Role-based access control (RBAC) through Cisco Prime Central provides user management.</p>	<p>Easy to integrate - reduces the cost of systems integration by providing out-of-the-box integration.</p> <p>Easy to use - single-click configuration allows operators focus on business problems rather than systems integration.</p> <p>Increases efficiencies in performance management and service assurance through centralization.</p> <p>Provides seamless experience for viewing performance reports integrated with network and service topologies driving information for actionable results.</p>
SNMP trap notification to OSS applications	Sends internal Cisco Prime Performance Manager-generated alarms as well as TCAs as event promulgation manager (EPM) SNMP trap notifications based on configurable rules.	Easy to integrate - fault management dashboards for proactive visibility integrates into Cisco Prime Performance Manager-generated errors. (For example, upstream OSS alarms can be filtered by severity.)
Northbound APIs	Provides RESTful APIs.	Simplifies integration with third-party applications.
Report Management		
Mobility	<p>Provides mobility reports including:</p> <ul style="list-style-type: none"> • IOS • StarOS code division multiple access (CDMA) • StarOS evolved packet core (EPC) • StarOS KPIs • Serving GPRS Support Node (SGSN) • Mobility Management Entity (MME) reports 	Facilitates mobile service assurance for customers with CDMA and proxy mobile IPv6 (PMIPv6) deployments. MME and SGSN reporting capabilities serve the long-term evolution (LTE) and universal mobile telecommunications system (UMTS) customers.
Small Cell	<p>Provides the following features:</p> <ul style="list-style-type: none"> • RMS applications stat collector • StarOS - Home Node B Gateway (HNB-GW) and Home eNode B Gateway (HeNB-GW) counters and complex KPIs • Performance monitoring of licensed small cell access points through RMS upload server 3GPP files • Dynamic AP inventory association with H(e)NB-GW, cell location, cell name and cell site • Reports for 4G access points 	Simplifies operations by providing consolidated performance monitoring across small cell and mobility networks.
Cisco Quantum™ Virtualized Packet Core (QvPC)	<ul style="list-style-type: none"> • Availability report and performance monitoring of QvPC distributed instance (DI) • Direct Conversion of StarOS bulkstats CSV files To 3GPP XML files - with or without deltas 	Extends performance monitoring from physical to virtual environments in the data center.
Cable	Provides performance monitoring and management reports for cable access devices including Cisco router uBR10012-CMTS, Wideband EBC, and RFGW.	Helps provide cable service assurance.
Data center and virtualization	Generates reports for key data center components including network, compute, and storage, as well as virtualization. It also provides reports for virtual services and devices.	<p>Analyzes usage trends of compute, network, and storage infrastructure components, facilitating identification of performance issues in the data center.</p> <p>Provides a way to easily identify bottlenecks in compute and network infrastructure through capacity management reports.</p>

Cisco Prime Performance Manager supports the key Cisco platforms listed in Table 2. In addition, Cisco Prime Performance Manager can provide reports for any SNMP-enabled device on the network. Please refer to Cisco Prime Performance Manager [Compatibility Information](#) for the full list of devices that are supported.

Table 2. Examples of Cisco Platforms Supported

CRS-1	ME 3800X, ME 3600X, ME 4900	MWR 2900
ASR 9000	ASR 1000	ISR 1900, ISR 2900, ISR 3800, ISR 3900
7600	ASR 5000, ASR500	Catalyst® 4500, Catalyst 4900
Cisco UCS B Series, C Series	Cisco Nexus® Switches including Cisco Nexus 1Kv	Hypervisors - VMware, Xen, Hyper-V, KVM

Cisco Prime Performance Manager provides a rich set of prepackaged reports based on MIBs along with capabilities to extend to generate new reports and support new devices (Table 3). New MIBs can be added and new report definitions can be dynamically loaded without requiring system restart.

Table 3. Examples of Cisco Prime Performance Manager Reports

Report Category	Second-Level Category	Third-Level Category	Report Type	Standard MIB-Based or Cisco
Application Traffic				
	Authentication, authorization, and accounting (AAA)		Authentication Requests, Authentication Successes, Authentication Failures, Authorization Requests, Authorization Failures, Accounting Requests, Accounting Successes, Accounting Failures	Cisco
	SNMP		Packets, Packet Rates, Traps, Send Packet Types, Send Errors, Receive Packet Types, Packet Type Rates, Receive Variables, Receive Errors	Standard
	TCP		Segments, Segment Rate, Errors	Standard
	User Datagram Protocol (UDP)		Datagrams, Datagram Rate, Errors	Standard
Applications				
	Apache		Bytes, Connections, Idle Workers, Requests, Scoreboard	Standard
	MySQL		Commands, Handler, Locks, Threads	Standard
Availability				
	Interfaces		Interface Availability, ATM Interface Availability, EVC Interface Availability, Multiprotocol Label Switching (MPLS) Interface Availability	Standard
	MPLS tunnels		In Segment Availability, Out Segment Availability, Tunnel Availability	Standard
	Layer 2 VPNs		ATMs, EPL EVPLs, Frame Relays, TDMs, VPLS	Cisco
	Pseudowires		Global Availability, Inbound Availability, Outbound Availability	Cisco
	SNMP ping		SNMP Availability	Standard
Compute				
	ESXi		Data store, Disk, Network, Total CPU, Memory, Availability	Standard
	Hyper-V		Host, Virtual Machine	Standard
	KVM		Host, Virtual Machine	Standard
	UCS Clusters		Chassis, Fabric Interconnect	Standard
	Xen		Host, Virtual Machine	Standard
	vCenter		Data store Clusters, Data stores, Hosts and Clusters	Standard
IP Quality of Service (Quos)				
	Committed Access Rate (CAR)		Traffic Bits/Sec, Traffic Percentage of Access Rate, Traffic Percentage of Interface, Traffic Distribution Percentage, Conform Continue, Conform Dropped, Conform Precedence, Conform Traffic, Conform Transmit, Current Burst, Excess Continue, Excess Dropped, Excess Precedence, Excess Traffic, Excess Transmit	Cisco
	Class map		Pre- and Post-Policy Bytes, Pre- and Post-Policy Byte Rate, Pre- and Post-Policy Utilization, Pre-Policy Statistics, Post-Policy Statistics, Dropped Statistics, Police Statistics, Queuing Discards Statistics, Committed Info Rate Statistics, Peak Info Rate Statistics, Random Early Detection Statistics, Traffic Shaping Statistics	Cisco

Report Category	Second-Level Category	Third-Level Category	Report Type	Standard MIB-Based or Cisco
	Ethernet Flow Point		Interface CIR Utilization	Cisco
	Video Monitoring		Bit Rate, Bytes, Packet Rate, Packets, Lost Packets, Media Rate Variation, Discontinuity Count, RTP Expected Packet, Jitter, Lost Distance, Lost Duration, Lost Fraction, Lost Interval	Cisco
IP Protocols				
	Border Gateway Protocol (BGP)		Total Messages, Total Update Percentage, Peer Messages, Peer Update Percentage, Peer Flap Statistics	Standard
	Internet Control Message Protocol (ICMP)		Packets, Packet Rates, Echoes, Echo Replies, Errors, Destination Unreachable, Time Exceeds	Standard
	Open Shortest Path First (OSPF)		Messages, Message Rates, Neighbor Availability	Standard
	Intermediate System-to-Intermediate System (ISIS)		Interface, Traffic, Database, OTV Statistics	Cisco
	VRF		IntraDevice, Bit Rates, Bytes, Packets	Cisco
IP Service-Level Agreement				
	Ethernet Operations, Administration, and Management (OAM)		Jitter Performance, Response Time, One Way Delay, Reachability, Frame Loss	Cisco
	ICMP jitter		Dashboard, Performance, Src->Dest, Dest->Src, Reachability, Response Time, Packet Loss	Cisco
	UDP jitter		Dashboard, Performance, Src->Dest, Dest->Src, Reachability, Response Time, Packet Loss	Cisco
	MPLS OAM		Dashboard, Response Time, Reachability, Operation Time	Cisco
	UDP Round-Trip Time (RTT)		Dashboard, Response Time, Reachability, Traffic Throughput	Cisco
	Video		Dashboard, Operation Failure, Packet Failure, Delay, Jitter, Reachability	Cisco
	VoIP Delay/RTP		Dashboard, Response Time, Reachability, Packet Loss, Jitter	Cisco
	Y1731		Delay, Delay Backward, Delay Forward, Delay Two Way, Delay Variance Backward, Delay Variance Backward Negative, Delay Variance Backward Positive, Delay Variance Forward, Delay Variance Forward Negative, Delay Variance Forward Positive, Delay Variance Two Way, Delay Variance Two Way Negative, Delay Variance Two Way Positive, Loss Backward, Loss Forward, Reachability	
Layer 2 Protocol				
	MSTP		Interface Details, BPDU Statistics	Standard
	RSTP		Interface Details, BPDU Statistics	
	VLAN		Unicast, Multicast, Broadcast, Unknown, Routed Statistics	
Mobile IOS				
			CSG, GGSNs, PCRF, PDNGW, SGW, SLB, SPGW	Standard
Mobile StarOS				
			APN, DCCA, DPCA, IMSA, GTPP, Card, SGW, PDW, Context, GTP-C, GTP-U, Port, Radius Server, eGTP-C, FA, HA, HSGW, LAC, PPP, BCMCS, LNS, MIPv6, MVS, RP, ECS, IP Pool, Port, SAEGW, LMA, MAG, P2P, PGW, ePDG	Standard
NetFlow				
			AS, Conversations, Destination, Prefix, Interfaces, Port, Protocols, Sources, ToS, CGNAT DS-Lite, CGNAT NAT44, CGNAT NAT64 (Session, User, Session with Destination)	Standard

Report Category	Second-Level Category	Third-Level Category	Report Type	Standard MIB-Based or Cisco
Network Services				
	Load Balancing		ACE, NetScaler	Cisco
	Symmetricom		Networking, Symm Interface, Physical, Temperature, TP5000, TP5000e	Cisco
	Virtualization		Fabric Path, VDC, vPC	Standard
Resources				
	Buffers		Misses Percentage - Small/Med/Big, Percentage - Large/Huge, Utilization - Small/Med/Big, Utilization - Large/Huge, Failures Percentage	Cisco
	CPU		Utilization, Processes Utilization	Cisco
	Memory		Memory Pool Utilization	Cisco
	Swap Space		Statistics, Utilization, Bytes	Cisco
	Disk		Space Statistics, Utilization, Bytes, IO, Inodes	Cisco
Transport Statistics				
	ATM interface		Dashboard, Utilization, Availability, Bit Rates, Bytes, Byte Rates, Packets, Packet Rates, Errors, Error Percentage, Discards, Discard Percentage, Broadcast Percent, Multicast Percent, Unicast Percent	Standard
	ATM PVC		Interface Utilization, Cells, Cell Rate, Bytes, Byte Rate, Packets, Packet Rate	Cisco
	Cable		CMTS, CMTS DOCSIS3, EVC QoS, Wideband	Cisco
	EVC interface		Dashboard, Utilization, Availability, Bit Rates, Bytes, Byte Rates, Packets, Packet Rates, Errors, Error Percentage, Discards, Discard Percentage, Broadcast Percent, Multicast Percent, Unicast Percent	Standard
	Ethernet errors		Ethernet Errors	Standard
	Interface		Dashboard, Utilization, Availability, Bit Rates, Bytes, Byte Rates, Packets, Packet Rates, Errors, Error Percentage, Discards, Discard Percentage, Broadcast Percent, Multicast Percent, Unicast Percent, Extended Errors	Standard
	Layer 2 VPN		ATM, EPL EVPL, Frame Relay, TDM, VPLS	Cisco
	Layer 3 VPN		Layer 3 General VPN, Layer 3 Multicast VPN	Cisco
	MPLS		In Segment, Label Distribution Protocol (LDP), MPLS interface, Out Segment, Traffic Engineering (TE) tunnel	Standard
	Optical		Ethernet, Generic Cards, OTN, SDH, SONET, Sensor	Standard
	RMON		Dashboard, Packets Received, Size, Broadcast/Multicast Packets Received, Oversize/Undersize Packets, Fragments, Collisions, Drop Events	Cisco
	TDM Interface		DSn (DS1, DS2), En (E1, E2)	Cisco
	Pseudowire		Global Availability, Inbound Availability, Outbound Availability, Bit Rates, Bytes, Byte Rate, Packets, Packet Rate	Cisco
Video Broadcast				
	Conditional Access		DBDS Satellite Conditional Access ADP Dashboard	Cisco
	DBDS		Communication, Controller, DNCS, GQAM, QPAK	
	Satellite Signals		DBDS Satellite Signal Levels, DBDS Satellite Signal Error	
	Cisco TelePresence®		Call Management, Call Information, Call Data Monitoring, Call Transmitted, Call Received, Call Stream Type, Call Jitter, Organization, Peripheral, Region, Resource, Service Provider	

Please see the Cisco Prime Performance Manager [User Guide](#) for information on how to view and utilize reports as well as manage report policies.

System Requirements

The server and web browser system requirements for Cisco Prime Performance Manager can be found in the Cisco Prime Performance Manager [Quick Start Guide](#).

About Cisco Prime

The Cisco Prime portfolio of IT and service provider management offerings empowers organizations to more effectively manage their networks and the services they deliver. Built on a service-centered foundation, Cisco Prime supports integrated lifecycle management through an intuitive workflow-oriented user experience - providing A-to-Z management for evolved programmable networks (EPNs), mobility, video, cloud, and managed services.

Service and Support

Cisco offers a wide range of services programs to accelerate customer success. These innovative services programs are delivered through a unique combination of people, processes, tools, and partners, resulting in high levels of customer satisfaction. Cisco services help you to protect your network investment, optimize network operations, and prepare the network for new applications to extend network intelligence and the power of your business. For more information about Cisco services, please visit the [Cisco Services](#) page on Cisco.com.

Ordering Information

Cisco Prime Performance Manager is available for purchase through regular Cisco sales and distribution channels worldwide. See Table 4 for part numbers. To place an order, visit the [Cisco Ordering Homepage](#). Cisco Prime Performance Manager supports right-to-manage (RTM) license model per device. For a complete list of devices available, please contact the sales representative.

Table 4. Ordering Information for the Latest Release of Cisco Prime Performance Manager

Part Number	Description
R-PRIME1XPERFMGRK9	Cisco Prime Performance Manager 1.x (DCT Top Level Ordering Use)
PRIME1XPERFMGRK9	Cisco Prime Performance Manager 1.x (DCT Top Level Ordering Use Only - eDelivery)
PERFMGR-1.6-K9	Cisco Prime Performance Manager 1.6 Base Application
PERFMGR-1X-SBY	Cisco Prime Performance Manager 1.x Standby Application (Redundancy)
PERFMGR-1.6-LAB-K9	Cisco Prime Performance Manager 1.6 Laboratory License (Not for Production Use)
<DEVICE>-PERF1RTM	Cisco Prime Performance Manager 1 - <Device> - Right to Manage

For More Information

For more information about Cisco Prime Performance Manager, contact your local account representative or visit the Cisco Prime Performance Manager Overview at <http://www.cisco.com/go/performance>.

Download a no-cost, 60-day evaluation version of Cisco Prime Performance Manager from the Cisco Promotional Software Store at <http://www.cisco.com/go/nmsevals>.



Americas Headquarters
Cisco Systems, Inc.
San Jose, CA

Asia Pacific Headquarters
Cisco Systems (USA) Pte. Ltd.
Singapore

Europe Headquarters
Cisco Systems International BV Amsterdam,
The Netherlands

Cisco has more than 200 offices worldwide. Addresses, phone numbers, and fax numbers are listed on the Cisco Website at www.cisco.com/go/offices.

Cisco and the Cisco logo are trademarks or registered trademarks of Cisco and/or its affiliates in the U.S. and other countries. To view a list of Cisco trademarks, go to this URL: www.cisco.com/go/trademarks. Third party trademarks mentioned are the property of their respective owners. The use of the word partner does not imply a partnership relationship between Cisco and any other company. (1110R)