

# Delivering on the promise of the Secure Campus & Unified Branch for the AI Era



Peter Jerhamre

Solutions Engineer

# Today's IT environments are more complex, noisy, and fragmented than ever



70%

of IT pros say alert fatigue is a top challenge



85%

of IT outages caused by human error are procedure or process related



112

SaaS apps are used by the average enterprise, operating across the 2.2 public clouds



15+

hours of average mean time to resolution for critical incidents. MTTR is still too high

# AI is bringing changes and challenges

**1,000s**

AI Agents per  
enterprise expected

**#1 risk**

AI-enhanced  
malicious attacks

**64%**

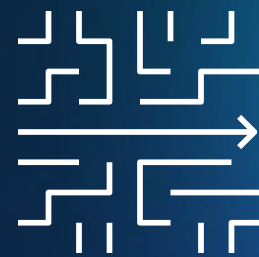
of orgs face IT skills  
shortage by 2026

# Is your Campus Network AI ready?

For explosive traffic, for increased security risks, for more complexity



Operational simplicity  
powered by AI



# Unifying Catalyst & Meraki

## Catalyst

**Catalyst Center**

**Catalyst License**

**Catalyst Hardware**

MANAGEMENT

LICENSE

CISCO HARDWARE

## Meraki

**Meraki Dashboard**

**Meraki License**

**Meraki Hardware**

# Our unified platform

## PLATFORM

Management

Assurance

API / Integrations

Intelligence

## HARDWARE



Smart  
Switches



Secure  
Routers



Wireless

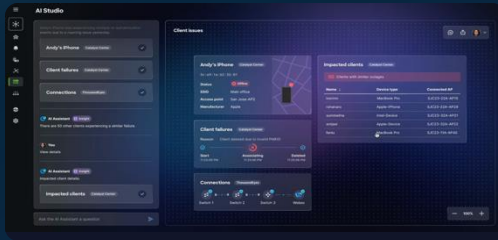


Industrial  
IoT

# AgenticOps

## The New Standard for IT Operations

Coming in 2026



AI Canvas

Cross-domain collaborative troubleshooting

Available Now



cisco  
AI Assistant

AI Assistant

Accelerate network operations

POWERED BY DEEP NETWORK MODEL

Cut MTTR to near seconds  
with AI-driven root cause  
and resolution.

Catch critical issues  
**early with AI that sees  
across the stack.**

Operate at scale with  
lean teams and built-in  
AI expertise.

Troubleshoot faster  
together with shared  
context across teams.





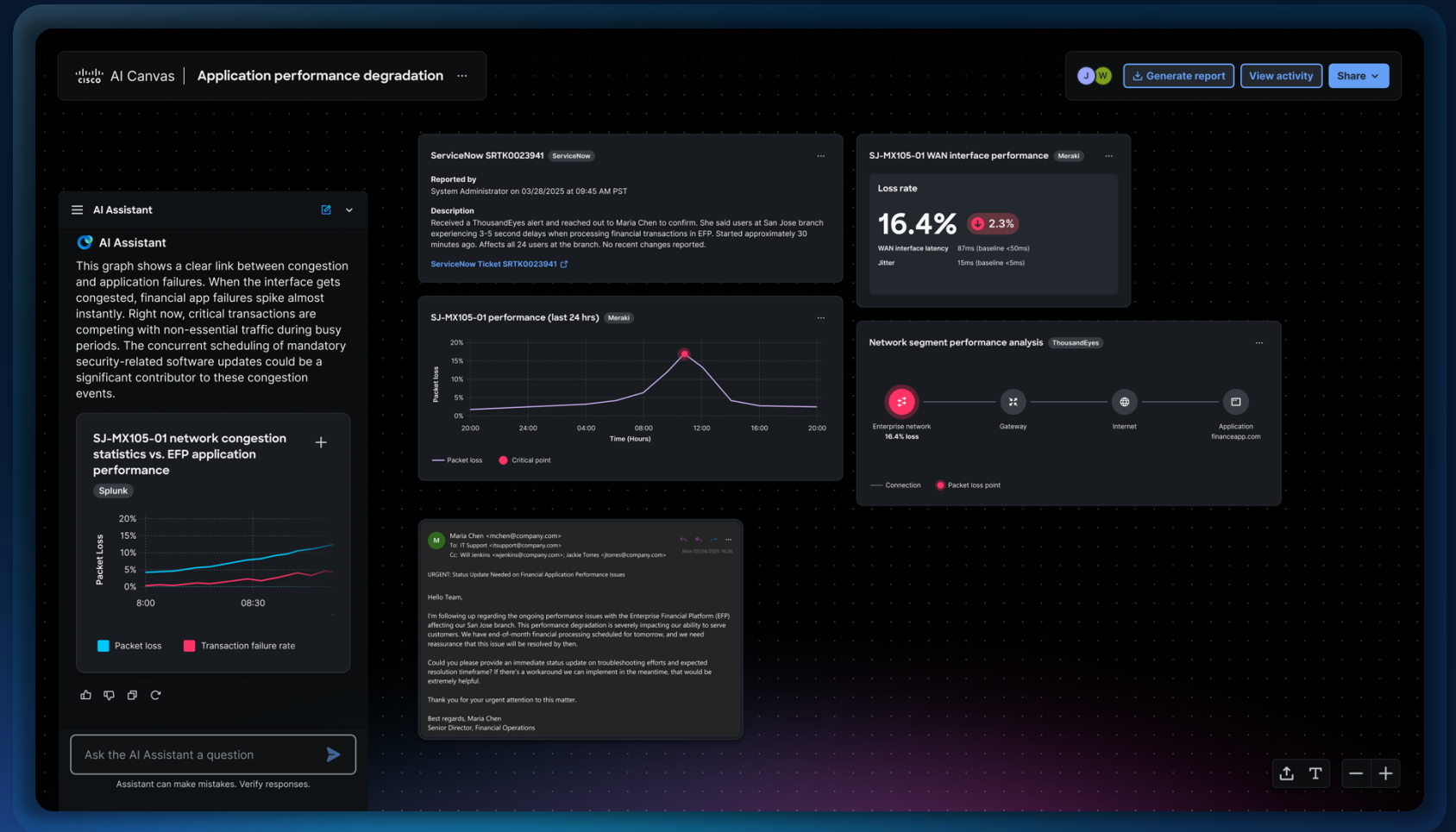
Coming in 2026

# AI Canvas

Troubleshooting and execution across multiple domains

Collaboration across multiple users (NetOps, SecOps and execs)

Built on the foundation of the Deep Network Model

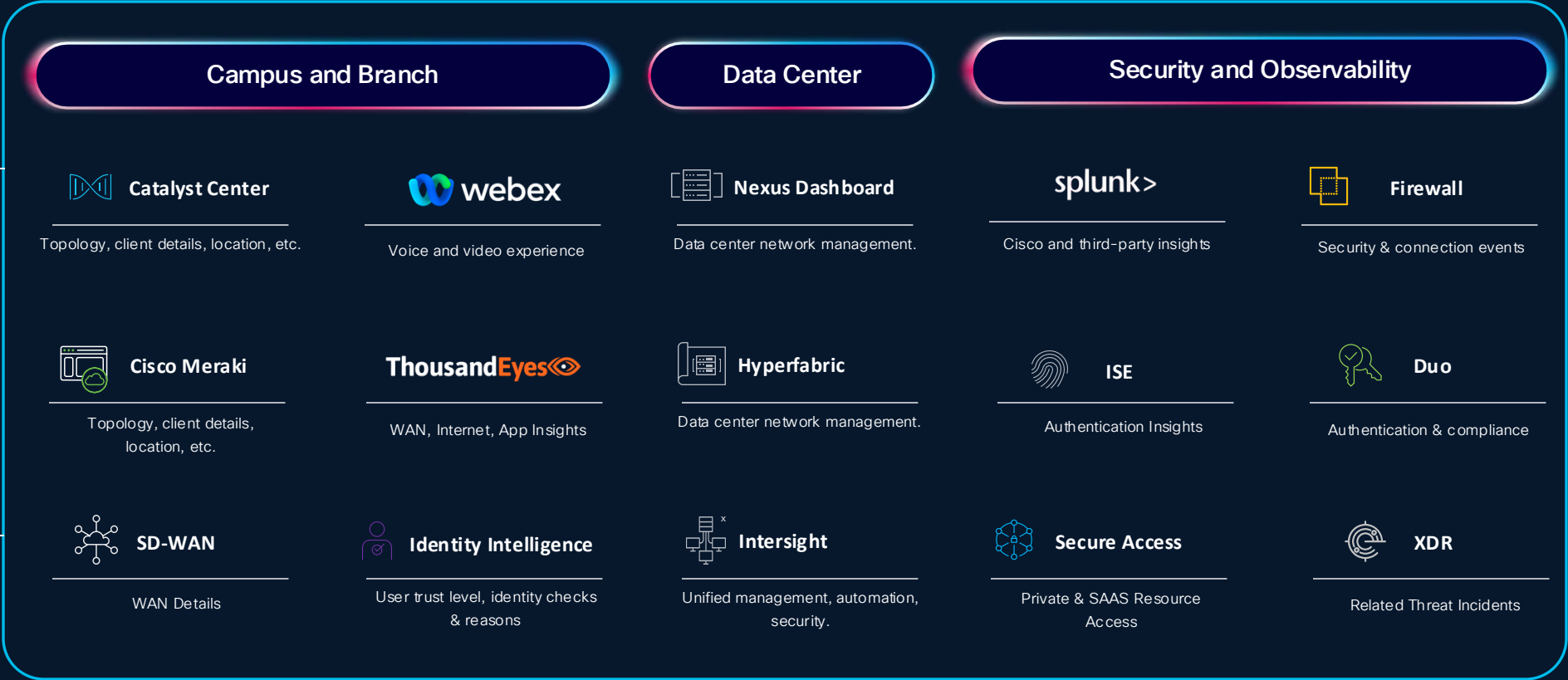
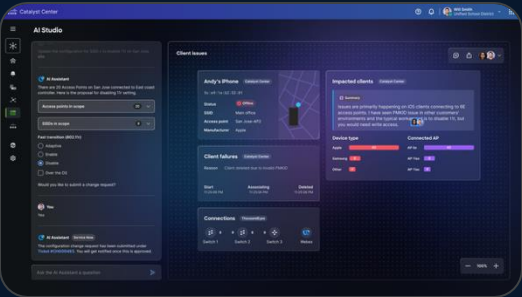


# Agentic Ops Across IT and SecOps

AI Assistant



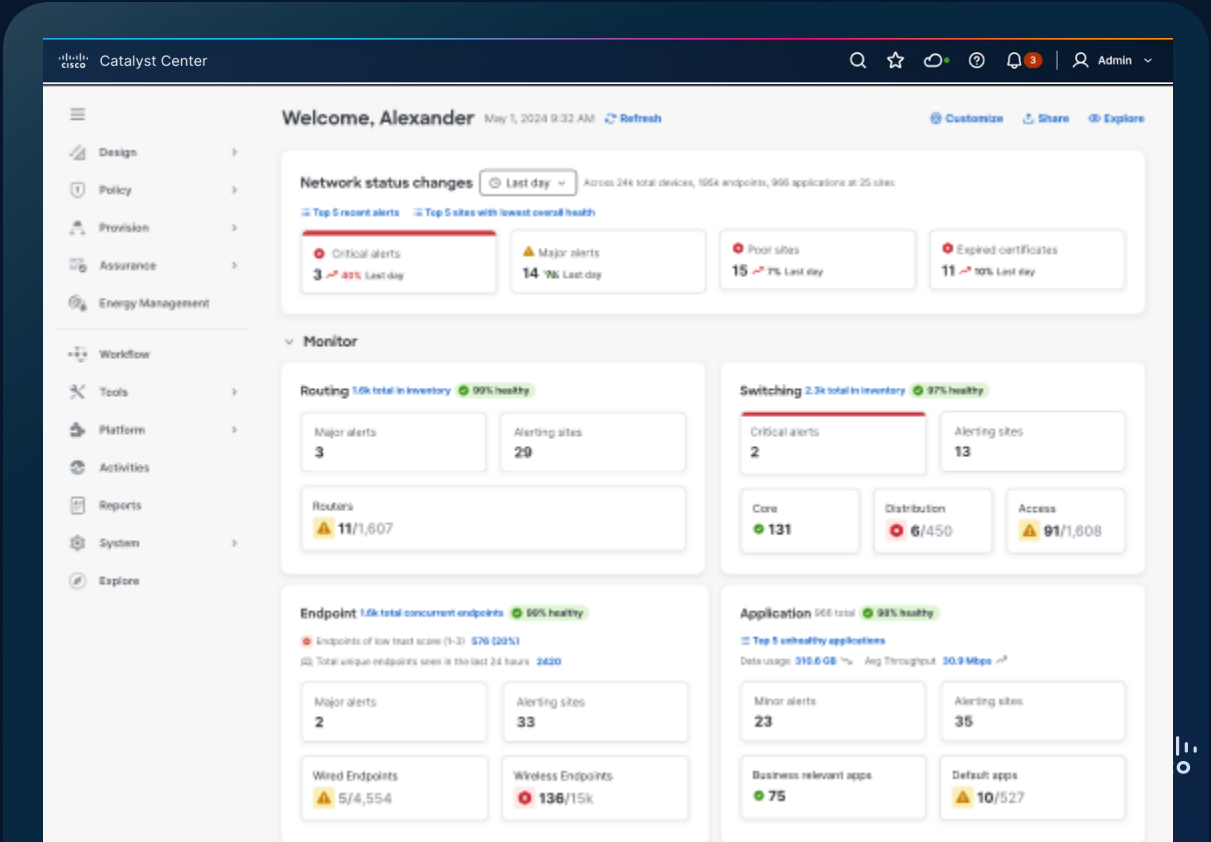
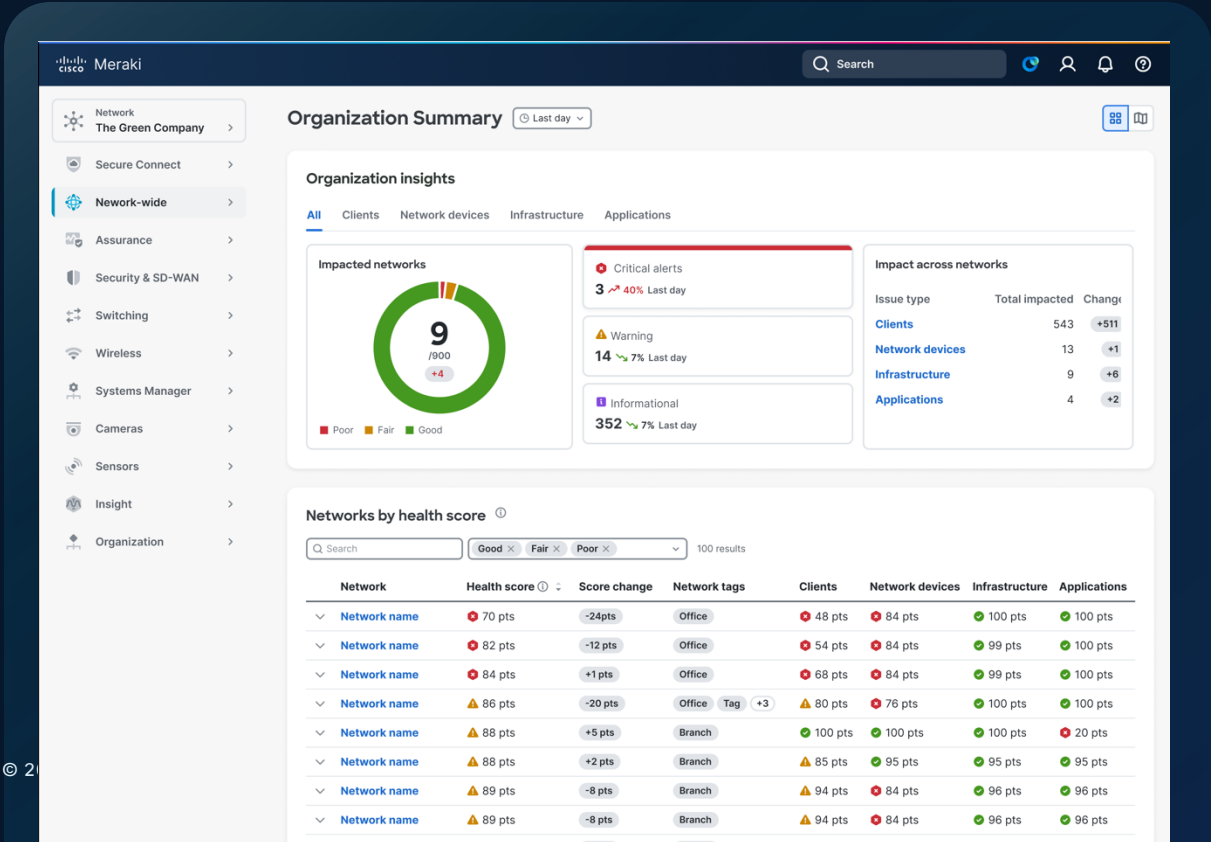
AI Canvas



# Common experience

AVAILABLE NOW

Bringing together the power of **Catalyst** and simplicity of **Meraki**



AVAILABLE | NOW

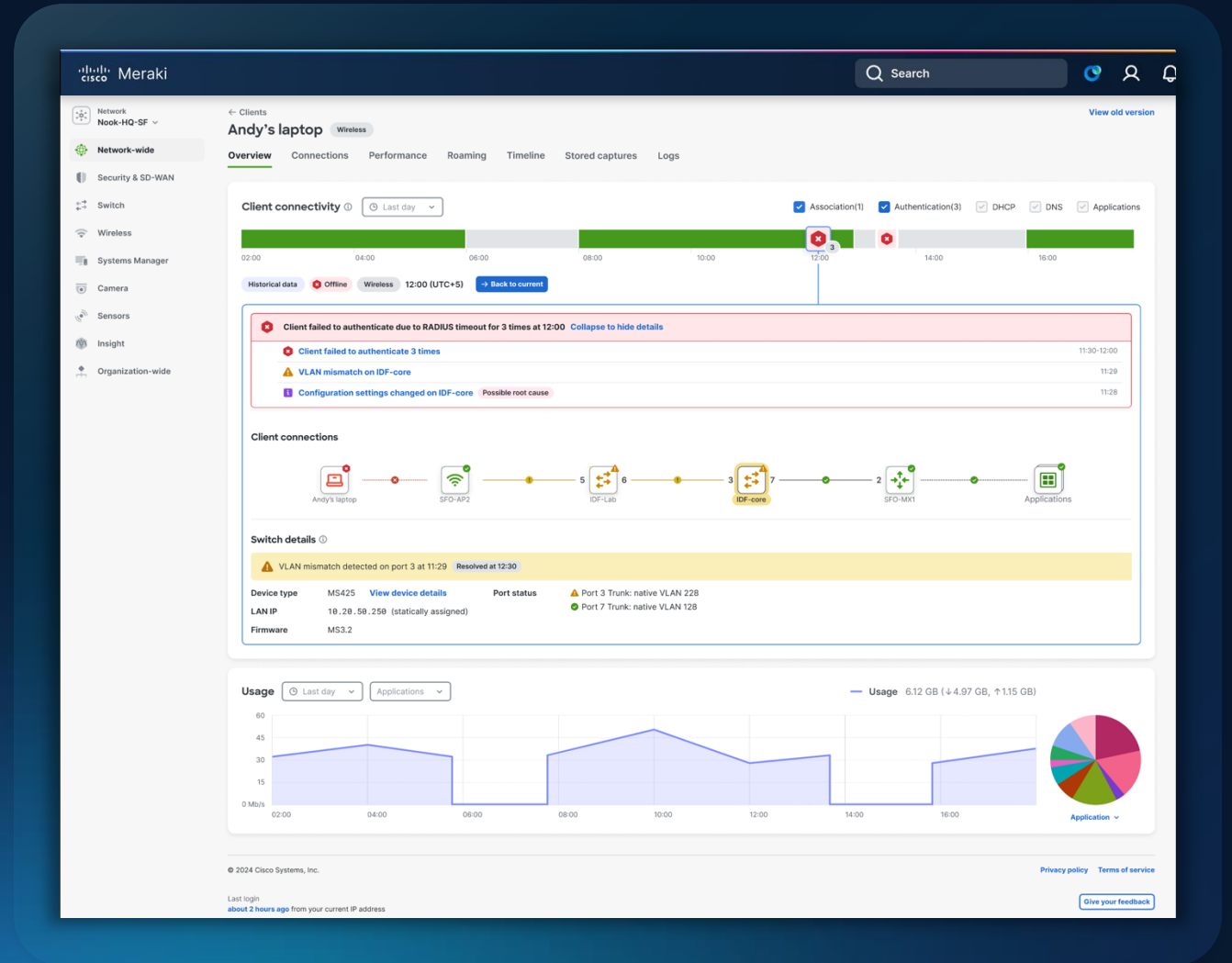
# Assurance across every digital experience

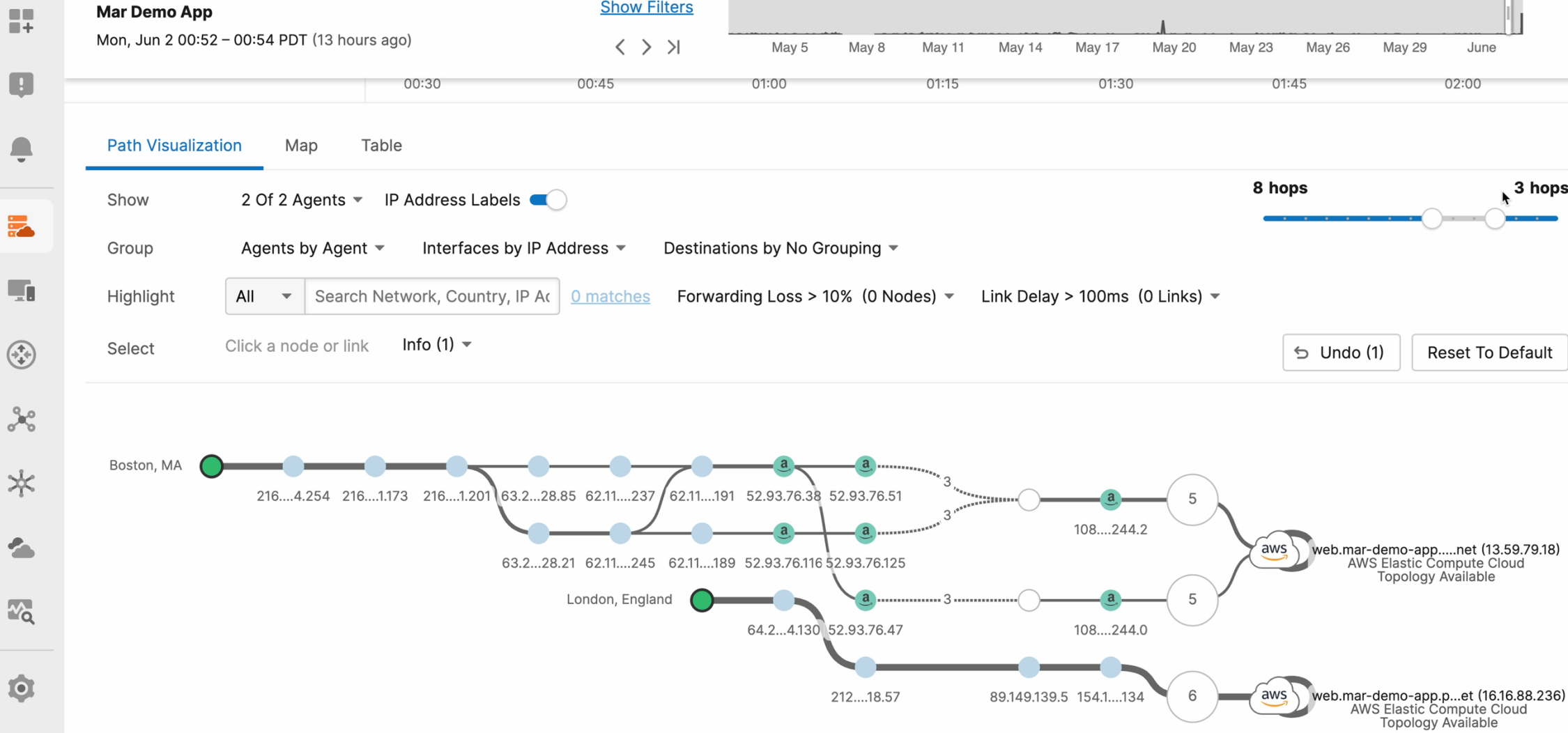
Deep visibility across both owned and unowned networks

AI-powered insights surface experience-impacting issues instantly

Closed-loop workflows trigger automated remediation

AI Assistant accelerates root cause analysis end-to-end





# Unified network management

Cisco networking platform

Coming Soon

Unified network management with flexible deployments for cloud, on-prem, and hybrid in a single cloud dashboard experience integrating Meraki and Catalyst Center

Unified management experience

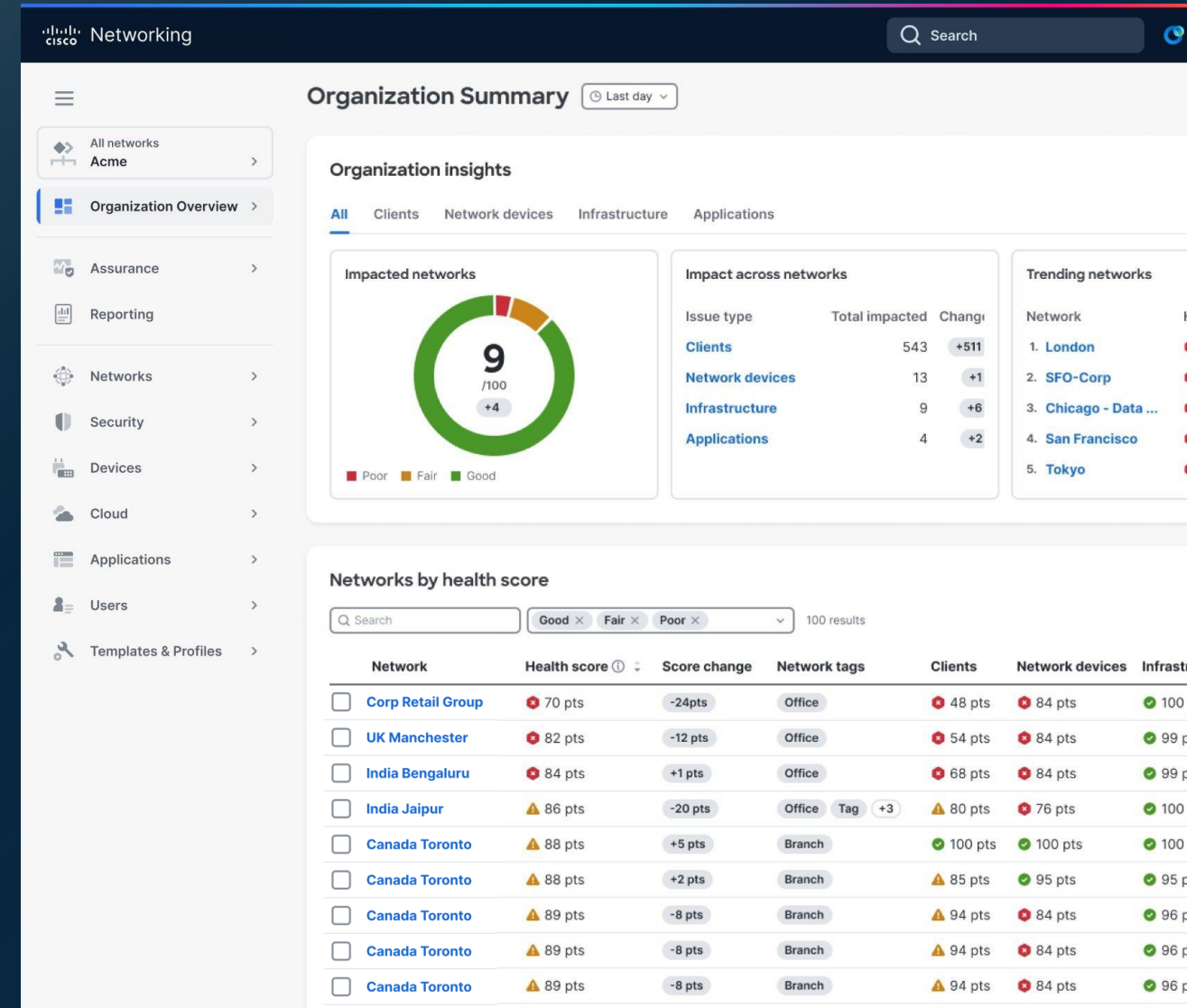
Global health visibility and actionable alerts

Secure SSO for seamless workflows

Simplified AI-powered network operations across cloud and on-prem environments

Enterprise campus capabilities and scale

AI-powered automation and assurance

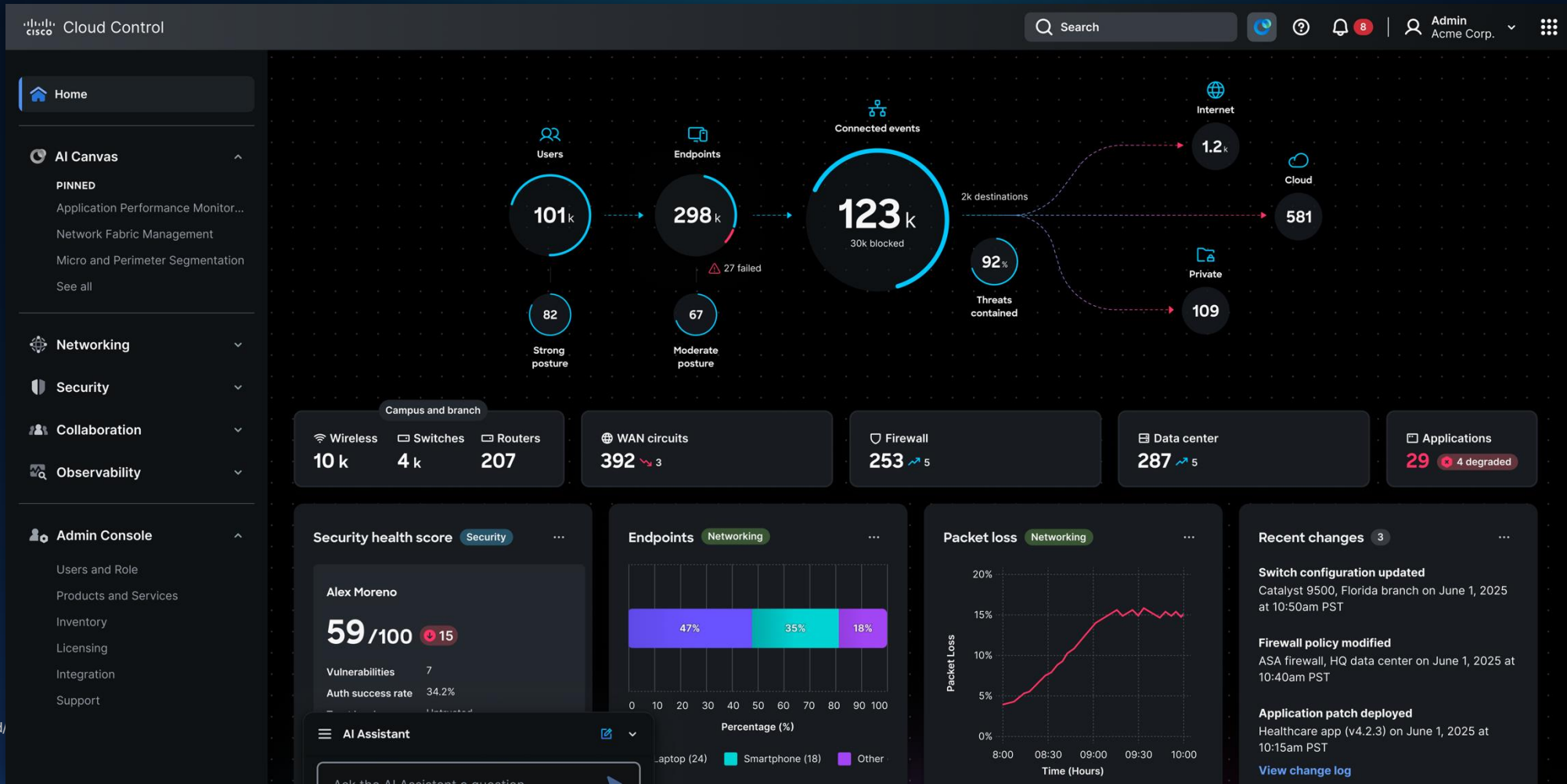




# Cisco Cloud Control

An AI-native management platform that reimagines how organizations **manage, operate, and optimize** their IT infrastructure

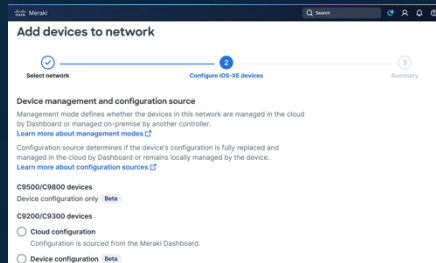
Coming in 2026





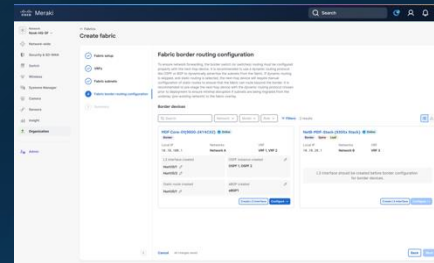
# Large campus cloud capabilities

## Powerful Switching Capabilities



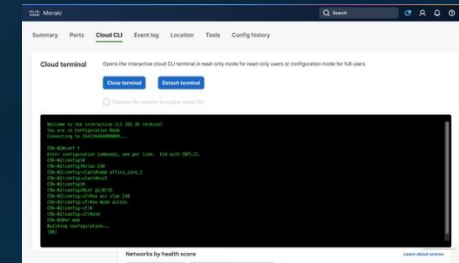
Support campus deployments with BGP, VRF, ISSU, and IOS XE stacking

## Fabric for Secure Networking



Simplify NetOps with a secure fabric and micro/macro-segmentation

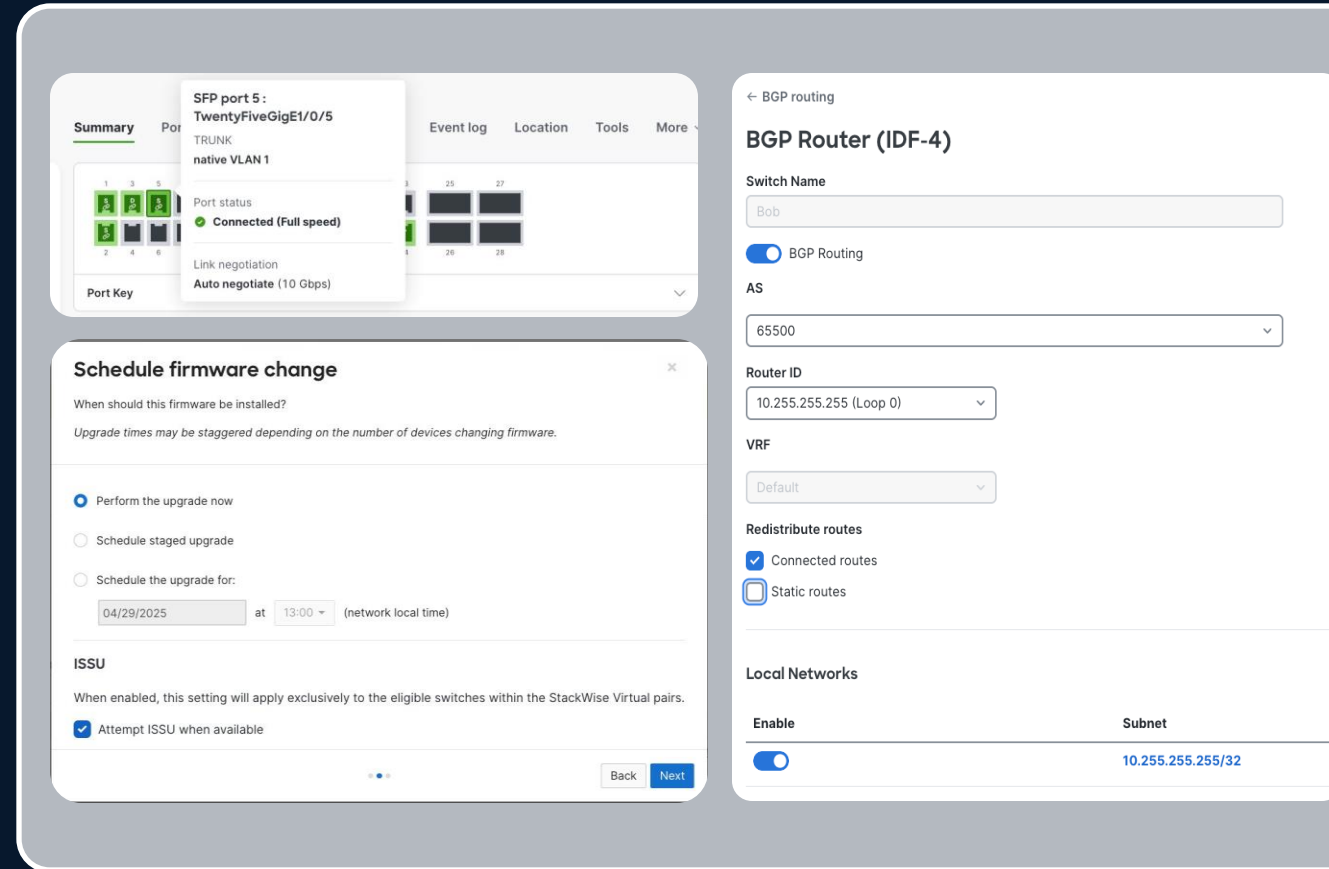
## Cloud CLI for Flexibility



Simplify onboarding and flexibility with operating mode options and Cloud CLI

# Simplicity, with new Enterprise capabilities and scale

- **Advanced routing** configurations with BGP, VRF support, and Routed Ports
- **High availability** with In-Service Software Upgrade (ISSU), StackWise Virtual, and Rapid Per-VLAN STP+
- **Cloud intelligence**: SmartPorts (Profiles), Intelligent Capture (scheduling), Device Uptime, Device Health, and Digital Optical Monitoring
- **Expand new platforms** support: MS390, C9200/CX/L, C9300/LM/L/X, C9500\*



# Cloud-Managed Fabric Solution



**Simplified** management as a **single logical entity**



Focused on **brownfield migration**



**Flexible** deployment and staging



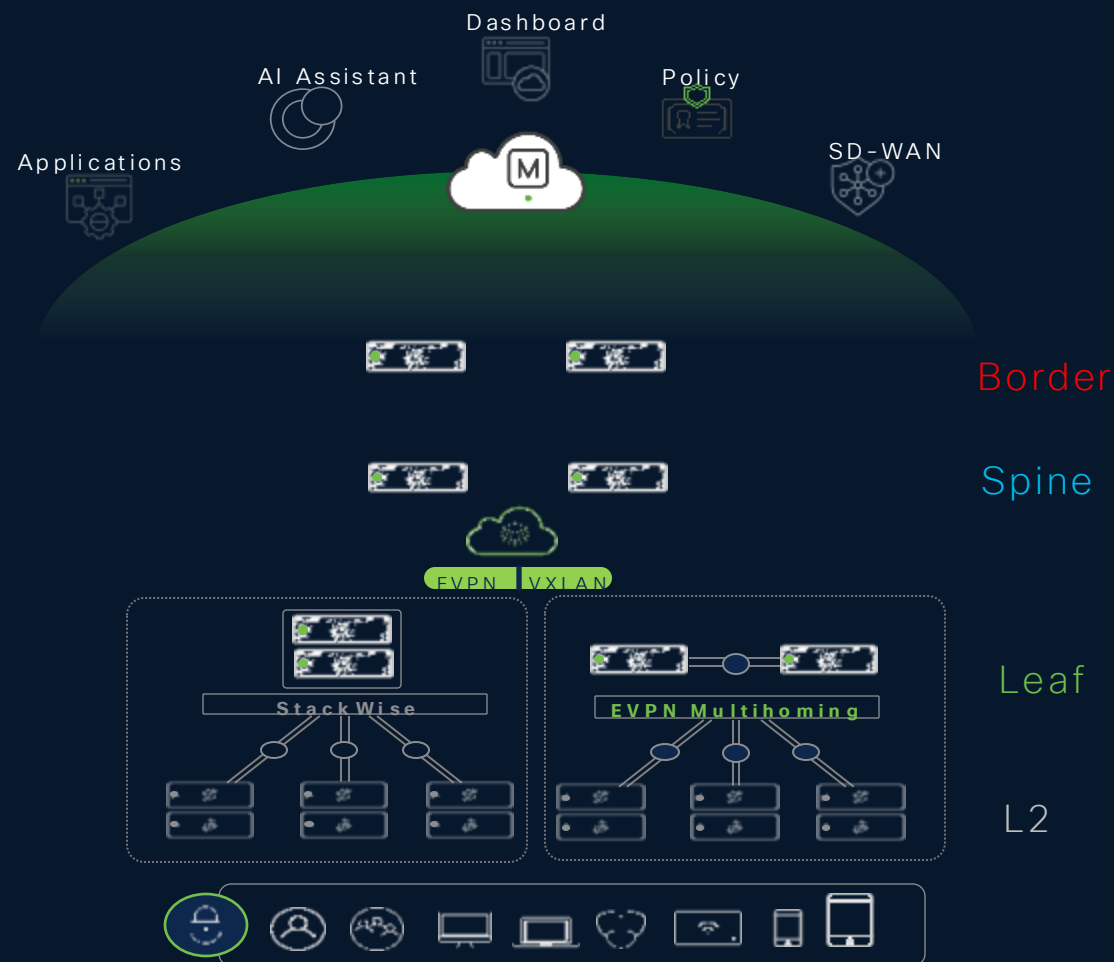
**Securing the network** with Adaptive Policy



**Optimized** L2 extension



Day-2 Operational Assurance



## Create fabric

1 Fabric setup

2 VRFs

3 Fabric subnets

4 Fabric border routing configuration

5 Summary

The Meraki fabric can be composed of one or many networks and devices in those networks to provide a BGP-EVPN fabric overlay.

To create a fabric, you will need to provide a name, select one or many networks where the fabric will be built, and select and assign the roles to the applicable switches in the list below.

Fabric name

San Jose campus

Select networks/network group

Network A × Network B ×

BGP autonomous system number

65500

BGP auth key

\*\*\*\*\*

Underlay loopback IP pool

192.0.0.0/23

Select roles for devices

The list will populate all fabric supported switches that are in the networks selected. The default roles are defined as Borders, Spines, and Leaves, but can be modified to assign multiple roles to a single switch based on the network design and use case.

Q Search

Network

Model

Role

Filters 6 results

2 items selected Select all

Remove role

Edit role

Devices	Status	Local IP	Networks	Serial column	Tag	Roles	Action
<input checked="" type="checkbox"/> MDF Core-01(9500-24Y4CX2)	Online	10.10.100.1	Network A	Serial number	Tag		
<input checked="" type="checkbox"/> MDF Dist-01 (9500-48Y4Cx2)	Online	10.10.192.1	Network A	Serial number	Tag 1 Tag 2		
<input type="checkbox"/> MDF Dist-02 (9500-48Y4Cx2)	Online	10.10.176.1	Network A	Serial number	Tag 2	Leaf	
<input type="checkbox"/> NetB-MDF-Stack (9300x Stack)	Online	10.10.20.1	Network B	Serial number	Tag 3	Border Spine Leaf	
<input type="checkbox"/> NetC-MDF-Stack (9300x Stack)	Online	10.10.40.1	Network C	Serial number	Tag	Border	
<input type="checkbox"/> NetD-MDF-Stack (9300x Stack)	Online	10.10.30.1	Network D	Serial number	Tag	Border	

Rows per page

30

1-30 of 300

1

2

...

10

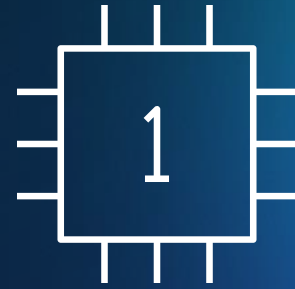
>

Cancel

All changes saved

Next

# Scalable devices ready for AI



High-performance,  
low latency

Cisco Silicon One +  
co-processor for  
security and AI

Post-quantum  
secure

Intelligent energy  
efficiency

# Introducing Smart Switches for the AI-powered campus



## Cisco C9350 Smart Switches

AVAILABLE NOW



Unparalleled density,  
speed, and security

Backward compatible  
chassis with front to  
back airflow

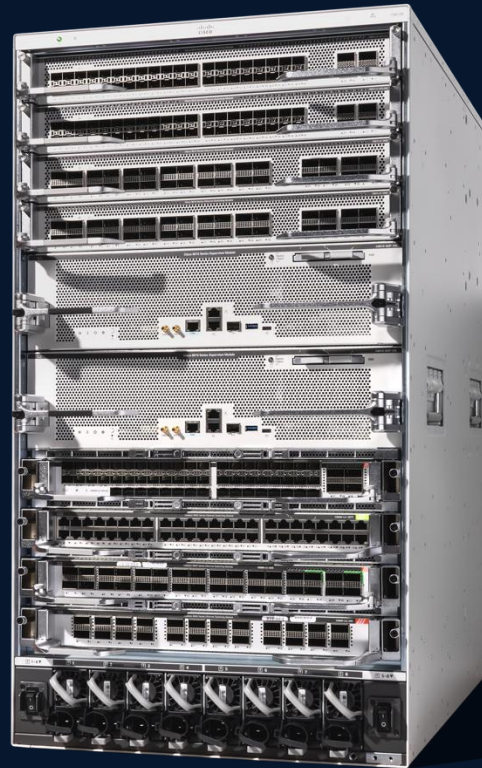
Powered by Cisco  
Silicon One

High density  
chassis with state-  
of-the-art hardware

Entirely modular and  
upgradable system

# Introducing

## Smart Switches for the AI-powered campus



AVAILABLE NOW

## Cisco C9610 Modular Core Smart Switches

Boosts hardware  
encryption post  
quantum security

Intelligently adaptable to  
mitigate link failures,  
congestion, and  
bandwidth challenges

Flexible and  
programmable for  
future AI and ML  
workloads

High-scale and  
low latency for time-  
sensitive applications

Efficient power  
performance

# Powered by Cisco Silicon One for Scale, Security, and Efficiency



**Silicon One A100L and  
Silicon One K100L**



# Announcing 19 new switches joining Cisco's leading portfolio

## DIN-rail Portfolio



8x

+



2x

NEW!

Cisco IE3100 - Compact 4PPoE



2x

Cisco IE3200



4x

Cisco IE3300



2x

Cisco IE3400



6x

NEW!

Cisco IE3500

## IP67 Portfolio



2x

NEW!

Cisco IE3100H - Compact



6x

Cisco IE3400H



8x

NEW!

Cisco IE3500H

## Rackmount Portfolio



4x

Cisco IE9300 - All Copper



3x

Cisco IE9300 - All Fiber



NEW!

Cisco IE9300 - Mixed Ports

# Wi-Fi 7 for every operational scale



CW9172H

6 Spatial Streams  
Dorm Rooms, Hospitality



CW9174E

8/10 Spatial Streams  
External antennas

Dec 2025



CW9176D1

12 Spatial Streams  
Integrated Directional

UWB



CW9179F

16 Spatial Streams  
LPV/Stadium



CW9171I

4 Spatial Streams  
Omnidirectional

Dec 2025



CW9172I

6 Spatial Streams  
Omnidirectional



CW9174I

8/10 Spatial Streams  
Omnidirectional

Dec 2025



CW9176I

12 Spatial Streams  
Omnidirectional

UWB



CW9178I

16 Spatial Streams  
Omnidirectional

UWB

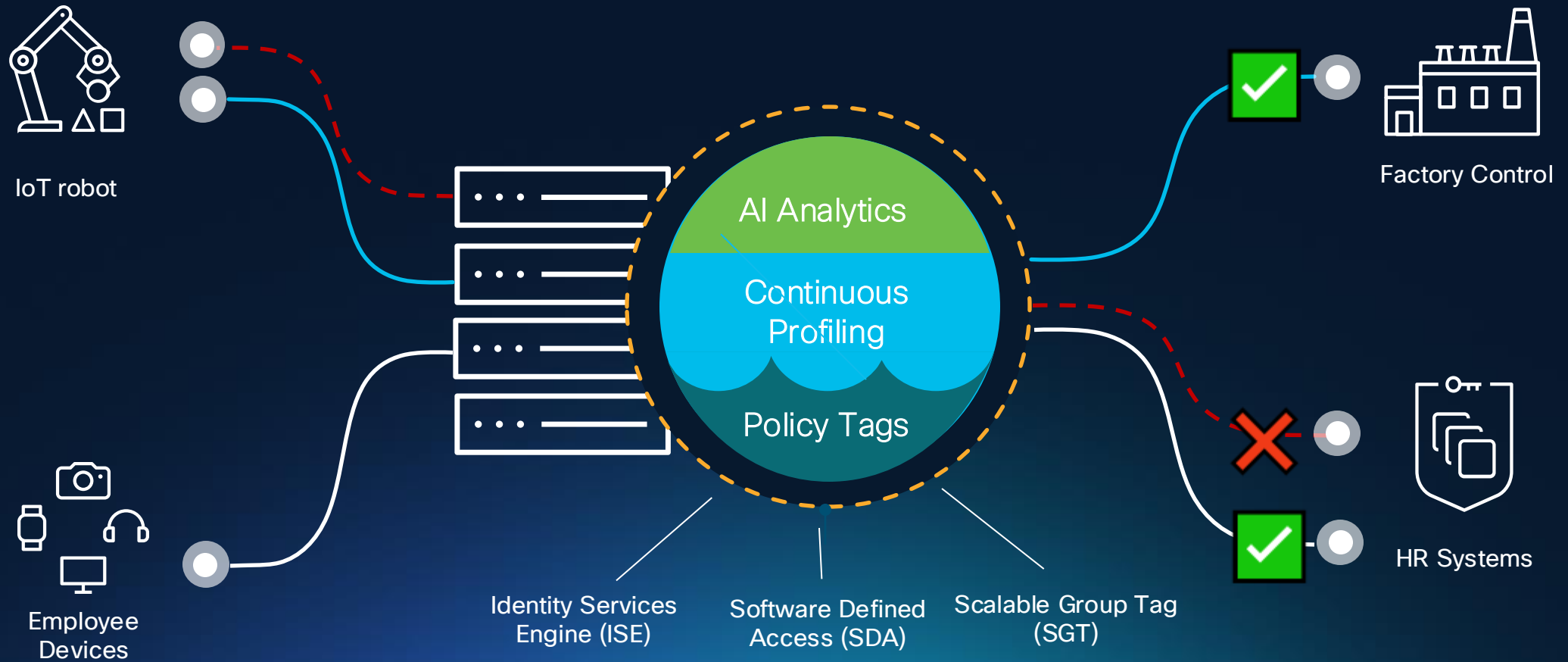
Wi-Fi 7 | Global Use AP | Unified License | AI Optimized

# Security fused into the Network



# Securing network access

Scalable microsegmentation to protect every connection



# New threats attack networks directly



## Attacks on Infrastructure

Exploits like Salt Typhoon that target unpatched software on key infrastructure



## Attacks on Encryption

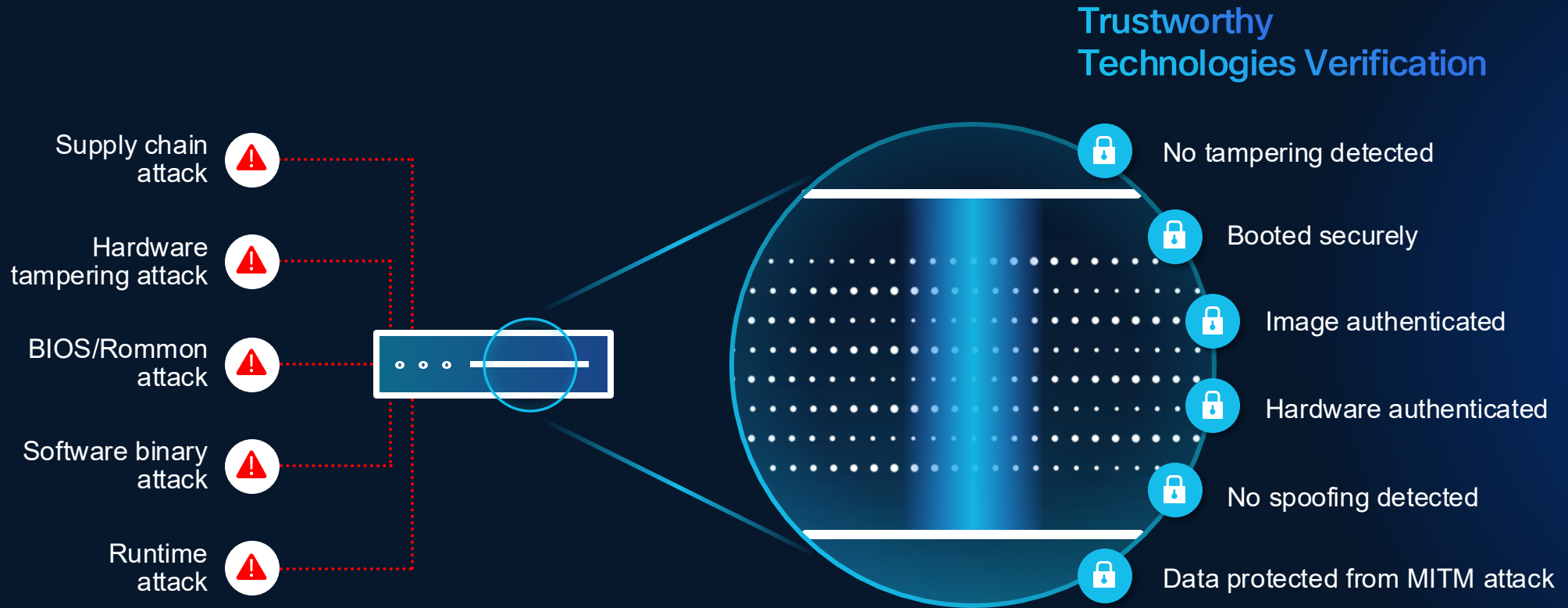
“Harvest now, decrypt later” attacks where encrypted data is extracted and stored, anticipating quantum computing.

# Securing network connectivity



# Securing the device

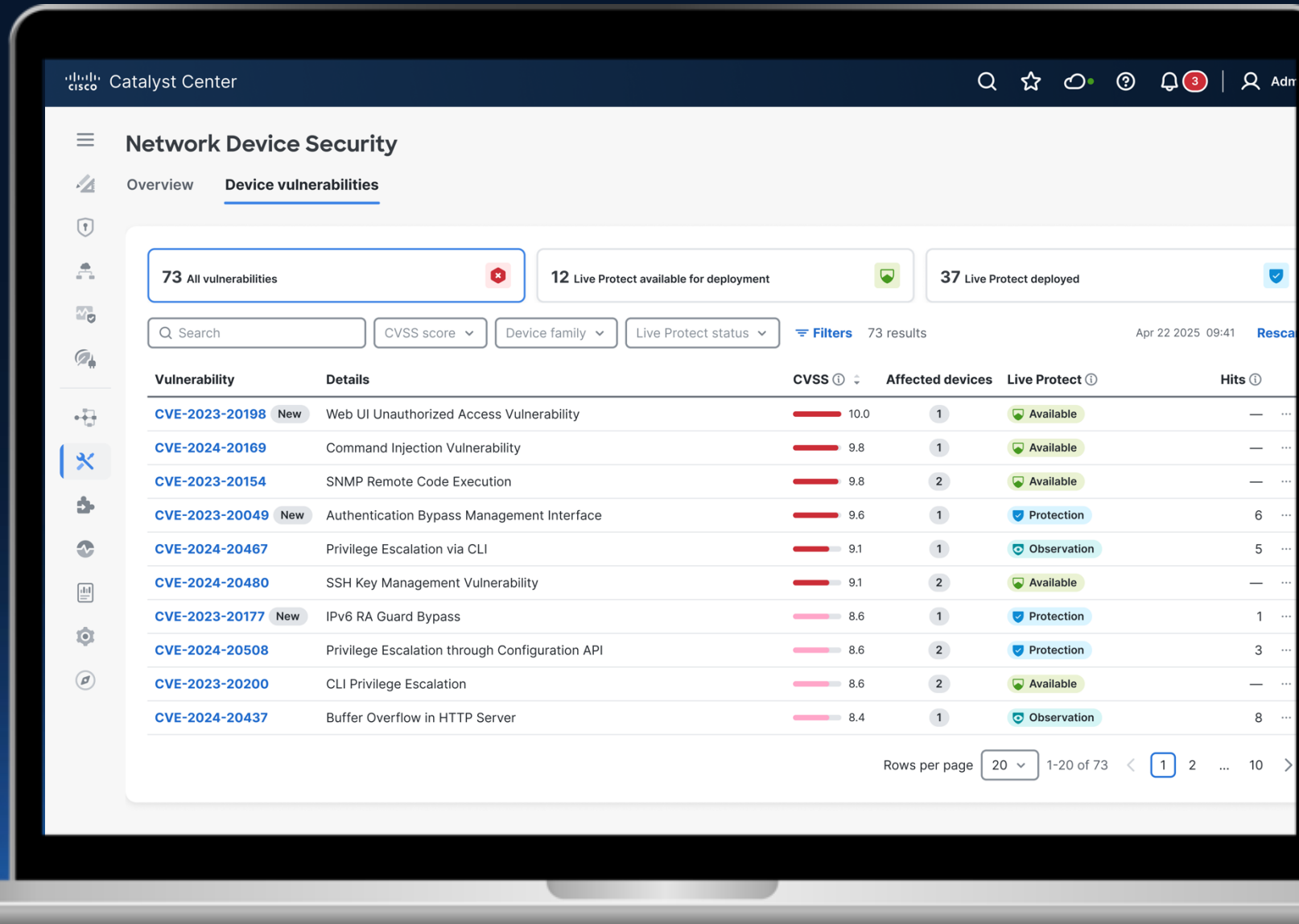
Secure from hardware to software, from boot time to runtime



Coming

# Live Protect

Mitigate new threats in near-real time—without upgrading image or rebooting device





# Key Takeaways

## 1 A future proof campus network

- High performance, hyper-resilient campus network serves users with lightening fast reliable connectivity (including Wifi7)
- Up to 90W Power for IOT & Collaboration devices, ability to add as many 4K Cameras / Video / AI agents (one day), and low latency to support advanced workloads such as AR or robotics.
- Ability to run more complex services right on the switch (e.g. Hypershield in the future)

## 2 The most secure campus infrastructure on the market

- Cisco is a trusted security partner, offering a compelling vision, components needed for Security, with a roadmap for the future
- Cisco Delivered Secure Architecture offers Layered Security, Protecting Devices, Data Traffic, and Endpoints.
- Automation to manage micro & macro segmentation at scale. Works with existing NGFW, and delivers consistent Policy across my entire network.

## 3 Simpler NetOps

- Cisco is delivering greater simplicity from Cisco with a plan for consistency between on Prem and Cloud, allowing migration to cloud over time (remote offices first and/or leverage hybrid mode etc.)
- Leverage benefits of SDA from the cloud, with a simpler more streamlined experience.
- AI Assistant and End2End Assurance help get application visibility and troubleshoot faster.

Thank you

