

# Future-proofed workplaces at every scale

Matt Gillies

Cisco Fellow and Chief Architect



# Cisco powers how people and technology work together across the physical and digital worlds



AI-Ready Data Centers



Future-Proofed Workplaces

Secure Global Connectivity

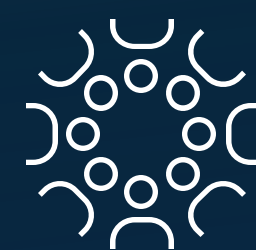


Digital Resilience



Accelerated by Cisco AI





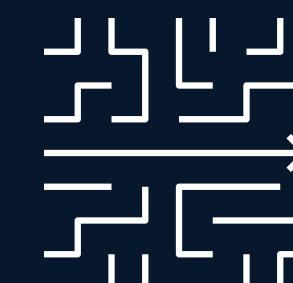
## Technology stack for the Future-Proofed Workplaces

### Collaboration

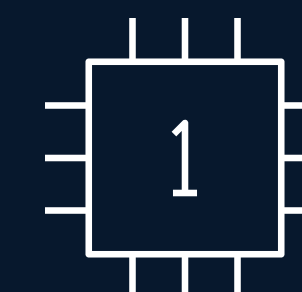
Employee & Customer experience  
amplified by AI

### Architecture for the AI-Ready Secure Network

Operational simplicity  
powered by AI



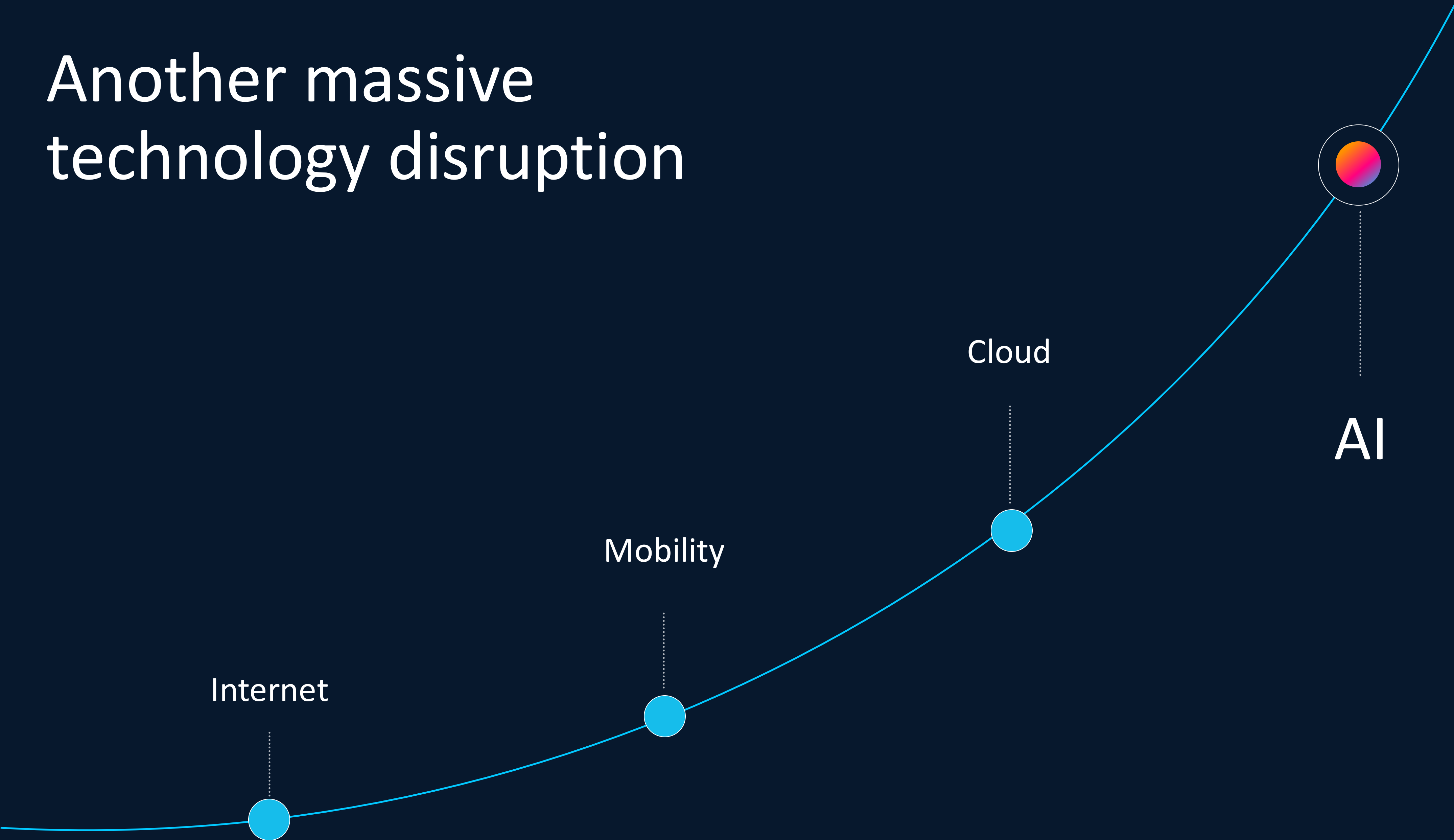
Scalable devices  
ready for AI



Security  
fused into the network



# Another massive technology disruption



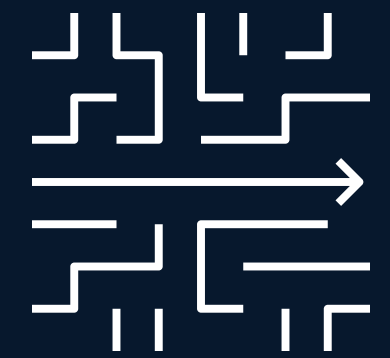


This requires a **network**  
purpose built for AI

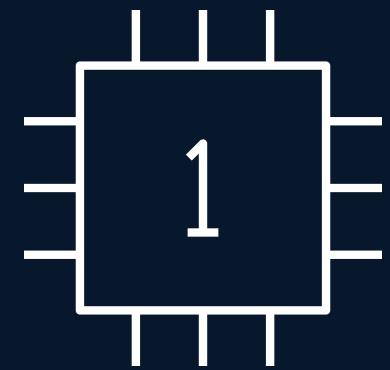


# Architecture for the AI-Ready Secure Network

**Operational simplicity**  
powered by AI



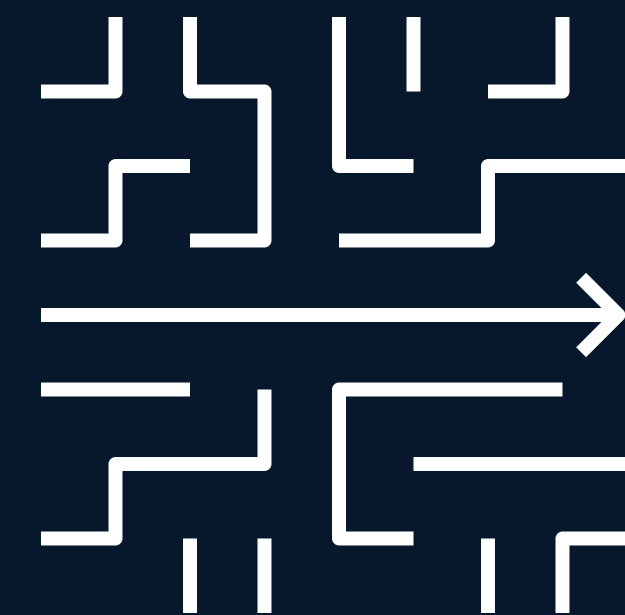
**Scalable devices**  
ready for AI



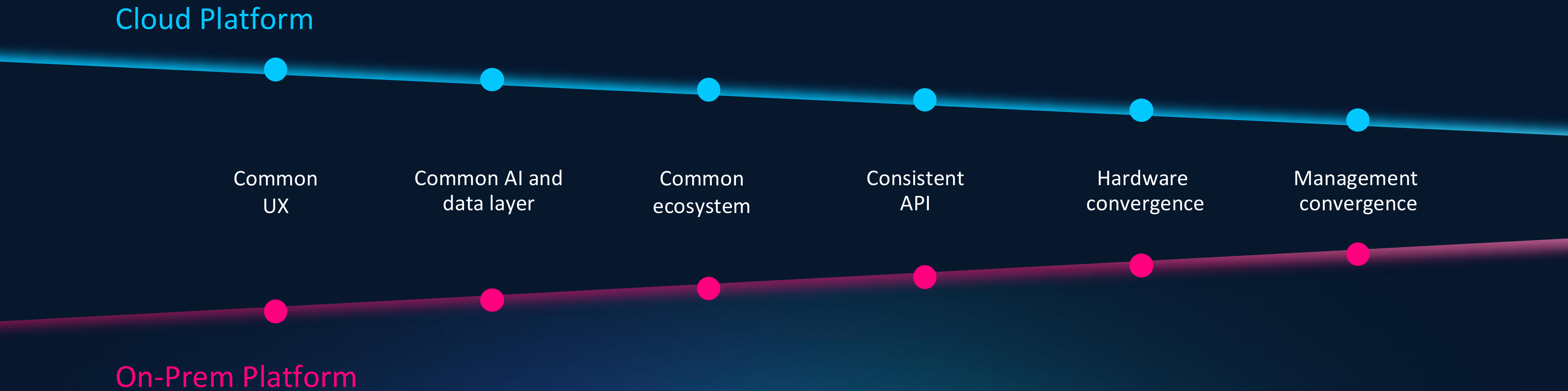
**Security**  
fused into the  
network



Operational simplicity  
powered by AI



# Journey to Network Platform Convergence





# Cisco's Unified Platform

PLATFORM

Management

API / Integrations

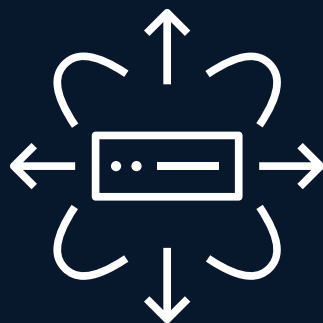
Assurance

Intelligence

HARDWARE



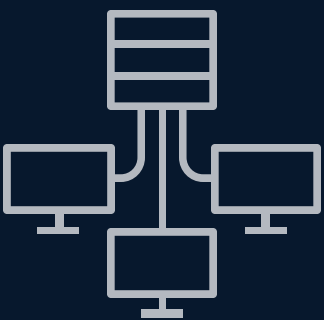
Smart  
Switches



Secure  
Routers



Wireless



Industrial  
IoT

# Unifying Catalyst & Meraki





# Catalyst Center

## Premier On-Prem experience

Deeper Assurance, Network  
Automation, SDA innovation  
and platform convergence

## Quality

Improve CSAT  
Complete compliance

---

## Market Access

Virtual Appliance, Security Centric Capabilities, new device  
support and alignment

---

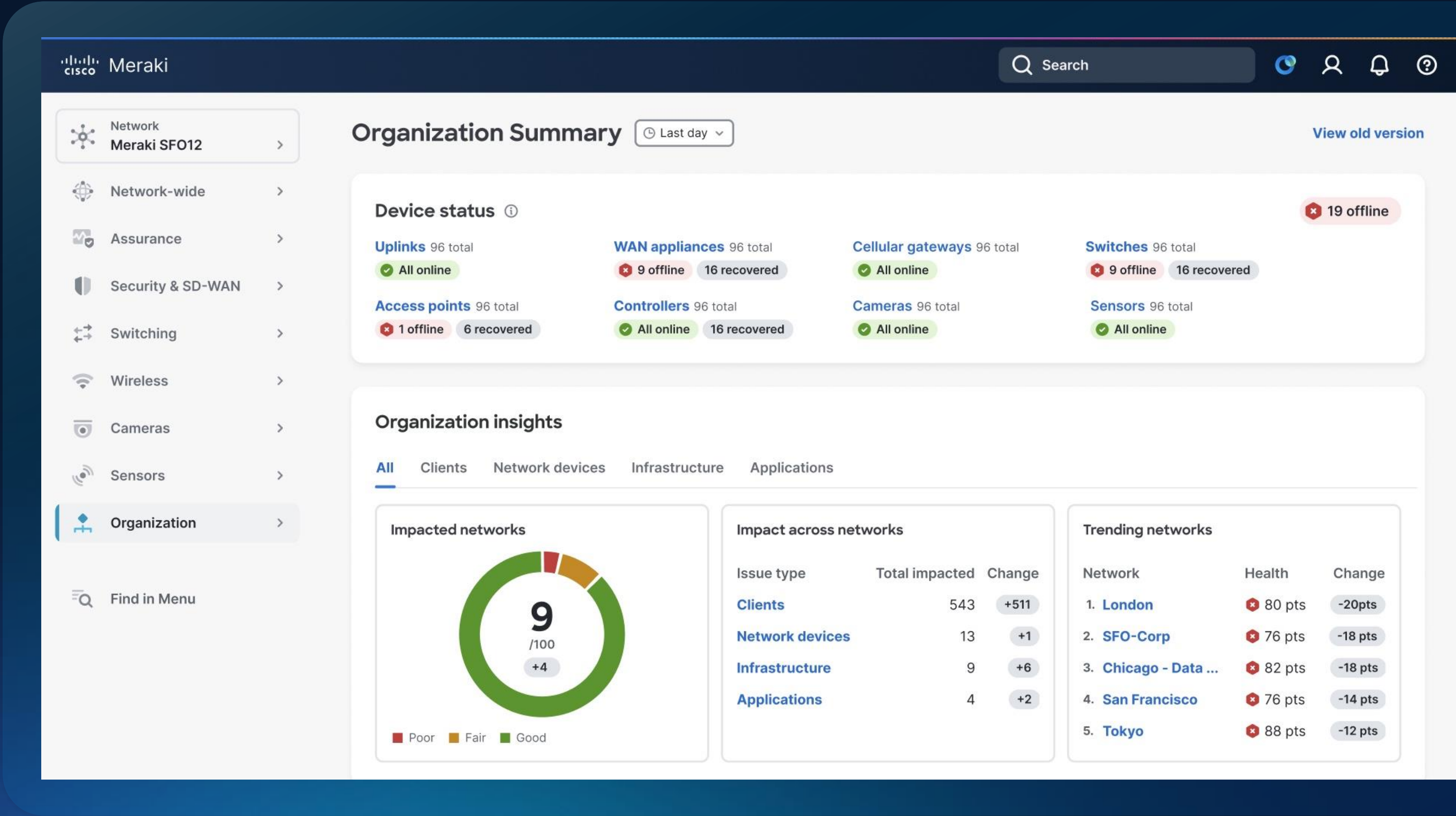
## Platform Unification

Integration of Meraki Dashboard, Catalyst Center and ThousandEyes  
with Assurance

# Announcing Unified cloud management

Single dashboard for Meraki, Catalyst, all next-gen devices

AVAILABLE NOW





# Expanded Cloud Management for Catalyst portfolio



## Wireless

- Full wireless support
- Scale large campus wireless with Campus Gateway

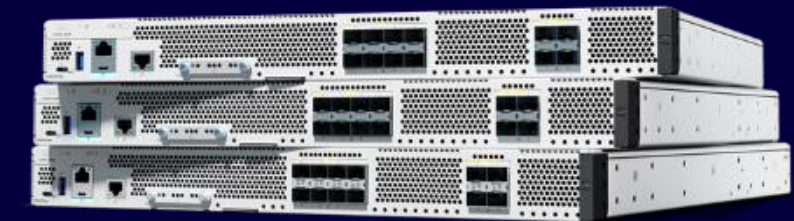
GA | June



## Switching

Expanded management for access, industrial, and core switching, including C9200 and C9500

GA | July



## Routing

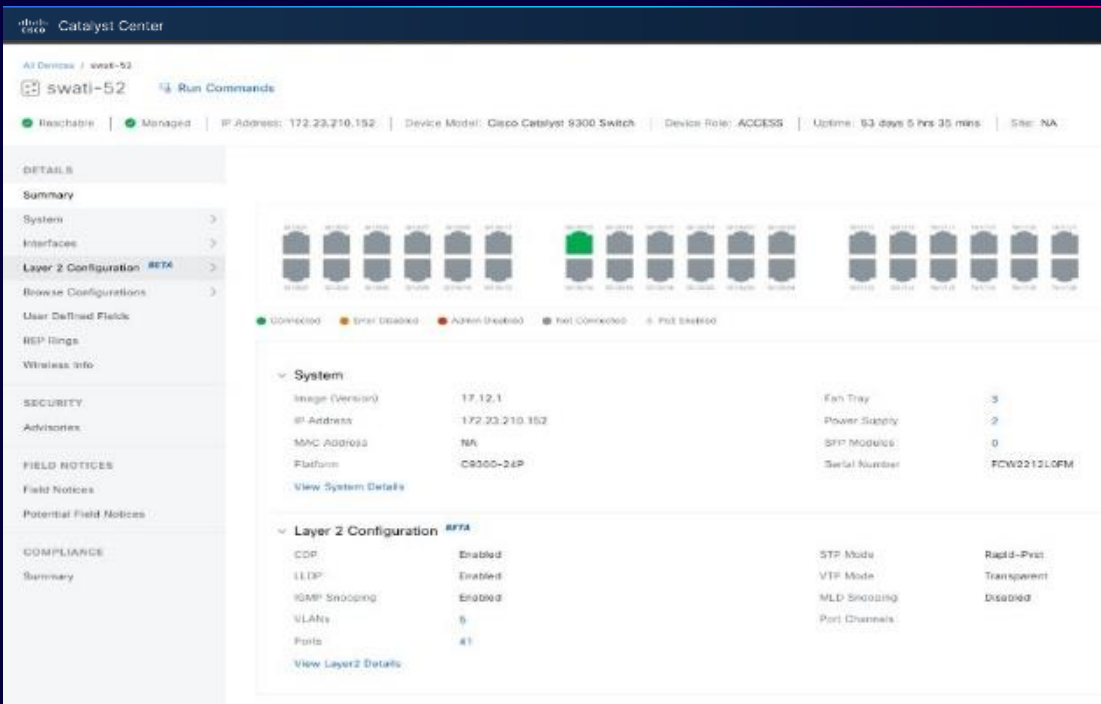
Next-gen routing support coming

Alpha | June

**Cloud management powered by cloud-native IOS XE**

# Catalyst Center – Simplifying Day 0/Day 1

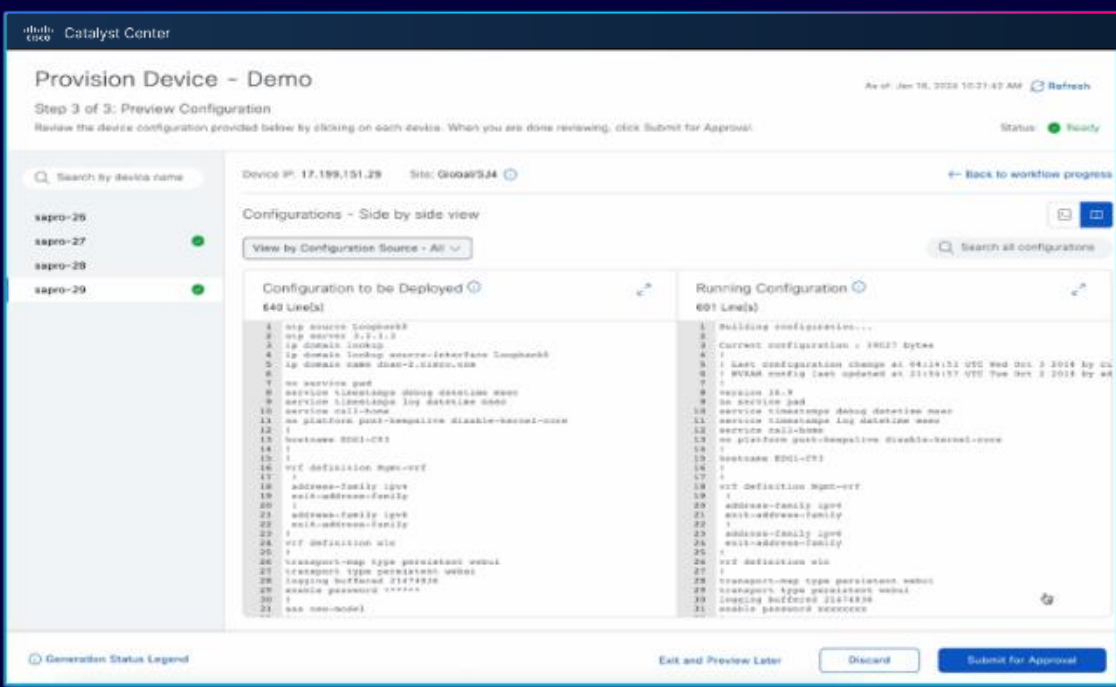
## Brownfield Automation



Enable device-by-device feature learning and configuration

GA | Now

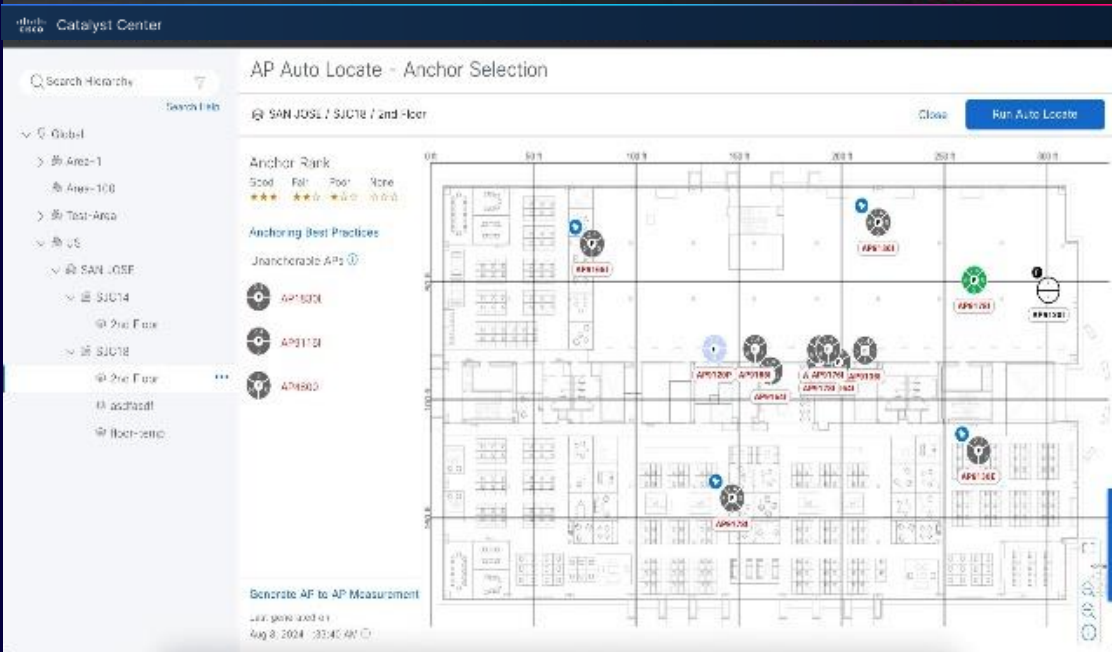
## Visibility and Control



Provide a review and approval process for any system or user-triggered configuration to network devices

GA | Now

## AP Auto-locate



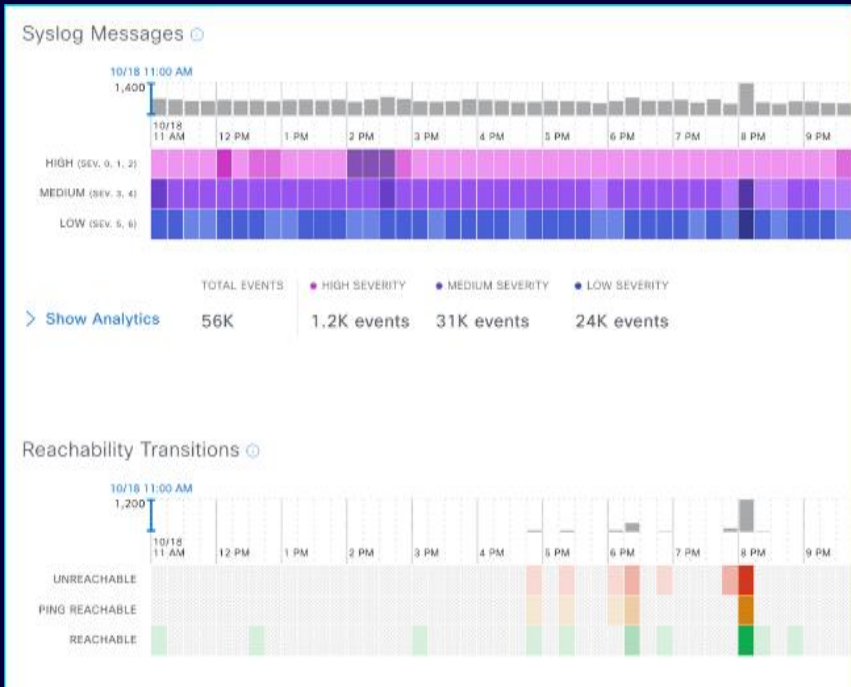
Improve accuracy of AP placements on maps to detect misplacements automatically

GA | Now



# Catalyst Center – Simplifying Day N

## AI Event Analytics



Get a single-pane-of-glass view across all network events to facilitate observability and analytics

GA | Now

## RBAC by Site

The image shows the 'Resource Domain' configuration page in Catalyst Center. It includes a search bar and a table of resource domains. The table has columns for Resource domain, Role, Scope, Description, and Number of Assigned Users.

Resource domain	Role	Scope	Description	Number of Assigned Users
EMEA-Headless	InfoDesk-Regional	Global/EMEA	EMEA Headless role wt...	0
EMEA-Observer	Regional-Observer	Global/EMEA	Observer role for EMEA	0
Frankfurt-Headless	InfoDesk-Regional	Global/EMEA/Frankfurt	Headless access for Frank...	0
Frankfurt-Observer	Regional-Observer	Global/EMEA/Frankfurt	Read only for Frankfurt	0
London-Observer	Regional-Observer	Global/EMEA/London	London read only access	0
NA-EMEA-Global	Info-Admin	Global	Resource domain for glo...	0
Observer-Global	Observer	Global	Resource domain for glo...	0
Paris-Headless	InfoDesk-Regional	Global/EMEA/Paris	Headless access for Paris	0
Paris-Observer	Regional-Observer	Global/EMEA/Paris	Read only Paris	0
SUPER-ADMIN-Global	SUPER-ADMIN	Global	Resource domain for glo...	1

Set granular Role-Based Access Control based on Site Scope

Controlled Availability | June

## Rule Based Compliance

The image shows the 'Rule Based Compliance Policies' configuration page in Catalyst Center. It includes a search bar and a table of compliance policies. The table has columns for Policy name, Description, Rules, Sites, Status, and Actions.

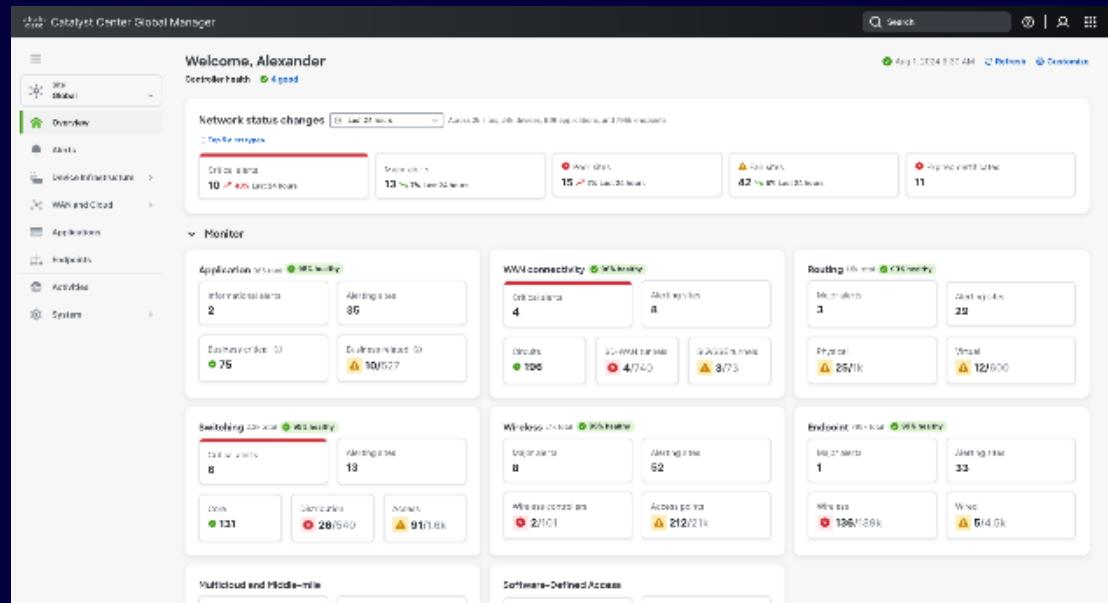
Policy name	Description	Rules	Sites	Status	Actions
All interfaces should restrict traffic	This policy checks to make sure that all interfaces...	2	0	No sites assigned	...
Another compliance policy	This is the description text for a compliance policy...	3	6	Active	...
Another compliance policy	This is the description text for a compliance policy...	4	4	Active	...
Another compliance policy	This is the description text for a compliance policy...	4	2	Site variables pending	...
Another compliance policy	This is the description text for a compliance policy...	1	0	No conditions configured	...
Another compliance policy	This is the description text for a compliance policy...	2	2	Active	...

Run custom compliance rules and detect issues network-wide

Controlled Availability | June

# Launched at Cisco Live

## Catalyst Center Global Manager



Streamline global network management from a single dashboard

Controlled Availability | June

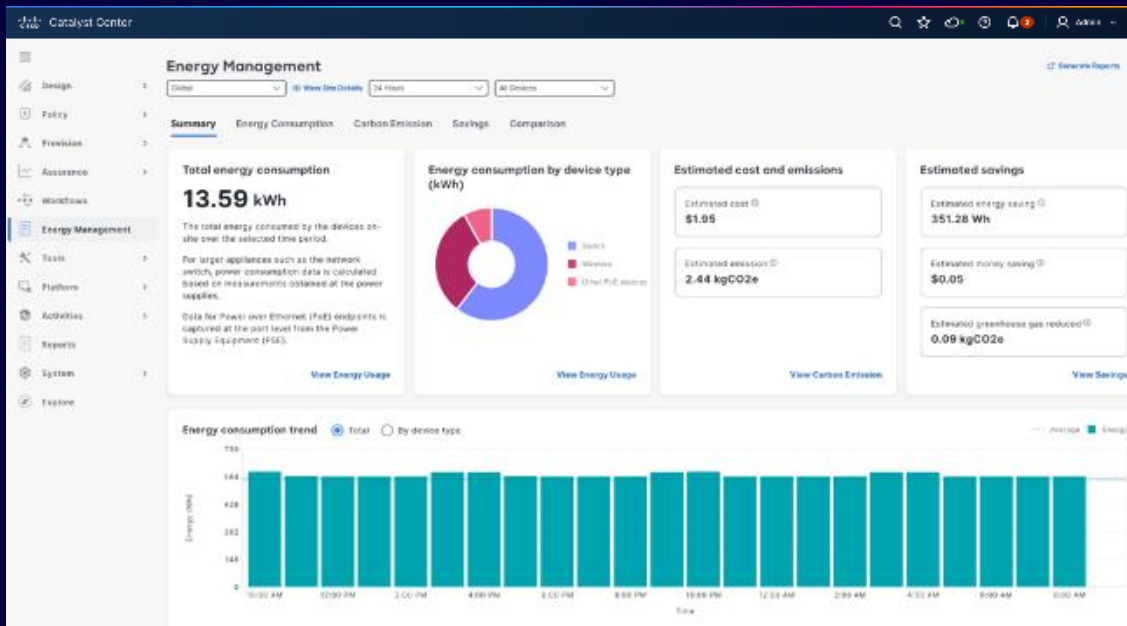
## Virtual Appliance Support for Azure



Deploy a virtual appliance on Azure for operational flexibility

Controlled Availability | June

## Energy Management



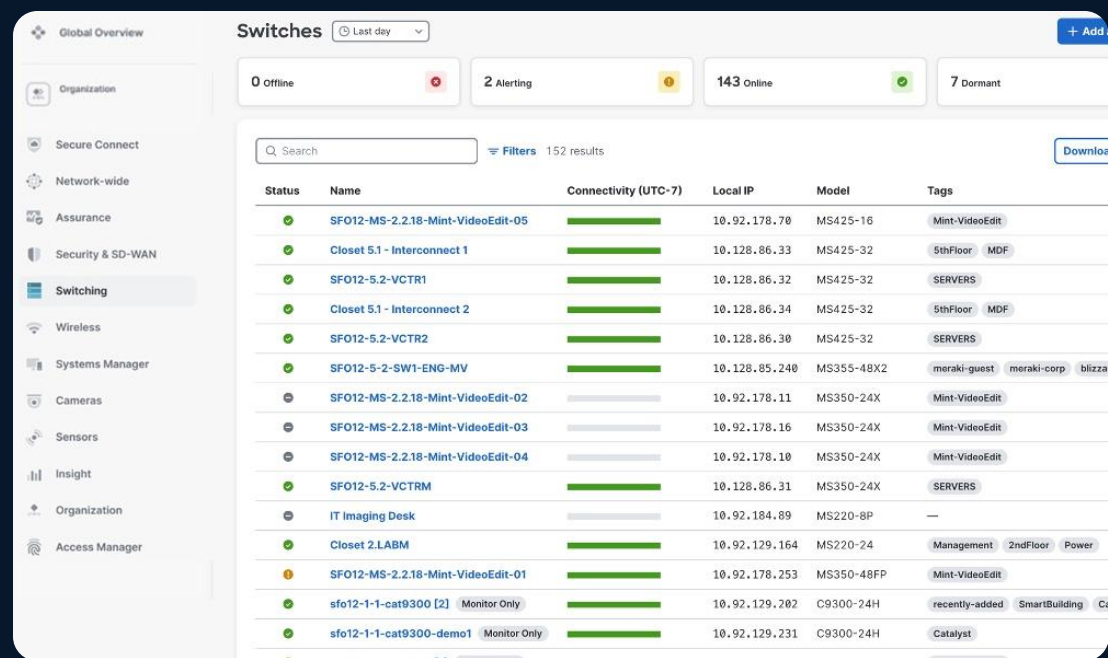
Optimize energy usage and save costs with standardized energy metrics and insights

Controlled Availability | June



# New in the Unified Platform

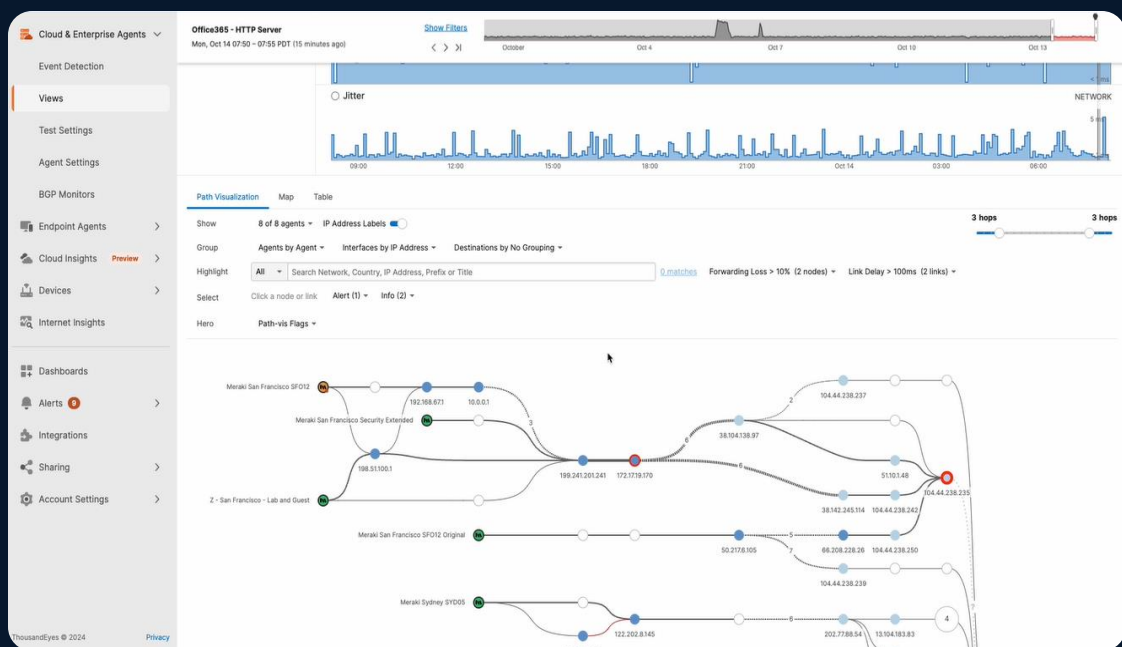
## Unified management



Unified management for Catalyst and Meraki: cloud, on-prem, or hybrid

GA | JUNE

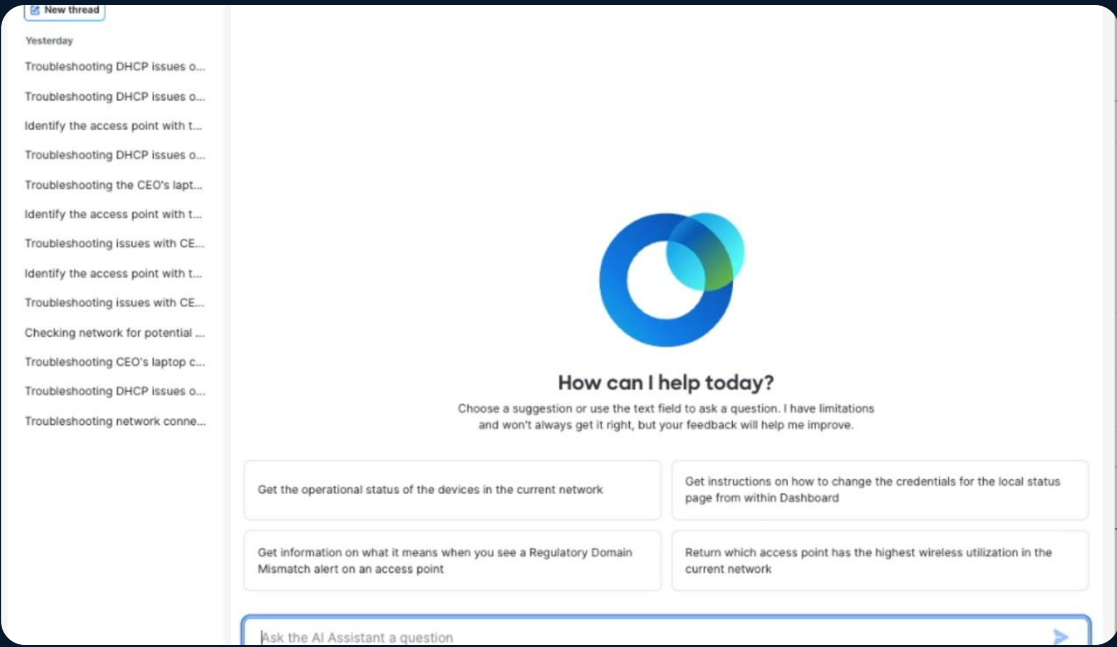
## Multilayered assurance



Deeper visibility into enterprise networks, cloud, and endpoints—plus Splunk integration

GA | JUNE+

## AI Assistant



Ask, explore and act in natural language; automated workflows for configs changes and switch migrations

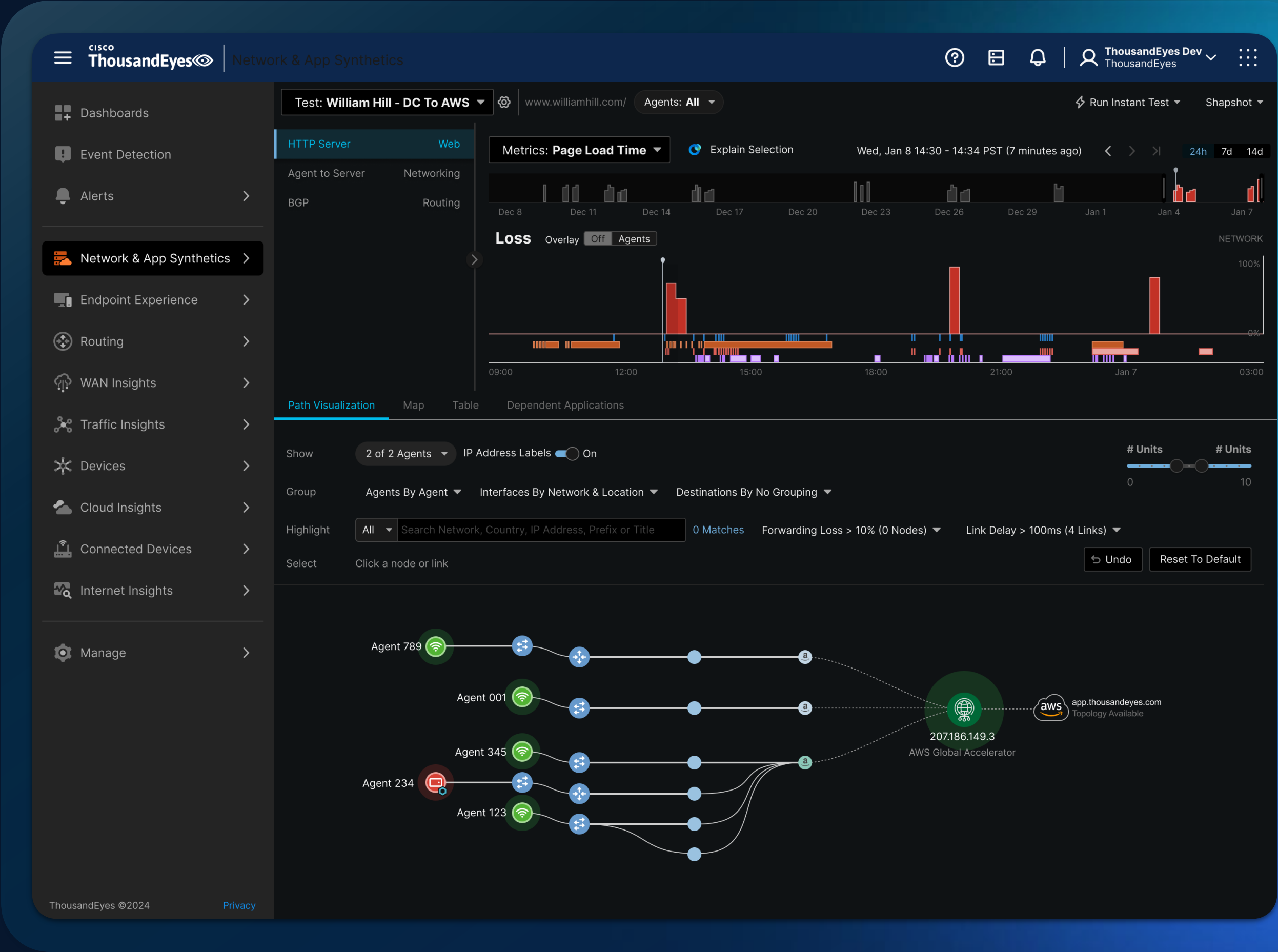
Beta | JUNE

# Announced

## Enhanced multi-layer assurance

Expanded visibility across owned and unowned networks, cloud, wired and wireless devices

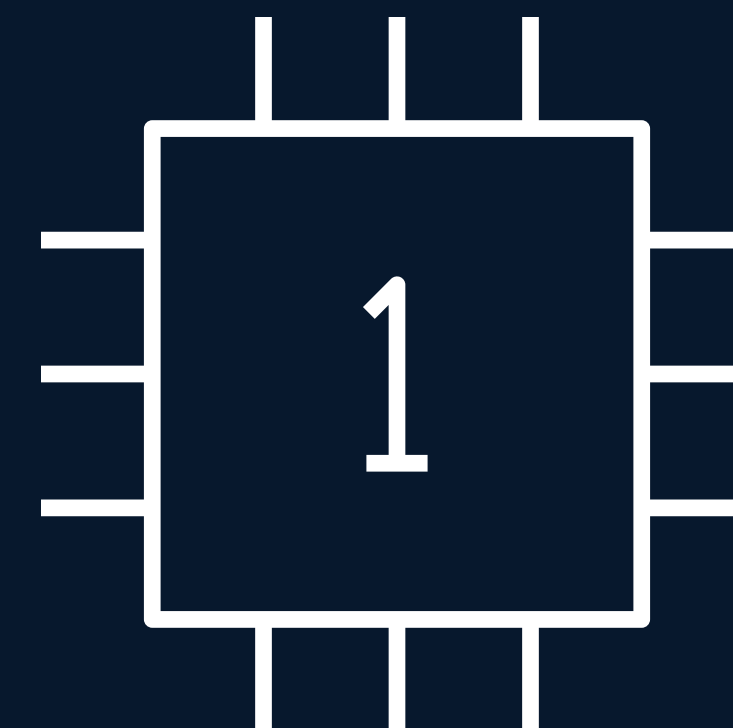
NOW AVAILABLE







# Scalable devices ready for AI



# What does it mean to build hardware for the AI era?

## Silicon

High bandwidth and high performance. Post-quantum ready

---

## OS

Pervasive programmability, deep observability, near-zero downtime architecture

---

## System

AI driven visibility, programmable open ecosystem, power efficient



Smart Switches



NEW

Secure Routers



NEW

Campus Gateway &  
Wi-Fi 7



NEW



NEW

Scale OT for AI

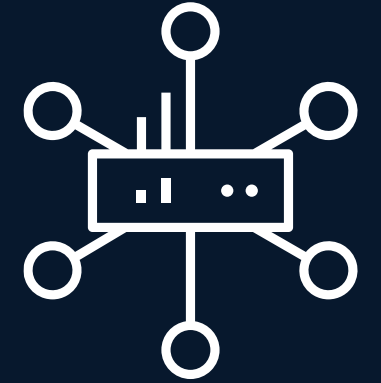


NEW

# A new lineup for Secure Networking

# Security fused into the network

**Securing the device**



**Securing network  
connectivity**



**Securing users,  
clients, and apps**



# Security fused into the network



## Securing users, clients & apps

Protecting user access and application interactions

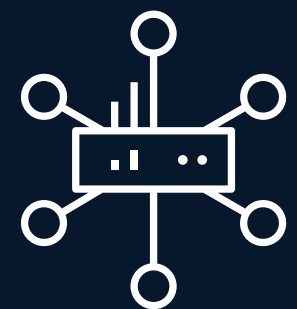
- Scalable segmentation
- Software-Defined Access
- Next-gen firewall



## Securing network connectivity

Safeguarding and optimizing network connections

- Quantum-resistant:
  - MACsec
  - IPsec
  - WAN MACsec



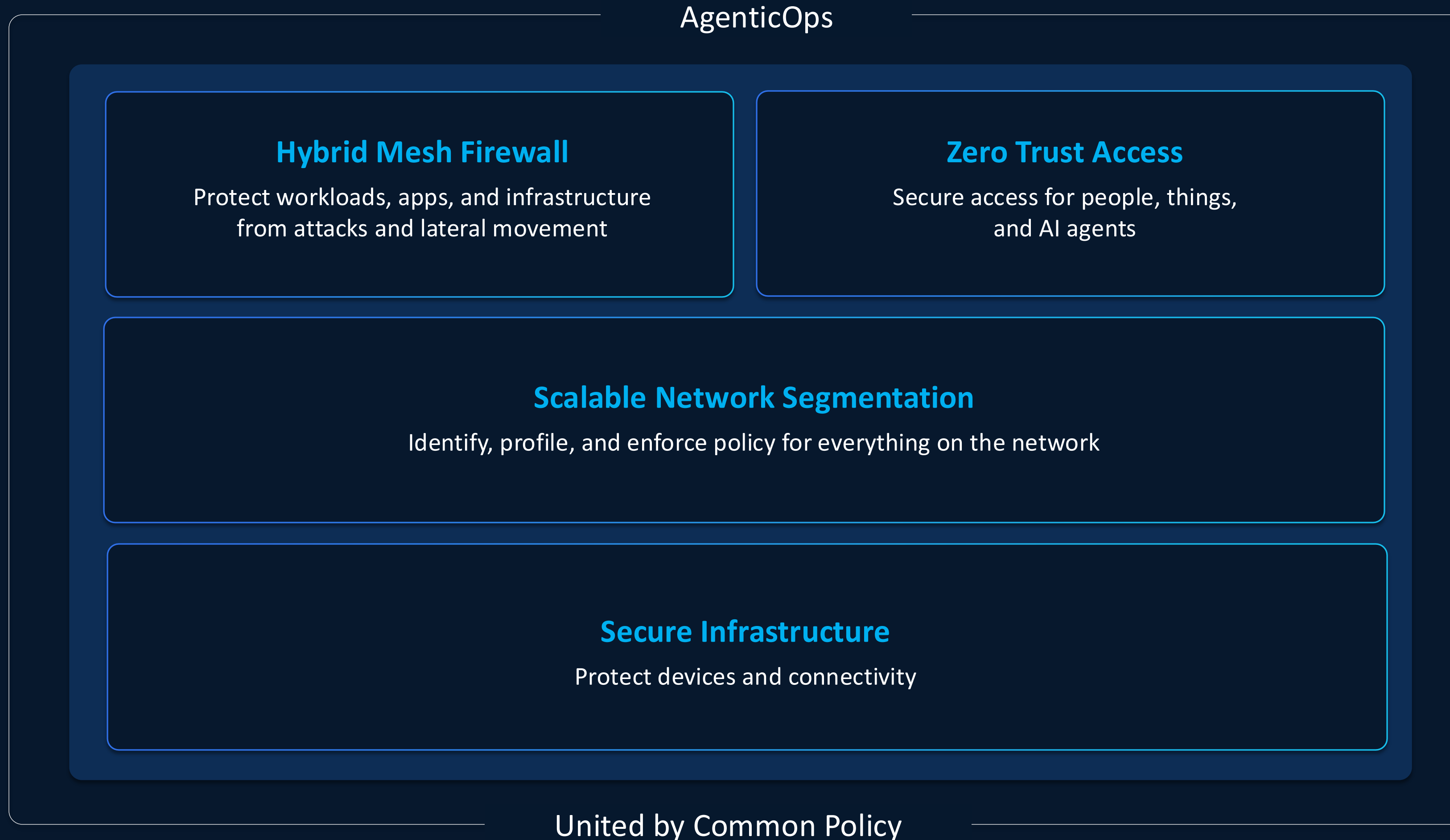
## Securing the device

Protecting and ensuring compliance of devices

- Quantum-resistant secure boot
- Compensating controls



# Reference design for fusing security into the network



- Identity-first
- Continuously verified
- Enterprise-wide policies
- Comprehensive Threat Intel
- Distributed Enforcement

Cisco is driving future-proofed workplace outcomes  
that unite our portfolio.

Security & Networking are not longer independent  
domains; **Secure Networking** is required to ensure  
digital resilience.

Together, they underpin the critical infrastructure  
for AI.

Thank you