



# 日本市場向け Cisco Unified Communications 11.0 Phase III システ ム リリース テスト結果サマリ

シスコシステムズ合同会社

2016 年 02 月

# コンポーネント一覧 (1)

| カテゴリ         | コンポーネント   |                                | バージョン                          |
|--------------|---|--------------------------------|--------------------------------|
| Call Control | Cisco Unified Communications Manager                                      | Version                        | 11.0.1.20000-2                 |
|              |   | Locale                         | 11.0.1.1000-1                  |
|              |   | Dial Plan                      | 3-1-9.JP                       |
|              | Cisco Unified Survivable Remote Site Telephony (SRST)                     | Version                        | 10.5                           |
|              |   | IOS                            | 15.5.3 M                       |
|              | Cisco TelePresence Video Communication Server (VCS)                       | Version                        | X8.7                           |
|              |   | Locale                         | vcs-lang-ja-jp_8.5-1_amd64.tlp |
|              | Cisco TelePresence Video Communication Server Expressway (VCS Expressway) | Version                        | X8.7                           |
|              |   | Locale                         | vcs-lang-ja-jp_8.5-1_amd64.tlp |
|              | Cisco TelePresence Video Communication Server Expressway on VM            | Version                        | X8.7                           |
| Locale       |   | vcs-lang-ja-jp_8.5-1_amd64.tlp |                                |

# コンポーネント一覧 (2)

| カテゴリ                             | コンポーネント  |           | バージョン          |
|----------------------------------|--|-----------|----------------|
| Applications                     | Cisco Unified Communications Manager IM and Presence Service | Version   | 11.0.1.10000-6 |
|                                  |  | Locale    | 11.0.1.1000-1  |
| Voice Mail and Unified Messaging | Cisco Unity Connection                                       | Version   | 11.0.1.20000-2 |
|                                  |  | Locale    | 11.0.0.1-1     |
| Network Management               | Cisco Prime Collaboration Provisioning                       | Version   | 11.0.0.815     |
|                                  | Cisco Prime Collaboration Assurance and Analytics            | Version   | 11.0.63217     |
| End Point                        | Cisco IP Phone 7821/41/61                                    |           | 11-0-1-9       |
|                                  | Cisco IP Phone 7821/41/61                                    | Dev Build | 11-0-1-9dev    |
|                                  | Cisco IP Phone 8811/41/45/51/61/65                           |           | 11-0-1-9       |
|                                  | Cisco IP Phone 8811/41/45/51/61/65                           | Dev Build | 11-0-1-9dev    |
|                                  | Cisco Unified IP Phone 8941/8945/8961                        |           | 9-4-2SR2-2     |

# コンポーネント一覧 (3)

| カテゴリ      | コンポーネント  | バージョン       |
|-----------|--|-------------|
| End Point | Cisco Unified IP Phone 9951/9971                       | 9-4-2SR2-2  |
|           | EX60 - Cisco TelePresence System EX60                  | TC 7.3.4    |
|           | EX90 - Cisco TelePresence System EX90                  | TC 7.3.4    |
|           | SX20 - Cisco TelePresence SX20 Quick Set               | CE 8.0      |
|           | SX80 - Cisco TelePresence SX80 Codec                   | CE 8.0      |
|           | SX10 - Cisco TelePresence SX10 Quick Set               | CE 8.0      |
|           | C90 - Cisco TelePresence System Integrator Package C90 | TC 7.3.4    |
|           | 500-32 - Cisco TelePresence System 500 (32)            | TX6.1.10(7) |
|           | TX9000 - Cisco TelePresence System TX9000              | TX6.1.10(7) |
|           | MX200-G2 - Cisco TelePresence MX200-G2                 | CE 8.0      |
|           | MX300-G2 - Cisco TelePresence MX300-G2                 | CE 8.0      |
|           | DX650 – Cisco DX650                                    | 10.2.5      |

# コンポーネント一覧 (4)

| カテゴリ                          | コンポーネント                              |       | バージョン       |
|-------------------------------|--------------------------------------|-------|-------------|
| End Point                     | DX70 - Cisco DX70                    |       | 10.2.5      |
|                               | DX80 - Cisco DX80                    |       | 10.2.5      |
| Communications Infrastructure | ISR Gateways (3945e/3925e/3945/2921) | IOS   | 15.5.3 M    |
|                               | ISR 4451-X                           | IOS   | 3.14.0S     |
|                               | Cisco Unified Border Element for ISR |       | 15.5.3 M    |
|                               | Cisco 3750 PoE Switch                |       | 15.0.2-SE 5 |
|                               | vCenter Server                       |       | ESXi 5.1.0  |
|                               | MDS Switch                           | M9500 | 5.2(2 a)    |

# コンポーネント一覧 (5)

| カテゴリ                  | コンポーネント                                  |         | バージョン                            |
|-----------------------|--|---------|----------------------------------|
| TelePresence          | Cisco TelePresence Management Suite-TMS  | Version | 15.0.1                           |
|                       | MCU 4510 & 5310 - Cisco TelePresence MCU | Version | 4.5 (1.72)                       |
|                       |  | Locale  | MCU_4-3_UI_and_audio_JPN.package |
|                       | Cisco TelePresence Server on VM          | Version | 4.2(4.23)                        |
|                       | Cisco TelePresence Conductor             | Version | XC4.1                            |
|                       | Cisco TelePresence Server 7010           | Version | 4.2(4.23)                        |
| Wireless and Mobility | Wireless Access Point 1142               | Version | 15.3                             |

# コンポーネント一覧 (6)

| カテゴリ                   | コンポーネント                          |                        | バージョン   |
|------------------------|----------------------------------|------------------------|---|
| Messaging Applications | Cisco Jabber for Mac             | Version                | 11.1.0 (219067M)                                |
|                        | Cisco Jabber for Windows         | Version                | 11.1.0 (20345)                                  |
|                        | Cisco Jabber for iPhone and iPad | Version                | 11.1.1 (223653) - 32 bit (iPhone5 and iPad)     |
|                        |                                  |                        | 11.1.1 (223653) - 64 bit (iPhone6 and iPad Air) |
|                        |                                  | iPhone5                | Apple iOS 9.1 (13B143)                          |
|                        |                                  | iPhone6                | Apple iOS 9.1 (13B143)                          |
|                        | iPad                             | Apple iOS 9.1 (13B143) |   |
|                        | iPad Air                         | Apple iOS 9.2 (13C75)  |   |
|                        | Cisco Jabber for Android         | Version                | 11.1.1 (223288)                                 |
|                        |                                  | Galaxy S4              | Android OS 5.0.1                                |
| Xperia Z1              |                                  | Android OS 5.0.2       |   |

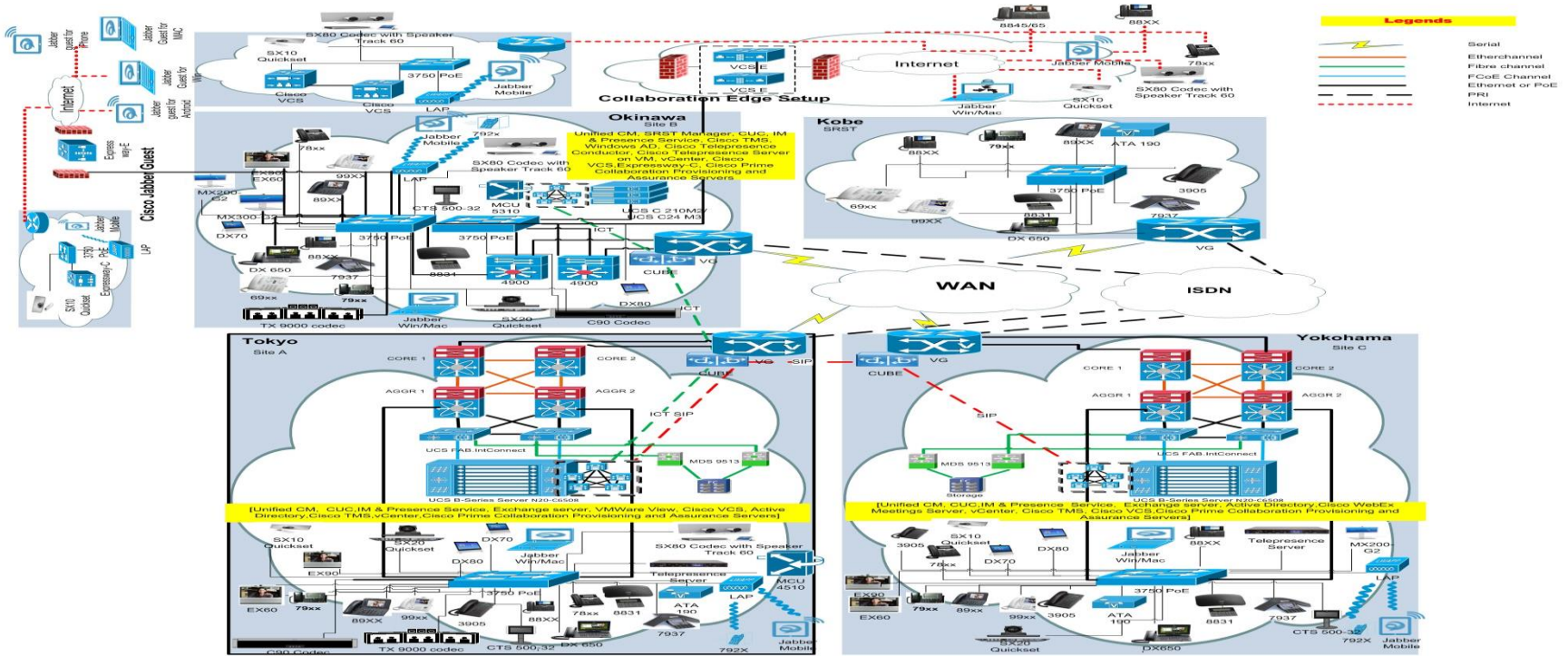
# コンポーネント一覧 (7)

| カテゴリ   | コンポーネント                         |                 | バージョン  |
|--------|---------------------------------|-----------------|--|
| UCS    | Fabric Interconnect PRIMARY     | Cisco UCS 6140  | 2.1(2a)  |
|        | Fabric Interconnect SUBORDINATE | Cisco UCS 6140  | 2.1(2a)  |
|        | Fabric Cluster                  | Cisco UCS 6140  | 2.1(2a)  |
|        | ESXi host                       | B-Series Server | ESXi 5.1.0   |
|        |                                 | C-Series Server | ESXi 5.5.0 and ESXi 6.0                                      |
| Client | Operating System                | Windows 7-SP1   | Windows 7-SP1 (Japanese)                                     |
|        |                                 | Windows 8/8.1   | Windows 8/8.1 (Japanese)                                     |
|        |                                 | Windows 10      | Windows 10 (Japanese)  |
|        |                                 | Mac             | 10.10.5  |
|        | Browser                         | IE              | IE 10, 11 (Supported Japanese language)                      |
|        |                                 | Mozilla         | Firefox 38, Firefox ESR 31, 38 (Supported Japanese language) |
|        |                                 | Chrome          | Chrome 43 or later (Supported Japanese language)             |

# コンポーネント一覧 (8)

| カテゴリ   | コンポーネント                  |  | バージョン  |
|--------|--------------------------|--|--|
| Server | Microsoft Windows Server |  | Windows Server 2008 (R2 Enterprise - Japanese) |
|        |                          |  | Windows Server 2012 (R2 Enterprise - Japanese) |

# テストポロジ



# テスト結果

| 対象コンポーネント                              | テスト項目数     | 合格数        | 不合格数     | 不具合数     |
|--|------------|------------|----------|----------|
| <b>Firmware Testing:</b>               |            |            |          |          |
| Cisco IP Phones                        | 60         | 60         | 0        | 0        |
| <b>Collaboration Edge:</b>             |            |            |          |          |
| Cisco IP Phones                        | 182        | 180        | 2        | 2        |
| Cisco Jabber for Windows               | 83         | 83         | 0        | 0        |
| Cisco Jabber for Mac                   | 67         | 67         | 0        | 0        |
| Cisco Jabber for Android               | 50         | 50         | 0        | 0        |
| Cisco Jabber for iPhone                | 50         | 50         | 0        | 0        |
| Cisco Jabber for iPad                  | 50         | 50         | 0        | 0        |
| Cisco CE Software                      | 230        | 230        | 0        | 0        |
| <b>Cisco Prime Collaboration:</b>      |            |            |          |          |
| Cisco Prime Collaboration Provisioning | 75         | 75         | 0        | 0        |
| Cisco Prime Collaboration Assurance    | 77         | 77         | 0        | 0        |
| Cisco Prime Collaboration Analytics    | 40         | 40         | 0        | 0        |
| <b>Total</b>                           | <b>964</b> | <b>962</b> | <b>2</b> | <b>2</b> |

# 不具合一覧

| SI.No                 | 不具合ID      | ステータス |
|-----------------------|------------|-------|
| <b>Cisco IP Phone</b> |            |       |
| 1                     | CSCuw95831 | New   |
| 2                     | CSCux35067 | New   |



# Cisco IP Phones

# CSCuw95831:After login to CE setup, "Successfully connected" string is not displayed (New/Sev3/Global)

Global

## Issue-Description:

- In 88xx and 78xx after login to Collaboration Edge the "Successfully connected" string is not displayed.

## Environment: Matrix:

- Unified CM Version: 11.0.1.20000-2
- Unified CM Locale: 11.0.1.1000-1
- 78xx Firmware version: sip78xx.11-0-1MN-167dev
- 88xx Firmware version: sip88xx.11-0-1MN-167dev

## Steps to Reproduce:

### Procedure:

- Add the IP Phone in Collaboration Edge setup
- Give the username and password
- Click signin
- Verify whether "Successfully connected" string is displayed

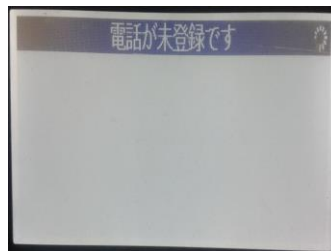
## Actual Behavior:

- After clicking the signin "Successfully connected" string is not displayed

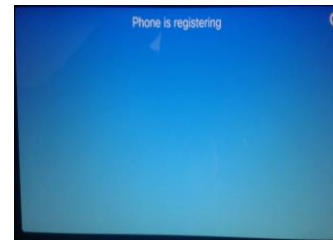
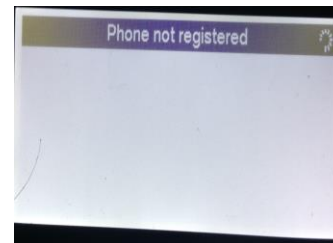
## Expected Behavior:

- After clicking the signin "Successfully connected" string need to be displayed

In JP Environment



In EN Environment



# CSCux35067 : In 78xx and 88xx, Directed call park BLF is working incorrectly (New/Sev3/Global)

Global

## Issue-Description:

- In 78xx and 88xx IP Phone, Parked or Park Number is displaying while calling to DCP BLF number in both English and Japanese Environment

## Environment: Matrix:

- Unified CM Version : 11.0.1.20000-2
- Unified CM Locale : 11.0.1.1000-1
- 78xx Firmware version : sip78xx.11-0-1-9
- 88xx Firmware version : sip88xx.11-0-1-9

## Steps to Reproduce:

### Procedure:

- In 78xx and 88xx, Configure the Directed Call park BLF .
- Dial DCP Directory Number in any 78xx or 88xx IP Phone.
- The IP Phone displayed like Park Number or Parked.

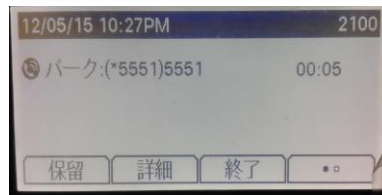
## Actual Behavior:

- If we press or call to DCP BLF number it should be in dead state no call is for parking but while calling to DCP number it display like "Park Number or Parked"

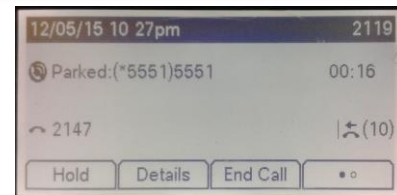
## Expected Behavior:

- If we press or call to DCP BLF number it should be in dead state (ie) it should not show the string like Park Number or Parked.

In JP Environment



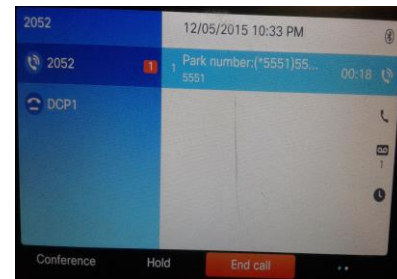
In EN Environment



In JP Environment



In EN Environment





**CISCO**

*TOMORROW starts here.*