



Test Results Summary for Cisco DNA Center Automation & Assurance (Release Version 2.3.6)

First Published: 2023-04-24

Last Modified: 2023-04-27

Americas Headquarters

Cisco Systems, Inc.
170 West Tasman Drive
San Jose, CA 95134-1706
USA
<http://www.cisco.com>
Tel: 408 526-4000
800 553-NETS (6387)
Fax: 408 527-0883



CONTENTS

CHAPTER 1

Overview 1

Cisco DNA Center test 2

CHAPTER 2

Test topology and Environment Matrix 7

Test Topology 8

Component Matrix 9

What's New ? 11

Open Caveats 12

Resolved Caveats 13

CHAPTER 3

New Features 15

Usability Improvement - Design Wireless page enhancements 16

Reusability of AP configurations config 18

MRE based EWLC HA Health Check and Troubleshooting 20

HA SSO Enhancements for DNAC 21

Dynamic DCA Channel validation 22

Support Clean Air for Access points 26

EA/Assurance 360 integration 28

HA support on assurance for WLC 30

Site Analytics - Phase 2 32

SWIM UI workflow upgrade 36

Long Term Reports 38

Individual AP maintenance mode 41

Allow clone/copy of existing RF profile in wireless design 45

Last seen timestamp on AP360 47

Assurance Issues 49

End Point Analytics and Device Classification	51
PoE visibility - AP Power Save Mode Distribution	53

CHAPTER 4**Regression Features 57**

Overall and Network Health Dashboard	59
Unique clients and users summary	63
Rolling AP Upgrade	65
Busiest AP	67
Open RRM Phase 2 - RF Simulator	69
Support scheduling of SSID broadcasting	71
AP Usage and Client Breakdown Report	76
Assurance workflow changes to support AP Refresh	78
Smart Licencing	79
All Data Report - Inventory and SWIM	81
3D Maps Enhancements Phase 2	83
Worst Interferer	86
Called Station ID	88
Support configuration of advanced WLAN parameters	91
Site 360/Dashboard Landing Page	93
Support for recurring discovery	95
Network Insights - Radio Insights based on Client Experience	97
Inventory: Support for Maintenance mode	99
AP Reboot for Troubleshooting	102
Busiest Client Report	104
Troubleshoot Certification - WLC Unmonitored	106
Support for Custom Policy Tag for C9800	109
Ability to manage multiple AP groups /Policy tags	112
Support AP refresh across different WLCs	113
Channel Change Report	114
Enhancements for mobility peer configuration	117
Support phase-2 Mesh configurations on wireless LAN controllers	120
Enable Multiple Anchor WLCs configuration for SSID	124
Support for manually disabling clients on wireless controller	126
Top N Site - SLA Dashboard - Client KPIs	127

Support tri radio configuration on Access Points	130
Support for CCKM configuration on SSID	133
Client Global Events viewer	137
Troubleshooting tab on AP-360	139
Channel Utilization Breakout	142
Issues correlation[AP-down issue]	144
Support custom WLAN profile configuration from DNAC	146
Pan Assurance event viewer (Phase - 3)	150
Network Services DHCP Failure Reasons	152
Multi WLC Support for MRE based client troubleshooting	154
Application experience for flex and fabric	156
Support AP Authorization (AAA) configuration from DNAC	158
Rogue report parity with Prime	161
Support configuration of advanced WLAN parameters (like CHD, others)	163
Support Custom AP Join Profile configurations including SSH, username credentials update from DNAC	165
Support Client Rate limiting configuration on SSID	167
Wireless Flexible Reports - Phase 1	169
Accessibility: Menu Navigation and Search Navigation	171
Ability to support power profile across APs from DNA Center	173
Client-360 Assurance enhancements	175
Config Wireless	177

CHAPTER 5
Related Documents 179

Related Documentation	180
-----------------------	-----



Overview

- [Cisco DNA Center test](#) , on page 2

Cisco DNA Center test

Cisco DNA Center test , an integral part of the enterprise wireless solution, is a program that validates various Cisco Wireless Products and Features. This is achieved by testing the latest versions of Cisco wireless products

Cisco DNA Center for Japan , in turn is an add-on testing at the solution level, where the requirements gathered are specific to Japanese usage and market. The requirements are derived based on the following:

- New features in DNA center 2.3.6
- High priority scenarios and basic regression features
- Inputs from Cisco SEs/ TAC

The test execution is carried out on selected Cisco Wireless LAN products, which affect the Japanese segment that are prioritized by Cisco Japan team.

The following products are covered in the test execution:

- Cisco Catalyst 9800 Series Wireless Controller
- Cisco Catalyst 9800-CL Wireless Controller for Cloud
- Cisco Embedded Wireless Controller on Catalyst Access Points
- Cisco DNA Center
- Cisco Spaces
- Cisco Spaces Connector
- Prime Infrastructure
- Identity Service Engine(VM)
- Cisco ISR 1100
- Cisco AP c9105
- Cisco AP c9115
- Cisco AP c9120
- Cisco AP c9130
- Cisco AP c9124
- Cisco AP c9164
- Cisco AP c9166
- Access Point 4800

Acronyms

Acronym	Description
AAA	Authentication Authorization and Accounting

Acronym	Description
ACL	Access Control List
ACS	Access Control Server
AKM	Authentication Key Management
API	Application Programming Interface
APIC-EM	Application Policy Infrastructure Controller - Enterprise Module
ATF	Air-Time Fairness
BLE	Bluetooth Low Energy
BYOD	Bring Your Own Device
CA	Central Authentication
CAC	Call Admissions Control
CAPWAP	Control and Provisioning of Wireless Access Point
CCN	Channel Change Notification
CCX	Cisco Compatible Extensions
CKIP	Cisco Key Integrity Protocol
CVBF	Cisco Vector Beam Forming
CWA	Central Web Authentication
DCA	Dynamic Channel Assignment
DMZ	Demilitarized Zone
DTIM	Delivery Traffic Indication Map
DSCP	Differentiated Services Code Point
DTLS	Datagram Transport Layer Security
EAP	Extensible Authentication Protocol
EULA	End User Licence Agreement
FLA	Flex Local Authentication
FLS	Flex Local Switching
FT	Fast Transition
FW	Firm Ware
H-REAP	Hybrid Remote Edge Access Point
IOS	Internetwork Operating System
ISR	Integrated Services Router
LAG	Link Aggregation
LEAP	Lightweight Extensible Authentication Protocol

Acronym	Description
LSS	Location Specific Services
LWAPP	Lightweight Access Point Protocol
MAP	Mesh Access Point
MCS	Modulation Coding Scheme
MFP	Management Frame Protection
mDNS	multicast Domain Name System
MIC	Message Integrity Check
MSE	Mobility Service Engine
MTU	Maximum Transmission Unit
NAC	Network Admission Control
NBAR	Network Based Application Recognition
NCS	Network Control System
NGWC	Next Generation Wiring closet
NMSP	Network Mobility Services Protocol
OEAP	Office Extended Access Point
PEAP	Protected Extensible Authentication Protocol
PEM	Policy Enforcement Module
PMF	Protected Management Frame
POI	Point of Interest
PPPoE	Point-to-Point Protocol over Ethernet
PSK	Pre-shared Key
QOS	Quality of service
RADIUS	Remote Authentication Dial-In User Service
RP	Redundancy Port
RRM	Radio Resource Management
SS	Spatial Stream
SSID	Service Set Identifier
SSO	Single Sign On
SSO	Stateful Switch Over
SWIM	Software Image Management
TACACS	Terminal Access Controller Access Control System
TLS	Transport Layer Security

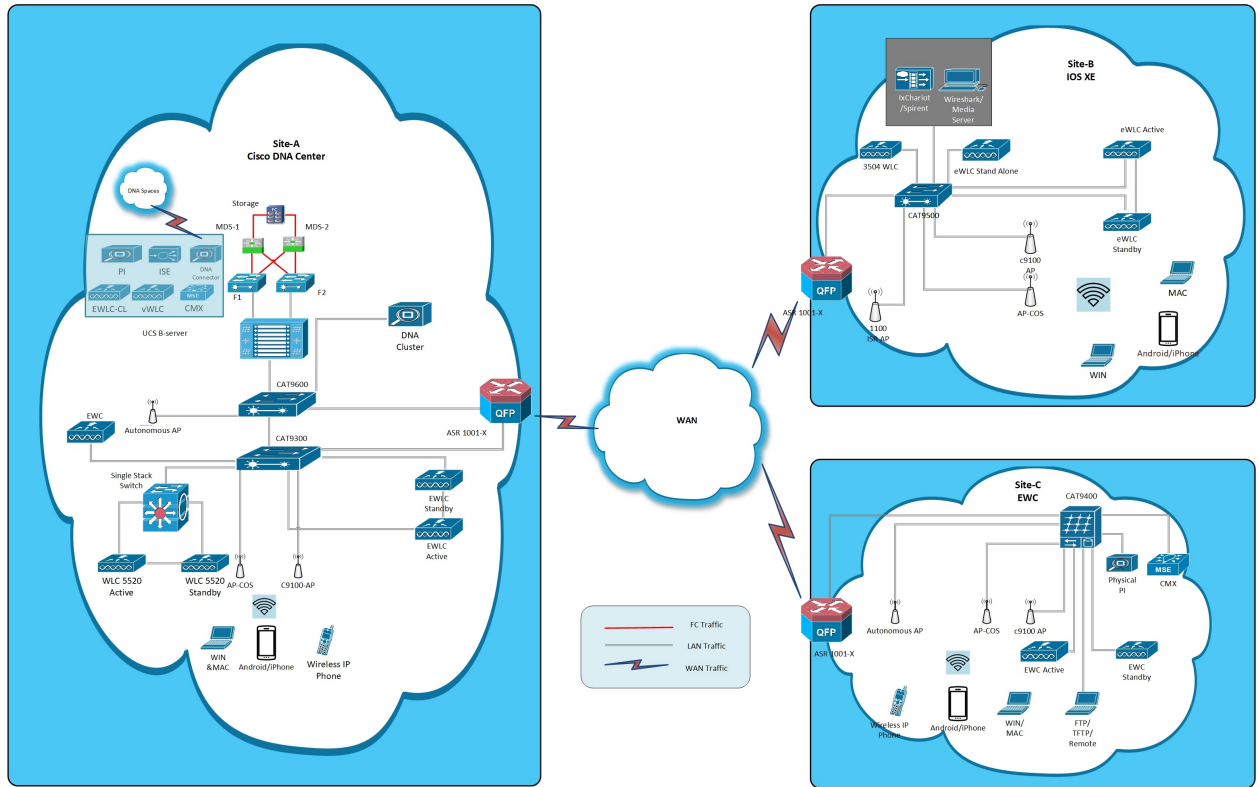
Acronym	Description
WEP	Wired Equivalent Privacy
WGB	Workgroup Bridge
WPA	Wi-Fi Protected Access
WSM	Wireless Security Module



Test topology and Environment Matrix

- [Test Topology, on page 8](#)
- [Component Matrix, on page 9](#)
- [What's New ?, on page 11](#)
- [Open Caveats, on page 12](#)
- [Resolved Caveats, on page 13](#)

Test Topology



Component Matrix

Category	Component	Version
Controller	Cisco Catalyst 9800-40 Wireless Controller	17.11
	Cisco Catalyst 9800-80 Wireless Controller	17.11
	Cisco Catalyst 9800-CL Wireless Controller for Cloud	17.11
	Cisco Catalyst 9800-L Wireless Controller	17.11
	Cisco Embedded Wireless Controller on Catalyst Access Points	17.11
	Virtual Controller	8.10.121.0
Applications	Cisco DNA Center	2.3.6
	Cisco Spaces	Cloud (Mar 2023)
	Cisco Spaces Connector	2.3.4 and 3.0
	Prime Infrastructure (Virtual Appliance, UCS based)	3.10
	ISE(VM)	3.2
	Cisco Jabber for Windows, iPhone	14.1.5
	Cisco Air Provisioning App	1.7.4
	Cisco Wireless App	1.1.113
Access Point	Cisco AP 9115	17.11
	Cisco AP 9120	17.11
	Cisco AP 9130	17.11
	Cisco AP 9105	17.11
	Cisco AP 9124	17.11
	Cisco AP 9166	17.11
	Cisco AP 9164	17.11
	Cisco 1100 ISR	17.11
	Cisco AP 4800	15.3
	Cisco AP 1810	15.3

Category	Component	Version	
Switch	Cisco Cat 9300	17.11	
	Cisco Cat 9200L	17.11	
	Cisco Cat 9800	17.11	
	Cisco 3750V2 switch	15.0(2)SE2	
	Cisco Cat 6509-E	15.1(1)SY1	
Chipset	5300, 6300 AGN	15.40.41.5058	
	7265 AC	21.40.2	
	Airport Extreme	7.9.1	
Client	Operating System(JOS)	Windows 10	
	Apple Mac Book Pro, Apple Mac Book Air (JP Locale)	Mac OS 13	
	iPad Pro	iOS 16	
	iPhone 6, 6S ,7 & 11 (JP Locale)	iOS 16	
	Samsung Galaxy S7,S10, Nexus 6P, Sony Xperia XZ	Android 13	
	Wireless IP Phone 8821	11.0.5	
	End points	Apple Mac 12.6.3	
		iPhone 6,6S ,7 & 11	
		Windows 10	
		Windows 11	
Samsung Galaxy S4, S7,S10, Nexus 6P, Sony Xperia			
Cisco AnyConnect VPN Client	4.10.05111		
MS surface GO	Windows 10 & 11		
Module	Hyper location Module	NA	
Active Directory	AD	Windows server 2022	
Call Control	Cisco Unified Communications Manager	12.5.0.99832-3/12.5.0.99832-3-1(JP)	
Browsers	IE	11.0	
	Mozilla Firefox	112.0.1	
	Safari	16.4.1	
	Chrome	112.0.5615.137	

What's New ?

DNA Center

- Usability Improvement - Design Wireless page enhancements
- Reusability of AP configurations config
- MRE based EWLC HA Health Check & Troubleshooting
- HA SSO Enhancements for DNAC
- Dynamic DCA Channel validation
- Support Clean Air for Access points
- EA/Assurance 360 integration
- HA support on assurance for WLC
- Site Analytics - Phase 2
- SWIM UI workflow upgrade
- Long Term Reports
- Individual AP maintenance mode
- Allow clone/copy of existing RF profile in wireless design
- Last seen timestamp on AP360
- Assurance Issues
- End Point Analytics and Device Classification
- PoE visibility - AP Power Save Mode Distribution

Open Caveats

Bug ID	Title
CSCwe84152	JA-Locale: Warning message is hidden due to misalignment- RF profile.
CSCwe26761	JA Locale: New Customizable Dashboard option is collapsed with another tabs
CSCwe31117	JA Locale:Assurance- health Applications export issue
CSCwe36352	JA Locale : Users and roles export issue
CSCwe36371	Assurance - Client page : New Customizable Dashboard Export dashboard issue
CSCwe98314	Overlap Issue in Time Range : Dashboard Library page
CSCwe91239	JA Locale : Custom Time range is showing while changing time range in Issues and events
CSCwe30392	Warning message is overlapping- Network Heirarchy
CSCwe32506	Table Settings Cancel or Apply is closing the devices details for Field Notices in Inventory
CSCwe26790	AP Power Savings and AP Power Save Mode Distribution preview image is not showing
CSCwe29479	JA Locale: Edit Table Columns some fields are showing blank for Client Devices
CSCwe89323	Telemetry Report is getting Failed in Generated Reports
CSCwe95678	Getting an error message while adding devices in inventory page

Resolved Caveats

Bug ID	Title
CSCwe47303	Workflow: Configure Access points-Task name issue
CSCwe52111	Network Hierarchy page is loading only while Exporting Maps
CSCwe26807	Tools ->Topology ->Export Topology is not working
CSCwe36336	Tools > Topology Page : Take a tour is not working
CSCwe83032	DNAC>>Assurance>>Issue Settings>> Not able to change sites for Custom Profile
CSCwe91345	Search text overlapped in reboot device task
CSCwe56562	Utilization score of device is getting misplaced if navigated from Assurance pages
CSCwe32063	Unable to Click on Assign option in Inventory Page
CSCwe36363	JA Locale - POE dashboard showing Custom time range for 3hr/24hr/7days
CSCwe32522	JA locale : Issues-Assurance shows custom time range when reset to current time
CSCwe89332	Enabling Licence Status make the page load forever
CSCwe28434	Blank space is showing for Device Name in Field Notices
CSCwe39199	Getting Blank Page While Checking Collector Details in Firefox
CSCwe91176	Schedule Maintenance Mode stopped while selecting 'End date' option in maintenance wizard
CSCwe36368	POE Dashboard - Site Export is not properly exported
CSCwe29461	DNAC>>Provision>>Inventory page>> "See Details" is not working
CSCwe32534	JA Locale : Events-Assurance Time range issue
CSCwe55103	Assurance Dashboard under AI Analytics shows no page except Site Analytics
CSCwe56833	Standalone EWC Shown as HA in DNAC
CSCwe28412	JA Locale: Getting an undefined error message while checking for Power Profiles
CSCwe36343	Customize Wireless Settings Dashboard issue
CSCwe36435	While Generating a New Report Scroll bar option is Not Working Properly

CSCwe26744	Unable to get WLC Info details for Unified AP
CSCwe27965	Help document is showing an error for Inventory page
CSCwe32263	Showing error message while adding Network device in Inventory
CSCwe53234	Assurance >> Client page >> Filter option issue
CSCwe70263	Overlapping issue found at Usability Improvement design page
CSCwe91239	JA Locale : Custom Time range is showing while changing time range in Issues and events



New Features

- Usability Improvement - Design Wireless page enhancements, on page 16
- Reusability of AP configurations config, on page 18
- MRE based EWLC HA Health Check and Troubleshooting, on page 20
- HA SSO Enhancements for DNAC , on page 21
- Dynamic DCA Channel validation, on page 22
- Support Clean Air for Access points , on page 26
- EA/Assurance 360 integration, on page 28
- HA support on assurance for WLC, on page 30
- Site Analytics - Phase 2, on page 32
- SWIM UI workflow upgrade, on page 36
- Long Term Reports , on page 38
- Individual AP maintenance mode, on page 41
- Allow clone/copy of existing RF profile in wireless design, on page 45
- Last seen timestamp on AP360, on page 47
- Assurance Issues, on page 49
- End Point Analytics and Device Classification, on page 51
- PoE visibility - AP Power Save Mode Distribution, on page 53

Usability Improvement - Design Wireless page enhancements

Logical ID	Title	Description	Status	Defect ID
DNACJ236S_UIDW_1	Check whether able to track new design wireless elements	To Check whether able to track new design wireless elements	Passed	CSCwe52111
DNACJ236S_UIDW_2	Check whether able to edit the dashboard from settings	To check whether able to edit dashboard from settings.	Passed	
DNACJ236S_UIDW_3	Check whether able to drag and drop the setting to prioritize them.	To check whether able to drag and drop the setting to prioritize them.	Passed	CSCwe70263
DNACJ236S_UIDW_4	Check whether able to drag and drop and click reset settings	To Check whether able to drag and drop and click reset settings	Passed	
DNACJ236S_UIDW_5	Check whether able to drag Anchor Groups as first priority	To Check whether able to drag Anchor Groups as first priority	Passed	
DNACJ236S_UIDW_6	Check whether able to drag SSID and RF Profiles as first & second priority	To Check whether able to drag SSID and RF Profiles as first & second priority	Passed	
DNACJ236S_UIDW_7	Check whether able to drag Interfaces & VLAN groups and Power Profile as first and second priority	To Check whether able to drag Interfaces & VLAN groups and Power Profile as first and second priority	Passed	
DNACJ236S_UIDW_8	Check whether able to drag Flex Connect settings and Security Settings	To Check whether able to drag Flex Connect settings and Security Settings	Passed	

DNACJ236S_UIDW_9	Check whether able to drag Antenna Radio profiles and AP profiles as first and second priority	To Check whether able to drag Antenna Radio profiles and AP profiles as first and second priority	Passed	
DNACJ236S_UIDW_10	Check whether able to configure SSID	To Check whether able to configure SSID	Passed	
DNACJ236S_UIDW_11	Check whether able to configure RF Profile	To Check whether able to configure RF Profile	Passed	
DNACJ236S_UIDW_12	Check whether able to configure Anchor Groups	To Check whether able to configure Anchor Groups	Passed	
DNACJ236S_UIDW_13	Check whether able to configure Flex connect Settings	To Check whether able to configure Flex connect Settings	Passed	
DNACJ236S_UIDW_14	Check whether able to configure AP Profiles	To Check whether able to configure AP Profiles	Passed	
DNACJ236S_UIDW_15	Check whether able to configure Power Profiles	To Check whether able to configure Power Profiles	Passed	
DNACJ236S_UIDW_16	Check whether able to configure Antenna Radio Profiles	To Check whether able to configure Antenna Radio Profiles	Passed	
DNACJ236S_UIDW_17	Check whether able to configure Interfaces & VLAN Groups	To Check whether able to configure Interfaces & VLAN Groups	Passed	
DNACJ236S_UIDW_18	Check whether able to configure Security Settings	To Check whether able to configure Security Settings	Passed	
DNACJ236S_UIDW_19	Check whether able to track the site on each site	To Check whether able to track the site on each site	Passed	

Reusability of AP configurations config

Logical ID	Title	Description	Status	Defect ID
DNACI236S_RAPCC_1	Create Reusable Template	To verify whether Reusable Template is created or not	Passed	CSCwe47303
DNACI236S_RAPCC_2	Configure AP Parameters Using existing Templates	To Configure AP Parameters Using existing Templates	Passed	
DNACI236S_RAPCC_3	Delete Existing Template	Verify whether your able to Delete Existing Template or not	Passed	
DNACI236S_RAPCC_4	Delete bulk Existing Templates	Verify whether your able to Delete bulk Existing Templates or not	Passed	
DNACI236S_RAPCC_5	Verify Create/Update/May be Later options	To verify that details configured in the Reusable Template page are retained after switching between Create/Update/May be Later options	Passed	
DNACI236S_RAPCC_6	Verify that the Create template checkbox is greyed out/unavailable for selection	To verify that the Create template checkbox is greyed out/unavailable for selection when all the AP/Radio configuration steps are unselected	Passed	
DNACI236S_RAPCC_7	Validate the summary page content for all three template creation options	To validate the summary page content for all three template creation options - Create/Update/May be later	Passed	
DNACI236S_RAPCC_8	Verify the warning message when multiple templates are selected from Template List table	To verify the warning message when multiple templates are selected from Template List table	Passed	

DNACJ236S_RAPCC_9	Verify the Template details are displayed properly while clicking the template name in the table	To verify the Template details are displayed properly while clicking the template name in the table	Passed	
DNACJ236S_RAPCC_10	Validate the Template Name for maximum characters(32), duplicates and special characters	To validate the Template Name for maximum characters(32), duplicates and special characters	Passed	
DNACJ236S_RAPCC_11	Verify that the details configured in the Reusable Template page are retained after Exit and Resume	To verify that the details configured in the Reusable Template page are retained after Exit and Resume	Passed	
DNACJ236S_RAPCC_12	Validate 'How do you want to configure APs?' section content while reusing an existing template	To validate 'How do you want to configure APs?' section content while reusing an existing template	Passed	
DNACJ236S_RAPCC_13	Verify the functionality when 'Later' option is opted in the new template creation flow	To verify the functionality when 'Later' option is opted in the new template creation flow	Passed	
DNACJ236S_RAPCC_14	Verify Template creation/updation/deletion logs in Audit logs	To verify Template creation/updation/deletion logs in Audit logs	Passed	
DNACJ236S_RAPCC_15	Verify applying the template created with AP mode as sniffer	To verify applying the template created with AP mode as sniffer	Passed	
DNACJ236S_RAPCC_16	Verify running the workflow by re-using existing templates for different set of AP models	To verify running the workflow by re-using existing templates for different set of AP models	Passed	
DNACJ236S_RAPCC_17	Verify applying a template with 6GHZ Radio configurations to a non 6GHZ AP model and vice versa	To verify applying a template with 6GHZ Radio configurations to a non 6GHZ AP model and vice versa	Passed	

MRE based EWLC HA Health Check and Troubleshooting

Logical ID	Title	Description	Status	Defect ID
DNACJ236S_HAMRE_1	Manage network devices in DNAC using Inventory & PNP flow	To manage network devices in DNAC using Inventory & PNP flow	Passed	
DNACJ236S_HAMRE_2	Check MRE status for HA device	To check MRE status for HA device	Passed	
DNACJ236S_HAMRE_3	Check MRE status for standalone controller	To check MRE status for standalone device	Passed	
DNACJ236S_HAMRE_4	Check MRE status for HA device after switchover	To check MRE status for HA device after switchover	Passed	
DNACJ236S_HAMRE_5	MRE stats for existing HA device	To check MRE stats for existing HA device	Passed	
DNACJ236S_HAMRE_6	MRE stats for existing EWC HA device	To check MRE stats for existing EWC HA device	Passed	
DNACJ236S_HAMRE_7	MRE stats for EWC device	To check MRE stats for EWC device	Passed	CSCwe39199
DNACJ236S_HAMRE_8	Check MRE status for 9800L HA device	To check MRE status for 9800L HA device	Passed	
DNACJ236S_HAMRE_9	Check MRE status for 9800CL HA device	To check MRE status for 9800CL HA device	Passed	

HA SSO Enhancements for DNAC

Logical ID	Title	Description	Status	Defect ID
DNACJ236S_HAE_1	Manage network devices in DNAC using Inventory & PNP flow	To manage network devices in DNAC using Inventory & PNP flow	Passed	CSCwe32263
DNACJ236S_HAE_2	Pair HA device using DNAC	To perform HA pairing using DNAC	Passed	
DNACJ236S_HAE_3	Add existing HA device to DNAC	To check and add existing HA device to DNAC	Passed	
DNACJ236S_HAE_4	Unpair the HA device using DNAC	To check if unpairing occurs using DNAC	Passed	CSCwe32063
DNACJ236S_HAE_5	Check configure WLC HA option for standalone eWLC	To check configure WLC HA option for standalone eWLC	Passed	
DNACJ236S_HAE_6	Configure WLC HA option using incorrect IP address	To configure WLC HA option using incorrect IP address	Passed	
DNACJ236S_HAE_7	Pair 9800CL HA device using DNAC	To pair 9800CL HA device using DNAC	Passed	
DNACJ236S_HAE_8	Check HA pairing for existing HA device	To check HA pairing for existing HA device	Passed	
DNACJ236S_HAE_9	Try configure WLC HA option using EWC	To try configure WLC HA option using EWC	Passed	
DNACJ236S_HAE_10	Try configure WLC HA option using EWC HA device	To try configure WLC HA option using EWC HA device	Passed	
DNACJ236S_HAE_11	Try configuring different models of EWLC as HA	To try configuring different models of EWLC as HA	Passed	
DNACJ236S_HAE_12	Try configuring EWLC with different versions as HA	To try configuring EWLC with different versions as HA	Passed	CSCwe56833

Dynamic DCA Channel validation

Logical ID	Title	Description	Status	Defect ID
DNACI236S_DCA_1	Check Whether Rf profile can be created in DNAC or not	To check Whether Rf profile can be created in DNAC or not	Passed	
DNACI236S_DCA_2	Create a site/Building/floor in map on India location	To create a site/Building/floor in map on India location	Passed	
DNACI236S_DCA_3	Create a RF profile with all the available channel	To create a RF profile with all the available channel and check whether the profile is created or not	Passed	CSCwe36343
DNACI236S_DCA_4	Provision the created RF Profile to AP assigned in India location	To provision the created RF Profile to AP assigned in India location and check for valid and invalid channels	Passed	
DNACI236S_DCA_5	Provision the valid RF Profile to AP assigned in India location	To create a RF Profile with only Valid Channels and Provision the valid RF Profile to AP assigned in India location and check the status of AP provision	Passed	
DNACI236S_DCA_6	Provision the valid/invalid RF Profile to AP assigned in India location	To create a RF Profile with few Valid and few invalid Channels and Provision the valid/invalid RF Profile to AP assigned in India location and check the status of AP provision	Passed	
DNACI236S_DCA_7	Provision the invalid RF Profile to AP assigned in India location	To create a RF Profile with only invalid Channels and Provision the invalid RF Profile to AP assigned in India location and check the status of AP provision	Passed	
DNACI236S_DCA_8	Create a site/Building/floor in map on Japan location	To create a site/Building/floor in map on Japan location	Passed	

DNACI236S_DCA_9	Provision the created all channel RF Profile to AP assigned in Japan location	To provision the created RF Profile to AP assigned in Japan location and check for valid and invalid channels	Passed	
DNACI236S_DCA_10	Provision the valid RF Profile to AP assigned in Japan location	To create a RF Profile with only Valid Channels and Provision the valid RF Profile to AP assigned in Japan location and check the status of AP provision	Passed	
DNACI236S_DCA_11	Provision the valid/invalid RF Profile to AP assigned in Japan location	To create a RF Profile with few Valid and few invalid Channels and Provision the valid/invalid RF Profile to AP assigned in Japan location and check the status of AP provision	Passed	
DNACI236S_DCA_12	Provision the invalid RF Profile to AP assigned in Japan location	To create a RF Profile with only invalid Channels and Provision the invalid RF Profile to AP assigned in Japan location and check the status of AP provision	Passed	
DNACI236S_DCA_13	Create a site/Building/floor in map on USA location	To create a site/Building/floor in map on USA location	Passed	
DNACI236S_DCA_14	Provision the created all channel RF Profile to AP assigned in USA location	To provision the created RF Profile to AP assigned in USA location and check for valid and invalid channels	Passed	
DNACI236S_DCA_15	Provision the valid RF Profile to AP assigned in USA location	To create a RF Profile with only Valid Channels and Provision the valid RF Profile to AP assigned in USA location and check the status of AP provision	Passed	
DNACI236S_DCA_16	Provision the valid/invalid RF Profile to AP assigned in USA location	To create a RF Profile with few Valid and few invalid Channels and Provision the valid/invalid RF Profile to AP assigned in USA location and check the status of AP provision	Passed	

DNACI236S_DCA_17	Provision the invalid RF Profile to AP assigned in USA location	To create a RF Profile with only invalid Channels and Provision the invalid RF Profile to AP assigned in USA location and check the status of AP provision	Passed	
DNACI236S_DCA_18	Check the same set of Test cases for other countries also	To check the same set of Test cases for other countries by adding site on those countries and check for RF provision	Passed	
DNACI236S_DCA_19	Check client behaviour when connected to 9105 AP	To connect different types of client with 9105 AP after provision from DNAC and to check client behaviour	Failed	CSCwe31117
DNACI236S_DCA_20	Check client behaviour when connected to 9115 AP	To connect different types of client with 9115 AP after provision from DNAC and to check client behaviour	Passed	
DNACI236S_DCA_21	Check client behaviour when connected to 9120 AP	To connect different types of client with 9120 AP after provision from DNAC and to check client behaviour	Failed	CSCwe36371
DNACI236S_DCA_22	Check client behaviour when connected to 9130 AP	To connect different types of client with 9130 AP after provision from DNAC and to check client behaviour	Passed	
DNACI236S_DCA_23	Check client behaviour when connected to 9124 AP	To connect different types of client with 9124 AP after provision from DNAC and to check client behaviour	Passed	
DNACI236S_DCA_24	Check client behaviour when connected to 9164 AP	To connect different types of client with 9164 AP after provision from DNAC and to check client behaviour	Passed	
DNACI236S_DCA_25	Check client behaviour when connected to 9166 AP	To connect different types of client with 9166 AP after provision from DNAC and to check client behaviour	Passed	
DNACI236S_DCA_26	Check client behaviour on EWC	To connect different types of client with EWC AP after provision from DNAC and to check client behaviour	Passed	

DNAC1236S_DCA_27	Intra roam client and check the client behaviour	To Intra roam client between 2 controllers with different channel assignment and check the client behaviour	Passed	
DNAC1236S_DCA_28	Change Channel width of the Radio and check the Client Behaviour	To Change Channel width of the Radio 20MHz/40MHz/80MHz/160MHz and check the Client Behaviour	Passed	

Support Clean Air for Access points

Logical ID	Title	Description	Status	Defect ID
DNACJ236S_SCA_1	Preview the CLI & enabling CleanAir for band specific 2.4 Ghz for 17.9.x above image	To preview the CLI & enabling clean air for band specific for 2.4 Ghz and verify for 17.9.x above AP image	Passed	
DNACJ236S_SCA_2	Preview the CLI & enabling CleanAir for band specific 5 Ghz for 17.9.x above image	To preview the CLI & enabling clean air for band specific for 5 Ghz and verify for 17.9.x above AP image	Passed	
DNACJ236S_SCA_3	Preview the CLI & enabling CleanAir for band specific 6 Ghz for 17.9.x above image	To preview the CLI & enabling clean air for band specific for 6 Ghz and verify for 17.9.x above AP image	Passed	
DNACJ236S_SCA_4	Preview the CLI & disabling CleanAir for band specific 2.4 Ghz for 17.9.x above image	To preview the CLI & disabling clean air for band specific for 2.4 Ghz and verify for 17.9.x above AP image	Passed	
DNACJ236S_SCA_5	Preview the CLI & disabling CleanAir for band specific 5 Ghz for 17.9.x above image	To preview the CLI & disabling clean air for band specific for 5 Ghz and verify for 17.9.x above AP image	Passed	
DNACJ236S_SCA_6	Preview the CLI & disabling CleanAir for band specific 6 Ghz for 17.9.x above image	To preview the CLI & disabling clean air for band specific for 6 Ghz and verify for 17.9.x above AP image	Passed	
DNACJ236S_SCA_7	Preview the CLI & enabling CleanAir for slot specific for 2.4 Ghz for 17.9.x below image	To preview the CLI & enabling CleanAir for slot specific for 2.4 Ghz and verify for 17.9.x below AP image	Passed	

DNACJ236S_SCA_8	Preview the CLI & enabling CleanAir for slot specific for 6 Ghz for 17.9.x below image	To preview the CLI & enabling CleanAir for slot specific for 6 Ghz and verify for 17.9.x below AP image	Passed	
DNACJ236S_SCA_9	Preview the CLI & enabling CleanAir for slot specific for 5 Ghz for 17.9.x below image	To preview the CLI & enabling CleanAir for slot specific for 5 Ghz and verify for 17.9.x image	Passed	
DNACJ236S_SCA_10	Preview the CLI & disabling CleanAir for slot specific for 2.4 ghz for 17.9.x below image	To preview the CLI & disabling CleanAir for slot specific for 2.4 ghz and verify for 17.9.x image	Passed	
DNACJ236S_SCA_11	Preview the CLI & disabling CleanAir for slot specific for 5 Ghz for 17.9.x below image	To preview the CLI & disabling CleanAir for slot specific for 5 Ghz and verify for 17.9.x image	Passed	
DNACJ236S_SCA_12	Preview the CLI & disabling CleanAir for slot specific for 6 ghz for 17.9.x below image	To preview the CLI & disabling CleanAir for slot specific for 6 ghz and verify for 17.9.x image	Passed	
DNACJ236S_SCA_13	Preview the CLI for slot specific for Dual band for 17.9.x below image	To preview the CLI for slot specific for Dual band and verify for 17.9.x image	Passed	
DNACJ236S_SCA_14	Check whether CleanAir is enable/disable for band specific in Activities	To check whether CleanAir is enable/disable for band specific in Activities	Passed	
DNACJ236S_SCA_15	Check whether CleanAir is enable/disable for band specific in View device details	To check whether CleanAir is enable/disable for band specific in View device details	Passed	

EA/Assurance 360 integration

Logical ID	Title	Description	Status	Defect ID
DNACJ236S_EA360_1	Check AI endpoint installed or not	To check AI endpoint Analytics installed or not	Passed	
DNACJ236S_EA360_2	Check the trust score in for wireless clients	To check the trust score in wireless clients	Passed	CSCwe53234
DNACJ236S_EA360_3	Check the trust score for wired clients	To check the trust score in wired clients	Passed	CSCwe32534
DNACJ236S_EA360_4	Check hardware manufacturer for wired clients	To check the hardware manufacturer in wired clients in client 360	Passed	
DNACJ236S_EA360_5	Check hardware manufacturer for wireless clients	To check the hardware manufacturer in wireless clients in client 360	Passed	
DNACJ236S_EA360_6	Check Device Type for wireless clients	To check the Device type in wireless clients in client 360	Passed	
DNACJ236S_EA360_7	Check Device Type for wired clients	To check the Device type in wired clients in client 360	Passed	
DNACJ236S_EA360_8	Check If any changes are in EA	If any changes are in EA, check Assurance also changing accordingly or not for wireless clients	Passed	CSCwe28434
DNACJ236S_EA360_9	Check Assurance client details for global	To Check Assurance client details for global	Passed	
DNACJ236S_EA360_10	Check Assurance client details for any Particular location	To Check Assurance client details for particular location	Passed	

DNACJ236S_EA360_11	Check Assurance client details for Time range	To Check Assurance client details for Time range as 3 hours	Passed	
DNACJ236S_EA360_12	Check Assurance client details for Time range	To Check Assurance client details for Time range as 24 hours	Passed	
DNACJ236S_EA360_13	Check Assurance client details for Time range	To Check Assurance client details for Time range as 7 days	Passed	
DNACJ236S_EA360_14	Check Assurance client details for different SSID	To Check Assurance client details for different SSID	Passed	
DNACJ236S_EA360_15	Check Assurance client details for all SSID	To Check Assurance client details for all SSID	Passed	
DNACJ236S_EA360_16	Check Assurance client details for different Bands	To Check Assurance client details for different Bands	Passed	
DNACJ236S_EA360_17	Check Assurance client details with windows	To Check Assurance client details with windows client	Passed	CSCwe29461
DNACJ236S_EA360_18	Check Assurance client details with Android	To Check Assurance client details with Android client	Passed	
DNACJ236S_EA360_19	Check Assurance client details with Mac	To Check Assurance client details with Mac client	Passed	

HA support on assurance for WLC

Logical ID	Title	Description	Status	Defect ID
DNACJ236S_HAWLC_1	Check whether the HA support device is added in DNAC	To check the HA device is added in DNAC	Passed	
DNACJ236S_HAWLC_2	Check whether the HA device details shown in DNAC	To Check weather the HA device details shown in DNAC Correctly	Passed	CSCwe26807, CSCwe36336, CSCwe89332
DNACJ236S_HAWLC_3	Check the HA Provisioned device details are shown device 360 page in DNAC	To Check weather the HA device details shown in DNAC Correctly in device 360 page	Passed	
DNACJ236S_HAWLC_4	Configure HA setup using RP option and check details in DNAC	To configure HA setup using RP option and check details in DNAC	Passed	
DNACJ236S_HAWLC_5	Validate the HA RMI parameters and notice in DNAC	To validate the HA RMI parameters and notice parameter in DNAC	Passed	
DNACJ236S_HAWLC_6	Force-switchover to verify HA RMI behaviour	Force-switchover to verify HA RMI behaviour	Passed	
DNACJ236S_HAWLC_7	Check the HA switch over issue in DNAC device 360 page	To check the HA switchover issue in DNAC device 360 page	Passed	
DNACJ236S_HAWLC_8	Check while HA switchover issue reason code is changed to string	To Check HA switchover issue reason code is changed to string	Passed	
DNACJ236S_HAWLC_9	Check the HA device details in Device detail information tab in 360 page	To Check the HA device details in Device detail information tab in 360 page	Passed	
DNACJ236S_HAWLC_10	Check Windows client is Connected to HA device and verify client details in Assurance	To Check Windows client is Connected to HA device and verify client details in Assurance	Passed	

DNACJ236S_HAWLC_11	Check Android client is Connected to HA device and verify client details in Assurance	To Check Android client is Connected to HA device and verify client details in Assurance	Passed	
DNACJ236S_HAWLC_12	Check MAC client is Connected to HA device and verify client details in Assurance	To Check MAC client is Connected to HA device and verify client details in Assurance	Passed	
DNACJ236S_HAWLC_13	verify client details are updating in Assurance page or not while Client roaming from HA setup to other WLC	verify client details are updating in Assurance page or not while Client roaming from HA setup to other WLC	Passed	
DNACJ236S_HAWLC_14	Check Windows/Android/Mac clients are connected to HA Switchover device	To Check Windows/Android/Mac clients are connected to HA Switchover device	Passed	

Site Analytics - Phase 2

Logical ID	Title	Description	Status	Defect ID
DNACJ236S_Site_1	Values for Coverage, Connection speed of the Overall Health Page for 24 hrs	To verify the values for Coverage, Connection speed of the Overall Health Page for 24 hrs	Passed	
DNACJ236S_Site_2	Values for Coverage, Connection speed of the Overall Health Page for 7 days	To verify the values for Coverage, Connection speed of the Overall Health Page for 7 days	Passed	CSCwe55103
DNACJ236S_Site_3	Values for Coverage, Connection speed of the Overall Health Page for 3 hrs	To verify the values for Coverage, Connection speed of the Overall Health Page for 3 hrs	Passed	
DNACJ236S_Site_4	Values for Onboarding & roaming attempts and duration of the Overall Health Page for 3 hrs	To verify the values for Onboarding & roaming attempts and duration of the Overall Health Page for 3 hrs	Passed	
DNACJ236S_Site_5	Values for Onboarding & roaming attempts and duration of the Overall Health Page for 24 hrs	To verify the values for Onboarding & roaming attempts and duration of the Overall Health Page for 24 hrs	Passed	CSCwe26744
DNACJ236S_Site_6	Values for Onboarding & roaming attempts and duration of the Overall Health Page for 7 days	To verify the values for Onboarding & roaming attempts and duration of the Overall Health Page for 7 days	Passed	
DNACJ236S_Site_7	Values for Coverage, and Connection speed on the Overall Health Page for previous day -3 hrs	To verify values for Coverage, and Connection speed on the Overall Health Page for previous day -3 hrs	Passed	

DNACJ236S_Site_8	Values for Coverage, and Connection speed on the Overall Health Page for previous day -24 hrs	To verify values for Coverage, and Connection speed on the Overall Health Page for previous day -24 hrs	Passed	
DNACJ236S_Site_9	Values for Coverage, and Connection speed on the Overall Health Page for previous day -7 days	To verify values for Coverage, and Connection speed on the Overall Health Page for previous day -7 days	Passed	
DNACJ236S_Site_10	Values for Onboarding roaming attempts and duration of the Overall Health Page for previous day- 7 days	To verify values for Onboarding roaming attempts and duration of the Overall Health Page for previous day- 7 days	Passed	
DNACJ236S_Site_11	Values for Onboarding roaming attempts and duration of the Overall Health Page for previous day- 3 hrs	To verify values for Onboarding roaming attempts and duration of the Overall Health Page for previous day- 3 hrs	Passed	
DNACJ236S_Site_12	Values for Onboarding roaming attempts and duration of the Overall Health Page for previous day- 24 hrs	To verify values for Onboarding roaming attempts and duration of the Overall Health Page for previous day- 24 hrs	Passed	
DNACJ236S_Site_13	Check whether the Site type as hierarchy is showing different client KPI values	To check whether the Site type as hierarchy is showing different client KPI values	Passed	
DNACJ236S_Site_14	Check whether the Site type as Building is showing different client KPI values	To check whether the Site type as Building is showing different client KPI values	Passed	

DNACJ236S_Site_15	Check whether the Count as Client Count is showing different client KPI values	To check whether the Count as Client Count is showing different client KPI values	Passed	
DNACJ236S_Site_16	Check whether the Count as AP Count is showing different client KPI values	To check whether the Count as AP Count is showing different client KPI values	Passed	
DNACJ236S_Site_17	Site Matrix KPI % values for 7 days on the Site Analytics Map	To view Site Matrix KPI % values for 7 days on the Site Analytics Map	Passed	
DNACJ236S_Site_18	Site Matrix KPI % values for Previous 3 hrs on the Site Analytics Map	To view Site Matrix KPI % values for Previous 3 hrs on the Site Analytics Map	Passed	
DNACJ236S_Site_19	Site Matrix KPI % values for Previous 24 hrs on the Site Analytics Map	To view Site Matrix KPI % values for Previous 24 hrs on the Site Analytics Map	Passed	
DNACJ236S_Site_20	Site Matrix KPI % values for Previous 7 days on the Site Analytics Map	To view Site Matrix KPI % values for Previous 7 days on the Site Analytics Map	Passed	
DNACJ236S_Site_21	Metric violations count for KPI % values on the Site Analytics Map	To view metric violations count for KPI % values on the Site Analytics Map	Passed	
DNACJ236S_Site_22	Color Scheme for KPI % values on the Site Analytics Map	To view Color Scheme for KPI % values on the Site Analytics Map	Passed	
DNACJ236S_Site_23	Check whether Info Icons on the Site Analytics Map is shown correct	To check whether Info Icons on the Site Analytics Map is shown correct	Passed	
DNACJ236S_Site_24	View Site Analytics Link on the Site Analytics section of the Overall Health Page	To view Site Analytics Link on the Site Analytics section of the Overall Health Page	Passed	

DNACJ236S_Site_25	Info Icons on the Site Analytics section of the Overall Health Page	To view the Info Icons on the Site Analytics section of the Overall Health Page	Passed	
DNACJ236S_Site_26	Site Matrix KPI % values for 24 hrs on the Site Analytics Map	To view Site Matrix KPI % values for 24 hrs on the Site Analytics Map	Passed	
DNACJ236S_Site_27	Site Matrix KPI % values for 3 hrs on the Site Analytics Map	To view Site Matrix KPI % values for 3 hrs on the Site Analytics Map	Passed	

SWIM UI workflow upgrade

Logical ID	Title	Description	Status	Defect ID
DNACJ236S_SwimUI_1	Verify Task Name screen and Task Name Validation	To verify Task Name screen and Task name	Passed	
DNACJ236S_SwimUI_2	Verify workflow progress, Next and Exit Button for Image Update	To verify workflow progress, Next and Exit Button for Image Update	Passed	
DNACJ236S_SwimUI_3	Importing a image from a device	To check if the images gets imported from the device or not	Passed	
DNACJ236S_SwimUI_4	Importing the image through the URL	To import the image using URL and check if the images gets imported or not.	Passed	
DNACJ236S_SwimUI_5	Import the Invalid image from a device	To import the wrong image using device and check if the images gets imported or not.	Passed	
DNACJ236S_SwimUI_6	Mark multiple images as golden image	To Mark multiple images as golden image	Passed	
DNACJ236S_SwimUI_7	Verify Software Distribution for now	To verify Software Distribution for now	Passed	
DNACJ236S_SwimUI_8	Schedule Software Distribution	To Schedule Software Distribution	Passed	
DNACJ236S_SwimUI_9	Verify Software Activation After Distribution for Now	To verify Software Activation After Distribution for Now	Passed	
DNACJ236S_SwimUI_10	Schedule Software Activation After Distribution	To Schedule Software Activation After Distribution	Passed	
DNACJ236S_SwimUI_11	Verify Distribution is triggered or not	To verify Distribution is triggered or not	Passed	

DNACJ236S_SwimUI_12	Verify Distribution is triggered or not for multiple devices	To verify Distribution is triggered or not for multiple devices	Passed	
DNACJ236S_SwimUI_13	Verify Unpack Images status	To verify Unpack Image status	Passed	
DNACJ236S_SwimUI_14	Verify AP Pre image Download status	To verify AP Pre image Download status	Passed	
DNACJ236S_SwimUI_15	Verify Distribution and Activation for Now	To verify Distribution and Activation for Now	Passed	
DNACJ236S_SwimUI_16	Schedule Distribution and Activation	To Schedule Distribution and Activation	Passed	
DNACJ236S_SwimUI_17	Schedule Software Distribution from Workflows page	To Schedule Software Distribution from Workflows page	Passed	
DNACJ236S_SwimUI_18	Schedule Software Activation After Distribution from Workflows page	To Schedule Software Activation After Distribution from Workflows page	Passed	
DNACJ236S_SwimUI_19	Schedule Distribution and Activation from Workflows page	To Schedule Distribution and Activation from Workflows page	Passed	
DNACJ236S_SwimUI_20	Verify Software Distribution for now	To verify Software Distribution for now	Passed	
DNACJ236S_SwimUI_21	Verify Software Activation After Distribution for Now	To verify Software Activation After Distribution for Now	Passed	

Long Term Reports

Logical ID	Title	Description	Status	Defect ID
DNACJ236S_LTR_1	Generating AP performance Report	To Generate AP performance report in Long term	Passed	
DNACJ236S_LTR_2	Generate the report for file type as CSV check the details of the report	To check the report generated for the file type as CSV and check details of the report	Passed	
DNACJ236S_LTR_3	Generating Long term AP detail	To Generate Long term AP detail	Passed	
DNACJ236S_LTR_4	Generate the report for file type as JSON check the details of the report	To check the report generated for the file type as JSON and check details of the report	Failed	CSCwe89323
DNACJ236S_LTR_5	Generate the report with all radio bands and Scope is Global check the details of the report	To check the report with all radio bands and Scope is Global is Run Now and check details of the report	Passed	
DNACJ236S_LTR_6	Generating Long Term AP Radio	To Generate Long Term AP radio	Passed	
DNACJ236S_LTR_7	Generate the report for Schedule is Run Recurring and check the details of the report	To check the report generated for Schedule is Run Recurring and check details of the report	Passed	
DNACJ236S_LTR_8	Generate the report for file type as Tableau data extract check the details of the report	To check the report generated for the file type as Tableau data extract and check details of the report	Passed	
DNACJ236S_LTR_9	Generating AP usage Client Breakdown Report	Generating AP usage Client Breakdown Report	Passed	
DNACJ236S_LTR_10	Generate the report for file type as PDF check the details of the report	Generate the report for file type as PDF check the details of the report	Passed	

DNACJ236S_LTR_11	Generate the report for the radio band 2.4 GHZ and check the details of the report	To check the report generated for radio band 2.4 GHZ and check details of the report	Passed	
DNACJ236S_LTR_12	Generate the report for the radio band 5 GHZ and check the details of the report	To check the report generated for radio band 5 GHZ and check details of the report	Passed	
DNACJ236S_LTR_13	Generate the report for the radio band 6 GHZ and check the details of the report	To check the report generated for radio band 6 GHZ and check details of the report	Passed	
DNACJ236S_LTR_14	Generate the report for time range is last 7 days and check the details of the report	To check the report generated for Time range as 7 days and check details of the report	Passed	
DNACJ236S_LTR_15	Generate the report for time range is last 24 hours and check the details of the report	To check the report generated for Time range as 24 hours and check details of the report	Passed	
DNACJ236S_LTR_16	Generate the report for time range is last 3 hours and check the details of the report	To check the report generated for Long term client session and check details of the report	Passed	
DNACJ236S_LTR_17	Generate Long Term Client Session Report	To check the report generated for Time range as 3 hours and check details of the report	Passed	
DNACJ236S_LTR_18	Generate the report for Schedule is Run Now and check the details of the report	To check the report generated for Schedule is Run Now and check details of the report	Passed	
DNACJ236S_LTR_19	Generate the report for Schedule is Run Later(one-time)and check the details of the report	To check the report generated for Schedule is Run Later(one-time)and check details of the report	Passed	

DNACJ236S_LTR_20	Generate the long term network report and check the details of the report	To check the report generated for network device availability and check details of the report	Passed	
DNACJ236S_LTR_21	Generate the report for time range is last 30 days check the details of the report	To check the report generated for time range is last 30 days check details of the report	Passed	
DNACJ236S_LTR_22	Generate the report for the Scope for (multiple device type) check the details of the report	To check the report generated for (multiple device type) is Core and check details of the report	Passed	

Individual AP maintenance mode

Logical ID	Title	Description	Status	Defect ID
DNACJ236S_IAPMM_1	Configure AP maintenance mode for 9120 AP	To Configure AP maintenance mode for 9120 AP and verify the details	Passed	
DNACJ236S_IAPMM_2	Configure AP maintenance mode for 9130 AP	To Configure AP maintenance mode for 9130 AP and verify the details	Passed	
DNACJ236S_IAPMM_3	Configure AP maintenance mode for 9105 AP	To Configure AP maintenance mode for 9105 AP and verify the details	Passed	
DNACJ236S_IAPMM_4	Configure AP maintenance mode for 9115 AP	To Configure AP maintenance mode for 9115 AP and verify the details	Passed	
DNACJ236S_IAPMM_5	Configure AP maintenance mode for 9124 AP	To Configure AP maintenance mode for 9115 AP and verify the details	Passed	
DNACJ236S_IAPMM_6	Configure AP maintenance mode for 4800 AP	To Configure AP maintenance mode for 9115 AP and verify the details	Passed	
DNACJ236S_IAPMM_7	Configure AP maintenance mode for 9166 AP	To Configure AP maintenance mode for 9166 AP and verify the details	Passed	
DNACJ236S_IAPMM_8	Configure AP maintenance mode for 9164 AP	To Configure AP maintenance mode for 9164 AP and verify the details	Passed	
DNACJ236S_IAPMM_9	Deleting an AP which in maintenance mode (Upcoming and InProgress)	Verify the maintenance mode status after deleting the AP	Passed	

DNACJ236S_IAPMM_10	Configuring maintenance mode on multiple Aps in combination with eWLC maintenance mode	Verify the maintenance mode status for eWLC	Passed	
DNACJ236S_IAPMM_11	Configuring the maintenance mode for an AP and followed by Configuring the maintenance mode on eWLC	Verify the maintenance mode status for eWLC & AP	Passed	
DNACJ236S_IAPMM_12	Editing the maintenance mode on an AP when maintenance mode is in progress	Verify maintenance mode status after editing the details.	Passed	
DNACJ236S_IAPMM_13	Verify AP reboot / AP Led Flash status/AP provisioning/AP config workflow when AP is in maintenance mode	Verify ap details during ap maintenance mode	Passed	CSCwe91345
DNACJ236S_IAPMM_14	Deleting the maintenance mode on an AP when maintenance mode is in progress	Verify the maintenance mode details to deleting maintenance mode on an AP during maintenance mode is in progress	Passed	
DNACJ236S_IAPMM_15	Delete eWLC from DNAC, when eWLC is in maintenance mode and re-add it to DNAC	Verify the maintenance mode status after readded to DNAC	Passed	
DNACJ236S_IAPMM_16	Configure AP RMA for an AP which is placed in maintenance mode	Verify Ap RMA configuration during AP maintenance mode	Passed	
DNACJ236S_IAPMM_17	Configure AP Refresh for an AP which is placed in maintenance mode	Verify Ap refresh configuration during AP maintenance mode	Passed	

DNACJ236S_IAPMM_18	Edit/Delete AP's maintenance mode when the eWLC is in maintenance mode	Verify AP maintenance mode able to edit/delete during eWLC maintenance mode	Passed	CSCwe91176
DNACJ236S_IAPMM_19	Configure maintenance mode when AP gets dissociated	Verify the maintenance mode status when AP gets dissociated	Passed	
DNACJ236S_IAPMM_20	Move an AP from eWLC1 to eWLC2 during AP maintenance mode, where both eWLC are not in maintenance mode	Verify AP maintenance mode status moving ap from eWLC1 to eWLC2, where both eWLC are not in maintenance mode	Passed	
DNACJ236S_IAPMM_21	Deleting the maintenance mode on an AP when maintenance mode is yet to start	Verify AP maintenance mode status while deleting ap maintenance mode during maintenance mode is yet to start	Passed	
DNACJ236S_IAPMM_22	Configuring the maintenance mode on EWC	Verify maintenance mode on EWC	Passed	
DNACJ236S_IAPMM_23	Configuring the maintenance mode on master AP and other sub Aps of EWC	Verify AP maintenance mode status for EWC Master and Sub AP's	Passed	
DNACJ236S_IAPMM_24	Configuring the maintenance mode for an eWLC followed by Configuring the maintenance mode an AP	Verify maintenance mode details for eWLC and AP which is configured back to back	Passed	
DNACJ236S_IAPMM_25	Continuously Configuring the maintenance mode for an AP	Verify ap details while configure continuous ap maintenance mode	Passed	
DNACJ236S_IAPMM_26	Editing the maintenance mode on an AP when maintenance mode is yet to start	Verify ap maintenance mode status after editing the maintenance mode on ap	Passed	

DNACJ236S_IAPMM _27	Associate client and perform AP maintenance mode	Verify client Status after AP maintenance mode	Passed	
------------------------	--	--	--------	--

Allow clone/copy of existing RF profile in wireless design

Logical ID	Title	Description	Status	Defect ID
DNACJ236S_CloneRF_1	Configure Basic RF profile with 2.4 GHz & disable 5 GHz and 6 GHz and create a clone	To Configure Basic RF profile with 2.4 GHz & disable 5 GHz and 6 GHz and create a clone on this profile	Failed	CSCwe84152
DNACJ236S_CloneRF_2	Configure Basic RF profile with 5 GHz & disable 2.4 GHz and 6 GHz and create on clone of this profile	To Configure Basic RF profile with 5 GHz & disable 2.4 GHz and 6 GHz and create on clone of this profile	Passed	
DNACJ236S_CloneRF_3	Configure Basic RF profile with 6 GHz & disable 2.4 GHz and 5 GHz and create on clone of this profile	To Configure Basic RF profile with 6 GHz & disable 2.4 GHz and 5 GHz and create on clone of this profile	Passed	
DNACJ236S_CloneRF_4	Configure AI RF profile with 2.4 GHz & disable 5 GHz and 6 GHz and create on clone of this profile	To Configure AI RF profile with 2.4 GHz & disable 5 GHz and 6 GHz and create on clone of this profile	Passed	
DNACJ236S_CloneRF_5	Configure AI RF profile with 5 GHz & disable 2.4 GHz and 6 GHz and create on clone of this profile	To Configure AI RF profile with 5 GHz & disable 2.4 GHz and 6 GHz and create on clone of this profile	Passed	
DNACJ236S_CloneRF_6	Configure AI RF profile with 6 GHz & disable 2.4 GHz and 5 GHz and create on clone of this profile	To Configure AI RF profile with 6 GHz & disable 2.4 GHz and 5 GHz and create on clone of this profile	Passed	
DNACJ236S_CloneRF_7	Check whether the Basic RF profile is able to edit/view with the edit option and create on clone of this profile	To Check whether the Basic RF profile is able to edit/view with the edit option and create on clone of this profile	Passed	

DNACJ236S_CloneRF_8	Check whether the Basic RF profile is able to Mark as Default and create a clone for this profile which is marked as default.	To Check whether the Basic RF profile is able to Mark as Default and create a clone for this profile which is marked as default.	Passed	
DNACJ236S_CloneRF_9	Check whether the Basic RF profile is able to Upgrade to AI and create a clone for this upgraded Profile.	To Check whether the Basic RF profile is able to Upgrade to AI and create a clone for this upgraded Profile.	Passed	
DNACJ236S_CloneRF_10	Check whether the Basic RF profile is able to clone with the create a clone option.	To Check whether the Basic RF profile is able to clone with the create a clone option.	Passed	
DNACJ236S_CloneRF_11	Check whether the Basic RF profile is able to delete after clone	To check whether the Basic RF profile is able to delete after clone	Passed	
DNACJ236S_CloneRF_12	Check whether the AI RF profile is able to edit/view with the edit option and create on clone of this profile	To Check whether the AI RF profile is able to edit/view with the edit option and create on clone of this profile	Passed	
DNACJ236S_CloneRF_13	Check whether the AI RF profile is able to clone with the create a clone option.	To Check whether the AI RF profile is able to clone with the create a clone option.	Passed	
DNACJ236S_CloneRF_14	Check whether the AI RF profile is able to delete after clone	To check whether the AI RF profile is able to delete after clone	Passed	
DNACJ236S_CloneRF_15	Check whether the AI RF Profile able to Map a site and create a clone for this profile.	To Check whether the AI RF Profile able to Map a site and create a clone for this profile.	Passed	
DNACJ236S_CloneRF_16	Check whether the AI RF Profile able to Unmap a site and create a clone for this profile.	To Check whether the AI RF Profile able to Unmap a site and create a clone for this profile.	Passed	

Last seen timestamp on AP360

Logical ID	Title	Description	Status	Defect ID
DNACJ236S_LST_1	Check 9120 AP is Added to DNAC	To Check 9120 AP added to DNAC	Passed	
DNACJ236S_LST_2	Check 9105 AP is Added to DNAC	To Check 9105 AP is added to DNAC	Passed	
DNACJ236S_LST_3	Check 9115AP is Added to DNAC	To Check 9115 AP is added to DNAC	Passed	
DNACJ236S_LST_4	Check the 9120 AP details shown in DNAC device 360 page	To Check the 9120 AP details shown in DNAC device 360 page	Passed	
DNACJ236S_LST_5	Check the 9115 AP details shown in DNAC device 360 page	To Check the 9115 AP details shown in DNAC device 360 page	Passed	
DNACJ236S_LST_6	Check the 9105 AP details shown in DNAC device 360 page	Check the 9105 AP details shown in DNAC device 360 page	Passed	
DNACJ236S_LST_7	Check the 9166 AP details shown in DNAC device 360 page	Check the 9166 AP details shown in DNAC device 360 page	Passed	
DNACJ236S_LST_8	Check the 9164 AP details shown in DNAC device 360 page	To Check the 9164 AP details shown in DNAC device 360 page	Passed	
DNACJ236S_LST_9	Check in Dashboard 9120Ap is timestamp details are seen	To Check in Dashboard 9120Ap is timestamp details are seen	Passed	
DNACJ236S_LST_10	Check in Dashboard 9105Ap is timestamp details are seen	To Check in Dashboard 9105Ap is timestamp details are seen	Passed	
DNACJ236S_LST_11	Check in Dashboard 9115 Ap time stamp details are seen	To Check in Dashboard 9115 Ap time stamp details are seen	Passed	

DNACJ236S_LST _12	Check in dashboard 9164/9166Ap lastseen Timestamp details updated	Check indashboard 9164/9166Ap lastseen Timestamp details updated	Passed	
DNACJ236S_LST _13	Check after 30 days disconnet Ap timestamp details are able to see	To Check after 30 days disconnet Ap timestamp details are able to see	Passed	
DNACJ236S_LST _14	Check after 90days disconnet Ap timestamp details are able to see	To Check after 90days disconnet Ap timestamp details are able to see	Passed	

Assurance Issues

Logical ID	Title	Description	Status	Defect ID
DNACJ236S_AI_1	Create an User defined issue	To Create an User defined issue	Passed	CSCwe32522
DNACJ236S_AI_2	Create an user defined issue	To Create an User defined issue from Assurance Events	Passed	CSCwe91239
DNACJ236S_AI_3	Create an user defined issue for Switch	To Create an User defined Issue for Switch	Passed	
DNACJ236S_AI_4	Create an issue for Switch from events	To Create an User defined Issue for Switch from Events	Passed	
DNACJ236S_AI_5	Create an issue for Wireless controller from events	To Create an user defined issue for Wireless controller from events	Passed	
DNACJ236S_AI_6	Create an for Wireless controller	to Create an user defined issue for Wireless controller	Passed	
DNACJ236S_AI_7	Able to edit the User defined Issue	To check able to Editing the user defined issue	Passed	
DNACJ236S_AI_8	Able to Edit the Issue for Switch	To Editing the User defined Issue for Switch	Passed	
DNACJ236S_AI_9	Editing the Issue for Wireless controller	To Editing the User defined Issue for Wireless controller	Passed	
DNACJ236S_AI_10	Create a profile for user defined issue	To Create a profile for user defined issue	Passed	
DNACJ236S_AI_11	Assign site to profile for issue	Assign site to profile for user defined issue	Passed	CSCwe83032
DNACJ236S_AI_12	Assign site as Global to profile for issue	Assign site as Global to profile for user defined issue	Passed	
DNACJ236S_AI_13	Create an issue with Email notification	To Create an issue with email notification	Passed	

DNACJ236S_AI_14	Create an issue with Syslog notification	To Create an issue with Syslog notification	Passed	
DNACJ236S_AI_15	Create an issue with Rest notification	To Create an issue with Rest notification	Passed	
DNACJ236S_AI_16	Create an issue with PAGERDUTY notification	To Create an issue with PagerDuty notification	Passed	
DNACJ236S_AI_17	Create an issue with Webex notification	To Create an issue with Webex notification	Passed	
DNACJ236S_AI_18	Delete an user defined issue	To Delete an user defined issue	Passed	
DNACJ236S_AI_19	Verify Assurance issues resolve or not	To Verify Assurance issues resolve or not	Passed	
DNACJ236S_AI_20	Verify Assurance issues Ignored or not	To Verify Assurance issues Ignored or not	Passed	

End Point Analytics and Device Classification

Logical ID	Title	Description	Status	Defect ID
DNACJ236S_EPA_1	Validate MFC details for android client	To Verify Device type, Hardware model and manufacturer, OS in android client showing or not	Passed	
DNACJ236S_EPA_2	Validate MFC details for windows client	To Verify Device type, Hardware model and manufacturer, OS in windows client showing or not	Passed	
DNACJ236S_EPA_3	Validate MFC details for mac client	To Verify Device type, Hardware model and manufacturer, OS in mac client showing or not	Passed	
DNACJ236S_EPA_4	Validate MFC details for iOS client	To Verify Device type, Hardware model and manufacturer, OS in iOS client showing or not	Passed	
DNACJ236S_EPA_5	Validate MFC details for Surface Go client	To Verify Device type, Hardware model and manufacturer, OS in surface client showing or not	Passed	
DNACJ236S_EPA_6	Validate trust score details for android client	To Verify trust score details showing or not for android client	Passed	
DNACJ236S_EPA_7	Validate trust score for windows client	To Verify trust score details showing or not for windows client	Passed	
DNACJ236S_EPA_8	Validate trust score for mac client	To Verify trust score details showing or not for mac client	Passed	

DNACJ236S_EPA_9	Validate trust score for iOS client	To Verify trust score details showing or not for iOS client	Passed	
DNACJ236S_EPA_10	Validate trust score for surface Go client	To Verify trust score details showing or not for surface client	Passed	
DNACJ236S_EPA_11	Register the end point and validate the details	To verify end point registered or not in endpoint analytics	Passed	
DNACJ236S_EPA_12	Configure custom rule for endpoints	To verify custom rule applied or not for end points.	Failed	CSCwe32506
DNACJ236S_EPA_13	Edit the custom rule for endpoints	To verify custom rule able to edit or not for endpoints	Passed	
DNACJ236S_EPA_14	Delete the endpoint and validate the details	To verify endpoint deleted or not	Passed	
DNACJ236S_EPA_15	Export the endpoint details and verify the details	To verify endpoint details showing or not in exported file	Passed	
DNACJ236S_EPA_16	Check endpoint details for 3 hours time range	To verify endpoint details showing or not for 3 hours time range	Passed	
DNACJ236S_EPA_17	Check endpoint details for 24 hours time range	To verify endpoint details showing or not for 24 hours time range	Passed	
DNACJ236S_EPA_18	Check endpoint details for 7 days time range	To verify endpoint details showing or not for 7 days time range	Passed	
DNACJ236S_EPA_19	Validate device info details for endpoints	To verify MFC details showing or not in device info	Passed	

PoE visibility - AP Power Save Mode Distribution

Logical ID	Title	Description	Status	Defect ID
DNACJ236S_POE_1	Create a Power Profile from DNAC	To Create the Power Profile and to map it with AP join profile in DNAC	Passed	CSCwe28412
DNACJ236S_POE_2	Provision 9800-L with power profile	To check whether the power profile is pushed to 9800-L controller after Provision	Passed	
DNACJ236S_POE_3	Provision 9800-CL with power profile	To check whether the power profile is pushed to 9800-CL controller after Provision	Passed	
DNACJ236S_POE_4	Provision 9800-80 with power profile	To check whether the power profile is pushed to 9800-80 controller after Provision	Passed	
DNACJ236S_POE_5	Provision 9120 AP for Power save mode	To check whether the 9120 AP is in Power saving mode for given time range	Passed	CSCwe56562
DNACJ236S_POE_6	Provision 9115 AP for Power save mode	To check whether the 9115 AP is in Power saving mode for given time range	Passed	
DNACJ236S_POE_7	Provision 9130 AP for Power save mode	To check whether the 9130 AP is in Power saving mode for given time range	Passed	
DNACJ236S_POE_8	Provision 9164 AP for Power save mode	To check whether the 9164 AP is in Power saving mode for given time range	Passed	
DNACJ236S_POE_9	Provision 9166 AP for Power save mode	To check whether the 9166 AP is in Power saving mode for given time range	Passed	

DNACJ236S_POE_10	Provision 9105 AP with power profile	To check whether provisioning 9105 AP from DNAC with power profile config affecting ap or not	Passed	
DNACJ236S_POE_11	Provision 9124 AP with power profile	To check whether provisioning 9124 AP from DNAC with power profile config affecting ap or not	Passed	
DNACJ236S_POE_12	Check distribution dashlet with all normal mode Aps	To check whether the AP Power save mode distribution dashlet shows the all AP in normal mode when no power save mode is enabled	Failed	CSCwe26790
DNACJ236S_POE_13	Check distribution dashlet for capability	To check whether the AP Power save mode distribution dashlet shows the count of Aps supported and not supported counts correctly	Passed	
DNACJ236S_POE_14	Check distribution dashlet with power save mode Aps	To check whether the AP Power save mode distribution dashlet shows the Aps currently in power save count in power save mode	Passed	CSCwe36368
DNACJ236S_POE_15	Top site details in AP Power Save mode Distribution dashlet	To check and verify the Top site details in AP Power Save mode Distribution dashlet	Passed	
DNACJ236S_POE_16	Top APs details in AP Power Save mode Distribution dashlet	To check and verify the Top APs details in AP Power Save mode Distribution dashlet	Passed	

DNACJ236S_POE_17	Trend Tab of AP Power Save mode Distribution dashlet	To check Whether the Trend Tab of the dashlet is working fine and data is shown	Passed	
DNACJ236S_POE_18	Device Table in latest Tab of the AP Power Save mode Distribution dashlet	To check the elements of the dashlet in latest tab and validate the table shown for each selected element	Passed	
DNACJ236S_POE_19	Device Table in Trend Tab of the AP Power Save mode Distribution dashlet	To check the elements of the dashlet in trend tab and validate the table shown for each selected element	Passed	
DNACJ236S_POE_20	AP Power save mode Distribution dashlet for 3hr time range	To check the Data in Power save mode Distribution dashlet for 3hr time range	Passed	CSCwe36363
DNACJ236S_POE_21	AP Data in Power save mode Distribution dashlet for 24hr time range	To check the Data in Power save mode Distribution dashlet for 24hr time range	Passed	
DNACJ236S_POE_22	AP Data in Power save mode Distribution dashlet for 7days time range	To check the Data in Power save mode Distribution dashlet for 7days time range	Passed	
DNACJ236S_POE_23	Check the Data in Power save mode Distribution dashlet for Global Location	To check the Data in Power save mode Distribution dashlet for Global location	Passed	
DNACJ236S_POE_24	Check the Data in Power save mode Distribution dashlet for custom Location	To check the Data in Power save mode Distribution dashlet for custom location	Passed	
DNACJ236S_POE_25	Check whether the AP shows power save mode when it is configured from Controller	To check whether the AP shows power save mode when it is configured from Controller	Passed	



Regression Features

- [Overall and Network Health Dashboard](#), on page 59
- [Unique clients and users summary](#), on page 63
- [Rolling AP Upgrade](#), on page 65
- [Busiest AP](#), on page 67
- [Open RRM Phase 2 - RF Simulator](#), on page 69
- [Support scheduling of SSID broadcasting](#), on page 71
- [AP Usage and Client Breakdown Report](#), on page 76
- [Assurance workflow changes to support AP Refresh](#), on page 78
- [Smart Licencing](#), on page 79
- [All Data Report - Inventory and SWIM](#), on page 81
- [3D Maps Enhancements Phase 2](#), on page 83
- [Worst Interferer](#), on page 86
- [Called Station ID](#), on page 88
- [Support configuration of advanced WLAN parameters](#), on page 91
- [Site 360/Dashboard Landing Page](#), on page 93
- [Support for recurring discovery](#), on page 95
- [Network Insights - Radio Insights based on Client Experience](#), on page 97
- [Inventory: Support for Maintenance mode](#), on page 99
- [AP Reboot for Troubleshooting](#), on page 102
- [Busiest Client Report](#), on page 104
- [Troubleshoot Certification - WLC Unmonitored](#), on page 106
- [Support for Custom Policy Tag for C9800](#), on page 109
- [Ability to manage multiple AP groups /Policy tags](#), on page 112
- [Support AP refresh across different WLCs](#), on page 113
- [Channel Change Report](#), on page 114
- [Enhancements for mobility peer configuration](#), on page 117
- [Support phase-2 Mesh configurations on wireless LAN controllers](#), on page 120
- [Enable Multiple Anchor WLCs configuration for SSID](#), on page 124
- [Support for manually disabling clients on wireless controller](#), on page 126
- [Top N Site - SLA Dashboard - Client KPIs](#), on page 127
- [Support tri radio configuration on Access Points](#), on page 130
- [Support for CCKM configuration on SSID](#), on page 133
- [Client Global Events viewer](#), on page 137

- Troubleshooting tab on AP-360, on page 139
- Channel Utilization Breakout, on page 142
- Issues correlation[AP-down issue], on page 144
- Support custom WLAN profile configuration from DNAC, on page 146
- Pan Assurance event viewer (Phase - 3), on page 150
- Network Services DHCP Failure Reasons, on page 152
- Multi WLC Support for MRE based client troubleshooting, on page 154
- Application experience for flex and fabric, on page 156
- Support AP Authorization (AAA) configuration from DNAC, on page 158
- Rogue report parity with Prime, on page 161
- Support configuration of advanced WLAN parameters (like CHD, others), on page 163
- Support Custom AP Join Profile configurations including SSH, username credentials update from DNAC, on page 165
- Support Client Rate limiting configuration on SSID, on page 167
- Wireless Flexible Reports - Phase 1, on page 169
- Accessibility: Menu Navigation and Search Navigation, on page 171
- Ability to support power profile across APs from DNA Center, on page 173
- Client-360 Assurance enhancements, on page 175
- Config Wireless, on page 177

Overall and Network Health Dashboard

Logical ID	Title	Description	Status	Defect ID
DNACJ236S_Reg_1	Adding network devices in DNAC	To add network devices like switches, Controllers to DNAC and check if the network devices gets added to DNAC or not	Passed	
DNACJ236S_Reg_2	Check if the added device is shown in the overall health dashboard	To check if the Network device added in DNAC is shown in the overall health dashboard	Failed	CSCwe95678
DNACJ236S_Reg_3	Connecting a Windows clients to a WLAN and check if the client health ,Active clients detail is shown in the wireless Clients dashlet	To connect a Window clients to the wlan created and check if the clients health is shown in the wireless client summary	Passed	
DNACJ236S_Reg_4	Connecting a Android clients to a WLAN and check if the client health ,Active clients detail is shown in the wireless Clients dashlet	To connect a Android clients to the wlan created and check if the clients health is shown in the wireless client summary	Passed	
DNACJ236S_Reg_5	Connecting a IOS clients to a WLAN and check if the client health ,Active clients detail is shown in the wireless Clients dashlet	To connect a IOS clients to the wlan created and check if the clients health is shown in the wireless client summary	Passed	

DNACJ236S_Reg_6	Connecting a Mac OS clients to a WLAN and check if the client health ,Active clients detail is shown in the wireless Clients dashlet	To connect a Mac OS clients to the wlan created and check if the clients health is shown in the wireless client summary	Passed	
DNACJ236S_Reg_7	Connecting a clients to a WLAN with WPA + WPA2 Security and check if the client health ,Active clients detail is shown in the wireless Clients dashlet	To connect a clients to the wlan with WPA + WPA2 security and check if the clients health is shown in the wireless client summary	Passed	
DNACJ236S_Reg_8	Connecting a clients to a WLAN with WPA2 + WPA3 Security and check if the client health ,Active clients detail is shown in the wireless Clients dashlet	To connect a clients to the wlan with WPA + WPA2 security and check if the clients health is shown in the wireless client summary	Passed	
DNACJ236S_Reg_9	Connecting a clients to a WLAN with Static WEP Security and check if the client health ,Active clients detail is shown in the wireless Clients dashlet	To connect a clients to the wlan with Static WEP security and check if the clients health is shown in the wireless client summary	Passed	
DNACJ236S_Reg_10	Connecting a Wired client to a RLAN and check if the client health is shown in the wired Clients dashlet	To connect a clients to the rlan created and check if the clients health is shown in the wired client summary	Passed	
DNACJ236S_Reg_11	Check the issue shown in the Top 10 issue types	To check if the issue shown in the top 10 issue type dashlet	Passed	

DNACJ236S_Reg_12	Resolving the issue shown and checking the resolved list	To check if the issue shown in the top 10 issue type dashlet are resolved and the resolved issue are show in resolved list or not	Passed	
DNACJ236S_Reg_13	Check if the added network device is shown in the Network Health page	To check if the Network device added in DNAC is shown in the Network health dashboard	Passed	
DNACJ236S_Reg_14	Validating the graphs shown for the network devices	To validate the if the graphs shown in the network health pages are correct	Failed	CSCwe26761
DNACJ236S_Reg_15	Checking the total APs count in the network device page in Total AP count dashlet	To check the total APs count in the network health page which is added in eWLC and check if the AP count are shown correctly	Passed	
DNACJ236S_Reg_16	Checking the Top N APs count in the network device page in Assurance page	To check the Top N APs count in the network health page which in added in eWLC and check if the AP count are shown correctly	Passed	
DNACJ236S_Reg_17	Validating the Top N APs by High Interference in network device in Assurance page	To validate the Top N APs by high interference in the network health page which is added in eWLC and check if the AP count are shown correctly	Passed	
DNACJ236S_Reg_18	Making a eWLC down to check if the Dashboard are updated or not	To make the eWLC down and check if the dashboards in network health are updated accordingly	Passed	

DNACJ236S_Reg_19	Deleting the eWLC with AP and the dashboards	To delete the eWLC with multiples AP and check if the dashboards are updated	Passed	
------------------	--	--	--------	--

Unique clients and users summary

Logical ID	Title	Description	Status	Defect ID
DNACJ236S_Reg_20	Create report with default pre-set options	To create report with default pre-set options	Passed	
DNACJ236S_Reg_21	Test report with 'Global' for location filter	To test report with 'Global' for location filter	Passed	
DNACJ236S_Reg_22	Test report with single area for location filter	To test report with single area for location filter	Passed	
DNACJ236S_Reg_23	Test report with multiple areas for location filter	To test report with multiple areas for location filter	Passed	
DNACJ236S_Reg_24	Test report with single building for location filter	To test report with single building for location filter	Passed	
DNACJ236S_Reg_25	Test report with multiple buildings for location filter	To test report with multiple buildings for location filter	Passed	
DNACJ236S_Reg_26	Test report with single floor for location filter	To test report with single floor for location filter	Passed	
DNACJ236S_Reg_27	Test report with multiple floors for location filter	To test report with multiple floors for location filter	Passed	
DNACJ236S_Reg_28	Test report with mixed area, building, floor for location filter	To test report with mixed area, building, floor for location filter	Passed	
DNACJ236S_Reg_29	Test WLC filter-single	To test WLC filter-single	Passed	
DNACJ236S_Reg_30	Test WLC filter-multiple	To test WLC filter-multiple	Passed	
DNACJ236S_Reg_31	Test with both WLC and Location filter	To test with both WLC and Location filter	Passed	
DNACJ236S_Reg_32	Test report with only one field for content	To test report with only one field for content	Passed	

DNACJ236S_Reg_33	Test report with subset field for content	To test report with subset field for content	Passed	
DNACJ236S_Reg_34	Test report with breakdown by VLAN	To test report with breakdown by VLAN	Passed	
DNACJ236S_Reg_35	Test report with breakdown by SSID	To test report with breakdown by SSID	Passed	
DNACJ236S_Reg_36	Test report with breakdown by Vendor	To test report with breakdown by Vendor	Passed	
DNACJ236S_Reg_37	Test report with breakdown by protocol	To test report with breakdown by protocol	Passed	
DNACJ236S_Reg_38	Test report sort by 'Client Count'	To test report sort by 'Client Count'	Passed	
DNACJ236S_Reg_39	Test report schedule function	To test report schedule function	Passed	
DNACJ236S_Reg_40	Verify report data accuracy with different type of clients	To verify report data accuracy with different type of APs	Passed	

Rolling AP Upgrade

Logical ID	Title	Description	Status	Defect ID
DNACJ236S_Reg_41	Providing the same controller name and ip address for primary controller and N+1 controller	To check whether the same controller name is accepted or not for primary controller and N+1 controller	Passed	
DNACJ236S_Reg_42	Upgrading the software image in a controller	To check whether the software image is upgraded in controller	Passed	
DNACJ236S_Reg_43	Scheduling the time to upgrade the software image into a controller.	To check whether the software image is upgraded into a controller in scheduling time	Passed	
DNACJ236S_Reg_44	Scheduling the time "Now" to upgrade the software image into a controller.	To check whether the software image is upgraded into a controller in scheduling time "Now"	Passed	
DNACJ236S_Reg_45	Resync trigger to Controller from DNAC after upgrade the software image in controller.	To check whether Controller is reloaded when triggering from DNAC after upgrade the software image in controller.	Passed	
DNACJ236S_Reg_46	Upgrade the wrong software image into the Controller from DNAC	To verify whether the error message will display when trying to upgrade wrong software image into the Controller from DNAC	Passed	
DNACJ236S_Reg_47	AP joining status to Controller after upgrade the software image	To check whether the joined Aps upgraded with controller image	Passed	

DNACJ236S_Reg_48	Verify the client connectivity status to Controller after upgrade the software image	To check whether the Client associate with controller	Passed	
DNACJ236S_Reg_49	Upgrading the software image into existing group of AP	To check whether the software image is upgraded into existing group of AP	Passed	
DNACJ236S_Reg_50	Import the image to image repository using HTTP	To check whether the WLC is upgraded using TFTP from PI	Passed	
DNACJ236S_Reg_51	Import the image to image repository using FTP	To check whether the WLC is upgraded using FTP from PI	Passed	

Busiest AP

Logical ID	Title	Description	Status	Defect ID
DNACJ236S_Reg_52	Error message check	To check whether error message is popped if 'Number of Aps' and 'Sort by' filters are left blank	Passed	
DNACJ236S_Reg_53	Default check	To create a report with default value	Passed	
DNACJ236S_Reg_54	Test report with 'Global' for location filter	To test report with 'Global' for location filter	Passed	
DNACJ236S_Reg_55	Test report with single area for location filter	To test report with single area for location filter	Passed	
DNACJ236S_Reg_56	Test report with multiple areas for location filter	To test report with multiple areas for location filter	Passed	
DNACJ236S_Reg_57	Test report with single building for location filter	To test report with single building for location filter	Passed	
DNACJ236S_Reg_58	Test report with multiple buildings for location filter	To test report with multiple buildings for location filter	Passed	
DNACJ236S_Reg_59	Test WLC filter-single	To test WLC filter-single	Passed	
DNACJ236S_Reg_60	Test WLC filter-multiple	To test WLC filter-multiple	Passed	
DNACJ236S_Reg_61	Test with both WLC and Location filter	To test with both WLC and Location filter	Passed	
DNACJ236S_Reg_62	Test report with mixed area, building, floor for location filter	To test report with mixed area, building, floor for location filter	Passed	
DNACJ236S_Reg_63	Test report with top 10 APs	To test report with top 10 APs	Passed	
DNACJ236S_Reg_64	Test report with top 25 APs	To test report with top 25 APs	Passed	
DNACJ236S_Reg_65	Test report with top 50 APs	To test report with top 50 APs	Passed	

DNACJ236S_Reg_66	Test report with All APs	To test report with All APs	Passed	
DNACJ236S_Reg_67	Test report sort by 'AP Name'	To test report sort by 'AP Name'	Passed	
DNACJ236S_Reg_68	Test report sort by 'Rx Utilization'	To test report sort by 'Rx Utilization'	Passed	
DNACJ236S_Reg_69	Test report sort by 'Tx Utilization'	To test report sort by 'Tx Utilization'	Passed	
DNACJ236S_Reg_70	Test report sort by 'Radio Utilization'	To test report sort by 'Radio Utilization'	Passed	
DNACJ236S_Reg_71	Test report sort by 'Client Count'	To test report sort by 'Client Count'	Passed	
DNACJ236S_Reg_72	Test report schedule function	To test report schedule function	Passed	

Open RRM Phase 2 - RF Simulator

Logical ID	Title	Description	Status	Defect ID
DNACJ236S_Reg_73	Configure Open RRM and enable connectivity to kairos cloud	To configure Open RRM and enable connectivity to kairos cloud	Passed	CSCwe27965
DNACJ236S_Reg_74	Configure Open RRM and test for 5ghz band	To configure Open RRM and for 5ghz band	Passed	
DNACJ236S_Reg_75	Configure Open RRM and test for 2.4ghz band	To configure Open RRM and test for 2.4ghz band	Passed	
DNACJ236S_Reg_76	Configure Open RRM with WPA3 security	To configure Open RRM with WPA3 security	Passed	
DNACJ236S_Reg_77	Configure Open RRM with WPA2 security	To configure Open RRM with WPA2 security	Passed	
DNACJ236S_Reg_78	Configure Open RRM and test with android client	To configure Open RRM and test with android client	Passed	
DNACJ236S_Reg_79	Configure Open RRM and test with iPhone client	To configure Open RRM and test with iPhone client	Passed	
DNACJ236S_Reg_80	Configure Open RRM and test with Mac client	To configure Open RRM and test with Mac client	Passed	
DNACJ236S_Reg_81	Configure Open RRM and test with Surface client	To configure Open RRM and test with Surface client	Passed	
DNACJ236S_Reg_82	Configure Open RRM and test with Windows client	To configure Open RRM and test with Windows client	Passed	
DNACJ236S_Reg_83	Configure Open RRM and test with only FRA enabled	To configure Open RRM and test with only FRA enabled	Passed	
DNACJ236S_Reg_84	Configure Open RRM and test with only DCA enabled	To configure Open RRM and test with only DCA enabled	Passed	

DNACJ236S_Reg_85	Configure Open RRM and test with only TPC enabled	To configure Open RRM and test with only TPC enabled	Passed	
DNACJ236S_Reg_86	Configure Open RRM and test with only DBS enabled	To configure Open RRM and test with only DBS enabled	Passed	
DNACJ236S_Reg_87	Configure Open RRM and test with different RF algorithm combinations	To configure Open RRM and test with different RF algorithm combinations	Passed	
DNACJ236S_Reg_88	Configure Open RRM and test with manually assigned channel bandwidth and channel nos	To configure Open RRM and test with manually assigned channel bandwidth and channel nos	Passed	
DNACJ236S_Reg_89	Configure Open RRM and test with 9115, 9120, 9130 AP	To configure Open RRM and test with 9115, 9120, 9130 AP	Passed	
DNACJ236S_Reg_90	Configure Open RRM and test with 4800 AP	To configure Open RRM and test with 4800 AP	Passed	
DNACJ236S_Reg_91	Configure Open RRM and test with eWLC HA	To configure Open RRM and test with eWLC HA	Passed	
DNACJ236S_Reg_92	Configure Open RRM and test with EWC	To configure Open RRM and test with EWC	Passed	

Support scheduling of SSID broadcasting

Logical ID	Title	Description	Status	Defect ID
DNACJ236S_Reg_93	Create a SSID Scheduler profile with Enable SSID scheduler function in DNAC	To Create a SSID Scheduler profile with Enable SSID scheduler function in DNAC	Passed	
DNACJ236S_Reg_94	Create a SSID Scheduler profile with Client Deny scheduler function in DNAC	To Create a SSID Scheduler profile with Client Deny scheduler function in DNAC	Passed	
DNACJ236S_Reg_95	Create a SSID Scheduler profile with Client Deny/Enable SSID scheduler function and Daily Scheduler type in DNAC	To create a SSID Scheduler profile with Client Deny/Enable SSID scheduler function and Daily Scheduler type in DNAC	Passed	
DNACJ236S_Reg_96	Create a SSID Scheduler profile with Client Deny/Enable SSID scheduler function and Weekly Scheduler type in DNAC	To create a SSID Scheduler profile with Client Deny/Enable SSID scheduler function and Weekly Scheduler type in DNAC	Passed	
DNACJ236S_Reg_97	Create a SSID Scheduler profile with Client Deny/Enable SSID scheduler function and monthly Scheduler type in DNAC	To create a SSID Scheduler profile with Client Deny/Enable SSID scheduler function and monthly Scheduler type in DNAC	Passed	
DNACJ236S_Reg_98	Create a SSID and map with the created SSID Profile	To create a SSID and map with the created SSID Profile	Passed	

DNACJ236S_Reg_99	Create a SSID with daily scheduler and provision with 9800-L controller and check whether the configuration reflected in 9800-L controller	To create a SSID with daily scheduler and provision with 9800-L controller and check whether the configuration reflected in 9800-L controller	Passed	
DNACJ236S_Reg_100	Create a SSID with daily scheduler and provision with 9800-CL controller and check whether the configuration reflected in 9800-CL controller	To create a SSID with daily scheduler and provision with 9800-CL controller and check whether the configuration reflected in 9800-CL controller	Passed	
DNACJ236S_Reg_101	Create a SSID with daily scheduler and provision with 9800-80 controller and check whether the configuration reflected in 9800-80 controller	To create a SSID with daily scheduler and provision with 9800-80 controller and check whether the configuration reflected in 9800-80 controller	Passed	
DNACJ236S_Reg_102	Create a SSID with weekly scheduler and provision with 9800-L controller and check whether the configuration reflected in 9800-L controller	To create a SSID with weekly scheduler and provision with 9800-L controller and check whether the configuration reflected in 9800-L controller	Passed	
DNACJ236S_Reg_103	Create a SSID with weekly scheduler and provision with 9800-CL controller and check whether the configuration reflected in 9800-CL controller	To create a SSID with weekly scheduler and provision with 9800-CL controller and check whether the configuration reflected in 9800-CL controller	Passed	

DNACJ236S_Reg_104	Create a SSID with weekly scheduler and provision with 9800-80 controller and check whether the configuration reflected in 9800-80 controller	To create a SSID with weekly scheduler and provision with 9800-80 controller and check whether the configuration reflected in 9800-80 controller	Passed	
DNACJ236S_Reg_105	Create a SSID with monthly scheduler and provision with 9800-L controller and check whether the configuration reflected in 9800-L controller	To create a SSID with monthly scheduler and provision with 9800-L controller and check whether the configuration reflected in 9800-L controller	Passed	
DNACJ236S_Reg_106	Create a SSID with monthly scheduler and provision with 9800-CL controller and check whether the configuration reflected in 9800-CL controller	To create a SSID with monthly scheduler and provision with 9800-CL controller and check whether the configuration reflected in 9800-CL controller	Passed	
DNACJ236S_Reg_107	Create a SSID with monthly scheduler and provision with 9800-80 controller and check whether the configuration reflected in 9800-80 controller	To create a SSID with monthly scheduler and provision with 9800-80 controller and check whether the configuration reflected in 9800-80 controller	Passed	
DNACJ236S_Reg_108	Create a SSID with daily scheduler and provision with 9800-L/CL/80 controller and check for client connectivity	To create a SSID with daily scheduler and provision with 9800-L/CL/80 controller and check for client connectivity	Passed	

DNACJ236S_Reg_109	Create a SSID with weekly scheduler and provision with 9800-L/CL/80 controller and check for client connectivity	To create a SSID with weekly scheduler and provision with 9800-L/CL/80 controller and check for client connectivity	Passed	
DNACJ236S_Reg_110	Create a SSID with monthly scheduler and provision with 9800-L/CL/80 controller and check for client connectivity	To create a SSID with monthly scheduler and provision with 9800-L/CL/80 controller and check for client connectivity	Passed	
DNACJ236S_Reg_111	Create a SSID with Enable SSID function and check whether the SSID is broadcasted at selected time period	To create a SSID with Enable SSID function and check whether the SSID is broadcasted at selected time period	Passed	
DNACJ236S_Reg_112	Create a SSID with Client deny function and check whether client not able to join the ssid at selected time period	To create a SSID with Client deny function and check whether client not able to join the ssid at selected time period	Passed	
DNACJ236S_Reg_113	Check whether the SSID scheduler from DNAC is working fine in 9105 AP	To check whether the SSID scheduler from DNAC is working fine in 9105 AP	Passed	
DNACJ236S_Reg_114	Check whether the SSID scheduler from DNAC is working fine in 9115 AP	To check whether the SSID scheduler from DNAC is working fine in 9115 AP	Passed	
DNACJ236S_Reg_115	Check whether the SSID scheduler from DNAC is working fine in 9120 AP	To check whether the SSID scheduler from DNAC is working fine in 9120 AP	Passed	

DNACJ236S_Reg_116	Check whether the SSID scheduler from DNAC is working fine in 9130 AP	To check whether the SSID scheduler from DNAC is working fine in 9130 AP	Passed	
DNACJ236S_Reg_117	Check the SSID scheduler with open security ssid	To check the SSID scheduler with open security ssid	Passed	
DNACJ236S_Reg_118	Check the SSID scheduler with WPA2-PSK security ssid	To check the SSID scheduler with WPA2-PSK security ssid	Passed	
DNACJ236S_Reg_119	Check the SSID scheduler with WPA3-PSK security ssid	To check the SSID scheduler with WPA3-PSK security ssid	Passed	
DNACJ236S_Reg_120	Check the SSID scheduler with WPA2-802.1x security ssid	To check the SSID scheduler with WPA2-802.1x security ssid	Passed	
DNACJ236S_Reg_121	Check the SSID scheduler with WPA3-802.1x security ssid	To check the SSID scheduler with WPA3-802.1x security ssid	Passed	
DNACJ236S_Reg_122	Check the SSID Scheduler with Windows client	To check the SSID Scheduler with Windows client	Passed	
DNACJ236S_Reg_123	Check the SSID Scheduler with Mac client	To check the SSID Scheduler with Mac client	Passed	
DNACJ236S_Reg_124	Check the SSID Scheduler with Android client	To check the SSID Scheduler with Android client	Passed	
DNACJ236S_Reg_125	Check the SSID Scheduler with Surface client	To check the SSID Scheduler with Surface client	Passed	

AP Usage and Client Breakdown Report

Logical ID	Title	Description	Status	Defect ID
DNACJ236S_Reg_126	Connect Android client and check if it is shown in the generated report.	To connect Android client and check if it is shown in the generated report.	Passed	
DNACJ236S_Reg_127	Connect iPhone client and check if it is shown in the generated report.	To connect iPhone client and check if it is shown in the generated report.	Passed	
DNACJ236S_Reg_128	Connect Mac client and check if it is shown in the generated report.	To connect Mac client and check if it is shown in the generated report.	Passed	
DNACJ236S_Reg_129	Check details of connected clients to 2.4Ghz & 5Ghz bands.	To check details of connected clients to 2.4Ghz & 5Ghz bands.	Passed	
DNACJ236S_Reg_130	Check device details with bad health in generated report.	To check device details with bad health in generated report.	Passed	
DNACJ236S_Reg_131	Check if device inventory is updated in report with addition of network devices/clients.	To check if device inventory is updated in report with addition of network devices/clients.	Passed	
DNACJ236S_Reg_132	Generate report with different time range values.	To generate report with different time range values.	Passed	
DNACJ236S_Reg_133	Generate report with different custom time range values.	To generate report with different custom time range values.	Passed	
DNACJ236S_Reg_134	Schedule report generation using template	To schedule report generation using template	Passed	
DNACJ236S_Reg_135	Schedule recurring report generation using template	To schedule recurring report generation using template	Passed	

DNACJ236S_Reg_136	Email report option during report generation	To check Email report option during report generation	Passed	
DNACJ236S_Reg_137	Webhook notification during report generation	To check webhook notification during report generation	Passed	
DNACJ236S_Reg_138	Edit config of generated report template	To edit config of generated report template	Passed	
DNACJ236S_Reg_139	Duplicate report option using existing report	To duplicate report option using existing report	Passed	
DNACJ236S_Reg_140	Trigger report generation using Run now option	To trigger report generation using Run now option	Passed	
DNACJ236S_Reg_141	Delete report using delete option under action tab	To delete report using delete option under action tab	Passed	
DNACJ236S_Reg_142	Test report with breakdown by VLAN	To test report with breakdown by VLAN	Passed	
DNACJ236S_Reg_143	Test report with breakdown by SSID	To test report with breakdown by SSID	Passed	
DNACJ236S_Reg_144	Test report with breakdown by Vendor	To test report with breakdown by Vendor	Passed	
DNACJ236S_Reg_145	Test report with breakdown by OS type	To test report with breakdown by OS type	Passed	
DNACJ236S_Reg_146	Test report sort by 'Client Count'	To test report sort by 'Client Count'	Passed	
DNACJ236S_Reg_147	Test report schedule function	To test report schedule function	Passed	
DNACJ236S_Reg_148	Verify report data accuracy with different type of clients	To verify report data accuracy with different type of APs	Passed	

Assurance workflow changes to support AP Refresh

Logical ID	Title	Description	Status	Defect ID
DNACJ236S_Reg_149	Provision network devices in DNAC using Inventory & PNP flow	To provision network devices in DNAC using Inventory & PNP flow	Passed	
DNACJ236S_Reg_150	Perform AP Refresh flow in DNAC and verify the details	To perform AP Refresh flow in DNAC and verify the details	Passed	
DNACJ236S_Reg_151	Check the report after Ap Refresh process is done	To verify AP details in report after ap replacement	Passed	
DNACJ236S_Reg_152	AP Refresh process using different model AP(9115 to 9130)	To verify AP Refresh with different AP model	Passed	
DNACJ236S_Reg_153	Verify AP refresh works fine for all model APs	Verify AP refresh works fine for all model APs	Passed	
DNACJ236S_Reg_154	Choosing new AP from same controller for AP refresh	To choose new AP from same controller for AP refresh	Passed	
DNACJ236S_Reg_155	Choosing new AP from different controller for AP refresh	To choose new AP from different controller for AP refresh	Passed	
DNACJ236S_Reg_156	Perform AP refresh process for bulk amount of AP's	To perform AP refresh process for bulk amount of AP's	Passed	

Smart Licencing

Logical ID	Title	Description	Status	Defect ID
DNACJ236S_Reg_157	Configuring Smart account in DNAC via UI	To Configuring Smart account in DNAC via UI and check if the Profile is created or not	Passed	
DNACJ236S_Reg_158	Configuring Smart account in DNAC via UI with wrong credentials.	To Configuring Smart account in DNAC via UI with wrong credentials and verify it giving proper error messages .	Passed	
DNACJ236S_Reg_159	Verify able to fetch the satellite name	To Verify able to fetch the satellite name correctly with out any issues.	Passed	
DNACJ236S_Reg_160	Verify able to show proper error message for smart account adding.	To Verify able to show proper error message for smart account adding.	Passed	
DNACJ236S_Reg_161	Verify SSM Connection Mode :Direct	To Verify SSM Connection Mode :Direct	Passed	
DNACJ236S_Reg_162	Verify SSM Connection Mode: On-Prem CSSM :	To Verify SSM Connection Mode: On-Prem CSSM :	Passed	
DNACJ236S_Reg_163	Verify SSM Connection Mode: proxy	To Verify SSM Connection Mode: proxy:	Passed	
DNACJ236S_Reg_164	Verify SSM Connection Mode :Direct with 9800-40 model controller.	To Verify SSM Connection Mode :Direct with 9800-40 model controller.	Passed	
DNACJ236S_Reg_165	Verify SSM Connection Mode :Direct with 9800-80 model controller.	To Verify SSM Connection Mode :Direct with 9800-80 model controller.	Passed	
DNACJ236S_Reg_166	Verify SSM Connection Mode :Direct with 9800-L model controller.	To Verify SSM Connection Mode :Direct with 9800-L model controller.	Passed	

DNACJ236S_Reg_167	Verify SSM Connection Mode :On-Prime CSSM with 9800-40 model controller.	To Verify SSM Connection Mode :Direct with 9800-40 model controller.	Passed	
DNACJ236S_Reg_168	Verify SSM Connection Mode :On-Prime CSSM with 9800-80 model controller.	To Verify SSM Connection Mode :Direct with 9800-80 model controller.	Passed	
DNACJ236S_Reg_169	Verify SSM Connection Mode :On-Prime CSSM with 9800-L model controller.	To Verify SSM Connection Mode :Direct with 9800-L model controller.	Passed	

All Data Report - Inventory and SWIM

Logical ID	Title	Description	Status	Defect ID
DNACJ236S_Reg_170	Generate the Inventory report as PDF format	To Check the report generated as PDF format or not	Passed	
DNACJ236S_Reg_171	Generate the Inventory report as CSV format	To Check the report generated as CSV format or not	Passed	
DNACJ236S_Reg_172	Generate the Inventory report as TDE format	To Check the report generated as TDE format or not	Passed	
DNACJ236S_Reg_173	Generate the Inventory report with schedule time as now	To Check the report generated in schedule now time	Passed	
DNACJ236S_Reg_174	Generate the Inventory report with schedule time as Run later	To Check the report generated in schedule later time	Passed	
DNACJ236S_Reg_175	Generate the Inventory report with schedule time as Run Recurring option	To Check the report generated in schedule recurring time	Passed	
DNACJ236S_Reg_176	Generate the Inventory report with email notification	To Verify the notification generated or not with valid report details	Passed	
DNACJ236S_Reg_177	Generate the Inventory report with webhook notification	To Verify the notification generated or not with valid report details	Passed	
DNACJ236S_Reg_178	Generate the Inventory report after deleted all the devices in DNAC	To validate the report details shown or not after deleted the device in DNAC	Passed	
DNACJ236S_Reg_179	Generate the SWIM report as PDF format	To Check the report generated as PDF format or not	Passed	

DNACJ236S_Reg_180	Generate the SWIM report as CSV format	To Check the report generated as CSV format or not	Passed	
DNACJ236S_Reg_181	Generate the SWIM report as TDE format	To Check the report generated as TDE format or not	Passed	
DNACJ236S_Reg_182	Generate the SWIM report with schedule time as now	To Check the report generated in schedule now time	Passed	
DNACJ236S_Reg_183	Generate the SWIM report with schedule time as Run later	To Check the report generated in schedule later time	Passed	
DNACJ236S_Reg_184	Generate the SWIM report with schedule time as Run Recurring option	To Check the report generated in schedule recurring time	Passed	
DNACJ236S_Reg_185	Generate the SWIM report with email notification	To Verify the notification generated or not with valid report details	Passed	
DNACJ236S_Reg_186	Generate the SWIM report with webhook notification	To Verify the notification generated or not with valid report details	Passed	
DNACJ236S_Reg_187	Generate the SWIM report after deleted all the devices in DNAC	To validate the report details shown or not after deleted the device in DNAC	Passed	
DNACJ236S_Reg_188	Generate the SWIM report without performing SWIM operation	To validate the report details shown or not without performing the SWIM operation	Passed	
DNACJ236S_Reg_189	Create report in English UI and validate the details in Japanese UI	To check details are shown or not in Japanese UI	Passed	

3D Maps Enhancements Phase 2

Logical ID	Title	Description	Status	Defect ID
DNACJ236S_Reg_190	Heatmap must incorporate effect of AP location, txPower, elevation and azimuth	Verify if changes reflected or not	Passed	
DNACJ236S_Reg_191	User can select multiple APs and see the cumulative coverage of these Aps	Verify if changes reflected or not	Passed	
DNACJ236S_Reg_192	Support multiple radios per AP on the same band	Verify if changes reflected or not	Passed	
DNACJ236S_Reg_193	Heatmap must incorporate antenna propagation pattern	Verify if changes reflected or not	Passed	
DNACJ236S_Reg_194	UI control for channels and channel display	Verify if changes reflected or not	Passed	
DNACJ236S_Reg_195	change the AP type	Verify if we can change the AP type	Passed	
DNACJ236S_Reg_196	Ability to control AP position & height	Verify if we can move the AP position on the 3d Floor map and modify its height as well and as well in 2d mode	Passed	
DNACJ236S_Reg_197	Floor level RF model selection granularity	Verify if we are able to get floor level RF model in case of multi floor building	Passed	
DNACJ236S_Reg_198	Ability to control AP Tx Power level & Channel	Verify if we change the TX power and channel, we can see it on the 3d floor map	Passed	

DNACJ236S_Reg_199	Ability to control external antenna type	Verify if we can select the type of external antenna - omni directional, bi-directional, etc	Passed	
DNACJ236S_Reg_200	Ability to control the camera in first person mode (fly controls)	Verify if ability is there to get regular FOV and a wide angle FOV	Passed	
DNACJ236S_Reg_201	Clip plane default position must align with building's bounding box	Verify if default position is aligned with buildings bounding box	Passed	
DNACJ236S_Reg_202	Ability to control the camera such that it orbits around a target (orbit controls)	Verify if we can control camera around a target	Passed	
DNACJ236S_Reg_203	Support near/far clip planes in 3 dimensions for point cloud and isosurface visualizations	verify support is available for near/far clip plans in 3D	Passed	
DNACJ236S_Reg_204	Ability to save custom view settings	Verify if we can save customer view settings and retrieve them	Passed	
DNACJ236S_Reg_205	Ability to control the SLA target for Signal Strength (default: TBD) and SNR (default:TBD)	Verify SLA control knob for RSSI & SNR	Passed	
DNACJ236S_Reg_206	Insight on coverage gaps (substantiated by sensor ray visualization)	Verify coverage gaps from Sensor(ray visualization)	Passed	
DNACJ236S_Reg_207	Insights Infra: Ability to hyperlink insight into chase camera view of 3D visualization	Verify hyperlink of insight to chase camera(3D)	Passed	
DNACJ236S_Reg_208	3D floor data can be entered directly into DNAC using the Maps wall/obstacle drawing function	Verify manual 3D floor data can be entered & saved	Passed	

DNACJ236S_Reg_209	3D Rendering of Building Geometry with multi-floor and single floor view support	Verify rendering of building geometry (single,multi)	Passed	
-------------------	--	--	--------	--

Worst Interferer

Logical ID	Title	Description	Status	Defect ID
DNACJ236S_Reg_210	Generate the Worst Interferer report as CSV format	To Check the report generated as CSV format or not	Passed	
DNACJ236S_Reg_211	Generate the Worst Interferer report as JSON format	To Check the report generated as JSON format or not	Passed	
DNACJ236S_Reg_212	Generate the Worst Interferer report as TDE format	To Check the report generated as TDE format or not	Passed	
DNACJ236S_Reg_213	Generate the Worst Interferer report with schedule time as Run now	To Check the report generated in schedule Run now time	Passed	
DNACJ236S_Reg_214	Generate the Worst Interferer report with schedule time as Run later(One-Time)	To Check the report generated in schedule Run Later time	Passed	
DNACJ236S_Reg_215	Generate the Worst Interferer report with schedule time as Run recurring	To Check the report generated in schedule Run recurring time	Passed	
DNACJ236S_Reg_216	Generate the Worst interferer report with email notification	To Verify the notification generated or not with valid report details	Passed	
DNACJ236S_Reg_217	Generate the Worst interferer report with webhook notification	To Verify the notification generated or not with valid report details	Passed	
DNACJ236S_Reg_218	Duplicate report option using existing report	To duplicate report option using existing report	Passed	
DNACJ236S_Reg_219	Delete report using delete option under action tab	To Delete report using delete option under action tab	Passed	

DNACJ236S_Reg_220	Adding multiple locations during report generation.	To add multiple locations during report generation.	Passed	
DNACJ236S_Reg_221	Validate details in generated report	To Validate details in generated report	Passed	
DNACJ236S_Reg_222	Verify Interferer details in generated report.	To Verify Interferer details in generated report.	Passed	
DNACJ236S_Reg_223	Generating interference in APs connected to eWLC and check the report in DNAC	To generate interference in Aps connected to eWLC and check the report in DNAC	Passed	
DNACJ236S_Reg_224	Associate a 9105 AP to eWLC and generating interference report	To associate a 9105 AP to eWLC and generating interference report	Passed	
DNACJ236S_Reg_225	Associate a 9120 AP to eWLC and generating interference report	To associate a 9120 AP to eWLC and generating interference report	Passed	
DNACJ236S_Reg_226	Associate a 9130 AP to eWLC and generating interference report	To associate a 9130 AP to eWLC and generating interference report	Passed	

Called Station ID

Logical ID	Title	Description	Status	Defect ID
DNACJ236S_Reg_227	Configure radius-server wireless attribute call station id for authentication and accounting with "ap-name-ssid"	To Configure radius-server wireless attribute call station id for authentication and accounting with "ap-name-ssid"	Passed	
DNACJ236S_Reg_228	Configure radius-server wireless attribute call station id for authentication and accounting with "ap-ethmac-ssid"	To Configure radius-server wireless attribute call station id for authentication and accounting with "ap-ethmac-ssid"	Passed	
DNACJ236S_Reg_229	Configure radius-server wireless attribute call station id for authentication and accounting with "ap-group-name"	To Configure radius-server wireless attribute call station id for authentication and accounting with "ap-group-name"	Passed	
DNACJ236S_Reg_230	Configure radius-server wireless attribute call station id for authentication and accounting with "ap-macaddress-ssid"	To Configure radius-server wireless attribute call station id for authentication and accounting with "ap-macaddress-ssid"	Passed	
DNACJ236S_Reg_231	Configure radius-server wireless attribute call station id for authentication and accounting with "ap-macaddress"	To Configure radius-server wireless attribute call station id for authentication and accounting with "ap-macaddress"	Passed	
DNACJ236S_Reg_232	Configure radius-server wireless attribute call station id for authentication and accounting with "ap-ethmac-only"	To Configure radius-server wireless attribute call station id for authentication and accounting with "ap-ethmac-only"	Passed	

DNACJ236S_Reg_233	Configure radius-server wireless attribute call station id for authentication and accounting with “ap-location”	To Configure radius-server wireless attribute call station id for authentication and accounting with “ap-location”	Passed	
DNACJ236S_Reg_234	Configure radius-server wireless attribute call station id for authentication and accounting with “ap-name-ssid” with different networks	To Configure radius-server wireless attribute call station id for authentication and accounting with “ap-name-ssid” with different networks	Passed	
DNACJ236S_Reg_235	configure different servers for authentication and accounting of attribute	To configure different servers for authentication and accounting of attribute	Passed	
DNACJ236S_Reg_236	configuring both AAA and local authentication	To configuring both AAA and local authentication	Passed	
DNACJ236S_Reg_237	Verify Downgrade and upgrade impacted while configuring called station id for authentication and accounting	To verify Downgrade and upgrade impacted while configuring called station id for authentication and accounting	Passed	
DNACJ236S_Reg_238	Verify HA active to standby config impacts when configuring called station id for authentication and accounting	To verify config impact HA active to standby when configuring called station id for authentication and accounting	Passed	
DNACJ236S_Reg_239	Verify active to standby to active config impact when configuring called station id for authentication and accounting	To verify config impact when active to standby to active when configuring called station id for authentication and accounting	Passed	

DNACJ236S_Reg_240	Verify by changing mac address format in attribute and check config impact "radius-server attribute 31 mac format ? "	To Verify the changing of mac address format in attribute and check config	Passed	
DNACJ236S_Reg_241	Configure radius-server wireless attribute call station id for authentication and accounting with "ap-name-ssid"with mac filtering configured in AAA	To Configure mac filtering and verify client connectivity	Passed	
DNACJ236S_Reg_242	Verify Editing changes are applying while configuring radius-server wireless attribute call station id for authentication and accounting with "ap-name "with mac filtering configured in AAA	To Verify Editing changes are applying while configuring radius-server wireless attribute call station id for authentication and accounting with "ap-name"	Passed	
DNACJ236S_Reg_243	Configure radius-server wireless attribute call station id for authentication and accounting with "ap-name-ssid "with Mobility configuration	Configure radius-server wireless attribute call station id for authentication and accounting with "ap-name-ssid "with Mobility configuration	Passed	

Support configuration of advanced WLAN parameters

Logical ID	Title	Description	Status	Defect ID
DNACJ236S_Reg_244	Configure SSID creation with AAA Override- Enterprise level for WPA2 Security	To configure SSID creation with AAA Override- Enterprise level for WPA2 Security	Passed	
DNACJ236S_Reg_245	Configure SSID creation with AAA Override- Enterprise level for WPA3 Security	To configure SSID creation with AAA Override- Enterprise level for WPA3 Security	Passed	
DNACJ236S_Reg_246	Configure SSID creation with AAA Override- Enterprise level for WPA2+WPA3 Security	To configure SSID creation with AAA Override- Enterprise level for WPA2+WPA3 Security	Passed	
DNACJ236S_Reg_247	Configure SSID creation with AAA Override -Personal for WPA2 Security	To configure SSID creation with AAA Override -Personal for WPA3 Security	Passed	
DNACJ236S_Reg_248	Configure SSID creation with AAA Override -Personal for WPA3 Security	To configure SSID creation with AAA Override- Personal for WPA2 Security	Passed	
DNACJ236S_Reg_249	Configure SSID creation with AAA Override -Personal for WPA2+WPA3 Security	To configure SSID creation with AAA Override -Personal for WPA2+WPA3 Security	Passed	
DNACJ236S_Reg_250	Configure MPSK -SSID creation with Personal for WPA2 Security	To configure MPSK -SSID creation with Personal for WPA2 Security	Passed	
DNACJ236S_Reg_251	Configure SSID creation with AAA Override for Open Secured Security	To configure SSID creation with AAA Override for Open Secured Security	Passed	
DNACJ236S_Reg_252	Configure SSID creation with AAA Override for Open Security	To configure SSID creation with AAA Override for Open Security	Passed	

DNACJ236S_Reg_253	Enable the PMF for SSID Creation - Enterprise level security	To enable the PMF for SSID Creation for Enterprise level security	Passed	
DNACJ236S_Reg_254	Enable the PMF for SSID Creation Personal level security	To enable the PMF for SSID Creation for Personal level security	Passed	
DNACJ236S_Reg_255	Enable/Disable the CHD for SSID Creation - Enterprise level security	To enable/disable the CHD for SSID Creation for Enterprise level security	Passed	
DNACJ236S_Reg_256	Enable/Disable the CHD for SSID Creation -Personal level security	To enable/disable the CHD for SSID Creation for Personal level security	Passed	
DNACJ236S_Reg_257	Connect Windows Client and verify Advanced wan parameters	Connect Windows Client and verify Advanced wan parameters	Passed	
DNACJ236S_Reg_258	Connect Android Client and verify Advanced wlan parameters	Connect Android Client and verify Advanced wlan parameters	Passed	
DNACJ236S_Reg_259	Connect MAC Client and verify Advanced wlan parameters	Connect MAC Client and verify Advanced wlan parameters	Passed	
DNACJ236S_Reg_260	Connect IOS Client and verify Advanced wlan parameters	Connect IOS Client and verify Advanced wlan parameters	Passed	

Site 360/Dashboard Landing Page

Logical ID	Title	Description	Status	Defect ID
DNACJ236S_Reg_261	Adding network devices in DNAC	To add network devices like switches, Controllers to DNAC and check if the network devices gets added to DNAC or not	Passed	
DNACJ236S_Reg_262	View the number of devices in given site	To view the total number of devices added in the given site	Passed	
DNACJ236S_Reg_263	Check the details of Network Devices in the specific site	To check the details of Network Devices in the specific site	Passed	
DNACJ236S_Reg_264	the Detailed view of network Device- Device 360	To view the Detailed view of network Device- Device 360	Passed	
DNACJ236S_Reg_265	the map and comparison view of network Device- Device 360	To view the map and comparison view of network Device- Device 360	Passed	
DNACJ236S_Reg_266	the map and comparison- Table view of network Device - Device 360	To view the map and comparison- Table view of network Device- Device 360	Passed	
DNACJ236S_Reg_267	the map and comparison - Map view of network Device- Device 360	To view the map and comparison- Map view of network Device- Device 360	Passed	
DNACJ236S_Reg_268	Detailed Information of Network Device- Device 360	To view the detailed Information of Network Device- Device 360	Passed	
DNACJ236S_Reg_269	Detailed Information of Radio Frequency- Device 360	To view the detailed Information of Radio Frequency- Device 360	Passed	

DNACJ236S_Reg_270	Detailed Information of Ethernet- Device 360	To view the detailed Information of Ethernet Device- Device 360	Passed	
DNACJ236S_Reg_271	Network Heatmap page through Site 360	To view the Network heatmap page through Site 360	Passed	
DNACJ236S_Reg_272	Detail Information of Interfaces-Device 360	To view the detailed Information of Interfaces-Device 360	Passed	
DNACJ236S_Reg_273	Detail Information of Controller Device -Device 360	To view the detailed Information of Controller Device -Device 360	Passed	

Support for recurring discovery

Logical ID	Title	Description	Status	Defect ID
DNACJ236S_Reg_274	Enable discovery using recurrence option	To enable discovery using recurrence option	Passed	
DNACJ236S_Reg_275	Schedule recurrence using daily option	To schedule recurrence using daily option	Passed	
DNACJ236S_Reg_276	Schedule recurrence using weekly option	To schedule recurrence using weekly option	Passed	
DNACJ236S_Reg_277	Schedule recurring job using CDP option	To schedule job using CDP option	Passed	
DNACJ236S_Reg_278	Schedule recurring job using LLDP option	To schedule job using LLDP option	Passed	
DNACJ236S_Reg_279	Verify if new devices are discovered during recurrence	To verify if new devices are discovered during recurrence	Passed	
DNACJ236S_Reg_280	Schedule more than recurring discovery jobs	To schedule more than recurring discovery jobs	Passed	
DNACJ236S_Reg_281	Schedule discovery job with incorrect time range	To schedule discovery job with incorrect time range	Passed	
DNACJ236S_Reg_282	Verify the deletion of recurring job	To verify the deletion of recurring job	Passed	
DNACJ236S_Reg_283	Duplicate the recurring job and edit to create another job	To duplicate the recurring job and edit to create another job	Passed	
DNACJ236S_Reg_284	Delete devices from inventory and check if its discovered again during recurring discovery	To delete devices from inventory and check if its discovered again during recurring discovery	Passed	

DNACJ236S_Reg_285	Edit recurring discovery job from tasks page	To edit recurring discovery job from tasks page	Passed	
DNACJ236S_Reg_286	Cancel recurring discovery job from tasks page	To cancel recurring discovery job from tasks page	Passed	

Network Insights - Radio Insights based on Client Experience

Logical ID	Title	Description	Status	Defect ID
DNACJ236S_Reg_287	Add 9120 AP to DNAC and validate the details in Network insights.	To Validate the Network service Analytics for 9120 AP	Passed	
DNACJ236S_Reg_288	Validate the Issue count gradient in network insights.	To Validate the Issue count gradient in network insights.	Passed	
DNACJ236S_Reg_289	Add 9115 AP to DNAC and validate the details in Network insights.	To Validate the Network service Analytics of Insights for 9115 AP	Passed	
DNACJ236S_Reg_290	Check the Client load per week in network insights.	To Check the Client load per week in network insights.	Passed	
DNACJ236S_Reg_291	Check the network insights filters for capacity ,coverage & throughput.	To Check the network insights filters for capacity ,coverage & throughput.	Passed	
DNACJ236S_Reg_292	Add 9130 AP to DNAC and validate the details in Network insights.	To Validate the Network service Analytics for 9130 AP	Passed	
DNACJ236S_Reg_293	Add 9105 AP to DNAC and validate the details in Network insights.	To Validate the Network service Analytics for 9105 AP	Passed	
DNACJ236S_Reg_294	Validate 9120 AP in Network Heatmap with 2.4Ghz band	To Validate the Network service Analytics Heat map for 9120 AP	Passed	
DNACJ236S_Reg_295	Validate 9115 AP in Network Heatmap with 5Ghz band	To Validate the Network service Analytics Heat map for 9115 AP	Passed	
DNACJ236S_Reg_296	Validate 9130 AP in Network Heatmap with 2.4Ghz band	To Validate the Network service Analytics Heat map for 9130 AP	Passed	

DNACJ236S_Reg_297	Validate 9105 AP in Network Heatmap with 5Ghz band	To Validate the Network service Analytics Heat map for 9105 AP	Passed	
DNACJ236S_Reg_298	Compare 9120 AP & 9130 AP in peer networks	To compare the AP's in Network service Analytics	Passed	
DNACJ236S_Reg_299	Compare 9120 AP & 9115 AP in peer networks	To compare the AP's in Network service Analytics	Passed	
DNACJ236S_Reg_300	Compare 9120 AP & 9105 AP in peer networks	To compare the AP's in Network service Analytics	Passed	
DNACJ236S_Reg_301	Compare 9115 AP & 9105 AP in peer networks	To compare the AP's in Network service Analytics	Passed	
DNACJ236S_Reg_302	Compare 9115 AP & 9130 AP in peer networks	To compare the AP's in Network service Analytics	Passed	
DNACJ236S_Reg_303	Compare 9130 AP & 9105 AP in peer networks	To compare the AP's in Network service Analytics	Passed	
DNACJ236S_Reg_304	Create Two Networks with different types AP's	To compare the Networks in Network service Analytics	Passed	

Inventory: Support for Maintenance mode

Logical ID	Title	Description	Status	Defect ID
DNACJ236S_Reg_305	Adding different network devices in DNAC	To add network devices like switches, Controllers to DNAC and check if the network devices gets added to DNAC or not	Passed	
DNACJ236S_Reg_306	Provisioning a the network device through inventory page via DNAC	To provision the network device via DNAC through the option in inventory page	Passed	
DNACJ236S_Reg_307	Scheduling Maintenance for eWLC 9800-40 device	To schedule Maintenance for the eWLC 9800-40 device and check if the device is moved to Maintenance mode or not	Passed	
DNACJ236S_Reg_308	Scheduling Maintenance for eWLC 9800-80 device	To schedule Maintenance for the eWLC 9800-80 device and check if the device is moved to Maintenance mode or not	Passed	
DNACJ236S_Reg_309	Scheduling Maintenance for eWLC 9800-L device	To schedule Maintenance for the eWLC 9800-L device and check if the device is moved to Maintenance mode or not	Passed	
DNACJ236S_Reg_310	Scheduling Maintenance for eWLC 9800-CL device	To schedule Maintenance for the eWLC 9800-CL device and check if the device is moved to Maintenance mode or not	Passed	

DNACJ236S_Reg_311	Configuring eWLC AP to Maintenance state and check the behaviour	To schedule a Maintenance for the AP connected in eWLC and check if the Maintenance is applied for it or not	Passed	
DNACJ236S_Reg_312	Configuring EWC AP to Maintenance state and check the behaviour	To schedule a Maintenance for the AP connected in EWC and check if the Maintenance is applied for it or not	Passed	
DNACJ236S_Reg_313	Configuring Maintenance state for device with end times given in hours	To make a network device to maintenance state with end of maintenance in hours	Passed	
DNACJ236S_Reg_314	Configuring Maintenance state for device with end times in date and time	To make a network device to maintenance state with end of maintenance in days and hours	Passed	
DNACJ236S_Reg_315	Maintenance mode with recurrence as daily	To schedule the maintenance for the eWLC device with recurrence as daily	Passed	
DNACJ236S_Reg_316	Maintenance mode with recurrence as Weekly	To schedule the maintenance for the eWLC device with recurrence as Weekly and check if the mode is activated the number of times specified	Passed	
DNACJ236S_Reg_317	Scheduling Maintenance for eWLC device in HA mode	To schedule Maintenance for the eWLC device which has HA pair in active and check if the device is moved to Maintenance mode or not	Passed	

DNACJ236S_Reg_318	Schedule Maintenance for the eWLC device which is not reached from DNAC	To schedule Maintenance for the eWLC device which is not reachable from DNAC and check if the device is moved to Maintenance mode or not	Passed	
DNACJ236S_Reg_319	Schedule Maintenance for the EWC device which is not reached from DNAC	To schedule Maintenance for the EWC device which is not reachable from DNAC and check if the device is moved to Maintenance mode or not	Passed	
DNACJ236S_Reg_320	Scheduling Maintenance for the eWLC device for which Netconf is given wrongly	To scheduling maintenance for the eWLC device for which Netconf is given wrongly	Passed	
DNACJ236S_Reg_321	Scheduling Maintenance for the EWC device for which Netconf is given wrongly	To scheduling maintenance for the EWC device for which Netconf is given wrongly	Passed	
DNACJ236S_Reg_322	Managing the eWLC device in the Maintenance mode	To managing the eWLC device in the Maintenance mode	Passed	
DNACJ236S_Reg_323	Managing the EWC device in the Maintenance mode	To managing the EWC device in the Maintenance mode	Passed	

AP Reboot for Troubleshooting

Logical ID	Title	Description	Status	Defect ID
DNACJ236S_Reg_324	Selecting 9120 AP for reboot	To Verify the 9120 Ap rebooted or not	Passed	
DNACJ236S_Reg_325	Selecting 9130 AP for reboot	To Verify the 9130 Ap rebooted or not	Passed	
DNACJ236S_Reg_326	Selecting 9115 AP for reboot	To Verify the 9115 Ap rebooted or not	Passed	
DNACJ236S_Reg_327	Selecting 9105 AP for reboot	To Verify the 9105 Ap rebooted or not	Passed	
DNACJ236S_Reg_328	Selecting multiple AP's belonging to the same Controller	To Verify the Ap's rebooted or not while ap's connected to same controller	Passed	
DNACJ236S_Reg_329	Selecting multiple AP's belonging to different Controller	To Verify the Ap's rebooted or not while ap's connected to different controller	Passed	
DNACJ236S_Reg_330	Selecting EWC master AP for reboot	To Verify the EWC master Ap rebooted or not	Passed	
DNACJ236S_Reg_331	Selecting NON-AP device for reboot option	To Verify non-ap devices rebooted or not	Passed	
DNACJ236S_Reg_332	Selecting more than 200 Aps for Reboot	To Verify the Ap's selected or not beyond the max limit	Passed	
DNACJ236S_Reg_333	APs selected for reboot are unreachable	To verify unreachable ap's selected for reboot or not	Passed	
DNACJ236S_Reg_334	Selecting Flex connect AP for reboot	To verify Flex connect Ap reboot or not	Passed	
DNACJ236S_Reg_335	Ap's selected for reboot are already part of in-progress provision flow	To verify Ap reboot or not which is already part of in provision flow	Passed	

DNACJ236S_Reg_336	Selecting APs & unsupported device for reboot	To Verify error shown or not for unsupported devices	Passed	
DNACJ236S_Reg_337	AP selected for reboot with schedule now option selected in the scheduler side bar	To verify ap rebooted with schedule now option	Passed	
DNACJ236S_Reg_338	AP selected for reboot with schedule later option selected in the scheduler side bar	To verify ap rebooted with schedule later option	Passed	
DNACJ236S_Reg_339	Selecting un-provisioned AP for reboot	To verify un-provisioned ap rebooted or not	Passed	
DNACJ236S_Reg_340	Verifying ap 2.4 ghz radio configuration after ap reboot	To verify 2.4 ghz configuration changed or not after ap reboot	Passed	
DNACJ236S_Reg_341	Verifying ap 5 ghz radio configuration after ap reboot	To verify 5 ghz configuration changed or not after ap reboot	Passed	
DNACJ236S_Reg_342	Verifying security type of client after ap reboot	To verify security type configuration changed or not after ap reboot	Passed	
DNACJ236S_Reg_343	Ap selected for continuous reboot	To verify crash happen or not during continuous reboot	Passed	

Busiest Client Report

Logical ID	Title	Description	Status	Defect ID
DNACJ236S_Reg_344	Default value check	To check default value	Passed	
DNACJ236S_Reg_345	Test report with 'Global' for location filter	To test report with 'Global' for location filter	Passed	
DNACJ236S_Reg_346	Test report with single area for location filter	To test report with single area for location filter	Passed	
DNACJ236S_Reg_347	Test report with multiple areas for location filter	To test report with multiple areas for location filter	Passed	
DNACJ236S_Reg_348	Test report with single building for location filter	To test report with single building for location filter	Passed	
DNACJ236S_Reg_349	Test report with multiple buildings for location filter	To test report with multiple buildings for location filter	Passed	
DNACJ236S_Reg_350	Test report with single floor for location filter	To test report with single floor for location filter	Passed	
DNACJ236S_Reg_351	Test report with multiple floors for location filter	To test report with multiple floors for location filter	Passed	
DNACJ236S_Reg_352	Test report with mixed area, building, floor for location filter	To test report with mixed area, building, floor for location filter	Passed	
DNACJ236S_Reg_353	Test WLC filter-single	To test WLC filter-single	Passed	
DNACJ236S_Reg_354	Test WLC filter-multiple	To test WLC filter-multiple	Passed	
DNACJ236S_Reg_355	Test with both WLC and Location filter	To test with both WLC and Location filter	Passed	
DNACJ236S_Reg_356	Test report with only one field for content	To test report with only one field for content	Passed	

DNACJ236S_Reg_357	Test report with subset field for content	To test report with subset field for content	Passed	
DNACJ236S_Reg_358	Test report sort by 'client Name'	To test report sort by 'client Name'	Passed	
DNACJ236S_Reg_359	Test report sort by 'Rx Utilization'	To test report sort by 'Rx Utilization'	Passed	
DNACJ236S_Reg_360	Test report sort by 'Tx Utilization'	To test report sort by 'Tx Utilization'	Passed	
DNACJ236S_Reg_361	Test report sort by 'Channel Utilization'	To test report sort by 'Channel Utilization'	Passed	
DNACJ236S_Reg_362	Test report sort by 'Client Count'	To test report sort by 'Client Count'	Passed	
DNACJ236S_Reg_363	Test report schedule function	To test report schedule function	Passed	
DNACJ236S_Reg_364	Verify report data accuracy with different type of clients	To verify report data accuracy with different type of clients	Passed	
DNACJ236S_Reg_365	Test with Client connecting to 2 radios	To test with Client connecting to 2 radios	Passed	
DNACJ236S_Reg_366	Test with Client connecting to 3 radios	To test with Client connecting to 3 radios	Passed	
DNACJ236S_Reg_367	Verify report data accuracy with client radio change band within an hour	To verify report data accuracy with client radio change band within an hour	Passed	
DNACJ236S_Reg_368	Verify report data accuracy with client radio change band more than an hour	To verify report data accuracy with client radio change band more than an hour	Passed	
DNACJ236S_Reg_369	Verify report data accuracy with client radio change band more than a day	To verify report data accuracy with client radio change band more than a day	Passed	

Troubleshoot Certification - WLC Unmonitored

Logical ID	Title	Description	Status	Defect ID
DNACJ236S_Reg_370	Add network devices like switches, Controllers to DNAC and check if the network devices gets added to DNAC or not	To add network devices like switches, Controllers to DNAC and check if the network devices gets added to DNAC or not	Passed	
DNACJ236S_Reg_371	Add 9800-80 controller and check if the devices gets added to DNAC or not	To add 9800-80 controller and check if the devices gets added to DNAC or not	Passed	
DNACJ236S_Reg_372	Check the Health Score of the controller and Do Unmonitored state analysis if the device is in unmonitored state	To check the Health Score of the controller and Do Unmonitored state analysis if the device is in unmonitored state	Passed	
DNACJ236S_Reg_373	Add 9800-40 controller and check if the devices gets added to DNAC or not	To add 9800-40 controller and check if the devices gets added to DNAC or not	Passed	
DNACJ236S_Reg_374	Check the Health Score of the controller and Do Unmonitored state analysis if the device is in unmonitored state	To check the Health Score of the controller and Do Unmonitored state analysis if the device is in unmonitored state	Passed	
DNACJ236S_Reg_375	Add 9800-L controller and check if the devices gets added to DNAC or not	To add 9800-L controller and check if the devices gets added to DNAC or not	Passed	

DNACJ236S_Reg_376	Check the Health Score of the controller and Do Unmonitored state analysis if the device is in unmonitored state	To check the Health Score of the controller and Do Unmonitored state analysis if the device is in unmonitored state	Passed	
DNACJ236S_Reg_377	Add 9800-CL controller and check if the devices gets added to DNAC or not	To add 9800-CL controller and check if the devices gets added to DNAC or not	Passed	
DNACJ236S_Reg_378	Check the Health Score of the controller and Do Unmonitored state analysis if the device is in unmonitored state	To check the Health Score of the controller and Do Unmonitored state analysis if the device is in unmonitored state	Failed	CSCwe98314
DNACJ236S_Reg_379	Add Aireos controller and check if the devices gets added to DNAC or not	To add Aireos controller and check if the devices gets added to DNAC or not	Passed	
DNACJ236S_Reg_380	Check the Health Score of the controller and Do Unmonitored state analysis if the device is in unmonitored state	To check the Health Score of the controller and Do Unmonitored state analysis if the device is in unmonitored state	Passed	
DNACJ236S_Reg_381	Do the Assurance Telemetry Analysis from Tools page	To do the Assurance Telemetry Analysis from Tools page	Passed	
DNACJ236S_Reg_382	Check Whether only No Health devices are shown in the Assurance Telemetry Analysis	To check Whether only No Health devices are shown in the Assurance Telemetry Analysis	Passed	
DNACJ236S_Reg_383	Check whether all the assurance configuration check are done for IOS device	To check whether all the assurance configuration check are done for IOS device	Passed	

DNACJ236S_Reg_384	Check whether all the assurance configuration check are done for AireOS device	To check whether all the assurance configuration check are done for AireOS device	Passed	
-------------------	--	---	--------	--

Support for Custom Policy Tag for C9800

Logical ID	Title	Description	Status	Defect ID
DNACJ236S_Reg_385	Configuring DNAC with Network devices, clients, access points.	To configure DNAC with Network devices, clients, access points.	Passed	
DNACJ236S_Reg_386	Configure custom policy tag and provisioning the same to the eWLC	To check if the custom policy tag is configured in DNAC and successfully provisioned or not	Passed	
DNACJ236S_Reg_387	Configure custom policy tag and provisioning the same to the 9800-80 eWLC	To check if the custom policy tag is configured in DNAC and successfully provisioned or not	Passed	
DNACJ236S_Reg_388	Configure custom policy tag and provisioning the same to the 9800-CL eWLC	To check if the custom policy tag is configured in DNAC and successfully provisioned or not	Passed	
DNACJ236S_Reg_389	Configure custom policy tag and provisioning the same to the 9800-L eWLC	To check if the custom policy tag is configured in DNAC and successfully provisioned or not	Passed	
DNACJ236S_Reg_390	Deleting the custom policy tag created .	To check if the custom policy tag is deleted or not	Passed	
DNACJ236S_Reg_391	Connecting a window client to a SSID mapped with a custom policy tag created from DNAC	To connect a window client to a SSID mapped with a custom policy tag created from DNAC	Passed	
DNACJ236S_Reg_392	Connecting a Windows Surface client to a SSID mapped with a custom policy tag created from DNAC	To connect a Window Surface client to a SSID mapped with a custom policy tag created from DNAC	Passed	

DNACJ236S_Reg_393	Connecting a Android client to a SSID mapped with a custom policy tag created from DNAC	To connect a Android client to a SSID mapped with a custom policy tag created from DNAC	Passed	
DNACJ236S_Reg_394	Connecting a iPhone client to a SSID mapped with a custom policy tag created from DNAC	To connect a iPhone client to a SSID mapped with a custom policy tag created from DNAC	Passed	
DNACJ236S_Reg_395	To connect a MAC os client to a SSID mapped with a custom policy tag created from DNAC	To connect a MAC os client to a SSID mapped with a custom policy tag created from DNAC	Passed	
DNACJ236S_Reg_396	Configuring a SSID with WPA 3 SAE security and connecting a window client to a SSID mapped with a custom policy tag created from DNAC	To configuring a SSID with WPA 3 SAE security and connecting a window client to a SSID mapped with a custom policy tag created from DNAC	Passed	
DNACJ236S_Reg_397	Configuring a SSID with WPA 3 802.1x security and connecting a window client to a SSID mapped with a custom policy tag created from DNAC	To configuring a SSID with WPA 3 802.1x security and connecting a window client to a SSID mapped with a custom policy tag created from DNAC	Passed	
DNACJ236S_Reg_398	Configuring a SSID with WPA 3 OWE security and connecting a window client to a SSID mapped with a custom policy tag created from DNAC	To configuring a SSID with WPA 3 OWE security and connecting a window client to a SSID mapped with a custom policy tag created from DNAC	Passed	
DNACJ236S_Reg_399	Configuring a SSID with WPA 2 PSK security and connecting a window client to a SSID mapped with a custom policy tag created from DNAC	To configuring a SSID with WPA 2 PSK security and connecting a window client to a SSID mapped with a custom policy tag created from DNAC	Passed	

DNACJ236S_Reg_400	Configuring a SSID with WPA 2 802.1x security and connecting a window client to a SSID mapped with a custom policy tag created from DNAC	To configuring a SSID with WPA 2 802.1x security and connecting a window client to a SSID mapped with a custom policy tag created from DNAC	Passed	
DNACJ236S_Reg_401	Configuring a SSID with open security and connecting a window client to a SSID mapped with a custom policy tag created from DNAC	To configuring a SSID with Open security and connecting a window client to a SSID mapped with a custom policy tag created from DNAC	Passed	

Ability to manage multiple AP groups /Policy tags

Logical ID	Title	Description	Status	Defect ID
DNACJ236S_Reg_402	Create AP Zone for set of AP in DNAC	To create AP Zone for set of AP in DNAC	Passed	
DNACJ236S_Reg_403	Assign network profile to a specific floor with multiple APs	To assign network profile to a specific floor with multiple APs	Passed	
DNACJ236S_Reg_404	Check AP zone effect using 9100 AP models	To check AP zone effect using 9100 AP models	Passed	
DNACJ236S_Reg_405	Check AP zone effect using 4800,3800 AP models	To check AP zone effect using 4800,3800 AP models	Passed	
DNACJ236S_Reg_406	Check AP zone effect using 9800-40 controller	To check AP zone effect using 9800-40 controller	Passed	
DNACJ236S_Reg_407	Check AP zone effect using 9800L controller	To check AP zone effect using 9800L controller	Passed	
DNACJ236S_Reg_408	Check AP zone effect using 9800CL controller	To check AP zone effect using 9800CL controller	Passed	
DNACJ236S_Reg_409	Check AP zone effect using EWC controller	To check AP zone effect using EWC controller	Passed	
DNACJ236S_Reg_410	Check AP zone effect using 9800 HA controller	To check AP zone effect using 9800 HA controller	Passed	
DNACJ236S_Reg_411	Run report generation on the assigned floor and monitor the parameters	To run report generation on the assigned floor and monitor the parameters	Passed	
DNACJ236S_Reg_412	Verify using custom policy tags & RF tags	To verify using custom policy tags & RF tags	Passed	

Support AP refresh across different WLCs

Logical ID	Title	Description	Status	Defect ID
DNACJ236S_Reg_413	Provision network devices in DNAC using Inventory & PNP flow	To provision network devices in DNAC using Inventory & PNP flow	Passed	
DNACJ236S_Reg_414	Perform AP Refresh flow in DNAC and verify the details	To perform AP Refresh flow in DNAC and verify the details	Passed	
DNACJ236S_Reg_415	Check the report after Ap Refresh process is done	To verify AP details in report after ap replacement	Passed	
DNACJ236S_Reg_416	AP Refresh process using different model AP(9115 to 9130)	To verify AP Refresh with different AP model	Passed	
DNACJ236S_Reg_417	Verify AP refresh works fine for all model APs	Verify AP refresh works fine for all model APs	Passed	
DNACJ236S_Reg_418	Choosing new AP from same controller for AP refresh	To choose new AP from same controller for AP refresh	Passed	
DNACJ236S_Reg_419	Choosing new AP from different controller for AP refresh	To choose new AP from different controller for AP refresh	Passed	
DNACJ236S_Reg_420	Perform AP refresh process for bulk amount of AP's	To perform AP refresh process for bulk amount of AP's	Passed	
DNACJ236S_Reg_421	Perform AP refresh across different WLC models	To perform AP refresh across different WLC models	Passed	
DNACJ236S_Reg_422	Perform AP refresh using newer AP models like 9105	To perform AP refresh using newer AP models like 9105	Passed	

Channel Change Report

Logical ID	Title	Description	Status	Defect ID
DNACJ236S_Reg_423	Generate the report for the radio band 2.4 GHZ and check the details of the report	To check the report generated for radio band 2.4 GHZ and check details of the report	Passed	
DNACJ236S_Reg_424	Generate the report for the radio band 5 GHZ and check the details of the report	To check the report generated for radio band 5 GHZ and check details of the report	Passed	
DNACJ236S_Reg_425	Generate the report for the radio band 6 GHZ and check the details of the report	To check the report generated for radio band 6 GHZ and check details of the report	Passed	
DNACJ236S_Reg_426	Generate the report for the all radio bands and check the details of the report	To check the report generated for all radio bands and check details of the report	Passed	
DNACJ236S_Reg_427	Generate the report for the Scope is Global check the details of the report	To check the report generated for the Scope is Global and check details of the report	Passed	
DNACJ236S_Reg_428	Generate the report for the Scope for scope(multiple locations) check the details of the report	To check the report generated for the scope(multiple locations) is Global and check details of the report	Passed	CSCwe36435
DNACJ236S_Reg_429	Generate the report for file type as CSV check the details of the report	To check the report generated for the file type as CSV and check details of the report	Passed	
DNACJ236S_Reg_430	Generate the report for file type as Tableau Data Extract check the details of the report	To check the report generated for the file type as Tableau Data Extra and check details of the report	Passed	

DNACJ236S_Reg_431	Generate the report for file type as JSON check the details of the report	To check the report generated for the file type as JSON check details of the report	Passed	
DNACJ236S_Reg_432	Generate the report for time range is last 3 hours check the details of the report	To check the report generated for time range is last 3 hours check details of the report	Passed	
DNACJ236S_Reg_433	Generate the report for time range is last 24 hours check the details of the report	To check the report generated for time range is last 24 hours check details of the report	Passed	
DNACJ236S_Reg_434	Generate the report for time range is last 7 days check the details of the report	To check the report generated for time range is last 7 days check details of the report	Passed	
DNACJ236S_Reg_435	Generate the report for time range is last 30 days check the details of the report	To check the report generated for time range is last 30 days check details of the report	Passed	
DNACJ236S_Reg_436	Generate the report for time range is custom check the details of the report	To check the report generated for time range is custom check details of the report	Passed	
DNACJ236S_Reg_437	Generate the report for Schedule is Run Now and check the details of the report	To check the report generated for Schedule is Run Now and check details of the report	Passed	
DNACJ236S_Reg_438	Generate the report for Schedule is Run Later(one-time) and check the details of the report	To check the report generated for Schedule is Run Later(one-time) and check details of the report	Passed	
DNACJ236S_Reg_439	Generate the report for Schedule is Run Recurring and check the details of the report	To check the report generated for Schedule is Run Recurring and check details of the report	Passed	

DNACJ236S_Reg_440	Generate the report with email notification and check the details of the report	To check the report with email notification and check details of the report	Passed	
DNACJ236S_Reg_441	Generate the report with webhook notification and check the details of the report	To check the report with webhook notification and check details of the report	Failed	CSCwe91329
DNACJ236S_Reg_442	Generate the report with all radio bands and Schedule is Run Now check the details of the report	To check the report with all radio bands and Schedule is Run Now and check details of the report	Passed	
DNACJ236S_Reg_443	Generate the report with all radio bands and Scope is Global check the details of the report	To check the report with all radio bands and Scope is Global is Run Now and check details of the report	Passed	

Enhancements for mobility peer configuration

Logical ID	Title	Description	Status	Defect ID
DNACJ236S_Reg_444	Add peer to existing mobility group	Adding managed Peer into exiting mobility group. Added peers should get reflected into all existing managed peers	Passed	
DNACJ236S_Reg_445	Delete peer from existing mobility group	Deleting managed Peer into exiting mobility group. Deleted peers should get reflected into all existing managed peers	Passed	
DNACJ236S_Reg_446	Add OOB Peer into exiting mobility group.	Adding OOB Peer into exiting mobility group. Added peers should get reflected into all existing managed peers	Passed	
DNACJ236S_Reg_447	Configure multiple mobility group with same name	Verify the name applied to all the mobility group	Passed	
DNACJ236S_Reg_448	Modify the mobility group attributes	Verify the changes updated in mobility group or not	Passed	
DNACJ236S_Reg_449	Populate the mobility group attributes	Populating new mobility attributes : device Series, private IP.	Passed	
DNACJ236S_Reg_450	Verify the details in OOB page	Verify the mobility peer details shown correctly or not	Passed	
DNACJ236S_Reg_451	View the Mobility details from device.	Verify the mobility peer details from device shown correctly or not	Passed	
DNACJ236S_Reg_452	Configure the mobility group and reset the DNAC	Verify the mobility peer details after DNAC reset	Passed	

DNACJ236S_Reg_453	Configuring Mobility configuration in Controller	To verify the mobility configuration in controller	Passed	
DNACJ236S_Reg_454	Checking the Mobility configuration in DNAC	To verify whether the mobility configurations are showing or not in DNAC	Passed	
DNACJ236S_Reg_455	Changing the Mobility group name in controller-1 and check the controller's status in DNAC	To verify whether the controller status in DNAC by changing the mobility group Name.	Passed	
DNACJ236S_Reg_456	Checking the Mobility groups configuration in HA setup	To check the mobility group configurations in DNAC during HA	Passed	
DNACJ236S_Reg_457	Checking the Mobility configuration between lightweight to virtual controller in DNAC	To check whether the mobility happens between lightweight & Virtual controller	Passed	
DNACJ236S_Reg_458	Checking the mobility configuration between virtual to 9800 controller in DNAC	To check whether the mobility happens between 9800 & Virtual controller	Passed	
DNACJ236S_Reg_459	Verifying the mobility configuration with Different Radio types in DNAC	To verify whether Client is Moving between Controllers with Different Radio type or not	Passed	
DNACJ236S_Reg_460	Verifying the mobility configuration with same Radio types in DNAC	To verify whether Client is Moving between Controllers with same Radio type or not	Passed	
DNACJ236S_Reg_461	Monitoring mobility configuration in DNAC using Android Client	To verify whether the Android client details are showing in DNAC or not	Passed	

DNACJ236S_Reg_462	Monitoring mobility configuration in DNAC using iOS Client	To verify whether the iOS client details are showing in DNAC or not	Passed	
DNACJ236S_Reg_463	Monitoring mobility configuration in DNAC using Windows Client	To verify whether the Windows client details are showing in DNAC or not	Passed	
DNACJ236S_Reg_464	Monitoring mobility configuration in DNAC using Mac Client	To verify whether the Mac client details are showing in DNAC or not	Passed	
DNACJ236S_Reg_465	Add/update/delete mobility peer configuration in DNAC	To check whether the mobility Peer configurations are add/Update/delete in DNAC	Passed	

Support phase-2 Mesh configurations on wireless LAN controllers

Logical ID	Title	Description	Status	Defect ID
DNACJ236S_Reg_466	Configuring Mesh and provisioning the AP	To configure Mesh and provisioning the AP	Passed	
DNACJ236S_Reg_467	Verify Mesh AP all details in Device 360 page	To verify Mesh AP all details in Device 360 page	Passed	
DNACJ236S_Reg_468	Verify Mesh AP General Information in Device 360 page	To verify Mesh AP General Information in Device 360 page	Passed	
DNACJ236S_Reg_469	Verify Mesh AP Network Information in Device 360 page	To verify Mesh AP Network Information in Device 360 page	Passed	
DNACJ236S_Reg_470	Verify Mesh AP Rack Information in Device 360 page	To verify Mesh AP Rack Information in Device 360 page	Passed	
DNACJ236S_Reg_471	Verify Physical Neighbour Topology for RAP on Mesh AP 360 page	To verify Physical Neighbour Topology for RAP on Mesh AP 360 page	Passed	
DNACJ236S_Reg_472	Verify Physical Neighbour Topology for MAP on Mesh AP 360 page	To verify Physical Neighbour Topology for MAP on Mesh AP 360 page	Passed	
DNACJ236S_Reg_473	Verify Mesh AP tab added for MAP on AP 360 page	To verify Mesh AP tab added for MAP on AP 360 page	Passed	
DNACJ236S_Reg_474	Verify Mesh AP tab details on AP 360 page	To verify Mesh AP tab details on AP 360 page	Passed	
DNACJ236S_Reg_475	Configuring Mesh setup in 9115 AP from DNAC and verifying the same in eWLC	To configure mesh setup in 9115 AP from DNAC and check if the configuration are pushed to eWLC	Passed	

DNACJ236S_Reg_476	Configuring Mesh setup in 9120 AP from DNAC and verifying the same in eWLC	To configure mesh setup in 9120 AP from DNAC and check if the configuration are pushed to eWLC	Passed	
DNACJ236S_Reg_477	Configuring Mesh setup in 9130 AP from DNAC and verifying the same in eWLC	To configure mesh setup in 9130 AP from DNAC and check if the configuration are pushed to eWLC	Passed	
DNACJ236S_Reg_478	Configuring Mesh setup in 2800 AP from DNAC and verifying the same in eWLC	To configure mesh setup in 2800 AP from DNAC and check if the configuration are pushed to eWLC	Passed	
DNACJ236S_Reg_479	Check if the Mesh settings from DNAC is pushed into eWLC 9800-40 or not	To verify if the mesh setting done in AP from DNAC is pushed to eWLC 9800-40 or not and check all the configuration pushed from DNAC	Passed	
DNACJ236S_Reg_480	Check if the Mesh settings from DNAC is pushed into eWLC 9800-80 or not	To verify if the mesh setting done in AP from DNAC is pushed to eWLC 9800-80 or not and check all the configuration pushed from DNAC	Passed	
DNACJ236S_Reg_481	Check if the Mesh settings from DNAC is pushed into eWLC 9800-L or not	To verify if the mesh setting done in AP from DNAC is pushed to eWLC 9800-L or not and check all the configuration pushed from DNAC	Passed	

DNACJ236S_Reg_482	Check if the Mesh settings from DNAC is pushed into eWLC 9800-CL or not	To verify if the mesh setting done in AP from DNAC is pushed to eWLC 9800-CL or not and check all the configuration pushed from DNAC	Passed	
DNACJ236S_Reg_483	Connecting a Window client to the Mesh AP which is configured from DNAC	To connect a Window client to the Mesh AP which is configured from DNAC and check the behaviour and also check the AP details	Passed	
DNACJ236S_Reg_484	Connecting a Window Surface client to the Mesh AP which is configured from DNAC	To connect a Window surface client to the Mesh AP which is configured from DNAC and check the behaviour and also check the AP details	Passed	
DNACJ236S_Reg_485	Connecting a Android client to the Mesh AP which is configured from DNAC	To connect a Android client to the Mesh AP which is configured from DNAC and check the behaviour and also check the AP details	Passed	
DNACJ236S_Reg_486	Connecting a IOS client to the Mesh AP which is configured from DNAC	To connect a IOS client to the Mesh AP which is configured from DNAC and check the behaviour and also check the AP details	Passed	

DNACJ236S_Reg_487	Connecting a MAC OS client to the Mesh AP which is configured from DNAC	To connect a Mac OS client to the Mesh AP which is configured from DNAC and check the behaviour and also check the AP details	Passed	
DNACJ236S_Reg_488	Verify Mesh AP for both Bridge and Flex Bridge Mode	To verify Mesh AP for both Bridge and Flex Bridge Mode	Passed	
DNACJ236S_Reg_489	Verify Downstream MAPs when Mesh AP setup changes	To verify Downstream MAPs when Mesh AP setup changes	Passed	
DNACJ236S_Reg_490	Verify BGN when its name changes	To verify BGN when its name changes	Passed	
DNACJ236S_Reg_491	Verify Mesh Backhaul Channel when channel number changes	To verify Mesh Backhaul Channel when channel number changes	Passed	
DNACJ236S_Reg_492	Verify Mesh Backhaul Channel when using multiple channels	To verify Mesh Backhaul Channel when using multiple channels	Passed	
DNACJ236S_Reg_493	Verify Mesh Roles	To verify Mesh Roles	Passed	
DNACJ236S_Reg_494	Verify Path Trace on mesh AP 360 Page	To verify Path Trace on mesh AP 360 Page	Passed	
DNACJ236S_Reg_495	Verify Wi-Fi 6 Mesh AP	To verify Wi-Fi 6 Mesh AP	Passed	
DNACJ236S_Reg_496	Verify topology on Client 360 page	To verify topology on Client 360 page	Passed	
DNACJ236S_Reg_497	Test Mesh Topology related events on event viewer	To test Mesh Topology related events on event viewer	Passed	

Enable Multiple Anchor WLCs configuration for SSID

Logical ID	Title	Description	Status	Defect ID
DNACJ236S_Reg_498	Create and verify Anchor Group	To create and verify Anchor Group	Passed	
DNACJ236S_Reg_499	Edit Anchor Group	To edit Anchor Group	Passed	
DNACJ236S_Reg_500	Delete Anchor Group	To delete Anchor Group	Passed	
DNACJ236S_Reg_501	Create Anchor SSID	To create Anchor SSID	Passed	
DNACJ236S_Reg_502	Configure network profile with WLC1 as Active main, WLC2, WLC3 as Anchor with same site	To configure network profile with WLC1 as Active main, WLC2, WLC3 as Anchor with same site	Passed	
DNACJ236S_Reg_503	Configure another network profile with WLC1 as Active main, WLC2, WLC3 as Anchor with same site	To configure network profile with WLC1 as Active main, WLC2, WLC3 as Anchor with same site	Passed	
DNACJ236S_Reg_504	Create and map network profiles with different Anchor WLCs with same site	To create and map network profiles with different Anchor WLCs with same site	Passed	
DNACJ236S_Reg_505	Configure and map network profile with Anchor WLCs with different sites	To configure and map network profile with Anchor WLCs with different sites	Passed	
DNACJ236S_Reg_506	Configure and map another network profile with Anchor WLCs with different sites	To configure and map network profile with Anchor WLCs with different sites	Passed	
DNACJ236S_Reg_507	Configure and map different network profiles with Anchor WLCs with different sites	To configure and map different network profiles with Anchor WLCs with different sites	Passed	

DNACJ236S_Reg_508	Configure and map network profiles with Anchor WLCs with different sites	To configure and map network profiles with Anchor WLCs with different sites	Passed	
DNACJ236S_Reg_509	Configure and map network profiles with Anchor WLCs with different sites	To configure and map network profiles with Anchor WLCs with different sites	Passed	
DNACJ236S_Reg_510	Create and map network profiles with different Anchor WLCs (9800-40, 9800-80, 9800-CL) with same site	To create and map network profiles with different Anchor WLCs (9800-40, 9800-80, 9800-CL) with same site	Passed	
DNACJ236S_Reg_511	Configure and map network profile with Anchor WLCs (9800-40, 9800-80, 9800-CL) with different sites	To configure and map network profile with Anchor WLCs (9800-40, 9800-80, 9800-CL) with different sites	Passed	
DNACJ236S_Reg_512	Create and map network profiles with different Anchor WLCs (9800 HA setups) with same site	To create and map network profiles with different Anchor WLCs (9800 HA setups) with same site	Passed	
DNACJ236S_Reg_513	Configure and map network profile with Anchor WLCs (9800 HA setups) with different sites	To configure and map network profile with Anchor WLCs (9800 HA setups) with different sites	Passed	

Support for manually disabling clients on wireless controller

Logical ID	Title	Description	Status	Defect ID
DNACJ236S_Reg_514	Listing of manual Disabled Clients	To Verify manual disabled clients details listed or not	Passed	
DNACJ236S_Reg_515	Add Manual Disabled Clients/Exclusion Clients option	To Verify manual disabled clients added or not	Passed	
DNACJ236S_Reg_516	Edit Manual Disabled Clients/Exclusion Clients option	To Verify manual disabled clients details edited or not	Passed	
DNACJ236S_Reg_517	Delete manual disabled clients	To Verify Manual disabled client details deleted or not	Passed	
DNACJ236S_Reg_518	Add Manual Disabled Clients to WLC option	To Verify Manual disabled clients added using WLC option or not	Passed	
DNACJ236S_Reg_519	Upload Manual disable clients details using CSV	To Verify Manual disabled clients details Uploaded or not using CSV file	Passed	
DNACJ236S_Reg_520	Check the format of mac address.	To Verify the supported mac format	Passed	
DNACJ236S_Reg_521	Validate the manual disable client details in Client 360 page	To Verify the manual disable client details in client 360 page.	Passed	
DNACJ236S_Reg_522	Add unreachable device and check the status	To Verify unreachable device added or not.	Passed	
DNACJ236S_Reg_523	Import bulk clients macs to exclusion list.	To Verify able to import bulk clients macs to exclusion list.	Passed	

Top N Site - SLA Dashboard - Client KPIs

Logical ID	Title	Description	Status	Defect ID
DNACJ236S_Reg_524	Verify the values for Coverage, Onboarding, Roaming, and Connection speed on the Site Analytics section of the Overall Health Page for 24 hrs	To verify the values for Coverage, Onboarding, Roaming, and Connection speed on the Site Analytics section of the Overall Health Page for 24 hrs	Passed	
DNACJ236S_Reg_525	Verify the values for Coverage, Onboarding, Roaming, and Connection speed on the Site Analytics section of the Overall Health Page for 3 hrs	To verify the values for Coverage, Onboarding, Roaming, and Connection speed on the Site Analytics section of the Overall Health Page for 3 hrs	Passed	
DNACJ236S_Reg_526	Verify the values for Coverage, Onboarding, Roaming, and Connection speed on the Site Analytics section of the Overall Health Page for 7 days	To verify the values for Coverage, Onboarding, Roaming, and Connection speed on the Site Analytics section of the Overall Health Page for 7 hrs	Passed	
DNACJ236S_Reg_527	Verify the values for Coverage, Onboarding, Roaming, and Connection speed on the Site Analytics section of the Overall Health Page for previous day-24hrs	To verify the values for Coverage, Onboarding, Roaming, and Connection speed on the Site Analytics section of the Overall Health Page for previous day 24hrs	Passed	

DNACJ236S_Reg_528	Verify the values for Coverage, Onboarding, Roaming, and Connection speed on the Site Analytics section of the Overall Health Page for previous day -3 hrs	To verify the values for Coverage, Onboarding, Roaming, and Connection speed on the Site Analytics section of the Overall Health Page for previous day 3 hrs	Passed	
DNACJ236S_Reg_529	Verify the values for Coverage, Onboarding, Roaming, and Connection speed on the Site Analytics section of the Overall Health Page for previous day- 7 days	To verify the values for Coverage, Onboarding, Roaming, and Connection speed on the Site Analytics section of the Overall Health Page for previous day -7 days	Passed	
DNACJ236S_Reg_530	View Site Analytics Link on the Site Analytics section of the Overall Health Page	To view Site Analytics Link on the Site Analytics section of the Overall Health Page	Passed	
DNACJ236S_Reg_531	Info Icons on the Site Analytics section of the Overall Health Page	To view the Info Icons on the Site Analytics section of the Overall Health Page	Passed	
DNACJ236S_Reg_532	Site Matrix KPI % values for 24 hrs on the Site Analytics Map	To view Site Matrix KPI % values for 24 hrs on the Site Analytics Map	Passed	
DNACJ236S_Reg_533	Site Matrix KPI % values for 3 hrs on the Site Analytics Map	To view Site Matrix KPI % values for 3 hrs on the Site Analytics Map	Passed	
DNACJ236S_Reg_534	Site Matrix KPI % values for 7 days on the Site Analytics Map	To view Site Matrix KPI % values for 7 days on the Site Analytics Map	Passed	
DNACJ236S_Reg_535	Site Matrix KPI % values for Previous 3 hrs on the Site Analytics Map	To view Site Matrix KPI % values for Previous 3 hrs on the Site Analytics Map	Passed	

DNACJ236S_Reg_536	Site Matrix KPI % values for Previous 24 hrs on the Site Analytics Map	To view Site Matrix KPI % values for Previous 24 hrs on the Site Analytics Map	Passed	
DNACJ236S_Reg_537	Site Matrix KPI % values for Previous 7 days on the Site Analytics Map	To view Site Matrix KPI % values for Previous 7 days on the Site Analytics Map	Passed	
DNACJ236S_Reg_538	Metric violations count for KPI % values on the Site Analytics Map	To view metric violations count for KPI % values on the Site Analytics Map	Passed	
DNACJ236S_Reg_539	Color Scheme for KPI % values on the Site Analytics Map	To view Color Scheme for KPI % values on the Site Analytics Map	Passed	
DNACJ236S_Reg_540	Check whether Info Icons on the Site Analytics Map is shown correct	To check whether Info Icons on the Site Analytics Map is shown correct	Passed	

Support tri radio configuration on Access Points

Logical ID	Title	Description	Status	Defect ID
DNACJ236S_Reg_541	Configure Dual radio mode as "Enabled" with Radio role as Client serving	To Verify dual radio role enabled or not	Passed	
DNACJ236S_Reg_542	Configure Dual radio mode as "Auto"	To Verify dual radio role mode configured as auto or not	Passed	
DNACJ236S_Reg_543	Configure Dual radio mode as "Disabled"	To verify dual radio mode disabled or not	Passed	
DNACJ236S_Reg_544	Configure Dual radio mode as "Enabled" with Radio role as "Monitor"	To verify dual radio mode role configured as monitor or not	Passed	
DNACJ236S_Reg_545	Configure Dual radio mode as "Enabled" with Radio role as "Auto"	To verify dual radio mode role configured as auto or not	Passed	
DNACJ236S_Reg_546	Verify the slot-1 & slot-2's Radio role assignment and admin status's are independent of each other	To verify role assignment and admin status for slots	Passed	
DNACJ236S_Reg_547	Verify that slot-1 & slot-2 can have a max channel width of 80 MHz each when dual-radio mode is enabled with client serving mode	To verify max channel width of each slots	Passed	
DNACJ236S_Reg_548	Verify the error handling when global tri-radio is disabled on WLC and dual radio mode is enabled form workflow	To verify error handling while global radio option is disabled	Passed	

DNACJ236S_Reg_549	Verify the View Devices in tri-radio page	To validate the details of tri radio mode in tri radio page	Passed	
DNACJ236S_Reg_550	Verify Dual radio mode cannot be enabled on an AP when it is in Monitor mode	To verify dual mode enabled or not during ap in monitor mode	Passed	
DNACJ236S_Reg_551	Verify Dual radio mode cannot be enabled on an AP when it is in Sniffer mode	To verify dual mode enabled or not when ap in sniffer mode	Passed	
DNACJ236S_Reg_552	Verify the same channel configuration on slot-1 & Slot-2 when dual radio mode is enabled	To verify channel configuration when dual mode enabled	Passed	
DNACJ236S_Reg_553	Verify AP Reprovision after the Dual-radio mode is disabled on it from the AP config workflow	Verify the dual mode config enabled or not after ap reprovision	Passed	
DNACJ236S_Reg_554	Verify AP Reprovision after the Dual-radio mode is enabled on it from the AP config workflow	Verify the dual mode config disabled or not after ap reprovision	Passed	
DNACJ236S_Reg_555	Verify AP re-provision after Dual-radio mode is enabled and radio role is in auto or monitor	To verify dual mode role as auto or not after ap re-provisioning	Passed	
DNACJ236S_Reg_556	Triradio admin status from recurring flow on supported Aps	To verify admin status recurring flow on supported aps	Passed	
DNACJ236S_Reg_557	Verify the recurring tasks scheduled to run periodically, runs correctly after upgrade	To verify recurring tasks runs correctly or not based on schedule	Passed	

DNACJ236S_Reg_558	Verify the Open RRM functionality with Tri radio Aps after the dual-radio mode is enabled	To verify Open RRM functionality after dual mode radio enabled	Passed	
DNACJ236S_Reg_559	Verify enabling the Dual-radio mode on the APs on a DNAC upgraded from Guardian to Groot release	To verify dual mode after DNAC upgradation	Passed	
DNACJ236S_Reg_560	Verify enabling the Dual-radio mode on the APs on a DNAC upgraded from Frey to Groot release	Verify dual mode radio after DANC upgrade to frey to Groot	Passed	

Support for CCKM configuration on SSID

Logical ID	Title	Description	Status	Defect ID
DNACJ236S_Reg_561	Validate enable CCKM is applicable only for WPA2 or WPA2+WPA3 security in WLAN and provision to eWLC/EWC devices	To validate enable CCKM is applicable only for WPA2 or WPA2+WPA3 security in WLAN and provision to eWLC/EWC devices	Passed	
DNACJ236S_Reg_562	Validate Edit disable CCKM is applicable only for WPA2 or WPA2+WPA3 security in WLAN and provision to eWLC/EWC devices	To validate Edit disable CCKM is applicable only for WPA2 or WPA2+WPA3 security in WLAN and provision to eWLC/EWC devices	Passed	
DNACJ236S_Reg_563	Validate CCKM option is not applicable only for PSK/open and open-secured security in WLAN and provision to eWLC/EWC devices	To validate CCKM option is not applicable only for PSK/open and open-secured security in WLAN and provision to eWLC/EWC devices	Passed	
DNACJ236S_Reg_564	Validate time stamp tolerance range for CCKM and provision to eWLC/EWC devices	To validate time stamp tolerance range for CCKM and provision to eWLC/EWC devices	Passed	
DNACJ236S_Reg_565	Validate edit time stamp tolerance range for CCKM and provision to eWLC/EWC devices	To validate edit time stamp tolerance range for CCKM and provision to eWLC/EWC devices	Passed	

DNACJ236S_Reg_566	Validate enable CCKM is applicable only for WPA2 or WPA2+WPA3 security in WLAN with FT enabled and provision to eWLC/EWC devices	To validate enable CCKM is applicable only for WPA2 or WPA2+WPA3 security in WLAN with FT enabled and provision to eWLC/EWC devices	Passed	
DNACJ236S_Reg_567	Validate Audit log WLAN with CCKM details/Time stamp are shown in audit log after provision of eWLC/EWC devices	To validate Audit log WLAN with CCKM details/Time stamp are shown in audit log after provision of eWLC/EWC devices	Passed	
DNACJ236S_Reg_568	Validate configuration preview scenario for CCKM with time stamp and provision to eWLC/EWC devices	To validate configuration preview scenario for CCKM with time stamp and provision to eWLC/EWC devices	Passed	
DNACJ236S_Reg_569	Add Advanced SSID Model Config WLAN parameters with CCKM and provision to eWLC/EWC devices	To add Advanced SSID Model Config WLAN parameters with CCKM and provision to eWLC/EWC devices	Passed	
DNACJ236S_Reg_570	Validate WLAN with CCKM and Time stamp tolerance details are shown in SSID summary page	To validate WLAN with CCKM and Time stamp tolerance details are shown in SSID summary page	Passed	
DNACJ236S_Reg_571	Validate WLAN with CCKM and Time stamp tolerance details are shown in during provision summary of eWLC/EWC devices summary page	To validate WLAN with CCKM and Time stamp tolerance details are shown in during provision summary of eWLC/EWC devices summary page	Passed	

DNACJ236S_Reg_572	Validate Provision results shows for CCKM and provision to eWLC/EWC devices	To validate Provision results shows for CCKM and provision to eWLC/EWC devices	Passed	
DNACJ236S_Reg_573	Validate WLAN with time stamp tolerance are allowed to edit in site over-ride configuration and provision to eWLC/EWC devices	To validate WLAN with time stamp tolerance are allowed to edit in site over-ride configuration and provision to eWLC/EWC devices	Passed	
DNACJ236S_Reg_574	Validate WLAN with CCKM are allowed to edit in site over-ride configuration and provision eWLC/EWC devices	To validate WLAN with CCKM are allowed to edit in site over-ride configuration and provision eWLC/EWC devices	Passed	
DNACJ236S_Reg_575	Validate compliance for time stamp tolerance and provision to eWLC/EWC devices	To validate compliance for time stamp tolerance and provision to eWLC/EWC devices	Passed	
DNACJ236S_Reg_576	Validate compliance for CCKM and provision to eWLC/EWC devices	To validate compliance for CCKM and provision to eWLC/EWC devices	Passed	
DNACJ236S_Reg_577	Validate Brownfield for CCKM and provision to eWLC/EWC devices	To validate Brownfield for CCKM and provision to eWLC/EWC devices	Passed	
DNACJ236S_Reg_578	Validate Brownfield for time stamp tolerance and provision to eWLC/EWC devices	To validate Brownfield for time stamp tolerance and provision to eWLC/EWC devices	Passed	

DNACJ236S_Reg_579	Configure WLAN with CCKM with flexconnect SSID and provision to eWLC/EWC devices	To configure WLAN with CCKM with flexconnect SSID and provision to eWLC/EWC devices	Passed	
DNACJ236S_Reg_580	Configure WLAN with CCKM with fabric SSID and provision to eWLC/EWC devices	To configure WLAN with CCKM with fabric SSID and provision to eWLC/EWC devices	Passed	
DNACJ236S_Reg_581	Backup and restore with CCKM enabled/disabled and time stamp and provision to eWLC/EWC devices	To do backup and restore with CCKM enabled/disabled and time stamp and provision to eWLC/EWC devices	Passed	
DNACJ236S_Reg_582	Backup and restore at site level over-ride and provision to eWLC/EWC devices	To do backup and restore at site level over-ride and provision to eWLC/EWC devices	Passed	
DNACJ236S_Reg_583	Validate Windows Client connect with CCKM	To validate Windows Client connect with CCKM	Passed	
DNACJ236S_Reg_584	Validate Android Client connect with CCKM	To validate Android Client connect with CCKM	Passed	
DNACJ236S_Reg_585	Validate MAC Client connect with CCKM	To validate MAC Client connect with CCKM	Passed	
DNACJ236S_Reg_586	Validate IOS Client connect with CCKM	To validate IOS Client connect with CCKM	Passed	
DNACJ236S_Reg_587	Validate Surface Go Client connect with CCKM	To validate Surface Go Client connect with CCKM	Passed	
DNACJ236S_Reg_588	Validate Client roam with CCKM	To validate Client roam with CCKM	Passed	
DNACJ236S_Reg_589	Validate event viewer of client page shows CCKM authentication type	To validate event viewer of client page shows CCKM authentication type	Passed	

Client Global Events viewer

Logical ID	Title	Description	Status	Defect ID
DNACJ236S_Reg_590	Configuring DNAC with Network devices, clients, access points.	To configure DNAC with Network devices, clients, access points.	Passed	
DNACJ236S_Reg_591	Making the 9800-L eWLC down which is added in DNAC	To make the eWLC 9800-80 down which is added in DNAC and verify if the	Passed	
DNACJ236S_Reg_592	Making the 9800-CL eWLC down which is added in DNAC	To make the eWLC 9800-80 down which is added in DNAC and verify if the	Passed	
DNACJ236S_Reg_593	Making the 2.4GHz of 9105 AP radio down and check if the logs showing in DNAC	To make the 2.4GHz of 9105 AP radio down of the AP which is connected to eWLC	Passed	
DNACJ236S_Reg_594	Making the 2.4GHz of 9115 AP radio down and check if the logs showing in DNAC	To make the 2.4GHz of 9115 AP radio down of the AP which is connected to eWLC	Passed	
DNACJ236S_Reg_595	Making the 2.4GHz of 9120 AP radio down and check if the logs showing in DNAC	To make the 2.4GHz of 9120 AP radio down of the AP which is connected to eWLC	Passed	
DNACJ236S_Reg_596	Making the 2.4GHz of 9130 AP radio down and check if the logs showing in DNAC	To make the 2.4GHz of 9130 AP radio down of the AP which is connected to eWLC	Passed	
DNACJ236S_Reg_597	Making the 5GHz of 9105 AP radio down and check if the logs showing in DNAC	To make the 5GHz of 9105 AP radio down of the AP which is connected to eWLC	Passed	

DNACJ236S_Reg_598	Making the 5GHz of 9115 AP radio down and check if the logs showing in DNAC	To make the 5GHz of 9115 AP radio down of the AP which is connected to eWLC	Passed	
DNACJ236S_Reg_599	Making the 5GHz of 9120 AP radio down and check if the logs showing in DNAC	To make the 5GHz of 9120 AP radio down of the AP which is connected to eWLC	Passed	
DNACJ236S_Reg_600	Making the 5GHz of 9130 AP radio down and check if the logs showing in DNAC	To make the 5GHz of 9130 AP radio down of the AP which is connected to eWLC	Passed	
DNACJ236S_Reg_601	Disconnecting a 9105 AP from eWLC	To disconnect a 9105 AP from eWLC and verify the same in the Issues & Events	Passed	
DNACJ236S_Reg_602	Disconnecting a 9115 AP from eWLC	To disconnect a 9115 AP from eWLC and verify the same in the Issues & Events	Passed	
DNACJ236S_Reg_603	Disconnecting a 9120 AP from eWLC	To disconnect a 9120 AP from eWLC and verify the same in the Issues & Events	Passed	
DNACJ236S_Reg_604	Disconnecting a 9130 AP from eWLC	To disconnect a 9105 AP from eWLC and verify the same in the Issues & Events	Passed	
DNACJ236S_Reg_605	Making the 9800-80 eWLC down which is added in DNAC	To make the eWLC 9800-80 down which is added in DNAC and verify if the	Passed	

Troubleshooting tab on AP-360

Logical ID	Title	Description	Status	Defect ID
DNACJ236S_Reg_606	Add network devices like switches, Controllers to DNAC and check if the network devices gets added to DNAC or not	To add network devices like switches, Controllers to DNAC and check if the network devices gets added to DNAC or not	Passed	
DNACJ236S_Reg_607	Configuring DNAC with Network devices, clients, access points.	To configure DNAC with Network devices, clients, access points.	Passed	
DNACJ236S_Reg_608	Check 9130 AP whether able to monitor Ping Tool in AP 360	To check 9130 AP whether able to monitor Ping Tool in AP 360	Passed	
DNACJ236S_Reg_609	Check 9120 AP whether able to monitor Ping Tool in AP 360	To check 9120 AP whether able to monitor Ping Tool in AP 360	Passed	
DNACJ236S_Reg_610	Check 9105 AP whether able to monitor Ping Tool in AP 360	To check 9105 AP whether able to monitor Ping Tool in AP 360	Passed	
DNACJ236S_Reg_611	Check 9115 AP whether able to monitor Ping Tool in AP 360	To check 9115 AP whether able to monitor Ping Tool in AP 360	Passed	
DNACJ236S_Reg_612	Check 9130 AP whether able to monitor Path trace Tool in AP 360	To check 9130 AP whether able to monitor Path trace Tool in AP 360	Passed	
DNACJ236S_Reg_613	Check 9115 AP whether able to monitor Path trace Tool in AP 360	To check 9115 AP whether able to monitor Path trace Tool in AP 360	Passed	
DNACJ236S_Reg_614	Check 9105 AP whether able to monitor Path trace Tool in AP 360	To check 9105 AP whether able to monitor Path trace Tool in AP 360	Passed	

DNACJ236S_Reg_615	Check 9120 AP whether able to monitor Path trace Tool in AP 360	To check 9120 AP whether able to monitor Path trace Tool in AP 360	Passed	
DNACJ236S_Reg_616	Check whether able to monitor live Traffic -Path trace Tool in AP 360	To check whether able to monitor live Traffic -Path trace Tool in AP 360	Passed	
DNACJ236S_Reg_617	Check 9130 AP whether able to monitor Trace Route Tool in AP 360	To check 9130 AP whether able to monitor Trace Route Tool in AP 360	Passed	
DNACJ236S_Reg_618	Check 9120 AP whether able to monitor Trace Route Tool in AP 360	To check 9120 AP whether able to monitor Trace Route Tool in AP 360	Passed	
DNACJ236S_Reg_619	Check 9105 AP whether able to monitor Trace Route Tool in AP 360	To check 9105 AP whether able to monitor Trace Route Tool in AP 360	Passed	
DNACJ236S_Reg_620	Check 9115 AP whether able to monitor Trace Route Tool in AP 360	To check 9115 AP whether able to monitor Trace Route Tool in AP 360	Passed	
DNACJ236S_Reg_621	Device Action for 9130 AP as Rebooting AP in AP 360 Tools	To device Action for 9130 AP as Rebooting AP in AP 360 Tools	Passed	
DNACJ236S_Reg_622	Device Action for 9115 AP as Rebooting AP in AP 360 Tools	To device Action for 9115 AP as Rebooting AP in AP 360 Tools	Passed	
DNACJ236S_Reg_623	Device Action for 9105 AP as Rebooting AP in AP 360 Tools	To device Action for 9105 AP as Rebooting AP in AP 360 Tools	Passed	
DNACJ236S_Reg_624	Device Action for 9120 AP as Rebooting AP in AP 360 Tools	To device Action for 9120 AP as Rebooting AP in AP 360 Tools	Passed	
DNACJ236S_Reg_625	Device Action for 9130 AP as Flash Led blink Forever in AP 360 Tools	To device Action for 9130 AP as Flash Led blink Forever in AP 360 Tools	Passed	

DNACJ236S_Reg_626	Device Action for 9120 AP as Flash Led blink Forever in AP 360 Tools	To device Action for 9120 AP as Flash Led blink Forever in AP 360 Tools	Passed	
DNACJ236S_Reg_627	Device Action for 9105 AP as Flash Led blink Forever in AP 360 Tools	To device Action for 9105 AP as Flash Led blink Forever in AP 360 Tools	Passed	
DNACJ236S_Reg_628	Device Action for 9115 AP as Flash Led blink Forever in AP 360 Tools	To device Action for 9115 AP as Flash Led blink Forever in AP 360 Tools	Passed	
DNACJ236S_Reg_629	Device Action for 9130 AP as Flash Led Stop blinking AP 360 Tools	To device Action for 9130 AP as Flash Led Stop blinking AP 360 Tools	Passed	
DNACJ236S_Reg_630	Device Action for 9115 AP as Flash Led Stop blinking AP 360 Tools	To device Action for 9115 AP as Flash Led Stop blinking AP 360 Tools	Passed	
DNACJ236S_Reg_631	Device Action for 9105 AP as Flash Led Stop blinking AP 360 Tools	To device Action for 9105 AP as Flash Led Stop blinking AP 360 Tools	Passed	
DNACJ236S_Reg_632	Device Action for 9120 AP as Flash Led Stop blinking AP 360 Tools	To device Action for 9120 AP as Flash Led Stop blinking AP 360 Tools	Passed	
DNACJ236S_Reg_633	Check whether able to reset Radio 0 for 2.4 GHz in AP 360 tools	To check whether able to reset Radio 0 for 2.4 GHz in AP 360 tools	Passed	
DNACJ236S_Reg_634	Check whether able to reset Radio 1 for 5 GHz in AP 360 tools	To check whether able to reset Radio 1 for 5 GHz in AP 360 tools	Passed	
DNACJ236S_Reg_635	Check whether able to reset Radio 2 for 5 GHz in AP 360 tools	To check whether able to reset Radio 2 for 5 GHz in AP 360 tools	Passed	

Channel Utilization Breakout

Logical ID	Title	Description	Status	Defect ID
DNACJ236S_Reg_636	Check Rx/Tx details on AP 360 page	To check Rx/Tx details on AP 360 page	Passed	
DNACJ236S_Reg_637	Check interference details on AP 360 page	To check interference details on AP 360 page	Passed	
DNACJ236S_Reg_638	Check utilization breakout chart for 9105 AP	To check utilization breakout chart for 9105 AP	Passed	
DNACJ236S_Reg_639	Check utilization breakout chart for 9115 AP	To check utilization breakout chart for 9115 AP	Passed	
DNACJ236S_Reg_640	Check utilization breakout chart for 9120 AP	To check utilization breakout chart for 9120 AP	Passed	
DNACJ236S_Reg_641	Check utilization breakout chart for 9130 AP	To check utilization breakout chart for 9130 AP	Passed	
DNACJ236S_Reg_642	Check utilization breakout chart for 4800 AP	To check utilization breakout chart for 4800 AP	Passed	
DNACJ236S_Reg_643	Check details of connected clients to 5Ghz bands.	To check details of connected clients to 5Ghz bands.	Passed	
DNACJ236S_Reg_644	Check details of connected clients to 2.4Ghz bands.	To check details of connected clients to 2.4Ghz bands.	Passed	
DNACJ236S_Reg_645	Check device details with bad health in generated chart.	To check device details with bad health in generated chart.	Passed	
DNACJ236S_Reg_646	Check utilization breakout chart for Windows client	To check utilization breakout chart for Windows client	Passed	
DNACJ236S_Reg_647	Check utilization breakout chart for Android client	To check utilization breakout chart for Android client	Passed	

DNACJ236S_Reg_648	Check utilization breakout chart for Mac client	To check utilization breakout chart for Mac client	Passed	
DNACJ236S_Reg_649	Check utilization breakout chart for iPhone client	To check utilization breakout chart for iPhone client	Passed	
DNACJ236S_Reg_650	Check utilization breakout chart for roaming client	To check utilization breakout chart for roaming client	Passed	

Issues correlation[AP-down issue]

Logical ID	Title	Description	Status	Defect ID
DNACJ236S_Reg_651	Join Network devices to DNAC	To join Network devices to DNAC	Passed	
DNACJ236S_Reg_652	Make a 9105 AP down and check whether AP Down issue notification is seen in issue page	To make a 9105 AP down and check whether AP Down issue notification is seen in issue page	Passed	
DNACJ236S_Reg_653	Make a 9115 AP down and check whether AP Down issue notification is seen in issue page	To make a 9115 AP down and check whether AP Down issue notification is seen in issue page	Passed	
DNACJ236S_Reg_654	Make a 9120 AP down and check whether AP Down issue notification is seen in issue page	To make a 9120 AP down and check whether AP Down issue notification is seen in issue page	Passed	
DNACJ236S_Reg_655	Make a 9130 AP down and check whether AP Down issue notification is seen in issue page	To make a 9130 AP down and check whether AP Down issue notification is seen in issue page	Passed	
DNACJ236S_Reg_656	Make a 9105 AP down and check whether AP Down issue notification is seen in device 360	To make a 9105 AP down and check whether AP Down issue notification is seen in Device 360	Passed	
DNACJ236S_Reg_657	Make a 9115 AP down and check whether AP Down issue notification is seen in device 360	To make a 9115 AP down and check whether AP Down issue notification is seen in Device 360	Passed	
DNACJ236S_Reg_658	Make a 9120 AP down and check whether AP Down issue notification is seen in device 360	To make a 9120 AP down and check whether AP Down issue notification is seen in Device 360	Passed	

DNACJ236S_Reg_659	Make a 9130 AP down and check whether AP Down issue notification is seen in device 360	To make a 9130 AP down and check whether AP Down issue notification is seen in Device 360	Passed	
DNACJ236S_Reg_660	Make Several Aps connected to a single switch down and check all the ap down issue notification is shown as a single notification or not	To make Several Aps connected to a single switch down and check all the ap down issue notification is shown as a single notification or not	Passed	
DNACJ236S_Reg_661	Make Several Aps connected to different switch down and check whether the ap down notification is seen based on switch or not	To make Several Aps connected to different switch down and check whether the ap down notification is seen based on switch or not	Passed	
DNACJ236S_Reg_662	Check whether able to export the issue from issues & Events page	To check whether able to export the issue from issues & Events page	Passed	
DNACJ236S_Reg_663	Check Problem details, Impact details and suggested actions of the issue from Issue & Event page	To check Problem details, Impact details and suggested actions of the issue from issue and event page	Passed	
DNACJ236S_Reg_664	Check whether able to export the issue from Device 360	To check whether able to export the issue from Device 360	Passed	
DNACJ236S_Reg_665	Check Problem details, Impact details and suggested actions of the issue from Device 359	To check Problem details, Impact details and suggested actions of the issue from Device 359	Passed	
DNACJ236S_Reg_666	Check whether the issues are auto resolved when the ap comes to up state	To check whether the issues are auto resolved when the ap comes to up state	Passed	

Support custom WLAN profile configuration from DNAC

Logical ID	Title	Description	Status	Defect ID
DNACJ236S_Reg_667	Validate no of characters and special characters in custom WLAN and policy Profile name	To validate no of characters and special characters in custom WLAN and policy Profile name	Passed	
DNACJ236S_Reg_668	Configure WLAN with custom WLAN profile name, policy profile name and provision to eWLC controller	To configure WLAN with custom WLAN profile name, policy profile name and provision to eWLC controller	Passed	
DNACJ236S_Reg_669	Edit WLAN parameters with custom WLAN/policy profile name and provision to eWLC controller	To edit WLAN parameters with custom WLAN/policy profile name and provision to eWLC controller	Passed	
DNACJ236S_Reg_670	Edit WLAN Flavours with custom WLAN/ policy profile name and provision to eWLC controller	To edit WLAN Flavours with custom WLAN/ policy profile name and provision to eWLC controller	Passed	
DNACJ236S_Reg_671	Edit SSID with same wlan profile at Global and map it to a another network profile NP2 with flex connect to non flex and re-provision to controller	To edit SSID with same wlan profile at Global and map it to a another network profile NP2 with flex connect to non flex and re-provision to controller	Passed	
DNACJ236S_Reg_672	Edit SSID with same wlan profile at Global and map it to a another network profile NP2 with interface change and re-provision to controller	To edit SSID with same wlan profile at Global and map it to a another network profile NP2 with interface change and re-provision to controller	Passed	

DNACJ236S_Reg_673	Edit SSID with different wlan profile at Global and map it to a another network profile NP2 with interface change and re-provision to controller	To edit SSID with different wlan profile at Global and map it to a another network profile NP2 with interface change and re-provision to controller	Passed	
DNACJ236S_Reg_674	Remove wlan from Network profile and re-provision to controller	To remove wlan from Network profile and re-provision to controller	Passed	
DNACJ236S_Reg_675	Over-ride SSID with same wlan profile name and re-provision to controller	To over-ride SSID with same wlan profile name and re-provision to controller	Passed	
DNACJ236S_Reg_676	Over-ride SSID with different wlan profile name and re-provision to controller	To over-ride SSID with different wlan profile name and re-provision to controller	Passed	
DNACJ236S_Reg_677	Over-ride SSID with different wlan profile name in floor level and re-provision to controller	To over-ride SSID with different wlan profile name in floor level and re-provision to controller	Passed	
DNACJ236S_Reg_678	Over-ride SSID with different wlan profile name with different wlan parameters and re-provision to controller	To over-ride SSID with different wlan profile name with different wlan parameters and re-provision to controller	Passed	
DNACJ236S_Reg_679	Edit SSID with new wlan profile name and re-provision to controller and validate delete of previously created wlan	To edit SSID with new wlan profile name and re-provision to controller and validate delete of previously created wlan	Passed	

DNACJ236S_Reg_680	Brownfield Learn controller with different wlan profile name and provision to controller	To brownfield Learn controller with different wlan profile name and provision to controller	Passed	
DNACJ236S_Reg_681	Brownfield Learn the controller with 2 Policy Tags(with APs) mapped to same wlanprofile and but different policyprofilename	To brownfield Learn the controller with 2 Policy Tags(with APs) mapped to same wlanprofile and but different policyprofilename	Passed	
DNACJ236S_Reg_682	Brownfield Learn the controller with 2 Policy Tags(with APs) mapped to same different wlanprofiles and but same policyprofilename	To brownfield Learn the controller with 2 Policy Tags(with APs) mapped to same different wlanprofiles and but same policyprofilename	Passed	
DNACJ236S_Reg_683	Validate WLAN with custom WLAN profile name and policy profile name details are shown in SSID summary page	To validate WLAN with custom WLAN profile name and policy profile name details are shown in SSID summary page	Passed	
DNACJ236S_Reg_684	Validate WLAN with custom WLAN profile name and policy profile name details are shown in during provision of eWLC summary page	To validate WLAN with custom WLAN profile name and policy profile name details are shown in during provision of eWLC summary page	Passed	
DNACJ236S_Reg_685	Validate Audit log WLAN with custom WLAN profile name and policy profile name details are shown in audit log after provision of eWLC	To validate Audit log WLAN with custom WLAN profile name and policy profile name details are shown in audit log after provision of eWLC	Passed	

DNACJ236S_Reg_686	Validate WLAN with custom WLAN profile name and policy profile name are shown in 360 view of eWLC controller	To validate WLAN with custom WLAN profile name and policy profile name are shown in 360 view of eWLC controller	Passed	
DNACJ236S_Reg_687	Validate N+1 scenario for custom WLAN profile name/Policy profile name and provision to eWLC controller	To validate N+1 scenario for custom WLAN profile name/Policy profile name and provision to eWLC controller	Passed	
DNACJ236S_Reg_688	Validate configuration preview scenario for custom WLAN profile name/Policy profile name and provision to eWLC controller	To validate configuration preview scenario for custom WLAN profile name/Policy profile name and provision to eWLC controller	Passed	
DNACJ236S_Reg_689	Validate Provision results shows for custom WLAN profile name/Policy profile name and provision to eWLC controller	To validate Provision results shows for custom WLAN profile name/Policy profile name and provision to eWLC controller	Passed	
DNACJ236S_Reg_690	Validate compliance for custom WLAN profile name/Policy profile name and provision to eWLC controller	To validate compliance for custom WLAN profile name/Policy profile name and provision to eWLC controller	Passed	
DNACJ236S_Reg_691	Validate Upgrade and configure WLAN with custom WLAN profile name, policy profile name and provision to eWLC controller	To validate Upgrade and configure WLAN with custom WLAN profile name, policy profile name and provision to eWLC controller	Passed	

Pan Assurance event viewer (Phase - 3)

Logical ID	Title	Description	Status	Defect ID
DNACJ236S_Reg_692	Configuring DNAC with Network devices, clients, access points.	To configure DNAC with Network devices, clients, access points.	Passed	
DNACJ236S_Reg_693	Making the 9800-L eWLC down which is added in DNAC	To make the eWLC 9800-80 down which is added in DNAC and verify if the	Passed	
DNACJ236S_Reg_694	Making the 9800-CL eWLC down which is added in DNAC	To make the eWLC 9800-80 down which is added in DNAC and verify if the	Passed	
DNACJ236S_Reg_695	Making the 2.4GHz of 9105 AP radio down and check if the logs showing in DNAC	To make the 2.4GHz of 9105 AP radio down of the AP which is connected to eWLC	Passed	
DNACJ236S_Reg_696	Making the 2.4GHz of 9115 AP radio down and check if the logs showing in DNAC	To make the 2.4GHz of 9115 AP radio down of the AP which is connected to eWLC	Passed	
DNACJ236S_Reg_697	Making the 2.4GHz of 9120 AP radio down and check if the logs showing in DNAC	To make the 2.4GHz of 9120 AP radio down of the AP which is connected to eWLC	Passed	
DNACJ236S_Reg_698	Making the 2.4GHz of 9130 AP radio down and check if the logs showing in DNAC	To make the 2.4GHz of 9130 AP radio down of the AP which is connected to eWLC	Passed	
DNACJ236S_Reg_699	Making the 5GHz of 9105 AP radio down and check if the logs showing in DNAC	To make the 5GHz of 9105 AP radio down of the AP which is connected to eWLC	Passed	

DNACJ236S_Reg_700	Making the 5GHz of 9115 AP radio down and check if the logs showing in DNAC	To make the 5GHz of 9115 AP radio down of the AP which is connected to eWLC	Passed	
DNACJ236S_Reg_701	Making the 5GHz of 9120 AP radio down and check if the logs showing in DNAC	To make the 5GHz of 9120 AP radio down of the AP which is connected to eWLC	Passed	
DNACJ236S_Reg_702	Making the 5GHz of 9130 AP radio down and check if the logs showing in DNAC	To make the 5GHz of 9130 AP radio down of the AP which is connected to eWLC	Passed	
DNACJ236S_Reg_703	Disconnecting a 9105 AP from eWLC	To disconnect a 9105 AP from eWLC and verify the same in the Issues & Events	Passed	
DNACJ236S_Reg_704	Disconnecting a 9115 AP from eWLC	To disconnect a 9115 AP from eWLC and verify the same in the Issues & Events	Passed	
DNACJ236S_Reg_705	Disconnecting a 9120 AP from eWLC	To disconnect a 9120 AP from eWLC and verify the same in the Issues & Events	Passed	
DNACJ236S_Reg_706	Disconnecting a 9130 AP from eWLC	To disconnect a 9105 AP from eWLC and verify the same in the Issues & Events	Passed	
DNACJ236S_Reg_707	Making the 9800-80 eWLC down which is added in DNAC	To make the eWLC 9800-80 down which is added in DNAC and verify if the	Passed	

Network Services DHCP Failure Reasons

Logical ID	Title	Description	Status	Defect ID
DNACJ236S_Reg_708	Check the failure reason for DHCP lease time	Check the Client events DHCP data contains DHCP Lease time parameter	Passed	
DNACJ236S_Reg_709	Check the Client events DHCP data contains DHCP MAC address received form DHCP packets	Verify the Client events DHCP data contains DHCP MAC address received form DHCP packets or not	Passed	
DNACJ236S_Reg_710	config IPSLA for the DHCP server with dhcp probes	Verify IP SLA CLIs output and check whether it show no response or not.	Passed	
DNACJ236S_Reg_711	DHCP Server replying with NAC IP	Simulate a scenario of DHCP Server replying with NAC and check NAC IP is included NSA DHCP Client stats	Passed	
DNACJ236S_Reg_712	Netmask, GW IP addresses, and VLAN shall be present as part of DHCP client stats.	Check the Client events, DHCP stats should contains Netmask, GW IP addresses, and VLAN	Passed	
DNACJ236S_Reg_713	Server will not respond, and IP SLA CLIs output should show not reachable	Config IPSLA for the DHCP server with icmp probes. Simulate the scenario of DHCP server down	Passed	
DNACJ236S_Reg_714	Configure Wrongful client MAC and verify DHCP client stats.	Simulate a scenario where Client sends wrongful MAC and check if DHCP stats include the wrongful mac in the stats	Passed	

DNACJ236S_Reg_715	Client event NSA DHCP stats include the Decline IP for which DHCP decline is sent.	Simulate a scenario where Client responds with Decline and check the decline ip is present in NSA DHCP stats in the client event	Passed	
DNACJ236S_Reg_716	Observe memory leaks and crash during DHCP failure	Simulate few client join and some of these scenarios and check memory	Passed	
DNACJ236S_Reg_717	Perform roaming and checking the DHCP failure reason	To verify Dhcp dashlet during roaming	Passed	

Multi WLC Support for MRE based client troubleshooting

Logical ID	Title	Description	Status	Defect ID
DNACJ236S_Reg_718	Generate Logs for RF Issues	To generate Logs for RF Issues	Passed	
DNACJ236S_Reg_719	Generate Logs for RRM (Radio Resource Management) Issues	To generate Logs for RRM (Radio Resource Management) Issues	Passed	
DNACJ236S_Reg_720	Generate Logs for WLC Platform Issues	To generate Logs for WLC Platform Issues	Passed	
DNACJ236S_Reg_721	Generate Logs for AP Join/Connectivity Issues	To generate Logs for AP Join/Connectivity Issues	Passed	
DNACJ236S_Reg_722	Generate Logs for Client Connectivity Issues	To generate Logs for Client Connectivity Issues	Passed	
DNACJ236S_Reg_723	Generate Logs for Guest Central Web Authentication(CWA) or Local Web Authentication(LWA) Issues	To generate Logs for Guest Central Web Authentication(CWA) or Local Web Authentication(LWA) Issues	Passed	
DNACJ236S_Reg_724	Generate Logs for License Issues	To generate Logs for License Issues	Passed	
DNACJ236S_Reg_725	Generate Logs for High Availability issues	To generate Logs for High Availability issues	Passed	
DNACJ236S_Reg_726	Generate Logs for Windows Client Connectivity Issues	To generate Logs for Windows Client Connectivity Issues	Passed	
DNACJ236S_Reg_727	Generate Logs for Android Client Connectivity Issues	To generate Logs for Android Client Connectivity Issues	Passed	
DNACJ236S_Reg_728	Generate Logs for MAC Client Connectivity Issues	To generate Logs for MAC Client Connectivity Issues	Passed	
DNACJ236S_Reg_729	Generate Logs for Surface Client Connectivity Issues	To generate Logs for Surface Client Connectivity Issues	Passed	

DNACJ236S_Reg_730	Generate Logs for Wired Client Connectivity Issues	To generate Logs for Wired Client Connectivity Issues	Passed	
DNACJ236S_Reg_731	Generate WLC troubleshoot logs with incorrect MAC address	To generate WLC troubleshoot logs with incorrect MAC address	Passed	
DNACJ236S_Reg_732	Generate WLC troubleshoot logs with incorrect IP address	To generate WLC troubleshoot logs with incorrect IP address	Passed	

Application experience for flex and fabric

Logical ID	Title	Description	Status	Defect ID
DNACJ236S_Reg_733	Enable Application Telemetry	To enable Application Telemetry	Passed	
DNACJ236S_Reg_734	Disable Application Telemetry	To disable Application Telemetry	Passed	
DNACJ236S_Reg_735	Update Telemetry Settings	To update Telemetry Settings	Passed	
DNACJ236S_Reg_736	Verify Application experience of a Host for 3 hours	To verify Application experience of a Host for 3 hours	Passed	
DNACJ236S_Reg_737	Verify Application experience of a Host for 24 hours	To verify Application experience of a Host for 24 hours	Passed	
DNACJ236S_Reg_738	Verify Application experience of a Host for 7 days	To verify Application experience of a Host for 7 days	Passed	
DNACJ236S_Reg_739	Verify Application experience of a Network Device	To verify Application experience of a Network Device	Passed	
DNACJ236S_Reg_740	Monitor the Health of all Applications	To monitor the Health of all Applications	Passed	
DNACJ236S_Reg_741	Monitor the Health of an Application	To monitor the Health of an Application	Passed	
DNACJ236S_Reg_742	Configure Health Score Settings for Applications	To configure Health Score Settings for Applications	Passed	
DNACJ236S_Reg_743	Configure Flow Monitor and verify details in Client 360 page	To configure Flow Monitor and to verify details in Client 360 page	Passed	
DNACJ236S_Reg_744	Configure QOS and verify details in Client 360 page	To configure QOS and to verify details in Client 360 page	Passed	

DNACJ236S_Reg_745	Push flex/fabric configuration from DNAC to EWLC	To push flex/fabric configuration from DNAC to EWLC	Passed	
DNACJ236S_Reg_746	Connect Windows Client and verify Application details for flex/fabric	To connect Windows Client and to verify Application details for flex/fabric	Passed	
DNACJ236S_Reg_747	Connect Android Client and verify Application details for flex/fabric	To connect Android Client and to verify Application details for flex/fabric	Passed	
DNACJ236S_Reg_748	Connect MAC Client and verify Application details for flex/fabric	To connect MAC Client and to verify Application details for flex/fabric	Passed	
DNACJ236S_Reg_749	Connect IOS Client and verify Application details for flex/fabric	To connect IOS Client and to verify Application details for flex/fabric	Passed	
DNACJ236S_Reg_750	Connect Go Plus Client and verify Application details for flex/fabric	To connect Go Plus Client and to verify Application details for flex/fabric	Passed	

Support AP Authorization (AAA) configuration from DNAC

Logical ID	Title	Description	Status	Defect ID
DNACJ236S_Reg_751	Check the AP Authorization list configuration is availability in DNAC	To check the AP Authorization list configuration is availability in DNAC	Passed	
DNACJ236S_Reg_752	Check Local Authorization List is creation with MAC Address	To check Local Authorization List creation with MAC Address	Passed	
DNACJ236S_Reg_753	Check Local Authorization List creation with Serial number	To check Local Authorization List creation with Serial number	Passed	
DNACJ236S_Reg_754	Check Local Authorization List is created with both MAC Address and Serial number	To check Local Authorization List is created with both MAC Address and Serial number	Passed	
DNACJ236S_Reg_755	Check Local Authorization list is Deleted without any error	To check Local Authorization list is deleted without any error	Passed	
DNACJ236S_Reg_756	Check AAA Authorization list with Authorize AP against MAC Address is created without any error	To check AAA Authorization list with Authorize AP against MAC Address is created without any error	Passed	
DNACJ236S_Reg_757	Check AAA Authorization list with Authorize AP against Serial Number is created without any error	To check AAA Authorization list with Authorize AP against Serial Number is created without any error	Passed	

DNACJ236S_Reg_758	Check AAA Authorization list with both Authorize AP against MAC Address and Authorize AP against Serial Number is created without any error	To check AAA Authorization list with both Authorize AP against MAC Address and Authorize AP against Serial Number is created without any error	Passed	
DNACJ236S_Reg_759	Check Authorization list is created both local and AAA Configuration or not	To check Authorization list is created both local and AAA Configuration or not	Passed	
DNACJ236S_Reg_760	Check whether the local authorization configuration is pushed to 9800-L controller or not	To check whether the local authorization configuration is pushed to 9800-L controller or not	Passed	
DNACJ236S_Reg_761	Check whether the local authorization configuration is pushed to 9800-CL controller or not	To check whether the local authorization configuration is pushed to 9800-CL controller or not	Passed	
DNACJ236S_Reg_762	Check whether the local authorization configuration is pushed to 9800-80 controller or not	To check whether the local authorization configuration is pushed to 9800-80 controller or not	Passed	
DNACJ236S_Reg_763	Check whether the AAA authorization configuration is pushed to 9800-L controller or not	To check whether the AAA authorization configuration is pushed to 9800-L controller or not	Passed	
DNACJ236S_Reg_764	Check whether the AAA authorization configuration is pushed to 9800-CL controller or not	To check whether the AAA authorization configuration is pushed to 9800-CL controller or not	Passed	

DNACJ236S_Reg_765	Check whether the AAA authorization configuration is pushed to 9800-80 controller or not	To check whether the AAA authorization configuration is pushed to 9800-80 controller or not	Passed	
DNACJ236S_Reg_766	Verify the AAA authorization list configuration changes pushed from DNAC in 9800-L controller CLI	To verify the AAA authorization list configuration changes pushed from DNAC in 9800-L controller CLI	Passed	
DNACJ236S_Reg_767	Verify the AAA authorization list configuration changes pushed from DNAC in 9800-CL controller CLI	To verify the AAA authorization list configuration changes pushed from DNAC in 9800-CL controller CLI	Passed	
DNACJ236S_Reg_768	Verify the AAA authorization list configuration changes pushed from DNAC in 9800-80 controller CLI	To verify the AAA authorization list configuration changes pushed from DNAC in 9800-80 controller CLI	Passed	

Rogue report parity with Prime

Logical ID	Title	Description	Status	Defect ID
DNACJ236S_Reg_769	Check Rogue report generated	To Check Whether Rogue report generated	Passed	
DNACJ236S_Reg_770	Check Rogue report generated in JSON format	To Check Whether the rogue report generated in Json file format	Passed	
DNACJ236S_Reg_771	Check rogue report is generated for last 3 hrs	To Check whether the rogue report generated for last 3 hrs	Passed	
DNACJ236S_Reg_772	Check rogue report is generated for last 24 hrs	To check whether the rogue report generated for last 24 hrs	Passed	
DNACJ236S_Reg_773	Check rogue report generated for last 7 days	To check whether the rogue report generated for 7 days	Passed	
DNACJ236S_Reg_774	Check rogue report generated for last more than 7 days	To check whether the rogue report generated for last more than 7 days	Passed	
DNACJ236S_Reg_775	Check Allowed access point list created	To check Weather the allowed access point list is created	Passed	
DNACJ236S_Reg_776	Check Allowed vendor list created	To check Weather the allowed vendor list is created	Passed	
DNACJ236S_Reg_777	Check Allowed access point list is deleted	To check Weather the allowed access point list is deleted	Passed	
DNACJ236S_Reg_778	Check Allowed vendor list deleted	To check Weather the allowed vendor list is deleted	Passed	
DNACJ236S_Reg_779	Check Rogue rule is created	To check Weather the Rogue rule is created	Passed	
DNACJ236S_Reg_780	Check Rogue rule is deleted	To check Weather the Rogue rule is deleted	Passed	

DNACJ236S_Reg_781	Check Rogue rule profile is created	To check Weather the Rogue rule profile is created	Passed	
DNACJ236S_Reg_782	Check Rogue rule profile is deleted	To check Weather the Rogue rule profile is deleted	Passed	
DNACJ236S_Reg_783	Check threat setting summary	To Check threat setting summary all the details are updated correctly	Passed	

Support configuration of advanced WLAN parameters (like CHD, others)

Logical ID	Title	Description	Status	Defect ID
DNACJ236S_Reg_784	Configure SSID creation with AAA Override- Enterprise level for WPA2 Security	To configure SSID creation with AAA Override- Enterprise level for WPA2 Security	Passed	
DNACJ236S_Reg_785	Configure SSID creation with AAA Override- Enterprise level for WPA3 Security	To configure SSID creation with AAA Override- Enterprise level for WPA3 Security	Passed	
DNACJ236S_Reg_786	Configure SSID creation with AAA Override- Enterprise level for WPA2+WPA3 Security	To configure SSID creation with AAA Override- Enterprise level for WPA2+WPA3 Security	Passed	
DNACJ236S_Reg_787	Configure SSID creation with AAA Override -Personal for WPA2 Security	To configure SSID creation with AAA Override -Personal for WPA3 Security	Passed	
DNACJ236S_Reg_788	Configure SSID creation with AAA Override -Personal for WPA3 Security	To configure SSID creation with AAA Override- Personal for WPA2 Security	Passed	
DNACJ236S_Reg_789	Configure SSID creation with AAA Override -Personal for WPA2+WPA3 Security	To configure SSID creation with AAA Override -Personal for WPA2+WPA3 Security	Passed	
DNACJ236S_Reg_790	Configure MPSK -SSID creation with Personal for WPA2 Security	To configure MPSK -SSID creation with Personal for WPA2 Security	Passed	
DNACJ236S_Reg_791	Configure SSID creation with AAA Override for Open Secured Security	To configure SSID creation with AAA Override for Open Secured Security	Passed	

DNACJ236S_Reg_792	Configure SSID creation with AAA Override for Open Security	To configure SSID creation with AAA Override for Open Security	Passed	
DNACJ236S_Reg_793	Enable the PMF for SSID Creation - Enterprise level security	To enable the PMF for SSID Creation for Enterprise level security	Passed	
DNACJ236S_Reg_794	Enable the PMF for SSID Creation Personal level security	To enable the PMF for SSID Creation for Personal level security	Passed	
DNACJ236S_Reg_795	Enable/Disable the CHD for SSID Creation - Enterprise level security	To enable/disable the CHD for SSID Creation for Enterprise level security	Passed	
DNACJ236S_Reg_796	Enable/Disable the CHD for SSID Creation -Personal level security	To enable/disable the CHD for SSID Creation for Personal level security	Passed	
DNACJ236S_Reg_797	Connect Windows Client and verify Advanced wan parameters	Connect Windows Client and verify Advanced wan parameters	Passed	
DNACJ236S_Reg_798	Connect Android Client and verify Advanced wlan parameters	Connect Android Client and verify Advanced wlan parameters	Passed	
DNACJ236S_Reg_799	Connect MAC Client and verify Advanced wlan parameters	Connect MAC Client and verify Advanced wlan parameters	Passed	
DNACJ236S_Reg_800	Connect IOS Client and verify Advanced wlan parameters	Connect IOS Client and verify Advanced wlan parameters	Passed	

Support Custom AP Join Profile configurations including SSH, username credentials update from DNAC

Logical ID	Title	Description	Status	Defect ID
DNACJ236S_Reg_801	check whether AP profile is able to create with IOS-XE	To check whether AP profile is able to create with IOS-XE	Passed	
DNACJ236S_Reg_802	check whether AP profile with IOS-XE is enabling one feature (enabling OEAP shouldn't allow security, mesh and power)	To check whether AP profile with IOS-XE is enabling one feature (enabling OEAP shouldn't allow security, mesh and power)	Passed	
DNACJ236S_Reg_803	Check whether AP Profile with IOS-XE is able to configure country code & Time Zone and Client Limit	To Check whether AP Profile with IOS-XE is able to configure country code & Time Zone and Client Limit	Passed	
DNACJ236S_Reg_804	check whether AP Profile with IOS-XE with No-Auth authentication	To check whether AP Profile with IOS-XE with EAP-TLS authentication	Passed	
DNACJ236S_Reg_805	check whether AP Profile with IOS-XE with EAP-TLS authentication	To check whether AP Profile with IOS-XE with EAP-TLS authentication	Passed	
DNACJ236S_Reg_806	check whether AP Profile with IOS-XE with EAP-PEAP authentication	To check whether AP Profile with IOS-XE with EAP-PEAP authentication	Passed	
DNACJ236S_Reg_807	check whether AP Profile with IOS-XE with EAP-FAST authentication	To check whether AP Profile with IOS-XE with EAP-FAST authentication	Passed	

DNACJ236S_Reg_808	check whether AP profile with IOS-XE able to configure the mesh and power profile	To check whether AP profile with IOS-XE able to configure the mesh and power profile	Passed	
DNACJ236S_Reg_809	Check whether AP profile with IOS-XE is able to map the network profile.	To Check whether AP profile with IOS-XE is able to map the network profile.	Passed	
DNACJ236S_Reg_810	check whether the eWLC device able to provision	To check whether the eWLC device able to provision	Passed	
DNACJ236S_Reg_811	check eWLC device whether AP Join Profile, site tag ,power profile & calendar profile created	To check eWLC device whether AP Join Profile, site tag ,power profile & calendar profile created	Passed	
DNACJ236S_Reg_812	check whether AP profile is able to create with Aire-OS	To check whether AP profile is able to create with Aire-OS	Passed	
DNACJ236S_Reg_813	check whether AP profile with Aire-OS is enabling one feature (enabling OEAP shouldn't allow security, mesh)	To Check AP profile with Aire-OS configurations SSH & telnet	Passed	
DNACJ236S_Reg_814	check whether AP profile able to configure Security and mesh	To check whether AP profile able to configure Security and mesh	Passed	
DNACJ236S_Reg_815	Check whether AP profile with Aire-OS is able to map the network profile.	To Check whether AP profile with Aire-OS is able to map the network profile.	Passed	
DNACJ236S_Reg_816	check whether the eWLC device able to provision	To check whether the eWLC device able to provision	Passed	
DNACJ236S_Reg_817	Check eWLC device whether Custom AP Group and mesh profile are created or not	To Check eWLC device whether Custom AP Group and mesh profile are created or not	Passed	

Support Client Rate limiting configuration on SSID

Logical ID	Title	Description	Status	Defect ID
DNACJ236S_Reg_818	Configure network profile and provision controller with Client rate limit as min Value	Verify profile is able to create with minimum client rate limit or not	Passed	
DNACJ236S_Reg_819	Configure network profile and provision controller with Client rate limit as max Value	Verify profile is able to create with maximum client rate limit or not	Passed	
DNACJ236S_Reg_820	Configure network profile with invalid client rate limit	Verify profile is able to create with invalid client rate limit or not	Passed	
DNACJ236S_Reg_821	Check network profile is configured only with 500 bits difference	Verify we can modify client rate limit w.r.t. 500 bits difference only or not	Passed	
DNACJ236S_Reg_822	Check network profile is configured and provisioned to 9800-L controller with max value "67000000000"	Verify configured network profile with max client rate limit "67000000000" is able to provision to 9800-L controller to not	Passed	
DNACJ236S_Reg_823	Check network profile is configured and provisioned to 9800-80 controller with max value "67000000000"	Verify configured network profile with max client rate limit "67000000000" is able to provision to 9800-80 controller to not	Passed	
DNACJ236S_Reg_824	Check network profile is configured and provisioned to 9800-CL controller with max value "67000000000"	Verify configured network profile with max client rate limit "67000000000" is able to provision to 9800-CL controller to not	Passed	

DNACJ236S_Reg_825	Check network profile is configured and provisioned to 9800-CL controller with max value "10000000000"	Verify configured network profile with max client rate limit "10000000000" is able to provision to 9800-CL controller to not	Passed	
DNACJ236S_Reg_826	Connect android client to provisioned profile and verify client rate limits applicable or not	Verify android client is able to connect or not to the profile provisioned with client rate limits	Passed	
DNACJ236S_Reg_827	Connect windows client to provisioned profile and verify rate limits applicable or not	Verify windows client is able to connect or not to the profile provisioned with client rate limits	Passed	
DNACJ236S_Reg_828	Connect surface client to provisioned profile and verify client rate limits applicable or not	Verify surface client is able to connect or not to the profile provisioned with client rate limits	Passed	
DNACJ236S_Reg_829	Connect Mac client to provisioned profile and verify client rate limits applicable or not	Verify Mac client is able to connect or not to the profile provisioned with client rate limits	Passed	
DNACJ236S_Reg_830	Configure inherited site and try to provision to controller	Verify inherited site changes are applied to controller or not after provisioning	Passed	
DNACJ236S_Reg_831	Configure network profile with client rate limit value and provision to HA setup controller	Verify provisioned network profile is deployed to secondary controller or not	Passed	

Wireless Flexible Reports - Phase 1

Logical ID	Title	Description	Status	Defect ID
DNACJ236S_Reg_832	Generate report for flexible ap distribution	Verify ap details in generated flexible distribution report	Passed	
DNACJ236S_Reg_833	Generate report for flexible ap summary	Verify ap details in generated flexible summary report	Passed	
DNACJ236S_Reg_834	Generate report for flexible ap Trend	Verify ap details in generated flexible trend report	Passed	
DNACJ236S_Reg_835	Generate report for flexible ap Top N	Verify ap details in generated flexible Top N report	Passed	
DNACJ236S_Reg_836	Generate report for flexible client distribution	Verify client details in generated flexible distribution report	Passed	
DNACJ236S_Reg_837	Generate report for flexible client summary	Verify client details in generated flexible summary report	Passed	
DNACJ236S_Reg_838	Generate report for flexible client Trend	Verify client details in generated flexible trend report	Passed	
DNACJ236S_Reg_839	Generate report for flexible client Top N	Verify client details in generated flexible Top N report	Passed	
DNACJ236S_Reg_840	Generate report for flexible Network device distribution	Verify Network device details in generated flexible distribution report	Passed	
DNACJ236S_Reg_841	Generate report for flexible Network device summary	Verify Network device details in generated flexible summary report	Passed	
DNACJ236S_Reg_842	Generate report for flexible Network device Trend	Verify Network device details in generated flexible trend report	Passed	
DNACJ236S_Reg_843	Generate report for flexible Network device Top N	Verify Network device details in generated flexible Top N report	Passed	

DNACJ236S_Reg_844	Generate flexible distribution, trend, Top Summary report for 9120 ap	Verify 9120 ap details in generated report.	Passed	
DNACJ236S_Reg_845	Generate flexible distribution, trend, Top Summary report for 9130 ap	Verify 9130 ap details in generated report.	Passed	
DNACJ236S_Reg_846	Generate flexible distribution, trend, Top Summary report for 9115 ap	Verify 9115 ap details in generated report.	Passed	
DNACJ236S_Reg_847	Generate flexible distribution, trend, Top Summary report for 9105 ap	Verify 9105 ap details in generated report.	Passed	
DNACJ236S_Reg_848	Generate flexible distribution, trend, Top Summary report for windows client	Verify windows client details in generated report.	Passed	
DNACJ236S_Reg_849	Generate flexible distribution, trend, Top Summary report for android client	Verify android client details in generated report.	Passed	
DNACJ236S_Reg_850	Generate flexible distribution, trend, Top Summary report for mac client	Verify mac client details in generated report.	Passed	
DNACJ236S_Reg_851	Generate flexible distribution, trend, Top Summary report for Ms surface client.	Verify surface client details in generated report.	Passed	

Accessibility: Menu Navigation and Search Navigation

Logical ID	Title	Description	Status	Defect ID
DNACJ236S_Reg_852	Navigate DNAC with Network devices, clients, access points.	To navigate DNAC with Network devices, clients, access points.	Passed	
DNACJ236S_Reg_853	Search & Join Network devices to DNAC	To search & join Network devices to DNAC	Passed	
DNACJ236S_Reg_854	Navigating the Telemetry page to verify design compliance	To check the design compliance of the Wireless in network setting	Passed	
DNACJ236S_Reg_855	Navigating to the IP Address Pools to verify design compliance	To check the design compliance of the IP Address Pools in network setting	Passed	
DNACJ236S_Reg_856	Configure workflow and verify back/next buttons behaviour	Verify Back/Next buttons behave as expected in the 6 GHz config page	Passed	
DNACJ236S_Reg_857	To navigate & Check the Health Score of the controller	Check the Health Score of the controller	Passed	
DNACJ236S_Reg_858	Verify configuration preview details while assigning 'Searching' site	To verify configuration preview details while assigning site	Passed	
DNACJ236S_Reg_859	Configure Client-Edit dashboard in DNAC	To Edit dashboard in Client page and make modifications in DNAC	Failed	CSCwe29479
DNACJ236S_Reg_860	Navigate the Export Clients data in DNAC page	To export Clients data in DNAC while we can navigate	Passed	
DNACJ236S_Reg_861	Verify AP mac address in Topology view	To verify AP mac address in Topology view	Passed	

DNACJ236S_Reg_862	Navigate the Ap location and mac address on the AP Page	To navigate the Ap location and mac address on the AP Page	Passed	
DNACJ236S_Reg_863	Searching the full screen option of Maps	To search the full screen option of Maps in 360 degree view	Passed	
DNACJ236S_Reg_864	Validate & Navigate the details in generated report	To validate details in generated report Correctly or not	Passed	
DNACJ236S_Reg_865	Navigate DNAC dashboard can be edited and customized	To check if the dashboard can be edited and customized	Passed	
DNACJ236S_Reg_866	Search network devices based on device type and health in DNAC page	To search network devices based on device type and health	Passed	

Ability to support power profile across APs from DNA Center

Logical ID	Title	Description	Status	Defect ID
DNACJ236S_Reg_867	creating power profile for ap	to check whether power profile created or not	Passed	
DNACJ236S_Reg_868	creating calendar profile	to check whether calendar profile created or not	Passed	
DNACJ236S_Reg_869	checking whether power profile in eWLC or not	to check whether power profile created or not in eWLC	Failed	CSCwe30392
DNACJ236S_Reg_870	create power profile rule with radio	to check whether power profile created or not in eWLC	Passed	
DNACJ236S_Reg_871	create power profile rule with radio 6GHz	to check whether power profile created or not in eWLC	Passed	
DNACJ236S_Reg_872	create power profile rule with radio 5GHz	to check whether power profile created or not in eWLC	Passed	
DNACJ236S_Reg_873	create power profile rule with radio 5GHz secondary	to check whether power profile created or not in eWLC	Passed	
DNACJ236S_Reg_874	create power profile rule with radio 2.4GHz	to check whether power profile created or not in eWLC	Passed	
DNACJ236S_Reg_875	create power profile rule with radio with parameter spatial stream	to check whether power profile created or not in eWLC	Passed	
DNACJ236S_Reg_876	create power profile rule with radio with parameter state	to check whether power profile created or not in eWLC	Passed	

DNACJ236S_Reg_877	create power profile rule with Ethernet	to check whether power profile created or not in eWLC	Passed	
DNACJ236S_Reg_878	create calendar profile with daily	to check whether power profile created or not in eWLC	Passed	
DNACJ236S_Reg_879	create calendar profile with weekly	to check whether power profile created or not in eWLC	Passed	
DNACJ236S_Reg_880	create calendar profile with monthly	to check whether power profile created or not in eWLC	Passed	

Client-360 Assurance enhancements

Logical ID	Title	Description	Status	Defect ID
DNACJ236S_Reg_881	Adding different network devices in DNAC	To add network devices like switches, Controllers to DNAC and check if the network devices gets added to DNAC or not	Passed	
DNACJ236S_Reg_882	Connecting a Windows endpoint to a WLAN and check the client health	To connect a Window endpoint to the wlan created and check if the clients health is shown in the wireless client summary	Passed	
DNACJ236S_Reg_883	Check client onboarding failure reasons and with more data on events, impact analysis, etc	To check client onboarding failure reasons and with more data on events, impact analysis, etc	Passed	
DNACJ236S_Reg_884	Check impact analysis data of failed client association	To check impact analysis data of failed client association	Passed	
DNACJ236S_Reg_885	Check event viewer data of failed client association with site selection	To check event viewer data of failed client association with site selection	Passed	
DNACJ236S_Reg_886	Connecting a Android endpoint to a WLAN and check the client health	To connect a Android endpoint to the wlan created and check if the clients health is shown in the wireless client summary	Passed	
DNACJ236S_Reg_887	Connecting a IOS endpoint to a WLAN and check the client health	To connect a IOS endpoint to the wlan created and check if the clients health is shown in the wireless client summary	Passed	

DNACJ236S_Reg_888	Connecting a Surface Go endpoint to a WLAN and check the client health	To connect a Surface Go endpoint to the wlan created and check if the clients health is shown in the wireless client summary	Passed	
DNACJ236S_Reg_889	Connecting a iPhone endpoint to a WLAN and check the client health	To connect a iPhone endpoint to the wlan created and check if the clients health is shown in the wireless client summary	Passed	
DNACJ236S_Reg_890	Connecting a Mac OS endpoint to a WLAN and check the client health	To connect a Mac OS endpoint to the wlan created and check if the clients health is shown in the wireless client summary	Passed	
DNACJ236S_Reg_891	Setting the timeline chart for various endpoints	To set the time line chart for various endpoints	Passed	
DNACJ236S_Reg_892	Checking the client onboarding time for various end points	To check the client onboarding time for various endpoints	Passed	
DNACJ236S_Reg_893	Verifying the Device info ,Connectivity & RF Details for various clients	To verify the device info, connectivity & Rf details for various clients	Passed	
DNACJ236S_Reg_894	Checking the deleted client details in DNAC	To check the deleted client details in DNAC	Passed	
DNACJ236S_Reg_895	Validating the RSSI & SNR values for various end point	To Validate the RSSI & SNR values for various end points	Passed	
DNACJ236S_Reg_896	Check the client roaming times in client health dashboard in Assurance page	To check the client roaming times in client health page and check if the details show are correct.	Passed	

Config Wireless

Logical ID	Title	Description	Status	Defect ID
DNACJ236S_Config_1	JA Locale : Users and roles export issue	JA Locale : Users and roles export issue	Failed	CSCwe36352



Related Documents

- [Related Documentation, on page 180](#)

Related Documentation

Cisco Catalyst 9800 Series Wireless Controller Software Configuration Guide

https://www.cisco.com/c/en/us/td/docs/wireless/controller/9800/17-11/config-guide/b_wl_17_eleven_cg.html

Cisco Catalyst 9800 Series Wireless Controller 17.11 Configuration Guide

https://www.cisco.com/c/en/us/td/docs/wireless/controller/9800/17-11/config-guide/b_wl_17_eleven_cg.html

Cisco Catalyst 9800 Series Wireless Controller 17.11 Release Notes

<https://www.cisco.com/c/en/us/td/docs/wireless/controller/9800/17-11/release-notes/rn-17-11-9800.html>

Release Notes for Cisco Spaces

<https://www.cisco.com/c/en/us/td/docs/wireless/spaces/release-notes/b-cisco-spaces-rn/m-march-2023.html>

Cisco Catalyst 9600 Series Switches 17.11 Release Notes

https://www.cisco.com/c/en/us/td/docs/switches/lan/catalyst9600/software/release/17-11/release_notes/ol-17-11-9600.html

Release Notes Cisco Digital Network Architecture Center

<https://www.cisco.com/c/en/us/td/docs/cloud-systems-management/network-automation-and-management/dna-center-platform/2-3-6/release-notes/b-dnac-platform-rn-2-3-6.html>

PI 3.10 User Guide

https://www.cisco.com/c/en/us/td/docs/net_mgmt/prime/infrastructure/3-10/user/guide/ciscoprimeinfrastructure_3_10_userguide.html

ISE 3.2 Release Notes

https://www.cisco.com/c/en/us/td/docs/security/ise/3-2/release_notes/b_ise_32_RN.html