



Test Results Summary for Cisco DNA Center Automation & Assurance (Release Version 2.3.5)

First Published: 2023-01-23

Last Modified: 2023-01-27

Americas Headquarters

Cisco Systems, Inc.
170 West Tasman Drive
San Jose, CA 95134-1706
USA
<http://www.cisco.com>
Tel: 408 526-4000
800 553-NETS (6387)
Fax: 408 527-0883



CONTENTS

CHAPTER 1

Overview 1

Cisco DNA Center test 2

CHAPTER 2

Test topology and Environment Matrix 7

Test Topology 8

Component Matrix 9

What's New ? 11

Open Caveats 12

Resolved Caveats 13

CHAPTER 3

New Features 15

Pan Assurance event viewer (Phase-3) 16

DHCP Dashboard Enhancement 21

Multi WLC Support for MRE based client troubleshooting 23

Application experience for flex and fabric 25

Support for AP Authorization Configuration 27

Rogue report parity with Prime 30

Advanced WLAN Parameters Configuration Support for Enterprise and Guest Wireless Networks 32

Support Custom AP Join Profile configurations including SSH, username credentials update from DNAC 34

Client Rate Limit Configuration Support for Enterprise and Guest Wireless Networks 36

Wireless Flexible Reports - Phase 1 39

Accessibility: Menu Navigation and Search Navigation 41

Support for AP Power Profiles 43

Client-360 Dashboard Enhancements 46

Support scheduling of SSID broadcasting 49

Open RRM Phase 2 - RF Simulator 54

CHAPTER 4

Regression Features 57

Overall and Network Health Dashboard 59

Health Analytics 63

Network Device 65

Endpoints 360 67

Support for next set of AP configurations from DNAC 69

Support recurrent configuration of AP and radio parameters 72

AP Usage and Client Breakdown Report 78

Assurance workflow changes to support AP Refresh 81

Smart Licencing 82

All Data Report - Inventory and SWIM 84

3D Maps Enhancements Phase 2 86

Worst Interferer 89

Called Station ID 91

Swim Enhancement 94

Site 360/Dashboard Landing Page 96

Managing WLC HA SSO via DNAC - Enhancements 98

Network Insights 2-Radio Insights based on Client Experience 99

Inventory: Support for Maintenance mode 101

AP Reboot for Troubleshooting 104

Support for recurring discovery 106

Support configuration of advanced WLAN parameters 108

DNA Dashboard for Open RRM 111

Unique clients and users summary 113

Rolling AP Upgrade 115

Busiest AP 117

Busiest Client Report 119

Show Rogue client location in the threat 360 121

RRM - Support for General Parameters 123

Troubleshoot Certification 2 - WLC Unmonitored 125

Support for Custom Policy Tag for C9800 128

Ability to manage multiple AP groups /Policy tags 131

Support AP refresh across different WLCs	132
Enhancements on AP config flow	133
Channel Change Report	136
Enhancements for mobility peer configuration	139
Support phase-2 Mesh configurations on wireless LAN controllers	142
Enable Multiple Anchor WLCs configuration for SSID	146
Support for manually disabling clients on wireless controller	148
Top N Site - SLA Dashboard - Client KPIs	149
Support tri radio configuration on Access Points	152
Support for CCKM configuration on SSID	155
Client Global Events viewer	159
Troubleshooting tab on AP-360	161
Channel Utilization Breakout	164
Issues correlation[AP-down issue]	166
Support custom WLAN profile configuration from DNAC	168
Client Detail Report Enhancements - Device Analytics Insights	172
Config Wireless	174

CHAPTER 5**Related Documents 175**

Related Documentation	176
-----------------------	-----



Overview

- [Cisco DNA Center test](#) , on page 2

Cisco DNA Center test

Cisco DNA Center test , an integral part of the enterprise wireless solution, is a program that validates various Cisco Wireless Products and Features. This is achieved by testing the latest versions of Cisco wireless products

Cisco DNA Center for Japan , in turn is an add-on testing at the solution level, where the requirements gathered are specific to Japanese usage and market. The requirements are derived based on the following:

- New features in DNA center 2.3.5
- High priority scenarios and basic regression features
- Inputs from Cisco SEs/ TAC

The test execution is carried out on selected Cisco Wireless LAN products, which affect the Japanese segment that are prioritized by Cisco Japan team.

The following products are covered in the test execution:

- Cisco Catalyst 9800 Series Wireless Controller
- Cisco Catalyst 9800-CL Wireless Controller for Cloud
- Cisco Embedded Wireless Controller on Catalyst Access Points
- Cisco Spaces
- Cisco Spaces Connector
- ISE(VM)
- Cisco ISR 1100
- Cisco AP c9115
- Cisco AP c9120
- Cisco AP c9130
- Cisco AP c9105
- Access Point 4800
- Access Point 1810

Acronyms

Acronym	Description
AAA	Authentication Authorization and Accounting
ACL	Access Control List
ACS	Access Control Server
AKM	Authentication Key Management
AP	Access Point

Acronym	Description
API	Application Programming Interface
APIC-EM	Application Policy Infrastructure Controller - Enterprise Module
ATF	Air-Time Fairness
AVC	Application Visibility and Control.
BGN	Bridge Group Network
BLE	Bluetooth Low Energy
BYOD	Bring Your Own Device
CA	Central Authentication
CAC	Call Admissions Control
CAPWAP	Control and Provisioning of Wireless Access Point
CCKM	Cisco Centralized Key Management
CCN	Channel Change Notification
CCX	Cisco Compatible Extensions
CDP	Cisco Discovery Protocol
CKIP	Cisco Key Integrity Protocol
CMX	Connected Mobile Experience
CVBF	Cisco Vector Beam Forming
CWA	Central Web Authentication
DCA	Dynamic Channel Assignment
DMZ	Demilitarized Zone
DNS	Domain Name System
DNA-C	Digital Network Architecture Center
DTIM	Delivery Traffic Indication Map
DSCP	Differentiated Services Code Point
DTLS	Datagram Transport Layer Security
EAP	Extensible Authentication Protocol
EULA	End User Licence Agreement
EWC	Embedded Wireless Controller
FLA	Flex Local Authentication
FLS	Flex Local Switching
FT	Fast Transition
FTP	File Transfer Protocol

Acronym	Description
FW	Firm Ware
HA	High Availability
H-REAP	Hybrid Remote Edge Access Point
IOS	Internetwork Operating System
ISE	Identity Service Engine
ISR	Integrated Services Router
LAG	Link Aggregation
LEAP	Lightweight Extensible Authentication Protocol
LSS	Location Specific Services
LWAPP	Lightweight Access Point Protocol
MAP	Mesh Access Point
MCS	Modulation Coding Scheme
MFP	Management Frame Protection
mDNS	multicast Domain Name System
MIC	Message Integrity Check
MSE	Mobility Service Engine
MTU	Maximum Transmission Unit
NAC	Network Admission Control
NAT	Network Address Translation
NBAR	Network Based Application Recognition
NCS	Network Control System
NGWC	Next Generation Wiring closet
NMSP	Network Mobility Services Protocol
OEAP	Office Extended Access Point
PEAP	Protected Extensible Authentication Protocol
PEM	Policy Enforcement Module
PI	Prime Infrastructure
PMF	Protected Management Frame
POI	Point of Interest
PPPoE	Point-to-Point Protocol over Ethernet
PSK	Pre-shared Key
QOS	Quality of service

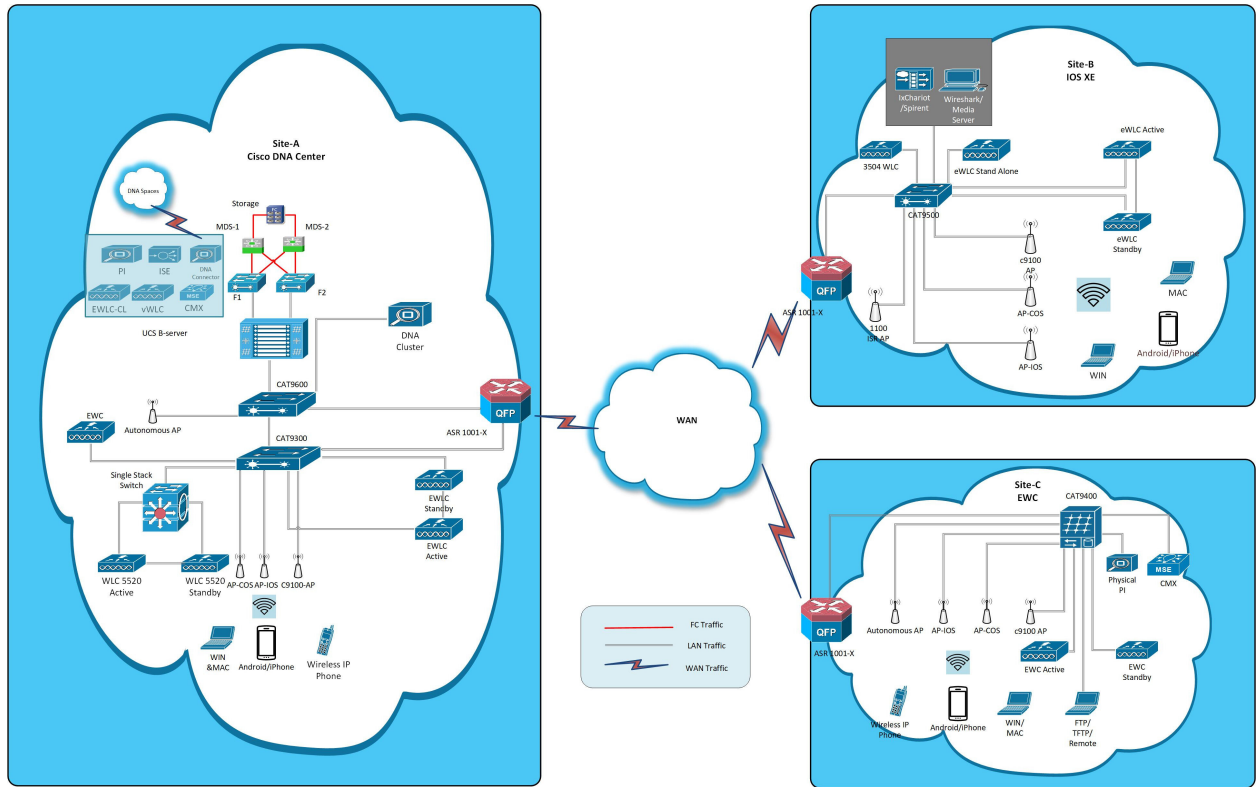
Acronym	Description
RADIUS	Remote Authentication Dial-In User Service
RAP	Root Access Point
RP	Redundancy Port
RRM	Radio Resource Management
SDN	Software Defined Networking
SOAP	Simple Object Access Protocol
SFTP	Secure File Transfer Protocol
SNMP	Simple Network Management Protocol
SS	Spatial Stream
SSID	Service Set Identifier
SSO	Single Sign On
SSO	Stateful Switch Over
SWIM	Software Image Management
TACACS	Terminal Access Controller Access Control System
TCP	Transmission Control Protocol
TFTP	Trivial File Transfer Protocol
TLS	Transport Layer Security
UDP	User Datagram Protocol
vWLC	Virtual Wireless LAN Controller
VPC	Virtual port channel
VPN	Virtual Private Network
WEP	Wired Equivalent Privacy
WGB	Workgroup Bridge
wIPS	Wireless Intrusion Prevention System
WLAN	Wireless LAN
WLC	Wireless LAN Controller
WPA	Wi-Fi Protected Access
WSM	Wireless Security Module



Test topology and Environment Matrix

- [Test Topology, on page 8](#)
- [Component Matrix, on page 9](#)
- [What's New ?, on page 11](#)
- [Open Caveats, on page 12](#)
- [Resolved Caveats, on page 13](#)

Test Topology



Component Matrix

Category	Component	Version
Controller	Cisco Catalyst 9800-40 Wireless Controller	17.11
	Cisco Catalyst 9800-80 Wireless Controller	17.11
	Cisco Catalyst 9800-CL Wireless Controller for Cloud	17.11
	Cisco Catalyst 9800-L Wireless Controller	17.11
	Cisco Embedded Wireless Controller on Catalyst Access Points - 9120 (EWC)	17.11
	Virtual Controller	8.10.121.0
Applications	Cisco DNA Center	2.3.5
	Cisco Spaces	Cloud (Dec 2022)
	Cisco Spaces Connector	2.3.4 and 3.0
	Prime Infrastructure (Virtual Appliance, UCS based)	3.9.0.0
	ISE(VM)	3.1.0
	Cisco Jabber for Windows, iPhone	14.1.5
	Cisco Air Provisioning App	1.7.4
	Cisco Wireless App	1.1.113
Access Point	Cisco AP 9115	17.11
	Cisco AP 9120	17.11
	Cisco AP 9130	17.11
	Cisco AP 9105	17.11
	Cisco 1100 ISR	17.11
	Cisco AP 4800	15.3
	Cisco AP 1810	15.3

Category	Component	Version	
Switch	Cisco Cat 9300	17.9	
	Cisco Cat 9200L	17.9	
	Cisco Cat 9800	17.9	
	Cisco 3750V2 switch	15.0(2)SE2	
	Cisco Cat 6509-E	15.1(1)SY1	
Chipset	5300, 6300 AGN	15.40.41.5058	
	7265 AC	21.40.2	
	Airport Extreme	7.9.1	
Client	Operating System(JOS)	Windows 10	
	Apple Mac Book Pro, Apple Mac Book Air (JP Locale)	Mac OS 13	
	iPad Pro	iOS 16	
	iPhone 6, 6S ,7 & 11 (JP Locale)	iOS 16	
	Samsung Galaxy S7,S10, Nexus 6P, Sony Xperia XZ	Android 13	
	Wireless IP Phone 8821	11.0.5	
	End points	Apple Mac	12.6.3
		iPhone 6,6S ,7 & 11	
		Windows 10	
		Windows 11	
Samsung Galaxy S4, S7,S10, Nexus 6P, Sony Xperia			
Cisco AnyConnect VPN Client	4.10.05111		
MS surface GO	Windows 10 & 11		
Module	Hyper location Module	NA	
Active Directory	AD	Windows server 2022	
Call Control	Cisco Unified Communications Manager	12.5.0.99832-3/12.5.0.99832-3-1(JP)	
Browsers	IE	11.0	
	Mozilla Firefox	109.0	
	Safari	16.3	
	Chrome	109.0.5414.75	

What's New ?

DNA Center

- Pan Assurance event viewer (Phase - 3)
- DHCP Dashboard Enhancement
- Multi WLC Support for MRE based client troubleshooting
- Application experience for flex and fabric
- Support for AP Authorization Configuration
- Rogue report parity with Prime
- Advanced WLAN Parameters Configuration Support for Enterprise and Guest Wireless Networks
- Support Custom AP Join Profile configurations including SSH, username credentials update from DNAC
- Client Rate Limit Configuration Support for Enterprise and Guest Wireless Networks
- Wireless Flexible Reports - Phase 1
- Accessibility: Menu Navigation and Search Navigation
- Support for AP Power Profiles
- Client-360 Dashboard Enhancements
- Support scheduling of SSID broadcasting
- Open RRM Phase 2 - RF Simulator

Open Caveats

Bug ID	Title
CSCwd50009	Getting an undefined error message for any Device name, IP address and WLC Info in Topology View
CSCwd53944	Group Pair Communication causes report templates issues for generating any reports
CSCwd56492	Schedule Report - Overall issue is seen
CSCwd59348	Network Hierarchy Area names are showing similar for multiple space profile creations
CSCwd59823	Dashboard Library: Unable to export and delete dashboards for profiles like test/test
CSCwd63543	Refresh option is unable seen clearly in Activities/task page and an extra scroll bar seen
CSCwd65023	Rogue reports are not generating, getting error while generating in Rogue and awips
CSCwd67628	AP Authorization List X button is closing all instances
CSCwd69895	Policy page-showing Access control policy created successfully without flow
CSCwd80251	JA Locale: IP & URL Access Control Policies Export issue
CSCwd80463	Page is loading when modifying the Managed AP location while provisioning the controller
CSCwe03872	TIME RANGE for report is in help guide but not shown in UI

Resolved Caveats

Bug ID	Title
CSCwd49960	Dashboard Library: Blank data is showing while adding dashlets
CSCwd49991	Able to configure empty double quotes for SSID
CSCwd50570	After adding Switch Collapse All and Expand All is not working
CSCwd50594	Duplicate dashboard library error validation is cropped
CSCwd50612	Workflows: Unable to scroll and see all the information in Discover Devices Advanced Settings
CSCwd50617	JA Locale: 802.11w name missed and some headlines names are showing vertically
CSCwd51141	Templates Hub: New Project/Template close button shows at templates home page
CSCwd53098	JA Locale: Client/Network Health Template select filters are not working
CSCwd53458	Toggle Topology View zoom out causes webpage loading issues
CSCwd54057	Additional scroll bars are seen in Client Onboarding tab
CSCwd67955	Name with special characters are allowing in AP Join Profile
CSCwd68761	Policy Rule While Creating Showing Error
CSCwd68820	Observed multiple issues while configuring Access Point Refresh
CSCwd69576	JA Locale: Unable to apply Time Range in Application-Assurance
CSCwd81715	JA Locale:Time Range is missing for Assurance-Issues and Events
CSCwd81728	JA Locale:Assurance-Issues and Events export issue
CSCwd87000	Unable to select Specific Date Track Client
CSCwd94140	Workflow is stopped for provision template
CSCwd95403	DNAC:Assurance>>Issues and Events>>multiple clicks on calendar leads reducing the time
CSCwe16764	Unable to continue Configure Access Points workflow



New Features

- [Pan Assurance event viewer \(Phase-3\), on page 16](#)
- [DHCP Dashboard Enhancement, on page 21](#)
- [Multi WLC Support for MRE based client troubleshooting, on page 23](#)
- [Application experience for flex and fabric, on page 25](#)
- [Support for AP Authorization Configuration, on page 27](#)
- [Rogue report parity with Prime, on page 30](#)
- [Advanced WLAN Parameters Configuration Support for Enterprise and Guest Wireless Networks, on page 32](#)
- [Support Custom AP Join Profile configurations including SSH, username credentials update from DNAC, on page 34](#)
- [Client Rate Limit Configuration Support for Enterprise and Guest Wireless Networks, on page 36](#)
- [Wireless Flexible Reports - Phase 1, on page 39](#)
- [Accessibility: Menu Navigation and Search Navigation, on page 41](#)
- [Support for AP Power Profiles, on page 43](#)
- [Client-360 Dashboard Enhancements, on page 46](#)
- [Support scheduling of SSID broadcasting, on page 49](#)
- [Open RRM Phase 2 - RF Simulator, on page 54](#)

Pan Assurance event viewer (Phase-3)

Logical ID	Title	Description	Status	Defect ID
DNACJ235S_PAEV_1	Viewing events for Devices last 3 hours	To check the device's events for last 3 hours	Passed	CSCwd81715
DNACJ235S_PAEV_2	Viewing events for Devices last 24 hours	To check the device's events for last 24 hours	Passed	CSCwd95403
DNACJ235S_PAEV_3	Viewing events for Devices last 7 days	To check the device's events for last 7 days	Passed	
DNACJ235S_PAEV_4	Viewing events for endpoints last 7 days	To check the Endpoints events for last 7 days	Passed	
DNACJ235S_PAEV_5	Viewing events for endpoints last 24 hours	To check the Endpoints events for last 24 hours	Passed	CSCwd69576
DNACJ235S_PAEV_6	Viewing events for endpoints last 3 hours	To check the Endpoints events for last 3 hours	Passed	CSCwd81728
DNACJ235S_PAEV_7	Viewing events for devices events with filter all	To check the devices events with filter all	Passed	
DNACJ235S_PAEV_8	Viewing events for devices events with filter any	To check the devices events with filter all	Passed	
DNACJ235S_PAEV_9	Viewing events for endpoints events with filter all	To check the Endpoints events with filter all	Passed	
DNACJ235S_PAEV_10	Viewing events for endpoints with filter any	To check the Endpoints events with filter any	Passed	
DNACJ235S_PAEV_11	Viewing events for devices events with filter all	To check the devices events with filter any and select the column name as event name	Passed	
DNACJ235S_PAEV_12	Viewing events for devices events with filter all	To check the devices events with filter any and select the column name as Timestamp	Passed	

DNACJ235S_PAEV_13	Viewing events for devices events with filter all	To check the devices events with filter any and select the column name as Device name	Passed	
DNACJ235S_PAEV_14	Viewing events for devices events with filter all	To check the devices events with filter any and select the column name as Event type	Passed	
DNACJ235S_PAEV_15	Viewing events for devices events with filter all	To check the devices events with filter any and select the column name as Device Ip	Passed	
DNACJ235S_PAEV_16	Viewing events for devices events with filter all	To check the devices events with filter any and select the column name as MAC address	Passed	
DNACJ235S_PAEV_17	Viewing events for devices events with filter all	To check the devices events with filter any and select the column name as wireless controller	Passed	
DNACJ235S_PAEV_18	Viewing events for devices events with filter all	To check the devices events with filter any and select the column name as Band with 2.4ghz	Passed	
DNACJ235S_PAEV_19	Viewing events for devices events with filter all	To check the devices events with filter any and select the column name as Band with 5ghz	Passed	
DNACJ235S_PAEV_20	Viewing events for devices events with filter all	To check the devices events with filter any and select the column name as Band with 6ghz	Passed	
DNACJ235S_PAEV_21	Viewing events for devices events with filter any	To check the devices events with filter any and select the column name as Event name	Passed	

DNACJ235S_PAEV_22	Viewing events for devices events with filter any	To check the devices events with filter any and select the column name as Timestamp	Passed	
DNACJ235S_PAEV_23	Viewing events for devices events with filter any	To check the devices events with filter any and select the column name as Device name	Passed	
DNACJ235S_PAEV_24	Viewing events for devices events with filter any	To check the devices events with filter any and select the column name as Event type	Passed	
DNACJ235S_PAEV_25	Viewing events for devices events with filter any	To check the devices events with filter any and select the column name as Device Ip	Passed	
DNACJ235S_PAEV_26	Viewing events for devices events with filter any	To check the devices events with filter any and select the column name as MAC address	Passed	
DNACJ235S_PAEV_27	Viewing events for devices events with filter any	To check the devices events with filter any and select the column name as Wireless controller	Passed	
DNACJ235S_PAEV_28	Viewing events for devices events with filter any	To check the devices events with filter any and select the column name as Band with 2.4ghz	Passed	
DNACJ235S_PAEV_29	Viewing events for devices events with filter any	To check the devices events with filter any and select the column name as Band with 5ghz	Passed	
DNACJ235S_PAEV_30	Viewing events for devices events with filter any	To check the devices events with filter any and select the column name as Band with 5ghz	Passed	

DNACJ235S_PAEV_31	Viewing events for devices events with filter any	To check the devices events with filter any and select the column name as Band with 6ghz	Passed	
DNACJ235S_PAEV_32	Viewing events for devices events with filter all	To check the devices events with filter any and select the column name as event Name	Passed	
DNACJ235S_PAEV_33	Viewing events for devices events with filter all	To check the devices events with filter any and select the column name as Severity	Passed	
DNACJ235S_PAEV_34	Viewing events for devices events with filter all	To check the devices events with filter any and select the column name as Timestamp	Passed	
DNACJ235S_PAEV_35	Viewing events for devices events with filter all	To check the devices events with filter any and select the column name as Device name	Passed	
DNACJ235S_PAEV_36	Viewing events for devices events with filter all	To check the devices events with filter any and select the column name as Event type	Passed	
DNACJ235S_PAEV_37	Viewing events for devices events with filter all	To check the devices events with filter any and select the column name as Device IP	Passed	
DNACJ235S_PAEV_38	Viewing events for devices events with filter any	To check the devices events with filter any and select the column name as Event name	Passed	
DNACJ235S_PAEV_39	Viewing events for devices events with filter any	To check the devices events with filter any and select the column name as Severity	Passed	

DNACJ235S_PAEV_40	Viewing events for devices events with filter any	To check the devices events with filter any and select the column name as Timestamp	Passed	
DNACJ235S_PAEV_41	Viewing events for devices events with filter any	To check the devices events with filter any and select the column name as Device name	Passed	
DNACJ235S_PAEV_42	Viewing events for devices events with filter any	To check the devices events with filter any and select the column name as Event type	Passed	
DNACJ235S_PAEV_43	Viewing events for devices events with filter any	To check the devices events with filter any and select the column name as Device Ip	Passed	

DHCP Dashboard Enhancement

Logical ID	Title	Description	Status	Defect ID
DNACJ235S_NSDHCP_01	Check the failure reason for DHCP lease time	Check the Client events DHCP data contains DHCP Lease time parameter	Passed	
DNACJ235S_NSDHCP_02	Check the Client events DHCP data contains DHCP MAC address received form DHCP packets	Verify the Client events DHCP data contains DHCP MAC address received form DHCP packets or not	Passed	
DNACJ235S_NSDHCP_03	config IPSLA for the DHCP server with dhcp probes	Verify IP SLA CLIs output and check whether it show no response or not.	Passed	
DNACJ235S_NSDHCP_04	DHCP Server replying with NAC IP	Simulate a scenario of DHCP Server replying with NAC and check NAC IP is included NSA DHCP Client stats	Passed	
DNACJ235S_NSDHCP_05	Netmask, GW IP addresses, and VLAN shall be present as part of DHCP client stats.	Check the Client events, DHCP stats should contains Netmask, GW IP addresses, and VLAN	Passed	
DNACJ235S_NSDHCP_06	Server will not respond, and IP SLA CLIs output should show not reachable	Config IPSLA for the DHCP server with icmp probes. Simulate the scenario of DHCP server down	Passed	
DNACJ235S_NSDHCP_07	Configure Wrongful client MAC and verify DHCP client stats.	Simulate a scenario where Client sends wrongful MAC and check if DHCP stats include the wrongful MAC in the stats	Failed	CSCwd80251

DNACJ235S_NSDHCP_08	Client event NSA DHCP stats include the Decline IP for which DHCP decline is sent.	Simulate a scenario where Client responds with Decline and check the decline IP is present in NSA DHCP stats in the client event	Passed	
DNACJ235S_NSDHCP_09	Observe memory leaks and crash during DHCP failure	Simulate few client join and some of these scenarios and check memory	Passed	
DNACJ235S_NSDHCP_10	Perform roaming and checking the DHCP failure reason	To verify DHCP dashlet during roaming	Failed	CSCwd69895

Multi WLC Support for MRE based client troubleshooting

Logical ID	Title	Description	Status	Defect ID
DNACJ235S_MWLCS_1	Generate Logs for RF Issues	To generate Logs for RF Issues	Passed	
DNACJ235S_MWLCS_2	Generate Logs for RRM (Radio Resource Management) Issues	To generate Logs for RRM (Radio Resource Management) Issues	Passed	
DNACJ235S_MWLCS_3	Generate Logs for WLC Platform Issues	To generate Logs for WLC Platform Issues	Passed	
DNACJ235S_MWLCS_4	Generate Logs for AP Join/Connectivity Issues	To generate Logs for AP Join/Connectivity Issues	Passed	
DNACJ235S_MWLCS_5	Generate Logs for Client Connectivity Issues	To generate Logs for Client Connectivity Issues	Passed	
DNACJ235S_MWLCS_6	Generate Logs for Guest Central Web Authentication(CWA) or Local Web Authentication(LWA) Issues	To generate Logs for Guest Central Web Authentication(CWA) or Local Web Authentication(LWA) Issues	Passed	
DNACJ235S_MWLCS_7	Generate Logs for License Issues	To generate Logs for License Issues	Passed	
DNACJ235S_MWLCS_8	Generate Logs for High Availability issues	To generate Logs for High Availability issues	Passed	
DNACJ235S_MWLCS_9	Generate Logs for Windows Client Connectivity Issues	To generate Logs for Windows Client Connectivity Issues	Passed	
DNACJ235S_MWLCS_10	Generate Logs for Android Client Connectivity Issues	To generate Logs for Android Client Connectivity Issues	Passed	
DNACJ235S_MWLCS_11	Generate Logs for MAC Client Connectivity Issues	To generate Logs for MAC Client Connectivity Issues	Passed	

DNACI235S_MWLCS_12	Generate Logs for Surface Client Connectivity Issues	To generate Logs for Surface Client Connectivity Issues	Passed	
DNACI235S_MWLCS_13	Generate Logs for Wired Client Connectivity Issues	To generate Logs for Wired Client Connectivity Issues	Passed	
DNACI235S_MWLCS_14	Generate WLC troubleshoot logs with incorrect MAC address	To generate WLC troubleshoot logs with incorrect MAC address	Passed	
DNACI235S_MWLCS_15	Generate WLC troubleshoot logs with incorrect IP address	To generate WLC troubleshoot logs with incorrect IP address	Passed	

Application experience for flex and fabric

Logical ID	Title	Description	Status	Defect ID
DNACJ235S_FFabric_1	Enable Application Telemetry	To enable Application Telemetry	Passed	
DNACJ235S_FFabric_2	Disable Application Telemetry	To disable Application Telemetry	Passed	
DNACJ235S_FFabric_3	Update Telemetry Settings	To update Telemetry Settings	Passed	
DNACJ235S_FFabric_4	Verify Application experience of a Host for 3 hours	To verify Application experience of a Host for 3 hours	Passed	
DNACJ235S_FFabric_5	Verify Application experience of a Host for 24 hours	To verify Application experience of a Host for 24 hours	Passed	
DNACJ235S_FFabric_6	Verify Application experience of a Host for 7 days	To verify Application experience of a Host for 7 days	Passed	
DNACJ235S_FFabric_7	Verify Application experience of a Network Device	To verify Application experience of a Network Device	Passed	
DNACJ235S_FFabric_8	Monitor the Health of all Applications	To monitor the Health of all Applications	Passed	
DNACJ235S_FFabric_9	Monitor the Health of an Application	To monitor the Health of an Application	Passed	
DNACJ235S_FFabric_10	Configure Health Score Settings for Applications	To configure Health Score Settings for Applications	Passed	
DNACJ235S_FFabric_11	Configure Flow Monitor and verify details in Client 360 page	To configure Flow Monitor and to verify details in Client 360 page	Passed	
DNACJ235S_FFabric_12	Configure QOS and verify details in Client 360 page	To configure QOS and to verify details in Client 360 page	Passed	

DNACJ235S_FFabric_13	Push flex/fabric configuration from DNAC to EWLC	To push flex/fabric configuration from DNAC to EWLC	Passed	
DNACJ235S_FFabric_14	Connect Windows Client and verify Application details for flex/fabric	To connect Windows Client and to verify Application details for flex/fabric	Passed	
DNACJ235S_FFabric_15	Connect Android Client and verify Application details for flex/fabric	To connect Android Client and to verify Application details for flex/fabric	Passed	
DNACJ235S_FFabric_16	Connect MAC Client and verify Application details for flex/fabric	To connect MAC Client and to verify Application details for flex/fabric	Passed	
DNACJ235S_FFabric_17	Connect IOS Client and verify Application details for flex/fabric	To connect IOS Client and to verify Application details for flex/fabric	Passed	
DNACJ235S_FFabric_18	Connect Go Plus Client and verify Application details for flex/fabric	To connect Go Plus Client and to verify Application details for flex/fabric	Passed	

Support for AP Authorization Configuration

Logical ID	Title	Description	Status	Defect ID
DNACJ235S_AAA_1	Check the AP Authorization list configuration is availability in DNAC	To check the AP Authorization list configuration is availability in DNAC	Passed	
DNACJ235S_AAA_2	Check Local Authorization List is creation with MAC Address	To check Local Authorization List creation with MAC Address	Passed	
DNACJ235S_AAA_3	Check Local Authorization List creation with Serial number	To check Local Authorization List creation with Serial number	Passed	
DNACJ235S_AAA_4	Check Local Authorization List is created with both MAC Address and Serial number	To check Local Authorization List is created with both MAC Address and Serial number	Passed	
DNACJ235S_AAA_5	Check Local Authorization list is Deleted without any error	To check Local Authorization list is deleted without any error	Passed	
DNACJ235S_AAA_6	Check AAA Authorization list with Authorize AP against MAC Address is created without any error	To check AAA Authorization list with Authorize AP against MAC Address is created without any error	Passed	
DNACJ235S_AAA_7	Check AAA Authorization list with Authorize AP against Serial Number is created without any error	To check AAA Authorization list with Authorize AP against Serial Number is created without any error	Passed	

DNACJ235S_AAA_8	Check AAA Authorization list with both Authorize AP against MAC Address and Authorize AP against Serial Number is created without any error	To check AAA Authorization list with both Authorize AP against MAC Address and Authorize AP against Serial Number is created without any error	Passed	
DNACJ235S_AAA_9	Check Authorization list is created both local and AAA Configuration or not	To check Authorization list is created both local and AAA Configuration or not	Passed	
DNACJ235S_AAA_10	Check whether the local authorization configuration is pushed to 9800-L controller or not	To check whether the local authorization configuration is pushed to 9800-L controller or not	Passed	CSCwd53458
DNACJ235S_AAA_11	Check whether the local authorization configuration is pushed to 9800-CL controller or not	To check whether the local authorization configuration is pushed to 9800-CL controller or not	Passed	
DNACJ235S_AAA_12	Check whether the local authorization configuration is pushed to 9800-80 controller or not	To check whether the local authorization configuration is pushed to 9800-80 controller or not	Passed	
DNACJ235S_AAA_13	Check whether the AAA authorization configuration is pushed to 9800-L controller or not	To check whether the AAA authorization configuration is pushed to 9800-L controller or not	Passed	
DNACJ235S_AAA_14	Check whether the AAA authorization configuration is pushed to 9800-CL controller or not	To check whether the AAA authorization configuration is pushed to 9800-CL controller or not	Passed	

DNACJ235S_AAA_15	Check whether the AAA authorization configuration is pushed to 9800-80 controller or not	To check whether the AAA authorization configuration is pushed to 9800-80 controller or not	Passed	
DNACJ235S_AAA_16	Verify the AAA authorization list configuration changes pushed from DNAC in 9800-L controller CLI	To verify the AAA authorization list configuration changes pushed from DNAC in 9800-L controller CLI	Passed	
DNACJ235S_AAA_17	Verify the AAA authorization list configuration changes pushed from DNAC in 9800-CL controller CLI	To verify the AAA authorization list configuration changes pushed from DNAC in 9800-CL controller CLI	Passed	
DNACJ235S_AAA_18	Verify the AAA authorization list configuration changes pushed from DNAC in 9800-80 controller CLI	To verify the AAA authorization list configuration changes pushed from DNAC in 9800-80 controller CLI	Passed	

Rogue report parity with Prime

Logical ID	Title	Description	Status	Defect ID
DNACJ235S_Rogue_1	Check Rogue report generated	To Check Whether Rogue report generated	Passed	
DNACJ235S_Rogue_2	Check Rogue report generated in JSON format	To Check Whether the rogue report generated in Json file format	Passed	
DNACJ235S_Rogue_3	Check rogue report is generated for last 3 hrs	To Check whether the rogue report generated for last 3 hrs	Passed	
DNACJ235S_Rogue_4	Check rogue report is generated for last 24 hrs	To check whether the rogue report generated for last 24 hrs	Passed	
DNACJ235S_Rogue_5	Check rogue report generated for last 7 days	To check whether the rogue report generated for 7 days	Passed	
DNACJ235S_Rogue_6	Check rogue report generated for last more than 7 days	To check whether the rogue report generated for last more than 7 days	Passed	
DNACJ235S_Rogue_7	Check Allowed access point list created	To check Weather the allowed access point list is created	Passed	
DNACJ235S_Rogue_8	Check Allowed vendor list created	To check Weather the allowed vendor list is created	Passed	
DNACJ235S_Rogue_9	Check Allowed access point list is deleted	To check Weather the allowed access point list is deleted	Failed	CSCwd65023
DNACJ235S_Rogue_10	Check Allowed vendor list deleted	To check Weather the allowed vendor list is deleted	Failed	CSCwd53944
DNACJ235S_Rogue_11	Check Rogue rule is created	To check Weather the Rogue rule is created	Passed	
DNACJ235S_Rogue_12	Check Rogue rule is deleted	To check Weather the Rogue rule is deleted	Passed	

DNACJ235S_Rogue_13	Check Rogue rule profile is created	To check Weather the Rogue rule profile is created	Passed	
DNACJ235S_Rogue_14	Check Rogue rule profile is deleted	To check Weather the Rogue rule profile is deleted	Passed	
DNACJ235S_Rogue_15	Check threat setting summary	To Check threat setting summary all the details are updated correctly	Passed	

Advanced WLAN Parameters Configuration Support for Enterprise and Guest Wireless Networks

Logical ID	Title	Description	Status	Defect ID
DNACJ235S_SCAWP_1	Configure SSID creation with AAA Override-Enterprise level for WPA2 Security	To configure SSID creation with AAA Override-Enterprise level for WPA2 Security	Passed	
DNACJ235S_SCAWP_2	Configure SSID creation with AAA Override-Enterprise level for WPA3 Security	To configure SSID creation with AAA Override-Enterprise level for WPA3 Security	Passed	
DNACJ235S_SCAWP_3	Configure SSID creation with AAA Override-Enterprise level for WPA2+WPA3 Security	To configure SSID creation with AAA Override-Enterprise level for WPA2+WPA3 Security	Passed	
DNACJ235S_SCAWP_4	Configure SSID creation with AAA Override -Personal for WPA2 Security	To configure SSID creation with AAA Override -Personal for WPA3 Security	Passed	
DNACJ235S_SCAWP_5	Configure SSID creation with AAA Override -Personal for WPA3 Security	To configure SSID creation with AAA Override- Personal for WPA2 Security	Passed	
DNACJ235S_SCAWP_6	Configure SSID creation with AAA Override -Personal for WPA2+WPA3 Security	To configure SSID creation with AAA Override -Personal for WPA2+WPA3 Security	Passed	
DNACJ235S_SCAWP_7	Configure MPSK -SSID creation with Personal for WPA2 Security	To configure MPSK -SSID creation with Personal for WPA2 Security	Passed	
DNACJ235S_SCAWP_8	Configure SSID creation with AAA Override for Open Secured Security	To configure SSID creation with AAA Override for Open Secured Security	Passed	

DNACJ235S_SCAWP_9	Configure SSID creation with AAA Override for Open Security	To configure SSID creation with AAA Override for Open Security	Passed	
DNACJ235S_SCAWP_10	Enable the PMF for SSID Creation - Enterprise level security	To enable the PMF for SSID Creation for Enterprise level security	Passed	
DNACJ235S_SCAWP_11	Enable the PMF for SSID Creation Personal level security	To enable the PMF for SSID Creation for Personal level security	Passed	
DNACJ235S_SCAWP_12	Enable/Disable the CHD for SSID Creation - Enterprise level security	To enable/disable the CHD for SSID Creation for Enterprise level security	Passed	
DNACJ235S_SCAWP_13	Enable/Disable the CHD for SSID Creation -Personal level security	To enable/disable the CHD for SSID Creation for Personal level security	Passed	
DNACJ235S_SCAWP_14	Connect Windows Client and verify Advanced wan parameters	Connect Windows Client and verify Advanced wan parameters	Passed	
DNACJ235S_SCAWP_15	Connect Android Client and verify Advanced wlan parameters	Connect Android Client and verify Advanced wlan parameters	Passed	
DNACJ235S_SCAWP_16	Connect MAC Client and verify Advanced wlan parameters	Connect MAC Client and verify Advanced wlan parameters	Passed	
DNACJ235S_SCAWP_17	Connect IOS Client and verify Advanced wlan parameters	Connect IOS Client and verify Advanced wlan parameters	Passed	

Support Custom AP Join Profile configurations including SSH, username credentials update from DNAC

Logical ID	Title	Description	Status	Defect ID
DNACJ235S_SCAPC_1	check whether AP profile is able to create with IOS-XE	To check whether AP profile is able to create with IOS-XE	Passed	CSCwd67955
DNACJ235S_SCAPC_2	check whether AP profile with IOS-XE is enabling one feature (enabling OEAP shouldn't allow security, mesh and power)	To check whether AP profile with IOS-XE is enabling one feature (enabling OEAP shouldn't allow security, mesh and power)	Passed	
DNACJ235S_SCAPC_3	Check whether AP Profile with IOS-XE is able to configure country code & Time Zone and Client Limit	To Check whether AP Profile with IOS-XE is able to configure country code & Time Zone and Client Limit	Passed	
DNACJ235S_SCAPC_4	check whether AP Profile with IOS-XE with No-Auth authentication	To check whether AP Profile with IOS-XE with EAP-TLS authentication	Passed	
DNACJ235S_SCAPC_5	check whether AP Profile with IOS-XE with EAP-TLS authentication	To check whether AP Profile with IOS-XE with EAP-TLS authentication	Passed	CSCwd68820
DNACJ235S_SCAPC_6	check whether AP Profile with IOS-XE with EAP-PEAP authentication	To check whether AP Profile with IOS-XE with EAP-PEAP authentication	Passed	
DNACJ235S_SCAPC_7	check whether AP Profile with IOS-XE with EAP-FAST authentication	To check whether AP Profile with IOS-XE with EAP-FAST authentication	Passed	

DNACJ235S_SCAPC_8	check whether AP profile with IOS-XE able to configure the mesh and power profile	To check whether AP profile with IOS-XE able to configure the mesh and power profile	Passed	
DNACJ235S_SCAPC_9	Check whether AP profile with IOS-XE is able to map the network profile.	To Check whether AP profile with IOS-XE is able to map the network profile.	Passed	
DNACJ235S_SCAPC_10	check whether the eWLC device able to provision	To check whether the eWLC device able to provision	Passed	
DNACJ235S_SCAPC_11	check eWLC device whether AP Join Profile, site tag ,power profile & calendar profile created	To check eWLC device whether AP Join Profile, site tag ,power profile & calendar profile created	Passed	
DNACJ235S_SCAPC_12	check whether AP profile is able to create with Aire-OS	To check whether AP profile is able to create with Aire-OS	Passed	
DNACJ235S_SCAPC_13	check whether AP profile with Aire-OS is enabling one feature (enabling OEAP shouldn't allow security, mesh)	To Check AP profile with Aire-OS configurations SSH & telnet	Passed	
DNACJ235S_SCAPC_14	check whether AP profile able to configure Security and mesh	To check whether AP profile able to configure Security and mesh	Passed	
DNACJ235S_SCAPC_15	Check whether AP profile with Aire-OS is able to map the network profile.	To Check whether AP profile with Aire-OS is able to map the network profile.	Passed	
DNACJ235S_SCAPC_16	check whether the eWLC device able to provision	To check whether the eWLC device able to provision	Passed	
DNACJ235S_SCAPC_17	Check eWLC device whether Custom AP Group and mesh profile are created or not	To Check eWLC device whether Custom AP Group and mesh profile are created or not	Passed	

Client Rate Limit Configuration Support for Enterprise and Guest Wireless Networks

Logical ID	Title	Description	Status	Defect ID
DNACJ235S_CRLimit_1	Configure network profile and provision controller with Client rate limit as min Value	Verify profile is able to create with minimum client rate limit or not	Failed	CSCwd80463
DNACJ235S_CRLimit_2	Configure network profile and provision controller with Client rate limit as max Value	Verify profile is able to create with maximum client rate limit or not	Passed	
DNACJ235S_CRLimit_3	Configure network profile with invalid client rate limit	Verify profile is able to create with invalid client rate limit or not	Passed	
DNACJ235S_CRLimit_4	Check network profile is configured only with 500 bits difference	Verify we can modify client rate limit w.r.t. 500 bits difference only or not	Passed	
DNACJ235S_CRLimit_5	Check network profile is configured and provisioned to 9800-L controller with max value "6700000000"	Verify configured network profile with max client rate limit "6700000000" via able to provision to 9800-L controller or not	Passed	
DNACJ235S_CRLimit_6	Check network profile is configured and provisioned to 9800-80 controller with max value "6700000000"	Verify configured network profile with max client rate limit "6700000000" via able to provision to 9800-80 controller to not	Passed	

DNACJ235S_CRLimit_7	Check network profile is configured and provisioned to 9800-CL controller with max value "67000000000"	Verify configured network profile with max client rate limit "67000000000" via able to provision to 9800-CL controller or not	Passed	
DNACJ235S_CRLimit_8	Check network profile is configured and provisioned to 9800-CL controller with max value "10000000000"	Verify configured network profile with max client rate limit "10000000000" via able to provision to 9800-CL controller or not	Passed	
DNACJ235S_CRLimit_9	Connect android client to provisioned profile and verify client rate limits applicable or not	Verify android client is able to connect or not to the profile provisioned with client rate limits	Passed	
DNACJ235S_CRLimit_10	Connect windows client to provisioned profile and verify rate limits applicable or not	Verify windows client is able to connect or not to the profile provisioned with client rate limits	Passed	
DNACJ235S_CRLimit_11	Connect surface client to provisioned profile and verify client rate limits applicable or not	Verify surface client is able to connect or not to the profile provisioned with client rate limits	Passed	
DNACJ235S_CRLimit_12	Connect MAC client to provisioned profile and verify client rate limits applicable or not	Verify MAC client is able to connect or not to the profile provisioned with client rate limits	Passed	
DNACJ235S_CRLimit_13	Configure inherited site and try to provision to controller	Verify inherited site changes are applied to controller or not after provisioning	Passed	

DNACJ235S_CRLimit_14	Configure network profile with client rate limit value and provision to HA setup controller	Verify provisioned network profile is deployed to secondary controller or not	Passed	
DNACJ235S_CRLimit_15	Generate the report for Schedule is Run Now and check the details of the report	To check the report generated for Schedule is Run Now and check details of the report	Passed	
DNACJ235S_CRLimit_16	Generate the report for Schedule is Run Later(one-time) and check the details of the report	To check the report generated for Schedule is Run Later(one-time) and check details of the report	Passed	
DNACJ235S_CRLimit_17	Generate the report for Schedule is Run Recurring and check the details of the report	To check the report generated for Schedule is Run Recurring and check details of the report	Passed	
DNACJ235S_CRLimit_18	Generate the report with email notification and check the details of the report	To check the report with email notification and check details of the report	Passed	
DNACJ235S_CRLimit_19	Generate the report with webhook notification and check the details of the report	To check the report with webhook notification and check details of the report	Passed	
DNACJ235S_CRLimit_20	Generate the report with all radio bands and Schedule is Run Now check the details of the report	To check the report with all radio bands and Schedule is Run Now and check details of the report	Passed	
DNACJ235S_CRLimit_21	Generate the report with all radio bands and Scope is Global check the details of the report	To check the report with all radio bands and Scope is Global is Run Now and check details of the report	Passed	

Wireless Flexible Reports - Phase 1

Logical ID	Title	Description	Status	Defect ID
DNACJ235S_WFRP_1	Generate report for flexible ap distribution	Verify ap details in generated flexible distribution report	Passed	CSCwe16764
DNACJ235S_WFRP_2	Generate report for flexible ap summary	Verify ap details in generated flexible summary report	Passed	
DNACJ235S_WFRP_3	Generate report for flexible ap Trend	Verify ap details in generated flexible trend report	Passed	
DNACJ235S_WFRP_4	Generate report for flexible ap Top N	Verify ap details in generated flexible Top N report	Passed	
DNACJ235S_WFRP_5	Generate report for flexible client distribution	Verify client details in generated flexible distribution report	Passed	
DNACJ235S_WFRP_6	Generate report for flexible client summary	Verify client details in generated flexible summary report	Passed	
DNACJ235S_WFRP_7	Generate report for flexible client Trend	Verify client details in generated flexible trend report	Passed	
DNACJ235S_WFRP_8	Generate report for flexible client Top N	Verify client details in generated flexible Top N report	Passed	
DNACJ235S_WFRP_9	Generate report for flexible Network device distribution	Verify Network device details in generated flexible distribution report	Passed	
DNACJ235S_WFRP_10	Generate report for flexible Network device summary	Verify Network device details in generated flexible summary report	Passed	
DNACJ235S_WFRP_11	Generate report for flexible Network device Trend	Verify Network device details in generated flexible trend report	Passed	
DNACJ235S_WFRP_12	Generate report for flexible Network device Top N	Verify Network device details in generated flexible Top N report	Passed	

DNACJ235S_WFRP_13	Generate flexible distribution,trend,Top N,summmary report for 9120 ap	Verify 9120 ap details in generated report.	Passed	
DNACJ235S_WFRP_14	Generate flexible distribution,trend,Top N,summmary report for 9130 ap	Verify 9130 ap details in generated report.	Passed	
DNACJ235S_WFRP_15	Generate flexible distribution,trend,Top N,summmary report for 9115 ap	Verify 9115 ap details in generated report.	Passed	
DNACJ235S_WFRP_16	Generate flexible distribution,trend,Top N,summmary report for 9105 ap	Verify 9105 ap details in generated report.	Passed	
DNACJ235S_WFRP_17	Generate flexible distribution,trend,Top N,summmary report for windows client	Verify windows client details in generated report.	Passed	
DNACJ235S_WFRP_18	Generate flexible distribution,trend,Top N,summmary report for android client	Verify android client details in generated report.	Passed	
DNACJ235S_WFRP_19	Generate flexible distribution,trend,Top N,summmary report for MAC client	Verify MAC client details in generated report.	Passed	
DNACJ235S_WFRP_20	Generate flexible distribution,trend,Top N,summmary report for Ms surface client.	Verify surface client details in generated report.	Passed	

Accessibility: Menu Navigation and Search Navigation

Logical ID	Title	Description	Status	Defect ID
DNACJ235S_MNSN_01	Navigate DNAC with Network devices, clients, access points.	To navigate DNAC with Network devices, clients, access points.	Passed	
DNACJ235S_MNSN_02	Search & Join Network devices to DNAC	To search & join Network devices to DNAC	Passed	
DNACJ235S_MNSN_03	Navigating the Telemetry page to verify design compliance	To check the design compliance of the Wireless in network setting	Passed	
DNACJ235S_MNSN_04	Navigating to the IP Address Pools to verify design compliance	To check the design compliance of the IP Address Pools in network setting	Passed	
DNACJ235S_MNSN_05	Configure workflow and verify back/next buttons behaviour	Verify Back/Next buttons behave as expected in the 6 GHz config page	Passed	
DNACJ235S_MNSN_06	To navigate & Check the Health Score of the controller	Check the Health Score of the controller	Passed	
DNACJ235S_MNSN_07	Verify configuration preview details while assigning 'Searching 'site	To verify configuration preview details while assigning site	Passed	
DNACJ235S_MNSN_08	Configure Client-Edit dashboard in DNAC	To Edit dashboard in Client page and make modifications in DNAC	Passed	
DNACJ235S_MNSN_09	Navigate the Export Clients data in DNAC page	To export Clients data in DNAC while we can navigate	Passed	
DNACJ235S_MNSN_10	Verify AP MAC address in Topology view	To verify AP MAC address in Topology view	Passed	

DNACJ235S_ MNSN_11	Navigate the Ap location and MAC address on the AP Page	To navigate the Ap location and MAC address on the AP Page	Passed	
DNACJ235S_ MNSN_12	Searching the full screen option of Maps	To search the full screen option of Maps in 360 degree view	Passed	
DNACJ235S_ MNSN_13	Validate & Navigate the details in generated report	To validate details in generated report Correctly or not	Passed	
DNACJ235S_ MNSN_14	Navigate DNAC dashboard can be edited and customized	To check if the dashboard can be edited and customized	Passed	
DNACJ235S_ MNSN_15	Search network devices based on device type and health in DNAC page	To search network devices based on device type and health	Passed	

Support for AP Power Profiles

Logical ID	Title	Description	Status	Defect ID
DNACJ235S_SPPD_1	creating power profile for ap	to check whether power profile created or not	Passed	
DNACJ235S_SPPD_2	creating calendar profile	to check whether calendar profile created or not	Passed	
DNACJ235S_SPPD_3	checking whether power profile in ewlc or not	to check whether power profile created or not in ewlc	Passed	
DNACJ235S_SPPD_4	create power profile rule with radio	to check whether power profile created or not in ewlc	Passed	
DNACJ235S_SPPD_5	create power profile rule with radio 6GHz	to check whether power profile created or not in ewlc	Passed	
DNACJ235S_SPPD_6	create power profile rule with radio 5GHz	to check whether power profile created or not in ewlc	Passed	
DNACJ235S_SPPD_7	create power profile rule with radio 5GHz secondary	to check whether power profile created or not in ewlc	Passed	
DNACJ235S_SPPD_8	create power profile rule with radio 2.4GHz	to check whether power profile created or not in ewlc	Passed	
DNACJ235S_SPPD_9	create power profile rule with radio with parameter spatial stream	to check whether power profile created or not in ewlc	Passed	
DNACJ235S_SPPD_10	create power profile rule with radio with parameter state	to check whether power profile created or not in ewlc	Passed	

DNACJ235S_ SPPD_11	create power profile rule with Ethernet	to check whether power profile created or not in ewlc	Passed	
DNACJ235S_ SPPD_12	create calendar profile with daily	to check whether power profile created or not in ewlc	Passed	
DNACJ235S_ SPPD_13	create calendar profile with weekly	to check whether power profile created or not in ewlc	Passed	
DNACJ235S_ SPPD_14	create calendar profile with monthly	to check whether power profile created or not in ewlc	Passed	
DNACJ235S_ SPPD_15	Checking the mobility configuration between virtual to 9800 controller in DNAC	To check whether the mobility happens between 9800 & Virtual controller	Passed	
DNACJ235S_ SPPD_16	Verifying the mobility configuration with Different Radio types in DNAC	To verify whether Client is Moving between Controllers with Different Radio type or not	Passed	
DNACJ235S_ SPPD_17	Verifying the mobility configuration with same Radio types in DNAC	To verify whether Client is Moving between Controllers with same Radio type or not	Passed	
DNACJ235S_ SPPD_18	Monitoring mobility configuration in DNAC using Android Client	To verify whether the Android client details are showing in DNAC or not	Passed	
DNACJ235S_ SPPD_19	Monitoring mobility configuration in DNAC using iOS Client	To verify whether the iOS client details are showing in DNAC or not	Passed	
DNACJ235S_ SPPD_20	Monitoring mobility configuration in DNAC using Windows Client	To verify whether the Windows client details are showing in DNAC or not	Passed	

DNACJ235S_ SPPD_21	Monitoring mobility configuration in DNAC using MAC Client	To verify whether the MAC client details are showing in DNAC or not	Passed	
DNACJ235S_ SPPD_22	Add/update/delete mobility peer configuration in DNAC	To check whether the mobility Peer configurations are add/Update/delete in DNAC	Passed	

Client-360 Dashboard Enhancements

Logical ID	Title	Description	Status	Defect ID
DNACJ235S_C360AE_1	Adding different network devices in DNAC	To add network devices like switches, Controllers to DNAC and check if the network devices gets added to DNAC or not	Passed	CSCwd50570
DNACJ235S_C360AE_2	Connecting a Windows endpoint to a WLAN and check the client health	To connect a Window endpoint to the wlan created and check if the clients health is shown in the wireless client summary	Passed	
DNACJ235S_C360AE_3	Check client onboarding failure reasons and with more data on events, impact analysis, etc	To check client onboarding failure reasons and with more data on events, impact analysis, etc	Passed	
DNACJ235S_C360AE_4	Check impact analysis data of failed client association	To check impact analysis data of failed client association	Passed	
DNACJ235S_C360AE_5	Check event viewer data of failed client association with site selection	To check event viewer data of failed client association with site selection	Passed	
DNACJ235S_C360AE_6	Connecting a Android endpoint to a WLAN and check the client health	To connect a Android endpoint to the wlan created and check if the clients health is shown in the wireless client summary	Passed	CSCwd54057

DNACJ235S_C360AE_7	Connecting a IOS endpoint to a WLAN and check the client health	To connect a IOS endpoint to the wlan created and check if the clients health is shown in the wireless client summary	Passed	
DNACJ235S_C360AE_8	Connecting a Surface Go endpoint to a WLAN and check the client health	To connect a Surface Go endpoint to the wlan created and check if the clients health is shown in the wireless client summary	Failed	CSCwd50009
DNACJ235S_C360AE_9	Connecting a iPhone endpoint to a WLAN and check the client health	To connect a iPhone endpoint to the wlan created and check if the clients health is shown in the wireless client summary	Passed	
DNACJ235S_C360AE_10	Connecting a MAC OS endpoint to a WLAN and check the client health	To connect a MAC OS endpoint to the wlan created and check if the clients health is shown in the wireless client summary	Passed	
DNACJ235S_C360AE_11	Setting the timeline chart for various endpoints	To set the time line chart for various endpoints	Passed	
DNACJ235S_C360AE_12	Checking the client onboarding time for various end points	To check the client onboarding time for various endpoints	Passed	
DNACJ235S_C360AE_13	Verifying the Device info ,Connectivity & RF Details for various clients	To verify the device info, connectivity & Rf details for various clients	Passed	
DNACJ235S_C360AE_14	Checking the deleted client details in DNAC	To check the deleted client details in DNAC	Passed	

DNACJ235S_C360AE_15	Validating the RSSI & SNR values for various end point	To Validate the RSSI & SNR values for various end points	Passed	
DNACJ235S_C360AE_16	Check the client roaming times in client health dashboard in Assurance page	To check the client roaming times in client health page and check if the details show are correct.	Passed	

Support scheduling of SSID broadcasting

Logical ID	Title	Description	Status	Defect ID
DNACJ235S_SS_1	Create a SSID Scheduler profile with Enable SSID scheduler function in DNAC	To Create a SSID Scheduler profile with Enable SSID scheduler function in DNAC	Passed	CSCwd50617
DNACJ235S_SS_2	Create a SSID Scheduler profile with Client Deny scheduler function in DNAC	To Create a SSID Scheduler profile with Client Deny scheduler function in DNAC	Passed	
DNACJ235S_SS_3	Create a SSID Scheduler profile with Client Deny/Enable SSID scheduler function and Daily Scheduler type in DNAC	To create a SSID Scheduler profile with Client Deny/Enable SSID scheduler function and Daily Scheduler type in DNAC	Passed	
DNACJ235S_SS_4	Create a SSID Scheduler profile with Client Deny/Enable SSID scheduler function and Weekly Scheduler type in DNAC	To create a SSID Scheduler profile with Client Deny/Enable SSID scheduler function and Weekly Scheduler type in DNAC	Passed	
DNACJ235S_SS_5	Create a SSID Scheduler profile with Client Deny/Enable SSID scheduler function and monthly Scheduler type in DNAC	To create a SSID Scheduler profile with Client Deny/Enable SSID scheduler function and monthly Scheduler type in DNAC	Passed	
DNACJ235S_SS_6	Create a SSID and map with the created SSID Profile	To create a SSID and map with the created SSID Profile	Passed	CSCwd49991

DNACJ235S_SS_7	Create a SSID with daily scheduler and provision with 9800-L controller and check whether the configuration reflected in 9800-L controller	To create a SSID with daily scheduler and provision with 9800-L controller and check whether the configuration reflected in 9800-L controller	Passed	
DNACJ235S_SS_8	Create a SSID with daily scheduler and provision with 9800-CL controller and check whether the configuration reflected in 9800-CL controller	To create a SSID with daily scheduler and provision with 9800-CL controller and check whether the configuration reflected in 9800-CL controller	Passed	
DNACJ235S_SS_9	Create a SSID with daily scheduler and provision with 9800-80 controller and check whether the configuration reflected in 9800-80 controller	To create a SSID with daily scheduler and provision with 9800-80 controller and check whether the configuration reflected in 9800-80 controller	Passed	
DNACJ235S_SS_10	Create a SSID with weekly scheduler and provision with 9800-L controller and check whether the configuration reflected in 9800-L controller	To create a SSID with weekly scheduler and provision with 9800-L controller and check whether the configuration reflected in 9800-L controller	Passed	
DNACJ235S_SS_11	Create a SSID with weekly scheduler and provision with 9800-CL controller and check whether the configuration reflected in 9800-CL controller	To create a SSID with weekly scheduler and provision with 9800-CL controller and check whether the configuration reflected in 9800-CL controller	Passed	

DNACJ235S_SS_12	Create a SSID with weekly scheduler and provision with 9800-80 controller and check whether the configuration reflected in 9800-80 controller	To create a SSID with weekly scheduler and provision with 9800-80 controller and check whether the configuration reflected in 9800-80 controller	Passed	
DNACJ235S_SS_13	Create a SSID with monthly scheduler and provision with 9800-L controller and check whether the configuration reflected in 9800-L controller	To create a SSID with monthly scheduler and provision with 9800-L controller and check whether the configuration reflected in 9800-L controller	Passed	
DNACJ235S_SS_14	Create a SSID with monthly scheduler and provision with 9800-CL controller and check whether the configuration reflected in 9800-CL controller	To create a SSID with monthly scheduler and provision with 9800-CL controller and check whether the configuration reflected in 9800-CL controller	Passed	
DNACJ235S_SS_15	Create a SSID with monthly scheduler and provision with 9800-80 controller and check whether the configuration reflected in 9800-80 controller	To create a SSID with monthly scheduler and provision with 9800-80 controller and check whether the configuration reflected in 9800-80 controller	Passed	
DNACJ235S_SS_16	Create a SSID with daily scheduler and provision with 9800-L/CL/80 controller and check for client connectivity	To create a SSID with daily scheduler and provision with 9800-L/CL/80 controller and check for client connectivity	Passed	

DNACJ235S_SS_17	Create a SSID with weekly scheduler and provision with 9800-L/CL/80 controller and check for client connectivity	To create a SSID with weekly scheduler and provision with 9800-L/CL/80 controller and check for client connectivity	Passed	
DNACJ235S_SS_18	Create a SSID with monthly scheduler and provision with 9800-L/CL/80 controller and check for client connectivity	To create a SSID with monthly scheduler and provision with 9800-L/CL/80 controller and check for client connectivity	Passed	
DNACJ235S_SS_19	Create a SSID with Enable SSID function and check whether the SSID is broadcasted at selected time period	To create a SSID with Enable SSID function and check whether the SSID is broadcasted at selected time period	Passed	
DNACJ235S_SS_20	Create a SSID with Client deny function and check whether client not able to join the ssid at selected time period	To create a SSID with Client deny function and check whether client not able to join the ssid at selected time period	Passed	
DNACJ235S_SS_21	Check whether the SSID scheduler from dnac is working fine in 9105 AP	To check whether the SSID scheduler from dnac is working fine in 9105 AP	Passed	
DNACJ235S_SS_22	Check whether the SSID scheduler from dnac is working fine in 9115 AP	To check whether the SSID scheduler from dnac is working fine in 9115 AP	Passed	
DNACJ235S_SS_23	Check whether the SSID scheduler from dnac is working fine in 9120 AP	To check whether the SSID scheduler from dnac is working fine in 9120 AP	Passed	

DNACJ235S_SS_24	Check whether the SSID scheduler from dnac is working fine in 9130 AP	To check whether the SSID scheduler from dnac is working fine in 9130 AP	Passed	
DNACJ235S_SS_25	Check the SSID scheduler with open security ssid	To check the SSID scheduler with open security ssid	Passed	
DNACJ235S_SS_26	Check the SSID scheduler with WPA2-PSK security ssid	To check the SSID scheduler with WPA2-PSK security ssid	Passed	
DNACJ235S_SS_27	Check the SSID scheduler with WPA3-PSK security ssid	To check the SSID scheduler with WPA3-PSK security ssid	Passed	
DNACJ235S_SS_28	Check the SSID scheduler with WPA2-802.1x security ssid	To check the SSID scheduler with WPA2-802.1x security ssid	Passed	
DNACJ235S_SS_29	Check the SSID scheduler with WPA3-802.1x security ssid	To check the SSID scheduler with WPA3-802.1x security ssid	Passed	
DNACJ235S_SS_30	Check the SSID Scheduler with Windows client	To check the SSID Scheduler with Windows client	Passed	
DNACJ235S_SS_31	Check the SSID Scheduler with MAC client	To check the SSID Scheduler with MAC client	Passed	
DNACJ235S_SS_32	Check the SSID Scheduler with Android client	To check the SSID Scheduler with Android client	Passed	
DNACJ235S_SS_33	Check the SSID Scheduler with Surface client	To check the SSID Scheduler with Surface client	Passed	

Open RRM Phase 2 - RF Simulator

Logical ID	Title	Description	Status	Defect ID
DNACJ235S_Openrrm_1	Configure Open RRM and enable connectivity to Kairos cloud	To configure Open RRM and enable connectivity to Kairos cloud	Passed	
DNACJ235S_Openrrm_2	Configure Open RRM and test for 5ghz band	To configure Open RRM and for 5ghz band	Passed	
DNACJ235S_Openrrm_3	Configure Open RRM and test for 2.4ghz band	To configure Open RRM and test for 2.4ghz band	Passed	
DNACJ235S_Openrrm_4	Configure Open RRM with WPA3 security	To configure Open RRM with WPA3 security	Passed	
DNACJ235S_Openrrm_5	Configure Open RRM with WPA2 security	To configure Open RRM with WPA2 security	Passed	
DNACJ235S_Openrrm_6	Configure Open RRM and test with android client	To configure Open RRM and test with android client	Passed	
DNACJ235S_Openrrm_7	Configure Open RRM and test with iPhone client	To configure Open RRM and test with iPhone client	Passed	
DNACJ235S_Openrrm_8	Configure Open RRM and test with MAC client	To configure Open RRM and test with MAC client	Passed	
DNACJ235S_Openrrm_9	Configure Open RRM and test with Surface client	To configure Open RRM and test with Surface client	Passed	
DNACJ235S_Openrrm_10	Configure Open RRM and test with Windows client	To configure Open RRM and test with Windows client	Passed	
DNACJ235S_Openrrm_11	Configure Open RRM and test with only FRA enabled	To configure Open RRM and test with only FRA enabled	Passed	
DNACJ235S_Openrrm_12	Configure Open RRM and test with only DCA enabled	To configure Open RRM and test with only DCA enabled	Passed	

DNACJ235S_Openmm_13	Configure Open RRM and test with only TPC enabled	To configure Open RRM and test with only TPC enabled	Passed	
DNACJ235S_Openmm_14	Configure Open RRM and test with only DBS enabled	To configure Open RRM and test with only DBS enabled	Passed	
DNACJ235S_Openmm_15	Configure Open RRM and test with different RF algorithm combinations	To configure Open RRM and test with different RF algorithm combinations	Passed	
DNACJ235S_Openmm_16	Configure Open RRM and test with manually assigned channel bandwidth and channel no's	To configure Open RRM and test with manually assigned channel bandwidth and channel no's	Passed	
DNACJ235S_Openmm_17	Configure Open RRM and test with 9115, 9120, 9130 AP	To configure Open RRM and test with 9115, 9120, 9130 AP	Passed	
DNACJ235S_Openmm_18	Configure Open RRM and test with 4800 AP	To configure Open RRM and test with 4800 AP	Passed	
DNACJ235S_Openmm_19	Configure Open RRM and test with eWLC HA	To configure Open RRM and test with eWLC HA	Passed	
DNACJ235S_Openmm_20	Configure Open RRM and test with EWC	To configure Open RRM and test with EWC	Passed	



Regression Features

- Overall and Network Health Dashboard, on page 59
- Health Analytics, on page 63
- Network Device, on page 65
- Endpoints 360, on page 67
- Support for next set of AP configurations from DNAC, on page 69
- Support recurrent configuration of AP and radio parameters, on page 72
- AP Usage and Client Breakdown Report, on page 78
- Assurance workflow changes to support AP Refresh, on page 81
- Smart Licencing, on page 82
- All Data Report - Inventory and SWIM, on page 84
- 3D Maps Enhancements Phase 2, on page 86
- Worst Interferer, on page 89
- Called Station ID, on page 91
- Swim Enhancement, on page 94
- Site 360/Dashboard Landing Page, on page 96
- Managing WLC HA SSO via DNAC - Enhancements, on page 98
- Network Insights 2-Radio Insights based on Client Experience, on page 99
- Inventory: Support for Maintenance mode, on page 101
- AP Reboot for Troubleshooting, on page 104
- Support for recurring discovery, on page 106
- Support configuration of advanced WLAN parameters, on page 108
- DNA Dashboard for Open RRM , on page 111
- Unique clients and users summary, on page 113
- Rolling AP Upgrade, on page 115
- Busiest AP, on page 117
- Busiest Client Report, on page 119
- Show Rogue client location in the threat 360 , on page 121
- RRM - Support for General Parameters , on page 123
- Troubleshoot Certification 2 - WLC Unmonitored, on page 125
- Support for Custom Policy Tag for C9800, on page 128
- Ability to manage multiple AP groups /Policy tags, on page 131
- Support AP refresh across different WLCs, on page 132
- Enhancements on AP config flow, on page 133

- Channel Change Report, on page 136
- Enhancements for mobility peer configuration, on page 139
- Support phase-2 Mesh configurations on wireless LAN controllers, on page 142
- Enable Multiple Anchor WLCs configuration for SSID, on page 146
- Support for manually disabling clients on wireless controller, on page 148
- Top N Site - SLA Dashboard - Client KPIs, on page 149
- Support tri radio configuration on Access Points, on page 152
- Support for CCKM configuration on SSID, on page 155
- Client Global Events viewer, on page 159
- Troubleshooting tab on AP-360, on page 161
- Channel Utilization Breakout, on page 164
- Issues correlation[AP-down issue], on page 166
- Support custom WLAN profile configuration from DNAC, on page 168
- Client Detail Report Enhancements - Device Analytics Insights, on page 172
- Config Wireless, on page 174

Overall and Network Health Dashboard

Logical ID	Title	Description	Status	Defect ID
DNACJ235S_Reg_01	Adding network devices in DNAC	To add network devices like switches, Controllers to DNAC and check if the network devices gets added to DNAC or not	Passed	
DNACJ235S_Reg_02	Check if the added device is shown in the overall health dashboard	To check if the Network device added in DNAC is shown in the overall health dashboard	Passed	
DNACJ235S_Reg_03	Connecting a Windows clients to a WLAN and check if the client health ,Active clients detail is shown in the wireless Clients dashlet	To connect a Window clients to the wlan created and check if the clients health is shown in the wireless client summary	Passed	
DNACJ235S_Reg_04	Connecting a Android clients to a WLAN and check if the client health ,Active clients detail is shown in the wireless Clients dashlet	To connect a Android clients to the wlan created and check if the clients health is shown in the wireless client summary	Passed	
DNACJ235S_Reg_05	Connecting a IOS clients to a WLAN and check if the client health ,Active clients detail is shown in the wireless Clients dashlet	To connect a IOS clients to the wlan created and check if the clients health is shown in the wireless client summary	Passed	

DNACJ235S_Reg_06	Connecting a MAC OS clients to a WLAN and check if the client health ,Active clients detail is shown in the wireless Clients dashlet	To connect a MAC OS clients to the wlan created and check if the clients health is shown in the wireless client summary	Passed	
DNACJ235S_Reg_07	Connecting a clients to a WLAN with WPA + WPA2 Security and check if the client health ,Active clients detail is shown in the wireless Clients dashlet	To connect a clients to the wlan with WPA + WPA2 security and check if the clients health is shown in the wireless client summary	Passed	
DNACJ235S_Reg_08	Connecting a clients to a WLAN with WPA2 + WPA3 Security and check if the client health ,Active clients detail is shown in the wireless Clients dashlet	To connect a clients to the wlan with WPA + WPA2 security and check if the clients health is shown in the wireless client summary	Passed	
DNACJ235S_Reg_09	Connecting a clients to a WLAN with Static WEP Security and check if the client health ,Active clients detail is shown in the wireless Clients dashlet	To connect a clients to the wlan with Static WEP security and check if the clients health is shown in the wireless client summary	Passed	
DNACJ235S_Reg_10	Connecting a Wired client to a RLAN and check if the client health is shown in the wired Clients dashlet	To connect a clients to the rlan created and check if the clients health is shown in the wired client summary	Passed	
DNACJ235S_Reg_11	Check the issue shown in the Top 10 issue types	To check if the issue shown in the top 10 issue type dashlet	Passed	

DNACJ235S_Reg_12	Resolving the issue shown and checking the resolved list	To check if the issue shown in the top 10 issue type dashlet are resolved and the resolved issue are show in resolved list or not	Passed	
DNACJ235S_Reg_13	Check if the added network device is shown in the Network Health page	To check if the Network device added in DNAC is shown in the Network health dashboard	Passed	
DNACJ235S_Reg_14	Validating the graphs shown for the network devices	To validate the if the graphs shown in the network health pages are correct	Passed	
DNACJ235S_Reg_15	Checking the total APs count in the network device page in Total AP count dashlet	To check the total APs count in the network health page which is added in eWLC and check if the AP count are shown correctly	Passed	
DNACJ235S_Reg_16	Checking the Top N APs count in the network device page in Assurance page	To check the Top N APs count in the network health page which in added in eWLC and check if the AP count are shown correctly	Passed	
DNACJ235S_Reg_17	Validating the Top N APs by High Interference in network device in Assurance page	To validate the Top N APs by high interference in the network health page which is added in eWLC and check if the AP count are shown correctly	Passed	
DNACJ235S_Reg_18	Making a eWLC down to check if the Dashboard are updated or not	To make the eWLC down and check if the dashboards in network health are updated accordingly	Passed	

DNACJ235S_Reg_19	Deleting the eWLC with AP and the dashboards	To delete the eWLC with multiples AP and check if the dashboards are updated	Passed	
------------------	--	--	--------	--

Health Analytics

Logical ID	Title	Description	Status	Defect ID
DNACJ235S_Reg_20	Health Analytics - RSSI for 9120 AP	To Verify the RSSI values in associating clients which is connected 9120 AP	Passed	
DNACJ235S_Reg_21	Health Analytics - RSSI for 9130 AP	To Verify the RSSI values in associating clients which is connected 9130 AP	Passed	
DNACJ235S_Reg_22	Health Analytics - RSSI for 9115 AP	To Verify the RSSI values in associating clients which is connected 9115 AP	Passed	
DNACJ235S_Reg_23	Health Analytics - RSSI for 9105 AP	To Verify the RSSI values in associating clients which is connected 9105 AP	Passed	
DNACJ235S_Reg_24	Health Analytics - SNR for 9120 AP	To Verify the SNR values in associating clients	Passed	
DNACJ235S_Reg_25	Health Analytics - SNR for 9130 AP	To Verify the SNR values in associating clients	Passed	
DNACJ235S_Reg_26	Health Analytics - SNR for 9115AP	To Verify the SNR values in associating clients	Passed	
DNACJ235S_Reg_27	Health Analytics - SNR for 9105 AP	To Verify the SNR values in associating clients	Passed	
DNACJ235S_Reg_28	Health Analytics -for Inter Roaming	To Verify the Ap's details by the roaming scenario	Passed	
DNACJ235S_Reg_29	Health Analytics -for Intra Roaming	To Verify the Ap's details by the roaming scenario	Passed	
DNACJ235S_Reg_30	Health Analytics -for IRCM Roaming	To Verify the Ap's details by the roaming scenario	Passed	
DNACJ235S_Reg_31	Health Analytics-Client Count by SSID	To verify the details of client based on SSID	Passed	

DNACJ235S_Reg_32	Health Analytics- Windows Onboarding Times	To verify the client onboard details	Passed	
DNACJ235S_Reg_33	Health Analytics- Android Onboarding Times	To verify the client onboard details	Passed	
DNACJ235S_Reg_34	Health Analytics- MAC Onboarding Times	To verify the client onboard details	Passed	
DNACJ235S_Reg_35	Health Analytics - Ap UpDown	To verify the AP's UP or down status	Passed	
DNACJ235S_Reg_36	Health Analytics - Client Count	To verify the client count by Ap's association	Passed	
DNACJ235S_Reg_37	Health Analytics - Device Reachability	To verify the Device status of reachable/unreachable state	Passed	
DNACJ235S_Reg_38	Health Analytics - Ap Interference	To verify the Ap's Interference performance	Passed	
DNACJ235S_Reg_39	Generate the Report for Health Analytics	To verify the details in generated reports.	Passed	

Network Device

Logical ID	Title	Description	Status	Defect ID
DNACJ235S_Reg_40	Verify Network Device dashboard details	To Verify Network Device dashboard details	Passed	
DNACJ235S_Reg_41	Verify if network device details is updated for each device	To verify if network device details is updated for each device	Passed	
DNACJ235S_Reg_42	Verify if AP details is updated for each AP	To verify if AP details is updated for each AP	Passed	
DNACJ235S_Reg_43	Verify if device count is updated with each addition or deletion	To Verify if device count is updated with each addition or deletion	Passed	
DNACJ235S_Reg_44	Verify if different models of network devices are successfully monitored in dashboard	To Verify if different models of network devices are successfully monitored in dashboard	Passed	
DNACJ235S_Reg_45	Verify if different models of AP are successfully monitored in dashboard	To Verify if different models of AP are successfully monitored in dashboard	Passed	
DNACJ235S_Reg_46	Check device statistics over a timeline chart	To check device statistics over a timeline chart	Passed	
DNACJ235S_Reg_47	Check device statistics over different sites	To check device statistics over different sites	Passed	
DNACJ235S_Reg_48	Check device statistics over different domains	To check device statistics over different domains	Passed	
DNACJ235S_Reg_49	Check if the dashboard can be edited and customized	To check if the dashboard can be edited and customized	Passed	

DNACJ235S_Reg_50	Monitor network devices based on device type and health	Monitor network devices based on device type and health	Passed	
DNACJ235S_Reg_51	Verify the AP stats based on different criteria	To verify the AP stats based on different criteria	Passed	
DNACJ235S_Reg_52	Export the device details from network dashboard	To export the device details from network dashboard	Passed	
DNACJ235S_Reg_53	Monitor network device details in Network/Device 360 page	To monitor network device details in Network/Device 360 page	Passed	

Endpoints 360

Logical ID	Title	Description	Status	Defect ID
DNACJ235S_Reg_54	Adding different network devices in DNAC	To add network devices like switches, Controllers to DNAC and check if the network devices gets added to DNAC or not	Passed	
DNACJ235S_Reg_55	Connecting a Windows endpoint to a WLAN and check the client health	To connect a Window endpoint to the wlan created and check if the clients health is shown in the wireless client summary	Passed	
DNACJ235S_Reg_56	Connecting a Android endpoint to a WLAN and check the client health	To connect a Android endpoint to the wlan created and check if the clients health is shown in the wireless client summary	Passed	
DNACJ235S_Reg_57	Connecting a IOS endpoint to a WLAN and check the client health	To connect a IOS endpoint to the wlan created and check if the clients health is shown in the wireless client summary	Passed	CSCwd87000
DNACJ235S_Reg_58	Connecting a Surface Go endpoint to a WLAN and check the client health	To connect a Surface Go endpoint to the wlan created and check if the clients health is shown in the wireless client summary	Passed	

DNACJ235S_Reg_59	Connecting a iPhone endpoint to a WLAN and check the client health	To connect a iPhone endpoint to the wlan created and check if the clients health is shown in the wireless client summary	Passed	
DNACJ235S_Reg_60	Connecting a MAC OS endpoint to a WLAN and check the client health	To connect a MAC OS endpoint to the wlan created and check if the clients health is shown in the wireless client summary	Passed	
DNACJ235S_Reg_61	Setting the timeline chart for various endpoints	To set the time line chart for various endpoints	Passed	
DNACJ235S_Reg_62	Checking the client onboarding time for various end points	To check the client onboarding time for various endpoints	Passed	
DNACJ235S_Reg_63	Verifying the Device info ,Connectivity & RF Details for various clients	To verify the device info, connectivity & Rf details for various clients	Passed	
DNACJ235S_Reg_64	Checking the deleted client details in DNAC	To check the deleted client details in DNAC	Passed	
DNACJ235S_Reg_65	Validating the RSSI & SNR values for various end point	To Validate the RSSI & SNR values for various end points	Passed	
DNACJ235S_Reg_66	Check the client roaming times in client health dashboard in Assurance page	To check the client roaming times in client health page and check if the details show are correct.	Passed	
DNACJ235S_Reg_67	Validating the endpoint details in DNAC cloud	To validate the endpoint details in DNAC cloud	Passed	

Support for next set of AP configurations from DNAC

Logical ID	Title	Description	Status	Defect ID
DNACJ235S_Reg_68	Configure Ap height and validate the ap details	Verify that in AP configuration page AP height should not allow to configure below 3Feet and invalid values	Passed	
DNACJ235S_Reg_69	Verify that in AP configuration page FQDN are not allowed to configure	To Verify that in AP configuration page FQDN are not allowed to configure for primary/secondary/tertiary controller names	Passed	
DNACJ235S_Reg_70	Configure custom primary/secondary/tertiary controller name & IP	Verify that in AP configuration page user can configure custom primary/secondary/tertiary controller name & IP	Passed	
DNACJ235S_Reg_71	Select multiple un-assigned and assigned AP which are joined to same controller	Verify that user can select multiple un-assigned and assigned AP which are joined to same controller at same time for AP configuration	Passed	
DNACJ235S_Reg_72	Check if appropriate error is shown when External antennas are configured	To Check if appropriate error is shown when External antennas are configured on a mix of Internal and External model APs are selected. - DNAC_Guardian_Nonfabric	Passed	
DNACJ235S_Reg_73	Verify that AP configuration with clean Air /SI enable	To Verify that AP configuration with clean Air /SI enable on 5GHZ/2.4GHz behaviour when the AP radios are disabled state	Passed	

DNACJ235S_Reg_74	Verify that there is a CLI preview AP configuration	To Verify that there is a CLI preview AP configuration parameters for user to check all the configured which are going to provision for device	Passed	
DNACJ235S_Reg_75	Moving the AP from one floor to another each with a different heights configured.	To verify moving the AP from one floor to another each with a different heights configured.	Passed	
DNACJ235S_Reg_76	Change AP mode to sniffer in ap configuration page	Verify that in AP configuration page user can change AP mode to sniffer and provision the AP the AP should move to sniffer mode	Passed	
DNACJ235S_Reg_77	Configure HA details and validate ap configuration page	Verify the AP configuration which are configured shows proper when HA failover triggered and AP joins to standby controller	Passed	
DNACJ235S_Reg_78	configuring the LED brightness level	configuring the LED brightness level when the AP LED Flash is enabled on Aps	Passed	
DNACJ235S_Reg_79	Verify that AP configuration through PnP	Verify that AP configuration parameter can up be update to the AP which discovered through PnP	Passed	
DNACJ235S_Reg_80	Delete the configuration with clean up	: Delete-Config clean up : Verify Delete device with config clean-up enable	Failed	CSCwd67628
DNACJ235S_Reg_81	Delete the configuration without clean up	Delete-Config without clean up : Verify Delete device without config clean-up enable	Passed	

DNACJ235S_Reg_82	schedule the AP configuration workflow	schedule-Workflow :Verify with schedule the AP configuration workflow for setting additional parameter and ensure it is scheduled and executed on scheduled time -	Passed	
DNACJ235S_Reg_83	Verify Activity Task details when AP configuration workflow	Summary/task details :Verify Activity Task details when AP configuration workflow Task is completed and failed for valid reason, verify appropriate error is shown	Passed	

Support recurrent configuration of AP and radio parameters

Logical ID	Title	Description	Status	Defect ID
DNACJ235S_Reg_84	Configure AP Workflow - User should be able to view/select 2 cards for Recurring & Non-recurring flows	To configure AP Workflow - User should be able to view/select 2 cards for Recurring & Non-recurring flows	Passed	
DNACJ235S_Reg_85	Configure AP Workflow - User should be able to choose available options on expanding 'AP parameters' on selecting the Recurring flow	To configure AP Workflow - User should be able to choose available options on expanding 'AP parameters' on selecting the Recurring flow	Passed	
DNACJ235S_Reg_86	Configure AP Workflow - User should be able to view both assigned or unassigned APs from the 'Select Sites' page	To configure AP Workflow - User should be able to view both assigned or unassigned APs from the 'Select Sites' page	Passed	
DNACJ235S_Reg_87	Recurrent configuration flow - 'Select AP and Radio params' screen - User should be able to select/unselect all AP and Radio parameters	To recurrent configuration flow - 'Select AP and Radio params' screen - User should be able to select/unselect all AP and Radio parameters	Passed	
DNACJ235S_Reg_88	Recurrent configuration flow - 'Select AP and Radio params' screen -User should be able to enable/disable 'Admin status' for all parameters	To recurrent configuration flow - 'Select AP and Radio params' screen -User should be able to enable/disable 'Admin status' for all parameters	Passed	
DNACJ235S_Reg_89	Recurrent configuration flow - 'Select AP and Radio params' screen - User should be able to enable/disable 'AP LED status' AP parameter	To recurrent configuration flow - 'Select AP and Radio params' screen - User should be able to enable/disable 'AP LED status' AP parameter	Passed	

DNACJ235S_Reg_90	Recurrent configuration flow - 'Schedule Task' screen - Validate scheduling options	To recurrent configuration flow - 'Schedule Task' screen - Validate scheduling options	Passed	
DNACJ235S_Reg_91	Recurrent configuration flow - 'Schedule Task' screen - Validate scheduling options for past time stamp	To recurrent configuration flow - 'Schedule Task' screen - Validate scheduling options for past time stamp	Passed	
DNACJ235S_Reg_92	Recurrent configuration flow - 'Schedule Task' screen - Validate the options available to end the schedule	To recurrent configuration flow - 'Schedule Task' screen - Validate the options available to end the schedule	Passed	
DNACJ235S_Reg_93	Recurrent configuration flow - 'Summary' screen - Validate 'Recurring' mode in summary page content	To recurrent configuration flow - 'Summary' screen - Validate 'Recurring' mode in summary page content	Passed	
DNACJ235S_Reg_94	Recurrent configuration flow - 'Summary' screen - Validate summary page content for recurrence option 'None'	To recurrent configuration flow - 'Summary' screen - Validate summary page content for recurrence option 'None'	Passed	
DNACJ235S_Reg_95	Recurrent configuration flow - 'Summary' screen - Validate all 'Edit' options for each section/page	To recurrent configuration flow - 'Summary' screen - Validate all 'Edit' options for each section/page	Passed	
DNACJ235S_Reg_96	Switch from Recurrent to Non-Recurrent flow - Using the 'Edit' option from Summary page	To switch from Recurrent to Non-Recurrent flow - Using the 'Edit' option from Summary page	Passed	

DNACJ235S_Reg_97	Exit-Resume functionality - User should be able to Exit from any screen of the Recurrent configuration flow and able to resume the task from the Exit point	Exit-Resume functionality - User should be able to Exit from any screen of the Recurrent configuration flow and able to resume the task from the Exit point	Passed	
DNACJ235S_Reg_98	Navigation to previous pages using Milestone option	To navigation to previous pages using Milestone option	Passed	
DNACJ235S_Reg_99	BACK/NEXT button functionality - User should be able to navigate to back/next page from each screen of the workflow	BACK/NEXT button functionality - User should be able to navigate to back/next page from each screen of the workflow	Passed	
DNACJ235S_Reg_100	Validate scheduling functionality for enabling Admin status and AP LED status for recurrence option 'None'	To validate scheduling functionality for enabling Admin status and AP LED status for recurrence option 'None'	Passed	
DNACJ235S_Reg_101	Validate scheduling functionality for disabling Admin status and AP LED status options for recurrence option 'None'	To validate scheduling functionality for disabling Admin status and AP LED status options for recurrence option 'None'	Passed	
DNACJ235S_Reg_102	Validate the AP LED status from inventory page during the scheduled time and after the schedule ends	To validate the AP LED status from inventory page during the scheduled time and after the schedule ends	Passed	
DNACJ235S_Reg_103	Validate scheduling functionality for enabling Admin status and AP LED status for Hourly recurrence	To validate scheduling functionality for enabling Admin status and AP LED status for Hourly recurrence	Passed	

DNACJ235S_Reg_104	Validate scheduling functionality for disabling Admin status and AP LED status for Hourly recurrence	To validate scheduling functionality for disabling Admin status and AP LED status for Hourly recurrence	Passed	
DNACJ235S_Reg_105	Validate scheduling functionality for enabling/disabling Admin status and AP LED status for Daily recurrence	To validate scheduling functionality for enabling/disabling Admin status and AP LED status for Daily recurrence	Passed	
DNACJ235S_Reg_106	Validate scheduling functionality for enabling/disabling Admin status and AP LED status for Weekly recurrence	To validate scheduling functionality for enabling/disabling Admin status and AP LED status for Weekly recurrence	Passed	
DNACJ235S_Reg_107	Validate that the 'Edit recurrence' functionality for the scheduled tasks works from Activities page	To validate that the 'Edit recurrence' functionality for the scheduled tasks works from Activities page	Passed	
DNACJ235S_Reg_108	Validate that the 'Cancel recurrence' functionality for the scheduled tasks works from Activities page	To validate that the 'Cancel recurrence' functionality for the scheduled tasks works from Activities page	Passed	
DNACJ235S_Reg_109	Validate the configuration changes when enabling/disabling params from non-recurrent AP configuration flow	To validate the configuration changes when enabling/disabling params from non-recurrent AP configuration flow	Passed	
DNACJ235S_Reg_110	Verify that the recurrent schedules are not impacted when the AP is provisioned/reprovisioned from the usual provision flow	To verify that the recurrent schedules are not impacted when the AP is provisioned/reprovisioned from the usual provision flow	Passed	

DNACI235S_Reg_111	Verify that the recurrent schedules of one AP can be over-written by a new task with a different recurrent schedule	To verify that the recurrent schedules of one AP can be over-written by a new task with a different recurrent schedule	Passed	
DNACI235S_Reg_112	Validate recurrence scheduling during AP reboot/Mode change (when the AP is in unreachable state)	To validate recurrence scheduling during AP reboot/Mode change (when the AP is in unreachable state)	Passed	
DNACI235S_Reg_113	Verify that the scheduled recurrences are not impacted after an AP reboot/Mode change	To verify that the scheduled recurrences are not impacted after an AP reboot/Mode change	Passed	
DNACI235S_Reg_114	Verify recurrent scheduling in sniffer mode	To verify recurrent scheduling in sniffer mode	Passed	
DNACI235S_Reg_115	Changing the AP LED status from Inventory page should still work even when it is disabled via workflow	By changing the AP LED status from Inventory page should still work even when it is disabled via workflow	Passed	
DNACI235S_Reg_116	Validate recurrent scheduling functionality for different time zones	To validate recurrent scheduling functionality for different time zones	Passed	
DNACI235S_Reg_117	Verify the AP configurations from Inventory page is updated after the recurrent schedules	To verify the AP configurations from Inventory page is updated after the recurrent schedules	Passed	
DNACI235S_Reg_118	Validate recurrent scheduling functionality for enabling/disabling Admin status and AP LED status on EWC setup	To validate recurrent scheduling functionality for enabling/disabling Admin status and AP LED status on EWC setup	Passed	

DNACJ235S_Reg_119	Verify that Assurance AP 360 degree page is updated with the status changes after each recurrent schedules	To verify that Assurance AP 360 degree page is updated with the status changes after each recurrent schedules	Passed	
DNACJ235S_Reg_120	Validate all the recurrence scheduling events are captured in audit logs	To validate all the recurrence scheduling events are captured in audit logs	Failed	CSCwd63543

AP Usage and Client Breakdown Report

Logical ID	Title	Description	Status	Defect ID
DNACJ235S_Reg_121	Configuring DNAC with Network devices, clients, access points.	To configure DNAC with Network devices, clients, access points.	Passed	
DNACJ235S_Reg_122	Report generation using template	To do report generation using template	Passed	
DNACJ235S_Reg_123	Validate details in generated report	To validate details in generated report	Passed	
DNACJ235S_Reg_124	Adding multiple locations during report generation.	To add multiple locations during report generation.	Passed	
DNACJ235S_Reg_125	Verify client details in generated report.	To verify client details in generated report.	Passed	
DNACJ235S_Reg_126	Connect Android client and check if it is shown in the generated report.	To connect Android client and check if it is shown in the generated report.	Passed	
DNACJ235S_Reg_127	Connect iPhone client and check if it is shown in the generated report.	To connect iPhone client and check if it is shown in the generated report.	Passed	
DNACJ235S_Reg_128	Connect MAC client and check if it is shown in the generated report.	To connect MAC client and check if it is shown in the generated report.	Passed	
DNACJ235S_Reg_129	Check details of connected clients to 2.4Ghz & 5Ghz bands.	To check details of connected clients to 2.4Ghz & 5Ghz bands.	Passed	
DNACJ235S_Reg_130	Check device details with bad health in generated report.	To check device details with bad health in generated report.	Passed	
DNACJ235S_Reg_131	Check if device inventory is updated in report with addition of network devices/clients.	To check if device inventory is updated in report with addition of network devices/clients.	Passed	

DNACJ235S_Reg_132	Generate report with different time range values.	To generate report with different time range values.	Passed	
DNACJ235S_Reg_133	Generate report with different custom time range values.	To generate report with different custom time range values.	Passed	
DNACJ235S_Reg_134	Schedule report generation using template	To schedule report generation using template	Passed	
DNACJ235S_Reg_135	Schedule recurring report generation using template	To schedule recurring report generation using template	Passed	
DNACJ235S_Reg_136	Email report option during report generation	To check Email report option during report generation	Passed	
DNACJ235S_Reg_137	Webhook notification during report generation	To check webhook notification during report generation	Passed	
DNACJ235S_Reg_138	Edit config of generated report template	To edit config of generated report template	Passed	
DNACJ235S_Reg_139	Duplicate report option using existing report	To duplicate report option using existing report	Passed	
DNACJ235S_Reg_140	Trigger report generation using Run now option	To trigger report generation using Run now option	Passed	
DNACJ235S_Reg_141	Delete report using delete option under action tab	To delete report using delete option under action tab	Passed	
DNACJ235S_Reg_142	Test report with breakdown by VLAN	To test report with breakdown by VLAN	Passed	
DNACJ235S_Reg_143	Test report with breakdown by SSID	To test report with breakdown by SSID	Passed	
DNACJ235S_Reg_144	Test report with breakdown by Vendor	To test report with breakdown by Vendor	Passed	
DNACJ235S_Reg_145	Test report with breakdown by OS type	To test report with breakdown by OS type	Passed	

DNACJ235S_Reg_146	Test report sort by 'Client Count'	To test report sort by 'Client Count'	Passed	
DNACJ235S_Reg_147	Test report schedule function	To test report schedule function	Passed	
DNACJ235S_Reg_148	Verify report data accuracy with different type of clients	To verify report data accuracy with different type of APs	Passed	

Assurance workflow changes to support AP Refresh

Logical ID	Title	Description	Status	Defect ID
DNACJ235S_Reg_149	Provision network devices in DNAC using Inventory & PNP flow	To provision network devices in DNAC using Inventory & PNP flow	Passed	CSCwd94140
DNACJ235S_Reg_150	Perform AP Refresh flow in DNAC and verify the details	To perform AP Refresh flow in DNAC and verify the details	Passed	
DNACJ235S_Reg_151	Check the report after Ap Refresh process is done	To verify AP details in report after ap replacement	Passed	CSCwd50612
DNACJ235S_Reg_152	AP Refresh process using different model AP(9115 to 9130)	To verify AP Refresh with different AP model	Passed	
DNACJ235S_Reg_153	Verify AP refresh works fine for all model APs	Verify AP refresh works fine for all model APs	Passed	
DNACJ235S_Reg_154	Choosing new AP from same controller for AP refresh	To choose new AP from same controller for AP refresh	Passed	
DNACJ235S_Reg_155	Choosing new AP from different controller for AP refresh	To choose new AP from different controller for AP refresh	Passed	
DNACJ235S_Reg_156	Perform AP refresh process for bulk amount of AP's	To perform AP refresh process for bulk amount of AP's	Passed	

Smart Licencing

Logical ID	Title	Description	Status	Defect ID
DNACJ235S_Reg_157	Configuring Smart account in DNAC via UI	To Configuring Smart account in DNAC via UI and check if the Profile is created or not	Passed	
DNACJ235S_Reg_158	Configuring Smart account in DNAC via UI with wrong credentials.	To Configuring Smart account in DNAC via UI with wrong credentials and verify it giving proper error messages .	Passed	
DNACJ235S_Reg_159	Verify able to fetch the satellite name	To Verify able to fetch the satellite name correctly with out any issues.	Passed	
DNACJ235S_Reg_160	Verify able to show proper error message for smart account adding.	To Verify able to show proper error message for smart account adding.	Passed	
DNACJ235S_Reg_161	Verify SSM Connection Mode :Direct	To Verify SSM Connection Mode :Direct	Passed	
DNACJ235S_Reg_162	Verify SSM Connection Mode: On-Prem CSSM :	To Verify SSM Connection Mode: On-Prem CSSM :	Passed	
DNACJ235S_Reg_163	Verify SSM Connection Mode: proxy	To Verify SSM Connection Mode: proxy:	Passed	
DNACJ235S_Reg_164	Verify SSM Connection Mode :Direct with 9800-40 model controller.	To Verify SSM Connection Mode :Direct with 9800-40 model controller.	Passed	
DNACJ235S_Reg_165	Verify SSM Connection Mode :Direct with 9800-80 model controller.	To Verify SSM Connection Mode :Direct with 9800-80 model controller.	Passed	
DNACJ235S_Reg_166	Verify SSM Connection Mode :Direct with 9800-L model controller.	To Verify SSM Connection Mode :Direct with 9800-L model controller.	Passed	

DNACJ235S_Reg_167	Verify SSM Connection Mode :On-Prime CSSM with 9800-40 model controller.	To Verify SSM Connection Mode :Direct with 9800-40 model controller.	Passed	
DNACJ235S_Reg_168	Verify SSM Connection Mode :On-Prime CSSM with 9800-80 model controller.	To Verify SSM Connection Mode :Direct with 9800-80 model controller.	Passed	
DNACJ235S_Reg_169	Verify SSM Connection Mode :On-Prime CSSM with 9800-L model controller.	To Verify SSM Connection Mode :Direct with 9800-L model controller.	Passed	

All Data Report - Inventory and SWIM

Logical ID	Title	Description	Status	Defect ID
DNACJ235S_Reg_170	Generate the Inventory report as PDF format	To Check the report generated as PDF format or not	Passed	
DNACJ235S_Reg_171	Generate the Inventory report as CSV format	To Check the report generated as CSV format or not	Passed	
DNACJ235S_Reg_172	Generate the Inventory report as TDE format	To Check the report generated as TDE format or not	Passed	
DNACJ235S_Reg_173	Generate the Inventory report with schedule time as now	To Check the report generated in schedule now time	Failed	CSCwe03872
DNACJ235S_Reg_174	Generate the Inventory report with schedule time as Run later	To Check the report generated in schedule later time	Failed	CSCwd56492
DNACJ235S_Reg_175	Generate the Inventory report with schedule time as Run Recurring option	To Check the report generated in schedule recurring time	Passed	
DNACJ235S_Reg_176	Generate the Inventory report with email notification	To Verify the notification generated or not with valid report details	Passed	
DNACJ235S_Reg_177	Generate the Inventory report with webhook notification	To Verify the notification generated or not with valid report details	Passed	
DNACJ235S_Reg_178	Generate the Inventory report after deleted all the devices in DNAC	To validate the report details shown or not after deleted the device in DNAC	Passed	
DNACJ235S_Reg_179	Generate the SWIM report as PDF format	To Check the report generated as PDF format or not	Passed	

DNACJ235S_Reg_180	Generate the SWIM report as CSV format	To Check the report generated as CSV format or not	Passed	
DNACJ235S_Reg_181	Generate the SWIM report as TDE format	To Check the report generated as TDE format or not	Passed	
DNACJ235S_Reg_182	Generate the SWIM report with schedule time as now	To Check the report generated in schedule now time	Passed	
DNACJ235S_Reg_183	Generate the SWIM report with schedule time as Run later	To Check the report generated in schedule later time	Passed	
DNACJ235S_Reg_184	Generate the SWIM report with schedule time as Run Recurring option	To Check the report generated in schedule recurring time	Passed	
DNACJ235S_Reg_185	Generate the SWIM report with email notification	To Verify the notification generated or not with valid report details	Passed	
DNACJ235S_Reg_186	Generate the SWIM report with webhook notification	To Verify the notification generated or not with valid report details	Passed	
DNACJ235S_Reg_187	Generate the SWIM report after deleted all the devices in DNAC	To validate the report details shown or not after deleted the device in DNAC	Passed	
DNACJ235S_Reg_188	Generate the SWIM report without performing SWIM operation	To validate the report details shown or not without performing the SWIM operation	Passed	
DNACJ235S_Reg_189	Create report in English UI and validate the details in Japanese UI	To check details are shown or not in Japanese UI	Passed	

3D Maps Enhancements Phase 2

Logical ID	Title	Description	Status	Defect ID
DNACJ235S_Reg_190	Heatmap must incorporate effect of AP location, TX Power, elevation and azimuth	Verify if changes reflected or not	Passed	
DNACJ235S_Reg_191	User can select multiple APs and see the cumulative coverage of these Aps	Verify if changes reflected or not	Passed	
DNACJ235S_Reg_192	Support multiple radios per AP on the same band	Verify if changes reflected or not	Passed	
DNACJ235S_Reg_193	Heatmap must incorporate antenna propagation pattern	Verify if changes reflected or not	Passed	
DNACJ235S_Reg_194	UI control for channels and channel display	Verify if changes reflected or not	Passed	
DNACJ235S_Reg_195	change the AP type	Verify if we can change the AP type	Passed	
DNACJ235S_Reg_196	Ability to control AP position & height	Verify if we can move the AP position on the 3d Floor map and modify its height as well and as well in 2d mode	Passed	
DNACJ235S_Reg_197	Floor level RF model selection granularity	Verify if we are able to get floor level RF model in case of multi floor building	Passed	
DNACJ235S_Reg_198	Ability to control AP Tx Power level & Channel	Verify if we change the TX power and channel, we can see it on the 3d floor map	Passed	

DNACJ235S_Reg_199	Ability to control external antenna type	Verify if we can select the type of external antenna - omni directional, bi-directional, etc	Failed	CSCwd59348
DNACJ235S_Reg_200	Ability to control the camera in first person mode (fly controls)	Verify if ability is there to get regular FOV and a wide angle FOV	Passed	
DNACJ235S_Reg_201	Clip plane default position must align with building's bounding box	Verify if default position is aligned with buildings bounding box	Passed	
DNACJ235S_Reg_202	Ability to control the camera such that it orbits around a target (orbit controls)	Verify if we can control camera around a target	Passed	
DNACJ235S_Reg_203	Support near/far clip planes in 3 dimensions for point cloud and isosurface visualizations	verify support is available for near/far clip plans in 3D	Passed	
DNACJ235S_Reg_204	Ability to save custom view settings	Verify if we can save customer view settings and retrieve them	Passed	
DNACJ235S_Reg_205	Ability to control the SLA target for Signal Strength (default: TBD) and SNR (default:TBD)	Verify SLA control knob for RSSI & SNR	Passed	
DNACJ235S_Reg_206	Insight on coverage gaps (substantiated by sensor ray visualization)	Verify coverage gaps from Sensor(ray visualization)	Passed	
DNACJ235S_Reg_207	Insights Infra: Ability to hyperlink insight into chase camera view of 3D visualization	Verify hyperlink of insight to chase camera(3D)	Passed	
DNACJ235S_Reg_208	3D floor data can be entered directly into DNAC using the Maps wall/obstacle drawing function	Verify manual 3D floor data can be entered & saved	Passed	

DNACJ235S_Reg_209	3D Rendering of Building Geometry with multi-floor and single floor view support	Verify rendering of building geometry (single,multi)	Passed	
-------------------	--	--	--------	--

Worst Interferer

Logical ID	Title	Description	Status	Defect ID
DNACJ235S_Reg_210	Generate the Worst Interferer report as CSV format	To Check the report generated as CSV format or not	Passed	
DNACJ235S_Reg_211	Generate the Worst Interferer report as JSON format	To Check the report generated as JSON format or not	Passed	
DNACJ235S_Reg_212	Generate the Worst Interferer report as TDE format	To Check the report generated as TDE format or not	Passed	
DNACJ235S_Reg_213	Generate the Worst Interferer report with schedule time as Run now	To Check the report generated in schedule Run now time	Passed	
DNACJ235S_Reg_214	Generate the Worst Interferer report with schedule time as Run later(One-Time)	To Check the report generated in schedule Run Later time	Passed	
DNACJ235S_Reg_215	Generate the Worst Interferer report with schedule time as Run recurring	To Check the report generated in schedule Run recurring time	Passed	
DNACJ235S_Reg_216	Generate the Worst interferer report with email notification	To Verify the notification generated or not with valid report details	Passed	
DNACJ235S_Reg_217	Generate the Worst interferer report with webhook notification	To Verify the notification generated or not with valid report details	Passed	
DNACJ235S_Reg_218	Duplicate report option using existing report	To duplicate report option using existing report	Passed	
DNACJ235S_Reg_219	Delete report using delete option under action tab	To Delete report using delete option under action tab	Passed	

DNACJ235S_Reg_220	Adding multiple locations during report generation.	To add multiple locations during report generation.	Passed	
DNACJ235S_Reg_221	Validate details in generated report	To Validate details in generated report	Passed	
DNACJ235S_Reg_222	Verify Interferer details in generated report.	To Verify Interferer details in generated report.	Passed	
DNACJ235S_Reg_223	Generating interference in APs connected to eWLC and check the report in DNAC	To generate interference in Aps connected to eWLC and check the report in DNAC	Passed	
DNACJ235S_Reg_224	Associate a 9105 AP to eWLC and generating interference report	To associate a 9105 AP to eWLC and generating interference report	Passed	
DNACJ235S_Reg_225	Associate a 9120 AP to eWLC and generating interference report	To associate a 9120 AP to eWLC and generating interference report	Passed	
DNACJ235S_Reg_226	Associate a 9130 AP to eWLC and generating interference report	To associate a 9130 AP to eWLC and generating interference report	Passed	

Called Station ID

Logical ID	Title	Description	Status	Defect ID
DNACJ235S_Reg_227	Configure radius-server wireless attribute call station id for authentication and accounting with "ap-name-ssid"	To Configure radius-server wireless attribute call station id for authentication and accounting with "ap-name-ssid"	Passed	
DNACJ235S_Reg_228	Configure radius-server wireless attribute call station id for authentication and accounting with "ap-ethMAC-ssid"	To Configure radius-server wireless attribute call station id for authentication and accounting with "ap-ethMAC-ssid"	Passed	
DNACJ235S_Reg_229	Configure radius-server wireless attribute call station id for authentication and accounting with "ap-group-name"	To Configure radius-server wireless attribute call station id for authentication and accounting with "ap-group-name"	Passed	
DNACJ235S_Reg_230	Configure radius-server wireless attribute call station id for authentication and accounting with "ap-MACaddress-ssid"	To Configure radius-server wireless attribute call station id for authentication and accounting with "ap-MACaddress-ssid"	Passed	
DNACJ235S_Reg_231	Configure radius-server wireless attribute call station id for authentication and accounting with "ap-MACaddress"	To Configure radius-server wireless attribute call station id for authentication and accounting with "ap-MACaddress"	Passed	
DNACJ235S_Reg_232	Configure radius-server wireless attribute call station id for authentication and accounting with "ap-ethMAC-only"	To Configure radius-server wireless attribute call station id for authentication and accounting with "ap-ethMAC-only"	Passed	

DNACJ235S_Reg_233	Configure radius-server wireless attribute call station id for authentication and accounting with “ap-location”	To Configure radius-server wireless attribute call station id for authentication and accounting with “ap-location”	Passed	
DNACJ235S_Reg_234	Configure radius-server wireless attribute call station id for authentication and accounting with “ap-name-ssid” with different networks	To Configure radius-server wireless attribute call station id for authentication and accounting with “ap-name-ssid” with different networks	Passed	
DNACJ235S_Reg_235	configure different servers for authentication and accounting of attribute	To configure different servers for authentication and accounting of attribute	Passed	
DNACJ235S_Reg_236	configuring both AAA and local authentication	To configuring both AAA and local authentication	Passed	
DNACJ235S_Reg_237	Verify Downgrade and upgrade impacted while configuring called station id for authentication and accounting	To verify Downgrade and upgrade impacted while configuring called station id for authentication and accounting	Passed	
DNACJ235S_Reg_238	Verify HA active to standby config impacts when configuring called station id for authentication and accounting	To verify config impact HA active to standby when configuring called station id for authentication and accounting	Passed	
DNACJ235S_Reg_239	Verify active to standby to active config impact when configuring called station id for authentication and accounting	To verify config impact when active to standby to active when configuring called station id for authentication and accounting	Passed	

DNACJ235S_Reg_240	Verify by changing MAC address format in attribute and check config impact "radius-server attribute 31 MAC format ? "	To Verify the changing of MAC address format in attribute and check config	Passed	
DNACJ235S_Reg_241	Configure radius-server wireless attribute call station id for authentication and accounting with "ap-name-ssid" with MAC filtering configured in AAA	To Configure MAC filtering and verify client connectivity	Passed	
DNACJ235S_Reg_242	Verify Editing changes are applying while configuring radius-server wireless attribute call station id for authentication and accounting with "ap-name "with MAC filtering configured in AAA	To Verify Editing changes are applying while configuring radius-server wireless attribute call station id for authentication and accounting with "ap-name"	Passed	
DNACJ235S_Reg_243	Configure radius-server wireless attribute call station id for authentication and accounting with "ap-name-ssid" with Mobility configuration	Configure radius-server wireless attribute call station id for authentication and accounting with "ap-name-ssid" with Mobility configuration	Passed	

Swim Enhancement

Logical ID	Title	Description	Status	Defect ID
DNACJ235S_Reg_244	Importing a image from a device	To check if the images gets imported from the device or not	Passed	
DNACJ235S_Reg_245	Importing the image through the URL	To import the image using URL and check if the images gets imported or not.	Passed	
DNACJ235S_Reg_246	Import the Invalid image from a device	To import the wrong image using device and check if the images gets imported or not.	Passed	
DNACJ235S_Reg_247	Mark multiple images as golden image	To Mark multiple images as golden image	Passed	
DNACJ235S_Reg_248	Verify Software Distribution for now	To verify Software Distribution for now	Passed	
DNACJ235S_Reg_249	Schedule Software Distribution	To Schedule Software Distribution	Passed	
DNACJ235S_Reg_250	Verify Software Activation After Distribution for Now	To verify Software Activation After Distribution for Now	Passed	
DNACJ235S_Reg_251	Schedule Software Activation After Distribution	To Schedule Software Activation After Distribution	Passed	
DNACJ235S_Reg_252	Verify Distribution is triggered or not	To verify Distribution is triggered or not	Passed	
DNACJ235S_Reg_253	Verify Distribution is triggered or not for multiple devices	To verify Distribution is triggered or not for multiple devices	Passed	
DNACJ235S_Reg_254	Verify Unpack Images status	To verify Unpack Image status	Passed	
DNACJ235S_Reg_255	Verify AP Pre image Download status	To verify AP Pre image Download status	Passed	

DNACJ235S_Reg_256	Verify Distribution and Activation for Now	To verify Distribution and Activation for Now	Passed	
DNACJ235S_Reg_257	Schedule Distribution and Activation	To Schedule Distribution and Activation	Passed	

Site 360/Dashboard Landing Page

Logical ID	Title	Description	Status	Defect ID
DNACJ235S_Reg_258	Adding network devices in DNAC	To add network devices like switches, Controllers to DNAC and check if the network devices gets added to DNAC or not	Passed	
DNACJ235S_Reg_259	View the number of devices in given site	To view the total number of devices added in the given site	Passed	
DNACJ235S_Reg_260	Check the details of Network Devices in the specific site	To check the details of Network Devices in the specific site	Passed	
DNACJ235S_Reg_261	the Detailed view of network Device-Device 360	To view the Detailed view of network Device-Device 360	Passed	
DNACJ235S_Reg_262	the map and comparison view of network Device-Device 360	To view the map and comparison view of network Device- Device 360	Passed	
DNACJ235S_Reg_263	the map and comparison- Table view of network Device - Device 360	To view the map and comparison-Table view of network Device-Device 360	Passed	
DNACJ235S_Reg_264	the map and comparison - Map view of network Device- Device 360	To view the map and comparison-Map view of network Device-Device 360	Passed	
DNACJ235S_Reg_265	Detailed Information of Network Device-Device 360	To view the detailed Information of Network Device-Device 360	Passed	CSCwd53098
DNACJ235S_Reg_266	Detailed Information of Radio Frequency-Device 360	To view the detailed Information of Radio Frequency-Device 360	Passed	

DNACJ235S_Reg_267	Detailed Information of Ethernet- Device 360	To view the detailed Information of Ethernet Device- Device 360	Passed	
DNACJ235S_Reg_268	Network Heatmap page through Site 360	To view the Network heatmap page through Site 360	Passed	
DNACJ235S_Reg_269	Detail Information of Interfaces-Device 360	To view the detailed Information of Interfaces-Device 360	Passed	
DNACJ235S_Reg_270	Detail Information of Controller Device -Device 360	To view the detailed Information of Controller Device -Device 360	Passed	

Managing WLC HA SSO via DNAC - Enhancements

DNACJ235S_Reg_271	Manage network devices in DNAC using Inventory & PNP flow	To manage network devices in DNAC using Inventory & PNP flow	Passed	
DNACJ235S_Reg_272	Pair HA device using DNAC	To perform HA pairing using DNAC	Passed	
DNACJ235S_Reg_273	Add existing HA device to DNAC	To check and add existing HA device to DNAC	Passed	
DNACJ235S_Reg_274	Unpair the HA device using DNAC	To check if unpairing occurs using DNAC	Passed	
DNACJ235S_Reg_275	Check configure WLC HA option for standalone eWLC	To check configure WLC HA option for standalone eWLC	Passed	
DNACJ235S_Reg_276	Configure WLC HA option using incorrect IP address	To configure WLC HA option using incorrect IP address	Passed	
DNACJ235S_Reg_277	Pair 9800CL HA device using DNAC	To pair 9800CL HA device using DNAC	Passed	
DNACJ235S_Reg_278	Check HA pairing for existing HA device	To check HA pairing for existing HA device	Passed	
DNACJ235S_Reg_279	Try configure WLC HA option using EWC	To try configure WLC HA option using EWC	Passed	
DNACJ235S_Reg_280	Try configure WLC HA option using EWC HA device	To try configure WLC HA option using EWC HA device	Passed	

Network Insights 2-Radio Insights based on Client Experience

Logical ID	Title	Description	Status	Defect ID
DNACJ235S_Reg_281	Add 9120 AP to DNAC and validate the details in Network insights.	To Validate the Network service Analytics for 9120 AP	Passed	
DNACJ235S_Reg_282	Validate the Issue count gradient in network insights.	To Validate the Issue count gradient in network insights.	Passed	
DNACJ235S_Reg_283	Add 9115 AP to DNAC and validate the details in Network insights.	To Validate the Network service Analytics of Insights for 9115 AP	Passed	
DNACJ235S_Reg_284	Check the Client load per week in network insights.	To Check the Client load per week in network insights.	Passed	
DNACJ235S_Reg_285	Check the network insights filters for capacity ,coverage & throughput.	To Check the network insights filters for capacity ,coverage & throughput.	Passed	
DNACJ235S_Reg_286	Add 9130 AP to DNAC and validate the details in Network insights.	To Validate the Network service Analytics for 9130 AP	Passed	
DNACJ235S_Reg_287	Add 9105 AP to DNAC and validate the details in Network insights.	To Validate the Network service Analytics for 9105 AP	Passed	
DNACJ235S_Reg_288	Validate 9120 AP in Network Heatmap with 2.4Ghz band	To Validate the Network service Analytics Heat map for 9120 AP	Passed	
DNACJ235S_Reg_289	Validate 9115 AP in Network Heatmap with 5Ghz band	To Validate the Network service Analytics Heat map for 9115 AP	Passed	
DNACJ235S_Reg_290	Validate 9130 AP in Network Heatmap with 2.4Ghz band	To Validate the Network service Analytics Heat map for 9130 AP	Passed	

DNACJ235S_Reg_291	Validate 9105 AP in Network Heatmap with 5Ghz band	To Validate the Network service Analytics Heat map for 9105 AP	Passed	
DNACJ235S_Reg_292	Compare 9120 AP & 9130 AP in peer networks	To compare the AP's in Network service Analytics	Passed	
DNACJ235S_Reg_293	Compare 9120 AP & 9115 AP in peer networks	To compare the AP's in Network service Analytics	Passed	
DNACJ235S_Reg_294	Compare 9120 AP & 9105 AP in peer networks	To compare the AP's in Network service Analytics	Passed	
DNACJ235S_Reg_295	Compare 9115 AP & 9105 AP in peer networks	To compare the AP's in Network service Analytics	Passed	
DNACJ235S_Reg_296	Compare 9115 AP & 9130 AP in peer networks	To compare the AP's in Network service Analytics	Passed	
DNACJ235S_Reg_297	Compare 9130 AP & 9105 AP in peer networks	To compare the AP's in Network service Analytics	Passed	
DNACJ235S_Reg_298	Create Two Networks with different types AP's	To compare the Networks in Network service Analytics	Passed	

Inventory: Support for Maintenance mode

Logical ID	Title	Description	Status	Defect ID
DNACJ235S_Reg_299	Adding different network devices in DNAC	To add network devices like switches, Controllers to DNAC and check if the network devices gets added to DNAC or not	Passed	
DNACJ235S_Reg_300	Provisioning a the network device through inventory page via DNAC	To provision the network device via DNAC through the option in inventory page	Passed	
DNACJ235S_Reg_301	Scheduling Maintenance for eWLC 9800-40 device	To schedule Maintenance for the eWLC 9800-40 device and check if the device is moved to Maintenance mode or not	Passed	
DNACJ235S_Reg_302	Scheduling Maintenance for eWLC 9800-80 device	To schedule Maintenance for the eWLC 9800-80 device and check if the device is moved to Maintenance mode or not	Passed	
DNACJ235S_Reg_303	Scheduling Maintenance for eWLC 9800-L device	To schedule Maintenance for the eWLC 9800-L device and check if the device is moved to Maintenance mode or not	Passed	
DNACJ235S_Reg_304	Scheduling Maintenance for eWLC 9800-CL device	To schedule Maintenance for the eWLC 9800-CL device and check if the device is moved to Maintenance mode or not	Passed	

DNACJ235S_Reg_305	Configuring eWLC AP to Maintenance state and check the behaviour	To schedule a Maintenance for the AP connected in eWLC and check if the Maintenance is applied for it or not	Passed	
DNACJ235S_Reg_306	Configuring EWC AP to Maintenance state and check the behaviour	To schedule a Maintenance for the AP connected in EWC and check if the Maintenance is applied for it or not	Passed	
DNACJ235S_Reg_307	Configuring Maintenance state for device with end times given in hours	To make a network device to maintenance state with end of maintenance in hours	Passed	
DNACJ235S_Reg_308	Configuring Maintenance state for device with end times in date and time	To make a network device to maintenance state with end of maintenance in days and hours	Passed	
DNACJ235S_Reg_309	Maintenance mode with recurrence as daily	To schedule the maintenance for the eWLC device with recurrence as daily	Passed	
DNACJ235S_Reg_310	Maintenance mode with recurrence as Weekly	To schedule the maintenance for the eWLC device with recurrence as Weekly and check if the mode is activated the number of times specified	Passed	
DNACJ235S_Reg_311	Scheduling Maintenance for eWLC device in HA mode	To schedule Maintenance for the eWLC device which has HA pair in active and check if the device is moved to Maintenance mode or not	Passed	

DNACJ235S_Reg_312	Schedule Maintenance for the eWLC device which is not reachable from DNAC	To schedule Maintenance for the eWLC device which is not reachable from DNAC and check if the device is moved to Maintenance mode or not	Passed	
DNACJ235S_Reg_313	Schedule Maintenance for the EWC device which is not reachable from DNAC	To schedule Maintenance for the EWC device which is not reachable from DNAC and check if the device is moved to Maintenance mode or not	Passed	
DNACJ235S_Reg_314	Scheduling Maintenance for the eWLC device for which Netconf is given wrongly	To scheduling maintenance for the eWLC device for which Netconf is given wrongly	Passed	
DNACJ235S_Reg_315	Scheduling Maintenance for the EWC device for which Netconf is given wrongly	To scheduling maintenance for the EWC device for which Netconf is given wrongly	Passed	
DNACJ235S_Reg_316	Managing the eWLC device in the Maintenance mode	To managing the eWLC device in the Maintenance mode	Passed	
DNACJ235S_Reg_317	Managing the EWC device in the Maintenance mode	To managing the EWC device in the Maintenance mode	Passed	

AP Reboot for Troubleshooting

Logical ID	Title	Description	Status	Defect ID
DNACJ235S_Reg_318	Selecting 9120 AP for reboot	To Verify the 9120 Ap rebooted or not	Passed	
DNACJ235S_Reg_319	Selecting 9130 AP for reboot	To Verify the 9130 Ap rebooted or not	Passed	
DNACJ235S_Reg_320	Selecting 9115 AP for reboot	To Verify the 9115 Ap rebooted or not	Passed	
DNACJ235S_Reg_321	Selecting 9105 AP for reboot	To Verify the 9105 Ap rebooted or not	Passed	
DNACJ235S_Reg_322	Selecting multiple AP's belonging to the same Controller	To Verify the Ap's rebooted or not while ap's connected to same controller	Passed	
DNACJ235S_Reg_323	Selecting multiple AP's belonging to different Controller	To Verify the Ap's rebooted or not while ap's connected to different controller	Passed	
DNACJ235S_Reg_324	Selecting EWC master AP for reboot	To Verify the EWC master Ap rebooted or not	Passed	
DNACJ235S_Reg_325	Selecting NON-AP device for reboot option	To Verify non-ap devices rebooted or not	Passed	
DNACJ235S_Reg_326	Selecting more than 200 Aps for Reboot	To Verify the Ap's selected or not beyond the max limit	Passed	
DNACJ235S_Reg_327	APs selected for reboot are unreachable	To verify unreachable ap's selected for reboot or not	Passed	
DNACJ235S_Reg_328	Selecting Flex connect AP for reboot	To verify Flex connect Ap reboot or not	Passed	
DNACJ235S_Reg_329	Ap's selected for reboot are already part of in-progress provision flow	To verify Ap reboot or not which is already part of in provision flow	Passed	

DNACJ235S_Reg_330	Selecting APs & unsupported device for reboot	To Verify error shown or not for unsupported devices	Passed	
DNACJ235S_Reg_331	AP selected for reboot with schedule now option selected in the scheduler side bar	To verify ap rebooted with schedule now option	Passed	
DNACJ235S_Reg_332	AP selected for reboot with schedule later option selected in the scheduler side bar	To verify ap rebooted with schedule later option	Passed	
DNACJ235S_Reg_333	Selecting un-provisioned AP for reboot	To verify un-provisioned ap rebooted or not	Passed	
DNACJ235S_Reg_334	Verifying ap 2.4 ghz radio configuration after ap reboot	To verify 2.4 ghz configuration changed or not after ap reboot	Passed	
DNACJ235S_Reg_335	Verifying ap 5 ghz radio configuration after ap reboot	To verify 5 ghz configuration changed or not after ap reboot	Passed	
DNACJ235S_Reg_336	Verifying security type of client after ap reboot	To verify security type configuration changed or not after ap reboot	Passed	
DNACJ235S_Reg_337	Ap selected for continuous reboot	To verify crash happen or not during continuous reboot	Passed	

Support for recurring discovery

Logical ID	Title	Description	Status	Defect ID
DNACJ235S_Reg_338	Enable discovery using recurrence option	To enable discovery using recurrence option	Passed	
DNACJ235S_Reg_339	Schedule recurrence using daily option	To schedule recurrence using daily option	Passed	
DNACJ235S_Reg_340	Schedule recurrence using weekly option	To schedule recurrence using weekly option	Passed	
DNACJ235S_Reg_341	Schedule recurring job using CDP option	To schedule job using CDP option	Passed	
DNACJ235S_Reg_342	Schedule recurring job using LLDP option	To schedule job using LLDP option	Passed	
DNACJ235S_Reg_343	Verify if new devices are discovered during recurrence	To verify if new devices are discovered during recurrence	Passed	
DNACJ235S_Reg_344	Schedule more than recurring discovery jobs	To schedule more than recurring discovery jobs	Passed	
DNACJ235S_Reg_345	Schedule discovery job with incorrect time range	To schedule discovery job with incorrect time range	Passed	
DNACJ235S_Reg_346	Verify the deletion of recurring job	To verify the deletion of recurring job	Passed	
DNACJ235S_Reg_347	Duplicate the recurring job and edit to create another job	To duplicate the recurring job and edit to create another job	Passed	
DNACJ235S_Reg_348	Delete devices from inventory and check if its discovered again during recurring discovery	To delete devices from inventory and check if its discovered again during recurring discovery	Passed	

DNACJ235S_Reg_349	Edit recurring discovery job from tasks page	To edit recurring discovery job from tasks page	Passed	
DNACJ235S_Reg_350	Cancel recurring discovery job from tasks page	To cancel recurring discovery job from tasks page	Passed	

Support configuration of advanced WLAN parameters

Logical ID	Title	Description	Status	Defect ID
DNACJ235S_Reg_351	Test Max clients per wlan with wrong values	To test Max clients per wlan with wrong values	Passed	
DNACJ235S_Reg_352	Test attributes at there corner case values. Value one greater than the max value	To test attributes at there corner case values. Value one greater than the max value	Passed	
DNACJ235S_Reg_353	Test attributes at there corner case values. Value one lesser than the min value	To test attributes at there corner case values. Value one lesser than the min value	Passed	
DNACJ235S_Reg_354	Test attributes at there corner case values. Value exactly equal to max value allowed	To test attributes at there corner case values. Value exactly equal to max value allowed	Passed	
DNACJ235S_Reg_355	Test attributes at there corner case values. Value exactly equal to min value allowed	To test attributes at there corner case values. Value exactly equal to min value allowed	Passed	
DNACJ235S_Reg_356	Test if Load bupponce and Assisted roaming prediction can be enabled simultaneously.	To test if Load bupponce and Assisted roaming prediction can be enabled simultaneously.	Passed	
DNACJ235S_Reg_357	Test Max client Per WLAN should be in range of [0-10000] for eWLC device. Hence give, out of range value and see if it shows valid at ion failure at provision time	To test Max client Per WLAN should be in range of [0-10000] for eWLC device. Hence give, out of range value and see if it shows valid at ion failure at provision time	Passed	

DNACJ235S_Reg_358	Test provisioning with new design that has all values unset Operation=Up date existing wlan	To test provisioning with new design that has all values unset Operation=Up date existing wlan	Passed	
DNACJ235S_Reg_359	Test provisioning with default design that has all some values unset, and see what values are passed for such attributes. Operation=Up date existing wlan	To test provisioning with default design that has all some values unset, and see what values are passed for such attributes. Operation=Up date existing wlan	Passed	
DNACJ235S_Reg_360	Test provisioning with new design that has all values unset Operation=Create New wlan	To test provisioning with new design that has all values unset Operation=Create New wlan	Passed	
DNACJ235S_Reg_361	Validate if Model config discovery is able to fetch all values correctly	To validate if Model config discovery is able to fetch all values correctly	Passed	
DNACJ235S_Reg_362	Check if exporting a Model Config design instance has all values correctly	To check if exporting a Model Config design instance has all values correctly	Passed	
DNACJ235S_Reg_363	Check if importing a Model Config design Json file, results in correct rendering of UI with correct values	To check if importing a Model Config design Json file, results in correct rendering of UI with correct values	Passed	
DNACJ235S_Reg_364	Connect Windows Client and verify Advanced wlan parameters	Connect Windows Client and verify Advanced wlan parameters	Passed	
DNACJ235S_Reg_365	Connect Android Client and verify Advanced wlan parameters	Connect Android Client and verify Advanced wlan parameters	Passed	
DNACJ235S_Reg_366	Connect MAC Client and verify Advanced wlan parameters	Connect MAC Client and verify Advanced wlan parameters	Passed	

DNACJ235S_Reg_367	Connect IOS Client and verify Advanced wlan parameters	Connect IOS Client and verify Advanced wlan parameters	Passed	
DNACJ235S_Reg_368	Connect Go Plus Client and verify Advanced wlan parameters	Connect Go Plus Client and verify Advanced wlan parameters	Passed	

DNA Dashboard for Open RRM

Logical ID	Title	Description	Status	Defect ID
DNACJ235S_Reg_369	Configure Open RRM and enable connectivity to kairos cloud	To configure Open RRM and enable connectivity to kairos cloud	Passed	
DNACJ235S_Reg_370	Configure Open RRM and test for 5ghz band	To configure Open RRM and for 5ghz band	Passed	
DNACJ235S_Reg_371	Configure Open RRM and test for 2.4ghz band	To configure Open RRM and test for 2.4ghz band	Passed	
DNACJ235S_Reg_372	Configure Open RRM with WPA3 security	To configure Open RRM with WPA3 security	Passed	
DNACJ235S_Reg_373	Configure Open RRM with WPA2 security	To configure Open RRM with WPA2 security	Passed	
DNACJ235S_Reg_374	Configure Open RRM and test with android client	To configure Open RRM and test with android client	Passed	
DNACJ235S_Reg_375	Configure Open RRM and test with iphone client	To configure Open RRM and test with iphone client	Passed	
DNACJ235S_Reg_376	Configure Open RRM and test with MAC client	To configure Open RRM and test with MAC client	Passed	
DNACJ235S_Reg_377	Configure Open RRM and test with Surface client	To configure Open RRM and test with Surface client	Passed	
DNACJ235S_Reg_378	Configure Open RRM and test with Windows client	To configure Open RRM and test with Windows client	Passed	
DNACJ235S_Reg_379	Configure Open RRM and test with only FRA enabled	To configure Open RRM and test with only FRA enabled	Passed	
DNACJ235S_Reg_380	Configure Open RRM and test with only DCA enabled	To configure Open RRM and test with only DCA enabled	Passed	

DNACJ235S_Reg_381	Configure Open RRM and test with only TPC enabled	To configure Open RRM and test with only TPC enabled	Passed	
DNACJ235S_Reg_382	Configure Open RRM and test with only DBS enabled	To configure Open RRM and test with only DBS enabled	Passed	
DNACJ235S_Reg_383	Configure Open RRM and test with different RF algorithm combinations	To configure Open RRM and test with different RF algorithm combinations	Passed	
DNACJ235S_Reg_384	Configure Open RRM and test with manually assigned channel bandwidth and channel nos	To configure Open RRM and test with manually assigned channel bandwidth and channel nos	Passed	
DNACJ235S_Reg_385	Configure Open RRM and test with 9115, 9120, 9130 AP	To configure Open RRM and test with 9115, 9120, 9130 AP	Passed	
DNACJ235S_Reg_386	Configure Open RRM and test with 4800 AP	To configure Open RRM and test with 4800 AP	Passed	
DNACJ235S_Reg_387	Configure Open RRM and test with eWLC HA	To configure Open RRM and test with eWLC HA	Passed	
DNACJ235S_Reg_388	Configure Open RRM and test with EWC	To configure Open RRM and test with EWC	Passed	
DNACJ235S_Reg_389	Monitor RRM parameters and data over different time range	To monitor RRM parameters and data over different time range	Passed	
DNACJ235S_Reg_390	Monitor RRM parameters and data over 2.4/5Ghz	To monitor RRM parameters and data over 2.4/5Ghz	Passed	
DNACJ235S_Reg_391	Monitor spatial density, power distribution and other parameters based on the relevant device	To monitor spatial density, power distribution and other parameters based on the relevant device	Passed	

Unique clients and users summary

Logical ID	Title	Description	Status	Defect ID
DNACJ235S_Reg_392	Create report with default preset options	To create report with default preset options	Passed	
DNACJ235S_Reg_393	Test report with 'Global' for location filter	To test report with 'Global' for location filter	Passed	
DNACJ235S_Reg_394	Test report with single area for location filter	To test report with single area for location filter	Passed	
DNACJ235S_Reg_395	Test report with multiple areas for location filter	To test report with multiple areas for location filter	Passed	CSCwd50594
DNACJ235S_Reg_396	Test report with single building for location filter	To test report with single building for location filter	Passed	
DNACJ235S_Reg_397	Test report with multiple buildings for location filter	To test report with multiple buildings for location filter	Passed	
DNACJ235S_Reg_398	Test report with single floor for location filter	To test report with single floor for location filter	Passed	
DNACJ235S_Reg_399	Test report with multiple floors for location filter	To test report with multiple floors for location filter	Passed	
DNACJ235S_Reg_400	Test report with mixed area, building, floor for location filter	To test report with mixed area, building, floor for location filter	Passed	
DNACJ235S_Reg_401	Test WLC filter-single	To test WLC filter-single	Passed	
DNACJ235S_Reg_402	Test WLC filter-multiple	To test WLC filter-multiple	Passed	
DNACJ235S_Reg_403	Test with both WLC and Location filter	To test with both WLC and Location filter	Passed	
DNACJ235S_Reg_404	Test report with only one field for content	To test report with only one field for content	Passed	

DNACJ235S_Reg_405	Test report with subset field for content	To test report with subset field for content	Passed	
DNACJ235S_Reg_406	Test report with breakdown by VLAN	To test report with breakdown by VLAN	Passed	
DNACJ235S_Reg_407	Test report with breakdown by SSID	To test report with breakdown by SSID	Passed	
DNACJ235S_Reg_408	Test report with breakdown by Vendor	To test report with breakdown by Vendor	Passed	
DNACJ235S_Reg_409	Test report with breakdown by protocol	To test report with breakdown by protocol	Passed	
DNACJ235S_Reg_410	Test report sort by 'Client Count'	To test report sort by 'Client Count'	Passed	
DNACJ235S_Reg_411	Test report schedule function	To test report schedule function	Passed	
DNACJ235S_Reg_412	Verify report data accuracy with different type of clients	To verify report data accuracy with different type of APs	Passed	

Rolling AP Upgrade

Logical ID	Title	Description	Status	Defect ID
DNACJ235S_Reg_413	Providing the same controller name and ip address for primary controller and N+1 controller	To check whether the same controller name is accepted or not for primary controller and N+1 controller	Passed	
DNACJ235S_Reg_414	Upgrading the software image in a controller	To check whether the software image is upgraded in controller	Passed	
DNACJ235S_Reg_415	Scheduling the time to upgrade the software image into a controller.	To check whether the software image is upgraded into a controller in scheduling time	Passed	
DNACJ235S_Reg_416	Scheduling the time "Now" to upgrade the software image into a controller.	To check whether the software image is upgraded into a controller in scheduling time "Now"	Passed	
DNACJ235S_Reg_417	ReSync trigger to Controller from DNAC after upgrade the software image in controller.	To check whether Controller is reloaded when triggering from DNAC after upgrade the software image in controller.	Passed	
DNACJ235S_Reg_418	Upgrade the wrong software image into the Controller from DNAC	To verify whether the error message will display when trying to upgrade wrong software image into the Controller from DNAC	Passed	
DNACJ235S_Reg_419	AP joining status to Controller after upgrade the software image	To check whether the joined Aps upgraded with controller image	Passed	

DNACJ235S_Reg_420	Verify the client connectivity status to Controller after upgrade the software image	To check whether the Client associate with controller	Passed	
DNACJ235S_Reg_421	Upgrading the software image into existing group of AP	To check whether the software image is upgraded into existing group of AP	Passed	
DNACJ235S_Reg_422	Import the image to image repository using HTTP	To check whether the WLC is upgraded using TFTP from PI	Passed	
DNACJ235S_Reg_423	Import the image to image repository using FTP	To check whether the WLC is upgraded using FTP from PI	Passed	

Busiest AP

Logical ID	Title	Description	Status	Defect ID
DNACJ235S_Reg_424	Error message check	To check whether error message is popped if 'Number of Aps' and 'Sort by' filters are left blank	Passed	
DNACJ235S_Reg_425	Default check	To create a report with default value	Passed	
DNACJ235S_Reg_426	Test report with 'Global' for location filter	To test report with 'Global' for location filter	Passed	
DNACJ235S_Reg_427	Test report with single area for location filter	To test report with single area for location filter	Passed	
DNACJ235S_Reg_428	Test report with multiple areas for location filter	To test report with multiple areas for location filter	Passed	
DNACJ235S_Reg_429	Test report with single building for location filter	To test report with single building for location filter	Passed	
DNACJ235S_Reg_430	Test report with multiple buildings for location filter	To test report with multiple buildings for location filter	Passed	
DNACJ235S_Reg_431	Test WLC filter-single	To test WLC filter-single	Passed	
DNACJ235S_Reg_432	Test WLC filter-multiple	To test WLC filter-multiple	Passed	
DNACJ235S_Reg_433	Test with both WLC and Location filter	To test with both WLC and Location filter	Passed	
DNACJ235S_Reg_434	Test report with mixed area, building, floor for location filter	To test report with mixed area, building, floor for location filter	Passed	
DNACJ235S_Reg_435	Test report with top 10 APs	To test report with top 10 APs	Passed	
DNACJ235S_Reg_436	Test report with top 25 APs	To test report with top 25 APs	Passed	
DNACJ235S_Reg_437	Test report with top 50 APs	To test report with top 50 APs	Passed	

DNACJ235S_Reg_438	Test report with All APs	To test report with All APs	Passed	
DNACJ235S_Reg_439	Test report sort by 'AP Name'	To test report sort by 'AP Name'	Passed	
DNACJ235S_Reg_440	Test report sort by 'Rx Utilization'	To test report sort by 'Rx Utilization'	Passed	
DNACJ235S_Reg_441	Test report sort by 'Tx Utilization'	To test report sort by 'Tx Utilization'	Passed	
DNACJ235S_Reg_442	Test report sort by 'Radio Utilization'	To test report sort by 'Radio Utilization'	Passed	
DNACJ235S_Reg_443	Test report sort by 'Client Count'	To test report sort by 'Client Count'	Passed	
DNACJ235S_Reg_444	Test report schedule function	To test report schedule function	Passed	

Busiest Client Report

Logical ID	Title	Description	Status	Defect ID
DNACJ235S_Reg_553	Default value check	To check default value	Passed	
DNACJ235S_Reg_554	Test report with 'Global' for location filter	To test report with 'Global' for location filter	Passed	
DNACJ235S_Reg_555	Test report with single area for location filter	To test report with single area for location filter	Passed	
DNACJ235S_Reg_556	Test report with multiple areas for location filter	To test report with multiple areas for location filter	Passed	
DNACJ235S_Reg_557	Test report with single building for location filter	To test report with single building for location filter	Passed	
DNACJ235S_Reg_558	Test report with multiple buildings for location filter	To test report with multiple buildings for location filter	Passed	
DNACJ235S_Reg_559	Test report with single floor for location filter	To test report with single floor for location filter	Passed	
DNACJ235S_Reg_560	Test report with multiple floors for location filter	To test report with multiple floors for location filter	Passed	
DNACJ235S_Reg_561	Test report with mixed area, building, floor for location filter	To test report with mixed area, building, floor for location filter	Passed	
DNACJ235S_Reg_562	Test WLC filter-single	To test WLC filter-single	Passed	
DNACJ235S_Reg_563	Test WLC filter-multiple	To test WLC filter-multiple	Passed	
DNACJ235S_Reg_564	Test with both WLC and Location filter	To test with both WLC and Location filter	Passed	
DNACJ235S_Reg_565	Test report with only one field for content	To test report with only one field for content	Passed	

DNACJ235S_Reg_566	Test report with subset field for content	To test report with subset field for content	Passed	
DNACJ235S_Reg_567	Test report sort by 'client Name'	To test report sort by 'client Name'	Passed	
DNACJ235S_Reg_568	Test report sort by 'Rx Utilization'	To test report sort by 'Rx Utilization'	Passed	
DNACJ235S_Reg_569	Test report sort by 'Tx Utilization'	To test report sort by 'Tx Utilization'	Passed	
DNACJ235S_Reg_570	Test report sort by 'Channel Utilization'	To test report sort by 'Channel Utilization'	Passed	
DNACJ235S_Reg_571	Test report sort by 'Client Count'	To test report sort by 'Client Count'	Passed	
DNACJ235S_Reg_572	Test report schedule function	To test report schedule function	Passed	
DNACJ235S_Reg_573	Verify report data accuracy with different type of clients	To verify report data accuracy with different type of clients	Passed	
DNACJ235S_Reg_574	Test with Client connecting to 2 radios	To test with Client connecting to 2 radios	Passed	
DNACJ235S_Reg_575	Test with Client connecting to 3 radios	To test with Client connecting to 3 radios	Passed	
DNACJ235S_Reg_576	Verify report data accuracy with client radio change band within an hour	To verify report data accuracy with client radio change band within an hour	Passed	
DNACJ235S_Reg_577	Verify report data accuracy with client radio change band more than an hour	To verify report data accuracy with client radio change band more than an hour	Passed	
DNACJ235S_Reg_578	Verify report data accuracy with client radio change band more than a day	To verify report data accuracy with client radio change band more than a day	Passed	

Show Rogue client location in the threat 360

Logical ID	Title	Description	Status	Defect ID
DNACJ235S_Reg_445	Verify maps is loading properly	To verify maps is loading properly in 360 degree view of Rogue dashboard screen	Passed	
DNACJ235S_Reg_446	Verify the deducting AP are getting plotted	To verify the deducting AP are getting plotted in 360 degree view of Rogue dashboard screen	Passed	
DNACJ235S_Reg_447	Verify the rogue AP are getting plotted	To verify the rogue AP are getting plotted in 360 degree view of Rogue dashboard screen	Passed	
DNACJ235S_Reg_448	Verify the client are getting plotted	To verify the client are getting plotted in 360 degree view of Rogue dashboard screen	Passed	
DNACJ235S_Reg_449	Verify color format as per Threat Level	To verify color format as per Threat Level	Passed	
DNACJ235S_Reg_450	Verify the full screen option of Maps	To verify the full screen option of Maps in 360 degree view	Passed	
DNACJ235S_Reg_451	Verify Start Containment is disabled or not	To verify Start Containment is disabled or not	Passed	
DNACJ235S_Reg_452	Verify Detections and Clients are showing as per the data	To verify Detections and Clients are showing as per the data	Passed	
DNACJ235S_Reg_453	Export Clients data	To export Clients data	Passed	

Show Rogue client location in the threat 360

DNACJ235S_Reg_454	Perform Beacon Wrong Channel Rogue detection for Windows MACHine and verify Client Location	To perform Beacon Wrong Channel Rogue detection for Windows MACHine and to verify Client Location	Passed	
DNACJ235S_Reg_455	Perform Beacon Wrong Channel Rogue detection for Android client and verify Client Location	To perform Beacon Wrong Channel Rogue detection for Android client and to verify Client Location	Passed	
DNACJ235S_Reg_456	Perform Beacon Wrong Channel Rogue detection for MAC client and verify Client Location	To perform Beacon Wrong Channel Rogue detection for MAC client and to verify Client Location	Passed	
DNACJ235S_Reg_457	Perform Beacon Wrong Channel Rogue detection for IOS client and verify Client Location	To perform Beacon Wrong Channel Rogue detection for IOS client and to verify Client Location	Passed	
DNACJ235S_Reg_458	Perform Beacon Wrong Channel Rogue detection for Go Plus client and verify Client Location	To perform Beacon Wrong Channel Rogue detection for Go Plus client and to verify Client Location	Passed	
DNACJ235S_Reg_459	Verify Last Reported Threat 360 MAC	To verify Last Reported Threat 360 MAC	Passed	

RRM - Support for General Parameters

Logical ID	Title	Description	Status	Defect ID
DNACJ235S_Reg_460	Configuring Access Points, Channel width radio parameters for 5Ghz band.	To configure Access Points, Channel width radio parameters for 5Ghz band.	Passed	
DNACJ235S_Reg_461	Configuring Access Points, Channel width radio parameters for 2.4Ghz band.	To configure Access Points, Channel width radio parameters for 2.4Ghz band.	Passed	
DNACJ235S_Reg_462	Configure channel parameters for 5ghz band and monitor in DNAC	To configure channel parameters for 5ghz band and monitor in DNAC	Passed	
DNACJ235S_Reg_463	Configure channel parameters for 5ghz band slot 2 and monitor in DNAC	To configure channel parameters for 5ghz band slot 2 and monitor in DNAC	Passed	
DNACJ235S_Reg_464	Configure channel parameters for 24ghz band and monitor in DNAC	To configure channel parameters for 24ghz band and monitor in DNAC	Passed	
DNACJ235S_Reg_465	Configure channel parameters for dual band and monitor in DNAC	To configure channel parameters for dual band and monitor in DNAC	Passed	
DNACJ235S_Reg_466	Channel updation and monitor assurance in DNAC	To perform channel updation and monitor assurance in DNAC	Passed	
DNACJ235S_Reg_467	Configure tx power for 5ghz band and monitor in DNAC	To configure tx power for 5ghz band and monitor in DNAC	Passed	
DNACJ235S_Reg_468	Configure tx power for 24ghz band and monitor in DNAC	To configure tx power for 24ghz band and monitor in DNAC	Passed	

DNACJ235S_Reg_469	Configure tx power for dual band and monitor in DNAC	To configure tx power for dual band and monitor in DNAC	Passed	
DNACJ235S_Reg_470	Configure tx power for 5ghz rrm band and monitor in DNAC	To configure tx power for 5ghz rrm band and monitor in DNAC	Passed	
DNACJ235S_Reg_471	Configure tx power for 24ghz rrm band and monitor in DNAC	To configure tx power for 24ghz rrm band and monitor in DNAC	Passed	
DNACJ235S_Reg_472	Validate assurance via RRM using Android client	To validate assurance via RRM using Android client	Passed	
DNACJ235S_Reg_473	Validate assurance via RRM using Surface client	To validate assurance via RRM using Surface client	Passed	
DNACJ235S_Reg_474	Validate assurance via RRM using MAC client	To validate assurance via RRM using MAC client	Passed	
DNACJ235S_Reg_475	Validate assurance via RRM using different models of AP	To validate assurance via RRM using different models of AP	Passed	
DNACJ235S_Reg_476	Validate assurance via RRM using EWC-AP	To validate assurance via RRM using EWC-AP	Passed	
DNACJ235S_Reg_477	Validate assurance via RRM using HA pair	To validate assurance via RRM using HA pair	Passed	

Troubleshoot Certification 2 - WLC Unmonitored

Logical ID	Title	Description	Status	Defect ID
DNACJ235S_Reg_478	Add network devices like switches, Controllers to DNAC and check if the network devices gets added to DNAC or not	To add network devices like switches, Controllers to DNAC and check if the network devices gets added to DNAC or not	Passed	
DNACJ235S_Reg_479	Add 9800-80 controller and check if the devices gets added to DNAC or not	To add 9800-80 controller and check if the devices gets added to DNAC or not	Passed	
DNACJ235S_Reg_480	Check the Health Score of the controller and Do Unmonitored state analysis if the device is in unmonitored state	To check the Health Score of the controller and Do Unmonitored state analysis if the device is in unmonitored state	Passed	
DNACJ235S_Reg_481	Add 9800-40 controller and check if the devices gets added to DNAC or not	To add 9800-40 controller and check if the devices gets added to DNAC or not	Passed	
DNACJ235S_Reg_482	Check the Health Score of the controller and Do Unmonitored state analysis if the device is in unmonitored state	To check the Health Score of the controller and Do Unmonitored state analysis if the device is in unmonitored state	Passed	
DNACJ235S_Reg_483	Add 9800-L controller and check if the devices gets added to DNAC or not	To add 9800-L controller and check if the devices gets added to DNAC or not	Passed	

DNACJ235S_Reg_484	Check the Health Score of the controller and Do Unmonitored state analysis if the device is in unmonitored state	To check the Health Score of the controller and Do Unmonitored state analysis if the device is in unmonitored state	Passed	
DNACJ235S_Reg_485	Add 9800-CL controller and check if the devices gets added to DNAC or not	To add 9800-CL controller and check if the devices gets added to DNAC or not	Passed	
DNACJ235S_Reg_486	Check the Health Score of the controller and Do Unmonitored state analysis if the device is in unmonitored state	To check the Health Score of the controller and Do Unmonitored state analysis if the device is in unmonitored state	Passed	
DNACJ235S_Reg_487	Add Aireos controller and check if the devices gets added to DNAC or not	To add Aireos controller and check if the devices gets added to DNAC or not	Passed	
DNACJ235S_Reg_488	Check the Health Score of the controller and Do Unmonitored state analysis if the device is in unmonitored state	To check the Health Score of the controller and Do Unmonitored state analysis if the device is in unmonitored state	Passed	
DNACJ235S_Reg_489	Do the Assurance Telemetry Analysis from Tools page	To do the Assurance Telemetry Analysis from Tools page	Passed	
DNACJ235S_Reg_490	Check Whether only No Health devices are shown in the Assurance Telemetry Analysis	To check Whether only No Health devices are shown in the Assurance Telemetry Analysis	Passed	
DNACJ235S_Reg_491	Check whether all the assurance configuration check are done for IOS device	To check whether all the assurance configuration check are done for IOS device	Passed	

DNACJ235S_Reg_492	Check whether all the assurance configuration check are done for AireOS device	To check whether all the assurance configuration check are done for AireOS device	Passed	
-------------------	--	---	--------	--

Support for Custom Policy Tag for C9800

Logical ID	Title	Description	Status	Defect ID
DNACJ235S_Reg_493	Configuring DNAC with Network devices, clients, access points.	To configure DNAC with Network devices, clients, access points.	Passed	
DNACJ235S_Reg_494	Configure custom policy tag and provisioning the same to the eWLC	To check if the custom policy tag is configured in DNAC and successfully provisioned or not	Passed	
DNACJ235S_Reg_495	Configure custom policy tag and provisioning the same to the 9800-80 eWLC	To check if the custom policy tag is configured in DNAC and successfully provisioned or not	Passed	CSCwd49960
DNACJ235S_Reg_496	Configure custom policy tag and provisioning the same to the 9800-CL eWLC	To check if the custom policy tag is configured in DNAC and successfully provisioned or not	Passed	
DNACJ235S_Reg_497	Configure custom policy tag and provisioning the same to the 9800-L eWLC	To check if the custom policy tag is configured in DNAC and successfully provisioned or not	Passed	
DNACJ235S_Reg_498	Deleting the custom policy tag created .	To check if the custom policy tag is deleted or not	Passed	
DNACJ235S_Reg_499	Connecting a window client to a SSID mapped with a custom policy tag created from DNAC	To connect a window client to a SSID mapped with a custom policy tag created from DNAC	Passed	
DNACJ235S_Reg_500	Connecting a Windows Surface client to a SSID mapped with a custom policy tag created from DNAC	To connect a Window Surface client to a SSID mapped with a custom policy tag created from DNAC	Passed	

DNACJ235S_Reg_501	Connecting a Android client to a SSID mapped with a custom policy tag created from DNAC	To connect a Android client to a SSID mapped with a custom policy tag created from DNAC	Passed	
DNACJ235S_Reg_502	Connecting a Iphone client to a SSID mapped with a custom policy tag created from DNAC	To connect a Iphone client to a SSID mapped with a custom policy tag created from DNAC	Passed	
DNACJ235S_Reg_503	To connect a MAC os client to a SSID mapped with a custom policy tag created from DNAC	To connect a MAC os client to a SSID mapped with a custom policy tag created from DNAC	Passed	
DNACJ235S_Reg_504	Configuring a SSID with WPA 3 SAE security and connecting a window client to a SSID mapped with a custom policy tag created from DNAC	To configuring a SSID with WPA 3 SAE security and connecting a window client to a SSID mapped with a custom policy tag created from DNAC	Passed	
DNACJ235S_Reg_505	Configuring a SSID with WPA 3 802.1x security and connecting a window client to a SSID mapped with a custom policy tag created from DNAC	To configuring a SSID with WPA 3 802.1x security and connecting a window client to a SSID mapped with a custom policy tag created from DNAC	Passed	
DNACJ235S_Reg_506	Configuring a SSID with WPA 3 OWE security and connecting a window client to a SSID mapped with a custom policy tag created from DNAC	To configuring a SSID with WPA 3 OWE security and connecting a window client to a SSID mapped with a custom policy tag created from DNAC	Passed	
DNACJ235S_Reg_507	Configuring a SSID with WPA 2 PSK security and connecting a window client to a SSID mapped with a custom policy tag created from DNAC	To configuring a SSID with WPA 2 PSK security and connecting a window client to a SSID mapped with a custom policy tag created from DNAC	Passed	

DNACJ235S_Reg_508	Configuring a SSID with WPA 2 802.1x security and connecting a window client to a SSID mapped with a custom policy tag created from DNAC	To configuring a SSID with WPA 2 802.1x security and connecting a window client to a SSID mapped with a custom policy tag created from DNAC	Passed	
DNACJ235S_Reg_509	Configuring a SSID with open security and connecting a window client to a SSID mapped with a custom policy tag created from DNAC	To configuring a SSID with Open security and connecting a window client to a SSID mapped with a custom policy tag created from DNAC	Passed	

Ability to manage multiple AP groups /Policy tags

Logical ID	Title	Description	Status	Defect ID
DNACJ235S_Reg_510	Create AP Zone for set of AP in DNAC	To create AP Zone for set of AP in DNAC	Passed	
DNACJ235S_Reg_511	Assign network profile to a specific floor with multiple APs	To assign network profile to a specific floor with multiple APs	Passed	
DNACJ235S_Reg_512	Check AP zone effect using 9100 AP models	To check AP zone effect using 9100 AP models	Passed	
DNACJ235S_Reg_513	Check AP zone effect using 4800,3800 AP models	To check AP zone effect using 4800,3800 AP models	Passed	
DNACJ235S_Reg_514	Check AP zone effect using 9800-40 controller	To check AP zone effect using 9800-40 controller	Passed	
DNACJ235S_Reg_515	Check AP zone effect using 9800L controller	To check AP zone effect using 9800L controller	Passed	
DNACJ235S_Reg_516	Check AP zone effect using 9800CL controller	To check AP zone effect using 9800CL controller	Failed	CSCwd59823
DNACJ235S_Reg_517	Check AP zone effect using EWC controller	To check AP zone effect using EWC controller	Passed	
DNACJ235S_Reg_518	Check AP zone effect using 9800 HA controller	To check AP zone effect using 9800 HA controller	Passed	
DNACJ235S_Reg_519	Run report generation on the assigned floor and monitor the parameters	To run report generation on the assigned floor and monitor the parameters	Passed	
DNACJ235S_Reg_520	Verify using custom policy tags & RF tags	To verify using custom policy tags & RF tags	Passed	

Support AP refresh across different WLCs

Logical ID	Title	Description	Status	Defect ID
DNACJ235S_Reg_521	Provision network devices in DNAC using Inventory & PNP flow	To provision network devices in DNAC using Inventory & PNP flow	Passed	
DNACJ235S_Reg_522	Perform AP Refresh flow in DNAC and verify the details	To perform AP Refresh flow in DNAC and verify the details	Passed	
DNACJ235S_Reg_523	Check the report after Ap Refresh process is done	To verify AP details in report after ap replacement	Passed	
DNACJ235S_Reg_524	AP Refresh process using different model AP(9115 to 9130)	To verify AP Refresh with different AP model	Passed	
DNACJ235S_Reg_525	Verify AP refresh works fine for all model APs	Verify AP refresh works fine for all model APs	Passed	
DNACJ235S_Reg_526	Choosing new AP from same controller for AP refresh	To choose new AP from same controller for AP refresh	Passed	
DNACJ235S_Reg_527	Choosing new AP from different controller for AP refresh	To choose new AP from different controller for AP refresh	Passed	
DNACJ235S_Reg_528	Perform AP refresh process for bulk amount of AP's	To perform AP refresh process for bulk amount of AP's	Passed	
DNACJ235S_Reg_529	Perform AP refresh across different WLC models	To perform AP refresh across different WLC models	Passed	
DNACJ235S_Reg_530	Perform AP refresh using newer AP models like 9105	To perform AP refresh using newer AP models like 9105	Passed	

Enhancements on AP config flow

Logical ID	Title	Description	Status	Defect ID
DNACJ235S_Reg_531	Modify radio mode and validate details	Verify modifying the Radio mode (all possible mode changes from each mode)	Passed	
DNACJ235S_Reg_532	Configure workflow and verify details in skip to summary page	Verify "Skip to Summary" option is present in the 6 GHz config page	Passed	
DNACJ235S_Reg_533	Configure power assignment values and validate the details	Verify Power Assignment values for Custom options in the 6 GHz config page	Passed	
DNACJ235S_Reg_534	Configure negative value for power assignment	Verify Power Assignment negative values for Custom options in the 6 GHz config page	Passed	
DNACJ235S_Reg_535	Configure channel assignment values	Verify Channel Assignment values for Custom options in the 6 GHz config page	Passed	
DNACJ235S_Reg_536	Configure channel width values in 6 GHz config page	Verify Channel Width values in the 6 GHz config page	Passed	
DNACJ235S_Reg_537	Configure channel assignment values and width combinations	Verify the Channel assignment + width combinations are in accordance with that observed in the device	Passed	
DNACJ235S_Reg_538	Configure Azimuth values for 6GHz config page	Verify Azimuth values in the 6 GHz config page	Passed	
DNACJ235S_Reg_539	Configure Elevation values and validate details	Verify Elevation values in the 6 GHz config page	Passed	

DNACJ235S_Reg_540	Configure workflow and verify review option	Verify Review option in the 6 GHz config page	Passed	
DNACJ235S_Reg_541	Configure workflow and verify back/next buttons behaviour	Verify Back/Next buttons behave as expected in the 6 GHz config page	Passed	
DNACJ235S_Reg_542	Configure workflow and verify resume/cancel options during provision now	Verify Resume/Cancel options of workflow after creation on provisioning now	Passed	
DNACJ235S_Reg_543	Configure workflow and verify resume/cancel options during provision schedule time	Verify Resume/Cancel options of workflow after creation on provisioning at specified time	Passed	
DNACJ235S_Reg_544	Add different Aps associate with different controllers and validate details	Verify 6 GHz config page works fine for APs across same and multiple controllers, varying platforms	Passed	
DNACJ235S_Reg_545	Configure 6GHZ config page and verify other pages in workflow	Verify 6 GHz configurations are not affected by other configurations in the workflow	Passed	
DNACJ235S_Reg_546	Add 6GHz Aps and non-6GHZ ap and verify workflow	Verify 6 GHz configs through workflow do not impact the APs in any way for non-6 GHz APs (different model/platform)	Passed	
DNACJ235S_Reg_547	Configure workflow and verify values in floor map	Verify values set through workflow are reflected in the floor map	Passed	
DNACJ235S_Reg_548	Monitor admin status in RF profile during workflow	Verify how changes made to admin status in RF profile is reflected in the workflow	Passed	

DNACJ235S_Reg_549	Configure workflow for flex connect Aps	Verify the workflow changes in Flex connect mode of the APs (6 and non-6 GHz)	Passed	
DNACJ235S_Reg_550	Configure workflow for sniffer mode Aps	Verify the workflow changes in Sniffer mode of the APs (6 and non-6 GHz)	Passed	
DNACJ235S_Reg_551	Delete Ap and validate the workflow	Delete the AP from Inventory and observe in dissociated state	Passed	
DNACJ235S_Reg_552	Configure workflow for EWC	Verify workflow for EWC device	Passed	

Channel Change Report

Logical ID	Title	Description	Status	Defect ID
DNACJ235S_Reg_690	Generate the report for the radio band 2.4 GHZ and check the details of the report	To check the report generated for radio band 2.4 GHZ and check details of the report	Passed	
DNACJ235S_Reg_691	Generate the report for the radio band 5 GHZ and check the details of the report	To check the report generated for radio band 5 GHZ and check details of the report	Passed	
DNACJ235S_Reg_692	Generate the report for the radio band 6 GHZ and check the details of the report	To check the report generated for radio band 6 GHZ and check details of the report	Passed	
DNACJ235S_Reg_693	Generate the report for the all radio bands and check the details of the report	To check the report generated for all radio bands and check details of the report	Passed	
DNACJ235S_Reg_694	Generate the report for the Scope is Global check the details of the report	To check the report generated for the Scope is Global and check details of the report	Passed	
DNACJ235S_Reg_695	Generate the report for the Scope for scope(multiple locations) check the details of the report	To check the report generated for the scope(multiple locations) is Global and check details of the report	Passed	
DNACJ235S_Reg_696	Generate the report for file type as CSV check the details of the report	To check the report generated for the file type as CSV and check details of the report	Passed	
DNACJ235S_Reg_697	Generate the report for file type as Tableau Data Extract check the details of the report	To check the report generated for the file type as Tableau Data Extract and check details of the report	Passed	

DNACJ235S_Reg_698	Generate the report for file type as JSON check the details of the report	To check the report generated for the file type as JSON check details of the report	Passed	
DNACJ235S_Reg_699	Generate the report for time range is last 3 hours check the details of the report	To check the report generated for time range is last 3 hours check details of the report	Passed	
DNACJ235S_Reg_700	Generate the report for time range is last 24 hours check the details of the report	To check the report generated for time range is last 24 hours check details of the report	Passed	
DNACJ235S_Reg_701	Generate the report for time range is last 7 days check the details of the report	To check the report generated for time range is last 7 days check details of the report	Passed	
DNACJ235S_Reg_702	Generate the report for time range is last 30 days check the details of the report	To check the report generated for time range is last 30 days check details of the report	Passed	
DNACJ235S_Reg_703	Generate the report for time range is custom check the details of the report	To check the report generated for time range is custom check details of the report	Passed	
DNACJ235S_Reg_704	Generate the report for Schedule is Run Now and check the details of the report	To check the report generated for Schedule is Run Now and check details of the report	Passed	
DNACJ235S_Reg_705	Generate the report for Schedule is Run Later(one-time) and check the details of the report	To check the report generated for Schedule is Run Later(one-time) and check details of the report	Passed	
DNACJ235S_Reg_706	Generate the report for Schedule is Run Recurring and check the details of the report	To check the report generated for Schedule is Run Recurring and check details of the report	Passed	

DNACJ235S_Reg_707	Generate the report with email notification and check the details of the report	To check the report with email notification and check details of the report	Passed	
DNACJ235S_Reg_708	Generate the report with webhook notification and check the details of the report	To check the report with webhook notification and check details of the report	Passed	
DNACJ235S_Reg_709	Generate the report with all radio bands and Schedule is Run Now check the details of the report	To check the report with all radio bands and Schedule is Run Now and check details of the report	Passed	
DNACJ235S_Reg_710	Generate the report with all radio bands and Scope is Global check the details of the report	To check the report with all radio bands and Scope is Global is Run Now and check details of the report	Passed	

Enhancements for mobility peer configuration

Logical ID	Title	Description	Status	Defect ID
DNACJ235S_Reg_740	Add peer to existing mobility group	Adding managed Peer into exiting mobility group. Added peers should get reflected into all existing managed peers	Passed	
DNACJ235S_Reg_741	Delete peer from existing mobility group	Deleting managed Peer into exiting mobility group. Deleted peers should get reflected into all existing managed peers	Passed	
DNACJ235S_Reg_742	Add OOB Peer into exiting mobility group.	Adding OOB Peer into exiting mobility group. Added peers should get reflected into all existing managed peers	Passed	
DNACJ235S_Reg_743	Configure multiple mobility group with same name	Verify the name applied to all the mobility group	Passed	
DNACJ235S_Reg_744	Modify the mobility group attributes	Verify the changes updated in mobility group or not	Passed	
DNACJ235S_Reg_745	Populate the mobility group attributes	Populating new mobility attributes : device Series, private IP.	Passed	
DNACJ235S_Reg_746	Verify the details in OOB page	Verify the mobility peer details shown correctly or not	Passed	
DNACJ235S_Reg_747	View the Mobility details from device.	Verify the mobility peer details from device shown correctly or not	Passed	
DNACJ235S_Reg_748	Configure the mobility group and reset the DNAC	Verify the mobility peer details after DNAC reset	Passed	

DNACJ235S_Reg_749	Configuring Mobility configuration in Controller	To verify the mobility configuration in controller	Passed	
DNACJ235S_Reg_750	Checking the Mobility configuration in DNAC	To verify whether the mobility configurations are showing or not in DNAC	Passed	
DNACJ235S_Reg_751	Changing the Mobility group name in controller-1 and check the controller's status in DNAC	To verify whether the controller status in DNAC by changing the mobility group Name.	Passed	
DNACJ235S_Reg_752	Checking the Mobility groups configuration in HA setup	To check the mobility group configurations in DNAC during HA	Passed	
DNACJ235S_Reg_753	Checking the Mobility configuration between lightweight to virtual controller in DNAC	To check whether the mobility happens between lightweight & Virtual controller	Passed	
DNACJ235S_Reg_754	Checking the mobility configuration between virtual to 9800 controller in DNAC	To check whether the mobility happens between 9800 & Virtual controller	Passed	
DNACJ235S_Reg_755	Verifying the mobility configuration with Different Radio types in DNAC	To verify whether Client is Moving between Controllers with Different Radio type or not	Passed	
DNACJ235S_Reg_756	Verifying the mobility configuration with same Radio types in DNAC	To verify whether Client is Moving between Controllers with same Radio type or not	Passed	
DNACJ235S_Reg_757	Monitoring mobility configuration in DNAC using Android Client	To verify whether the Android client details are showing in DNAC or not	Passed	

DNACJ235S_Reg_758	Monitoring mobility configuration in DNAC using iOS Client	To verify whether the iOS client details are showing in DNAC or not	Passed	
DNACJ235S_Reg_759	Monitoring mobility configuration in DNAC using Windows Client	To verify whether the Windows client details are showing in DNAC or not	Passed	
DNACJ235S_Reg_760	Monitoring mobility configuration in DNAC using MAC Client	To verify whether the MAC client details are showing in DNAC or not	Passed	
DNACJ235S_Reg_761	Add/update/delete mobility peer configuration in DNAC	To check whether the mobility Peer configurations are add/Update/delete in DNAC	Passed	

Support phase-2 Mesh configurations on wireless LAN controllers

Logical ID	Title	Description	Status	Defect ID
DNACJ235S_Reg_825	Configuring Mesh and provisioning the AP	To configure Mesh and provisioning the AP	Passed	
DNACJ235S_Reg_826	Verify Mesh AP all details in Device 360 page	To verify Mesh AP all details in Device 360 page	Passed	
DNACJ235S_Reg_827	Verify Mesh AP General Information in Device 360 page	To verify Mesh AP General Information in Device 360 page	Passed	
DNACJ235S_Reg_828	Verify Mesh AP Network Information in Device 360 page	To verify Mesh AP Network Information in Device 360 page	Passed	
DNACJ235S_Reg_829	Verify Mesh AP Rack Information in Device 360 page	To verify Mesh AP Rack Information in Device 360 page	Passed	
DNACJ235S_Reg_830	Verify Physical Neighbour Topology for RAP on Mesh AP 360 page	To verify Physical Neighbour Topology for RAP on Mesh AP 360 page	Passed	
DNACJ235S_Reg_831	Verify Physical Neighbour Topology for MAP on Mesh AP 360 page	To verify Physical Neighbour Topology for MAP on Mesh AP 360 page	Passed	
DNACJ235S_Reg_832	Verify Mesh AP tab added for MAP on AP 360 page	To verify Mesh AP tab added for MAP on AP 360 page	Passed	
DNACJ235S_Reg_833	Verify Mesh AP tab details on AP 360 page	To verify Mesh AP tab details on AP 360 page	Passed	
DNACJ235S_Reg_834	Configuring Mesh setup in 9115 AP from DNAC and verifying the same in eWLC	To configure mesh setup in 9115 AP from DNAC and check if the configuration are pushed to eWLC	Passed	

DNACJ235S_Reg_835	Configuring Mesh setup in 9120 AP from DNAC and verifying the same in eWLC	To configure mesh setup in 9120 AP from DNAC and check if the configuration are pushed to eWLC	Passed	
DNACJ235S_Reg_836	Configuring Mesh setup in 9130 AP from DNAC and verifying the same in eWLC	To configure mesh setup in 9130 AP from DNAC and check if the configuration are pushed to eWLC	Passed	
DNACJ235S_Reg_837	Configuring Mesh setup in 2800 AP from DNAC and verifying the same in eWLC	To configure mesh setup in 2800 AP from DNAC and check if the configuration are pushed to eWLC	Passed	
DNACJ235S_Reg_838	Check if the Mesh settings from DNAC is pushed into eWLC 9800-40 or not	To verify if the mesh setting done in AP from DNAC is pushed to eWLC 9800-40 or not and check all the configuration pushed from DNAC	Passed	
DNACJ235S_Reg_839	Check if the Mesh settings from DNAC is pushed into eWLC 9800-80 or not	To verify if the mesh setting done in AP from DNAC is pushed to eWLC 9800-80 or not and check all the configuration pushed from DNAC	Passed	
DNACJ235S_Reg_840	Check if the Mesh settings from DNAC is pushed into eWLC 9800-L or not	To verify if the mesh setting done in AP from DNAC is pushed to eWLC 9800-L or not and check all the configuration pushed from DNAC	Passed	

DNACJ235S_Reg_841	Check if the Mesh settings from DNAC is pushed into eWLC 9800-CL or not	To verify if the mesh setting done in AP from DNAC is pushed to eWLC 9800-CL or not and check all the configuration pushed from DNAC	Passed	
DNACJ235S_Reg_842	Connecting a Window client to the Mesh AP which is configured from DNAC	To connect a Window client to the Mesh AP which is configured from DNAC and check the behaviour and also check the AP details	Passed	
DNACJ235S_Reg_843	Connecting a Window Surface client to the Mesh AP which is configured from DNAC	To connect a Window surface client to the Mesh AP which is configured from DNAC and check the behaviour and also check the AP details	Passed	
DNACJ235S_Reg_844	Connecting a Android client to the Mesh AP which is configured from DNAC	To connect a Android client to the Mesh AP which is configured from DNAC and check the behaviour and also check the AP details	Passed	
DNACJ235S_Reg_845	Connecting a IOS client to the Mesh AP which is configured from DNAC	To connect a IOS client to the Mesh AP which is configured from DNAC and check the behaviour and also check the AP details	Passed	

DNACJ235S_Reg_846	Connecting a MAC OS client to the Mesh AP which is configured from DNAC	To connect a MAC OS client to the Mesh AP which is configured from DNAC and check the behaviour and also check the AP details	Passed	
DNACJ235S_Reg_847	Verify Mesh AP for both Bridge and Flex+Bridge Mode	To verify Mesh AP for both Bridge and Flex+Bridge Mode	Passed	
DNACJ235S_Reg_848	Verify Downstream MAPs when Mesh AP setup changes	To verify Downstream MAPs when Mesh AP setup changes	Passed	
DNACJ235S_Reg_849	Verify BGN when its name changes	To verify BGN when its name changes	Passed	
DNACJ235S_Reg_850	Verify Mesh Backhaul Channel when channel number changes	To verify Mesh Backhaul Channel when channel number changes	Passed	
DNACJ235S_Reg_851	Verify Mesh Backhaul Channel when using multiple channels	To verify Mesh Backhaul Channel when using multiple channels	Passed	
DNACJ235S_Reg_852	Verify Mesh Roles	To verify Mesh Roles	Passed	
DNACJ235S_Reg_853	Verify Path Trace on mesh AP 360 Page	To verify Path Trace on mesh AP 360 Page	Passed	
DNACJ235S_Reg_854	Verify Wi-Fi 6 Mesh AP	To verify Wi-Fi 6 Mesh AP	Passed	
DNACJ235S_Reg_855	Verify topology on Client 360 page	To verify topology on Client 360 page	Passed	
DNACJ235S_Reg_856	Test Mesh Topology related events on event viewer	To test Mesh Topology related events on event viewer	Passed	

Enable Multiple Anchor WLCs configuration for SSID

Logical ID	Title	Description	Status	Defect ID
DNACJ235S_Reg_640	Create and verify Anchor Group	To create and verify Anchor Group	Passed	
DNACJ235S_Reg_641	Edit Anchor Group	To edit Anchor Group	Passed	
DNACJ235S_Reg_642	Delete Anchor Group	To delete Anchor Group	Passed	
DNACJ235S_Reg_643	Create Anchor SSID	To create Anchor SSID	Passed	
DNACJ235S_Reg_644	Configure network profile with WLC1 as Active main, WLC2, WLC3 as Anchor with same site	To configure network profile with WLC1 as Active main, WLC2, WLC3 as Anchor with same site	Passed	
DNACJ235S_Reg_645	Configure another network profile with WLC1 as Active main, WLC2, WLC3 as Anchor with same site	To configure network profile with WLC1 as Active main, WLC2, WLC3 as Anchor with same site	Passed	
DNACJ235S_Reg_646	Create and map network profiles with different Anchor WLCs with same site	To create and map network profiles with different Anchor WLCs with same site	Passed	
DNACJ235S_Reg_647	Configure and map network profile with Anchor WLCs with different sites	To configure and map network profile with Anchor WLCs with different sites	Passed	
DNACJ235S_Reg_648	Configure and map another network profile with Anchor WLCs with different sites	To configure and map network profile with Anchor WLCs with different sites	Passed	
DNACJ235S_Reg_649	Configure and map different network profiles with Anchor WLCs with different sites	To configure and map different network profiles with Anchor WLCs with different sites	Passed	

DNACJ235S_Reg_650	Configure and map network profiles with Anchor WLCs with different sites	To configure and map network profiles with Anchor WLCs with different sites	Passed	
DNACJ235S_Reg_651	Configure and map network profiles with Anchor WLCs with different sites	To configure and map network profiles with Anchor WLCs with different sites	Passed	
DNACJ235S_Reg_652	Create and map network profiles with different Anchor WLCs (9800-40, 9800-80, 9800-CL) with same site	To create and map network profiles with different Anchor WLCs (9800-40, 9800-80, 9800-CL) with same site	Passed	
DNACJ235S_Reg_653	Configure and map network profile with Anchor WLCs (9800-40, 9800-80, 9800-CL) with different sites	To configure and map network profile with Anchor WLCs (9800-40, 9800-80, 9800-CL) with different sites	Passed	
DNACJ235S_Reg_654	Create and map network profiles with different Anchor WLCs (9800 HA setups) with same site	To create and map network profiles with different Anchor WLCs (9800 HA setups) with same site	Passed	
DNACJ235S_Reg_655	Configure and map network profile with Anchor WLCs (9800 HA setups) with different sites	To configure and map network profile with Anchor WLCs (9800 HA setups) with different sites	Passed	

Support for manually disabling clients on wireless controller

Logical ID	Title	Description	Status	Defect ID
DNACJ235S_Reg_762	Listing of manual Disabled Clients	To Verify manual disabled clients details listed or not	Passed	
DNACJ235S_Reg_763	Add Manual Disabled Clients/Exclusion Clients option	To Verify manual disabled clients added or not	Passed	
DNACJ235S_Reg_764	Edit Manual Disabled Clients/Exclusion Clients option	To Verify manual disabled clients details edited or not	Passed	
DNACJ235S_Reg_765	Delete manual disabled clients	To Verify Manual disabled client details deleted or not	Passed	
DNACJ235S_Reg_766	Add Manual Disabled Clients to WLC option	To Verify Manual disabled clients added using WLC option or not	Passed	
DNACJ235S_Reg_767	Upload Manual disable clients details using CSV	To Verify Manual disabled clients details Uploaded or not using CSV file	Passed	
DNACJ235S_Reg_768	Check the format of MAC address.	To Verify the supported MAC format	Passed	
DNACJ235S_Reg_769	Validate the manual disable client details in Client 360 page	To Verify the manual disable client details in client 360 page.	Passed	
DNACJ235S_Reg_770	Add unreachable device and check the status	To Verify unreachable device added or not.	Passed	
DNACJ235S_Reg_771	Import bulk clients MACs to exclusion list.	To Verify able to import bulk clients MACs to exclusion list.	Passed	

Top N Site - SLA Dashboard - Client KPIs

Logical ID	Title	Description	Status	Defect ID
DNACJ235S_Reg_788	Verify the values for Coverage, Onboarding, Roaming, and Connection speed on the Site Analytics section of the Overall Health Page for 24 hrs	To verify the values for Coverage, Onboarding, Roaming, and Connection speed on the Site Analytics section of the Overall Health Page for 24 hrs	Passed	
DNACJ235S_Reg_789	Verify the values for Coverage, Onboarding, Roaming, and Connection speed on the Site Analytics section of the Overall Health Page for 3 hrs	To verify the values for Coverage, Onboarding, Roaming, and Connection speed on the Site Analytics section of the Overall Health Page for 3 hrs	Passed	
DNACJ235S_Reg_790	Verify the values for Coverage, Onboarding, Roaming, and Connection speed on the Site Analytics section of the Overall Health Page for 7 days	To verify the values for Coverage, Onboarding, Roaming, and Connection speed on the Site Analytics section of the Overall Health Page for 7 hrs	Passed	
DNACJ235S_Reg_791	Verify the values for Coverage, Onboarding, Roaming, and Connection speed on the Site Analytics section of the Overall Health Page for previous day-24hrs	To verify the values for Coverage, Onboarding, Roaming, and Connection speed on the Site Analytics section of the Overall Health Page for previous day 24hrs	Passed	

DNACJ235S_Reg_792	Verify the values for Coverage, Onboarding, Roaming, and Connection speed on the Site Analytics section of the Overall Health Page for previous day -3 hrs	To verify the values for Coverage, Onboarding, Roaming, and Connection speed on the Site Analytics section of the Overall Health Page for previous day 3 hrs	Passed	
DNACJ235S_Reg_793	Verify the values for Coverage, Onboarding, Roaming, and Connection speed on the Site Analytics section of the Overall Health Page for previous day- 7 days	To verify the values for Coverage, Onboarding, Roaming, and Connection speed on the Site Analytics section of the Overall Health Page for previous day -7 days	Passed	
DNACJ235S_Reg_794	View Site Analytics Link on the Site Analytics section of the Overall Health Page	To view Site Analytics Link on the Site Analytics section of the Overall Health Page	Passed	
DNACJ235S_Reg_795	Info Icons on the Site Analytics section of the Overall Health Page	To view the Info Icons on the Site Analytics section of the Overall Health Page	Passed	
DNACJ235S_Reg_796	Site Matrix KPI % values for 24 hrs on the Site Analytics Map	To view Site Matrix KPI % values for 24 hrs on the Site Analytics Map	Passed	
DNACJ235S_Reg_797	Site Matrix KPI % values for 3 hrs on the Site Analytics Map	To view Site Matrix KPI % values for 3 hrs on the Site Analytics Map	Passed	
DNACJ235S_Reg_798	Site Matrix KPI % values for 7 days on the Site Analytics Map	To view Site Matrix KPI % values for 7 days on the Site Analytics Map	Passed	
DNACJ235S_Reg_799	Site Matrix KPI % values for Previous 3 hrs on the Site Analytics Map	To view Site Matrix KPI % values for Previous 3 hrs on the Site Analytics Map	Passed	

DNACJ235S_Reg_800	Site Matrix KPI % values for Previous 24 hrs on the Site Analytics Map	To view Site Matrix KPI % values for Previous 24 hrs on the Site Analytics Map	Passed	
DNACJ235S_Reg_801	Site Matrix KPI % values for Previous 7 days on the Site Analytics Map	To view Site Matrix KPI % values for Previous 7 days on the Site Analytics Map	Passed	
DNACJ235S_Reg_802	Metric violations count for KPI % values on the Site Analytics Map	To view metric violations count for KPI % values on the Site Analytics Map	Passed	
DNACJ235S_Reg_803	Color Scheme for KPI % values on the Site Analytics Map	To view Color Scheme for KPI % values on the Site Analytics Map	Passed	
DNACJ235S_Reg_804	Check whether Info Icons on the Site Analytics Map is shown correct	To check whether Info Icons on the Site Analytics Map is shown correct	Passed	

Support tri radio configuration on Access Points

Logical ID	Title	Description	Status	Defect ID
DNACJ235S_Reg_805	Configure Dual radio mode as "Enabled" with Radio role as Client serving	To Verify dual radio role enabled or not	Passed	
DNACJ235S_Reg_806	Configure Dual radio mode as "Auto"	To Verify dual radio role mode configured as auto or not	Passed	
DNACJ235S_Reg_807	Configure Dual radio mode as "Disabled"	To verify dual radio mode disabled or not	Passed	
DNACJ235S_Reg_808	Configure Dual radio mode as "Enabled" with Radio role as "Monitor"	To verify dual radio mode role configured as monitor or not	Passed	
DNACJ235S_Reg_809	Configure Dual radio mode as "Enabled" with Radio role as "Auto"	To verify dual radio mode role configured as auto or not	Passed	
DNACJ235S_Reg_810	Verify the slot-1 & slot-2's Radio role assignment and admin status's are independent of each other	To verify role assignment and admin status for slots	Passed	
DNACJ235S_Reg_811	Verify that slot-1 & slot-2 can have a max channel width of 80 MHz each when dual-radio mode is enabled with client serving mode	To verify max channel width of each slots	Passed	
DNACJ235S_Reg_812	Verify the error handling when global tri-radio is disabled on WLC and dual radio mode is enabled form workflow	To verify error handling while global radio option is disabled	Passed	

DNACJ235S_Reg_813	Verify the View Devices in tri-radio page	To validate the details of tri radio mode in tri radio page	Passed	
DNACJ235S_Reg_814	Verify Dual radio mode cannot be enabled on an AP when it is in Monitor mode	To verify dual mode enabled or not during ap in monitor mode	Passed	
DNACJ235S_Reg_815	Verify Dual radio mode cannot be enabled on an AP when it is in Sniffer mode	To verify dual mode enabled or not when ap in sniffer mode	Passed	
DNACJ235S_Reg_816	Verify the same channel configuration on slot-1 & Slot-2 when dual radio mode is enabled	To verify channel configuration when dual mode enabled	Passed	
DNACJ235S_Reg_817	Verify AP Reprovision after the Dual-radio mode is disabled on it from the AP config workflow	Verify the dual mode config enabled or not after ap reprovision	Passed	
DNACJ235S_Reg_818	Verify AP Reprovision after the Dual-radio mode is enabled on it from the AP config workflow	Verify the dual mode config disabled or not after ap reprovision	Passed	
DNACJ235S_Reg_819	Verify AP re-provision after Dual-radio mode is enabled and radio role is in auto or monitor	To verify dual mode role as auto or not after ap re-provisioning	Passed	
DNACJ235S_Reg_820	Triradio admin status from recurring flow on supported Aps	To verify admin status recurring flow on supported aps	Passed	
DNACJ235S_Reg_821	Verify the recurring tasks scheduled to run periodically, runs correctly after upgrade	To verify recurring tasks runs correctly or not based on schedule	Passed	

DNACJ235S_Reg_822	Verify the Open RRM functionality with Tri radio Aps after the dual-radio mode is enabled	To verify Open RRM functionality after dual mode radio enabled	Passed	
DNACJ235S_Reg_823	Verify enabling the Dual-radio mode on the APs on a DNAC upgraded from Guardian to Groot release	To verify dual mode after DNAC upgradation	Passed	
DNACJ235S_Reg_824	Verify enabling the Dual-radio mode on the APs on a DNAC upgraded from Frey to Groot release	Verify dual mode radio after DANC upgrade to frey to groot	Passed	

Support for CCKM configuration on SSID

Logical ID	Title	Description	Status	Defect ID
DNACJ235S_Reg_711	Validate enable CCKM is applicable only for WPA2 or WPA2+WPA3 security in WLAN and provision to eWLC/eWC devices	To validate enable CCKM is applicable only for WPA2 or WPA2+WPA3 security in WLAN and provision to eWLC/eWC devices	Passed	
DNACJ235S_Reg_712	Validate Edit disable CCKM is applicable only for WPA2 or WPA2+WPA3 security in WLAN and provision to eWLC/eWC devices	To validate Edit disable CCKM is applicable only for WPA2 or WPA2+WPA3 security in WLAN and provision to eWLC/eWC devices	Passed	
DNACJ235S_Reg_713	Validate CCKM option is not applicable only for PSK/open and open-secured security in WLAN and provision to eWLC/eWC devices	To validate CCKM option is not applicable only for PSK/open and open-secured security in WLAN and provision to eWLC/eWC devices	Passed	
DNACJ235S_Reg_714	Validate time stamp tolerance range for CCKM and provision to eWLC/eWC devices	To validate time stamp tolerance range for CCKM and provision to eWLC/eWC devices	Passed	
DNACJ235S_Reg_715	Validate edit time stamp tolerance range for CCKM and provision to eWLC/eWC devices	To validate edit time stamp tolerance range for CCKM and provision to eWLC/eWC devices	Passed	
DNACJ235S_Reg_716	Validate enable CCKM is applicable only for WPA2 or WPA2+WPA3 security in WLAN with FT enabled and provision to eWLC/eWC devices	To validate enable CCKM is applicable only for WPA2 or WPA2+WPA3 security in WLAN with FT enabled and provision to eWLC/eWC devices	Passed	

DNACJ235S_Reg_717	Validate Audit log WLAN with CCKM details/Time stamp are shown in audit log after provision of eWLC/eWC devices	To validate Audit log WLAN with CCKM details/Time stamp are shown in audit log after provision of eWLC/eWC devices	Passed	
DNACJ235S_Reg_718	Validate configuration preview scenario for CCKM with time stamp and provision to eWLC/eWC devices	To validate configuration preview scenario for CCKM with time stamp and provision to eWLC/eWC devices	Passed	
DNACJ235S_Reg_719	Add Advanced SSID Model Config WLAN parameters with CCKM and provision to eWLC/eWC devices	To add Advanced SSID Model Config WLAN parameters with CCKM and provision to eWLC/eWC devices	Passed	
DNACJ235S_Reg_720	Validate WLAN with CCKM and Time stamp tolerance details are shown in SSID summary page	To validate WLAN with CCKM and Time stamp tolerance details are shown in SSID summary page	Passed	
DNACJ235S_Reg_721	Validate WLAN with CCKM and Time stamp tolerance details are shown in during provision summary of eWLC/eWC devices summary page	To validate WLAN with CCKM and Time stamp tolerance details are shown in during provision summary of eWLC/eWC devices summary page	Passed	
DNACJ235S_Reg_722	Validate Provision results shows for CCKM and provision to eWLC/eWC devices	To validate Provision results shows for CCKM and provision to eWLC/eWC devices	Passed	
DNACJ235S_Reg_723	Validate WLAN with time stamp tolerance are allowed to edit in site over-ride configuration and provision to eWLC/eWC devices	To validate WLAN with time stamp tolerance are allowed to edit in site over-ride configuration and provision to eWLC/eWC devices	Passed	

DNACJ235S_Reg_724	Validate WLAN with CCKM are allowed to edit in site over-ride configuration and provision eWLC/eWC devices	To validate WLAN with CCKM are allowed to edit in site over-ride configuration and provision eWLC/eWC devices	Passed	
DNACJ235S_Reg_725	Validate compliance for time stamp tolerance and provision to eWLC/eWC devices	To validate compliance for time stamp tolerance and provision to eWLC/eWC devices	Passed	
DNACJ235S_Reg_726	Validate compliance for CCKM and provision to eWLC/eWC devices	To validate compliance for CCKM and provision to eWLC/eWC devices	Passed	
DNACJ235S_Reg_727	Validate Brownfield for CCKM and provision to eWLC/eWC devices	To validate Brownfield for CCKM and provision to eWLC/eWC devices	Passed	
DNACJ235S_Reg_728	Validate Brownfield for time stamp tolerance and provision to eWLC/eWC devices	To validate Brownfield for time stamp tolerance and provision to eWLC/eWC devices	Passed	
DNACJ235S_Reg_729	Configure WLAN with CCKM with flexconnect SSID and provision to eWLC/eWC devices	To configure WLAN with CCKM with flexconnect SSID and provision to eWLC/eWC devices	Passed	
DNACJ235S_Reg_730	Configure WLAN with CCKM with fabric SSID and provision to eWLC/eWC devices	To configure WLAN with CCKM with fabric SSID and provision to eWLC/eWC devices	Passed	
DNACJ235S_Reg_731	Backup and restore with CCKM enabled/disabled and time stamp and provision to eWLC/eWC devices	To do backup and restore with CCKM enabled/disabled and time stamp and provision to eWLC/eWC devices	Passed	

DNACJ235S_Reg_732	Backup and restore at site level over-ride and provision to eWLC/eWC devices	To do backup and restore at site level over-ride and provision to eWLC/eWC devices	Passed	
DNACJ235S_Reg_733	Validate Windows Client connect with CCKM	To validate Windows Client connect with CCKM	Passed	
DNACJ235S_Reg_734	Validate Android Client connect with CCKM	To validate Android Client connect with CCKM	Passed	
DNACJ235S_Reg_735	Validate MAC Client connect with CCKM	To validate MAC Client connect with CCKM	Passed	
DNACJ235S_Reg_736	Validate IOS Client connect with CCKM	To validate IOS Client connect with CCKM	Passed	
DNACJ235S_Reg_737	Validate Surface Go Client connect with CCKM	To validate Surface Go Client connect with CCKM	Passed	
DNACJ235S_Reg_738	Validate Client roam with CCKM	To validate Client roam with CCKM	Passed	
DNACJ235S_Reg_739	Validate event viewer of client page shows CCKM authentication type	To validate event viewer of client page shows CCKM authentication type	Passed	

Client Global Events viewer

Logical ID	Title	Description	Status	Defect ID
DNACJ235S_Reg_772	Configuring DNAC with Network devices, clients, access points.	To configure DNAC with Network devices, clients, access points.	Passed	
DNACJ235S_Reg_773	Making the 9800-L eWLC down which is added in DNAC	To make the eWLC 9800-80 down which is added in DNAC and verify if the	Passed	
DNACJ235S_Reg_774	Making the 9800-CL eWLC down which is added in DNAC	To make the eWLC 9800-80 down which is added in DNAC and verify if the	Passed	
DNACJ235S_Reg_775	Making the 2.4GHz of 9105 AP radio down and check if the logs showing in DNAC	To make the 2.4GHz of 9105 AP radio down of the AP which is connected to eWLC	Passed	
DNACJ235S_Reg_776	Making the 2.4GHz of 9115 AP radio down and check if the logs showing in DNAC	To make the 2.4GHz of 9115 AP radio down of the AP which is connected to eWLC	Passed	
DNACJ235S_Reg_777	Making the 2.4GHz of 9120 AP radio down and check if the logs showing in DNAC	To make the 2.4GHz of 9120 AP radio down of the AP which is connected to eWLC	Passed	
DNACJ235S_Reg_778	Making the 2.4GHz of 9130 AP radio down and check if the logs showing in DNAC	To make the 2.4GHz of 9130 AP radio down of the AP which is connected to eWLC	Passed	
DNACJ235S_Reg_779	Making the 5GHz of 9105 AP radio down and check if the logs showing in DNAC	To make the 5GHz of 9105 AP radio down of the AP which is connected to eWLC	Passed	

DNACJ235S_Reg_780	Making the 5GHz of 9115 AP radio down and check if the logs showing in DNAC	To make the 5GHz of 9115 AP radio down of the AP which is connected to eWLC	Passed	
DNACJ235S_Reg_781	Making the 5GHz of 9120 AP radio down and check if the logs showing in DNAC	To make the 5GHz of 9120 AP radio down of the AP which is connected to eWLC	Passed	
DNACJ235S_Reg_782	Making the 5GHz of 9130 AP radio down and check if the logs showing in DNAC	To make the 5GHz of 9130 AP radio down of the AP which is connected to eWLC	Passed	
DNACJ235S_Reg_783	Disconnecting a 9105 AP from eWLC	To disconnect a 9105 AP from eWLC and verify the same in the Issues & Events	Passed	
DNACJ235S_Reg_784	Disconnecting a 9115 AP from eWLC	To disconnect a 9115 AP from eWLC and verify the same in the Issues & Events	Passed	
DNACJ235S_Reg_785	Disconnecting a 9120 AP from eWLC	To disconnect a 9120 AP from eWLC and verify the same in the Issues & Events	Passed	
DNACJ235S_Reg_786	Disconnecting a 9130 AP from eWLC	To disconnect a 9105 AP from eWLC and verify the same in the Issues & Events	Passed	
DNACJ235S_Reg_787	Making the 9800-80 eWLC down which is added in DNAC	To make the eWLC 9800-80 down which is added in DNAC and verify if the	Passed	

Troubleshooting tab on AP-360

Logical ID	Title	Description	Status	Defect ID
DNACJ235S_Reg_579	Add network devices like switches, Controllers to DNAC and check if the network devices gets added to DNAC or not	To add network devices like switches, Controllers to DNAC and check if the network devices gets added to DNAC or not	Passed	
DNACJ235S_Reg_580	Configuring DNAC with Network devices, clients, access points.	To configure DNAC with Network devices, clients, access points.	Passed	
DNACJ235S_Reg_581	Check 9130 AP whether able to monitor Ping Tool in AP 360	To check 9130 AP whether able to monitor Ping Tool in AP 360	Passed	
DNACJ235S_Reg_582	Check 9120 AP whether able to monitor Ping Tool in AP 360	To check 9120 AP whether able to monitor Ping Tool in AP 360	Passed	
DNACJ235S_Reg_583	Check 9105 AP whether able to monitor Ping Tool in AP 360	To check 9105 AP whether able to monitor Ping Tool in AP 360	Passed	
DNACJ235S_Reg_584	Check 9115 AP whether able to monitor Ping Tool in AP 360	To check 9115 AP whether able to monitor Ping Tool in AP 360	Passed	
DNACJ235S_Reg_585	Check 9130 AP whether able to monitor Path trace Tool in AP 360	To check 9130 AP whether able to monitor Path trace Tool in AP 360	Passed	
DNACJ235S_Reg_586	Check 9115 AP whether able to monitor Path trace Tool in AP 360	To check 9115 AP whether able to monitor Path trace Tool in AP 360	Passed	
DNACJ235S_Reg_587	Check 9105 AP whether able to monitor Path trace Tool in AP 360	To check 9105 AP whether able to monitor Path trace Tool in AP 360	Passed	

DNACJ235S_Reg_588	Check 9120 AP whether able to monitor Path trace Tool in AP 360	To check 9120 AP whether able to monitor Path trace Tool in AP 360	Passed	
DNACJ235S_Reg_589	Check whether able to monitor live Traffic -Path trace Tool in AP 360	To check whether able to monitor live Traffic -Path trace Tool in AP 360	Passed	
DNACJ235S_Reg_590	Check 9130 AP whether able to monitor Trace Route Tool in AP 360	To check 9130 AP whether able to monitor Trace Route Tool in AP 360	Passed	
DNACJ235S_Reg_591	Check 9120 AP whether able to monitor Trace Route Tool in AP 360	To check 9120 AP whether able to monitor Trace Route Tool in AP 360	Passed	
DNACJ235S_Reg_592	Check 9105 AP whether able to monitor Trace Route Tool in AP 360	To check 9105 AP whether able to monitor Trace Route Tool in AP 360	Passed	
DNACJ235S_Reg_593	Check 9115 AP whether able to monitor Trace Route Tool in AP 360	To check 9115 AP whether able to monitor Trace Route Tool in AP 360	Passed	
DNACJ235S_Reg_594	Device Action for 9130 AP as Rebooting AP in AP 360 Tools	To device Action for 9130 AP as Rebooting AP in AP 360 Tools	Passed	
DNACJ235S_Reg_595	Device Action for 9115 AP as Rebooting AP in AP 360 Tools	To device Action for 9115 AP as Rebooting AP in AP 360 Tools	Passed	
DNACJ235S_Reg_596	Device Action for 9105 AP as Rebooting AP in AP 360 Tools	To device Action for 9105 AP as Rebooting AP in AP 360 Tools	Passed	
DNACJ235S_Reg_597	Device Action for 9120 AP as Rebooting AP in AP 360 Tools	To device Action for 9120 AP as Rebooting AP in AP 360 Tools	Passed	
DNACJ235S_Reg_598	Device Action for 9130 AP as Flash Led blink Forever in AP 360 Tools	To device Action for 9130 AP as Flash Led blink Forever in AP 360 Tools	Passed	

DNACJ235S_Reg_599	Device Action for 9120 AP as Flash Led blink Forever in AP 360 Tools	To device Action for 9120 AP as Flash Led blink Forever in AP 360 Tools	Passed	
DNACJ235S_Reg_600	Device Action for 9105 AP as Flash Led blink Forever in AP 360 Tools	To device Action for 9105 AP as Flash Led blink Forever in AP 360 Tools	Passed	
DNACJ235S_Reg_601	Device Action for 9115 AP as Flash Led blink Forever in AP 360 Tools	To device Action for 9115 AP as Flash Led blink Forever in AP 360 Tools	Passed	
DNACJ235S_Reg_602	Device Action for 9130 AP as Flash Led Stop blinking AP 360 Tools	To device Action for 9130 AP as Flash Led Stop blinking AP 360 Tools	Passed	
DNACJ235S_Reg_603	Device Action for 9115 AP as Flash Led Stop blinking AP 360 Tools	To device Action for 9115 AP as Flash Led Stop blinking AP 360 Tools	Passed	
DNACJ235S_Reg_604	Device Action for 9105 AP as Flash Led Stop blinking AP 360 Tools	To device Action for 9105 AP as Flash Led Stop blinking AP 360 Tools	Passed	
DNACJ235S_Reg_605	Device Action for 9120 AP as Flash Led Stop blinking AP 360 Tools	To device Action for 9120 AP as Flash Led Stop blinking AP 360 Tools	Passed	
DNACJ235S_Reg_606	Check whether able to reset Radio 0 for 2.4 GHz in AP 360 tools	To check whether able to reset Radio 0 for 2.4 GHz in AP 360 tools	Passed	
DNACJ235S_Reg_607	Check whether able to reset Radio 1 for 5 GHz in AP 360 tools	To check whether able to reset Radio 1 for 5 GHz in AP 360 tools	Passed	
DNACJ235S_Reg_608	Check whether able to reset Radio 2 for 5 GHz in AP 360 tools	To check whether able to reset Radio 2 for 5 GHz in AP 360 tools	Passed	

Channel Utilization Breakout

Logical ID	Title	Description	Status	Defect ID
DNACJ235S_Reg_609	Check Rx/Tx details on AP 360 page	To check Rx/Tx details on AP 360 page	Passed	
DNACJ235S_Reg_610	Check interference details on AP 360 page	To check interference details on AP 360 page	Passed	
DNACJ235S_Reg_611	Check utilization breakout chart for 9105 AP	To check utilization breakout chart for 9105 AP	Passed	
DNACJ235S_Reg_612	Check utilization breakout chart for 9115 AP	To check utilization breakout chart for 9115 AP	Passed	
DNACJ235S_Reg_613	Check utilization breakout chart for 9120 AP	To check utilization breakout chart for 9120 AP	Passed	
DNACJ235S_Reg_614	Check utilization breakout chart for 9130 AP	To check utilization breakout chart for 9130 AP	Passed	
DNACJ235S_Reg_615	Check utilization breakout chart for 4800 AP	To check utilization breakout chart for 4800 AP	Passed	
DNACJ235S_Reg_616	Check details of connected clients to 5Ghz bands.	To check details of connected clients to 5Ghz bands.	Passed	
DNACJ235S_Reg_617	Check details of connected clients to 2.4Ghz bands.	To check details of connected clients to 2.4Ghz bands.	Passed	
DNACJ235S_Reg_618	Check device details with bad health in generated chart.	To check device details with bad health in generated chart.	Passed	
DNACJ235S_Reg_619	Check utilization breakout chart for Windows client	To check utilization breakout chart for Windows client	Passed	
DNACJ235S_Reg_620	Check utilization breakout chart for Android client	To check utilization breakout chart for Android client	Passed	

DNACJ235S_Reg_621	Check utilization breakout chart for MAC client	To check utilization breakout chart for MAC client	Passed	
DNACJ235S_Reg_622	Check utilization breakout chart for Iphone client	To check utilization breakout chart for Iphone client	Passed	
DNACJ235S_Reg_623	Check utilization breakout chart for roaming client	To check utilization breakout chart for roaming client	Passed	

Issues correlation[AP-down issue]

Logical ID	Title	Description	Status	Defect ID
DNACJ235S_Reg_624	Join Network devices to DNAC	To join Network devices to DNAC	Passed	
DNACJ235S_Reg_625	Make a 9105 AP down and check whether AP Down issue notification is seen in issue page	To make a 9105 AP down and check whether AP Down issue notification is seen in issue page	Passed	
DNACJ235S_Reg_626	Make a 9115 AP down and check whether AP Down issue notification is seen in issue page	To make a 9115 AP down and check whether AP Down issue notification is seen in issue page	Passed	
DNACJ235S_Reg_627	Make a 9120 AP down and check whether AP Down issue notification is seen in issue page	To make a 9120 AP down and check whether AP Down issue notification is seen in issue page	Passed	
DNACJ235S_Reg_628	Make a 9130 AP down and check whether AP Down issue notification is seen in issue page	To make a 9130 AP down and check whether AP Down issue notification is seen in issue page	Passed	
DNACJ235S_Reg_629	Make a 9105 AP down and check whether AP Down issue notification is seen in device 360	To make a 9105 AP down and check whether AP Down issue notification is seen in Device 360	Passed	
DNACJ235S_Reg_630	Make a 9115 AP down and check whether AP Down issue notification is seen in device 360	To make a 9115 AP down and check whether AP Down issue notification is seen in Device 360	Passed	
DNACJ235S_Reg_631	Make a 9120 AP down and check whether AP Down issue notification is seen in device 360	To make a 9120 AP down and check whether AP Down issue notification is seen in Device 360	Passed	

DNACJ235S_Reg_632	Make a 9130 AP down and check whether AP Down issue notification is seen in device 360	To make a 9130 AP down and check whether AP Down issue notification is seen in Device 360	Passed	
DNACJ235S_Reg_633	Make Several Aps connected to a single switch down and check all the ap down issue notification is shown as a single notification or not	To make Several Aps connected to a single switch down and check all the ap down issue notification is shown as a single notification or not	Passed	
DNACJ235S_Reg_634	Make Several Aps connected to different switch down and check whether the ap down notification is seen based on switch or not	To make Several Aps connected to different switch down and check whether the ap down notification is seen based on switch or not	Passed	
DNACJ235S_Reg_635	Check whether able to export the issue from issues & Events page	To check whether able to export the issue from issues & Events page	Passed	
DNACJ235S_Reg_636	Check Problem details, Impact details and suggested actions of the issue from Issue & Event page	To check Problem details, Impact details and suggested actions of the issue from issue and event page	Passed	
DNACJ235S_Reg_637	Check whether able to export the issue from Device 360	To check whether able to export the issue from Device 360	Passed	
DNACJ235S_Reg_638	Check Problem details, Impact details and suggested actions of the issue from Device 359	To check Problem details, Impact details and suggested actions of the issue from Device 359	Passed	
DNACJ235S_Reg_639	Check whether the issues are auto resolved when the ap comes to up state	To check whether the issues are auto resolved when the ap comes to up state	Passed	

Support custom WLAN profile configuration from DNAC

Logical ID	Title	Description	Status	Defect ID
DNACJ235S_Reg_656	Validate no of characters and special characters in custom WLAN and policy Profile name	To validate no of characters and special characters in custom WLAN and policy Profile name	Passed	
DNACJ235S_Reg_657	Configure WLAN with custom WLAN profile name, policy profile name and provision to ewlc controller	To configure WLAN with custom WLAN profile name, policy profile name and provision to ewlc controller	Passed	
DNACJ235S_Reg_658	Edit WLAN parameters with custom WLAN/policy profile name and provision to ewlc controller	To edit WLAN parameters with custom WLAN/policy profile name and provision to ewlc controller	Passed	
DNACJ235S_Reg_659	Edit WLAN Flavors with custom WLAN/ policy profile name and provision to ewlc controller	To edit WLAN Flavors with custom WLAN/ policy profile name and provision to ewlc controller	Passed	
DNACJ235S_Reg_660	Edit SSID with same wlan profile at Global and map it to a another network profile NP2 with flex connect to non flex and re-provision to controller	To edit SSID with same wlan profile at Global and map it to a another network profile NP2 with flex connect to non flex and re-provision to controller	Passed	
DNACJ235S_Reg_661	Edit SSID with same wlan profile at Global and map it to a another network profile NP2 with interface change and re-provision to controller	To edit SSID with same wlan profile at Global and map it to a another network profile NP2 with interface change and re-provision to controller	Passed	

DNACJ235S_Reg_662	Edit SSID with different wlan profile at Global and map it to a another network profile NP2 with interface change and re-provision to controller	To edit SSID with different wlan profile at Global and map it to a another network profile NP2 with interface change and re-provision to controller	Passed	
DNACJ235S_Reg_663	Remove wlan from Network profile and re-provision to controller	To remove wlan from Network profile and re-provision to controller	Passed	
DNACJ235S_Reg_664	Over-ride SSID with same wlan profile name and re-provision to controller	To over-ride SSID with same wlan profile name and re-provision to controller	Passed	
DNACJ235S_Reg_665	Over-ride SSID with different wlan profile name and re-provision to controller	To over-ride SSID with different wlan profile name and re-provision to controller	Passed	
DNACJ235S_Reg_666	Over-ride SSID with different wlan profile name in floor level and re-provision to controller	To over-ride SSID with different wlan profile name in floor level and re-provision to controller	Passed	
DNACJ235S_Reg_667	Over-ride SSID with different wlan profile name with different wlan parameters and re-provision to controller	To over-ride SSID with different wlan profile name with different wlan parameters and re-provision to controller	Passed	
DNACJ235S_Reg_668	Edit SSID with new wlan profile name and re-provision to controller and validate delete of previously created wlan	To edit SSID with new wlan profile name and re-provision to controller and validate delete of previously created wlan	Passed	

DNACJ235S_Reg_669	Brownfield Learn controller with different wlan profile name and provision to controller	To brownfield Learn controller with different wlan profile name and provision to controller	Passed	
DNACJ235S_Reg_670	Brownfield Learn the controller with 2 Policy Tags(with APs) mapped to same wlanprofile and but different policyprofilenames	To brownfield Learn the controller with 2 Policy Tags(with APs) mapped to same wlanprofile and but different policyprofilenames	Passed	
DNACJ235S_Reg_671	Brownfield Learn the controller with 2 Policy Tags(with APs) mapped to same different wlanprofiles and but same policyprofilename	To brownfield Learn the controller with 2 Policy Tags(with APs) mapped to same different wlanprofiles and but same policyprofilename	Passed	
DNACJ235S_Reg_672	Validate WLAN with custom WLAN profile name and policy profile name details are shown in SSID summary page	To validate WLAN with custom WLAN profile name and policy profile name details are shown in SSID summary page	Passed	
DNACJ235S_Reg_673	Validate WLAN with custom WLAN profile name and policy profile name details are shown in during provision of ewlc summary page	To validate WLAN with custom WLAN profile name and policy profile name details are shown in during provision of ewlc summary page	Passed	
DNACJ235S_Reg_674	Validate Audit log WLAN with custom WLAN profile name and policy profile name details are shown in audit log after provision of ewlc	To validate Audit log WLAN with custom WLAN profile name and policy profile name details are shown in audit log after provision of ewlc	Passed	

DNACJ235S_Reg_675	Validate WLAN with custom WLAN profile name and policy profile name are shown in 360 view of ewlc controller	To validate WLAN with custom WLAN profile name and policy profile name are shown in 360 view of ewlc controller	Passed	
DNACJ235S_Reg_676	Validate N+1 scenario for custom WLAN profile name/Policy profile name and provision to ewlc controller	To validate N+1 scenario for custom WLAN profile name/Policy profile name and provision to ewlc controller	Passed	
DNACJ235S_Reg_677	Validate configuration preview scenario for custom WLAN profile name/Policy profile name and provision to ewlc controller	To validate configuration preview scenario for custom WLAN profile name/Policy profile name and provision to ewlc controller	Passed	
DNACJ235S_Reg_678	Validate Provision results shows for custom WLAN profile name/Policy profile name and provision to ewlc controller	To validate Provision results shows for custom WLAN profile name/Policy profile name and provision to ewlc controller	Passed	CSCwd68761
DNACJ235S_Reg_679	Validate compliance for custom WLAN profile name/Policy profile name and provision to ewlc controller	To validate compliance for custom WLAN profile name/Policy profile name and provision to ewlc controller	Passed	
DNACJ235S_Reg_680	Validate Upgrade and configure WLAN with custom WLAN profile name, policy profile name and provision to ewlc controller	To validate Upgrade and configure WLAN with custom WLAN profile name, policy profile name and provision to ewlc controller	Passed	

Client Detail Report Enhancements - Device Analytics Insights

Logical ID	Title	Description	Status	Defect ID
DNACJ235S_Reg_681	Generate the client detail report as PDF format and check the details of the device.	To Check the report generated as PDF format or not and to check the details of the device.	Passed	
DNACJ235S_Reg_682	Generate the client detail report as CSV format and check the details of the device.	To Check the report generated as CSV format or not and to check the details of the device.	Passed	
DNACJ235S_Reg_683	Generate the client detail report as TDE format and check the details of the device.	To Check the report generated as TDE format or not and to check the details of the device.	Passed	
DNACJ235S_Reg_684	Generate the client detail report with schedule time as now and check the details of the device.	To Check the report generated in schedule now time and to check the details of the device.	Passed	
DNACJ235S_Reg_685	Generate the client detail report with schedule time as Run later and check the details of the device.	To Check the report generated in schedule later time and to check the details of the device.	Passed	
DNACJ235S_Reg_686	Generate the client detail report with schedule time as Run Recurring option and check the details of the device.	To Check the report generated in schedule recurring time and to check the details of the device.	Passed	
DNACJ235S_Reg_687	Generate the client detail report with email notification and check the details of the device.	To Verify the notification generated or not with valid report details and to check the details of the device.	Passed	

DNACJ235S_Reg_688	Generate the client detail report with webhook notification and check the details of the device.	To Verify the notification generated or not with valid report details and to check the details of the device.	Passed	
DNACJ235S_Reg_689	Generate the client detail report after deleted all the devices in DNAC	To validate the report details shown or not after deleted the device in DNAC	Passed	

Config Wireless

Logical ID	Title	Description	Status	Defect ID
DNACJ235S_Config_1	Templates Hub: New Project/Template close button shows at templates home page	Templates Hub: New Project/Template close button shows at templates home page	Passed	CSCwd51141



Related Documents

- [Related Documentation, on page 176](#)

Related Documentation

Cisco Catalyst 9800 Series Wireless Controller Software Configuration Guide

https://www.cisco.com/c/en/us/td/docs/wireless/controller/9800/17-10/config-guide/b_wl_17_10_cg.html

Cisco Catalyst 9800 Series Wireless Controller 17.10 Configuration Guide

https://www.cisco.com/c/en/us/td/docs/wireless/controller/9800/17-10/config-guide/b_wl_17_10_cg.html

Cisco Catalyst 9800 Series Wireless Controller 17.10 Release Notes

<https://www.cisco.com/c/en/us/td/docs/wireless/controller/9800/17-10/release-notes/rn-17-10-9800.html>

Release Notes for Cisco Spaces

<https://www.cisco.com/c/en/us/td/docs/wireless/spaces/release-notes/b-cisco-spaces-rn.html>

Cisco Catalyst 9600 Series Switches 17.10 Release Notes

https://www.cisco.com/c/en/us/td/docs/switches/lan/catalyst9600/software/release/17-10/release_notes/ol-17-10-9600.html

Release Notes Cisco Digital Network Architecture Center

https://www.cisco.com/c/en/us/td/docs/cloud-systems-management/network-automation-and-management/dna-center/2-3-5/release_notes/b_cisco_dna_center_rn_2_3_5.html

PI 3.9 User Guide

https://www.cisco.com/c/en/us/td/docs/net_mgmt/prime/infrastructure/3-9/user/guide/bk_CiscoPrimeInfrastructure_3_9_0_UserGuide.html

ISE 3.1 Release Notes

https://www.cisco.com/c/en/us/td/docs/security/ise/3-1/release_notes/b_ise_31_RN.html