



## **Test Results Summary for Cisco DNA Center Automation & Assurance (Release Version 2.3.4 )**

**First Published:** 2022-10-27

**Last Modified:** 2022-10-28

### **Americas Headquarters**

Cisco Systems, Inc.  
170 West Tasman Drive  
San Jose, CA 95134-1706  
USA  
<http://www.cisco.com>  
Tel: 408 526-4000  
800 553-NETS (6387)  
Fax: 408 527-0883





## CONTENTS

---

### CHAPTER 1

#### Overview 1

Cisco DNA Center test 2

---

### CHAPTER 2

#### Test topology and Environment Matrix 7

Test Topology 8

Component Matrix 9

What's New ? 12

Open Caveats 13

Resolved Caveats 14

---

### CHAPTER 3

#### New Features 17

Channel Change Report 18

Channel Utilization Breakout 21

Client Detail Report Enhancements - Device Analytics Insights 23

Client Global Events viewer 25

Support for Multiple Anchor Configurations 27

Mobility Peer Configuration Enhancements 29

Issues correlation[AP-down issue] 32

Open RRM Phase 2 - RF Simulator 34

Support for Custom WLAN Profile Configuration 36

Support for CCKM configuration on SSID 41

Support for manually disable clients on wireless controller 45

Support phase-2 Mesh configurations on wireless LAN controllers 46

Support for Scheduling SSID Broadcasting 50

Tri-Radio Configuration Support for APs 55

Top N Site - SLA Dashboard - Client KPIs 58

Troubleshooting tab on AP-360 61

**CHAPTER 4**

**Regression Features 65**

3D Maps Enhancements Phase 2 67

Ability to manage multiple AP groups /Policy tags 70

All Data Report - Inventory and SWIM 71

AP Impersonation 73

AP Reboot for Troubleshooting 75

Assurance - Client 360 Usage Events 77

AP Usage and Client Breakdown Report 79

Assurance workflow changes to support AP Refresh 82

Busiest AP 83

Busiest Client Report 85

Called Station ID 87

Display AP Ethernet MAC address in Inventory and details page 90

DNA Dashboard for Open RRM 92

Download option for config preview 94

Enable CLI Configuration Preview for Update Telemetry Settings and Site Assignment 96

Endpoints 360 98

Enhancements on AP config flow 100

Exporting Assurance Pages - Overall Health, Network Health and Client Health 103

Health Analytics 105

Inventory - Support for Maintenance mode 107

MAC Randomization 110

Managing WLC HA SSO via DNAC - Enhancements 111

Network Device 112

Network Insights 2.0 - Radio Insights based on Client Experience 114

Network Setting Design Compliance 116

Overall and Network Health Dashboard 117

Pan Assurance event viewer 121

Radius Profiling 123

Rolling AP Upgrade 126

RRM - Support Coverage Hole Detection EDRRM configurations 128

RRM - Support for General Parameters 129

RRM assurance for granular reasons for power and channel change	131
Show Rogue client location in the threat 360	133
Site 360/Dashboard Landing Page	135
Smart Licencing	137
Support AP refresh across different WLCs	139
Support configuration of advanced WLAN parameters	140
Support Dual band XOR radio config	143
Support for AP LED blink flash from DNAC	147
Support for Custom Policy Tag for C9800	152
Support for next set of AP configurations from DNAC	155
Support for recurring discovery	158
Support recurrent configuration of AP and radio parameters	160
Swim Enhancement	166
Troubleshoot Certification 2.0 - WLC Unmonitored	168
Unique clients and users summary	171
Worst Interferer	173

---

**CHAPTER 5****Related Documents 175**

Related Documentation	176
-----------------------	-----





# Overview

---

- [Cisco DNA Center test](#) , on page 2

# Cisco DNA Center test

Cisco DNA Center test , an integral part of the enterprise wireless solution, is a program that validates various Cisco Wireless Products and Features. This is achieved by testing the latest versions of Cisco wireless products

Cisco DNA Center for Japan , in turn is an add-on testing at the solution level, where the requirements gathered are specific to Japanese usage and market. The requirements are derived based on the following:

- New features in DNA center 2.3.4
- High priority scenarios and basic regression features
- Inputs from Cisco SEs/ TAC

The test execution is carried out on selected Cisco Wireless LAN products, which affect the Japanese segment that are prioritized by Cisco Japan team.

The following products are covered in the test execution:

- Cisco Catalyst 9800 Series Wireless Controller
- Cisco Catalyst 9800-CL Wireless Controller for Cloud
- Cisco Embedded Wireless Controller on Catalyst Access Points
- Cisco DNA Spaces
- Cisco DNA Connector
- ISE(VM)
- Cisco ISR 1100
- Cisco AP c9115
- Cisco AP c9120
- Cisco AP c9130
- Cisco AP c9105
- Access Point 4800
- Access Point 1810

## Acronyms

Acronym	Description
AAA	Authentication Authorization and Accounting
ACL	Access Control List
ACS	Access Control Server
AKM	Authentication Key Management
AP	Access Point



<b>Acronym</b>	<b>Description</b>
API	Application Programming Interface
APIC-EM	Application Policy Infrastructure Controller - Enterprise Module
ATF	Air-Time Fairness
AVC	Application Visibility and Control.
BGN	Bridge Group Network
BLE	Bluetooth Low Energy
BYOD	Bring Your Own Device
CA	Central Authentication
CAC	Call Admissions Control
CAPWAP	Control and Provisioning of Wireless Access Point
CCKM	Cisco Centralized Key Management
CCN	Channel Change Notification
CCX	Cisco Compatible Extensions
CDP	Cisco Discovery Protocol
CKIP	Cisco Key Integrity Protocol
CMX	Connected Mobile Experience
CVBF	Cisco Vector Beam Forming
CWA	Central Web Authentication
DCA	Dynamic Channel Assignment
DMZ	Demilitarized Zone
DNS	Domain Name System
DNA-C	Digital Network Architecture Center
DTIM	Delivery Traffic Indication Map
DSCP	Differentiated Services Code Point
DTLS	Datagram Transport Layer Security
EAP	Extensible Authentication Protocol
EULA	End User Licence Agreement
EWC	Embedded Wireless Controller
FLA	Flex Local Authentication
FLS	Flex Local Switching
FT	Fast Transition
FTP	File Transfer Protocol

Acronym	Description
FW	Firm Ware
HA	High Availability
H-REAP	Hybrid Remote Edge Access Point
IOS	Internetwork Operating System
ISE	Identity Service Engine
ISR	Integrated Services Router
LAG	Link Aggregation
LEAP	Lightweight Extensible Authentication Protocol
LSS	Location Specific Services
LWAPP	Lightweight Access Point Protocol
MAP	Mesh Access Point
MCS	Modulation Coding Scheme
MFP	Management Frame Protection
mDNS	multicast Domain Name System
MIC	Message Integrity Check
MSE	Mobility Service Engine
MTU	Maximum Transmission Unit
NAC	Network Admission Control
NAT	Network Address Translation
NBAR	Network Based Application Recognition
NCS	Network Control System
NGWC	Next Generation Wiring closet
NMSP	Network Mobility Services Protocol
OEAP	Office Extended Access Point
PEAP	Protected Extensible Authentication Protocol
PEM	Policy Enforcement Module
PI	Prime Infrastructure
PMF	Protected Management Frame
POI	Point of Interest
PPPoE	Point-to-Point Protocol over Ethernet
PSK	Pre-shared Key
QOS	Quality of service

<b>Acronym</b>	<b>Description</b>
RADIUS	Remote Authentication Dial-In User Service
RAP	Root Access Point
RP	Redundancy Port
RRM	Radio Resource Management
SDN	Software Defined Networking
SOAP	Simple Object Access Protocol
SFTP	Secure File Transfer Protocol
SNMP	Simple Network Management Protocol
SS	Spatial Stream
SSID	Service Set Identifier
SSO	Single Sign On
SSO	Stateful Switch Over
SWIM	Software Image Management
TACACS	Terminal Access Controller Access Control System
TCP	Transmission Control Protocol
TFTP	Trivial File Transfer Protocol
TLS	Transport Layer Security
UDP	User Datagram Protocol
vWLC	Virtual Wireless LAN Controller
VPC	Virtual port channel
VPN	Virtual Private Network
WEP	Wired Equivalent Privacy
WGB	Workgroup Bridge
wIPS	Wireless Intrusion Prevention System
WLAN	Wireless LAN
WLC	Wireless LAN Controller
WPA	Wi-Fi Protected Access
WSM	Wireless Security Module



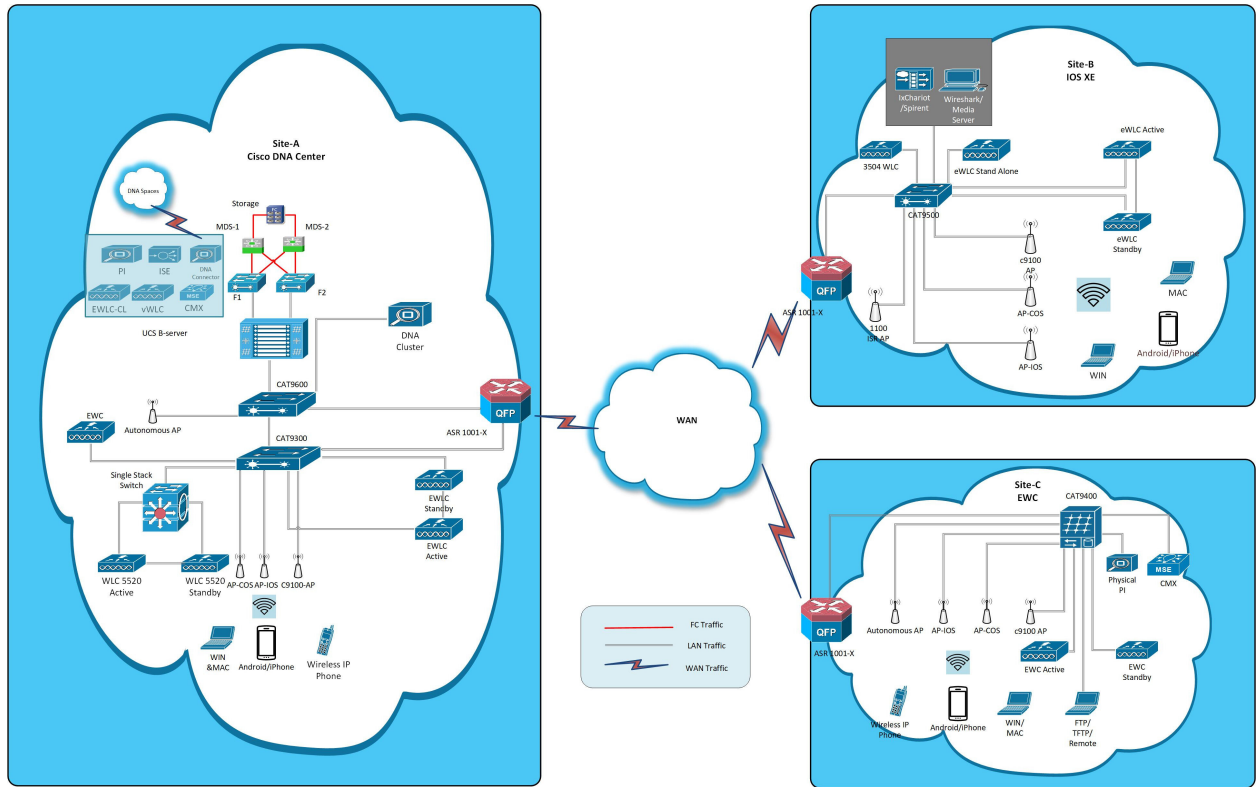


## Test topology and Environment Matrix

---

- [Test Topology, on page 8](#)
- [Component Matrix, on page 9](#)
- [What's New ?, on page 12](#)
- [Open Caveats, on page 13](#)
- [Resolved Caveats, on page 14](#)

# Test Topology



# Component Matrix

Category	Component	Version
Controller	Cisco Catalyst 9800-40 Wireless Controller	17.10
	Cisco Catalyst 9800-80 Wireless Controller	17.10
	Cisco Catalyst 9800-CL Wireless Controller for Cloud	17.10
	Cisco Catalyst 9800-L Wireless Controller	17.10
	Cisco Embedded Wireless Controller on Catalyst Access Points	17.10
	Virtual Controller	8.10.121.0
Applications	Cisco DNA Center	2.3.4
	Cisco DNA Spaces	Cloud (Sep 2022)
	Cisco DNA Spaces Connector	2.3.3
	Prime Infrastructure (Virtual Appliance, UCS based)	3.9.0.0
	ISE(VM)	3.1.0
	Cisco Jabber for Windows, iPhone	14.1
	Cisco Air Provisioning App	1.7.4
	Cisco Wireless App	1.1.113
Access Point	Cisco AP 9115	17.10
	Cisco AP 9120	17.10
	Cisco AP 9130	17.10
	Cisco AP 9105	17.10
	Cisco 1100 ISR	17.10
	Cisco AP 4800	15.3
	Cisco AP 1810	15.3

Category	Component	Version
Switch	Cisco Cat 9300	17.10
	Cisco Cat 9200L	17.10
	Cisco Cat 9800	17.10
	Cisco 3750V2 switch	15.0(2)SE2
	Cisco Cat 6509-E	15.1(1)SY1
Chipset	5300, 6300 AGN	15.40.41.5058
	7265 AC	21.40.2
	Airport Extreme	7.9.1
Client	Operating System(JOS)	Windows 8 & 8.1 Enterprise
		Windows XP Professional
		Windows 10
	Apple Mac Book Pro, Apple Mac Book Air (JP Locale)	Mac OS 13
	iPad Pro	iOS 16
	iPhone 6, 6S ,7 & 11 (JP Locale)	iOS 16
	Samsung Galaxy S7,S10, Nexus 6P, Sony Xperia XZ	Android 13
	Wireless IP Phone 8821	11.0.4-14
	End points	Windows 7 Enterprise
		Apple Mac 11.2.1
		Windows 8 & 8.1
		iPhone 6,6S ,7 & 11
		Windows 10
		Windows 11
Samsung Galaxy S4, S7,S10, Nexus 6P, Sony Xperia		
Cisco AnyConnect VPN Client	4.10.05111	
MS surface GO	Windows 10	
Module	Hyper location Module	NA
Active Directory	AD	Windows server 2022
Call Control	Cisco Unified Communications Manager	12.5.0.99832-3/12.5.0.99832-3-1(JP)



<b>Category</b>	<b>Component</b>	<b>Version</b>
Browsers	IE	11.0
	Mozilla Firefox	106.0.5
	Safari	16.1
	Chrome	107.0.5304.107

# What's New ?

## DNA Center

- Channel Change Report
- Channel Utilization Breakout
- Client Detail Report Enhancements - Device Analytics Insights
- Client Global Events viewer
- Support for Multiple Anchor Configurations
- Mobility Peer Configuration Enhancements
- Issues correlation[AP-down issue]
- Open RRM Phase 2 - RF Simulator
- Support for Custom WLAN Profile Configuration
- Support for CCKM configuration on SSID
- Support for manually disable clients on wireless controller
- Support phase-2 Mesh configurations on wireless LAN controllers
- Support for Scheduling SSID Broadcasting
- Tri-Radio Configuration Support for APs
- Top N Site - SLA Dashboard - Client KPIs
- Troubleshooting tab on AP-360

## Open Caveats

Bug ID	Title
CSCwd11932	JA Locale : SSID Creation showing Dual Band
CSCwc83140	WLC Name is showing as "null" for Detailed Information tab
CSCwd06860	Reports are not generating for all reports & showing as IN QUEUE.
CSCwd12263	No specific range bound for Channel/Tx power in 3D maps
CSCwc99983	Dashboard Library: Creation of blank space dashlets causes multiple issues
CSCwd14769	AI Enhanced RRM- AI RF Profile page is blank while reloading the page
CSCwc68759	Wireless Client Data Collection:Troubleshoot Duration and Client MAC address has no specific formats
CSCwc91913	Toggle Topology view is not showing after maximizing geographical view
CSCwc65138	AP chassis details are not showing
CSCwc89449	Device page is closing automatically after configuring Tag
CSCwd11930	Band Selection options were not shown while creating ssid

## Resolved Caveats

Bug ID	Title
CSCwc66018	No option to close List of Acknowledged Violation Attributes page
CSCwc83011	JA Locale: Some fields are showing "undefined" for Device Info
CSCwc90088	JA Locale : Assurance health page - exported site detail table showing random char for Japanese word
CSCwc63272	Dashboard Library: Network and Client Health Templates facing issues while creating templates
CSCwc66874	JA Locale: Unable to access Applications dashlet
CSCwc66921	JA locale: I-content is showing directly for all dashlets in Trends and Insights page
CSCwc63242	Dashboard Library: Sensor Dashboard Dashlets are not working properly for add dashlets
CSCwc67200	Error validation is not showing for RF group name for default mobility group
CSCwd29393	DNAC: Provision >> Inventory >> Topology >> expand all collapse all not Working
CSCwc67263	JA Locale: Getting an invalid date error message for audit logs
CSCwc68635	Default mobility group indication is showing at inventory home page
CSCwc89437	Security Advisories: Getting an error message while changing Edit Table Columns settings
CSCwc65142	Toggle Topology View: Device Provision getting an error message and device details are not showing
CSCwc65890	Able to configure Design name as "spaces" for any Design instance
CSCwc66054	Provision ->Inventory->Topology: Facing issues with Collapse All and Expand All
CSCwc67383	Advanced SSID Configuration overlapping and content is not fully visible issues observed
CSCwd10801	JA Locale: Network Services ->DHCP Time range is not showing properly
CSCwc67667	Device addition gets failed with error shown across CLI credentials validation

CSCwd41211	Unable to configure wireless controller values for Ap Radio reports in DNAC GUI
------------	---





## New Features

---

- [Channel Change Report](#), on page 18
- [Channel Utilization Breakout](#), on page 21
- [Client Detail Report Enhancements - Device Analytics Insights](#), on page 23
- [Client Global Events viewer](#), on page 25
- [Support for Multiple Anchor Configurations](#), on page 27
- [Mobility Peer Configuration Enhancements](#), on page 29
- [Issues correlation\[AP-down issue\]](#), on page 32
- [Open RRM Phase 2 - RF Simulator](#), on page 34
- [Support for Custom WLAN Profile Configuration](#), on page 36
- [Support for CCKM configuration on SSID](#), on page 41
- [Support for manually disable clients on wireless controller](#), on page 45
- [Support phase-2 Mesh configurations on wireless LAN controllers](#), on page 46
- [Support for Scheduling SSID Broadcasting](#), on page 50
- [Tri-Radio Configuration Support for APs](#), on page 55
- [Top N Site - SLA Dashboard - Client KPIs](#), on page 58
- [Troubleshooting tab on AP-360](#), on page 61

# Channel Change Report

Logical ID	Title	Description	Status	Defect ID
DNACJ234S_CCR_1	Generate the report for the radio band 2.4 GHZ and check the details of the report	To check the report generated for radio band 2.4 GHZ and check details of the report	Passed	
DNACJ234S_CCR_2	Generate the report for the radio band 5 GHZ and check the details of the report	To check the report generated for radio band 5 GHZ and check details of the report	Failed	CSCwd41211
DNACJ234S_CCR_3	Generate the report for the radio band 6 GHZ and check the details of the report	To check the report generated for radio band 6 GHZ and check details of the report	Passed	
DNACJ234S_CCR_4	Generate the report for the all radio bands and check the details of the report	To check the report generated for all radio bands and check details of the report	Passed	
DNACJ234S_CCR_5	Generate the report for the Scope is Global check the details of the report	To check the report generated for the Scope is Global and check details of the report	Passed	
DNACJ234S_CCR_6	Generate the report for the Scope for scope(multiple locations) check the details of the report	To check the report generated for the scope(multiple locations) is Global and check details of the report	Passed	
DNACJ234S_CCR_7	Generate the report for file type as CSV check the details of the report	To check the report generated for the file type as CSV and check details of the report	Passed	
DNACJ234S_CCR_8	Generate the report for file type as Tableau Data Extract check the details of the report	To check the report generated for the file type as Tableau Data Extract and check details of the report	Passed	



DNACJ234S_CCR_9	Generate the report for file type as JSON check the details of the report	To check the report generated for the file type as JSON check details of the report	Passed	
DNACJ234S_CCR_10	Generate the report for time range is last 3 hours check the details of the report	To check the report generated for time range is last 3 hours check details of the report	Passed	
DNACJ234S_CCR_11	Generate the report for time range is last 24 hours check the details of the report	To check the report generated for time range is last 24 hours check details of the report	Passed	
DNACJ234S_CCR_12	Generate the report for time range is last 7 days check the details of the report	To check the report generated for time range is last 7 days check details of the report	Passed	
DNACJ234S_CCR_13	Generate the report for time range is last 30 days check the details of the report	To check the report generated for time range is last 30 days check details of the report	Passed	
DNACJ234S_CCR_14	Generate the report for time range is custom check the details of the report	To check the report generated for time range is custom check details of the report	Passed	
DNACJ234S_CCR_15	Generate the report for Schedule is Run Now and check the details of the report	To check the report generated for Schedule is Run Now and check details of the report	Passed	
DNACJ234S_CCR_16	Generate the report for Schedule is Run Later(one-time) and check the details of the report	To check the report generated for Schedule is Run Later(one-time) and check details of the report	Passed	
DNACJ234S_CCR_17	Generate the report for Schedule is Run Recurring and check the details of the report	To check the report generated for Schedule is Run Recurring and check details of the report	Passed	

DNACJ234S_CCR_18	Generate the report with email notification and check the details of the report	To check the report with email notification and check details of the report	Passed	
DNACJ234S_CCR_19	Generate the report with webhook notification and check the details of the report	To check the report with webhook notification and check details of the report	Passed	
DNACJ234S_CCR_20	Generate the report with all radio bands and Schedule is Run Now check the details of the report	To check the report with all radio bands and Schedule is Run Now and check details of the report	Passed	
DNACJ234S_CCR_21	Generate the report with all radio bands and Scope is Global check the details of the report	To check the report with all radio bands and Scope is Global is Run Now and check details of the report	Passed	

## Channel Utilization Breakout

Logical ID	Title	Description	Status	Defect ID
DNACJ234S_CUB_1	Check Rx/Tx details on AP 360 page	To check Rx/Tx details on AP 360 page	Passed	
DNACJ234S_CUB_2	Check interference details on AP 360 page	To check interference details on AP 360 page	Passed	
DNACJ234S_CUB_3	Check utilization breakout chart for 9105 AP	To check utilization breakout chart for 9105 AP	Passed	
DNACJ234S_CUB_4	Check utilization breakout chart for 9115 AP	To check utilization breakout chart for 9115 AP	Passed	
DNACJ234S_CUB_5	Check utilization breakout chart for 9120 AP	To check utilization breakout chart for 9120 AP	Passed	
DNACJ234S_CUB_6	Check utilization breakout chart for 9130 AP	To check utilization breakout chart for 9130 AP	Passed	
DNACJ234S_CUB_7	Check utilization breakout chart for 4800 AP	To check utilization breakout chart for 4800 AP	Passed	
DNACJ234S_CUB_8	Check details of connected clients to 5Ghz bands.	To check details of connected clients to 5Ghz bands.	Passed	
DNACJ234S_CUB_9	Check details of connected clients to 2.4Ghz bands.	To check details of connected clients to 2.4Ghz bands.	Passed	
DNACJ234S_CUB_10	Check device details with bad health in generated chart.	To check device details with bad health in generated chart.	Passed	
DNACJ234S_CUB_11	Check utilization breakout chart for Windows client	To check utilization breakout chart for Windows client	Passed	
DNACJ234S_CUB_12	Check utilization breakout chart for Android client	To check utilization breakout chart for Android client	Passed	

DNACJ234S_CUB_13	Check utilization breakout chart for Mac client	To check utilization breakout chart for Mac client	Passed	
DNACJ234S_CUB_14	Check utilization breakout chart for iPhone client	To check utilization breakout chart for iPhone client	Passed	
DNACJ234S_CUB_15	Check utilization breakout chart for roaming client	To check utilization breakout chart for roaming client	Passed	

## Client Detail Report Enhancements - Device Analytics Insights

Logical ID	Title	Description	Status	Defect ID
DNACJ234S_CDR_1	Generate the client detail report as PDF format and check the details of the device.	To Check the report generated as PDF format or not and to check the details of the device.	Failed	CSCwd06860
DNACJ234S_CDR_2	Generate the client detail report as CSV format and check the details of the device.	To Check the report generated as CSV format or not and to check the details of the device.	Passed	
DNACJ234S_CDR_3	Generate the client detail report as TDE format and check the details of the device.	To Check the report generated as TDE format or not and to check the details of the device.	Passed	
DNACJ234S_CDR_4	Generate the client detail report with schedule time as now and check the details of the device.	To Check the report generated in schedule now time and to check the details of the device.	Passed	
DNACJ234S_CDR_5	Generate the client detail report with schedule time as Run later and check the details of the device.	To Check the report generated in schedule later time and to check the details of the device.	Passed	
DNACJ234S_CDR_6	Generate the client detail report with schedule time as Run Recurring option and check the details of the device.	To Check the report generated in schedule recurring time and to check the details of the device.	Passed	
DNACJ234S_CDR_7	Generate the client detail report with email notification and check the details of the device.	To Verify the notification generated or not with valid report details and to check the details of the device.	Passed	

DNACJ234S_CDR_8	Generate the client detail report with webhook notification and check the details of the device.	To Verify the notification generated or not with valid report details and to check the details of the device.	Passed	
DNACJ234S_CDR_9	Generate the client detail report after deleted all the devices in DNAC	To validate the report details shown or not after deleted the device in DNAC	Passed	

## Client Global Events viewer

Logical ID	Title	Description	Status	Defect ID
DNACJ234S_CV_1	Configuring DNAC with Network devices, clients, access points.	To configure DNAC with Network devices, clients, access points.	Passed	
DNACJ234S_CV_2	Making the 9800-L eWLC down which is added in DNAC	To make the eWLC 9800-80 down which is added in DNAC and verify if the	Passed	
DNACJ234S_CV_3	Making the 9800-CL eWLC down which is added in DNAC	To make the eWLC 9800-80 down which is added in DNAC and verify if the	Passed	
DNACJ234S_CV_4	Making the 2.4GHz of 9105 AP radio down and check if the logs showing in DNAC	To make the 2.4GHz of 9105 AP radio down of the AP which is connected to eWLC	Passed	
DNACJ234S_CV_5	Making the 2.4GHz of 9115 AP radio down and check if the logs showing in DNAC	To make the 2.4GHz of 9115 AP radio down of the AP which is connected to eWLC	Passed	
DNACJ234S_CV_6	Making the 2.4GHz of 9120 AP radio down and check if the logs showing in DNAC	To make the 2.4GHz of 9120 AP radio down of the AP which is connected to eWLC	Passed	
DNACJ234S_CV_7	Making the 2.4GHz of 9130 AP radio down and check if the logs showing in DNAC	To make the 2.4GHz of 9130 AP radio down of the AP which is connected to eWLC	Passed	
DNACJ234S_CV_8	Making the 5GHz of 9105 AP radio down and check if the logs showing in DNAC	To make the 5GHz of 9105 AP radio down of the AP which is connected to eWLC	Passed	

DNACJ234S_CV_9	Making the 5GHz of 9115 AP radio down and check if the logs showing in DNAC	To make the 5GHz of 9115 AP radio down of the AP which is connected to eWLC	Passed	
DNACJ234S_CV_10	Making the 5GHz of 9120 AP radio down and check if the logs showing in DNAC	To make the 5GHz of 9120 AP radio down of the AP which is connected to eWLC	Passed	
DNACJ234S_CV_11	Making the 5GHz of 9130 AP radio down and check if the logs showing in DNAC	To make the 5GHz of 9130 AP radio down of the AP which is connected to eWLC	Passed	
DNACJ234S_CV_12	Disconnecting a 9105 AP from eWLC	To disconnect a 9105 AP from eWLC and verify the same in the Issues & Events	Passed	
DNACJ234S_CV_13	Disconnecting a 9115 AP from eWLC	To disconnect a 9115 AP from eWLC and verify the same in the Issues & Events	Passed	
DNACJ234S_CV_14	Disconnecting a 9120 AP from eWLC	To disconnect a 9120 AP from eWLC and verify the same in the Issues & Events	Passed	
DNACJ234S_CV_15	Disconnecting a 9130 AP from eWLC	To disconnect a 9105 AP from eWLC and verify the same in the Issues & Events	Passed	
DNACJ234S_CV_16	Making the 9800-80 eWLC down which is added in DNAC	To make the eWLC 9800-80 down which is added in DNAC and verify if the	Passed	



## Support for Multiple Anchor Configurations

Logical ID	Title	Description	Status	Defect ID
DNACJ234S_AnSSID_1	Create and verify Anchor Group	To create and verify Anchor Group	Passed	
DNACJ234S_AnSSID_2	Edit Anchor Group	To edit Anchor Group	Passed	
DNACJ234S_AnSSID_3	Delete Anchor Group	To delete Anchor Group	Passed	
DNACJ234S_AnSSID_4	Create Anchor SSID	To create Anchor SSID	Passed	
DNACJ234S_AnSSID_5	Configure network profile with WLC1 as Active main, WLC2, WLC3 as Anchor with same site	To configure network profile with WLC1 as Active main, WLC2, WLC3 as Anchor with same site	Passed	
DNACJ234S_AnSSID_6	Configure another network profile with WLC1 as Active main, WLC2, WLC3 as Anchor with same site	To configure network profile with WLC1 as Active main, WLC2, WLC3 as Anchor with same site	Passed	
DNACJ234S_AnSSID_7	Create and map network profiles with different Anchor WLCs with same site	To create and map network profiles with different Anchor WLCs with same site	Passed	CSCwc65142
DNACJ234S_AnSSID_8	Configure and map network profile with Anchor WLCs with different sites	To configure and map network profile with Anchor WLCs with different sites	Passed	
DNACJ234S_AnSSID_9	Configure and map another network profile with Anchor WLCs with different sites	To configure and map network profile with Anchor WLCs with different sites	Passed	
DNACJ234S_AnSSID_10	Configure and map different network profiles with Anchor WLCs with different sites	To configure and map different network profiles with Anchor WLCs with different sites	Failed	CSCwc67383

DNACI234S_AnSSID_11	Configure and map network profiles with Anchor WLCs with different sites	To configure and map network profiles with Anchor WLCs with different sites	Passed	
DNACI234S_AnSSID_12	Configure and map network profiles with Anchor WLCs with different sites	To configure and map network profiles with Anchor WLCs with different sites	Passed	
DNACI234S_AnSSID_13	Create and map network profiles with different Anchor WLCs (9800-40, 9800-80, 9800-CL) with same site	To create and map network profiles with different Anchor WLCs (9800-40, 9800-80, 9800-CL) with same site	Passed	
DNACI234S_AnSSID_14	Configure and map network profile with Anchor WLCs (9800-40, 9800-80, 9800-CL) with different sites	To configure and map network profile with Anchor WLCs (9800-40, 9800-80, 9800-CL) with different sites	Passed	
DNACI234S_AnSSID_15	Create and map network profiles with different Anchor WLCs (9800 HA setups) with same site	To create and map network profiles with different Anchor WLCs (9800 HA setups) with same site	Passed	
DNACI234S_AnSSID_16	Configure and map network profile with Anchor WLCs (9800 HA setups) with different sites	To configure and map network profile with Anchor WLCs (9800 HA setups) with different sites	Passed	

## Mobility Peer Configuration Enhancements

Logical ID	Title	Description	Status	Defect ID
DNACJ234S_EfM_1	Add peer to existing mobility group	Adding managed Peer into exiting mobility group. Added peers should get reflected into all existing managed peers	Passed	
DNACJ234S_EfM_2	Delete peer from existing mobility group	Deleting managed Peer into exiting mobility group. Deleted peers should get reflected into all existing managed peers	Passed	
DNACJ234S_EfM_3	Add OOB Peer into exiting mobility group.	Adding OOB Peer into exiting mobility group. Added peers should get reflected into all existing managed peers	Passed	
DNACJ234S_EfM_4	Configure multiple mobility group with same name	Verify the name applied to all the mobility group	Passed	CSCwc68635
DNACJ234S_EfM_5	Modify the mobility group attributes	Verify the changes updated in mobility group or not	Passed	
DNACJ234S_EfM_6	Populate the mobility group attributes	Populating new mobility attributes : device Series, private IP.	Passed	
DNACJ234S_EfM_7	Verify the details in OOB page	Verify the mobility peer details shown correctly or not	Passed	
DNACJ234S_EfM_8	View the Mobility details from device.	Verify the mobility peer details from device shown correctly or not	Passed	
DNACJ234S_EfM_9	Configure the mobility group and reset the DNAC	Verify the mobility peer details after DNAC reset	Passed	CSCwc67200

DNACJ234S_EfM_10	Configuring Mobility configuration in Controller	To verify the mobility configuration in controller	Passed	
DNACJ234S_EfM_11	Checking the Mobility configuration in DNAC	To verify whether the mobility configurations are showing or not in DNAC	Passed	
DNACJ234S_EfM_12	Changing the Mobility group name in controller-1 and check the controller's status in DNAC	To verify whether the controller status in DNAC by changing the mobility group Name.	Passed	
DNACJ234S_EfM_13	Checking the Mobility groups configuration in HA setup	To check the mobility group configurations in DNAC during HA	Passed	
DNACJ234S_EfM_14	Checking the Mobility configuration between lightweight to virtual controller in DNAC	To check whether the mobility happens between lightweight & Virtual controller	Passed	
DNACJ234S_EfM_15	Checking the mobility configuration between virtual to 9800 controller in DNAC	To check whether the mobility happens between 9800 & Virtual controller	Passed	
DNACJ234S_EfM_16	Verifying the mobility configuration with Different Radio types in DNAC	To verify whether Client is Moving between Controllers with Different Radio type or not	Passed	
DNACJ234S_EfM_17	Verifying the mobility configuration with same Radio types in DNAC	To verify whether Client is Moving between Controllers with same Radio type or not	Passed	
DNACJ234S_EfM_18	Monitoring mobility configuration in DNAC using Android Client	To verify whether the Android client details are showing in DNAC or not	Passed	

DNACJ234S_EfM_19	Monitoring mobility configuration in DNAC using iOS Client	To verify whether the iOS client details are showing in DNAC or not	Passed	
DNACJ234S_EfM_20	Monitoring mobility configuration in DNAC using Windows Client	To verify whether the Windows client details are showing in DNAC or not	Passed	
DNACJ234S_EfM_21	Monitoring mobility configuration in DNAC using Mac Client	To verify whether the Mac client details are showing in DNAC or not	Passed	
DNACJ234S_EfM_22	Add/update/delete mobility peer configuration in DNAC	To check whether the mobility Peer configurations are add/Update/delete in DNAC	Passed	

## Issues correlation[AP-down issue]

Logical ID	Title	Description	Status	Defect ID
DNACJ234S_IC_1	Join Network devices to DNAC	To join Network devices to DNAC	Passed	
DNACJ234S_IC_2	Make a 9105 AP down and check whether AP Down issue notification is seen in issue page	To make a 9105 AP down and check whether AP Down issue notification is seen in issue page	Passed	
DNACJ234S_IC_3	Make a 9115 AP down and check whether AP Down issue notification is seen in issue page	To make a 9115 AP down and check whether AP Down issue notification is seen in issue page	Passed	
DNACJ234S_IC_4	Make a 9120 AP down and check whether AP Down issue notification is seen in issue page	To make a 9120 AP down and check whether AP Down issue notification is seen in issue page	Passed	
DNACJ234S_IC_5	Make a 9130 AP down and check whether AP Down issue notification is seen in issue page	To make a 9130 AP down and check whether AP Down issue notification is seen in issue page	Failed	CSCwc68759
DNACJ234S_IC_6	Make a 9105 AP down and check whether AP Down issue notification is seen in device 360	To make a 9105 AP down and check whether AP Down issue notification is seen in Device 360	Passed	
DNACJ234S_IC_7	Make a 9115 AP down and check whether AP Down issue notification is seen in device 360	To make a 9115 AP down and check whether AP Down issue notification is seen in Device 360	Passed	
DNACJ234S_IC_8	Make a 9120 AP down and check whether AP Down issue notification is seen in device 360	To make a 9120 AP down and check whether AP Down issue notification is seen in Device 360	Passed	

DNACJ234S_IC_9	Make a 9130 AP down and check whether AP Down issue notification is seen in device 360	To make a 9130 AP down and check whether AP Down issue notification is seen in Device 360	Passed	
DNACJ234S_IC_10	Make Several Aps connected to a single switch down and check all the ap down issue notification is shown as a single notification or not	To make Several Aps connected to a single switch down and check all the ap down issue notification is shown as a single notification or not	Passed	
DNACJ234S_IC_11	Make Several Aps connected to different switch down and check whether the ap down notification is seen based on switch or not	To make Several Aps connected to different switch down and check whether the ap down notification is seen based on switch or not	Passed	
DNACJ234S_IC_12	Check whether able to export the issue from issues & Events page	To check whether able to export the issue from issues & Events page	Passed	
DNACJ234S_IC_13	Check Problem details, Impact details and suggested actions of the issue from Issue & Event page	To check Problem details, Impact details and suggested actions of the issue from issue and event page	Passed	
DNACJ234S_IC_14	Check whether able to export the issue from Device 360	To check whether able to export the issue from Device 360	Passed	
DNACJ234S_IC_15	Check Problem details, Impact details and suggested actions of the issue from Device 359	To check Problem details, Impact details and suggested actions of the issue from Device 359	Passed	
DNACJ234S_IC_16	Check whether the issues are auto resolved when the ap comes to up state	To check whether the issues are auto resolved when the ap comes to up state	Passed	

## Open RRM Phase 2 - RF Simulator

Logical ID	Title	Description	Status	Defect ID
DNACJ234S_RFS_1	Configure Open RRM and enable connectivity to kairos cloud	To configure Open RRM and enable connectivity to kairos cloud	Failed	CSCwd14769
DNACJ234S_RFS_2	Configure Open RRM and test for 5ghz band	To configure Open RRM and for 5ghz band	Passed	
DNACJ234S_RFS_3	Configure Open RRM and test for 2.4ghz band	To configure Open RRM and test for 2.4ghz band	Passed	
DNACJ234S_RFS_4	Configure Open RRM with WPA3 security	To configure Open RRM with WPA3 security	Passed	
DNACJ234S_RFS_5	Configure Open RRM with WPA2 security	To configure Open RRM with WPA2 security	Passed	
DNACJ234S_RFS_6	Configure Open RRM and test with android client	To configure Open RRM and test with android client	Passed	
DNACJ234S_RFS_7	Configure Open RRM and test with iPhone client	To configure Open RRM and test with iPhone client	Passed	
DNACJ234S_RFS_8	Configure Open RRM and test with Mac client	To configure Open RRM and test with Mac client	Passed	
DNACJ234S_RFS_9	Configure Open RRM and test with Surface client	To configure Open RRM and test with Surface client	Passed	
DNACJ234S_RFS_10	Configure Open RRM and test with Windows client	To configure Open RRM and test with Windows client	Passed	
DNACJ234S_RFS_11	Configure Open RRM and test with only FRA enabled	To configure Open RRM and test with only FRA enabled	Passed	
DNACJ234S_RFS_12	Configure Open RRM and test with only DCA enabled	To configure Open RRM and test with only DCA enabled	Passed	



DNACJ234S_RFS_13	Configure Open RRM and test with only TPC enabled	To configure Open RRM and test with only TPC enabled	Passed	
DNACJ234S_RFS_14	Configure Open RRM and test with only DBS enabled	To configure Open RRM and test with only DBS enabled	Passed	
DNACJ234S_RFS_15	Configure Open RRM and test with different RF algorithm combinations	To configure Open RRM and test with different RF algorithm combinations	Passed	
DNACJ234S_RFS_16	Configure Open RRM and test with manually assigned channel bandwidth and channel nos	To configure Open RRM and test with manually assigned channel bandwidth and channel nos	Passed	
DNACJ234S_RFS_17	Configure Open RRM and test with 9115, 9120, 9130 AP	To configure Open RRM and test with 9115, 9120, 9130 AP	Passed	
DNACJ234S_RFS_18	Configure Open RRM and test with 4800 AP	To configure Open RRM and test with 4800 AP	Passed	
DNACJ234S_RFS_19	Configure Open RRM and test with eWLC HA	To configure Open RRM and test with eWLC HA	Failed	CSCwc67667
DNACJ234S_RFS_20	Configure Open RRM and test with EWC	To configure Open RRM and test with EWC	Passed	

## Support for Custom WLAN Profile Configuration

Logical ID	Title	Description	Status	Defect ID
DNACJ234S_CuWLAN_1	Validate no of characters and special characters in custom WLAN and policy Profile name	To validate no of characters and special characters in custom WLAN and policy Profile name	Passed	
DNACJ234S_CuWLAN_2	Configure WLAN with custom WLAN profile name, policy profile name and provision to eWLC controller	To configure WLAN with custom WLAN profile name, policy profile name and provision to eWLC controller	Passed	CSCwc65890
DNACJ234S_CuWLAN_3	Edit WLAN parameters with custom WLAN/policy profile name and provision to eWLC controller	To edit WLAN parameters with custom WLAN/policy profile name and provision to eWLC controller	Passed	
DNACJ234S_CuWLAN_4	Edit WLAN Flavours with custom WLAN/ policy profile name and provision to eWLC controller	To edit WLAN Flavours with custom WLAN/ policy profile name and provision to eWLC controller	Passed	
DNACJ234S_CuWLAN_5	Edit SSID with same wlan profile at Global and map it to a another network profile NP2 with flex connect to non flex and re-provision to controller	To edit SSID with same wlan profile at Global and map it to a another network profile NP2 with flex connect to non flex and re-provision to controller	Passed	

DNACJ234S_CuWLAN_6	Edit SSID with same wlan profile at Global and map it to a another network profile NP2 with interface change and re-provision to controller	To edit SSID with same wlan profile at Global and map it to a another network profile NP2 with interface change and re-provision to controller	Passed	
DNACJ234S_CuWLAN_7	Edit SSID with different wlan profile at Global and map it to a another network profile NP2 with interface change and re-provision to controller	To edit SSID with different wlan profile at Global and map it to a another network profile NP2 with interface change and re-provision to controller	Passed	
DNACJ234S_CuWLAN_8	Remove wlan from Network profile and re-provision to controller	To remove wlan from Network profile and re-provision to controller	Passed	
DNACJ234S_CuWLAN_9	Over-ride SSID with same wlan profile name and re-provision to controller	To over-ride SSID with same wlan profile name and re-provision to controller	Passed	
DNACJ234S_CuWLAN_10	Over-ride SSID with different wlan profile name and re-provision to controller	To over-ride SSID with different wlan profile name and re-provision to controller	Failed	CSCwc89449
DNACJ234S_CuWLAN_11	Over-ride SSID with different wlan profile name in floor level and re-provision to controller	To over-ride SSID with different wlan profile name in floor level and re-provision to controller	Passed	
DNACJ234S_CuWLAN_12	Over-ride SSID with different wlan profile name with different wlan parameters and re-provision to controller	To over-ride SSID with different wlan profile name with different wlan parameters and re-provision to controller	Passed	

DNAC1234S_CuWLAN_13	Edit SSID with new wlan profile name and re-provision to controller and validate delete of previously created wlan	To edit SSID with new wlan profile name and re-provision to controller and validate delete of previously created wlan	Passed	
DNAC1234S_CuWLAN_14	Brownfield Learn controller with different wlan profile name and provision to controller	To brownfield Learn controller with different wlan profile name and provision to controller	Passed	
DNAC1234S_CuWLAN_15	Brownfield Learn the controller with 2 Policy Tags(with APs) mapped to same wlanprofile and but different policy profile names	To brownfield Learn the controller with 2 Policy Tags(with APs) mapped to same wlanprofile and but different policy profile names	Passed	
DNAC1234S_CuWLAN_16	Brownfield Learn the controller with 2 Policy Tags(with APs) mapped to same different wlanprofiles and but same policyprofilename	To brownfield Learn the controller with 2 Policy Tags(with APs) mapped to same different wlanprofiles and but same policyprofilename	Passed	
DNAC1234S_CuWLAN_17	Validate WLAN with custom WLAN profile name and policy profile name details are shown in SSID summary page	To validate WLAN with custom WLAN profile name and policy profile name details are shown in SSID summary page	Passed	
DNAC1234S_CuWLAN_18	Validate WLAN with custom WLAN profile name and policy profile name details are shown in during provision of eWLC summary page	To validate WLAN with custom WLAN profile name and policy profile name details are shown in during provision of eWLC summary page	Passed	

DNACJ234S_CuWLAN_19	Validate Audit log WLAN with custom WLAN profile name and policy profile name details are shown in audit log after provision of eWLC	To validate Audit log WLAN with custom WLAN profile name and policy profile name details are shown in audit log after provision of eWLC	Passed	
DNACJ234S_CuWLAN_20	Validate WLAN with custom WLAN profile name and policy profile name are shown in 360 view of eWLC controller	To validate WLAN with custom WLAN profile name and policy profile name are shown in 360 view of eWLC controller	Passed	
DNACJ234S_CuWLAN_21	Validate N+1 scenario for custom WLAN profile name/Policy profile name and provision to eWLC controller	To validate N+1 scenario for custom WLAN profile name/Policy profile name and provision to eWLC controller	Passed	
DNACJ234S_CuWLAN_22	Validate configuration preview scenario for custom WLAN profile name/Policy profile name and provision to eWLC controller	To validate configuration preview scenario for custom WLAN profile name/Policy profile name and provision to eWLC controller	Passed	
DNACJ234S_CuWLAN_23	Validate Provision results shows for custom WLAN profile name/Policy profile name and provision to eWLC controller	To validate Provision results shows for custom WLAN profile name/Policy profile name and provision to eWLC controller	Passed	
DNACJ234S_CuWLAN_24	Validate compliance for custom WLAN profile name/Policy profile name and provision to eWLC controller	To validate compliance for custom WLAN profile name/Policy profile name and provision to eWLC controller	Passed	

DNAC1234S_CuWLAN_25	Validate Upgrade and configure WLAN with custom WLAN profile name, policy profile name and provision to eWLC controller	To validate Upgrade and configure WLAN with custom WLAN profile name, policy profile name and provision to eWLC controller	Passed	
---------------------	---	--	--------	--

## Support for CCKM configuration on SSID

Logical ID	Title	Description	Status	Defect ID
DNACJ234S_CCKMc_1	Validate enable CCKM is applicable only for WPA2 or WPA2+WPA3 security in WLAN and provision to eWLC/ewc devices	To validate enable CCKM is applicable only for WPA2 or WPA2+WPA3 security in WLAN and provision to eWLC/ewc devices	Passed	
DNACJ234S_CCKMc_2	Validate Edit disable CCKM is applicable only for WPA2 or WPA2+WPA3 security in WLAN and provision to eWLC/ewc devices	To validate Edit disable CCKM is applicable only for WPA2 or WPA2+WPA3 security in WLAN and provision to eWLC/ewc devices	Passed	
DNACJ234S_CCKMc_3	Validate CCKM option is not applicable only for PSK/open and open-secured security in WLAN and provision to eWLC/ewc devices	To validate CCKM option is not applicable only for PSK/open and open-secured security in WLAN and provision to eWLC/ewc devices	Passed	
DNACJ234S_CCKMc_4	Validate time stamp tolerance range for CCKM and provision to eWLC/ewc devices	To validate time stamp tolerance range for CCKM and provision to eWLC/ewc devices	Passed	
DNACJ234S_CCKMc_5	Validate edit time stamp tolerance range for CCKM and provision to eWLC/ewc devices	To validate edit time stamp tolerance range for CCKM and provision to eWLC/ewc devices	Passed	

DNACJ234S_CCKMc_6	Validate enable CCKM is applicable only for WPA2 or WPA2+WPA3 security in WLAN with FT enabled and provision to eWLC/ewc devices	To validate enable CCKM is applicable only for WPA2 or WPA2+WPA3 security in WLAN with FT enabled and provision to eWLC/ewc devices	Passed	
DNACJ234S_CCKMc_7	Validate Audit log WLAN with CCKM details/Time stamp are shown in audit log after provision of eWLC/ewc devices	To validate Audit log WLAN with CCKM details/Time stamp are shown in audit log after provision of eWLC/ewc devices	Passed	
DNACJ234S_CCKMc_8	Validate configuration preview scenario for CCKM with time stamp and provision to eWLC/ewc devices	To validate configuration preview scenario for CCKM with time stamp and provision to eWLC/ewc devices	Passed	
DNACJ234S_CCKMc_9	Add Advanced SSID Model Config WLAN parameters with CCKM and provision to eWLC/ewc devices	To add Advanced SSID Model Config WLAN parameters with CCKM and provision to eWLC/ewc devices	Passed	
DNACJ234S_CCKMc_10	Validate WLAN with CCKM and Time stamp tolerance details are shown in SSID summary page	To validate WLAN with CCKM and Time stamp tolerance details are shown in SSID summary page	Passed	
DNACJ234S_CCKMc_11	Validate WLAN with CCKM and Time stamp tolerance details are shown in during provision summary of eWLC/ewc devices summary page	To validate WLAN with CCKM and Time stamp tolerance details are shown in during provision summary of eWLC/ewc devices summary page	Passed	



DNACJ234S_CCKMc_12	Validate Provision results shows for CCKM and provision to eWLC/ewc devices	To validate Provision results shows for CCKM and provision to eWLC/ewc devices	Passed	
DNACJ234S_CCKMc_13	Validate WLAN with time stamp tolerance are allowed to edit in site over-ride configuration and provision to eWLC/ewc devices	To validate WLAN with time stamp tolerance are allowed to edit in site over-ride configuration and provision to eWLC/ewc devices	Passed	
DNACJ234S_CCKMc_14	Validate WLAN with CCKM are allowed to edit in site over-ride configuration and provision eWLC/ewc devices	To validate WLAN with CCKM are allowed to edit in site over-ride configuration and provision eWLC/ewc devices	Passed	
DNACJ234S_CCKMc_15	Validate compliance for time stamp tolerance and provision to eWLC/ewc devices	To validate compliance for time stamp tolerance and provision to eWLC/ewc devices	Passed	
DNACJ234S_CCKMc_16	Validate compliance for CCKM and provision to eWLC/ewc devices	To validate compliance for CCKM and provision to eWLC/ewc devices	Passed	
DNACJ234S_CCKMc_17	Validate Brownfield for CCKM and provision to eWLC/ewc devices	To validate Brownfield for CCKM and provision to eWLC/ewc devices	Passed	
DNACJ234S_CCKMc_18	Validate Brownfield for time stamp tolerance and provision to eWLC/ewc devices	To validate Brownfield for time stamp tolerance and provision to eWLC/ewc devices	Passed	
DNACJ234S_CCKMc_19	Configure WLAN with CCKM with flex connect SSID and provision to eWLC/ewc devices	To configure WLAN with CCKM with flex connect SSID and provision to eWLC/ewc devices	Passed	

DNACI234S_CCKMc_20	Configure WLAN with CCKM with fabric SSID and provision to eWLC/ewc devices	To configure WLAN with CCKM with fabric SSID and provision to eWLC/ewc devices	Passed	
DNACI234S_CCKMc_21	Backup and restore with CCKM enabled/disabled and time stamp and provision to eWLC/ewc devices	To do backup and restore with CCKM enabled/disabled and time stamp and provision to eWLC/ewc devices	Passed	
DNACI234S_CCKMc_22	Backup and restore at site level over-ride and provision to eWLC/ewc devices	To do backup and restore at site level over-ride and provision to eWLC/ewc devices	Passed	
DNACI234S_CCKMc_23	Validate Windows Client connect with CCKM	To validate Windows Client connect with CCKM	Passed	
DNACI234S_CCKMc_24	Validate Android Client connect with CCKM	To validate Android Client connect with CCKM	Passed	
DNACI234S_CCKMc_25	Validate MAC Client connect with CCKM	To validate MAC Client connect with CCKM	Passed	
DNACI234S_CCKMc_26	Validate IOS Client connect with CCKM	To validate IOS Client connect with CCKM	Passed	
DNACI234S_CCKMc_27	Validate Surface Go Client connect with CCKM	To validate Surface Go Client connect with CCKM	Passed	
DNACI234S_CCKMc_28	Validate Client roam with CCKM	To validate Client roam with CCKM	Passed	
DNACI234S_CCKMc_29	Validate event viewer of client page shows CCKM authentication type	To validate event viewer of client page shows CCKM authentication type	Passed	CSCwc63272

## Support for manually disable clients on wireless controller

Logical ID	Title	Description	Status	Defect ID
DNACJ234S_MDC_1	Listing of manual Disabled Clients	To Verify manual disabled clients details listed or not	Passed	
DNACJ234S_MDC_2	Add Manual Disabled Clients/Exclusion Clients option	To Verify manual disabled clients added or not	Passed	
DNACJ234S_MDC_3	Edit Manual Disabled Clients/Exclusion Clients option	To Verify manual disabled clients details edited or not	Passed	
DNACJ234S_MDC_4	Delete manual disabled clients	To Verify Manual disabled client details deleted or not	Passed	
DNACJ234S_MDC_5	Add Manual Disabled Clients to WLC option	To Verify Manual disabled clients added using WLC option or not	Passed	
DNACJ234S_MDC_6	Upload Manual disable clients details using CSV	To Verify Manual disabled clients details Uploaded or not using CSV file	Passed	
DNACJ234S_MDC_7	Check the format of mac address.	To Verify the supported mac format	Passed	
DNACJ234S_MDC_8	Validate the manual disable client details in Client 360 page	To Verify the manual disable client details in client 360 page.	Passed	
DNACJ234S_MDC_9	Add unreachable device and check the status	To Verify unreachable device added or not.	Passed	
DNACJ234S_MDC_10	Import bulk clients macs to exclusion list.	To Verify able to import bulk clients macs to exclusion list.	Passed	

## Support phase-2 Mesh configurations on wireless LAN controllers

Logical ID	Title	Description	Status	Defect ID
DNACJ234S_Meshc_1	Configuring Mesh and provisioning the AP	To configure Mesh and provisioning the AP	Passed	
DNACJ234S_Meshc_2	Verify Mesh AP all details in Device 360 page	To verify Mesh AP all details in Device 360 page	Failed	CSCwc83140
DNACJ234S_Meshc_3	Verify Mesh AP General Information in Device 360 page	To verify Mesh AP General Information in Device 360 page	Passed	
DNACJ234S_Meshc_4	Verify Mesh AP Network Information in Device 360 page	To verify Mesh AP Network Information in Device 360 page	Passed	
DNACJ234S_Meshc_5	Verify Mesh AP Rack Information in Device 360 page	To verify Mesh AP Rack Information in Device 360 page	Passed	
DNACJ234S_Meshc_6	Verify Physical Neighbour Topology for RAP on Mesh AP 360 page	To verify Physical Neighbour Topology for RAP on Mesh AP 360 page	Passed	
DNACJ234S_Meshc_7	Verify Physical Neighbour Topology for MAP on Mesh AP 360 page	To verify Physical Neighbour Topology for MAP on Mesh AP 360 page	Passed	
DNACJ234S_Meshc_8	Verify Mesh AP tab added for MAP on AP 360 page	To verify Mesh AP tab added for MAP on AP 360 page	Passed	
DNACJ234S_Meshc_9	Verify Mesh AP tab details on AP 360 page	To verify Mesh AP tab details on AP 360 page	Passed	CSCwc83011
DNACJ234S_Meshc_10	Configuring Mesh setup in 9115 AP from DNAC and verifying the same in eWLC	To configure mesh setup in 9115 AP from DNAC and check if the configuration are pushed to eWLC	Passed	

DNACJ234S_Meshc_11	Configuring Mesh setup in 9120 AP from DNAC and verifying the same in eWLC	To configure mesh setup in 9120 AP from DNAC and check if the configuration are pushed to eWLC	Passed	
DNACJ234S_Meshc_12	Configuring Mesh setup in 9130 AP from DNAC and verifying the same in eWLC	To configure mesh setup in 9130 AP from DNAC and check if the configuration are pushed to eWLC	Passed	
DNACJ234S_Meshc_13	Configuring Mesh setup in 2800 AP from DNAC and verifying the same in eWLC	To configure mesh setup in 2800 AP from DNAC and check if the configuration are pushed to eWLC	Passed	
DNACJ234S_Meshc_14	Check if the Mesh settings from DNAC is pushed into eWLC 9800-40 or not	To verify if the mesh setting done in AP from DNAC is pushed to eWLC 9800-40 or not and check all the configuration pushed from DNAC	Passed	
DNACJ234S_Meshc_15	Check if the Mesh settings from DNAC is pushed into eWLC 9800-80 or not	To verify if the mesh setting done in AP from DNAC is pushed to eWLC 9800-80 or not and check all the configuration pushed from DNAC	Passed	
DNACJ234S_Meshc_16	Check if the Mesh settings from DNAC is pushed into eWLC 9800-L or not	To verify if the mesh setting done in AP from DNAC is pushed to eWLC 9800-L or not and check all the configuration pushed from DNAC	Passed	

DNACI234S_Meshc_17	Check if the Mesh settings from DNAC is pushed into eWLC 9800-CL or not	To verify if the mesh setting done in AP from DNAC is pushed to eWLC 9800-CL or not and check all the configuration pushed from DNAC	Passed	
DNACI234S_Meshc_18	Connecting a Window client to the Mesh AP which is configured from DNAC	To connect a Window client to the Mesh AP which is configured from DNAC and check the behaviour and also check the AP details	Passed	
DNACI234S_Meshc_19	Connecting a Window Surface client to the Mesh AP which is configured from DNAC	To connect a Window surface client to the Mesh AP which is configured from DNAC and check the behaviour and also check the AP details	Passed	
DNACI234S_Meshc_20	Connecting a Android client to the Mesh AP which is configured from DNAC	To connect a Android client to the Mesh AP which is configured from DNAC and check the behaviour and also check the AP details	Passed	
DNACI234S_Meshc_21	Connecting a IOS client to the Mesh AP which is configured from DNAC	To connect a IOS client to the Mesh AP which is configured from DNAC and check the behaviour and also check the AP details	Passed	

DNACJ234S_Meshc_22	Connecting a MAC OS client to the Mesh AP which is configured from DNAC	To connect a Mac OS client to the Mesh AP which is configured from DNAC and check the behaviour and also check the AP details	Passed	
DNACJ234S_Meshc_23	Verify Mesh AP for both Bridge and Flex Bridge Mode	To verify Mesh AP for both Bridge and Flex Bridge Mode	Passed	
DNACJ234S_Meshc_24	Verify Downstream MAPs when Mesh AP setup changes	To verify Downstream MAPs when Mesh AP setup changes	Passed	
DNACJ234S_Meshc_25	Verify BGN when its name changes	To verify BGN when its name changes	Passed	
DNACJ234S_Meshc_26	Verify Mesh Backhaul Channel when channel number changes	To verify Mesh Backhaul Channel when channel number changes	Passed	
DNACJ234S_Meshc_27	Verify Mesh Backhaul Channel when using multiple channels	To verify Mesh Backhaul Channel when using multiple channels	Passed	
DNACJ234S_Meshc_28	Verify Mesh Roles	To verify Mesh Roles	Passed	
DNACJ234S_Meshc_29	Verify Path Trace on mesh AP 360 Page	To verify Path Trace on mesh AP 360 Page	Passed	
DNACJ234S_Meshc_30	Verify Wi-Fi 6 Mesh AP	To verify Wi-Fi 6 Mesh AP	Passed	
DNACJ234S_Meshc_31	Verify topology on Client 360 page	To verify topology on Client 360 page	Passed	
DNACJ234S_Meshc_32	Test Mesh Topology related events on event viewer	To test Mesh Topology related events on event viewer	Passed	

## Support for Scheduling SSID Broadcasting

Logical ID	Title	Description	Status	Defect ID
DNACJ234S_SS_1	Create a SSID Scheduler profile with Enable SSID scheduler function in DNAC	To Create a SSID Scheduler profile with Enable SSID scheduler function in DNAC	Passed	
DNACJ234S_SS_2	Create a SSID Scheduler profile with Client Deny scheduler function in DNAC	To Create a SSID Scheduler profile with Client Deny scheduler function in DNAC	Passed	
DNACJ234S_SS_3	Create a SSID Scheduler profile with Client Deny/Enable SSID scheduler function and Daily Scheduler type in DNAC	To create a SSID Scheduler profile with Client Deny/Enable SSID scheduler function and Daily Scheduler type in DNAC	Passed	
DNACJ234S_SS_4	Create a SSID Scheduler profile with Client Deny/Enable SSID scheduler function and Weekly Scheduler type in DNAC	To create a SSID Scheduler profile with Client Deny/Enable SSID scheduler function and Weekly Scheduler type in DNAC	Passed	
DNACJ234S_SS_5	Create a SSID Scheduler profile with Client Deny/Enable SSID scheduler function and monthly Scheduler type in DNAC	To create a SSID Scheduler profile with Client Deny/Enable SSID scheduler function and monthly Scheduler type in DNAC	Passed	
DNACJ234S_SS_6	Create a SSID and map with the created SSID Profile	To create a SSID and map with the created SSID Profile	Passed	



DNACJ234S_SS_7	Create a SSID with daily scheduler and provision with 9800-L controller and check whether the configuration reflected in 9800-L controller	To create a SSID with daily scheduler and provision with 9800-L controller and check whether the configuration reflected in 9800-L controller	Failed	CSCwd11930
DNACJ234S_SS_8	Create a SSID with daily scheduler and provision with 9800-CL controller and check whether the configuration reflected in 9800-CL controller	To create a SSID with daily scheduler and provision with 9800-CL controller and check whether the configuration reflected in 9800-CL controller	Failed	CSCwd11932
DNACJ234S_SS_9	Create a SSID with daily scheduler and provision with 9800-80 controller and check whether the configuration reflected in 9800-80 controller	To create a SSID with daily scheduler and provision with 9800-80 controller and check whether the configuration reflected in 9800-80 controller	Passed	
DNACJ234S_SS_10	Create a SSID with weekly scheduler and provision with 9800-L controller and check whether the configuration reflected in 9800-L controller	To create a SSID with weekly scheduler and provision with 9800-L controller and check whether the configuration reflected in 9800-L controller	Passed	
DNACJ234S_SS_11	Create a SSID with weekly scheduler and provision with 9800-CL controller and check whether the configuration reflected in 9800-CL controller	To create a SSID with weekly scheduler and provision with 9800-CL controller and check whether the configuration reflected in 9800-CL controller	Passed	

DNACJ234S_SS_12	Create a SSID with weekly scheduler and provision with 9800-80 controller and check whether the configuration reflected in 9800-80 controller	To create a SSID with weekly scheduler and provision with 9800-80 controller and check whether the configuration reflected in 9800-80 controller	Passed	
DNACJ234S_SS_13	Create a SSID with monthly scheduler and provision with 9800-L controller and check whether the configuration reflected in 9800-L controller	To create a SSID with monthly scheduler and provision with 9800-L controller and check whether the configuration reflected in 9800-L controller	Passed	
DNACJ234S_SS_14	Create a SSID with monthly scheduler and provision with 9800-CL controller and check whether the configuration reflected in 9800-CL controller	To create a SSID with monthly scheduler and provision with 9800-CL controller and check whether the configuration reflected in 9800-CL controller	Passed	
DNACJ234S_SS_15	Create a SSID with monthly scheduler and provision with 9800-80 controller and check whether the configuration reflected in 9800-80 controller	To create a SSID with monthly scheduler and provision with 9800-80 controller and check whether the configuration reflected in 9800-80 controller	Passed	
DNACJ234S_SS_16	Create a SSID with daily scheduler and provision with 9800-L/CL/80 controller and check for client connectivity	To create a SSID with daily scheduler and provision with 9800-L/CL/80 controller and check for client connectivity	Passed	

DNACJ234S_SS_17	Create a SSID with weekly scheduler and provision with 9800-L/CL/80 controller and check for client connectivity	To create a SSID with weekly scheduler and provision with 9800-L/CL/80 controller and check for client connectivity	Passed	
DNACJ234S_SS_18	Create a SSID with monthly scheduler and provision with 9800-L/CL/80 controller and check for client connectivity	To create a SSID with monthly scheduler and provision with 9800-L/CL/80 controller and check for client connectivity	Passed	
DNACJ234S_SS_19	Create a SSID with Enable SSID function and check whether the SSID is broadcasted at selected time period	To create a SSID with Enable SSID function and check whether the SSID is broadcasted at selected time period	Passed	
DNACJ234S_SS_20	Create a SSID with Client deny function and check whether client not able to join the ssid at selected time period	To create a SSID with Client deny function and check whether client not able to join the ssid at selected time period	Passed	
DNACJ234S_SS_21	Check whether the SSID scheduler from DNAC is working fine in 9105 AP	To check whether the SSID scheduler from DNAC is working fine in 9105 AP	Passed	
DNACJ234S_SS_22	Check whether the SSID scheduler from DNAC is working fine in 9115 AP	To check whether the SSID scheduler from DNAC is working fine in 9115 AP	Passed	
DNACJ234S_SS_23	Check whether the SSID scheduler from DNAC is working fine in 9120 AP	To check whether the SSID scheduler from DNAC is working fine in 9120 AP	Passed	

DNACJ234S_SS_24	Check whether the SSID scheduler from DNAC is working fine in 9130 AP	To check whether the SSID scheduler from DNAC is working fine in 9130 AP	Passed	
DNACJ234S_SS_25	Check the SSID scheduler with open security ssid	To check the SSID scheduler with open security ssid	Passed	
DNACJ234S_SS_26	Check the SSID scheduler with WPA2-PSK security ssid	To check the SSID scheduler with WPA2-PSK security ssid	Passed	
DNACJ234S_SS_27	Check the SSID scheduler with WPA3-PSK security ssid	To check the SSID scheduler with WPA3-PSK security ssid	Passed	
DNACJ234S_SS_28	Check the SSID scheduler with WPA2-802.1x security ssid	To check the SSID scheduler with WPA2-802.1x security ssid	Passed	
DNACJ234S_SS_29	Check the SSID scheduler with WPA3-802.1x security ssid	To check the SSID scheduler with WPA3-802.1x security ssid	Passed	
DNACJ234S_SS_30	Check the SSID Scheduler with Windows client	To check the SSID Scheduler with Windows client	Passed	
DNACJ234S_SS_31	Check the SSID Scheduler with Mac client	To check the SSID Scheduler with Mac client	Passed	
DNACJ234S_SS_32	Check the SSID Scheduler with Android client	To check the SSID Scheduler with Android client	Passed	
DNACJ234S_SS_33	Check the SSID Scheduler with Surface client	To check the SSID Scheduler with Surface client	Passed	

## Tri-Radio Configuration Support for APs

Logical ID	Title	Description	Status	Defect ID
DNACJ234S_TriR_1	Configure Dual radio mode as "Enabled" with Radio role as Client serving	To Verify dual radio role enabled or not	Passed	
DNACJ234S_TriR_2	Configure Dual radio mode as "Auto"	To Verify dual radio role mode configured as auto or not	Passed	
DNACJ234S_TriR_3	Configure Dual radio mode as "Disabled"	To verify dual radio mode disabled or not	Passed	
DNACJ234S_TriR_4	Configure Dual radio mode as "Enabled" with Radio role as "Monitor"	To verify dual radio mode role configured as monitor or not	Passed	
DNACJ234S_TriR_5	Configure Dual radio mode as "Enabled" with Radio role as "Auto"	To verify dual radio mode role configured as auto or not	Passed	
DNACJ234S_TriR_6	Verify the slot-1 & slot-2's Radio role assignment and admin status are independent of each other	To verify role assignment and admin status for slots	Passed	
DNACJ234S_TriR_7	Verify that slot-1 & slot-2 can have a max channel width of 80 MHz each when dual-radio mode is enabled with client serving mode	To verify max channel width of each slots	Passed	
DNACJ234S_TriR_8	Verify the error handling when global tri-radio is disabled on WLC and dual radio mode is enabled form workflow	To verify error handling while global radio option is disabled	Passed	

DNACJ234S_TriR_9	Verify the View Devices in tri-radio page	To validate the details of tri radio mode in tri radio page	Passed	
DNACJ234S_TriR_10	Verify Dual radio mode cannot be enabled on an AP when it is in Monitor mode	To verify dual mode enabled or not during ap in monitor mode	Passed	
DNACJ234S_TriR_11	Verify Dual radio mode cannot be enabled on an AP when it is in Sniffer mode	To verify dual mode enabled or not when ap in sniffer mode	Passed	
DNACJ234S_TriR_12	Verify the same channel configuration on slot-1 & Slot-2 when dual radio mode is enabled	To verify channel configuration when dual mode enabled	Passed	
DNACJ234S_TriR_13	Verify AP Reprovision after the Dual-radio mode is disabled on it from the AP config workflow	Verify the dual mode config enabled or not after ap reprovision	Passed	
DNACJ234S_TriR_14	Verify AP Reprovision after the Dual-radio mode is enabled on it from the AP config workflow	Verify the dual mode config disabled or not after ap reprovision	Passed	
DNACJ234S_TriR_15	Verify AP re-provision after Dual-radio mode is enabled and radio role is in auto or monitor	To verify dual mode role as auto or not after ap re-provisioning	Passed	
DNACJ234S_TriR_16	Tri radio admin status from recurring flow on supported Aps	To verify admin status recurring flow on supported aps	Passed	
DNACJ234S_TriR_17	Verify the recurring tasks scheduled to run periodically, runs correctly after upgrade	To verify recurring tasks runs correctly or not based on schedule	Passed	

DNACJ234S_TriR_18	Verify the Sunray functionality with Tri radio Aps after the dual-radio mode is enabled	To verify sunray functionality after dual mode radio enabled	Passed	
DNACJ234S_TriR_19	Verify enabling the Dual-radio mode on the APs on a DNAC upgraded from Guardian to Groot release	To verify dual mode after DNAC upgradation	Passed	
DNACJ234S_TriR_20	Verify enabling the Dual-radio mode on the APs on a DNAC upgraded from Frey to Groot release	Verify dual mode radio after DANC upgrade to Frey to Groot	Passed	

## Top N Site - SLA Dashboard - Client KPIs

Logical ID	Title	Description	Status	Defect ID
DNACJ234S_TopN_1	Verify the values for Coverage, Onboarding, Roaming, and Connection speed on the Site Analytics section of the Overall Health Page for 24 hrs	To verify the values for Coverage, Onboarding, Roaming, and Connection speed on the Site Analytics section of the Overall Health Page for 24 hrs	Passed	
DNACJ234S_TopN_2	Verify the values for Coverage, Onboarding, Roaming, and Connection speed on the Site Analytics section of the Overall Health Page for 3 hrs	To verify the values for Coverage, Onboarding, Roaming, and Connection speed on the Site Analytics section of the Overall Health Page for 3 hrs	Passed	
DNACJ234S_TopN_3	Verify the values for Coverage, Onboarding, Roaming, and Connection speed on the Site Analytics section of the Overall Health Page for 7 days	To verify the values for Coverage, Onboarding, Roaming, and Connection speed on the Site Analytics section of the Overall Health Page for 7 hrs	Passed	
DNACJ234S_TopN_4	Verify the values for Coverage, Onboarding, Roaming, and Connection speed on the Site Analytics section of the Overall Health Page for previous day-24hrs	To verify the values for Coverage, Onboarding, Roaming, and Connection speed on the Site Analytics section of the Overall Health Page for previous day 24hrs	Passed	



DNACJ234S_TopN_5	Verify the values for Coverage, Onboarding, Roaming, and Connection speed on the Site Analytics section of the Overall Health Page for previous day -3 hrs	To verify the values for Coverage, Onboarding, Roaming, and Connection speed on the Site Analytics section of the Overall Health Page for previous day 3 hrs	Passed	
DNACJ234S_TopN_6	Verify the values for Coverage, Onboarding, Roaming, and Connection speed on the Site Analytics section of the Overall Health Page for previous day- 7 days	To verify the values for Coverage, Onboarding, Roaming, and Connection speed on the Site Analytics section of the Overall Health Page for previous day -7 days	Passed	
DNACJ234S_TopN_7	View Site Analytics Link on the Site Analytics section of the Overall Health Page	To view Site Analytics Link on the Site Analytics section of the Overall Health Page	Passed	
DNACJ234S_TopN_8	Info Icons on the Site Analytics section of the Overall Health Page	To view the Info Icons on the Site Analytics section of the Overall Health Page	Passed	
DNACJ234S_TopN_9	Site Matrix KPI % values for 24 hrs on the Site Analytics Map	To view Site Matrix KPI % values for 24 hrs on the Site Analytics Map	Passed	
DNACJ234S_TopN_10	Site Matrix KPI % values for 3 hrs on the Site Analytics Map	To view Site Matrix KPI % values for 3 hrs on the Site Analytics Map	Passed	
DNACJ234S_TopN_11	Site Matrix KPI % values for 7 days on the Site Analytics Map	To view Site Matrix KPI % values for 7 days on the Site Analytics Map	Passed	
DNACJ234S_TopN_12	Site Matrix KPI % values for Previous 3 hrs on the Site Analytics Map	To view Site Matrix KPI % values for Previous 3 hrs on the Site Analytics Map	Passed	

DNACJ234S_TopN_13	Site Matrix KPI % values for Previous 24 hrs on the Site Analytics Map	To view Site Matrix KPI % values for Previous 24 hrs on the Site Analytics Map	Passed	
DNACJ234S_TopN_14	Site Matrix KPI % values for Previous 7 days on the Site Analytics Map	To view Site Matrix KPI % values for Previous 7 days on the Site Analytics Map	Passed	
DNACJ234S_TopN_15	Metric violations count for KPI % values on the Site Analytics Map	To view metric violations count for KPI % values on the Site Analytics Map	Passed	
DNACJ234S_TopN_16	Color Scheme for KPI % values on the Site Analytics Map	To view Color Scheme for KPI % values on the Site Analytics Map	Passed	
DNACJ234S_TopN_17	Check whether Info Icons on the Site Analytics Map is shown correct	To check whether Info Icons on the Site Analytics Map is shown correct	Passed	

## Troubleshooting tab on AP-360

Logical ID	Title	Description	Status	Defect ID
DNACJ234S_AP360_1	Add network devices like switches, Controllers to DNAC and check if the network devices gets added to DNAC or not	To add network devices like switches, Controllers to DNAC and check if the network devices gets added to DNAC or not	Passed	
DNACJ234S_AP360_2	Configuring DNAC with Network devices, clients, access points.	To configure DNAC with Network devices, clients, access points.	Passed	
DNACJ234S_AP360_3	Check 9130 AP whether able to monitor Ping Tool in AP 360	To check 9130 AP whether able to monitor Ping Tool in AP 360	Passed	
DNACJ234S_AP360_4	Check 9120 AP whether able to monitor Ping Tool in AP 360	To check 9120 AP whether able to monitor Ping Tool in AP 360	Passed	
DNACJ234S_AP360_5	Check 9105 AP whether able to monitor Ping Tool in AP 360	To check 9105 AP whether able to monitor Ping Tool in AP 360	Passed	
DNACJ234S_AP360_6	Check 9115 AP whether able to monitor Ping Tool in AP 360	To check 9115 AP whether able to monitor Ping Tool in AP 360	Passed	
DNACJ234S_AP360_7	Check 9130 AP whether able to monitor Path trace Tool in AP 360	To check 9130 AP whether able to monitor Path trace Tool in AP 360	Passed	
DNACJ234S_AP360_8	Check 9115 AP whether able to monitor Path trace Tool in AP 360	To check 9115 AP whether able to monitor Path trace Tool in AP 360	Passed	
DNACJ234S_AP360_9	Check 9105 AP whether able to monitor Path trace Tool in AP 360	To check 9105 AP whether able to monitor Path trace Tool in AP 360	Passed	

DNACJ234S_AP360_10	Check 9120 AP whether able to monitor Path trace Tool in AP 360	To check 9120 AP whether able to monitor Path trace Tool in AP 360	Passed	
DNACJ234S_AP360_11	Check whether able to monitor live Traffic -Path trace Tool in AP 360	To check whether able to monitor live Traffic -Path trace Tool in AP 360	Passed	
DNACJ234S_AP360_12	Check 9130 AP whether able to monitor Trace Route Tool in AP 360	To check 9130 AP whether able to monitor Trace Route Tool in AP 360	Passed	
DNACJ234S_AP360_13	Check 9120 AP whether able to monitor Trace Route Tool in AP 360	To check 9120 AP whether able to monitor Trace Route Tool in AP 360	Passed	
DNACJ234S_AP360_14	Check 9105 AP whether able to monitor Trace Route Tool in AP 360	To check 9105 AP whether able to monitor Trace Route Tool in AP 360	Passed	
DNACJ234S_AP360_15	Check 9115 AP whether able to monitor Trace Route Tool in AP 360	To check 9115 AP whether able to monitor Trace Route Tool in AP 360	Passed	
DNACJ234S_AP360_16	Device Action for 9130 AP as Rebooting AP in AP 360 Tools	To device Action for 9130 AP as Rebooting AP in AP 360 Tools	Passed	
DNACJ234S_AP360_17	Device Action for 9115 AP as Rebooting AP in AP 360 Tools	To device Action for 9115 AP as Rebooting AP in AP 360 Tools	Passed	
DNACJ234S_AP360_18	Device Action for 9105 AP as Rebooting AP in AP 360 Tools	To device Action for 9105 AP as Rebooting AP in AP 360 Tools	Passed	
DNACJ234S_AP360_19	Device Action for 9120 AP as Rebooting AP in AP 360 Tools	To device Action for 9120 AP as Rebooting AP in AP 360 Tools	Passed	

DNACJ234S_AP360_20	Device Action for 9130 AP as Flash Led blink Forever in AP 360 Tools	To device Action for 9130 AP as Flash Led blink Forever in AP 360 Tools	Passed	
DNACJ234S_AP360_21	Device Action for 9120 AP as Flash Led blink Forever in AP 360 Tools	To device Action for 9120 AP as Flash Led blink Forever in AP 360 Tools	Passed	
DNACJ234S_AP360_22	Device Action for 9105 AP as Flash Led blink Forever in AP 360 Tools	To device Action for 9105 AP as Flash Led blink Forever in AP 360 Tools	Passed	
DNACJ234S_AP360_23	Device Action for 9115 AP as Flash Led blink Forever in AP 360 Tools	To device Action for 9115 AP as Flash Led blink Forever in AP 360 Tools	Passed	
DNACJ234S_AP360_24	Device Action for 9130 AP as Flash Led Stop blinking AP 360 Tools	To device Action for 9130 AP as Flash Led Stop blinking AP 360 Tools	Passed	
DNACJ234S_AP360_25	Device Action for 9115 AP as Flash Led Stop blinking AP 360 Tools	To device Action for 9115 AP as Flash Led Stop blinking AP 360 Tools	Passed	
DNACJ234S_AP360_26	Device Action for 9105 AP as Flash Led Stop blinking AP 360 Tools	To device Action for 9105 AP as Flash Led Stop blinking AP 360 Tools	Passed	
DNACJ234S_AP360_27	Device Action for 9120 AP as Flash Led Stop blinking AP 360 Tools	To device Action for 9120 AP as Flash Led Stop blinking AP 360 Tools	Passed	
DNACJ234S_AP360_28	Check whether able to reset Radio 0 for 2.4 GHz in AP 360 tools	To check whether able to reset Radio 0 for 2.4 GHz in AP 360 tools	Passed	

DNACJ234S_AP360_29	Check whether able to reset Radio 1 for 5 GHz in AP 360 tools	To check whether able to reset Radio 1 for 5 GHz in AP 360 tools	Passed	
DNACJ234S_AP360_30	Check whether able to reset Radio 2 for 5 GHz in AP 360 tools	To check whether able to reset Radio 2 for 5 GHz in AP 360 tools	Passed	



## Regression Features

---

- [3D Maps Enhancements Phase 2](#), on page 67
- [Ability to manage multiple AP groups /Policy tags](#), on page 70
- [All Data Report - Inventory and SWIM](#), on page 71
- [AP Impersonation](#), on page 73
- [AP Reboot for Troubleshooting](#), on page 75
- [Assurance - Client 360 Usage Events](#), on page 77
- [AP Usage and Client Breakdown Report](#), on page 79
- [Assurance workflow changes to support AP Refresh](#), on page 82
- [Busiest AP](#), on page 83
- [Busiest Client Report](#), on page 85
- [Called Station ID](#), on page 87
- [Display AP Ethernet MAC address in Inventory and details page](#), on page 90
- [DNA Dashboard for Open RRM](#), on page 92
- [Download option for config preview](#), on page 94
- [Enable CLI Configuration Preview for Update Telemetry Settings and Site Assignment](#), on page 96
- [Endpoints 360](#), on page 98
- [Enhancements on AP config flow](#), on page 100
- [Exporting Assurance Pages - Overall Health, Network Health and Client Health](#), on page 103
- [Health Analytics](#), on page 105
- [Inventory - Support for Maintenance mode](#), on page 107
- [MAC Randomization](#), on page 110
- [Managing WLC HA SSO via DNAC - Enhancements](#), on page 111
- [Network Device](#), on page 112
- [Network Insights 2.0 - Radio Insights based on Client Experience](#), on page 114
- [Network Setting Design Compliance](#), on page 116
- [Overall and Network Health Dashboard](#), on page 117
- [Pan Assurance event viewer](#), on page 121
- [Radius Profiling](#), on page 123
- [Rolling AP Upgrade](#), on page 126
- [RRM - Support Coverage Hole Detection EDRRM configurations](#), on page 128
- [RRM - Support for General Parameters](#), on page 129
- [RRM assurance for granular reasons for power and channel change](#), on page 131
- [Show Rogue client location in the threat 360](#), on page 133

- [Site 360/Dashboard Landing Page](#), on page 135
- [Smart Licencing](#), on page 137
- [Support AP refresh across different WLCs](#), on page 139
- [Support configuration of advanced WLAN parameters](#), on page 140
- [Support Dual band XOR radio config](#), on page 143
- [Support for AP LED blink flash from DNAC](#) , on page 147
- [Support for Custom Policy Tag for C9800](#), on page 152
- [Support for next set of AP configurations from DNAC](#), on page 155
- [Support for recurring discovery](#), on page 158
- [Support recurrent configuration of AP and radio parameters](#), on page 160
- [Swim Enhancement](#), on page 166
- [Troubleshoot Certification 2.0 - WLC Unmonitored](#), on page 168
- [Unique clients and users summary](#), on page 171
- [Worst Interferer](#), on page 173



## 3D Maps Enhancements Phase 2

Logical ID	Title	Description	Status	Defect ID
DNACJ234S_Reg_217	Heatmap must incorporate effect of AP location, txPower, elevation and azimuth	Verify if changes reflected or not	Passed	
DNACJ234S_Reg_218	User can select multiple APs and see the cumulative coverage of these Aps	Verify if changes reflected or not	Passed	
DNACJ234S_Reg_219	Support multiple radios per AP on the same band	Verify if changes reflected or not	Passed	
DNACJ234S_Reg_220	Heatmap must incorporate antenna propagation pattern	Verify if changes reflected or not	Passed	
DNACJ234S_Reg_221	UI control for channels and channel display	Verify if changes reflected or not	Passed	
DNACJ234S_Reg_222	change the AP type	Verify if we can change the AP type	Passed	
DNACJ234S_Reg_223	Ability to control AP position & height	Verify if we can move the AP position on the 3d Floor map and modify its height as well and as well in 2d mode	Passed	
DNACJ234S_Reg_224	Floor level RF model selection granularity	Verify if we are able to get floor level RF model in case of multi floor building	Passed	
DNACJ234S_Reg_225	Ability to control AP Tx Power level & Channel	Verify if we change the TX power and channel, we can see it on the 3d floor map	Failed	CSCwd12263

DNACJ234S_Reg_226	Ability to control external antenna type	Verify if we can select the type of external antenna - omni directional, bi-directional, etc	Passed	
DNACJ234S_Reg_227	Ability to control the camera in first person mode (fly controls)	Verify if ability is there to get regular FOV and a wide angle FOV	Passed	
DNACJ234S_Reg_228	Clip plane default position must align with building's bounding box	Verify if default position is aligned with buildings bounding box	Passed	
DNACJ234S_Reg_229	Ability to control the camera such that it orbits around a target (orbit controls)	Verify if we can control camera around a target	Passed	
DNACJ234S_Reg_230	Support near/far clip planes in 3 dimensions for point cloud and isosurface visualizations	verify support is available for near/far clip plans in 3D	Passed	
DNACJ234S_Reg_231	Ability to save custom view settings	Verify if we can save customer view settings and retrieve them	Passed	
DNACJ234S_Reg_232	Ability to control the SLA target for Signal Strength (default: TBD) and SNR (default:TBD)	Verify SLA control knob for RSSI & SNR	Passed	
DNACJ234S_Reg_233	Insight on coverage gaps (substantiated by sensor ray visualization)	Verify coverage gaps from Sensor(ray visualization)	Passed	
DNACJ234S_Reg_234	Insights Infra: Ability to hyperlink insight into chase camera view of 3D visualization	Verify hyperlink of insight to chase camera(3D)	Passed	
DNACJ234S_Reg_235	3D floor data can be entered directly into DNAC using the Maps wall/obstacle drawing function	Verify manual 3D floor data can be entered & saved	Passed	

DNACJ234S_Reg_236	3D Rendering of Building Geometry with multi-floor and single floor view support	Verify rendering of building geometry (single,multi)	Passed	
-------------------	--	--	--------	--

## Ability to manage multiple AP groups /Policy tags

Logical ID	Title	Description	Status	Defect ID
DNACJ234S_Reg_710	Create AP Zone for set of AP in DNAC	To create AP Zone for set of AP in DNAC	Passed	
DNACJ234S_Reg_711	Assign network profile to a specific floor with multiple APs	To assign network profile to a specific floor with multiple APs	Passed	
DNACJ234S_Reg_712	Check AP zone effect using 9100 AP models	To check AP zone effect using 9100 AP models	Passed	
DNACJ234S_Reg_713	Check AP zone effect using 4800,3800 AP models	To check AP zone effect using 4800,3800 AP models	Passed	
DNACJ234S_Reg_714	Check AP zone effect using 9800-40 controller	To check AP zone effect using 9800-40 controller	Passed	
DNACJ234S_Reg_715	Check AP zone effect using 9800L controller	To check AP zone effect using 9800L controller	Passed	
DNACJ234S_Reg_716	Check AP zone effect using 9800CL controller	To check AP zone effect using 9800CL controller	Passed	
DNACJ234S_Reg_717	Check AP zone effect using EWC controller	To check AP zone effect using EWC controller	Passed	
DNACJ234S_Reg_718	Check AP zone effect using 9800 HA controller	To check AP zone effect using 9800 HA controller	Passed	
DNACJ234S_Reg_719	Run report generation on the assigned floor and monitor the parameters	To run report generation on the assigned floor and monitor the parameters	Passed	
DNACJ234S_Reg_720	Verify using custom policy tags & RF tags	To verify using custom policy tags & RF tags	Passed	

## All Data Report - Inventory and SWIM

Logical ID	Title	Description	Status	Defect ID
DNACJ234S_Reg_170	Generate the Inventory report as PDF format	To Check the report generated as PDF format or not	Failed	CSCwd14645
DNACJ234S_Reg_171	Generate the Inventory report as CSV format	To Check the report generated as CSV format or not	Passed	
DNACJ234S_Reg_172	Generate the Inventory report as TDE format	To Check the report generated as TDE format or not	Passed	
DNACJ234S_Reg_173	Generate the Inventory report with schedule time as now	To Check the report generated in schedule now time	Passed	
DNACJ234S_Reg_174	Generate the Inventory report with schedule time as Run later	To Check the report generated in schedule later time	Passed	
DNACJ234S_Reg_175	Generate the Inventory report with schedule time as Run Recurring option	To Check the report generated in schedule recurring time	Passed	
DNACJ234S_Reg_176	Generate the Inventory report with email notification	To Verify the notification generated or not with valid report details	Passed	
DNACJ234S_Reg_177	Generate the Inventory report with webhook notification	To Verify the notification generated or not with valid report details	Passed	
DNACJ234S_Reg_178	Generate the Inventory report after deleted all the devices in DNAC	To validate the report details shown or not after deleted the device in DNAC	Passed	
DNACJ234S_Reg_179	Generate the SWIM report as PDF format	To Check the report generated as PDF format or not	Passed	

DNACJ234S_Reg_180	Generate the SWIM report as CSV format	To Check the report generated as CSV format or not	Passed	
DNACJ234S_Reg_181	Generate the SWIM report as TDE format	To Check the report generated as TDE format or not	Passed	
DNACJ234S_Reg_182	Generate the SWIM report with schedule time as now	To Check the report generated in schedule now time	Passed	
DNACJ234S_Reg_183	Generate the SWIM report with schedule time as Run later	To Check the report generated in schedule later time	Passed	
DNACJ234S_Reg_184	Generate the SWIM report with schedule time as Run Recurring option	To Check the report generated in schedule recurring time	Passed	
DNACJ234S_Reg_185	Generate the SWIM report with email notification	To Verify the notification generated or not with valid report details	Passed	
DNACJ234S_Reg_186	Generate the SWIM report with webhook notification	To Verify the notification generated or not with valid report details	Passed	
DNACJ234S_Reg_187	Generate the SWIM report after deleted all the devices in DNAC	To validate the report details shown or not after deleted the device in DNAC	Passed	
DNACJ234S_Reg_188	Generate the SWIM report without performing SWIM operation	To validate the report details shown or not without performing the SWIM operation	Passed	
DNACJ234S_Reg_189	Create report in English UI and validate the details in Japanese UI	To check details are shown or not in Japanese UI	Passed	

# AP Impersonation

Logical ID	Title	Description	Status	Defect ID
DNACJ234S_Reg_237	Enable AP Impersonation on DNAC	To enable AP Impersonation on DNAC	Passed	
DNACJ234S_Reg_238	Enable/Disable Rogue detection on DNAC	To Enable/Disable Rogue detection on DNAC	Passed	
DNACJ234S_Reg_239	Verify AP Impersonation works for 9115AP connected to eWLC	To verify AP Impersonation works for 9115AP connected to eWLC	Passed	
DNACJ234S_Reg_240	Verify AP Impersonation works for 9120AP connected to eWLC	To verify AP Impersonation works for 9120AP connected to eWLC	Passed	
DNACJ234S_Reg_241	Verify AP Impersonation works for 9130AP connected to eWLC	To verify AP Impersonation works for 9130AP connected to eWLC	Passed	
DNACJ234S_Reg_242	Verify AP Impersonation works for 4800AP connected to eWLC	To verify AP Impersonation works for 4800AP connected to eWLC	Passed	
DNACJ234S_Reg_243	Detect AP Impersonation using 9115AP in Flex Mode and verify details of AP Impersonation	To detect AP Impersonation using 9115AP in Flex Mode and to verify details of AP Impersonation	Passed	
DNACJ234S_Reg_244	Detect AP Impersonation using 9120AP in Flex Mode and verify details of AP Impersonation	To detect AP Impersonation using 9120AP in Flex Mode and to verify details of AP Impersonation	Passed	
DNACJ234S_Reg_245	Detect AP Impersonation using 9130AP in Flex Mode and verify details of AP Impersonation	To detect AP Impersonation using 9130AP in Flex Mode and to verify details of AP Impersonation	Passed	

DNACJ234S_Reg_246	Detect AP Impersonation using 4800AP in Flex Mode and verify details of AP Impersonation	To detect AP Impersonation using 4800AP in Flex Mode and to verify details of AP Impersonation	Passed	
DNACJ234S_Reg_247	Verify AP Impersonation details from Threat 360 View	To verify AP Impersonation details from Threat 360 View	Passed	
DNACJ234S_Reg_248	Verify High Threats based on the time interval	To verify High Threats based on the time interval	Passed	
DNACJ234S_Reg_249	Generate AP Impersonation Rogue report	To generate AP Impersonation Rogue report	Passed	
DNACJ234S_Reg_250	Export AP Impersonation Rogue report	To export AP Impersonation Rogue report	Passed	
DNACJ234S_Reg_251	Verify High Threats through map	To verify High Threats through map	Passed	
DNACJ234S_Reg_252	Create and verify Rogue Rules	To create and verify Rogue Rules	Passed	



## AP Reboot for Troubleshooting

Logical ID	Title	Description	Status	Defect ID
DNACJ234S_Reg_416	Selecting 9120 AP for reboot	To Verify the 9120 Ap rebooted or not	Passed	
DNACJ234S_Reg_417	Selecting 9130 AP for reboot	To Verify the 9130 Ap rebooted or not	Passed	
DNACJ234S_Reg_418	Selecting 9115 AP for reboot	To Verify the 9115 Ap rebooted or not	Passed	
DNACJ234S_Reg_419	Selecting 9105 AP for reboot	To Verify the 9105 Ap rebooted or not	Passed	
DNACJ234S_Reg_420	Selecting multiple AP's belonging to the same Controller	To Verify the Ap's rebooted or not while ap's connected to same controller	Passed	
DNACJ234S_Reg_421	Selecting multiple AP's belonging to different Controller	To Verify the Ap's rebooted or not while ap's connected to different controller	Passed	
DNACJ234S_Reg_422	Selecting EWC master AP for reboot	To Verify the EWC master Ap rebooted or not	Passed	
DNACJ234S_Reg_423	Selecting NON-AP device for reboot option	To Verify non-ap devices rebooted or not	Passed	
DNACJ234S_Reg_424	Selecting more than 200 Aps for Reboot	To Verify the Ap's selected or not beyond the max limit	Passed	
DNACJ234S_Reg_425	APs selected for reboot are unreachable	To verify unreachable ap's selected for reboot or not	Passed	
DNACJ234S_Reg_426	Selecting Flex connect AP for reboot	To verify Flex connect Ap reboot or not	Passed	
DNACJ234S_Reg_427	Ap's selected for reboot are already part of in-progress provision flow	To verify Ap reboot or not which is already part of in provision flow	Passed	

DNACJ234S_Reg_428	Selecting APs & unsupported device for reboot	To Verify error shown or not for unsupported devices	Passed	
DNACJ234S_Reg_429	AP selected for reboot with schedule now option selected in the scheduler side bar	To verify ap rebooted with schedule now option	Passed	
DNACJ234S_Reg_430	AP selected for reboot with schedule later option selected in the scheduler side bar	To verify ap rebooted with schedule later option	Passed	
DNACJ234S_Reg_431	Selecting un-provisioned AP for reboot	To verify un-provisioned ap rebooted or not	Passed	
DNACJ234S_Reg_432	Verifying ap 2.4 ghz radio configuration after ap reboot	To verify 2.4 ghz configuration changed or not after ap reboot	Passed	
DNACJ234S_Reg_433	Verifying ap 5 ghz radio configuration after ap reboot	To verify 5 ghz configuration changed or not after ap reboot	Passed	
DNACJ234S_Reg_434	Verifying security type of client after ap reboot	To verify security type configuration changed or not after ap reboot	Passed	
DNACJ234S_Reg_435	Ap selected for continuous reboot	To verify crash happen or not during continuous reboot	Passed	

## Assurance - Client 360 Usage Events

Logical ID	Title	Description	Status	Defect ID
DNACJ234S_Reg_208	Adding network devices in DNAC	To add network devices like switches, Controllers to DNAC and check if the network devices gets added to DNAC or not	Passed	
DNACJ234S_Reg_209	Connecting a Windows clients to a WLAN and check if the client health ,Active clients detail is shown in the wireless Clients dashlet	To connect a Window clients to the wlan created and check if the clients health is shown in the wireless client summary	Passed	
DNACJ234S_Reg_210	Connecting a Android clients to a WLAN and check if the client health ,Active clients detail is shown in the wireless Clients dashlet	To connect a Android clients to the wlan created and check if the clients health is shown in the wireless client summary	Passed	
DNACJ234S_Reg_211	Connecting a IOS clients to a WLAN and check if the client health ,Active clients detail is shown in the wireless Clients dashlet	To connect a IOS clients to the wlan created and check if the clients health is shown in the wireless client summary	Passed	
DNACJ234S_Reg_212	Connecting a Mac OS clients to a WLAN and check if the client health ,Active clients detail is shown in the wireless Clients dashlet	To connect a Mac OS clients to the wlan created and check if the clients health is shown in the wireless client summary	Passed	

DNACJ234S_Reg_213	Connecting a Wired client to a RLAN and check if the client health is shown in the wired Clients dashlet	To connect a clients to the rlan created and check if the clients health is shown in the wired client summary	Passed	CSCwc67263
DNACJ234S_Reg_214	Validating the client onboarding times in client health page	To validate the client onboarding times in client health page in DNAC assurance	Passed	
DNACJ234S_Reg_215	Validating the client connectivity RSSI in client health page	To validate the client connectivity RSSI in client health page in DNAC assurance	Passed	
DNACJ234S_Reg_216	Validating the client connectivity SNR in client health page	To validate the client connectivity RSSI in client health page in DNAC assurance	Passed	

# AP Usage and Client Breakdown Report

Logical ID	Title	Description	Status	Defect ID
DNACJ234S_Reg_121	Configuring DNAC with Network devices, clients, access points.	To configure DNAC with Network devices, clients, access points.	Passed	
DNACJ234S_Reg_122	Report generation using template	To do report generation using template	Passed	
DNACJ234S_Reg_123	Validate details in generated report	To validate details in generated report	Passed	
DNACJ234S_Reg_124	Adding multiple locations during report generation.	To add multiple locations during report generation.	Passed	
DNACJ234S_Reg_125	Verify client details in generated report.	To verify client details in generated report.	Passed	
DNACJ234S_Reg_126	Connect Android client and check if it is shown in the generated report.	To connect Android client and check if it is shown in the generated report.	Passed	
DNACJ234S_Reg_127	Connect iPhone client and check if it is shown in the generated report.	To connect iPhone client and check if it is shown in the generated report.	Passed	
DNACJ234S_Reg_128	Connect Mac client and check if it is shown in the generated report.	To connect Mac client and check if it is shown in the generated report.	Passed	
DNACJ234S_Reg_129	Check details of connected clients to 2.4Ghz & 5Ghz bands.	To check details of connected clients to 2.4Ghz & 5Ghz bands.	Passed	
DNACJ234S_Reg_130	Check device details with bad health in generated report.	To check device details with bad health in generated report.	Passed	
DNACJ234S_Reg_131	Check if device inventory is updated in report with addition of network devices/clients.	To check if device inventory is updated in report with addition of network devices/clients.	Passed	

DNACJ234S_Reg_132	Generate report with different time range values.	To generate report with different time range values.	Passed	
DNACJ234S_Reg_133	Generate report with different custom time range values.	To generate report with different custom time range values.	Failed	CSCwd10801
DNACJ234S_Reg_134	Schedule report generation using template	To schedule report generation using template	Passed	
DNACJ234S_Reg_135	Schedule recurring report generation using template	To schedule recurring report generation using template	Passed	
DNACJ234S_Reg_136	Email report option during report generation	To check Email report option during report generation	Passed	
DNACJ234S_Reg_137	Webhook notification during report generation	To check webhook notification during report generation	Passed	
DNACJ234S_Reg_138	Edit config of generated report template	To edit config of generated report template	Passed	
DNACJ234S_Reg_139	Duplicate report option using existing report	To duplicate report option using existing report	Passed	
DNACJ234S_Reg_140	Trigger report generation using Run now option	To trigger report generation using Run now option	Passed	
DNACJ234S_Reg_141	Delete report using delete option under action tab	To delete report using delete option under action tab	Passed	
DNACJ234S_Reg_142	Test report with breakdown by VLAN	To test report with breakdown by VLAN	Passed	
DNACJ234S_Reg_143	Test report with breakdown by SSID	To test report with breakdown by SSID	Passed	
DNACJ234S_Reg_144	Test report with breakdown by Vendor	To test report with breakdown by Vendor	Passed	
DNACJ234S_Reg_145	Test report with breakdown by OS type	To test report with breakdown by OS type	Passed	

DNACJ234S_Reg_146	Test report sort by 'Client Count'	To test report sort by 'Client Count'	Passed	
DNACJ234S_Reg_147	Test report schedule function	To test report schedule function	Passed	
DNACJ234S_Reg_148	Verify report data accuracy with different type of clients	To verify report data accuracy with different type of APs	Passed	

## Assurance workflow changes to support AP Refresh

Logical ID	Title	Description	Status	Defect ID
DNACJ234S_Reg_149	Provision network devices in DNAC using Inventory & PNP flow	To provision network devices in DNAC using Inventory & PNP flow	Passed	
DNACJ234S_Reg_150	Perform AP Refresh flow in DNAC and verify the details	To perform AP Refresh flow in DNAC and verify the details	Passed	
DNACJ234S_Reg_151	Check the report after Ap Refresh process is done	To verify AP details in report after ap replacement	Passed	
DNACJ234S_Reg_152	AP Refresh process using different model AP(9115 to 9130)	To verify AP Refresh with different AP model	Passed	
DNACJ234S_Reg_153	Verify AP refresh works fine for all model APs	Verify AP refresh works fine for all model APs	Passed	
DNACJ234S_Reg_154	Choosing new AP from same controller for AP refresh	To choose new AP from same controller for AP refresh	Passed	
DNACJ234S_Reg_155	Choosing new AP from different controller for AP refresh	To choose new AP from different controller for AP refresh	Passed	
DNACJ234S_Reg_156	Perform AP refresh process for bulk amount of AP's	To perform AP refresh process for bulk amount of AP's	Passed	



## Busiest AP

Logical ID	Title	Description	Status	Defect ID
DNACJ234S_Reg_573	Error message check	To check whether error message is popped if 'Number of Aps' and 'Sort by' filters are left blank	Passed	
DNACJ234S_Reg_574	Default check	To create a report with default value	Passed	
DNACJ234S_Reg_575	Test report with 'Global' for location filter	To test report with 'Global' for location filter	Passed	
DNACJ234S_Reg_576	Test report with single area for location filter	To test report with single area for location filter	Passed	
DNACJ234S_Reg_577	Test report with multiple areas for location filter	To test report with multiple areas for location filter	Passed	
DNACJ234S_Reg_578	Test report with single building for location filter	To test report with single building for location filter	Passed	
DNACJ234S_Reg_579	Test report with multiple buildings for location filter	To test report with multiple buildings for location filter	Passed	
DNACJ234S_Reg_580	Test WLC filter-single	To test WLC filter-single	Passed	
DNACJ234S_Reg_581	Test WLC filter-multiple	To test WLC filter-multiple	Passed	
DNACJ234S_Reg_582	Test with both WLC and Location filter	To test with both WLC and Location filter	Passed	
DNACJ234S_Reg_583	Test report with mixed area, building, floor for location filter	To test report with mixed area, building, floor for location filter	Passed	
DNACJ234S_Reg_584	Test report with top 10 APs	To test report with top 10 APs	Passed	
DNACJ234S_Reg_585	Test report with top 25 APs	To test report with top 25 APs	Passed	
DNACJ234S_Reg_586	Test report with top 50 APs	To test report with top 50 APs	Passed	

DNACJ234S_Reg_587	Test report with All APs	To test report with All APs	Passed	
DNACJ234S_Reg_588	Test report sort by 'AP Name'	To test report sort by 'AP Name'	Passed	
DNACJ234S_Reg_589	Test report sort by 'Rx Utilization'	To test report sort by 'Rx Utilization'	Passed	
DNACJ234S_Reg_590	Test report sort by 'Tx Utilization'	To test report sort by 'Tx Utilization'	Passed	
DNACJ234S_Reg_591	Test report sort by 'Radio Utilization'	To test report sort by 'Radio Utilization'	Passed	
DNACJ234S_Reg_592	Test report sort by 'Client Count'	To test report sort by 'Client Count'	Passed	
DNACJ234S_Reg_593	Test report schedule function	To test report schedule function	Passed	

## Busiest Client Report

Logical ID	Title	Description	Status	Defect ID
DNACJ234S_Reg_775	Default value check	To check default value	Passed	
DNACJ234S_Reg_776	Test report with 'Global' for location filter	To test report with 'Global' for location filter	Passed	
DNACJ234S_Reg_777	Test report with single area for location filter	To test report with single area for location filter	Passed	
DNACJ234S_Reg_778	Test report with multiple areas for location filter	To test report with multiple areas for location filter	Passed	
DNACJ234S_Reg_779	Test report with single building for location filter	To test report with single building for location filter	Passed	
DNACJ234S_Reg_780	Test report with multiple buildings for location filter	To test report with multiple buildings for location filter	Passed	
DNACJ234S_Reg_781	Test report with single floor for location filter	To test report with single floor for location filter	Passed	
DNACJ234S_Reg_782	Test report with multiple floors for location filter	To test report with multiple floors for location filter	Passed	
DNACJ234S_Reg_783	Test report with mixed area, building, floor for location filter	To test report with mixed area, building, floor for location filter	Passed	
DNACJ234S_Reg_784	Test WLC filter-single	To test WLC filter-single	Passed	
DNACJ234S_Reg_785	Test WLC filter-multiple	To test WLC filter-multiple	Passed	
DNACJ234S_Reg_786	Test with both WLC and Location filter	To test with both WLC and Location filter	Passed	
DNACJ234S_Reg_787	Test report with only one field for content	To test report with only one field for content	Passed	

DNACJ234S_Reg_788	Test report with subset field for content	To test report with subset field for content	Passed	
DNACJ234S_Reg_789	Test report sort by 'client Name'	To test report sort by 'client Name'	Passed	
DNACJ234S_Reg_790	Test report sort by 'Rx Utilization'	To test report sort by 'Rx Utilization'	Passed	
DNACJ234S_Reg_791	Test report sort by 'Tx Utilization'	To test report sort by 'Tx Utilization'	Passed	
DNACJ234S_Reg_792	Test report sort by 'Channel Utilization'	To test report sort by 'Channel Utilization'	Passed	
DNACJ234S_Reg_793	Test report sort by 'Client Count'	To test report sort by 'Client Count'	Passed	
DNACJ234S_Reg_794	Test report schedule function	To test report schedule function	Passed	
DNACJ234S_Reg_795	Verify report data accuracy with different type of clients	To verify report data accuracy with different type of clients	Passed	
DNACJ234S_Reg_796	Test with Client connecting to 2 radios	To test with Client connecting to 2 radios	Passed	
DNACJ234S_Reg_797	Test with Client connecting to 3 radios	To test with Client connecting to 3 radios	Passed	
DNACJ234S_Reg_798	Verify report data accuracy with client radio change band within an hour	To verify report data accuracy with client radio change band within an hour	Passed	
DNACJ234S_Reg_799	Verify report data accuracy with client radio change band more than an hour	To verify report data accuracy with client radio change band more than an hour	Passed	
DNACJ234S_Reg_800	Verify report data accuracy with client radio change band more than a day	To verify report data accuracy with client radio change band more than a day	Passed	

## Called Station ID

Logical ID	Title	Description	Status	Defect ID
DNACJ234S_Reg_301	Configure radius-server wireless attribute call station id for authentication and accounting with "ap-name-ssid"	To Configure radius-server wireless attribute call station id for authentication and accounting with "ap-name-ssid"	Passed	
DNACJ234S_Reg_302	Configure radius-server wireless attribute call station id for authentication and accounting with "ap-ethmac-ssid"	To Configure radius-server wireless attribute call station id for authentication and accounting with "ap-ethmac-ssid"	Passed	
DNACJ234S_Reg_303	Configure radius-server wireless attribute call station id for authentication and accounting with "ap-group-name"	To Configure radius-server wireless attribute call station id for authentication and accounting with "ap-group-name"	Passed	
DNACJ234S_Reg_304	Configure radius-server wireless attribute call station id for authentication and accounting with "ap-macaddress-ssid"	To Configure radius-server wireless attribute call station id for authentication and accounting with "ap-macaddress-ssid"	Passed	
DNACJ234S_Reg_305	Configure radius-server wireless attribute call station id for authentication and accounting with "ap-macaddress"	To Configure radius-server wireless attribute call station id for authentication and accounting with "ap-macaddress"	Passed	
DNACJ234S_Reg_306	Configure radius-server wireless attribute call station id for authentication and accounting with "ap-ethmac-only"	To Configure radius-server wireless attribute call station id for authentication and accounting with "ap-ethmac-only"	Passed	

DNACJ234S_Reg_307	Configure radius-server wireless attribute call station id for authentication and accounting with “ap-location”	To Configure radius-server wireless attribute call station id for authentication and accounting with “ap-location”	Passed	
DNACJ234S_Reg_308	Configure radius-server wireless attribute call station id for authentication and accounting with “ap-name-ssid” with different networks	To Configure radius-server wireless attribute call station id for authentication and accounting with “ap-name-ssid” with different networks	Passed	
DNACJ234S_Reg_309	configure different servers for authentication and accounting of attribute	To configure different servers for authentication and accounting of attribute	Passed	
DNACJ234S_Reg_310	configuring both AAA and local authentication	To configuring both AAA and local authentication	Passed	
DNACJ234S_Reg_311	Verify Downgrade and upgrade impacted while configuring called station id for authentication and accounting	To verify Downgrade and upgrade impacted while configuring called station id for authentication and accounting	Passed	
DNACJ234S_Reg_312	Verify HA active to standby config impacts when configuring called station id for authentication and accounting	To verify config impact HA active to standby when configuring called station id for authentication and accounting	Passed	
DNACJ234S_Reg_313	Verify active to standby to active config impact when configuring called station id for authentication and accounting	To verify config impact when active to standby to active when configuring called station id for authentication and accounting	Passed	

DNACJ234S_Reg_314	Verify by changing mac address format in attribute and check config impact "radius-server attribute 31 mac format ? "	To Verify the changing of mac address format in attribute and check config	Passed	
DNACJ234S_Reg_315	Configure radius-server wireless attribute call station id for authentication and accounting with "ap-name-ssid "with mac filtering configured in AAA	To Configure mac filtering and verify client connectivity	Passed	
DNACJ234S_Reg_316	Verify Editing changes are applying while configuring radius-server wireless attribute call station id for authentication and accounting with "ap-name "with mac filtering configured in AAA	To Verify Editing changes are applying while configuring radius-server wireless attribute call station id for authentication and accounting with "ap-name"	Passed	
DNACJ234S_Reg_317	Configure radius-server wireless attribute call station id for authentication and accounting with "ap-name-ssid "with Mobility configuration	Configure radius-server wireless attribute call station id for authentication and accounting with "ap-name-ssid "with Mobility configuration	Passed	

## Display AP Ethernet MAC address in Inventory and details page

Logical ID	Title	Description	Status	Defect ID
DNACJ234S_Reg_561	Verify AP Location and AP Ethernet Mac Column in Inventory/Provision Table	To verify AP Location and AP Ethernet Mac Column in Inventory/Provision Table	Passed	
DNACJ234S_Reg_562	Verify the Ap location and mac address on the AP Page	To verify the Ap location and mac address on the AP Page	Passed	
DNACJ234S_Reg_563	Verify the ap location and mac is same on the AP UI page and UI inventory table	To verify the ap location and mac is same on the AP UI page and UI inventory table	Passed	
DNACJ234S_Reg_564	Verify ap location and mac value on UI Inventory Page with device, at the time of ap provisioning	To verify ap location and mac value on UI Inventory Page with device, at the time of ap provisioning	Passed	
DNACJ234S_Reg_565	Verify ap location value on UI Inventory Page with device, at the time of ap re-provisioning	To verify ap location value on UI Inventory Page with device, at the time of ap re-provisioning	Passed	
DNACJ234S_Reg_566	Change ap location value to custom string on the device, verify at the time of provisioning	To change ap location value to custom string on the device, verify at the time of provisioning	Passed	
DNACJ234S_Reg_567	Change ap location value to custom string on the device, verify at the time of AP re-provisioning	To change ap location value to custom string on the device, verify at the time of AP re-provisioning	Passed	
DNACJ234S_Reg_568	Change ap location value to default-location on the device, verify at the time of AP provisioning	To change ap location value to default-location on the device, verify at the time of AP provisioning	Passed	



DNACJ234S_Reg_569	Verify AP mac address in Topology view	To verify AP mac address in Topology view	Failed	CSCwc91913, CSCwd29393
DNACJ234S_Reg_570	Export inventory page data and verify AP location and mac address details	To export inventory page data and to verify AP location and mac address details	Passed	
DNACJ234S_Reg_571	Verify bulk APs location and mac address details in inventory page	To verify bulk APs location and mac address details in inventory page	Passed	
DNACJ234S_Reg_572	Verify AP Location and AP MAC column other than Unified APs	To verify AP Location and AP MAC column other than Unified APs	Passed	

## DNA Dashboard for Open RRM

Logical ID	Title	Description	Status	Defect ID
DNACJ234S_Reg_491	Configure Open RRM and enable connectivity to kairos cloud	To configure Open RRM and enable connectivity to kairos cloud	Passed	
DNACJ234S_Reg_492	Configure Open RRM and test for 5ghz band	To configure Open RRM and for 5ghz band	Passed	
DNACJ234S_Reg_493	Configure Open RRM and test for 2.4ghz band	To configure Open RRM and test for 2.4ghz band	Passed	
DNACJ234S_Reg_494	Configure Open RRM with WPA3 security	To configure Open RRM with WPA3 security	Passed	
DNACJ234S_Reg_495	Configure Open RRM with WPA2 security	To configure Open RRM with WPA2 security	Passed	
DNACJ234S_Reg_496	Configure Open RRM and test with android client	To configure Open RRM and test with android client	Passed	
DNACJ234S_Reg_497	Configure Open RRM and test with iPhone client	To configure Open RRM and test with iPhone client	Passed	
DNACJ234S_Reg_498	Configure Open RRM and test with Mac client	To configure Open RRM and test with Mac client	Passed	
DNACJ234S_Reg_499	Configure Open RRM and test with Surface client	To configure Open RRM and test with Surface client	Passed	
DNACJ234S_Reg_500	Configure Open RRM and test with Windows client	To configure Open RRM and test with Windows client	Passed	
DNACJ234S_Reg_501	Configure Open RRM and test with only FRA enabled	To configure Open RRM and test with only FRA enabled	Passed	
DNACJ234S_Reg_502	Configure Open RRM and test with only DCA enabled	To configure Open RRM and test with only DCA enabled	Passed	

DNACJ234S_Reg_503	Configure Open RRM and test with only TPC enabled	To configure Open RRM and test with only TPC enabled	Passed	
DNACJ234S_Reg_504	Configure Open RRM and test with only DBS enabled	To configure Open RRM and test with only DBS enabled	Passed	
DNACJ234S_Reg_505	Configure Open RRM and test with different RF algorithm combinations	To configure Open RRM and test with different RF algorithm combinations	Passed	
DNACJ234S_Reg_506	Configure Open RRM and test with manually assigned channel bandwidth and channel nos	To configure Open RRM and test with manually assigned channel bandwidth and channel nos	Passed	
DNACJ234S_Reg_507	Configure Open RRM and test with 9115, 9120, 9130 AP	To configure Open RRM and test with 9115, 9120, 9130 AP	Passed	
DNACJ234S_Reg_508	Configure Open RRM and test with 4800 AP	To configure Open RRM and test with 4800 AP	Passed	CSCwc63242
DNACJ234S_Reg_509	Configure Open RRM and test with eWLC HA	To configure Open RRM and test with eWLC HA	Passed	
DNACJ234S_Reg_510	Configure Open RRM and test with EWC	To configure Open RRM and test with EWC	Passed	
DNACJ234S_Reg_511	Monitor RRM parameters and data over different time range	To monitor RRM parameters and data over different time range	Passed	
DNACJ234S_Reg_512	Monitor RRM parameters and data over 2.4/5Ghz	To monitor RRM parameters and data over 2.4/5Ghz	Passed	
DNACJ234S_Reg_513	Monitor spatial density, power distribution and other parameters based on the relevant device	To monitor spatial density, power distribution and other parameters based on the relevant device	Passed	

## Download option for config preview

Logical ID	Title	Description	Status	Defect ID
DNACJ234S_Reg_546	Adding site and provisioning device	To check whether user able to create site and provision device	Passed	
DNACJ234S_Reg_547	Provisioning device using "now" option	To check whether the user able to provision device using "now" option	Passed	
DNACJ234S_Reg_548	Provisioning device using "Later" option	To check whether the user able to provision device using "Later" option	Passed	
DNACJ234S_Reg_549	Provisioning device using "Generate configuration preview" option	To check whether the user able to provision device using "Generate configuration preview" option	Passed	
DNACJ234S_Reg_550	Check the status for download option for config preview	To check the status for download option for config preview	Passed	
DNACJ234S_Reg_551	Positioning AP's on site with different radios	To check AP's positioning after positioned with different radios	Passed	
DNACJ234S_Reg_552	Enable the Application telemetry and check the audit logs	To enable the Application telemetry and check the audit logs	Passed	
DNACJ234S_Reg_553	Disable the Application telemetry and check the audit logs	To Disable the Application telemetry and check the audit logs	Passed	
DNACJ234S_Reg_554	Reprovision the device and check the config preview	To Reprovision the device and check the config preview	Passed	
DNACJ234S_Reg_555	Update the telemetry setting and check the audit logs	To Update the telemetry setting and check the audit logs	Passed	

DNACJ234S_Reg_556	Checking the config preview configuration in HA setup	To check the config preview configurations in DNAC during HA	Passed	
DNACJ234S_Reg_557	Checking the config preview configuration in HA setup after reprovision the same device	To Check the config preview configuration in HA setup after reprovision the same device	Passed	
DNACJ234S_Reg_558	check the config preview option with no configuration selected	To check the config preview configurations with no configuration selected	Passed	
DNACJ234S_Reg_559	Provisioning eWLC using "Generate configuration preview" option	To check whether the user able to provision eWLC using "Generate configuration preview "option	Passed	
DNACJ234S_Reg_560	CLI template push and the config preview during provision	To check the config preview configurations after pushing cli template	Passed	

## Enable CLI Configuration Preview for Update Telemetry Settings and Site Assignment

Logical ID	Title	Description	Status	Defect ID
DNACJ234S_Reg_609	Verify configuration preview details while assigning site	To verify configuration preview details while assigning site	Passed	
DNACJ234S_Reg_610	Verify configuration preview details while updating telemetry settings	To verify configuration preview details while updating telemetry settings	Passed	
DNACJ234S_Reg_611	Check if the site assignment configuration previewed is not pushed to the device	To verify if the site assignment configuration previewed is not pushed to the device	Passed	
DNACJ234S_Reg_612	Check if the telemetry configuration previewed is not pushed to the device	To verify if the telemetry configuration previewed is not pushed to the device	Passed	
DNACJ234S_Reg_613	Check if the work items details corresponds to specific device	To verify if the work items details corresponds to specific device	Passed	
DNACJ234S_Reg_614	Verify configuration preview details for 9800L	To verify configuration preview details for 9800L	Passed	
DNACJ234S_Reg_615	Verify configuration preview details for 9800CL	To verify configuration preview details for 9800CL	Passed	
DNACJ234S_Reg_616	Verify configuration preview details for 9800-40/80	To verify configuration preview details for 9800-40/80	Passed	
DNACJ234S_Reg_617	Verify configuration preview details for EWC	To verify configuration preview details for EWC	Passed	

DNACJ234S_Reg_618	Verify configuration preview details for EWC HA	To verify configuration preview details for EWC HA	Passed	
DNACJ234S_Reg_619	Verify configuration preview details for 9800 HA	To verify configuration preview details for 9800 HA	Passed	
DNACJ234S_Reg_620	Check if configuration preview option is enabled for unsupported devices	To check if configuration preview option is enabled for unsupported devices	Passed	
DNACJ234S_Reg_621	Check if the workflow doesn't push configuration after device reload	To check if the workflow doesn't push configuration after device reload	Passed	

## Endpoints 360

Logical ID	Title	Description	Status	Defect ID
DNACJ234S_Reg_54	Adding different network devices in DNAC	To add network devices like switches, Controllers to DNAC and check if the network devices gets added to DNAC or not	Passed	
DNACJ234S_Reg_55	Connecting a Windows endpoint to a WLAN and check the client health	To connect a Window endpoint to the wlan created and check if the clients health is shown in the wireless client summary	Passed	
DNACJ234S_Reg_56	Connecting a Android endpoint to a WLAN and check the client health	To connect a Android endpoint to the wlan created and check if the clients health is shown in the wireless client summary	Passed	
DNACJ234S_Reg_57	Connecting a IOS endpoint to a WLAN and check the client health	To connect a IOS endpoint to the wlan created and check if the clients health is shown in the wireless client summary	Passed	
DNACJ234S_Reg_58	Connecting a Surface Go endpoint to a WLAN and check the client health	To connect a Surface Go endpoint to the wlan created and check if the clients health is shown in the wireless client summary	Passed	



DNACJ234S_Reg_59	Connecting a iPhone endpoint to a WLAN and check the client health	To connect a iPhone endpoint to the wlan created and check if the clients health is shown in the wireless client summary	Passed	
DNACJ234S_Reg_60	Connecting a Mac OS endpoint to a WLAN and check the client health	To connect a Mac OS endpoint to the wlan created and check if the clients health is shown in the wireless client summary	Passed	
DNACJ234S_Reg_61	Setting the timeline chart for various endpoints	To set the time line chart for various endpoints	Passed	
DNACJ234S_Reg_62	Checking the client onboarding time for various end points	To check the client onboarding time for various endpoints	Passed	
DNACJ234S_Reg_63	Verifying the Device info ,Connectivity & RF Details for various clients	To verify the device info, connectivity & Rf details for various clients	Passed	
DNACJ234S_Reg_64	Checking the deleted client details in DNAC	To check the deleted client details in DNAC	Passed	
DNACJ234S_Reg_65	Validating the RSSI & SNR values for various end point	To Validate the RSSI & SNR values for various end points	Passed	
DNACJ234S_Reg_66	Check the client roaming times in client health dashboard in Assurance page	To check the client roaming times in client health page and check if the details show are correct.	Passed	
DNACJ234S_Reg_67	Validating the endpoint details in DNAC cloud	To validate the endpoint details in DNAC cloud	Passed	

## Enhancements on AP config flow

Logical ID	Title	Description	Status	Defect ID
DNACJ234S_Reg_731	Modify radio mode and validate details	Verify modifying the Radio mode (all possible mode changes from each mode)	Passed	
DNACJ234S_Reg_732	Configure workflow and verify details in skip to summary page	Verify "Skip to Summary" option is present in the 6 GHz config page	Passed	
DNACJ234S_Reg_733	Configure power assignment values and validate the details	Verify Power Assignment values for Custom options in the 6 GHz config page	Passed	
DNACJ234S_Reg_734	Configure negative value for power assignment	Verify Power Assignment negative values for Custom options in the 6 GHz config page	Passed	
DNACJ234S_Reg_735	Configure channel assignment values	Verify Channel Assignment values for Custom options in the 6 GHz config page	Passed	
DNACJ234S_Reg_736	Configure channel width values in 6 GHz config page	Verify Channel Width values in the 6 GHz config page	Passed	
DNACJ234S_Reg_737	Configure channel assignment values and width combinations	Verify the Channel assignment + width combinations are in accordance with that observed in the device	Passed	
DNACJ234S_Reg_738	Configure Azimuth values for 6GHz config page	Verify Azimuth values in the 6 GHz config page	Passed	
DNACJ234S_Reg_739	Configure Elevation values and validate details	Verify Elevation values in the 6 GHz config page	Passed	

DNACJ234S_Reg_740	Configure workflow and verify review option	Verify Review option in the 6 GHz config page	Passed	
DNACJ234S_Reg_741	Configure workflow and verify back/next buttons behaviour	Verify Back/Next buttons behave as expected in the 6 GHz config page	Passed	
DNACJ234S_Reg_742	Configure workflow and verify resume/cancel options during provision now	Verify Resume/Cancel options of workflow after creation on provisioning now	Passed	
DNACJ234S_Reg_743	Configure workflow and verify resume/cancel options during provision schedule time	Verify Resume/Cancel options of workflow after creation on provisioning at specified time	Passed	
DNACJ234S_Reg_744	Add different Aps associate with different controllers and validate details	Verify 6 GHz config page works fine for APs across same and multiple controllers, varying platforms	Passed	
DNACJ234S_Reg_745	Configure 6GHZ config page and verify other pages in workflow	Verify 6 GHz configurations are not affected by other configurations in the workflow	Passed	
DNACJ234S_Reg_746	Add 6GHz Aps and non-6GHZ ap and verify workflow	Verify 6 GHz configs through workflow do not impact the APs in any way for non-6 GHz APs (different model/platform)	Passed	
DNACJ234S_Reg_747	Configure workflow and verify values in floor map	Verify values set through workflow are reflected in the floor map	Passed	
DNACJ234S_Reg_748	Monitor admin status in RF profile during workflow	Verify how changes made to admin status in RF profile is reflected in the workflow	Passed	

DNACJ234S_Reg_749	Configure workflow for flex connect Aps	Verify the workflow changes in Flex connect mode of the APs (6 and non-6 GHz)	Passed	
DNACJ234S_Reg_750	Configure workflow for sniffer mode Aps	Verify the workflow changes in Sniffer mode of the APs (6 and non-6 GHz)	Passed	
DNACJ234S_Reg_751	Delete Ap and validate the workflow	Delete the AP from Inventory and observe in dissociated state	Passed	
DNACJ234S_Reg_752	Configure workflow for EWC	Verify workflow for EWC device	Passed	

## Exporting Assurance Pages - Overall Health, Network Health and Client Health

Logical ID	Title	Description	Status	Defect ID
DNACJ234S_Reg_355	Assurance health Overall Page - export dashboard	To export dashboard data from Assurance Overall health page	Passed	
DNACJ234S_Reg_356	Export dashboard after changing time period	To change time interval in overall page and export data	Passed	
DNACJ234S_Reg_357	Network Page - Edit dashboard	To Network Edit dashboard and rearrange/add option	Passed	
DNACJ234S_Reg_358	Network Page - Export dashboard	To Export dashboard in Network page	Passed	
DNACJ234S_Reg_359	Network Page - Time interval Modifications	To change time interval in Network page and export data	Passed	
DNACJ234S_Reg_360	Network health -Export dashboard for specific location	To Export dashboard for specific location in Network health page	Passed	
DNACJ234S_Reg_361	Network health -Export Network latest report	To Export Network latest report	Passed	
DNACJ234S_Reg_362	Network health -Export Network trend report	To Export Network trend report	Passed	
DNACJ234S_Reg_363	Edit Network devices Column and export dashboard	To Edit Network devices Column and export dashboard	Passed	
DNACJ234S_Reg_364	Increase Network devices to be shown by varying size and export dashboard	To increase Network devices to be shown by varying size and export dashboard	Passed	
DNACJ234S_Reg_365	Client- Edit dashboard	To Edit dashboard in Client page and make modifications	Passed	

DNACJ234S_Reg_366	Client -Export dashboard	To Export client dashboard and verify all data are properly exported	Passed	
DNACJ234S_Reg_367	Client tab- sort by Time interval	To sort based on Time interval and verify data is displayed for certain period of time	Passed	
DNACJ234S_Reg_368	Client health -Export dashboard for specific location	To Export dashboard for specific location	Passed	
DNACJ234S_Reg_369	Client tab- sort by SSID and export dashboard	To sort using SSID and export dashboard	Passed	
DNACJ234S_Reg_370	Client tab- sort by radio and export dashboard	To sort using radio and export dashboard	Passed	
DNACJ234S_Reg_371	Client health -Export Network latest report	To Export Network latest report	Passed	
DNACJ234S_Reg_372	Client health -Export Network trend report	To Export Network trend report	Passed	
DNACJ234S_Reg_373	Edit Client devices Column and export dashboard	To Edit Client devices Column and export dashboard	Passed	
DNACJ234S_Reg_374	Increase Client devices to be shown by varying size and export dashboard	To Increase Client devices to be shown by varying size and export dashboard	Passed	
DNACJ234S_Reg_375	Wifi-6: Edit dashboard	To Edit dashboard in Wi-Fi 6 page	Passed	
DNACJ234S_Reg_376	Wifi-6: Export dashboard	To Export dashboard in Wifi-6 page	Passed	
DNACJ234S_Reg_377	Wifi-6: sort by radio and Export dashboard	To sort by radio and Export dashboard in Wifi-6 page	Passed	
DNACJ234S_Reg_378	Wifi-6: sort by ssid and Export dashboard	To sort by ssid and Export dashboard in Wifi-6 page	Passed	

# Health Analytics

Logical ID	Title	Description	Status	Defect ID
DNACJ234S_Reg_20	Health Analytics - RSSI for 9120 AP	To Verify the RSSI values in associating clients which is connected 9120 AP	Passed	
DNACJ234S_Reg_21	Health Analytics - RSSI for 9130 AP	To Verify the RSSI values in associating clients which is connected 9130 AP	Passed	
DNACJ234S_Reg_22	Health Analytics - RSSI for 9115 AP	To Verify the RSSI values in associating clients which is connected 9115 AP	Passed	
DNACJ234S_Reg_23	Health Analytics - RSSI for 9105 AP	To Verify the RSSI values in associating clients which is connected 9105 AP	Passed	
DNACJ234S_Reg_24	Health Analytics - SNR for 9120 AP	To Verify the SNR values in associating clients	Passed	CSCwc90088
DNACJ234S_Reg_25	Health Analytics - SNR for 9130 AP	To Verify the SNR values in associating clients	Passed	
DNACJ234S_Reg_26	Health Analytics - SNR for 9115AP	To Verify the SNR values in associating clients	Passed	
DNACJ234S_Reg_27	Health Analytics - SNR for 9105 AP	To Verify the SNR values in associating clients	Passed	
DNACJ234S_Reg_28	Health Analytics -for Inter Roaming	To Verify the Ap's details by the roaming scenario	Passed	
DNACJ234S_Reg_29	Health Analytics -for Intra Roaming	To Verify the Ap's details by the roaming scenario	Passed	
DNACJ234S_Reg_30	Health Analytics -for IRCM Roaming	To Verify the Ap's details by the roaming scenario	Passed	CSCwc66054
DNACJ234S_Reg_31	Health Analytics-Client Count by SSID	To verify the details of client based on SSID	Passed	

DNACJ234S_Reg_32	Health Analytics- Windows Onboarding Times	To verify the client onboard details	Passed	
DNACJ234S_Reg_33	Health Analytics- Android Onboarding Times	To verify the client onboard details	Passed	
DNACJ234S_Reg_34	Health Analytics- mac Onboarding Times	To verify the client onboard details	Passed	
DNACJ234S_Reg_35	Health Analytics - Ap Up Down	To verify the AP's UP or down status	Passed	
DNACJ234S_Reg_36	Health Analytics - Client Count	To verify the client count by Ap's association	Passed	
DNACJ234S_Reg_37	Health Analytics - Device Reachability	To verify the Device status of reachable/unreachable state	Passed	
DNACJ234S_Reg_38	Health Analytics - Ap Interference	To verify the Ap's Interference performance	Passed	
DNACJ234S_Reg_39	Generate the Report for Health Analytics	To verify the details in generated reports.	Passed	



## Inventory - Support for Maintenance mode

Logical ID	Title	Description	Status	Defect ID
DNACJ234S_Reg_397	Adding different network devices in DNAC	To add network devices like switches, Controllers to DNAC and check if the network devices gets added to DNAC or not	Passed	
DNACJ234S_Reg_398	Provisioning a the network device through inventory page via DNAC	To provision the network device via DNAC through the option in inventory page	Passed	
DNACJ234S_Reg_399	Scheduling Maintenance for eWLC 9800-40 device	To schedule Maintenance for the eWLC 9800-40 device and check if the device is moved to Maintenance mode or not	Passed	
DNACJ234S_Reg_400	Scheduling Maintenance for eWLC 9800-80 device	To schedule Maintenance for the eWLC 9800-80 device and check if the device is moved to Maintenance mode or not	Passed	
DNACJ234S_Reg_401	Scheduling Maintenance for eWLC 9800-L device	To schedule Maintenance for the eWLC 9800-L device and check if the device is moved to Maintenance mode or not	Passed	
DNACJ234S_Reg_402	Scheduling Maintenance for eWLC 9800-CL device	To schedule Maintenance for the eWLC 9800-CL device and check if the device is moved to Maintenance mode or not	Passed	

DNACJ234S_Reg_403	Configuring eWLC AP to Maintenance state and check the behaviour	To schedule a Maintenance for the AP connected in eWLC and check if the Maintenance is applied for it or not	Passed	
DNACJ234S_Reg_404	Configuring EWC AP to Maintenance state and check the behaviour	To schedule a Maintenance for the AP connected in EWC and check if the Maintenance is applied for it or not	Passed	
DNACJ234S_Reg_405	Configuring Maintenance state for device with end times given in hours	To make a network device to maintenance state with end of maintenance in hours	Passed	
DNACJ234S_Reg_406	Configuring Maintenance state for device with end times in date and time	To make a network device to maintenance state with end of maintenance in days and hours	Passed	
DNACJ234S_Reg_407	Maintenance mode with recurrence as daily	To schedule the maintenance for the eWLC device with recurrence as daily	Passed	
DNACJ234S_Reg_408	Maintenance mode with recurrence as Weekly	To schedule the maintenance for the eWLC device with recurrence as Weekly and check if the mode is activated the number of times specified	Passed	
DNACJ234S_Reg_409	Scheduling Maintenance for eWLC device in HA mode	To schedule Maintenance for the eWLC device which has HA pair in active and check if the device is moved to Maintenance mode or not	Passed	

DNACJ234S_Reg_410	Schedule Maintenance for the eWLC device which is not reached from DNAC	To schedule Maintenance for the eWLC device which is not reachable from DNAC and check if the device is moved to Maintenance mode or not	Passed	
DNACJ234S_Reg_411	Schedule Maintenance for the EWC device which is not reached from DNAC	To schedule Maintenance for the EWC device which is not reachable from DNAC and check if the device is moved to Maintenance mode or not	Passed	
DNACJ234S_Reg_412	Scheduling Maintenance for the eWLC device for which Netconf is given wrongly	To scheduling maintenance for the eWLC device for which Netconf is given wrongly	Passed	
DNACJ234S_Reg_413	Scheduling Maintenance for the EWC device for which Netconf is given wrongly	To scheduling maintenance for the EWC device for which Netconf is given wrongly	Passed	
DNACJ234S_Reg_414	Managing the eWLC device in the Maintenance mode	To managing the eWLC device in the Maintenance mode	Passed	
DNACJ234S_Reg_415	Managing the EWC device in the Maintenance mode	To managing the EWC device in the Maintenance mode	Passed	

## MAC Randomization

Logical ID	Title	Description	Status	Defect ID
DNACJ234S_Reg_274	Add AAA server in DNAC and enable pxGrid in ISE	To Add AAA Policy server in DNAC and enable pxGrid in ISE	Passed	
DNACJ234S_Reg_275	Provision EWLC to DNAC and join client with burned-in MAC	To Provision EWLC to DNAC and join client with burned-in MAC	Passed	
DNACJ234S_Reg_276	Join client with RCM in EWLC and verify denial reason in assurance	To Join client with RCM in EWLC and verify denial reason in assurance	Passed	
DNACJ234S_Reg_277	Join client with RCM in EWC and verify denial reason in assurance	To join client with RCM in EWC and verify denial reason in assurance	Passed	
DNACJ234S_Reg_278	Provision EWC to DNAC and join client with RCM	To Provision EWC to DNAC and join client with RCM	Passed	
DNACJ234S_Reg_279	Verify Random MAC in Client Health	To Verify Random MAC in Client Health	Passed	
DNACJ234S_Reg_280	Roaming across AP's same eWLC	To Roaming across AP's same eWLC	Passed	
DNACJ234S_Reg_281	Roaming across WLC with same mobility domain	To Roaming across WLC with same mobility domain	Passed	
DNACJ234S_Reg_282	Associating Window client without deny RCM enabled L3-Web auth SSID & Web login with guest user	To check that Window 10 client got associated without deny RCM enabled L3-Web auth SSID & Login with guest user credentials	Passed	
DNACJ234S_Reg_283	Using Hotspot Portal to Instruct Users on Disabling MAC Address Randomization	To Use Hotspot Portal to Instruct Users on Disabling MAC Address Randomization	Passed	

## Managing WLC HA SSO via DNAC - Enhancements

Logical ID	Title	Description	Status	Defect ID
DNACJ234S_Reg_345	Manage network devices in DNAC using Inventory & PNP flow	To manage network devices in DNAC using Inventory & PNP flow	Passed	
DNACJ234S_Reg_346	Pair HA device using DNAC	To perform HA pairing using DNAC	Passed	
DNACJ234S_Reg_347	Add existing HA device to DNAC	To check and add existing HA device to DNAC	Passed	
DNACJ234S_Reg_348	Unpair the HA device using DNAC	To check if unpairing occurs using DNAC	Passed	
DNACJ234S_Reg_349	Check configure WLC HA option for standalone eWLC	To check configure WLC HA option for standalone eWLC	Passed	
DNACJ234S_Reg_350	Configure WLC HA option using incorrect IP address	To configure WLC HA option using incorrect IP address	Passed	
DNACJ234S_Reg_351	Pair 9800CL HA device using DNAC	To pair 9800CL HA device using DNAC	Passed	
DNACJ234S_Reg_352	Check HA pairing for existing HA device	To check HA pairing for existing HA device	Passed	
DNACJ234S_Reg_353	Try configure WLC HA option using EWC	To try configure WLC HA option using EWC	Passed	
DNACJ234S_Reg_354	Try configure WLC HA option using EWC HA device	To try configure WLC HA option using EWC HA device	Passed	

# Network Device

Logical ID	Title	Description	Status	Defect ID
DNACJ234S_Reg_40	Verify Network Device dashboard details	To Verify Network Device dashboard details	Passed	
DNACJ234S_Reg_41	Verify if network device details is updated for each device	To verify if network device details is updated for each device	Passed	
DNACJ234S_Reg_42	Verify if AP details is updated for each AP	To verify if AP details is updated for each AP	Passed	
DNACJ234S_Reg_43	Verify if device count is updated with each addition or deletion	To Verify if device count is updated with each addition or deletion	Passed	
DNACJ234S_Reg_44	Verify if different models of network devices are successfully monitored in dashboard	To Verify if different models of network devices are successfully monitored in dashboard	Passed	
DNACJ234S_Reg_45	Verify if different models of AP are successfully monitored in dashboard	To Verify if different models of AP are successfully monitored in dashboard	Passed	
DNACJ234S_Reg_46	Check device statistics over a timeline chart	To check device statistics over a timeline chart	Passed	
DNACJ234S_Reg_47	Check device statistics over different sites	To check device statistics over different sites	Passed	
DNACJ234S_Reg_48	Check device statistics over different domains	To check device statistics over different domains	Passed	
DNACJ234S_Reg_49	Check if the dashboard can be edited and customized	To check if the dashboard can be edited and customized	Passed	

DNACJ234S_Reg_50	Monitor network devices based on device type and health	Monitor network devices based on device type and health	Passed	CSCwc66874
DNACJ234S_Reg_51	Verify the AP stats based on different criteria	To verify the AP stats based on different criteria	Passed	
DNACJ234S_Reg_52	Export the device details from network dashboard	To export the device details from network dashboard	Passed	
DNACJ234S_Reg_53	Monitor network device details in Network/Device 360 page	To monitor network device details in Network/Device 360 page	Passed	

## Network Insights 2.0 - Radio Insights based on Client Experience

Logical ID	Title	Description	Status	Defect ID
DNACJ234S_Reg_379	Add 9120 AP to DNAC and validate the details in Network insights.	To Validate the Network service Analytics for 9120 AP	Passed	
DNACJ234S_Reg_380	Validate the Issue count gradient in network insights.	To Validate the Issue count gradient in network insights.	Passed	
DNACJ234S_Reg_381	Add 9115 AP to DNAC and validate the details in Network insights.	To Validate the Network service Analytics of Insights for 9115 AP	Passed	
DNACJ234S_Reg_382	Check the Client load per week in network insights.	To Check the Client load per week in network insights.	Passed	
DNACJ234S_Reg_383	Check the network insights filters for capacity ,coverage & throughput.	To Check the network insights filters for capacity ,coverage & throughput.	Passed	
DNACJ234S_Reg_384	Add 9130 AP to DNAC and validate the details in Network insights.	To Validate the Network service Analytics for 9130 AP	Passed	
DNACJ234S_Reg_385	Add 9105 AP to DNAC and validate the details in Network insights.	To Validate the Network service Analytics for 9105 AP	Passed	
DNACJ234S_Reg_386	Validate 9120 AP in Network Heatmap with 2.4Ghz band	To Validate the Network service Analytics Heat map for 9120 AP	Passed	
DNACJ234S_Reg_387	Validate 9115 AP in Network Heatmap with 5Ghz band	To Validate the Network service Analytics Heat map for 9115 AP	Passed	
DNACJ234S_Reg_388	Validate 9130 AP in Network Heatmap with 2.4Ghz band	To Validate the Network service Analytics Heat map for 9130 AP	Passed	



DNACJ234S_Reg_389	Validate 9105 AP in Network Heatmap with 5Ghz band	To Validate the Network service Analytics Heat map for 9105 AP	Passed	
DNACJ234S_Reg_390	Compare 9120 AP & 9130 AP in peer networks	To compare the AP's in Network service Analytics	Passed	
DNACJ234S_Reg_391	Compare 9120 AP & 9115 AP in peer networks	To compare the AP's in Network service Analytics	Passed	
DNACJ234S_Reg_392	Compare 9120 AP & 9105 AP in peer networks	To compare the AP's in Network service Analytics	Passed	
DNACJ234S_Reg_393	Compare 9115 AP & 9105 AP in peer networks	To compare the AP's in Network service Analytics	Passed	
DNACJ234S_Reg_394	Compare 9115 AP & 9130 AP in peer networks	To compare the AP's in Network service Analytics	Passed	
DNACJ234S_Reg_395	Compare 9130 AP & 9105 AP in peer networks	To compare the AP's in Network service Analytics	Passed	
DNACJ234S_Reg_396	Create Two Networks with different types AP's	To compare the Networks in Network service Analytics	Passed	

## Network Setting Design Compliance

Logical ID	Title	Description	Status	Defect ID
DNACJ234S_Reg_769	Navigating to the Network setting page to verify design compliance	To check the design compliance of the network page in network setting	Passed	
DNACJ234S_Reg_770	Navigating to the Device Credential page to verify design compliance	To check the design compliance of the Device Credential page in network setting	Passed	
DNACJ234S_Reg_771	Navigating to the IP Address Pools to verify design compliance	To check the design compliance of the IP Address Pools in network setting	Passed	
DNACJ234S_Reg_772	Validating the SP Profiles page to verify design compliance	To check the design compliance of the SP Profiles in network setting	Passed	
DNACJ234S_Reg_773	Validating the Wireless page to verify design compliance	To check the design compliance of the Wireless in network setting	Passed	
DNACJ234S_Reg_774	Validating the Telemetry page to verify design compliance	To check the design compliance of the Wireless in network setting	Passed	

## Overall and Network Health Dashboard

Logical ID	Title	Description	Status	Defect ID
DNACJ234S_Reg_01	Adding network devices in DNAC	To add network devices like switches, Controllers to DNAC and check if the network devices gets added to DNAC or not	Passed	
DNACJ234S_Reg_02	Check if the added device is shown in the overall health dashboard	To check if the Network device added in DNAC is shown in the overall health dashboard	Passed	
DNACJ234S_Reg_03	Connecting a Windows clients to a WLAN and check if the client health ,Active clients detail is shown in the wireless Clients dashlet	To connect a Window clients to the wlan created and check if the clients health is shown in the wireless client summary	Passed	
DNACJ234S_Reg_04	Connecting a Android clients to a WLAN and check if the client health ,Active clients detail is shown in the wireless Clients dashlet	To connect a Android clients to the wlan created and check if the clients health is shown in the wireless client summary	Passed	
DNACJ234S_Reg_05	Connecting a IOS clients to a WLAN and check if the client health ,Active clients detail is shown in the wireless Clients dashlet	To connect a IOS clients to the wlan created and check if the clients health is shown in the wireless client summary	Passed	

DNACJ234S_Reg_06	Connecting a Mac OS clients to a WLAN and check if the client health ,Active clients detail is shown in the wireless Clients dashlet	To connect a Mac OS clients to the wlan created and check if the clients health is shown in the wireless client summary	Passed	
DNACJ234S_Reg_07	Connecting a clients to a WLAN with WPA + WPA2 Security and check if the client health ,Active clients detail is shown in the wireless Clients dashlet	To connect a clients to the wlan with WPA + WPA2 security and check if the clients health is shown in the wireless client summary	Passed	
DNACJ234S_Reg_08	Connecting a clients to a WLAN with WPA2 + WPA3 Security and check if the client health ,Active clients detail is shown in the wireless Clients dashlet	To connect a clients to the wlan with WPA + WPA2 security and check if the clients health is shown in the wireless client summary	Passed	
DNACJ234S_Reg_09	Connecting a clients to a WLAN with Static WEP Security and check if the client health ,Active clients detail is shown in the wireless Clients dashlet	To connect a clients to the wlan with Static WEP security and check if the clients health is shown in the wireless client summary	Passed	
DNACJ234S_Reg_10	Connecting a Wired client to a RLAN and check if the client health is shown in the wired Clients dashlet	To connect a clients to the rlan created and check if the clients health is shown in the wired client summary	Passed	
DNACJ234S_Reg_11	Check the issue shown in the Top 10 issue types	To check if the issue shown in the top 10 issue type dashlet	Passed	

DNACJ234S_Reg_12	Resolving the issue shown and checking the resolved list	To check if the issue shown in the top 10 issue type dashlet are resolved and the resolved issue are show in resolved list or not	Passed	
DNACJ234S_Reg_13	Check if the added network device is shown in the Network Health page	To check if the Network device added in DNAC is shown in the Network health dashboard	Passed	
DNACJ234S_Reg_14	Validating the graphs shown for the network devices	To validate the if the graphs shown in the network health pages are correct	Passed	CSCwc66018
DNACJ234S_Reg_15	Checking the total APs count in the network device page in Total AP count dashlet	To check the total APs count in the network health page which is added in eWLC and check if the AP count are shown correctly	Passed	
DNACJ234S_Reg_16	Checking the Top N APs count in the network device page in Assurance page	To check the Top N APs count in the network health page which in added in eWLC and check if the AP count are shown correctly	Passed	
DNACJ234S_Reg_17	Validating the Top N APs by High Interference in network device in Assurance page	To validate the Top N APs by high interference in the network health page which is added in eWLC and check if the AP count are shown correctly	Passed	
DNACJ234S_Reg_18	Making a eWLC down to check if the Dashboard are updated or not	To make the eWLC down and check if the dashboards in network health are updated accordingly	Passed	

DNACJ234S_Reg_19	Deleting the eWLC with AP and the dashboards	To delete the eWLC with multiples AP and check if the dashboards are updated	Passed	
------------------	--	--	--------	--

## Pan Assurance event viewer

Logical ID	Title	Description	Status	Defect ID
DNACJ234S_Reg_753	Configuring DNAC with Network devices, clients, access points.	To configure DNAC with Network devices, clients, access points.	Passed	
DNACJ234S_Reg_754	Disconnecting a 9105 AP from eWLC	To disconnect a 9105 AP from eWLC and verify the same in the Issues & Events	Passed	
DNACJ234S_Reg_755	Disconnecting a 9115 AP from eWLC	To disconnect a 9115 AP from eWLC and verify the same in the Issues & Events	Passed	
DNACJ234S_Reg_756	Disconnecting a 9120 AP from eWLC	To disconnect a 9120 AP from eWLC and verify the same in the Issues & Events	Passed	
DNACJ234S_Reg_757	Disconnecting a 9130 AP from eWLC	To disconnect a 9105 AP from eWLC and verify the same in the Issues & Events	Passed	
DNACJ234S_Reg_758	Making the 9800-80 eWLC down which is added in DNAC	To make the eWLC 9800-80 down which is added in DNAC and verify if the	Passed	
DNACJ234S_Reg_759	Making the 9800-L eWLC down which is added in DNAC	To make the eWLC 9800-80 down which is added in DNAC and verify if the	Passed	
DNACJ234S_Reg_760	Making the 9800-CL eWLC down which is added in DNAC	To make the eWLC 9800-80 down which is added in DNAC and verify if the	Passed	

DNACJ234S_Reg_761	Making the 2.4GHz of 9105 AP radio down and check if the logs showing in DNAC	To make the 2.4GHz of 9105 AP radio down of the AP which is connected to eWLC	Passed	
DNACJ234S_Reg_762	Making the 2.4GHz of 9115 AP radio down and check if the logs showing in DNAC	To make the 2.4GHz of 9115 AP radio down of the AP which is connected to eWLC	Passed	
DNACJ234S_Reg_763	Making the 2.4GHz of 9120 AP radio down and check if the logs showing in DNAC	To make the 2.4GHz of 9120 AP radio down of the AP which is connected to eWLC	Passed	
DNACJ234S_Reg_764	Making the 2.4GHz of 9130 AP radio down and check if the logs showing in DNAC	To make the 2.4GHz of 9130 AP radio down of the AP which is connected to eWLC	Passed	
DNACJ234S_Reg_765	Making the 5GHz of 9105 AP radio down and check if the logs showing in DNAC	To make the 5GHz of 9105 AP radio down of the AP which is connected to eWLC	Passed	
DNACJ234S_Reg_766	Making the 5GHz of 9115 AP radio down and check if the logs showing in DNAC	To make the 5GHz of 9115 AP radio down of the AP which is connected to eWLC	Passed	
DNACJ234S_Reg_767	Making the 5GHz of 9120 AP radio down and check if the logs showing in DNAC	To make the 5GHz of 9120 AP radio down of the AP which is connected to eWLC	Passed	
DNACJ234S_Reg_768	Making the 5GHz of 9130 AP radio down and check if the logs showing in DNAC	To make the 5GHz of 9130 AP radio down of the AP which is connected to eWLC	Passed	



# Radius Profiling

Logical ID	Title	Description	Status	Defect ID
DNACJ234S_Reg_253	Verify whether your able to configure PSN(Policy Service Node) or not for Radius Profiling	To verify whether your able to configure PSN(Policy Service Node) or not for Radius Profiling	Passed	
DNACJ234S_Reg_254	Verify whether your able to configure AAA or not for Radius Profiling	To verify whether your able to configure AAA or not for Radius Profiling	Passed	
DNACJ234S_Reg_255	Create Enterprise SSID with Radius Profiling enabled and provision the device - Verify that Radius Profiling option is enabled on the policy profile	To create Enterprise SSID with Radius Profiling enabled and provision the device - To verify that Radius Profiling option is enabled on the policy profile	Passed	
DNACJ234S_Reg_256	Disable Radius profiling in UI and Re provision Enterprise SSID - Verify that Radius profiling is disabled on the policy profile	To disable Radius profiling in UI and Re provision Enterprise SSID - To verify that Radius profiling is disabled on the policy profile	Passed	
DNACJ234S_Reg_257	Create Enterprise SSID with Radius Profiling disabled and provision the device - Verify that Radius Profiling option is disabled on the policy profile	To create Enterprise SSID with Radius Profiling disabled and provision the device - To verify that Radius Profiling option is disabled on the policy profile	Passed	
DNACJ234S_Reg_258	Enable Radius profiling in UI and Re provision the SSID - Verify that Radius profiling is enabled on the policy profile	To enable Radius profiling in UI and Re provision the SSID - To verify that Radius profiling is enabled on the policy profile	Passed	

DNACJ234S_Reg_259	Create Personal SSID with Radius Profiling enabled and provision the device - Verify that Radius Profiling option is enabled on the policy profile	To create Personal SSID with Radius Profiling enabled and provision the device - To verify that Radius Profiling option is enabled on the policy profile	Passed	
DNACJ234S_Reg_260	Disable Radius profiling in UI and Re provision Personal SSID - Verify that Radius profiling is disabled on the policy profile	To disable Radius profiling in UI and Re provision Personal SSID - To verify that Radius profiling is disabled on the policy profile	Passed	
DNACJ234S_Reg_261	Create Personal SSID with Radius Profiling disabled and provision the device - Verify that Radius Profiling option is disabled on the policy profile	To create Personal SSID with Radius Profiling disabled and provision the device - To verify that Radius Profiling option is disabled on the policy profile	Passed	
DNACJ234S_Reg_262	Enable Radius profiling in UI and Re provision the SSID - Verify that Radius profiling is enabled on the policy profile	To enable Radius profiling in UI and Re provision the SSID - To verify that Radius profiling is enabled on the policy profile	Passed	
DNACJ234S_Reg_263	Create Guest SSID with Radius Profiling enabled and provision the device - Verify that Radius Profiling option is enabled on the policy profile	To create Guest SSID with Radius Profiling enabled and provision the device - To verify that Radius Profiling option is enabled on the policy profile	Passed	
DNACJ234S_Reg_264	Disable Radius profiling in UI and Re provision Enterprise SSID - Verify that Radius profiling is disabled on the policy profile	To disable Radius profiling in UI and Re provision Enterprise SSID - To verify that Radius profiling is disabled on the policy profile	Passed	

DNACJ234S_Reg_265	Create Guest SSID with Radius Profiling disabled and provision the device - Verify that Radius Profiling option is disabled on the policy profile	To create Guest SSID with Radius Profiling disabled and provision the device - To verify that Radius Profiling option is disabled on the policy profile	Passed	
DNACJ234S_Reg_266	Enable Radius profiling in UI and Re provision the SSID - Verify that Radius profiling is enabled on the policy profile	To enable Radius profiling in UI and Re provision the SSID - To verify that Radius profiling is enabled on the policy profile	Passed	
DNACJ234S_Reg_267	Remove AAA(PSN) server from the wlan and re provision the SSID - Verify that Radius Profiling option is disabled on the policy profile	To remove AAA(PSN) server from the wlan and re provision the SSID - To verify that Radius Profiling option is disabled on the policy profile	Passed	
DNACJ234S_Reg_268	Connect Windows client and verify additional information	To connect Windows client and verify additional information	Passed	
DNACJ234S_Reg_269	Connect Android client and verify additional information	To connect Android client and verify additional information	Passed	
DNACJ234S_Reg_270	Connect MAC client and verify additional information	To connect MAC client and verify additional information	Passed	
DNACJ234S_Reg_271	Connect IOS client and verify additional information	To connect IOS client and verify additional information	Passed	
DNACJ234S_Reg_272	Connect Surface client and verify additional information	To connect Surface client and verify additional information	Passed	
DNACJ234S_Reg_273	Verify Roaming between controllers after enabling Radius Profiling	To verify Roaming between controllers after enabling Radius Profiling	Passed	

## Rolling AP Upgrade

Logical ID	Title	Description	Status	Defect ID
DNACJ234S_Reg_535	Providing the same controller name and ip address for primary controller and N+1 controller	To check whether the same controller name is accepted or not for primary controller and N+1 controller	Passed	
DNACJ234S_Reg_536	Upgrading the software image in a controller	To check whether the software image is upgraded in controller	Passed	
DNACJ234S_Reg_537	Scheduling the time to upgrade the software image into a controller.	To check whether the software image is upgraded into a controller in scheduling time	Passed	
DNACJ234S_Reg_538	Scheduling the time "Now" to upgrade the software image into a controller.	To check whether the software image is upgraded into a controller in scheduling time "Now"	Passed	
DNACJ234S_Reg_539	Resync trigger to Controller from DNAC after upgrade the software image in controller.	To check whether Controller is reloaded when triggering from DNAC after upgrade the software image in controller.	Passed	
DNACJ234S_Reg_540	Upgrade the wrong software image into the Controller from DNAC	To verify whether the error message will display when trying to upgrade wrong software image into the Controller from DNAC	Passed	
DNACJ234S_Reg_541	AP joining status to Controller after upgrade the software image	To check whether the joined Aps upgraded with controller image	Passed	

DNACJ234S_Reg_542	Verify the client connectivity status to Controller after upgrade the software image	To check whether the Client associate with controller	Passed	
DNACJ234S_Reg_543	Upgrading the software image into existing group of AP	To check whether the software image is upgraded into existing group of AP	Passed	
DNACJ234S_Reg_544	Import the image to image repository using HTTP	To check whether the WLC is upgraded using TFTP from PI	Passed	
DNACJ234S_Reg_545	Import the image to image repository using FTP	To check whether the WLC is upgraded using FTP from PI	Passed	

## RRM - Support Coverage Hole Detection EDRRM configurations

Logical ID	Title	Description	Status	Defect ID
DNACJ234S_Reg_622	Disable/Enable coverage hole detection	To verify coverage hole detection enable /disable or not	Passed	
DNACJ234S_Reg_623	Configure Data/Voice RSSI threshold for coverage	To verify Data/Voice RSSI threshold for coverage	Passed	
DNACJ234S_Reg_624	Configure Data/Voice clients pre-alarm threshold count	To verify Data/Voice clients pre-alarm threshold count	Passed	
DNACJ234S_Reg_625	Configure Data/Voice clients pre-alarm threshold percentage	To verify Data/Voice clients pre-alarm threshold percentage	Passed	
DNACJ234S_Reg_626	Configure Data/Voice clients coverage count	To verify Data/Voice clients coverage count	Passed	
DNACJ234S_Reg_627	Configure Data/Voice clients coverage percentage	To verify Data/Voice clients coverage percentage	Passed	
DNACJ234S_Reg_628	Enable / Disable ED-RRM from CLI for both bands	To verify ED-RRM is able to enable or not	Passed	
DNACJ234S_Reg_629	Modify the ED-RRM thresholds	To verify ED-RRM thresholds	Passed	
DNACJ234S_Reg_630	Assign static channels to AP, which will be ignored by RRM.	To verify ED-RRM thresholds static channels to AP	Passed	
DNACJ234S_Reg_631	Clean air AP association	To verify Clean air AP association	Passed	
DNACJ234S_Reg_632	Change of the channel by bypassing the thresholds	To verify channel by bypassing the thresholds	Passed	

## RRM - Support for General Parameters

Logical ID	Title	Description	Status	Defect ID
DNACJ234S_Reg_633	Configuring Access Points, Channel width radio parameters for 5Ghz band.	To configure Access Points, Channel width radio parameters for 5Ghz band.	Passed	
DNACJ234S_Reg_634	Configuring Access Points, Channel width radio parameters for 2.4Ghz band.	To configure Access Points, Channel width radio parameters for 2.4Ghz band.	Passed	
DNACJ234S_Reg_635	Configure channel parameters for 5ghz band and monitor in DNAC	To configure channel parameters for 5ghz band and monitor in DNAC	Passed	
DNACJ234S_Reg_636	Configure channel parameters for 5ghz band slot 2 and monitor in DNAC	To configure channel parameters for 5ghz band slot 2 and monitor in DNAC	Passed	
DNACJ234S_Reg_637	Configure channel parameters for 24ghz band and monitor in DNAC	To configure channel parameters for 24ghz band and monitor in DNAC	Passed	
DNACJ234S_Reg_638	Configure channel parameters for dual band and monitor in DNAC	To configure channel parameters for dual band and monitor in DNAC	Passed	
DNACJ234S_Reg_639	Channel updation and monitor assurance in DNAC	To perform channel updation and monitor assurance in DNAC	Passed	
DNACJ234S_Reg_640	Configure tx power for 5ghz band and monitor in DNAC	To configure tx power for 5ghz band and monitor in DNAC	Passed	
DNACJ234S_Reg_641	Configure tx power for 24ghz band and monitor in DNAC	To configure tx power for 24ghz band and monitor in DNAC	Passed	

DNACJ234S_Reg_642	Configure tx power for dual band and monitor in DNAC	To configure tx power for dual band and monitor in DNAC	Passed	
DNACJ234S_Reg_643	Configure tx power for 5ghz rrm band and monitor in DNAC	To configure tx power for 5ghz rrm band and monitor in DNAC	Passed	
DNACJ234S_Reg_644	Configure tx power for 24ghz rrm band and monitor in DNAC	To configure tx power for 24ghz rrm band and monitor in DNAC	Passed	
DNACJ234S_Reg_645	Validate assurance via RRM using Android client	To validate assurance via RRM using Android client	Passed	
DNACJ234S_Reg_646	Validate assurance via RRM using Surface client	To validate assurance via RRM using Surface client	Passed	
DNACJ234S_Reg_647	Validate assurance via RRM using mac client	To validate assurance via RRM using mac client	Passed	
DNACJ234S_Reg_648	Validate assurance via RRM using different models of AP	To validate assurance via RRM using different models of AP	Passed	
DNACJ234S_Reg_649	Validate assurance via RRM using EWC-AP	To validate assurance via RRM using EWC-AP	Passed	
DNACJ234S_Reg_650	Validate assurance via RRM using HA pair	To validate assurance via RRM using HA pair	Passed	



## RRM assurance for granular reasons for power and channel change

Logical ID	Title	Description	Status	Defect ID
DNACJ234S_Reg_190	Configuring Access Points, Channel width radio parameters for 5Ghz band.	To configure Access Points, Channel width radio parameters for 5Ghz band.	Passed	
DNACJ234S_Reg_191	Configuring Access Points, Channel width radio parameters for 2.4Ghz band.	To configure Access Points, Channel width radio parameters for 2.4Ghz band.	Passed	
DNACJ234S_Reg_192	Configure channel parameters for 5ghz band and monitor in DNAC	To configure channel parameters for 5ghz band and monitor in DNAC	Passed	
DNACJ234S_Reg_193	Configure channel parameters for 5ghz band slot 2 and monitor in DNAC	To configure channel parameters for 5ghz band slot 2 and monitor in DNAC	Passed	
DNACJ234S_Reg_194	Configure channel parameters for 24ghz band and monitor in DNAC	To configure channel parameters for 24ghz band and monitor in DNAC	Passed	
DNACJ234S_Reg_195	Configure channel parameters for dual band and monitor in DNAC	To configure channel parameters for dual band and monitor in DNAC	Passed	
DNACJ234S_Reg_196	Channel updation and monitor assurance in DNAC	To perform channel updation and monitor assurance in DNAC	Passed	
DNACJ234S_Reg_197	Configure tx power for 5ghz band and monitor in DNAC	To configure tx power for 5ghz band and monitor in DNAC	Passed	
DNACJ234S_Reg_198	Configure tx power for 24ghz band and monitor in DNAC	To configure tx power for 24ghz band and monitor in DNAC	Passed	CSCwc89437

DNACJ234S_Reg_199	Configure tx power for dual band and monitor in DNAC	To configure tx power for dual band and monitor in DNAC	Passed	
DNACJ234S_Reg_200	Configure tx power for 5ghz rrm band and monitor in DNAC	To configure tx power for 5ghz rrm band and monitor in DNAC	Passed	
DNACJ234S_Reg_201	Configure tx power for 24ghz rrm band and monitor in DNAC	To configure tx power for 24ghz rrm band and monitor in DNAC	Passed	
DNACJ234S_Reg_202	Validate assurance via RRM using Android client	To validate assurance via RRM using Android client	Passed	
DNACJ234S_Reg_203	Validate assurance via RRM using Surface client	To validate assurance via RRM using Surface client	Passed	
DNACJ234S_Reg_204	Validate assurance via RRM using mac client	To validate assurance via RRM using mac client	Passed	
DNACJ234S_Reg_205	Validate assurance via RRM using different models of AP	To validate assurance via RRM using different models of AP	Passed	
DNACJ234S_Reg_206	Validate assurance via RRM using EWC-AP	To validate assurance via RRM using EWC-AP	Passed	
DNACJ234S_Reg_207	Validate assurance via RRM using HA pair	To validate assurance via RRM using HA pair	Passed	

## Show Rogue client location in the threat 360

Logical ID	Title	Description	Status	Defect ID
DNACJ234S_Reg_594	Verify maps is loading properly	To verify maps is loading properly in 360 degree view of Rogue dashboard screen	Passed	
DNACJ234S_Reg_595	Verify the deducting AP are getting plotted	To verify the deducting AP are getting plotted in 360 degree view of Rogue dashboard screen	Passed	
DNACJ234S_Reg_596	Verify the rogue AP are getting plotted	To verify the rogue AP are getting plotted in 360 degree view of Rogue dashboard screen	Passed	
DNACJ234S_Reg_597	Verify the client are getting plotted	To verify the client are getting plotted in 360 degree view of Rogue dashboard screen	Passed	
DNACJ234S_Reg_598	Verify color format as per Threat Level	To verify color format as per Threat Level	Passed	
DNACJ234S_Reg_599	Verify the full screen option of Maps	To verify the full screen option of Maps in 360 degree view	Passed	
DNACJ234S_Reg_600	Verify Start Containment is disabled or not	To verify Start Containment is disabled or not	Passed	
DNACJ234S_Reg_601	Verify Detections and Clients are showing as per the data	To verify Detections and Clients are showing as per the data	Passed	
DNACJ234S_Reg_602	Export Clients data	To export Clients data	Passed	

## Show Rogue client location in the threat 360

DNACJ234S_Reg_603	Perform Beacon Wrong Channel Rogue detection for Windows machine and verify Client Location	To perform Beacon Wrong Channel Rogue detection for Windows machine and to verify Client Location	Passed	
DNACJ234S_Reg_604	Perform Beacon Wrong Channel Rogue detection for Android client and verify Client Location	To perform Beacon Wrong Channel Rogue detection for Android client and to verify Client Location	Passed	
DNACJ234S_Reg_605	Perform Beacon Wrong Channel Rogue detection for MAC client and verify Client Location	To perform Beacon Wrong Channel Rogue detection for MAC client and to verify Client Location	Passed	
DNACJ234S_Reg_606	Perform Beacon Wrong Channel Rogue detection for IOS client and verify Client Location	To perform Beacon Wrong Channel Rogue detection for IOS client and to verify Client Location	Passed	
DNACJ234S_Reg_607	Perform Beacon Wrong Channel Rogue detection for Go Plus client and verify Client Location	To perform Beacon Wrong Channel Rogue detection for Go Plus client and to verify Client Location	Passed	
DNACJ234S_Reg_608	Verify Last Reported Threat 360 MAC	To verify Last Reported Threat 360 MAC	Passed	

## Site 360/Dashboard Landing Page

Logical ID	Title	Description	Status	Defect ID
DNACJ234S_Reg_332	Adding network devices in DNAC	To add network devices like switches, Controllers to DNAC and check if the network devices gets added to DNAC or not	Passed	
DNACJ234S_Reg_333	View the number of devices in given site	To view the total number of devices added in the given site	Passed	
DNACJ234S_Reg_334	Check the details of Network Devices in the specific site	To check the details of Network Devices in the specific site	Passed	
DNACJ234S_Reg_335	the Detailed view of network Device- Device 360	To view the Detailed view of network Device- Device 360	Passed	
DNACJ234S_Reg_336	the map and comparison view of network Device- Device 360	To view the map and comparison view of network Device- Device 360	Passed	
DNACJ234S_Reg_337	the map and comparison- Table view of network Device - Device 360	To view the map and comparison- Table view of network Device- Device 360	Passed	
DNACJ234S_Reg_338	the map and comparison - Map view of network Device- Device 360	To view the map and comparison- Map view of network Device- Device 360	Passed	
DNACJ234S_Reg_339	Detailed Information of Network Device- Device 360	To view the detailed Information of Network Device- Device 360	Passed	
DNACJ234S_Reg_340	Detailed Information of Radio Frequency- Device 360	To view the detailed Information of Radio Frequency- Device 360	Passed	

DNACJ234S_Reg_341	Detailed Information of Ethernet- Device 360	To view the detailed Information of Ethernet Device- Device 360	Passed	
DNACJ234S_Reg_342	Network Heatmap page through Site 360	To view the Network heatmap page through Site 360	Passed	
DNACJ234S_Reg_343	Detail Information of Interfaces-Device 360	To view the detailed Information of Interfaces-Device 360	Passed	
DNACJ234S_Reg_344	Detail Information of Controller Device -Device 360	To view the detailed Information of Controller Device -Device 360	Passed	

# Smart Licencing

Logical ID	Title	Description	Status	Defect ID
DNACJ234S_Reg_157	Configuring Smart account in DNAC via UI	To Configuring Smart account in DNAC via UI and check if the Profile is created or not	Passed	
DNACJ234S_Reg_158	Configuring Smart account in DNAC via UI with wrong credentials.	To Configuring Smart account in DNAC via UI with wrong credentials and verify it giving proper error messages .	Passed	
DNACJ234S_Reg_159	Verify able to fetch the satellite name	To Verify able to fetch the satellite name correctly with out any issues.	Passed	
DNACJ234S_Reg_160	Verify able to show proper error message for smart account adding.	To Verify able to show proper error message for smart account adding.	Passed	
DNACJ234S_Reg_161	Verify SSM Connection Mode :Direct	To Verify SSM Connection Mode :Direct	Passed	
DNACJ234S_Reg_162	Verify SSM Connection Mode: On-Prem CSSM :	To Verify SSM Connection Mode: On-Prem CSSM :	Passed	
DNACJ234S_Reg_163	Verify SSM Connection Mode: proxy	To Verify SSM Connection Mode: proxy:	Passed	
DNACJ234S_Reg_164	Verify SSM Connection Mode :Direct with 9800-40 model controller.	To Verify SSM Connection Mode :Direct with 9800-40 model controller.	Passed	
DNACJ234S_Reg_165	Verify SSM Connection Mode :Direct with 9800-80 model controller.	To Verify SSM Connection Mode :Direct with 9800-80 model controller.	Passed	
DNACJ234S_Reg_166	Verify SSM Connection Mode :Direct with 9800-L model controller.	To Verify SSM Connection Mode :Direct with 9800-L model controller.	Passed	

DNACJ234S_Reg_167	Verify SSM Connection Mode :On-Prime CSSM with 9800-40 model controller.	To Verify SSM Connection Mode :Direct with 9800-40 model controller.	Passed	
DNACJ234S_Reg_168	Verify SSM Connection Mode :On-Prime CSSM with 9800-80 model controller.	To Verify SSM Connection Mode :Direct with 9800-80 model controller.	Passed	
DNACJ234S_Reg_169	Verify SSM Connection Mode :On-Prime CSSM with 9800-L model controller.	To Verify SSM Connection Mode :Direct with 9800-L model controller.	Passed	



## Support AP refresh across different WLCs

Logical ID	Title	Description	Status	Defect ID
DNACJ234S_Reg_721	Provision network devices in DNAC using Inventory & PNP flow	To provision network devices in DNAC using Inventory & PNP flow	Passed	
DNACJ234S_Reg_722	Perform AP Refresh flow in DNAC and verify the details	To perform AP Refresh flow in DNAC and verify the details	Passed	
DNACJ234S_Reg_723	Check the report after Ap Refresh process is done	To verify AP details in report after ap replacement	Passed	
DNACJ234S_Reg_724	AP Refresh process using different model AP(9115 to 9130)	To verify AP Refresh with different AP model	Passed	
DNACJ234S_Reg_725	Verify AP refresh works fine for all model APs	Verify AP refresh works fine for all model APs	Passed	
DNACJ234S_Reg_726	Choosing new AP from same controller for AP refresh	To choose new AP from same controller for AP refresh	Passed	
DNACJ234S_Reg_727	Choosing new AP from different controller for AP refresh	To choose new AP from different controller for AP refresh	Passed	
DNACJ234S_Reg_728	Perform AP refresh process for bulk amount of AP's	To perform AP refresh process for bulk amount of AP's	Passed	
DNACJ234S_Reg_729	Perform AP refresh across different WLC models	To perform AP refresh across different WLC models	Passed	
DNACJ234S_Reg_730	Perform AP refresh using newer AP models like 9105	To perform AP refresh using newer AP models like 9105	Passed	

## Support configuration of advanced WLAN parameters

Logical ID	Title	Description	Status	Defect ID
DNACJ234S_Reg_473	Test Max clients per wlan with wrong values	To test Max clients per wlan with wrong values	Passed	
DNACJ234S_Reg_474	Test attributes at there corner case values. Value one greater than the max value	To test attributes at there corner case values. Value one greater than the max value	Passed	
DNACJ234S_Reg_475	Test attributes at there corner case values. Value one lesser than the min value	To test attributes at there corner case values. Value one lesser than the min value	Passed	
DNACJ234S_Reg_476	Test attributes at there corner case values. Value exactly equal to max value allowed	To test attributes at there corner case values. Value exactly equal to max value allowed	Passed	
DNACJ234S_Reg_477	Test attributes at there corner case values. Value exactly equal to min value allowed	To test attributes at there corner case values. Value exactly equal to min value allowed	Passed	
DNACJ234S_Reg_478	Test if Load bupponce and Assisted roaming prediction can be enabled simultaneously.	To test if Load bupponce and Assisted roaming prediction can be enabled simultaneously.	Passed	
DNACJ234S_Reg_479	Test Max client Per WLAN should be in range of [0-10000] for eWLC device. Hence give, out of range value and see if it shows valid at ion failure at provision time	To test Max client Per WLAN should be in range of [0-10000] for eWLC device. Hence give, out of range value and see if it shows valid at ion failure at provision time	Passed	

DNACJ234S_Reg_480	Test provisioning with new design that has all values unset Operation=Up date existing wlan	To test provisioning with new design that has all values unset Operation=Up date existing wlan	Passed	
DNACJ234S_Reg_481	Test provisioning with default design that has all some values unset, and see what values are passed for such attributes. Operation=Up date existing wlan	To test provisioning with default design that has all some values unset, and see what values are passed for such attributes. Operation=Up date existing wlan	Passed	
DNACJ234S_Reg_482	Test provisioning with new design that has all values unset Operation=Create New wlan	To test provisioning with new design that has all values unset Operation=Create New wlan	Passed	
DNACJ234S_Reg_483	Validate if Model config discovery is able to fetch all values correctly	To validate if Model config discovery is able to fetch all values correctly	Passed	
DNACJ234S_Reg_484	Check if exporting a Model Config design instance has all values correctly	To check if exporting a Model Config design instance has all values correctly	Passed	
DNACJ234S_Reg_485	Check if importing a Model Config design Json file, results in correct rendering of UI with correct values	To check if importing a Model Config design Json file, results in correct rendering of UI with correct values	Passed	
DNACJ234S_Reg_486	Connect Windows Client and verify Advanced wlan parameters	Connect Windows Client and verify Advanced wlan parameters	Passed	
DNACJ234S_Reg_487	Connect Android Client and verify Advanced wlan parameters	Connect Android Client and verify Advanced wlan parameters	Passed	
DNACJ234S_Reg_488	Connect MAC Client and verify Advanced wlan parameters	Connect MAC Client and verify Advanced wlan parameters	Passed	

DNACJ234S_Reg_489	Connect IOS Client and verify Advanced wlan parameters	Connect IOS Client and verify Advanced wlan parameters	Passed	
DNACJ234S_Reg_490	Connect Go Plus Client and verify Advanced wlan parameters	Connect Go Plus Client and verify Advanced wlan parameters	Passed	

## Support Dual band XOR radio config

Logical ID	Title	Description	Status	Defect ID
DNACJ234S_Reg_449	Verify that AP's list shown in the AP configuration Workflow with site hierarchy	To verify that AP's list shown in the AP configuration Workflow with site hierarchy	Failed	CSCwc99983
DNACJ234S_Reg_450	Verify that The config AP workflow should allow the selection of AP(s) which are not assigned to any site	To verify that The config AP workflow should allow the selection of AP(s) which are not assigned to any site	Passed	
DNACJ234S_Reg_451	Verify that when user select the radio role is "serving", and band selected is 5 Ghz, custom power assignment is not allowed. Only global power assignment is allowed.	To verify that when user select the radio role is "serving", and band selected is 5 Ghz, custom power assignment is not allowed. Only global power assignment is allowed.	Passed	
DNACJ234S_Reg_452	Disable Select Radio, Power Assignment, Channel Assignment, Channel Width, Admin State	To disable Select Radio, Power Assignment, Channel Assignment, Channel Width, Admin State	Passed	
DNACJ234S_Reg_453	Configure 2.4GHZ Dual Band (XOR) Radio role assignment Serving	To configure 2.4GHZ Dual Band (XOR) Radio role assignment Serving	Passed	
DNACJ234S_Reg_454	Configure 5GHZ Dual Band (XOR) Radio role assignment Serving	To configure 5GHZ Dual Band (XOR) Radio role assignment Serving	Passed	
DNACJ234S_Reg_455	Verify that User can skip XOR selection page and complete the workflow	To verify that User can skip XOR selection page and complete the workflow	Passed	

DNACJ234S_Reg_456	Verify XOR configuration is supported only when the AP mode is Local/Flex Custom/Remote/Bridge	To verify XOR configuration is supported only when the AP mode is Local/Flex Custom/Remote/Bridge	Passed	
DNACJ234S_Reg_457	Verify The XOR configuration is not supported when the AP mode is sniffer	To verify The XOR configuration is not supported when the AP mode is sniffer	Passed	
DNACJ234S_Reg_458	Verify error message for un-supported AP modes which are different modes	To verify error message for un-supported AP modes which are different modes	Passed	
DNACJ234S_Reg_459	Verify error message for un-supported AP modes with global config which are different modes	Verify error message for un-supported AP modes with global config which are different modes	Passed	
DNACJ234S_Reg_460	Configure the Custom Power, Channel, Channel width Serving with 5GHz radio and Check the AP are updated with configured parameter	To configure the Custom Power, Channel, Channel width Serving with 5GHz radio and to check the AP are updated with configured parameter	Passed	
DNACJ234S_Reg_461	Configure the Global Power, Custom Channel, Channel width Serving with 5GHz radio and Check the AP are updated with configured parameter	To configure the Global Power, Custom Channel, Channel width Serving with 5GHz radio and to check the AP are updated with configured parameter	Passed	
DNACJ234S_Reg_462	Configure the Custom Power, Channel, Channel width Serving with 2.4GHz radio and Check the AP are updated with configured parameter	To configure the Custom Power, Channel, Channel width Serving with 2.4GHz radio and to check the AP are updated with configured parameter	Passed	

DNACJ234S_Reg_463	Verify when the XOR Radio Admin state is disabled it should allow to configure the Channel, power, width	To verify when the XOR Radio Admin state is disabled it should allow to configure the Channel, power, width	Passed	
DNACJ234S_Reg_464	Verify the Antenna gain for Dual band XOR	To verify the Antenna gain for Dual band XOR	Failed	CSCwc65138
DNACJ234S_Reg_465	Verify the Antenna cable loss for Dual band XOR	To verify the Antenna cable loss for Dual band XOR	Passed	
DNACJ234S_Reg_466	Verify that user can enable the Clean air/SI for Radio XOR only when the AP mode Local/Flex Connect/Monitor	To verify that user can enable the Clean air/SI for Radio XOR only when the AP mode Local/Flex Connect/Monitor	Passed	
DNACJ234S_Reg_467	Verify that when user select the un-supported AP's for configure XOR it should give info message	To verify that when user select the un-supported AP's for configure XOR it should give info message	Passed	
DNACJ234S_Reg_468	Verify when both radio is disabled on AP and try to configure the XOR parament and check	To verify when both radio is disabled on AP and try to configure the XOR parament and check	Passed	
DNACJ234S_Reg_469	Verify the CLI preview for the XOR config parameters	To verify the CLI preview for the XOR config parameters	Passed	
DNACJ234S_Reg_470	Verify the AP configuration XOR configuration for EWC device	To verify the AP configuration XOR configuration for EWC device	Passed	
DNACJ234S_Reg_471	Verify that AP configuration for XOR configuration is success after AP discovered through the AP-PnP	To verify that AP configuration for XOR configuration is success after AP discovered through the AP-PnP	Passed	

DNACJ234S_Reg_472	Verify that Assurance AP 360 page updates proper XOR Radio details for the AP's which are configured through AP workflow with XOR parameters	To verify that Assurance AP 360 page updates proper XOR Radio details for the AP's which are configured through AP workflow with XOR parameters	Passed	
-------------------	--	---	--------	--



## Support for AP LED blink flash from DNAC

Logical ID	Title	Description	Status	Defect ID
DNACJ234S_Reg_651	Configuring DNAC with Network devices, clients, access points.	To configure DNAC with Network devices, clients, access points.	Passed	
DNACJ234S_Reg_652	Enabling LED Flash to Managed AP	To enable LED Flash to Managed AP from DNAC and verify if the AP LED is flashing or not	Passed	
DNACJ234S_Reg_653	Enabling LED Flash config to 9105 AP connected to 9800-80 eWLC	To enable LED Flash to Managed AP from DNAC and verify if the AP LED is flashing or not	Passed	
DNACJ234S_Reg_654	Enabling LED Flash config to 9115 AP connected to 9800-80 eWLC	To enable LED Flash to Managed AP from DNAC and verify if the AP LED is flashing or not	Passed	
DNACJ234S_Reg_655	Enabling LED Flash config to 9120 AP connected to 9800-80 eWLC	To enable LED Flash to Managed AP from DNAC and verify if the AP LED is flashing or not	Passed	
DNACJ234S_Reg_656	Enabling LED Flash config to 9130 AP connected to 9800-80 eWLC	To enable LED Flash to Managed AP from DNAC and verify if the AP LED is flashing or not	Passed	
DNACJ234S_Reg_657	Enabling LED Flash config to 9105 AP connected to 9800-L eWLC	To enable LED Flash to Managed AP from DNAC and verify if the AP LED is flashing or not	Passed	

DNACJ234S_Reg_658	Enabling LED Flash config to 9115 AP connected to 9800-LEWLC	To enable LED Flash to Managed AP from DNAC and verify if the AP LED is flashing or not	Passed	
DNACJ234S_Reg_659	Enabling LED Flash config to 9120 AP connected to 9800-LEWLC	To enable LED Flash to Managed AP from DNAC and verify if the AP LED is flashing or not	Passed	
DNACJ234S_Reg_660	Enabling LED Flash config to 9130 AP connected to 9800-LEWLC	To enable LED Flash to Managed AP from DNAC and verify if the AP LED is flashing or not	Passed	
DNACJ234S_Reg_661	Enabling LED Flash config to 9105 AP connected to 9800-CL eWLC	To enable LED Flash to Managed AP from DNAC and verify if the AP LED is flashing or not	Passed	
DNACJ234S_Reg_662	Enabling LED Flash config to 9115 AP connected to 9800-CL eWLC	To enable LED Flash to Managed AP from DNAC and verify if the AP LED is flashing or not	Passed	
DNACJ234S_Reg_663	Enabling LED Flash config to 9120 AP connected to 9800-CL eWLC	To enable LED Flash to Managed AP from DNAC and verify if the AP LED is flashing or not	Passed	
DNACJ234S_Reg_664	Enabling LED Flash config to 9130 AP connected to 9800-CL eWLC	To enable LED Flash to Managed AP from DNAC and verify if the AP LED is flashing or not	Passed	

DNACJ234S_Reg_665	Configuring Custom time for AP LED flash for the 9105 AP in 9800-80 eWLC and check the behaviour	To configure custom time for AP LED flash for 9105 AP which is connected in eWLC 9800-80 and check if the flash works only for the custom time	Passed	
DNACJ234S_Reg_666	Configuring Custom time for AP LED flash for the 9115 AP in 9800-80 eWLC and check the behaviour	To configure custom time for AP LED flash for 9115 AP which is connected in eWLC 9800-80 and check if the flash works only for the custom time	Passed	
DNACJ234S_Reg_667	Configuring Custom time for AP LED flash for the 9120 AP in 9800-80 eWLC and check the behaviour	To configure custom time for AP LED flash for 9120 AP which is connected in eWLC 9800-80 and check if the flash works only for the custom time	Passed	
DNACJ234S_Reg_668	Configuring Custom time for AP LED flash for the 9130 AP in 9800-80 eWLC and check the behaviour	To configure custom time for AP LED flash for 9130 AP which is connected in eWLC 9800-80 and check if the flash works only for the custom time	Passed	
DNACJ234S_Reg_669	Configuring Custom time for AP LED flash for the 9105 AP in 9800-CL eWLC and check the behaviour	To configure custom time for AP LED flash for 9105 AP which is connected in eWLC 9800-CL and check if the flash works only for the custom time	Passed	
DNACJ234S_Reg_670	Configuring Custom time for AP LED flash for the 9115 AP in 9800-CL eWLC and check the behaviour	To configure custom time for AP LED flash for 9115 AP which is connected in eWLC 9800-CL and check if the flash works only for the custom time	Passed	

DNACJ234S_Reg_671	Configuring Custom time for AP LED flash for the 9120 AP in 9800-CL eWLC and check the behaviour	To configure custom time for AP LED flash for 9120 AP which is connected in eWLC 9800-CL and check if the flash works only for the custom time	Passed	
DNACJ234S_Reg_672	Configuring Custom time for AP LED flash for the 9130 AP in 9800-CL eWLC and check the behaviour	To configure custom time for AP LED flash for 9130 AP which is connected in eWLC 9800-CL and check if the flash works only for the custom time	Passed	
DNACJ234S_Reg_673	Configuring Custom time for AP LED flash for the 9105 AP in 9800-L eWLC and check the behaviour	To configure custom time for AP LED flash for 9105 AP which is connected in eWLC 9800-L and check if the flash works only for the custom time	Passed	
DNACJ234S_Reg_674	Configuring Custom time for AP LED flash for the 9115 AP in 9800-L eWLC and check the behaviour	To configure custom time for AP LED flash for 9115 AP which is connected in eWLC 9800-L and check if the flash works only for the custom time	Passed	
DNACJ234S_Reg_675	Configuring Custom time for AP LED flash for the 9120 AP in 9800-L eWLC and check the behaviour	To configure custom time for AP LED flash for 9120 AP which is connected in eWLC 9800-L and check if the flash works only for the custom time	Passed	
DNACJ234S_Reg_676	Configuring Custom time for AP LED flash for the 9130 AP in 9800-L eWLC and check the behaviour	To configure custom time for AP LED flash for 9130 AP which is connected in eWLC 9800-L and check if the flash works only for the custom time	Passed	

DNACJ234S_Reg_677	Trying to enable LED flash for AP which is not reachable	To enable AP flash for the un reachable AP and check the behaviour .	Passed	
-------------------	--	--	--------	--

## Support for Custom Policy Tag for C9800

Logical ID	Title	Description	Status	Defect ID
DNACJ234S_Reg_693	Configuring DNAC with Network devices, clients, access points.	To configure DNAC with Network devices, clients, access points.	Passed	
DNACJ234S_Reg_694	Configure custom policy tag and provisioning the same to the eWLC	To check if the custom policy tag is configured in DNAC and successfully provisioned or not	Passed	
DNACJ234S_Reg_695	Configure custom policy tag and provisioning the same to the 9800-80 eWLC	To check if the custom policy tag is configured in DNAC and successfully provisioned or not	Passed	
DNACJ234S_Reg_696	Configure custom policy tag and provisioning the same to the 9800-CL eWLC	To check if the custom policy tag is configured in DNAC and successfully provisioned or not	Passed	
DNACJ234S_Reg_697	Configure custom policy tag and provisioning the same to the 9800-L eWLC	To check if the custom policy tag is configured in DNAC and successfully provisioned or not	Passed	
DNACJ234S_Reg_698	Deleting the custom policy tag created .	To check if the custom policy tag is deleted or not	Passed	
DNACJ234S_Reg_699	Connecting a window client to a SSID mapped with a custom policy tag created from DNAC	To connect a window client to a SSID mapped with a custom policy tag created from DNAC	Passed	
DNACJ234S_Reg_700	Connecting a Windows Surface client to a SSID mapped with a custom policy tag created from DNAC	To connect a Window Surface client to a SSID mapped with a custom policy tag created from DNAC	Passed	

DNACJ234S_Reg_701	Connecting a Android client to a SSID mapped with a custom policy tag created from DNAC	To connect a Android client to a SSID mapped with a custom policy tag created from DNAC	Passed	
DNACJ234S_Reg_702	Connecting a iPhone client to a SSID mapped with a custom policy tag created from DNAC	To connect a iPhone client to a SSID mapped with a custom policy tag created from DNAC	Passed	
DNACJ234S_Reg_703	To connect a MAC os client to a SSID mapped with a custom policy tag created from DNAC	To connect a MAC os client to a SSID mapped with a custom policy tag created from DNAC	Passed	
DNACJ234S_Reg_704	Configuring a SSID with WPA 3 SAE security and connecting a window client to a SSID mapped with a custom policy tag created from DNAC	To configuring a SSID with WPA 3 SAE security and connecting a window client to a SSID mapped with a custom policy tag created from DNAC	Passed	
DNACJ234S_Reg_705	Configuring a SSID with WPA 3 802.1x security and connecting a window client to a SSID mapped with a custom policy tag created from DNAC	To configuring a SSID with WPA 3 802.1x security and connecting a window client to a SSID mapped with a custom policy tag created from DNAC	Passed	
DNACJ234S_Reg_706	Configuring a SSID with WPA 3 OWE security and connecting a window client to a SSID mapped with a custom policy tag created from DNAC	To configuring a SSID with WPA 3 OWE security and connecting a window client to a SSID mapped with a custom policy tag created from DNAC	Passed	
DNACJ234S_Reg_707	Configuring a SSID with WPA 2 PSK security and connecting a window client to a SSID mapped with a custom policy tag created from DNAC	To configuring a SSID with WPA 2 PSK security and connecting a window client to a SSID mapped with a custom policy tag created from DNAC	Passed	

DNACJ234S_Reg_708	Configuring a SSID with WPA 2 802.1x security and connecting a window client to a SSID mapped with a custom policy tag created from DNAC	To configuring a SSID with WPA 2 802.1x security and connecting a window client to a SSID mapped with a custom policy tag created from DNAC	Passed	
DNACJ234S_Reg_709	Configuring a SSID with open security and connecting a window client to a SSID mapped with a custom policy tag created from DNAC	To configuring a SSID with Open security and connecting a window client to a SSID mapped with a custom policy tag created from DNAC	Passed	



## Support for next set of AP configurations from DNAC

Logical ID	Title	Description	Status	Defect ID
DNACJ234S_Reg_68	Configure Ap height and validate the ap details	Verify that in AP configuration page AP height should not allow to configure below 3Feet and invalid values	Passed	
DNACJ234S_Reg_69	Verify that in AP configuration page FQDN are not allowed to configure	To Verify that in AP configuration page FQDN are not allowed to configure for primary/secondary/tertiary controller names	Passed	
DNACJ234S_Reg_70	Configure custom primary/secondary/tertiary controller name & IP	Verify that in AP configuration page user can configure custom primary/secondary/tertiary controller name & IP	Passed	
DNACJ234S_Reg_71	Select multiple un-assigned and assigned AP which are joined to same controller	Verify that user can select multiple un-assigned and assigned AP which are joined to same controller at same time for AP configuration	Passed	
DNACJ234S_Reg_72	Check if appropriate error is shown when External antennas are configured	To Check if appropriate error is shown when External antennas are configured on a mix of Internal and External model APs are selected. - DNAC_Guardian_NonFabric	Passed	
DNACJ234S_Reg_73	Verify that AP configuration with clean Air /SI enable	To Verify that AP configuration with clean Air /SI enable on 5GHZ/2.4GHz behaviour when the AP radios are disabled state	Passed	

DNACJ234S_Reg_74	Verify that there is a CLI preview AP configuration	To Verify that there is a CLI preview AP configuration parameters for user to check all the configured which are going to provision for device	Passed	
DNACJ234S_Reg_75	Moving the AP from one floor to another each with a different heights configured.	To verify moving the AP from one floor to another each with a different heights configured.	Passed	
DNACJ234S_Reg_76	Change AP mode to sniffer in ap configuration page	Verify that in AP configuration page user can change AP mode to sniffer and provision the AP the AP should move to sniffer mode	Passed	
DNACJ234S_Reg_77	Configure HA details and validate ap configuration page	Verify the AP configuration which are configured shows proper when HA failover triggered and AP joins to standby controller	Passed	
DNACJ234S_Reg_78	configuring the LED brightness level	configuring the LED brightness level when the AP LED Flash is enabled on Aps	Passed	
DNACJ234S_Reg_79	Verify that AP configuration through PnP	Verify that AP configuration parameter can up be update to the AP which discovered through PnP	Passed	
DNACJ234S_Reg_80	Delete the configuration with clean up	: Delete-Config clean up :Verify Delete device with config clean-up enable	Passed	
DNACJ234S_Reg_81	Delete the configuration without clean up	Delete-Config without clean up :Verify Delete device without config clean-up enable	Passed	

DNACJ234S_Reg_82	schedule the AP configuration workflow	schedule-Workflow :Verify with schedule the AP configuration workflow for setting additional parameter and ensure it is scheduled and executed on scheduled time -	Passed	
DNACJ234S_Reg_83	Verify Activity Task details when AP configuration workflow	Summary/task details :Verify Activity Task details when AP configuration workflow Task is completed and failed for valid reason, verify appropriate error is shown	Passed	

## Support for recurring discovery

Logical ID	Title	Description	Status	Defect ID
DNACJ234S_Reg_436	Enable discovery using recurrence option	To enable discovery using recurrence option	Passed	
DNACJ234S_Reg_437	Schedule recurrence using daily option	To schedule recurrence using daily option	Passed	
DNACJ234S_Reg_438	Schedule recurrence using weekly option	To schedule recurrence using weekly option	Passed	
DNACJ234S_Reg_439	Schedule recurring job using CDP option	To schedule job using CDP option	Passed	
DNACJ234S_Reg_440	Schedule recurring job using LLDP option	To schedule job using LLDP option	Passed	
DNACJ234S_Reg_441	Verify if new devices are discovered during recurrence	To verify if new devices are discovered during recurrence	Passed	
DNACJ234S_Reg_442	Schedule more than recurring discovery jobs	To schedule more than recurring discovery jobs	Passed	
DNACJ234S_Reg_443	Schedule discovery job with incorrect time range	To schedule discovery job with incorrect time range	Passed	
DNACJ234S_Reg_444	Verify the deletion of recurring job	To verify the deletion of recurring job	Passed	
DNACJ234S_Reg_445	Duplicate the recurring job and edit to create another job	To duplicate the recurring job and edit to create another job	Passed	
DNACJ234S_Reg_446	Delete devices from inventory and check if its discovered again during recurring discovery	To delete devices from inventory and check if its discovered again during recurring discovery	Passed	

DNACJ234S_Reg_447	Edit recurring discovery job from tasks page	To edit recurring discovery job from tasks page	Passed	
DNACJ234S_Reg_448	Cancel recurring discovery job from tasks page	To cancel recurring discovery job from tasks page	Passed	

## Support recurrent configuration of AP and radio parameters

Logical ID	Title	Description	Status	Defect ID
DNACJ234S_Reg_84	Configure AP Workflow - User should be able to view/select 2 cards for Recurring & Non-recurring flows	To configure AP Workflow - User should be able to view/select 2 cards for Recurring & Non-recurring flows	Passed	
DNACJ234S_Reg_85	Configure AP Workflow - User should be able to choose available options on expanding 'AP parameters' on selecting the Recurring flow	To configure AP Workflow - User should be able to choose available options on expanding 'AP parameters' on selecting the Recurring flow	Passed	
DNACJ234S_Reg_86	Configure AP Workflow - User should be able to view both assigned or unassigned APs from the 'Select Sites' page	To configure AP Workflow - User should be able to view both assigned or unassigned APs from the 'Select Sites' page	Passed	
DNACJ234S_Reg_87	Recurrent configuration flow - 'Select AP and Radio params' screen - User should be able to select/unselect all AP and Radio parameters	To recurrent configuration flow - 'Select AP and Radio params' screen - User should be able to select/unselect all AP and Radio parameters	Passed	CSCwc66921
DNACJ234S_Reg_88	Recurrent configuration flow - 'Select AP and Radio params' screen -User should be able to enable/disable 'Admin status' for all parameters	To recurrent configuration flow - 'Select AP and Radio params' screen -User should be able to enable/disable 'Admin status' for all parameters	Passed	

DNACJ234S_Reg_89	Recurrent configuration flow - 'Select AP and Radio params' screen - User should be able to enable/disable 'AP LED status' AP parameter	To recurrent configuration flow - 'Select AP and Radio params' screen - User should be able to enable/disable 'AP LED status' AP parameter	Passed	
DNACJ234S_Reg_90	Recurrent configuration flow - 'Schedule Task' screen - Validate scheduling options	To recurrent configuration flow - 'Schedule Task' screen - Validate scheduling options	Passed	
DNACJ234S_Reg_91	Recurrent configuration flow - 'Schedule Task' screen - Validate scheduling options for past time stamp	To recurrent configuration flow - 'Schedule Task' screen - Validate scheduling options for past time stamp	Passed	
DNACJ234S_Reg_92	Recurrent configuration flow - 'Schedule Task' screen - Validate the options available to end the schedule	To recurrent configuration flow - 'Schedule Task' screen - Validate the options available to end the schedule	Passed	
DNACJ234S_Reg_93	Recurrent configuration flow - 'Summary' screen - Validate 'Recurring' mode in summary page content	To recurrent configuration flow - 'Summary' screen - Validate 'Recurring' mode in summary page content	Passed	
DNACJ234S_Reg_94	Recurrent configuration flow - 'Summary' screen - Validate summary page content for recurrence option 'None'	To recurrent configuration flow - 'Summary' screen - Validate summary page content for recurrence option 'None'	Passed	
DNACJ234S_Reg_95	Recurrent configuration flow - 'Summary' screen - Validate all 'Edit' options for each section/page	To recurrent configuration flow - 'Summary' screen - Validate all 'Edit' options for each section/page	Passed	

DNACJ234S_Reg_96	Switch from Recurrent to Non-Recurrent flow - Using the 'Edit' option from Summary page	To switch from Recurrent to Non-Recurrent flow - Using the 'Edit' option from Summary page	Passed	
DNACJ234S_Reg_97	Exit-Resume functionality - User should be able to Exit from any screen of the Recurrent configuration flow and able to resume the task from the Exit point	Exit-Resume functionality - User should be able to Exit from any screen of the Recurrent configuration flow and able to resume the task from the Exit point	Passed	
DNACJ234S_Reg_98	Navigation to previous pages using Milestone option	To navigation to previous pages using Milestone option	Passed	
DNACJ234S_Reg_99	BACK/NEXT button functionality - User should be able to navigate to back/next page from each screen of the workflow	BACK/NEXT button functionality - User should be able to navigate to back/next page from each screen of the workflow	Passed	
DNACJ234S_Reg_100	Validate scheduling functionality for enabling Admin status and AP LED status for recurrence option 'None'	To validate scheduling functionality for enabling Admin status and AP LED status for recurrence option 'None'	Passed	
DNACJ234S_Reg_101	Validate scheduling functionality for disabling Admin status and AP LED status options for recurrence option 'None'	To validate scheduling functionality for disabling Admin status and AP LED status options for recurrence option 'None'	Passed	
DNACJ234S_Reg_102	Validate the AP LED status from inventory page during the scheduled time and after the schedule ends	To validate the AP LED status from inventory page during the scheduled time and after the schedule ends	Passed	



DNACJ234S_Reg_103	Validate scheduling functionality for enabling Admin status and AP LED status for Hourly recurrence	To validate scheduling functionality for enabling Admin status and AP LED status for Hourly recurrence	Passed	
DNACJ234S_Reg_104	Validate scheduling functionality for disabling Admin status and AP LED status for Hourly recurrence	To validate scheduling functionality for disabling Admin status and AP LED status for Hourly recurrence	Passed	
DNACJ234S_Reg_105	Validate scheduling functionality for enabling/disabling Admin status and AP LED status for Daily recurrence	To validate scheduling functionality for enabling/disabling Admin status and AP LED status for Daily recurrence	Passed	
DNACJ234S_Reg_106	Validate scheduling functionality for enabling/disabling Admin status and AP LED status for Weekly recurrence	To validate scheduling functionality for enabling/disabling Admin status and AP LED status for Weekly recurrence	Passed	
DNACJ234S_Reg_107	Validate that the 'Edit recurrence' functionality for the scheduled tasks works from Activities page	To validate that the 'Edit recurrence' functionality for the scheduled tasks works from Activities page	Passed	
DNACJ234S_Reg_108	Validate that the 'Cancel recurrence' functionality for the scheduled tasks works from Activities page	To validate that the 'Cancel recurrence' functionality for the scheduled tasks works from Activities page	Passed	
DNACJ234S_Reg_109	Validate the configuration changes when enabling/disabling params from non-recurrent AP configuration flow	To validate the configuration changes when enabling/disabling params from non-recurrent AP configuration flow	Passed	

DNACJ234S_Reg_110	Verify that the recurrent schedules are not impacted when the AP is provisioned/reprovisioned from the usual provision flow	To verify that the recurrent schedules are not impacted when the AP is provisioned/reprovisioned from the usual provision flow	Passed	
DNACJ234S_Reg_111	Verify that the recurrent schedules of one AP can be over-written by a new task with a different recurrent schedule	To verify that the recurrent schedules of one AP can be over-written by a new task with a different recurrent schedule	Passed	
DNACJ234S_Reg_112	Validate recurrence scheduling during AP reboot/Mode change (when the AP is in unreachable state)	To validate recurrence scheduling during AP reboot/Mode change (when the AP is in unreachable state)	Passed	
DNACJ234S_Reg_113	Verify that the scheduled recurrences are not impacted after an AP reboot/Mode change	To verify that the scheduled recurrences are not impacted after an AP reboot/Mode change	Passed	
DNACJ234S_Reg_114	Verify recurrent scheduling in sniffer mode	To verify recurrent scheduling in sniffer mode	Passed	
DNACJ234S_Reg_115	Changing the AP LED status from Inventory page should still work even when it is disabled via workflow	By changing the AP LED status from Inventory page should still work even when it is disabled via workflow	Passed	
DNACJ234S_Reg_116	Validate recurrent scheduling functionality for different time zones	To validate recurrent scheduling functionality for different time zones	Passed	
DNACJ234S_Reg_117	Verify the AP configurations from Inventory page is updated after the recurrent schedules	To verify the AP configurations from Inventory page is updated after the recurrent schedules	Passed	

DNACJ234S_Reg_118	Validate recurrent scheduling functionality for enabling/disabling Admin status and AP LED status on EWC setup	To validate recurrent scheduling functionality for enabling/disabling Admin status and AP LED status on EWC setup	Passed	
DNACJ234S_Reg_119	Verify that Assurance AP 360 degree page is updated with the status changes after each recurrent schedules	To verify that Assurance AP 360 degree page is updated with the status changes after each recurrent schedules	Passed	
DNACJ234S_Reg_120	Validate all the recurrence scheduling events are captured in audit logs	To validate all the recurrence scheduling events are captured in audit logs	Passed	

# Swim Enhancement

Logical ID	Title	Description	Status	Defect ID
DNACJ234S_Reg_318	Importing a image from a device	To check if the images gets imported from the device or not	Passed	
DNACJ234S_Reg_319	Importing the image through the URL	To import the image using URL and check if the images gets imported or not.	Passed	
DNACJ234S_Reg_320	Import the Invalid image from a device	To import the wrong image using device and check if the images gets imported or not.	Passed	
DNACJ234S_Reg_321	Mark multiple images as golden image	To Mark multiple images as golden image	Passed	
DNACJ234S_Reg_322	Verify Software Distribution for now	To verify Software Distribution for now	Passed	
DNACJ234S_Reg_323	Schedule Software Distribution	To Schedule Software Distribution	Passed	
DNACJ234S_Reg_324	Verify Software Activation After Distribution for Now	To verify Software Activation After Distribution for Now	Passed	
DNACJ234S_Reg_325	Schedule Software Activation After Distribution	To Schedule Software Activation After Distribution	Passed	
DNACJ234S_Reg_326	Verify Distribution is triggered or not	To verify Distribution is triggered or not	Passed	
DNACJ234S_Reg_327	Verify Distribution is triggered or not for multiple devices	To verify Distribution is triggered or not for multiple devices	Passed	
DNACJ234S_Reg_328	Verify Unpack Images status	To verify Unpack Image status	Passed	
DNACJ234S_Reg_329	Verify AP Pre image Download status	To verify AP Pre image Download status	Passed	

DNACJ234S_Reg_330	Verify Distribution and Activation for Now	To verify Distribution and Activation for Now	Passed	
DNACJ234S_Reg_331	Schedule Distribution and Activation	To Schedule Distribution and Activation	Passed	

# Troubleshoot Certification 2.0 - WLC Unmonitored

Logical ID	Title	Description	Status	Defect ID
DNACJ234S_Reg_678	Add network devices like switches, Controllers to DNAC and check if the network devices gets added to DNAC or not	To add network devices like switches, Controllers to DNAC and check if the network devices gets added to DNAC or not	Passed	
DNACJ234S_Reg_679	Add 9800-80 controller and check if the devices gets added to DNAC or not	To add 9800-80 controller and check if the devices gets added to DNAC or not	Passed	
DNACJ234S_Reg_680	Check the Health Score of the controller and Do Unmonitored state analysis if the device is in unmonitored state	To check the Health Score of the controller and Do Unmonitored state analysis if the device is in unmonitored state	Passed	
DNACJ234S_Reg_681	Add 9800-40 controller and check if the devices gets added to DNAC or not	To add 9800-40 controller and check if the devices gets added to DNAC or not	Passed	
DNACJ234S_Reg_682	Check the Health Score of the controller and Do Unmonitored state analysis if the device is in unmonitored state	To check the Health Score of the controller and Do Unmonitored state analysis if the device is in unmonitored state	Passed	
DNACJ234S_Reg_683	Add 9800-L controller and check if the devices gets added to DNAC or not	To add 9800-L controller and check if the devices gets added to DNAC or not	Passed	

DNACJ234S_Reg_684	Check the Health Score of the controller and Do Unmonitored state analysis if the device is in unmonitored state	To check the Health Score of the controller and Do Unmonitored state analysis if the device is in unmonitored state	Passed	
DNACJ234S_Reg_685	Add 9800-CL controller and check if the devices gets added to DNAC or not	To add 9800-CL controller and check if the devices gets added to DNAC or not	Passed	
DNACJ234S_Reg_686	Check the Health Score of the controller and Do Unmonitored state analysis if the device is in unmonitored state	To check the Health Score of the controller and Do Unmonitored state analysis if the device is in unmonitored state	Passed	
DNACJ234S_Reg_687	Add Aireos controller and check if the devices gets added to DNAC or not	To add Aireos controller and check if the devices gets added to DNAC or not	Passed	
DNACJ234S_Reg_688	Check the Health Score of the controller and Do Unmonitored state analysis if the device is in unmonitored state	To check the Health Score of the controller and Do Unmonitored state analysis if the device is in unmonitored state	Passed	
DNACJ234S_Reg_689	Do the Assurance Telemetry Analysis from Tools page	To do the Assurance Telemetry Analysis from Tools page	Passed	
DNACJ234S_Reg_690	Check Whether only No Health devices are shown in the Assurance Telemetry Analysis	To check Whether only No Health devices are shown in the Assurance Telemetry Analysis	Passed	
DNACJ234S_Reg_691	Check whether all the assurance configuration check are done for IOS device	To check whether all the assurance configuration check are done for IOS device	Passed	

DNACJ234S_Reg_692	Check whether all the assurance configuration check are done for AireOS device	To check whether all the assurance configuration check are done for AireOS device	Passed	
-------------------	--	---	--------	--



## Unique clients and users summary

Logical ID	Title	Description	Status	Defect ID
DNACJ234S_Reg_514	Create report with default pre-set options	To create report with default pre-set options	Passed	
DNACJ234S_Reg_515	Test report with 'Global' for location filter	To test report with 'Global' for location filter	Passed	
DNACJ234S_Reg_516	Test report with single area for location filter	To test report with single area for location filter	Passed	
DNACJ234S_Reg_517	Test report with multiple areas for location filter	To test report with multiple areas for location filter	Passed	
DNACJ234S_Reg_518	Test report with single building for location filter	To test report with single building for location filter	Passed	
DNACJ234S_Reg_519	Test report with multiple buildings for location filter	To test report with multiple buildings for location filter	Passed	
DNACJ234S_Reg_520	Test report with single floor for location filter	To test report with single floor for location filter	Passed	
DNACJ234S_Reg_521	Test report with multiple floors for location filter	To test report with multiple floors for location filter	Passed	
DNACJ234S_Reg_522	Test report with mixed area, building, floor for location filter	To test report with mixed area, building, floor for location filter	Passed	
DNACJ234S_Reg_523	Test WLC filter-single	To test WLC filter-single	Passed	
DNACJ234S_Reg_524	Test WLC filter-multiple	To test WLC filter-multiple	Passed	
DNACJ234S_Reg_525	Test with both WLC and Location filter	To test with both WLC and Location filter	Passed	
DNACJ234S_Reg_526	Test report with only one field for content	To test report with only one field for content	Passed	

DNACJ234S_Reg_527	Test report with subset field for content	To test report with subset field for content	Passed	
DNACJ234S_Reg_528	Test report with breakdown by VLAN	To test report with breakdown by VLAN	Passed	
DNACJ234S_Reg_529	Test report with breakdown by SSID	To test report with breakdown by SSID	Passed	
DNACJ234S_Reg_530	Test report with breakdown by Vendor	To test report with breakdown by Vendor	Passed	
DNACJ234S_Reg_531	Test report with breakdown by protocol	To test report with breakdown by protocol	Passed	
DNACJ234S_Reg_532	Test report sort by 'Client Count'	To test report sort by 'Client Count'	Passed	
DNACJ234S_Reg_533	Test report schedule function	To test report schedule function	Passed	
DNACJ234S_Reg_534	Verify report data accuracy with different type of clients	To verify report data accuracy with different type of APs	Passed	

## Worst Interferer

Logical ID	Title	Description	Status	Defect ID
DNACJ234S_Reg_284	Generate the Worst Interferer report as CSV format	To Check the report generated as CSV format or not	Passed	
DNACJ234S_Reg_285	Generate the Worst Interferer report as JSON format	To Check the report generated as JSON format or not	Passed	
DNACJ234S_Reg_286	Generate the Worst Interferer report as TDE format	To Check the report generated as TDE format or not	Passed	
DNACJ234S_Reg_287	Generate the Worst Interferer report with schedule time as Run now	To Check the report generated in schedule Run now time	Passed	
DNACJ234S_Reg_288	Generate the Worst Interferer report with schedule time as Run later(One-Time)	To Check the report generated in schedule Run Later time	Passed	
DNACJ234S_Reg_289	Generate the Worst Interferer report with schedule time as Run recurring	To Check the report generated in schedule Run recurring time	Passed	
DNACJ234S_Reg_290	Generate the Worst interferer report with email notification	To Verify the notification generated or not with valid report details	Passed	
DNACJ234S_Reg_291	Generate the Worst interferer report with webhook notification	To Verify the notification generated or not with valid report details	Passed	
DNACJ234S_Reg_292	Duplicate report option using existing report	To duplicate report option using existing report	Passed	
DNACJ234S_Reg_293	Delete report using delete option under action tab	To Delete report using delete option under action tab	Passed	

DNACJ234S_Reg_294	Adding multiple locations during report generation.	To add multiple locations during report generation.	Passed	
DNACJ234S_Reg_295	Validate details in generated report	To Validate details in generated report	Passed	
DNACJ234S_Reg_296	Verify Interferer details in generated report.	To Verify Interferer details in generated report.	Passed	
DNACJ234S_Reg_297	Generating interference in APs connected to eWLC and check the report in DNAC	To generate interference in Aps connected to eWLC and check the report in DNAC	Passed	
DNACJ234S_Reg_298	Associate a 9105 AP to eWLC and generating interference report	To associate a 9105 AP to eWLC and generating interference report	Passed	
DNACJ234S_Reg_299	Associate a 9120 AP to eWLC and generating interference report	To associate a 9120 AP to eWLC and generating interference report	Passed	
DNACJ234S_Reg_300	Associate a 9130 AP to eWLC and generating interference report	To associate a 9130 AP to eWLC and generating interference report	Passed	



## Related Documents

---

- [Related Documentation, on page 176](#)

## Related Documentation

### **Cisco Catalyst 9800 Series Wireless Controller Software Configuration Guide**

[https://www.cisco.com/c/en/us/td/docs/wireless/controller/9800/17-9/config-guide/b\\_wl\\_17\\_9\\_cg.html](https://www.cisco.com/c/en/us/td/docs/wireless/controller/9800/17-9/config-guide/b_wl_17_9_cg.html)

### **Cisco Catalyst 9800 Series Wireless Controller 17.9 Configuration Guide**

[https://www.cisco.com/c/en/us/td/docs/wireless/controller/9800/17-9/config-guide/b\\_wl\\_17\\_9\\_cg.html](https://www.cisco.com/c/en/us/td/docs/wireless/controller/9800/17-9/config-guide/b_wl_17_9_cg.html)

### **Cisco Catalyst 9800 Series Wireless Controller 17.9 Release Notes**

<https://www.cisco.com/c/en/us/td/docs/wireless/controller/9800/17-9/release-notes/rn-17-9-9800.html>

### **Release Notes for Cisco Digital Network Architecture Spaces**

<https://www.cisco.com/c/en/us/td/docs/wireless/cisco-dna-spaces/release-notes/b-cisco-dnas-rn.html>

### **Cisco Catalyst 9600 Series Switches 17.9 Release Notes**

[https://www.cisco.com/c/en/us/td/docs/switches/lan/catalyst9600/software/release/17-9/release\\_notes/ol-17-9-9600.html](https://www.cisco.com/c/en/us/td/docs/switches/lan/catalyst9600/software/release/17-9/release_notes/ol-17-9-9600.html)

### **Release Notes Cisco Digital Network Architecture Center**

[https://www.cisco.com/c/en/us/td/docs/cloud-systems-management/network-automation-and-management/dna-center/2-3-4/release\\_notes/b\\_cisco\\_dna\\_center\\_rn\\_2\\_3\\_4.html](https://www.cisco.com/c/en/us/td/docs/cloud-systems-management/network-automation-and-management/dna-center/2-3-4/release_notes/b_cisco_dna_center_rn_2_3_4.html)

### **PI 3.10 User Guide**

[https://www.cisco.com/c/en/us/td/docs/net\\_mgmt/prime/infrastructure/3-10/user/guide/ciscoprimeinfrastructure\\_3\\_10\\_userguide.html](https://www.cisco.com/c/en/us/td/docs/net_mgmt/prime/infrastructure/3-10/user/guide/ciscoprimeinfrastructure_3_10_userguide.html)

### **ISE 3.2 Release Notes**

[https://www.cisco.com/c/en/us/td/docs/security/ise/3-2/release\\_notes/b\\_ise\\_32\\_RN.html](https://www.cisco.com/c/en/us/td/docs/security/ise/3-2/release_notes/b_ise_32_RN.html)