



REVIEW DRAFT - CISCO CONFIDENTIAL



Test Results Summary for Cisco DNA Center Automation & Assurance (Release Version 2.2.3)

First Published: 2021-09-03

Last Modified: 2021-09-06

Americas Headquarters

Cisco Systems, Inc.
170 West Tasman Drive
San Jose, CA 95134-1706
USA
<http://www.cisco.com>
Tel: 408 526-4000
800 553-NETS (6387)
Fax: 408 527-0883



CONTENTS

CHAPTER 1

Overview 1

Cisco DNA Center test 1

CHAPTER 2

Test topology and Environment Matrix 7

Test Topology 7

Component Matrix 8

What's New ? 10

Open Caveats 10

Resolved Caveats 11

CHAPTER 3

New Features 13

EWLC Brownfield - SSID Override 13

AP Impersonation 17

Radius Profiling 18

MAC Randomization 21

AP RMA 2.0 22

Rogue 24

Called Station ID 25

Mesh AP Support 28

Guest Anchor 31

3D MAP Support 34

Bulk AP Name Change 36

CHAPTER 4

Regression Features 39

Overall and Network Health Dashboard 39

Mesh Configuration support from DNA Center 42

REVIEW DRAFT - CISCO CONFIDENTIAL

| | |
|---|----|
| Client 360 | 45 |
| Health Analytics | 47 |
| Network Device | 48 |
| Endpoints 360 | 50 |
| C9105 EWC/AP Support | 52 |
| SWIM | 53 |
| PnP | 54 |
| Mobility configuration | 56 |
| DNA Space Integration | 57 |
| RSSI and SNR in ASSOC request | 58 |
| New AP Support(ICAP) | 60 |
| Assurance workflow changes to support Device RMA | 62 |
| Assurance workflow changes to support AP Refresh | 63 |
| Smart Licencing | 64 |
| All Data Report - Inventory and SWIM | 65 |
| RRM assurance for granular reasons for power and channel change | 67 |
| Assurance: Client 360 Usage Events | 69 |
| Config Wireless | 70 |

CHAPTER 5

| | |
|--------------------------|-----------|
| Related Documents | 73 |
| Related Documentation | 73 |



CHAPTER 1

Overview

- [Cisco DNA Center test](#) , on page 1

Cisco DNA Center test

Cisco DNA Center test , an integral part of the enterprise wireless solution, is a program that validates various Cisco Wireless Products and Features. This is achieved by testing the latest versions of Cisco wireless products

Cisco DNA Center for Japan , in turn is an add-on testing at the solution level, where the requirements gathered are specific to Japanese usage and market. The requirements are derived based on the following:

- New features in DNA center 2.2.3
- High priority scenarios and basic regression features
- Inputs from Cisco SEs/ TAC

The test execution is carried out on selected Cisco Wireless LAN products, which affect the Japanese segment that are prioritized by Cisco Japan team.

The following products are covered in the test execution:

- Cisco Catalyst 9800 Series Wireless Controller
- Cisco Catalyst 9800-CL Wireless Controller for Cloud
- Cisco Embedded Wireless Controller on Catalyst Access Points
- Cisco DNA Spaces
- Cisco DNA Connector
- ISE(VM)
- Cisco ISR 1100
- Cisco AP c9115
- Cisco AP c9120
- Cisco AP c9130
- Cisco AP c9105

REVIEW DRAFT - CISCO CONFIDENTIAL

- Access Point 4800
- Access Point 1810

Acronyms

| Acronym | Description |
|----------------|--|
| AAA | Authentication Authorization and Accounting |
| ACL | Access Control List |
| ACS | Access Control Server |
| AKM | Authentication Key Management |
| AP | Access Point |
| API | Application Programming Interface |
| APIC-EM | Application Policy Infrastructure Controller - Enterprise Module |
| ATF | Air-Time Fairness |
| AVC | Application Visibility and Control. |
| BGN | Bridge Group Network |
| BLE | Bluetooth Low Energy |
| BYOD | Bring Your Own Device |
| CA | Central Authentication |
| CAC | Call Admissions Control |
| CAPWAP | Control and Provisioning of Wireless Access Point |
| CCKM | Cisco Centralized Key Management |
| CCN | Channel Change Notification |
| CCX | Cisco Compatible Extensions |
| CDP | Cisco Discovery Protocol |
| CKIP | Cisco Key Integrity Protocol |
| CMX | Connected Mobile Experience |
| CVBF | Cisco Vector Beam Forming |
| CWA | Central Web Authentication |
| DCA | Dynamic Channel Assignment |
| DMZ | Demilitarized Zone |
| DNS | Domain Name System |
| DNA-C | Digital Network Architecture Center |
| DTIM | Delivery Traffic Indication Map |

REVIEW DRAFT - CISCO CONFIDENTIAL

| Acronym | Description |
|----------------|--|
| DSCP | Differentiated Services Code Point |
| DTLS | Datagram Transport Layer Security |
| EAP | Extensible Authentication Protocol |
| EULA | End User Licence Agreement |
| EWC | Embedded Wireless Controller |
| FLA | Flex Local Authentication |
| FLS | Flex Local Switching |
| FT | Fast Transition |
| FTP | File Transfer Protocol |
| FW | Firm Ware |
| HA | High Availability |
| H-REAP | Hybrid Remote Edge Access Point |
| IOS | Internetwork Operating System |
| ISE | Identity Service Engine |
| ISR | Integrated Services Router |
| LAG | Link Aggregation |
| LEAP | Lightweight Extensible Authentication Protocol |
| LSS | Location Specific Services |
| LWAPP | Lightweight Access Point Protocol |
| MAP | Mesh Access Point |
| MCS | Modulation Coding Scheme |
| MFP | Management Frame Protection |
| mDNS | multicast Domain Name System |
| MIC | Message Integrity Check |
| MSE | Mobility Service Engine |
| MTU | Maximum Transmission Unit |
| NAC | Network Admission Control |
| NAT | Network Address Translation |
| NBAR | Network Based Application Recognition |
| NCS | Network Control System |
| NGWC | Next Generation Wiring closet |
| NMSP | Network Mobility Services Protocol |

REVIEW DRAFT - CISCO CONFIDENTIAL

| Acronym | Description |
|----------------|--|
| OEAP | Office Extended Access Point |
| PEAP | Protected Extensible Authentication Protocol |
| PEM | Policy Enforcement Module |
| PI | Prime Infrastructure |
| PMF | Protected Management Frame |
| POI | Point of Interest |
| PPPoE | Point-to-Point Protocol over Ethernet |
| PSK | Pre-shared Key |
| QOS | Quality of service |
| RADIUS | Remote Authentication Dial-In User Service |
| RAP | Root Access Point |
| RP | Redundancy Port |
| RRM | Radio Resource Management |
| SDN | Software Defined Networking |
| SOAP | Simple Object Access Protocol |
| SFTP | Secure File Transfer Protocol |
| SNMP | Simple Network Management Protocol |
| SS | Spatial Stream |
| SSID | Service Set Identifier |
| SSO | Single Sign On |
| SSO | Stateful Switch Over |
| SWIM | Software Image Management |
| TACACS | Terminal Access Controller Access Control System |
| TCP | Transmission Control Protocol |
| TFTP | Trivial File Transfer Protocol |
| TLS | Transport Layer Security |
| UDP | User Datagram Protocol |
| vWLC | Virtual Wireless LAN Controller |
| VPC | Virtual port channel |
| VPN | Virtual Private Network |
| WEP | Wired Equivalent Privacy |
| WGB | Workgroup Bridge |

REVIEW DRAFT - CISCO CONFIDENTIAL

| Acronym | Description |
|----------------|--------------------------------------|
| wIPS | Wireless Intrusion Prevention System |
| WLAN | Wireless LAN |
| WLC | Wireless LAN Controller |
| WPA | Wi-Fi Protected Access |
| WSM | Wireless Security Module |

REVIEW DRAFT - CISCO CONFIDENTIAL

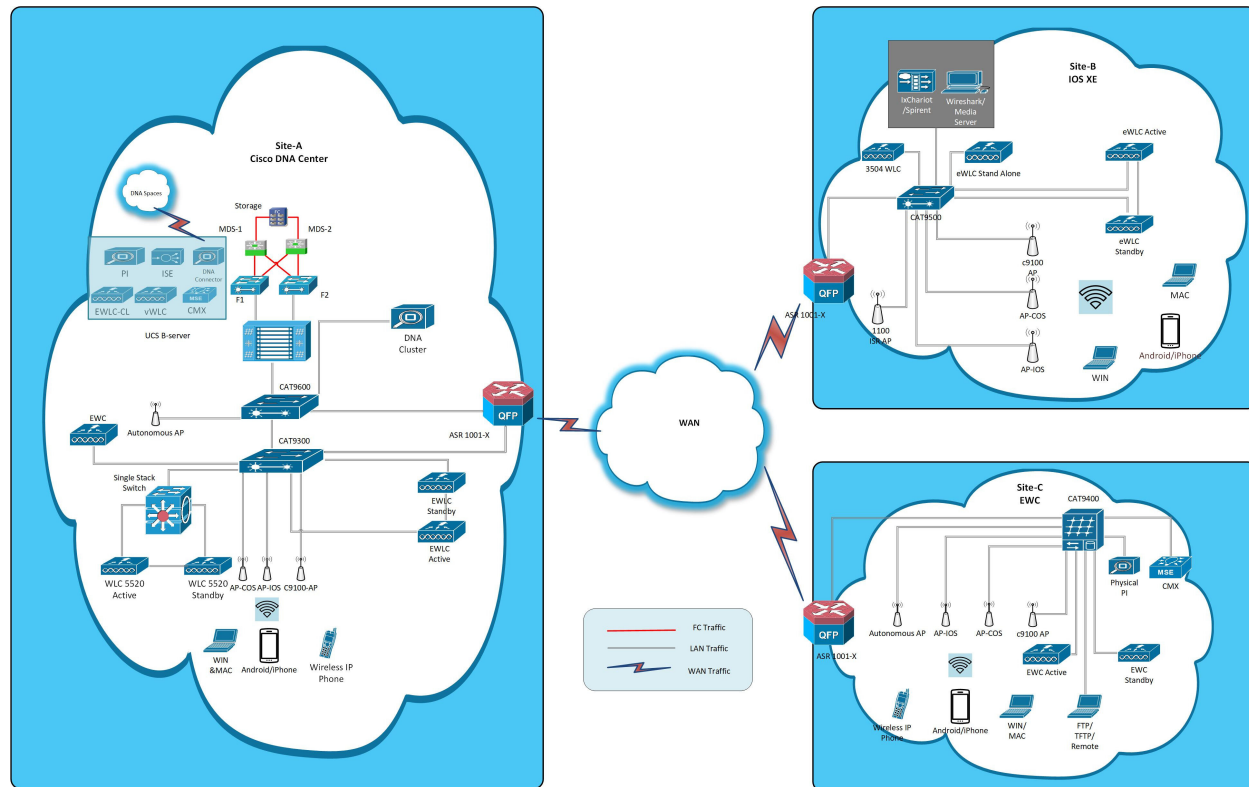


CHAPTER 2

Test topology and Environment Matrix

- Test Topology, on page 7
- Component Matrix, on page 8
- What's New ?, on page 10
- Open Caveats, on page 10
- Resolved Caveats, on page 11

Test Topology



REVIEW DRAFT - CISCO CONFIDENTIAL**Component Matrix**

| Category | Component | Version |
|--------------|--|------------------|
| Controller | Cisco Catalyst 9800-40 Wireless Controller | 17.6 |
| | Cisco Catalyst 9800-80 Wireless Controller | 17.6 |
| | Cisco Catalyst 9800-CL Wireless Controller for Cloud | 17.6 |
| | Cisco Catalyst 9800-L Wireless Controller | 17.6 |
| | Cisco Embedded Wireless Controller on Catalyst Access Points | 17.6 |
| | Virtual Controller | 8.10.121.0 |
| Applications | Cisco DNA Center | 2.2.3 |
| | Cisco DNA Spaces | Cloud (Jul 2021) |
| | Cisco DNA Spaces Connector | 2.3.1 |
| | Prime Infrastructure (Virtual Appliance, UCS based) | 3.9.0.0 |
| | ISE(VM) | 3.0.0.393 |
| | Cisco Jabber for Windows, iPhone | 12.8 |
| | Cisco Air Provisioning App | 1.4 |
| | Cisco Wireless App | 1.0.228 |
| Access Point | Cisco AP 9115 | 17.6 |
| | Cisco AP 9120 | 17.6 |
| | Cisco AP 9130 | 17.6 |
| | Cisco AP 9105 | 17.6 |
| | Cisco 1100 ISR | 17.6 |
| | Cisco AP 4800 | 15.3 |
| | Cisco AP 1810 | 15.3 |

REVIEW DRAFT - CISCO CONFIDENTIAL

| Category | Component | Version |
|-----------------------------|--|-------------------------------------|
| Switch | Cisco Cat 9300 | 17.6 |
| | Cisco Cat 9200L | 17.6 |
| | Cisco Cat 9800 | 17.6 |
| | Cisco 3750V2 switch | 15.0(2)SE2 |
| | Cisco Cat 6509-E | 15.1(1)SY1 |
| Chipset | 5300, 6300 AGN | 15.40.41.5058 |
| | 7265 AC | 21.40.2 |
| | Airport Extreme | 7.9.1 |
| Client | Operating System(JOS) | Windows 8 & 8.1 Enterprise |
| | | Windows XP Professional |
| | | Windows 10 |
| | Apple Mac Book Pro, Apple Mac Book Air (JP Locale) | Mac OS 11.5 |
| | iPad Pro | iOS 14.7 |
| | iPhone 6, 6S ,7 & 11 (JP Locale) | iOS 14.7 |
| | Samsung Galaxy S7,S10, Nexus 6P, Sony Xperia XZ | Android 10.0 |
| | Wireless IP Phone 8821 | 11.0.4-14 |
| | End points | Windows 7 Enterprise |
| | | Apple Mac 11.2.1 |
| | | Windows 8 & 8.1 |
| | | iPhone 6,6S ,7 & 11 |
| | | Windows 10 |
| | Samsung Galaxy S4, S7,S10, Nexus 6P, Sony Xperia | |
| Cisco AnyConnect VPN Client | 4.9.01095 | |
| MS surface GO | Windows 10 | |
| Module | Hyper location Module | NA |
| Active Directory | AD | Windows server 2019 |
| Call Control | Cisco Unified Communications Manager | 12.5.0.99832-3/12.5.0.99832-3-1(JP) |

REVIEW DRAFT - CISCO CONFIDENTIAL

| Category | Component | Version |
|----------|-----------------|---------------|
| Browsers | IE | 11.0 |
| | Mozilla Firefox | 90.0.2 |
| | Safari | 14.1 |
| | Chrome | 92.0.4515.107 |

What's New ?

Cisco Catalyst 9800 Series Wireless Controller

- EWLC Brownfield - SSID Override
- AP Impersonation
- Radius Profiling
- MAC Randomization
- AP RMA 2.0
- Rogue
- Called Station ID
- Mesh AP Support
- Guest Anchor
- 3D MAP Support
- Bulk AP Name Change

Open Caveats

| Defect ID | Title |
|------------|--|
| CSCvy88094 | Inventory preview page - Unable to scroll and see all the sites in the network hierarchy |
| CSCvy64887 | DNAC Shockwave Upgrade struck at 75% |
| CSCvy50861 | Logging & Default options are missing in Japanese GUI |
| CSCvz08188 | WLC HA - Error popup has junk characters on Japanese locale |
| CSCvy87820 | Group based Access Control Landing Page is different in Japanese UI |

REVIEW DRAFT - CISCO CONFIDENTIAL

| | |
|------------|--|
| CSCvy87825 | Inventory error popup - text seems to be misaligned and merged for multiple error popups |
| CSCvy86179 | Unable to import bulk devices in DNAC PnP in Japanese |
| CSCvz08100 | Action dropdown list is blank for virtual network segment view in Japanese UI |
| CSCvz07951 | Virtual Networks Options name showing "undefined" in Japanese UI |
| CSCvy74664 | Unable to use Inventory Page scrollbar as it is continuously flickering |
| CSCvz08066 | Device 360 option redirected to blank page while clicking from inventory details page |
| CSCvz02357 | While Provisioning device by configuration preview Not Redirecting to Related page in DNAC |
| CSCvz01408 | data not showing while filtered by message field in validation run details |
| CSCvy95550 | Text and column not aligned properly |

Resolved Caveats

| Defect ID | Title |
|------------|--|
| CSCvy74441 | Unable to load Device 360 and Client 360 page in Japanese |
| CSCvy26450 | Client page (Wired/Wireless) is not loading in Japanese |
| CSCvy88199 | filter option not working properly for site option in Activity task page |
| CSCvy88027 | Inventory preview page - Filter box overlaps with provision details popup |
| CSCvy80086 | NCND number is alone shown in the error message in MOTD in DNAC Japanese UI |
| CSCvy68210 | Error message displays Backend Data while creating SSID |
| CSCvy48363 | Japanese GUI is added in-between the title bar |
| CSCvy48190 | WLAN - Unable to configure macfiltering option for personal security |
| CSCvy44457 | Config AP workflow - Null values observed while provisioning for floors assigned to site |

REVIEW DRAFT - CISCO CONFIDENTIAL

| | |
|------------|--|
| CSCvy88323 | Fabric Site - Filter option not working in Japanese GUI |
| CSCvy88133 | Table size increasing while continuously clicking the "apply pattern" button. |
| CSCvy85731 | Displaying inappropriate device name while selecting devices in cli preview page |
| CSCvy38014 | Network Device data is not showing in Japanese UI |
| CSCvy88030 | AAA radius attribute config delete button is not arranged properly in Japanese UI |
| CSCvy88332 | No of hosts-Tooltip content missing in Japanese GUI |
| CSCvy86432 | Time in the Network Device chart is hidden |
| CSCvz01704 | Unable to add more than 4 contract in DNAC policy -Japanese GUI |
| CSCvz10415 | Blank page is allowing to do add/delete/edit options in model config editor page |
| CSCvy93968 | Software updates - headers incorrectly aligned in package info tooltip for Japanese locale |
| CSCvy93925 | Shockwave - Download text seems to be cutoff for Japanese locale in s/w update page |
| CSCvy88180 | After deploying device provision, the description is not updating properly in Japanese UI |
| CSCvy86482 | Wireless SSID exit Pop Up page buttons not arranged properly in Japanese UI |



CHAPTER 3

New Features

- [EWLC Brownfield - SSID Override, on page 13](#)
- [AP Impersonation, on page 17](#)
- [Radius Profiling, on page 18](#)
- [MAC Randomization, on page 21](#)
- [AP RMA 2.0, on page 22](#)
- [Rogue, on page 24](#)
- [Called Station ID, on page 25](#)
- [Mesh AP Support, on page 28](#)
- [Guest Anchor, on page 31](#)
- [3D MAP Support, on page 34](#)
- [Bulk AP Name Change, on page 36](#)

EWLC Brownfield - SSID Override

| Logical ID | Title | Description | Status | Defect ID |
|------------------|---|--|--------|-----------|
| DNACJ223S_SSID_1 | Adding different network devices in DNAC | To add network devices like switches, Controllers to DNAC and check if the network devices gets added to DNAC or not | Passed | |
| DNACJ223S_SSID_2 | Provisioning a the network device through inventory page via DNAC | To provision the network device via DNAC through the option in inventory page | Passed | |

REVIEW DRAFT - CISCO CONFIDENTIAL

| | | | | |
|------------------|--|--|--------|------------|
| DNACJ223S_SSID_3 | Assigning WLAN to the single floor created and changing the security type | To assign a WLAN created to the floor created and changing the security of the WLAN and check if the security is changed or not | Passed | CSCvy86482 |
| DNACJ223S_SSID_4 | Connecting a client to WLAN assigning it to single floor created and changing the security type . | To assign a WLAN created to the floor created and changing the security of the WLAN to connect a client before and after security change . | Passed | |
| DNACJ223S_SSID_5 | Creating a site with multiple floor and Changing the security for each floor | To create a site with multiple floor and mapping the WLAN to each floor and changing the security | Passed | |
| DNACJ223S_SSID_6 | Overriding the security of each floor with different(WPA 2) security and connecting a window client | To create a site with multiple floor and changing the security of each floor with different security and connecting a client | Passed | |
| DNACJ223S_SSID_7 | Overriding the security of each floor with different (WPA 2) security and connecting a Android client | To create a site with multiple floor and changing the security of each floor with different security and connecting a client | Passed | |
| DNACJ223S_SSID_8 | Overriding the security of each floor with different (WPA 2) security and connecting a MS surface client | To create a site with multiple floor and changing the security of each floor with different security and connecting a client | Passed | |

REVIEW DRAFT - CISCO CONFIDENTIAL

| | | | | |
|-------------------|---|--|--------|--|
| DNACJ223S_SSID_9 | Overriding the security of each floor with different (WPA 2) security and connecting a Iphone client | To create a site with multiple floor and changing the security of each floor with different security and connecting a client | Passed | |
| DNACJ223S_SSID_10 | Overriding the security of each floor with different (WPA 2) security and connecting a MAC client | To create a site with multiple floor and changing the security of each floor with different security and connecting a client | Passed | |
| DNACJ223S_SSID_11 | Connecting a Window client to WPA 3 security WLAN assigned to multiple floor and changing the AKM type of multiple floors | To connect a Window client to WPA 3 security WLAN assigned to multiple floor and changing the AKM type of multiple floors and check the client behaviour | Passed | |
| DNACJ223S_SSID_12 | Connecting a MS surface client to WPA 3 security WLAN assigned to multiple floor and changing the AKM type of multiple floors | To connect a MS Surface client to WPA 3 security WLAN assigned to multiple floor and changing the AKM type of multiple floors and check the client behaviour | Passed | |
| DNACJ223S_SSID_13 | Connecting a Android client to WPA 3 security WLAN assigned to multiple floor and changing the AKM type of multiple floors | To connect a Android client to WPA 3 security WLAN assigned to multiple floor and changing the AKM type of multiple floors and check the client behaviour | Passed | |

REVIEW DRAFT - CISCO CONFIDENTIAL

| | | | | |
|-------------------|---|--|--------|--|
| DNACJ223S_SSID_14 | Connecting a Iphone client to WPA 3 security WLAN assigned to multiple floor and changing the AKM type of multiple floors | To connect a Iphone client to WPA 3 security WLAN assigned to multiple floor and changing the AKM type of multiple floors and check the client behaviour | Passed | |
| DNACJ223S_SSID_15 | Connecting a MAC OS client to WPA 3 security WLAN assigned to multiple floor and changing the AKM type of multiple floors | To connect a MAC client to WPA 3 security WLAN assigned to multiple floor and changing the AKM type of multiple floors and check the client behaviour | Passed | |
| DNACJ223S_SSID_16 | Overriding the AAA of each floor with different AAA server and connecting a window client | To override the AAA of each floor with different security and connecting a client | Passed | |
| DNACJ223S_SSID_17 | Overriding the AAA of each floor with different AAA server and connecting a MS surface client | To override the AAA of each floor with different security and connecting a client | Passed | |
| DNACJ223S_SSID_18 | Overriding the AAA of each floor with different AAA server and connecting a Android client | To override the AAA of each floor with different security and connecting a client | Passed | |
| DNACJ223S_SSID_19 | Overriding the AAA of each floor with different AAA server and connecting a Iphone client | To override the AAA of each floor with different security and connecting a client | Passed | |
| DNACJ223S_SSID_20 | Overriding the AAA of each floor with different AAA server and connecting a MAC client | To override the AAA of each floor with different security and connecting a client | Passed | |

REVIEW DRAFT - CISCO CONFIDENTIAL**AP Impersonation**

| Logical ID | Title | Description | Status | Defect ID |
|-----------------|--|--|--------|-----------|
| DNACJ223S_IMP_1 | Enable AP Impersonation on DNAC | To enable AP Impersonation on DNAC | Passed | |
| DNACJ223S_IMP_2 | Enable/Disable Rogue detection on DNAC | To Enable/Disable Rogue detection on DNAC | Passed | |
| DNACJ223S_IMP_3 | Verify AP Impersonation works for 9115AP connected to eWLC | To verify AP Impersonation works for 9115AP connected to eWLC | Passed | |
| DNACJ223S_IMP_4 | Verify AP Impersonation works for 9120AP connected to eWLC | To verify AP Impersonation works for 9120AP connected to eWLC | Passed | |
| DNACJ223S_IMP_5 | Verify AP Impersonation works for 9130AP connected to eWLC | To verify AP Impersonation works for 9130AP connected to eWLC | Passed | |
| DNACJ223S_IMP_6 | Verify AP Impersonation works for 4800AP connected to eWLC | To verify AP Impersonation works for 4800AP connected to eWLC | Passed | |
| DNACJ223S_IMP_7 | Detect AP Impersonation using 9115AP in Flex Mode and verify details of AP Impersonation | To detect AP Impersonation using 9115AP in Flex Mode and to verify details of AP Impersonation | Passed | |
| DNACJ223S_IMP_8 | Detect AP Impersonation using 9120AP in Flex Mode and verify details of AP Impersonation | To detect AP Impersonation using 9120AP in Flex Mode and to verify details of AP Impersonation | Passed | |
| DNACJ223S_IMP_9 | Detect AP Impersonation using 9130AP in Flex Mode and verify details of AP Impersonation | To detect AP Impersonation using 9130AP in Flex Mode and to verify details of AP Impersonation | Passed | |

REVIEW DRAFT - CISCO CONFIDENTIAL

| | | | | |
|------------------|--|--|--------|--|
| DNACJ223S_IMP_10 | Detect AP Impersonation using 4800AP in Flex Mode and verify details of AP Impersonation | To detect AP Impersonation using 4800AP in Flex Mode and to verify details of AP Impersonation | Passed | |
| DNACJ223S_IMP_11 | Verify AP Impersonation details from Threat 360 View | To verify AP Impersonation details from Threat 360 View | Passed | |
| DNACJ223S_IMP_12 | Verify High Threats based on the time interval | To verify High Threats based on the time interval | Passed | |
| DNACJ223S_IMP_13 | Generate AP Impersonation Rogue report | To generate AP Impersonation Rogue report | Passed | |
| DNACJ223S_IMP_14 | Export AP Impersonation Rogue report | To export AP Impersonation Rogue report | Passed | |
| DNACJ223S_IMP_15 | Verify High Threats through map | To verify High Threats through map | Passed | |
| DNACJ223S_IMP_16 | Create and verify Rogue Rules | To create and verify Rogue Rules | Passed | |

Radius Profiling

| Logical ID | Title | Description | Status | Defect ID |
|----------------|--|---|--------|-----------|
| DNACJ223S_RP_1 | Verify whether your able to configure PSN(Policy Service Node) or not for Radius Profiling | To verify whether your able to configure PSN(Policy Service Node) or not for Radius Profiling | Passed | |
| DNACJ223S_RP_2 | Verify whether your able to configure AAA or not for Radius Profiling | To verify whether your able to configure AAA or not for Radius Profiling | Passed | |

REVIEW DRAFT - CISCO CONFIDENTIAL

| | | | | |
|----------------|--|--|--------|--|
| DNACJ223S_RP_3 | Create Enterprise SSID with Radius Profiling enabled and provision the device - Verify that Radius Profiling option is enabled on the policy profile | To create Enterprise SSID with Radius Profiling enabled and provision the device - To verify that Radius Profiling option is enabled on the policy profile | Passed | |
| DNACJ223S_RP_4 | Disable Radius profiling in UI and Re provision Enterprise SSID - Verify that Radius profiling is disabled on the policy profile | To disable Radius profiling in UI and Re provision Enterprise SSID - To verify that Radius profiling is disabled on the policy profile | Passed | |
| DNACJ223S_RP_5 | Create Enterprise SSID with Radius Profiling disabled and provision the device - Verify that Radius Profiling option is disabled on the policy profile | To create Enterprise SSID with Radius Profiling disabled and provision the device - To verify that Radius Profiling option is disabled on the policy profile | Passed | |
| DNACJ223S_RP_6 | Enable Radius profiling in UI and Re provision the SSID - Verify that Radius profiling is enabled on the policy profile | To enable Radius profiling in UI and Re provision the SSID - To verify that Radius profiling is enabled on the policy profile | Passed | |
| DNACJ223S_RP_7 | Create Personal SSID with Radius Profiling enabled and provision the device - Verify that Radius Profiling option is enabled on the policy profile | To create Personal SSID with Radius Profiling enabled and provision the device - To verify that Radius Profiling option is enabled on the policy profile | Passed | |
| DNACJ223S_RP_8 | Disable Radius profiling in UI and Re provision Personal SSID - Verify that Radius profiling is disabled on the policy profile | To disable Radius profiling in UI and Re provision Personal SSID - To verify that Radius profiling is disabled on the policy profile | Passed | |

REVIEW DRAFT - CISCO CONFIDENTIAL

| | | | | |
|-----------------|--|--|--------|--|
| DNACJ223S_RP_9 | Create Personal SSID with Radius Profiling disabled and provision the device - Verify that Radius Profiling option is disabled on the policy profile | To create Personal SSID with Radius Profiling disabled and provision the device - To verify that Radius Profiling option is disabled on the policy profile | Passed | |
| DNACJ223S_RP_10 | Enable Radius profiling in UI and Re provision the SSID - Verify that Radius profiling is enabled on the policy profile | To enable Radius profiling in UI and Re provision the SSID - To verify that Radius profiling is enabled on the policy profile | Passed | |
| DNACJ223S_RP_11 | Create Guest SSID with Radius Profiling enabled and provision the device - Verify that Radius Profiling option is enabled on the policy profile | To create Guest SSID with Radius Profiling enabled and provision the device - To verify that Radius Profiling option is enabled on the policy profile | Passed | |
| DNACJ223S_RP_12 | Disable Radius profiling in UI and Re provision Enterprise SSID - Verify that Radius profiling is disabled on the policy profile | To disable Radius profiling in UI and Re provision Enterprise SSID - To verify that Radius profiling is disabled on the policy profile | Passed | |
| DNACJ223S_RP_13 | Create Guest SSID with Radius Profiling disabled and provision the device - Verify that Radius Profiling option is disabled on the policy profile | To create Guest SSID with Radius Profiling disabled and provision the device - To verify that Radius Profiling option is disabled on the policy profile | Passed | |
| DNACJ223S_RP_14 | Enable Radius profiling in UI and Re provision the SSID - Verify that Radius profiling is enabled on the policy profile | To enable Radius profiling in UI and Re provision the SSID - To verify that Radius profiling is enabled on the policy profile | Passed | |

REVIEW DRAFT - CISCO CONFIDENTIAL

| | | | | |
|-----------------|---|---|--------|--|
| DNACJ223S_RP_15 | Remove AAA(PSN) server from the wlan and reprovision the SSID - Verify that Radius Profiling option is disabled on the policy profile | To remove AAA(PSN) server from the wlan and reprovision the SSID - To verify that Radius Profiling option is disabled on the policy profile | Passed | |
| DNACJ223S_RP_16 | Connect Windows client and verify additional information | To connect Windows client and verify additional information | Passed | |
| DNACJ223S_RP_17 | Connect Android client and verify additional information | To connect Android client and verify additional information | Passed | |
| DNACJ223S_RP_18 | Connect MAC client and verify additional information | To connect MAC client and verify additional information | Passed | |
| DNACJ223S_RP_19 | Connect IOS client and verify additional information | To connect IOS client and verify additional information | Passed | |
| DNACJ223S_RP_20 | Connect Surface client and verify additional information | To connect Surface client and verify additional information | Passed | |
| DNACJ223S_RP_21 | Verify Roaming between controllers after enabling Radius Profiling | To verify Roaming between controllers after enabling Radius Profiling | Passed | |

MAC Randomization

| Logical ID | Title | Description | Status | Defect ID |
|-----------------|---|--|--------|-----------|
| DNACJ223S_MR_01 | Add AAA server in DNAC and enable pxGrid in ISE | To Add AAA Policy server in DNAC and enable pxGrid in ISE | Passed | |
| DNACJ223S_MR_02 | Provision EWLC to DNAC and join client with burned-in MAC | To Provision EWLC to DNAC and join client with burned-in MAC | Passed | |

REVIEW DRAFT - CISCO CONFIDENTIAL

| | | | | |
|-----------------|---|---|--------|--|
| DNACJ223S_MR_03 | Join client with RCM in EWLC and verify denial reason in assurance | To Join client with RCM in EWLC and verify denial reason in assurance | Passed | |
| DNACJ223S_MR_04 | Join client with RCM in EWC and verify denial reason in assurance | To join client with RCM in EWC and verify denial reason in assurance | Passed | |
| DNACJ223S_MR_05 | Provision EWC to DNAC and join client with RCM | To Provision EWC to DNAC and join client with RCM | Passed | |
| DNACJ223S_MR_06 | Verify Random MAC in Client Health | To Verify Random MAC in Client Health | Passed | |
| DNACJ223S_MR_07 | Roaming across AP's same ewlc | To Roaming across AP's same ewlc | Passed | |
| DNACJ223S_MR_08 | Roaming across WLC with same mobility domain | To Roaming across WLC with same mobility domain | Passed | |
| DNACJ223S_MR_09 | Associating Window client without deny RCM enabled L3-Web auth SSID & Web login with guest user | To check that Window 10 client got associated without deny RCM enabled L3-Web auth SSID & Login with guest user credentials | Passed | |
| DNACJ223S_MR_10 | Using Hotspot Portal to Instruct Users on Disabling MAC Address Randomization | To Use Hotspot Portal to Instruct Users on Disabling MAC Address Randomization | Passed | |

AP RMA 2.0

| Logical ID | Title | Description | Status | Defect ID |
|-----------------|---|---|--------|------------|
| DNACJ223S_RMA_1 | Checking A AP which was marked to replace an existing AP cannot be used for another faulty device | To Verify the AP which was marked to replace an existing AP cannot be used for another faulty device or not | Failed | CSCvy74664 |

REVIEW DRAFT - CISCO CONFIDENTIAL

| | | | | |
|------------------|---|--|--------|--|
| DNACJ223S_RMA_2 | Verify the client association after AP RMA process | To Verify the client associate or not after RMA process | Passed | |
| DNACJ223S_RMA_3 | Selecting the candidate for New AP whether it is already provisioned and assign to the site | To verify An AP if already provisioned or added to SITE, Wont be allowed as candidate for new AP | Passed | |
| DNACJ223S_RMA_4 | Selecting the new AP for Marked as replacement | To verify AP marked as replcement cant be allowd to be marked as a new AP | Passed | |
| DNACJ223S_RMA_5 | Selecting the replacement AP for for new AP | To verify able to select replacement ap for new AP or not | Passed | |
| DNACJ223S_RMA_6 | Choosing same model AP & PID as new AP | To verify Choice of new AP model is restricted to same model and PID must be exact match | Passed | |
| DNACJ223S_RMA_7 | Deleting the marked AP from the inventory after RMA process | To verify after RMA process marked AP or deleted or not | Passed | |
| DNACJ223S_RMA_8 | Un-Configuring the old AP config while processing AP replacement | To verify DNAC must unconfigure old APs config in case of movement of APs instead of replacement | Passed | |
| DNACJ223S_RMA_9 | Selecting the candidate for New AP from same controller | To verify the AP should selected in same controller | Passed | |
| DNACJ223S_RMA_10 | Selecting the candidate for New AP from different controller | To verify the AP should not selected in different controller | Passed | |

REVIEW DRAFT - CISCO CONFIDENTIAL

| | | | | |
|------------------|---|--|--------|--|
| DNACJ223S_RMA_11 | Verifying the all model AP would be configure marked for replacement option | To Verify Mark replacement works fine for all model APs and the same reflects correctly under the marked for replacement tab | Passed | |
| DNACJ223S_RMA_12 | Performing multiple RMA process for same AP | To verify Multiple RMA for same AP model must not be allowed | Passed | |
| DNACJ223S_RMA_13 | Un Marking the replacement AP from Marked for replacement tab | To verify Unmark for replacement must remove the device from Marked for replacement tab | Passed | |
| DNACJ223S_RMA_14 | Validating the ip address in new AP after RMA process | To verify the ip address after RMA process | Passed | |
| DNACJ223S_RMA_15 | Associate the client with new AP after RMA process | To verify the client associate or not after the RMA process | Passed | |
| DNACJ223S_RMA_16 | Verify the RMA process with PnP flow | To verify the RMA process in PnP flow | Passed | |
| DNACJ223S_RMA_17 | Verifying the credentials are same RMA process and before claim process | To verify the credential after RMA process | Passed | |
| DNACJ223S_RMA_18 | Choosing the shedule for later replacement option for RMA process | To verify AP RMA process with schedule for later option | Passed | |

Rogue

| Logical ID | Title | Description | Status | Defect ID |
|--------------------|---|--|--------|-----------|
| DNACJ223S_Rogue_01 | Download and install Rogue management in DNAC | To download and install Rogue management in DNAC | Passed | |
| DNACJ223S_Rogue_02 | Enabling Rogue management | To enable rogue management | Passed | |

REVIEW DRAFT - CISCO CONFIDENTIAL

| | | | | |
|--------------------|---|--|--------|------------|
| DNACJ223S_Rogue_03 | Monitor the threats detected under the Rogue management dashboard | To monitor the threats detected under the Rogue management dashboard | Passed | |
| DNACJ223S_Rogue_04 | Check status of devices added after rogue config job is enabled | To check status of devices added after rogue config job is enabled | Passed | |
| DNACJ223S_Rogue_05 | Check status of existing and devices added after rogue config job is disabled | To check status of existing and devices added after rogue config job is disabled | Passed | |
| DNACJ223S_Rogue_06 | Edit time range and verify details in dashboard | Edit time range and verify details in dashboard | Passed | |
| DNACJ223S_Rogue_07 | Using show map option in dashboard | To check show map option in Rogue dashboard. | Passed | |
| DNACJ223S_Rogue_08 | Refresh dashboard to check if details are updated | To refresh dashboard and check if details are updated | Passed | |
| DNACJ223S_Rogue_09 | Filter threats and customize fields in rogue dashboard. | To filter threats and customize fields in rogue dashboard. | Passed | CSCvy48363 |
| DNACJ223S_Rogue_10 | Check threat 360 page details. | To check threat 360 page details. | Passed | |
| DNACJ223S_Rogue_11 | Export devices and client in threat 360 page | To export devices and client in threat 360 page | Failed | CSCvz08066 |

Called Station ID

| Logical ID | Title | Description | Status | Defect ID |
|------------------|--|---|--------|-----------|
| DNACJ176_2_CS_01 | Configure radius-server wireless attribute call station id for authentication and accounting with "ap-name-ssid" | To Configure radius-server wireless attribute call station id for authentication and accounting with "ap-name-ssid" | Passed | |

REVIEW DRAFT - CISCO CONFIDENTIAL

| | | | | |
|------------------|--|---|--------|------------|
| DNACJ176_2_CS_02 | Configure radius-server wireless attribute call station id for authentication and accounting with "ap-ethmac-ssid" | To Configure radius-server wireless attribute call station id for authentication and accounting with "ap-ethmac-ssid" | Passed | |
| DNACJ176_2_CS_03 | Configure radius-server wireless attribute call station id for authentication and accounting with "ap-group-name" | To Configure radius-server wireless attribute call station id for authentication and accounting with "ap-group-name" | Passed | |
| DNACJ176_2_CS_04 | Configure radius-server wireless attribute call station id for authentication and accounting with "ap-macaddress-ssid" | To Configure radius-server wireless attribute call station id for authentication and accounting with "ap-macaddress-ssid" | Passed | |
| DNACJ176_2_CS_05 | Configure radius-server wireless attribute call station id for authentication and accounting with "ap-macaddress" | To Configure radius-server wireless attribute call station id for authentication and accounting with "ap-macaddress" | Failed | CSCvy88030 |
| DNACJ176_2_CS_06 | Configure radius-server wireless attribute call station id for authentication and accounting with "ap-ethmac-only" | To Configure radius-server wireless attribute call station id for authentication and accounting with "ap-ethmac-only" | Passed | |
| DNACJ176_2_CS_07 | Configure radius-server wireless attribute call station id for authentication and accounting with "ap-location" | To Configure radius-server wireless attribute call station id for authentication and accounting with "ap-location" | Passed | |

REVIEW DRAFT - CISCO CONFIDENTIAL

| | | | | |
|------------------|--|---|--------|------------|
| DNACJ176_2_CS_08 | Configure radius-server wireless attribute call station id for authentication and accounting with "ap-name-ssid" with different networks | To Configure radius-server wireless attribute call station id for authentication and accounting with "ap-name-ssid" with different networks | Passed | CSCvy88180 |
| DNACJ176_2_CS_09 | configure different servers for authentication and accounting of attribute | To configure different servers for authentication and accounting of attribute | Passed | |
| DNACJ176_2_CS_10 | configuring both AAA and local authentication | To configuring both AAA and local authentication | Passed | |
| DNACJ176_2_CS_11 | Verify Downgrade and upgrade impacted while configuring called station id for authentication and accounting | To verify Downgrade and upgrade impacted while configuring called station id for authentication and accounting | Passed | |
| DNACJ176_2_CS_12 | Verify HA active to stanby config impacts when configuring called station id for authentication and accounting | To verify config impact HA active to stanby when configuring called station id for authentication and accounting | Passed | |
| DNACJ176_2_CS_13 | Verify active to stanby to active config impact when configuring called station id for authentication and accounting | To verify config impact when active to stanby to active when configuring called station id for authentication and accounting | Passed | |
| DNACJ176_2_CS_14 | Verify by changing mac address format in attribute and check config impact "radius-server attribute 31 mac format ? " | To Verify the changing of mac address format in attribute and check config | Passed | |

REVIEW DRAFT - CISCO CONFIDENTIAL

| | | | | |
|------------------|---|--|--------|------------|
| DNACJ176_2_CS_15 | Configure radius-server wireless attribute call station id for authentication and accounting with “ap-name-ssid”with mac filtering configured in AAA | To Configure mac filtering and verify client connectivity | Passed | CSCvz02357 |
| DNACJ176_2_CS_16 | Verify Editing changes are applying while configuring radius-server wireless attribute call station id for authentication and accounting with “ap-name”with mac filtering configured in AAA | To Verify Editing changes are applying while configuring radius-server wireless attribute call station id for authentication and accounting with “ap-name” | Passed | |
| DNACJ176_2_CS_17 | Configure radius-server wireless attribute call station id for authentication and accounting with “ap-name-ssid”with Mobility configuration | Configure radius-server wireless attribute call station id for authentication and accounting with “ap-name-ssid”with Mobility configuration | Passed | |

Mesh AP Support

| Logical ID | Title | Description | Status | Defect ID |
|-------------------|---|--|--------|------------|
| DNACJ223S_Mesh_01 | Configuring Mesh and provisioning the AP | To configure Mesh and provisioning the AP | Failed | CSCvy44457 |
| DNACJ223S_Mesh_02 | Monitor the AP parameters on Mesh operation | To monitor the AP parameters on Mesh operation | Passed | |
| DNACJ223S_Mesh_03 | Configuring Mesh setup from DNAC and verifying the same in eWLC | To configure mesh setup from DNAC and check if the configuration are pushedto eWLC | Passed | |

REVIEW DRAFT - CISCO CONFIDENTIAL

| | | | | |
|-------------------|--|--|--------|----------------------|
| DNACJ223S_Mesh_04 | Configuring Mesh setup in 9115 AP from DNAC and verifying the same in eWLC | To configure mesh setup in 9115 AP from DNAC and check if the configuration are pushed to eWLC | Failed | CSCvy88094CSCvz08188 |
| DNACJ223S_Mesh_05 | Configuring Mesh setup in 9120 AP from DNAC and verifying the same in eWLC | To configure mesh setup in 9120 AP from DNAC and check if the configuration are pushed to eWLC | Passed | |
| DNACJ223S_Mesh_06 | Configuring Mesh setup in 9130 AP from DNAC and verifying the same in eWLC | To configure mesh setup in 9130 AP from DNAC and check if the configuration are pushed to eWLC | Passed | |
| DNACJ223S_Mesh_07 | Configuring Mesh setup in 2800 AP from DNAC and verifying the same in eWLC | To configure mesh setup in 2800 AP from DNAC and check if the configuration are pushed to eWLC | Passed | |
| DNACJ223S_Mesh_08 | Check if the Mesh settings from DNAC is pushed into eWLC 9800-40 or not | To verify if the mesh setting done in AP from DNAC is pushed to eWLC 9800-40 or not and check all the configuration pushed from DNAC | Passed | |
| DNACJ223S_Mesh_09 | Check if the Mesh settings from DNAC is pushed into eWLC 9800-80 or not | To verify if the mesh setting done in AP from DNAC is pushed to eWLC 9800-80 or not and check all the configuration pushed from DNAC | Passed | |
| DNACJ223S_Mesh_10 | Check if the Mesh settings from DNAC is pushed into eWLC 9800-L or not | To verify if the mesh setting done in AP from DNAC is pushed to eWLC 9800-L or not and check all the configuration pushed from DNAC | Passed | |

REVIEW DRAFT - CISCO CONFIDENTIAL

| | | | | |
|-------------------|---|---|--------|--|
| DNACJ223S_Mesh_11 | Check if the Mesh settings from DNAC is pushed into eWLC 9800-CL or not | To verify if the mesh setting done in AP from DNAC is pushed to eWLC 9800-CL or not and check all the configuration pushed from DNAC | Passed | |
| DNACJ223S_Mesh_12 | Connecting a Window client to the Mesh AP which is configured from DNAC | To connect a Window client to the Mesh AP which is configured from DNAC and check the behaviour and also check the AP details | Passed | |
| DNACJ223S_Mesh_13 | Connecting a Window Surface client to the Mesh AP which is configured from DNAC | To connect a Window surface client to the Mesh AP which is configured from DNAC and check the behaviour and also check the AP details | Passed | |
| DNACJ223S_Mesh_14 | Connecting a Android client to the Mesh AP which is configured from DNAC | To connect a Android client to the Mesh AP which is configured from DNAC and check the behaviour and also check the AP details | Passed | |
| DNACJ223S_Mesh_15 | Connecting a IOS client to the Mesh AP which is configured from DNAC | To connect a IOS client to the Mesh AP which is configured from DNAC and check the behaviour and also check the AP details | Passed | |

REVIEW DRAFT - CISCO CONFIDENTIAL

| | | | | |
|-------------------|--|--|--------|--|
| DNACJ223S_Mesh_16 | Connecting a MacOS client to the Mesh AP which is configured from DNAC | To connect a MacOS client to the Mesh AP which is configured from DNAC and check the behaviour and also check the AP details | Passed | |
|-------------------|--|--|--------|--|

Guest Anchor

| Logical ID | Title | Description | Status | Defect ID |
|-------------------|--|---|--------|------------|
| DNACJ223S_Guest_1 | Configuring Guest Anchor in eWLC | To verify if the Guest Anchor Can be configured in eWLC | Passed | |
| DNACJ223S_Guest_2 | Checking the Mobility configuration in DNAC | To verify whether the mobility configurations are showing or not in DNAC | Passed | |
| DNACJ223S_Guest_3 | Configuring Guest Anchor in DNAC with WPA 2 Security and connecting a client | To configure Guest Anchor and connecting a client to WPA 2 PSK security also check the behaviour of the client when roaming from foreign to Anchor controller | Passed | |
| DNACJ223S_Guest_4 | Configuring Guest Anchor in DNAC with WPA 2 dot 1 X Security and connecting a client | To configure Guest Anchor and connecting a client to WPA 2 Dot1x security also check the behaviour of the client when roaming from foreign to Anchor controller | Passed | CSCvy68210 |

REVIEW DRAFT - CISCO CONFIDENTIAL

| | | | | |
|--------------------|---|--|--------|--|
| DNACJ223S_Guest_5 | Configuring Guest Anchor in DNAC with WPA 3 PSK Security and connecting a client | To configure Guest Anchor and connecting a client to WPA 3 PSK security also check the behaviour of the client when roaming from foreign to Anchor controller | Passed | |
| DNACJ223S_Guest_6 | Configuring Guest Anchor in DNAC with WPA 3 dot1x Security and connecting a client | To configure Guest Anchor and connecting a client to WPA 3 dot1x security also check the behaviour of the client when roaming from foreign to Anchor controller | Passed | |
| DNACJ223S_Guest_7 | Configuring Guest Anchor in DNAC with Open secured Security and connecting a client | To configure Guest Anchor and connecting a client to Open secured security also check the behaviour of the client when roaming from foreign to Anchor controller | Passed | |
| DNACJ223S_Guest_8 | Configuring Guest Anchor in DNAC with Open Security and connecting a client | To configure Guest Anchor and connecting a client to Open security also check the behaviour of the client when roaming from foreign to Anchor controller | Passed | |
| DNACJ223S_Guest_9 | Configuring Guest Anchor in DNAC enabling FT and connecting a client | To configure Guest Anchor with FT enabled connecting a client t also check the behaviour of the client when roaming from foreign to Anchor controller | Passed | |
| DNACJ223S_Guest_10 | Enabling MFP and configuring Guest Anchor to connect a client | To enable MFP and configuring Guest Anchor to connect a client | Passed | |

REVIEW DRAFT - CISCO CONFIDENTIAL

| | | | | |
|--------------------|--|---|--------|--|
| DNACJ223S_Guest_11 | Validating the Guest Anchor using different combination of eWLC as foreign and Anchor | To Validate the guest anchor with two different combination of eWLC and check if the clients gets connected and traffic is passed from Foreign to Anchor or not | Passed | |
| DNACJ223S_Guest_12 | Validating the Guest Anchor using same model of eWLC as foreign and Anchor | To Validate the guest anchor with same combination of eWLC and check if the clients gets connected and traffic is passed from Foreign to Anchor or not | Passed | |
| DNACJ223S_Guest_13 | Connecting a Window client through Guest Anchor configured from DNAC with WPA 3 PSK Security and | To connecting a Window client through Guest Anchor configured from DNAC with WPA 3 PSK Security and | Passed | |
| DNACJ223S_Guest_14 | Connecting a MS Surface client through Guest Anchor configured from DNAC with WPA 3 PSK Security and | To connecting a MS Surface client through Guest Anchor configured from DNAC with WPA 3 PSK Security and | Passed | |
| DNACJ223S_Guest_15 | Connecting a Android client through Guest Anchor configured from DNAC with WPA 3 PSK Security and | To connecting a Android client through Guest Anchor configured from DNAC with WPA 3 PSK Security and | Passed | |
| DNACJ223S_Guest_16 | Connecting a Iphone client through Guest Anchor configured from DNAC with WPA 3 PSK Security and | To connecting a Iphone client through Guest Anchor configured from DNAC with WPA 3 PSK Security and | Passed | |

REVIEW DRAFT - CISCO CONFIDENTIAL

| | | | | |
|--------------------|--|---|--------|--|
| DNACJ223S_Guest_17 | Connecting a MAC OS client through Guest Anchor configured from DNAC with WPA 3 PSK Security and | To connecting a MAC OS client through Guest Anchor configured from DNAC with WPA 3 PSK Security and | Passed | |
|--------------------|--|---|--------|--|

3D MAP Support

| Logical ID | Title | Description | Status | Defect ID |
|-----------------|--|--|--------|-----------|
| DNACJ223S_3D_01 | Heatmap must incorporate effect of AP location, txPower, elevation and azimuth | Verify if changes reflected or not | Passed | |
| DNACJ223S_3D_02 | User can select multiple APs and see the cumulative coverage of these Aps | Verify if changes reflected or not | Passed | |
| DNACJ223S_3D_03 | Support multiple radios per AP on the same band | Verify if changes reflected or not | Passed | |
| DNACJ223S_3D_04 | Heatmap must incorporate antenna propagation pattern | Verify if changes reflected or not | Passed | |
| DNACJ223S_3D_05 | UI control for channels and channel display | Verify if changes reflected or not | Passed | |
| DNACJ223S_3D_06 | change the AP type | Verify if we can change the AP type | Passed | |
| DNACJ223S_3D_07 | Ability to control AP position & height | Verify if we can move the AP position on the 3d Floor map and modify its height as well and as well in 2d mode | Passed | |
| DNACJ223S_3D_08 | Floor level RF model selection granularity | Verify if we are able to get floor level RF model in case of multi floor building | Passed | |

REVIEW DRAFT - CISCO CONFIDENTIAL

| | | | | |
|-----------------|--|--|--------|--|
| DNACJ223S_3D_09 | Ability to control AP Tx Power level & Channel | Verify if we change the TX power and channel, we can see it on the 3d floor map | Passed | |
| DNACJ223S_3D_10 | Ability to control external antenna type | Verify if we can select the type of external antenna - omni directional, bi-directional, etc | Passed | |
| DNACJ223S_3D_11 | Ability to control the camera in first person mode (fly controls) | Verify if ability is there to get regular FOV and a wide angle FOV | Passed | |
| DNACJ223S_3D_12 | Clip plane default position must align with building's bounding box | Verify if default position is aligned with buildings bounding box | Passed | |
| DNACJ223S_3D_13 | Ability to control the camera such that it orbits around a target (orbit controls) | Verify if we can control camera around a target | Passed | |
| DNACJ223S_3D_14 | Support near/far clip planes in 3 dimensions for point cloud and isosurface visualizations | verify support is available for near/far clip plans in 3D | Passed | |
| DNACJ223S_3D_15 | Ability to save custom view settings | Verify if we can save customer view settings and retrieve them | Passed | |
| DNACJ223S_3D_16 | Ability to control the SLA target for Signal Strength (default: TBD) and SNR (default:TBD) | Verify SLA control knob for RSSI & SNR | Passed | |
| DNACJ223S_3D_17 | Insight on coverage gaps (substantiated by sensor ray visualization) | Verify coverage gaps from Sensor(ray visualization) | Passed | |
| DNACJ223S_3D_18 | Insights Infra: Ability to hyperlink insight into chase camera view of 3D visualization | Verify hyperlink of insight to chase camera(3D) | Passed | |

REVIEW DRAFT - CISCO CONFIDENTIAL

| | | | | |
|-----------------|---|--|--------|--|
| DNACJ223S_3D_19 | 3D floor data can be entered directly into DNAC using the Maps wall/obstacle drawing function | Verify manual 3D floor data can be entered & saved | Passed | |
| DNACJ223S_3D_20 | 3D Rendering of Building Geometry with multi-floor and single floor view support | Verify rendering of building geometry (single,multi) | Passed | |

Bulk AP Name Change

| Logical ID | Title | Description | Status | Defect ID |
|-------------------|--|-------------------------------|--------|------------|
| DNACJ223S_Bulk_01 | Bulk AP Name Change -Manual | To verify name changed or not | Passed | CSCvy85731 |
| DNACJ223S_Bulk_02 | Bulk AP Name Change -Create Naming Convention | To verify name changed or not | Passed | CSCvy88133 |
| DNACJ223S_Bulk_03 | Bulk AP Name Change -Edit Naming Convention | To verify name changed or not | Passed | |
| DNACJ223S_Bulk_04 | Bulk AP Name Change -Upload CSV file Naming Convention | To verify name changed or not | Passed | |
| DNACJ223S_Bulk_05 | Bulk AP Name Change -error shown for space/? characters during CSV upload for New AP Names | To verify name changed or not | Passed | |
| DNACJ223S_Bulk_06 | Bulk AP Name Change -Upload CSV file Naming Convention-Unsupported format | To verify name changed or not | Passed | |
| DNACJ223S_Bulk_07 | Bulk AP Name Change -Upload CSV file Naming Convention-Max No Of 18k AP and Naming pattern | To verify name changed or not | Passed | |

REVIEW DRAFT - CISCO CONFIDENTIAL

| | | | | |
|-------------------|---|-------------------------------|--------|------------|
| DNACJ223S_Bulk_08 | Bulk AP Name Change -check on Inventory Page | To verify name changed or not | Passed | |
| DNACJ223S_Bulk_09 | Bulk AP Name Change -check on Provision Page | To verify name changed or not | Passed | |
| DNACJ223S_Bulk_10 | Bulk AP Name Change -check on Maps Page | To verify name changed or not | Passed | |
| DNACJ223S_Bulk_11 | Bulk AP Name Change -check on Assurance | To verify name changed or not | Passed | |
| DNACJ223S_Bulk_12 | Bulk AP Name Change -check on Reports | To verify name changed or not | Passed | CSCvy88199 |
| DNACJ223S_Bulk_13 | Bulk AP Name Change along with AP configurations | To verify name changed or not | Passed | |
| DNACJ223S_Bulk_14 | backup and restore scenario | To verify name changed or not | Passed | |
| DNACJ223S_Bulk_15 | Upgrade DNAC with Bulk AP name change | To verify name changed or not | Passed | |
| DNACJ223S_Bulk_16 | validate Audit log ---task name of AP work flow | To verify name changed or not | Passed | |
| DNACJ223S_Bulk_17 | RBAC: Bulk AP name change | To verify name changed or not | Passed | |
| DNACJ223S_Bulk_18 | validate Unknown AP in csv file | To verify name changed or not | Passed | |
| DNACJ223S_Bulk_19 | validate Import AP in maps page and validate in work flow | To verify name changed or not | Passed | |
| DNACJ223S_Bulk_20 | validate Roll back of configuration if partial configuration failed during AP work flow | To verify name changed or not | Passed | |
| DNACJ223S_Bulk_21 | Validate Synch and bulk ap name –can be performed parallely scenario without any impact | To verify name changed or not | Passed | |

REVIEW DRAFT - CISCO CONFIDENTIAL

| | | | | |
|-------------------|---|-------------------------------|--------|--|
| DNACJ223S_Bulk_22 | Unreachable AP on controller –dnac provision to Same AP with reachable scenario | To verify name changed or not | Passed | |
| DNACJ223S_Bulk_23 | validate 3-Node HA scenario | To verify name changed or not | Passed | |
| DNACJ223S_Bulk_24 | validate AP replacement with same AP Name and provision with AP work flow | To verify name changed or not | Passed | |
| DNACJ223S_Bulk_25 | Validate with new AP models,out door/OEAP models with ewlc/Aireos/ME /EWC platforms | To verify name changed or not | Passed | |



CHAPTER 4

Regression Features

- [Overall and Network Health Dashboard, on page 39](#)
- [Mesh Configuration support from DNA Center, on page 42](#)
- [Client 360, on page 45](#)
- [Health Analytics, on page 47](#)
- [Network Device, on page 48](#)
- [Endpoints 360, on page 50](#)
- [C9105 EWC/AP Support, on page 52](#)
- [SWIM, on page 53](#)
- [PnP, on page 54](#)
- [Mobility configuration, on page 56](#)
- [DNA Space Integration, on page 57](#)
- [RSSI and SNR in ASSOC request, on page 58](#)
- [New AP Support\(ICAP\), on page 60](#)
- [Assurance workflow changes to support Device RMA, on page 62](#)
- [Assurance workflow changes to support AP Refresh, on page 63](#)
- [Smart Licencing, on page 64](#)
- [All Data Report - Inventory and SWIM, on page 65](#)
- [RRM assurance for granular reasons for power and channel change, on page 67](#)
- [Assurance: Client 360 Usage Events, on page 69](#)
- [Config Wireless, on page 70](#)

Overall and Network Health Dashboard

| Logical id | Title | Description | Status | Defect ID |
|-----------------|--------------------------------|--|--------|-----------|
| DNACJ223S_Reg_1 | Adding network devices in DNAC | To add network devices like switches, Controllers to DNAC and check if the network devices gets added to DNAC or not | Passed | |

REVIEW DRAFT - CISCO CONFIDENTIAL

| | | | | |
|-----------------|--|---|--------|------------|
| DNACJ223S_Reg_2 | Check if the added device is shown in the overall health dashboard | To check if the Network device added in DNAC is shown in the overall health dashboard | Failed | CSCvy50861 |
| DNACJ223S_Reg_3 | Connecting a Windows clients to a WLAN and check if the client health ,Active clients detail is shown in the wireless Clients dashlet | To connect a Window clients to the wlan created and check if the clients health is shown in the wireless client summary | Passed | CSCvy26450 |
| DNACJ223S_Reg_4 | Connecting a Android clients to a WLAN and check if the client health ,Active clients detail is shown in the wireless Clients dashlet | To connect a Android clients to the wlan created and check if the clients health is shown in the wireless client summary | Failed | CSCvz11939 |
| DNACJ223S_Reg_5 | Connecting a IOS clients to a WLAN and check if the client health ,Active clients detail is shown in the wireless Clients dashlet | To connect a IOS clients to the wlan created and check if the clients health is shown in the wireless client summary | Passed | |
| DNACJ223S_Reg_6 | Connecting a Mac OS clients to a WLAN and check if the client health ,Active clients detail is shown in the wireless Clients dashlet | To connect a Mac OS clients to the wlan created and check if the clients health is shown in the wireless client summary | Passed | |
| DNACJ223S_Reg_7 | Connecting a clients to a WLAN with WPA + WPA2 Security and check if the client health ,Active clients detail is shown in the wireless Clients dashlet | To connect a clients to the wlan with WPA + WPA2 security and check if the clients health is shown in the wireless client summary | Failed | CSCvy26087 |

REVIEW DRAFT - CISCO CONFIDENTIAL

| | | | | |
|------------------|---|---|--------|--|
| DNACJ223S_Reg_8 | Connecting a clients to a WLAN with WPA2 + WPA3 Security and check if the client health ,Active clients detail is shown in the wireless Clients dashlet | To connect a clients to the wlan with WPA + WPA2 security and check if the clients health is shown in the wireless client summary | Passed | |
| DNACJ223S_Reg_9 | Connecting a clients to a WLAN with Static WEP Security and check if the client health ,Active clients detail is shown in the wireless Clients dashlet | To connect a clients to the wlan with Static WEP security and check if the clients health is shown in the wireless client summary | Passed | |
| DNACJ223S_Reg_10 | Connecting a Wired client to a RLAN and check if the client health is shown in the wired Clients dashlet | To connect a clients to the rlan created and check if the clients health is shown in the wired client summary | Passed | |
| DNACJ223S_Reg_11 | Check the issue shown in the Top 10 issue types | To check if the issue shown in the top 10 issue type dashlet | Passed | |
| DNACJ223S_Reg_12 | Resolving the issue shown and checking the resolved list | To check if the issue shown in the top 10 issue type dashlet are resolved and the resolved issue are show in resolved list or not | Passed | |
| DNACJ223S_Reg_13 | Check if the added network device is shown in the Network Health page | To check if the Network device added in DNAC is shown in the Network health dashboard | Passed | |
| DNACJ223S_Reg_14 | Validating the graphs shown for the network devices | To validate the if the graphs shown in the network health pages are correct | Passed | |

REVIEW DRAFT - CISCO CONFIDENTIAL

| | | | | |
|------------------|---|--|--------|--|
| DNACJ223S_Reg_15 | Checking the total APs count in the network device page in Total AP count dashlet | To check the total APs count in the network health page which is added in eWLC and check if the AP count are shown correctly | Passed | |
| DNACJ223S_Reg_16 | Checking the Top N APs count in the network device page in Assurance page | To check the Top N APs count in the network health page which in added in eWLC and check if the AP count are shown correctly | Passed | |
| DNACJ223S_Reg_17 | Validating the Top N APs by High Interference in network device in Assurance page | To validate the Top N APs by high interference in the network health page which is added in eWLC and check if the AP count are shown correctly | Passed | |
| DNACJ223S_Reg_18 | Making a eWLC down to check if the Dashboard are updated or not | To make the eWLC down and check if the dashboards in network health are updated accordingly | Passed | |
| DNACJ223S_Reg_19 | Deleting the eWLC with AP and the dashboards | To delete the eWLC with multiples AP and check if the dashboards are updated | Passed | |

Mesh Configuration support from DNA Center

| Logical id | Title | Description | Status | Defect ID |
|------------------|--|---|--------|-----------|
| DNACJ223S_Reg_20 | Configuring mesh on eWLC | To check whether the Mesh configurations are configuring in eWLC. | Passed | |
| DNACJ223S_Reg_21 | Check the Joining of in to eWLC with Mesh /Bridge Mode | To check the Mesh/Bridge support of AP after joining in to eWLC | Passed | |

REVIEW DRAFT - CISCO CONFIDENTIAL

| | | | | |
|------------------|--|--|--------|--|
| DNACJ223S_Reg_22 | Configuring Mesh setup from DNAC and verifying the same in eWLC | To configure mesh setup from DNAC and check if the configuration are pushed to eWLC | Passed | |
| DNACJ223S_Reg_23 | Configuring Mesh setup in 9115 AP from DNAC and verifying the same in eWLC | To configure mesh setup in 9115 AP from DNAC and check if the configuration are pushed to eWLC | Passed | |
| DNACJ223S_Reg_24 | Configuring Mesh setup in 9120 AP from DNAC and verifying the same in eWLC | To configure mesh setup in 9120 AP from DNAC and check if the configuration are pushed to eWLC | Passed | |
| DNACJ223S_Reg_25 | Configuring Mesh setup in 9130 AP from DNAC and verifying the same in eWLC | To configure mesh setup in 9130 AP from DNAC and check if the configuration are pushed to eWLC | Passed | |
| DNACJ223S_Reg_26 | Configuring Mesh setup in 2800 AP from DNAC and verifying the same in eWLC | To configure mesh setup in 2800 AP from DNAC and check if the configuration are pushed to eWLC | Passed | |
| DNACJ223S_Reg_27 | Check if the Mesh settings from DNAC is pushed into eWLC 9800-40 or not | To verify if the mesh setting done in AP from DNAC is pushed to eWLC 9800-40 or not and check all the configuration pushed from DNAC | Passed | |
| DNACJ223S_Reg_28 | Check if the Mesh settings from DNAC is pushed into eWLC 9800-80 or not | To verify if the mesh setting done in AP from DNAC is pushed to eWLC 9800-80 or not and check all the configuration pushed from DNAC | Passed | |

REVIEW DRAFT - CISCO CONFIDENTIAL

| | | | | |
|------------------|---|---|--------|--|
| DNACJ223S_Reg_29 | Check if the Mesh settings from DNAC is pushed into eWLC 9800-L or not | To verify if the mesh setting done in AP from DNAC is pushed to eWLC 9800-L or not and check all the configuration pushed from DNAC | Passed | |
| DNACJ223S_Reg_30 | Check if the Mesh settings from DNAC is pushed into eWLC 9800-CL or not | To verify if the mesh setting done in AP from DNAC is pushed to eWLC 9800-CL or not and check all the configuration pushed from DNAC | Passed | |
| DNACJ223S_Reg_31 | Connecting a Window client to the Mesh AP which is configured from DNAC | To connect a Window client to the Mesh AP which is configured from DNAC and check the behaviour and also check the AP details | Passed | |
| DNACJ223S_Reg_32 | Connecting a Window Surface client to the Mesh AP which is configured from DNAC | To connect a Window surface client to the Mesh AP which is configured from DNAC and check the behaviour and also check the AP details | Passed | |
| DNACJ223S_Reg_33 | Connecting a Android client to the Mesh AP which is configured from DNAC | To connect a Android client to the Mesh AP which is configured from DNAC and check the behaviour and also check the AP details | Passed | |

REVIEW DRAFT - CISCO CONFIDENTIAL

| | | | | |
|------------------|---|---|--------|--|
| DNACJ223S_Reg_34 | Connecting a IOS client to the Mesh AP which is configured from DNAC | To connect a IOS client to the Mesh AP which is configured from DNAC and check the behaviour and also check the AP details | Passed | |
| DNACJ223S_Reg_35 | Connecting a MAC OS client to the Mesh AP which is configured from DNAC | To connect a Mac OS client to the Mesh AP which is configured from DNAC and check the behaviour and also check the AP details | Passed | |

Client 360

| Logical id | Title | Description | Status | Defect ID |
|------------------|--|--|--------|-----------|
| DNACJ223S_Reg_36 | Validate Client Ipv4 information | To validate Client Ipv4 information | Passed | |
| DNACJ223S_Reg_37 | Validate Client SSID information | To validate Client SSID information | Passed | |
| DNACJ223S_Reg_38 | Verify events are filtering as per given entry | To verify events are filtering as per given entry | Passed | |
| DNACJ223S_Reg_39 | Validate Client Device information | To validate Client Device information | Passed | |
| DNACJ223S_Reg_40 | Validate Client Ipv6 information | To validate Client Ipv6 information | Passed | |
| DNACJ223S_Reg_41 | Connect Windows Client and check all the Information in Client 360 | To connect Windows Client and to check all the Information in Client 360 | Passed | |
| DNACJ223S_Reg_42 | Connect Android Client and check all the Information in Client 360 | To connect Android Client and to check all the Information in Client 360 | Passed | |
| DNACJ223S_Reg_43 | Connect IOS Client and check all the Information in Client 360 | To connect IOS Client and to check all the Information in Client 360 | Passed | |

REVIEW DRAFT - CISCO CONFIDENTIAL

| | | | | |
|------------------|---|--|--------|------------|
| DNACJ223S_Reg_44 | Connect Surface Client and check all the Information in Client 360 | To connect Surface Client and to check all the Information in Client 360 | Passed | |
| DNACJ223S_Reg_45 | Connect MAC Client and check all the Information in Client 360 | To connect MAC Client and to check all the Information in Client 360 | Passed | |
| DNACJ223S_Reg_46 | Verify Tx and Rx Connectivity errors | To verify Tx and Rx Connectivity errors | Failed | CSCvy88342 |
| DNACJ223S_Reg_47 | Verify Data Usage for Client | To verify Data Usage for Client | Passed | CSCvz01704 |
| DNACJ223S_Reg_48 | Validate all the icons in Onboarding | To validate all the icons in Onboarding | Passed | |
| DNACJ223S_Reg_49 | Validate Client OS in DNAC | To validate Client OS in DNAC | Passed | |
| DNACJ223S_Reg_50 | Disconnect the Client intermittently and verify the status in Onboarding and Issues tab | To disconnect the Client intermittently and verify the status in Onboarding and Issues tab | Passed | |
| DNACJ223S_Reg_51 | Connect Wired Client and check all the information in Client 360 | To connect Wired Client and check all the information in Client 360 | Passed | |
| DNACJ223S_Reg_52 | Roam the Client between APs and check all the Information in Client 360 | To roam the Client between APs and check all the Information in Client 360 | Passed | |
| DNACJ223S_Reg_53 | Verify client status in Client 360 page when clients gets connected to 9105 AP | To verify client status in Client 360 page when clients gets connected to 9105 AP | Passed | |
| DNACJ223S_Reg_54 | Verify client status in Client 360 page when clients gets connected to 9115 AP | To verify client status in Client 360 page when clients gets connected to 9115 AP | Passed | CSCvy74441 |
| DNACJ223S_Reg_55 | Verify client status in Client 360 page when clients gets connected to 9120 AP | To verify client status in Client 360 page when clients gets connected to 9120 AP | Passed | CSCvy88332 |

REVIEW DRAFT - CISCO CONFIDENTIAL

| | | | | |
|------------------|---|--|--------|------------|
| DNACJ223S_Reg_56 | Roam the client between controllers and check the status in Client 360 page | to roam the client between controllers and check the status in Client 360 page | Passed | CSCvy88323 |
| DNACJ223S_Reg_57 | Roam the client between APs and check the status in Client 360 page | To roam the client between APs and check the status in Client 360 page | Passed | |
| DNACJ223S_Reg_58 | Verify client deletion status in Client 360 page | To verify client deletion status in Client 360 page | Failed | CSCvy95550 |

Health Analytics

| Logical id | Title | Description | Status | Defect ID |
|------------------|-------------------------------------|---|--------|-----------|
| DNACJ223S_Reg_59 | Health Analytics - RSSI for 9120 AP | To Verify the RSSI values in associating clients which is connected 9120 AP | Passed | |
| DNACJ223S_Reg_60 | Health Analytics - RSSI for 9130 AP | To Verify the RSSI values in associating clients which is connected 9130 AP | Passed | |
| DNACJ223S_Reg_61 | Health Analytics - RSSI for 9115 AP | To Verify the RSSI values in associating clients which is connected 9115 AP | Passed | |
| DNACJ223S_Reg_62 | Health Analytics - RSSI for 9105 AP | To Verify the RSSI values in associating clients which is connected 9105 AP | Passed | |
| DNACJ223S_Reg_63 | Health Analytics - SNR for 9120 AP | To Verify the SNR values in associating clients | Passed | |
| DNACJ223S_Reg_64 | Health Analytics - SNR for 9130 AP | To Verify the SNR values in associating clients | Passed | |
| DNACJ223S_Reg_65 | Health Analytics - SNR for 9115AP | To Verify the SNR values in associating clients | Passed | |
| DNACJ223S_Reg_66 | Health Analytics - SNR for 9105 AP | To Verify the SNR values in associating clients | Passed | |

REVIEW DRAFT - CISCO CONFIDENTIAL

| | | | | |
|------------------|---|---|--------|------------|
| DNACJ223S_Reg_67 | Health Analytics -for Inter Roaming | To Verify the Ap's details by the roaming scenario | Passed | |
| DNACJ223S_Reg_68 | Health Analytics -for Intra Roaming | To Verify the Ap's details by the roaming scenario | Passed | |
| DNACJ223S_Reg_69 | Health Analytics -for IRCM Roaming | To Verify the Ap's details by the roaming scenario | Passed | |
| DNACJ223S_Reg_70 | Health Analytics-Client Count by SSID | To verify the details of client based on SSID | Passed | |
| DNACJ223S_Reg_71 | Health Analytics-Windows Onboarding Times | To verify the client onboard details | Passed | |
| DNACJ223S_Reg_72 | Health Analytics-Android Onboarding Times | To verify the client onboard details | Passed | |
| DNACJ223S_Reg_73 | Health Analytics-mac Onboarding Times | To verify the client onboard details | Passed | |
| DNACJ223S_Reg_74 | Health Analytics - Ap UpDown | To verify the AP's UP or down status | Passed | |
| DNACJ223S_Reg_75 | Health Analytics - Client Count | To verify the client count by Ap's association | Passed | |
| DNACJ223S_Reg_76 | Health Analytics - Device Reachability | To verify the Device status of reachable/unreachble state | Passed | |
| DNACJ223S_Reg_77 | Health Analytics - Ap Interference | To verify the Ap's Interference performance | Failed | CSCvz01408 |
| DNACJ223S_Reg_78 | Genrate the Report for Health Analytics | To verify the details in generated reports. | Passed | |

Network Device

| Logical id | Title | Description | Status | Defect ID |
|------------------|---|--|--------|-----------|
| DNACJ223S_Reg_79 | Verify Network Device dashboard details | To Verify Network Device dashboard details | Passed | |

REVIEW DRAFT - CISCO CONFIDENTIAL

| | | | | |
|------------------|---|--|--------|--|
| DNACJ223S_Reg_80 | Verify if network device details is updated for each device | To verify if network device details is updated for each device | Passed | |
| DNACJ223S_Reg_81 | Verify if AP details is updated for each AP | To verify if AP details is updated for each AP | Passed | |
| DNACJ223S_Reg_82 | Verify if device count is updated with each addition or deletion | To Verify if device count is updated with each addition or deletion | Passed | |
| DNACJ223S_Reg_83 | Verify if different models of network devices are successfully monitored in dashboard | To Verify if different models of network devices are successfully monitored in dashboard | Passed | |
| DNACJ223S_Reg_84 | Verify if different models of AP are successfully monitored in dashboard | To Verify if different models of AP are successfully monitored in dashboard | Passed | |
| DNACJ223S_Reg_85 | Check device statistics over a timeline chart | To check device statistics over a timeline chart | Passed | |
| DNACJ223S_Reg_86 | Check device statistics over different sites | To check device statistics over different sites | Passed | |
| DNACJ223S_Reg_87 | Check device statistics over different domains | To check device statistics over different domains | Passed | |
| DNACJ223S_Reg_88 | Check if the dashboard can be edited and customized | To check if the dashboard can be edited and customized | Passed | |
| DNACJ223S_Reg_89 | Monitor network devices based on device type and health | Monitor network devices based on device type and health | Passed | |
| DNACJ223S_Reg_90 | Verify the AP stats based on different criteria | To verify the AP stats based on different criteria | Passed | |
| DNACJ223S_Reg_91 | Export the device details from network dashboard | To export the device details from network dashboard | Passed | |

REVIEW DRAFT - CISCO CONFIDENTIAL

| | | | | |
|------------------|---|--|--------|--|
| DNACJ223S_Reg_92 | Monitor network device details in Network/Device 360 page | To monitor network device details in Network/Device 360 page | Passed | |
|------------------|---|--|--------|--|

Endpoints 360

| Logical id | Title | Description | Status | Defect ID |
|------------------|--|--|--------|-----------|
| DNACJ223S_Reg_36 | Validate Client Ipv4 information | To validate Client Ipv4 information | Passed | |
| DNACJ223S_Reg_37 | Validate Client SSID information | To validate Client SSID information | Passed | |
| DNACJ223S_Reg_38 | Verify events are filtering as per given entry | To verify events are filtering as per given entry | Passed | |
| DNACJ223S_Reg_39 | Validate Client Device information | To validate Client Device information | Passed | |
| DNACJ223S_Reg_40 | Validate Client Ipv6 information | To validate Client Ipv6 information | Passed | |
| DNACJ223S_Reg_41 | Connect Windows Client and check all the Information in Client 360 | To connect Windows Client and to check all the Information in Client 360 | Passed | |
| DNACJ223S_Reg_42 | Connect Android Client and check all the Information in Client 360 | To connect Android Client and to check all the Information in Client 360 | Passed | |
| DNACJ223S_Reg_43 | Connect IOS Client and check all the Information in Client 360 | To connect IOS Client and to check all the Information in Client 360 | Passed | |
| DNACJ223S_Reg_44 | Connect Surface Client and check all the Information in Client 360 | To connect Surface Client and to check all the Information in Client 360 | Passed | |
| DNACJ223S_Reg_45 | Connect MAC Client and check all the Information in Client 360 | To connect MAC Client and to check all the Information in Client 360 | Passed | |
| DNACJ223S_Reg_46 | Verify Tx and Rx Connectivity errors | To verify Tx and Rx Connectivity errors | Passed | |

REVIEW DRAFT - CISCO CONFIDENTIAL

| | | | | |
|------------------|---|--|--------|--|
| DNACJ223S_Reg_47 | Verify Data Usage for Client | To verify Data Usage for Client | Passed | |
| DNACJ223S_Reg_48 | Validate all the icons in Onboarding | To validate all the icons in Onboarding | Passed | |
| DNACJ223S_Reg_49 | Validate Client OS in DNAC | To validate Client OS in DNAC | Passed | |
| DNACJ223S_Reg_50 | Disconnect the Client intermittently and verify the status in Onboarding and Issues tab | To disconnect the Client intermittently and verify the status in Onboarding and Issues tab | Passed | |
| DNACJ223S_Reg_51 | Connect Wired Client and check all the information in Client 360 | To connect Wired Client and check all the information in Client 360 | Passed | |
| DNACJ223S_Reg_52 | Roam the Client between APs and check all the Information in Client 360 | To roam the Client between APs and check all the Information in Client 360 | Passed | |
| DNACJ223S_Reg_53 | Verify client status in Client 360 page when clients gets connected to 9105 AP | To verify client status in Client 360 page when clients gets connected to 9105 AP | Passed | |
| DNACJ223S_Reg_54 | Verify client status in Client 360 page when clients gets connected to 9115 AP | To verify client status in Client 360 page when clients gets connected to 9115 AP | Passed | |
| DNACJ223S_Reg_55 | Verify client status in Client 360 page when clients gets connected to 9120 AP | To verify client status in Client 360 page when clients gets connected to 9120 AP | Passed | |
| DNACJ223S_Reg_56 | Roam the client between controllers and check the status in Client 360 page | to roam the client between controllers and check the status in Client 360 page | Passed | |
| DNACJ223S_Reg_57 | Roam the client between APs and check the status in Client 360 page | To roam the client between APs and check the status in Client 360 page | Passed | |

REVIEW DRAFT - CISCO CONFIDENTIAL

| | | | | |
|------------------|--|---|--------|--|
| DNACJ223S_Reg_58 | Verify client deletion status in Client 360 page | To verify client deletion status in Client 360 page | Passed | |
|------------------|--|---|--------|--|

C9105 EWC/AP Support

| Logical id | Title | Description | Status | Defect ID |
|-------------------|---|--|--------|------------|
| DNACJ223S_Reg_107 | Verifying C9105 device details in inventory after added/discovered in cisco DNA | To verify whether C9105 device details are showing in inventory after added in cisco DNA | Passed | |
| DNACJ223S_Reg_108 | Monitoring C9105 devices after adding in cisco DNA and verifying same in Ewc | Verifying whether added devices properly assured or monitoring in cisco DNA | Passed | CSCvz10415 |
| DNACJ223S_Reg_109 | Discovering multiple devices in cisco DNA and check for the same count in monitored devices | Checking whether count of wireless devices are added in Cisco DNA and they are monitored properly or not | Passed | |
| DNACJ223S_Reg_110 | Checking C9105 AP device in inventory after Wireless controller discovered in cisco DNA | To verify whether all AP's details showing in inventory after device discovered | Passed | |
| DNACJ223S_Reg_111 | Checking the AP's count in network health after successfully added in inventory | To verify AP's count in Assurance dashboard after added in inventory | Passed | |
| DNACJ223S_Reg_112 | Resync the cisco DNA and checking for the newly added AP's count in device | To verify newly added AP's count in cisco DNA after resync | Passed | |
| DNACJ223S_Reg_113 | Exporting the inventory details from cisco DNA | To verify whether user able to export the device inventory details or not | Passed | |

REVIEW DRAFT - CISCO CONFIDENTIAL

| | | | | |
|-------------------|---|---|--------|--|
| DNACJ223S_Reg_114 | Importing the inventory details to device from computer in cisco DNA | To verify whether user able to import the device inventory details or not | Passed | |
| DNACJ223S_Reg_115 | Running the commands in cisco DNA using command runner | To check the output for device commands after run in command runner in cisco DNA | Passed | |
| DNACJ223S_Reg_116 | Deleting the device from inventory in cisco DNA | To check whether user able to delete the device from inventory or not | Passed | |
| DNACJ223S_Reg_117 | Checking the device reachability status in inventory after make the device down | To check whether reachability status change to "unreachable" or not when device is down | Passed | |
| DNACJ223S_Reg_118 | Adding site and provisioning device | To check whether user able to create site and provision device | Passed | |
| DNACJ223S_Reg_119 | Positioning AP's on site with different radios | To check AP's positioning after positioned with different radios | Passed | |
| DNACJ223S_Reg_120 | Checking for internal AP details after device added discovered | To verify whether EWC device showing as AP or not in inventory | Passed | |
| DNACJ223S_Reg_121 | Connecting the clients to AP's and checking the client count in Dashboard | To verify the client details in client Health after connected to AP | Passed | |
| DNACJ223S_Reg_122 | Provisioning the EWC in day0 via PnP profile and bring device day1 | Verify that user is able to Provisioned the EWC in day0 via PnP profile or not | Passed | |

SWIM

| Logical id | Title | Description | Status | Defect ID |
|------------|-------|-------------|--------|-----------|
|------------|-------|-------------|--------|-----------|

REVIEW DRAFT - CISCO CONFIDENTIAL

| | | | | |
|-------------------|---|--|--------|--|
| DNACJ223S_Reg_123 | Importing a image from a device | To check if the images gets imported from the device or not | Passed | |
| DNACJ223S_Reg_124 | Importing the image through the URL | To import the image using URL and check if the images gets imported or not. | Passed | |
| DNACJ223S_Reg_125 | Import the Invalid image from a device | To import the wrong image using device and check if the images gets imported or not. | Passed | |
| DNACJ223S_Reg_126 | Mark multiple image as golden image and verify which image upgrded with controller. | To Mark multiple image as golden image and validate controler upgrded or not | Passed | |
| DNACJ223S_Reg_127 | Schedule the time for controller upgrade | To Scheduling the time for controller and check the controller upgraded with given time or not | Passed | |
| DNACJ223S_Reg_128 | Sheduling the time as "NOW" to upgrade the controller image | To Scheduling the time as "NOW" for controller and check the controller upgraded or not | Passed | |
| DNACJ223S_Reg_129 | Distributing the image to different devices . | To distribute different images and check if the devices selected | Passed | |
| DNACJ223S_Reg_130 | Associate the client with controller after upgraded | To distribute different images and check if the devices selected | Passed | |
| DNACJ223S_Reg_131 | Generate SWIM report | To generate SWIM report and verify the details correct or not | Passed | |

PnP

| Logical id | Title | Description | Status | Defect ID |
|------------|-------|-------------|--------|-----------|
|------------|-------|-------------|--------|-----------|

REVIEW DRAFT - CISCO CONFIDENTIAL

| | | | | |
|-------------------|--|---|--------|------------|
| DNACJ223S_Reg_132 | View devices from the Plug and Play tab | view devices from the Plug and Play tab | Failed | CSCvy86179 |
| DNACJ223S_Reg_133 | Provision a Switch 9300 with PnP Configuration | Configure 9300 Switch with PNP | Passed | |
| DNACJ223S_Reg_134 | Provision a Switch 9200 L with PnP Configuration | Configure 9200 Switch with PNP | Passed | |
| DNACJ223S_Reg_135 | Provision a Switch 9500 with PnP Configuration | Configure 9500 Switch with PNP | Passed | |
| DNACJ223S_Reg_136 | Provision a Router with PnP Configuration | Configure ISR Router with PNP | Passed | |
| DNACJ223S_Reg_137 | Provision a Legacy router with PnP Configuration | Legacy Configure Router with PNP | Passed | |
| DNACJ223S_Reg_138 | Provision a CSR Router with PnP Configuration | Configure CSR Router with PNP | Passed | |
| DNACJ223S_Reg_139 | Provision a Wireless Controller 9800-40 with PnP Configuration | Configure Wireless Controller with PNP | Passed | |
| DNACJ223S_Reg_140 | Provision a Wireless Controller 9800-80 with PnP Configuration | Configure Wireless Controller with PNP | Passed | |
| DNACJ223S_Reg_141 | Provision a Wireless Controller 9800-L with PnP Configuration | Configure Wireless Controller with PNP | Passed | |
| DNACJ223S_Reg_142 | Automate onboarding Image of a Switch with Plug and Play (PnP) | Load Image to Switch with PnP | Passed | |
| DNACJ223S_Reg_143 | Automate onboarding Image of a Router with Plug and Play (PnP) | Load Image to Router with PnP | Passed | |

REVIEW DRAFT - CISCO CONFIDENTIAL

| | | | | |
|-------------------|--|--|--------|--|
| DNACJ223S_Reg_144 | Automate onboarding Image of a Controller 9800-40 with Plug and Play (PnP) | Load Image to Wireless Controller with PnP | Passed | |
| DNACJ223S_Reg_145 | Automate onboarding Image of a Controller 9800-80 with Plug and Play (PnP) | Load Image to Wireless Controller with PnP | Passed | |
| DNACJ223S_Reg_146 | Automate onboarding Image of a Controller 9800-L with Plug and Play (PnP) | Load Image to Wireless Controller with PnP | Passed | |

Mobility configuration

| Logical id | Title | Description | Status | Defect ID |
|-------------------|--|--|--------|-----------|
| DNACJ223S_Reg_147 | Configuring Mobility configuration in Controller | To verify the mobility configuration in controller | Passed | |
| DNACJ223S_Reg_148 | Checking the Mobility configuration in DNAC | To verify whether the mobility configurations are showing or not in DNAC | Passed | |
| DNACJ223S_Reg_149 | Changing the Mobility group name in controller-1 and check the controller's status in DNAC | To verify whether the controller status in DNAC by changing the mobility group Name. | Passed | |
| DNACJ223S_Reg_150 | Checking the Mobility groups configuration in HA setup | To check the mobility group configurations in DNAC during HA | Passed | |
| DNACJ223S_Reg_151 | Checking the Mobility configuration between lightweight to virtual controller in DNAC | To check whether the mobility happens between lightweight & Virtual controller | Passed | |

REVIEW DRAFT - CISCO CONFIDENTIAL

| | | | | |
|-------------------|--|---|--------|--|
| DNACJ223S_Reg_152 | Checking the mobility configuration between virtual to 9800 controller in DNAC | To check whether the mobility happens between 9800 & Virtual controller | Passed | |
| DNACJ223S_Reg_153 | Verifying the mobility configuration with Different Radio types in DNAC | To verify whether Client is Moving between Controllers with Different Radio type or not | Passed | |
| DNACJ223S_Reg_154 | Verifying the mobility configuration with same Radio types in DNAC | To verify whether Client is Moving between Controllers with same Radio type or not | Passed | |
| DNACJ223S_Reg_155 | Monitoring mobility configuration in DNAC using Android Client | To verify whether the Android client details are showing in DNAC or not | Passed | |
| DNACJ223S_Reg_156 | Monitoring mobility configuration in DNAC using iOS Client | To verify whether the iOS client details are showing in DNAC or not | Passed | |
| DNACJ223S_Reg_157 | Monitoring mobility configuration in DNAC using Windows Client | To verify whether the Windows client details are showing in DNAC or not | Passed | |
| DNACJ223S_Reg_158 | Monitoring mobility configuration in DNAC using Mac Client | To verify whether the Mac client details are showing in DNAC or not | Passed | |
| DNACJ223S_Reg_159 | Add/update/delete mobility peer configuration in DNAC | To check whether the mobility Peer configurations are add/Update/delete in DNAC | Passed | |

DNA Space Integration

| Logical id | Title | Description | Status | Defect ID |
|-------------------|--|---|--------|-----------|
| DNACJ223S_Reg_160 | Adding a space connector to DNA Spaces | To add a space connector to DNA spaces. | Passed | |

REVIEW DRAFT - CISCO CONFIDENTIAL

| | | | | |
|-------------------|--|--|--------|--|
| DNACJ223S_Reg_161 | Register Cisco DNA Spaces cluster with Cisco DNA Spaces. | To Register Cisco DNA Spaces cluster with Cisco DNA Spaces. | Passed | |
| DNACJ223S_Reg_162 | Upgrading the DNA Space connector | To upgrade the DNA space connector and check if the connector is upgraded or not | Passed | |
| DNACJ223S_Reg_163 | Adding Map in DNAC and sync maps with dnas | To Add Map in DNAC and sync maps with dnas | Passed | |
| DNACJ223S_Reg_164 | Add user | Add User to DNAS and verify whether privilege provide are properly accessible | Passed | |
| DNACJ223S_Reg_165 | Delete dnac instance from spaces | To Delete DNAS instance created | Passed | |
| DNACJ223S_Reg_166 | deactivate DNAS from DNAC | To deactivate DNAS from DNAC | Passed | |

RSSI and SNR in ASSOC request

| Logical id | Title | Description | Status | Defect ID |
|-------------------|---|---|--------|-----------|
| DNACJ223S_Reg_167 | Adding eWLC to DNAC and connecting clients | To verify SNR and RSS values in DNA center after connecting client | Passed | |
| DNACJ223S_Reg_168 | Connecting client to AP flex connect mode ,authentication as open and verifying SNR and RSS details | To verify SNR and RSS connectivity in DNAcentre with AP mode flexconnect and authentication as open | Passed | |
| DNACJ223S_Reg_169 | Connecting client to AP flex connect mode ,authentication as PSK and verifying SNR and RSS details | To verify SNR and RSS connectivity in DNAcentre with AP mode flexconnect and authentication as PSK | Passed | |

REVIEW DRAFT - CISCO CONFIDENTIAL

| | | | | |
|-------------------|--|--|--------|--|
| DNACJ223S_Reg_170 | Connecting client to AP flex connect mode ,authentication as dot11 and verifying SNR and RSS details | To verify SNR and RSS connectivity in DNACentre with AP mode flexconnect and authentication as dot11 | Passed | |
| DNACJ223S_Reg_171 | verifying SNR and RSS details after connecting client to AP flex mode as standalone ,authentication as open | To verify SNR and RSS connectivity in DNACentre with AP as Flex standalone and authentication as open | Passed | |
| DNACJ223S_Reg_172 | verifying SNR and RSS details after connecting client to AP flex mode as standalone ,authentication as PSK | To verify SNR and RSS connectivity in DNACentre with AP as Flex standalone and authentication as PSK | Passed | |
| DNACJ223S_Reg_173 | verifying SNR and RSS details after connecting client to AP flex mode as standalone ,authentication as dot11 | To verify SNR and RSS connectivity in DNACentre with AP as Flex standalone and authentication as dot11 | Passed | |
| DNACJ223S_Reg_174 | Connecting client to AP local ,authentication as dot11 and verifying SNR and RSS details | To verify SNR and RSS connectivity in DNACentre with AP mode as local and authentication as dot11 | Passed | |
| DNACJ223S_Reg_175 | Connecting client to AP mode as local verifying SNR and RSS details | To verify SNR and RSS connectivity in DNACentre with AP mode as local | Passed | |
| DNACJ223S_Reg_176 | Connecting client to AP mode as bridge ,authentication as dot11 and verifying SNR and RSS details | To verify SNR and RSS connectivity in DNACentre with AP mode as bridge | Passed | |

REVIEW DRAFT - CISCO CONFIDENTIAL

| | | | | |
|-------------------|---|---|--------|--|
| DNACJ223S_Reg_177 | Checking the SNR and RSS values after performing intra roaming in eWLC | To verify SNR and RSS connectivity in DNACentre after doing intra roaming in WLC | Passed | |
| DNACJ223S_Reg_178 | Roaming client from 9115 & 9120 Aps and checking the SNR and RSS values | To Check the SNR and RSS values when client roam between 3800 & 1815 Aps | Passed | |
| DNACJ223S_Reg_179 | Checking the SNR and RSS values after performing inter roaming in eWLC | To verify SNR and RSS connectivity in DNACentre after doing inter roaming in eWLC | Passed | |
| DNACJ223S_Reg_180 | Checking the SNR and RSS values after performing FT roaming in eWLC | To verify SNR and RSS connectivity in DNACentre after doing FT roaming in eeWLC | Passed | |
| DNACJ223S_Reg_181 | Verifying the AID values in client after connecting client | To check whether client getting AID value or not | Passed | |

New AP Support(ICAP)

| Logical id | Title | Description | Status | Defect ID |
|-------------------|---|--|--------|------------|
| DNACJ223S_Reg_182 | Adding Cataylast AP's in Controller & checking the AP details in DNAC | To check whether cataylast AP's details are showing or not in DNAC | Failed | CSCvy64887 |
| DNACJ223S_Reg_183 | Associating 9130 AP with different country code as with eWLC and cheking the AP details | To associate 9130 AP with different country code and check if the AP does not get joined in DNAC | Passed | |
| DNACJ223S_Reg_184 | Configuring 9115/9120/9130 AP with duplicate IP | To configure AP with a duplicate IP address and check if the AP shows error message or not. | Passed | |

REVIEW DRAFT - CISCO CONFIDENTIAL

| | | | | |
|-------------------|--|--|--------|--|
| DNACJ223S_Reg_185 | Connecting a Windows client to the Catalyst AP | To connect a window client to the AP and check the client connectivity in DNAC | Passed | |
| DNACJ223S_Reg_186 | Connecting a Android client to the Catalyst AP | To connect a Android client to the AP and check the client connectivity in DNAC | Passed | |
| DNACJ223S_Reg_187 | Connecting a IOS client to the catalyst AP | To connect a IOS client to the AP and check the client connectivity in DNAC | Passed | |
| DNACJ223S_Reg_188 | Connecting a MAC client to the catalyst AP | To connect a MAC client to the AP and check the client connectivity in DNAC | Passed | |
| DNACJ223S_Reg_189 | Changing the 9115 AP from Flexconnect to Local mode and check if the AP reboot | To check if the 9115 AP reboots when AP mode is changed from flexconnect to Local mode . | Passed | |
| DNACJ223S_Reg_190 | Checking FlexConnect Local Switching and Local Auth works properly | To check if FlexConnect Local Switching and Local Auth works in Catalyst Ap and check if the clients gets locally authenticated and switched locally | Passed | |
| DNACJ223S_Reg_191 | Rebooting the catalyst AP's | To check if the Catalyst AP gets Rebooted or not and check if the AP joins the controller again. | Passed | |

REVIEW DRAFT - CISCO CONFIDENTIAL

| | | | | |
|-------------------|---|--|--------|--|
| DNACJ223S_Reg_192 | Rebooting the 9115 AP with primary controller given in High Availability | To reboot the 9115 AP by giving the primary controller IP using high availability and check if the AP joins the primary controller | Passed | |
| DNACJ223S_Reg_193 | Checking the details of the Catalyst AP & the Client connectivity through the CLI | To check the details of the catalyst AP & client connectivity using CLI | Passed | |
| DNACJ223S_Reg_194 | Monitoring the intra client Roaming details in DNAC with catalyst AP's | To verify whether the client is roaming between Catalyst AP's or not | Passed | |

Assurance workflow changes to support Device RMA

| Logical id | Title | Description | Status | Defect ID |
|-------------------|---|--|--------|-----------|
| DNACJ223S_Reg_195 | Provision network devices in DNAC using Inventory & PNP flow | To provision network devices in DNAC using Inventory & PNP flow | Passed | |
| DNACJ223S_Reg_196 | Perform the RMA flow in DNAC and verify the details | To Perform the RMA flow in DNAC and verify the details | Passed | |
| DNACJ223S_Reg_197 | Check if device is marked/unmarked for replacement based on chosen option | To Check if device is marked/unmarked for replacement based on chosen option | Passed | |
| DNACJ223S_Reg_198 | Mark a reachable device for replacement and check the behaviour. | To mark a reachable device for replacement and check the behaviour. | Passed | |
| DNACJ223S_Reg_199 | Monitor replacement status of marked device | To monitor replacement status of marked device | Passed | |

REVIEW DRAFT - CISCO CONFIDENTIAL

| | | | | |
|-------------------|---|--|--------|--|
| DNACJ223S_Reg_200 | Adding new unclaimed device during replacement | To add a new unclaimed device during device replacement | Passed | |
| DNACJ223S_Reg_201 | Try adding device with different platform id as a replacement | To try adding device with different platform id as a replacement | Passed | |
| DNACJ223S_Reg_202 | Check if marked for replacement device can be used as replacement | To check if marked for replacement device can be used as replacement | Passed | |

Assurance workflow changes to support AP Refresh

| Logical id | Title | Description | Status | Defect ID |
|-------------------|--|---|--------|-----------|
| DNACJ223S_Reg_203 | Provision network devices in DNAC using Inventory & PNP flow | To provision network devices in DNAC using Inventory & PNP flow | Passed | |
| DNACJ223S_Reg_204 | Perform AP Refresh flow in DNAC and verify the details | To perform AP Refresh flow in DNAC and verify the details | Passed | |
| DNACJ223S_Reg_205 | Check the report after Ap Refresh process is done | To verify AP details in report after ap replacement | Passed | |
| DNACJ223S_Reg_206 | AP Refresh process using different model AP(9115 to 9130) | To verify AP Refresh with different AP model | Passed | |
| DNACJ223S_Reg_207 | Verify AP refresh works fine for all model APs | Verify AP refresh works fine for all model APs | Passed | |
| DNACJ223S_Reg_208 | Choosing new AP from same controller for AP refresh | To choose new AP from same controller for AP refresh | Passed | |
| DNACJ223S_Reg_209 | Choosing new AP from different controller for AP refresh | To choose new AP from different controller for AP refresh | Passed | |

REVIEW DRAFT - CISCO CONFIDENTIAL

| | | | | |
|-------------------|--|---|--------|--|
| DNACJ223S_Reg_210 | Perform AP refresh process for bulk amount of AP's | To perform AP refresh process for bulk amount of AP's | Passed | |
|-------------------|--|---|--------|--|

Smart Licencing

| Logical id | Title | Description | Status | Defect ID |
|-------------------|--|---|--------|-----------|
| DNACJ223S_Reg_211 | Configuring Smart account in DNAC via UI | To Configuring Smart account in DNAC via UI and check if the Profile is created or not | Passed | |
| DNACJ223S_Reg_212 | Configuring Smart account in DNAC via UI with wrong credentials. | To Configuring Smart account in DNAC via UI with wrong credentials and verify it giving proper error messages . | Passed | |
| DNACJ223S_Reg_213 | Verify able to featch the satilite name | To Verify able to featch the satilite name correctly with out any issues. | Passed | |
| DNACJ223S_Reg_214 | Verify able to show proper error message for smart account adding. | To Verify able to show proper error message for smart account adding. | Passed | |
| DNACJ223S_Reg_215 | Verify SSM Connection Mode :Direct | To Verify SSM Connection Mode :Direct | Passed | |
| DNACJ223S_Reg_216 | Verify SSM Connection Mode:On-Prem CSSM : | To Verify SSM Connection Mode:On-Prem CSSM : | Passed | |
| DNACJ223S_Reg_217 | Verify SSM Connection Mode: proxy | To Verify SSM Connection Mode: proxy: | Passed | |
| DNACJ223S_Reg_218 | Verify SSM Connection Mode :Direct with 9800-40 model controller. | To Verify SSM Connection Mode :Direct with 9800-40 model controller. | Passed | |

REVIEW DRAFT - CISCO CONFIDENTIAL

| | | | | |
|-------------------|--|--|--------|--|
| DNACJ223S_Reg_219 | Verify SSM Connection Mode :Direct with 9800-80 model controller. | To Verify SSM Connection Mode :Direct with 9800-80 model controller. | Passed | |
| DNACJ223S_Reg_220 | Verify SSM Connection Mode :Direct with 9800-L model controller. | To Verify SSM Connection Mode :Direct with 9800-L model controller. | Passed | |
| DNACJ223S_Reg_221 | Verify SSM Connection Mode :On-Prime CSSM with 9800-40 model controller. | To Verify SSM Connection Mode :Direct with 9800-40 model controller. | Passed | |
| DNACJ223S_Reg_222 | Verify SSM Connection Mode :On-Prime CSSM with 9800-80 model controller. | To Verify SSM Connection Mode :Direct with 9800-80 model controller. | Passed | |
| DNACJ223S_Reg_223 | Verify SSM Connection Mode :On-Prime CSSM with 9800-L model controller. | To Verify SSM Connection Mode :Direct with 9800-L model controller. | Passed | |

All Data Report - Inventory and SWIM

| Logical id | Title | Description | Status | Defect ID |
|-------------------|---|--|--------|------------|
| DNACJ223S_Reg_224 | Generate the Inventory report as PDF format | To Check the report generated as PDF format or not | Passed | |
| DNACJ223S_Reg_225 | Generate the Inventory report as CSV format | To Check the report generated as CSV format or not | Failed | CSCvy87825 |
| DNACJ223S_Reg_226 | Generate the Inventory report as TDE format | To Check the report generated as TDE format or not | Passed | |
| DNACJ223S_Reg_227 | Generate the Inventory report with schedule time as now | To Check the report generated in schedule now time | Passed | |
| DNACJ223S_Reg_228 | Generate the Inventory report with schedule time as Run later | To Check the report generated in schedule later time | Passed | |

REVIEW DRAFT - CISCO CONFIDENTIAL

| | | | | |
|-------------------|--|---|--------|--|
| DNACJ223S_Reg_229 | Generate the Inventory report with schedule time as Run Recurring option | To Check the report generated in schedule recurring time | Passed | |
| DNACJ223S_Reg_230 | Generate the Inventory report with email notification | To Verify the notification generated or not with valid reprt details | Passed | |
| DNACJ223S_Reg_231 | Generate the Inventory report with webhook notification | To Verify the notification generated or not with valid reprt details | Passed | |
| DNACJ223S_Reg_232 | Generate the Inventory report after deleted all the devices in DNAC | To validate the report details shown or not after deteled the dvice in DNAC | Passed | |
| DNACJ223S_Reg_233 | Generate the SWIM report as PDF format | To Check the report generated as PDF format or not | Passed | |
| DNACJ223S_Reg_234 | Generate the SWIM report as CSV format | To Check the report generated as CSV format or not | Passed | |
| DNACJ223S_Reg_235 | Generate the SWIM report as TDE format | To Check the report generated as TDE format or not | Passed | |
| DNACJ223S_Reg_236 | Generate the SWIM report with schedule time as now | To Check the report generated in schedule now time | Passed | |
| DNACJ223S_Reg_237 | Generate the SWIM report with schedule time as Run later | To Check the report generated in schedule later time | Passed | |
| DNACJ223S_Reg_238 | Generate the SWIM report with schedule time as Run Recurring option | To Check the report generated in schedule recurring time | Passed | |
| DNACJ223S_Reg_239 | Generate the SWIM report with email notification | To Verify the notification generated or not with valid reprt details | Passed | |

REVIEW DRAFT - CISCO CONFIDENTIAL

| | | | | |
|-------------------|---|---|--------|--|
| DNACJ223S_Reg_240 | Generate the SWIM report with webhook notification | To Verify the notification generated or not with valid reprt details | Passed | |
| DNACJ223S_Reg_241 | Generate the SWIM report after deleted all the devices in DNAC | To validate the report details shown or not after deteled the dvice in DNAC | Passed | |
| DNACJ223S_Reg_242 | Generate the SWIM report without performing SWIM operation | To validate the report details shown or not without performing the SWIM operation | Passed | |
| DNACJ223S_Reg_243 | Create report in english UI and validate the details in Japanese UI | To check details are shown or not in Japanese UI | Passed | |

RRM assurance for granular reasons for power and channel change

| Logical id | Title | Description | Status | Defect ID |
|-------------------|--|---|--------|-----------|
| DNACJ223S_Reg_244 | Configuring Access Points, Channel width radio parameters for 5Ghz band. | To configure Access Points, Channel width radio parameters for 5Ghz band. | Passed | |
| DNACJ223S_Reg_245 | Configuring Access Points, Channel width radio parameters for 2.4Ghz band. | To configure Access Points, Channel width radio parameters for 2.4Ghz band. | Passed | |
| DNACJ223S_Reg_246 | Configure channel parameters for 5ghz band and monitor in DNAC | To configure channel parameters for 5ghz band and monitor in DNAC | Passed | |
| DNACJ223S_Reg_247 | Configure channel parameters for 5ghz band slot 2 and monitor in DNAC | To configure channel parameters for 5ghz band slot 2 and monitor in DNAC | Passed | |

REVIEW DRAFT - CISCO CONFIDENTIAL

| | | | | |
|-------------------|---|--|--------|--|
| DNACJ223S_Reg_248 | Configure channel parameters for 24ghz band and monitor in DNAC | To configure channel parameters for 24ghz band and monitor in DNAC | Passed | |
| DNACJ223S_Reg_249 | Configure channel parameters for dual band and monitor in DNAC | To configure channel parameters for dual band and monitor in DNAC | Passed | |
| DNACJ223S_Reg_250 | Channel updation and monitor assurance in DNAC | To perform channel updation and monitor assurance in DNAC | Passed | |
| DNACJ223S_Reg_251 | Configure tx power for 5ghz band and monitor in DNAC | To configure tx power for 5ghz band and monitor in DNAC | Passed | |
| DNACJ223S_Reg_252 | Configure tx power for 24ghz band and monitor in DNAC | To configure tx power for 24ghz band and monitor in DNAC | Passed | |
| DNACJ223S_Reg_253 | Configure tx power for dual band and monitor in DNAC | To configure tx power for dual band and monitor in DNAC | Passed | |
| DNACJ223S_Reg_254 | Configure tx power for 5ghz rrm band and monitor in DNAC | To configure tx power for 5ghz rrm band and monitor in DNAC | Passed | |
| DNACJ223S_Reg_255 | Configure tx power for 24ghz rrm band and monitor in DNAC | To configure tx power for 24ghz rrm band and monitor in DNAC | Passed | |
| DNACJ223S_Reg_256 | Validate assurance via RRM using Android client | To validate assurance via RRM using Android client | Passed | |
| DNACJ223S_Reg_257 | Validate assurance via RRM using Surface client | To validate assurance via RRM using Surface client | Passed | |
| DNACJ223S_Reg_258 | Validate assurance via RRM using mac client | To validate assurance via RRM using mac client | Passed | |
| DNACJ223S_Reg_259 | Validate assurance via RRM using different models of AP | To validate assurance via RRM using different models of AP | Passed | |

REVIEW DRAFT - CISCO CONFIDENTIAL

| | | | | |
|-------------------|--|---|--------|--|
| DNACJ223S_Reg_260 | Validate assurance via RRM using EWC-AP | To validate assurance via RRM using EWC-AP | Passed | |
| DNACJ223S_Reg_261 | Validate assurance via RRM using HA pair | To validate assurance via RRM using HA pair | Passed | |

Assurance: Client 360 Usage Events

| Logical id | Title | Description | Status | Defect ID |
|-------------------|---|--|--------|-----------|
| DNACJ223S_Reg_262 | Adding network devices in DNAC | To add network devices like switches, Controllers to DNAC and check if the network devices gets added to DNAC or not | Passed | |
| DNACJ223S_Reg_263 | Connecting a Windows clients to a WLAN and check if the client health ,Active clients detail is shown in the wireless Clients dashlet | To connect a Window clients to the wlan created and check if the clients health is shown in the wireless client summary | Passed | |
| DNACJ223S_Reg_264 | Connecting a Android clients to a WLAN and check if the client health ,Active clients detail is shown in the wireless Clients dashlet | To connect a Android clients to the wlan created and check if the clients health is shown in the wireless client summary | Passed | |
| DNACJ223S_Reg_265 | Connecting a IOS clients to a WLAN and check if the client health ,Active clients detail is shown in the wireless Clients dashlet | To connect a IOS clients to the wlan created and check if the clients health is shown in the wireless client summary | Passed | |

REVIEW DRAFT - CISCO CONFIDENTIAL

| | | | | |
|-------------------|--|---|--------|--|
| DNACJ223S_Reg_266 | Connecting a Mac OS clients to a WLAN and check if the client health ,Active clients detail is shown in the wireless Clients dashlet | To connect a Mac OS clients to the wlan created and check if the clients health is shown in the wireless client summary | Passed | |
| DNACJ223S_Reg_267 | Connecting a Wired client to a RLAN and check if the client health is shown in the wired Clients dashlet | To connect a clients to the rlan created and check if the clients health is shown in the wired client summary | Passed | |
| DNACJ223S_Reg_268 | Validating the client onboarding times in client health page | To vaildate the client onboarding times in client health page in DNAC assurance | Passed | |
| DNACJ223S_Reg_269 | Validating the client connectivity RSSI in client health page | To vaildate the client connectivity RSSI in client health page in DNAC assurance | Passed | |
| DNACJ223S_Reg_270 | Validating the client connectivity SNR in client health page | To vaildate the client connectivity RSSI in client health page in DNAC assurance | Passed | |

Config Wireless

| Logical ID | Title | Description | Status | Defect ID |
|--------------------|---|--|--------|------------|
| DNACJ223S_config_1 | NCND number is alone shown in the error message in MOTD in DNAC Japanese UI | To verify the NCND number e error message in MOTD in DNAC Japanese UI | Passed | CSCvy80086 |
| DNACJ223S_config_2 | Time in the Network Device chart is hidden | To verify whether theTime in the Network Device chart is hidden or not | Passed | CSCvy86432 |

REVIEW DRAFT - CISCO CONFIDENTIAL

| | | | | |
|--------------------|--|---|--------|------------|
| DNACJ223S_config_3 | Group based Access Control Landing Page is different in Japanese UI | To validate the Group based Access Control Landing Page is different in Japanese UI or not | Failed | CSCvy87820 |
| DNACJ223S_config_4 | Download text seems to be cutoff for Japanese locale in s/w update page | To verify the Download text seems to be cutoff for Japanese locale in s/w update page or not | Passed | CSCvy93925 |
| DNACJ223S_config_5 | Software updates - headers incorrectly aligned in package info tooltip for Japanese locale | To validate the Software updates - headers incorrectly aligned in package info tooltip for Japanese locale or not | Passed | CSCvy93968 |
| DNACJ223S_config_6 | Virtual Networks Options name showing "undefined" in Japanese UI | To verify the Virtual Networks Options name showing "undefined" in Japanese UI or not | Failed | CSCvz07951 |
| DNACJ223S_config_7 | Action dropdown list is blank for virtual network segment view in Japanese UI | To validate the Action dropdown list is blank for virtual network segment view in Japanese UI or not | Failed | CSCvz08100 |

REVIEW DRAFT - CISCO CONFIDENTIAL



CHAPTER 5

Related Documents

- [Related Documentation](#), on page 73

Related Documentation

Cisco Catalyst 9800 Series Wireless Controller Software Configuration Guide

https://www.cisco.com/c/en/us/td/docs/wireless/controller/9800/17-5/config-guide/b_wl_17_5_cg.html

Cisco Catalyst 9800 Series Wireless Controller 17.5 Configuration Guide

https://www.cisco.com/c/en/us/td/docs/wireless/controller/9800/17-5/config-guide/b_wl_17_5_cg.html

Cisco Catalyst 9800 Series Wireless Controller 17.5 Release Notes

<https://www.cisco.com/c/en/us/td/docs/wireless/controller/9800/17-5/release-notes/rn-17-5-9800.html>

Release Notes for Cisco Digital Network Architecture Spaces

<https://www.cisco.com/c/en/us/td/docs/wireless/cisco-dna-spaces/release-notes/cisco-dnaspaces-mar21.html>

Cisco Catalyst 9600 Series Switches 17.5 Release Notes

https://www.cisco.com/c/en/us/td/docs/switches/lan/catalyst9600/software/release/17-5/release_notes/ol-17-5-9600.html

Release Notes Cisco Digital Network Architecture Center

https://www.cisco.com/c/en/us/td/docs/cloud-systems-management/network-automation-and-management/%20dna-center/2-1-2/release_notes/b_cisco_dna_center_rn_2_1_2.html

PI 3.9 User Guide

https://www.cisco.com/c/en/us/td/docs/net_mgmt/prime/infrastructure/3-9/user/guide/bk_CiscoPrimeInfrastructure_3_9_0_UserGuide.html

ISE 3.0 Release Notes

https://www.cisco.com/c/en/us/td/docs/security/ise/3-0/release_notes/b_ise_30_rn.html

REVIEW DRAFT - CISCO CONFIDENTIAL