



Test Results Summary for Cisco DNA Center Automation & Assurance (Release Version 2.2.2)

First Published: 2021-01-19

Last Modified: 2021-01-21

Americas Headquarters

Cisco Systems, Inc.
170 West Tasman Drive
San Jose, CA 95134-1706
USA
<http://www.cisco.com>
Tel: 408 526-4000
800 553-NETS (6387)
Fax: 408 527-0883



CONTENTS

CHAPTER 1	Overview	1
	Cisco DNA Center test	1

CHAPTER 2	Test topology and Environment Matrix	7
	Test Topology	7
	Component Matrix	8
	What's New ?	10
	Open Caveats	11
	Resolved Caveats	11

CHAPTER 3	New Features	13
	RRM assurance for granular reasons for power and channel change	13
	Bulk API support to add/remove devices from site	15
	PoE port details	17
	VLAN Mismatch	18
	Client 360 Usage Events	19
	Device 360 Usage Events	20
	DNA Space Integration	21

CHAPTER 4	Regression Features	23
	All Data Report - Inventory and SWIM	23
	AP Upgrade Flow	25
	Assurance workflow changes to support AP Refresh	26
	Assurance workflow changes to support Device RMA	27
	Channel Change Count Report	28
	Client and Application Health Dashboard	29

Client Summary Report 31

CMX Support 33

DNA Spaces support 34

DNAC Support for eWC 36

Guest web passthrough 38

Mobility configuration 39

Network Device Availability Report 41

New AP Support(ICAP) 42

Overall and Network Health Dashboard 44

PnP 47

Rolling AP Upgrade 49

RSSI and SNR in ASSOC request 50

RSSI and SNR in ASSOC request 52

Samsung Device Support 54

Smart Licencing 55

SWIM 57

Top N Summary 58

Config Wireless 60

CHAPTER 5

Related Documents 61

Related Documentation 61



CHAPTER 1

Overview

- [Cisco DNA Center test](#) , on page 1

Cisco DNA Center test

Cisco DNA Center test , an integral part of the enterprise wireless solution, is a program that validates various Cisco Wireless Products and Features. This is achieved by testing the latest versions of Cisco wireless products

Cisco DNA Center for Japan , in turn is an add-on testing at the solution level, where the requirements gathered are specific to Japanese usage and market. The requirements are derived based on the following:

- New features in DNA center 2.2.2
- High priority scenarios and basic regression features
- Inputs from Cisco SEs/ TAC

The test execution is carried out on selected Cisco Wireless LAN products, which affect the Japanese segment that are prioritized by Cisco Japan team.

The following products are covered in the test execution:

- Cisco Catalyst 9800 Series Wireless Controller
- Cisco Virtual Elastic Wireless LAN Controller 9800
- Cisco Catalyst 9800-CL
- Cisco Embedded Wireless Controller on Catalyst Access Points
- Cisco DNA Space
- Cisco DNA Connector
- Connected Mobile Experiences (CMX)
- ISE(VM)
- Cisco ISR 1100
- Cisco AP c9115
- Cisco AP c9120

- Cisco AP c9130
- Cisco AP c9105
- Access Point 4800
- Access Point 3800
- Access Point 2800
- Access Point 1570
- Access Point 1542
- Access Point 1530
- Access Point 702I
- Access Point 1850
- Access Point 1830
- Access Point 1815I
- Access Point 1815W
- Access Point 1810

Acronyms

Acronym	Description
AAA	Authentication Authorization and Accounting
ACL	Access Control List
ACS	Access Control Server
AKM	Authentication Key Management
AP	Access Point
API	Application Programming Interface
APIC-EM	Application Policy Infrastructure Controller - Enterprise Module
ATF	Air-Time Fairness
AVC	Application Visibility and Control.
BGN	Bridge Group Network
BLE	Bluetooth Low Energy
BYOD	Bring Your Own Device
CA	Central Authentication
CAC	Call Admissions Control
CAPWAP	Control and Provisioning of Wireless Access Point
CCKM	Cisco Centralized Key Management

Acronym	Description
CCN	Channel Change Notification
CCX	Cisco Compatible Extensions
CDP	Cisco Discovery Protocol
CKIP	Cisco Key Integrity Protocol
CMX	Connected Mobile Experience
CVBF	Cisco Vector Beam Forming
CWA	Central Web Authentication
DCA	Dynamic Channel Assignment
DMZ	Demilitarized Zone
DNS	Domain Name System
DNA-C	Digital Network Architecture Center
DTIM	Delivery Traffic Indication Map
DSCP	Differentiated Services Code Point
DTLS	Datagram Transport Layer Security
EAP	Extensible Authentication Protocol
EULA	End User Licence Agreement
EWC	Embedded Wireless Controller
FLA	Flex Local Authentication
FLS	Flex Local Switching
FT	Fast Transition
FTP	File Transfer Protocol
FW	Firm Ware
HA	High Availability
H-REAP	Hybrid Remote Edge Access Point
IOS	Internetwork Operating System
ISE	Identity Service Engine
ISR	Integrated Services Router
LAG	Link Aggregation
LEAP	Lightweight Extensible Authentication Protocol
LSS	Location Specific Services
LWAPP	Lightweight Access Point Protocol
MAP	Mesh Access Point

Acronym	Description
MCS	Modulation Coding Scheme
MFP	Management Frame Protection
mDNS	multicast Domain Name System
MIC	Message Integrity Check
MSE	Mobility Service Engine
MTU	Maximum Transmission Unit
NAC	Network Admission Control
NAT	Network Address Translation
NBAR	Network Based Application Recognition
NCS	Network Control System
NGWC	Next Generation Wiring closet
NMSP	Network Mobility Services Protocol
OEAP	Office Extended Access Point
PEAP	Protected Extensible Authentication Protocol
PEM	Policy Enforcement Module
PI	Prime Infrastructure
PMF	Protected Management Frame
POI	Point of Interest
PPPoE	Point-to-Point Protocol over Ethernet
PSK	Pre-shared Key
QOS	Quality of service
RADIUS	Remote Authentication Dial-In User Service
RAP	Root Access Point
RP	Redundancy Port
RRM	Radio Resource Management
SDN	Software Defined Networking
SOAP	Simple Object Access Protocol
SFTP	Secure File Transfer Protocol
SNMP	Simple Network Management Protocol
SS	Spatial Stream
SSID	Service Set Identifier
SSO	Single Sign On

Acronym	Description
SSO	Stateful Switch Over
SWIM	Software Image Management
TACACS	Terminal Access Controller Access Control System
TCP	Transmission Control Protocol
TFTP	Trivial File Transfer Protocol
TLS	Transport Layer Security
UDP	User Datagram Protocol
vWLC	Virtual Wireless LAN Controller
VPC	Virtual port channel
VPN	Virtual Private Network
WEP	Wired Equivalent Privacy
WGB	Workgroup Bridge
wIPS	Wireless Intrusion Prevention System
WLAN	Wireless LAN
WLC	Wireless LAN Controller
WPA	Wi-Fi Protected Access
WSM	Wireless Security Module

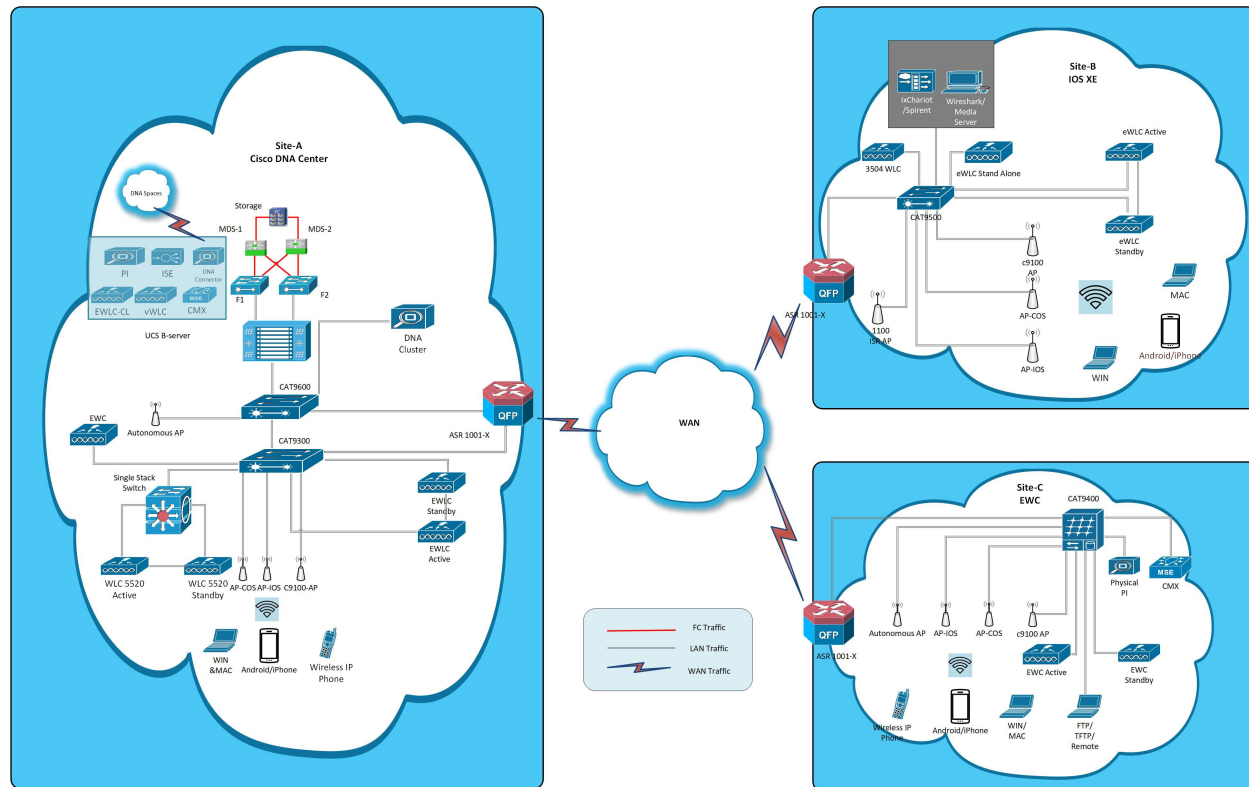


CHAPTER 2

Test topology and Environment Matrix

- Test Topology, on page 7
- Component Matrix, on page 8
- What's New ?, on page 10
- Open Caveats, on page 11
- Resolved Caveats, on page 11

Test Topology



Component Matrix

Category	Component	Version
Controller	Cisco Elastic Wireless LAN Controller 9800	17.5
	Cisco Virtual Elastic Wireless LAN Controller 9800	17.5
	Cisco Catalyst 9800-L Wireless Controller	17.5
	Cisco Embedded Wireless Controller on Catalyst Access Points	17.5
	Virtual Controller	8.10.121.0
Applications	DNAC	2.2.2
	DNA Spaces	Cloud (Dec 2020)
	DNA Spaces Connector	2.2.295
	Prime Infrastructure (Virtual Appliance, UCS based)	3.9.0.0
	ISE(VM)	3.0.0.393
	CMX(Physical (3375), VM)	10.6.2
	MSE(Physical (3365), VM)	8.0.150.0
	Cisco Jabber for Windows, iPhone	12.6.0
	Cisco Air Provisioning App	1.4
	Cisco Wireless App	1.0.228

Category	Component	Version
Access Point	Cisco AP 9115	17.5
	Cisco AP 9120	17.5
	Cisco AP 9130	17.5
	Cisco AP 9105	17.5
	Cisco 1100 ISR	17.5
	Cisco AP 4800	15.3
	Cisco AP 3800	15.3
	Cisco AP 2800	15.3
	Cisco AP 1850	15.3
	Cisco AP 1830	15.3
	Cisco AP 1815	15.3
	Cisco AP 1810	15.3
	Cisco AP 1570	15.3
	Cisco AP 1562	15.3
	Cisco AP 1542	15.3
Cisco AP 1532	15.3	
Cisco AP 702I	15.3	
Switch	Cisco Cat 9300	17.5
	Cisco Cat 9200L	17.5
	Cisco Cat 9800	17.5
	Cisco 3750V2 switch	15.0(2)SE2
	Cisco Cat 6509-E	15.1(1)SY1
Chipset	5300, 6300 AGN	15.40.41.5058
	7265 AC	21.40.2
	Airport Extreme	7.9.1

Category	Component	Version
Client	Operating System(JOS)	Windows 8 & 8.1 Enterprise
		Windows XP Professional
		Windows 10
	Apple Mac Book Pro, Apple Mac Book Air (JP Locale)	Mac OS 11.2.1
	iPad Pro	iOS 14.4
	iPhone 6, 6S ,7 & 11 (JP Locale)	iOS 14.3
	Samsung Galaxy S7,S10, Nexus 6P, Sony Xperia XZ	Android 10.0
	Wireless IP Phone 8821	11.0.4-14
	End points	Windows 7 Enterprise
		Apple Mac 10.15
		Windows 8 & 8.1
		iPhone 6,6S ,7 & 11
		Windows 10
		Samsung Galaxy S4, S7,S10, Nexus 6P, Sony Xperia
Cisco AnyConnect VPN Client	4.9.01095	
MS surface GO	Windows 10	
Module	Hyper location Module	NA
Active Directory	AD	Windows server 2019
Call Control	Cisco Unified Communications Manager	12.5.0.99832-3/12.5.0.99832-3-1(JP)
Browsers	IE	11.0
	Mozilla Firefox	84.0.2
	Safari	14.0.2
	Chrome	88.0.4324.96

What's New ?

DNA Center

- RRM assurance for granular reasons for power and channel change
- Bulk API support to add/remove devices from site
- PoE port details

- VLAN Mismatch
- Assurance: Client 360 Usage Events
- Assurance: Device 360 Usage Events
- DNA Space Integration

Open Caveats

Defect ID	Title
CSCvw93755	Unable to config the mobility peer configuration using helping guide
CSCvw94976	Command Add button is not working in Tools->Command Runner

Resolved Caveats

Defect ID	Title
CSCvw78593	Wireless profile not working in DNAC
CSCvw55156	Inventory preview 2.0 - Export works even when we select no as option
CSCvw94729	Missing Ports in Graphical representation of Port status
CSCvx06453	Unable to import bulk AP file after importing invalid fil
CSCvw49249	Unable to create policies in DNAC
CSCvw89634	Code values displayed on system settings high availability page



CHAPTER 3

New Features

- RRM assurance for granular reasons for power and channel change, on page 13
- Bulk API support to add/remove devices from site, on page 15
- PoE port details, on page 17
- VLAN Mismatch, on page 18
- Client 360 Usage Events, on page 19
- Device 360 Usage Events, on page 20
- DNA Space Integration, on page 21

RRM assurance for granular reasons for power and channel change

Logical ID	Title	Description	Status	Defect ID
DNACJ222S_RRM_01	Configuring Access Points, Channel width radio parameters for 5Ghz band.	To configure Access Points, Channel width radio parameters for 5Ghz band.	Passed	
DNACJ222S_RRM_02	Configuring Access Points, Channel width radio parameters for 2.4Ghz band.	To configure Access Points, Channel width radio parameters for 2.4Ghz band.	Passed	
DNACJ222S_RRM_03	Configure channel parameters for 5ghz band and monitor in DNAC	To configure channel parameters for 5ghz band and monitor in DNAC	Passed	
DNACJ222S_RRM_04	Configure channel parameters for 5ghz band slot 2 and monitor in DNAC	To configure channel parameters for 5ghz band slot 2 and monitor in DNAC	Passed	

DNACJ222S_RRM_05	Configure channel parameters for 24ghz band and monitor in DNAC	To configure channel parameters for 24ghz band and monitor in DNAC	Passed	
DNACJ222S_RRM_06	Configure channel parameters for dual band and monitor in DNAC	To configure channel parameters for dual band and monitor in DNAC	Passed	
DNACJ222S_RRM_07	Channel updation and monitor assurance in DNAC	To perform channel updation and monitor assurance in DNAC	Passed	
DNACJ222S_RRM_08	Configure tx power for 5ghz band and monitor in DNAC	To configure tx power for 5ghz band and monitor in DNAC	Passed	
DNACJ222S_RRM_09	Configure tx power for 24ghz band and monitor in DNAC	To configure tx power for 24ghz band and monitor in DNAC	Passed	
DNACJ222S_RRM_10	Configure tx power for dual band and monitor in DNAC	To configure tx power for dual band and monitor in DNAC	Passed	
DNACJ222S_RRM_11	Configure tx power for 5ghz rrm band and monitor in DNAC	To configure tx power for 5ghz rrm band and monitor in DNAC	Passed	
DNACJ222S_RRM_12	Configure tx power for 24ghz rrm band and monitor in DNAC	To configure tx power for 24ghz rrm band and monitor in DNAC	Passed	
DNACJ222S_RRM_13	Validate assurance via RRM using Android client	To validate assurance via RRM using Android client	Passed	
DNACJ222S_RRM_14	Validate assurance via RRM using Surface client	To validate assurance via RRM using Surface client	Passed	
DNACJ222S_RRM_15	Validate assurance via RRM using mac client	To validate assurance via RRM using mac client	Passed	
DNACJ222S_RRM_16	Validate assurance via RRM using different models of AP	To validate assurance via RRM using different models of AP	Passed	

DNACJ222S_RRM_17	Validate assurance via RRM using EWC-AP	To validate assurance via RRM using EWC-AP	Passed	
DNACJ222S_RRM_18	Validate assurance via RRM using HA pair	To validate assurance via RRM using HA pair	Passed	

Bulk API support to add/remove devices from site

Logical ID	Title	Description	Status	Defect ID
DNACJ222S_BUL_01	Adding Site/Floor/Building to Site	To check whether the Site/Floor/building added successfully or not	Passed	
DNACJ222S_BUL_02	Removing Site/Floor/Building from the site	To Verify whether the Site/Floor/Building removed successfully or not from the site	Passed	
DNACJ222S_BUL_03	Import site as CSV format	To check whether the Site are imported as CSV file format	Passed	
DNACJ222S_BUL_04	Import Maps as CSV format	To validate whether the Maps are imported as CSV file format	Passed	
DNACJ222S_BUL_05	Import Bulk AP as CSV format	To check whether the Bulk AP are imported as CSV file format	Passed	
DNACJ222S_BUL_06	Import Site/Maps using other file format	To Verify whether the Site/Maps are imported other file format or not	Passed	
DNACJ222S_BUL_07	Exporting Sites & maps	To check whether sites & maps are exporting or not	Passed	
DNACJ222S_BUL_08	Downloading Prime template via bulk AP	To check whether the prime template downloaded successfully or not	Passed	

DNACJ222S_BUL_09	Downloading DNAC template via bulk AP	To validate whether the DNAC template downloaded successfully or not	Passed	
DNACJ222S_BUL_10	Adding devices using bulk AP	To check whether the devices are added or not using bulk AP	Passed	
DNACJ222S_BUL_11	Removing devices using bulk AP	To check whether the devices are removed or not using bulk AP	Passed	
DNACJ222S_BUL_12	Import Bulk AP using other file format	To Verify whether the Bulk AP imported other file format or not	Passed	
DNACJ222S_BUL_13	Checking prime template after changing AP name	To verify whether the Prime template showing proper or not after changing AP name	Passed	
DNACJ222S_BUL_14	Checking DNAC template after changing antenna elevation and Azimuth angle	To verify whether the DNAC template showing proper or not after changing antenna angles	Passed	
DNACJ222S_BUL_15	Checking prime template after changing Building & floor name	To verify whether the Prime template showing proper or not after changing Building name & floor	Passed	
DNACJ222S_BUL_16	Import Ekahau Project via esx file format	To verify whether the ekahau project imported successfully or not	Passed	
DNACJ222S_BUL_17	Synchronize DNAC spaces/CMX	To check whether DNAC spaces & CMX sync properly	Passed	
DNACJ222S_BUL_18	Configuring DNAC with Network devices, clients, access points.	To configure DNAC with Network devices, clients, access points.	Passed	CSCvw49249

DNACJ222S_BUL_19	Check if device inventory is updated in report with addition of network devices.	To check if device inventory is updated in report with addition of network devices.	Passed	
------------------	--	---	--------	--

PoE port details

Logical ID	Title	Description	Status	Defect ID
DNACJ222S_POE_01	Verify whether the POE port is enabled in DNAC	To verify whether the POE port is enabled in DNAC	Passed	
DNACJ222S_POE_02	Verify whether the POE port is disabled in DNAC	To verify whether the POE port is disabled in DNAC	Passed	
DNACJ222S_POE_03	Verify whether the POE port is having max allocated power in DNAC	PoE port is showing max allocated power or not in DNAC	Passed	
DNACJ222S_POE_04	Verify whether the POE port with allocated power in DNAC	To verify whether the POE port with allocated power in DNAC	Passed	
DNACJ222S_POE_05	Verify whether the POE port module is Available(Watts) in DNAC	to verify whether the POE port module is Available(Watts) in DNAC	Passed	
DNACJ222S_POE_06	Verify whether the POE port has admin state as auto in DNAC	To verify whether the POE port has admin state as auto in DNAC	Passed	
DNACJ222S_POE_07	Verify whether the POE port has admin state as static in DNAC	to verify whether the POE port has admin state as static in DNAC	Passed	
DNACJ222S_POE_08	Verify whether the POE port has admin state as never in DNAC	To verify PoE port should show admin state as never in DNAC	Passed	
DNACJ222S_POE_09	Verify POE LED behaviour on switch at the time of rebooting in DNAC	POE LED behaviour on switch at the time of rebooting in DNAC	Passed	

DNACJ222S_POE_10	Verify POE LED behaviour after shutdown/no shutdown in DNAC	POE LED behaviour after shutdown/no shutdown in DNAC	Passed	
DNACJ222S_POE_11	Verify whether the POE port has power drawn of allocated power in DNAC	POE port has power drawn of allocated power in DNAC	Passed	
DNACJ222S_POE_12	Verify whether can be configure the amount of power budgeted to a powered device connected to a specific PoE port in DNAC	configure the amount of power budgeted to a powered device connected to a specific PoE port in DNAC	Passed	

VLAN Mismatch

Logical ID	Title	Description	Status	Defect ID
DNACJ222S_VLA_01	Validate network insight-vlan mismatch between two links which has different native vlan for switch	vlan mismatch page should show mismatch native vlan details	Passed	
DNACJ222S_VLA_02	Validate network insight-vlan mismatch between two links which has different allowed vlan	Mismatch vlan number should be visible on vlan mismatch page in inventory insight	Passed	
DNACJ222S_VLA_03	Validate network insight-vlan mismatch between two links which has same native vlan	vlan number should not be visible on vlan mismatch page in inventory insight for devices	Passed	
DNACJ222S_VLA_04	Validate vlan link mismatch when one device is assigned to site and another device is part of global site	vlan mismatch data should be reflected when user selected child site mismatch page	Passed	

DNACJ222S_VLA_05	Validate vlan link mismatch data is not reflected when one of the device(two devices are connected each other and had mismatch vlan data) deleted from inventory and validate vlan count is reduced	To validate no mismatch entry in DNAC and also to validate vlan count	Passed	
DNACJ222S_VLA_06	Validate network vlan expiry mismatch count is reduced from old count when device is deleted from dnac.	vlan mismatch data should not be reflected when user selected child site mismatch page	Passed	
DNACJ222S_VLA_07	Validate the Backup and Restore testing for VLAN Mismatch	Vlan mismatch should show the correct details	Passed	
DNACJ222S_VLA_08	Validate VLAN mismatch on a stack switch	Vlan mismatch should show the correct details	Passed	

Client 360 Usage Events

Logical ID	Title	Description	Status	Defect ID
DNACJ222S_CLI_01	Adding different network devices in DNAC	To add network devices like switches, Controllers to DNAC and check if the network devices gets added to DNAC or not	Passed	
DNACJ222S_CLI_02	Check details of the 9800-40 eWLC in DNAC Device 360° page	To check details of the 9800-40 eWLC in DNA Device 360°	Passed	
DNACJ222S_CLI_03	Check details of the 9800-80 eWLC in DNAC Device 360° page	To check details of the 9800-80 eWLC in DNA Device 360°	Passed	

DNACJ222S_CLI_04	Check details of the 9800-L eWLC in DNAC Device 360° page	To check details of the 9800-L eWLC in DNA Device 360°	Passed	
DNACJ222S_CLI_05	Check details of the 9800-Virtual eWLC in DNAC Device 360° page	To check details of the 9800-Virtual eWLC in DNA Device 360°	Passed	
DNACJ222S_CLI_06	Check details of the EWC in DNAC Device 360° page	To check details of the 9800-40 eWLC in DNA Device 360°	Passed	
DNACJ222S_CLI_07	Check the AP count and client count of eWLC in Device 360°	To check the AP count and client count of eWLC in Device 360°	Passed	
DNACJ222S_CLI_08	Check details of the AP in eWLC using DNAC Device 360° page	To check details of the AP in eWLC using DNAC Device 360° page	Passed	

Device 360 Usage Events

Logical ID	Title	Description	Status	Defect ID
DNACJ222S_DEV_01	Adding different network devices in DNAC	To add network devices like switches, Controllers to DNAC and check if the network devices gets added to DNAC or not	Passed	
DNACJ222S_DEV_02	Check details of the 9800-40 eWLC in DNAC Device 360° page	To check details of the 9800-40 eWLC in DNA Device 360°	Passed	
DNACJ222S_DEV_03	Check details of the 9800-80 eWLC in DNAC Device 360° page	To check details of the 9800-80 eWLC in DNA Device 360°	Passed	
DNACJ222S_DEV_04	Check details of the 9800-L eWLC in DNAC Device 360° page	To check details of the 9800-L eWLC in DNA Device 360°	Passed	

DNACJ222S_DEV_05	Check details of the 9800-Virtual eWLC in DNAC Device 360° page	To check details of the 9800-Virtual eWLC in DNA Device 360°	Passed	
DNACJ222S_DEV_06	Check details of the EWC in DNAC Device 360° page	To check details of the 9800-40 eWLC in DNA Device 360°	Passed	
DNACJ222S_DEV_07	Check the AP count and client count of eWLC in Device 360°	To check the AP count and client count of eWLC in Device 360°	Passed	
DNACJ222S_DEV_08	Check details of the AP in eWLC using DNAC Device 360° page	To check details of the AP in eWLC using DNAC Device 360° page	Passed	

DNA Space Integration

Logical ID	Title	Description	Status	Defect ID
DNACJ222S_DNA_01	Adding a space connector to DNA Spaces	To add a space connector to DNA spaces.	Passed	
DNACJ222S_DNA_02	Register Cisco DNA Spaces cluster with Cisco DNA Spaces.	To Register Cisco DNA Spaces cluster with Cisco DNA Spaces.	Passed	
DNACJ222S_DNA_03	Upgrading the DNA Space connector	To upgrade the DNA space connector and check if the connector is upgraded or not	Passed	
DNACJ222S_DNA_04	Adding Map in DNAC and sync maps with dnas	To Add Map in DNAC and sync maps with dnas	Passed	
DNACJ222S_DNA_05	Add user	Add User to DNAS and verify whether privilege provide are properly accessible	Passed	
DNACJ222S_DNA_06	Delete dnac instance from spaces	To Delete DNAS instance created	Passed	
DNACJ222S_DNA_07	deactivate DNAS from DNAC	To deactivate DNAS from DNAC	Passed	



CHAPTER 4

Regression Features

- All Data Report - Inventory and SWIM, on page 23
- AP Upgrade Flow, on page 25
- Assurance workflow changes to support AP Refresh, on page 26
- Assurance workflow changes to support Device RMA, on page 27
- Channel Change Count Report, on page 28
- Client and Application Health Dashboard, on page 29
- Client Summary Report, on page 31
- CMX Support, on page 33
- DNA Spaces support, on page 34
- DNAC Support for eWC, on page 36
- Guest web passthrough, on page 38
- Mobility configuration, on page 39
- Network Device Availability Report, on page 41
- New AP Support(ICAP), on page 42
- Overall and Network Health Dashboard, on page 44
- PnP, on page 47
- Rolling AP Upgrade, on page 49
- RSSI and SNR in ASSOC request, on page 50
- RSSI and SNR in ASSOC request, on page 52
- Samsung Device Support, on page 54
- Smart Licencing, on page 55
- SWIM, on page 57
- Top N Summary, on page 58
- Config Wireless, on page 60

All Data Report - Inventory and SWIM

Logical ID	Title	Description	Status	Defect ID
DNACJ222S_Reg_222	Generate the Inventory report as PDF format	To Check the report generated as PDF format or not	Passed	CSCvw55156

DNACJ222S_Reg_223	Generate the Inventory report as CSV format	To Check the report generated as CSV format or not	Passed	
DNACJ222S_Reg_224	Generate the Inventory report as TDE format	To Check the report generated as TDE format or not	Passed	
DNACJ222S_Reg_225	Generate the Inventory report with schedule time as now	To Check the report generated in schedule now time	Passed	
DNACJ222S_Reg_226	Generate the Inventory report with schedule time as Run later	To Check the report generated in schedule later time	Passed	
DNACJ222S_Reg_227	Generate the Inventory report with schedule time as Run Recurring option	To Check the report generated in schedule recurring time	Passed	
DNACJ222S_Reg_228	Generate the Inventory report with email notification	To Verify the notification generated or not with valid report details	Passed	
DNACJ222S_Reg_229	Generate the Inventory report with webhook notification	To Verify the notification generated or not with valid report details	Passed	
DNACJ222S_Reg_230	Generate the Inventory report after deleted all the devices in DNAC	To validate the report details shown or not after deleted the device in DNAC	Passed	
DNACJ222S_Reg_231	Generate the SWIM report as PDF format	To Check the report generated as PDF format or not	Passed	
DNACJ222S_Reg_232	Generate the SWIM report as CSV format	To Check the report generated as CSV format or not	Passed	
DNACJ222S_Reg_233	Generate the SWIM report as TDE format	To Check the report generated as TDE format or not	Passed	
DNACJ222S_Reg_234	Generate the SWIM report with schedule time as now	To Check the report generated in schedule now time	Passed	

DNACJ222S_Reg_235	Generate the SWIM report with schedule time as Run later	To Check the report generated in schedule later time	Passed	
DNACJ222S_Reg_236	Generate the SWIM report with schedule time as Run Recurring option	To Check the report generated in schedule recurring time	Passed	
DNACJ222S_Reg_237	Generate the SWIM report with email notification	To Verify the notification generated or not with valid report details	Passed	
DNACJ222S_Reg_238	Generate the SWIM report with webhook notification	To Verify the notification generated or not with valid report details	Passed	
DNACJ222S_Reg_239	Generate the SWIM report after deleted all the devices in DNAC	To validate the report details shown or not after deleted the device in DNAC	Passed	
DNACJ222S_Reg_240	Generate the SWIM report without performing SWIM operation	To validate the report details shown or not without performing the SWIM operation	Passed	
DNACJ222S_Reg_241	Create report in English UI and validate the details in Japanese UI	To check details are shown or not in Japanese UI	Passed	

AP Upgrade Flow

Logical ID	Title	Description	Status	Defect ID
DNACJ222S_Reg_181	Upload AP details via GUI	To Verify the AP details uploaded or not via GUI	Passed	
DNACJ222S_Reg_182	Upload AP details via CSV file	To Verify the AP details uploaded or not via CSV file	Passed	

DNACJ222S_Reg_183	Select multiple ap for the replacement process	To Verify the AP details uploaded or not via CSV file with multiple ap details	Passed	
DNACJ222S_Reg_184	Download the report after Ap refresh process	To verify AP details in report after ap replacement	Passed	
DNACJ222S_Reg_185	Selecting the candidate for New AP from same controller	To verify AP should be selected in same controller	Passed	
DNACJ222S_Reg_186	Selecting the candidate for New AP from different controller	To verify AP should not be selected in different controller	Passed	
DNACJ222S_Reg_187	Choosing the wrong serial number for new AP	To verify the AP Refresh with wrong serial number	Passed	
DNACJ222S_Reg_188	AP Refresh with same model AP(9115 to 9115)	To verify AP Refresh with same AP model	Passed	
DNACJ222S_Reg_189	AP Refresh with different model AP(9115 to 9130)	To verify AP Refresh with different AP model	Passed	
DNACJ222S_Reg_190	Verifying the all model AP would be replacement process	To Verify Mark replacement works fine for all model APs	Passed	
DNACJ222S_Reg_191	Client association after AP Refresh	To verify Client association after refresh process	Passed	
DNACJ222S_Reg_192	Validating the configuration copied in new AP	To verify the configuration after AP refresh process	Passed	

Assurance workflow changes to support AP Refresh

Logical ID	Title	Description	Status	Defect ID
DNACJ222S_Reg_201	Provision network devices in DNAC using Inventory & PNP flow	To provision network devices in DNAC using Inventory & PNP flow	Passed	

DNACJ222S_Reg_202	Perform AP Refresh flow in DNAC and verify the details	To perform AP Refresh flow in DNAC and verify the details	Passed	
DNACJ222S_Reg_203	Check the report after Ap Refresh process is done	To verify AP details in report after ap replacement	Passed	
DNACJ222S_Reg_204	AP Refresh process using different model AP(9115 to 9130)	To verify AP Refresh with different AP model	Passed	
DNACJ222S_Reg_205	Verify AP refresh works fine for all model APs	Verify AP refresh works fine for all model APs	Passed	
DNACJ222S_Reg_206	Choosing new AP from same controller for AP refresh	To choose new AP from same controller for AP refresh	Passed	
DNACJ222S_Reg_207	Choosing new AP from different controller for AP refresh	To choose new AP from different controller for AP refresh	Passed	
DNACJ222S_Reg_208	Perform AP refresh process for bulk amount of AP's	To perform AP refresh process for bulk amount of AP's	Passed	

Assurance workflow changes to support Device RMA

Logical ID	Title	Description	Status	Defect ID
DNACJ222S_Reg_193	Provision network devices in DNAC using Inventory & PNP flow	To provision network devices in DNAC using Inventory & PNP flow	Passed	
DNACJ222S_Reg_194	Perform the RMA flow in DNAC and verify the details	To Perform the RMA flow in DNAC and verify the details	Passed	
DNACJ222S_Reg_195	Check if device is marked/unmarked for replacement based on chosen option	To Check if device is marked/unmarked for replacement based on chosen option	Passed	

DNACJ222S_Reg_196	Mark a reachable device for replacement and check the behaviour.	To mark a reachable device for replacement and check the behaviour.	Passed	
DNACJ222S_Reg_197	Monitor replacement status of marked device	To monitor replacement status of marked device	Passed	
DNACJ222S_Reg_198	Adding new unclaimed device during replacement	To add a new unclaimed device during device replacement	Passed	
DNACJ222S_Reg_199	Try adding device with different platform id as a replacement	To try adding device with different platform id as a replacement	Passed	
DNACJ222S_Reg_200	Check if marked for replacement device can be used as replacement	To check if marked for replacement device can be used as replacement	Passed	

Channel Change Count Report

Logical ID	Title	Description	Status	Defect ID
DNACJ222S_Reg_242	Generate the report as CSV format	To Check the report generated as CSV format or not	Passed	
DNACJ222S_Reg_243	Generate the report as TDE format	To Check the report generated as TDE format or not	Passed	
DNACJ222S_Reg_244	Generate the report as JSON format	To Check the report generated as JSON format or not	Passed	
DNACJ222S_Reg_245	Generate the report with schedule time as now	To Check the report generated in schedule now time	Passed	
DNACJ222S_Reg_246	Generate the report with schedule time as Run later	To Check the report generated in schedule later time	Passed	
DNACJ222S_Reg_247	Generate the report with schedule time as Run Recurring option	To Check the report generated in schedule recurring time	Passed	

DNACJ222S_Reg_248	Generate the report with email notification	To Verify the notification generated or not with valid report details	Passed	
DNACJ222S_Reg_249	Generate the report with webhook notification	To Verify the notification generated or not with valid report details	Passed	
DNACJ222S_Reg_250	Generate the report after deleted all the devices in DNAC	To validate the report details shown or not after deleted the device in DNAC	Passed	
DNACJ222S_Reg_251	Generate the report for the last 3 hours	To Check the report generated with last 3 hours details	Passed	
DNACJ222S_Reg_252	Generate the report for the last 7 days	To Check the report generated with last 7 days details	Passed	
DNACJ222S_Reg_253	Generate the report for the 24 Hrs	To Check the report generated with last 24 hours details	Passed	
DNACJ222S_Reg_254	Generate the report for the one month	To Check the report generated with last 30 days details	Passed	
DNACJ222S_Reg_255	Generate the report for the custom date	To Check the report generated within custom date	Passed	
DNACJ222S_Reg_256	Rerun the report from the generated report page	To check the report able to rerun from the generated page	Passed	

Client and Application Health Dashboard

Logical ID	Title	Description	Status	Defect ID
DNACJ222S_Reg_20	Adding network devices in DNAC	To add network devices like switches, Controllers to DNAC and check if the network devices gets added to DNAC or not	Failed	CSCvw88653

DNACJ222S_Reg_21	Connecting a Windows clients to a WLAN and check if the client health ,Active clients detail is shown in the wireless Clients dashlet	To connect a Window clients to the wlan created and check if the clients health is shown in the wireless client summary	Passed	
DNACJ222S_Reg_22	Connecting a Android clients to a WLAN and check if the client health ,Active clients detail is shown in the wireless Clients dashlet	To connect a Android clients to the wlan created and check if the clients health is shown in the wireless client summary	Passed	
DNACJ222S_Reg_23	Connecting a IOS clients to a WLAN and check if the client health ,Active clients detail is shown in the wireless Clients dashlet	To connect a IOS clients to the wlan created and check if the clients health is shown in the wireless client summary	Passed	
DNACJ222S_Reg_24	Connecting a Mac OS clients to a WLAN and check if the client health ,Active clients detail is shown in the wireless Clients dashlet	To connect a Mac OS clients to the wlan created and check if the clients health is shown in the wireless client summary	Passed	
DNACJ222S_Reg_25	Connecting a Wired client to a RLAN and check if the client health is shown in the wired Clients dashlet	To connect a clients to the rlan created and check if the clients health is shown in the wired client summary	Passed	
DNACJ222S_Reg_26	Validating the client onboarding times in client health page	To validate the client onboarding times in client health page in DNAC assurance	Passed	
DNACJ222S_Reg_27	Validating the client connectivity RSSI in client health page	To validate the client connectivity RSSI in client health page in DNAC assurance	Passed	

DNACJ222S_Reg_28	Validating the client connectivity SNR in client health page	To validate the client connectivity RSSI in client health page in DNAC assurance	Passed	
DNACJ222S_Reg_29	Check the client count per SSID and validating the same	To check the client count per ssid and validating the same through eWLC UI	Passed	
DNACJ222S_Reg_30	Check the client roaming times in client health dashboard in Assurance page	To check the client roaming times in client health page and check if the details show are correct.	Passed	
DNACJ222S_Reg_31	Validating the client data rate in Assurance client health page	To check if the client data rate is shown in the assurance client health page and validate if the data rate shown are correct	Passed	
DNACJ222S_Reg_32	Monitor the overall application health in assurance page of DNAC	To monitor the overall application health in the assurance page	Passed	

Client Summary Report

Logical ID	Title	Description	Status	Defect ID
DNACJ222S_Reg_257	Configuring DNAC with Network devices, clients, access points.	To configure DNAC with Network devices, clients, access points.	Passed	
DNACJ222S_Reg_258	Report generation using template	To do report generation using template	Passed	
DNACJ222S_Reg_259	Validate details in generated report	To validate details in generated report	Passed	
DNACJ222S_Reg_260	Adding multiple locations during report generation.	To add multiple locations during report generation.	Passed	

DNACJ222S_Reg_261	Verify client details in generated report.	To verify client details in generated report.	Passed	
DNACJ222S_Reg_262	Connect Android client and check if it is shown in the generated report.	To connect Android client and check if it is shown in the generated report.	Passed	
DNACJ222S_Reg_263	Connect iPhone client and check if it is shown in the generated report.	To connect iPhone client and check if it is shown in the generated report.	Passed	
DNACJ222S_Reg_264	Connect Mac client and check if it is shown in the generated report.	To connect Mac client and check if it is shown in the generated report.	Passed	
DNACJ222S_Reg_265	Check details of connected clients to 2.4Ghz & 5Ghz bands.	To check details of connected clients to 2.4Ghz & 5Ghz bands.	Passed	
DNACJ222S_Reg_266	Check device details with bad health in generated report.	To check device details with bad health in generated report.	Passed	
DNACJ222S_Reg_267	Check if device inventory is updated in report with addition of network devices/clients.	To check if device inventory is updated in report with addition of network devices/clients.	Passed	
DNACJ222S_Reg_268	Generate report with different time range values.	To generate report with different time range values.	Passed	
DNACJ222S_Reg_269	Generate report with different custom time range values.	To generate report with different custom time range values.	Passed	
DNACJ222S_Reg_270	Schedule report generation using template	To schedule report generation using template	Passed	
DNACJ222S_Reg_271	Schedule recurring report generation using template	To schedule recurring report generation using template	Passed	
DNACJ222S_Reg_272	Email report option during report generation	To check Email report option during report generation	Passed	

DNACJ222S_Reg_273	Webhook notification during report generation	To check webhook notification during report generation	Passed	
DNACJ222S_Reg_274	Edit config of generated report template	To edit config of generated report template	Passed	
DNACJ222S_Reg_275	Duplicate report option using existing report	To duplicate report option using existing report	Passed	
DNACJ222S_Reg_276	Trigger report generation using Run now option	To trigger report generation using Run now option	Passed	
DNACJ222S_Reg_277	Delete report using delete option under action tab	To delete report using delete option under action tab	Passed	

CMX Support

Logical ID	Title	Description	Status	Defect ID
DNACJ222S_Reg_96	Verify the CMX Support in DNAC	By adding the CMX with DNAC	Passed	
DNACJ222S_Reg_97	Verify CMX for the client location and displays the location on the floor map for Windows Machine	Display Client in Maps Windows	Passed	
DNACJ222S_Reg_98	Verify CMX for the client location and displays the location on the floor map for MAC Machine	Display Client in Maps MAC	Passed	
DNACJ222S_Reg_99	Verify CMX for the client location and displays the location on the floor map for Android	Display Client in Maps Android Mobile	Passed	
DNACJ222S_Reg_100	Verify CMX for the client location and displays the location on the floor map for Apple Mobile	Display Client in Maps Apple mobile	Passed	
DNACJ222S_Reg_101	Verify the Network health score of Controller 9800-40	Health Score of 9800-40	Passed	

DNACJ222S_Reg_102	Verify the Network health score of Controller 9800-80	Health Score of 9800-80	Passed	
DNACJ222S_Reg_103	Verify the Network health score of Controller 9800-L	Health Score of 9800-L	Passed	
DNACJ222S_Reg_104	Verify Overall Health Map or Hierarchical Site View or Building View dashlet	Building View Dashlet	Passed	
DNACJ222S_Reg_105	Verify Overall Health Summary dashlet	Overall Health Summary dashlet	Passed	

DNA Spaces support

Logical ID	Title	Description	Status	Defect ID
DNACJ222S_Reg_106	Connecting CMX to DNA Spaces using CMX Tethering	To connect CMX to DNA spaces using CMX tethering and check if the CMX is added	Passed	
DNACJ222S_Reg_107	Connecting CMX to DNA Spaces using CMX Tethering and adding Campuses from PI	To connect CMX to DNA spaces using CMX tethering and add campuses. check if the CMX is added and campuses are added to it.	Passed	
DNACJ222S_Reg_108	Connecting CMX to DNA Spaces using CMX Tethering and adding Campuses from DNAC	To connect CMX to DNA spaces using CMX tethering and add campuses. check if the CMX is added and campuses are added to it.	Passed	
DNACJ222S_Reg_109	Adding a space connector to DNA Spaces	To add a space connector to DNA spaces.	Passed	

DNACJ222S_Reg_110	Adding a controller to DNA Space using Space connector	To add a controller to DNA space using space connector and check if the controller is added or not.	Passed	
DNACJ222S_Reg_111	Upgrading the DNA Space connector	To upgrade the DNA space connector and check if the connector is upgraded or not	Passed	
DNACJ222S_Reg_112	Connecting AireOS wireless controller to DNA Spaces using WLC Direct Connect.	To connect AireOS controller to DNA Spaces using WLC Direct Connect.	Passed	
DNACJ222S_Reg_113	Adding a Wireless Network in DNA Spaces	To add a wireless network in DNA spaces and check if the wireless network is added to the DNA Spaces.	Passed	
DNACJ222S_Reg_114	Adding a Wireless Network in DNA Spaces	To add a wireless network in DNA spaces and check if the wireless network is added to the DNA Spaces.	Passed	
DNACJ222S_Reg_115	Connecting Catalyst 9800 wireless controller to DNA Spaces using WLC Direct Connect.	To connect Catalyst 9800 controller to DNA Spaces using WLC Direct Connect.	Passed	
DNACJ222S_Reg_116	Adding a Wireless Network in DNA Spaces	To add a wireless network in DNA spaces and check if the wireless network is added to the DNA Spaces.	Passed	
DNACJ222S_Reg_117	Adding Zone in DNA Spaces	To add zones in DNA spaces under location hierarchy	Passed	

DNACJ222S_Reg_118	Connect a WLC to DNA Spaces via Aireos WLC Direct connector using wrong token or certificate.	To connect a WLC to DNA Spaces via Aireos WLC direct connector using wrong token or certificate and check if the WLC is showing in location hierarchy or not.	Passed	
DNACJ222S_Reg_119	Adding a AP to the already configured WLC in DNA Space	Adding a AP to the already configured WLC and check if the AP count gets added increased	Passed	

DNAC Support for eWC

Logical ID	Title	Description	Status	Defect ID
DNACJ222S_Reg_135	Verifying device details in inventory after added/discovered in cisco DNA	To verify whether the device details are showing in inventory after added in cisco DNA	Passed	
DNACJ222S_Reg_136	Monitoring the devices after adding in cisco DNA and verifying same in eWC	Verifying whether added devices properly assured or monitoring in cisco DNA	Passed	
DNACJ222S_Reg_137	Discovering multiple devices in cisco DNA and check for the same count in monitored devices	Checking whether count of wireless devices are added in Cisco DNA and they are monitored properly or not	Passed	
DNACJ222S_Reg_138	Checking AP devices in inventory after Wireless controller discovered in cisco DNA	To verify whether all AP's details showing in inventory after device discovered	Passed	
DNACJ222S_Reg_139	Checking the AP's count in network health after successfully added in inventory	To verify AP's count in Assurance dashboard after added in inventory	Passed	

DNACJ222S_Reg_140	Resync the cisco DNA and checking for the newly added AP's count in device	To verify newly added AP's count in cisco DNA after resync	Passed	
DNACJ222S_Reg_141	Exporting the inventory details from cisco DNA	To verify whether user able to export the device inventory details or not	Passed	
DNACJ222S_Reg_142	Importing the inventory details to device from computer in cisco DNA	To verify whether user able to import the device inventory details or not	Passed	
DNACJ222S_Reg_143	Running the commands in cisco DNA using command runner	To check the output for device commands after run in command runner in cisco DNA	Passed	
DNACJ222S_Reg_144	Deleting the device from inventory in cisco DNA	To check whether user able to delete the device from inventory or not	Passed	
DNACJ222S_Reg_145	Checking the device reachability status in inventory after make the device down	To check whether reachability status change to "unreachable" or not when device is down	Passed	
DNACJ222S_Reg_146	Adding site and provisioning device	To check whether user able to create site and provision device	Passed	
DNACJ222S_Reg_147	Positioning AP's on site with different radios	To check AP's positioning after positioned with different radios	Passed	
DNACJ222S_Reg_148	Checking for internal AP details after device added discover	To verify whether EWC device showing as AP or not in inventory	Passed	
DNACJ222S_Reg_149	Connecting the clients to AP's and checking the client count in Dashboard	To verify the client details in client Health after connected to AP	Passed	

DNACJ222S_Reg_150	Provisioning the EWC in day0 via PnP profile and bring device day1	Verify that user is able to Provisioned the EWC in day0 via PnP profile or not	Passed	
DNACJ222S_Reg_151	Adding the ME in DNA-C via inventory method	Verify that user is able to add ME in DNA-C via inventory method or not	Passed	
DNACJ222S_Reg_152	Exporting the CSV file of EWC from DNAC using Credential export type	To check whether the exported CSV file using Credential export type has correct information of eWLC_ME	Passed	
DNACJ222S_Reg_153	Adding EWC to DNAC by Importing CSV file using Credential export type	To check whether the user is able to add eWLC_ME device in DNA-C by importing CSV file exported using Credential export type	Passed	
DNACJ222S_Reg_154	Exporting the CSV file of EWC from DNAC using data export type	To check whether the exported CSV file using data export type has correct information of eWLC_ME	Passed	

Guest web passthrough

Logical ID	Title	Description	Status	Defect ID
DNACJ222S_Reg_89	Deploying the guest SSID in eWLC UI from Dnac	To Verify whether the guest SSID deployed from Dnac or not	Passed	
DNACJ222S_Reg_90	Configuring Internal guest web passthrough	To Verify whether the redirection happened Internally or not	Passed	

DNACJ222S_Reg_91	Configuring External guest web passthrough	To Verify whether the redirection happened with external server or not	Passed	
DNACJ222S_Reg_92	Configuring sleeping client with timeout settings	To verify whether the client associate within the time period or not after wakeup	Passed	
DNACJ222S_Reg_93	Configuring sleeping client without timeout settings	To verify whether the client able to authenticate all the time after wakeup	Passed	
DNACJ222S_Reg_94	Creating web authentication Internal / external SSID	To verify whether the client association while configuring web authentication	Passed	
DNACJ222S_Reg_95	Configuring the web passthrough without sleeping client	To verify the client connectivity without sleeping client configuration	Passed	

Mobility configuration

Logical ID	Title	Description	Status	Defect ID
DNACJ222S_Reg_76	Configuring Mobility configuration in Controller	To verify the mobility configuration in controller	Failed	CSCvw93755
DNACJ222S_Reg_77	Checking the Mobility configuration in DNAC	To verify whether the mobility configurations are showing or not in DNAC	Passed	
DNACJ222S_Reg_78	Changing the Mobility group name in controller-1 and check the controller's status in DNAC	To verify whether the controller status in DNAC by changing the mobility group Name.	Passed	
DNACJ222S_Reg_79	Checking the Mobility groups configuration in HA setup	To check the mobility group configurations in DNAC during HA	Passed	

DNACJ222S_Reg_80	Checking the Mobility configuration between lightweight to virtual controller in DNAC	To check whether the mobility happens between lightweight & Virtual controller	Passed	
DNACJ222S_Reg_81	Checking the mobility configuration between virtual to 9800 controller in DNAC	To check whether the mobility happens between 9800 & Virtual controller	Passed	
DNACJ222S_Reg_82	Verifying the mobility configuration with Different Radio types in DNAC	To verify whether Client is Moving between Controllers with Different Radio type or not	Passed	
DNACJ222S_Reg_83	Verifying the mobility configuration with same Radio types in DNAC	To verify whether Client is Moving between Controllers with same Radio type or not	Passed	
DNACJ222S_Reg_84	Monitoring mobility configuration in DNAC using Android Client	To verify whether the Android client details are showing in DNAC or not	Passed	
DNACJ222S_Reg_85	Monitoring mobility configuration in DNAC using iOS Client	To verify whether the iOS client details are showing in DNAC or not	Passed	
DNACJ222S_Reg_86	Monitoring mobility configuration in DNAC using Windows Client	To verify whether the Windows client details are showing in DNAC or not	Passed	
DNACJ222S_Reg_87	Monitoring mobility configuration in DNAC using Mac Client	To verify whether the Mac client details are showing in DNAC or not	Passed	
DNACJ222S_Reg_88	Add/update/delete mobility peer configuration in DNAC	To check whether the mobility Peer configurations are add/Update/delete in DNAC	Passed	

Network Device Availability Report

Logical ID	Title	Description	Status	Defect ID
DNACJ222S_Reg_278	Configuring DNAC with Network devices, clients, access points.	To configure DNAC with Network devices, clients, access points.	Passed	
DNACJ222S_Reg_279	Report generation using template	To do report generation using template	Passed	
DNACJ222S_Reg_280	Validate details in generated report	To validate details in generated report	Passed	
DNACJ222S_Reg_281	Adding multiple locations during report generation.	To add multiple locations during report generation.	Passed	
DNACJ222S_Reg_282	Verify network device availability details in generated report.	To verify network device availability details in generated report.	Passed	
DNACJ222S_Reg_283	Verify network device availability details for different device types in generated report.	To verify network device availability details for different device types in generated report.	Passed	
DNACJ222S_Reg_284	Verify network device availability details in generated report after moving device to unreachable state.	To verify network device availability details in generated report after moving device to unreachable state.	Passed	
DNACJ222S_Reg_285	Check if device inventory is updated in report with addition of network devices.	To check if device inventory is updated in report with addition of network devices.	Passed	
DNACJ222S_Reg_286	Generate report with different time range values.	To generate report with different time range values.	Passed	
DNACJ222S_Reg_287	Generate report with different custom time range values.	To generate report with different custom time range values.	Passed	

DNACJ222S_Reg_288	Schedule report generation using template	To schedule report generation using template	Passed	
DNACJ222S_Reg_289	Schedule recurring report generation using template	To schedule recurring report generation using template	Passed	
DNACJ222S_Reg_290	Email report option during report generation	To check Email report option during report generation	Passed	
DNACJ222S_Reg_291	Webhook notification during report generation	To check webhook notification during report generation	Passed	
DNACJ222S_Reg_292	Edit config of generated report template	To edit config of generated report template	Passed	
DNACJ222S_Reg_293	Duplicate report option using existing report	To duplicate report option using existing report	Passed	
DNACJ222S_Reg_294	Trigger report generation using Run now option	To trigger report generation using Run now option	Passed	
DNACJ222S_Reg_295	Delete report using delete option under action tab	To delete report using delete option under action tab	Passed	

New AP Support(ICAP)

Logical ID	Title	Description	Status	Defect ID
DNACJ222S_Reg_168	Adding Catalyst AP's in Controller & checking the AP details in DNAC	To check whether catalyst AP's details are showing or not in DNAC	Passed	
DNACJ222S_Reg_169	Associating 9130 AP with different country code as with eWLC and checking the AP details	To associate 9130 AP with different country code and check if the AP does not get joined in DNAC	Passed	
DNACJ222S_Reg_170	Configuring 9115/9120/9130 AP with duplicate IP	To configure AP with a duplicate IP address and check if the AP shows error message or not.	Passed	

DNACJ222S_Reg_171	Connecting a Windows client to the Catalyst AP	To connect a window client to the AP and check the client connectivity in DNAC	Passed	
DNACJ222S_Reg_172	Connecting a Android client to the Catalyst AP	To connect a Android client to the AP and check the client connectivity in DNAC	Passed	
DNACJ222S_Reg_173	Connecting a IOS client to the catalyst AP	To connect a IOS client to the AP and check the client connectivity in DNAC	Passed	
DNACJ222S_Reg_174	Connecting a MAC client to the catalyst AP	To connect a MAC client to the AP and check the client connectivity in DNAC	Passed	
DNACJ222S_Reg_175	Changing the 9115 AP from Flex connect to Local mode and check if the AP reboot	To check if the 9115 AP reboots when AP mode is changed from flex connect to Local mode .	Passed	
DNACJ222S_Reg_176	Checking Flex Connect Local Switching and Local Auth works properly	To check if Flex Connect Local Switching and Local Auth works in Catalyst Ap and check if the clients gets locally authenticated and switched locally	Passed	
DNACJ222S_Reg_177	Rebooting the catalyst AP's	To check if the Catalyst AP gets Rebooted or not and check if the AP joins the controller again.	Passed	

DNACJ222S_Reg_178	Rebooting the 9115 AP with primary controller given in High Availability	To reboot the 9115 AP by giving the primary controller IP using high availability and check if the AP joins the primary controller	Passed	
DNACJ222S_Reg_179	Checking the details of the Catalyst AP & the Client connectivity through the CLI	To check the details of the catalyst AP & client connectivity using CLI	Passed	
DNACJ222S_Reg_180	Monitoring the intra client Roaming details in DNAC with catalyst AP's	To verify whether the client is roaming between Catalyst AP's or not	Passed	

Overall and Network Health Dashboard

Logical ID	Title	Description	Status	Defect ID
DNACJ222S_Reg_01	Adding network devices in DNAC	To add network devices like switches, Controllers to DNAC and check if the network devices gets added to DNAC or not	Passed	
DNACJ222S_Reg_02	Check if the added device is shown in the overall health dashboard	To check if the Network device added in DNAC is shown in the overall health dashboard	Passed	CSCvw94729
DNACJ222S_Reg_03	Connecting a Windows clients to a WLAN and check if the client health ,Active clients detail is shown in the wireless Clients dashlet	To connect a Window clients to the wlan created and check if the clients health is shown in the wireless client summary	Passed	

DNACJ222S_Reg_04	Connecting a Android clients to a WLAN and check if the client health ,Active clients detail is shown in the wireless Clients dashlet	To connect a Android clients to the wlan created and check if the clients health is shown in the wireless client summary	Passed	
DNACJ222S_Reg_05	Connecting a IOS clients to a WLAN and check if the client health ,Active clients detail is shown in the wireless Clients dashlet	To connect a IOS clients to the wlan created and check if the clients health is shown in the wireless client summary	Passed	
DNACJ222S_Reg_06	Connecting a Mac OS clients to a WLAN and check if the client health ,Active clients detail is shown in the wireless Clients dashlet	To connect a Mac OS clients to the wlan created and check if the clients health is shown in the wireless client summary	Passed	
DNACJ222S_Reg_07	Connecting a clients to a WLAN with WPA + WPA2 Security and check if the client health ,Active clients detail is shown in the wireless Clients dashlet	To connect a clients to the wlan with WPA + WPA2 security and check if the clients health is shown in the wireless client summary	Passed	
DNACJ222S_Reg_08	Connecting a clients to a WLAN with WPA2 + WPA3 Security and check if the client health ,Active clients detail is shown in the wireless Clients dashlet	To connect a clients to the wlan with WPA + WPA2 security and check if the clients health is shown in the wireless client summary	Passed	

DNACJ222S_Reg_09	Connecting a clients to a WLAN with Static WEP Security and check if the client health ,Active clients detail is shown in the wireless Clients dashlet	To connect a clients to the wlan with Static WEP security and check if the clients health is shown in the wireless client summary	Passed	
DNACJ222S_Reg_10	Connecting a Wired client to a RLAN and check if the client health is shown in the wired Clients dashlet	To connect a clients to the rlan created and check if the clients health is shown in the wired client summary	Passed	
DNACJ222S_Reg_11	Check the issue shown in the Top 10 issue types	To check if the issue shown in the top 10 issue type dashlet	Passed	
DNACJ222S_Reg_12	Resolving the issue shown and checking the resolved list	To check if the issue shown in the top 10 issue type dashlet are resolved and the resolved issue are show in resolved list or not	Passed	
DNACJ222S_Reg_13	Check if the added network device is shown in the Network Health page	To check if the Network device added in DNAC is shown in the Network health dashboard	Passed	
DNACJ222S_Reg_14	Validating the graphs shown for the network devices	To validate the if the graphs shown in the network health pages are correct	Passed	
DNACJ222S_Reg_15	Checking the total APs count in the network device page in Total AP count dashlet	To check the total APs count in the network health page which is added in eWLC and check if the AP count are shown correctly	Passed	

DNACJ222S_Reg_16	Checking the Top N APs count in the network device page in Assurance page	To check the Top N APs count in the network health page which is added in eWLC and check if the AP count are shown correctly	Passed	
DNACJ222S_Reg_17	Validating the Top N APs by High Interference in network device in Assurance page	To validate the Top N APs by high interference in the network health page which is added in eWLC and check if the AP count are shown correctly	Passed	
DNACJ222S_Reg_18	Making a eWLC down to check if the Dashboard are updated or not	To make the eWLC down and check if the dashboards in network health are updated accordingly	Passed	
DNACJ222S_Reg_19	Deleting the eWLC with AP and the dashboards	To delete the eWLC with multiples AP and check if the dashboards are updated	Passed	

PnP

Logical ID	Title	Description	Status	Defect ID
DNACJ222S_Reg_50	View devices from the Plug and Play tab	view devices from the Plug and Play tab	Passed	
DNACJ222S_Reg_51	Provision a Switch 9300 with PnP Configuration	Configure 9300 Switch with PNP	Passed	
DNACJ222S_Reg_52	Provision a Switch 9200 L with PnP Configuration	Configure 9200 Switch with PNP	Passed	
DNACJ222S_Reg_53	Provision a Switch 9500 with PnP Configuration	Configure 9500 Switch with PNP	Passed	
DNACJ222S_Reg_54	Provision a Router with PnP Configuration	Configure ISR Router with PNP	Passed	

DNACJ222S_Reg_55	Provision a Legacy router with PnP Configuration	Legacy Configure Router with PNP	Passed	
DNACJ222S_Reg_56	Provision a CSR Router with PnP Configuration	Configure CSR Router with PNP	Passed	
DNACJ222S_Reg_57	Provision a Wireless Controller 9800-40 with PnP Configuration	Configure Wireless Controller with PNP	Passed	
DNACJ222S_Reg_58	Provision a Wireless Controller 9800-80 with PnP Configuration	Configure Wireless Controller with PNP	Passed	
DNACJ222S_Reg_59	Provision a Wireless Controller 9800-L with PnP Configuration	Configure Wireless Controller with PNP	Passed	
DNACJ222S_Reg_60	Automate onboarding Image of a Switch with Plug and Play (PnP)	Load Image to Switch with PnP	Passed	
DNACJ222S_Reg_61	Automate onboarding Image of a Router with Plug and Play (PnP)	Load Image to Router with PnP	Passed	
DNACJ222S_Reg_62	Automate onboarding Image of a Controller 9800-40 with Plug and Play (PnP)	Load Image to Wireless Controller with PnP	Passed	
DNACJ222S_Reg_63	Automate onboarding Image of a Controller 9800-80 with Plug and Play (PnP)	Load Image to Wireless Controller with PnP	Passed	
DNACJ222S_Reg_64	Automate onboarding Image of a Controller 9800-L with Plug and Play (PnP)	Load Image to Wireless Controller with PnP	Passed	

Rolling AP Upgrade

Logical ID	Title	Description	Status	Defect ID
DNACJ222S_Reg_65	Providing the same controller name and ip address for primary controller and N+1 controller	To check whether the same controller name is accepted or not for primary controller and N+1 controller	Passed	
DNACJ222S_Reg_66	Upgrading the software image in a controller	To check whether the software image is upgraded in controller	Passed	
DNACJ222S_Reg_67	Scheduling the time to upgrade the software image into a controller.	To check whether the software image is upgraded into a controller in scheduling time	Passed	
DNACJ222S_Reg_68	Scheduling the time "Now" to upgrade the software image into a controller.	To check whether the software image is upgraded into a controller in scheduling time "Now"	Passed	
DNACJ222S_Reg_69	Resync trigger to Controller from DNAC after upgrade the software image in controller.	To check whether Controller is reloaded when triggering from DNAC after upgrade the software image in controller.	Passed	
DNACJ222S_Reg_70	Upgrade the wrong software image into the Controller from DNAC	To verify whether the error message will display when trying to upgrade wrong software image into the Controller from DNAC	Passed	
DNACJ222S_Reg_71	AP joining status to Controller after upgrade the software image	To check whether the joined Aps upgraded with controller image	Passed	

DNACJ222S_Reg_72	Verify the client connectivity status to Controller after upgrade the software image	To check whether the Client associate with controller	Passed	
DNACJ222S_Reg_73	Upgrading the software image into existing group of AP	To check whether the software image is upgraded into existing group of AP	Passed	
DNACJ222S_Reg_74	Import the image to image repository using HTTP	To check whether the WLC is upgraded using TFTP from PI	Passed	
DNACJ222S_Reg_75	Import the image to image repository using FTP	To check whether the WLC is upgraded using FTP from PI	Passed	

RSSI and SNR in ASSOC request

Logical ID	Title	Description	Status	Defect ID
DNACJ222S_Reg_120	Adding eWLC to DNAC and connecting clients	To verify SNR and RSS values in DNA center after connecting client	Passed	
DNACJ222S_Reg_121	Connecting client to AP flex connect mode ,authentication as open and verifying SNR and RSS details	To verify SNR and RSS connectivity in DNA centre with AP mode flex connect and authentication as open	Passed	
DNACJ222S_Reg_122	Connecting client to AP flex connect mode ,authentication as PSK and verifying SNR and RSS details	To verify SNR and RSS connectivity in DNA centre with AP mode flex connect and authentication as PSK	Passed	

DNACJ222S_Reg_123	Connecting client to AP flex connect mode ,authentication as dot11 and verifying SNR and RSS details	To verify SNR and RSS connectivity in DNA centre with AP mode flex connect and authentication as dot11	Passed	
DNACJ222S_Reg_124	verifying SNR and RSS details after connecting client to AP flex mode as standalone ,authentication as open	To verify SNR and RSS connectivity in DNA centre with AP as Flex standalone and authentication as open	Passed	
DNACJ222S_Reg_125	verifying SNR and RSS details after connecting client to AP flex mode as standalone ,authentication as PSK	To verify SNR and RSS connectivity in DNA centre with AP as Flex standalone and authentication as PSK	Passed	
DNACJ222S_Reg_126	verifying SNR and RSS details after connecting client to AP flex mode as standalone ,authentication as dot11	To verify SNR and RSS connectivity in DNA centre with AP as Flex standalone and authentication as dot11	Passed	
DNACJ222S_Reg_127	Connecting client to AP local ,authentication as dot11 and verifying SNR and RSS details	To verify SNR and RSS connectivity in DNA centre with AP mode as local and authentication as dot11	Passed	
DNACJ222S_Reg_128	Connecting client to AP mode as local verifying SNR and RSS details	To verify SNR and RSS connectivity in DNA centre with AP mode as local	Passed	
DNACJ222S_Reg_129	Connecting client to AP mode as bridge ,authentication as dot11 and verifying SNR and RSS details	To verify SNR and RSS connectivity in DNA centre with AP mode as bridge	Passed	

DNACJ222S_Reg_130	Checking the SNR and RSS values after performing intra roaming in eWLC	To verify SNR and RSS connectivity in DNA centre after doing intra roaming in WLC	Passed	
DNACJ222S_Reg_131	Roaming client from 9115 & 9120 Aps and checking the SNR and RSS values	To Check the SNR and RSS values when client roam between 3800 & 1815 Aps	Passed	
DNACJ222S_Reg_132	Checking the SNR and RSS values after performing inter roaming in eWLC	To verify SNR and RSS connectivity in DNA centre after doing inter roaming in eWLC	Passed	
DNACJ222S_Reg_133	Checking the SNR and RSS values after performing FT roaming in eWLC	To verify SNR and RSS connectivity in DNA centre after doing FT roaming in eeWLC	Passed	
DNACJ222S_Reg_134	Verifying the AID values in client after connecting client	To check whether client getting AID value or not	Passed	

RSSI and SNR in ASSOC request

Logical ID	Title	Description	Status	Defect ID
DNACJ222S_Reg_120	Adding eWLC to DNAC and connecting clients	To verify SNR and RSS values in DNA center after connecting client	Passed	
DNACJ222S_Reg_121	Connecting client to AP flex connect mode ,authentication as open and verifying SNR and RSS details	To verify SNR and RSS connectivity in DNA centre with AP mode flex connect and authentication as open	Passed	
DNACJ222S_Reg_122	Connecting client to AP flex connect mode ,authentication as PSK and verifying SNR and RSS details	To verify SNR and RSS connectivity in DNA centre with AP mode flex connect and authentication as PSK	Passed	

DNACJ222S_Reg_123	Connecting client to AP flex connect mode ,authentication as dot11 and verifying SNR and RSS details	To verify SNR and RSS connectivity in DNA centre with AP mode flex connect and authentication as dot11	Passed	
DNACJ222S_Reg_124	verifying SNR and RSS details after connecting client to AP flex mode as standalone ,authentication as open	To verify SNR and RSS connectivity in DNA centre with AP as Flex standalone and authentication as open	Passed	
DNACJ222S_Reg_125	verifying SNR and RSS details after connecting client to AP flex mode as standalone ,authentication as PSK	To verify SNR and RSS connectivity in DNA centre with AP as Flex standalone and authentication as PSK	Passed	
DNACJ222S_Reg_126	verifying SNR and RSS details after connecting client to AP flex mode as standalone ,authentication as dot11	To verify SNR and RSS connectivity in DNA centre with AP as Flex standalone and authentication as dot11	Passed	
DNACJ222S_Reg_127	Connecting client to AP local ,authentication as dot11 and verifying SNR and RSS details	To verify SNR and RSS connectivity in DNA centre with AP mode as local and authentication as dot11	Passed	
DNACJ222S_Reg_128	Connecting client to AP mode as local verifying SNR and RSS details	To verify SNR and RSS connectivity in DNA centre with AP mode as local	Passed	
DNACJ222S_Reg_129	Connecting client to AP mode as bridge ,authentication as dot11 and verifying SNR and RSS details	To verify SNR and RSS connectivity in DNA centre with AP mode as bridge	Passed	

DNACJ222S_Reg_130	Checking the SNR and RSS values after performing intra roaming in eWLC	To verify SNR and RSS connectivity in DNA centre after doing intra roaming in WLC	Passed	
DNACJ222S_Reg_131	Roaming client from 9115 & 9120 Aps and checking the SNR and RSS values	To Check the SNR and RSS values when client roam between 3800 & 1815 Aps	Passed	
DNACJ222S_Reg_132	Checking the SNR and RSS values after performing inter roaming in eWLC	To verify SNR and RSS connectivity in DNA centre after doing inter roaming in eWLC	Passed	
DNACJ222S_Reg_133	Checking the SNR and RSS values after performing FT roaming in eWLC	To verify SNR and RSS connectivity in DNA centre after doing FT roaming in eeWLC	Passed	
DNACJ222S_Reg_134	Verifying the AID values in client after connecting client	To check whether client getting AID value or not	Passed	

Samsung Device Support

Logical ID	Title	Description	Status	Defect ID
DNACJ222S_Reg_155	Configuring DNAC with Network devices, access points.	To configure DNAC with Network devices, access points.	Passed	
DNACJ222S_Reg_156	Connect client and check client 360 dashboard details.	To connect client and check client 360 dashboard details.	Passed	
DNACJ222S_Reg_157	Connect Samsung client and check if client details are shown in Client 360 dashboard	To connect Samsung client and check if client details are shown in Client 360 dashboard	Passed	
DNACJ222S_Reg_158	Check more details of associated Samsung client	To check more details of associated Samsung client	Passed	

DNACJ222S_Reg_159	Connect Samsung client with AP in Flex mode	To connect Samsung client with AP in Flex mode	Passed	
DNACJ222S_Reg_160	Connect Samsung client with WPA2 PSK security	To connect Samsung client with WPA2 PSK security	Passed	
DNACJ222S_Reg_161	Connect Samsung client with WPA3 security	To connect Samsung client with WPA3 security	Passed	
DNACJ222S_Reg_162	Monitor client stats in client 360 dashboard.	To monitor client stats in client 360 dashboard.	Passed	
DNACJ222S_Reg_163	Disconnect Samsung client and check details in client 360 dashboard.	To disconnect client and check details in client 360 dashboard.	Passed	
DNACJ222S_Reg_164	Check Samsung client details in Client Summary report	Check Samsung client details in Client Summary report	Passed	
DNACJ222S_Reg_165	Check Samsung client details in Client Session report	Check Samsung client details in Client Session report	Passed	
DNACJ222S_Reg_166	Check Samsung client details in Client Detail report	Check Samsung client details in Client Detail report	Passed	
DNACJ222S_Reg_167	Check Samsung client details in Client Trend report	Check Samsung client details in Client Trend report	Passed	

Smart Licencing

Logical ID	Title	Description	Status	Defect ID
DNACJ222S_Reg_209	Configuring Smart account in DNAC via UI	To Configuring Smart account in DNAC via UI and check if the Profile is created or not	Passed	

DNACJ222S_Reg_210	Configuring Smart account in DNAC via UI with wrong credentials.	To Configuring Smart account in DNAC via UI with wrong credentials and verify it giving proper error messages .	Passed	
DNACJ222S_Reg_211	Verify able to fetch the satellite name	To Verify able to fetch the satellite name correctly with out any issues.	Passed	
DNACJ222S_Reg_212	Verify able to show proper error message for smart account adding.	To Verify able to show proper error message for smart account adding.	Passed	
DNACJ222S_Reg_213	Verify SSM Connection Mode :Direct	To Verify SSM Connection Mode :Direct	Passed	
DNACJ222S_Reg_214	Verify SSM Connection Mode: On-Prem CSSM :	To Verify SSM Connection Mode: On-Prem CSSM :	Passed	
DNACJ222S_Reg_215	Verify SSM Connection Mode: proxy	To Verify SSM Connection Mode: proxy:	Passed	
DNACJ222S_Reg_216	Verify SSM Connection Mode :Direct with 9800-40 model controller.	To Verify SSM Connection Mode :Direct with 9800-40 model controller.	Passed	
DNACJ222S_Reg_217	Verify SSM Connection Mode :Direct with 9800-80 model controller.	To Verify SSM Connection Mode :Direct with 9800-80 model controller.	Passed	
DNACJ222S_Reg_218	Verify SSM Connection Mode :Direct with 9800-L model controller.	To Verify SSM Connection Mode :Direct with 9800-L model controller.	Passed	
DNACJ222S_Reg_219	Verify SSM Connection Mode :On-Prime CSSM with 9800-40 model controller.	To Verify SSM Connection Mode :Direct with 9800-40 model controller.	Passed	

DNACJ222S_Reg_220	Verify SSM Connection Mode :On-Prime CSSM with 9800-80 model controller.	To Verify SSM Connection Mode :Direct with 9800-80 model controller.	Passed	
DNACJ222S_Reg_221	Verify SSM Connection Mode :On-Prime CSSM with 9800-L model controller.	To Verify SSM Connection Mode :Direct with 9800-L model controller.	Passed	

SWIM

Logical ID	Title	Description	Status	Defect ID
DNACJ222S_Reg_41	Importing a image from a device	To check if the images gets imported from the device or not	Passed	
DNACJ222S_Reg_42	Importing the image through the URL	To import the image using URL and check if the images gets imported or not.	Passed	
DNACJ222S_Reg_43	Import the Invalid image from a device	To import the wrong image using device and check if the images gets imported or not.	Passed	
DNACJ222S_Reg_44	Mark multiple image as golden image and verify which image upgraded with controller.	To Mark multiple image as golden image and validate controller upgraded or not	Passed	
DNACJ222S_Reg_45	Schedule the time for controller upgrade	To Scheduling the time for controller and check the controller upgraded with given time or not	Passed	
DNACJ222S_Reg_46	Scheduling the time as "NOW" to upgrade the controller image	To Scheduling the time as "NOW" for controller and check the controller upgraded or not	Passed	

DNACJ222S_Reg_47	Distributing the image to different devices .	To distribute different images and check if the devices selected	Passed	
DNACJ222S_Reg_48	Associate the client with controller after upgraded	To distribute different images and check if the devices selected	Passed	
DNACJ222S_Reg_49	Generate SWIM report	To generate SWIM report and verify the details correct or not	Passed	

Top N Summary

Logical ID	Title	Description	Status	Defect ID
DNACJ222S_Reg_296	Configuring DNAC with Network devices, clients, access points.	To configure DNAC with Network devices, clients, access points.	Passed	
DNACJ222S_Reg_297	Report generation using template	To do report generation using template	Passed	
DNACJ222S_Reg_298	Validate details in generated report	To validate details in generated report	Passed	
DNACJ222S_Reg_299	Adding multiple locations during report generation.	To add multiple locations during report generation.	Passed	
DNACJ222S_Reg_300	Verify client details in generated report.	To verify client details in generated report.	Passed	
DNACJ222S_Reg_301	Connect Android client and check if it is shown in the generated report.	To connect Android client and check if it is shown in the generated report.	Passed	
DNACJ222S_Reg_302	Connect iPhone client and check if it is shown in the generated report.	To connect iPhone client and check if it is shown in the generated report.	Passed	
DNACJ222S_Reg_303	Connect Mac client and check if it is shown in the generated report.	To connect Mac client and check if it is shown in the generated report.	Passed	

DNACJ222S_Reg_304	Check details of connected clients to 2.4Ghz & 5Ghz bands.	To check details of connected clients to 2.4Ghz & 5Ghz bands.	Passed	
DNACJ222S_Reg_305	Check device details with bad health in generated report.	To check device details with bad health in generated report.	Passed	
DNACJ222S_Reg_306	Check if device inventory is updated in report with addition of network devices/clients.	To check if device inventory is updated in report with addition of network devices/clients.	Passed	
DNACJ222S_Reg_307	Generate report with different time range values.	To generate report with different time range values.	Passed	
DNACJ222S_Reg_308	Generate report with different custom time range values.	To generate report with different custom time range values.	Passed	
DNACJ222S_Reg_309	Schedule report generation using template	To schedule report generation using template	Passed	
DNACJ222S_Reg_310	Schedule recurring report generation using template	To schedule recurring report generation using template	Passed	
DNACJ222S_Reg_311	Email report option during report generation	To check Email report option during report generation	Passed	
DNACJ222S_Reg_312	Webhook notification during report generation	To check webhook notification during report generation	Passed	
DNACJ222S_Reg_313	Edit config of generated report template	To edit config of generated report template	Passed	
DNACJ222S_Reg_314	Duplicate report option using existing report	To duplicate report option using existing report	Passed	
DNACJ222S_Reg_315	Trigger report generation using Run now option	To trigger report generation using Run now option	Passed	
DNACJ222S_Reg_316	Delete report using delete option under action tab	To delete report using delete option under action tab	Passed	

Config Wireless

Logical ID	Title	Description	Status	Defect ID
DNACJ2221S_config_2	Code values displayed on system settings high availability page	To validate Code values displayed on system settings high availability page	Passed	CSCvw89634
DNACJ2221S_config_3	Command Add button is not working in Tools->Command Runner Page	To check add button working in command runner page	Passed	CSCvw94976



CHAPTER 5

Related Documents

- [Related Documentation](#), on page 61

Related Documentation

CME 8.10 release Notes

https://www.cisco.com/c/en/us/td/docs/wireless/access_point/mob_exp/810/release_notes/b_ME_RN_810.html

WLC 8.10 Configuration Guide

https://www.cisco.com/c/en/us/td/docs/wireless/controller/8-10/config-guide/b_cg810.html

CMX 10.6 Configuration Guide

https://www.cisco.com/c/en/us/td/docs/wireless/mse/10-6/cmx_config/b_cg_cmx106/getting_started_with_cisco_cmx.html

PI 3.9 User Guide

<https://www.cisco.com/c/en/us/support/cloud-systems-management/prime-infrastructure-3-8/model.html>

ISE 3.0 Release Notes

https://www.cisco.com/c/en/us/td/docs/security/ise/3-0/release_notes/b_ise_30_rn.html

Cisco Catalyst 9800 Series Wireless Controller Software Configuration Guide

https://www.cisco.com/c/en/us/td/docs/wireless/controller/9800/17-4/config-guide/b_wl_17_4_cg.html

Cisco Catalyst 9800 Series Wireless Controller 17.4 Configuration Guide

https://www.cisco.com/c/en/us/td/docs/wireless/controller/9800/17-4/config-guide/b_wl_17_4_cg.html

Cisco Catalyst 9800 Series Wireless Controller 17.4 Release Notes

<https://www.cisco.com/c/en/us/td/docs/wireless/controller/9800/17-4/release-notes/rn-17-4-9800.html>

Release Notes for Cisco Digital Network Architecture Spaces

<https://www.cisco.com/c/en/us/td/docs/wireless/cisco-dna-spaces/release-notes/cisco-dnaspaces-dec20.html>

Cisco Catalyst 9600 Series Switches 17.4 Release Notes

https://www.cisco.com/c/en/us/td/docs/switches/lan/catalyst9600/software/release/17-4/release_notes/ol-17-4-9600.html

Release Notes Cisco Digital Network Architecture Center

https://www.cisco.com/c/en/us/td/docs/cloud-systems-management/network-automation-and-management/dna-center/2-1-2/release_notes/b_cisco_dna_center_rn_2_1_2.html