



Test Results Summary for Cisco DNA Center Automation & Assurance (Release Version 2.2.1)

First Published: 2020-10-21

Last Modified: 2020-10-22

Americas Headquarters

Cisco Systems, Inc.
170 West Tasman Drive
San Jose, CA 95134-1706
USA
<http://www.cisco.com>
Tel: 408 526-4000
800 553-NETS (6387)
Fax: 408 527-0883



CONTENTS

CHAPTER 1	Overview	1
	Cisco DNA Center Automation & Assurance test	1

CHAPTER 2	Test Topology and Environment Matrix	7
	Test Topology	7
	Component Matrix	8
	What's New ?	10
	Open Caveats	11
	Resolved Caveats	11

CHAPTER 3	New Features	13
	Smart Licensing	13
	All data report - Inventory and SWIM	14
	Channel change count report	16
	Client Summary Report	18
	Network device availability report	19
	Top N summary report	21

CHAPTER 4	Regression Features - Test Summary	25
	Overall & Network Health Dashboard	26
	Client and Application Health Dashboard	29
	Predefined Report	31
	Wireless Sensor Dashboard	32
	Client 360° & Device 360°	33
	SWIM	34
	PnP	35

New AP Support 37

Cisco Catalyst 9800-L Wireless Controller Support 38

Rolling AP upgrade 41

Mobility configuration 42

Guest web passthrough 44

CMX Support 45

DNA Spaces Support 46

DNAC support for eWLC 47

RSSI and SNR in ASSOC request 49

DNAC Support for eWC 51

Inventory 53

DNAC Co-existence Tools 56

Samsung Device Support 58

AP Upgrade Flow 59

AP RMA 61

Basic Reporting for Rogue 63

Assurance workflow changes to support Device RMA 64

Assurance workflow changes to support AP Refresh 64

Client Sessions Report 65

Executive Summary Report - Phase 2 68

Client Trend Report 69

Client Detail Report 71

AP detail Report 74

Support for Cisco Embedded Wireless Controller 75

New AP Support(ICAP) 78

Config Wireless 80

CHAPTER 5

Related Documentation 81

Related Documentation 81



CHAPTER 1

Overview

- [Cisco DNA Center Automation & Assurance test](#) , on page 1

Cisco DNA Center Automation & Assurance test

Cisco DNA Center Automation & Assurance test , an integral part of the enterprise wireless solution, is a program that validates various Cisco Wireless Products and Features. This is achieved by testing the latest versions of Cisco wireless products

Cisco DNA Center Automation & Assurance for Japan , in turn is an add-on testing at the solution level, where the requirements gathered are specific to Japanese usage and market. The requirements are derived based on the following:

- New features in Cisco DNA Center Automation & Assurance Test 2.2.1
- High priority scenarios and basic regression features
- Inputs from Cisco SEs/ TAC

The test execution is carried out on selected Cisco Wireless LAN products, which affect the Japanese segment that are prioritized by Cisco Japan team.

The following products are covered in the test execution:

- Cisco DNA Center Automation & Assurance
- Cisco Catalyst 9800 Series Wireless Controller
- Cisco Virtual Elastic Wireless LAN Controller 9800
- Cisco Catalyst 9800-CL
- Cisco Embedded Wireless Controller on Catalyst Access Points
- Cisco DNA Spaces
- Cisco DNA Connector
- Cisco Wireless LAN Controller 8540
- Cisco Wireless LAN Controller 5520
- Cisco Wireless LAN Controller 3504

- Cisco Mobility Express 1850
- Cisco Mobility Express 1830
- Cisco Mobility Express 1815I
- Cisco Mobility Express 2800
- Cisco Mobility Express 3800
- Cisco Mobility Express 4800
- Cisco Mobility Express 1562
- APIC-EM Controller appliance
- Connected Mobile Experiences (CMX)
- Cisco Prime Infrastructure (Physical-UCS,VM)
- ISE(VM)
- Cisco ISR 1100
- Cisco AP c9115
- Cisco AP c9120
- Cisco AP c9130
- Autonomous AP
- Access Point 4800
- Access Point 3800
- Access Point 2800
- Access Point 3700
- Access Point 2700
- Access Point 1700
- Access Point 1570
- Access Point 1542
- Access Point 1530
- Access Point 702I
- Access Point 1850
- Access Point 1830
- Access Point 1815I
- Access Point 1815W
- Access Point 1810

Acronyms

Acronym	Description
AAA	Authentication Authorization and Accounting
ACL	Access Control List
ACS	Access Control Server
AKM	Authentication Key Management
AP	Access Point
API	Application Programming Interface
APIC-EM	Application Policy Infrastructure Controller - Enterprise Module
ATF	Air-Time Fairness
AVC	Application Visibility and Control.
BGN	Bridge Group Network
BLE	Bluetooth Low Energy
BYOD	Bring Your Own Device
CA	Central Authentication
CAC	Call Admissions Control
CAPWAP	Control and Provisioning of Wireless Access Point
CCKM	Cisco Centralized Key Management
CCN	Channel Change Notification
CCX	Cisco Compatible Extensions
CDP	Cisco Discovery Protocol
CKIP	Cisco Key Integrity Protocol
CMX	Connected Mobile Experience
CVBF	Cisco Vector Beam Forming
CWA	Central Web Authentication
DCA	Dynamic Channel Assignment
DMZ	Demilitarized Zone
DNS	Domain Name System
DNA-C	Digital Network Architecture Center
DTIM	Delivery Traffic Indication Map
DSCP	Differentiated Services Code Point
DTLS	Datagram Transport Layer Security
EAP	Extensible Authentication Protocol

Acronym	Description
EULA	End User Licence Agreement
EWC	Embedded Wireless Controller
FLA	Flex Local Authentication
FLS	Flex Local Switching
FT	Fast Transition
FTP	File Transfer Protocol
FW	Firm Ware
HA	High Availability
H-REAP	Hybrid Remote Edge Access Point
IOS	Internetwork Operating System
ISE	Identity Service Engine
ISR	Integrated Services Router
LAG	Link Aggregation
LEAP	Lightweight Extensible Authentication Protocol
LSS	Location Specific Services
LWAPP	Lightweight Access Point Protocol
MAP	Mesh Access Point
MCS	Modulation Coding Scheme
MFP	Management Frame Protection
mDNS	multicast Domain Name System
MIC	Message Integrity Check
MSE	Mobility Service Engine
MTU	Maximum Transmission Unit
NAC	Network Admission Control
NAT	Network Address Translation
NBAR	Network Based Application Recognition
NCS	Network Control System
NGWC	Next Generation Wiring closet
NMSP	Network Mobility Services Protocol
OEAP	Office Extended Access Point
PEAP	Protected Extensible Authentication Protocol
PEM	Policy Enforcement Module

Acronym	Description
PI	Prime Infrastructure
PMF	Protected Management Frame
POI	Point of Interest
PPPoE	Point-to-Point Protocol over Ethernet
PSK	Pre-shared Key
QOS	Quality of service
RADIUS	Remote Authentication Dial-In User Service
RAP	Root Access Point
RP	Redundancy Port
RRM	Radio Resource Management
SDN	Software Defined Networking
SOAP	Simple Object Access Protocol
SFTP	Secure File Transfer Protocol
SNMP	Simple Network Management Protocol
SS	Spatial Stream
SSID	Service Set Identifier
SSO	Single Sign On
SSO	Stateful Switch Over
SWIM	Software Image Management
TACACS	Terminal Access Controller Access Control System
TCP	Transmission Control Protocol
TFTP	Trivial File Transfer Protocol
TLS	Transport Layer Security
UDP	User Datagram Protocol
vWLC	Virtual Wireless LAN Controller
VPC	Virtual port channel
VPN	Virtual Private Network
WEP	Wired Equivalent Privacy
WGB	Workgroup Bridge
wIPS	Wireless Intrusion Prevention System
WLAN	Wireless LAN
WLC	Wireless LAN Controller

Acronym	Description
WPA	Wi-Fi Protected Access
WSM	Wireless Security Module

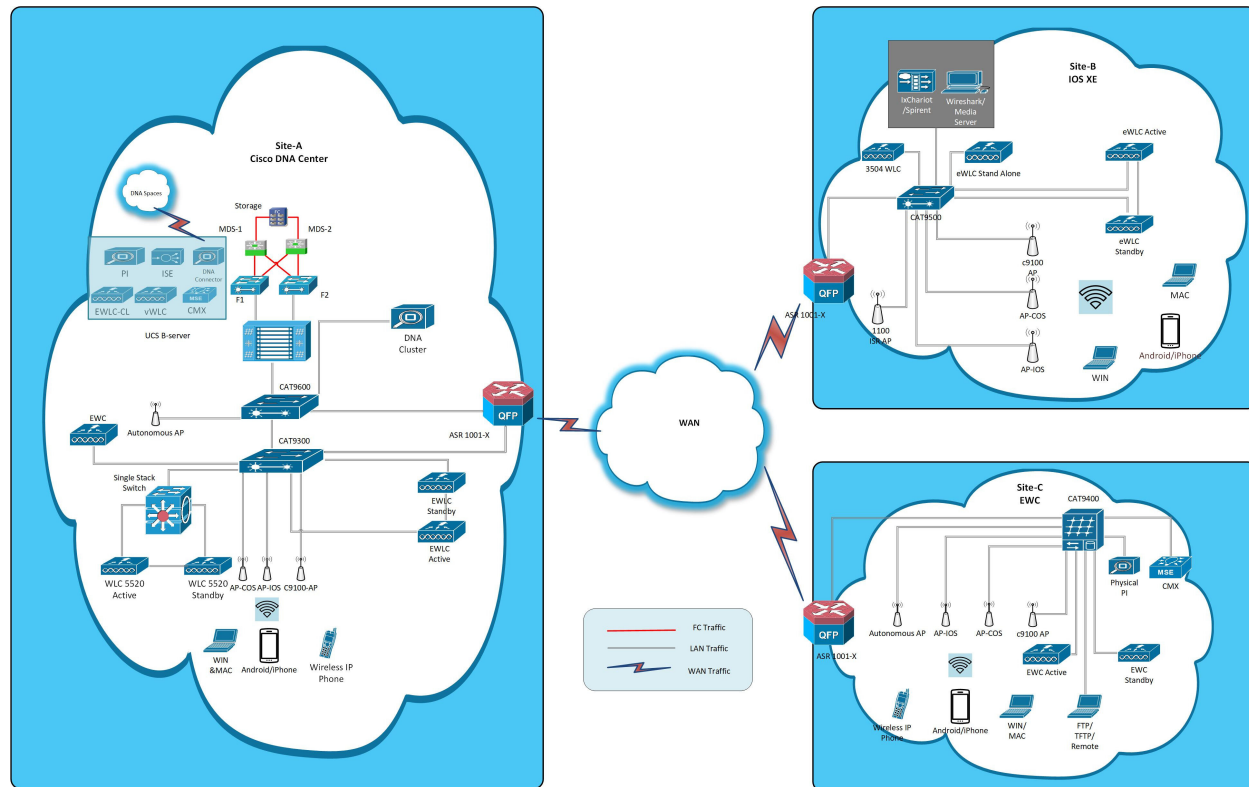


CHAPTER 2

Test Topology and Environment Matrix

- Test Topology, on page 7
- Component Matrix, on page 8
- What's New ?, on page 10
- Open Caveats, on page 11
- Resolved Caveats, on page 11

Test Topology



Component Matrix

Category	Component	Version
Controller	Cisco Elastic Wireless LAN Controller 9800	17.4
	Cisco Virtual Elastic Wireless LAN Controller 9800	17.4
	Cisco Catalyst 9800-L Wireless Controller	17.4
	Cisco Embedded Wireless Controller on Catalyst Access Points	17.4
	Wireless LAN Controller 8540	8.10.105.0
	Wireless LAN controller 5520	8.10.105.0
	Wireless LAN controller 3504	8.10.105.0
	Virtual Controller	8.10.105.0
	CME 1562/1850/1830	8.10.105.0
	CME 4800/3800/2800	8.10.105.0
Applications	Cisco DNA Center	2.2.1
	DNA Spaces	Cloud(July 2020)
	DNA spaces connector	2.2.295
	ISE(VM)	3.0
	CMX(Physical (3375), VM)	10.6
	Prime Infrastructure (Virtual Appliance, UCS based)	3.9.0.0
	MSE(Physical (3365), VM)	8.0.150.0
	APIC-EM Controller appliance	1.6
	Cisco Jabber for Windows, iPhone	12.6.0
	Cisco Air Provisioning App	1.4
	Cisco Wireless App	1.0.228

Category	Component	Version
Access Point	Cisco AP 9115	17.4
	Cisco AP 9120	17.4
	Cisco AP 9130	17.4
	Cisco 1100 ISR	17.4
	Cisco AP 4800	15.3
	Cisco AP 3800	15.3
	Cisco AP 2800	15.3
	Cisco AP 3700	15.3
	Cisco AP 2700	15.3
	Cisco AP 1700	15.3
	Cisco AP 1850	15.3
	Cisco AP 1830	15.3
	Cisco AP 1815	15.3
	Cisco AP 1810	15.3
	Cisco AP 1570	15.3
	Cisco AP 1562	15.3
Cisco AP 1542	15.3	
Cisco AP 1532	15.3	
Cisco AP 702I	15.3	
Switch	Cisco Cat 9300	17.4
	Cisco Cat 9200L	17.4
	Cisco Cat 9600	17.4
	Cisco 3750V2 switch	15.0(2)SE2
	Cisco Cat 6509-E	15.1(1)SY1
Chipset	5300, 6300 AGN	15.40.41.5058
	7265 AC	20.120.0
	Airport Extreme	7.9.1

Category	Component	Version
Client	Operating System(JOS)	Windows 8 & 8.1 Enterprise
		Windows XP Professional
		Windows 10
	Apple Mac Book Pro, Apple Mac Book Air (JP Locale)	Mac OS 11.0
	iPad Pro	iOS 13.7
	iPhone 6, 6S ,7 & 11 (JP Locale)	iOS 13.7
	Samsung Galaxy S7,S10, Nexus 6P, Sony Xperia XZ	Android 10.0
	Wireless IP Phone 8821	11.0.4-14
	End points	Windows 7 Enterprise
		Apple Mac 10.15
		Windows 8 & 8.1
		iPhone 6,6S ,7 & 11
		Windows 10
Samsung Galaxy S4, S7,S10, Nexus 6P, Sony Xperia		
Cisco AnyConnect VPN Client	4.8.175	
Module	Hyper location Module	NA
Active Directory	AD	Windows server 2019-object version:87
Call Control	Cisco Unified Communications Manager	12.5.0.99832-3/12.5.0.99832-3-1(JP)
Browsers	IE	11.0.180
	Mozilla Firefox	82.0
	Safari	13.0.1
	Chrome	86.0

What's New ?

Cisco DNA Center

- Smart Licensing
- All data report - Inventory and SWIM
- Channel change count report
- Client summary report

- Client summary report
- Network device availability report
- Top N summary report

Open Caveats

Defect ID	Title
CSCvv37718	JIRA Bug: DNACNDP-8108 -- Inventory devices are not shown across DNAC dashboards
CSCvw00002	DNAC Smart licensing not allowing to register EWLC 17.4 & 17.5 fails with version not >= 17.3.2
CSCvv91230	Wrong data is showing in Client Onboarding Times in DNAC.
CSCvv85936	Device Type not showing under Wireless profile in Japanese locale
CSCvv59397	Unable to create WPA3 Enterprise & Personal mode in Japanese GUI
CSCvv98912	Unable to configure Traffic policies
CSCvw06424	Creating network policy-VLAN is chosen as "management" but there is no VLAN ID is mapped internally
CSCvv93292	Observed UI issues in Assurance Issues dashboard
CSCvv59360	Text needs to be add in Traffic policies tab("Add contract")
CSCvv39468	Exit Confirm buttons not arranged properly in Report generation page(Workflow exit modal) in Japanes
CSCvv92691	"PKI-3-CRL_FETCH_FAIL" message continuously received while DNAC Upgradation
CSCvv59301	Unable to cancel the process while importing the image in image repository
CSCvv90798	Update failed tooltip - tooltip data needs to be shown in Japanese for Japanese locale
CSCvv84299	Tasks not accessible from syslog popup in Japanese locale

Resolved Caveats

Defect ID	Title
-----------	-------

Resolved Caveats

CSCvv50061	Multiple scrollbars are visible on Report Templates page
CSCvv50033	Unhealthy Services popup - Difference observed between Japanese and English locales
CSCvv60859	Unable to apply filter based on site field
CSCvv60738	Table Content need to scroll along with column title while using Horizontal scroll bar
CSCvv36529	While Generating any Report not taken the automatic name in Japanese UI
CSCvv83905	Wide area bonjour - Font styling issue observed in header navigation menu



CHAPTER 3

New Features

- [Smart Licensing, on page 13](#)
- [All data report - Inventory and SWIM, on page 14](#)
- [Channel change count report, on page 16](#)
- [Client Summary Report, on page 18](#)
- [Network device availability report, on page 19](#)
- [Top N summary report, on page 21](#)

Smart Licensing

Logical ID	Title	Description	Status	Defect ID
DNACJ21S_SMA_01	Configuring Smart account in DNAC via UI	To Configuring Smart account in DNAC via UI and check if the Profile is created or not	Passed	
DNACJ21S_SMA_02	Configuring Smart account in DNAC via UI with wrong credentials.	To Configuring Smart account in DNAC via UI with wrong credentials and verify it giving proper error messages .	Passed	
DNACJ21S_SMA_03	Verify able to fetch the satilite name	To Verify able to fetch the satilite name correctly with out any issues.	Passed	
DNACJ21S_SMA_04	Verify able to show proper error message for smart account adding.	To Verify able to show proper error message for smart account adding.	Passed	
DNACJ21S_SMA_05	Verify SSM Connection Mode :Direct	To Verify SSM Connection Mode :Direct	Passed	

DNACJ21S_SMA_06	Verify SSM Connection Mode:On-Prem CSSM :	To Verify SSM Connection Mode:On-Prem CSSM :	Passed	
DNACJ21S_SMA_07	Verify SSM Connection Mode: proxy	To Verify SSM Connection Mode: proxy:	Passed	
DNACJ21S_SMA_08	Verify SSM Connection Mode :Direct with 9800-40 model controller.	To Verify SSM Connection Mode :Direct with 9800-40 model controller.	Passed	
DNACJ21S_SMA_09	Verify SSM Connection Mode :Direct with 9800-80 model controller.	To Verify SSM Connection Mode :Direct with 9800-80 model controller.	Passed	
DNACJ21S_SMA_10	Verify SSM Connection Mode :Direct with 9800-L model controller.	To Verify SSM Connection Mode :Direct with 9800-L model controller.	Passed	
DNACJ21S_SMA_11	Verify SSM Connection Mode :On-Prime CSSM with 9800-40 model controller.	To Verify SSM Connection Mode :Direct with 9800-40 model controller.	Passed	
DNACJ21S_SMA_12	Verify SSM Connection Mode :On-Prime CSSM with 9800-80 model controller.	To Verify SSM Connection Mode :Direct with 9800-80 model controller.	Passed	
DNACJ21S_SMA_13	Verify SSM Connection Mode :On-Prime CSSM with 9800-L model controller.	To Verify SSM Connection Mode :Direct with 9800-L model controller.	Passed	

All data report - Inventory and SWIM

Logical ID	Title	Description	Status	Defect ID
DNACJ21S_ALL_01	Generate the Inventory report as PDF format	To Check the report generated as PDF format or not	Passed	

DNACJ21S_ALL_02	Generate the Inventory report as CSV format	To Check the report generated as CSV format or not	Passed	
DNACJ21S_ALL_03	Generate the Inventory report as TDE format	To Check the report generated as TDE format or not	Passed	
DNACJ21S_ALL_04	Generate the Inventory report with schedule time as now	To Check the report generated in schedule now time	Passed	
DNACJ21S_ALL_05	Generate the Inventory report with schedule time as Run later	To Check the report generated in schedule later time	Passed	
DNACJ21S_ALL_06	Generate the Inventory report with schedule time as Run Recurring option	To Check the report generated in schedule recurring time	Passed	
DNACJ21S_ALL_07	Generate the Inventory report with email notification	To Verify the notification generated or not with valid report details	Passed	
DNACJ21S_ALL_08	Generate the Inventory report with webbook notification	To Verify the notification generated or not with valid report details	Passed	
DNACJ21S_ALL_09	Generate the Inventory report after deleted all the devices in DNAC	To validate the report details shown or not after deleted the device in DNAC	Passed	
DNACJ21S_ALL_10	Generate the SWIM report as PDF format	To Check the report generated as PDF format or not	Passed	
DNACJ21S_ALL_11	Generate the SWIM report as CSV format	To Check the report generated as CSV format or not	Passed	
DNACJ21S_ALL_12	Generate the SWIM report as TDE format	To Check the report generated as TDE format or not	Passed	
DNACJ21S_ALL_13	Generate the SWIM report with schedule time as now	To Check the report generated in schedule now time	Passed	

DNACJ21S_ALL_14	Generate the SWIM report with schedule time as Run later	To Check the report generated in schedule later time	Passed	
DNACJ21S_ALL_15	Generate the SWIM report with schedule time as Run Recurring option	To Check the report generated in schedule recurring time	Passed	
DNACJ21S_ALL_16	Generate the SWIM report with email notification	To Verify the notification generated or not with valid report details	Passed	
DNACJ21S_ALL_17	Generate the SWIM report with webbook notification	To Verify the notification generated or not with valid report details	Passed	
DNACJ21S_ALL_18	Generate the SWIM report after deleted all the devices in DNAC	To validate the report details shown or not after deleted the device in DNAC	Passed	
DNACJ21S_ALL_19	Generate the SWIM report without performing SWIM operation	To validate the report details shown or not without performing the SWIM operation	Passed	
DNACJ21S_ALL_20	Create report in English UI and validate the details in Japanese UI	To check details are shown or not in Japanese UI	Failed	CSCvv50061

Channel change count report

Logical ID	Title	Description	Status	Defect ID
DNACJ21S_CHA_01	Generate the report as CSV format	To Check the report generated as CSV format or not	Passed	
DNACJ21S_CHA_02	Generate the report as TDE format	To Check the report generated as TDE format or not	Passed	
DNACJ21S_CHA_03	Generate the report as JSON format	To Check the report generated as JSON format or not	Failed	CSCvv39468

DNACJ21S_CHA_04	Generate the report with schedule time as now	To Check the report generated in schedule now time	Passed	
DNACJ21S_CHA_05	Generate the report with schedule time as Run later	To Check the report generated in schedule later time	Passed	
DNACJ21S_CHA_06	Generate the report with schedule time as Run Recurring option	To Check the report generated in schedule recurring time	Passed	
DNACJ21S_CHA_07	Generate the report with email notification	To Verify the notification generated or not with valid report details	Passed	
DNACJ21S_CHA_08	Generate the report with web hook notification	To Verify the notification generated or not with valid report details	Passed	
DNACJ21S_CHA_09	Generate the report after deleted all the devices in DNAC	To validate the report details shown or not after deleted the device in DNAC	Passed	
DNACJ21S_CHA_10	Generate the report for the last 3 hours	To Check the report generated with last 3 hours details	Passed	
DNACJ21S_CHA_11	Generate the report for the last 7 days	To Check the report generated with last 7 days details	Passed	
DNACJ21S_CHA_12	Generate the report for the 24 Hrs	To Check the report generated with last 24 hours details	Passed	
DNACJ21S_CHA_13	Generate the report for the one month	To Check the report generated with last 30 days details	Passed	
DNACJ21S_CHA_14	Generate the report for the custom date	To Check the report generated within custom date	Passed	
DNACJ21S_CHA_15	Rerun the report from the generated report page	To check the report able to rerun from the generated page	Passed	

Client Summary Report

Logical ID	Title	Description	Status	Defect ID
DNACJ21S_CLI_01	Configuring DNAC with Network devices, clients, access points.	To configure DNAC with Network devices, clients, access points.	Passed	
DNACJ21S_CLI_02	Report generation using template	To do report generation using template	Passed	
DNACJ21S_CLI_03	Validate details in generated report	To validate details in generated report	Passed	
DNACJ21S_CLI_04	Adding multiple locations during report generation.	To add multiple locations during report generation.	Passed	
DNACJ21S_CLI_05	Verify client details in generated report.	To verify client details in generated report.	Passed	
DNACJ21S_CLI_06	Connect Android client and check if it is shown in the generated report.	To connect Android client and check if it is shown in the generated report.	Passed	
DNACJ21S_CLI_07	Connect iPhone client and check if it is shown in the generated report.	To connect iPhone client and check if it is shown in the generated report.	Passed	
DNACJ21S_CLI_08	Connect Mac client and check if it is shown in the generated report.	To connect Mac client and check if it is shown in the generated report.	Passed	
DNACJ21S_CLI_09	Check details of connected clients to 2.4Ghz & 5Ghz bands.	To check details of connected clients to 2.4Ghz & 5Ghz bands.	Passed	
DNACJ21S_CLI_10	Check device details with bad health in generated report.	To check device details with bad health in generated report.	Passed	
DNACJ21S_CLI_11	Check if device inventory is updated in report with addition of network devices/clients.	To check if device inventory is updated in report with addition of network devices/clients.	Passed	

DNACJ21S_CLI_12	Generate report with different time range values.	To generate report with different time range values.	Passed	
DNACJ21S_CLI_13	Generate report with different custom time range values.	To generate report with different custom time range values.	Passed	
DNACJ21S_CLI_14	Schedule report generation using template	To schedule report generation using template	Passed	
DNACJ21S_CLI_15	Schedule recurring report generation using template	To schedule recurring report generation using template	Passed	
DNACJ21S_CLI_16	Email report option during report generation	To check Email report option during report generation	Passed	
DNACJ21S_CLI_17	Web hook notification during report generation	To check web hook notification during report generation	Passed	
DNACJ21S_CLI_18	Edit config of generated report template	To edit config of generated report template	Passed	
DNACJ21S_CLI_19	Duplicate report option using existing report	To duplicate report option using existing report	Passed	
DNACJ21S_CLI_20	Trigger report generation using Run now option	To trigger report generation using Run now option	Passed	
DNACJ21S_CLI_21	Delete report using delete option under action tab	To delete report using delete option under action tab	Passed	

Network device availability report

Logical ID	Title	Description	Status	Defect ID
DNACJ21S_NET_01	Configuring DNAC with Network devices, clients, access points.	To configure DNAC with Network devices, clients, access points.	Failed	CSCvv37718
DNACJ21S_NET_02	Report generation using template	To do report generation using template	Passed	

DNACJ21S_NET_03	Validate details in generated report	To validate details in generated report	Passed	
DNACJ21S_NET_04	Adding multiple locations during report generation.	To add multiple locations during report generation.	Passed	
DNACJ21S_NET_05	Verify network device availability details in generated report.	To verify network device availability details in generated report.	Passed	
DNACJ21S_NET_06	Verify network device availability details for different device types in generated report.	To verify network device availability details for different device types in generated report.	Passed	
DNACJ21S_NET_07	Verify network device availability details in generated report after moving device to unreachable state.	To verify network device availability details in generated report after moving device to unreachable state.	Passed	
DNACJ21S_NET_08	Check if device inventory is updated in report with addition of network devices.	To check if device inventory is updated in report with addition of network devices.	Passed	
DNACJ21S_NET_09	Generate report with different time range values.	To generate report with different time range values.	Passed	
DNACJ21S_NET_10	Generate report with different custom time range values.	To generate report with different custom time range values.	Passed	
DNACJ21S_NET_11	Schedule report generation using template	To schedule report generation using template	Passed	
DNACJ21S_NET_12	Schedule recurring report generation using template	To schedule recurring report generation using template	Passed	
DNACJ21S_NET_13	Email report option during report generation	To check Email report option during report generation	Passed	
DNACJ21S_NET_14	Web hook notification during report generation	To check web hook notification during report generation	Passed	

DNACJ21S_NET_15	Edit config of generated report template	To edit config of generated report template	Passed	
DNACJ21S_NET_16	Duplicate report option using existing report	To duplicate report option using existing report	Passed	
DNACJ21S_NET_17	Trigger report generation using Run now option	To trigger report generation using Run now option	Passed	
DNACJ21S_NET_18	Delete report using delete option under action tab	To delete report using delete option under action tab	Passed	

Top N summary report

Logical ID	Title	Description	Status	Defect ID
DNACJ21S_TOPN_01	Configuring DNAC with Network devices, clients, access points.	To configure DNAC with Network devices, clients, access points.	Passed	
DNACJ21S_TOPN_02	Report generation using template	To do report generation using template	Passed	
DNACJ21S_TOPN_03	Validate details in generated report	To validate details in generated report	Passed	
DNACJ21S_TOPN_04	Adding multiple locations during report generation.	To add multiple locations during report generation.	Passed	
DNACJ21S_TOPN_05	Verify client details in generated report.	To verify client details in generated report.	Passed	
DNACJ21S_TOPN_06	Connect Android client and check if it is shown in the generated report.	To connect Android client and check if it is shown in the generated report.	Passed	
DNACJ21S_TOPN_07	Connect iPhone client and check if it is shown in the generated report.	To connect iPhone client and check if it is shown in the generated report.	Passed	

DNACJ21S_TOPN_08	Connect Mac client and check if it is shown in the generated report.	To connect Mac client and check if it is shown in the generated report.	Passed	
DNACJ21S_TOPN_09	Check details of connected clients to 2.4Ghz & 5Ghz bands.	To check details of connected clients to 2.4Ghz & 5Ghz bands.	Passed	
DNACJ21S_TOPN_10	Check device details with bad health in generated report.	To check device details with bad health in generated report.	Passed	
DNACJ21S_TOPN_11	Check if device inventory is updated in report with addition of network devices/clients.	To check if device inventory is updated in report with addition of network devices/clients.	Passed	
DNACJ21S_TOPN_12	Generate report with different time range values.	To generate report with different time range values.	Passed	
DNACJ21S_TOPN_13	Generate report with different custom time range values.	To generate report with different custom time range values.	Passed	
DNACJ21S_TOPN_14	Schedule report generation using template	To schedule report generation using template	Passed	
DNACJ21S_TOPN_15	Schedule recurring report generation using template	To schedule recurring report generation using template	Passed	
DNACJ21S_TOPN_16	Email report option during report generation	To check Email report option during report generation	Passed	
DNACJ21S_TOPN_17	Webhook notification during report generation	To check webhook notification during report generation	Passed	
DNACJ21S_TOPN_18	Edit config of generated report template	To edit config of generated report template	Passed	
DNACJ21S_TOPN_19	Duplicate report option using existing report	To duplicate report option using existing report	Passed	

DNACJ21S_TOPN_20	Trigger report generation using Run now option	To trigger report generation using Run now option	Passed	
DNACJ21S_TOPN_21	Delete report using delete option under action tab	To delete report using delete option under action tab	Passed	



CHAPTER 4

Regression Features - Test Summary

- Overall & Network Health Dashboard, on page 26
- Client and Application Health Dashboard, on page 29
- Predefined Report, on page 31
- Wireless Sensor Dashboard, on page 32
- Client 360° & Device 360°, on page 33
- SWIM, on page 34
- PnP, on page 35
- New AP Support, on page 37
- Cisco Catalyst 9800-L Wireless Controller Support, on page 38
- Rolling AP upgrade, on page 41
- Mobility configuration, on page 42
- Guest web passthrough, on page 44
- CMX Support, on page 45
- DNA Spaces Support, on page 46
- DNAC support for eWLC, on page 47
- RSSI and SNR in ASSOC request, on page 49
- DNAC Support for eWC, on page 51
- Inventory, on page 53
- DNAC Co-existence Tools, on page 56
- Samsung Device Support, on page 58
- AP Upgrade Flow, on page 59
- AP RMA, on page 61
- Basic Reporting for Rogue, on page 63
- Assurance workflow changes to support Device RMA, on page 64
- Assurance workflow changes to support AP Refresh, on page 64
- Client Sessions Report, on page 65
- Executive Summary Report - Phase 2, on page 68
- Client Trend Report, on page 69
- Client Detail Report, on page 71
- AP detail Report, on page 74
- Support for Cisco Embedded Wireless Controller, on page 75
- New AP Support(ICAP), on page 78
- Config Wireless, on page 80

Overall & Network Health Dashboard

Logical ID	Title	Description	Status	Defect ID
DNACJ22S_Reg_01	Adding network devices in DNAC	To add network devices like switches, Controllers to DNAC and check if the network devices gets added to DNAC or not	Passed	
DNACJ22S_Reg_02	Check if the added device is shown in the overall health dashboard	To check if the Network device added in DNAC is shown in the overall health dashboard	Passed	
DNACJ22S_Reg_03	Connecting a Windows clients to a WLAN and check if the client health ,Active clients detail is shown in the wireless Clients dash let	To connect a Window clients to the wlan created and check if the clients health is shown in the wireless client summary	Passed	
DNACJ22S_Reg_04	Connecting a Android clients to a WLAN and check if the client health ,Active clients detail is shown in the wireless Clients dashlet	To connect a Android clients to the wlan created and check if the clients health is shown in the wireless client summary	Passed	
DNACJ22S_Reg_05	Connecting a IOS clients to a WLAN and check if the client health ,Active clients detail is shown in the wireless Clients dashlet	To connect a IOS clients to the wlan created and check if the clients health is shown in the wireless client summary	Passed	

DNACJ22S_Reg_06	Connecting a Mac OS clients to a WLAN and check if the client health ,Active clients detail is shown in the wireless Clients dashlet	To connect a Mac OS clients to the wlan created and check if the clients health is shown in the wireless client summary	Passed	
DNACJ22S_Reg_07	Connecting a clients to a WLAN with WPA + WPA2 Security and check if the client health ,Active clients detail is shown in the wireless Clients dashlet	To connect a clients to the wlan with WPA + WPA2 security and check if the clients health is shown in the wireless client summary	Passed	
DNACJ22S_Reg_08	Connecting a clients to a WLAN with WPA2 + WPA3 Security and check if the client health ,Active clients detail is shown in the wireless Clients dashlet	To connect a clients to the wlan with WPA + WPA2 security and check if the clients health is shown in the wireless client summary	Passed	
DNACJ22S_Reg_09	Connecting a clients to a WLAN with Static WEP Security and check if the client health ,Active clients detail is shown in the wireless Clients dashlet	To connect a clients to the wlan with Static WEP security and check if the clients health is shown in the wireless client summary	Passed	
DNACJ22S_Reg_10	Connecting a Wired client to a RLAN and check if the client health is shown in the wired Clients dashlet	To connect a clients to the rlan created and check if the clients health is shown in the wired client summary	Passed	
DNACJ22S_Reg_11	Check the issue shown in the Top 10 issue types	To check if the issue shown in the top 10 issue type dashlet	Passed	

DNACJ22S_Reg_12	Resolving the issue shown and checking the resolved list	To check if the issue shown in the top 10 issue type dashlet are resolved and the resolved issue are show in resolved list or not	Passed	
DNACJ22S_Reg_13	Check if the added network device is shown in the Network Health page	To check if the Network device added in DNAC is shown in the Network health dashboard	Passed	
DNACJ22S_Reg_14	Validating the graphs shown for the network devices	To validate the if the graphs shown in the network health pages are correct	Passed	
DNACJ22S_Reg_15	Checking the total APs count in the network device page in Total AP count dashlet	To check the total APs count in the network health page which is added in eWLC and check if the AP count are shown correctly	Passed	
DNACJ22S_Reg_16	Checking the Top N APs count in the network device page in Assurance page	To check the Top N APs count in the network health page which in added in eWLC and check if the AP count are shown correctly	Passed	
DNACJ22S_Reg_17	Validating the Top N APs by High Interference in network device in Assurance page	To validate the Top N APs by high interference in the network health page which is added in eWLC and check if the AP count are shown correctly	Passed	
DNACJ22S_Reg_18	Making a eWLC down to check if the Dashboard are updated or not	To make the eWLC down and check if the dashboards in network health are updated accordingly	Passed	

DNACJ22S_Reg_19	Deleting the eWLC with AP and the dashboards	To delete the eWLC with multiples AP and check if the dashboards are updated	Passed	
-----------------	--	--	--------	--

Client and Application Health Dashboard

Logical ID	Title	Description	Status	Defect ID
DNACJ22S_Reg_20	Adding network devices in DNAC	To add network devices like switches, Controllers to DNAC and check if the network devices gets added to DNAC or not	Passed	
DNACJ22S_Reg_21	Connecting a Windows clients to a WLAN and check if the client health ,Active clients detail is shown in the wireless Clients dashlet	To connect a Window clients to the wlan created and check if the clients health is shown in the wireless client summary	Failed	CSCvv25127
DNACJ22S_Reg_22	Connecting a Android clients to a WLAN and check if the client health ,Active clients detail is shown in the wireless Clients dashlet	To connect a Android clients to the wlan created and check if the clients health is shown in the wireless client summary	Passed	
DNACJ22S_Reg_23	Connecting a IOS clients to a WLAN and check if the client health ,Active clients detail is shown in the wireless Clients dashlet	To connect a IOS clients to the wlan created and check if the clients health is shown in the wireless client summary	Passed	

DNACJ22S_Reg_24	Connecting a Mac OS clients to a WLAN and check if the client health ,Active clients detail is shown in the wireless Clients dashlet	To connect a Mac OS clients to the wlan created and check if the clients health is shown in the wireless client summary	Passed	
DNACJ22S_Reg_25	Connecting a Wired client to a RLAN and check if the client health is shown in the wired Clients dashlet	To connect a clients to the rlan created and check if the clients health is shown in the wired client summary	Passed	
DNACJ22S_Reg_26	Validating the client onboarding times in client health page	To validate the client onboarding times in client health page in DNAC assurance	Passed	
DNACJ22S_Reg_27	Validating the client connectivity RSSI in client health page	To validate the client connectivity RSSI in client health page in DNAC assurance	Passed	
DNACJ22S_Reg_28	Validating the client connectivity SNR in client health page	To validate the client connectivity RSSI in client health page in DNAC assurance	Passed	
DNACJ22S_Reg_29	Check the client count per SSID and validating the same	To check the client count per ssid and validating the same through eWLC UI	Passed	
DNACJ22S_Reg_30	Check the client roaming times in client health dashboard in Assurance page	To check the client roaming times in client health page and check if the details show are correct.	Passed	
DNACJ22S_Reg_31	Validating the client data rate in Assurance client health page	To check if the client data rate is shown in the assurance client health page and validate if the data rate shown are correct	Passed	

DNACJ22S_Reg_32	Monitor the overall application health in assurance page of DNAC	To monitor the overall application health in the assurance page	Passed	
-----------------	--	---	--------	--

Predefined Report

Logical ID	Title	Description	Status	Defect ID
DNACJ22S_Reg_41	Verifying dashboard details in Home page of DNAC after created in assurance page	To check whether the dashboard details are showing in Home page or not	Passed	
DNACJ22S_Reg_42	Adding more number of dashboards and checking the same in DNAC home page	To check whether more number of dashboards can be created or not	Passed	
DNACJ22S_Reg_43	Checking the created dashboards in DNAC	To check whether the created dashboard details are showing in My Dashboards or not	Passed	
DNACJ22S_Reg_44	Checking the Favourite dashboard in DNAC	To check whether the Favourite dashboard details are showing correct or not.	Passed	
DNACJ22S_Reg_45	Adding EWLC to DNAC & Verifying the reachability of the devices.	To check whether the EWLC is added to DNAC & also check the reachable state	Passed	
DNACJ22S_Reg_46	Connecting the clients to EWLC and checking the client details in DNAC Dashboard	To verify the client details in DNAC dashboard after Client connected to EWLC	Failed	CSCvv59397
DNACJ22S_Reg_47	Checking the Client health in DNAC dashboard	To verify the client health in DNAC Dashboard	Passed	

DNACJ22S_Reg_48	Monitoring the intra client Roaming details in DNAC dashboard	To verify whether the client is roaming between AP's or not	Passed	
DNACJ22S_Reg_49	Monitoring the inter client Roaming details in DNAC dashboard	To verify whether the clients are roaming between controllers	Passed	
DNACJ22S_Reg_50	Verifying the Disconnected client details in DNAC dashboard	To check whether the client is disconnected or not in DNAC Dashboard	Passed	
DNACJ22S_Reg_51	Verifying the Wired client details in DNAC dashboard	To Check whether the Wired client details are showing or not in DNAC Dashboard	Passed	
DNACJ22S_Reg_52	Checking the client RSSI,Data Rate and SNR Values in DNAC Dashboard	To Check whether the client RSSI,Data Rate& SNR values showing or not in DNAC	Passed	
DNACJ22S_Reg_53	Checking the AP Status in DNAC Dashboard	To Check Whether the AP status Showing correct or not	Passed	
DNACJ22S_Reg_54	Monitoring the per SSID Client count in DNAC Dashboard	To check whether the per SSID client showing correctly or not	Passed	
DNACJ22S_Reg_55	Monitoring to which AP clients are connected and their signal strength	Verifying whether all the clients are monitored or not according to their high interface along with the APs	Passed	

Wireless Sensor Dashboard

Logical ID	Title	Description	Status	Defect ID
DNACJ22S_Reg_82	Monitoring to idle sensors in network	To monitor the the total idle sensors in network	Passed	

DNACJ22S_Reg_83	Monitoring to running sensors in network	To monitor the the total running sensors in network	Passed	
DNACJ22S_Reg_84	Monitoring to unreachable Sensors in network	To monitor the the total unreachable sensors in network	Passed	
DNACJ22S_Reg_85	Checking the Sensor Test result as latest and trend	To check and verify the Sensor Test result as latest and trend	Passed	
DNACJ22S_Reg_86	Checking the latest heatmap for last 30 min	To check the last 30 min heatmap view	Passed	
DNACJ22S_Reg_87	Checking the latest heatmap for last 24 hrs	To check the last 24 hrs heatmap view	Passed	
DNACJ22S_Reg_88	Checking the latest heatmap for last 7 days	To check the last 7 days heatmap view	Passed	
DNACJ22S_Reg_89	Monitoring the Statistics of (top 5) 'Worst Location'	To Monitor the Statistics of (top 5) 'Worst Location'	Passed	
DNACJ22S_Reg_90	Monitoring the Statistics of (top 5) 'Common Test Failure'	To Monitor the Statistics of (top 5) 'Common Test Failure'	Passed	
DNACJ22S_Reg_91	Monitoring the Statistics of (top 5) 'Largest Health Drop'	To Monitor the Statistics of (top 5) 'Largest Health Drop'	Passed	
DNACJ22S_Reg_92	Monitoring the sensor name, status, Last seen, Location, Backhaul type and SSH status	To Monitor the sensor name, status, Last seen, Location, Backhaul type and SSH status	Passed	

Client 360° & Device 360°

Logical ID	Title	Description	Status	Defect ID
------------	-------	-------------	--------	-----------

DNACJ22S_Reg_33	Adding different network devices in DNAC	To add network devices like switches, Controllers to DNAC and check if the network devices gets added to DNAC or not	Passed	
DNACJ22S_Reg_34	Check details of the 9800-40 eWLC in DNAC Device 360° page	To check details of the 9800-40 eWLC in DNA Device 360°	Passed	
DNACJ22S_Reg_35	Check details of the 9800-80 eWLC in DNAC Device 360° page	To check details of the 9800-80 eWLC in DNA Device 360°	Passed	
DNACJ22S_Reg_36	Check details of the 9800-L eWLC in DNAC Device 360° page	To check details of the 9800-L eWLC in DNA Device 360°	Passed	
DNACJ22S_Reg_37	Check details of the 9800-Virtual eWLC in DNAC Device 360° page	To check details of the 9800-Virtual eWLC in DNA Device 360°	Passed	
DNACJ22S_Reg_38	Check details of the EWC in DNAC Device 360° page	To check details of the 9800-40 eWLC in DNA Device 360°	Passed	
DNACJ22S_Reg_39	Check the AP count and client count of eWLC in Device 360°	To check the AP count and client count of eWLC in Device 360°	Passed	
DNACJ22S_Reg_40	Check details of the AP in eWLC using DNAC Device 360° page	To check details of the AP in eWLC using DNAC Device 360° page	Passed	

SWIM

Logical ID	Title	Description	Status	Defect ID
DNACJ22S_Reg_111	Importing a image from a device	To check if the images gets imported from the device or not	Passed	

DNACJ22S_Reg_112	Importing the image through the URL	To import the image using URL and check if the images gets imported or not.	Passed	
DNACJ22S_Reg_113	Import the Invalid image from a device	To import the wrong image using device and check if the images gets imported or not.	Passed	
DNACJ22S_Reg_114	Mark multiple image as golden image and verify which image upgraded with controller.	To Mark multiple image as golden image and validate controller upgraded or not	Passed	
DNACJ22S_Reg_115	Schedule the time for controller upgrade	To Scheduling the time for controller and check the controller upgraded with given time or not	Passed	
DNACJ22S_Reg_116	Scheduling the time as "NOW" to upgrade the controller image	To Scheduling the time as "NOW" for controller and check the controller upgraded or not	Passed	
DNACJ22S_Reg_117	Distributing the image to different devices .	To distribute different images and check if the devices selected	Passed	
DNACJ22S_Reg_118	Associate the client with controller after upgraded	To distribute different images and check if the devices selected	Failed	CSCvv85936
DNACJ22S_Reg_119	Generate SWIM report	To generate SWIM report and verify the details correct or not	Passed	

PnP

Logical ID	Title	Description	Status	Defect ID
DNACJ22S_Reg_140	View devices from the Plug and Play tab	view devices from the Plug and Play tab	Passed	

DNACJ22S_Reg_141	Provision a Switch 9300 with PnP Configuration	Configure 9300 Switch with PNP	Passed	
DNACJ22S_Reg_142	Provision a Switch 9200 L with PnP Configuration	Configure 9200 Switch with PNP	Passed	
DNACJ22S_Reg_143	Provision a Switch 9500 with PnP Configuration	Configure 9500 Switch with PNP	Passed	
DNACJ22S_Reg_144	Provision a Router with PnP Configuration	Configure ISR Router with PNP	Passed	
DNACJ22S_Reg_145	Provision a Legacy router with PnP Configuration	Legacy Configure Router with PNP	Passed	
DNACJ22S_Reg_146	Provision a CSR Router with PnP Configuration	Configure CSR Router with PNP	Passed	
DNACJ22S_Reg_147	Provision a Wireless Controller 9800-40 with PnP Configuration	Configure Wireless Controller with PNP	Passed	
DNACJ22S_Reg_148	Provision a Wireless Controller 9800-80 with PnP Configuration	Configure Wireless Controller with PNP	Passed	
DNACJ22S_Reg_149	Provision a Wireless Controller 9800-L with PnP Configuration	Configure Wireless Controller with PNP	Passed	
DNACJ22S_Reg_150	Automate onboarding Image of a Switch with Plug and Play (PnP)	Load Image to Switch with PnP	Passed	
DNACJ22S_Reg_151	Automate onboarding Image of a Router with Plug and Play (PnP)	Load Image to Router with PnP	Passed	
DNACJ22S_Reg_152	Automate onboarding Image of a Controller 9800-40 with Plug and Play (PnP)	Load Image to Wireless Controller with PnP	Passed	

DNACJ22S_Reg_153	Automate onboarding Image of a Controller 9800-80 with Plug and Play (PnP)	Load Image to Wireless Controller with PnP	Passed	
DNACJ22S_Reg_154	Automate onboarding Image of a Controller 9800-L with Plug and Play (PnP)	Load Image to Wireless Controller with PnP	Passed	

New AP Support

Logical ID	Title	Description	Status	Defect ID
DNACJ22S_Reg_56	Adding Cataylast AP's in Controller & checking the AP details in DNAC	To check whether cataylast AP's details are showing or not in DNAC	Passed	
DNACJ22S_Reg_57	Associating 9130 AP with different country code as with eWLC and cheeking the AP details	To associate 9130 AP with different country code and check if the AP does not get joined in DNAC	Passed	
DNACJ22S_Reg_58	Configuring 9115/9120/9130 AP with duplicate IP	To configure AP with a duplicate IP address and check if the AP shows error message or not.	Passed	
DNACJ22S_Reg_59	Connecting a Windows client to the Catalyst AP	To connect a window client to the AP and check the client connectivity in DNAC	Passed	
DNACJ22S_Reg_60	Connecting a Android client to the Catalyst AP	To connect a Android client to the AP and check the client connectivity in DNAC	Passed	
DNACJ22S_Reg_61	Connecting a IOS client to the catalyst AP	To connect a IOS client to the AP and check the client connectivity in DNAC	Passed	

DNACJ22S_Reg_62	Connecting a MAC client to the catalyst AP	To connect a MAC client to the AP and check the client connectivity in DNAC	Passed	
DNACJ22S_Reg_63	Changing the 9115 AP from Flexconnect to Local mode and check if the AP reboot	To check if the 9115 AP reboots when AP mode is changed from flexconnect to Local mode .	Passed	
DNACJ22S_Reg_64	Checking FlexConnect Local Switching and Local Auth works properly	To check if FlexConnect Local Switching and Local Auth works in Catalyst Ap and check if the clients gets locally authenticated and switched locally	Passed	
DNACJ22S_Reg_65	Rebooting the catalyst AP's	To check if the Catalyst AP gets Rebooted or not and check if the AP joins the controller again.	Passed	
DNACJ22S_Reg_66	Rebooting the 9115 AP with primary controller given in High Availability	To reboot the 9115 AP by giving the primary controller IP using high availability and check if the AP joins the primary controller	Passed	
DNACJ22S_Reg_67	Checking the details of the Catalyst AP & the Client connectivity through the CLI	To check the details of the catalyst AP & client connectivity using CLI	Passed	
DNACJ22S_Reg_68	Monitoring the intra client Roaming details in DNAC with catalyst AP's	To verify whether the client is roaming between Catalyst AP's or not	Passed	

Cisco Catalyst 9800-L Wireless Controller Support

Logical ID	Title	Description	Status	Defect ID
------------	-------	-------------	--------	-----------

DNACJ22S_Reg_120	Verifying device details in inventory after added/discovered in cisco DNA	To verify whether the device details are showing in inventory after added in cisco DNA	Passed	
DNACJ22S_Reg_121	Monitoring the devices after adding in cisco DNA and verifying same in eWC	Verifying whether added devices properly assured or monitoring in cisco DNA	Passed	
DNACJ22S_Reg_122	Discovering multiple devices in cisco DNA and check for the same count in monitored devices	Checking whether count of wireless devices are added in Cisco DNA and they are monitored properly or not	Passed	
DNACJ22S_Reg_123	Checking AP devices in inventory after Wireless controller discovered in cisco DNA	To verify whether all AP's details showing in inventory after device discovered	Passed	
DNACJ22S_Reg_124	Checking the AP's count in network health after successfully added in inventory	To verify AP's count in Assurance dashboard after added in inventory	Passed	
DNACJ22S_Reg_125	Resync the cisco DNA and checking for the newly added AP's count in device	To verify newly added AP's count in cisco DNA after resync	Passed	
DNACJ22S_Reg_126	Exporting the inventory details from cisco DNA	To verify whether user able to export the device inventory details or not	Passed	
DNACJ22S_Reg_127	Importing the inventory details to device from computer in cisco DNA	To verify whether user able to import the device inventory details or not	Passed	
DNACJ22S_Reg_128	Running the commands in cisco DNA using command runner	To check the output for device commands after run in command runner in cisco DNA	Passed	

DNACJ22S_Reg_129	Deleting the device from inventory in cisco DNA	To check whether user able to delete the device from inventory or not	Passed	
DNACJ22S_Reg_130	Checking the device reachability status in inventory after make the device down	To check whether reachability status change to "unreachable" or not when device is down	Failed	CSCvv93292
DNACJ22S_Reg_131	Adding site and provisioning device	To check whether user able to create site and provision device	Passed	
DNACJ22S_Reg_132	Positioning AP's on site with different radios	To check AP's positioning after positioned with different radios	Passed	
DNACJ22S_Reg_133	Checking for internal AP details after device added discovered	To verify whether EWC device showing as AP or not in inventory	Passed	
DNACJ22S_Reg_134	Connecting the clients to AP's and checking the client count in Dashboard	To verify the client details in client Health after connected to AP	Passed	
DNACJ22S_Reg_135	Provisioning the ME_WC in day0 via PnP profile and bring device day1	Verify that user is able to Provisioned the EWC in day0 via PnP profile or not	Passed	
DNACJ22S_Reg_136	Adding the ME in DNA-C via inventory method	Verify that user is able to add ME in DNA-C via inventory method or not	Passed	
DNACJ22S_Reg_137	Exporting the CSV file of eWLC_ME from DNA-C using Credential export type	To check whether the exported CSV file using Credential export type has correct information of eWLC_ME	Passed	

DNACJ22S_Reg_138	Adding eWLC_ME to DNAC by Importing CSV file using Credential export type	To check whether the user is able to add eWLC_ME device in DNA-C by importing CSV file exported using Credential export type	Passed	
DNACJ22S_Reg_139	Exporting the CSV file of eWLC_ME from DNA-C using data export type	To check whether the exported CSV file using data export type has correct information of eWLC_ME	Passed	

Rolling AP upgrade

Logical ID	Title	Description	Status	Defect ID
DNACJ22S_Reg_93	Providing the same controller name and ip address for primary controller and N+1 controller	To check whether the same controller name is accepted or not for primary controller and N+1 controller	Passed	
DNACJ22S_Reg_94	Upgrading the software image in a controller	To check whether the software image is upgraded in controller	Passed	
DNACJ22S_Reg_95	Scheduling the time to upgrade the software image into a controller.	To check whether the software image is upgraded into a controller in scheduling time	Passed	
DNACJ22S_Reg_96	Scheduling the time "Now" to upgrade the software image into a controller.	To check whether the software image is upgraded into a controller in scheduling time "Now"	Passed	
DNACJ22S_Reg_97	Resync trigger to Controller from DNAC after upgrade the software image in controller.	To check whether Controller is reloaded when triggering from DNAC after upgrade the software image in controller.	Passed	

DNACJ22S_Reg_98	Upgrade the wrong software image into the Controller from DNAC	To verify whether the error message will display when trying to upgrade wrong software image into the Controller from DNAC	Passed	
DNACJ22S_Reg_99	AP joining status to Controller after upgrade the software image	To check whether the joined Aps upgraded with controller image	Passed	
DNACJ22S_Reg_100	Verify the client connectivity status to Controller after upgrade the software image	To check whether the Client associate with controller	Passed	
DNACJ22S_Reg_101	Upgrading the software image into existing group of AP	To check whether the software image is upgraded into existing group of AP	Passed	
DNACJ22S_Reg_102	Import the image to image repository using HTTP	To check whether the WLC is upgraded using TFTP from PI	Passed	
DNACJ22S_Reg_103	Import the image to image repository using FTP	To check whether the WLC is upgraded using FTP from PI	Passed	

Mobility configuration

Logical ID	Title	Description	Status	Defect ID
DNACJ22S_Reg_69	Configuring Mobility configuration in Controller	To verify the mobility configuration in controller	Passed	
DNACJ22S_Reg_70	Checking the Mobility configuration in DNAC	To verify whether the mobility configurations are showing or not in DNAC	Passed	

DNACJ22S_Reg_71	Changing the Mobility group name in controller-1 and check the controller's status in DNAC	To verify whether the controller status in DNAC by changing the mobility group Name.	Passed	
DNACJ22S_Reg_72	Checking the Mobility groups configuration in HA setup	To check the mobility group configurations in DNAC during HA	Passed	
DNACJ22S_Reg_73	Checking the Mobility configuration between lightweight to virtual controller in DNAC	To check whether the mobility happens between lightweight & Virtual controller	Passed	
DNACJ22S_Reg_74	Checking the mobility configuration between virtual to 9800 controller in DNAC	To check whether the mobility happens between 9800 & Virtual controller	Passed	
DNACJ22S_Reg_75	Verifying the mobility configuration with Different Radio types in DNAC	To verify whether Client is Moving between Controllers with Different Radio type or not	Passed	
DNACJ22S_Reg_76	Verifying the mobility configuration with same Radio types in DNAC	To verify whether Client is Moving between Controllers with same Radio type or not	Passed	
DNACJ22S_Reg_77	Monitoring mobility configuration in DNAC using Android Client	To verify whether the Android client details are showing in DNAC or not	Passed	
DNACJ22S_Reg_78	Monitoring mobility configuration in DNAC using iOS Client	To verify whether the iOS client details are showing in DNAC or not	Passed	
DNACJ22S_Reg_79	Monitoring mobility configuration in DNAC using Windows Client	To verify whether the Windows client details are showing in DNAC or not	Passed	

DNACJ22S_Reg_80	Monitoring mobility configuration in DNAC using Mac Client	To verify whether the Mac client details are showing in DNAC or not	Passed	
DNACJ22S_Reg_81	Add/update/delete mobility peer configuration in DNAC	To check whether the mobility Peer configurations are add/Update/delete in DNAC	Passed	

Guest web passthrough

Logical ID	Title	Description	Status	Defect ID
DNACJ22S_Reg_104	Deploying the guest SSID in eWLC UI from Dnac	To Verify whether the guest SSID deployed from Dnac or not	Passed	
DNACJ22S_Reg_105	Configuring Internal guest web pass-through	To Verify whether the redirection happened Internally or not	Passed	
DNACJ22S_Reg_106	Configuring External guest web pass-through	To Verify whether the redirection happened with external server or not	Passed	
DNACJ22S_Reg_107	Configuring sleeping client with timeout settings	To verify whether the client associate within the time period or not after wakeup	Passed	
DNACJ22S_Reg_108	Configuring sleeping client without timeout settings	To verify whether the client able to authenticate all the time after wakeup	Passed	
DNACJ22S_Reg_109	Creating web authentication Internal / external SSID	To verify whether the client association while configuring web authentication	Passed	
DNACJ22S_Reg_110	Configuring the web pass-through without sleeping client	To verify the client connectivity without sleeping client configuration	Passed	

CMX Support

Logical ID	Title	Description	Status	Defect ID
DNACJ22S_Reg_155	Verify the CMX Support in DNAC	By adding the CMX with DNAC	Passed	
DNACJ22S_Reg_156	Verify CMX for the client location and displays the location on the floor map for Windows Machine	Display Client in Maps Windows	Passed	
DNACJ22S_Reg_157	Verify CMX for the client location and displays the location on the floor map for MAC Machine	Display Client in Maps MAC	Passed	
DNACJ22S_Reg_158	Verify CMX for the client location and displays the location on the floor map for Android	Display Client in Maps Android Mobile	Passed	
DNACJ22S_Reg_159	Verify CMX for the client location and displays the location on the floor map for Apple Mobile	Display Client in Maps Apple mobile	Passed	
DNACJ22S_Reg_160	Verify the Network health score of Controller 9800-40	Health Score of 9800-40	Passed	
DNACJ22S_Reg_161	Verify the Network health score of Controller 9800-80	Health Score of 9800-80	Passed	
DNACJ22S_Reg_162	Verify the Network health score of Controller 9800-L	Health Score of 9800-L	Passed	
DNACJ22S_Reg_163	Verify Overall Health Map or Hierarchical Site View or Building View dashlet	Building View Dashlet	Passed	
DNACJ22S_Reg_164	Verify Overall Health Summary dashlet	Overall Health Summary dashlet	Passed	

DNA Spaces Support

Logical ID	Title	Description	Status	Defect ID
DNACJ22S_Reg_165	Connecting CMX to DNA Spaces using CMX Tethering	To connect CMX to DNA spaces using CMX tethering and check if the CMX is added	Passed	
DNACJ22S_Reg_166	Connecting CMX to DNA Spaces using CMX Tethering and adding Campuses from PI	To connect CMX to DNA spaces using CMX tethering and add campuses. check if the CMX is added and campuses are added to it.	Passed	
DNACJ22S_Reg_167	Connecting CMX to DNA Spaces using CMX Tethering and adding Campuses from DNAC	To connect CMX to DNA spaces using CMX tethering and add campuses. check if the CMX is added and campuses are added to it.	Passed	
DNACJ22S_Reg_168	Adding a space connector to DNA Spaces	To add a space connector to DNA spaces.	Passed	
DNACJ22S_Reg_169	Adding a controller to DNA Space using Space connector	To add a controller to DNA space using space connector and check if the controller is added or not.	Passed	
DNACJ22S_Reg_170	Upgrading the DNA Space connector	To upgrade the DNA space connector and check if the connector is upgraded or not	Passed	
DNACJ22S_Reg_171	Connecting AireOS wireless controller to DNA Spaces using WLC Direct Connect.	To connect AireOS controller to DNA Spaces using WLC Direct Connect.	Passed	

DNACJ22S_Reg_172	Adding a Wireless Network in DNA Spaces	To add a wireless network in DNA spaces and check if the wireless network is added to the DNA Spaces.	Passed	
DNACJ22S_Reg_173	Adding a Wireless Network in DNA Spaces	To add a wireless network in DNA spaces and check if the wireless network is added to the DNA Spaces.	Passed	
DNACJ22S_Reg_174	Connecting Catalyst 9800 wireless controller to DNA Spaces using WLC Direct Connect.	To connect Catalyst 9800 controller to DNA Spaces using WLC Direct Connect.	Passed	
DNACJ22S_Reg_175	Adding a Wireless Network in DNA Spaces	To add a wireless network in DNA spaces and check if the wireless network is added to the DNA Spaces.	Passed	
DNACJ22S_Reg_178	Adding Zone in DNA Spaces	To add zones in DNA spaces under location hierarchy	Passed	
DNACJ22S_Reg_179	Connect a WLC to DNA Spaces via Aireos WLC Direct connector using wrong token or certificate.	To connect a WLC to DNA Spaces via Aireos WLC direct connector using wrong token or certificate and check if the WLC is showing in location hierarchy or not.	Passed	
DNACJ22S_Reg_180	Adding a AP to the already configured WLC in DNA Space	Adding a AP to the already configured WLC and check if the AP count gets added increased	Passed	

DNAC support for eWLC

Logical ID	Title	Description	Status	Defect ID
------------	-------	-------------	--------	-----------

DNACJ22S_Reg_181	Verifying device details in inventory after added/discovered in cisco DNA	To verify whether the device details are showing in inventory after added in cisco DNA	Passed	
DNACJ22S_Reg_182	Monitoring the devices after adding in cisco DNA and verifying same in eWLC	Verifying whether added devices properly assured or monitoring in cisco DNA	Passed	
DNACJ22S_Reg_183	Discovering multiple devices in cisco DNA and check for the same count in monitored devices	Checking whether count of wireless devices are added in Cisco DNA and they are monitored properly or not	Passed	
DNACJ22S_Reg_184	Checking AP devices in inventory after Wireless controller discovered in cisco DNA	To verify whether all AP's details showing in inventory after device discovered	Failed	CSCvw06424
DNACJ22S_Reg_185	Checking the AP's count in network health after successfully added in inventory	To verify AP's count in Assurance dashboard after added in inventory	Passed	
DNACJ22S_Reg_186	Resync the cisco DNA and checking for the newly added AP's count in device	To verify newly added AP's count in cisco DNA after resync	Passed	
DNACJ22S_Reg_187	Exporting the inventory details from cisco DNA	To verify whether user able to export the device inventory details or not	Passed	
DNACJ22S_Reg_188	Importing the inventory details to device from computer in cisco DNA	To verify whether user able to import the device inventory details or not	Passed	
DNACJ22S_Reg_189	Running the commands in cisco DNA using command runner	To check the output for device commands after run in command runner in cisco DNA	Passed	

DNACJ22S_Reg_190	Deleting the device from inventory in cisco DNA	To check whether user able to delete the device from inventory or not	Passed	
DNACJ22S_Reg_191	Checking the device reachability status in inventory after make the device down	To check whether reachability status change to "unreachable" or not when device is down	Passed	
DNACJ22S_Reg_192	Adding site and provisioning device in cisco DNA	To check whether user able to create site and provision device	Passed	
DNACJ22S_Reg_193	Positioning AP's on site with different radios in cisco DNA	To check AP's positioning after positioned with different radios	Passed	
DNACJ22S_Reg_194	Connecting the wireless clients to AP's and checking the client count in Dashboard	To verify the wireless client details in client Health after connected to AP	Failed	CSCvw07359
DNACJ22S_Reg_195	Connecting the wired clients to AP's and checking the client count in Dashboard	To verify the wired clients details in client Health after connected to AP	Passed	
DNACJ22S_Reg_196	Downloading the upgrade readlines report from inventory devices in cisco DNA	To check whether the user able to download the upgrade readlines report from inventory devices or not	Passed	

RSSI and SNR in ASSOC request

Logical ID	Title	Description	Status	Defect ID
DNACJ22S_Reg_197	Adding eWLC to DNAC and connecting clients	To verify SNR and RSS values in DNA center after connecting client	Passed	

DNACJ22S_Reg_198	Connecting client to AP flex connect mode ,authentication as open and verifying SNR and RSS details	To verify SNR and RSS connectivity in DNACentre with AP mode flexconnect and authentication as open	Passed	
DNACJ22S_Reg_199	Connecting client to AP flex connect mode ,authentication as PSK and verifying SNR and RSS details	To verify SNR and RSS connectivity in DNACentre with AP mode flexconnect and authentication as PSK	Passed	
DNACJ22S_Reg_200	Connecting client to AP flex connect mode ,authentication as dot11 and verifying SNR and RSS details	To verify SNR and RSS connectivity in DNACentre with AP mode flexconnect and authentication as dot11	Passed	
DNACJ22S_Reg_201	verifying SNR and RSS details after connecting client to AP flex mode as standalone ,authentication as open	To verify SNR and RSS connectivity in DNACentre with AP as Flex standalone and authentication as open	Failed	DNACJ22S_Reg_201
DNACJ22S_Reg_202	verifying SNR and RSS details after connecting client to AP flex mode as standalone ,authentication as PSK	To verify SNR and RSS connectivity in DNACentre with AP as Flex standalone and authentication as PSK	Passed	
DNACJ22S_Reg_203	verifying SNR and RSS details after connecting client to AP flex mode as standalone ,authentication as dot11	To verify SNR and RSS connectivity in DNACentre with AP as Flex standalone and authentication as dot11	Passed	
DNACJ22S_Reg_204	Connecting client to AP local ,authentication as dot11 and verifying SNR and RSS details	To verify SNR and RSS connectivity in DNACentre with AP mode as local and authentication as dot11	Passed	

DNACJ22S_Reg_205	Connecting client to AP mode as local verifying SNR and RSS details	To verify SNR and RSS connectivity in DNACentre with AP mode as local	Passed	
DNACJ22S_Reg_206	Connecting client to AP mode as bridge ,authentication as dot11 and verifying SNR and RSS details	To verify SNR and RSS connectivity in DNACentre with AP mode as bridge	Passed	
DNACJ22S_Reg_207	Checking the SNR and RSS values after performing intra roaming in eWLC	To verify SNR and RSS connectivity in DNACentre after doing intra roaming in WLC	Passed	
DNACJ22S_Reg_208	Roaming client from 9115 & 9120 Aps and checking the SNR and RSS values	To Check the SNR and RSS values when client roam between 3800 & 1815 Aps	Passed	
DNACJ22S_Reg_209	Checking the SNR and RSS values after performing inter roaming in eWLC	To verify SNR and RSS connectivity in DNACentre after doing inter roaming in eWLC	Passed	
DNACJ22S_Reg_210	Checking the SNR and RSS values after performing FT roaming roaming in eWLC	To verify SNR and RSS connectivity in DNACentre after doing FT roaming in eeWLC	Passed	
DNACJ22S_Reg_211	Verifying the AID values in client after connecting client	To check whether client getting AID value or not	Passed	

DNAC Support for eWC

Logical ID	Title	Description	Status	Defect ID
DNACJ22S_Reg_212	Verifying device details in inventory after added/discovered in cisco DNA	To verify whether the device details are showing in inventory after added in cisco DNA	Failed	CSCvv98912

DNACJ22S_Reg_213	Monitoring the devices after adding in cisco DNA and verifying same in eWC	Verifying whether added devices properly assured or monitoring in cisco DNA	Passed	
DNACJ22S_Reg_214	Discovering multiple devices in cisco DNA and check for the same count in monitored devices	Checking whether count of wireless devices are added in Cisco DNA and they are monitored properly or not	Passed	
DNACJ22S_Reg_215	Checking AP devices in inventory after Wireless controller discovered in cisco DNA	To verify whether all AP's details showing in inventory after device discovered	Failed	CSCvv91230
DNACJ22S_Reg_216	Checking the AP's count in network health after successfully added in inventory	To verify AP's count in Assurance dashboard after added in inventory	Passed	
DNACJ22S_Reg_217	Resync the cisco DNA and checking for the newly added AP's count in device	To verify newly added AP's count in cisco DNA after resync	Passed	
DNACJ22S_Reg_218	Exporting the inventory details from cisco DNA	To verify whether user able to export the device inventory details or not	Passed	
DNACJ22S_Reg_219	Importing the inventory details to device from computer in cisco DNA	To verify whether user able to import the device inventory details or not	Passed	
DNACJ22S_Reg_220	Running the commands in cisco DNA using command runner	To check the output for device commands after run in command runner in cisco DNA	Passed	
DNACJ22S_Reg_221	Deleting the device from inventory in cisco DNA	To check whether user able to delete the device from inventory or not	Passed	

DNACJ22S_Reg_222	Checking the device reachability status in inventory after make the device down	To check whether reachability status change to "unreachable" or not when device is down	Passed	
DNACJ22S_Reg_223	Adding site and provisioning device	To check whether user able to create site and provision device	Passed	
DNACJ22S_Reg_224	Positioning AP's on site with different radios	To check AP's positioning after positioned with different radios	Passed	
DNACJ22S_Reg_225	Checking for internal AP details after device added discovered	To verify whether ME WC device showing as AP or not in inventory	Passed	
DNACJ22S_Reg_226	Connecting the clients to AP's and checking the client count in Dashboard	To verify the client details in client Health after connected to AP	Passed	
DNACJ22S_Reg_227	Provisioning the ME_WC in day0 via PnP profile and bring device day1	Verify that user is able to Provisioned the ME WC in day0 via PnP profile or not	Passed	

Inventory

Logical ID	Title	Description	Status	Defect ID
DNACJ22S_Reg_248	Adding different network devices in DNAC	To add network devices like switches, Controllers to DNAC and check if the network devices gets added to DNAC or not	Passed	
DNACJ22S_Reg_249	Adding 9800-40 eWLC in DNAC through inventory page	To add the 9800-40 eWLC to DNAC through Inventory page and check if the devices is added successfully or not	Passed	

DNACJ22S_Reg_250	Adding 9800-80 eWLC in DNAC through inventory page	To add the 9800-80 eWLC to DNAC through Inventory page and check if the devices is added sucefully or not	Passed	
DNACJ22S_Reg_251	Adding 9800-L eWLC in DNAC through inventory page	To add the 9800-L eWLC to DNAC through Inventory page and check if the devices is added sucefully or not	Passed	
DNACJ22S_Reg_252	Adding 9800 Virtual eWLC in DNAC through inventory page	To add the 9800 Virtual eWLC to DNAC through Inventory page and check if the devices is added sucefully or not	Passed	
DNACJ22S_Reg_253	Adding EWC in DNAC through inventory page	To add the EWC to DNAC through Inventory page and check if the devices is added sucefully or not	Passed	
DNACJ22S_Reg_254	Editing the details of the network devices added to DNAC	To edit the details of the network devices added to DNAC and check if the details are edited successfully	Passed	
DNACJ22S_Reg_255	Resyncing the network device which is added to DNAC	To resync the network device added to DNAC and check if the device is resynced or not	Passed	
DNACJ22S_Reg_256	Deleting the added network device through inventory page	To delete the network device which is added to the DNAC and check if the device is deleted from DNAC successfully	Passed	

DNACJ22S_Reg_257	Check details of the eWLC in Device 360° information button from inventory page	To check details of the eWLC in DNA Device 360° in inventory page	Passed	
DNACJ22S_Reg_258	Updating the image to a network device through the inventory	To update the image of the network device added in DNAC through inventory page	Passed	
DNACJ22S_Reg_259	Checking the image update status of the network device added in the DNAC	To check the image status of the network device added in DNAC through	Passed	
DNACJ22S_Reg_260	Assigning a site to the network device	To assigning a site to the network device through the inventory page and check if the site is assigned or not	Passed	
DNACJ22S_Reg_261	Provisioning a the network device through inventory page via DNAC	To provision the network device via DNAC through the option in inventory page	Passed	
DNACJ22S_Reg_262	Importing the inventory details in DNAC	To import the details of the inventory in DNAC and check if the inventory details are imported successfully	Passed	
DNACJ22S_Reg_263	Exporting the inventory details to DNAC	To export the inventory details to DNAC and check if the details are exported successfully	Passed	
DNACJ22S_Reg_264	Downloading the upgrade readiness report from inventory page	To download the upgrade readiness report from inventory page and check the detail in the downloaded file	Passed	

DNACJ22S_Reg_265	Configuring HA WLC through DNAC inventory page	To configure HA WLC through DNAC inventory page and check if the HA is formed between WLC's	Passed	
DNACJ22S_Reg_266	Enabling Application telemetry to the network devices added in DNAC	To enable application telemetry to network device and check if the telemetry is applied to the device or not	Passed	
DNACJ22S_Reg_267	Disabling Application telemetry to the network devices added in DNAC	To disable application telemetry to network device and check if the telemetry is disabled for the device for which telemetry is enabled.	Passed	

DNAC Co-existence Tools

Logical ID	Title	Description	Status	Defect ID
DNACJ22S_Reg_268	Adding the DNAC server in PI Cisco DNA Center Coexistence page	To add the DNAC server in PI and check if the DNAC server is added and saved successfully in Cisco DNA Center Coexistence page	Passed	
DNACJ22S_Reg_269	Migrating 9800-40 eWLC from PI to DNAC through Cisco DNA Center Coexistence page	To migrate 9800-40 eWLC from PI to DNAC and check if the migration of the device is successful	Passed	
DNACJ22S_Reg_270	Migrating 9800-40 HA eWLC from PI to DNAC through Cisco DNA Center Coexistence page	To migrate 9800-40 HA eWLC from PI to DNAC and check if the migration of the device is successful also verify HA status	Passed	

DNACJ22S_Reg_271	Migrating 9800-80 eWLC from PI to DNAC through Cisco DNA Center Coexistence page	To migrate 9800-80 eWLC from PI to DNAC and check if the migration of the device is successful	Passed	
DNACJ22S_Reg_272	Migrating 9800-800 HA eWLC from PI to DNAC through Cisco DNA Center Coexistence page	To migrate 9800-80 HA eWLC from PI to DNAC and check if the migration of the device is successful also verify HA status	Passed	
DNACJ22S_Reg_273	Migrating 9800-L eWLC from PI to DNAC through Cisco DNA Center Coexistence page	To migrate 9800-L eWLC from PI to DNAC and check if the migration of the device is successful	Passed	
DNACJ22S_Reg_274	Migrating 9800-CL eWLC from PI to DNAC through Cisco DNA Center Coexistence page	To migrate 9800-CL eWLC from PI to DNAC and check if the migration of the device is successful	Passed	
DNACJ22S_Reg_275	Migrating EWC from PI to DNAC through Cisco DNA Center Coexistence page	To migrate EWC from PI to DNAC and check if the migration of the device is successful	Passed	
DNACJ22S_Reg_276	Check if the network device with snmp version 1 gets migrated or not	To check if the network device with snmp version V1 is getting migrated to DNA or not	Passed	
DNACJ22S_Reg_277	Check if the eWLC after migration from PI to DNAC are managed without giving Netconf	To check if the eWLC after migration from PI to DNAC are managed without giving Netconf	Passed	
DNACJ22S_Reg_278	Configuring Netconf to the eWLC migrated from PI and check if it becomes managed or not	To configure netconf to the EWLC device migrated from PI to DNAC and check if the device is managed or not	Passed	

DNACJ22S_Reg_279	Configuring Netconf to the EWC migrated from PI and check if it becomes managed or not	To configure netconf to the EWC device migrated from PI to DNAC and check if the device is managed or not	Passed	
DNACJ22S_Reg_280	Importing eWLC with AP added in Site Maps from PI to DNAC	To import the eWLC which has AP added in Floor map and check if the devices are migrated from PI DNAC	Passed	
DNACJ22S_Reg_281	Migrating AP added in site Maps from PI to DNAC in which eWLC is not managed	To Migrate AP from PI to DNAC without adding Netconf for the eWLC and check if the AP is shown in the DNAC maps or not	Passed	
DNACJ22S_Reg_282	Moving the migrated eWLC from one site to another in DNAC	To move the migrated eWLC from one site to another and check if the eWLC gets moved or not	Passed	
DNACJ22S_Reg_283	Migrating Cat 9600 switch from PI to DNAC through Cisco DNA Center Coexistence page	To migrate Cat 9600 from PI to DNAC and check if the migration of the device is successful	Passed	

Samsung Device Support

Logical ID	Title	Description	Status	Defect ID
DNACJ22S_Reg_284	Configuring DNAC with Network devices, access points.	To configure DNAC with Network devices, access points.	Passed	
DNACJ22S_Reg_285	Connect client and check client 360 dashboard details.	To connect client and check client 360 dashboard details.	Passed	

DNACJ22S_Reg_286	Connect Samsung client and check if client details are shown in Client 360 dashboard	To connect Samsung client and check if client details are shown in Client 360 dashboard	Passed	
DNACJ22S_Reg_287	Check more details of associated Samsung client	To check more details of associated Samsung client	Passed	
DNACJ22S_Reg_288	Connect Samsung client with AP in Flex mode	To connect Samsung client with AP in Flex mode	Passed	
DNACJ22S_Reg_289	Connect Samsung client with WPA2 PSK security	To connect Samsung client with WPA2 PSK security	Passed	
DNACJ22S_Reg_290	Connect Samsung client with WPA3 security	To connect Samsung client with WPA3 security	Passed	
DNACJ22S_Reg_291	Monitor client stats in client 360 dashboard.	To monitor client stats in client 360 dashboard.	Passed	
DNACJ22S_Reg_292	Disconnect Samsung client and check details in client 360 dashboard.	To disconnect client and check details in client 360 dashboard.	Passed	
DNACJ22S_Reg_293	Check Samsung client details in Client Summary report	Check Samsung client details in Client Summary report	Passed	
DNACJ22S_Reg_294	Check Samsung client details in Client Session report	Check Samsung client details in Client Session report	Passed	
DNACJ22S_Reg_295	Check Samsung client details in Client Detail report	Check Samsung client details in Client Detail report	Passed	
DNACJ22S_Reg_296	Check Samsung client details in Client Trend report	Check Samsung client details in Client Trend report	Passed	

AP Upgrade Flow

Logical ID	Title	Description	Status	Defect ID
------------	-------	-------------	--------	-----------

DNACJ22S_Reg_297	Upload AP details via GUI	To Verify the AP details uploaded or not via GUI	Passed	
DNACJ22S_Reg_298	Upload AP details via CSV file	To Verify the AP details uploaded or not via CSV file	Passed	
DNACJ22S_Reg_299	Select multiple ap for the replacement process	To Verify the AP details uploaded or not via CSV file with multiple ap details	Passed	
DNACJ22S_Reg_300	Download the report after Ap refresh process	To verify AP details in report after ap replacement	Passed	
DNACJ22S_Reg_301	Selecting the candidate for New AP from same controller	To verify AP should be selected in same controller	Passed	
DNACJ22S_Reg_302	Selecting the candidate for New AP from different controller	To verify AP should not be selected in different controller	Passed	
DNACJ22S_Reg_303	Choosing the wrong serial number for new AP	To verify the AP Refresh with wrong serial number	Passed	
DNACJ22S_Reg_304	AP Refresh with same model AP(9115 to 9115)	To verify AP Refresh with same AP model	Passed	
DNACJ22S_Reg_305	AP Refresh with different model AP(9115 to 9130)	To verify AP Refresh with different AP model	Passed	
DNACJ22S_Reg_306	Verifying the all model AP would be replacement process	To Verify Mark replacement works fine for all model APs	Passed	
DNACJ22S_Reg_307	Client association after AP Refresh	To verify Client association after refresh process	Passed	
DNACJ22S_Reg_308	Validating the configuration copied in new AP	To verify the configuration after AP refresh process	Passed	

AP RMA

Logical ID	Title	Description	Status	Defect ID
DNACJ22S_Reg_309	Checking A AP which was marked to replace an existing AP cannot be used for another faulty device	To Verify the AP which was marked to replace an existing AP cannot be used for another faulty device or not	Passed	
DNACJ22S_Reg_310	Verify the client association after AP RMA process	To Verify the client associate or not after RMA process	Passed	
DNACJ22S_Reg_311	Selecting the candidate for New AP whether it is already provisioned and assign to the site	To verify An AP if already provisioned or added to SITE, Wont be allowed as candidate for new AP	Passed	
DNACJ22S_Reg_312	Selecting the new AP for Marked as replacement	To verify AP marked as replacement cant be allowed to be marked as a new AP	Passed	
DNACJ22S_Reg_313	Selecting the replacement AP for for new AP	To verify able to select replacement ap for new AP or not	Passed	
DNACJ22S_Reg_314	Choosing same model AP & PID as new AP	To verify Choice of new AP model is restricted to same model and PID must be exact match	Passed	
DNACJ22S_Reg_315	Deleting the marked AP from the inventory after RMA process	To verify after RMA process marked AP or deleted or not	Passed	
DNACJ22S_Reg_316	Un-Configuring the old AP config while processing AP replacement	To verify DNAC must configure old APs config in case of movement of APs instead of replacement	Passed	

DNACJ22S_Reg_317	Selecting the candidate for New AP from same controller	To verify the AP should selected in same controller	Passed	
DNACJ22S_Reg_318	Selecting the candidate for New AP from different controller	To verify the AP should not selected in different controller	Passed	
DNACJ22S_Reg_319	Verifying the all model AP would be configure marked for replacement option	To Verify Mark replacement works fine for all model APs and the same reflects correctly under the marked for replacement tab	Passed	
DNACJ22S_Reg_320	Performing multiple RMA process for same AP	To verify Multiple RMA for same AP model must not be allowed	Passed	
DNACJ22S_Reg_321	Un Marking the replacement AP from Marked for replacement tab	To verify Unmark for replacement must remove the device from Marked for replacement tab	Passed	
DNACJ22S_Reg_322	Validating the ip address in new AP after RMA process	To verify the ip address after RMA process	Passed	
DNACJ22S_Reg_323	Associate the client with new AP after RMA process	To verify the client associate or not after the RMA process	Passed	
DNACJ22S_Reg_324	Verify the RMA process with PnP flow	To verify the RMA process in PnP flow	Passed	
DNACJ22S_Reg_325	Verifying the credentials are same RMA process and before claim process	To verify the credential after RMA process	Passed	
DNACJ22S_Reg_326	Choosing the schedule for later replacement option for RMA process	To verify AP RMA process with schedule for later option	Passed	

Basic Reporting for Rogue

Logical ID	Title	Description	Status	Defect ID
DNACJ22S_Reg_327	Download and install Rogue management in DNAC	To download and install Rogue management in DNAC	Passed	
DNACJ22S_Reg_328	Enabling Rogue management	To enable rogue management	Passed	
DNACJ22S_Reg_329	Monitor the threats detected under the Rogue management dashboard	To monitor the threats detected under the Rogue management dashboard	Passed	
DNACJ22S_Reg_330	Check status of devices added after rogue config job is enabled	To check status of devices added after rogue config job is enabled	Passed	
DNACJ22S_Reg_331	Check status of existing and devices added after rogue config job is disabled	To check status of existing and devices added after rogue config job is disabled	Passed	
DNACJ22S_Reg_332	Edit time range and verify details in dashboard	Edit time range and verify details in dashboard	Passed	
DNACJ22S_Reg_333	Using show map option in dashboard	To check show map option in Rogue dashboard.	Passed	
DNACJ22S_Reg_334	Refresh dashboard to check if details are updated	To refresh dashboard and check if details are updated	Passed	
DNACJ22S_Reg_335	Filter threats and customize fields in rogue dashboard.	To filter threats and customize fields in rogue dashboard.	Passed	
DNACJ22S_Reg_336	Check threat 360 page details.	To check threat 360 page details.	Passed	
DNACJ22S_Reg_337	Export devices and client in threat 360 page	To export devices and client in threat 360 page	Passed	

Assurance workflow changes to support Device RMA

Logical ID	Title	Description	Status	Defect ID
DNACJ22S_Reg_338	Provision network devices in DNAC using Inventory & PNP flow	To provision network devices in DNAC using Inventory & PNP flow	Passed	
DNACJ22S_Reg_339	Perform the RMA flow in DNAC and verify the details	To Perform the RMA flow in DNAC and verify the details	Passed	
DNACJ22S_Reg_340	Check if device is marked/unmarked for replacement based on chosen option	To Check if device is marked/unmarked for replacement based on chosen option	Passed	
DNACJ22S_Reg_341	Mark a reachable device for replacement and check the behaviour.	To mark a reachable device for replacement and check the behaviour.	Passed	
DNACJ22S_Reg_342	Monitor replacement status of marked device	To monitor replacement status of marked device	Passed	
DNACJ22S_Reg_343	Adding new unclaimed device during replacement	To add a new unclaimed device during device replacement	Passed	
DNACJ22S_Reg_344	Try adding device with different platform id as a replacement	To try adding device with different platform id as a replacement	Passed	
DNACJ22S_Reg_345	Check if marked for replacement device can be used as replacement	To check if marked for replacement device can be used as replacement	Passed	

Assurance workflow changes to support AP Refresh

Logical ID	Title	Description	Status	Defect ID
------------	-------	-------------	--------	-----------

DNACJ22S_Reg_346	Provision network devices in DNAC using Inventory & PNP flow	To provision network devices in DNAC using Inventory & PNP flow	Passed	
DNACJ22S_Reg_347	Perform AP Refresh flow in DNAC and verify the details	To perform AP Refresh flow in DNAC and verify the details	Passed	
DNACJ22S_Reg_348	Check the report after Ap Refresh process is done	To verify AP details in report after ap replacement	Passed	
DNACJ22S_Reg_349	AP Refresh process using different model AP(9115 to 9130)	To verify AP Refresh with different AP model	Passed	
DNACJ22S_Reg_350	Verify AP refresh works fine for all model APs	Verify AP refresh works fine for all model APs	Passed	
DNACJ22S_Reg_351	Choosing new AP from same controller for AP refresh	To choose new AP from same controller for AP refresh	Passed	
DNACJ22S_Reg_352	Choosing new AP from different controller for AP refresh	To choose new AP from different controller for AP refresh	Passed	
DNACJ22S_Reg_353	Perform AP refresh process for bulk amount of AP's	To perform AP refresh process for bulk amount of AP's	Passed	

Client Sessions Report

Logical ID	Title	Description	Status	Defect ID
DNACJ22S_Reg_354	Adding network devices in DNAC	To add network devices like switches, Controllers to DNAC and check if the network devices gets added to DNAC or not	Passed	
DNACJ22S_Reg_355	Client Report generation using template	To generate report using template and check if the report is generated or not	Passed	

DNACJ22S_Reg_356	Validating the client session details in generated report	To validate details of client session generated report	Passed	
DNACJ22S_Reg_357	Connecting a Android client and generate Client session Report	To connect a android to a WLAN and generate client session report using template and check if the report is generated or not	Passed	
DNACJ22S_Reg_358	Connecting a Windows client and generate Client session Report	To connect a Windows to a WLAN and generate client session report using template and check if the report is generated or not	Passed	
DNACJ22S_Reg_359	Connecting a iPhone client and generate Client session Report	To connect a iPhone to a WLAN and generate client session report using template and check if the report is generated or not	Passed	
DNACJ22S_Reg_360	Connecting a MAC client and generate Client session Report	To connect a MAC to a WLAN and generate client session report using template and check if the report is generated or not	Passed	
DNACJ22S_Reg_361	Check if the client session report generated for client connected with open security	To verify if the client session report generated for client connected with open security and validate the report generated	Passed	
DNACJ22S_Reg_362	Check if the client session report generated for client connected with Static WEP security	To verify if the client session report generated for client connected with Static WEP security and validate the report generated	Passed	

DNACJ22S_Reg_363	Check if the client session report generated for client connected with WPA2+WPA3 security	To verify if the client session report generated for client connected with WPA2+WPA3 security and validate the report generated	Passed	
DNACJ22S_Reg_364	Check if the client session report generated for client connected with WPA3 security	To verify if the client session report generated for client connected with WPA3 security and validate the report generated	Passed	
DNACJ22S_Reg_365	Joining client to 9115 AP and generating a client summary report	To join a client to 9115 AP and generate client summary report and check if the details of the clients are shown in the report	Passed	
DNACJ22S_Reg_366	Joining client to 9120 AP and generating a client summary report	To join a client to 9120 AP and generate client summary report and check if the details of the clients are shown in the report	Passed	
DNACJ22S_Reg_367	Joining client to 9130 AP and generating a client summary report	To join a client to 9130 AP and generate client summary report and check if the details of the clients are shown in the report	Passed	
DNACJ22S_Reg_368	Generate report with different custom time range values.	To generate report with different custom time range values.	Passed	
DNACJ22S_Reg_369	Delete report using delete option under action tab	To delete report using delete option under action tab	Passed	
DNACJ22S_Reg_370	Trigger report generation using Run now option	To trigger report generation using Run now option	Passed	

Executive Summary Report - Phase 2

Logical ID	Title	Description	Status	Defect ID
DNACJ22S_Reg_371	Configuring DNAC with Network devices, clients, access points.	To configure DNAC with Network devices, clients, access points.	Passed	
DNACJ22S_Reg_372	Report generation using template	To do report generation using template	Passed	
DNACJ22S_Reg_373	Validate details in generated report	To validate details in generated report	Passed	
DNACJ22S_Reg_374	Adding multiple locations during report generation.	To add multiple locations during report generation.	Passed	
DNACJ22S_Reg_375	Verify client details in generated report.	To verify client details in generated report.	Passed	
DNACJ22S_Reg_376	Connect Android client and check if it is shown in the generated report.	To connect Android client and check if it is shown in the generated report.	Passed	
DNACJ22S_Reg_377	Connect iPhone client and check if it is shown in the generated report.	To connect iPhone client and check if it is shown in the generated report.	Passed	
DNACJ22S_Reg_378	Connect Mac client and check if it is shown in the generated report.	To connect Mac client and check if it is shown in the generated report.	Passed	
DNACJ22S_Reg_379	Check details of connected clients to 2.4Ghz & 5Ghz bands.	To check details of connected clients to 2.4Ghz & 5Ghz bands.	Passed	
DNACJ22S_Reg_380	Check device details with bad health in generated report.	To check device details with bad health in generated report.	Passed	
DNACJ22S_Reg_381	Check if device inventory is updated in report with addition of network devices/clients.	To check if device inventory is updated in report with addition of network devices/clients.	Passed	

DNACJ22S_Reg_382	Generate report with different time range values.	To generate report with different time range values.	Passed	
DNACJ22S_Reg_383	Generate report with different custom time range values.	To generate report with different custom time range values.	Passed	
DNACJ22S_Reg_384	Schedule report generation using template	To schedule report generation using template	Passed	
DNACJ22S_Reg_385	Schedule recurring report generation using template	To schedule recurring report generation using template	Passed	
DNACJ22S_Reg_386	Email report option during report generation	To check Email report option during report generation	Passed	
DNACJ22S_Reg_387	Webhook notification during report generation	To check webhook notification during report generation	Passed	
DNACJ22S_Reg_388	Edit config of generated report template	To edit config of generated report template	Passed	
DNACJ22S_Reg_389	Duplicate report option using existing report	To duplicate report option using existing report	Passed	
DNACJ22S_Reg_390	Trigger report generation using Run now option	To trigger report generation using Run now option	Passed	
DNACJ22S_Reg_391	Delete report using delete option under action tab	To delete report using delete option under action tab	Passed	

Client Trend Report

Logical ID	Title	Description	Status	Defect ID
DNACJ22S_Reg_392	Adding network devices in DNAC	To add network devices like switches, Controllers to DNAC and check if the network devices gets added to DNAC or not	Passed	

DNACJ22S_Reg_393	Client Report generation using template	To generate report using template and check if the report is generated or not	Passed	
DNACJ22S_Reg_394	Validating the client Trend Trends in generated report	To validate Trends of client Trend generated report	Passed	
DNACJ22S_Reg_395	Connecting a Android client and generate Client Trend Report	To connect a android to a WLAN and generate client Trend report using template and check if the report is generated or not	Passed	
DNACJ22S_Reg_396	Connecting a Windows client and generate Client Trend Report	To connect a Windows to a WLAN and generate client Trend report using template and check if the report is generated or not	Passed	
DNACJ22S_Reg_397	Connecting a iPhone client and generate Client Trend Report	To connect a iPhone to a WLAN and generate client Trend report using template and check if the report is generated or not	Passed	
DNACJ22S_Reg_398	Connecting a MAC client and generate Client Trend Report	To connect a MAC to a WLAN and generate client Trend report using template and check if the report is generated or not	Passed	
DNACJ22S_Reg_399	Check if the client Trend report generated for client connected with open security	To verify if the client Trend report generated for client connected with open security and validate the report generated	Passed	

DNACJ22S_Reg_400	Check if the client Trend report generated for client connected with Static WEP security	To verify if the client Trend report generated for client connected with Static WEP security and validate the report generated	Passed	
DNACJ22S_Reg_401	Check if the client Trend report generated for client connected with WPA2+WPA3 security	To verify if the client Trend report generated for client connected with WPA2+WPA3 security and validate the report generated	Passed	
DNACJ22S_Reg_402	Check if the client Trend report generated for client connected with WPA3 security	To verify if the client Trend report generated for client connected with WPA3 security and validate the report generated	Passed	
DNACJ22S_Reg_403	Generate report with different custom time range values.	To generate report with different custom time range values.	Passed	
DNACJ22S_Reg_404	Delete report using delete option under action tab	To delete report using delete option under action tab	Passed	
DNACJ22S_Reg_405	Trigger report generation using Run now option	To trigger report generation using Run now option	Passed	
DNACJ22S_Reg_406	Check Trends of connected clients to 2.4Ghz & 5Ghz bands.	To check Trends of connected clients to 2.4Ghz & 5Ghz bands.	Passed	

Client Detail Report

Logical ID	Title	Description	Status	Defect ID
------------	-------	-------------	--------	-----------

DNACJ22S_Reg_407	Adding network devices in DNAC	To add network devices like switches, Controllers to DNAC and check if the network devices gets added to DNAC or not	Passed	
DNACJ22S_Reg_408	Client Report generation using template	To generate report using template and check if the report is generated or not	Passed	
DNACJ22S_Reg_409	Validating the client Detail details in generated report	To validate details of client Detail generated report	Passed	
DNACJ22S_Reg_410	Connecting a Android client and generate Client Detail Report	To connect a android to a WLAN and generate client Detail report using template and check if the report is generated or not	Passed	
DNACJ22S_Reg_411	Connecting a Windows client and generate Client Detail Report	To connect a Windows to a WLAN and generate client Detail report using template and check if the report is generated or not	Passed	
DNACJ22S_Reg_412	Connecting a iPhone client and generate Client Detail Report	To connect a iPhone to a WLAN and generate client Detail report using template and check if the report is generated or not	Passed	
DNACJ22S_Reg_413	Connecting a MAC client and generate Client Detail Report	To connect a MAC to a WLAN and generate client Detail report using template and check if the report is generated or not	Passed	

DNACJ22S_Reg_414	Check if the client Detail report generated for client connected with open security	To verify if the client Detail report generated for client connected with open security and validate the report generated	Passed	
DNACJ22S_Reg_415	Check if the client Detail report generated for client connected with Static WEP security	To verify if the client Detail report generated for client connected with Static WEP security and validate the report generated	Passed	
DNACJ22S_Reg_416	Check if the client Detail report generated for client connected with WPA2+WPA3 security	To verify if the client Detail report generated for client connected with WPA2+WPA3 security and validate the report generated	Passed	
DNACJ22S_Reg_417	Check if the client Detail report generated for client connected with WPA3 security	To verify if the client Detail report generated for client connected with WPA3 security and validate the report generated	Passed	
DNACJ22S_Reg_418	Joining client to 9115 AP and generating a client summary report	To join a client to 9115 AP and generate client summary report and check if the details of the clients are shown in the report	Passed	
DNACJ22S_Reg_419	Joining client to 9120 AP and generating a client summary report	To join a client to 9120 AP and generate client summary report and check if the details of the clients are shown in the report	Passed	
DNACJ22S_Reg_420	Joining client to 9130 AP and generating a client summary report	To join a client to 9130 AP and generate client summary report and check if the details of the clients are shown in the report	Passed	

DNACJ22S_Reg_421	Generate report with different custom time range values.	To generate report with different custom time range values.	Passed	
DNACJ22S_Reg_422	Delete report using delete option under action tab	To delete report using delete option under action tab	Passed	
DNACJ22S_Reg_423	Trigger report generation using Run now option	To trigger report generation using Run now option	Passed	
DNACJ22S_Reg_424	Check details of connected clients to 2.4Ghz & 5Ghz bands.	To check details of connected clients to 2.4Ghz & 5Ghz bands.	Passed	

AP detail Report

Logical ID	Title	Description	Status	Defect ID
DNACJ22S_Reg_425	Configuring DNAC with Network devices, clients, access points.	To configure DNAC with Network devices, clients, access points.	Passed	
DNACJ22S_Reg_426	Report generation using template	To do report generation using template	Passed	
DNACJ22S_Reg_427	Validate details in generated report	To validate details in generated report	Passed	
DNACJ22S_Reg_428	Adding multiple locations during report generation.	To add multiple locations during report generation.	Passed	
DNACJ22S_Reg_429	Verify AP details in generated report.	To verify AP details in generated report.	Passed	
DNACJ22S_Reg_430	Verify client count in generated report.	To verify client count in generated report.	Passed	
DNACJ22S_Reg_431	Associate a new AP to controller and check AP details in report	To associate a new AP to controller and check AP details in report	Passed	
DNACJ22S_Reg_432	Check AP OS version after association with a controller	To check AP OS version after association with a controller	Passed	

DNACJ22S_Reg_433	Change AP mode and check details in generated report	To change AP mode and check details in generated report	Passed	
DNACJ22S_Reg_434	Unregister an AP and check details in generated report	To unregister an AP and check details in generated report	Passed	
DNACJ22S_Reg_435	Generate report with different time range values.	To generate report with different time range values.	Passed	
DNACJ22S_Reg_436	Generate report with different custom time range values.	To generate report with different custom time range values.	Passed	
DNACJ22S_Reg_437	Schedule report generation using template	To schedule report generation using template	Passed	
DNACJ22S_Reg_438	Schedule recurring report generation using template	To schedule recurring report generation using template	Passed	
DNACJ22S_Reg_439	Email report option during report generation	To check Email report option during report generation	Passed	
DNACJ22S_Reg_440	Webhook notification during report generation	To check webhook notification during report generation	Passed	
DNACJ22S_Reg_441	Edit config of generated report template	To edit config of generated report template	Passed	
DNACJ22S_Reg_442	Duplicate report option using existing report	To duplicate report option using existing report	Passed	
DNACJ22S_Reg_443	Trigger report generation using Run now option	To trigger report generation using Run now option	Passed	
DNACJ22S_Reg_444	Delete report using delete option under action tab	To delete report using delete option under action tab	Passed	

Support for Cisco Embedded Wireless Controller

Logical ID	Title	Description	Status	Defect ID
------------	-------	-------------	--------	-----------

DNACJ22S_Reg_228	Verifying device details in inventory after added/discovered in cisco DNA	To verify whether the device details are showing in inventory after added in cisco DNA	Passed	
DNACJ22S_Reg_229	Monitoring the devices after adding in cisco DNA and verifying same in eWC	Verifying whether added devices properly assured or monitoring in cisco DNA	Passed	
DNACJ22S_Reg_230	Discovering multiple devices in cisco DNA and check for the same count in monitored devices	Checking whether count of wireless devices are added in Cisco DNA and they are monitored properly or not	Passed	
DNACJ22S_Reg_231	Checking AP devices in inventory after Wireless controller discovered in cisco DNA	To verify whether all AP's details showing in inventory after device discovered	Passed	
DNACJ22S_Reg_232	Checking the AP's count in network health after successfully added in inventory	To verify AP's count in Assurance dashboard after added in inventory	Passed	
DNACJ22S_Reg_233	Resync the cisco DNA and checking for the newly added AP's count in device	To verify newly added AP's count in cisco DNA after resync	Passed	
DNACJ22S_Reg_234	Exporting the inventory details from cisco DNA	To verify whether user able to export the device inventory details or not	Passed	
DNACJ22S_Reg_235	Importing the inventory details to device from computer in cisco DNA	To verify whether user able to import the device inventory details or not	Passed	
DNACJ22S_Reg_236	Running the commands in cisco DNA using command runner	To check the output for device commands after run in command runner in cisco DNA	Passed	

DNACJ22S_Reg_237	Deleting the device from inventory in cisco DNA	To check whether user able to delete the device from inventory or not	Passed	
DNACJ22S_Reg_238	Checking the device reachability status in inventory after make the device down	To check whether reachability status change to "unreachable" or not when device is down	Passed	
DNACJ22S_Reg_239	Adding site and provisioning device	To check whether user able to create site and provision device	Passed	
DNACJ22S_Reg_240	Positioning AP's on site with different radios	To check AP's positioning after positioned with different radios	Passed	
DNACJ22S_Reg_241	Checking for internal AP details after device added discovered	To verify whether EWC device showing as AP or not in inventory	Passed	
DNACJ22S_Reg_242	Connecting the clients to AP's and checking the client count in Dashboard	To verify the client details in client Health after connected to AP	Passed	
DNACJ22S_Reg_243	Provisioning the EWC in day0 via PnP profile and bring device day1	Verify that user is able to Provisioned the EWC in day0 via PnP profile or not	Passed	
DNACJ22S_Reg_244	Adding the ME in DNA-C via inventory method	Verify that user is able to add ME in DNA-C via inventory method or not	Passed	
DNACJ22S_Reg_245	Exporting the CSV file of EWC from DNAC using Credential export type	To check whether the exported CSV file using Credential export type has correct information of eWLC_ME	Passed	

DNACJ22S_Reg_246	Adding EWC to DNAC by Importing CSV file using Credential export type	To check whether the user is able to add eWLC_ME device in DNA-C by importing CSV file exported using Credential export type	Passed	
DNACJ22S_Reg_247	Exporting the CSV file of EWC from DNAC using data export type	To check whether the exported CSV file using data export type has correct information of eWLC_ME	Passed	

New AP Support(ICAP)

Logical ID	Title	Description	Status	Defect ID
DNACJ22S_Reg_56	Adding Cataylast AP's in Controller & checking the AP details in DNAC	To check whether cataylast AP's details are showing or not in DNAC	Passed	
DNACJ22S_Reg_57	Associating 9130 AP with different country code as with eWLC and cheeking the AP details	To associate 9130 AP with different country code and check if the AP does not get joined in DNAC	Passed	
DNACJ22S_Reg_58	Configuring 9115/9120/9130 AP with duplicate IP	To configure AP with a duplicate IP address and check if the AP shows error message or not.	Passed	
DNACJ22S_Reg_59	Connecting a Windows client to the Catalyst AP	To connect a window client to the AP and check the client connectivity in DNAC	Passed	
DNACJ22S_Reg_60	Connecting a Android client to the Catalyst AP	To connect a Android client to the AP and check the client connectivity in DNAC	Passed	

DNACJ22S_Reg_61	Connecting a IOS client to the catalyst AP	To connect a IOS client to the AP and check the client connectivity in DNAC	Passed	
DNACJ22S_Reg_62	Connecting a MAC client to the catalyst AP	To connect a MAC client to the AP and check the client connectivity in DNAC	Passed	
DNACJ22S_Reg_63	Changing the 9115 AP from Flexconnect to Local mode and check if the AP reboot	To check if the 9115 AP reboots when AP mode is changed from flexconnect to Local mode .	Passed	
DNACJ22S_Reg_64	Checking FlexConnect Local Switching and Local Auth works properly	To check if FlexConnect Local Switching and Local Auth works in Catalyst Ap and check if the clients gets locally authenticated and switched locally	Passed	
DNACJ22S_Reg_65	Rebooting the catalyst AP's	To check if the Catalyst AP gets Rebooted or not and check if the AP joins the controller again.	Passed	
DNACJ22S_Reg_66	Rebooting the 9115 AP with primary controller given in High Availability	To reboot the 9115 AP by giving the primary controller IP using high availability and check if the AP joins the primary controller	Passed	
DNACJ22S_Reg_67	Checking the details of the Catalyst AP & the Client connectivity through the CLI	To check the details of the catalyst AP & client connectivity using CLI	Passed	
DNACJ22S_Reg_68	Monitoring the intra client Roaming details in DNAC with catalyst AP's	To verify whether the client is roaming between Catalyst AP's or not	Passed	

Config Wireless

Logical ID	Title	Description	Status	Defect ID
DNACJ2221S_config_1	Command Add button is not working in Tools->Command Runner Page	To check wheather the commands are added or not in command Runner page	Passed	
DNACJ2221S_config_2	Permit /deny implicit action check box not working in pre-auth ACL	To Validate r the check box in pre-auth ACL	Failed	CSCvw94374
DNACJ2221S_config_3	Vmanage page needs to be translated for Japanese locale	To check Vmanage page translated in Japanese or not	Failed	CSCvw52246
DNACJ2221S_config_4	Code values displayed on system settings high availability page	To Verify whether the Code values displayed on system settings high availability page	Failed	CSCvw89634



CHAPTER 5

Related Documentation

- [Related Documentation](#), on page 81

Related Documentation

CME 8.10 Release Notes

https://www.cisco.com/c/en/us/td/docs/wireless/access_point/mob_exp/810/release_notes/b_ME_RN_810.html

WLC 8.10 Configuration Guide

https://www.cisco.com/c/en/us/td/docs/wireless/controller/8-10/config-guide/b_cg810.html

CMX 10.6 Configuration Guide

https://www.cisco.com/c/en/us/td/docs/wireless/mse/10-6/cmx_config/b_cg_cmx106/getting_started_with_cisco_cmx.html

PI 3.8 User Guide

<https://www.cisco.com/c/en/us/support/cloud-systems-management/prime-infrastructure-3-8/model.html>

ISE 3.0 Release Notes

https://www.cisco.com/c/en/us/td/docs/security/ise/3-0/release_notes/b_ise_30_rn.html

Cisco Catalyst 9800 Series Wireless Controller Software Configuration Guide

https://www.cisco.com/c/en/us/td/docs/wireless/controller/9800/17-3/config-guide/b_wl_17_3_cg.html

Cisco Catalyst 9800 Series Wireless Controller 17.3 Configuration Guide

https://www.cisco.com/c/en/us/td/docs/wireless/controller/9800/17-3/config-guide/b_wl_17_3_cg.html

Cisco Catalyst 9800 Series Wireless Controller 17.3 Release Notes

<https://www.cisco.com/c/en/us/td/docs/wireless/controller/9800/17-3/release-notes/rn-17-3-9800.html>

Release Notes for Cisco Digital Network Architecture Spaces

<https://www.cisco.com/c/en/us/td/docs/wireless/cisco-dna-spaces/release-notes/cisco-dnaspaces-aug20.html>

Release Notes Cisco Digital Network Architecture Center

https://www.cisco.com/c/en/us/td/docs/cloud-systems-management/network-automation-and-management/dna-center/2-1-2/release_notes/b_cisco_dna_center_rn_2_1_2.html

Cisco Catalyst 9600 Series Switches 17.3 Release Notes

https://www.cisco.com/c/en/us/td/docs/switches/lan/catalyst9600/software/release/17-3/release_notes/ol-17-3-9600.html