



**REVIEW DRAFT - CISCO CONFIDENTIAL**



## **Test Results Summary for Cisco DNA Center (Release Version 2.1.2 )**

**First Published:** 2020-07-23

**Last Modified:** 2020-07-24

### **Americas Headquarters**

Cisco Systems, Inc.  
170 West Tasman Drive  
San Jose, CA 95134-1706  
USA  
<http://www.cisco.com>  
Tel: 408 526-4000  
800 553-NETS (6387)  
Fax: 408 527-0883





## CONTENTS

---

### CHAPTER 1

#### Overview 1

DNA Center test 1

---

### CHAPTER 2

#### Test Topology and Environment Matrix 7

Test Topology 7

Component Matrix 8

What's New ? 10

Open Caveats 11

Resolved Caveats 12

---

### CHAPTER 3

#### New Features 13

Support for Cisco Embedded Wireless Controller 13

Inventory 16

Samsung Device Support 18

New AP Support(ICAP) 20

AP Upgrade Flow 20

AP RMA 21

Basic Reporting for Rogue 23

Assurance workflow changes to support Device RMA 24

Assurance workflow changes to support AP Refresh 25

Client Detail Report 26

Client Sessions Report 29

Client Trend Report 31

Executive Summary Report - Phase 2 33

AP detail Report 35

**REVIEW DRAFT - CISCO CONFIDENTIAL**

---

<b>CHAPTER 4</b>	<b>Regression Features - Test Summary</b>	<b>37</b>
	Overall & Network Health Dashboard	37
	Client and Application Health Dashboard	40
	Predefined Report	42
	Wireless Sensor Dashboard	44
	Client 360° & Device 360°	45
	SWIM	46
	PnP	47
	New AP Support	48
	Cisco Catalyst 9800-L Wireless Controller Support	50
	Rolling AP upgrade	52
	Mobility configuration	54
	Guest web passthrough	55
	CMX Support	56
	DNA Spaces Support	57
	DNAC support for eWLC	59
	RSSI and SNR in ASSOC request	61
	Config Wireless	63

---

<b>CHAPTER 5</b>	<b>Related Documentation</b>	<b>65</b>
	Related Documentation	65



# CHAPTER 1

## Overview

---

- [DNA Center test](#) , on page 1

## DNA Center test

DNA Center test , an integral part of the enterprise wireless solution, is a program that validates various Cisco Wireless Products and Features. This is achieved by testing the latest versions of Cisco wireless products

Cisco DNA Center for Japan , in turn is an add-on testing at the solution level, where the requirements gathered are specific to Japanese usage and market. The requirements are derived based on the following:

- New features in DNA Center 2.1.2
- High priority scenarios and basic regression features
- Inputs from Cisco SEs/ TAC

The test execution is carried out on selected Cisco Wireless LAN products, which affect the Japanese segment that are prioritized by Cisco Japan team.

The following products are covered in the test execution:

- Cisco DNA Center
- Cisco Catalyst 9800 Series Wireless Controller
- Cisco Virtual Elastic Wireless LAN Controller 9800
- Cisco Catalyst 9800-CL
- Cisco Embedded Wireless Controller on Catalyst Access Points
- Cisco Wireless LAN Controller 8540
- Cisco Wireless LAN Controller 5520
- Cisco Wireless LAN Controller 3504
- Cisco Mobility Express 1850
- Cisco Mobility Express 1830
- Cisco Mobility Express 1815I

**REVIEW DRAFT - CISCO CONFIDENTIAL**

- Cisco Mobility Express 2800
- Cisco Mobility Express 3800
- Cisco Mobility Express 4800
- Cisco Mobility Express 1562
- APIC-EM Controller appliance
- Connected Mobile Experiences (CMX)
- Cisco Prime Infrastructure (Physical-UCS,VM)
- ISE(VM)
- 9800 Controller
- Cisco ISR 1100
- Cisco AP c9115
- Cisco AP c9120
- Cisco AP c9130
- Autonomous AP
- Access Point 4800
- Access Point 3800
- Access Point 2800
- Access Point 3700
- Access Point 2700
- Access Point 1700
- Access Point 1570
- Access Point 1542
- Access Point 1530
- Access Point 702I
- Access Point 1850
- Access Point 1830
- Access Point 1815I
- Access Point 1815W
- Access Point 1810

**REVIEW DRAFT - CISCO CONFIDENTIAL****Acronyms**

<b>Acronym</b>	<b>Description</b>
AAA	Authentication Authorization and Accounting
ACL	Access Control List
ACS	Access Control Server
AKM	Authentication Key Management
AP	Access Point
API	Application Programming Interface
APIC-EM	Application Policy Infrastructure Controller - Enterprise Module
ATF	Air-Time Fairness
AVC	Application Visibility and Control.
BGN	Bridge Group Network
BLE	Bluetooth Low Energy
BYOD	Bring Your Own Device
CA	Central Authentication
CAC	Call Admissions Control
CAPWAP	Control and Provisioning of Wireless Access Point
CCKM	Cisco Centralized Key Management
CCN	Channel Change Notification
CCX	Cisco Compatible Extensions
CDP	Cisco Discovery Protocol
CKIP	Cisco Key Integrity Protocol
CMX	Connected Mobile Experience
CVBF	Cisco Vector Beam Forming
CWA	Central Web Authentication
DCA	Dynamic Channel Assignment
DMZ	Demilitarized Zone
DNS	Domain Name System
DNA-C	Digital Network Architecture Center
DTIM	Delivery Traffic Indication Map
DSCP	Differentiated Services Code Point
DTLS	Datagram Transport Layer Security
EAP	Extensible Authentication Protocol

**REVIEW DRAFT - CISCO CONFIDENTIAL**

<b>Acronym</b>	<b>Description</b>
EULA	End User Licence Agreement
EWC	Embedded Wireless Controller
FLA	Flex Local Authentication
FLS	Flex Local Switching
FT	Fast Transition
FTP	File Transfer Protocol
FW	Firm Ware
HA	High Availability
H-REAP	Hybrid Remote Edge Access Point
IOS	Internetwork Operating System
ISE	Identity Service Engine
ISR	Integrated Services Router
LAG	Link Aggregation
LEAP	Lightweight Extensible Authentication Protocol
LSS	Location Specific Services
LWAPP	Lightweight Access Point Protocol
MAP	Mesh Access Point
MCS	Modulation Coding Scheme
MFP	Management Frame Protection
mDNS	multicast Domain Name System
MIC	Message Integrity Check
MSE	Mobility Service Engine
MTU	Maximum Transmission Unit
NAC	Network Admission Control
NAT	Network Address Translation
NBAR	Network Based Application Recognition
NCS	Network Control System
NGWC	Next Generation Wiring closet
NMSP	Network Mobility Services Protocol
OEAP	Office Extended Access Point
PEAP	Protected Extensible Authentication Protocol
PEM	Policy Enforcement Module



**REVIEW DRAFT - CISCO CONFIDENTIAL**

<b>Acronym</b>	<b>Description</b>
PI	Prime Infrastructure
PMF	Protected Management Frame
POI	Point of Interest
PPPoE	Point-to-Point Protocol over Ethernet
PSK	Pre-shared Key
QOS	Quality of service
RADIUS	Remote Authentication Dial-In User Service
RAP	Root Access Point
RP	Redundancy Port
RRM	Radio Resource Management
SDN	Software Defined Networking
SOAP	Simple Object Access Protocol
SFTP	Secure File Transfer Protocol
SNMP	Simple Network Management Protocol
SS	Spatial Stream
SSID	Service Set Identifier
SSO	Single Sign On
SSO	Stateful Switch Over
SWIM	Software Image Management
TACACS	Terminal Access Controller Access Control System
TCP	Transmission Control Protocol
TFTP	Trivial File Transfer Protocol
TLS	Transport Layer Security
UDP	User Datagram Protocol
vWLC	Virtual Wireless LAN Controller
VPC	Virtual port channel
VPN	Virtual Private Network
WEP	Wired Equivalent Privacy
WGB	Workgroup Bridge
wIPS	Wireless Intrusion Prevention System
WLAN	Wireless LAN
WLC	Wireless LAN Controller

**REVIEW DRAFT - CISCO CONFIDENTIAL**

<b>Acronym</b>	<b>Description</b>
WPA	Wi-Fi Protected Access
WSM	Wireless Security Module

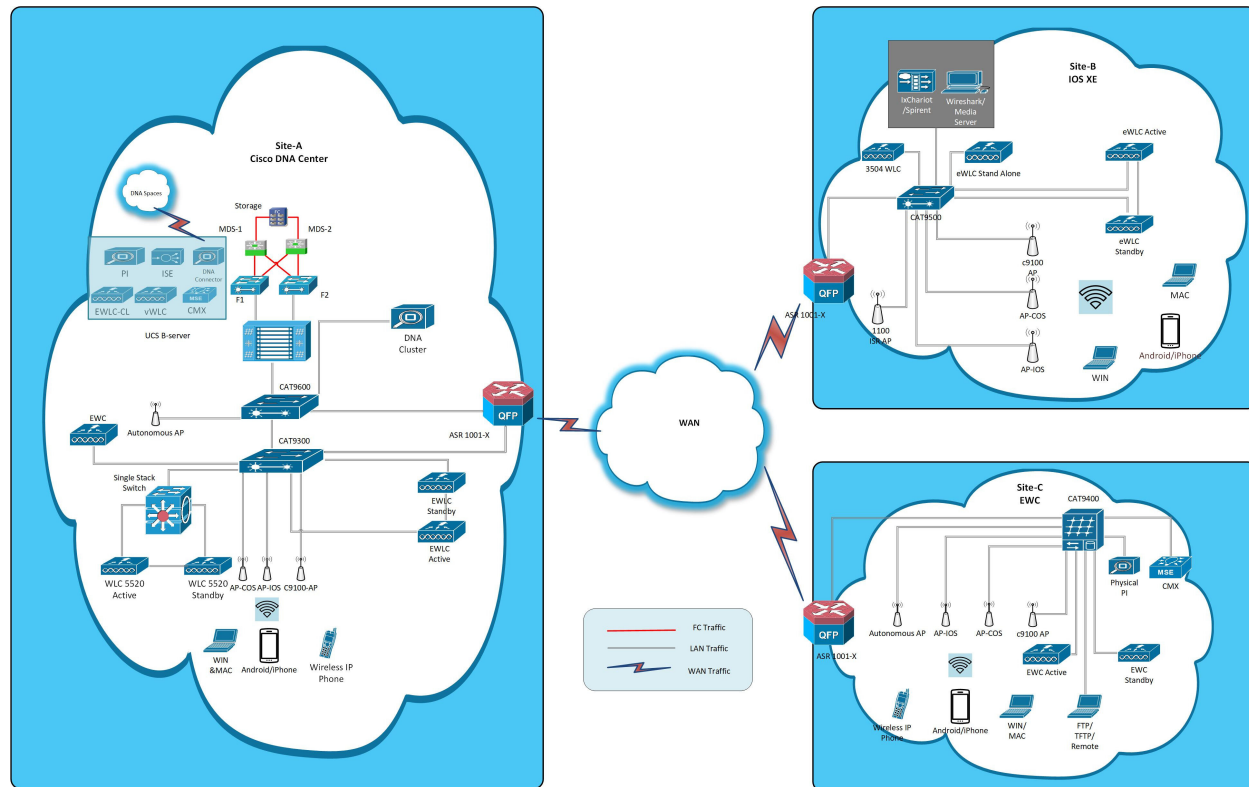


# CHAPTER 2

## Test Topology and Environment Matrix

- Test Topology, on page 7
- Component Matrix, on page 8
- What's New ?, on page 10
- Open Caveats, on page 11
- Resolved Caveats, on page 12

### Test Topology



**REVIEW DRAFT - CISCO CONFIDENTIAL****Component Matrix**

Category	Component	Version
Controller	Cisco Elastic Wireless LAN Controller 9800	17.3
	Cisco Virtual Elastic Wireless LAN Controller 9800	17.3
	Cisco Catalyst 9800-L Wireless Controller	17.3
	Cisco Embedded Wireless Controller on Catalyst Access Points	17.3
	Wireless LAN Controller 8540	8.10.105.0
	Wireless LAN controller 5520	8.10.105.0
	Wireless LAN controller 3504	8.10.105.0
	Virtual Controller	8.10.105.0
	CME 1562/1850/1830	8.10.105.0
	CME 4800/3800/2800	8.10.105.0
Applications	DNA Center	2.1.2
	ISE(VM)	2.7
	CMX(Physical (3375), VM)	10.6
	Prime Infrastructure (Virtual Appliance, UCS based)	3.8.0.0.284
	MSE(Physical (3365), VM)	8.0.150.0
	APIC-EM Controller appliance	1.6
	Cisco Jabber for Windows, iPhone	12.6.0
	Cisco Air Provisioning App	1.4
	Cisco Wireless App	1.0.228

**REVIEW DRAFT - CISCO CONFIDENTIAL**

Category	Component	Version
Access Point	Cisco AP 9115	17.3
	Cisco AP 9120	17.3
	Cisco AP 9130	17.3
	Cisco 1100 ISR	17.3
	Cisco AP 4800	15.3
	Cisco AP 3800	15.3
	Cisco AP 2800	15.3
	Cisco AP 3700	15.3
	Cisco AP 2700	15.3
	Cisco AP 1700	15.3
	Cisco AP 1850	15.3
	Cisco AP 1830	15.3
	Cisco AP 1815	15.3
	Cisco AP 1810	15.3
	Cisco AP 1570	15.3
	Cisco AP 1562	15.3
	Cisco AP 1542	15.3
Cisco AP 1532	15.3	
Cisco AP 702I	15.3	
Switch	Cisco Cat 9300	17.3
	Cisco Cat 9200L	17.3
	Cisco Cat 9800	17.3
	Cisco 3750V2 switch	15.0(2)SE2
	Cisco Cat 6509-E	15.1(1)SY1
Chipset	5300, 6300 AGN	15.40.41.5058
	7265 AC	20.120.0
	Airport Extreme	7.9.1

**REVIEW DRAFT - CISCO CONFIDENTIAL**

Category	Component	Version
Client	Operating System(JOS)	Windows 8 & 8.1 Enterprise
		Windows XP Professional
		Windows 10
	Apple Mac Book Pro, Apple Mac Book Air (JP Locale)	Mac OS 10.15
	iPad Pro	iOS 13.3.1
	iPhone 6, 6S ,7 & 11 (JP Locale)	iOS 13.3.1
	Samsung Galaxy S7,S10, Nexus 6P, Sony Xperia XZ	Android 10.0
	Wireless IP Phone 8821	11.0.4-14
	End points	Windows 7 Enterprise
		Apple Mac 10.15
		Windows 8 & 8.1
		iPhone 6,6S ,7 & 11
		Windows 10
Samsung Galaxy S4, S7,S10, Nexus 6P, Sony Xperia		
Cisco AnyConnect VPN Client	4.8.175	
Module	Hyper location Module	NA
Active Directory	AD	Windows 2008R2 Enterprise
Call Control	Cisco Unified Communications Manager	12.5.0.99832-3/12.5.0.99832-3-1(JP)
Browsers	IE	11.0.180
	Mozilla Firefox	75
	Safari	2.1.13
	Chrome	81

## What's New ?

### Cisco DNA Center

- Support for Cisco Embedded Wireless Controller
- Inventory
- Samsung Device Support
- New AP Support(ICAP)
- AP Upgrade Flow

**REVIEW DRAFT - CISCO CONFIDENTIAL**

- AP RMA
- Basic Reporting for Rogue
- Assurance workflow changes to support Device RMA
- Assurance workflow changes to support AP Refresh
- Client Sessions Report
- Executive Summary Report - Phase 2
- Client Trend Report
- Client Detail Report
- AP detail Report

**Open Caveats**

Defect ID	Title
CSCvu85135	In Inventory Page additional scroll bar added if device is more than 10-Japanese
CSCvu87627	Client 360 graph not showing events below 0 in Japanese UI
CSCvu94732	Issue Priority Graph is not showing the occurrence level in Japanese UI
CSCvu87640	JIRA Bug: THUN-1413 -- Client protocol is empty in Client 360 page in Japanese UI
CSCvu92218	Not able to configure AP refresh workflow with helping guide
CSCvv04472	Rogue Dashboard - Multiple issues seen in filter popup across english & japanese locale
CSCvu88657	Client Device dashboard tool-tip is not shown in Japanese UI
CSCvv04422	Rogue dashboard - Actions dropdown alignment issue in Firefox
CSCvu92242	Wireless Inventory is not showing multiple variants of 4800 AP
CSCvu89100	While clicking Device 360 page symbol is showing blank page in Assurance -> Issue page
CSCvv04789	JIRA Bug: DNACP-5884 -- DNA - Location search bar doesn't work while Creating report page
CSCvv04610	Rogue dashboard - Threat details are scrollable but not the headers leading to missing details
CSCvu93053	DNAC - Global credentials are not pushed during Discovery – Netconf
CSCvu88930	In Dna spaces location hierarchy-navigation path goes missing and highlighted tab remains unchanged

**REVIEW DRAFT - CISCO CONFIDENTIAL**

CSCvu42584	Tooltip data is overlapping in threat popup - Rogue Dashboard
CSCvu89321	Overlapping of the Exit Navigation Prompt in japanese UI
CSCvv02595	Edit and Cancel buttons are overlapped in AP Refresh Workflow window in Japanese UI

**Resolved Caveats**

Defect ID	Title
CSCvu77104	Wireless network page: Text not aligned properly in Japanese GUI
CSCvu93531	Unable to change Number of hosts & implicit action in Low impact
CSCvu88539	IP based Access control policy tab is Different in English & Japanese GUI
CSCvu78046	JIRA Bug: NCP-8866 -- Activity-\u003e Tasks page not showing any details for Ap provisioning
CSCvv03548	Chrome browser issue in Health score dashboard
CSCvu85108	EWC 9130AP moves to Local mode on DNAC provisioning
CSCvu88670	Hovering on Wifi symbol shows two tooltips - both null and details
CSCvu97984	Traffic copy policies - "Description" text needs to be corrected.
CSCvu98094	Not able start the AP refresh workflow
CSCvu73332	Mark Golden option not working in DNAC
CSCvu93053	DNAC - Global credentials are not pushed during Discovery – Netconf
CSCvu89036	Take a Tour option is not working in Japanese Environment
CSCvu84842	Not showing any details for device provisioning after the successful provision
CSCvu96070	WPA2 most secure is shown Under Type of enterprise network in Japanese UI
CSCvu93085	System360 - Popup X symbol is not hidden and blocking other popups
CSCvv04529	Scrollbars visibile within system settings options





# CHAPTER 3

## New Features

- [Support for Cisco Embedded Wireless Controller, on page 13](#)
- [Inventory, on page 16](#)
- [Samsung Device Support, on page 18](#)
- [New AP Support\(ICAP\), on page 20](#)
- [AP Upgrade Flow, on page 20](#)
- [AP RMA, on page 21](#)
- [Basic Reporting for Rogue, on page 23](#)
- [Assurance workflow changes to support Device RMA, on page 24](#)
- [Assurance workflow changes to support AP Refresh, on page 25](#)
- [Client Detail Report, on page 26](#)
- [Client Sessions Report, on page 29](#)
- [Client Trend Report, on page 31](#)
- [Executive Summary Report - Phase 2, on page 33](#)
- [AP detail Report, on page 35](#)

## Support for Cisco Embedded Wireless Controller

Logical ID	Title	Description	Status	Defect ID
DNACJ21S_EWC_01	Verifying device details in inventory after added/discovered in cisco DNA	To verify whether the device details are showing in inventory after added in cisco DNA	Passed	
DNACJ21S_EWC_02	Monitoring the devices after adding in cisco DNA and verifying same in eWC	Verifying whether added devices properly assured or monitoring in cisco DNA	Passed	

**REVIEW DRAFT - CISCO CONFIDENTIAL**

DNACJ21S_EWC_03	Discovering multiple devices in cisco DNA and check for the same count in monitored devices	Checking whether count of wireless devices are added in Cisco DNA and they are monitored properly or not	Passed	
DNACJ21S_EWC_04	Checking AP devices in inventory after Wireless controller discovered in cisco DNA	To verify whether all AP's details showing in inventory after device discovered	Passed	
DNACJ21S_EWC_05	Checking the AP's count in network health after successfully added in inventory	To verify AP's count in Assurance dashboard after added in inventory	Passed	
DNACJ21S_EWC_06	Resync the cisco DNA and checking for the newly added AP's count in device	To verify newly added AP's count in cisco DNA after resync	Passed	
DNACJ21S_EWC_07	Exporting the inventory details from cisco DNA	To verify whether user able to export the device inventory details or not	Passed	
DNACJ21S_EWC_08	Importing the inventory details to device from computer in cisco DNA	To verify whether user able to import the device inventory details or not	Passed	
DNACJ21S_EWC_09	Running the commands in cisco DNA using command runner	To check the output for device commands after run in command runner in cisco DNA	Passed	
DNACJ21S_EWC_10	Deleting the device from inventory in cisco DNA	To check whether user able to delete the device from inventory or not	Passed	
DNACJ21S_EWC_11	Checking the device reachability status in inventory after make the device down	To check whether reachability status change to "unreachable" or not when device is down	Passed	

**REVIEW DRAFT - CISCO CONFIDENTIAL**

DNACJ21S_EWC_12	Adding site and provisioning device	To check whether user able to create site and provision device	Failed	CSCvu93108
DNACJ21S_EWC_13	Positioning AP's on site with different radios	To check AP's positioning after positioned with different radios	Passed	
DNACJ21S_EWC_14	Checking for internal AP details after device added discovered	To verify whether EWC device showing as AP or not in inventory	Passed	
DNACJ21S_EWC_15	Connecting the clients to AP's and checking the client count in Dashboard	To verify the client details in client Health after connected to AP	Passed	
DNACJ21S_EWC_16	Provisioning the EWC in day0 via PnP profile and bring device day1	Verify that user is able to Provisioned the EWC in day0 via PnP profile or not	Passed	
DNACJ21S_EWC_17	Adding the ME in DNA-C via inventory method	Verify that user is able to add ME in DNA-C via inventory method or not	Passed	
DNACJ21S_EWC_18	Exporting the CSV file of EWC from DNAC using Credential export type	To check whether the exported CSV file using Credential export type has correct information of eWLC_ME	Passed	
DNACJ21S_EWC_19	Adding EWC to DNAC by Importing CSV file using Credential export type	To check whether the user is able to add eWLC_ME device in DNA-C by importing CSV file exported using Credential export type	Passed	
DNACJ21S_EWC_20	Exporting the CSV file of EWC from DNAC using data export type	To check whether the exported CSV file using data export type has correct information of eWLC_ME	Passed	

**REVIEW DRAFT - CISCO CONFIDENTIAL****Inventory**

Logical ID	Title	Description	Status	Defect ID
DNACJ21S_Inv_01	Adding different network devices in DNAC	To add network devices like switches, Controllers to DNAC and check if the network devices gets added to DNAC or not	Passed	
DNACJ21S_Inv_02	Adding 9800-40 eWLC in DNAC through inventroy page	To add the 9800-40 eWLC to DNAC through Inventory page and check if the devices is added succefully or not	Passed	
DNACJ21S_Inv_03	Adding 9800-80 eWLC in DNAC through inventroy page	To add the 9800-80 eWLC to DNAC through Inventory page and check if the devices is added succefully or not	Passed	
DNACJ21S_Inv_04	Adding 9800-L eWLC in DNAC through inventroy page	To add the 9800-L eWLC to DNAC through Inventory page and check if the devices is added succefully or not	Passed	
DNACJ21S_Inv_05	Adding 9800 Virtual eWLC in DNAC through inventroy page	To add the 9800 Virtual eWLC to DNAC through Inventory page and check if the devices is added succefully or not	Passed	
DNACJ21S_Inv_06	Adding EWC in DNAC through inventroy page	To add the EWC to DNAC through Inventory page and check if the devices is added succefully or not	Passed	

**REVIEW DRAFT - CISCO CONFIDENTIAL**

DNACJ21S_Inv_07	Editing the details of the network devices added to DNAC	To edit the details of the network devices added to DNAC and check if the details are edited successfully	Passed	
DNACJ21S_Inv_08	Resyncing the network device which is added to DNAC	To resync the network device added to DNAC and check if the device is resynced or not	Passed	
DNACJ21S_Inv_09	Deleting the added network device through inventory page	To delete the network device which is added to the DNAC and check if the device is deleted from DNAC successfully	Passed	
DNACJ21S_Inv_10	Check details of the eWLC in Device 360° information button from inventory page	To check details of the eWLC in DNA Device 360° in inventory page	Failed	CSCvu85135
DNACJ21S_Inv_11	Updating the image to a network device through the inventory	To update the image of the network device added in DNAC through inventory page	Passed	
DNACJ21S_Inv_12	Checking the image update status of the network device added in the DNAC	To check the image status of the network device added in DNAC through	Passed	
DNACJ21S_Inv_13	Assigning a site to the network device	To assigning a site to the network device through the inventory page and check if the site is assigned or not	Passed	
DNACJ21S_Inv_14	Provisioning a the network device through inventory page via DNAC	To provision the network device via DNAC through the option in inventory page	Passed	

**REVIEW DRAFT - CISCO CONFIDENTIAL**

DNACJ21S_Inv_15	Importing the inventory details in DNAC	To import the details of the inventory in DNAC and check if the inventory details are imported successfully	Passed	
DNACJ21S_Inv_16	Exporting the inventory details to DNAC	To export the inventory details to DNAC and check if the details are exported successfully	Passed	
DNACJ21S_Inv_17	Downloading the upgrade readiness report from inventory page	To download the upgrade readiness report from inventory page and check the detail in the downloaded file	Passed	
DNACJ21S_Inv_18	Configuring HA WLC through DNAC inventory page	To configure HA WLC through DNAC inventory page and check if the HA is formed between WLC's	Passed	
DNACJ21S_Inv_19	Enabling Application telemetry to the network devices added in DNAC	To enable application telemetry to network device and check if the telemetry is applied to the device or not	Passed	
DNACJ21S_Inv_20	Disabling Application telemetry to the network devices added in DNAC	To disable application telemetry to network device and check if the telemetry is disabled for the device for which telemetry is enabled.	Passed	

**Samsung Device Support**

Logical ID	Title	Description	Status	Defect ID
DNACJ21S_SDS_01	Configuring DNAC with Network devices, access points.	To configure DNAC with Network devices, access points.	Passed	

**REVIEW DRAFT - CISCO CONFIDENTIAL**

DNACJ21S_SDS_02	Connect client and check client 360 dashboard details.	To connect client and check client 360 dashboard details.	Passed	
DNACJ21S_SDS_03	Connect Samsung client and check if client details are shown in Client 360 dashboard	To connect Samsung client and check if client details are shown in Client 360 dashboard	Passed	
DNACJ21S_SDS_04	Check more details of associated Samsung client	To check more details of associated Samsung client	Passed	
DNACJ21S_SDS_05	Connect Samsung client with AP in Flex mode	To connect Samsung client with AP in Flex mode	Passed	
DNACJ21S_SDS_06	Connect Samsung client with WPA2 PSK security	To connect Samsung client with WPA2 PSK security	Passed	
DNACJ21S_SDS_07	Connect Samsung client with WPA3 security	To connect Samsung client with WPA3 security	Passed	
DNACJ21S_SDS_08	Monitor client stats in client 360 dashboard.	To monitor client stats in client 360 dashboard.	Passed	
DNACJ21S_SDS_09	Disconnect Samsung client and check details in client 360 dashboard.	To disconnect client and check details in client 360 dashboard.	Passed	
DNACJ21S_SDS_10	Check samsung client details in Client Summary report	Check samsung client details in Client Summary report	Passed	
DNACJ21S_SDS_11	Check samsung client details in Client Session report	Check samsung client details in Client Session report	Passed	
DNACJ21S_SDS_12	Check samsung client details in Client Detail report	Check samsung client details in Client Detail report	Passed	
DNACJ21S_SDS_13	Check samsung client details in Client Trend report	Check samsung client details in Client Trend report	Passed	

**REVIEW DRAFT - CISCO CONFIDENTIAL****New AP Support(ICAP)**

Logical ID	Title	Description	Status	Defect ID
DNACJ21S_ICAP_01	Packet capture for Android client using Intelligent Capture option in APgroup	To verify the packet capture for Android client using Intelligent capture in APgroup	Failed	CSCvu93108
DNACJ21S_ICAP_02	Packet capture for Windows JOS client using Intelligent Capture option in APgroup	To verify the packet capture for Windows client using Intelligent capture in APgroup	Failed	CSCvu93108
DNACJ21S_ICAP_03	Packet capture for IOS client using Intelligent Capture option in APgroup	To verify the packet capture for IOS client using Intelligent capture in APgroup	Failed	CSCvu93108
DNACJ21S_ICAP_04	Packet capture for Mac OS client using Intelligent Capture option in APgroup	To verify the packet capture for MAC OS client using Intelligent capture in APgroup	Failed	CSCvu93108
DNACJ21S_ICAP_05	Packet capture of client when the client is connected to AP with 2.4 GHz	To capture the Packet of the client when the client is connected to AP with radio as 2.4 GHz in eWLC ME	Failed	CSCvu93108

**AP Upgrade Flow**

Logical ID	Title	Description	Status	Defect ID
DNACJ21S_APU_01	Upload AP details via GUI	To Verify the AP details uploaded or not via GUI	Passed	
DNACJ21S_APU_02	Upload AP details via CSV file	To Verify the AP details uploaded or not via CSV file	Failed	CSCvu92218



**REVIEW DRAFT - CISCO CONFIDENTIAL**

DNACJ21S_APU_03	Select multiple ap for the replacement process	To Verify the AP details uploaded or not via CSV file with multiple ap details	Passed	
DNACJ21S_APU_04	Download the report after Ap refresh process	To verify AP details in report after ap replacement	Passed	
DNACJ21S_APU_05	Selecting the candidate for New AP from same controller	To verify AP should be selected in same controller	Failed	CSCvv02595
DNACJ21S_APU_06	Selecting the candidate for New AP from different controller	To verify AP should not be selected in different controller	Passed	
DNACJ21S_APU_07	Choosing the wrong serial number for new AP	To verify the AP Refresh with wrong serial number	Passed	
DNACJ21S_APU_08	AP Refresh with same model AP(9115 to 9115)	To verify AP Refresh with same AP model	Passed	
DNACJ21S_APU_09	AP Refresh with different model AP(9115 to 9130)	To verify AP Refresh with different AP model	Passed	
DNACJ21S_APU_10	Verifying the all model AP would be replacement process	To Verify Mark replacement works fine for all model APs	Passed	
DNACJ21S_APU_11	Client association after AP Refresh	To verify Client association after refresh process	Passed	
DNACJ21S_APU_12	Validating the configuration copied in new AP	To verify the configuration after AP refresh process	Passed	

**AP RMA**

Logical ID	Title	Description	Status	Defect ID
------------	-------	-------------	--------	-----------

**REVIEW DRAFT - CISCO CONFIDENTIAL**

DNACJ21S_RMA_01	Checking A AP which was makred to replace an existing AP cannot be used for another faulty device	To Verify the AP which was makred to replace an existing AP cannot be used for another faulty device or not	Passed	
DNACJ21S_RMA_02	Verify the client association after AP RMA process	To Verify the client associate or not after RMA process	Passed	
DNACJ21S_RMA_03	Selecting the candidate for New AP whether it is already provisioned and assign to the site	To verify An AP if already provisioned or added to SITE, Wont be allowed as candidate for new AP	Failed	CSCvu84842
DNACJ21S_RMA_04	Selecting the new AP for Marked as replacement	To verify AP marked as replcement cant be allowd to be marked as a new AP	Passed	
DNACJ21S_RMA_05	Selecting the replacement AP for for new AP	To verify able to select replacement ap for new AP or not	Passed	
DNACJ21S_RMA_06	Choosing same model AP & PID as new AP	To verify Choice of new AP model is restricted to same model and PID must be exact match	Passed	
DNACJ21S_RMA_07	Deleting the marked AP from the inventory after RMA process	To verify after RMA process marked AP or deleted or not	Passed	
DNACJ21S_RMA_08	Un-Configuring the old AP config while processing AP replacement	To verify DNAC must unconfigure old APs config in case of movement of APs instead of replacement	Passed	
DNACJ21S_RMA_09	Selecting the candidate for New AP from same controller	To verify the AP should selected in same controller	Passed	

**REVIEW DRAFT - CISCO CONFIDENTIAL**

DNACJ21S_RMA_10	Selecting the candidate for New AP from different controller	To verify the AP should not selected in different controller	Passed	
DNACJ21S_RMA_11	Verifying the all model AP would be configure marked for replacement option	To Verify Mark replacement works fine for all model APs and the same reflects correctly under the marked for repalcement tab	Passed	
DNACJ21S_RMA_12	Performing multiple RMA process for same AP	To verify Multiple RMA for same AP model must not be allowed	Passed	
DNACJ21S_RMA_13	Un Marking the replacemnt AP from Marked for replacement tab	To verify Unmark for replacement must remove the device from Marked for replacement tab	Passed	
DNACJ21S_RMA_14	Validating the ip address in new AP after RMA process	To verify the ip address after RMA process	Passed	
DNACJ21S_RMA_15	Associate the client with new AP after RMA process	To verify the client associate or not after the RMA process	Passed	
DNACJ21S_RMA_16	Verify the RMA process with PnP flow	To verify the RMA process in PnP flow	Passed	
DNACJ21S_RMA_17	Verifying the credentials are same RMA process and before claim process	To verify the credential after RMA process	Passed	
DNACJ21S_RMA_18	Choosing the shedule for later replacement option for RMA process	To verify AP RMA process with schedule for later option	Passed	

**Basic Reporting for Rogue**

Logical ID	Title	Description	Status	Defect ID
------------	-------	-------------	--------	-----------

**REVIEW DRAFT - CISCO CONFIDENTIAL**

DNACJ21S_Rogue_01	Download and install Rogue management in DNAC	To download and install Rogue management in DNAC	Passed	
DNACJ21S_Rogue_02	Enabling Rogue management	To enable rogue management	Passed	
DNACJ21S_Rogue_03	Monitor the threats detected under the Rogue management dashboard	To monitor the threats detected under the Rogue management dashboard	Failed	CSCvv04422
DNACJ21S_Rogue_04	Check status of devices added after rogue config job is enabled	To check status of devices added after rogue config job is enabled	Failed	CSCvv04439
DNACJ21S_Rogue_05	Check status of existing and devices added after rogue config job is disabled	To check status of existing and devices added after rogue config job is disabled	Passed	
DNACJ21S_Rogue_06	Edit time range and verify details in dashboard	Edit time range and verify details in dashboard	Failed	CSCvu42584
DNACJ21S_Rogue_07	Using show map option in dashboard	To check show map option in Rogue dashboard.	Passed	
DNACJ21S_Rogue_08	Refresh dashboard to check if details are updated	To refresh dashboard and check if details are updated	Failed	CSCvv04472
DNACJ21S_Rogue_09	Filter threats and customize fields in rogue dashboard.	To filter threats and customize fields in rogue dashboard.	Failed	CSCvv04610
DNACJ21S_Rogue_10	Check threat 360 page details.	To check threat 360 page details.	Passed	
DNACJ21S_Rogue_11	Export devices and client in threat 360 page	To export devices and client in threat 360 page	Passed	

**Assurance workflow changes to support Device RMA**

Logical ID	Title	Description	Status	Defect ID
------------	-------	-------------	--------	-----------

**REVIEW DRAFT - CISCO CONFIDENTIAL**

DNACJ21S_AssRMA_01	Provision network devices in DNAC using Inventory & PNP flow	To provision network devices in DNAC using Inventory & PNP flow	Passed	
DNACJ21S_AssRMA_02	Perform the RMA flow in DNAC and verify the details	To Perform the RMA flow in DNAC and verify the details	Passed	
DNACJ21S_AssRMA_03	Check if device is marked/unmarked for replacement based on chosen option	To Check if device is marked/unmarked for replacement based on chosen option	Passed	
DNACJ21S_AssRMA_04	Mark a reachable device for replacement and check the behaviour.	To mark a reachable device for replacement and check the behaviour.	Passed	
DNACJ21S_AssRMA_05	Monitor replacement status of marked device	To monitor replacement status of marked device	Passed	
DNACJ21S_AssRMA_06	Adding new unclaimed device during replacement	To add a new unclaimed device during device replacement	Passed	
DNACJ21S_AssRMA_07	Try adding device with different platform id as a replacement	To try adding device with different platform id as a replacement	Passed	
DNACJ21S_AssRMA_08	Check if marked for replacement device can be used as replacement	To check if marked for replacement device can be used as replacement	Passed	

**Assurance workflow changes to support AP Refresh**

Logical ID	Title	Description	Status	Defect ID
DNACJ21S_AssAP_01	Provision network devices in DNAC using Inventory & PNP flow	To provision network devices in DNAC using Inventory & PNP flow	Passed	

**REVIEW DRAFT - CISCO CONFIDENTIAL**

DNACJ21S_AssAP_02	Perform AP Refresh flow in DNAC and verify the details	To perform AP Refresh flow in DNAC and verify the details	Passed	
DNACJ21S_AssAP_03	Check the report after Ap Refresh process is done	To verify AP details in report after ap replacement	Passed	
DNACJ21S_AssAP_04	AP Refresh process using different model AP(9115 to 9130)	To verify AP Refresh with different AP model	Passed	
DNACJ21S_AssAP_05	Verify AP refresh works fine for all model APs	Verify AP refresh works fine for all model APs	Failed	CSCvu92242
DNACJ21S_AssAP_06	Choosing new AP from same controller for AP refresh	To choose new AP from same controller for AP refresh	Passed	
DNACJ21S_AssAP_07	Choosing new AP from different controller for AP refresh	To choose new AP from different controller for AP refresh	Passed	
DNACJ21S_AssAP_08	Perform AP refresh process for bulk amount of AP's	To perform AP refresh process for bulk amount of AP's	Passed	

**Client Detail Report**

Logical ID	Title	Description	Status	Defect ID
DNACJ21S_CDR_01	Adding network devices in DNAC	To add network devices like switches, Controllers to DNAC and check if the network devices gets added to DNAC or not	Passed	
DNACJ21S_CDR_02	Client Report generation using template	To generate report using template and check if the report is generated or not	Failed	CSCvu87627
DNACJ21S_CDR_03	Validating the client Detail details in generated report	To validate details of client Detail generated report	Passed	

**REVIEW DRAFT - CISCO CONFIDENTIAL**

DNACJ21S_CDR_04	Connecting a Android client and generate Client Detail Report	To connect a android to a WLAN and generate client Detail report using template and check if the report is generated or not	Passed	
DNACJ21S_CDR_05	Connecting a Windows client and generate Client Detail Report	To connect a Windows to a WLAN and generate client Detail report using template and check if the report is generated or not	Passed	
DNACJ21S_CDR_06	Connecting a Iphone client and generate Client Detail Report	To connect a Iphone to a WLAN and generate client Detail report using template and check if the report is generated or not	Passed	
DNACJ21S_CDR_07	Connecting a MAC client and generate Client Detail Report	To connect a MAC to a WLAN and generate client Detail report using template and check if the report is generated or not	Passed	
DNACJ21S_CDR_08	Check if the client Detail report generated for client connected with open security	To verify if the client Detail report generated for client connected with open security and validate the report generated	Passed	
DNACJ21S_CDR_09	Check if the client Detail report generated for client connected with Static WEP security	To verify if the client Detail report generated for client connected with Static WEP security and validate the report generated	Passed	
DNACJ21S_CDR_10	Check if the client Detail report generated for client connected with WPA2+WPA3 security	To verify if the client Detail report generated for client connected with WPA2+WPA3 security and validate the report generated	Passed	

**REVIEW DRAFT - CISCO CONFIDENTIAL**

DNACJ21S_CDR_11	Check if the client Detail report generated for client connected with WPA3 security	To verify if the client Detail report generated for client connected with WPA3 security and validate the report generated	Passed	
DNACJ21S_CDR_12	Joining client to 9115 AP and generating a client summary report	To join a client to 9115 AP and generate client summary report and check if the details of the clients are shown in the report	Passed	
DNACJ21S_CDR_13	Joining client to 9120 AP and generating a client summary report	To join a client to 9120 AP and generate client summary report and check if the details of the clients are shown in the report	Passed	
DNACJ21S_CDR_14	Joining client to 9130 AP and generating a client summary report	To join a client to 9130 AP and generate client summary report and check if the details of the clients are shown in the report	Passed	
DNACJ21S_CDR_15	Generate report with different custom time range values.	To generate report with different custom time range values.	Passed	
DNACJ21S_CDR_16	Delete report using delete option under action tab	To delete report using delete option under action tab	Passed	
DNACJ21S_CDR_17	Trigger report generation using Run now option	To trigger report generation using Run now option	Passed	
DNACJ21S_CDR_18	Check details of connected clients to 2.4Ghz & 5Ghz bands.	To check details of connected clients to 2.4Ghz & 5Ghz bands.	Failed	CSCvu87640



**REVIEW DRAFT - CISCO CONFIDENTIAL****Client Sessions Report**

Logical ID	Title	Description	Status	Defect ID
DNACJ21S_CSR_01	Adding network devices in DNAC	To add network devices like switches, Controllers to DNAC and check if the network devices gets added to DNAC or not	Passed	
DNACJ21S_CSR_02	Client Report generation using template	To generate report using template and check if the report is generated or not	Passed	
DNACJ21S_CSR_03	Validating the client session details in generated report	To validate details of client session generated report	Failed	CSCvu88657
DNACJ21S_CSR_04	Connecting a Android client and generate Client session Report	To connect a android to a WLAN and generate client session report using template and check if the report is generated or not	Passed	
DNACJ21S_CSR_05	Connecting a Windows client and generate Client session Report	To connect a Windows to a WLAN and generate client session report using template and check if the report is generated or not	Passed	
DNACJ21S_CSR_06	Connecting a Iphone client and generate Client session Report	To connect a Iphone to a WLAN and generate client session report using template and check if the report is generated or not	Passed	
DNACJ21S_CSR_07	Connecting a MAC client and generate Client session Report	To connect a MAC to a WLAN and generate client session report using template and check if the report is generated or not	Passed	

**REVIEW DRAFT - CISCO CONFIDENTIAL**

DNACJ21S_CSR_08	Check if the client session report generated for client connected with open security	To verify if the client session report generated for client connected with open security and validate the report generated	Passed	
DNACJ21S_CSR_09	Check if the client session report generated for client connected with Static WEP security	To verify if the client session report generated for client connected with Static WEP security and validate the report generated	Passed	
DNACJ21S_CSR_10	Check if the client session report generated for client connected with WPA2+WPA3 security	To verify if the client session report generated for client connected with WPA2+WPA3 security and validate the report generated	Passed	
DNACJ21S_CSR_11	Check if the client session report generated for client connected with WPA3 security	To verify if the client session report generated for client connected with WPA3 security and validate the report generated	Passed	
DNACJ21S_CSR_12	Joining client to 9115 AP and generating a client summary report	To join a client to 9115 AP and generate client summary report and check if the details of the clients are shown in the report	Passed	
DNACJ21S_CSR_13	Joining client to 9120 AP and generating a client summary report	To join a client to 9120 AP and generate client summary report and check if the details of the clients are shown in the report	Passed	
DNACJ21S_CSR_14	Joining client to 9130 AP and generating a client summary report	To join a client to 9130 AP and generate client summary report and check if the details of the clients are shown in the report	Passed	

**REVIEW DRAFT - CISCO CONFIDENTIAL**

DNACJ21S_CSR_15	Generate report with different custom time range values.	To generate report with different custom time range values.	Passed	
DNACJ21S_CSR_16	Delete report using delete option under action tab	To delete report using delete option under action tab	Passed	
DNACJ21S_CSR_17	Trigger report generation using Run now option	To trigger report generation using Run now option	Passed	

**Client Trend Report**

Logical ID	Title	Description	Status	Defect ID
DNACJ21S_CTR_01	Adding network devices in DNAC	To add network devices like switches, Controllers to DNAC and check if the network devices gets added to DNAC or not	Passed	
DNACJ21S_CTR_02	Client Report generation using template	To generate report using template and check if the report is generated or not	Passed	
DNACJ21S_CTR_03	Validating the client Trend Trends in generated report	To validate Trends of client Trend generated report	Passed	
DNACJ21S_CTR_04	Connecting a Android client and generate Client Trend Report	To connect a android to a WLAN and generate client Trend report using template and check if the report is generated or not	Passed	
DNACJ21S_CTR_05	Connecting a Windows client and generate Client Trend Report	To connect a Windows to a WLAN and generate client Trend report using template and check if the report is generated or not	Passed	

**REVIEW DRAFT - CISCO CONFIDENTIAL**

DNACJ21S_CTR_06	Connecting a Iphone client and generate Client Trend Report	To connect a Iphone to a WLAN and generate client Trend report using template and check if the report is generated or not	Passed	
DNACJ21S_CTR_07	Connecting a MAC client and generate Client Trend Report	To connect a MAC to a WLAN and generate client Trend report using template and check if the report is generated or not	Passed	
DNACJ21S_CTR_08	Check if the client Trend report generated for client connected with open security	To verify if the client Trend report generated for client connected with open security and validate the report generated	Passed	
DNACJ21S_CTR_09	Check if the client Trend report generated for client connected with Static WEP security	To verify if the client Trend report generated for client connected with Static WEP security and validate the report generated	Passed	
DNACJ21S_CTR_10	Check if the client Trend report generated for client connected with WPA2+WPA3 security	To verify if the client Trend report generated for client connected with WPA2+WPA3 security and validate the report generated	Passed	
DNACJ21S_CTR_11	Check if the client Trend report generated for client connected with WPA3 security	To verify if the client Trend report generated for client connected with WPA3 security and validate the report generated	Passed	
DNACJ21S_CTR_12	Generate report with different custom time range values.	To generate report with different custom time range values.	Passed	

**REVIEW DRAFT - CISCO CONFIDENTIAL**

DNACJ21S_CTR_13	Delete report using delete option under action tab	To delete report using delete option under action tab	Passed	
DNACJ21S_CTR_14	Trigger report generation using Run now option	To trigger report generation using Run now option	Passed	
DNACJ21S_CTR_15	Check Trends of connected clients to 2.4Ghz & 5Ghz bands.	To check Trends of connected clients to 2.4Ghz & 5Ghz bands.	Passed	

**Executive Summary Report - Phase 2**

Logical ID	Title	Description	Status	Defect ID
DNACJ21S_ExeSum_01	Configuring DNAC with Network devices, clients, access points.	To configure DNAC with Network devices, clients, access points.	Passed	
DNACJ21S_ExeSum_02	Report generation using template	To do report generation using template	Passed	
DNACJ21S_ExeSum_03	Validate details in generated report	To validate details in generated report	Passed	
DNACJ21S_ExeSum_04	Adding multiple locations during report generation.	To add multiple locations during report generation.	Passed	
DNACJ21S_ExeSum_05	Verify client details in generated report.	To verify client details in generated report.	Passed	
DNACJ21S_ExeSum_06	Connect Android client and check if it is shown in the generated report.	To connect Android client and check if it is shown in the generated report.	Passed	
DNACJ21S_ExeSum_07	Connect iPhone client and check if it is shown in the generated report.	To connect iPhone client and check if it is shown in the generated report.	Passed	
DNACJ21S_ExeSum_08	Connect Mac client and check if it is shown in the generated report.	To connect Mac client and check if it is shown in the generated report.	Passed	

**REVIEW DRAFT - CISCO CONFIDENTIAL**

DNACJ21S_ExecSum_09	Check details of connected clients to 2.4Ghz & 5Ghz bands.	To check details of connected clients to 2.4Ghz & 5Ghz bands.	Passed	
DNACJ21S_ExecSum_10	Check device details with bad health in generated report.	To check device details with bad health in generated report.	Passed	
DNACJ21S_ExecSum_11	Check if device inventory is updated in report with addition of network devices/clients.	To check if device inventory is updated in report with addition of network devices/clients.	Passed	
DNACJ21S_ExecSum_12	Generate report with different time range values.	To generate report with different time range values.	Passed	
DNACJ21S_ExecSum_13	Generate report with different custom time range values.	To generate report with different custom time range values.	Passed	
DNACJ21S_ExecSum_14	Schedule report generation using template	To schedule report generation using template	Passed	
DNACJ21S_ExecSum_15	Schedule recurring report generation using template	To schedule recurring report generation using template	Passed	
DNACJ21S_ExecSum_16	Email report option during report generation	To check Email report option during report generation	Passed	
DNACJ21S_ExecSum_17	Webhook notification during report generation	To check webhook notification during report generation	Passed	
DNACJ21S_ExecSum_18	Edit config of generated report template	To edit config of generated report template	Passed	
DNACJ21S_ExecSum_19	Duplicate report option using existing report	To duplicate report option using existing report	Passed	
DNACJ21S_ExecSum_20	Trigger report generation using Run now option	To trigger report generation using Run now option	Passed	
DNACJ21S_ExecSum_21	Delete report using delete option under action tab	To delete report using delete option under action tab		

**REVIEW DRAFT - CISCO CONFIDENTIAL****AP detail Report**

Logical ID	Title	Description	Status	Defect ID
DNACJ21S_APdet_01	Configuring DNAC with Network devices, clients, access points.	To configure DNAC with Network devices, clients, access points.	Passed	
DNACJ21S_APdet_02	Report generation using template	To do report generation using template	Failed	CSCvv04789
DNACJ21S_APdet_03	Validate details in generated report	To validate details in generated report	Passed	
DNACJ21S_APdet_04	Adding multiple locations during report generation.	To add multiple locations during report generation.	Passed	
DNACJ21S_APdet_05	Verify AP details in generated report.	To verify AP details in generated report.	Passed	
DNACJ21S_APdet_06	Verify client count in generated report.	To verify client count in generated report.	Passed	
DNACJ21S_APdet_07	Associate a new AP to controller and check AP details in report	To associate a new AP to controller and check AP details in report	Passed	
DNACJ21S_APdet_08	Check AP OS version after association with a controller	To check AP OS version after association with a controller	Passed	
DNACJ21S_APdet_09	Change AP mode and check details in generated report	To change AP mode and check details in generated report	Passed	
DNACJ21S_APdet_10	Unregister an AP and check details in generated report	To unregister an AP and check details in generated report	Passed	
DNACJ21S_APdet_11	Generate report with different time range values.	To generate report with different time range values.	Passed	
DNACJ21S_APdet_12	Generate report with different custom time range values.	To generate report with different custom time range values.	Passed	

**REVIEW DRAFT - CISCO CONFIDENTIAL**

DNACJ21S_APdet_13	Schedule report generation using template	To schedule report generation using template	Passed	
DNACJ21S_APdet_14	Schedule recurring report generation using template	To schedule recurring report generation using template	Passed	
DNACJ21S_APdet_15	Email report option during report generation	To check Email report option during report generation	Passed	
DNACJ21S_APdet_16	Webhook notification during report generation	To check webhook notification during report generation	Passed	
DNACJ21S_APdet_17	Edit config of generated report template	To edit config of generated report template	Passed	
DNACJ21S_APdet_18	Duplicate report option using existing report	To duplicate report option using existing report	Passed	
DNACJ21S_APdet_19	Trigger report generation using Run now option	To trigger report generation using Run now option	Passed	
DNACJ21S_APdet_20	Delete report using delete option under action tab	To delete report using delete option under action tab	Passed	





## CHAPTER 4

# Regression Features - Test Summary

- Overall & Network Health Dashboard, on page 37
- Client and Application Health Dashboard, on page 40
- Predefined Report, on page 42
- Wireless Sensor Dashboard, on page 44
- Client 360° & Device 360°, on page 45
- SWIM, on page 46
- PnP, on page 47
- New AP Support, on page 48
- Cisco Catalyst 9800-L Wireless Controller Support, on page 50
- Rolling AP upgrade, on page 52
- Mobility configuration, on page 54
- Guest web passthrough, on page 55
- CMX Support, on page 56
- DNA Spaces Support, on page 57
- DNAC support for eWLC, on page 59
- RSSI and SNR in ASSOC request, on page 61
- Config Wireless, on page 63

## Overall & Network Health Dashboard

Logical ID	Title	Description	Status	Defect ID
DNACJ21S_Reg_01	Adding network devices in DNAC	To add network devices like switches, Controllers to DNAC and check if the network devices gets added to DNAC or not	Failed	CSCvv11975
DNACJ21S_Reg_02	Check if the added device is shown in the overall health dashboard	To check if the Network device added in DNAC is shown in the overall health dashboard	Passed	

**REVIEW DRAFT - CISCO CONFIDENTIAL**

DNACJ21S_Reg_03	Connecting a Windows clients to a WLAN and check if the client health ,Active clients detail is shown in the wireless Clients dashlet	To connect a Window clients to the wlan created and check if the clients health is shown in the wireless client summary	Passed	
DNACJ21S_Reg_04	Connecting a Android clients to a WLAN and check if the client health ,Active clients detail is shown in the wireless Clients dashlet	To connect a Android clients to the wlan created and check if the clients health is shown in the wireless client summary	Passed	
DNACJ21S_Reg_05	Connecting a IOS clients to a WLAN and check if the client health ,Active clients detail is shown in the wireless Clients dashlet	To connect a IOS clients to the wlan created and check if the clients health is shown in the wireless client summary	Passed	
DNACJ21S_Reg_06	Connecting a Mac OS clients to a WLAN and check if the client health ,Active clients detail is shown in the wireless Clients dashlet	To connect a Mac OS clients to the wlan created and check if the clients health is shown in the wireless client summary	Passed	
DNACJ21S_Reg_07	Connecting a clients to a WLAN with WPA + WPA2 Security and check if the client health ,Active clients detail is shown in the wireless Clients dashlet	To connect a clients to the wlan with WPA + WPA2 security and check if the clients health is shown in the wireless client summary	Passed	

**REVIEW DRAFT - CISCO CONFIDENTIAL**

DNACJ21S_Reg_08	Connecting a clients to a WLAN with WPA2 + WPA3 Security and check if the client health ,Active clients detail is shown in the wireless Clients dashlet	To connect a clients to the wlan with WPA + WPA2 security and check if the clients health is shown in the wireless client summary	Passed	
DNACJ21S_Reg_09	Connecting a clients to a WLAN with Static WEP Security and check if the client health ,Active clients detail is shown in the wireless Clients dashlet	To connect a clients to the wlan with Static WEP security and check if the clients health is shown in the wireless client summary	Passed	
DNACJ21S_Reg_10	Connecting a Wired client to a RLAN and check if the client health is shown in the wired Clients dashlet	To connect a clients to the rlan created and check if the clients health is shown in the wired client summary	Passed	
DNACJ21S_Reg_11	Check the issue shown in the Top 10 issue types	To check if the issue shown in the top 10 issue type dashlet	Passed	
DNACJ21S_Reg_12	Resolving the issue shown and checking the resolved list	To check if the issue shown in the top 10 issue type dashlet are resolved and the resolved issue are show in resolved list or not	Passed	
DNACJ21S_Reg_13	Check if the added network device is shown in the Network Health page	To check if the Network device added in DNAC is shown in the Network health dashboard	Failed	CSCvu96070
DNACJ21S_Reg_14	Validating the graphs shown for the network devices	To validate the if the graphs shown in the network health pages are correct	Failed	CSCvu94732

**REVIEW DRAFT - CISCO CONFIDENTIAL**

DNACJ21S_Reg_15	Checking the total APs count in the network device page in Total AP count dashlet	To check the total APs count in the network health page which is added in eWLC and check if the AP count are shown correctly	Passed	
DNACJ21S_Reg_16	Checking the Top N APs count in the network device page in Assurance page	To check the Top N APs count in the network health page which in added in eWLC and check if the AP count are shown correctly	Passed	
DNACJ21S_Reg_17	Validating the Top N APs by High Interference in network device in Assurance page	To validate the Top N APs by high interference in the network health page which is added in eWLC and check if the AP count are shown correctly	Passed	
DNACJ21S_Reg_18	Making a eWLC down to check if the Dashboard are updated or not	To make the eWLC down and check if the dashboards in network health are updated accordingly	Passed	
DNACJ21S_Reg_19	Deleting the eWLC with AP and the dashboards	To delete the eWLC with multiples AP and check if the dashboards are updated	Passed	

**Client and Application Health Dashboard**

Logical ID	Title	Description	Status	Defect ID
DNACJ21S_Reg_20	Adding network devices in DNAC	To add network devices like switches, Controllers to DNAC and check if the network devices gets added to DNAC or not	Failed	CSCvu89321

**REVIEW DRAFT - CISCO CONFIDENTIAL**

DNACJ21S_Reg_21	Connecting a Windows clients to a WLAN and check if the client health ,Active clients detail is shown in the wireless Clients dashlet	To connect a Window clients to the wlan created and check if the clients health is shown in the wireless client summary	Passed	
DNACJ21S_Reg_22	Connecting a Android clients to a WLAN and check if the client health ,Active clients detail is shown in the wireless Clients dashlet	To connect a Android clients to the wlan created and check if the clients health is shown in the wireless client summary	Passed	
DNACJ21S_Reg_23	Connecting a IOS clients to a WLAN and check if the client health ,Active clients detail is shown in the wireless Clients dashlet	To connect a IOS clients to the wlan created and check if the clients health is shown in the wireless client summary	Passed	
DNACJ21S_Reg_24	Connecting a Mac OS clients to a WLAN and check if the client health ,Active clients detail is shown in the wireless Clients dashlet	To connect a Mac OS clients to the wlan created and check if the clients health is shown in the wireless client summary	Passed	
DNACJ21S_Reg_25	Connecting a Wired client to a RLAN and check if the client health is shown in the wired Clients dashlet	To connect a clients to the rlan created and check if the clients health is shown in the wired client summary	Passed	
DNACJ21S_Reg_26	Validating the client onboarding times in client health page	To vaildate the client onboarding times in client health page in DNAC assurance	Passed	
DNACJ21S_Reg_27	Validating the client connectivity RSSI in client health page	To vaildate the client connectivity RSSI in client health page in DNAC assurance	Passed	

**REVIEW DRAFT - CISCO CONFIDENTIAL**

DNACJ21S_Reg_28	Validating the client connectivity SNR in client health page	To validate the client connectivity RSSI in client health page in DNAC assurance	Passed	
DNACJ21S_Reg_29	Check the client count per SSID and validating the same	To check the client count per ssid and validating the same through eWLC UI	Passed	
DNACJ21S_Reg_30	Check the client roaming times in client health dashboard in Assurance page	To check the client roaming times in client health page and check if the details show are correct.	Failed	CSCvv01671
DNACJ21S_Reg_31	Validating the client data rate in Assurance client health page	To check if the client data rate is shown in the assurance client health page and validate if the data rate shown are correct	Passed	
DNACJ21S_Reg_32	Monitor the overall application health in assurance page of DNAC	To monitor the overall application health in the assurance page	Passed	

**Predefined Report**

Logical ID	Title	Description	Status	Defect ID
DNACJ21S_Reg_41	Verifying dashboard details in Home page of DNAC after created in assurance page	To check whether the dashboard details are showing in Home page or not	Passed	
DNACJ21S_Reg_42	Adding more number of dashboards and checking the same in DNAC home page	To check whether more number of dashboards can be created or not	Passed	

**REVIEW DRAFT - CISCO CONFIDENTIAL**

DNACJ21S_Reg_43	Checking the created dashboards in DNAC	To check whether the created dashboard details are showing in My Dashboards or not	Passed	
DNACJ21S_Reg_44	Checking the Favourite dashboard in DNAC	To check whether the Favourite dashboard details are showing correct or not.	Passed	
DNACJ21S_Reg_45	Adding EWLC to DNAC & Verifying the reachability of the devices.	To check whether the EWLC is added to DNAC & also check the reachable state	Passed	
DNACJ21S_Reg_46	Connecting the clients to EWLC and checking the client details in DNAC Dashboard	To verify the client details in DNAC dashboard after Client connected to EWLC	Passed	
DNACJ21S_Reg_47	Checking the Client health in DNAC dashboard	To verify the client health in DNAC Dashboard	Passed	
DNACJ21S_Reg_48	Monitoring the intra client Roaming details in DNAC dashboard	To verify whether the client is roaming between AP's or not	Passed	
DNACJ21S_Reg_49	Monitoring the inter client Roaming details in DNAC dashboard	To verify whether the clients are roaming between controllers	Passed	
DNACJ21S_Reg_50	Verifying the Disconnected client details in DNAC dashboard	To check whether the client is disconnected or not in DNAC Dashboard	Passed	
DNACJ21S_Reg_51	Verifying the Wired client details in DNAC dashboard	To Check whether the Wired client details are showing or not in DNAC Dashboard	Passed	
DNACJ21S_Reg_52	Checking the client RSSI,Data Rate and SNR Values in DNAC Dashboard	To Check whether the client RSSI,Data Rate& SNR values showing or not in DNAC	Passed	

**REVIEW DRAFT - CISCO CONFIDENTIAL**

DNACJ21S_Reg_53	Checking the AP Status in DNAC Dashboard	To Check Whether the AP status Showing correct or not	Passed	
DNACJ21S_Reg_54	Monitoring the per SSID Client count in DNAC Dashboard	To check whether the per SSID client showing correctly or not	Passed	
DNACJ21S_Reg_55	Monitoring to which AP clients are connected and their signal strength	Verifying whether all the clients are monitored or not according to their high interface along with the APs	Passed	

**Wireless Sensor Dashboard**

Logical ID	Title	Description	Status	Defect ID
DNACJ21S_Reg_82	Monitoring to idel sensors in network	To monitor the the total idel sensors in network	Passed	
DNACJ21S_Reg_83	Monitoring to running sensors in network	To monitor the the total running sensors in network	Passed	
DNACJ21S_Reg_84	Monitoring to unreachable Sensors in network	To monitor the the total unreachable sensors in network	Passed	
DNACJ21S_Reg_85	Checking the Sensor Test result as latest and trend	To check and verify the Sensor Test result as latest and trend	Passed	
DNACJ21S_Reg_86	Checking the latest heatmap for last 30 min	To check the last 30 min heatmap view	Passed	
DNACJ21S_Reg_87	Checking the latest heatmap for last 24 hrs	To check the last 24 hrs heatmap view	Passed	
DNACJ21S_Reg_88	Checking the latest heatmap for last 7 days	To check the last 7 days heatmap view	Passed	
DNACJ21S_Reg_89	Monitoring the Statistics of (top 5) 'Worst Location'	To Monitor the Statistics of (top 5) 'Worst Location'	Passed	



**REVIEW DRAFT - CISCO CONFIDENTIAL**

DNACJ21S_Reg_90	Monitoring the Statistics of (top 5) 'Common Test Failure'	To Monitor the Statistics of (top 5) 'Common Test Failure'	Passed	
DNACJ21S_Reg_91	Monitoring the Statistics of (top 5) 'Largest Health Drop'	To Monitor the Statistics of (top 5) 'Largest Health Drop'	Passed	
DNACJ21S_Reg_92	Monitoring the sensor name, status, Last seen, Location, Backhaul type and SSH status	To Monitor the sensor name, status, Last seen, Location, Backhaul type and SSH status	Passed	

**Client 360° & Device 360°**

Logical ID	Title	Description	Status	Defect ID
DNACJ21S_Reg_33	Adding different network devices in DNAC	To add network devices like switches, Controllers to DNAC and check if the network devices gets added to DNAC or not	Passed	
DNACJ21S_Reg_34	Check details of the 9800-40 eWLC in DNAC Device 360° page	To check details of the 9800-40 eWLC in DNA Device 360°	Passed	
DNACJ21S_Reg_35	Check details of the 9800-80 eWLC in DNAC Device 360° page	To check details of the 9800-80 eWLC in DNA Device 360°	Failed	CSCvu89100
DNACJ21S_Reg_36	Check details of the 9800-L eWLC in DNAC Device 360° page	To check details of the 9800-L eWLC in DNA Device 360°	Passed	
DNACJ21S_Reg_37	Check details of the 9800-Virtual eWLC in DNAC Device 360° page	To check details of the 9800-Virtual eWLC in DNA Device 360°	Passed	
DNACJ21S_Reg_38	Check details of the EWC in DNAC Device 360° page	To check details of the 9800-40 eWLC in DNA Device 360°	Passed	

**REVIEW DRAFT - CISCO CONFIDENTIAL**

DNACJ21S_Reg_39	Check the AP count and client count of eWLC in Device 360°	To check the AP count and client count of eWLC in Device 360°	Passed	
DNACJ21S_Reg_40	Check details of the AP in eWLC using DNAC Device 360° page	To check details of the AP in eWLC using DNAC Device 360° page	Passed	

**SWIM**

Logical ID	Title	Description	Status	Defect ID
DNACJ21S_Reg_111	Importing a image from a device	To check if the images gets imported from the device or not	Passed	
DNACJ21S_Reg_112	Importing the image through the URL	To import the image using URL and check if the images gets imported or not.	Passed	
DNACJ21S_Reg_113	Import the Invalid image from a device	To import the wrong image using device and check if the images gets imported or not.	Passed	
DNACJ21S_Reg_114	Mark multiple image as golden image and verify which image upgrded with controller.	To Mark multiple image as golden image and validate controler upgrded or not	Failed	CSCvu73332
DNACJ21S_Reg_115	Schedule the time for controller upgrade	To Scheduling the time for controller and check the controller upgraded with given time or not	Passed	
DNACJ21S_Reg_116	Sheduling the time as "NOW" to upgrade the controller image	To Scheduling the time as "NOW" for controller and check the controller upgraded or not	Passed	

**REVIEW DRAFT - CISCO CONFIDENTIAL**

DNACJ21S_Reg_117	Distributing the image to different devices .	To distribute different images and check if the devices selected	Passed	
DNACJ21S_Reg_118	Associate the client with controller after upgraded	To distribute different images and check if the devices selected	Passed	
DNACJ21S_Reg_119	Generate SWIM report	To generate SWIM report and verify the details correct or not	Passed	

**PnP**

Logical ID	Title	Description	Status	Defect ID
DNACJ21S_Reg_140	View devices from the Plug and Play tab	view devices from the Plug and Play tab	Passed	
DNACJ21S_Reg_141	Provision a Switch 9300 with PnP Configuration	Configure 9300 Switch with PNP	Passed	
DNACJ21S_Reg_142	Provision a Switch 9200 L with PnP Configuration	Configure 9200 Switch with PNP	Passed	
DNACJ21S_Reg_143	Provision a Switch 9500 with PnP Configuration	Configure 9500 Switch with PNP	Passed	
DNACJ21S_Reg_144	Provision a Router with PnP Configuration	Configure ISR Router with PNP	Passed	
DNACJ21S_Reg_145	Provision a Legacy router with PnP Configuration	Legacy Configure Router with PNP	Passed	
DNACJ21S_Reg_146	Provision a CSR Router with PnP Configuration	Configure CSR Router with PNP	Passed	
DNACJ21S_Reg_147	Provision a Wireless Controller 9800-40 with PnP Configuration	Configure Wireless Controller with PNP	Passed	

**REVIEW DRAFT - CISCO CONFIDENTIAL**

DNACJ21S_Reg_148	Provision a Wireless Controller 9800-80 with PnP Configuration	Configure Wireless Controller with PNP	Passed	
DNACJ21S_Reg_149	Provision a Wireless Controller 9800-L with PnP Configuration	Configure Wireless Controller with PNP	Passed	
DNACJ21S_Reg_150	Automate onboarding Image of a Switch with Plug and Play (PnP)	Load Image to Switch with PnP	Passed	
DNACJ21S_Reg_151	Automate onboarding Image of a Router with Plug and Play (PnP)	Load Image to Router with PnP	Passed	
DNACJ21S_Reg_152	Automate onboarding Image of a Controller 9800-40 with Plug and Play (PnP)	Load Image to Wireless Controller with PnP	Passed	
DNACJ21S_Reg_153	Automate onboarding Image of a Controller 9800-80 with Plug and Play (PnP)	Load Image to Wireless Controller with PnP	Passed	
DNACJ21S_Reg_154	Automate onboarding Image of a Controller 9800-L with Plug and Play (PnP)	Load Image to Wireless Controller with PnP	Passed	

**New AP Support**

Logical ID	Title	Description	Status	Defect ID
DNACJ21S_Reg_56	Adding Cataylast AP's in Controller & checking the AP details in DNAC	To check whether cataylast AP's details are showing or not in DNAC	Passed	
DNACJ21S_Reg_57	Associating 9130 AP with different country code as with eWLC and cheking the AP details	To associate 9130 AP with different country code and check if the AP does not get joined in DNAC	Passed	

**REVIEW DRAFT - CISCO CONFIDENTIAL**

DNACJ21S_Reg_58	Configuring 9115/9120/9130 AP with duplicate IP	To configure AP with a duplicate IP address and check if the AP shows error message or not.	Passed	
DNACJ21S_Reg_59	Connecting a Windows client to the Catalyst AP	To connect a window client to the AP and check the client connectivity in DNAC	Passed	
DNACJ21S_Reg_60	Connecting a Android client to the Catalyst AP	To connect a Android client to the AP and check the client connectivity in DNAC	Passed	
DNACJ21S_Reg_61	Connecting a IOS client to the catalyst AP	To connect a IOS client to the AP and check the client connectivity in DNAC	Passed	
DNACJ21S_Reg_62	Connecting a MAC client to the catalyst AP	To connect a MAC client to the AP and check the client connectivity in DNAC	Passed	
DNACJ21S_Reg_63	Changing the 9115 AP from Flexconnect to Local mode and check if the AP reboot	To check if the 9115 AP reboots when AP mode is changed from flexconnect to Local mode .	Passed	
DNACJ21S_Reg_64	Checking FlexConnect Local Switching and Local Auth works properly	To check if FlexConnect Local Switching and Local Auth works in Catalyst Ap and check if the clients gets locally authenticated and switched locally	Passed	
DNACJ21S_Reg_65	Rebooting the catalyst AP's	To check if the Catalyst AP gets Rebooted or not and check if the AP joins the controller again.	Passed	

**REVIEW DRAFT - CISCO CONFIDENTIAL**

DNACJ21S_Reg_66	Rebooting the 9115 AP with primary controller given in High Availability	To reboot the 9115 AP by giving the primary controller IP using high availability and check if the AP joins the primary controller	Passed	
DNACJ21S_Reg_67	Checking the details of the Catalyst AP & the Client connectivity through the CLI	To check the details of the catalyst AP & client connectivity using CLI	Passed	
DNACJ21S_Reg_68	Monitoring the intra client Roaming details in DNAC with catalyst AP's	To verify whether the client is roaming between Catalyst AP's or not	Passed	

**Cisco Catalyst 9800-L Wireless Controller Support**

Logical ID	Title	Description	Status	Defect ID
DNACJ21S_Reg_120	Verifying device details in inventory after added/discovered in cisco DNA	To verify whether the device details are showing in inventory after added in cisco DNA	Passed	
DNACJ21S_Reg_121	Monitoring the devices after adding in cisco DNA and verifying same in eWC	Verifying whether added devices properly assured or monitoring in cisco DNA	Passed	
DNACJ21S_Reg_122	Discovering multiple devices in cisco DNA and check for the same count in monitored devices	Checking whether count of wireless devices are added in Cisco DNA and they are monitored properly or not	Passed	
DNACJ21S_Reg_123	Checking AP devices in inventory after Wireless controller discovered in cisco DNA	To verify whether all AP's details showing in inventory after device discovered	Passed	

**REVIEW DRAFT - CISCO CONFIDENTIAL**

DNACJ21S_Reg_124	Checking the AP's count in network health after successfully added in inventory	To verify AP's count in Assurance dashboard after added in inventory	Passed	
DNACJ21S_Reg_125	Resync the cisco DNA and checking for the newly added AP's count in device	To verify newly added AP's count in cisco DNA after resync	Passed	
DNACJ21S_Reg_126	Exporting the inventory details from cisco DNA	To verify whether user able to export the device inventory details or not	Passed	
DNACJ21S_Reg_127	Importing the inventory details to device from computer in cisco DNA	To verify whether user able to import the device inventory details or not	Passed	
DNACJ21S_Reg_128	Running the commands in cisco DNA using command runner	To check the output for device commands after run in command runner in cisco DNA	Passed	
DNACJ21S_Reg_129	Deleting the device from inventory in cisco DNA	To check whether user able to delete the device from inventory or not	Passed	
DNACJ21S_Reg_130	Checking the device reachability status in inventory after make the device down	To check whether reachability status change to "unreachable" or not when device is down	Passed	
DNACJ21S_Reg_131	Adding site and provisioning device	To check whether user able to create site and provision device	Passed	
DNACJ21S_Reg_132	Positioning AP's on site with different radios	To check AP's positioning after positioned with different radios	Passed	
DNACJ21S_Reg_133	Checking for internal AP details after device added discovered	To verify whether EWC device showing as AP or not in inventory	Passed	

**REVIEW DRAFT - CISCO CONFIDENTIAL**

DNACJ21S_Reg_134	Connecting the clients to AP's and checking the client count in Dashboard	To verify the client details in client Health after connected to AP	Passed	
DNACJ21S_Reg_135	Provisioning the ME_WC in day0 via PnP profile and bring device day1	Verify that user is able to Provisioned the EWC in day0 via PnP profile or not	Passed	
DNACJ21S_Reg_136	Adding the ME in DNA-C via inventory method	Verify that user is able to add ME in DNA-C via inventory method or not	Passed	
DNACJ21S_Reg_137	Exporting the CSV file of eWLC_ME from DNA-C using Credential export type	To check whether the exported CSV file using Credential export type has correct information of eWLC_ME	Passed	
DNACJ21S_Reg_138	Adding eWLC_ME to DNAC by Importing CSV file using Credential export type	To check whether the user is able to add eWLC_ME device in DNA-C by importing CSV file exported using Credential export type	Passed	
DNACJ21S_Reg_139	Exporting the CSV file of eWLC_ME from DNA-C using data export type	To check whether the exported CSV file using data export type has correct information of eWLC_ME	Passed	

**Rolling AP upgrade**

Logical ID	Title	Description	Status	Defect ID
DNACJ21S_Reg_93	Providing the same controller name and ip address for primary controller and N+1 controller	To check whether the same controller name is accepted or not for primary Controller and N+1 controller	Passed	



**REVIEW DRAFT - CISCO CONFIDENTIAL**

DNACJ21S_Reg_94	Upgrading the software image in a controller	To check whether the software image is upgraded in controller	Passed	
DNACJ21S_Reg_95	Scheduling the time to upgrade the software image into a controller.	To check whether the software image is upgraded into a controller in scheduling time	Passed	
DNACJ21S_Reg_96	Scheduling the time "Now" to upgrade the software image into a controller.	To check whether the software image is upgraded into a controller in scheduling time "Now"	Passed	
DNACJ21S_Reg_97	ReSync trigger to Controller from DNAC after upgrade the software image in controller.	To check whether Controller is reloaded when triggering from DNAC after upgrade the software image in controller.	Passed	
DNACJ21S_Reg_98	Upgrade the wrong software image into the Controller from DNAC	To verify whether the error message will display when trying to upgrade wrong software image into the Controller from DNAC	Passed	
DNACJ21S_Reg_99	AP joining status to Controller after upgrade the software image	To check whether the joined Aps upgraded with controller image	Passed	
DNACJ21S_Reg_100	Verify the client connectivity status to Controller after upgrade the software image	To check whether the Client associate with controller	Passed	
DNACJ21S_Reg_101	Upgrading the software image into existing group of AP	To check whether the software image is upgraded into existing group of AP	Passed	
DNACJ21S_Reg_102	Import the image to image repository using HTTP	To check whether the WLC is upgraded using TFTP from PI	Passed	

**REVIEW DRAFT - CISCO CONFIDENTIAL**

DNACJ21S_Reg_103	Import the image to image repository using FTP	To check whether the WLC is upgraded using FTP from PI	Passed	
------------------	--	--	--------	--

**Mobility configuration**

Logical ID	Title	Description	Status	Defect ID
DNACJ21S_Reg_69	Configuring Mobility configuration in Controller	To verify the mobility configuration in controller	Passed	
DNACJ21S_Reg_70	Checking the Mobility configuration in DNAC	To verify whether the mobility configurations are showing or not in DNAC	Passed	
DNACJ21S_Reg_71	Changing the Mobility group name in controller-1 and check the controller's status in DNAC	To verify whether the controller status in DNAC by changing the mobility group Name.	Passed	
DNACJ21S_Reg_72	Checking the Mobility groups configuration in HA setup	To check the mobility group configurations in DNAC during HA	Passed	
DNACJ21S_Reg_73	Checking the Mobility configuration between lightweight to virtual controller in DNAC	To check whether the mobility happens between lightweight & Virtual controller	Passed	
DNACJ21S_Reg_74	Checking the mobility configuration between virtual to 9800 controller in DNAC	To check whether the mobility happens between 9800 & Virtual controller	Passed	
DNACJ21S_Reg_75	Verifying the mobility configuration with Different Radio types in DNAC	To verify whether Client is Moving between Controllers with Different Radio type or not	Passed	

**REVIEW DRAFT - CISCO CONFIDENTIAL**

DNACJ21S_Reg_76	Verifying the mobility configuration with same Radio types in DNAC	To verify whether Client is Moving between Controllers with same Radio type or not	Passed	
DNACJ21S_Reg_77	Monitoring mobility configuration in DNAC using Android Client	To verify whether the Android client details are showing in DNAC or not	Failed	CSCvu90070
DNACJ21S_Reg_78	Monitoring mobility configuration in DNAC using iOS Client	To verify whether the iOS client details are showing in DNAC or not	Passed	
DNACJ21S_Reg_79	Monitoring mobility configuration in DNAC using Windows Client	To verify whether the Windows client details are showing in DNAC or not	Passed	
DNACJ21S_Reg_80	Monitoring mobility configuration in DNAC using Mac Client	To verify whether the Mac client details are showing in DNAC or not	Passed	
DNACJ21S_Reg_81	Add/update/delete mobility peer configuration in DNAC	To check whether the mobility Peer configurations are add/Update/delete in DNAC	Passed	

**Guest web passthrough**

Logical ID	Title	Description	Status	Defect ID
DNACJ21S_Reg_104	Deploying the guest SSID in eWLC UI from Dnac	To Verify whether the guest SSID deployed from Dnac or not	Passed	
DNACJ21S_Reg_105	Configuring Internal guest web passthrough	To Verify whether the redirection happened Internally or not	Passed	
DNACJ21S_Reg_106	Configuring External guest web passthrough	To Verify whether the redirection happened with external server or not	Passed	

**REVIEW DRAFT - CISCO CONFIDENTIAL**

DNACJ21S_Reg_107	Configuring sleeping client with timeout settings	To verify whether the client associate within the time period or not after wakeup	Passed	
DNACJ21S_Reg_108	Configuring sleeping client without timeout settings	To verify whether the client able to authenticate all the time after wakeup	Passed	
DNACJ21S_Reg_109	Creating web authentication Internal / external SSID	To verify whether the client association while configuring web authentication	Passed	
DNACJ21S_Reg_110	Configuring the web passthrough without sleeping client	To verify the client connectivity without sleeping client configuration	Passed	

**CMX Support**

Logical ID	Title	Description	Status	Defect ID
DNACJ21S_Reg_155	Verify the CMX Support in DNAC	By adding the CMX with DNAC	Passed	
DNACJ21S_Reg_156	Verify CMX for the client location and displays the location on the floor map for Windows Machine	Display Client in Maps Windows	Passed	
DNACJ21S_Reg_157	Verify CMX for the client location and displays the location on the floor map for MAC Machine	Display Client in Maps MAC	Passed	
DNACJ21S_Reg_158	Verify CMX for the client location and displays the location on the floor map for Android	Display Client in Maps Android Mobile	Passed	
DNACJ21S_Reg_159	Verify CMX for the client location and displays the location on the floor map for Apple Mobile	Display Client in Maps Apple mobile	Passed	

**REVIEW DRAFT - CISCO CONFIDENTIAL**

DNACJ21S_Reg_160	Verify the Network health score of Controller 9800-40	Health Score of 9800-40	Passed	
DNACJ21S_Reg_161	Verify the Network health score of Controller 9800-80	Health Score of 9800-80	Passed	
DNACJ21S_Reg_162	Verify the Network health score of Controller 9800-L	Health Score of 9800-L	Passed	
DNACJ21S_Reg_163	Verify Overall Health Map or Hierarchical Site View or Building View dashlet	Building View Dashlet	Passed	
DNACJ21S_Reg_164	Verify Overall Health Summary dashlet	Overall Health Summary dashlet	Passed	

**DNA Spaces Support**

Logical ID	Title	Description	Status	Defect ID
DNACJ21S_Reg_165	Connecting CMX to DNA Spaces using CMX Tethering	To connect CMX to DNA spaces using CMX tethering and check if the CMX is added	Passed	
DNACJ21S_Reg_166	Connecting CMX to DNA Spaces using CMX Tethering and adding Campuses from PI	To connect CMX to DNA spaces using CMX tethering and add campuses. check if the CMX is added and campuses are added to it.	Passed	
DNACJ21S_Reg_167	Connecting CMX to DNA Spaces using CMX Tethering and adding Campuses from DNAC	To connect CMX to DNA spaces using CMX tethering and add campuses. check if the CMX is added and campuses are added to it.	Passed	
DNACJ21S_Reg_168	Adding a space connector to DNA Spaces	To add a space connector to DNA spaces.	Passed	

**REVIEW DRAFT - CISCO CONFIDENTIAL**

DNACJ21S_Reg_169	Adding a controller to DNA Sapce using Space connector	To add a controller to DNA space using space connector and check if the controller is added or not.	Passed	
DNACJ21S_Reg_170	Upgrading the DNA Space connector	To upgrade the DNA space connector and check if the connector is upgraded or not	Passed	
DNACJ21S_Reg_171	Connecting AireOS wireless controller to DNA Spaces using WLC Direct Connect.	To connect AireOS controller to DNA Spaces using WLC Direct Connect.	Passed	
DNACJ21S_Reg_172	Adding a Wireless Network in DNA Spaces	To add a wireless network in DNA spaces and check if the wireless network is added to the DNA Spaces.	Failed	CSCvu88930
DNACJ21S_Reg_173	Adding a Wireless Network in DNA Spaces	To add a wireless network in DNA spaces and check if the wireless network is added to the DNA Spaces.	Passed	
DNACJ21S_Reg_174	Connecting Catalyst 9800 wireless controller to DNA Spaces using WLC Direct Connect.	To connect Catalyst 9800 controller to DNA Spaces using WLC Direct Connect.	Passed	
DNACJ21S_Reg_175	Adding a Wireless Network in DNA Spaces	To add a wireless network in DNA spaces and check if the wireless network is added to the DNA Spaces.	Passed	
DNACJ21S_Reg_178	Adding Zone in DNA Spaces	To add zones in DNA spaces under location hierarchy	Passed	

**REVIEW DRAFT - CISCO CONFIDENTIAL**

DNACJ21S_Reg_179	Connect a WLC to DNA Spaces via Aireos WLC Direct connector using wrong token or certificate.	To connect a WLC to DNA Spaces via Aireos WLC direct connector using wrong token or certificate and check if the WLC is showing in location hierarchy or not.	Passed	
DNACJ21S_Reg_180	Adding a AP to the already configured WLC in DNA Space	Adding a AP to the already configured WLC and check if the AP count gets added increased	Passed	

**DNAC support for eWLC**

Logical ID	Title	Description	Status	Defect ID
DNACJ21S_Reg_181	Verifying device details in inventory after added/discovered in cisco DNA	To verify whether the device details are showing in inventory after added in cisco DNA	Passed	
DNACJ21S_Reg_182	Monitoring the devices after adding in cisco DNA and verifying same in eWLC	Verifying whether added devices properly assured or monitoring in cisco DNA	Passed	
DNACJ21S_Reg_183	Discovering multiple devices in cisco DNA and check for the same count in monitored devices	Checking whether count of wireless devices are added in Cisco DNA and they are monitored properly or not	Passed	
DNACJ21S_Reg_184	Checking AP devices in inventory after Wireless controller discovered in cisco DNA	To verify whether all AP's details showing in inventory after device discovered	Passed	
DNACJ21S_Reg_185	Checking the AP's count in network health after successfully added in inventory	To verify AP's count in Assurance dashboard after added in inventory	Passed	

**REVIEW DRAFT - CISCO CONFIDENTIAL**

DNACJ21S_Reg_186	Resync the cisco DNA and checking for the newly added AP's count in device	To verify newly added AP's count in cisco DNA after resync	Passed	
DNACJ21S_Reg_187	Exporting the inventory details from cisco DNA	To verify whether user able to export the device inventory details or not	Passed	
DNACJ21S_Reg_188	Importing the inventory details to device from computer in cisco DNA	To verify whether user able to import the device inventory details or not	Passed	
DNACJ21S_Reg_189	Running the commands in cisco DNA using command runner	To check the output for device commands after run in command runner in cisco DNA	Passed	
DNACJ21S_Reg_190	Deleting the device from inventory in cisco DNA	To check whether user able to delete the device from inventory or not	Passed	
DNACJ21S_Reg_191	Checking the device reachability status in inventory after make the device down	To check whether reachability status change to "unreachable" or not when device is down	Passed	
DNACJ21S_Reg_192	Adding site and provisioning device in cisco DNA	To check whether user able to create site and provision device	Passed	
DNACJ21S_Reg_193	Positioning AP's on site with different radios in cisco DNA	To check AP's positioning after positioned with different radios	Passed	
DNACJ21S_Reg_194	Connecting the wireless clients to AP's and checking the client count in Dashboard	To verify the wireless client details in client Health after connected to AP	Passed	
DNACJ21S_Reg_195	Connecting the wired clients to AP's and checking the client count in Dashboard	To verify the wired clients details in client Health after connected to AP	Passed	



**REVIEW DRAFT - CISCO CONFIDENTIAL**

DNACJ21S_Reg_196	Downloading the upgrade readlines report from inventory devices in cisco DNA	To check whether the user able to download the upgrade readlines report from inventory devices or not	Passed	
------------------	--	---	--------	--

**RSSI and SNR in ASSOC request**

Logical ID	Title	Description	Status	Defect ID
DNACJ21S_Reg_197	Adding eWLC to DNAC and connecting clients	To verify SNR and RSS values in DNA center after connecting client	Passed	
DNACJ21S_Reg_198	Connecting client to AP flex connect mode ,authentication as open and verifying SNR and RSS details	To verify SNR and RSS connectivity in DNAcentre with AP mode flexconnect and authentication as open	Passed	
DNACJ21S_Reg_199	Connecting client to AP flex connect mode ,authentication as PSK and verifying SNR and RSS details	To verify SNR and RSS connectivity in DNAcentre with AP mode flexconnect and authentication as PSK	Passed	
DNACJ21S_Reg_200	Connecting client to AP flex connect mode ,authentication as dot11 and verifying SNR and RSS details	To verify SNR and RSS connectivity in DNAcentre with AP mode flexconnect and authentication as dot11	Passed	
DNACJ21S_Reg_201	verifying SNR and RSS details after connecting client to AP flex mode as standalone ,authentication as open	To verify SNR and RSS connectivity in DNAcentre with AP as Flex standalone and authentication as open	Passed	

**REVIEW DRAFT - CISCO CONFIDENTIAL**

DNACJ21S_Reg_202	verifying SNR and RSS details after connecting client to AP flex mode as standalone ,authentication as PSK	To verify SNR and RSS connectivity in DNACentre with AP as Flex standalone and authentication as PSK	Passed	
DNACJ21S_Reg_203	verifying SNR and RSS details after connecting client to AP flex mode as standalone ,authentication as dot11	To verify SNR and RSS connectivity in DNACentre with AP as Flex standalone and authentication as dot11	Passed	
DNACJ21S_Reg_204	Connecting client to AP local ,authentication as dot11 and verifying SNR and RSS details	To verify SNR and RSS connectivity in DNACentre with AP mode as local and authentication as dot11	Passed	
DNACJ21S_Reg_205	Connecting client to AP mode as local verifying SNR and RSS details	To verify SNR and RSS connectivity in DNACentre with AP mode as local	Passed	
DNACJ21S_Reg_206	Connecting client to AP mode as bridge ,authentication as dot11 and verifying SNR and RSS details	To verify SNR and RSS connectivity in DNACentre with AP mode as bridge	Passed	
DNACJ21S_Reg_207	Checking the SNR and RSS values after performing intra roaming in eWLC	To verify SNR and RSS connectivity in DNACentre after doing intra roaming in WLC	Passed	
DNACJ21S_Reg_208	Roaming client from 9115 & 9120 Aps and checking the SNR and RSS values	To Check the SNR and RSS values when client roam between 3800 & 1815 Aps	Passed	
DNACJ21S_Reg_209	Checking the SNR and RSS values after performing inter roaming in eWLC	To verify SNR and RSS connectivity in DNACentre after doing inter roaming in eWLC	Passed	

**REVIEW DRAFT - CISCO CONFIDENTIAL**

DNACJ21S_Reg_210	Checking the SNR and RSS values after performing FT roaming in eWLC	To verify SNR and RSS connectivity in DNACentre after doing FT roaming in eWLC	Passed	
DNACJ21S_Reg_211	Verifying the AID values in client after connecting client	To check whether client getting AID value or not	Passed	

**Config Wireless**

Logical ID	Title	Description	Status	Defect ID
DNACJ212S_config_1	Smart License Registration not fetching the data even if connection is proper with smart account	To verify the Smart License Registration not fetching the data even if connection is proper with smart account	Failed	CSCvu95876
DNACJ212S_config_2	System Software Update not happening in DNA1.5.179 after establishing connection with Catalog server	To verify the System Software Update not happening in DNA1.5.179 after establishing connection with Catalog server	Failed	CSCvu93108
DNACJ212S_config_3	JIRA Bug: DNACP-5801 -- PnP Connect Register Virtual Account page returns java.lang.NullPointerException	To verify the JIRA Bug: DNACP-5801 -- PnP Connect Register Virtual Account page returns java.lang.NullPointerException	Failed	CSCvu93590
DNACJ212S_config_4	Take a Tour option is not working in Japanese Environment	To check whether the Take a Tour option is not working in Japanese Environment or not	Failed	CSCvu89036
DNACJ212S_config_5	Traffic copy policies - "Description" text needs to be corrected.	To check whether the Traffic copy policies - "Description" text needs to be corrected.	Passed	

**REVIEW DRAFT - CISCO CONFIDENTIAL**

DNACJ212S_config_6	Unable to create policies & Scalable groups in DNAC	To check whether the Unable to create policies & Scalable groups in DNAC	Failed	CSCvu98276
DNACJ212S_config_9	Overlapping of the Exit Navigation Prompt in japanese UI	To check whether the Overlapping of the Exit Navigation Prompt in japanese UI	Failed	CSCvu89321
DNACJ212S_config_10	configuration made in eWLC after adding to PI 3.8 are not shown in Live logs.	To check whether the configuration made in eWLC after adding to PI 3.8 are not shown in Live logs.	Failed	CSCvu94468
DNACJ212S_config_11	Mesh profiles name is not able to display in Japanese GUI environment.	To check whether the Mesh profiles name is not able to display in Japanese GUI environment.	Failed	CSCvu68671
DNACJ212S_config_12	Issue with Dock content translation on changing language from Japanese to English.	To check whether the Issue with Dock content translation on changing language from Japanese to English.	Failed	CSCvu89012
DNACJ212S_config_13	DNAC - Global credentials are not pushed during Discovery - Netconf - No Config	To check whether the DNAC - Global credentials are not pushed during Discovery - Netconf - No Config	Failed	CSCvu93053
DNACJ212S_config_14	System360 - Popup X symbol is not hidden and blocking other popups - No Config	To check whether the System360 - Popup X symbol is not hidden and blocking other popups - No Config	Failed	CSCvu93085
DNACJ212S_config_15	Scrollbars visible within system settings options - No Config	To check whether the Scrollbars visible within system settings options - No Config	Failed	CSCvv04529



## CHAPTER 5

# Related Documentation

---

- [Related Documentation](#), on page 65

## Related Documentation

### **CME 8.10 Release Notes**

[https://www.cisco.com/c/en/us/td/docs/wireless/access\\_point/mob\\_exp/810/release\\_notes/b\\_ME\\_RN\\_810.html](https://www.cisco.com/c/en/us/td/docs/wireless/access_point/mob_exp/810/release_notes/b_ME_RN_810.html)

### **WLC 8.10 Configuration Guide**

[https://www.cisco.com/c/en/us/td/docs/wireless/controller/8-10/config-guide/b\\_cg810.html](https://www.cisco.com/c/en/us/td/docs/wireless/controller/8-10/config-guide/b_cg810.html)

### **CMX 10.6 Configuration Guide**

[https://www.cisco.com/c/en/us/td/docs/wireless/mse/10-6/cmxcfg/b\\_cg\\_cmxc106/getting\\_started\\_with\\_cisco\\_cmxc.html](https://www.cisco.com/c/en/us/td/docs/wireless/mse/10-6/cmxcfg/b_cg_cmxc106/getting_started_with_cisco_cmxc.html)

### **PI 3.8 User Guide**

<https://www.cisco.com/c/en/us/support/cloud-systems-management/prime-infrastructure-3-8/model.html>

### **ISE 2.7 Release Notes**

[https://www.cisco.com/c/en/us/td/docs/security/ise/2-7/release\\_notes/b\\_ise\\_27\\_RN.html](https://www.cisco.com/c/en/us/td/docs/security/ise/2-7/release_notes/b_ise_27_RN.html)

### **Cisco Catalyst 9800 Series Wireless Controller Software Configuration Guide**

[https://www.cisco.com/c/en/us/td/docs/wireless/controller/9800/16-12/config-guide/b\\_wl\\_16\\_12\\_cg.html](https://www.cisco.com/c/en/us/td/docs/wireless/controller/9800/16-12/config-guide/b_wl_16_12_cg.html)

### **Cisco Catalyst 9800 Series Wireless Controller 17.2 Configuration Guide**

[https://www.cisco.com/c/en/us/td/docs/wireless/controller/9800/17-2/config-guide/b\\_wl\\_17\\_2\\_cg.html](https://www.cisco.com/c/en/us/td/docs/wireless/controller/9800/17-2/config-guide/b_wl_17_2_cg.html)

### **Cisco Catalyst 9800 Series Wireless Controller 17.2 Release Notes**

[https://www.cisco.com/c/en/us/td/docs/wireless/controller/9800/17-2/release-notes/rn-17-2-9800.html#id\\_133139](https://www.cisco.com/c/en/us/td/docs/wireless/controller/9800/17-2/release-notes/rn-17-2-9800.html#id_133139)

***REVIEW DRAFT - CISCO CONFIDENTIAL*****Release Notes for Cisco Digital Network Architecture Spaces**

<https://www.cisco.com/c/en/us/td/docs/wireless/cisco-dna-spaces/release-notes/cisco-dnaspaces-june20.html>

**Release Notes Cisco Digital Network Architecture Center**

[https://www.cisco.com/c/en/us/td/docs/cloud-systems-management/network-automation-and-management/dna-center/1-3-3-0/release\\_notes/b\\_cisco\\_dna\\_center\\_rn\\_1\\_3\\_3\\_0.html](https://www.cisco.com/c/en/us/td/docs/cloud-systems-management/network-automation-and-management/dna-center/1-3-3-0/release_notes/b_cisco_dna_center_rn_1_3_3_0.html)

**Cisco Catalyst 9600 Series Switches 17.2 Release Notes**

[https://www.cisco.com/c/en/us/td/docs/switches/lan/catalyst9600/software/release/17-2/release\\_notes/ol-17-2-9600.html](https://www.cisco.com/c/en/us/td/docs/switches/lan/catalyst9600/software/release/17-2/release_notes/ol-17-2-9600.html)