



## **Test Results Summary for Catalyst 9800 Series Wireless Controller 17.13 for Japan (Release Version 17.13 )**

**First Published:** 2023-10-25

**Last Modified:** 2023-10-27

### **Americas Headquarters**

Cisco Systems, Inc.  
170 West Tasman Drive  
San Jose, CA 95134-1706  
USA  
<http://www.cisco.com>  
Tel: 408 526-4000  
800 553-NETS (6387)  
Fax: 408 527-0883





## CONTENTS

---

### CHAPTER 1

#### Overview 1

Catalyst 9800 test 2

---

### CHAPTER 2

#### Test topology and Environment Matrix 7

Test Topology 8

Component Matrix 9

What's New ? 11

Open Caveats 12

Resolved Caveats 13

---

### CHAPTER 3

#### New Features 15

AFC on CM66 and CM64 (Automated Frequency Coordination) 16

Access Point Auto Location Support 18

Bulk AP Provisioning 20

Cisco Aironet Wave 2 and Catalyst Access Point Image Management 23

AP DHCP Option82 Support on FlexConnect Local Switching Mode 25

ED-RRM Support for 6-GHz Band Radio 28

New Client Device Support 31

Support CLI preview for C9800 to display IOS CLI commands instead of XML payload 34

New Countries Supporting 6-GHz Radio Band 36

WPA3 - enhance RA tracing for SAE auth messages 39

WPA3 192 support for newer model AP's 43

---

### CHAPTER 4

#### Regression Features 47

11ax Advanced traffic based scheduler for scheduling SU, OFDMA and MU traffic on 9105/9115/9120 49

Calendar profile enhancements	53
Configuring transition mode and pure WPA3 (6Ghz) on the same WLAN profile	55
Dot1x+EWA on mac Failure	58
Ease of debugging (incorporating WLC and AP debugs)	61
EasyPSK Phase 2 : WLAN Client Onboarding without Registration (local switching)	64
Enable AP fallback to primary, secondary or tertiary controllers under AP Join Profile	68
Enhancement in client steering during Rolling AP Upgrade	71
Enhancements of Rogue detection (Include Channel Width)	74
Enhancements on AP Location	76
Enhancements to archive traces based on time range	77
EWC support for WiFi6 AP's	83
HA SSO RMI	85
iCAP Hardening [Device Dependency]	88
Intelligent AP auditing on WLC	90
Intelligent Capture OTA Sniffer Device Work	93
Intelligently disable 24GHz radios	96
Interferer recording [CleanAir Pro]	99
IP Theft on 9800 WLC [Central Mode of operation]	102
KPIs for AP Health via WLC and AP	107
N+1 Hitless Upgrade - Site based Upgrade	109
New Device Support for 9164/9166 AP	112
OEAP URL based ACLs for split tunnel	117
Per client Bidirectional rate limiting, flex local switching	119
PER SSID filtering for assurance on Cat9800	122
Provide alert mechanism on web-ui for critical events on controller	125
PSK + Multi Auth Support for Guest	126
Rogue PMF Containment and improve detection	128
Scheduling of SSID broadcast	131
Smart Licencing	133
SSID per radio on Dual 5G	134
Open RRM	137
Systemic CAP - Enable Secure Data Wipe capabilities for Legacy Products (Wireless - AP)	139
To share Client Delete reason code at AP to controller	146
Ultra Low End 9800-CL	149

WLC: Improve Embedded Packet Capture (EPC)	153
WPA3 SAE client exclusion optimization for local mode	156
SRCFD	157

---

**CHAPTER 5****Related Documents 177**

Related Documentation	178
-----------------------	-----





# Overview

---

- [Catalyst 9800 test](#) , on page 2

## Catalyst 9800 test

Cisco Catalyst 9800 test , an integral part of the enterprise wireless solution, is a program that validates various Cisco Wireless Products and Features. This is achieved by testing the latest versions of Cisco wireless products

Cisco Catalyst 9800 for Japan , in turn is an add-on testing at the solution level, where the requirements gathered are specific to Japanese usage and market. The requirements are derived based on the following:

- New features in Catalyst 9800 17.13
- High priority scenarios and basic regression features
- Inputs from Cisco SEs/ TAC

The test execution is carried out on selected Cisco Wireless LAN products, which affect the Japanese segment that are prioritized by Cisco Japan team.

The following products are covered in the test execution:

- Cisco Catalyst 9800 Series Wireless Controller
- Cisco Catalyst 9800-CL Wireless Controller for Cloud
- Cisco Embedded Wireless Controller on Catalyst Access Points
- Cisco DNA Center
- Cisco Spaces
- Cisco Spaces Connector
- Prime Infrastructure
- Identity Service Engine(VM)
- Cisco ISR 1100
- Cisco AP c9105
- Cisco AP c9115
- Cisco AP c9120
- Cisco AP c9130
- Cisco AP c9124
- Cisco AP c9162
- Cisco AP c9164
- Cisco AP c9166
- Access Point 4800



**Acronyms**

<b>Acronym</b>	<b>Description</b>
AAA	Authentication Authorization and Accounting
ACL	Access Control List
ACS	Access Control Server
AKM	Authentication Key Management
API	Application Programming Interface
APIC-EM	Application Policy Infrastructure Controller - Enterprise Module
ATF	Air-Time Fairness
BLE	Bluetooth Low Energy
BYOD	Bring Your Own Device
CA	Central Authentication
CAC	Call Admissions Control
CAPWAP	Control and Provisioning of Wireless Access Point
CCN	Channel Change Notification
CCX	Cisco Compatible Extensions
CKIP	Cisco Key Integrity Protocol
CVBF	Cisco Vector Beam Forming
CWA	Central Web Authentication
DCA	Dynamic Channel Assignment
DMZ	Demilitarized Zone
DTIM	Delivery Traffic Indication Map
DSCP	Differentiated Services Code Point
DTLS	Datagram Transport Layer Security
EAP	Extensible Authentication Protocol
EULA	End User Licence Agreement
FLA	Flex Local Authentication
FLS	Flex Local Switching
FT	Fast Transition
FW	Firm Ware
H-REAP	Hybrid Remote Edge Access Point
IOS	Internetwork Operating System
ISR	Integrated Services Router

<b>Acronym</b>	<b>Description</b>
LAG	Link Aggregation
LEAP	Lightweight Extensible Authentication Protocol
LSS	Location Specific Services
LWAPP	Lightweight Access Point Protocol
MAP	Mesh Access Point
MCS	Modulation Coding Scheme
MFP	Management Frame Protection
mDNS	multicast Domain Name System
MIC	Message Integrity Check
MSE	Mobility Service Engine
MTU	Maximum Transmission Unit
NAC	Network Admission Control
NBAR	Network Based Application Recognition
NCS	Network Control System
NGWC	Next Generation Wiring closet
NMSP	Network Mobility Services Protocol
OEAP	Office Extended Access Point
PEAP	Protected Extensible Authentication Protocol
PEM	Policy Enforcement Module
PMF	Protected Management Frame
POI	Point of Interest
PPPoE	Point-to-Point Protocol over Ethernet
PSK	Pre-shared Key
QOS	Quality of service
RADIUS	Remote Authentication Dial-In User Service
RP	Redundancy Port
RRM	Radio Resource Management
SS	Spatial Stream
SSID	Service Set Identifier
SSO	Single Sign On
SSO	Stateful Switch Over
SWIM	Software Image Management

<b>Acronym</b>	<b>Description</b>
TACACS	Terminal Access Controller Access Control System
TLS	Transport Layer Security
WEP	Wired Equivalent Privacy
WGB	Workgroup Bridge
WPA	Wi-Fi Protected Access
WSM	Wireless Security Module



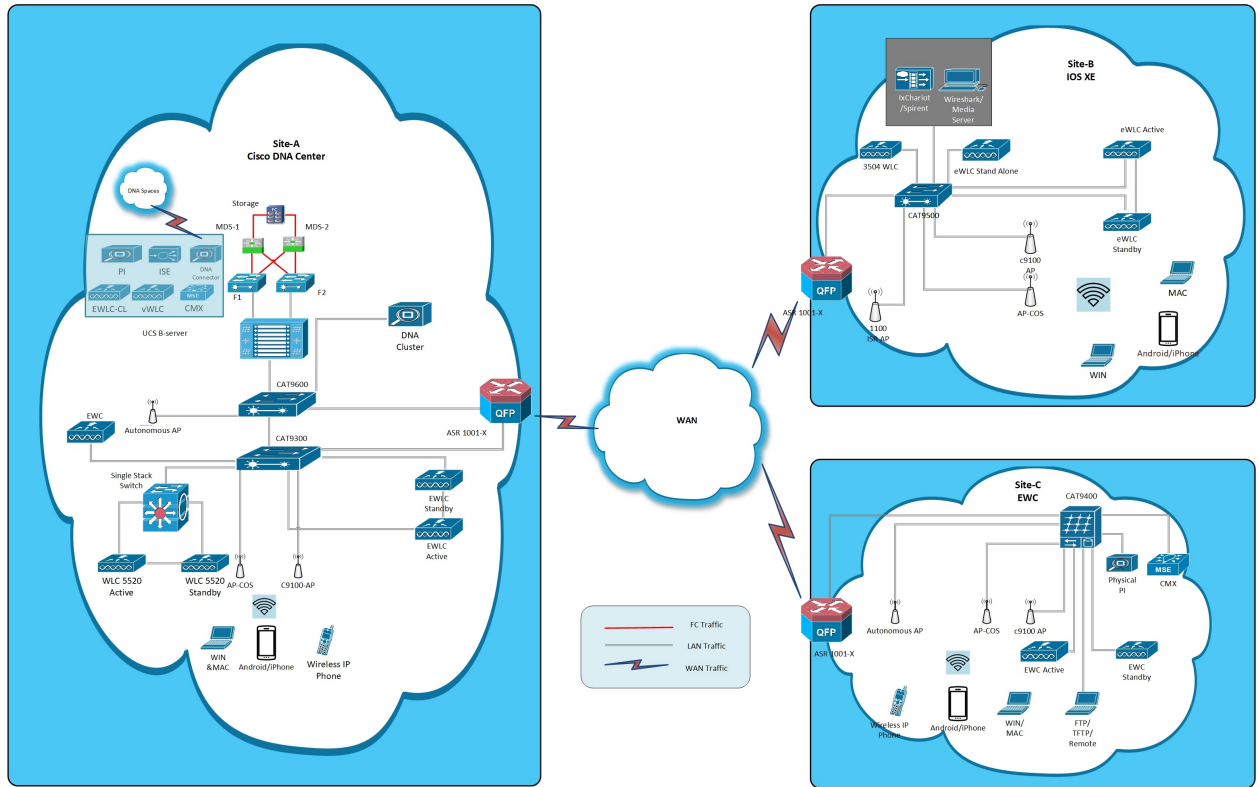


## Test topology and Environment Matrix

---

- [Test Topology, on page 8](#)
- [Component Matrix, on page 9](#)
- [What's New ?, on page 11](#)
- [Open Caveats, on page 12](#)
- [Resolved Caveats, on page 13](#)

# Test Topology



# Component Matrix

Category	Component	Version
Controller	Cisco Catalyst 9800-40 Wireless Controller	17.13
	Cisco Catalyst 9800-80 Wireless Controller	17.13
	Cisco Catalyst 9800-CL Wireless Controller for Cloud	17.13
	Cisco Catalyst 9800-L Wireless Controller	17.13
	Cisco Embedded Wireless Controller on Catalyst Access Points	17.13
	Virtual Controller	8.10.121.0
Applications	Cisco DNA Center	2.3.7
	Cisco Spaces	Cloud (Sept 2023)
	Cisco Spaces Connector	2.3.495 and 3.1.1.47
	Prime Infrastructure (Virtual Appliance, UCS based)	3.10
	ISE(VM)	3.3
	Cisco Jabber for Windows, iPhone	14.1.5
	Cisco Air Provisioning App	1.7.4
	Cisco Wireless App	1.1.113
Access Point	Cisco AP 9166	17.13
	Cisco AP 9164	17.13
	Cisco AP 9162	17.13
	Cisco AP 9124	17.13
	Cisco AP 9130	17.13
	Cisco AP 9120	17.13
	Cisco AP 9115	17.13
	Cisco AP 9105	17.13
	Cisco 1100 ISR	17.13
	Cisco AP 4800	15.3

Category	Component	Version
Switch	Cisco Cat 9300	17.13
	Cisco Cat 9200L	17.13
	Cisco 3750V2 switch	15.0(2)SE2
	Cisco Cat 6509-E	15.1(1)SY1
Chipset	5300, 6300 AGN	15.40.41.5058
	7265 AC	21.40.2
	Airport Extreme	7.9.1
Client	Operating System(JOS)	Windows 10
	Apple Mac Book Pro, Apple Mac Book Air (JP Locale)	Mac OS 13
	iPad Pro	iOS 16
	iPhone 14 Pro, 6, 6S ,7 & 11 (JP Locale)	iOS 16
	Google Pixel 7 Pro, Samsung Galaxy S22 Ultra, S7, S10, Nexus 6P, Sony Xperia XZ	Android 13
	Wireless IP Phone 8821	11.0.5
	End points	Apple Mac 12.6.3
		iPhone 6,6S ,7, 11 & 14 Pro
		Windows 10
		Windows 11
Google Pixel 7 Pro, Samsung Galaxy S22 Ultra, S4, S7,S10, Nexus 6P, Sony Xperia		
Cisco AnyConnect VPN Client	4.10.07073	
MS surface GO	Windows 10 & 11	
Module	Hyper location Module	NA
Active Directory	AD	Windows server 2022
Call Control	Cisco Unified Communications Manager	12.5.0.99832-3/12.5.0.99832-3-1(JP)
Browsers	IE	11.0
	Mozilla Firefox	119.0
	Safari	17.0
	Chrome	118.0.5993.118



# What's New ?

## Cisco Catalyst 9800 Series Wireless Controller

- ED-RRM Support for 6-GHz Band Radio
- Support CLI preview for C9800 to display IOS CLI commands instead of XML payload
- Access Point Auto Location Support
- WPA3 - enhance RA tracing for SAE auth messages
- Bulk AP Provisioning
- AFC on CM66 & CM64 (Automated Frequency Coordination)
- Cisco Aironet Wave 2 and Catalyst Access Point Image Management
- New Client Device Support
- WPA3 192 support for newer model AP's
- AP DHCP Option82 Support on FlexConnect Local Switching Mode
- New Countries Supporting 6-GHz Radio Band

## Open Caveats

Defect ID	Title
CSCwh07772	Japanese created Wireless AAA Policy name is showing random profile name
CSCwh12532	Not able to create EAP-FAST parameters policy with double quotes in CLI
CSCwh15397	Calendar profile issue in CLI
CSCwh18187	Unable to Add Rogue AP Rules with "Comma"Character
CSCwh25254	Unable to access AP Join page in ewlc
CSCwh27590	wlan profile disable issue in CLI
CSCwh27794	Introduce 'select all' checkbox to choose multiple vlans simultaneously
CSCwh53586	Provision is getting failed due to default-rf-profile-6ghz deployment on EWC
CSCwh67505	Misconfiguration for WPA3 SUITEB192-1X in configuration guide
CSCwh70896	While adding Rogue AP Rules observed Multiple issues - Wireless protection policies
CSCwh72176	Maximum Expected Bandwidth (Kbps) and Average Packet Size Count range is varying from UI to Document
CSCwh82768	CLI does not have option to configure mDNS Mode as Bridging for a wlan
CSCwh83883	Application visibility UI page changes after hitting back option multiple times

## Resolved Caveats

Defect ID	Title
CSCwh01124	eWLC UI: Inventory help topics is not available
CSCwh03526	Getting 400 error message while creating Qos profile with a space in name
CSCwh05044	WLAN Wizard Confirm Yes window is not closing
CSCwh05180	RF Profile RRM parameters has to be update for help guide
CSCwh05221	Policy Profile ->WLAN Session Timeout default value is showing as 1800
CSCwh12129	Networks 5Ghz or 2.4Ghz are redirecting to 6Ghz Network
CSCwh12316	JA Locale: Bridge Client Access Overlapped into enable toggle switch
CSCwh12803	Guest lan map configuration with '?' in name needs to be allowed
CSCwh15623	ACL >> Rules are automatically adding
CSCwh16833	Observed Multiples Issues While Mapping Fabric VNID
CSCwh16857	While Adding SGT Mapping VLAN List Value Showing Error Message
CSCwh16937	While Configure Interface Selected Modes Doesn't Showing in CTS Link Configuration
CSCwh25253	Unable to access: AP Configuration, AP Stats and AP Join pages
CSCwh28793	Walkme : While Configure a WLAN Security-> Layer2 Message Box Doesn't shows Properly
CSCwh28876	Walkme : While Adding Flex profile VLAN Creation Success Even when UI Message Indicates Warning
CSCwh29070	eWLC UI: monitor & Enforced button are overlapped
CSCwh38906	Walkme- Invalid CLI Command executed No indication to place MAC address in single AP v2
CSCwh38922	While Configure Radioactive Trace CLI popup persists after workflow completion in Walkme
CSCwh52111	Unable to apply Local Site tag if flex profile is deleted
CSCwh54135	Access Point mDNS should not show when AP is in flex mode

CSCwh55281	Firefox: Dark theme is not applied for Confirm window for multiple pages
CSCwh68008	eWLC UI: AFC help page is showing about dashboard contents
CSCwh68215	Key Pair Generation is not deleted in PKI Management
CSCwh68330	Keep Alive Interval and Mobility Keep Alive Count range is varying from UI to Document
CSCwh69621	ACL-IPv4 Standard(default) and IPv4 Extended count range varying from ui to document
CSCwh69717	Observed Multiple issues while adding Password Policy in AAA Advanced Page
CSCwh75408	Device is not responding for the given netconf port
CSCwh77126	Active Query timer range is varying from UI to Document
CSCwh82393	Task is showing as In Progress - Bulk AP Provision (Caused by CSCwh35166)
CSCwh82792	AP Geolocation coordinates boundary limit is not showing
CSCwh82805	Available APs list is still showing even after joining the APs in the location
CSCwh84336	Hotspot Gas Rate Limit applied Success even when UI Message Indicates Warning in Global Settings



## New Features

---

- [AFC on CM66 and CM64 \(Automated Frequency Coordination\)](#), on page 16
- [Access Point Auto Location Support](#), on page 18
- [Bulk AP Provisioning](#), on page 20
- [Cisco Aironet Wave 2 and Catalyst Access Point Image Management](#), on page 23
- [AP DHCP Option82 Support on FlexConnect Local Switching Mode](#), on page 25
- [ED-RRM Support for 6-GHz Band Radio](#), on page 28
- [New Client Device Support](#), on page 31
- [Support CLI preview for C9800 to display IOS CLI commands instead of XML payload](#), on page 34
- [New Countries Supporting 6-GHz Radio Band](#), on page 36
- [WPA3 - enhance RA tracing for SAE auth messages](#), on page 39
- [WPA3 192 support for newer model AP's](#), on page 43

## AFC on CM66 and CM64 (Automated Frequency Coordination)

Logical ID	Title	Description	Status	Defect ID
EWLCJ1713S_AFC_1	AFC Request/Response Statistics for 9166 Ap in UI	To check the AFC Request/Response Statistics for 9166 AP in UI	Passed	
EWLCJ1713S_AFC_2	AFC Request/Response Statistics for 9164 Ap in UI	To check the AFC Request/Response Statistics for 9164 AP in UI	Passed	CSCwh68008
EWLCJ1713S_AFC_3	AFC Health Statistics for 9166 Ap in UI	To check the AFC Health Statistics for 9166 AP in UI	Passed	
EWLCJ1713S_AFC_4	AFC Health Statistics for 9164 Ap in UI	To check the AFC Health Statistics for 9164 AP in UI	Passed	
EWLCJ1713S_AFC_5	AFC Request/Response Statistics for 9166 Ap in CLI	To check the AFC Request/Response Statistics for 9166 AP in CLI	Passed	
EWLCJ1713S_AFC_6	AFC Request/Response Statistics for 9164 Ap in CLI	To check the AFC Request/Response Statistics for 9164 AP in CLI	Passed	
EWLCJ1713S_AFC_7	AFC Health Statistics for 9166 Ap in CLI	To check the AFC Health Statistics for 9166 AP in CLI	Passed	
EWLCJ1713S_AFC_8	AFC Health Statistics for 9164 Ap in CLI	To check the AFC Health Statistics for 9164 AP in CLI	Passed	
EWLCJ1713S_AFC_9	Active AFC Status or active warning for Wi-Fi 6E Aps	To check Active AFC Status or active warning for Wi-Fi 6E Aps	Passed	
EWLCJ1713S_AFC_10	Geolocation known for Wi-Fi 6E Aps	To check Geolocation known for Wi-Fi 6E Aps	Passed	
EWLCJ1713S_AFC_11	Standard Power mode for Wi-Fi 6E Aps	To check Standard Power mode for Wi-Fi 6E Aps	Passed	

EWLCJ1713S_AFC_12	Display AFC 160MHz-band channels information	To add 6ghz and display AFC 160MHz-band channels information	Passed	
EWLCJ1713S_AFC_13	Display AFC 80MHz-band channels information	To add 6ghz and display AFC 80MHz-band channels information	Passed	
EWLCJ1713S_AFC_14	Display AFC 40MHz-band channels information	To add 6ghz and display AFC 40MHz-band channels information	Passed	
EWLCJ1713S_AFC_15	Display AFC 20MHz-band channels information	To add 6ghz and display AFC 20MHz-band channels information	Passed	
EWLCJ1713S_AFC_16	Display AFC 80plusMHz-band channels information	To add 6ghz and display AFC 80plusMHz-band channels information	Passed	

## Access Point Auto Location Support

Logical ID	Title	Description	Status	Defect ID
EWLCJ1713S_APL_1	Configure AP Geolocation	To configure Ap Geolocation	Passed	CSCwh82792
EWLCJ1713S_APL_2	Configure AP Geolocation FTM	To configure Ap Geolocation FTM	Passed	
EWLCJ1713S_APL_3	Configure Custom FTM Burst options	To verify FTM burst options configured as custom or not	Passed	
EWLCJ1713S_APL_4	Check able collect debug logs	To check able to collect debug logs	Passed	
EWLCJ1713S_APL_5	Check AP neighbours	To verify neighbour ap showing or not	Passed	
EWLCJ1713S_APL_6	Trigger User initiated Ranging	To verify ranging details triggered or not for ap	Passed	
EWLCJ1713S_APL_7	Broadcast Wlan to configure AP Geolocation and FTM	To configure Ap Geolocation FTM and broadcast wlan	Passed	CSCwh12803
EWLCJ1713S_APL_8	Check the client connected with WPA3 security	To check weather client is connected with WPA3 security	Passed	
EWLCJ1713S_APL_9	Check the client connected with dot1x security	To check weather client is connected with dot1x security	Passed	
EWLCJ1713S_APL_10	Configure ap join profile for geolocation	To verify geolocation details in ap join profile	Failed	CSCwh25254
EWLCJ1713S_APL_11	Connect Apple device client	To connect apple device client check weather apple device is supported or not	Passed	
EWLCJ1713S_APL_12	Check the AP's Count in Location	To Check weather AP's count shown in location	Passed	CSCwh82805
EWLCJ1713S_APL_13	Check the Clients Count in Location	Check the Clients Count in Location	Passed	



EWLCJ1713S_APL_14	Check Client connected through WPA2 PSK FT+PSK FT Enable security	To Check Client connected through WPA2 PSK FT+PSK FT Enable security	Passed	
EWLCJ1713S_APL_15	Check able connect Mac client to WPA2 MAC filtering enable	To Check able to connect client to enable MAC filtering	Passed	
EWLCJ1713S_APL_16	Verify Client location	To Check able to verify client location	Passed	
EWLCJ1713S_APL_17	Do RRM related changes to 6GHz radio and check for client connectivity	To do RRM config changes and verify client connectivity on 6GHz radio	Passed	
EWLCJ1713S_APL_18	Do RRM related changes to 5GHz radio and check for client connectivity	To do RRM config changes and verify client connectivity on 5GHz radio	Passed	
EWLCJ1713S_APL_19	Do RRM related changes to 2.4GHz radio and check for client connectivity	To do RRM config changes and verify client connectivity on 2.4GHz radio	Passed	

## Bulk AP Provisioning

Logical ID	Title	Description	Status	Defect ID
EWLCJ1713S_BAP_1	Join APs to one controller using CLI.	Adding APs to the controller using CLI.	Passed	
EWLCJ1713S_BAP_2	Configuring Bulk AP Provisioning for Admin status.	Verify whether able to configure Bulk AP Provisioning for Admin status.	Passed	
EWLCJ1713S_BAP_3	Check configured details of admin Status.	Verify the details of configured admin status.	Passed	CSCwh54135
EWLCJ1713S_BAP_4	Configuring Bulk AP Provisioning for Location.	Verify whether able to configure Bulk AP Provisioning for Location.	Passed	
EWLCJ1713S_BAP_5	Check configured details of Location.	Verify the details of configured Location.	Passed	CSCwh82393
EWLCJ1713S_BAP_6	Configuring Bulk AP Provisioning for Height.	Verify whether able to configure Bulk AP Provisioning for Height.	Passed	
EWLCJ1713S_BAP_7	Check configured details of Height.	Verify the details of configured Height.	Passed	
EWLCJ1713S_BAP_8	Configuring Bulk AP Provisioning for cable length.	Verify whether able to configure Bulk AP Provisioning for cable length.	Passed	
EWLCJ1713S_BAP_9	Check configured details of cable length.	Verify the details of configured cable length.	Passed	
EWLCJ1713S_BAP_10	Configuring Bulk AP Provisioning for Primary & Secondary & Tertiary Controller.	Verify whether able to configure Bulk AP Provisioning for Primary & Secondary & Tertiary Controller.	Passed	
EWLCJ1713S_BAP_11	Check configured details of Primary & Secondary & Tertiary Controller.	Verify the details of configured Primary & Secondary & Tertiary Controller.	Passed	

EWLCJ1713S_BAP_12	Check after the reload of AP able to AP Provision.	After the reload of AP, verify whether able to do AP Provision in Bulk.	Passed	
EWLCJ1713S_BAP_13	Configuring WLAN with WPA3-Dot1x security	verify able to config WLAN with WPA3-Dot1x security	Passed	
EWLCJ1713S_BAP_14	Connect with an android client with WPA3 - Dot1x configured WLAN	To Verify with an android client with WPA3 - Dot1x configured WLAN	Passed	
EWLCJ1713S_BAP_15	Connect with an IOS client with WPA3 - Dot1x configured WLAN	To Verify with an IOS client with WPA3 - Dot1x configured WLAN	Passed	
EWLCJ1713S_BAP_16	Connect with an windows client with WPA3 - Dot1x configured WLAN	To Verify with an windows client with WPA3 - Dot1x configured WLAN	Passed	
EWLCJ1713S_BAP_17	Connect with an MAC client with WPA3 - Dot1x configured WLAN	To Verify with an MAC client with WPA3 - Dot1x configured WLAN	Passed	
EWLCJ1713S_BAP_18	Connect with an Surface client with WPA3 - Dot1x configured WLAN	To Verify with an surface client with WPA3 - Dot1x configured WLAN	Passed	
EWLCJ1713S_BAP_19	Connect with an Google pixel 7 pro client with WPA3 - Dot1x configured WLAN	To Verify with an Google pixel 7 pro client with WPA3 - Dot1x configured WLAN	Passed	
EWLCJ1713S_BAP_20	Connect with an Samsung S22 ultra client with WPA3 - Dot1x configured WLAN	To Verify with an Samsung S22 ultra client with WPA3 - Dot1x configured WLAN	Passed	
EWLCJ1713S_BAP_21	Connect with an Apple iPad 4th gen client with WPA3 - Dot1x configured WLAN	To Verify with an Apple iPad 4th gen client with WPA3 - Dot1x configured WLAN	Passed	

EWLCJ1713S_BAP_22	Check after connecting to clients, able to do AP Provision in Bulk.	Verify whether able to do AP Provision in Bulk after connecting to clients	Passed	
EWLCJ1713S_BAP_23	Configure Roaming between controllers	To configure Roaming between controllers	Passed	
EWLCJ1713S_BAP_24	Check after configuring roaming between controllers able to do AP Provision in Bulk.	Verify whether able to do AP Provision in Bulk after configuring roaming between controllers.	Passed	
EWLCJ1713S_BAP_25	Configure AP in flex mode	To verify whether able to config AP in Flex mode.	Passed	
EWLCJ1713S_BAP_26	Check after configuring AP in Flex mode, able to do AP Provision in Bulk.	Verify whether able to do AP Provision in Bulk after configuring AP in Flex mode.	Passed	CSCwh28876
EWLCJ1713S_BAP_27	Configure AP in Sniffer mode	To verify whether able to config AP in Sniffer. mode.	Passed	
EWLCJ1713S_BAP_28	Check after configuring AP in sniffer mode, able to do AP Provision in Bulk.	Verify whether able to do AP Provision in Bulk after connecting to clients	Passed	

# Cisco Aironet Wave 2 and Catalyst Access Point Image Management

Logical ID	Title	Description	Status	Defect ID
EWLCJ1713S_COSAP_1	Join APs to one controller using CLI.	Adding APs to the controller using CLI.	Passed	
EWLCJ1713S_COSAP_2	Upgrading the device & checking the AP any crash occur or not.	Verify whether crash occurs while upgrading device.	Passed	
EWLCJ1713S_COSAP_3	Downgrading the device & checking the AP any crash occur or not.	Verify whether crash occurs while downgrading device.	Passed	
EWLCJ1713S_COSAP_4	Configuring WLAN with WPA3-Dot1x security	Verify able to config WLAN with WPA3-Dot1x security	Passed	
EWLCJ1713S_COSAP_5	Check APs whether any crash occurred	Verify whether any APs got crash.	Passed	CSCwh69717
EWLCJ1713S_COSAP_6	Configure WLAN with WPA Security and PSK Auth	Verify able to Config WLAN with WPA Security and PSK Auth	Passed	
EWLCJ1713S_COSAP_7	Check APs whether any crash occurred	Verify whether any APs got crash.	Passed	
EWLCJ1713S_COSAP_8	Configure WLAN with WPA-2 security and PSK Auth	verify able to config WLAN with WPA-2 security and PSK Auth	Passed	
EWLCJ1713S_COSAP_9	Check APs whether any crash occurred	Verify whether any APs got crash.	Passed	
EWLCJ1713S_COSAP_10	Configuring WLAN with WPA3-SAE security	verify able to config WLAN with WPA3- SAE security	Passed	
EWLCJ1713S_COSAP_11	Check APs whether any crash occurred	Verify whether any APs got crash.	Passed	
EWLCJ1713S_COSAP_12	Configure Roaming between controllers	To configure Roaming between controllers	Passed	

EWLCJ1713S_COSAP_13	Check APs whether any crash occurred	Verify whether any APs got crash.	Passed	
EWLCJ1713S_COSAP_14	Reassociation of client to the AP after reboot	To verify if the client gets reassociated to the AP .	Passed	
EWLCJ1713S_COSAP_15	Check APs whether any crash occurred	Verify whether any APs got crash.	Passed	

# AP DHCP Option82 Support on FlexConnect Local Switching Mode

Logical ID	Title	Description	Status	Defect ID
EWLCJ1713S_DHCP82_1	Check DHCP option 82 support	To check DHCP option 82 supporting or not	Passed	
EWLCJ1713S_DHCP82_2	Check for DHCP option 82 support via CLI supporting or not	To check DHCP option 82 support via CLI supporting or not	Passed	
EWLCJ1713S_DHCP82_3	Check with AP9105 to supporting DHCP option_82	To check with AP9105 to supporting DHCP option_82	Passed	
EWLCJ1713S_DHCP82_4	Check with AP9115 to supporting DHCP option_82	To check with AP9115 to supporting DHCP option_82	Passed	
EWLCJ1713S_DHCP82_5	Check with AP9124 to supporting DHCP option_82	To check with AP9124 to supporting DHCP option_82	Passed	
EWLCJ1713S_DHCP82_6	Check with AP9130 to supporting DHCP option_82	To check with AP9130 to supporting DHCP option_82	Passed	
EWLCJ1713S_DHCP82_7	Check with AP9164 to supporting DHCP option_82	To check with AP9164 to supporting DHCP option_82	Passed	
EWLCJ1713S_DHCP82_8	Check with AP9166 to supporting DHCP option_82	To check with AP9166 to supporting DHCP option_82	Passed	
EWLCJ1713S_DHCP82_9	Disable local switching under policy profile	To disable local switching under policy profile	Passed	
EWLCJ1713S_DHCP82_10	After Ap rejoins check the details of DHCP option	To after Ap rejoins check the details of DHCP option	Passed	

EWLCJ1713S_DHCP82_11	Move AP mode flex to local and check details updated or not	To move AP mode flex to local and check details updated or not	Passed	
EWLCJ1713S_DHCP82_12	Check DHCP details with wlan shutdown	To check DHCP details with wlan shutdown	Passed	CSCwh77126
EWLCJ1713S_DHCP82_13	Check DHCP details with no wlan shutdown	To check DHCP details with no wlan shutdown	Passed	
EWLCJ1713S_DHCP82_14	Configure DHCP ssid on policy profile Check the DHCP details	To configure DHCP ssid on policy profile Check the DHCP details	Passed	
EWLCJ1713S_DHCP82_15	Configure DHCP ssid and apname on policy profile Check DHCP details	To configure DHCP ssid and apname on policy profile Check DHCP details	Passed	
EWLCJ1713S_DHCP82_16	Configure DHCP ssid and AP eth_mac on policy profile Check DHCP details	To configure DHCP ssid and apeth_mac on policy profile Check DHCP details	Passed	
EWLCJ1713S_DHCP82_17	Configure wlan1 with DHCP options with any of WPA+WPA2 securities	To configure wlan1 with DHCP options with any of WPA+WPA2 securities	Failed	CSCwh27590
EWLCJ1713S_DHCP82_18	Configure wlan2 with DHCP options with any of WPA2+WPA3 securities	To configure wlan2 with DHCP options with any of WPA2+WPA3 securities	Passed	
EWLCJ1713S_DHCP82_19	Configure wlan3 with DHCP options with any of WPA3 securities	To configure wlan3 with DHCP options with any of WPA3 securities	Passed	
EWLCJ1713S_DHCP82_20	Configure wlan3 with DHCP options with None security	To configure wlan3 with DHCP options with None security	Passed	



EWLCJ1713S_DHCP82_21	Compare Dhcp details upon above 4 Scenarios with each other	To compare Dhcp details upon above 4 Scenarios with each other	Passed	
EWLCJ1713S_DHCP82_22	Connect multiple clients and compare the DHCP packets details	To connect multiple clients and compare the DHCP packets details	Passed	

## ED-RRM Support for 6-GHz Band Radio

Logical ID	Title	Description	Status	Defect ID
EWLCJ1713S_CA_1	ED-RRM config option for the 6Ghz should be disabled by default	To check ED-RRM config option for the 6Ghz should be disabled by default	Passed	
EWLCJ1713S_CA_2	Enable 6GHz ED-RRM and check the config and show	To enable 6GHz ED-RRM and check the config and show	Passed	
EWLCJ1713S_CA_3	Enable the 6GHz ED-RRM custom threshold and check the default value	To enable the 6GHz ED-RRM custom threshold and check the default value	Passed	
EWLCJ1713S_CA_4	Configure ED-RRM rouge contribution enable and check the config status	To configure ED-RRM rouge contribution enable and check the config status	Passed	
EWLCJ1713S_CA_5	Enable the 6GHz ED-RRM and reboot the controller and check	To enable the 6GHz ED-RRM and reboot the controller and check	Passed	CSCwh05180
EWLCJ1713S_CA_6	Check the config on Active and Standby in HA test bed	To check the config on Active and Standby in HA test bed	Passed	
EWLCJ1713S_CA_7	Configure the ED-RRM for 5Ghz and 2.4Ghz and check the config	To configure the ED-RRM for 5Ghz and 2.4Ghz and check the config	Passed	
EWLCJ1713S_CA_8	Check ED-RRM config in show running config	To check ED-RRM config in show running config	Passed	CSCwh12129
EWLCJ1713S_CA_9	Configure the ED-RRM for 2.4Ghz via cli and check the config	To configure the ED-RRM for 2.4Ghz via cli and check the config	Passed	
EWLCJ1713S_CA_10	Configure the ED-RRM for 5Ghz via cli and check the config	To configure the ED-RRM for 5Ghz via cli and check the config	Passed	

EWLCJ1713S_CA_11	Configure the ED-RRM for 6Ghz via cli and check the config	To configure the ED-RRM for 6Ghz via cli and check the config	Passed	
EWLCJ1713S_CA_12	Enable CleanAir for the 2.4-GHz Band in GUI	To enable CleanAir for the 2.4-GHz Band in GUI	Passed	
EWLCJ1713S_CA_13	Enable CleanAir for the 2.4-GHz Band in CLI	To enable CleanAir for the 2.4-GHz Band in CLI	Passed	
EWLCJ1713S_CA_14	Configuring Interference Reporting for a 2.4-GHz Device	To configure Interference Reporting for a 2.4-GHz Device	Passed	
EWLCJ1713S_CA_15	Enable CleanAir for the 5-GHz Band in GUI	To enable CleanAir for the 5-GHz Band in GUI	Passed	
EWLCJ1713S_CA_16	Configuring Interference Reporting for a 5-GHz Device	To configure Interference Reporting for a 5-GHz Device	Passed	
EWLCJ1713S_CA_17	Enable CleanAir for the 6-GHz Band in GUI	To enable CleanAir for the 6-GHz Band in GUI	Passed	
EWLCJ1713S_CA_18	Configuring Interference Reporting for a 5-GHz Device	To configure Interference Reporting for a 5-GHz Device	Passed	
EWLCJ1713S_CA_19	Config 2.4 Ghz CleanAir in CLI and verify show commands	To config and verify 2.4 Ghz CleanAir commands	Passed	
EWLCJ1713S_CA_20	Config 5Ghz CleanAir in CLI and verify show commands	To config and verify 5 Ghz CleanAir commands	Passed	
EWLCJ1713S_CA_21	Connect Windows client and verify ED-RRM with CleanAir Pro	To check whether Windows client is connecting or not for ED-RRM with CleanAir Pro	Passed	

EWLCJ1713S_CA_22	Connect Android client and verify ED-RRM with CleanAir Pro	To check whether Android client is connecting or not for ED-RRM with CleanAir Pro	Passed	
EWLCJ1713S_CA_23	Connect Go Plus client and verify ED-RRM with CleanAir Pro	To check whether Go Plus client is connecting or not for ED-RRM with CleanAir Pro	Passed	
EWLCJ1713S_CA_24	Connect MAC client and verify ED-RRM with CleanAir Pro	To check whether MAC client is connecting or not for ED-RRM with CleanAir Pro	Passed	
EWLCJ1713S_CA_25	Connect IOS client and verify ED-RRM with CleanAir Pro	To check whether IOS client is connecting or not for ED-RRM with CleanAir Pro	Passed	

## New Client Device Support

Logical ID	Title	Description	Status	Defect ID
EWLCJ1713S_NCDS_1	Associate client with 2.4 GHz radio using 9120/ 9115/ 9130/ 9105/ 9124 AP	To validate the pixel 7 pro/ S22/ iphone14 pro /iPad pro client details showing or not for 2.4GHz radio	Passed	
EWLCJ1713S_NCDS_2	Associate client with 5 GHz radio using 9120/ 9115/ 9130/ 9105/ 9124 AP	To validate the pixel 7 pro/ S22/ iphone14 pro /iPad pro client details showing or not for 5 GHz radio	Passed	
EWLCJ1713S_NCDS_3	Associate client with 6 GHz radio using 9164 / 9166 Ap	To validate the pixel 7 pro/ S22/ iphone14 pro /iPad pro client details showing or not for 6 GHz radio	Passed	
EWLCJ1713S_NCDS_4	Associate client with WPA +WPA2 security type	To validate the pixel 7 pro/ S22/ iphone14 pro /iPad pro client details showing or not for WPA2+WPA3 security type	Passed	
EWLCJ1713S_NCDS_5	Associate client with WPA2 +WPA3 security type with dot1x	To validate the pixel 7 pro/ S22/ iphone14 pro /iPad pro client details showing or not for WPA2+WPA3 security type with dot1x	Passed	
EWLCJ1713S_NCDS_6	Associate client with WPA2 +WPA3 security type with PSK	To validate the pixel 7 pro/ S22/ iphone14 pro /iPad pro client details showing or not for WPA2+WPA3 security type with PSK	Passed	

EWLCJ1713S_NCDS_7	Associate client with WPA2 +WPA3 security type with SAE	To validate the pixel 7 pro/ S22/ iphone14 pro /iPad pro client details showing or not for WPA2+WPA3 security type with SAE	Passed	CSCwh75408
EWLCJ1713S_NCDS_8	Validate meraki details in location hierarchy	To validate the pixel 7 pro/ S22/ iphone14 pro /iPad pro client details showing or not for WPA2+WPA3 security type with FT	Passed	
EWLCJ1713S_NCDS_9	Associate client with WPA3 security type with SAE	To validate the pixel 7 pro/ S22/ iphone14 pro /iPad pro client details showing or not for WPA3 security type with SAE	Passed	CSCwh12316
EWLCJ1713S_NCDS_10	Associate client with WPA3 security type with dot1x	To validate the pixel 7 pro/ S22/ iphone14 pro /iPad pro client details showing or not for WPA3 security type with dot1x	Passed	
EWLCJ1713S_NCDS_11	Associate client with WPA3 security type with OWE	To validate the pixel 7 pro/ S22/ iphone14 pro /iPad pro client details showing or not for WPA3 security type with OWE	Passed	
EWLCJ1713S_NCDS_12	Associate client with WPA3 security type with Fast transition	To validate the pixel 7 pro/ S22/ iphone14 pro /iPad pro client details showing or not for WPA3 security type with FT	Passed	

EWLCJ1713S_NCDS_13	Associate client with Static web security type	To validate the pixel 7 pro/ S22/ iphone14 pro /iPad pro client details showing or not for Static web security type	Passed	
EWLCJ1713S_NCDS_14	Perform inter roaming and check the client connectivity	To validate the client associated or not after inter roaming	Passed	
EWLCJ1713S_NCDS_15	Perform intra roaming and check the client connectivity	To validate the client associated or not after intra roaming	Passed	
EWLCJ1713S_NCDS_16	Perform reload and check the client connectivity	To validate the client associated or not after reload	Passed	
EWLCJ1713S_NCDS_17	Provision the configuration in DNAC	To validate the client details showing or not in DNAC	Failed	CSCwh53586

## Support CLI preview for C9800 to display IOS CLI commands instead of XML payload

Logical ID	Title	Description	Status	Defect ID
EWLCJ1713S_sCLI_1	Creating AP join profile name	To check AP Join Profile joined or not	Passed	CSCwh25253
EWLCJ1713S_sCLI_2	Creating Policy Profile	To Check policy profile created successfully or not	Passed	
EWLCJ1713S_sCLI_3	Configuring a Policy Tag	To configure a Policy Tag and associate the WLAN Profile with the Policy Profile.	Passed	
EWLCJ1713S_sCLI_4	Configure ap profile name from CLI for 9800-CL controller	To configure ap profile name from CLI for 9800-CL controller	Passed	
EWLCJ1713S_sCLI_5	Configure ap profile name from CLI for 9800-80 controller	To configure ap profile name from CLI for 9800-80 controller	Passed	CSCwh38922
EWLCJ1713S_sCLI_6	Checking the details of the AP through the CLI	To check the details of the AP using CLI and check if the details are correctly shown or not	Passed	
EWLCJ1713S_sCLI_7	Verify CLI command output with more than 2 AP's joined	To verify CLI command output with more than 2 AP's joined	Passed	CSCwh38906
EWLCJ1713S_sCLI_8	Verify CLI command output with more than 5 AP's joined	To verify CLI command output with more than 5 AP's joined	Passed	
EWLCJ1713S_sCLI_9	Configure eWLC with AP and verify CLI output	To configure eWLC with AP and verify CLI output	Passed	
EWLCJ1713S_sCLI_10	Verify CLI command output details in EWC device	To verify CLI command output details in EWC device	Passed	



EWLCJ1713S_sCLI_11	Verify CLI command output details in 9800CL	To verify CLI command output details in 9800CL	Passed	
--------------------	---	--	--------	--

## New Countries Supporting 6-GHz Radio Band

Logical ID	Title	Description	Status	Defect ID
EWLCJ1713S_6ENC_1	Join AP 9166I/ AP9164I to one controller	Adding AP 9166I/ AP9164I to the controller using CLI.	Passed	
EWLCJ1713S_6ENC_2	Create AP Join profile with one country code	Configure AP Join Profile with country code	Passed	
EWLCJ1713S_6ENC_3	Create Tags & Mapping to AP.	Configuring Tags & mapping to AP.	Passed	
EWLCJ1713S_6ENC_4	Configure country code for AP.	Configuring country code & check whether AP is in 6GHZ radio frequency	Passed	
EWLCJ1713S_6ENC_5	Configure WLAN with WPA Security and PSK Auth	Verify able to Config WLAN with WPA Security and PSK Auth	Passed	
EWLCJ1713S_6ENC_6	Configure WLAN with WPA-2 security and PSK Auth	verify able to config WLAN with WPA-2 security and PSK Auth	Passed	
EWLCJ1713S_6ENC_7	Configuring WLAN with WPA3-Dot1x security	verify able to config WLAN with WPA3-Dot1x security	Passed	
EWLCJ1713S_6ENC_8	Connect with an android client with WPA3 - Dot1x configured WLAN	To Verify with an android client with WPA3 - Dot1x configured WLAN	Passed	
EWLCJ1713S_6ENC_9	Connect with an IOS client with WPA3 - Dot1x configured WLAN	To Verify with an IOS client with WPA3 - Dot1x configured WLAN	Passed	
EWLCJ1713S_6ENC_10	Connect with an windows client with WPA3 - Dot1x configured WLAN	To Verify with an windows client with WPA3 - Dot1x configured WLAN	Passed	

EWLCJ1713S_6ENC_11	Connect with an MAC client with WPA3 - Dot1x configured WLAN	To Verify with an MAC client with WPA3 - Dot1x configured WLAN	Passed	
EWLCJ1713S_6ENC_12	Connect with an Surface client with WPA3 - Dot1x configured WLAN	To Verify with an surface client with WPA3 - Dot1x configured WLAN	Passed	CSCwh16937
EWLCJ1713S_6ENC_13	Connect with an Google pixel 7 pro client with WPA3 - Dot1x configured WLAN	To Verify with an Google pixel 7 pro client with WPA3 - Dot1x configured WLAN	Passed	
EWLCJ1713S_6ENC_14	Connect with an Samsung S22 ultra client with WPA3 - Dot1x configured WLAN	To Verify with an Samsung S22 ultra client with WPA3 - Dot1x configured WLAN	Passed	
EWLCJ1713S_6ENC_15	Connect with an Apple iPad 4th gen client with WPA3 - Dot1x configured WLAN	To Verify with an Apple iPad 4th gen client with WPA3 - Dot1x configured WLAN	Passed	
EWLCJ1713S_6ENC_16	Configuring WLAN with WPA3-SAE security	verify able to config WLAN with WPA3- SAE security	Passed	
EWLCJ1713S_6ENC_17	Connect with an android client with WPA-3 security	To Verify with an android client with WPA-3 security	Passed	
EWLCJ1713S_6ENC_18	Connect with an IOS client with WPA-3 security	To Verify with an IOS client with WPA-3 security	Passed	
EWLCJ1713S_6ENC_19	Connect with an windows client with WPA-3 security	To Verify with an windows client with WPA-3 security	Passed	
EWLCJ1713S_6ENC_20	Connect with an MAC client with WPA-3 security	To Verify with an MAC client with WPA-3 security	Passed	
EWLCJ1713S_6ENC_21	Connect with an Surface client with WPA-3 security	To Verify with an surface client with WPA-3 security	Passed	

EWLCJ1713S_6ENC_22	Connect with an Google pixel 7 pro client with WPA3 -SAE security.	To Verify with an Google pixel 7 pro client with WPA3 -SAE security.	Passed	
EWLCJ1713S_6ENC_23	Connect with an Samsung S22 ultra client with WPA3 -SAE security.	To Verify with an Samsung S22 ultra client with WPA3 -SAE security.	Passed	
EWLCJ1713S_6ENC_24	Connect with an Apple iPad 4th gen client with WPA3 -SAE security.	To Verify with an Apple iPad 4th gen client with WPA3 -SAE security.	Passed	
EWLCJ1713S_6ENC_25	Configure Roaming between controllers	To configure Roaming between controllers	Passed	
EWLCJ1713S_6ENC_26	Configure AP in flex mode	To verify whether able to config AP in Flex mode.	Passed	CSCwh52111
EWLCJ1713S_6ENC_27	Configure AP in Sniffer mode	To verify whether able to config AP in Sniffer. mode.	Passed	
EWLCJ1713S_6ENC_28	Do RRM related changes to 6GHz radio and check for client connectivity	To do RRM config changes and verify client connectivity on 6GHz radio	Passed	

## WPA3 - enhance RA tracing for SAE auth messages

Logical ID	Title	Description	Status	Defect ID
EWLCJ1713S_RASAE_1	Generate RA Trace for Client connected to WPA3-SAE security from UI	To Generate and Verify the RA Trace for Client connected to WPA3-SAE from UI	Passed	
EWLCJ1713S_RASAE_2	Generate RA Trace for Client connected to WPA3-SAE security from CLI	To Generate and Verify the RA Trace for Client connected to WPA3-SAE from CLI	Passed	CSCwh05044
EWLCJ1713S_RASAE_3	Generate RA Trace for Client connected to WPA3-FT+SAE security from UI	To Generate and Verify the RA Trace for Client connected to WPA3-FT+SAE from UI	Passed	
EWLCJ1713S_RASAE_4	Generate RA Trace for Client connected to WPA3-FT+SAE security from CLI	To Generate and Verify the RA Trace for Client connected to WPA3-FT+SAE from CLI	Failed	CSCwh82768
EWLCJ1713S_RASAE_5	Generate RA trace with SAE password element as both H2E and HNP	To generate and verify RA trace with SAE password element as both H2E and HNP	Passed	
EWLCJ1713S_RASAE_6	Generate RA trace with SAE password element as H2E	To generate and verify RA trace with SAE password element as H2E	Passed	
EWLCJ1713S_RASAE_7	Generate RA trace with SAE password element as HNP	To generate and verify RA trace with SAE password element as HNP	Passed	

EWLCJ1713S_RASAE_8	Generate RA trace with SAE password element as both H2E and HNP in CLI	To generate and verify RA trace with SAE password element as both H2E and HNP in CLI	Failed	CSCwh12532
EWLCJ1713S_RASAE_9	Generate RA trace with SAE password element as H2E in CLI	To generate and verify RA trace with SAE password element as H2E in CLI	Passed	
EWLCJ1713S_RASAE_10	Generate RA trace with SAE password element as HNP in CLI	To generate and verify RA trace with SAE password element as HNP in CLI	Passed	
EWLCJ1713S_RASAE_11	Generate RA Trace for Windows client	To generate and verify RA Trace for Windows client connected with WPA3-SAE	Passed	CSCwh05221
EWLCJ1713S_RASAE_12	Generate RA Trace for Android client	To generate and verify RA Trace for Android client connected with WPA3-SAE	Passed	
EWLCJ1713S_RASAE_13	Generate RA Trace for mac client	To generate and verify RA Trace for mac client connected with WPA3-SAE	Passed	
EWLCJ1713S_RASAE_14	Generate RA Trace for iOS client	To generate and verify RA Trace for iOS client connected with WPA3-SAE	Passed	
EWLCJ1713S_RASAE_15	Generate RA Trace for Surface client	To generate and verify RA Trace for surface client connected with WPA3-SAE	Passed	
EWLCJ1713S_RASAE_16	WPA3-SAE security with MAC Filtering	To Generate and Verify the RA Trace for Client connected to WPA3-SAE with MAC Filtering	Passed	

EWLCJ1713S_RASAE_17	WPA3-FT+SAE security with MAC Filtering	To Generate and Verify the RA Trace for Client connected to WPA3-FT+SAE with MAC Filtering	Passed	
EWLCJ1713S_RASAE_18	WPA3-SAE security with MAC Filtering with wrong client	To Generate and Verify the RA Trace for non mac filtered Client connecting to WPA3-SAE with MAC Filtering	Passed	CSCwh28793
EWLCJ1713S_RASAE_19	WPA3-FT+SAE security with MAC Filtering with wrong client	To Generate and Verify the RA Trace for non mac filtered Client connected to WPA3-FT+SAE with MAC Filtering	Passed	
EWLCJ1713S_RASAE_20	WPA3-SAE security with wrong Password	To Generate and Verify RA Trace for Client Connected to WPA3-SAE security with wrong Password	Passed	
EWLCJ1713S_RASAE_21	WPA3-FT+SAE security with wrong Password	To Generate and Verify RA Trace for Client Connected to WPA3-FT+SAE security with wrong Password	Passed	CSCwh68215
EWLCJ1713S_RASAE_22	Roam client between 2.4GHz, 5GHz and 6GHz	To Generate and Verify RA Trace for WPA3-SAE client and Roam between Radios	Passed	CSCwh03526
EWLCJ1713S_RASAE_23	Roam client between 2 different Aps	To Generate and Verify RA Trace for WPA3-SAE client and Roam between Aps	Passed	

EWLCJ1713S_RASAE_24	Deauthentication the client and Check the RA Trace logs	To Generate and Verify RA Trace for Client disconnect logs	Passed	
EWLCJ1713S_RASAE_25	Connect clients to AP in different country code and check the RA Trace logs	To Connect clients to AP in different country code and check the RA Trace logs	Passed	
EWLCJ1713S_RASAE_26	Connect clients to 2.4GHz radio after changing RRM parameters	To Connect multiple clients to 2.4GHz radio after changing RRM parameters and verify the RA Trace logs collected	Passed	
EWLCJ1713S_RASAE_27	Connect clients to 5GHz radio after changing RRM parameters	To Connect multiple clients to 5GHz radio after changing RRM parameters and verify the RA Trace logs collected	Passed	



## WPA3 192 support for newer model AP's

Logical ID	Title	Description	Status	Defect ID
EWLCJ1713S_WSNM_1	Suite 192-1X for WPA3 Security GCMP256 for Country codes of Japan	To check and connect suite 192-1X for WPA3 Security GCMP256 for Country codes of Japan	Passed	
EWLCJ1713S_WSNM_2	Suite 192-1X for WPA3 Security GCMP256 for Country codes of UAE	To check and connect suite 192-1X for WPA3 Security GCMP256 for Country codes of UAE	Passed	
EWLCJ1713S_WSNM_3	Suite 192-1X for WPA3 Security GCMP256 for Country codes of United States	To check and connect suite 192-1X for WPA3 Security GCMP256 for Country codes of United States	Passed	
EWLCJ1713S_WSNM_4	Suite 192-1X for WPA3 Security GCMP256 for Country codes of Chile	To check and connect suite 192-1X for WPA3 Security GCMP256 for Country codes of Chile	Passed	
EWLCJ1713S_WSNM_5	Suite 192-1X for WPA3 Security GCMP256 with RRM for 5 ghz Channel width of 160 MHz	To change channel width to 160 MHz with RRM for 5 ghz in Suite 192-1X for WPA3 Security	Passed	
EWLCJ1713S_WSNM_6	Suite 192-1X for WPA3 Security GCMP256 with RRM for 5 ghz Channel width of 80 MHz	To change channel width to 80 MHz with RRM for 5 ghz in Suite 192-1X for WPA3 Security	Failed	CSCwh67505
EWLCJ1713S_WSNM_7	Suite 192-1X for WPA3 Security GCMP256 with RRM for 5 ghz Channel width of 40 MHz	To change channel width to 40 MHz with RRM for 5 ghz in Suite 192-1X for WPA3 Security	Passed	

EWLCJ1713S_WSNM_8	Suite 192-1X for WPA3 Security GCMP256 with RRM for 2.4 ghz for non overlapping channels	To check and connect Suite 192-1X for WPA3 Security GCMP256 with RRM for 2.4 ghz for non overlapping channels	Passed	
EWLCJ1713S_WSNM_9	Suite 192-1X for WPA3 Security GCMP256 for 9166 AP for Android Client	To check and connect Suite 192-1X for WPA3 Security GCMP256 for 9166 AP for Android Client	Passed	
EWLCJ1713S_WSNM_10	Suite 192-1X for WPA3 Security GCMP256 for 9166 AP for Windows Client	To check and connect Suite 192-1X for WPA3 Security GCMP256 for 9166 AP for Windows Client	Failed	CSCwh07772
EWLCJ1713S_WSNM_11	Suite 192-1X for WPA3 Security GCMP256 for 9166 AP for iOS Client	To check and connect Suite 192-1X for WPA3 Security GCMP256 for 9166 AP for iOS Client	Passed	
EWLCJ1713S_WSNM_12	Suite 192-1X for WPA3 Security GCMP256 for 9164 AP for Android Client	To check and connect Suite 192-1X for WPA3 Security GCMP256 for 9164 AP for Android Client	Passed	
EWLCJ1713S_WSNM_13	Suite 192-1X for WPA3 Security GCMP256 for 9164 AP for Windows Client	To check and connect Suite 192-1X for WPA3 Security GCMP256 for 9164 AP for Windows Client	Passed	
EWLCJ1713S_WSNM_14	Suite 192-1X for WPA3 Security GCMP256 for 9164 AP for iOS Client	To check and connect Suite 192-1X for WPA3 Security GCMP256 for 9164 AP for iOS Client	Passed	

EWLCJ1713S_WSNM_15	Suite 192-1X for WPA3 Security GCMP256 for 9124 AP for Android Client	To check and connect Suite 192-1X for WPA3 Security GCMP256 for 9124 AP for Android Client	Passed	
EWLCJ1713S_WSNM_16	Suite 192-1X for WPA3 Security GCMP256 for 9124 AP for Windows Client	To check and connect Suite 192-1X for WPA3 Security GCMP256 for 9124 AP for Windows Client	Passed	
EWLCJ1713S_WSNM_17	Suite 192-1X for WPA3 Security GCMP256 for 9124 AP for iOS Client	To check and connect Suite 192-1X for WPA3 Security GCMP256 for 9124 AP for iOS Client	Passed	
EWLCJ1713S_WSNM_18	Suite 192-1X for WPA3 GCMP256 for 9166 AP for Android client through CLI	To check and connect Suite 192-1X for WPA3 GCMP256 for 9166 AP Android client through CLI	Passed	
EWLCJ1713S_WSNM_19	Suite 192-1X for WPA3 GCMP256 for 9166 AP for iOS client through CLI	To check and connect Suite 192-1X for WPA3 GCMP256 for 9166 AP iOS client through CLI	Passed	
EWLCJ1713S_WSNM_20	Suite 192-1X for WPA3 GCMP256 for 9166 AP for Windows client through CLI	To check and connect Suite 192-1X for WPA3 GCMP256 for 9166 AP Windows client through CLI	Passed	
EWLCJ1713S_WSNM_21	Suite 192-1X for WPA3 GCMP256 for 9164 AP for iOS client through CLI	To check and connect Suite 192-1X for WPA3 GCMP256 for 9164 AP iOS client through CLI	Passed	

EWLCJ1713S_WSNM_22	Suite 192-1X for WPA3 GCMP256 for 9164 AP for Android client through CLI	To check and connect Suite 192-1X for WPA3 GCMP256 for 9164 AP Android client through CLI	Passed	
EWLCJ1713S_WSNM_23	Suite 192-1X for WPA3 GCMP256 for 9164 AP for Windows client through CLI	To check and connect Suite 192-1X for WPA3 GCMP256 for 9164 AP Windows client through CLI	Passed	
EWLCJ1713S_WSNM_24	Suite 192-1X for WPA3 GCMP256 for 9124 AP for Windows client through CLI	To check and connect Suite 192-1X for WPA3 GCMP256 for 9124 AP Windows client through CLI	Passed	
EWLCJ1713S_WSNM_25	Suite 192-1X for WPA3 GCMP256 for 9124 AP for Android client through CLI	To check and connect Suite 192-1X for WPA3 GCMP256 for 9124 AP Android client through CLI	Passed	
EWLCJ1713S_WSNM_26	Suite 192-1X for WPA3 GCMP256 for 9124 AP for iOS client through CLI	To check and connect Suite 192-1X for WPA3 GCMP256 for 9124 AP iOS client through CLI	Passed	
EWLCJ1713S_WSNM_27	To capture Frames for 192 1x WPA3 Security through Wireshark	To connect 192 1x WPA3 Security and capture Frames through Wireshark	Passed	
EWLCJ1713S_WSNM_28	Suite 192-1X for WPA3 Security GCMP256 for EWC Controller	To Connect Suite 192-1X for WPA3 Security GCMP256 for EWC Controller	Passed	
EWLCJ1713S_WSNM_29	Suite 192-1X for WPA3 Security GCMP256 for Cloud Controller	To connect Suite 192-1X for WPA3 Security GCMP256 for Cloud Controller	Passed	



## Regression Features

- 11ax Advanced traffic based scheduler for scheduling SU, OFDMA and MU traffic on 9105/9115/9120, on page 49
- Calendar profile enhancements, on page 53
- Configuring transition mode and pure WPA3 (6Ghz) on the same WLAN profile, on page 55
- Dot1x+EWA on mac Failure, on page 58
- Ease of debugging (incorporating WLC and AP debugs), on page 61
- EasyPSK Phase 2 : WLAN Client Onboarding without Registration (local switching), on page 64
- Enable AP fallback to primary, secondary or tertiary controllers under AP Join Profile, on page 68
- Enhancement in client steering during Rolling AP Upgrade, on page 71
- Enhancements of Rogue detection (Include Channel Width), on page 74
- Enhancements on AP Location , on page 76
- Enhancements to archive traces based on time range , on page 77
- EWC support for WiFi6 AP's, on page 83
- HA SSO RMI, on page 85
- iCAP Hardening [Device Dependency], on page 88
- Intelligent AP auditing on WLC, on page 90
- Intelligent Capture OTA Sniffer Device Work, on page 93
- Intelligently disable 24GHz radios, on page 96
- Interferer recording [CleanAir Pro] , on page 99
- IP Theft on 9800 WLC [Central Mode of operation], on page 102
- KPIs for AP Health via WLC and AP, on page 107
- N+1 Hitless Upgrade - Site based Upgrade, on page 109
- New Device Support for 9164/9166 AP, on page 112
- OEAP URL based ACLs for split tunnel, on page 117
- Per client Bidirectional rate limiting, flex local switching, on page 119
- PER SSID filtering for assurance on Cat9800, on page 122
- Provide alert mechanism on web-ui for critical events on controller, on page 125
- PSK + Multi Auth Support for Guest, on page 126
- Rogue PMF Containment and improve detection, on page 128
- Scheduling of SSID broadcast, on page 131
- Smart Licencing , on page 133
- SSID per radio on Dual 5G, on page 134
- Open RRM , on page 137

- Systemic CAP - Enable Secure Data Wipe capabilities for Legacy Products (Wireless - AP), on page 139
- To share Client Delete reason code at AP to controller, on page 146
- Ultra Low End 9800-CL, on page 149
- WLC: Improve Embedded Packet Capture (EPC), on page 153
- WPA3 SAE client exclusion optimization for local mode, on page 156
- SRCFD, on page 157

## 11ax Advanced traffic based scheduler for scheduling SU, OFDMA and MU traffic on 9105/9115/9120

Logical ID	Title	Description	Status	Defect ID
EWLCJ1713S_Reg_124	Configuring 11ax Access Points, Channel width, OFDMA & radio parameters for 5Ghz band.	To configure 11ax Access Points, Channel width, OFDMA & radio parameters for 5Ghz band.	Passed	CSCwh16833
EWLCJ1713S_Reg_125	Configuring 11ax Access Points, Channel width, OFDMA & radio parameters for 2.4Ghz band.	To configure 11ax Access Points, Channel width, OFDMA & radio parameters for 2.4Ghz band.	Passed	
EWLCJ1713S_Reg_126	Monitor traffic with 11ax Android client connected.	To verify OFDMA details with 11ax Android client connected.	Passed	
EWLCJ1713S_Reg_127	Monitor traffic with 11ax iPhone client connected.	To verify OFDMA details with 11ax iPhone client connected.	Passed	
EWLCJ1713S_Reg_128	Monitor traffic with non 11ax Windows client connected.	To verify OFDMA details with non 11ax Windows client connected.	Passed	
EWLCJ1713S_Reg_129	Monitor traffic with non 11ax Mac client connected.	To verify OFDMA details with non 11ax Mac client connected.	Passed	
EWLCJ1713S_Reg_130	Monitor traffic by connecting client to 2.4Ghz radio.	To verify OFDMA details by connecting client to 2.4Ghz radio.	Passed	
EWLCJ1713S_Reg_131	Verify OFDMA details with client connecting to WPA2 - PSK configured WLAN	To verify OFDMA details with client connecting to WPA2 - PSK configured WLAN	Passed	

EWLCJ1713S_Reg_132	Verify OFDMA details with client connecting to WPA3 - Dot1x configured WLAN	To verify OFDMA details with client connecting to WPA3 - Dot1x configured WLAN	Passed	
EWLCJ1713S_Reg_133	Connect upto 8 clients and monitor DL/UL OFDMA statistics	To connect upto 8 clients and monitor DL/UL OFDMA statistics	Passed	
EWLCJ1713S_Reg_134	Modify spatial stream config to 1 stream and monitor OFDMA statistics.	To modify spatial stream config to 1 stream and monitor OFDMA statistics.	Passed	
EWLCJ1713S_Reg_135	Modify spatial stream config to 2 streams and monitor OFDMA statistics.	To modify spatial stream config to 2 streams and monitor OFDMA statistics.	Passed	
EWLCJ1713S_Reg_136	Modify spatial stream config to 3 streams and monitor OFDMA statistics.	To modify spatial stream config to 3 streams and monitor OFDMA statistics.	Passed	
EWLCJ1713S_Reg_137	Modify spatial stream config to 4 streams and monitor OFDMA statistics.	To modify spatial stream config to 4 streams and monitor OFDMA statistics.	Passed	
EWLCJ1713S_Reg_138	Enable video stream and monitor DL/UL OFDMA statistics	To enable video stream and monitor DL/UL OFDMA statistics	Passed	
EWLCJ1713S_Reg_139	Modify MCS data rates & monitor OFDMA stats with 11ax Android client connected.	To modify MCS data rates & monitor OFDMA stats with 11ax Android client connected.	Passed	
EWLCJ1713S_Reg_140	Configuring 11ax Access Points, Channel width, 11ax MU & radio parameters for 5Ghz band.	To configure 11ax Access Points, Channel width, 11ax MU & radio parameters for 5Ghz band.	Passed	
EWLCJ1713S_Reg_141	Configuring 11ax Access Points, Channel width, 11ax MU & radio parameters for 2.4Ghz band.	To configure 11ax Access Points, Channel width, 11ax MU & radio parameters for 2.4Ghz band.	Failed	CSCwh72176



EWLCJ1713S_Reg_142	Monitor traffic with 11ax Android client connected.	To verify 11ax MU details with 11ax Android client connected.	Passed	
EWLCJ1713S_Reg_143	Monitor traffic with 11ax iPhone client connected.	To verify 11ax MU details with 11ax iPhone client connected.	Passed	
EWLCJ1713S_Reg_144	Monitor traffic with non 11ax Windows client connected.	To verify 11ax MU details with non 11ax Windows client connected.	Passed	
EWLCJ1713S_Reg_145	Monitor traffic with non 11ax Mac client connected.	To verify 11ax MU details with non 11ax Mac client connected.	Passed	
EWLCJ1713S_Reg_146	Monitor traffic by connecting client to 2.4Ghz radio.	To verify 11ax MU details by connecting client to 2.4Ghz radio.	Passed	
EWLCJ1713S_Reg_147	Verify 11ax MU details with client connecting to WPA2 - PSK configured WLAN	To verify 11ax MU details with client connecting to WPA2 - PSK configured WLAN	Passed	
EWLCJ1713S_Reg_148	Verify 11ax MU details with client connecting to WPA3 - Dot1x configured WLAN	To verify 11ax MU details with client connecting to WPA3 - Dot1x configured WLAN	Passed	
EWLCJ1713S_Reg_149	Connect upto 8 clients and monitor DL/UL 11ax MU statistics	To connect upto 8 clients and monitor DL/UL 11ax MU statistics	Passed	
EWLCJ1713S_Reg_150	Check 11ax MU stats with roaming client scenario	Check 11ax MU stats with roaming client scenario	Passed	
EWLCJ1713S_Reg_151	Monitor 11ax traffic over mixed mode with both OFDMA and SU, MU traffic	To monitor 11ax traffic over mixed mode with both OFDMA and SU, MU traffic	Passed	

EWLCJ1713S_Reg_152	Monitor 11ax traffic over mixed mode with both OFDMA and SU, MU traffic for AP models - 9105, 9115, 9120	To monitor 11ax traffic over mixed mode with both OFDMA and SU, MU traffic - 9105, 9115, 9120	Passed	
--------------------	--	---	--------	--

## Calendar profile enhancements

Logical ID	Title	Description	Status	Defect ID
EWLCJ1713S_Reg_362	Configure Daily Calendar Profile	Check whether able to configure Daily Calendar Profile	Passed	
EWLCJ1713S_Reg_363	Configure Weekly Calendar Profile	Check whether able to configure Weekly Calendar Profile	Passed	
EWLCJ1713S_Reg_364	Configure Monthly Calendar Profile	Check whether able to configure Monthly Calendar Profile	Passed	
EWLCJ1713S_Reg_365	Configure Daily, Weekly and Monthly Calendar Profile through CLI	Check whether able to configure Daily, Weekly and Monthly Calendar Profile through CLI	Passed	
EWLCJ1713S_Reg_366	Map Calendar Profile to a Policy Profile	Check whether able to Map Calendar Profile to a Policy Profile	Passed	
EWLCJ1713S_Reg_367	Try deleting the calendar profile when it is already attached to the policy profile	Check whether able to try deleting the calendar profile when it is already attached to the policy profile	Passed	
EWLCJ1713S_Reg_368	While the calendar profile is attached to policy profile, update the timer range for calendar profile	Check whether able to update the timer range for calendar profile	Passed	
EWLCJ1713S_Reg_369	Delete the calendar profile from the policy profile	Check whether able to delete the calendar profile from the policy profile	Passed	
EWLCJ1713S_Reg_370	Map multiple calendar profiles to a Policy Profile	Check whether able to Map multiple calendar profiles to a Policy Profile	Passed	

EWLCJ1713S_Reg_371	Verify Windows client is able to connect to the WLAN only during the configured times	Check whether able to verify Windows client is able to connect to the WLAN only during the configured times	Passed	
EWLCJ1713S_Reg_372	Verify Android client is able to connect to the WLAN only during the configured times	Check whether able to verify Android client is able to connect to the WLAN only during the configured times	Passed	
EWLCJ1713S_Reg_373	Verify IOS client is able to connect to the WLAN only during the configured times	Check whether able to verify IOS client is able to connect to the WLAN only during the configured times	Passed	
EWLCJ1713S_Reg_374	Verify MAC client is able to connect to the WLAN only during the configured times	Check whether able to verify MAC client is able to connect to the WLAN only during the configured times	Passed	
EWLCJ1713S_Reg_375	Verify Surface client is able to connect to the WLAN only during the configured times	Check whether able to verify Surface client is able to connect to the WLAN only during the configured times	Passed	
EWLCJ1713S_Reg_376	Verify client is able to connect to the WLAN in Flex mode only during the configured times	Check whether able to verify client is able to connect to the WLAN in Flex mode only during the configured times	Passed	
EWLCJ1713S_Reg_377	Verify client is able to connect to the WLAN in Inter/Intra roaming connectivity	Check whether able to Verify client is able to connect to the WLAN in Inter/Intra roaming connectivity.	Passed	

## Configuring transition mode and pure WPA3 (6Ghz) on the same WLAN profile

Logical ID	Title	Description	Status	Defect ID
EWLCJ1713S_Reg_706	Create pure 6ghz [PMF 802.1X] in transition mode	To create and connect pure 6ghz [PMF 802.1X] in transition mode with 802.1x security	Passed	
EWLCJ1713S_Reg_707	Create pure 6ghz [PMF 802.1X] in transition mode	To create and connect pure 6ghz [PMF 802.1X] in transition mode with CCKM	Passed	
EWLCJ1713S_Reg_708	Create pure 6ghz SAE in transition mode [PMF PSK] and PSK	To create and connect pure 6ghz [SAE] in transition mode with [PMF PSK ]and PSK	Passed	
EWLCJ1713S_Reg_709	Create pure 6ghz [SAE] in transition mode	To create and connect pure 6ghz [SAE] in transition mode with PSK security	Passed	
EWLCJ1713S_Reg_710	Create pure 6ghz [SUITEB-1X] in transition mode	To create and connect pure 6ghz [SUITEB-1X] in transition mode with GCMP128	Passed	
EWLCJ1713S_Reg_711	Create pure 6ghz SAE in transition mode [PMF PSK]	To create and connect pure 6ghz [SAE] in transition mode with [PMF PSK ]	Passed	
EWLCJ1713S_Reg_712	Create pure 6ghz [AES] [ PMF 802.1X] in transition mode	To create and connect pure 6ghz [AES] [ PMF 802.1X] in transition mode	Passed	
EWLCJ1713S_Reg_713	Create pure 6ghz [SUITEB-192-1X] in transition mode for CCMP256	To create and connect pure 6ghz [SUITEB-192-1X] in transition mode CCMP256	Passed	

## Configuring transition mode and pure WPA3 (6Ghz) on the same WLAN profile

EWLCJ1713S_Reg_714	Create pure 6ghz [SUITEB-192-1X] in transition mode for GCMP256	To create and connect pure 6ghz [SUITEB-192-1X] in transition mode GCMP256	Passed	
EWLCJ1713S_Reg_715	Roaming client from 6ghz band to 5 ghz band for transition mode	To perform Roaming client from 6ghz band to 5 ghz band for transition mode	Passed	
EWLCJ1713S_Reg_716	Roaming client from 6ghz band to 2.4 ghz band for transition mode	To perform Roaming client from 6ghz band to 2.4 ghz band for transition mode	Passed	
EWLCJ1713S_Reg_717	Roaming client from 2.4ghz band to 6ghz band	To perform Roaming client from 2.4 ghz band to 6ghz band for transition mode	Passed	
EWLCJ1713S_Reg_718	Roaming client from 5 ghz band to 6ghz band	To perform Roaming client from 5 ghz band to 6ghz band for transition mode	Passed	
EWLCJ1713S_Reg_719	Transition mode as Fast transition SAE with PSK security	To create and connect Transition mode as Fast transition SAE with PSK security	Passed	
EWLCJ1713S_Reg_720	Create pure 6ghz in transition mode for 9800-80 Controller	To create and connect pure 6ghz in transition mode for 9800-80 Controller	Passed	
EWLCJ1713S_Reg_721	Create pure 6ghz in transition mode for 9800-40 Controller	To create and connect pure 6ghz in transition mode for 9800-40 Controller	Passed	
EWLCJ1713S_Reg_722	Create pure 6ghz in transition mode for 9800-L Controller	To create and connect pure 6ghz in transition mode for 9800-L Controller	Passed	

EWLCJ1713S_Reg_723	Create pure 6ghz in transition mode for 9800-CL Controller	To create and connect pure 6ghz in transition mode for 9800-CL Controller	Passed	
EWLCJ1713S_Reg_724	Connect pure 6ghz in transition mode for android clients	To check and connect pure 6ghz in transition mode for android clients	Passed	
EWLCJ1713S_Reg_725	Connect pure 6ghz in transition mode for mac clients	To check and connect pure 6ghz in transition mode for mac clients	Passed	
EWLCJ1713S_Reg_726	Connect pure 6ghz in transition mode for windows clients	To check and connect pure 6ghz in transition mode for windows clients	Passed	
EWLCJ1713S_Reg_727	Connect pure 6ghz in transition mode for surface clients	To check and connect pure 6ghz in transition mode for surface clients	Passed	

## Dot1x+EWA on mac Failure

Logical ID	Title	Description	Status	Defect ID
EWLCJ1713S_Reg_190	Verifying the Dot1x+EWA support with mac failure.	To verify the Dot1x+EWA support with mac filter Configuration.	Passed	
EWLCJ1713S_Reg_191	Verifying the Dot1x+EWA support with mac filter by connecting the windows client.	To verify the Client packets by connecting the windows client to dot1x and EWA supported SSID	Passed	
EWLCJ1713S_Reg_192	Verifying the Dot1x+EWA support with mac filter by connecting the Android client.	To verify the Client packets by connecting the Android client to Dot1x+EWA supported SSID	Passed	
EWLCJ1713S_Reg_193	Verifying the Dot1x+EWA support with mac filter by connecting the Mac os client.	To verify the Client packets by connecting the Mac os client to Dot1x+EWA supported SSID	Passed	
EWLCJ1713S_Reg_194	Verifying the Dot1x+EWA support with mac filter by connecting the samsung10 client.	To verify the Client packets by connecting the S10 os client to Dot1x+EWA supported SSID	Passed	
EWLCJ1713S_Reg_195	Verifying the Dot1x+EWA support with Wpa2 security mac failure	To verify the Dot1x+EWA Configuration with wpa2 supported SSID	Passed	
EWLCJ1713S_Reg_196	Verifying the Dot1x+EWA support with Wpa3 security .	To verify the Dot1x+EWA Configuration with wpa3 supported SSID	Passed	
EWLCJ1713S_Reg_197	Validating the Dot1x+EWA support and Layer 2 On Mac filter	To verify the Dot1x+EWA support and Layer3 On Mac filter failure	Passed	



EWLCJ1713S_Reg_198	verifying the Dot1x+EWA supooort with Layer3 Splash page web redirect.	To verify the Dot1x+EWA supooort with Layer3 Splash page web redirect.	Passed	
EWLCJ1713S_Reg_199	Verifying the EWA supooort with 802.1x-SHA256 security.	To verify the EWA supooort with 802.1x-SHA256 security for the different clients.	Passed	
EWLCJ1713S_Reg_200	Verifying the Dot1x+EWA supooort with Ft	To verify the Dot1x+EWA supooort with +Ft for the different clients.	Passed	
EWLCJ1713S_Reg_201	Verifying the Dot1x+EWA supooort with Intra client roaming by using 9115AP	To verify the Intra client roaming by using Dot1x+EWA supooort with 9115AP	Passed	
EWLCJ1713S_Reg_202	Verifying the Dot1x+EWA security with Inter WLC Roaming	To verify inter WLC Roaming between WLANs with Dot1x+EWA support	Passed	
EWLCJ1713S_Reg_203	Verifying the Dot1x+EWA supooort with Roaming between Controllers with Different Radio types	To verify whether Client is Moving between Controllers with Different Radio type or not with dot1x+EWA WLAN.	Passed	
EWLCJ1713S_Reg_204	Verifying the Dot1x+EWA supooort Roaming between Controllers with same Radio types	To verify whether Client is Moving between Controllers with same Radio type or not with dot1x+EWA WLAN.	Passed	
EWLCJ1713S_Reg_205	Verifying the Dot1x+EWA supooort with local auth and local switching.	To verify the Dot1x+EWA security in local auth and local switching.	Passed	

EWLCJ1713S_Reg_206	Verifying the Dot1x+EWA support with mac filter by connecting the MS GO2 client.	To verify the Client packets by connecting the MS GO2 client to dot1x and EWA supported SSID	Passed	
EWLCJ1713S_Reg_207	Verifying the Dot1x+EWA support with mac filter by connecting the Sleeping client	To verify the Client packets by connecting the sleeping client to dot1x and EWA supported SSID	Passed	
EWLCJ1713S_Reg_208	Validate client association in DNAC	To verify client details showing or not in DANC	Passed	
EWLCJ1713S_Reg_209	Validate client association in PI	To verify client details showing or not in PI	Passed	
EWLCJ1713S_Reg_210	Configure wlan with EWA in DNAC & check client details in DNA space	To verify wlan created or not in DANC	Passed	

## Ease of debugging (incorporating WLC and AP debugs)

Logical ID	Title	Description	Status	Defect ID
EWLCJ1713S_Reg_598	Check to create client debug bundle for single client	To create and start client debug bundle for single client	Passed	
EWLCJ1713S_Reg_599	Check to create client debug bundle for five clients	To create and start client debug bundle for five clients	Passed	
EWLCJ1713S_Reg_600	Check to create client debug bundle for more than 10 clients	To create and start client debug bundle for more than 10 clients	Passed	
EWLCJ1713S_Reg_601	Check to stop and collect client debug bundle for five clients	To stop and collect client debug bundle for five clients	Passed	
EWLCJ1713S_Reg_602	Check to stop and collect client debug bundle for specific client	To stop and collect client debug bundle for specific clients in given 10 clients	Passed	
EWLCJ1713S_Reg_603	Check for abort or cancel client debug bundle	To Check whether the client debug bundle can be aborted or cancelled in between	Passed	
EWLCJ1713S_Reg_604	Check the Collected client debug bundle	To Check and Verify the tar file collected from client debug bundle	Passed	
EWLCJ1713S_Reg_605	Check to create client debug bundle with monitor timing	To start client debug bundle with monitor timing and to check it is stopped after exceeding monitor time	Passed	
EWLCJ1713S_Reg_606	Check for abort or cancel client debug bundle with monitor timing	To Check whether the client debug bundle can be aborted or cancelled before the monitor time	Passed	

EWLCJ1713S_Reg_607	Check the Collected client debug bundle with monitor time	To Check and Verify the tar file collected from client debug bundle with monitor time	Passed	
EWLCJ1713S_Reg_608	Check to create client debug bundle with epc	To start client debug bundle with epc	Passed	
EWLCJ1713S_Reg_609	Check the Collected client debug bundle with epc	To Check and Verify the tar file collected from client debug bundle with epc	Passed	
EWLCJ1713S_Reg_610	Start and Collected client debug bundle with epc and monitor timing	To Start and Verify the tar file collected from client debug bundle with epc and monitor timing	Passed	
EWLCJ1713S_Reg_611	Start and Collected client debug bundle with ap-archive with critical level	To Start and Verify the tar file collected from client debug bundle with ap-archive with critical level	Passed	
EWLCJ1713S_Reg_612	Start and Collected client debug bundle with ap-archive with debug level	To Start and Verify the tar file collected from client debug bundle with ap-archive with debug level	Passed	
EWLCJ1713S_Reg_613	Start and Collected client debug bundle with ap-archive with error level	To Start and Verify the tar file collected from client debug bundle with ap-archive with error level	Passed	
EWLCJ1713S_Reg_614	Start and Collected client debug bundle with ap-archive with verbose level	To Start and Verify the tar file collected from client debug bundle with ap-archive with verbose level	Passed	

EWLCJ1713S_Reg_615	Start and Collected client debug bundle with epc and monitor timing and ap-archive	To Start and Verify the tar file collected from client debug bundle with epc and monitor timing and ap-archive	Passed	
--------------------	--	--	--------	--

## EasyPSK Phase 2 : WLAN Client Onboarding without Registration (local switching)

Logical ID	Title	Description	Status	Defect ID
EWLCJ1713S_Reg_53	Verify you can configure a wlan with easy psk feature on it when aaa override is set on the associated policy profile. Verify no syslog is thrown.	To Verify whether you can configure a wlan with easy psk feature on it when aaa override is set on the associated policy profile. Verify no syslog is thrown.	Passed	
EWLCJ1713S_Reg_54	Verify that if you configure a wlan with easy psk feature and its associated policy profile does not have the aaa override set, a syslog is thrown.	To Verify that whether you configure a wlan with easy psk feature and its associated policy profile does not have the aaa override set, a syslog is thrown.	Passed	
EWLCJ1713S_Reg_55	Verify that it is not possible to configure Easy PSK if one of the following option is set on the same wlan: mPSK PSK key WPA3 CCKM dot1x	To Verify that it is not possible to configure Easy PSK if one of the following option is set on the same wlan: mPSK PSK key WPA3 CCKM dot1x	Passed	
EWLCJ1713S_Reg_56	Verify that it is not possible to configure any of the following option on a wlan where Easy PSK is enabled mPSK PSK key WPA3 CCKM dot1x	To Verify that it is not possible to configure any of the following option on a wlan where Easy PSK is enabled mPSK PSK key WPA3 CCKM dot1x	Passed	

EWLCJ1713S_Reg_57	Verify that when configuring the feature on a wlan that is pushed on an AP configured in flex mode, a syslog is thrown.	To Verify that when configuring the feature on a wlan that is pushed on an AP configured in flex mode, a syslog is thrown.	Passed	
EWLCJ1713S_Reg_58	Verify that the feature can't be configured on a EWC device	To Verify that the feature can't be configured on a EWC device	Passed	
EWLCJ1713S_Reg_59	Verify that if the feature is configured together with local authentication, a syslog is thrown.	To Verify that if the feature is configured together with local authentication, a syslog is thrown.	Passed	
EWLCJ1713S_Reg_60	Verify that if the feature is configured together with local switching, a syslog is thrown.	To Verify that if the feature is configured together with local switching, a syslog is thrown.	Passed	
EWLCJ1713S_Reg_61	With a valid configuration, save the configuration and perform a reboot. Verify that the configuration is kept and valid, and no syslog is thrown.	To verify with a valid configuration, save the configuration and perform a reboot. Verify that the configuration is kept and valid, and no syslog is thrown.	Passed	
EWLCJ1713S_Reg_62	Remove the Easy PSK feature from the configured wlan in the previous test through yang. Verify that the same config can be observed in the CLI.	To Remove the Easy PSK feature from the configured wlan in the previous test through yang. Verify that the same config can be observed in the CLI.	Passed	

EWLCJ1713S_Reg_63	Configure a new wlan with easy PSK through SNMP. Verify that the configuration is effective through CLI. Remove the easy PSK from the wlan and verify in the CLI that the same config is no longer applied.	To Configure a new wlan with easy PSK through SNMP. Verify that the configuration is effective through CLI. Remove the easy PSK from the wlan and verify in the CLI that the same config is no longer applied.	Passed	
EWLCJ1713S_Reg_64	Configure a wlan with easy PSK through CLI. Verify that the configuration is effective through SNMP.	To Configure a wlan with easy PSK through CLI. Verify that the configuration is effective through SNMP.	Passed	
EWLCJ1713S_Reg_65	Configure a wlan with Easy PSK feature through the CLI. Verify that you can get the same configuration through yang.	To Configure a wlan with Easy PSK feature through the CLI. Verify that you can get the same configuration through yang.	Passed	
EWLCJ1713S_Reg_66	Configure a WLAN with easy PSK, the Radius with two valid PSKs. Connect one client with the first PSK. Verify the exchange between the controller and the Radius with a capture (verify new AAA attributes are filled correctly). Verify that the client can ping the gateway	To Configure a WLAN with easy PSK, the Radius with two valid PSKs. Connect one client with the first PSK. Verify the exchange between the controller and the Radius with a capture (verify new AAA attributes are filled correctly). Verify that the client can ping the gateway	Passed	



EWLCJ1713S_Reg_67	Following the previous test, disconnect the client and connect it again using the second PSK. Verify again the Radius exchange and the client can reach Run state and can ping the gateway.	Following the previous test, disconnect the client and connect it again using the second PSK. Verify again the Radius exchange and the client can reach Run state and can ping the gateway.	Passed	
EWLCJ1713S_Reg_68	Configure 16 Wlan's with easy PSK enabled. Connect one client to each WLAN. Verify each client reaches Run state and can ping the gateway.	To Configure 16 Wlan's with easy PSK enabled. Connect one client to each WLAN. Verify each client reaches Run state and can ping the gateway.	Passed	
EWLCJ1713S_Reg_69	Configure an easy psk wlan using a aaa server that is not reachable. Verify that the client can't reach Run state and is deleted.	To Configure an easy psk wlan using a aaa server that is not reachable. Verify that the client can't reach Run state and is deleted.	Passed	
EWLCJ1713S_Reg_70	Configure a wlan with easy psk and webauth on mab failure. Make sure that the webauth on mab failure is not applied in case the client is connecting with a non supported passphrase.	To Configure a wlan with easy psk and webauth on mab failure. Make sure that the webauth on mab failure is not applied in case the client is connecting with a non supported passphrase.	Passed	

## Enable AP fallback to primary, secondary or tertiary controllers under AP Join Profile

Logical ID	Title	Description	Status	Defect ID
EWLCJ1713S_Reg_254	Check Whether any priming profiles are present in the 9800-L controller	To check Whether any priming profiles are present in the 9800-L controller	Passed	
EWLCJ1713S_Reg_255	Check Whether any priming profiles are present in the 9800-CL controller	To check Whether any priming profiles are present in the 9800-CL controller	Passed	
EWLCJ1713S_Reg_256	Check Whether any priming profiles are present in the 9800-80 controller	To check Whether any priming profiles are present in the 9800-80 controller	Passed	
EWLCJ1713S_Reg_257	Check Whether any per AP priming profiles are present in the 9105 AP	To check Whether any per AP priming profiles are present in the 9105 AP	Passed	
EWLCJ1713S_Reg_258	Check Whether any per AP priming profiles are present in the 9115 AP	To check Whether any per AP priming profiles are present in the 9115 AP	Passed	
EWLCJ1713S_Reg_259	Check Whether any per AP priming profiles are present in the 9120 AP	To check Whether any per AP priming profiles are present in the 9120 AP	Passed	
EWLCJ1713S_Reg_260	Check Whether any per AP priming profiles are present in the 9130 AP	To check Whether any per AP priming profiles are present in the 9130 AP	Passed	
EWLCJ1713S_Reg_261	Configure AP priming profiles and AP priming filters on 9800-L Controller	To configure AP priming profiles and AP priming filters on 9800-L Controller	Passed	
EWLCJ1713S_Reg_262	Configure AP priming profiles and AP priming filters on 9800-80 Controller	To configure AP priming profiles and AP priming filters on 9800-80 Controller	Passed	

EWLCJ1713S_Reg_263	Configure AP priming profiles and AP priming filters on 9800-CL Controller	To configure AP priming profiles and AP priming filters on 9800-CL Controller	Passed	
EWLCJ1713S_Reg_264	Configure primary controller on priming profile and check whether it is configured	To configure primary controller on priming profile and check whether it is configured	Passed	
EWLCJ1713S_Reg_265	Configure secondary controller on priming profile and check whether it is configured	To configure secondary controller on priming profile and check whether it is configured	Passed	
EWLCJ1713S_Reg_266	Configure tertiary controller on priming profile and check whether it is configured	To configure tertiary controller on priming profile and check whether it is configured	Passed	
EWLCJ1713S_Reg_267	Check Per AP priming Configurations on 9105 AP from 9800-L/CL/80 controllers	To check Per AP priming Configurations on 9105 AP from 9800-L/CL/80 controllers	Passed	
EWLCJ1713S_Reg_268	Check Per AP priming Configurations on 9115 AP from 9800-L/CL/80 controllers	To check Per AP priming Configurations on 9115 AP from 9800-L/CL/80 controllers	Passed	
EWLCJ1713S_Reg_269	Check Per AP priming Configurations on 9120 AP from 9800-L/CL/80 controllers	To check Per AP priming Configurations on 9120 AP from 9800-L/CL/80 controllers	Passed	
EWLCJ1713S_Reg_270	Check Per AP priming Configurations on 9120 AP from 9800-L/CL/80 controllers	To check Per AP priming Configurations on 9120 AP from 9800-L/CL/80 controllers	Passed	
EWLCJ1713S_Reg_271	Check whether the AP priming profile of Controller is pushed to 9105 AP joining the controller 9800-L/CL/80	To check whether the AP priming profile of Controller is pushed to 9105 AP joining the controller 9800-L/CL/81	Passed	

EWLCJ1713S_Reg_272	Check whether the AP priming profile of Controller is pushed to 9115 AP joining the controller 9800-L/CL/81	To check whether the AP priming profile of Controller is pushed to 9115 AP joining the controller 9800-L/CL/82	Passed	
EWLCJ1713S_Reg_273	Check whether the AP priming profile of Controller is pushed to 9120 AP joining the controller 9800-L/CL/82	To check whether the AP priming profile of Controller is pushed to 9120 AP joining the controller 9800-L/CL/83	Passed	
EWLCJ1713S_Reg_274	Check whether the AP priming profile of Controller is pushed to 9130 AP joining the controller 9800-L/CL/83	To check whether the AP priming profile of Controller is pushed to 9130 AP joining the controller 9800-L/CL/84	Passed	

## Enhancement in client steering during Rolling AP Upgrade

Logical ID	Title	Description	Status	Defect ID
EWLCJ1713S_Reg_348	Check client steering command while rolling ap upgrade	Verify client steering command is working or not for rolling ap upgrade	Passed	
EWLCJ1713S_Reg_349	Check client de-authentication command while rolling ap upgrade	Verify client deauthentication command is working or not for rolling ap upgrade	Passed	
EWLCJ1713S_Reg_350	Check 11v clients getting client deauth message with N+1 rolling ap upgrade with Security WPA2+PSK	Verify 11v clients getting client deauth message or not with N+1 rolling ap upgrade with Security WPA2+PSK	Passed	
EWLCJ1713S_Reg_351	Check 11v clients not getting client deauth message with N+1 rolling ap upgrade with Security WPA2+PSK	Verify 11v clients are not getting client deauth message with N+1 rolling ap upgrade with Security WPA2+PSK	Passed	
EWLCJ1713S_Reg_352	Check non 11v clients not getting client deauth message with N+1 rolling ap upgrade with Security WPA2+PSK	Verify non 11v clients are not getting client deauth message with N+1 rolling ap upgrade with Security WPA2+PSK	Passed	
EWLCJ1713S_Reg_353	Check 11v clients getting client deauth message with N+1 rolling ap upgrade with Security WPA3+PSK	Verify 11v clients getting client deauth message or not with N+1 rolling ap upgrade with Security WPA3+PSK	Passed	

EWLCJ1713S_Reg_354	Check 11v clients not getting client deauth message with N+1 rolling ap upgrade with Security WPA3+PSK	Verify 11v clients are not getting client deauth message with N+1 rolling ap upgrade with Security WPA3+PSK	Passed	
EWLCJ1713S_Reg_355	Check non 11v clients not getting client deauth message with N+1 rolling ap upgrade with Security WPA3+PSK	Verify non 11v clients are not getting client deauth message with N+1 rolling ap upgrade with Security WPA3+PSK	Passed	
EWLCJ1713S_Reg_356	Check 11v clients getting client deauth message with N+1 rolling ap upgrade with Security dot1X	Verify 11v clients getting client deauth message or not with N+1 rolling ap upgrade with Security dot1x	Passed	
EWLCJ1713S_Reg_357	Check 11v clients not getting client deauth message with N+1 rolling ap upgrade with Security dot1X	Verify 11v clients are not getting client deauth message with N+1 rolling ap upgrade with Security dot1x	Passed	
EWLCJ1713S_Reg_358	Check non 11v clients not getting client deauth message with N+1 rolling ap upgrade with Security dot1X	Verify non 11v clients are not getting client deauth message with N+1 rolling ap upgrade with Security dot1x	Passed	
EWLCJ1713S_Reg_359	Check 11v clients getting client deauth message with ISSU rolling ap upgrade	Verify 11v clients getting client deauth message or not with ISSU rolling ap upgrade with Security dot1x	Passed	
EWLCJ1713S_Reg_360	Check 11v clients not getting client deauth message with ISSU rolling ap upgrade	Verify 11v clients are not getting client deauth message with ISSU rolling ap upgrade with Security dot1x	Passed	

EWLCJ1713S_Reg_361	Check non 11v clients not getting client deauth message with ISSU rolling ap upgrade	Verify non 11v clients are not getting client deauth message with ISSU rolling ap upgrade with Security dot1x	Passed	
--------------------	--	---	--------	--

## Enhancements of Rogue detection (Include Channel Width)

Logical ID	Title	Description	Status	Defect ID
EWLCJ1713S_Reg_692	Check Whether able to configure rogue rule for 2.4 ghz	To check Whether able to configure rogue rule for 2.4 ghz	Passed	
EWLCJ1713S_Reg_693	Check Whether able to configure rogue rule for 5 ghz	To check whether able to configure rogue rule for 5ghz	Passed	
EWLCJ1713S_Reg_694	Check whether able to configure rogue rule for 6 ghz	To check whether able to configure rogue rule for 6 ghz	Passed	
EWLCJ1713S_Reg_695	Check above scenarios from GUI	To check above scenarios from GUI	Passed	
EWLCJ1713S_Reg_696	Check the list of AP's matched for rogue rule	To check the list of AP's matched for rogue rule	Failed	CSCwh18187
EWLCJ1713S_Reg_697	Check whether able to configure rogue AP manually	To check whether able to configure rogue AP manually	Passed	
EWLCJ1713S_Reg_698	Configure rogue ap Rule as friendly	To configure rogue ap Rule as friendly	Passed	
EWLCJ1713S_Reg_699	Configure rogue ap Rule as malicious	To configure rogue ap Rule as malicious	Failed	CSCwh70896
EWLCJ1713S_Reg_700	Configure rogue ap Rule as Unclassified	To configure rogue ap Rule as Unclassified	Passed	
EWLCJ1713S_Reg_701	Configure rogue ap Rule as Custom	To configure rogue ap Rule as Unclassified	Passed	
EWLCJ1713S_Reg_702	Connect windows client and check rogue client detection	To connect windows client and check rogue client detection	Passed	
EWLCJ1713S_Reg_703	Connect Android client and check rogue client detection	To connect Android client and check rogue client detection	Passed	



EWLCJ1713S_Reg_704	Check & compare client for different channel widths	To check & compare client for different channel widths	Passed	
EWLCJ1713S_Reg_705	Check & compare client for different bands	To check & compare client for different bands	Passed	

## Enhancements on AP Location

Logical ID	Title	Description	Status	Defect ID
EWLCJ1713S_Reg_561	Configure geolocation for AP	To validate geolocation details for ap showing or not	Passed	
EWLCJ1713S_Reg_562	Validate AP FTM Capability	To verify ap FTM details showing for ap or not	Passed	
EWLCJ1713S_Reg_563	Configure FTM Ranging for all APs	To verify FTM ranging enabled for all aps or not	Passed	
EWLCJ1713S_Reg_564	Configure Custom FTM Burst options	To verify FTM burst options configured as custom or not	Passed	
EWLCJ1713S_Reg_565	Check AP neighbours	To verify neighbour ap showing or not	Passed	
EWLCJ1713S_Reg_566	Trigger User initiated Ranging	To verify ranging details triggered or not for ap	Passed	
EWLCJ1713S_Reg_567	Trigger Air pressure data collection	To verify air pressure details triggered for ap or not	Passed	
EWLCJ1713S_Reg_568	Configure ap join profile for geolocation	To verify geolocation details in ap join profile	Passed	
EWLCJ1713S_Reg_569	Validate air pressure	To verify air pressure details in ap geolocation	Passed	
EWLCJ1713S_Reg_570	Configure LCI /Client location	To verify Client location showing or not	Passed	

## Enhancements to archive traces based on time range

Logical ID	Title	Description	Status	Defect ID
EWLCJ1713S_Reg_728	Configure WLAN with WPA Security and PSK Auth	Verify able to Config WLAN with WPA Security and PSK Auth	Passed	
EWLCJ1713S_Reg_729	Connect with an Android client with WPA - PSK configured WLAN	To collect trace logs connect & verify with an android client with WPA - PSK configured WLAN	Passed	
EWLCJ1713S_Reg_730	Connect with an IOS client with WPA - PSK configured WLAN	To collect trace logs connect & verify with an IOS client with WPA - PSK configured WLAN	Passed	
EWLCJ1713S_Reg_731	Connect with an windows client with WPA - PSK configured WLAN	To collect trace logs connect & verify with an windows client with WPA - PSK configured WLAN	Passed	
EWLCJ1713S_Reg_732	Connect with an MAC client with WPA - PSK configured WLAN	To collect trace logs connect & verify with an MAC client with WPA - PSK configured WLAN	Passed	
EWLCJ1713S_Reg_733	Connect with an Surface client with WPA - PSK configured WLAN	To collect trace logs connect & verify with an surface client with WPA - PSK configured WLAN	Passed	
EWLCJ1713S_Reg_734	Configure WLAN with WPA-2 security and PSK Auth	verify able to config WLAN with WPA-2 security and PSK Auth	Passed	
EWLCJ1713S_Reg_735	Connect with an android client with WPA2 - PSK configured WLAN	To collect trace logs connect & verify with an android client with WPA2 - PSK configured WLAN	Passed	

EWLCJ1713S_Reg_736	Connect with an IOS client with WPA2 - PSK configured WLAN	To collect trace logs connect & verify with an IOS client with WPA2 - PSK configured WLAN	Passed	
EWLCJ1713S_Reg_737	Connect with an windows client with WPA2 - PSK configured WLAN	To collect trace logs connect & verify with an windows client with WPA2 - PSK configured WLAN	Passed	
EWLCJ1713S_Reg_738	Connect with an MAC client with WPA2 - PSK configured WLAN	To collect trace logs connect & verify with an MAC client with WPA2 - PSK configured WLAN	Passed	
EWLCJ1713S_Reg_739	Connect with an Surface client with WPA2 - PSK configured WLAN	To collect trace logs connect & verify with an surface client with WPA2 - PSK configured WLAN	Passed	
EWLCJ1713S_Reg_740	Configuring WLAN with WPA3-Dot1x security	verify able to config WLAN with WPA3-Dot1x security	Passed	
EWLCJ1713S_Reg_741	Connect with an android client with WPA3 - Dot1x configured WLAN	To collect trace logs connect & verify with an android client with WPA3 - Dot1x configured WLAN	Passed	
EWLCJ1713S_Reg_742	Connect with an IOS client with WPA3 - Dot1x configured WLAN	To collect trace logs connect & verify with an IOS client with WPA3 - Dot1x configured WLAN	Passed	
EWLCJ1713S_Reg_743	Connect with an windows client with WPA3 - Dot1x configured WLAN	To collect trace logs connect & verify with an windows client with WPA3 - Dot1x configured WLAN	Passed	

EWLCJ1713S_Reg_744	Connect with an MAC client with WPA3 - Dot1x configured WLAN	To collect trace logs connect & verify with an MAC client with WPA3 - Dot1x configured WLAN	Passed	
EWLCJ1713S_Reg_745	Connect with an Surface client with WPA3 - Dot1x configured WLAN	To collect trace logs connect & verify with an surface client with WPA3 - Dot1x configured WLAN	Passed	
EWLCJ1713S_Reg_746	Configuring WLAN with WPA3-SAE security	verify able to config WLAN with WPA3- SAE security	Passed	
EWLCJ1713S_Reg_747	Connect with an android client with WPA3 - SAE security	To collect trace logs connect & verify with an android client with WPA3 - SAE security	Passed	
EWLCJ1713S_Reg_748	Connect with an IOS client with WPA3 - SAE security	To collect trace logs connect & verify with an IOS client with WPA3 - SAE security	Passed	
EWLCJ1713S_Reg_749	Connect with an windows client with WPA3 - SAE security	To collect trace logs connect & verify with an windows client with WPA3 - SAE security	Passed	
EWLCJ1713S_Reg_750	Connect with an MAC client with WPA3 - SAE security	To collect trace logs connect & verify with an MAC client with WPA3 - SAE security	Passed	
EWLCJ1713S_Reg_751	Connect with an Surface client with WPA3 - SAE security	To collect trace logs connect & verify with an surface client with WPA3 - SAE security	Passed	
EWLCJ1713S_Reg_752	Configuring WLAN with WPA3- SAE security with radio band 2.4/5 ghz & enable 11ax	verify able to config WLAN with WPA3- SAE security with radio band 2.4/5ghz & enable 11ax.	Passed	

EWLCJ1713S_Reg_753	Connect with an android client with WPA3 - SAE security & radio band 2.4/5 ghz & enable 11ax	To collect trace logs connect & verify with an android client with WPA3 - SAE security & with radio band 2.4/5 ghz & enable 11ax	Passed	
EWLCJ1713S_Reg_754	Connect with an IOS client with WPA3 - SAE security with radio band 2.4/5 ghz & enable 11ax	To collect trace logs connect & verify with an IOS client with WPA3 - SAE security with radio band 2.4/5 ghz & enable 11ax	Passed	
EWLCJ1713S_Reg_755	Connect with an windows client with WPA3 - SAE security with radio band 2.4/5 ghz & enable 11ax	To collect trace logs connect & verify with an windows client with WPA3 - SAE security with radio band 2.4/5 ghz & enable 11ax	Passed	
EWLCJ1713S_Reg_756	Connect with an MAC client with WPA3 - SAE security with radio band 2.4/5 ghz & enable 11ax	To collect trace logs connect & verify with an MAC client with WPA3 - SAE security with radio band 2.4/5 ghz & enable 11ax	Passed	
EWLCJ1713S_Reg_757	Connect with an Surface client with WPA3 - SAE security with radio band 2.4/5 ghz & enable 11ax	To collect trace logs connect & verify with an surface client with WPA3 - SAE security with radio band 2.4/5 ghz & enable 11ax	Passed	
EWLCJ1713S_Reg_758	Configuring WLAN with WPA3- SAE security with radio band 2.4/5 ghz & enable 11ac	verify able to config WLAN with WPA3- SAE security with radio band 2.4/5ghz & enable 11ac.	Passed	

EWLCJ1713S_Reg_759	Connect with an android client with WPA3 - SAE security & radio band 2.4/5 ghz & enable 11ac	To collect trace logs connect & verify with an android client with WPA3 - SAE security & with radio band 2.4/5 ghz & enable 11ac	Passed	
EWLCJ1713S_Reg_760	Connect with an IOS client with WPA3 - SAE security with radio band 2.4/5 ghz & enable 11ac	To collect trace logs connect & verify with an IOS client with WPA3 - SAE security with radio band 2.4/5 ghz & enable 11ac	Passed	
EWLCJ1713S_Reg_761	Connect with an windows client with WPA3 - SAE security with radio band 2.4/5 ghz & enable 11ac	To collect trace logs connect & verify with an windows client with WPA3 - SAE security with radio band 2.4/5 ghz & enable 11ac	Passed	
EWLCJ1713S_Reg_762	Connect with an MAC client with WPA3 - SAE security with radio band 2.4/5 ghz & enable 11ac	To collect trace logs connect & verify with an MAC client with WPA3 - SAE security with radio band 2.4/5 ghz & enable 11ac	Passed	
EWLCJ1713S_Reg_763	Connect with an Surface client with WPA3 - SAE security with radio band 2.4/5 ghz & enable 11ac	To collect trace logs connect & verify with an surface client with WPA3 - SAE security with radio band 2.4/5 ghz & enable 11ac	Passed	
EWLCJ1713S_Reg_764	Configuring WLAN with WPA3- SAE security with radio band 2.4/2.4 /5 ghz & enable 11n	verify able to config WLAN with WPA3- SAE security with radio band 2.4/5ghz & enable 11ac.	Passed	

EWLCJ1713S_Reg_765	Connect with an android client with WPA3 - SAE security & radio band 2.4/5 ghz & enable 11n	To collect trace logs connect & verify with an android client with WPA3 - SAE security & with radio band 2.4/5 ghz & enable 11n	Passed	
EWLCJ1713S_Reg_766	Connect with an IOS client with WPA3 - SAE security with radio band 2.4/5 ghz & enable 11n	To collect trace logs connect & verify with an IOS client with WPA3 - SAE security with radio band 2.4/5 ghz & enable 11n	Passed	
EWLCJ1713S_Reg_767	Connect with an windows client with WPA3 - SAE security with radio band 2.4/5 ghz & enable 11n	To collect trace logs connect & verify with an windows client with WPA3 - SAE security with radio band 2.4/5 ghz & enable 11n	Passed	
EWLCJ1713S_Reg_768	Connect with an MAC client with WPA3 - SAE security with radio band 2.4/5 ghz & enable 11n	To collect trace logs connect & verify with an MAC client with WPA3 - SAE security with radio band 2.4/5 ghz & enable 11n	Passed	
EWLCJ1713S_Reg_769	Connect with an Surface client with WPA3 - SAE security with radio band 2.4/5 ghz & enable 11n	To collect trace logs connect & verify with an surface client with WPA3 - SAE security with radio band 2.4/5 ghz & enable 11n	Passed	



## EWC support for WiFi6 AP's

Logical ID	Title	Description	Status	Defect ID
EWLCJ1713S_Reg_307	Make 9120 ap as ewc with 17.11 image	To verify 9120 ap converted as ewc	Passed	CSCwh01124
EWLCJ1713S_Reg_308	Make 9130 ap as ewc with 17.11 image	To verify 9130 ap converted as ewc	Passed	
EWLCJ1713S_Reg_309	Make 9105 ap as ewc with 17.11 image	To verify 9105 ap converted as ewc	Passed	
EWLCJ1713S_Reg_310	Make 9115 ap as ewc with 17.11 image	To verify 9115 ap converted as ewc	Passed	
EWLCJ1713S_Reg_311	Create wlan and verify client connectivity.	To verify client associate with created wlan	Failed	CSCwh83883
EWLCJ1713S_Reg_312	Connecting a Window client and verify details	To connect a window client to the AP and check if the client gets connected to the EWC without any errors.	Passed	
EWLCJ1713S_Reg_313	Connecting a Android client and verify details	To connect a Android client to the AP and check if the client gets connected to the EWC without any errors.	Passed	CSCwh29070
EWLCJ1713S_Reg_314	Connecting a IOS client and verify details	To connect a IOS client to the AP and check if the client gets connected to the EWC without any errors.	Passed	
EWLCJ1713S_Reg_315	Connecting a MAC client and verify details	To connect a MAC client to the AP and check if the client gets connected to the EWC without any errors.	Passed	

EWLCJ1713S_Reg_316	Checking if the client do not connect to the AP after rebooting and joining the primary controller	To check if the client gets connected to the AP after rebooting the AP and AP joining the primary controller .where there is no same WLAN	Passed	
EWLCJ1713S_Reg_317	Performing Intra controller roaming of Android client	To check whether intra controller roaming of Android clients works properly or not	Passed	
EWLCJ1713S_Reg_318	Performing Intra controller roaming of IOS client	To check whether intra controller roaming of IOS clients works properly or not in eWLC	Passed	
EWLCJ1713S_Reg_319	Performing Intra controller roaming of Mac OS client	To check whether intra controller roaming of MacOS clients works properly or not	Passed	
EWLCJ1713S_Reg_320	Performing Inter controller roaming of Windows OS client	To check whether inter controller roaming of windows clients works properly or not	Passed	
EWLCJ1713S_Reg_321	Performing Inter controller roaming of Android client	To check whether inter controller roaming of Android clients works properly or not	Passed	
EWLCJ1713S_Reg_322	Performing Inter controller roaming of IOS client	To check whether inter controller roaming of IOS clients works properly or not	Passed	
EWLCJ1713S_Reg_323	Performing Inter controller roaming of Mac OS client	To check whether inter controller roaming of Mac OS clients works properly or not	Passed	

# HA SSO RMI

Logical ID	Title	Description	Status	Defect ID
EWLCJ1713S_Reg_87	Configure HA setup using RP option.	To configure HA setup using RP option.	Passed	
EWLCJ1713S_Reg_88	Validate the HA setup parameters.	To validate the HA setup parameters.	Passed	
EWLCJ1713S_Reg_89	Unpairing HA setup using no RP-Method	To unpair the HA setup using no RP-Method	Passed	
EWLCJ1713S_Reg_90	Configure HA SSO RMI	To Configure HA SSO RMI	Passed	
EWLCJ1713S_Reg_91	Validate the HA RMI parameters.	To validate the HA RMI parameters.	Passed	
EWLCJ1713S_Reg_92	Update RMI configuration in eWLC UI and check the output	To update RMI configuration in eWLC UI and check the output	Passed	
EWLCJ1713S_Reg_93	Enable gateway failover, verify output details and monitor devices for switchover.	To enable gateway failover, verify output details & monitor devices for switchover.	Passed	
EWLCJ1713S_Reg_94	Force-switchover to verify HA SSO RMI behaviour.	To verify HA SSO RMI behaviour on force-switchover.	Passed	
EWLCJ1713S_Reg_95	Enabling the RP method with RMI enabled already.	To enable the RP method with RMI option enabled already.	Passed	
EWLCJ1713S_Reg_96	ISSU upgrade with HA SSO RMI	To perform ISSU upgrade in HA SSO RMI setup and monitor behaviour	Passed	
EWLCJ1713S_Reg_97	Check ISSU downgrade with HA SSO RMI	To perform ISSU upgrade in HA SSO RMI setup and monitor behaviour	Passed	
EWLCJ1713S_Reg_98	Client retention during ISSU upgrade/downgrade	To verify client retention after ISSU upgrade/downgrade.	Passed	

EWLCJ1713S_Reg_99	Force multiple switchover after upgrade to check if RMI link is up or not	To force multiple switchover after upgrade to check if RMI link is up or not	Passed	
EWLCJ1713S_Reg_100	Force multiple switchover and verify AP & client association	To force multiple switchover and verify AP & client association	Passed	
EWLCJ1713S_Reg_101	Validate licensing information after ISSU upgrade/downgrade	To validate licensing information after ISSU upgrade/downgrade	Passed	
EWLCJ1713S_Reg_102	Validate licensing information after multiple switchover and reload	To validate licensing information after multiple switchover and reload	Passed	
EWLCJ1713S_Reg_103	Clear RMI based configuration from UI	To clear RMI based configuration from UI	Passed	
EWLCJ1713S_Reg_104	Clear RMI based configuration from CLI	To clear RMI based configuration from CLI	Passed	
EWLCJ1713S_Reg_105	Configure HA SSO RMI after RP-clear & validate HA RMI parameters.	To configure HA SSO RMI after RP-clear & validate HA RMI parameters.	Passed	
EWLCJ1713S_Reg_106	Verify HA setup details from Standby console	To verify HA setup details in Standby console	Passed	
EWLCJ1713S_Reg_107	Check interfaces state from standby console	To check interfaces state from standby console	Passed	
EWLCJ1713S_Reg_108	Check environment details from standby console	To monitor environment details from standby console	Passed	
EWLCJ1713S_Reg_109	Check process usage details in standby console	To check process usage details in standby console	Passed	

EWLCJ1713S_Reg_110	Monitor running process in Standby unit from Active unit console	To monitor running process in Standby unit from Active unit console	Passed	
EWLCJ1713S_Reg_111	SSH to standby console directly and check connectivity	To SSH to standby console directly and check connectivity	Passed	

## iCAP Hardening [Device Dependency]

Logical ID	Title	Description	Status	Defect ID
EWLCJ1713S_Reg_770	Check for Anomaly detection enhancement commands in eWLC cli	To Check Whether the Anomaly detection enhancement command are available or not in eWLC controller	Passed	
EWLCJ1713S_Reg_771	Check for show command to check Anomaly detection enhancement in eWLC and ap console	To Check and verify the default values on the enhanced fields of Anomaly detection with help of show command in eWLC and ap console	Passed	
EWLCJ1713S_Reg_772	Check for show command to check RF-Stats enhancement in eWLC	To Check and verify the RF-Stats enhanced fields with help of show command in eWLC	Passed	
EWLCJ1713S_Reg_773	Configure a per-type anomaly detection	To Check Whether the per-type anomaly detection can be configured or not	Passed	
EWLCJ1713S_Reg_774	Check the per-type anomaly detection changes	To check and verify the configured per-type anomaly detection	Passed	
EWLCJ1713S_Reg_775	Configure a per-client anomaly detection	To Check Whether the per-client anomaly detection can be configured or not	Passed	
EWLCJ1713S_Reg_776	Check the per-client anomaly detection changes	To check and verify the configured per-client anomaly detection	Passed	
EWLCJ1713S_Reg_777	check and verify anomaly detection with aggregate	To check and verify anomaly detection is created with aggregate or not	Passed	

EWLCJ1713S_Reg_778	Enable Anomaly detection with both per-type and per client and verify in AP Console	To enable Anomaly detection with both per-type and per client and verify in AP Console	Passed	
EWLCJ1713S_Reg_779	Enable Anomaly detection with both per-type and per client and verify in eWLC	To enable Anomaly detection with both per-type and per client and verify in eWLC	Passed	
EWLCJ1713S_Reg_780	Check the single AP anomaly detection with per-type and per-client config	To Check and verify the single AP anomaly detection with per-type and per-client config	Passed	
EWLCJ1713S_Reg_781	check and verify per-type anomaly detection with client connectivity	To enable anomaly detection with per-type throttling and connect a client to the AP and verify the show command for client related details	Passed	
EWLCJ1713S_Reg_782	check and verify per-client anomaly detection with client connectivity	To enable anomaly detection with per-client throttling and connect a client to the AP and verify the show command for client related details	Passed	
EWLCJ1713S_Reg_783	check and verify per-client anomaly detection with more than 2 client connectivity	To enable anomaly detection with per-client throttling and connect 2 or more client to the AP and verify the show command for client related details	Passed	

## Intelligent AP auditing on WLC

Logical ID	Title	Description	Status	Defect ID
EWLCJ1713S_Reg_223	Configure Radio monitoring	Verify the radio monitoring parameter configured or not	Passed	
EWLCJ1713S_Reg_224	Configure AP monitoring	Verify the Ap monitoring parameter configured or not	Passed	
EWLCJ1713S_Reg_225	Configure high CPU utilization	To Verify reload happen or not for high CPU utilization	Passed	
EWLCJ1713S_Reg_226	Configure high memory utilization	To Verify reload happen or not for high memory utilization	Passed	
EWLCJ1713S_Reg_227	Validate the AP disconnect reason code for high memory	Check the AP disconnect reason code if AP is showing high memory.	Passed	
EWLCJ1713S_Reg_228	Validate the AP disconnect reason code for high CPU.	Check the AP disconnect reason code if AP is showing high CPU.	Passed	
EWLCJ1713S_Reg_229	show commands stats for AP action	Verify if AP show stats commands of AP high CPU/memory and radio stuck are incrementing on each action	Passed	
EWLCJ1713S_Reg_230	Configure different sampling periods.	Configure different sampling periods for AP CPU and high memory and verify if computation works fine.	Passed	



EWLCJ1713S_Reg_231	Configure different threshold time	Configure different threshold values for AP CPU and high memory and verify if computation works fine.	Passed	
EWLCJ1713S_Reg_232	NETCONF config data	Configure all AP system and radio monitoring via NETCONF	Passed	
EWLCJ1713S_Reg_233	NETCONF notification	Verify that NETCONF notification is getting generated for AP high CPU, high memory disconnect reason and radio reset due to radio stuck.	Passed	
EWLCJ1713S_Reg_234	Pre-download/upgrade case	No AP reload action should be taken when AP is doing pre-download or upgrade of the image	Passed	
EWLCJ1713S_Reg_235	Validate AP action for max value configure in sampling period	Configure Max Sampling values for AP CPU and high memory and verify if computation works fine	Passed	
EWLCJ1713S_Reg_236	Validate AP action for max value configure in threshold time	Configure Max threshold time for AP CPU and high memory and verify if computation works fine	Passed	
EWLCJ1713S_Reg_237	Validate the CPU and memory details in DNAC	Verify the radio , AP monitoring parameter details showing or not in DANC	Passed	
EWLCJ1713S_Reg_238	Verify the client association during ap reload	Verify client connected or not after ap reload	Passed	

EWLCJ1713S_Reg_239	Configure high CPU & memory for continuous ap reload action	Verify any crash happen or not during continuous reload ap action	Passed	
--------------------	---	---	--------	--

## Intelligent Capture OTA Sniffer Device Work

Logical ID	Title	Description	Status	Defect ID
EWLCJ1713S_Reg_378	Configure Sniffer for 5Ghz or 2.4Ghz band radios	To configure Sniffer for 5Ghz or 2.4Ghz band radios	Passed	
EWLCJ1713S_Reg_379	Configure Sniffer for 5Ghz or 2.4Ghz radios through CLI	To configure Sniffer for 5Ghz or 2.4Ghz radios through CLI	Passed	
EWLCJ1713S_Reg_380	Change mode from local to flex and capture network activity	To capture network activity when AP mode changed from local to flex	Passed	
EWLCJ1713S_Reg_381	Change mode from flex to local and capture network activity	To capture network activity when AP mode changed from flex to local	Passed	
EWLCJ1713S_Reg_382	Check whether alert is triggered or not when AP mode changed to Sniffer	To check whether alert is triggered or not when AP mode changed to Sniffer	Passed	
EWLCJ1713S_Reg_383	Check commands whether packets are captured in ap side or not	To check commands whether packets are captured in ap side or not	Passed	
EWLCJ1713S_Reg_384	Verify CLIs existing functionality to start sniff	To verify CLIs existing functionality to start sniff	Passed	
EWLCJ1713S_Reg_385	Enable/Disable sniffer subscription When AP radio role is not sniffer	To verify sniffer subscription enable/disable on AP when AP radio role is not in sniffer mode (2.4,5 and 6 ghz)	Passed	
EWLCJ1713S_Reg_386	Enable/Disable sniffer subscription When AP Mode is sniffer	To verify sniffer subscription enable/disable on AP when AP radio role is in sniffer mode (2.4,5 and 6 ghz)	Passed	

EWLCJ1713S_Reg_387	Verify sniffer subscription when AP associate and dis-associate a controller (AP association /disassociation)	To verify sniffer subscription when a AP associate and dis-associate a controller	Passed	
EWLCJ1713S_Reg_388	Verify radio role "sniffer" for 2.4ghz	To verify AP 2.4ghz radio role as sniffer	Passed	
EWLCJ1713S_Reg_389	Verify radio role "sniffer" for 5ghz	To verify AP 5ghz radio role as sniffer	Passed	
EWLCJ1713S_Reg_390	Verify radio role "sniffer" for 6ghz	To verify AP 6ghz radio role as sniffer	Passed	
EWLCJ1713S_Reg_391	Verify AP mode sniffer with 2.4ghz	Change ap mode to sniffer and verify ratio tap fields for 2.4ghz	Passed	
EWLCJ1713S_Reg_392	Verify AP mode sniffer with 5ghz	Change ap mode to sniffer and verify ratio tap fields for 5ghz	Passed	
EWLCJ1713S_Reg_393	Verify AP mode sniffer with 6ghz	Change ap mode to sniffer and verify ratio tap fields for 6ghz	Passed	
EWLCJ1713S_Reg_394	verify sniffer subscription with truncation for ap radio role in 2.4ghz	To verify sniffer subscription with truncation for ap radio role in 2.4ghz	Passed	
EWLCJ1713S_Reg_395	verify sniffer subscription with truncation for ap radio role in 5ghz	To verify sniffer subscription with truncation for ap radio role in 5ghz	Passed	
EWLCJ1713S_Reg_396	verify sniffer subscription with truncation for ap radio role in 6ghz	To verify sniffer subscription with truncation for ap radio role in 6ghz	Passed	
EWLCJ1713S_Reg_397	Verify sniffer subscription with truncation for ap sniffer mode for 2.4ghz	To verify sniffer subscription with truncation for ap sniffer mode for 2.4ghz	Passed	

EWLCJ1713S_Reg_398	Verify sniffer subscription with truncation for ap sniffer mode for 5ghz	To verify sniffer subscription with truncation for ap sniffer mode for 5ghz	Passed	
EWLCJ1713S_Reg_399	Verify sniffer subscription with truncation for ap sniffer mode for 6ghz	To verify sniffer subscription with truncation for ap sniffer mode for 6ghz	Passed	
EWLCJ1713S_Reg_400	Verify sniffer AP Model 9130	To verify sniffer AP Model 9130	Passed	
EWLCJ1713S_Reg_401	Verify sniffer AP Model 9120	To verify sniffer AP Model 9120	Passed	
EWLCJ1713S_Reg_402	Verify icap sniffer truncation with minimum bytes configured	To verify icap sniffer truncation with minimum bytes configured	Passed	
EWLCJ1713S_Reg_403	Verify icap sniffer truncation with maximum bytes configured	To verify icap sniffer truncation with maximum bytes configured	Passed	
EWLCJ1713S_Reg_404	Verify icap sniffer truncation with all bytes configured	To verify icap sniffer truncation with all bytes configured	Passed	
EWLCJ1713S_Reg_405	Verify sniffer subscription config after ap reload/reboot	To verify sniffer subscription config after ap reload/reboot	Passed	
EWLCJ1713S_Reg_406	Verify CPU and memory usage	To validate CPU/memory usage	Passed	
EWLCJ1713S_Reg_407	Verify any memory leakage on ap	To verify any memory leakage on ap	Passed	

## Intelligently disable 24GHz radios

Logical ID	Title	Description	Status	Defect ID
EWLCJ1713S_Reg_324	Check the config CLI syntax “fra action monitor”	To verify whether syntax should be proper or not and without any issues	Passed	
EWLCJ1713S_Reg_325	Check the config CLI syntax “no fra action monitor”	To verify whether syntax should be proper or not and without any issues	Passed	
EWLCJ1713S_Reg_326	Check the config CLI syntax “fra action monitor” show command	To check the “show ap fra” displays about the FRA action or not	Passed	
EWLCJ1713S_Reg_327	Execute the CLI functionality “no fra action monitor”	To check the “show ap fra” show display about the FRA action as default or not	Passed	
EWLCJ1713S_Reg_328	Configure 5/6ghz FRA details through UI dashboard	To verify 5/6ghz FRA details configured through UI dashboard	Passed	
EWLCJ1713S_Reg_329	Configure 2.4/5ghz FRA details through UI dashboard	To verify 2.4/5ghz FRA details configured through UI dashboard	Passed	
EWLCJ1713S_Reg_330	Configure FRA action in named RF profile	To configure FRA action in named RF profile	Passed	
EWLCJ1713S_Reg_331	Configure the FRA action and check the config sync on Standby	To check whether FRA action details sync up with standby config or not	Passed	
EWLCJ1713S_Reg_332	Configure FRA action and reboot the controller and check the config	To check whether configuration retained or not after the reboot	Passed	
EWLCJ1713S_Reg_333	Check the show running config after configuring the FRA action	To check the show running config after configuring the FRA action	Passed	

EWLCJ1713S_Reg_334	Check show tech support after configuring the FRA action	Show tech support should have the FRA action config in RF profile configuration	Passed	
EWLCJ1713S_Reg_335	The FRA config option shouldn't be there in 5GHz and 6GHz RF profile configuration	To check the FRA config option shouldn't be there in 5GHz and 6GHz RF profile configuration	Passed	
EWLCJ1713S_Reg_336	Enable the FRA action monitor and have more than 4 dual band AP's in the controller and check the dual band radios moved to monitor role	To check the dual band XOR radios move to only monitor role when FRA action is enabled as monitor	Passed	
EWLCJ1713S_Reg_337	Disable the FRA action as monitor and check the XOR dual band radios move from Monitor back to 2.4ghz client serving mode	Dual band radios which are moved to monitor due to COF needs to be changed to client serving 2.4Ghz after disabling the FRA action	Passed	
EWLCJ1713S_Reg_338	Enable the FRA action as monitor and enable FRA freeze and we shouldn't move any dual band radios to Monitor	It shouldn't move dual band radios when FRA freeze is enabled	Passed	
EWLCJ1713S_Reg_339	Disable the FRA freeze and check the Dual band radios should move to monitor after couple of FRA cycles	After disabling the FRA freeze after of couple of FRA cycles dual band radios should move to Monitor	Passed	
EWLCJ1713S_Reg_340	Disable the global FRA and check radios which are moved to Monitor due to FRA needs to be moved back to 2.4GHz client serving	Disable the global FRA and check radios should move back 2.4GHz client serving	Passed	

EWLCJ1713S_Reg_341	Verify Configuration and runtime information	To verify Configuration and runtime information	Passed	
EWLCJ1713S_Reg_342	Checking RRM Threshold values VS RF profile	To verify RF profile effecting RRM Threshold values or not	Passed	
EWLCJ1713S_Reg_343	Check RRM Threshold values for 2.4ghz/5ghz/6ghz	To verify RRM values for all 3 bands effecting RF profile or not	Passed	
EWLCJ1713S_Reg_344	Check with Fixed Channel for 2.4Ghz in RRM	To verify client connectivity for particular channel	Passed	
EWLCJ1713S_Reg_345	Check with Fixed channels for 5Ghz in RRM	To verify client connectivity for particular channel	Passed	
EWLCJ1713S_Reg_346	Check with multiple clients for above 2 scenarios	To verify multiple client's channel when channel is fixed	Passed	
EWLCJ1713S_Reg_347	Check TPC power level for 2.4Ghz and 5 Ghz	To verify TPC power level with in the given range or not	Passed	



## Interferer recording [CleanAir Pro]

Logical ID	Title	Description	Status	Defect ID
EWLCJ1713S_Reg_667	Start the spectral capture by entering ap name in GUI	To check and start the spectral capture of AP name entered manually	Passed	
EWLCJ1713S_Reg_668	Start the spectral capture by CleanAir Pro Capable AP List in GUI	To check and start the spectral capture entered from CleanAir Pro Capable AP List	Passed	
EWLCJ1713S_Reg_669	Start the spectral capture for AP through CLI	To check and start the spectral capture for AP through CLI	Passed	
EWLCJ1713S_Reg_670	Stop the Spectral capture AP through CLI	To Perform and check Stop the Spectral capture through CLI	Passed	
EWLCJ1713S_Reg_671	Abort the Spectral Capture through CLI	To Perform and check Abort the Spectral Capture through CLI	Passed	
EWLCJ1713S_Reg_672	Stop the Spectral capture in GUI	To Perform and check Stop the Spectral capture in GUI	Passed	
EWLCJ1713S_Reg_673	Abort the Spectral Capture in GUI	To Perform and check Abort the Spectral Capture in GUI	Passed	
EWLCJ1713S_Reg_674	spectral capture for AP 2.4Ghz band through CLI	To Perform spectral capture for AP 2.4Ghz band through CLI	Passed	
EWLCJ1713S_Reg_675	spectral capture for AP 6 Ghz band through CLI	To Perform spectral capture for AP 6 Ghz band through CLI	Passed	
EWLCJ1713S_Reg_676	spectral capture for AP 5 Ghz band through CLI	To Perform spectral capture for AP 5 Ghz band through CLI	Passed	

EWLCJ1713S_Reg_677	spectral capture for AP 2.4Ghz band through GUI	To Perform spectral capture for AP 2.4Ghz band through GUI	Passed	
EWLCJ1713S_Reg_678	spectral capture for AP 6 Ghz band through GUI	To Perform spectral capture for AP 6 Ghz band through GUI	Passed	
EWLCJ1713S_Reg_679	spectral capture for AP 5 Ghz band through GUI	To Check spectral capture for AP 5 Ghz band through GUI	Passed	
EWLCJ1713S_Reg_680	Spectral capture for Ap by All Capture option in GUI	To check and get Spectral capture for Ap for by All Capture option in GUI	Passed	
EWLCJ1713S_Reg_681	Spectral capture for AP by device type in GUI	To check and get Spectral capture for AP by device type in GUI	Passed	
EWLCJ1713S_Reg_682	Spectral capture for AP by Frequency type in GUI	To check and get Spectral capture for AP by Frequency type in GUI	Passed	
EWLCJ1713S_Reg_683	Spectral capture for AP by Severity type in GUI	To check and get Spectral capture for AP by Severity type in GUI	Passed	
EWLCJ1713S_Reg_684	Number of frames for spectral capture through GUI	To check number of frames is given in range for spectral capture through GUI	Passed	
EWLCJ1713S_Reg_685	Number of frames for spectral capture through CLI	To check the number of frames for spectral capture through CLI	Passed	
EWLCJ1713S_Reg_686	Frequency for spectral capture through GUI	To check Frequency for spectral capture through GUI	Passed	
EWLCJ1713S_Reg_687	Capturing Specific channel for radio bands through GUI	To check Capturing Specific channel for radio bands through GUI	Passed	

EWLCJ1713S_Reg_688	Frequency for spectral capture through CLI	To check Frequency for spectral capture through CLI	Passed	
EWLCJ1713S_Reg_689	Capturing Specific channel for radio bands through CLI	To check Capturing Specific channel for radio bands through CLI	Passed	
EWLCJ1713S_Reg_690	Download the spectral capture recording for 9166 AP	To check and download the spectral capture recording for 9166 AP	Passed	
EWLCJ1713S_Reg_691	Download the spectral capture recording for 9164 AP	To check and download the spectral capture recording for 9164 AP	Passed	

## IP Theft on 9800 WLC [Central Mode of operation]

Logical ID	Title	Description	Status	Defect ID
EWLCJ1713S_Reg_441	MAC binding with 2 same SSID's for different VLAN with same IP for Local mode 9105 AP and 9166 AP	To Check MAC binding with EWLC having 2 same SSIDs for different VLAN with same IP for local mode 9105 AP and 9166 AP and check if happens Excluded list for 2nd SSID	Passed	
EWLCJ1713S_Reg_442	MAC binding having 2 same SSID's for different VLAN with same IP for Local mode 9120 AP and 9130 AP	To Check MAC binding with EWLC having 2 same SSIDs for different VLAN with same IP for local mode 9120 AP and 9130 AP and check if happens Excluded list for 2nd SSID	Passed	
EWLCJ1713S_Reg_443	MAC binding having 2 same SSID's for different VLAN with same IP for Local mode 9124 AP and 9164 AP	To Check MAC binding with EWLC having 2 same SSIDs for different VLAN with same IP for local mode 9124 AP and 9164 AP and check if happens Excluded list for 2nd SSID	Passed	
EWLCJ1713S_Reg_444	MAC binding with 2 same SSID's for different VLAN with same IP for flex mode 9105 AP and 9166 AP	To Check MAC binding with EWLC having 2 same SSIDs for different VLAN with same IP for flex mode 9105 AP and 9166 AP and check if happens Excluded list for 2nd SSID	Passed	

EWLCJ1713S_Reg_445	MAC binding having 2 same SSID's for different VLAN with same IP for flex mode 9120 AP and 9130 AP	To Check MAC binding with EWLC having 2 same SSIDs for different VLAN with same IP for flex mode 9120 AP and 9130 AP and check if happens Excluded list for 2nd SSID	Passed	
EWLCJ1713S_Reg_446	MAC binding having 2 same SSID's for different VLAN with same IP for flex mode 9124 AP and 9164 AP	To Check MAC binding with EWLC having 2 same SSIDs for different VLAN with same IP for flex mode 9124 AP and 9164 AP and check if happens Excluded list for 2nd SSID	Passed	
EWLCJ1713S_Reg_447	MAC binding with 2 different SSID's for different VLAN with same IP for flex mode 9105 AP and 9166 AP	To Check MAC binding with EWLC having 2 different SSIDs for different VLAN with same IP for flex mode 9105 AP and 9166 AP and check if happens Excluded list for 2nd SSID	Passed	CSCwh16857
EWLCJ1713S_Reg_448	MAC binding with 2 different SSID's for different VLAN with same IP for flex mode 9120 AP and 9130 AP	To Check MAC binding with EWLC having 2 different SSIDs for different VLAN with same IP for flex mode 9120 AP and 9130 AP and check if happens Excluded list for 2nd SSID	Passed	

EWLCJ1713S_Reg_449	MAC binding with 2 different SSID's for different VLAN with same IP for flex mode 9124 AP and 9164 AP	To Check MAC binding with EWLC having 2 different SSIDs for different VLAN with same IP for flex mode 9124 AP and 9164 AP and check if happens Excluded list for 2nd SSID	Passed	
EWLCJ1713S_Reg_450	MAC binding with 2 different SSID's for different VLAN with same IP for Local mode 9105 AP and 9166 AP	To Check MAC binding with EWLC having 2 different SSIDs for different VLAN with same IP for local mode 9105 AP and 9166 AP and check if happens Excluded list for 2nd SSID	Passed	
EWLCJ1713S_Reg_451	MAC binding with 2 different SSID's for different VLAN with same IP for Local mode 9120 AP and 9130 AP	To Check MAC binding with EWLC having 2 different SSIDs for different VLAN with same IP for local mode 9120 AP and 9130 AP and check if happens Excluded list for 2nd SSID	Passed	
EWLCJ1713S_Reg_452	MAC binding with 2 different SSID's for different VLAN with same IP for Local mode 9124 AP and 9164 AP	To Check MAC binding with EWLC having 2 different SSIDs for different VLAN with same IP for local mode 9124 AP and 9164 AP and check if happens Excluded list for 2nd SSID	Passed	
EWLCJ1713S_Reg_453	Exclusion list-802.1x security for EWLC with 2 different SSID's for different VLAN with same IP and Perform Mac binding	To Check MAC binding with EWLC with 802.1x having 2 different SSIDs for different VLAN with same IP and check if happens Excluded list for 2nd SSID	Passed	

EWLCJ1713S_Reg_454	Exclusion list- PSK security for EWLC with 2 different SSID's for different VLAN with same IP and Perform Mac binding	To Check MAC binding with EWLC with PSK Security having 2 different SSIDs for different VLAN with same IP and check if happens Excluded list for 2nd SSID	Passed	
EWLCJ1713S_Reg_455	Exclusion list- 802.1x security for EWLC with 2 same SSID's for different VLAN with same IP and Perform Mac binding	To Check MAC binding with EWLC with 802.1x having 2 same SSIDs for different VLAN with same IP and check if happens Excluded list for 2nd SSID	Passed	
EWLCJ1713S_Reg_456	Exclusion list- PSK security for EWLC with 2 same SSID's for different VLAN with same IP and Perform Mac binding	To Check MAC binding with EWLC with PSK Security having 2 same SSIDs for different VLAN with same IP and check if happens Excluded list for 2nd SSID	Passed	
EWLCJ1713S_Reg_457	Perform MAC binding through CLI for different vlan with same IP address	To check if mac binding is enabled through CLI	Passed	
EWLCJ1713S_Reg_458	MAC binding having 2 same SSID's for same VLAN with same IP for Local mode	To Check MAC binding with EWLC having 2 same SSIDs for same VLAN with same IP for local mode and check if happens Excluded list for 2nd SSID	Failed	CSCwh27794

EWLCJ1713S_Reg_459	MAC binding having 2 same SSID's for same VLAN with same IP for flex mode	To Check MAC binding with EWLC having 2 same SSIDs for same VLAN with same IP for flex mode and check if happens Excluded list for 2nd SSID	Passed	
--------------------	---	---	--------	--



## KPIs for AP Health via WLC and AP

Logical ID	Title	Description	Status	Defect ID
EWLCJ1713S_Reg_616	Check Radio reset codes upon eWLC version 17.12.x	To Check Radio reset codes upon eWLC version 17.12.x	Passed	
EWLCJ1713S_Reg_617	Check Radio reset codes upon eWLC version 17.11.x or below	To Check Radio reset codes upon eWLC version 17.11.x	Passed	
EWLCJ1713S_Reg_618	Join AP to eWLC with improper tag config	To Join AP to eWLC with improper tag config	Passed	
EWLCJ1713S_Reg_619	Change AP mode Local to Flex	To check when AP mode changes from Local to Flex mode	Passed	
EWLCJ1713S_Reg_620	Change AP mode Flex to Local	To check when AP mode changes from Flex to Local mode	Passed	
EWLCJ1713S_Reg_621	Check with windows client	To Check Tx status when connect with windows client	Passed	
EWLCJ1713S_Reg_622	Check with Android Client	To Check Tx status when connect with Android client	Passed	
EWLCJ1713S_Reg_623	Check with multiple clients at a time	To Check Tx status when connects multiple clients	Passed	
EWLCJ1713S_Reg_624	Generate Traffic check Tx status	To generate Traffic and check Tx status when client connects	Passed	
EWLCJ1713S_Reg_625	Connect multiple clients to 2.4 ghz radio	To connect multiple clients to 2.4 ghz	Passed	
EWLCJ1713S_Reg_626	Connect multiple clients to 5 ghz radio	To connect multiple clients to 5 ghz radio	Passed	
EWLCJ1713S_Reg_627	Check Radio reset code when change tag config radio	To check radio reset code when change tag config	Passed	

EWLCJ1713S_Reg_628	Check the radio reset code when change RF tag	To check the radio reset code when change RF tag	Passed	
EWLCJ1713S_Reg_629	Connect Surface client and check radio reset code	Connect surface client and check radio reset code	Passed	
EWLCJ1713S_Reg_630	Move AP from one controller to another	To check radio reset code and Tx when move AP from one controller to	Passed	
EWLCJ1713S_Reg_631	Reboot the AP and check reset codes	To check radio reset code when AP reboots	Passed	
EWLCJ1713S_Reg_632	Compare TX status with Wireshark	To compare TX status with Wireshark	Passed	
EWLCJ1713S_Reg_633	Check Tx Status for Android client with Wi-Fi 6E AP	To check when Android client connected to Wi-Fi 6E AP	Passed	
EWLCJ1713S_Reg_634	Check Tx Status for windows client with Wi-Fi 6E AP	To check Tx Status for windows client with Wi-Fi 6E AP	Passed	
EWLCJ1713S_Reg_635	Check Tx Status for Google pixel 7 pro client with Wi-Fi 6E AP	Check Tx Status for Google pixel 7 pro client with Wi-Fi 6E AP	Passed	
EWLCJ1713S_Reg_636	Check Tx Status for Samsung S22 ultra pro client with Wi-Fi 6E AP	Check Tx Status for Samsung S22 ultra pro client with Wi-Fi 6E AP	Passed	
EWLCJ1713S_Reg_637	Check Tx Status for Apple iPad 4th gen client with Wi-Fi 6E AP	Check Tx Status for Apple iPad 4th gen client with Wi-Fi 6E AP	Passed	

## N+1 Hitless Upgrade - Site based Upgrade

Logical ID	Title	Description	Status	Defect ID
EWLCJ1713S_Reg_290	Create mobility group between WLCs (9800-40)	WLC 1 will be in v1, WLC 2 will be in v2 and All AP's are joined to WLC 1 (all WLC will be in same mobility group and in install mode)	Passed	
EWLCJ1713S_Reg_291	Create mobility group between WLCs (9800-80)	WLC 1 will be in v1, WLC 2 will be in v2 and All AP's are joined to WLC 1 (all WLC will be in same mobility group and in install mode)	Passed	
EWLCJ1713S_Reg_292	Create mobility group between WLCs (9800-CL)	WLC 1 will be in v1, WLC 2 will be in v2 and All AP's are joined to WLC 1 (all WLC will be in same mobility group and in install mode)	Passed	
EWLCJ1713S_Reg_293	Create mobility group between WLCs (9800 HA setup)	WLC 1 will be in v1, WLC 2 will be in v2 and All AP's are joined to WLC 1 (all WLC will be in same mobility group and in install mode)	Passed	
EWLCJ1713S_Reg_294	Verify All AP's are predownload the version2 image and after reloading automatically join to WLC 2	Download version 2 image to WLC 1, execute ap preimage download manually, Once all AP's are predownloaded the image, execute command ap image upgrade destination <WLC 2 Name> <WLC 2 IP>	Passed	

EWLCJ1713S_Reg_295	Verify N+1 Rolling Image Upgrade using WebUI	To verify N+1 Rolling Image Upgrade using WebUI	Passed	
EWLCJ1713S_Reg_296	Verify N+1 Rolling Image Upgrade using CLI	To verify N+1 Rolling Image Upgrade using CLI	Passed	
EWLCJ1713S_Reg_297	Repeat the test case 2 then once all AP joined to WLC 2, then reload the WLC 1 with version 2 image and once WLC 1 is up move all AP's to wlc1 using command ap image move destination <WLC 1 Name> <WLC 1IP> [<Upgrade report Name>]	To repeat the test case 2 then once all AP joined to WLC 2, then reload the WLC 1 with version 2 image and once WLC 1 is up move all AP's to wlc1 using command ap image move destination <WLC 1 Name> <WLC 1IP> [<Upgrade report Name>]	Passed	
EWLCJ1713S_Reg_298	Connect Windows Client after test case 2	To connect Windows Client after test case 2	Passed	
EWLCJ1713S_Reg_299	Connect Android Client after test case 2	To connect Android Client after test case 2	Passed	
EWLCJ1713S_Reg_300	Connect MAC Client after test case 2	To connect MAC Client after test case 2	Passed	
EWLCJ1713S_Reg_301	Connect IOS Client after test case 2	To connect IOS Client after test case 2	Passed	
EWLCJ1713S_Reg_302	Check whether able to select custom site filter and download	To check able to select custom site filter	Passed	
EWLCJ1713S_Reg_303	Check whether able to give AP Upgrade per Iteration	To check whether able to give AP Upgrade per Iteration	Passed	
EWLCJ1713S_Reg_304	Check whether able to Change Accounting Percentage in AP Upgrade Configuration	To check whether able to Change Accounting Percentage in AP Upgrade Configuration	Passed	

EWLCJ1713S_Reg_305	Check whether able to select Accounting Action in AP Upgrade Configuration	To check whether able to select Accounting Action in AP Upgrade Configuration	Passed	
EWLCJ1713S_Reg_306	Check whether able to select Iteration expiry in AP Upgrade Configuration	To check whether able to select Iteration expiry in AP Upgrade Configuration	Passed	

## New Device Support for 9164/9166 AP

Logical ID	Title	Description	Status	Defect ID
EWLCJ1713S_Reg_505	Association of 9164/9166 AP with different eWLC model	To associate 9164/9166 AP to eWLC with latest image and check if the AP gets associated or not	Passed	
EWLCJ1713S_Reg_506	Associating 9164/9166 AP with different country code as with eWLC	To associate 9164/9166 AP with different country code and check if the AP does not get joined to eWLC	Passed	
EWLCJ1713S_Reg_507	Configuring AP with duplicate IP	To configure AP with a duplicate IP address and check if the AP shows error message and AP does not join the eWLC	Passed	
EWLCJ1713S_Reg_508	Rebooting the 9164/9166 AP	To check if the AP gets Rebooted or not and check if the AP joins the controller again.	Passed	
EWLCJ1713S_Reg_509	Rebooting the AP with primary controller given in High Availability	To reboot the AP by giving the primary controller IP using high availability and check if the AP joins the primary controller	Passed	
EWLCJ1713S_Reg_510	Checking the details of the AP through the CLI	To check the details of the AP using CLI and check if the details are correctly shown or not	Passed	
EWLCJ1713S_Reg_511	Connecting a Window client to the 9164/9166 AP	To connect a window client to the AP and check if the client gets connected to the AP without any errors.	Passed	

EWLCJ1713S_Reg_512	Connecting a Android client to the 9164/9166 AP	To connect a Android client to the AP and check if the client gets connected to the AP without any errors.	Passed	
EWLCJ1713S_Reg_513	Connecting a IOS client to the 9164/9166 AP	To connect a IOS client to the AP and check if the client gets connected to the AP without any errors.	Passed	
EWLCJ1713S_Reg_514	Connecting a MAC client to the 9164/9166 AP	To connect a MAC client to the AP and check if the client gets connected to the AP without any errors.	Passed	
EWLCJ1713S_Reg_515	AP failover priority with critical	To check AP failover priority with critical and check if the AP gets connected to the next controller .	Passed	
EWLCJ1713S_Reg_516	AP failover priority with High priority	To check AP failover priority with critical and check if the AP gets connected to the next controller .	Passed	
EWLCJ1713S_Reg_517	Moving AP from 9800-40 eWLC to 9800-80 through High availability	To check if the AP moves from 9800-40 eWLC to 9800-80 eWLC through high availability.	Passed	
EWLCJ1713S_Reg_518	Reassociation of client to the AP after reboot	To verify if the client gets reassociated to the to the AP .	Passed	

EWLCJ1713S_Reg_519	Checking if the client do not connect to the AP after rebooting and joining the primary controller	To check if the client gets connected to the AP after rebooting the AP and AP joining the primary controller .where there is no same WLAN	Passed	
EWLCJ1713S_Reg_520	Performing Intra controller roaming of Android client	To check whether intra controller roaming of Android clients works properly or not	Passed	
EWLCJ1713S_Reg_521	Performing Intra controller roaming of IOS client	To check whether intra controller roaming of IOS clients works properly or not in eWLC	Passed	
EWLCJ1713S_Reg_522	Performing Intra controller roaming of Mac OS client	To check whether intra controller roaming of MacOS clients works properly or not	Passed	
EWLCJ1713S_Reg_523	Performing Inter controller roaming of Windows OS client	To check whether inter controller roaming of windows clients works properly or not	Passed	
EWLCJ1713S_Reg_524	Performing Inter controller roaming of Android client	To check whether inter controller roaming of Android clients works properly or not	Passed	
EWLCJ1713S_Reg_525	Performing Inter controller roaming of IOS client	To check whether inter controller roaming of IOS clients works properly or not	Passed	
EWLCJ1713S_Reg_526	Performing Inter controller roaming of Mac OS client	To check whether inter controller roaming of Mac OS clients works properly or not	Passed	



EWLCJ1713S_Reg_527	Change AP mode from local to Flex connect in 9164/9166 AP.	To change the mode of AP from local mode to Flexconnect mode and check if the AP does not reboot.	Passed	
EWLCJ1713S_Reg_528	Changing the AP from Flexconnect to Local mode and check if the AP reboot	To check if the AP reboots when AP mode is changed from flexconnect to Local mode .	Passed	
EWLCJ1713S_Reg_529	Adding two 9164/9166 AP in the AP group and connecting a client to the AP with specific WLAN	To add two 9164/9166 AP in AP group and map a WLAN to group and connect a client to the WLAN and check the client connectivity	Passed	
EWLCJ1713S_Reg_530	Configuring different Syslog facility for 9115 11ax AP in eWLC and checking the same in the APs	To configure different syslog facility for 9115 AP in eWLC AP join profile and validating the same in the AP	Passed	
EWLCJ1713S_Reg_531	Packet capture of client when the client is connected to 9115/9120 AP with 2.4 GHz	To capture the Packet of the client when the client is connected to AP with radio as 2.4GHz	Passed	
EWLCJ1713S_Reg_532	Verify details by connecting client to 2.4Ghz radio of 9164/9166 AP.	To verify OFDMA details by connecting client to 2.4 Ghz radio.	Passed	
EWLCJ1713S_Reg_533	Verify details by connecting client to 5 Ghz radio of 9164/9166 AP	To verify OFDMA details by connecting client to 5 Ghz radio.	Passed	
EWLCJ1713S_Reg_534	Verify 9164/9166AP MU-MIMO details with client connecting to WPA2 configured WLAN	To verify 11ax MU-MIMO details of 9164/9166 AP with client connecting to WPA2 configured WLAN	Passed	

EWLCJ1713S_Reg_535	Verify 9164/9166AP MU-MIMO details with client connecting to WPA 3 configured WLAN	To verify 11ax MU-MIMO details of 9164/9166 AP with client connecting to WPA 3 configured WLAN	Passed	
--------------------	--	--	--------	--

## OEAP URL based ACLs for split tunnel

Logical ID	Title	Description	Status	Defect ID
EWLCJ1713S_Reg_153	Configure an Access Control List for Split Tunnelling	To configure an Access Control List for Split Tunnelling	Passed	CSCwh15623
EWLCJ1713S_Reg_154	Link ACL Policy to the Defined ACL	To link ACL Policy to the Defined ACL	Passed	
EWLCJ1713S_Reg_155	Configure a Wireless Profile Policy and a Split MAC ACL Name	To configure a Wireless Profile Policy and a Split MAC ACL Name	Passed	
EWLCJ1713S_Reg_156	Configure Office Extend AP through GUI	To configure Office Extend AP through GUI	Passed	
EWLCJ1713S_Reg_157	Configure Office Extend AP through CLI	To configure Office Extend AP through CLI	Passed	
EWLCJ1713S_Reg_158	Verify whether your able to access the Access Point Office Extend through GUI or not	To verify whether your able to access the Access Point Office Extend through GUI or not	Passed	
EWLCJ1713S_Reg_159	Connect Windows Client for Office Extend AP	To connect Windows Client for Office Extend AP	Passed	
EWLCJ1713S_Reg_160	Connect Android Client for Office Extend AP	To connect Android Client for Office Extend AP	Passed	
EWLCJ1713S_Reg_161	Connect Go Plus Client for Office Extend AP	To connect Go Plus Client for Office Extend AP	Passed	
EWLCJ1713S_Reg_162	Connect MAC Client for Office Extend AP	To connect MAC Client for Office Extend AP	Passed	
EWLCJ1713S_Reg_163	Connect IOS Client for Office Extend AP	To connect IOS Client for Office Extend AP	Passed	
EWLCJ1713S_Reg_164	Verify Locally switched traffic using Packet Capture	To verify Locally switched traffic using Packet Capture	Passed	

EWLCJ1713S_Reg_165	Connect any client through centralized SSID	To connect any client through centralized SSID	Passed	
EWLCJ1713S_Reg_166	Verify Office Extend AP details	To verify Office Extend AP details	Passed	
EWLCJ1713S_Reg_167	Verify whether your able to access Office Extend Access Point through a browser or not for 9105 AP	To verify whether your able to access Office Extend Access Point through a browser or not for 9105 AP	Passed	
EWLCJ1713S_Reg_168	Verify whether your able to access Office Extend Access Point through a browser or not for 9120 AP	To verify whether your able to access Office Extend Access Point through a browser or not for 9120 AP	Passed	
EWLCJ1713S_Reg_169	Verify whether your able to access Office Extend Access Point through a browser or not for 9130 AP	To verify whether your able to access Office Extend Access Point through a browser or not for 9130 AP	Passed	
EWLCJ1713S_Reg_170	Verify whether your able to access Office Extend Access Point through a browser or not for 4800 AP	To verify whether your able to access Office Extend Access Point through a browser or not for 4800 AP	Passed	
EWLCJ1713S_Reg_171	Verify MAC Filtering for Office Extend Access Point	To verify MAC Filtering for Office Extend Access Point	Passed	

## Per client Bidirectional rate limiting, flex local switching

Logical ID	Title	Description	Status	Defect ID
EWLCJ1713S_Reg_240	Configuring rate limit for per client for Android client with WPA 2 Personal security with QOS as Silver	To configure rate limit for client with open security and QOS as silver and check if the client gets the rate that is been configured or not.	Passed	
EWLCJ1713S_Reg_241	Configuring rate limit for per client for S10 client with WPA 2 Personal security with QOS as Silver	To configure rate limit for S10 client with open security and QOS as silver and check if the client gets the rate that is been configured or not.	Passed	
EWLCJ1713S_Reg_242	Configuring rate limit for per client for Mac OS client with WPA 2 Personal security with QOS as Silver	To configure rate limit for Mac OS client with open security and QOS as silver and check if the client gets the rate that is been configured or not.	Passed	
EWLCJ1713S_Reg_243	Configuring rate limit for per client for IOS client with WPA 2 Personal security with QOS as Silver	To configure rate limit for IOS client with open security and QOS as silver and check if the client gets the rate that is been configured or not.	Passed	
EWLCJ1713S_Reg_244	Configuring rate limit for per client with QOS as Gold for S10 client with WPA 2 Enterprise security	To configure rate limit per client with QOS as Gold and connecting a S10 client with WPA 2 Enterprise security and check if the rate limit is applied or not.	Passed	CSCwh68330

EWLCJ1713S_Reg_245	Configuring rate limit for per client with QOS as Gold for Android client with WPA 2 Enterprise security	To configure rate limit per client with QOS as Gold and connecting a Android client with WPA 2 Enterprise security and check if the rate limit is applied or not.	Passed	
EWLCJ1713S_Reg_246	Configuring rate limit for per client with QOS as Gold for IOS client with WPA 2 Enterprise security	To configure rate limit per client with QOS as Gold and connecting a IOS client with WPA 2 Enterprise security and check if the rate limit is applied or not.	Passed	
EWLCJ1713S_Reg_247	Configuring rate limit for per client with QOS as Gold for Mac OS client with WPA 2 Enterprise security	To configure rate limit per client with QOS as Gold and connecting a Mac OS client with WPA 2 Enterprise security and check if the rate limit is applied or not.	Passed	
EWLCJ1713S_Reg_248	Connecting a client to a WLAN configured with rate limit using two different AP	To configure rate limit for client and connecting a client to one AP and check the rate limit and making that AP down and connecting the client to other AP and check if the behaviour of the client is same or not	Passed	
EWLCJ1713S_Reg_249	Connecting a client to a WLAN configured with rate limit using one ME capable AP and Non Me capable AP in AP group	To Connecting a client to a WLAN configured with rate limit using one ME capable AP and Non Me capable AP in AP group	Passed	

EWLCJ1713S_Reg_250	Creating a AVC rule for the WLAN for which rate limit is configured .	To configure lesser rate limit in WLAN and configuring higher rate limit in AVC and check if the rate limit for the client	Passed	
EWLCJ1713S_Reg_251	Check if windows client works for bidirectional rate limit	To check if windows client works for bidirectional rate limit	Passed	
EWLCJ1713S_Reg_252	Check if rate limit varies post roaming scenario	To check if rate limit varies post roaming scenario	Passed	CSCwh84336
EWLCJ1713S_Reg_253	Verify rate limit for different models of AP	Verify rate limit for different models of AP	Passed	

## PER SSID filtering for assurance on Cat9800

Logical ID	Title	Description	Status	Defect ID
EWLCJ1713S_Reg_418	Configure per ssid filtering from cli for 9800-L controller	To configure per ssid filtering from cli for 9800-L controller	Passed	
EWLCJ1713S_Reg_419	Configure per ssid filtering from cli for 9800-CL controller	To configure per ssid filtering from cli for 9800-CL controller	Passed	
EWLCJ1713S_Reg_420	Configure per ssid filtering from cli for 9800-80 controller	To configure per ssid filtering from cli for 9800-80 controller	Passed	
EWLCJ1713S_Reg_421	Check for windows client connectivity and verify client related details for the configured ssid	To check for windows client connectivity and verify client related details for the configured ssid	Passed	
EWLCJ1713S_Reg_422	Check for Mac client connectivity and verify client related details for the configured ssid	To check for Mac client connectivity and verify client related details for the configured ssid	Passed	
EWLCJ1713S_Reg_423	Check for Android client connectivity and verify client related details for the configured ssid	To check for Android client connectivity and verify client related details for the configured ssid	Passed	
EWLCJ1713S_Reg_424	Check for iOS client connectivity and verify client related details for the configured ssid	To check for iOS client connectivity and verify client related details for the configured ssid	Passed	
EWLCJ1713S_Reg_425	Check for surface client connectivity and verify client related details for the configured ssid	To check for surface client connectivity and verify client related details for the configured ssid	Passed	



EWLCJ1713S_Reg_426	Compare and verify the Client related details changes before and after per ssid filtering	To compare and verify the Client related details changes before and after per ssid filtering	Passed	
EWLCJ1713S_Reg_427	Check whether the 9105 Ap support per ssid filtering	To check whether the 9105 Ap support per ssid filtering	Passed	
EWLCJ1713S_Reg_428	Check whether the 9115 Ap support per ssid filtering	To check whether the 9115 Ap support per ssid filtering	Passed	
EWLCJ1713S_Reg_429	Check whether the 9120 Ap support per ssid filtering	To check whether the 9120 Ap support per ssid filtering	Passed	
EWLCJ1713S_Reg_430	Check whether the 9130 Ap support per ssid filtering	To check whether the 9130 Ap support per ssid filtering	Passed	
EWLCJ1713S_Reg_431	Check whether the open security ssid supports per ssid filtering	To check whether the open security ssid supports per ssid filtering	Passed	
EWLCJ1713S_Reg_432	Check whether the wpa2-802.1x security ssid supports per ssid filtering	To check whether the wpa2-802.1x security ssid supports per ssid filtering	Passed	
EWLCJ1713S_Reg_433	Check whether the wpa2-psk security ssid supports per ssid filtering	To check whether the wpa2-psk security ssid supports per ssid filtering	Passed	
EWLCJ1713S_Reg_434	Check whether the wpa3-802.1x security ssid supports per ssid filtering	To check whether the wpa3-802.1x security ssid supports per ssid filtering	Passed	
EWLCJ1713S_Reg_435	Check whether the wpa3-sae security ssid supports per ssid filtering	To check whether the wpa3-sae security ssid supports per ssid filtering	Passed	

EWLCJ1713S_Reg_436	Check Whether the windows clients information are seen in DNAC after configuring per ssid filtering	To check Whether the windows clients information are seen in DNAC after configuring per ssid filtering	Passed	
EWLCJ1713S_Reg_437	Check Whether the mac clients information are seen in DNAC after configuring per ssid filtering	To check Whether the mac clients information are seen in DNAC after configuring per ssid filtering	Passed	
EWLCJ1713S_Reg_438	Check Whether the iOS clients information are seen in DNAC after configuring per ssid filtering	To check Whether the iOS clients information are seen in DNAC after configuring per ssid filtering	Passed	
EWLCJ1713S_Reg_439	Check Whether the android clients information are seen in DNAC after configuring per ssid filtering	To check Whether the android clients information are seen in DNAC after configuring per ssid filtering	Passed	
EWLCJ1713S_Reg_440	Check Whether the surface clients information are seen in DNAC after configuring per ssid filtering	To check Whether the surface clients information are seen in DNAC after configuring per ssid filtering	Passed	

## Provide alert mechanism on web-ui for critical events on controller

Logical ID	Title	Description	Status	Defect ID
EWLCJ1713S_Reg_211	Verify alerts are displayed for critical events	To Verify alerts are displayed for critical events	Passed	
EWLCJ1713S_Reg_212	Verify alerts are displayed for alert events	To Verify alerts are displayed for alert events	Passed	
EWLCJ1713S_Reg_213	Verify alerts are displayed for emergency events	To Verify alerts are displayed for emergency events	Passed	
EWLCJ1713S_Reg_214	Export syslog events	To Export syslog events from WebUI	Passed	
EWLCJ1713S_Reg_215	Verify user able to filter options	To Verify user able to filter syslog messages	Passed	
EWLCJ1713S_Reg_216	Disable Event banner	To Disable Event banner using preference	Passed	
EWLCJ1713S_Reg_217	Enable Event banner	To Enable Event banner using preference	Passed	
EWLCJ1713S_Reg_218	Delete an Event Notification	To Delete an Event Notification	Passed	
EWLCJ1713S_Reg_219	Delete multiple/all Event Notification	To Delete multiple/all Event Notification	Passed	
EWLCJ1713S_Reg_220	Verify Event count in Pie chart	To Verify Event count are properly shown in Pie chart	Passed	
EWLCJ1713S_Reg_221	Force Switchover in HA and verify alerts are shown	To Force Switchover in HA and verify alerts are shown	Passed	
EWLCJ1713S_Reg_222	Verify Banner preferences after switchover in HA	To Verify Banner preferences after switchover in HA	Passed	

## PSK + Multi Auth Support for Guest

Logical ID	Title	Description	Status	Defect ID
EWLCJ1713S_Reg_71	Creating Wlan with WPA2 Security with MPSK	Verify Wlan Creating with WPA2 Security with MPSK	Passed	
EWLCJ1713S_Reg_72	Edit WPA2 Security PSK Keys on MPSK	Verify Wlan Edit with WPA2 Security with MPSK	Passed	
EWLCJ1713S_Reg_73	Delete WPA2 Security PSK Keys on MPSK	Verify Wlan Delete with WPA2 Security with MPSK	Passed	
EWLCJ1713S_Reg_74	Creating Wlan with WPA2 Security with MPSK - Format with Hexa:	Verify Creating Wlan with WPA2 Security with MPSK - Format with Hexa:	Passed	
EWLCJ1713S_Reg_75	Creating Wlan with WPA2 Security with MPSK - Password Type : AES :	Verify the Security Type with Advance Security	Passed	
EWLCJ1713S_Reg_76	Verify WPA2 Security with MPSK Applied in Wlan's with Window's Clients with all the 5 Key Combinations	Verify WPA2 Security with MPSK Applied in Wlan's with Window's Clients with all the 5 Key Combinations	Passed	
EWLCJ1713S_Reg_77	Connect the MAC Clients	Verify Connect the MAC Clients with all the 5 Key Combinations	Passed	
EWLCJ1713S_Reg_78	Connect the Android Clients	Verify Connect the Android Clients with all the 5 Key Combinations:	Passed	
EWLCJ1713S_Reg_79	Connect the Apple Mobile Clients with all the 5 Key Combinations:	Verify Connect the Apple Clients with all the 5 Key Combinations:	Passed	
EWLCJ1713S_Reg_80	Connect the Windows Clients with all the 5 Key Combinations:	Verify Connect the Windows Clients with all the 5 Key Combinations:	Passed	

EWLCJ1713S_Reg_81	MPSK with Ap Model 9115	Verify the Configurations with Ap Different Ap Model 9115	Passed	
EWLCJ1713S_Reg_82	Connect Ap Model 9120	Verify the Configurations with Ap Different Ap Model 9120:	Passed	
EWLCJ1713S_Reg_83	Connect Ap Model 4800	Verify the Configurations with Ap Different Ap Model 4800:	Passed	
EWLCJ1713S_Reg_84	Connect Ap Model 3800	Verify the Configurations with Ap Different Ap Model 3800	Passed	
EWLCJ1713S_Reg_85	Connect Ap Model 3700	Verify the Configurations with Ap Different Ap Model 3700	Passed	
EWLCJ1713S_Reg_86	Connect Ap Model 1532	Verify the Configurations with Ap Different Ap Model 1532:	Passed	

## Rogue PMF Containment and improve detection

Logical ID	Title	Description	Status	Defect ID
EWLCJ1713S_Reg_536	Verify whether 2.4Ghz Serving radio Rogue Detection or not	To validate BSSID, Channel, SSID, Channel Width, Report count are updated correctly or not for 2.4Ghz	Passed	
EWLCJ1713S_Reg_537	Verify whether 5Ghz Serving radio Rogue Detection or not	To validate BSSID, Channel, SSID, Channel Width, Report count are updated correctly or not for 5Ghz	Passed	
EWLCJ1713S_Reg_538	Verify whether 6Ghz Serving radio Rogue Detection or not	To validate BSSID, Channel, SSID, Channel Width, Report count are updated correctly or not for 6Ghz	Passed	
EWLCJ1713S_Reg_539	Verify 2.4Ghz Aux Radio Rogue Detection	To check 2.4GHz Aux Radio Rogue Detection	Passed	
EWLCJ1713S_Reg_540	Verify 5Ghz Aux Radio Rogue Detection	To check 5Ghz Aux Radio Rogue Detection	Passed	
EWLCJ1713S_Reg_541	Verify 6Ghz Aux Radio Rogue Detection	To check 6Ghz Aux Radio Rogue Detection	Passed	
EWLCJ1713S_Reg_542	Verify whether 2.4Ghz Serving Radio Rogue client detection or not	To verify whether 2.4Ghz Serving Radio Rogue client detection or not	Passed	
EWLCJ1713S_Reg_543	Verify whether 5Ghz Serving Radio Rogue client detection or not	To verify whether 5Ghz Serving Radio Rogue client detection or not	Passed	
EWLCJ1713S_Reg_544	Verify whether 6Ghz Serving Radio Rogue client detection or not	To verify whether 6Ghz Serving Radio Rogue client detection or not	Passed	

EWLCJ1713S_Reg_545	Verify Serving Channel AP BSSID containment for Non-PMF Containment	To verify respective rogue serving channel AP bssid and rogue clients detected and contained	Passed	
EWLCJ1713S_Reg_546	Verify Different Channel AP BSSID containment for Non-PMF Containment	To verify respective rogue different channel AP bssid and rogue clients detected and contained	Passed	
EWLCJ1713S_Reg_547	Verify Serving Channel Rogue Client containment for Non-PMF Containment	To verify respective serving channel rogue clients detected and contained	Passed	
EWLCJ1713S_Reg_548	Verify Different Channel Rogue Client containment for Non-PMF Containment	To verify respective different channel rogue clients detected and contained	Passed	
EWLCJ1713S_Reg_549	One AP Serving channel Rogue AP BSSID containment	To check One AP Serving channel Rogue AP BSSID containment	Passed	
EWLCJ1713S_Reg_550	Multiple AP Serving channel Rogue AP BSSID containment	To check Multiple AP Serving channel Rogue AP BSSID containment	Passed	
EWLCJ1713S_Reg_551	Serving channel Rogue Auto containment	To check Serving channel Rogue Auto containment	Passed	
EWLCJ1713S_Reg_552	Serving channel Rogue rule-based containment	To check Serving channel Rogue rule-based containment	Passed	
EWLCJ1713S_Reg_553	Non-serving channel Rogue client containment	To check Non-serving channel Rogue client containment	Passed	
EWLCJ1713S_Reg_554	Serving channel Rogue client containment and channel change	To check Serving channel Rogue client containment and channel change	Passed	

EWLCJ1713S_Reg_555	Configure Multi BSSID and verify stats tests	To verify all SSIDs & BSSIDs in rogue beacon is listed in rogue or not	Passed	
EWLCJ1713S_Reg_556	Verify statistics radios	To display the statistics for radios	Passed	
EWLCJ1713S_Reg_557	Verify Rogue entries when one of the radio is in monitor mode	To verify Rogue entries when one of the radio is in monitor mode	Passed	
EWLCJ1713S_Reg_558	Verify Rogue entries when AP is in monitor mode	To verify Rogue entries when AP is in monitor mode	Passed	
EWLCJ1713S_Reg_559	Verify whether Wifi-6E APs Serving Radio Rogue client detection or not	To verify Rogue Client detection for 9164 Aps	Passed	
EWLCJ1713S_Reg_560	Verify whether Wifi-6E APs Serving Radio Rogue client detection or not	To verify Rogue Client detection for 9166 Aps	Passed	



## Scheduling of SSID broadcast

Logical ID	Title	Description	Status	Defect ID
EWLCJ1713S_Reg_275	Configure Daily Calendar Profile	To configure Daily Calendar Profile	Failed	CSCwh15397
EWLCJ1713S_Reg_276	Configure Weekly Calendar Profile	To configure Weekly Calendar Profile	Passed	
EWLCJ1713S_Reg_277	Configure Monthly Calendar Profile	To configure Monthly Calendar Profile	Passed	
EWLCJ1713S_Reg_278	Configure Daily, Weekly and Monthly Calendar Profile through CLI	To configure Daily, Weekly and Monthly Calendar Profile through CLI	Passed	
EWLCJ1713S_Reg_279	Map Calendar Profile to a Policy Profile	To Map Calendar Profile to a Policy Profile	Passed	
EWLCJ1713S_Reg_280	Try deleting the calendar profile when it is already attached to the policy profile	To try deleting the calendar profile when it is already attached to the policy profile	Passed	
EWLCJ1713S_Reg_281	While the calendar profile is attached to policy profile, update the timer range for calendar profile	To update the timer range for calendar profile	Passed	
EWLCJ1713S_Reg_282	Delete the calendar profile from the policy profile	To delete the calendar profile from the policy profile	Passed	
EWLCJ1713S_Reg_283	Map multiple calendar profiles to a Policy Profile	To Map multiple calendar profiles to a Policy Profile	Passed	
EWLCJ1713S_Reg_284	Verify Windows client is able to connect to the WLAN only during the configured times	To verify Windows client is able to connect to the WLAN only during the configured times	Passed	

EWLCJ1713S_Reg_285	Verify Android client is able to connect to the WLAN only during the configured times	To verify Android client is able to connect to the WLAN only during the configured times	Passed	
EWLCJ1713S_Reg_286	Verify IOS client is able to connect to the WLAN only during the configured times	To verify IOS client is able to connect to the WLAN only during the configured times	Passed	
EWLCJ1713S_Reg_287	Verify MAC client is able to connect to the WLAN only during the configured times	To verify MAC client is able to connect to the WLAN only during the configured times	Passed	
EWLCJ1713S_Reg_288	Verify Surface client is able to connect to the WLAN only during the configured times	To verify Surface client is able to connect to the WLAN only during the configured times	Passed	
EWLCJ1713S_Reg_289	Verify client is able to connect to the WLAN in Flex mode only during the configured times	To verify client is able to connect to the WLAN in Flex mode only during the configured times	Passed	

## Smart Licencing

Logical ID	Title	Description	Status	Defect ID
EWLCJ1713S_Reg_112	Smart Account Creation, registration and activation.	To verify smart Account Creation, registration and activation.	Passed	
EWLCJ1713S_Reg_113	Enable Smart Licencing and Register Device	To enable Smart Licencing and Register Device	Passed	
EWLCJ1713S_Reg_114	Smart License Reservation	To perform Smart License Reservation and verify details	Passed	
EWLCJ1713S_Reg_115	Deleting SLR Licenses	To verify by deleting SLR Licenses	Passed	
EWLCJ1713S_Reg_116	Smart Licencing HA Support	To verify Smart Licencing for HA Support	Passed	
EWLCJ1713S_Reg_117	Change a SLR on a C9800 SSO HA pair	To change a SLR on a C9800 SSO HA pair	Passed	
EWLCJ1713S_Reg_118	Removing SLR from a C9800 SSO HA pair	To verify by removing SLR from a C9800 SSO HA pair	Passed	
EWLCJ1713S_Reg_119	Validate license info in HA SSO RMI pair	To validate license info in HA SSO RMI pair	Passed	
EWLCJ1713S_Reg_120	Validate license info on Standby unit directly	To validate license info on standby unit directly	Passed	
EWLCJ1713S_Reg_121	Validate license info after ISSU upgrade	To validate license info after ISSU upgrade	Passed	
EWLCJ1713S_Reg_122	Validate license info after multiple switchover	To validate license info after multiple switchover	Passed	
EWLCJ1713S_Reg_123	Validate license info on multiple reload	To validate license info on multiple reboot	Passed	

## SSID per radio on Dual 5G

Logical ID	Title	Description	Status	Defect ID
EWLCJ1713S_Reg_28	Associate client to 5 GHz radio policy with slot 0	To verify slot details shown or not	Passed	
EWLCJ1713S_Reg_29	Associate client to 5 GHz radio policy with slot 1	To verify slot details shown or not	Passed	
EWLCJ1713S_Reg_30	Associate client to 5 GHz radio policy with slot 2	To verify slot details shown or not	Passed	
EWLCJ1713S_Reg_31	Creating WLAN with 6 GHz radio policy	To Validate client details with 6 GHz radio	Passed	
EWLCJ1713S_Reg_32	Associating windows client to 9115 Ap with WPA2 security type for 2.4GHz radio policy	To Verify Windows client associate to 2.4 GHz radio with WPA2 security type or not	Passed	
EWLCJ1713S_Reg_33	Associating Android client to 9120 Ap with WPA2 security type for 5GHz radio policy	To Verify android client associate to 5 GHz radio with WPA2 security type or not	Passed	
EWLCJ1713S_Reg_34	Associating iOS client to 9130 Ap with WPA2 security type for 6GHz radio policy	To Verify iOS client associate to 6 GHz radio with WPA2 security type or not	Passed	
EWLCJ1713S_Reg_35	Associating Mac client to 9105 Ap with WPA3 security type for 2.4GHz radio policy	To Verify mac client associate to 2.4 GHz radio with WPA3 security type or not	Passed	
EWLCJ1713S_Reg_36	Associating Ms-go client to 9115 Ap with WPA3 security type for 5GHz radio policy	To associate the client and verifying EDCA parameter	Passed	

EWLCJ1713S_Reg_37	Associating MS-GO2 client to 9120 Ap with WPA3 + AES cipher + OWE AKM security type for 6GHz radio policy	To Verify MS-GO2 client associate to 6 GHz radio with WPA3 + AES cipher + OWE AKM security type or not	Passed	
EWLCJ1713S_Reg_38	Associating client with WPA3 + AES cipher + 802.1x-SHA256 AKM security type for 6GHz radio policy	To Verify Windows client associate to 6 GHz radio with WPA3 security type or not	Passed	
EWLCJ1713S_Reg_39	Associating client with WPA3 + AES cipher + SAE AKM security type for 6GHz radio policy	To Verify client associate to 6 GHz radio with WPA3 + AES cipher + SAE AKM security type or not	Passed	
EWLCJ1713S_Reg_40	Associating client with WPA3 + CCMP256 cipher + SUITEB192-1X AKM security type for 6GHz radio policy	To Verify client associate to 6 GHz radio with WPA3 + CCMP256 cipher + SUITEB192-1X AKM security type or not	Passed	
EWLCJ1713S_Reg_41	Associating client with WPA3 + GCMP256 cipher + SUITEB-1X AKM security type for 6GHz radio policy	To Verify client associate to 6 GHz radio with WPA3 + GCMP256 cipher + SUITEB-1X AKM security type or not	Passed	
EWLCJ1713S_Reg_42	Associating client with WPA3 + GCMP128 cipher + SUITEB192-1X AKM security type for 6GHz radio policy	To Verify client associate to 6 GHz radio with WPA3 + GCMP128 cipher + SUITEB192-1X AKM security type or not	Passed	
EWLCJ1713S_Reg_43	Associating client with WPA3 + adaptive WPA2 security type for 6GHz radio policy	To Verify client associate to 6 GHz radio with WPA3 + adaptive WPA2 security type or not	Passed	

EWLCJ1713S_Reg_44	Perform inter roaming across different radio policy	To verify radio policy details after inter roaming	Passed	
EWLCJ1713S_Reg_45	Perform intra roaming across different radio policy	To verify radio policy details after intra roaming	Passed	
EWLCJ1713S_Reg_46	Perform IRCM across different radio policy	To verify radio policy details after IRCM	Passed	
EWLCJ1713S_Reg_47	Validate radio policy details in PI	To verify radio policy details after config pushed to PI	Passed	
EWLCJ1713S_Reg_48	Validate 2.4 GHz radio policy details in DNAC	To verify 2.4 GHz radio policy details after config pushed to DNAC	Passed	
EWLCJ1713S_Reg_49	Validate 5 GHz radio policy details in DNAC	To verify 5 GHz radio policy details after config pushed to DNAC	Passed	
EWLCJ1713S_Reg_50	Validate 6 GHz radio policy details in DNAC	To verify 6 GHz radio policy details after config pushed to DNAC	Passed	
EWLCJ1713S_Reg_51	Validate stots of radio policy in CMX	To verify 5 GHz radio slots difference in CMX	Passed	
EWLCJ1713S_Reg_52	Limit the client by radio policy	To verify the no of client associate with particular radio policy	Passed	

# Open RRM

Logical ID	Title	Description	Status	Defect ID
EWLCJ1713S_Reg_172	Configure open rrm and enable connectivity to kairos cloud	To configure open rrm and enable connectivity to kairos cloud	Passed	
EWLCJ1713S_Reg_173	Configure open rrm and test for 5ghz band	To configure open rrm and for 5ghz band	Passed	
EWLCJ1713S_Reg_174	Configure open rrm and test for 2.4ghz band	To configure open rrm and test for 2.4ghz band	Passed	
EWLCJ1713S_Reg_175	Configure open rrm with WPA3 security	To configure open rrm with WPA3 security	Passed	
EWLCJ1713S_Reg_176	Configure open rrm with WPA2 security	To configure open rrm with WPA2 security	Passed	
EWLCJ1713S_Reg_177	Configure open rrm and test with android client	To configure open rrm and test with android client	Passed	
EWLCJ1713S_Reg_178	Configure open rrm and test with iPhone client	To configure open rrm and test with iPhone client	Passed	
EWLCJ1713S_Reg_179	Configure open rrm and test with Mac client	To configure open rrm and test with Mac client	Passed	
EWLCJ1713S_Reg_180	Configure open rrm and test with Surface client	To configure open rrm and test with Surface client	Passed	
EWLCJ1713S_Reg_181	Configure open rrm and test with Windows client	To configure open rrm and test with Windows client	Passed	
EWLCJ1713S_Reg_182	Configure open rrm and test with only FRA enabled	To configure open rrm and test with only FRA enabled	Passed	
EWLCJ1713S_Reg_183	Configure open rrm and test with only DCA enabled	To configure open rrm and test with only DCA enabled	Passed	

EWLCJ1713S_Reg_184	Configure open rrm and test with only TPC enabled	To configure open rrm and test with only TPC enabled	Passed	
EWLCJ1713S_Reg_185	Configure open rrm and test with only DBS enabled	To configure open rrm and test with only DBS enabled	Passed	
EWLCJ1713S_Reg_186	Configure open rrm and test with different RF algorithm combinations	To configure open rrm and test with different RF algorithm combinations	Passed	
EWLCJ1713S_Reg_187	Configure open rrm and test with manually assigned channel bandwidth and channel nos	To configure open rrm and test with manually assigned channel bandwidth and channel nos	Passed	
EWLCJ1713S_Reg_188	Configure open rrm and test with 9115, 9120, 9130 AP	To configure open rrm and test with 9115, 9120, 9130 AP	Passed	
EWLCJ1713S_Reg_189	Configure open rrm and test with 4800 AP	To configure open rrm and test with 4800 AP	Passed	



## Systemic CAP - Enable Secure Data Wipe capabilities for Legacy Products (Wireless - AP)

Logical ID	Title	Description	Status	Defect ID
EWLCJ1713S_Reg_460	Do Data Wipe in 9120 AP from 9800-L Controller	To do Data Wipe in 9120 AP from 9800-L Controller UI and CLI and Check for Data sanitization logs from AP console	Passed	
EWLCJ1713S_Reg_461	Do Data Wipe in 9130 AP from 9800-L Controller	To do Data Wipe in 9130 AP from 9800-L Controller UI and CLI and Check for Data sanitization logs from AP console	Passed	
EWLCJ1713S_Reg_462	Do Data Wipe in 9115 AP from 9800-L Controller	To do Data Wipe in 9115 AP from 9800-L Controller UI and CLI and Check for Data sanitization logs from AP console	Passed	
EWLCJ1713S_Reg_463	Do Data Wipe in 9105 AP from 9800-L Controller	To do Data Wipe in 9105 AP from 9800-L Controller UI and CLI and Check for Data sanitization logs from AP console	Passed	
EWLCJ1713S_Reg_464	Do Data Wipe in 9124 AP from 9800-L Controller	To do Data Wipe in 9124 AP from 9800-L Controller UI and CLI and Check for Data sanitization logs from AP console	Passed	

EWLCJ1713S_Reg_465	Do Data Wipe in 9164 AP from 9800-L Controller	To do Data Wipe in 9164 AP from 9800-L Controller UI and CLI and Check for Data sanitization logs from AP console	Passed	
EWLCJ1713S_Reg_466	Do Data Wipe in 9166 AP from 9800-L Controller	To do Data Wipe in 9166 AP from 9800-L Controller UI and CLI and Check for Data sanitization logs from AP console	Passed	
EWLCJ1713S_Reg_467	Do Data Wipe in 4800 AP from 9800-L Controller	To do Data Wipe in 4800 AP from 9800-L Controller UI and CLI and Check for Data sanitization logs from AP console	Passed	
EWLCJ1713S_Reg_468	Do Data Wipe in 9120 AP from 9800-CL Controller	To do Data Wipe in 9120 AP from 9800-CL Controller UI and CLI and Check for Data sanitization logs from AP console	Passed	
EWLCJ1713S_Reg_469	Do Data Wipe in 9130 AP from 9800-CL Controller	To do Data Wipe in 9130 AP from 9800-CL Controller UI and CLI and Check for Data sanitization logs from AP console	Passed	
EWLCJ1713S_Reg_470	Do Data Wipe in 9115 AP from 9800-CL Controller	To do Data Wipe in 9115 AP from 9800-CL Controller UI and CLI and Check for Data sanitization logs from AP console	Passed	

EWLCJ1713S_Reg_471	Do Data Wipe in 9105 AP from 9800-CL Controller	To do Data Wipe in 9105 AP from 9800-CL Controller UI and CLI and Check for Data sanitization logs from AP console	Passed	
EWLCJ1713S_Reg_472	Do Data Wipe in 9124 AP from 9800-CL Controller	To do Data Wipe in 9124 AP from 9800-CL Controller UI and CLI and Check for Data sanitization logs from AP console	Passed	
EWLCJ1713S_Reg_473	Do Data Wipe in 9164 AP from 9800-CL Controller	To do Data Wipe in 9164 AP from 9800-CL Controller UI and CLI and Check for Data sanitization logs from AP console	Passed	
EWLCJ1713S_Reg_474	Do Data Wipe in 9166 AP from 9800-CL Controller	To do Data Wipe in 9166 AP from 9800-CL Controller UI and CLI and Check for Data sanitization logs from AP console	Passed	
EWLCJ1713S_Reg_475	Do Data Wipe in 4800 AP from 9800-CL Controller	To do Data Wipe in 4800 AP from 9800-CL Controller UI and CLI and Check for Data sanitization logs from AP console	Passed	
EWLCJ1713S_Reg_476	Do Data Wipe in 9120 AP from 9800-80 Controller	To do Data Wipe in 9120 AP from 9800-80 Controller UI and CLI and Check for Data sanitization logs from AP console	Passed	

EWLCJ1713S_Reg_477	Do Data Wipe in 9130 AP from 9800-80 Controller	To do Data Wipe in 9130 AP from 9800-80 Controller UI and CLI and Check for Data sanitization logs from AP console	Passed	
EWLCJ1713S_Reg_478	Do Data Wipe in 9115 AP from 9800-80 Controller	To do Data Wipe in 9115 AP from 9800-80 Controller UI and CLI and Check for Data sanitization logs from AP console	Passed	
EWLCJ1713S_Reg_479	Do Data Wipe in 9105 AP from 9800-80 Controller	To do Data Wipe in 9105 AP from 9800-80 Controller UI and CLI and Check for Data sanitization logs from AP console	Passed	
EWLCJ1713S_Reg_480	Do Data Wipe in 9124 AP from 9800-80 Controller	To do Data Wipe in 9124 AP from 9800-80 Controller UI and CLI and Check for Data sanitization logs from AP console	Passed	
EWLCJ1713S_Reg_481	Do Data Wipe in 9164 AP from 9800-80 Controller	To do Data Wipe in 9164 AP from 9800-80 Controller UI and CLI and Check for Data sanitization logs from AP console	Passed	
EWLCJ1713S_Reg_482	Do Data Wipe in 9166 AP from 9800-80 Controller	To do Data Wipe in 9166 AP from 9800-80 Controller UI and CLI and Check for Data sanitization logs from AP console	Passed	

EWLCJ1713S_Reg_483	Do Data Wipe in 4800 AP from 9800-80 Controller	To do Data Wipe in 4800 AP from 9800-80 Controller UI and CLI and Check for Data sanitization logs from AP console	Passed	
EWLCJ1713S_Reg_484	Do Data wipe from 9120 AP console	To do Data wipe from 9120 AP console and check for Data sanitization logs	Passed	
EWLCJ1713S_Reg_485	Do Data wipe from 9130 AP console	To do Data wipe from 9130 AP console and check for Data sanitization logs	Passed	
EWLCJ1713S_Reg_486	Do Data wipe from 9115 AP console	To do Data wipe from 9115 AP console and check for Data sanitization logs	Passed	
EWLCJ1713S_Reg_487	Do Data wipe from 9105 AP console	To do Data wipe from 9105 AP console and check for Data sanitization logs	Passed	
EWLCJ1713S_Reg_488	Do Data wipe from 9124 AP console	To do Data wipe from 9124 AP console and check for Data sanitization logs	Passed	
EWLCJ1713S_Reg_489	Do Data wipe from 9164 AP console	To do Data wipe from 9164 AP console and check for Data sanitization logs	Passed	
EWLCJ1713S_Reg_490	Do Data wipe from 9166 AP console	To do Data wipe from 9166 AP console and check for Data sanitization logs	Passed	
EWLCJ1713S_Reg_491	Do Data wipe in 9120 AP with mode reset button	To do Data wipe in 9120 AP with help of mode reset button and check for Data sanitization logs	Passed	

EWLCJ1713S_Reg_492	Do Data wipe in 9130 AP with mode reset button	To do Data wipe in 9130 AP with help of mode reset button and check for Data sanitization logs	Passed	
EWLCJ1713S_Reg_493	Do Data wipe in 9115 AP with mode reset button	To do Data wipe in 9115 AP with help of mode reset button and check for Data sanitization logs	Passed	
EWLCJ1713S_Reg_494	Do Data wipe in 9105 AP with mode reset button	To do Data wipe in 9105 AP with help of mode reset button and check for Data sanitization logs	Passed	
EWLCJ1713S_Reg_495	Do Data wipe in 9124 AP with mode reset button	To do Data wipe in 9124 AP with help of mode reset button and check for Data sanitization logs	Passed	
EWLCJ1713S_Reg_496	Do Data wipe in 9164 AP with mode reset button	To do Data wipe in 9164 AP with help of mode reset button and check for Data sanitization logs	Passed	
EWLCJ1713S_Reg_497	Do Data wipe in 9166 AP with mode reset button	To do Data wipe in 9166 AP with help of mode reset button and check for Data sanitization logs	Passed	
EWLCJ1713S_Reg_498	Do Data wipe in 4800 AP with mode reset button	To do Data wipe in 4800 AP with help of mode reset button and check for Data sanitization logs	Passed	
EWLCJ1713S_Reg_499	Do Data wipe several times on single AP	To do Data wipe several times in a single AP and check for Data sanitization logs	Passed	
EWLCJ1713S_Reg_500	Do Data Wipe when AP connected to Windows Client	To do Data Wipe when AP connected to Windows Client	Passed	
EWLCJ1713S_Reg_501	Do Data Wipe when AP connected to Android Client	To do Data Wipe when AP connected to Android Client	Passed	

EWLCJ1713S_Reg_502	Do Data Wipe when AP connected to Mac Client	To do Data Wipe when AP connected to Mac Client	Passed	
EWLCJ1713S_Reg_503	Do Data Wipe when AP connected to Surface Client	To do Data Wipe when AP connected to Surface Client	Passed	
EWLCJ1713S_Reg_504	Do Data Wipe when AP connected to iOS Client	To do Data Wipe when AP connected to iOS Client	Passed	

## To share Client Delete reason code at AP to controller

Logical ID	Title	Description	Status	Defect ID
EWLCJ1713S_Reg_1	Verify Client delete reason code for Webauth timer expiry when AP is in Local mode	LWA webauth timer expire	Passed	
EWLCJ1713S_Reg_2	Verify Client delete reason code for Webauth timer expiry when AP is in Flex mode	LWA webauth timer expire	Passed	
EWLCJ1713S_Reg_3	Verify Client delete reason code for Mac filtering	MAB authentication failed for Wireless client	Passed	
EWLCJ1713S_Reg_4	Verify Client delete reason code for Mac filtering when AP is in Flex mode	MAB authentication failed for Wireless client	Passed	
EWLCJ1713S_Reg_5	Verify Client delete reason code for Wrong PSK	To verify Client delete reason code for Wrong PSK	Passed	CSCwh55281
EWLCJ1713S_Reg_6	Verify Client delete reason code for Wrong PSK when AP is in Flex mode	To verify Client delete reason code for Wrong PSK	Passed	
EWLCJ1713S_Reg_7	Verify Client delete reason code for dot1x timer expired	Deleting the client due to the expiry dot1x timer	Passed	
EWLCJ1713S_Reg_8	Verify Client Manually Excluded with reason code	To verify Client Manually Excluded with reason code	Passed	
EWLCJ1713S_Reg_9	Verify Client delete reason code for VLAN mismatch	To verify Client delete reason code for VLAN mismatch	Passed	
EWLCJ1713S_Reg_10	Verify Android client delete reason code for dot1x authentication failure	Deleting the Android client due to the dot1x authentication failure	Passed	



EWLCJ1713S_Reg_11	Verify Windows client delete reason code for dot1x authentication failure	Deleting the Windows client due to dot1x authentication failure	Passed	
EWLCJ1713S_Reg_12	Verify IOS client delete reason code for dot1x authentication failure	Deleting the IOS client due to dot1x authentication failure	Passed	
EWLCJ1713S_Reg_13	Verify Surface client delete reason code for dot1x authentication failure	Deleting the Surface client due to dot1x authentication failure	Passed	
EWLCJ1713S_Reg_14	Verify client delete reason code for dot1x authentication failure when AP is in Flex mode	Deleting the client due to dot1x authentication failure	Passed	
EWLCJ1713S_Reg_15	Verify syslog when client connected with run state	To verify syslog when client connected with run state	Passed	
EWLCJ1713S_Reg_16	Verify Client delete reason code for IP learn state	To verify Client delete reason code for IP learn state	Passed	
EWLCJ1713S_Reg_17	Checking the client delete reason when Client using wrong bssid while associating	To check the client delete reason when client using wrong BSSID while associating	Passed	
EWLCJ1713S_Reg_18	Configure Roaming between controllers and verify client delete reason	To configure Roaming between controllers and verify client delete reason	Passed	
EWLCJ1713S_Reg_19	Verify Client delete reason CO_CLIENT_DELETE_REASON_MN_AP_FLEX_FT_FAILURE due to FT roaming failure	To verify Client delete reason due to FT roaming failure	Passed	

EWLCJ1713S_Reg_20	Using DNAC verify Client delete reason CO_CLIENT_DELETE_REASON_MN_AP_CLSM_WEBAUTH_TIMER_EXPIRED	Using DNAC, to verify Client delete reason CO_CLIENT_DELETE_REASON_MN_AP_CLSM_WEBAUTH_TIMER_EXPIRED	Passed	
EWLCJ1713S_Reg_21	Verify Client delete reason CO_CLIENT_DELETE_REASON_MN_AP_IPLEARN_TIMEOUT	Client failed to get IP within this period	Passed	
EWLCJ1713S_Reg_22	Verify Client delete reason code for Wired LAN	Deleting the clients connected to a port	Passed	
EWLCJ1713S_Reg_23	Check ip address assignment for clients	To Check ip address assignment for clients	Passed	
EWLCJ1713S_Reg_24	The Client is Manually Removed from the Network	To check The Client is Manually Removed from the Network	Passed	
EWLCJ1713S_Reg_25	Access Control List (ACL) Sent by RADIUS does not Exist on 9800 WLC for client delete reason	To check Access Control List (ACL) Sent by RADIUS does not Exist on 9800 WLC	Passed	CSCwh69621
EWLCJ1713S_Reg_26	Client delete due to AP Radio Reset	To check Client delete due to AP Radio Reset	Passed	
EWLCJ1713S_Reg_27	Client delete due to Idle Timeout	To check Client delete due to Idle Timeout	Passed	

## Ultra Low End 9800-CL

Logical ID	Title	Description	Status	Defect ID
EWLCJ1713S_Reg_571	Installing 9800-CL Ultra low	To Check Whether the 9800-CL ultra low can be installed and able to access without any issues	Passed	
EWLCJ1713S_Reg_572	Check the Device type in Dashboard UI and CLI and Navigate to all available pages and tabs	To Check whether the Device type, Max AP allowed, Max Client allowed details are shown correctly in UI and CLI or not and To Navigate and check whether all the available pages and tabs are working properly or not	Passed	
EWLCJ1713S_Reg_573	Verify CPU, memory & CPP related stats via CLI	To verify CPU, memory & CPP related stats via CLI	Passed	
EWLCJ1713S_Reg_574	Join Access Points and Check the AP status	To Join Access Points to 9800-CL ultra-low and check whether the Access Point are joined or not	Passed	
EWLCJ1713S_Reg_575	Configure wlan, tags, policy profiles, ap join profile from UI	To check whether we are able to create wlan, tags, policy profiles, ap join profiles configs from UI without any issues	Passed	
EWLCJ1713S_Reg_576	Configure wlan, tags, policy profiles, ap join profile from CLI	To check whether we are able to create wlan, tags, policy profiles, ap join profiles configs from CLI without any issues	Passed	

EWLCJ1713S_Reg_577	Check client connectivity with wp2+psk wlan	To check Client Connectivity in ultra low with wpa2+psk wlan	Passed	
EWLCJ1713S_Reg_578	Check client connectivity with wp2+802.1x wlan	To check Client Connectivity in ultra low with wpa2+802.1x wlan	Passed	
EWLCJ1713S_Reg_579	Check client connectivity with wp3+sae wlan	To check Client Connectivity in ultra low with wpa3+sae wlan	Passed	
EWLCJ1713S_Reg_580	Check client connectivity with wp3+802.1x wlan	To check Client Connectivity in ultra low with wpa3+802.1x wlan	Passed	
EWLCJ1713S_Reg_581	Check client connectivity with open security wlan	To check Client Connectivity in ultra low with open security wlan	Passed	
EWLCJ1713S_Reg_582	Connect client in 2.4GHz radio	To check Whether clients are able to join in 2.4GHz radio	Passed	
EWLCJ1713S_Reg_583	Connect client in 5GHz radio	To check Whether clients are able to join in 5GHz radio	Passed	
EWLCJ1713S_Reg_584	Connect client in 6GHz radio	To check Whether clients are able to join in 6GHz radio	Passed	
EWLCJ1713S_Reg_585	Client Connectivity with Windows client	To check client connectivity with Windows client with all Security wlan	Passed	
EWLCJ1713S_Reg_586	Client Connectivity with MAC client	To check client connectivity with MAC client with all Security wlan	Passed	
EWLCJ1713S_Reg_587	Client Connectivity with Android client	To check client connectivity with Android client with all Security wlan	Passed	

EWLCJ1713S_Reg_588	Client Connectivity with IOS client	To check client connectivity with IOS client with all Security wlan	Passed	
EWLCJ1713S_Reg_589	Client Connectivity with Surface client	To check client connectivity with Surface client with all Security wlan	Passed	
EWLCJ1713S_Reg_590	Roam the clients between Aps	To roam the client between APs of 9800-CL ultra low	Passed	
EWLCJ1713S_Reg_591	Roam the clients between different controllers	To roam the client between 9800-CL ultra low and other controller and verify client details	Passed	
EWLCJ1713S_Reg_592	Do Reload and check Controller Behaviour	To Reboot the controller and check whether the controller is acting normal after reload	Passed	
EWLCJ1713S_Reg_593	Do Upgrade, downgrade and check the controller Behaviour	To do upgrade and downgrade in controller and check whether the Controller is acting normal or not	Passed	
EWLCJ1713S_Reg_594	Upgrading controller by all possible ways	To Upgrade the controller by desktop mode, ftp mode, tftp mode and check whether all modes are working fine and controller comes up as normal	Passed	
EWLCJ1713S_Reg_595	Rollback controller and check controller behaviour	To rollback the controller to previous committed image and check whether the controller comes up as normal	Passed	

EWLCJ1713S_Reg_596	Check controller behaviour after adding and configured from DNAC	To Connect the controller with DNAC and provision with some config changes from DNAC and check the behaviour of the controller	Passed	
EWLCJ1713S_Reg_597	Connect multiple client to the controller and check the memory, CPU usages	To Connect multiple client to the controller and check the memory, CPU usages	Passed	

## WLC: Improve Embedded Packet Capture (EPC)

Logical ID	Title	Description	Status	Defect ID
EWLCJ1713S_Reg_638	Execute all debug commands for EPC	To execute all debug commands for EPC	Passed	
EWLCJ1713S_Reg_639	Configure with buffer file, check EPC buffer file created or not	To configure with buffer file, check EPC buffer file created or not	Passed	
EWLCJ1713S_Reg_640	Configure with buffer file which size is more the free size of the local file system	To check if there is warning message and start failed	Passed	
EWLCJ1713S_Reg_641	Configure with buffer file with liner and circular type, check capturing packet	To configure with buffer file with liner and circular type, to check capturing packet	Passed	
EWLCJ1713S_Reg_642	Configure buffer files and change to memory	To check by show command and re-start epc capture the buffer should be re-init	Passed	
EWLCJ1713S_Reg_643	Configure memory and change to buffer files	To check by show command and re-start epc capture the memory should be re-init	Passed	
EWLCJ1713S_Reg_644	Configure buffer files and re-configure the file number/ file size	To reconfigure the file number/file size	Passed	
EWLCJ1713S_Reg_645	Configure with buffer file and no EPC session	To check epc delete successfully and buffer files deleted	Passed	
EWLCJ1713S_Reg_646	Configure with buffer file and show buffer Command	To show monitor capture buffer [brief   dump]	Passed	

EWLCJ1713S_Reg_647	Configure with buffer file and export buffer, and the total files size > 100 MB	To configure with buffer file and export buffer, and the total files size > 100 MB	Passed	
EWLCJ1713S_Reg_648	Configure with buffer file, total files size< 100MB	To configure with buffer file, total files size< 100MB	Passed	
EWLCJ1713S_Reg_649	Configure with memory and export	To configure with memory and export	Passed	
EWLCJ1713S_Reg_650	Configure with buffer file and export to local path	To configure with buffer file and export to local path	Passed	
EWLCJ1713S_Reg_651	Configure with buffer file and clear epc buffer	To check buffer by show command	Passed	
EWLCJ1713S_Reg_652	Configure continuous export	To configure continuous export	Passed	
EWLCJ1713S_Reg_653	Configure continuous export and memory buffer and start session	To check packet export before buffer exported	Passed	
EWLCJ1713S_Reg_654	Configure continuous export and memory buffer and stop session	To check the rest of packets in the buffer exported	Passed	
EWLCJ1713S_Reg_655	Configure continuous export and file buffer and start session	To check the packets exported	Passed	
EWLCJ1713S_Reg_656	Configure continuous export and file buffer and stop session	To check rest of the packets exported	Passed	
EWLCJ1713S_Reg_657	Configure filter one inner mac and show pd command and capture packets	To send traffic and verify the traffic with inner mac is captured	Passed	
EWLCJ1713S_Reg_658	Configure filter multiple inner mac addresses and capture packets	To configure filter multiple inner mac addresses and capture packets	Passed	



EWLCJ1713S_Reg_659	Configure no filter inner mac in one line and show epc	To capture the packet for Mac Client connectivity.	Passed	
EWLCJ1713S_Reg_660	Connect Windows client and capture packet	To connect Windows client and capture packet	Passed	
EWLCJ1713S_Reg_661	Connect Android client and capture packet	To connect Android client and capture packet	Passed	
EWLCJ1713S_Reg_662	Connect MAC client and capture packet	To connect MAC client and capture packet	Passed	
EWLCJ1713S_Reg_663	Connect IOS client and capture packet	To connect IOS client and capture packet	Passed	
EWLCJ1713S_Reg_664	Connect Go Plus client and capture packet	To connect Go Plus client and capture packet	Passed	
EWLCJ1713S_Reg_665	Join Wi-Fi 6E 9164 AP, connect capable clients and capture packets	To connect WiFi-6E capable client and capture packets	Passed	
EWLCJ1713S_Reg_666	Join Wi-Fi 6E 9166 AP, connect capable clients and capture packets	To connect WiFi-6E capable client and capture packets	Passed	

## WPA3 SAE client exclusion optimization for local mode

Logical ID	Title	Description	Status	Defect ID
EWLCJ1713S_Reg_408	Configure SAE using CLI	To Configure SAE using CLI	Passed	
EWLCJ1713S_Reg_409	Configure/enable SAE in WPA3 UI page	To configure/enable SAE in WPA3 UI page	Passed	
EWLCJ1713S_Reg_410	Verify enabling 802.1x and SAE together FT is disabled	To verify enabling 802.1x and SAE together FT is disabled	Passed	
EWLCJ1713S_Reg_411	Verify weather the client connected	To verify weather the client connected	Passed	
EWLCJ1713S_Reg_412	Verify the client connected with wrong psk	To verify the client is connected to wrong psk	Passed	
EWLCJ1713S_Reg_413	Check the client connected to wrong psk in 4 times	To check the client connected to wrong psk in 4 times	Passed	
EWLCJ1713S_Reg_414	Check the client is excluded after giving wrong psk multiple times	To check the client excluded after giving wrong psk with multiple times	Passed	
EWLCJ1713S_Reg_415	check the client is connected successfully	To check the client is connected successfully	Passed	
EWLCJ1713S_Reg_416	verify the logs are generated while connecting the client	To verify the logs are generated while connecting the client	Passed	
EWLCJ1713S_Reg_417	Monitor the client is connected	To monitor the client is connected	Passed	

# SRCFD

Logical ID	Title	Description	Status	Defect ID
EWLCJ1713S_SR_1	Verify any crashes generated for 9105 AP while configuring radio role	To verify any crashes generated for 9105 AP	Passed	
EWLCJ1713S_SR_2	Verify any crashes generated for 9115 AP while configuring radio role	To verify any crashes generated for 9115 AP	Passed	
EWLCJ1713S_SR_3	Verify any crashes generated for 9120 AP while configuring radio role	To verify any crashes generated for 9120 AP	Passed	
EWLCJ1713S_SR_4	Verify any crashes generated for 9130 AP while configuring radio role	To verify any crashes generated for 9130 AP	Passed	
EWLCJ1713S_SR_5	Connect 9120 AP with Sniffer mode	To connect 9120 AP with sniffer mode and connect with client device	Passed	
EWLCJ1713S_SR_6	Connect 9120 AP with Local mode	To connect 9120 AP with local mode and connect with client device	Passed	
EWLCJ1713S_SR_7	Connect 5 Ghz with 9130 Ap	To connect 5 Ghz with 9130 Ap and connect with client	Passed	
EWLCJ1713S_SR_8	Check 9120 radio firmware reloads unexpectedly	Check 9120 radio firmware reloads unexpectedly	Passed	
EWLCJ1713S_SR_9	Check 9115 radio firmware reloads	Check 9115 radio firmware reloads unexpectedly	Passed	
EWLCJ1713S_SR_10	Troubleshoot 9105 radio firmware	to Check 9105 radio firmware	Passed	

EWLCJ1713S_SR_11	check The radio or network is configured shut	To check The radio or network is configured shut	Passed	
EWLCJ1713S_SR_12	Resetting the radio to see if that restarts the radio	To reset the radio to see if that restarts the radio	Passed	
EWLCJ1713S_SR_13	Upgrade the 9105 AP with latest image	Verify core file generated or not while image upgrade	Passed	
EWLCJ1713S_SR_14	Upgrade the 9120 AP with latest image	Verify core file generated or not while image upgrade	Passed	
EWLCJ1713S_SR_15	Upgrade the 9130 AP with latest image	Verify core file generated or not while image upgrade	Passed	
EWLCJ1713S_SR_16	Upgrade the 9164 AP with latest image	Verify core file generated or not while image upgrade	Passed	
EWLCJ1713S_SR_17	Upgrade the 9166 AP with latest image	Verify core file generated or not while image upgrade	Passed	
EWLCJ1713S_SR_18	Configure SIP-5-License in 9800-L controller	To configure SIP-5-License in 9800-L controller AIR Network License	Passed	
EWLCJ1713S_SR_19	Configure SIP-5-License in 9800-CL controller	To configure SIP-5-License in 9800-CL controller AIR Network License	Passed	
EWLCJ1713S_SR_20	Configure SIP-5-License in 9800-40 controller	To configure SIP-5-License in 9800-40 controller AIR Network License	Passed	
EWLCJ1713S_SR_21	Configure SIP-5-License in 9800-80 controller	To configure SIP-5-License in 9800-80 controller AIR Network License	Passed	

EWLCJ1713S_SR_22	Do image upgrade to 9800-L controller	To do image upgrade to 9800-L controller and check for any crash or message flooding	Passed	
EWLCJ1713S_SR_23	Do image upgrade to 9800-80 controller	To do image upgrade to 9800-80 controller and check for any crash or message flooding	Passed	
EWLCJ1713S_SR_24	Do image upgrade to 9800-CL controller	To do image upgrade to 9800-CL controller and check for any crash or message flooding	Passed	
EWLCJ1713S_SR_25	Do image upgrade to 9800-CL-Ultralow controller	To do image upgrade to 9800-CL-Ultralow controller and check for any crash or message flooding	Passed	
EWLCJ1713S_SR_26	Verify VRF connected or not	To verify VRF connected or not	Passed	
EWLCJ1713S_SR_27	Configuring , VRF commands in cli disabled	To configure , VRF commands in cli disabled	Passed	
EWLCJ1713S_SR_28	Configuring VRF and Layer3	To configure VRF and Layer 3 in eWLC	Passed	
EWLCJ1713S_SR_29	Verify VRF deleted or not	To verify VRF deleted or not	Passed	
EWLCJ1713S_SR_30	Roam 9105 AP from one controller to another controller	To roam 9105 AP from one controller to another controller and check the RTS Threshold in each controller	Passed	
EWLCJ1713S_SR_31	Roam 9115 AP from one controller to another controller	To roam 9115 AP from one controller to another controller and check the RTS Threshold in each controller	Passed	

EWLCJ1713S_SR_32	Roam 9120 AP from one controller to another controller	To roam 9120 AP from one controller to another controller and check the RTS Threshold in each controller	Passed	
EWLCJ1713S_SR_33	Roam 9130 AP from one controller to another controller	To roam 9130 AP from one controller to another controller and check the RTS Threshold in each controller	Passed	
EWLCJ1713S_SR_34	Roam 9124 AP from one controller to another controller	To roam 9124 AP from one controller to another controller and check the RTS Threshold in each controller	Passed	
EWLCJ1713S_SR_35	Roam 9164 AP from one controller to another controller	To roam 9164 AP from one controller to another controller and check the RTS Threshold in each controller	Passed	
EWLCJ1713S_SR_36	Roam 9166 AP from one controller to another controller	To roam 9166 AP from one controller to another controller and check the RTS Threshold in each controller	Passed	
EWLCJ1713S_SR_37	Configuring client connected to the controller	To verify Turn on consent with disable in web auth parameter	Passed	
EWLCJ1713S_SR_38	Configuring client connected to the controller in 9105 AP	To configure client connected to the controller in 9105 AP	Passed	
EWLCJ1713S_SR_39	Configuring client connected to the controller in 9115 AP	To configure client connected to the controller in 9115 AP	Passed	
EWLCJ1713S_SR_40	Configuring client connected to the controller in 9120 AP	To configure client connected to the controller in 9120 AP	Passed	

EWLCJ1713S_SR_41	Performing Inter controller roaming of Android client	To check whether inter controller roaming of Android clients works properly or not	Passed	
EWLCJ1713S_SR_42	Performing Inter controller roaming of IOS client	To check whether inter controller roaming of IOS clients works properly or not	Passed	
EWLCJ1713S_SR_43	Performing Inter controller roaming of Mac OS client	To check whether inter controller roaming of Mac OS clients works properly or not	Passed	
EWLCJ1713S_SR_44	Reloading the 9164 AP repeated times	To check and reloading 9164 AP repeatedly	Passed	
EWLCJ1713S_SR_45	Reloading the 9166 AP repeated times	To check and reloading 9166 AP repeatedly	Passed	
EWLCJ1713S_SR_46	Reloading the 9124 AP repeated times	To check and reloading 9124 AP repeatedly	Passed	
EWLCJ1713S_SR_47	Reloading the 9105 AP repeated times	To check and reloading 9105 AP repeatedly	Passed	
EWLCJ1713S_SR_48	Upgrade 9105AP joined eWLC	To check any crashes/Kernal panic generated or not after upgrade	Passed	
EWLCJ1713S_SR_49	Upgrade 9115AP joined eWLC	To check any crashes/Kernal panic generated or not after upgrade	Passed	
EWLCJ1713S_SR_50	Upgrade 9120AP joined eWLC	To check any crashes/Kernal panic generated or not after upgrade	Passed	
EWLCJ1713S_SR_51	Upgrade 9130AP joined eWLC	To check any crashes/Kernal panic generated or not after upgrade	Passed	

EWLCJ1713S_SR_52	Configure SNMPv2 on Cat 9800 WLC	To Check Configuration of SNMPv2 on Cat 9800 WLC	Passed	
EWLCJ1713S_SR_53	Configure SNMP V3 User Groups on Cat 9800 WLC	To Check Configuration of SNMP V3 User Groups on Cat 9800 WLC	Passed	
EWLCJ1713S_SR_54	Configure SNMP V3 User on Cat 9800 WLC	To Check Configuration of SNMP V3 User on Cat 9800 WLC	Passed	
EWLCJ1713S_SR_55	Configure and Enable SNMP traps on Cat 9800 WLC	To enable SNMP traps on Cat 9800 WLC	Passed	
EWLCJ1713S_SR_56	Verify EWC boot up with HA enabled	To verify EWC boot up with HA enabled	Passed	
EWLCJ1713S_SR_57	Upgrade AP to different image and check if it comes up without crash	To upgrade AP to different image and check if it comes up without crash	Passed	
EWLCJ1713S_SR_58	Check if standby EWC comes up on active failover	To check if standby EWC comes up on active failover	Passed	
EWLCJ1713S_SR_59	Check able to upgrade eWLC 17.13 from 17.12	To check able to upgrade eWLC device from 17.12 to 17.13	Passed	
EWLCJ1713S_SR_60	Check able to downgrade eWLC 17.12 from 17.13	To check able to downgrade eWLC device from 17.13 to 17.12	Passed	
EWLCJ1713S_SR_61	Check while upgrading Memory status	To check while upgrading memory status	Passed	
EWLCJ1713S_SR_62	Check while downgrading Memory status	To check while downgrading Memory status	Passed	
EWLCJ1713S_SR_63	Configuring webauth for guest wlan	To configure webauth for guest wlan	Passed	



EWLCJ1713S_SR_64	Configuring web auth parameter turn on consent with email	To check any crashes generated after create turn on consent with email	Passed	
EWLCJ1713S_SR_65	Configuring clients connect wlan , email address is required	To check whether client connect wlan , email address is required	Passed	
EWLCJ1713S_SR_66	Configuring web auth parameter, turn on consent with email	To verify Turn on consent with enable in web auth parameter	Passed	
EWLCJ1713S_SR_67	Configuring XOR Radio Support for the Specified Slot Number 2800 AP	To verify any core dumps generated or not for the specified Slot number	Passed	
EWLCJ1713S_SR_68	Configuring XOR Radio Support for the Specified Slot Number 3800 AP	To verify any core dumps generated or not for the specified Slot number	Passed	
EWLCJ1713S_SR_69	Configuring 2.4-GHz Radio Support for the Specified Slot Number 2800 AP	To verify any core dumps generated or not for the specified Slot number	Passed	
EWLCJ1713S_SR_70	Configuring 2.4-GHz Radio Support for the Specified Slot Number 3800 AP	To verify any core dumps generated or not for the specified Slot number	Passed	
EWLCJ1713S_SR_71	Configuring 5-GHz Radio Support for the Specified Slot Number 2800 AP	To verify any core dumps generated or not for the specified Slot number	Passed	
EWLCJ1713S_SR_72	Configuring 5-GHz Radio Support for the Specified Slot Number 3800 AP	To verify any core dumps generated or not for the specified Slot number	Passed	
EWLCJ1713S_SR_73	Check 9120 radio firmware reloads unexpectedly	Check 9120 radio firmware reloads unexpectedly	Passed	
EWLCJ1713S_SR_74	Check 9115 radio firmware reloads	Check 9115 radio firmware reloads unexpectedly	Passed	

EWLCJ1713S_SR_75	Troubleshoot 9105 radio firmware	To Check 9105 radio firmware	Passed	
EWLCJ1713S_SR_76	check The radio or network is configured shut	To check The radio or network is configured shut	Passed	
EWLCJ1713S_SR_77	Resetting the radio to see if that restarts the radio	To reset the radio to see if that restarts the radio	Passed	
EWLCJ1713S_SR_78	Verifying OBSS PD enabled with Intra client roaming by using 9115AP	To verify whether OBSS PD enabled with client roaming between AP's or not	Passed	
EWLCJ1713S_SR_79	Changing 9115 AP mode from local to Flex connect & check the BSS coloring Configuration	To change the mode of AP from local mode to Flexconnect mode and check the BSS coloring configuration in 9115 Ap	Passed	
EWLCJ1713S_SR_80	Changing 9115 AP mode from flex to local & check the BSS coloring Configuration	To change the mode of AP from flex mode to local mode and check the BSS coloring configuration in 9115 Ap	Passed	
EWLCJ1713S_SR_81	When AP changes from one mode to another mode	To verify when AP changes from one mode to another mode	Passed	
EWLCJ1713S_SR_82	Check whether the APs reloads in Firmware/Software Updates in GUI	To check whether the APs reloads in Firmware/Software Updates in GUI	Passed	
EWLCJ1713S_SR_83	The Reboot of AP	To check and verify Reboot of AP	Passed	
EWLCJ1713S_SR_84	Downgrade and Upgrade the controller with latest image	To verify Downgrade and Upgrade the controller with latest image	Passed	
EWLCJ1713S_SR_85	Active chassis might get stuck during the SSO failover on 17.9	To verify HA SSO RMI behaviour on force-switchover.	Passed	

EWLCJ1713S_SR_86	Active chassis might get stuck during the SSO failover on 17.9	To force multiple switchover after upgrade to check if RMI link is up or not	Passed	
EWLCJ1713S_SR_87	Active chassis might get stuck during the SSO failover on 17.9	To verify HA SSO RMI by increasing traffic on force-switchover.	Passed	
EWLCJ1713S_SR_88	Active chassis might get stuck during the SSO failover on 17.9	To verify HA SSO RMI by using RA trace logs on force-switchover.	Passed	
EWLCJ1713S_SR_89	Active chassis might get stuck during the SSO failover on 17.9	To Monitor health HA SSO RMI behaviour on stand by unit.	Passed	
EWLCJ1713S_SR_90	Verify whether able send Beacon frames for 9105AP or not	To check Beacon messages are sending from 9105AP	Passed	
EWLCJ1713S_SR_91	Verify whether able send Beacon frames for 9115AP or not	To check Beacon messages are sending from 9115AP	Passed	
EWLCJ1713S_SR_92	Verify whether able send Beacon frames for 9120AP or not	To check Beacon messages are sending from 9120AP	Passed	
EWLCJ1713S_SR_93	Verify whether able to send Beacon frames for C9105, C9115, or C9120 AP or not with different securities	To check Beacon messages are sending from 9115AP, 9120AP, 9105AP, 9130AP	Passed	
EWLCJ1713S_SR_94	Check EAP-TLS packet capture using 9120 AP	To check EAP-TLS packet capture using 9130 AP	Passed	
EWLCJ1713S_SR_95	Check EAP-TLS packet capture using 9166 AP	To check EAP-TLS packet capture using 9166 AP	Passed	
EWLCJ1713S_SR_96	Check EAP-TLS packet capture using 9164 AP	To check EAP-TLS packet capture using 9164 AP	Passed	

EWLCJ1713S_SR_97	Check EAP-TLS packet capture using 9115 AP	To check EAP-TLS packet capture using 9115 AP	Passed	
EWLCJ1713S_SR_98	Client Connectivity with Windows client	To check client connectivity with Windows client with all Security wlan	Passed	
EWLCJ1713S_SR_99	Client Connectivity with MAC client	To check client connectivity with MAC client with all Security wlan	Passed	
EWLCJ1713S_SR_100	Client Connectivity with Android client	To check client connectivity with Android client with all Security wlan	Passed	
EWLCJ1713S_SR_101	Client Connectivity with IOS client	To check client connectivity with IOS client with all Security wlan	Passed	
EWLCJ1713S_SR_102	connecting a windows client to 9105 AP in eWLC with dot1x authentication	to check if any AP in eWLC is connected to windows client with 802.1X authentication	Passed	
EWLCJ1713S_SR_103	connecting a Android client to 9105 AP in eWLC with dot1x authentication	to check if any AP in eWLC is connected to android client with 802.1X authentication	Passed	
EWLCJ1713S_SR_104	connecting a windows client to 9120 AP with dot1x authentication	to check if 9120 AP in eWLC is connected to windows client with 802.1X authentication	Passed	
EWLCJ1713S_SR_105	connecting a android client to 9120 AP with dot1x authentication	to check if 9120 AP in eWLC is connected to android client with 802.1X authentication	Passed	

EWLCJ1713S_SR_106	2.4 ghz RF channel assignment Global to custom for C9130AP	To change the 2.4 ghz RF channel assignment Global to custom for C9130AP	Passed	
EWLCJ1713S_SR_107	5 ghz RF channel assignment Global to custom for C9130AP	To change the 5 ghz RF channel assignment Global to custom for C9130AP	Passed	
EWLCJ1713S_SR_108	Connect 9130 AP in 9800-L controller and change radios	To connect 9130 AP in 9800-L controller and change radios	Passed	
EWLCJ1713S_SR_109	Connect 9130 AP in 9800-80 controller and change radios	To connect 9130 AP in 9800-80 controller and change radios	Passed	
EWLCJ1713S_SR_110	check if it's able to show the port speed and duplex for 10 Mbps on CLI	to check if it's able to show the port speed and duplex for 10 Mbps on CLI	Passed	
EWLCJ1713S_SR_111	check if it's able to show the port speed and duplex for 100 Mbps on CLI	to check if it's able to show the port speed and duplex for 100 Mbps on CLI	Passed	
EWLCJ1713S_SR_112	check if it's able to show the port speed and duplex for 1000 Mbps on CLI	to check if it's able to show the port speed and duplex for 1000 Mbps on CLI	Passed	
EWLCJ1713S_SR_113	check if it's able to show the err-disabled interface only on CLI	to check if it's able to show the err-disabled interface only on CLI	Passed	
EWLCJ1713S_SR_114	9130 AP connected with multiple client devices	To connect 9130 AP with more client devices	Passed	
EWLCJ1713S_SR_115	9164 AP connected with multiple client devices	To connect 9164 AP with more client devices	Passed	
EWLCJ1713S_SR_116	9164 AP connected with multiple client devices	To connect 9164 AP with more client devices	Passed	

EWLCJ1713S_SR_117	9120 AP with 2.4 Ghz band and connect client	To connect 9120 AP with 2.4 Ghz band and connect client device	Passed	
EWLCJ1713S_SR_118	Restoring of config by http mode from device	To verify Restoring of config by http mode from device	Passed	
EWLCJ1713S_SR_119	Restoring of config by http mode to device	To verify Restoring of config by http mode to device when Backup existing startup config to flash selected as No	Passed	
EWLCJ1713S_SR_120	Restoring of config by http mode to device	To verify Restoring of config by http mode to device when file type selected as (Web Auth Bundle)	Passed	
EWLCJ1713S_SR_121	Connect a windows client to SSID and check the Accounting packets	To connect a windows client to SSID and check the Accounting packets	Passed	
EWLCJ1713S_SR_122	Connect a windows client to SSID and check the Accounting packets	To connect a Android client to SSID and check the Accounting packets in Wireshark	Passed	
EWLCJ1713S_SR_123	Connect a windows client to SSID and check the Accounting packets	To Connect a Surface client to SSID and check the Accounting packets in Wireshark	Passed	
EWLCJ1713S_SR_124	To verify Prime Infrastructure to configure SNMPv2 Configuration, to manage and monitor 9800 controller	SNMPv2 Configuration on 9800 WLC	Passed	
EWLCJ1713S_SR_125	To verify Prime Infrastructure to configure SNMPv3 Configuration, to manage and monitor 9800 controller	SNMPv3 Configuration on 9800 WLC	Passed	

EWLCJ1713S_SR_126	To verify Prime Infrastructure to configure Netconf Configuration, to manage and monitor 9800 controller	Netconf Configuration on 9800 WLC	Passed	
EWLCJ1713S_SR_127	To Verify telemetry status	Verification of telemetry status after PI configuration	Passed	
EWLCJ1713S_SR_128	Check free space in bootflash	To Check free space in bootflash	Passed	
EWLCJ1713S_SR_129	Delete the large-capacity system file	To delete the large-capacity system file	Passed	
EWLCJ1713S_SR_130	C9800-L- F-K9 -PLATFORM-1-NOSPACE: bootflash : no space alarm assert	C9800-L- F-K9 -PLATFORM-1-NOSPACE: bootflash : no space alarm assert	Passed	
EWLCJ1713S_SR_131	Bootflash : no space alarm assert	To delete the unnecessary files to get free space	Passed	
EWLCJ1713S_SR_132	Validate meraki details in location hierarchy	Verify Client connected or not	Passed	
EWLCJ1713S_SR_133	connect windows client with 9130 EWC ap for dot1x security	Verify Client connected or not	Passed	
EWLCJ1713S_SR_134	connect mac client with 9105 EWC ap for dot1x security	Verify Client connected or not	Passed	
EWLCJ1713S_SR_135	To verify clearing entries or not in 9800 WLC.	To check if multiple entries can clearing or not after logout in browser	Passed	
EWLCJ1713S_SR_136	To verify clearing entries or not in 9800 WLC.	To check if 2 entries can clearing or not after logout in browser	Passed	
EWLCJ1713S_SR_137	To verify clearing entries or not in 9800 WLC.	To check if more then the limit(more than 300) entries can try to login	Passed	

EWLCJ1713S_SR_138	Verify whether able to access number of hosts (max 300) simultaneously using GUI	To verifying the Request to limit of 3 hosts	Passed	
EWLCJ1713S_SR_139	Verify whether able to access number of hosts (max 300) simultaneously using GUI	To verifying the Request to limit of 5 hosts	Passed	
EWLCJ1713S_SR_140	Verify whether able to access number of hosts max 300 in CLI	verifying the Request to limit of 300 hosts in controller in CLI or not	Passed	
EWLCJ1713S_SR_141	Configure HA setup for 9800-80	To configure HA setup for 9800-80	Passed	
EWLCJ1713S_SR_142	Switchover HA setup and verify status	To verify HA setup switchover	Passed	
EWLCJ1713S_SR_143	Verify any crashes generated after configuring debug all command	To check any crashes generated or not	Passed	
EWLCJ1713S_SR_144	ISSU upgrade with HA SSO RMI	To perform ISSU upgrade in HA SSO RMI setup and monitor behaviour	Passed	
EWLCJ1713S_SR_145	Associate windows client flex mode and perform roaming	Verify client connected or not with 9105 ap	Passed	
EWLCJ1713S_SR_146	Associate mac client flex mode and perform roaming	Verify crash happened or not during continue reload	Passed	
EWLCJ1713S_SR_147	Associate iOS client flex mode and perform roaming	Verify crash happened or not during client connectivity	Passed	
EWLCJ1713S_SR_148	Check whether able to join a AP to switch & able to connect eWLC	Verify whether AP is generating crash file after joining to eWLC.	Passed	



EWLCJ1713S_SR_149	Check whether able to join a AP after AP reset.	Verify whether AP is generating crash file after AP reset.	Passed	
EWLCJ1713S_SR_150	Verify if AP reloads unexpectedly after upgrade.	To verify if AP reloads unexpectedly after upgrade.	Passed	
EWLCJ1713S_SR_151	Verify any AP crash occurs after Reassociation of client to the AP	To verify any AP crash occurs after Reassociation of client to the AP.	Passed	
EWLCJ1713S_SR_152	Verify if kernel panic error occurs during AP bootup	To verify if hosted process comes up during AP bootup	Passed	
EWLCJ1713S_SR_153	Upgrade AP to different image and check if it comes up without crash	To upgrade AP to different image and check if it comes up without crash	Passed	
EWLCJ1713S_SR_154	Check AP info upon AP factory reset, unplug & connect to switch	To check if AP joins eWLC automatically upon after initial connect, factory reset & unplug with switch	Passed	
EWLCJ1713S_SR_155	Check AP info upon AP unplug & connect to switch for catalyst 9100 AP's	To check if different models of AP join eWLC automatically upon after initial connect & unplug with switch	Passed	
EWLCJ1713S_SR_156	Upgrade the 9130 ap with latest image	Verify core file generated or not while image upgrade	Passed	
EWLCJ1713S_SR_157	Upgrade the 9164 ap with latest image	Verify core file generated or not while image upgrade	Passed	
EWLCJ1713S_SR_158	Upgrade the 9166 ap with latest image	Verify core file generated or not while image upgrade	Passed	
EWLCJ1713S_SR_159	Upgrade the 9105 ap with latest image	Verify core file generated or not while image upgrade	Passed	

EWLCJ1713S_SR_160	Check whether if AP 9105 is crashed or not	To check whether if AP 9105 is crashed if disabled 2.4 ghz only	Passed	
EWLCJ1713S_SR_161	Check whether if AP 9115 is crashed or not	To check whether if AP 9115 is crashed if by disabling 5ghz and 6ghz	Passed	
EWLCJ1713S_SR_162	Check whether if AP 9166 is crashed or not	To check whether if AP 9166 is crashed if enabled 2.4 ghz , 5ghz and disabling 6ghz	Passed	
EWLCJ1713S_SR_163	Check whether if AP 9164 is crashed or not	To check whether if AP 9164 is crashed if enabled 2.4 ghz and 5ghz,disable 6ghz	Passed	
EWLCJ1713S_SR_164	Checking Per AP Model Service Pack for AP 9105	To checking Per AP Model Service Pack for AP 9106	Passed	
EWLCJ1713S_SR_165	Checking Per AP Model Service Pack for AP 9115	To checking Per AP Model Service Pack for AP 9116	Passed	
EWLCJ1713S_SR_166	Checking per AP Model Service Pack for AP 9124	To checking per AP Model Service Pack for AP 9125	Passed	
EWLCJ1713S_SR_167	Checking per AP Model service Pack for AP 9130	To checking per AP Model service Pack for AP 9131	Passed	
EWLCJ1713S_SR_168	Checking per AP Model Service Pack for AP 9164	To checking per AP Model Service Pack for AP 9165	Passed	
EWLCJ1713S_SR_169	Checking Per AP Model Service Pack for AP 9166	To checking Per AP Model Service Pack for AP 9167	Passed	
EWLCJ1713S_SR_170	Do image upgrade on 9105 AP	To do ap image upgrade on 9105 AP to check whether crash is happening or not	Passed	

EWLCJ1713S_SR_171	Do image upgrade on 9115 AP	To do ap image upgrade on 9115 AP to check whether crash is happening or not	Passed	
EWLCJ1713S_SR_172	Do image upgrade on 9120 AP	To do ap image upgrade on 9120 AP to check whether crash is happening or not	Passed	
EWLCJ1713S_SR_173	Do image upgrade on 9130 AP	To do ap image upgrade on 9130 AP to check whether crash is happening or not	Passed	
EWLCJ1713S_SR_174	Do image upgrade on 9124 AP	To do ap image upgrade on 9124 AP to check whether crash is happening or not	Passed	
EWLCJ1713S_SR_175	Do image upgrade on 9164 AP	To do ap image upgrade on 9164 AP to check whether crash is happening or not	Passed	
EWLCJ1713S_SR_176	Do image upgrade on 9166 AP	To do ap image upgrade on 9166 AP to check whether crash is happening or not	Passed	
EWLCJ1713S_SR_177	Check whether able to join a AP to switch & able to connect eWLC	Verify whether AP is CleanAir goes down after joining eWLC.	Passed	
EWLCJ1713S_SR_178	Check whether able to join a AP after AP reset.	Verify whether AP is CleanAir goes down after AP reset.	Passed	
EWLCJ1713S_SR_179	Verify if AP CleanAir goes down after the upgrade.	To verify if AP is CleanAir goes down after the upgrade.	Passed	
EWLCJ1713S_SR_180	Verify any AP is CleanAir goes down after connecting to the client to the AP	To verify any AP is CleanAir goes down after connecting to the client.	Passed	

EWLCJ1713S_SR_181	Check whether 9166 AP join in controller running with latest image or not	To Check whether 9166 AP join in controller running with latest image or not	Passed	
EWLCJ1713S_SR_182	Check whether 9164 AP join in controller running with latest image or not	To Check whether 9164 AP join in controller running with latest image or not	Passed	
EWLCJ1713S_SR_183	Check whether 9130 AP join in controller running with latest image or not	To Check whether 9130 AP join in controller running with latest image or not	Passed	
EWLCJ1713S_SR_184	Check whether 9124 AP join in controller running with latest image or not	To Check whether 9124 AP join in controller running with latest image or not	Passed	
EWLCJ1713S_SR_185	Verify whether able to mac filtering delimiter is working or not	To check mac filtering delimiter is working or not	Passed	
EWLCJ1713S_SR_186	Verify whether able to mac delimiter as ":" is working or not	To check mac filtering by using delimiter as ":" working or not	Passed	
EWLCJ1713S_SR_187	Verify whether able to mac delimiter as "Semi Hyphen" is working or not	To check mac filtering by using delimiter as "Semi-Hyphen" is working or not	Passed	
EWLCJ1713S_SR_188	Verify whether able to mac delimiter as "-" is working or not	To check mac filtering by using delimiter as "-" working or not	Passed	
EWLCJ1713S_SR_189	Verify radio crash happens or not	To verify any radio crash happens or not	Passed	
EWLCJ1713S_SR_190	Connect windows client with flex mode	To connect windows client with flex mode	Passed	
EWLCJ1713S_SR_191	Connect windows client with Local mode	To connect windows client with Local mode	Passed	

EWLCJ1713S_SR_192	Verify windows client is able to associate properly or not after roaming	To verify any issues happens after roaming	Passed	
-------------------	--	--	--------	--





## Related Documents

---

- [Related Documentation, on page 178](#)

## Related Documentation

### **Cisco Catalyst 9800 Series Wireless Controller Software Configuration Guide**

[https://www.cisco.com/c/en/us/td/docs/wireless/controller/9800/17-13/config-guide/b\\_wl\\_17\\_13\\_cg.html](https://www.cisco.com/c/en/us/td/docs/wireless/controller/9800/17-13/config-guide/b_wl_17_13_cg.html)

### **Cisco Catalyst 9800 Series Wireless Controller 17.13 Configuration Guide**

[https://www.cisco.com/c/en/us/td/docs/wireless/controller/9800/17-13/config-guide/b\\_wl\\_17\\_13\\_cg.html](https://www.cisco.com/c/en/us/td/docs/wireless/controller/9800/17-13/config-guide/b_wl_17_13_cg.html)

### **Cisco Catalyst 9800 Series Wireless Controller 17.13 Release Notes**

<https://www.cisco.com/c/en/us/td/docs/wireless/controller/9800/17-13/release-notes/rn-17-13-9800.html>

### **Release Notes for Cisco Spaces**

<https://www.cisco.com/c/en/us/td/docs/wireless/spaces/release-notes/b-cisco-spaces-rn/m-november-2023.html>

### **Cisco Catalyst 9600 Series Switches 17.13 Release Notes**

[https://www.cisco.com/c/en/us/td/docs/switches/lan/catalyst9600/software/release/17-13/release\\_notes/ol-17-13-9600.html](https://www.cisco.com/c/en/us/td/docs/switches/lan/catalyst9600/software/release/17-13/release_notes/ol-17-13-9600.html)

### **Release Notes Cisco Digital Network Architecture Center**

[https://www.cisco.com/c/en/us/td/docs/cloud-systems-management/network-automation-and-management/dna-center/2-3-7/release\\_notes/b\\_cisco\\_dna\\_center\\_rn\\_2\\_3\\_7.html](https://www.cisco.com/c/en/us/td/docs/cloud-systems-management/network-automation-and-management/dna-center/2-3-7/release_notes/b_cisco_dna_center_rn_2_3_7.html)

### **PI 3.10 User Guide**

[https://www.cisco.com/c/en/us/td/docs/net\\_mgmt/prime/infrastructure/3-10/user/guide/ciscoprimeinfrastructure\\_3\\_10\\_userguide.html](https://www.cisco.com/c/en/us/td/docs/net_mgmt/prime/infrastructure/3-10/user/guide/ciscoprimeinfrastructure_3_10_userguide.html)

### **ISE 3.3 Release Notes**

[https://www.cisco.com/c/en/us/td/docs/security/ise/3-3/release\\_notes/b\\_ise\\_33\\_RN.html](https://www.cisco.com/c/en/us/td/docs/security/ise/3-3/release_notes/b_ise_33_RN.html)