



Test Results Summary for Catalyst 9800 Series Wireless Controller 17.12 for Japan (Release Version 17.12)

First Published: 2023-07-26

Last Modified: 2023-07-28

Americas Headquarters

Cisco Systems, Inc.
170 West Tasman Drive
San Jose, CA 95134-1706
USA
<http://www.cisco.com>
Tel: 408 526-4000
800 553-NETS (6387)
Fax: 408 527-0883



CONTENTS

CHAPTER 1

Overview 1

Catalyst 9800 test 2

CHAPTER 2

Test topology and Environment Matrix 7

Test Topology 8

Component Matrix 9

What's New ? 11

Open Caveats 12

Resolved Caveats 13

CHAPTER 3

New Features 15

Interferer recording [CleanAir Pro] 16

Configuring Transition Mode and Pure WPA3 (6-GHz) on the Same WLAN Profile 19

Ease of Debugging 22

Rogue Channel Width 25

Access Point Auto Location Support 27

Archive less than 1 day 28

Intelligent Capture (iCAP) Hardening 34

KPIs for AP Health Via the Controller and AP 36

Rogue PMF 38

Cisco Catalyst 9800 Wireless Controller for Cloud - Ultra-Low Profile 41

New Countries Supporting 6-GHz Radio Band 45

Embedded Packet Capture Enhancement 48

CHAPTER 4

Regression Features 51

11ax Advanced traffic based scheduler for scheduling SU, OFDMA and MU traffic on 9105/9115/9120 **53**

11ax BSS Coloring(OBSS PD) on 9105/9115/9120 APs **57**

Ability to configure XOR radio for APs in Sniffer mode **59**

Calendar profile enhancements **61**

Device classification enhancement **63**

Dot1x+EWA on MAC Failure **66**

EasyPSK Phase 2 : WLAN Client Onboarding without Registration (local switching) **69**

Out-of-Band AP Image Download **73**

Enable AP fallback to primary, secondary or tertiary controllers under AP Join Profile **77**

Enhancement in client steering during Rolling AP Upgrade **80**

EWC support for WiFi6 APs **83**

Reload Reason History **85**

HA SSO RMI **87**

Intelligent AP auditing on WLC **90**

Intelligent Capture OTA Sniffer Device Work **93**

Convert Redundant 2.4-GHz Radios to Monitor Mode **96**

IP Theft on 9800 WLC [Central Mode of operation] **99**

N+1 Hitless Upgrade - Site based Upgrade **104**

Network Service Analytics : DNS/DHCP/AAA server reachability via IPSLA and Failure reasons for AAA/DHCP **107**

New Device Support for 9164/9166 AP **109**

OEAP URL based ACLs for split tunnel **114**

Open RRM **116**

Per client Bidirectional rate limiting, flex local switching **118**

Wireless Client Latency Statistics **121**

PER SSID filtering for assurance on Cat9800 **124**

Provide alert mechanism on web-ui for critical events on controller **127**

PSK + Multi Auth Support for Guest **128**

Rolling AP Upgrade Enhancements **130**

Scheduling of SSID broadcast **132**

Smart Licencing **134**

SSID per radio on Dual 5G **135**

Secure Data Wipe **138**

To share Client Delete reason code at AP to controller	144
New AAA Command	147
Wireless Troubleshooting on DNAC - AP Troubleshooting Workflow	149
Wireless Troubleshooting on DNAC - Multi WLC Log collection	151
WPA3 SAE client exclusion optimization for local mode	153
WPA3 Supporting 'Transition Disable'	154
SRCFD	157

CHAPTER 5

Related Documents	177
Related Documentation	178



Overview

- [Catalyst 9800 test](#) , on page 2

Catalyst 9800 test

Cisco Catalyst 9800 test , an integral part of the enterprise wireless solution, is a program that validates various Cisco Wireless Products and Features. This is achieved by testing the latest versions of Cisco wireless products

Cisco Catalyst 9800 for Japan , in turn is an add-on testing at the solution level, where the requirements gathered are specific to Japanese usage and market. The requirements are derived based on the following:

- New features in Catalyst 9800 17.12
- High priority scenarios and basic regression features
- Inputs from Cisco SEs/ TAC

The test execution is carried out on selected Cisco Wireless LAN products, which affect the Japanese segment that are prioritized by Cisco Japan team.

The following products are covered in the test execution:

- Cisco Catalyst 9800 Series Wireless Controller
- Cisco Catalyst 9800-CL Wireless Controller for Cloud
- Cisco Embedded Wireless Controller on Catalyst Access Points
- Cisco DNA Center
- Cisco Spaces
- Cisco Spaces Connector
- Prime Infrastructure
- Identity Service Engine(VM)
- Cisco ISR 1100
- Cisco AP c9105
- Cisco AP c9115
- Cisco AP c9120
- Cisco AP c9130
- Cisco AP c9124
- Cisco AP c9164
- Cisco AP c9166
- Access Point 4800

Acronyms

Acronym	Description
AAA	Authentication Authorization and Accounting

Acronym	Description
ACL	Access Control List
ACS	Access Control Server
AKM	Authentication Key Management
API	Application Programming Interface
APIC-EM	Application Policy Infrastructure Controller - Enterprise Module
ATF	Air-Time Fairness
BLE	Bluetooth Low Energy
BYOD	Bring Your Own Device
CA	Central Authentication
CAC	Call Admissions Control
CAPWAP	Control and Provisioning of Wireless Access Point
CCN	Channel Change Notification
CCX	Cisco Compatible Extensions
CKIP	Cisco Key Integrity Protocol
CVBF	Cisco Vector Beam Forming
CWA	Central Web Authentication
DCA	Dynamic Channel Assignment
DMZ	Demilitarized Zone
DTIM	Delivery Traffic Indication Map
DSCP	Differentiated Services Code Point
DTLS	Datagram Transport Layer Security
EAP	Extensible Authentication Protocol
EULA	End User Licence Agreement
FLA	Flex Local Authentication
FLS	Flex Local Switching
FT	Fast Transition
FW	Firm Ware
H-REAP	Hybrid Remote Edge Access Point
IOS	Internetwork Operating System
ISR	Integrated Services Router
LAG	Link Aggregation
LEAP	Lightweight Extensible Authentication Protocol

Acronym	Description
LSS	Location Specific Services
LWAPP	Lightweight Access Point Protocol
MAP	Mesh Access Point
MCS	Modulation Coding Scheme
MFP	Management Frame Protection
mDNS	multicast Domain Name System
MIC	Message Integrity Check
MSE	Mobility Service Engine
MTU	Maximum Transmission Unit
NAC	Network Admission Control
NBAR	Network Based Application Recognition
NCS	Network Control System
NGWC	Next Generation Wiring closet
NMSP	Network Mobility Services Protocol
OEAP	Office Extended Access Point
PEAP	Protected Extensible Authentication Protocol
PEM	Policy Enforcement Module
PMF	Protected Management Frame
POI	Point of Interest
PPPoE	Point-to-Point Protocol over Ethernet
PSK	Pre-shared Key
QOS	Quality of service
RADIUS	Remote Authentication Dial-In User Service
RP	Redundancy Port
RRM	Radio Resource Management
SS	Spatial Stream
SSID	Service Set Identifier
SSO	Single Sign On
SSO	Stateful Switch Over
SWIM	Software Image Management
TACACS	Terminal Access Controller Access Control System
TLS	Transport Layer Security

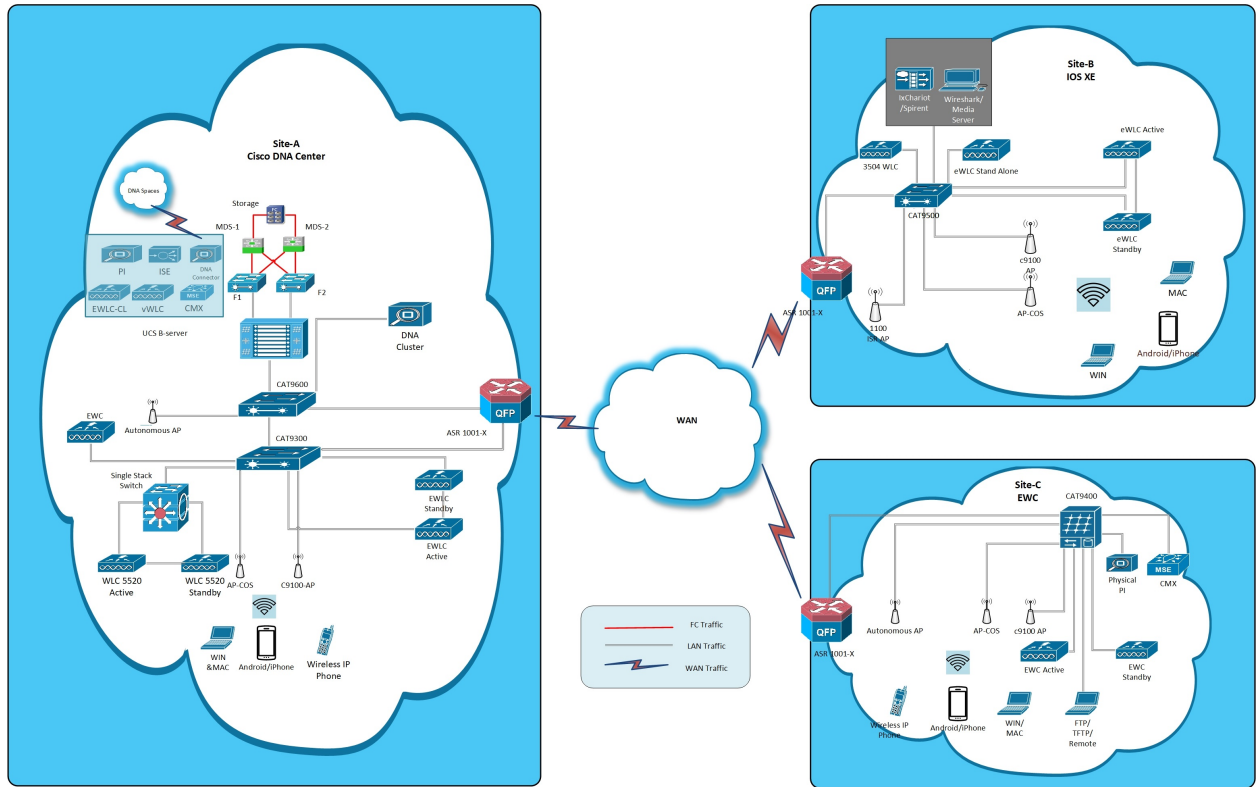
Acronym	Description
WEP	Wired Equivalent Privacy
WGB	Workgroup Bridge
WPA	Wi-Fi Protected Access
WSM	Wireless Security Module



Test topology and Environment Matrix

- [Test Topology, on page 8](#)
- [Component Matrix, on page 9](#)
- [What's New ?, on page 11](#)
- [Open Caveats, on page 12](#)
- [Resolved Caveats, on page 13](#)

Test Topology



Component Matrix

Category	Component	Version
Controller	Cisco Catalyst 9800-40 Wireless Controller	17.12
	Cisco Catalyst 9800-80 Wireless Controller	17.12
	Cisco Catalyst 9800-CL Wireless Controller for Cloud	17.12
	Cisco Catalyst 9800-L Wireless Controller	17.12
	Cisco Embedded Wireless Controller on Catalyst Access Points	17.12
	Virtual Controller	8.10.121.0
Applications	Cisco DNA Center	2.3.7
	Cisco Spaces	Cloud (June 2023)
	Cisco Spaces Connector	2.3.4 and 3.0
	Prime Infrastructure (Virtual Appliance, UCS based)	3.10
	ISE(VM)	3.2
	Cisco Jabber for Windows, iPhone	14.1.5
	Cisco Air Provisioning App	1.7.4
	Cisco Wireless App	1.1.113
Access Point	Cisco AP 9166	17.12
	Cisco AP 9164	17.12
	Cisco AP 9124	17.12
	Cisco AP 9130	17.12
	Cisco AP 9120	17.12
	Cisco AP 9115	17.12
	Cisco AP 9105	17.12
	Cisco 1100 ISR	17.12
	Cisco AP 4800	15.3

Category	Component	Version	
Switch	Cisco Cat 9300	17.12	
	Cisco Cat 9200L	17.12	
	Cisco 3750V2 switch	15.0(2)SE2	
	Cisco Cat 6509-E	15.1(1)SY1	
Chipset	5300, 6300 AGN	15.40.41.5058	
	7265 AC	21.40.2	
	Airport Extreme	7.9.1	
Client	Operating System(JOS)	Windows 10	
	Apple Mac Book Pro, Apple Mac Book Air (JP Locale)	Mac OS 13	
	iPad Pro	iOS 16	
	iPhone 14 Pro, 6, 6S ,7 & 11 (JP Locale)	iOS 16	
	Google Pixel 7 Pro, Samsung Galaxy S22 Ultra, S7, S10, Nexus 6P, Sony Xperia XZ	Android 13	
	Wireless IP Phone 8821	11.0.5	
	End points	Apple Mac 12.6.3	
		iPhone 6,6S ,7, 11 & 14 Pro	
		Windows 10	
		Windows 11	
	Google Pixel 7 Pro, Samsung Galaxy S22 Ultra, S4, S7,S10, Nexus 6P, Sony Xperia		
Cisco AnyConnect VPN Client	4.10.07061		
MS surface GO	Windows 10 & 11		
Module	Hyper location Module	NA	
Active Directory	AD	Windows server 2022	
Call Control	Cisco Unified Communications Manager	12.5.0.99832-3/12.5.0.99832-3-1(JP)	
Browsers	IE	11.0	
	Mozilla Firefox	115.0.2	
	Safari	16.5	
	Chrome	115.0.5790	

What's New ?

Cisco Catalyst 9800 Series Wireless Controller

- Interferer Recording [CleanAir Pro]
- Configuring Transition Mode and Pure WPA3 (6-GHz) on the Same WLAN Profile
- Ease of Debugging
- Rogue Channel Width
- Access Point Auto Location Support
- Archive less than 1 day
- Intelligent Capture (iCAP) Hardening
- KPIs for AP Health Via the Controller and AP
- Rogue PMF
- Cisco Catalyst 9800 Wireless Controller for Cloud - Ultra-Low Profile
- New Countries Supporting 6-GHz Radio Band
- Embedded Packet Capture Enhancement

Open Caveats

Defect ID	Title
CSCwf24083	WLAN Wizard Bulk Import overlapping issue observed
CSCwf71559	eWLC UI : Documents in help page for Bulk AP provisioning are not available or missing
CSCwf74020	Walkme : Indicates AAA Radius Server Creation Success Even when UI Message Indicates Warning
CSCwf96250	PING <ip> command is working in Command Line Interface of UI
CSCwf74022	Walkme While Adding RADIUS Server moves to success window without allowing additional configuration
CSCwf94993	Overlap & Misalignment issues - Flex profile.
CSCwf56797	Apply to device button is not visible properly in DHCP Pools in low resolution
CSCwf72585	AKM parameters should be hidden for Static WEP configuration
CSCwf74023	Walkme : While Configure AAA Authentication Method List Type Showing Error Message
CSCwf51279	Unable to take eWLC UI after Image Upgrade
CSCwf96239	Able to edit Channel Width under Global Assignment Method
CSCwf71287	Upgrading Controller resulted in crash
CSCwf79479	Unable to create Rogue AP Rules with "Delete State"
CSCwf47716	Need UI support for Improve EPC on 9800 feature
CSCwf87431	Flex >> Vlan Delete button issue
CSCwf63309	JA Locale: Observed multiple issues when user admin account is created with Japanese characters

Resolved Caveats

Defect ID	Title
CSCwf28350	AP Join Profile name help content needs to be modified
CSCwf28455	Max Client Connections Help content valid range should be as per UI
CSCwf58415	Multiple issues observed in Guest Lan profile configuration
CSCwf53826	Not able to Configure Dual-Band Radio of AP9166
CSCwf61491	Walkme : QOS Client Policy Notification Not Visible Properly
CSCwf68764	Walkme : While Configured OpenRoaming Server showing Miss position in Policy profile
CSCwf52454	Dev Code is seen for debug wireless bundle client abort in cli
CSCwf66220	Not able to delete DHCP options list
CSCwf23543	Overlap issue in Bulk AP Provisioning
CSCwf35587	Export Option is not working AP Statistics & Clients
CSCwf36262	Walkme : While Configure Channel Number is Disappeared In Static Tx power for APs
CSCwf69055	6GHz and Dual-band radios configuration issue
CSCwf28527	AP Join Profile Client default values needs to be modified in help content
CSCwf30656	Walkme - While configuring policy profile Central Switching shows as Disable Mode
CSCwf36254	Walkme : Error message is shown for configure global mesh workflow
CSCwf23392	Troubleshooting CleanAir Pro - Spectral Capture Issue
CSCwf67245	Configure mDNS Active query timer range, default value should shown in UI
CSCwf68752	Walkme Indicates policy profile openRoaming Creation Success Even when UI Message Indicates Warning
CSCwf72439	Add button is overlapped into CTS authorization list drop down
CSCwf24697	i icon is overlapped into enable toggle switch

CSCwf42050	Spectral capture-Channel number ranges for 1-233 for all band types
CSCwf62671	Unable to delete files in bootflash
CSCwf93706	Throughput value is differ from help document and UI while configuring RRM 6GHz/5GHz/2.4GHz network
CSCwf57089	Walkme : popup Hides the Group Type dropdown In AAA Authentication
CSCwf64441	Walkme-While Configure ANQP Server Roaming Organization Identifier Error Box doesn't shown properly
CSCwf37578	Events : Export to Excel is not working



New Features

- [Interferer recording \[CleanAir Pro\], on page 16](#)
- [Configuring Transition Mode and Pure WPA3 \(6-GHz\) on the Same WLAN Profile, on page 19](#)
- [Ease of Debugging, on page 22](#)
- [Rogue Channel Width, on page 25](#)
- [Access Point Auto Location Support, on page 27](#)
- [Archive less than 1 day, on page 28](#)
- [Intelligent Capture \(iCAP\) Hardening, on page 34](#)
- [KPIs for AP Health Via the Controller and AP, on page 36](#)
- [Rogue PMF, on page 38](#)
- [Cisco Catalyst 9800 Wireless Controller for Cloud - Ultra-Low Profile, on page 41](#)
- [New Countries Supporting 6-GHz Radio Band, on page 45](#)
- [Embedded Packet Capture Enhancement, on page 48](#)

Interferer recording [CleanAir Pro]

Logical ID	Title	Description	Status	Defect ID
EWLCJ1712S_CAPro_1	Start the spectral capture by entering ap name in GUI	To check and start the spectral capture of AP name entered manually	Passed	CSCwf23392
EWLCJ1712S_CAPro_2	Start the spectral capture by CleanAir Pro Capable AP List in GUI	To check and start the spectral capture entered from CleanAir Pro Capable AP List	Passed	CSCwf35587
EWLCJ1712S_CAPro_3	Start the spectral capture for AP through CLI	To check and start the spectral capture for AP through CLI	Passed	
EWLCJ1712S_CAPro_4	Stop the Spectral capture AP through CLI	To Perform and check Stop the Spectral capture through CLI	Passed	
EWLCJ1712S_CAPro_5	Abort the Spectral Capture through CLI	To Perform and check Abort the Spectral Capture through CLI	Passed	
EWLCJ1712S_CAPro_6	Stop the Spectral capture in GUI	To Perform and check Stop the Spectral capture in GUI	Passed	
EWLCJ1712S_CAPro_7	Abort the Spectral Capture in GUI	To Perform and check Abort the Spectral Capture in GUI	Passed	
EWLCJ1712S_CAPro_8	spectral capture for AP 2.4Ghz band through CLI	To Perform spectral capture for AP 2.4Ghz band through CLI	Passed	
EWLCJ1712S_CAPro_9	spectral capture for AP 6 Ghz band through CLI	To Perform spectral capture for AP 6 Ghz band through CLI	Passed	
EWLCJ1712S_CAPro_10	spectral capture for AP 5 Ghz band through CLI	To Perform spectral capture for AP 5 Ghz band through CLI	Passed	

EWLCJ1712S_CAPro_11	spectral capture for AP 2.4Ghz band through GUI	To Perform spectral capture for AP 2.4Ghz band through GUI	Passed	CSCwf42050
EWLCJ1712S_CAPro_12	spectral capture for AP 6 Ghz band through GUI	To Perform spectral capture for AP 6 Ghz band through GUI	Passed	
EWLCJ1712S_CAPro_13	spectral capture for AP 5 Ghz band through GUI	To Check spectral capture for AP 5 Ghz band through GUI	Passed	
EWLCJ1712S_CAPro_14	Spectral capture for Ap by All Capture option in GUI	To check and get Spectral capture for Ap for by All Capture option in GUI	Passed	
EWLCJ1712S_CAPro_15	Spectral capture for AP by device type in GUI	To check and get Spectral capture for AP by device type in GUI	Passed	
EWLCJ1712S_CAPro_16	Spectral capture for AP by Frequency type in GUI	To check and get Spectral capture for AP by Frequency type in GUI	Passed	
EWLCJ1712S_CAPro_17	Spectral capture for AP by Severity type in GUI	To check and get Spectral capture for AP by Severity type in GUI	Passed	
EWLCJ1712S_CAPro_18	Number of frames for spectral capture through GUI	To check number of frames is given in range for spectral capture through GUI	Passed	
EWLCJ1712S_CAPro_19	Number of frames for spectral capture through CLI	To check the number of frames for spectral capture through CLI	Passed	
EWLCJ1712S_CAPro_20	Frequency for spectral capture through GUI	To check Frequency for spectral capture through GUI	Passed	
EWLCJ1712S_CAPro_21	Capturing Specific channel for radio bands through GUI	To check Capturing Specific channel for radio bands through GUI	Passed	

EWLCJ1712S_CAPro_22	Frequency for spectral capture through CLI	To check Frequency for spectral capture through CLI	Passed	
EWLCJ1712S_CAPro_23	Capturing Specific channel for radio bands through CLI	To check Capturing Specific channel for radio bands through CLI	Passed	
EWLCJ1712S_CAPro_24	Download the spectral capture recording for 9166 AP	To check and download the spectral capture recording for 9166 AP	Passed	
EWLCJ1712S_CAPro_25	Download the spectral capture recording for 9164 AP	To check and download the spectral capture recording for 9164 AP	Passed	

Configuring Transition Mode and Pure WPA3 (6-GHz) on the Same WLAN Profile

Logical ID	Title	Description	Status	Defect ID
EWLCJ1712S_WPA3-6_1	Create pure 6GHz [PMF 802.1X] in transition mode	To create and connect pure 6GHz [PMF 802.1X] in transition mode with 802.1x security	Failed	CSCwf63309
EWLCJ1712S_WPA3-6_2	Create pure 6GHz [PMF 802.1X] in transition mode	To create and connect pure 6GHz [PMF 802.1X] in transition mode with CCKM	Passed	
EWLCJ1712S_WPA3-6_3	Create pure 6GHz SAE in transition mode [PMF PSK] and PSK	To create and connect pure 6GHz [SAE] in transition mode with [PMF PSK]and PSK	Passed	
EWLCJ1712S_WPA3-6_4	Create pure 6GHz [SAE] in transition mode	To create and connect pure 6GHz [SAE] in transition mode with PSK security	Passed	
EWLCJ1712S_WPA3-6_5	Create pure 6GHz [SUITEB-1X] in transition mode	To create and connect pure 6GHz [SUITEB-1X] in transition mode with GCMP128	Passed	
EWLCJ1712S_WPA3-6_6	Create pure 6GHz SAE in transition mode [PMF PSK]	To create and connect pure 6GHz [SAE] in transition mode with [PMF PSK]	Passed	
EWLCJ1712S_WPA3-6_7	Create pure 6GHz [AES] [PMF 802.1X] in transition mode	To create and connect pure 6GHz [AES] [PMF 802.1X] in transition mode	Passed	
EWLCJ1712S_WPA3-6_8	Create pure 6GHz [SUITEB-192-1X] in transition mode for CCMP256	To create and connect pure 6GHz [SUITEB-192-1X] in transition mode CCMP256	Passed	

EWLCJ1712S_WPA36_9	Create pure 6GHz [SUITEB-192-1X] in transition mode for GCMP256	To create and connect pure 6GHz [SUITEB-192-1X] in transition mode GCMP256	Passed	
EWLCJ1712S_WPA36_10	Roaming client from 6GHz band to 5 GHz band for transition mode	To perform Roaming client from 6GHz band to 5 GHz band for transition mode	Passed	
EWLCJ1712S_WPA36_11	Roaming client from 6GHz band to 2.4 GHz band for transition mode	To perform Roaming client from 6GHz band to 2.4 GHz band for transition mode	Passed	
EWLCJ1712S_WPA36_12	Roaming client from 2.4GHz band to 6GHz band	To perform Roaming client from 2.4 GHz band to 6GHz band for transition mode	Failed	CSCwf74022
EWLCJ1712S_WPA36_13	Roaming client from 5 GHz band to 6GHz band	To perform Roaming client from 5 GHz band to 6GHz band for transition mode	Passed	
EWLCJ1712S_WPA36_14	Transition mode as Fast transition SAE with PSK security	To create and connect Transition mode as Fast transition SAE with PSK security	Passed	
EWLCJ1712S_WPA36_15	Create pure 6GHz in transition mode for 9800-80 Controller	To create and connect pure 6GHz in transition mode for 9800-80 Controller	Passed	
EWLCJ1712S_WPA36_16	Create pure 6GHz in transition mode for 9800-40 Controller	To create and connect pure 6GHz in transition mode for 9800-40 Controller	Passed	
EWLCJ1712S_WPA36_17	Create pure 6GHz in transition mode for 9800-L Controller	To create and connect pure 6GHz in transition mode for 9800-L Controller	Passed	

EWLCJ1712S_WPA36_18	Create pure 6GHz in transition mode for 9800-CL Controller	To create and connect pure 6GHz in transition mode for 9800-CL Controller	Passed	
EWLCJ1712S_WPA36_19	Connect pure 6GHz in transition mode for android clients	To check and connect pure 6GHz in transition mode for android clients	Failed	CSCwf74023
EWLCJ1712S_WPA36_20	Connect pure 6GHz in transition mode for mac clients	To check and connect pure 6GHz in transition mode for mac clients	Passed	
EWLCJ1712S_WPA36_21	Connect pure 6GHz in transition mode for windows clients	To check and connect pure 6GHz in transition mode for windows clients	Passed	CSCwf93706
EWLCJ1712S_WPA36_22	Connect pure 6GHz in transition mode for surface clients	To check and connect pure 6GHz in transition mode for surface clients	Passed	

Ease of Debugging

Logical ID	Title	Description	Status	Defect ID
EWLCJ1712S_EoD_1	Check to create client debug bundle for single client	To create and start client debug bundle for single client	Passed	
EWLCJ1712S_EoD_2	Check to create client debug bundle for five clients	To create and start client debug bundle for five clients	Passed	
EWLCJ1712S_EoD_3	Check to create client debug bundle for more than 10 clients	To create and start client debug bundle for more than 10 clients	Passed	
EWLCJ1712S_EoD_4	Check to stop and collect client debug bundle for five clients	To stop and collect client debug bundle for five clients	Passed	
EWLCJ1712S_EoD_5	Check to stop and collect client debug bundle for specific client	To stop and collect client debug bundle for specific clients in given 10 clients	Passed	
EWLCJ1712S_EoD_6	Check for abort or cancel client debug bundle	To Check whether the client debug bundle can be aborted or cancelled in between	Passed	
EWLCJ1712S_EoD_7	Check the Collected client debug bundle	To Check and Verify the tar file collected from client debug bundle	Passed	
EWLCJ1712S_EoD_8	Check to create client debug bundle with monitor timing	To start client debug bundle with monitor timing and to check it is stopped after exceeding monitor time	Passed	
EWLCJ1712S_EoD_9	Check for abort or cancel client debug bundle with monitor timing	To Check whether the client debug bundle can be aborted or cancelled before the monitor time	Passed	CSCwf52454

EWLCJ1712S_EoD_10	Check the Collected client debug bundle with monitor time	To Check and Verify the tar file collected from client debug bundle with monitor time	Passed	
EWLCJ1712S_EoD_11	Check to create client debug bundle with epc	To start client debug bundle with epc	Passed	
EWLCJ1712S_EoD_12	Check the Collected client debug bundle with epc	To Check and Verify the tar file collected from client debug bundle with epc	Passed	
EWLCJ1712S_EoD_13	Start and Collected client debug bundle with epc and monitor timing	To Start and Verify the tar file collected from client debug bundle with epc and monitor timing	Passed	
EWLCJ1712S_EoD_14	Start and Collected client debug bundle with ap-archive with critical level	To Start and Verify the tar file collected from client debug bundle with ap-archive with critical level	Passed	
EWLCJ1712S_EoD_15	Start and Collected client debug bundle with ap-archive with debug level	To Start and Verify the tar file collected from client debug bundle with ap-archive with debug level	Passed	
EWLCJ1712S_EoD_16	Start and Collected client debug bundle with ap-archive with error level	To Start and Verify the tar file collected from client debug bundle with ap-archive with error level	Passed	
EWLCJ1712S_EoD_17	Start and Collected client debug bundle with ap-archive with verbose level	To Start and Verify the tar file collected from client debug bundle with ap-archive with verbose level	Passed	

EWLCJ1712S_EoD_18	Start and Collected client debug bundle with epc and monitor timing and ap-archive	To Start and Verify the tar file collected from client debug bundle with epc and monitor timing and ap-archive	Passed	
-------------------	--	--	--------	--

Rogue Channel Width

Logical ID	Title	Description	Status	Defect ID
EWLCJ1712S_ERD_1	Check Whether able to configure rogue rule for 2.4 GHz	To check Whether able to configure rogue rule for 2.4 GHz	Passed	
EWLCJ1712S_ERD_2	Check Whether able to configure rogue rule for 5 GHz	To check whether able to configure rogue rule for 5GHz	Passed	
EWLCJ1712S_ERD_3	Check whether able to configure rogue rule for 6 GHz	To check whether able to configure rogue rule for 6 GHz	Failed	CSCwf96239
EWLCJ1712S_ERD_4	Check above scenarios from GUI	To check above scenarios from GUI	Passed	
EWLCJ1712S_ERD_5	Check the list of AP's matched for rogue rule	To check the list of AP's matched for rogue rule	Passed	
EWLCJ1712S_ERD_6	Check whether able to configure rogue AP manually	To check whether able to configure rogue AP manually	Passed	
EWLCJ1712S_ERD_7	Configure rogue AP Rule as friendly	To configure rogue AP Rule as friendly	Failed	CSCwf79479
EWLCJ1712S_ERD_8	Configure rogue AP Rule as malicious	To configure rogue AP Rule as malicious	Passed	
EWLCJ1712S_ERD_9	Configure rogue AP Rule as Unclassified	To configure rogue AP Rule as Unclassified	Passed	
EWLCJ1712S_ERD_10	Configure rogue AP Rule as Custom	To configure rogue AP Rule as Unclassified	Passed	
EWLCJ1712S_ERD_11	Connect windows client and check rogue client detection	To connect windows client and check rogue client detection	Passed	
EWLCJ1712S_ERD_12	Connect Android client and check rogue client detection	To connect Android client and check rogue client detection	Passed	

EWLCJ1712S_ERD_13	Check & compare client for different channel widths	To check & compare client for different channel widths	Passed	
EWLCJ1712S_ERD_14	Check & compare client for different bands	To check & compare client for different bands	Passed	

Access Point Auto Location Support

Logical ID	Title	Description	Status	Defect ID
EWLCJ1712S_EnAP_1	Configure geolocation for AP	To validate geolocation details for ap showing or not	Passed	
EWLCJ1712S_EnAP_2	Validate AP FTM Capability	To verify ap FTM details showing for ap or not	Passed	
EWLCJ1712S_EnAP_3	Configure FTM Ranging for all APs	To verify FTM ranging enabled for all aps or not	Passed	
EWLCJ1712S_EnAP_4	Configure Custom FTM Burst options	To verify FTM burst options configured as custom or not	Passed	CSCwf28350
EWLCJ1712S_EnAP_5	Check AP neighbours	To verify neighbour ap showing or not	Failed	CSCwf71559
EWLCJ1712S_EnAP_6	Trigger User initiated Ranging	To verify ranging details triggered or not for ap	Passed	
EWLCJ1712S_EnAP_7	Trigger Air pressure data collection	To verify air pressure details triggered for ap or not	Passed	
EWLCJ1712S_EnAP_8	Configure ap join profile for geolocation	To verify geolocation details in ap join profile	Passed	
EWLCJ1712S_EnAP_9	Validate air pressure	To verify air pressure details in ap geolocation	Passed	
EWLCJ1712S_EnAP_10	Configure LCI /Client location	To verify Client location showing or not	Passed	CSCwf30656

Archive less than 1 day

Logical ID	Title	Description	Status	Defect ID
EWLCJ1712S_EAT_1	Configure WLAN with WPA Security and PSK Auth	Verify able to Config WLAN with WPA Security and PSK Auth	Passed	
EWLCJ1712S_EAT_2	Connect with an Android client with WPA - PSK configured WLAN	To collect trace logs connect & verify with an android client with WPA - PSK configured WLAN	Passed	
EWLCJ1712S_EAT_3	Connect with an IOS client with WPA - PSK configured WLAN	To collect trace logs connect & verify with an IOS client with WPA - PSK configured WLAN	Passed	
EWLCJ1712S_EAT_4	Connect with an windows client with WPA - PSK configured WLAN	To collect trace logs connect & verify with an windows client with WPA - PSK configured WLAN	Passed	
EWLCJ1712S_EAT_5	Connect with an MAC client with WPA - PSK configured WLAN	To collect trace logs connect & verify with an MAC client with WPA - PSK configured WLAN	Passed	
EWLCJ1712S_EAT_6	Connect with an Surface client with WPA - PSK configured WLAN	To collect trace logs connect & verify with an surface client with WPA - PSK configured WLAN	Passed	
EWLCJ1712S_EAT_7	Configure WLAN with WPA-2 security and PSK Auth	verify able to config WLAN with WPA-2 security and PSK Auth	Passed	
EWLCJ1712S_EAT_8	Connect with an android client with WPA2 - PSK configured WLAN	To collect trace logs connect & verify with an android client with WPA2 - PSK configured WLAN	Passed	

EWLCJ1712S_EAT_9	Connect with an IOS client with WPA2 - PSK configured WLAN	To collect trace logs connect & verify with an IOS client with WPA2 - PSK configured WLAN	Passed	
EWLCJ1712S_EAT_10	Connect with an windows client with WPA2 - PSK configured WLAN	To collect trace logs connect & verify with an windows client with WPA2 - PSK configured WLAN	Passed	
EWLCJ1712S_EAT_11	Connect with an MAC client with WPA2 - PSK configured WLAN	To collect trace logs connect & verify with an MAC client with WPA2 - PSK configured WLAN	Passed	
EWLCJ1712S_EAT_12	Connect with an Surface client with WPA2 - PSK configured WLAN	To collect trace logs connect & verify with an surface client with WPA2 - PSK configured WLAN	Passed	
EWLCJ1712S_EAT_13	Configuring WLAN with WPA3-Dot1x security	verify able to config WLAN with WPA3-Dot1x security	Passed	
EWLCJ1712S_EAT_14	Connect with an android client with WPA3 - Dot1x configured WLAN	To collect trace logs connect & verify with an android client with WPA3 - Dot1x configured WLAN	Passed	
EWLCJ1712S_EAT_15	Connect with an IOS client with WPA3 - Dot1x configured WLAN	To collect trace logs connect & verify with an IOS client with WPA3 - Dot1x configured WLAN	Passed	
EWLCJ1712S_EAT_16	Connect with an windows client with WPA3 - Dot1x configured WLAN	To collect trace logs connect & verify with an windows client with WPA3 - Dot1x configured WLAN	Passed	

EWLCJ1712S_EAT_17	Connect with an MAC client with WPA3 - Dot1x configured WLAN	To collect trace logs connect & verify with an MAC client with WPA3 - Dot1x configured WLAN	Passed	
EWLCJ1712S_EAT_18	Connect with an Surface client with WPA3 - Dot1x configured WLAN	To collect trace logs connect & verify with an surface client with WPA3 - Dot1x configured WLAN	Passed	
EWLCJ1712S_EAT_19	Configuring WLAN with WPA3-SAE security	verify able to config WLAN with WPA3-SAE security	Passed	
EWLCJ1712S_EAT_20	Connect with an android client with WPA3 - SAE security	To collect trace logs connect & verify with an android client with WPA3 - SAE security	Passed	
EWLCJ1712S_EAT_21	Connect with an IOS client with WPA3 - SAE security	To collect trace logs connect & verify with an IOS client with WPA3 - SAE security	Passed	
EWLCJ1712S_EAT_22	Connect with an windows client with WPA3 - SAE security	To collect trace logs connect & verify with an windows client with WPA3 - SAE security	Passed	
EWLCJ1712S_EAT_23	Connect with an MAC client with WPA3 - SAE security	To collect trace logs connect & verify with an MAC client with WPA3 - SAE security	Passed	
EWLCJ1712S_EAT_24	Connect with an Surface client with WPA3 - SAE security	To collect trace logs connect & verify with an surface client with WPA3 - SAE security	Passed	
EWLCJ1712S_EAT_25	Configuring WLAN with WPA3- SAE security with radio band 2.4/5 ghz & enable 11ax	verify able to config WLAN with WPA3-SAE security with radio band 2.4/5ghz & enable 11ax.	Passed	

EWLCJ1712S_EAT_26	Connect with an android client with WPA3 - SAE security & radio band 2.4/5 ghz & enable 11ax	To collect trace logs connect & verify with an android client with WPA3 - SAE security & with radio band 2.4/5 ghz & enable 11ax	Passed	
EWLCJ1712S_EAT_27	Connect with an IOS client with WPA3 - SAE security with radio band 2.4/5 ghz & enable 11ax	To collect trace logs connect & verify with an IOS client with WPA3 - SAE security with radio band 2.4/5 ghz & enable 11ax	Passed	
EWLCJ1712S_EAT_28	Connect with an windows client with WPA3 - SAE security with radio band 2.4/5 ghz & enable 11ax	To collect trace logs connect & verify with an windows client with WPA3 - SAE security with radio band 2.4/5 ghz & enable 11ax	Passed	
EWLCJ1712S_EAT_29	Connect with an MAC client with WPA3 - SAE security with radio band 2.4/5 ghz & enable 11ax	To collect trace logs connect & verify with an MAC client with WPA3 - SAE security with radio band 2.4/5 ghz & enable 11ax	Passed	
EWLCJ1712S_EAT_30	Connect with an Surface client with WPA3 - SAE security with radio band 2.4/5 ghz & enable 11ax	To collect trace logs connect & verify with an surface client with WPA3 - SAE security with radio band 2.4/5 ghz & enable 11ax	Passed	
EWLCJ1712S_EAT_31	Configuring WLAN with WPA3- SAE security with radio band 2.4/5 ghz & enable 11ac	verify able to config WLAN with WPA3- SAE security with radio band 2.4/5ghz & enable 11ac.	Passed	

EWLCJ1712S_EAT_32	Connect with an android client with WPA3 - SAE security & radio band 2.4/5 ghz & enable 11ac	To collect trace logs connect & verify with an android client with WPA3 - SAE security & with radio band 2.4/5 ghz & enable 11ac	Passed	
EWLCJ1712S_EAT_33	Connect with an IOS client with WPA3 - SAE security with radio band 2.4/5 ghz & enable 11ac	To collect trace logs connect & verify with an IOS client with WPA3 - SAE security with radio band 2.4/5 ghz & enable 11ac	Passed	
EWLCJ1712S_EAT_34	Connect with an windows client with WPA3 - SAE security with radio band 2.4/5 ghz & enable 11ac	To collect trace logs connect & verify with an windows client with WPA3 - SAE security with radio band 2.4/5 ghz & enable 11ac	Passed	
EWLCJ1712S_EAT_35	Connect with an MAC client with WPA3 - SAE security with radio band 2.4/5 ghz & enable 11ac	To collect trace logs connect & verify with an MAC client with WPA3 - SAE security with radio band 2.4/5 ghz & enable 11ac	Passed	
EWLCJ1712S_EAT_36	Connect with an Surface client with WPA3 - SAE security with radio band 2.4/5 ghz & enable 11ac	To collect trace logs connect & verify with an surface client with WPA3 - SAE security with radio band 2.4/5 ghz & enable 11ac	Passed	
EWLCJ1712S_EAT_37	Configuring WLAN with WPA3- SAE security with radio band 2.4/2.4 /5 ghz & enable 11n	verify able to config WLAN with WPA3- SAE security with radio band 2.4/5ghz & enable 11ac.	Passed	

EWLCJ1712S_EAT_38	Connect with an android client with WPA3 - SAE security & radio band 2.4/5 ghz & enable 11n	To collect trace logs connect & verify with an android client with WPA3 - SAE security & with radio band 2.4/5 ghz & enable 11n	Passed	
EWLCJ1712S_EAT_39	Connect with an IOS client with WPA3 - SAE security with radio band 2.4/5 ghz & enable 11n	To collect trace logs connect & verify with an IOS client with WPA3 - SAE security with radio band 2.4/5 ghz & enable 11n	Passed	
EWLCJ1712S_EAT_40	Connect with an windows client with WPA3 - SAE security with radio band 2.4/5 ghz & enable 11n	To collect trace logs connect & verify with an windows client with WPA3 - SAE security with radio band 2.4/5 ghz & enable 11n	Passed	
EWLCJ1712S_EAT_41	Connect with an MAC client with WPA3 - SAE security with radio band 2.4/5 ghz & enable 11n	To collect trace logs connect & verify with an MAC client with WPA3 - SAE security with radio band 2.4/5 ghz & enable 11n	Passed	
EWLCJ1712S_EAT_42	Connect with an Surface client with WPA3 - SAE security with radio band 2.4/5 ghz & enable 11n	To collect trace logs connect & verify with an surface client with WPA3 - SAE security with radio band 2.4/5 ghz & enable 11n	Passed	

Intelligent Capture (iCAP) Hardening

Logical ID	Title	Description	Status	Defect ID
EWLCJ1712S_DD_1	Check for Anomaly detection enhancement commands in eWLC cli	To Check Whether the Anomaly detection enhancement command are available or not in eWLC controller	Passed	
EWLCJ1712S_DD_2	Check for show command to check Anomaly detection enhancement in eWLC and ap console	To Check and verify the default values on the enhanced fields of Anomaly detection with help of show command in eWLC and ap console	Passed	
EWLCJ1712S_DD_3	Check for show command to check RF-Stats enhancement in eWLC	To Check and verify the RF-Stats enhanced fields with help of show command in eWLC	Passed	
EWLCJ1712S_DD_4	Configure a per-type anomaly detection	To Check Whether the per-type anomaly detection can be configured or not	Passed	
EWLCJ1712S_DD_5	Check the per-type anomaly detection changes	To check and verify the configured per-type anomaly detection	Passed	
EWLCJ1712S_DD_6	Configure a per-client anomaly detection	To Check Whether the per-client anomaly detection can be configured or not	Passed	
EWLCJ1712S_DD_7	Check the per-client anomaly detection changes	To check and verify the configured per-client anomaly detection	Passed	
EWLCJ1712S_DD_8	check and verify anomaly detection with aggregate	To check and verify anomaly detection is created with aggregate or not	Passed	

EWLCJ1712S_DD_9	Enable Anomaly detection with both per-type and per client and verify in AP Console	To enable Anomaly detection with both per-type and per client and verify in AP Console	Passed	
EWLCJ1712S_DD_10	Enable Anomaly detection with both per-type and per client and verify in eWLC	To enable Anomaly detection with both per-type and per client and verify in eWLC	Passed	
EWLCJ1712S_DD_11	Check the single AP anomaly detection with per-type and per-client config	To Check and verify the single AP anomaly detection with per-type and per-client config	Passed	
EWLCJ1712S_DD_12	check and verify per-type anomaly detection with client connectivity	To enable anomaly detection with per-type throttling and connect a client to the AP and verify the show command for client related details	Passed	
EWLCJ1712S_DD_13	check and verify per-client anomaly detection with client connectivity	To enable anomaly detection with per-client throttling and connect a client to the AP and verify the show command for client related details	Passed	
EWLCJ1712S_DD_14	check and verify per-client anomaly detection with more than 2 client connectivity	To enable anomaly detection with per-client throttling and connect 2 or more client to the AP and verify the show command for client related details	Passed	

KPIs for AP Health Via the Controller and AP

Logical ID	Title	Description	Status	Defect ID
EWLCJ1712S_KPI_1	Check Radio reset codes upon eWLC version 17.12.x	To Check Radio reset codes upon eWLC version 17.12.x	Passed	
EWLCJ1712S_KPI_2	Check Radio reset codes upon eWLC version 17.11.x or below	To Check Radio reset codes upon eWLC version 17.11.x	Passed	
EWLCJ1712S_KPI_3	Join AP to eWLC with improper tag config	To Join AP to eWLC with improper tag config	Passed	CSCwf58415
EWLCJ1712S_KPI_4	Change AP mode Local to Flex	To check when AP mode changes from Local to Flex mode	Failed	CSCwf28455, CSCwf87431
EWLCJ1712S_KPI_5	Change AP mode Flex to Local	To check when AP mode changes from Flex to Local mode	Failed	CSCwf94993
EWLCJ1712S_KPI_6	Check with windows client	To Check Tx status when connect with windows client	Passed	
EWLCJ1712S_KPI_7	Check with Android Client	To Check Tx status when connect with Android client	Passed	
EWLCJ1712S_KPI_8	Check with multiple clients at a time	To Check Tx status when connects multiple clients	Passed	CSCwf28527
EWLCJ1712S_KPI_9	Generate Traffic check Tx status	To generate Traffic and check Tx status when client connects	Passed	
EWLCJ1712S_KPI_10	Connect multiple clients to 2.4 GHz radio	To connect multiple clients to 2.4 GHz	Passed	
EWLCJ1712S_KPI_11	Connect multiple clients to 5 GHz radio	To connect multiple clients to 5 GHz radio	Failed	CSCwf72585
EWLCJ1712S_KPI_12	Check Radio reset code when change tag config radio	To check radio reset code when change tag config	Passed	

EWLCJ1712S_KPI_13	Check the radio reset code when change RF tag	To check the radio reset code when change RF tag	Passed	
EWLCJ1712S_KPI_14	Connect Surface client and check radio reset code	Connect surface client and check radio reset code	Passed	
EWLCJ1712S_KPI_15	Move AP from one controller to another	To check radio reset code and Tx when move AP from one controller to	Passed	
EWLCJ1712S_KPI_16	Reboot the AP and check reset codes	To check radio reset code when AP reboots	Passed	
EWLCJ1712S_KPI_17	Compare TX status with Wireshark	To compare TX status with Wireshark	Passed	
EWLCJ1712S_KPI_18	Check Tx Status for Android client with Wi-Fi 6E AP	To check when Android client connected to Wi-Fi 6E AP	Passed	
EWLCJ1712S_KPI_19	Check Tx Status for windows client with Wi-Fi 6E AP	To check Tx Status for windows client with Wi-Fi 6E AP	Passed	
EWLCJ1712S_KPI_20	Check Tx Status for Google pixel 7 pro client with Wi-Fi 6E AP	Check Tx Status for Google pixel 7 pro client with Wi-Fi 6E AP	Passed	
EWLCJ1712S_KPI_21	Check Tx Status for Samsung S22 ultra pro client with Wi-Fi 6E AP	Check Tx Status for Samsung S22 ultra pro client with Wi-Fi 6E AP	Passed	
EWLCJ1712S_KPI_22	Check Tx Status for Apple iPad 4th gen client with Wi-Fi 6E AP	Check Tx Status for Apple iPad 4th gen client with Wi-Fi 6E AP	Passed	

Rogue PMF

Logical ID	Title	Description	Status	Defect ID
EWLCJ1712S_R_PMF_1	Verify whether 2.4GHz Serving radio Rogue Detection or not	To validate BSSID, Channel, SSID, Channel Width, Report count are updated correctly or not for 2.4GHz	Passed	
EWLCJ1712S_R_PMF_2	Verify whether 5GHz Serving radio Rogue Detection or not	To validate BSSID, Channel, SSID, Channel Width, Report count are updated correctly or not for 5GHz	Passed	
EWLCJ1712S_R_PMF_3	Verify whether 6GHz Serving radio Rogue Detection or not	To validate BSSID, Channel, SSID, Channel Width, Report count are updated correctly or not for 6GHz	Passed	
EWLCJ1712S_R_PMF_4	Verify 2.4GHz Aux Radio Rogue Detection	To check 2.4GHz Aux Radio Rogue Detection	Passed	
EWLCJ1712S_R_PMF_5	Verify 5GHz Aux Radio Rogue Detection	To check 5GHz Aux Radio Rogue Detection	Passed	
EWLCJ1712S_R_PMF_6	Verify 6GHz Aux Radio Rogue Detection	To check 6GHz Aux Radio Rogue Detection	Passed	
EWLCJ1712S_R_PMF_7	Verify whether 2.4GHz Serving Radio Rogue client detection or not	To verify whether 2.4GHz Serving Radio Rogue client detection or not	Passed	
EWLCJ1712S_R_PMF_8	Verify whether 5GHz Serving Radio Rogue client detection or not	To verify whether 5GHz Serving Radio Rogue client detection or not	Passed	
EWLCJ1712S_R_PMF_9	Verify whether 6GHz Serving Radio Rogue client detection or not	To verify whether 6GHz Serving Radio Rogue client detection or not	Passed	

EWLCJ1712S_R_PMF_10	Verify Serving Channel AP BSSID containment for Non-PMF Containment	To verify respective rogue serving channel AP bssid and rogue clients detected and contained	Passed	
EWLCJ1712S_R_PMF_11	Verify Different Channel AP BSSID containment for Non-PMF Containment	To verify respective rogue different channel AP bssid and rogue clients detected and contained	Passed	
EWLCJ1712S_R_PMF_12	Verify Serving Channel Rogue Client containment for Non-PMF Containment	To verify respective serving channel rogue clients detected and contained	Passed	
EWLCJ1712S_R_PMF_13	Verify Different Channel Rogue Client containment for Non-PMF Containment	To verify respective different channel rogue clients detected and contained	Passed	
EWLCJ1712S_R_PMF_14	One AP Serving channel Rogue AP BSSID containment	To check One AP Serving channel Rogue AP BSSID containment	Passed	
EWLCJ1712S_R_PMF_15	Multiple AP Serving channel Rogue AP BSSID containment	To check Multiple AP Serving channel Rogue AP BSSID containment	Passed	
EWLCJ1712S_R_PMF_16	Serving channel Rogue Auto containment	To check Serving channel Rogue Auto containment	Passed	
EWLCJ1712S_R_PMF_17	Serving channel Rogue rule-based containment	To check Serving channel Rogue rule-based containment	Passed	
EWLCJ1712S_R_PMF_18	Non-serving channel Rogue client containment	To check Non-serving channel Rogue client containment	Passed	
EWLCJ1712S_R_PMF_19	Serving channel Rogue client containment and channel change	To check Serving channel Rogue client containment and channel change	Passed	

EWLCJ1712S_R_PMF_20	Configure Multi BSSID and verify stats tests	To verify all SSIDs & BSSIDs in rogue beacon is listed in rogue or not	Passed	
EWLCJ1712S_R_PMF_21	Verify statistics radios	To display the statistics for radios	Passed	CSCwf36262
EWLCJ1712S_R_PMF_22	Verify Rogue entries when one of the radio is in monitor mode	To verify Rogue entries when one of the radio is in monitor mode	Passed	
EWLCJ1712S_R_PMF_23	Verify Rogue entries when AP is in monitor mode	To verify Rogue entries when AP is in monitor mode	Passed	
EWLCJ1712S_R_PMF_24	Verify whether Wifi-6E APs Serving Radio Rogue client detection or not	To verify Rogue Client detection for 9164 APs	Passed	
EWLCJ1712S_R_PMF_25	Verify whether Wifi-6E APs Serving Radio Rogue client detection or not	To verify Rogue Client detection for 9166 APs	Passed	

Cisco Catalyst 9800 Wireless Controller for Cloud - Ultra-Low Profile

Logical ID	Title	Description	Status	Defect ID
EWLCJ1712S_UL_1	Installing 9800-CL Ultra low	To Check Whether the 9800-CL ultra low can be installed and able to access without any issues	Passed	
EWLCJ1712S_UL_2	Check the Device type in Dashboard UI and CLI and Navigate to all available pages and tabs	To Check whether the Device type, Max AP allowed, Max Client allowed details are shown correctly in UI and CLI or not and To Navigate and check whether all the available pages and tabs are working properly or not	Passed	
EWLCJ1712S_UL_3	Verify CPU, memory & CPP related stats via CLI	To verify CPU, memory & CPP related stats via CLI	Passed	
EWLCJ1712S_UL_4	Join Access Points and Check the AP status	To Join Access Points to 9800-CL ultra-low and check whether the Access Point are joined or not	Passed	
EWLCJ1712S_UL_5	Configure wlan, tags, policy profiles, AP join profile from UI	To check whether we are able to create wlan, tags, policy profiles, AP join profiles configs from UI without any issues	Passed	
EWLCJ1712S_UL_6	Configure wlan, tags, policy profiles, AP join profile from CLI	To check whether we are able to create wlan, tags, policy profiles, AP join profiles configs from CLI without any issues	Passed	

EWLCJ1712S_UL_7	Check client connectivity with WPA2+psk wlan	To check Client Connectivity in ultra low with wpa2+psk wlan	Passed	
EWLCJ1712S_UL_8	Check client connectivity with WPA2+802.1x wlan	To check Client Connectivity in ultra low with wpa2+802.1x wlan	Passed	
EWLCJ1712S_UL_9	Check client connectivity with WPA3+sae wlan	To check Client Connectivity in ultra low with wpa3+sae wlan	Passed	
EWLCJ1712S_UL_10	Check client connectivity with WPA3+802.1x wlan	To check Client Connectivity in ultra low with wpa3+802.1x wlan	Passed	
EWLCJ1712S_UL_11	Check client connectivity with open security wlan	To check Client Connectivity in ultra low with open security wlan	Passed	
EWLCJ1712S_UL_12	Connect client in 2.4GHz radio	To check Whether clients are able to join in 2.4GHz radio	Passed	
EWLCJ1712S_UL_13	Connect client in 5GHz radio	To check Whether clients are able to join in 5GHz radio	Passed	
EWLCJ1712S_UL_14	Connect client in 6GHz radio	To check Whether clients are able to join in 6GHz radio	Passed	
EWLCJ1712S_UL_15	Client Connectivity with Windows client	To check client connectivity with Windows client with all Security wlan	Passed	
EWLCJ1712S_UL_16	Client Connectivity with MAC client	To check client connectivity with MAC client with all Security wlan	Passed	
EWLCJ1712S_UL_17	Client Connectivity with Android client	To check client connectivity with Android client with all Security wlan	Passed	
EWLCJ1712S_UL_18	Client Connectivity with IOS client	To check client connectivity with IOS client with all Security wlan	Passed	

EWLCJ1712S_UL_19	Client Connectivity with Surface client	To check client connectivity with Surface client with all Security wlan	Passed	
EWLCJ1712S_UL_20	Roam the clients between APs	To roam the client between APs of 9800-CL ultra low	Passed	
EWLCJ1712S_UL_21	Roam the clients between different controllers	To roam the client between 9800-CL ultra low and other controller and verify client details	Passed	
EWLCJ1712S_UL_22	Do Reload and check Controller Behaviour	To Reboot the controller and check whether the controller is acting normal after reload	Passed	
EWLCJ1712S_UL_23	Do Upgrade, downgrade and check the controller Behaviour	To do upgrade and downgrade in controller and check whether the Controller is acting normal or not	Failed	CSCwf51279
EWLCJ1712S_UL_24	Upgrading controller by all possible ways	To Upgrade the controller by desktop mode, ftp mode, tftp mode and check whether all modes are working fine and controller comes up as normal	Failed	CSCwf71287
EWLCJ1712S_UL_25	Rollback controller and check controller behaviour	To rollback the controller to previous committed image and check whether the controller comes up as normal	Passed	
EWLCJ1712S_UL_26	Check controller behaviour after adding and configured from DNAC	To Connect the controller with DNAC and provision with some config changes from DNAC and check the behaviour of the controller	Passed	

EWLCJ1712S_UL_27	Connect multiple client to the controller and check the memory, CPU usages	To Connect multiple client to the controller and check the memory, CPU usages	Passed	
------------------	--	---	--------	--

New Countries Supporting 6-GHz Radio Band

Logical ID	Title	Description	Status	Defect ID
EWLCJ1712S_6E_1	Join AP 9166I/ AP9164I to one controller	Adding AP 9166I/ AP9164I to the controller using CLI.	Passed	
EWLCJ1712S_6E_2	Create AP Join profile with one country code	Configure AP Join Profile with country code	Passed	
EWLCJ1712S_6E_3	Create Tags & Mapping to AP.	Configuring Tags & mapping to AP.	Passed	
EWLCJ1712S_6E_4	Configure country code for AP.	Configuring country code & check whether AP is in 6GHZ radio frequency	Passed	CSCwf69055
EWLCJ1712S_6E_5	Configure WLAN with WPA Security and PSK Auth	Verify able to Config WLAN with WPA Security and PSK Auth	Passed	
EWLCJ1712S_6E_6	Configure WLAN with WPA-2 security and PSK Auth	verify able to config WLAN with WPA-2 security and PSK Auth	Passed	
EWLCJ1712S_6E_7	Configuring WLAN with WPA3-Dot1x security	verify able to config WLAN with WPA3-Dot1x security	Passed	
EWLCJ1712S_6E_8	Connect with an android client with WPA3 - Dot1x configured WLAN	To Verify with an android client with WPA3 - Dot1x configured WLAN	Passed	
EWLCJ1712S_6E_9	Connect with an IOS client with WPA3 - Dot1x configured WLAN	To Verify with an IOS client with WPA3 - Dot1x configured WLAN	Passed	
EWLCJ1712S_6E_10	Connect with an windows client with WPA3 - Dot1x configured WLAN	To Verify with an windows client with WPA3 - Dot1x configured WLAN	Passed	

EWLCJ1712S_6E_11	Connect with an MAC client with WPA3 - Dot1x configured WLAN	To Verify with an MAC client with WPA3 - Dot1x configured WLAN	Passed	
EWLCJ1712S_6E_12	Connect with an Surface client with WPA3 - Dot1x configured WLAN	To Verify with an surface client with WPA3 - Dot1x configured WLAN	Passed	
EWLCJ1712S_6E_13	Connect with an Google pixel 7 pro client with WPA3 - Dot1x configured WLAN	To Verify with an Google pixel 7 pro client with WPA3 - Dot1x configured WLAN	Passed	
EWLCJ1712S_6E_14	Connect with an Samsung S22 ultra client with WPA3 - Dot1x configured WLAN	To Verify with an Samsung S22 ultra client with WPA3 - Dot1x configured WLAN	Passed	
EWLCJ1712S_6E_15	Connect with an Apple iPad 4th gen client with WPA3 - Dot1x configured WLAN	To Verify with an Apple iPad 4th gen client with WPA3 - Dot1x configured WLAN	Passed	
EWLCJ1712S_6E_16	Configuring WLAN with WPA3-SAE security	verify able to config WLAN with WPA3-SAE security	Passed	CSCwf66220
EWLCJ1712S_6E_17	Connect with an android client with WPA-3 security	To Verify with an android client with WPA-3 security	Passed	
EWLCJ1712S_6E_18	Connect with an IOS client with WPA-3 security	To Verify with an IOS client with WPA-3 security	Passed	
EWLCJ1712S_6E_19	Connect with an windows client with WPA-3 security	To Verify with an windows client with WPA-3 security	Passed	
EWLCJ1712S_6E_20	Connect with an MAC client with WPA-3 security	To Verify with an MAC client with WPA-3 security	Passed	
EWLCJ1712S_6E_21	Connect with an Surface client with WPA-3 security	To Verify with an surface client with WPA-3 security	Passed	
EWLCJ1712S_6E_22	Connect with an Google pixel 7 pro client with WPA3 -SAE security.	To Verify with an Google pixel 7 pro client with WPA3 -SAE security.	Passed	

EWLCJ1712S_6E_23	Connect with an Samsung S22 ultra client with WPA3 -SAE security.	To Verify with an Samsung S22 ultra client with WPA3 -SAE security.	Passed	
EWLCJ1712S_6E_24	Connect with an Apple iPad 4th gen client with WPA3 -SAE security.	To Verify with an Apple iPad 4th gen client with WPA3 -SAE security.	Passed	
EWLCJ1712S_6E_25	Configure Roaming between controllers	To configure Roaming between controllers	Passed	CSCwf64441
EWLCJ1712S_6E_26	Configure AP in flex mode	To verify whether able to config AP in Flex mode.	Passed	CSCwf53826
EWLCJ1712S_6E_27	Configure AP in Sniffer mode	To verify whether able to config AP in Sniffer. mode.	Passed	

Embedded Packet Capture Enhancement

Logical ID	Title	Description	Status	Defect ID
EWLCJ1712S_EPC_1	Execute all debug commands for EPC	To execute all debug commands for EPC	Passed	
EWLCJ1712S_EPC_2	Configure with buffer file, check EPC buffer file created or not	To configure with buffer file, check EPC buffer file created or not	Failed	CSCwf47716
EWLCJ1712S_EPC_3	Configure with buffer file which size is more the free size of the local file system	To check if there is warning message and start failed	Passed	
EWLCJ1712S_EPC_4	Configure with buffer file with liner and circular type, check capturing packet	To configure with buffer file with liner and circular type, to check capturing packet	Passed	
EWLCJ1712S_EPC_5	Configure buffer files and change to memory	To check by show command and re-start epc capture the buffer should be re-init	Passed	
EWLCJ1712S_EPC_6	Configure memory and change to buffer files	To check by show command and re-start epc capture the memory should be re-init	Passed	
EWLCJ1712S_EPC_7	Configure buffer files and re-configure the file number/ file size	To reconfigure the file number/file size	Passed	
EWLCJ1712S_EPC_8	Configure with buffer file and no EPC session	To check epc delete successfully and buffer files deleted	Passed	
EWLCJ1712S_EPC_9	Configure with buffer file and show buffer Command	To show monitor capture buffer [brief dump]	Passed	

EWLCJ1712S_EPC_10	Configure with buffer file and export buffer, and the total files size > 100 MB	To configure with buffer file and export buffer, and the total files size > 100 MB	Passed	
EWLCJ1712S_EPC_11	Configure with buffer file, total files size< 100MB	To configure with buffer file, total files size< 100MB	Passed	
EWLCJ1712S_EPC_12	Configure with memory and export	To configure with memory and export	Passed	
EWLCJ1712S_EPC_13	Configure with buffer file and export to local path	To configure with buffer file and export to local path	Passed	
EWLCJ1712S_EPC_14	Configure with buffer file and clear epc buffer	To check buffer by show command	Passed	
EWLCJ1712S_EPC_15	Configure continuous export	To configure continuous export	Passed	
EWLCJ1712S_EPC_16	Configure continuous export and memory buffer and start session	To check packet export before buffer exported	Passed	
EWLCJ1712S_EPC_17	Configure continuous export and memory buffer and stop session	To check the rest of packets in the buffer exported	Passed	
EWLCJ1712S_EPC_18	Configure continuous export and file buffer and start session	To check the packets exported	Passed	
EWLCJ1712S_EPC_19	Configure continuous export and file buffer and stop session	To check rest of the packets exported	Passed	
EWLCJ1712S_EPC_20	Configure filter one inner mac and show pd command and capture packets	To send traffic and verify the traffic with inner mac is captured	Passed	
EWLCJ1712S_EPC_21	Configure filter multiple inner mac addresses and capture packets	To configure filter multiple inner mac addresses and capture packets	Passed	

EWLCJ1712S_EPC_22	Configure no filter inner mac in one line and show epc	To capture packets	Passed	
EWLCJ1712S_EPC_23	Connect Windows client and capture packet	To connect Windows client and capture packet	Passed	
EWLCJ1712S_EPC_24	Connect Android client and capture packet	To connect Android client and capture packet	Passed	CSCwf61491
EWLCJ1712S_EPC_25	Connect MAC client and capture packet	To connect MAC client and capture packet	Passed	
EWLCJ1712S_EPC_26	Connect IOS client and capture packet	To connect IOS client and capture packet	Passed	
EWLCJ1712S_EPC_27	Connect Go Plus client and capture packet	To connect Go Plus client and capture packet	Passed	
EWLCJ1712S_EPC_28	Join Wi-Fi 6E 9164 AP, connect capable clients and capture packets	To connect WiFi-6E capable client and capture packets	Passed	
EWLCJ1712S_EPC_29	Join Wi-Fi 6E 9166 AP, connect capable clients and capture packets	To connect WiFi-6E capable client and capture packets	Passed	



Regression Features

- 11ax Advanced traffic based scheduler for scheduling SU, OFDMA and MU traffic on 9105/9115/9120, on page 53
- 11ax BSS Coloring(OBSS PD) on 9105/9115/9120 APs, on page 57
- Ability to configure XOR radio for APs in Sniffer mode, on page 59
- Calendar profile enhancements, on page 61
- Device classification enhancement, on page 63
- Dot1x+EWA on MAC Failure, on page 66
- EasyPSK Phase 2 : WLAN Client Onboarding without Registration (local switching), on page 69
- Out-of-Band AP Image Download, on page 73
- Enable AP fallback to primary, secondary or tertiary controllers under AP Join Profile, on page 77
- Enhancement in client steering during Rolling AP Upgrade, on page 80
- EWC support for WiFi6 APs, on page 83
- Reload Reason History, on page 85
- HA SSO RMI, on page 87
- Intelligent AP auditing on WLC, on page 90
- Intelligent Capture OTA Sniffer Device Work, on page 93
- Convert Redundant 2.4-GHz Radios to Monitor Mode, on page 96
- IP Theft on 9800 WLC [Central Mode of operation], on page 99
- N+1 Hitless Upgrade - Site based Upgrade, on page 104
- Network Service Analytics : DNS/DHCP/AAA server reachability via IPSLA and Failure reasons for AAA/DHCP, on page 107
- New Device Support for 9164/9166 AP, on page 109
- OEAP URL based ACLs for split tunnel, on page 114
- Open RRM , on page 116
- Per client Bidirectional rate limiting, flex local switching, on page 118
- Wireless Client Latency Statistics, on page 121
- PER SSID filtering for assurance on Cat9800, on page 124
- Provide alert mechanism on web-ui for critical events on controller, on page 127
- PSK + Multi Auth Support for Guest, on page 128
- Rolling AP Upgrade Enhancements, on page 130
- Scheduling of SSID broadcast, on page 132
- Smart Licencing , on page 134
- SSID per radio on Dual 5G, on page 135
- Secure Data Wipe , on page 138

- [To share Client Delete reason code at AP to controller, on page 144](#)
- [New AAA Command, on page 147](#)
- [Wireless Troubleshooting on DNAC - AP Troubleshooting Workflow, on page 149](#)
- [Wireless Troubleshooting on DNAC - Multi WLC Log collection, on page 151](#)
- [WPA3 SAE client exclusion optimization for local mode, on page 153](#)
- [WPA3 Supporting 'Transition Disable', on page 154](#)
- [SRCFD, on page 157](#)

11ax Advanced traffic based scheduler for scheduling SU, OFDMA and MU traffic on 9105/9115/9120

Logical ID	Title	Description	Status	Defect ID
EWLCJ1712S_Reg_173	Configuring 11ax Access Points, Channel width, OFDMA & radio parameters for 5GHz band.	To configure 11ax Access Points, Channel width, OFDMA & radio parameters for 5GHz band.	Passed	
EWLCJ1712S_Reg_174	Configuring 11ax Access Points, Channel width, OFDMA & radio parameters for 2.4GHz band.	To configure 11ax Access Points, Channel width, OFDMA & radio parameters for 2.4GHz band.	Passed	
EWLCJ1712S_Reg_175	Monitor traffic with 11ax Android Client connected.	To verify OFDMA details with 11ax Android Client connected.	Passed	
EWLCJ1712S_Reg_176	Monitor traffic with 11ax iPhone Client connected.	To verify OFDMA details with 11ax iPhone Client connected.	Passed	
EWLCJ1712S_Reg_177	Monitor traffic with non 11ax Windows Client connected.	To verify OFDMA details with non 11ax Windows Client connected.	Passed	
EWLCJ1712S_Reg_178	Monitor traffic with non 11ax MAC Client connected.	To verify OFDMA details with non 11ax MAC Client connected.	Passed	
EWLCJ1712S_Reg_179	Monitor traffic by connecting Client to 2.4GHz radio.	To verify OFDMA details by connecting Client to 2.4GHz radio.	Passed	
EWLCJ1712S_Reg_180	Verify OFDMA details with Client connecting to WPA2 - PSK configured WLAN	To verify OFDMA details with Client connecting to WPA2 - PSK configured WLAN	Passed	

EWLCJ1712S_Reg_181	Verify OFDMA details with Client connecting to WPA3 - Dot1x configured WLAN	To verify OFDMA details with Client connecting to WPA3 - Dot1x configured WLAN	Passed	
EWLCJ1712S_Reg_182	Connect upto 8 Clients and monitor DL/UL OFDMA statistics	To connect upto 8 Clients and monitor DL/UL OFDMA statistics	Passed	
EWLCJ1712S_Reg_183	Modify spatial stream config to 1 stream and monitor OFDMA statistics.	To modify spatial stream config to 1 stream and monitor OFDMA statistics.	Passed	
EWLCJ1712S_Reg_184	Modify spatial stream config to 2 streams and monitor OFDMA statistics.	To modify spatial stream config to 2 streams and monitor OFDMA statistics.	Passed	
EWLCJ1712S_Reg_185	Modify spatial stream config to 3 streams and monitor OFDMA statistics.	To modify spatial stream config to 3 streams and monitor OFDMA statistics.	Passed	
EWLCJ1712S_Reg_186	Modify spatial stream config to 4 streams and monitor OFDMA statistics.	To modify spatial stream config to 4 streams and monitor OFDMA statistics.	Passed	
EWLCJ1712S_Reg_187	Enable video stream and monitor DL/UL OFDMA statistics	To enable video stream and monitor DL/UL OFDMA statistics	Passed	
EWLCJ1712S_Reg_188	Modify MCS data rates & monitor OFDMA stats with 11ax Android Client connected.	To modify MCS data rates & monitor OFDMA stats with 11ax Android Client connected.	Passed	
EWLCJ1712S_Reg_189	Configuring 11ax Access Points, Channel width, 11ax MU & radio parameters for 5GHz band.	To configure 11ax Access Points, Channel width, 11ax MU & radio parameters for 5GHz band.	Passed	
EWLCJ1712S_Reg_190	Configuring 11ax Access Points, Channel width, 11ax MU & radio parameters for 2.4GHz band.	To configure 11ax Access Points, Channel width, 11ax MU & radio parameters for 2.4GHz band.	Passed	

EWLCJ1712S_Reg_191	Monitor traffic with 11ax Android Client connected.	To verify 11ax MU details with 11ax Android Client connected.	Passed	
EWLCJ1712S_Reg_192	Monitor traffic with 11ax iPhone Client connected.	To verify 11ax MU details with 11ax iPhone Client connected.	Passed	
EWLCJ1712S_Reg_193	Monitor traffic with non 11ax Windows Client connected.	To verify 11ax MU details with non 11ax Windows Client connected.	Passed	
EWLCJ1712S_Reg_194	Monitor traffic with non 11ax MAC Client connected.	To verify 11ax MU details with non 11ax MAC Client connected.	Passed	
EWLCJ1712S_Reg_195	Monitor traffic by connecting Client to 2.4GHz radio.	To verify 11ax MU details by connecting Client to 2.4GHz radio.	Passed	
EWLCJ1712S_Reg_196	Verify 11ax MU details with Client connecting to WPA2 - PSK configured WLAN	To verify 11ax MU details with Client connecting to WPA2 - PSK configured WLAN	Passed	
EWLCJ1712S_Reg_197	Verify 11ax MU details with Client connecting to WPA3 - Dot1x configured WLAN	To verify 11ax MU details with Client connecting to WPA3 - Dot1x configured WLAN	Passed	
EWLCJ1712S_Reg_198	Connect upto 8 Clients and monitor DL/UL 11ax MU statistics	To connect upto 8 Clients and monitor DL/UL 11ax MU statistics	Passed	
EWLCJ1712S_Reg_199	Check 11ax MU stats with roaming Client scenario	Check 11ax MU stats with roaming Client scenario	Passed	
EWLCJ1712S_Reg_200	Monitor 11ax traffic over mixed mode with both OFDMA and SU, MU traffic	To monitor 11ax traffic over mixed mode with both OFDMA and SU, MU traffic	Passed	

EWLCJ1712S_Reg_201	Monitor 11ax traffic over mixed mode with both OFDMA and SU, MU traffic for AP models - 9105, 9115, 9120	To monitor 11ax traffic over mixed mode with both OFDMA and SU, MU traffic - 9105, 9115, 9120	Passed	
--------------------	--	---	--------	--

11ax BSS Coloring(OBSS PD) on 9105/9115/9120 APs

Logical ID	Title	Description	Status	Defect ID
EWLCJ1712S_Reg_202	Enable Global OBSS PD for 5GHz band	To verify whether the OBSS PD enable or not for 5 GHz band	Passed	CSCwf36254
EWLCJ1712S_Reg_203	Disable Global OBSS PD for 5GHz band	To Check whether the OBSS PD disable or not for 5 GHz	Passed	
EWLCJ1712S_Reg_204	Enable Global OBSS PD for 2.4 GHz band	To verify whether the OBSS PD enable or not for 2.4 GHz band	Passed	
EWLCJ1712S_Reg_205	Disable Global OBSS PD for 2.4 GHz band	To Check whether the OBSS PD disable or not for 2.4 GHz	Passed	
EWLCJ1712S_Reg_206	Set OBSS PD value for 5 GHz band	To verify whether the values set for 5 GHz band or not	Passed	
EWLCJ1712S_Reg_207	Set OBSS PD value for 2.4 GHz band	To verify whether the values set for 2.4 GHz band or not	Passed	
EWLCJ1712S_Reg_208	Creating RF Profile with OBSS PD enabled for 5/2.4 GHz band	To Validate whether RF Profile created with OBSS PD enable for 5/2.4 GHz band	Passed	
EWLCJ1712S_Reg_209	Disabling OBSS PD in RF Profile	To Validate whether RF Profile is created with OBSS PD enable for 5/2.4 GHz band	Passed	
EWLCJ1712S_Reg_210	Viewing OBSS PD supports in different AP models	To checking the OBSS PD supports in different AP models	Passed	
EWLCJ1712S_Reg_211	Configuring BSS color details in AP & controller CLIs	To Verify Configured color details is reflected in AP and Controller CLIs	Passed	

EWLCJ1712S_Reg_212	Checking the BSS color details are retained after AP and Controller reload	To Check whether the BSS color retained after AP & Controller reload	Passed	
EWLCJ1712S_Reg_213	Verify enable/disable of BSS coloring on radio is reflected in management packets	To verify whether the BSS color is reflected in Management packets or not	Passed	
EWLCJ1712S_Reg_214	Verifying OBSS PD with inter roaming Client using different radio	To check whether OBSS PD is enable or not , when different radio Clients are roaming between controllers	Passed	
EWLCJ1712S_Reg_215	Verifying OBSS PD enabled with inter roaming Client using same radio	To check whether OBSS PD enable or not , when same radio Clients are roaming between controllers	Passed	
EWLCJ1712S_Reg_216	Verifying OBSS PD enabled with Intra Client roaming by using 9115AP	To verify whether OBSS PD enabled with Client roaming between AP's or not	Passed	
EWLCJ1712S_Reg_217	Changing 9115 AP mode from local to Flex connect & check the BSS coloring Configuration	To change the mode of AP from local mode to Flexconnect mode and check the BSS coloring configuration in 9115 AP	Passed	
EWLCJ1712S_Reg_218	Changing 9115 AP mode from flex to local & check the BSS coloring Configuration	To change the mode of AP from flex mode to local mode and check the BSS coloring configuration in 9115 AP	Passed	

Ability to configure XOR radio for APs in Sniffer mode

Logical ID	Title	Description	Status	Defect ID
EWLCJ1712S_Reg_401	Configure Sniffer for Dual band radios	To configure Sniffer for Dual band radios	Passed	
EWLCJ1712S_Reg_402	Change the XOR radio assignment mode to Client saving monitor Sniffer	To verify XOR radio assignment mode changed or not	Passed	
EWLCJ1712S_Reg_403	Verify AP mode is Sniffer after AP reload	To verify AP mode after reload	Passed	
EWLCJ1712S_Reg_404	Configure Sniffer for Dual band radios through CLI	To configure Sniffer for Dual band radios through CLI	Passed	
EWLCJ1712S_Reg_405	Validate unable to set sniffer details error message	To validate unable to set sniffer details error message	Passed	
EWLCJ1712S_Reg_406	XOR radio band switching from 2.4 GHz to 5 GHz	To capture Sniffer from 2.4 GHz to 5 GHz	Passed	
EWLCJ1712S_Reg_407	XOR radio band switching from 5 GHz to 2.4 GHz	To capture Sniffer from 5 GHz to 2.4 GHz	Passed	
EWLCJ1712S_Reg_408	Perform band switching multiple times and capture packets	To perform band switching multiple times and to capture packets	Passed	
EWLCJ1712S_Reg_409	Perform band switching every one minute for 10 times	To perform band switching every one minute for 10 times	Passed	
EWLCJ1712S_Reg_410	Change mode from local to flex and capture network activity	To capture network activity when AP mode changed from local to flex	Passed	
EWLCJ1712S_Reg_411	Change mode from flex to local and capture network activity	To capture network activity when AP mode changed from flex to local	Passed	
EWLCJ1712S_Reg_412	Check whether alert is triggered or not when AP mode changed to Sniffer	To check whether alert is triggered or not when AP mode changed to Sniffer	Passed	

EWLCJ1712S_Reg_413	Check whether alert is triggered or not when Sniffer details modified	To check whether alert is triggered or not when Sniffer details modified	Passed	
EWLCJ1712S_Reg_414	Verify Sniffer Channel range	To verify Sniffer Channel range	Passed	

Calendar profile enhancements

Logical ID	Title	Description	Status	Defect ID
EWLCJ1712S_Reg_1	Configure Daily Calendar Profile	Check whether able to configure Daily Calendar Profile	Passed	
EWLCJ1712S_Reg_2	Configure Weekly Calendar Profile	Check whether able to configure Weekly Calendar Profile	Passed	
EWLCJ1712S_Reg_3	Configure Monthly Calendar Profile	Check whether able to configure Monthly Calendar Profile	Passed	
EWLCJ1712S_Reg_4	Configure Daily, Weekly and Monthly Calendar Profile through CLI	Check whether able to configure Daily, Weekly and Monthly Calendar Profile through CLI	Passed	
EWLCJ1712S_Reg_5	MAP Calendar Profile to a Policy Profile	Check whether able to MAP Calendar Profile to a Policy Profile	Passed	
EWLCJ1712S_Reg_6	Try deleting the calendar profile when it is already attached to the policy profile	Check whether able to try deleting the calendar profile when it is already attached to the policy profile	Passed	
EWLCJ1712S_Reg_7	While the calendar profile is attached to policy profile, update the timer range for calendar profile	Check whether able to update the timer range for calendar profile	Passed	
EWLCJ1712S_Reg_8	Delete the calendar profile from the policy profile	Check whether able to delete the calendar profile from the policy profile	Passed	
EWLCJ1712S_Reg_9	MAP multiple calendar profiles to a Policy Profile	Check whether able to MAP multiple calendar profiles to a Policy Profile	Passed	CSCwf68764

EWLCJ1712S_Reg_10	Verify Windows Client is able to connect to the WLAN only during the configured times	Check whether able to verify Windows Client is able to connect to the WLAN only during the configured times	Passed	
EWLCJ1712S_Reg_11	Verify Android Client is able to connect to the WLAN only during the configured times	Check whether able to verify Android Client is able to connect to the WLAN only during the configured times	Passed	
EWLCJ1712S_Reg_12	Verify IOS Client is able to connect to the WLAN only during the configured times	Check whether able to verify IOS Client is able to connect to the WLAN only during the configured times	Passed	
EWLCJ1712S_Reg_13	Verify MAC Client is able to connect to the WLAN only during the configured times	Check whether able to verify MAC Client is able to connect to the WLAN only during the configured times	Passed	
EWLCJ1712S_Reg_14	Verify Surface Client is able to connect to the WLAN only during the configured times	Check whether able to verify Surface Client is able to connect to the WLAN only during the configured times	Passed	
EWLCJ1712S_Reg_15	Verify Client is able to connect to the WLAN in Flex mode only during the configured times	Check whether able to verify Client is able to connect to the WLAN in Flex mode only during the configured times	Passed	
EWLCJ1712S_Reg_16	Verify Client is able to connect to the WLAN in Inter/Intra roaming connectivity	Check whether able to Verify Client is able to connect to the WLAN in Inter/Intra roaming connectivity.	Passed	

Device classification enhancement

Logical ID	Title	Description	Status	Defect ID
EWLCJ1712S_Reg_689	Check whether the Device Classification is enabled in 9800-L controller or not	To check whether the Device Classification is enabled in 9800-L controller or not	Passed	
EWLCJ1712S_Reg_690	Check whether the Device Classification is enabled in 9800-CL controller or not	To check whether the Device Classification is enabled in 9800-CL controller or not	Passed	
EWLCJ1712S_Reg_691	Check whether the Device Classification is enabled in 9800-80 controller or not	To check whether the Device Classification is enabled in 9800-80 controller or not	Passed	
EWLCJ1712S_Reg_692	Disable Device Classification in 9800-L controller and check whether the Devices are getting classified or not	To disable Device Classification in 9800-L controller and check whether the Devices are getting classified or not	Passed	
EWLCJ1712S_Reg_693	Disable Device Classification in 9800-CL controller and check whether the Devices are getting classified or not	To disable Device Classification in 9800-CL controller and check whether the Devices are getting classified or not	Passed	
EWLCJ1712S_Reg_694	Disable Device Classification in 9800-80 controller and check whether the Devices are getting classified or not	To disable Device Classification in 9800-80 controller and check whether the Devices are getting classified or not	Passed	
EWLCJ1712S_Reg_695	Enable Device Classification in 9800-L controller UI and check the changes in Device after device classification	To enable Device Classification in 9800-L controller UI and check the changes in Device after device classification	Passed	

EWLCJ1712S_Reg_696	Enable Device Classification in 9800-CL controller UI and check the changes in Device after device classification	To enable Device Classification in 9800-CL controller UI and check the changes in Device after device classification	Passed	
EWLCJ1712S_Reg_697	Enable Device Classification in 9800-80 controller UI and check the changes in Device after device classification	To enable Device Classification in 9800-80 controller UI and check the changes in Device after device classification	Passed	
EWLCJ1712S_Reg_698	Disable & Enable Device Classification in 9800-L controller CLI and check the changes in Device after device classification	To disable & enable Device Classification in 9800-L controller CLI and check the changes in Device after device classification	Passed	
EWLCJ1712S_Reg_699	Disable & Enable Device Classification in 9800-CL controller CLI and check the changes in Device after device classification	To disable & enable Device Classification in 9800-CL controller CLI and check the changes in Device after device classification	Passed	
EWLCJ1712S_Reg_700	Disable & Enable Device Classification in 9800-80 controller CLI and check the changes in Device after device classification	To disable & enable Device Classification in 9800-80 controller CLI and check the changes in Device after device classification	Passed	
EWLCJ1712S_Reg_701	Check for the Device classification file from the9800-L Controller and verify the text file	Check for the Device classification file from the9800-L Controller and verify the text file	Passed	

EWLCJ1712S_Reg_702	Check for the Device classification file from the9800-CL Controller and verify the text file	Check for the Device classification file from the9800-CL Controller and verify the text file	Passed	
EWLCJ1712S_Reg_703	Check for the Device classification file from the9800-80 Controller and verify the text file	Check for the Device classification file from the9800-80 Controller and verify the text file	Passed	

Dot1x+EWA on MAC Failure

Logical ID	Title	Description	Status	Defect ID
EWLCJ1712S_Reg_219	Verifying the Dot1x+EWA support with MAC failure.	To verify the Dot1x+EWA support with MAC filter Configuration.	Passed	
EWLCJ1712S_Reg_220	Verifying the Dot1x+EWA support with MAC filter by connecting the windows Client.	To verify the Client packets by connecting the windows Client to dot1x and EWA supported SSID	Passed	
EWLCJ1712S_Reg_221	Verifying the Dot1x+EWA support with MAC filter by connecting the Android Client.	To verify the Client packets by connecting the Android Client to Dot1x+EWA supported SSID	Passed	
EWLCJ1712S_Reg_222	Verifying the Dot1x+EWA support with MAC filter by connecting the MAC os Client.	To verify the Client packets by connecting the MAC os Client to Dot1x+EWA supported SSID	Passed	
EWLCJ1712S_Reg_223	Verifying the Dot1x+EWA support with MAC filter by connecting the samsung10 Client.	To verify the Client packets by connecting the S10 os Client to Dot1x+EWA supported SSID	Passed	
EWLCJ1712S_Reg_224	Verifying the Dot1x+EWA support with Wpa2 security MAC failure	To verify the Dot1x+EWA Configuration with wpa2 supported SSID	Passed	
EWLCJ1712S_Reg_225	Verifying the Dot1x+EWA support with Wpa3 security .	To verify the Dot1x+EWA Configuration with wpa3 supported SSID	Passed	

EWLCJ1712S_Reg_226	Validating the Dot1x+EWA support and Layer 2 On MAC filter	To verify the Dot1x+EWA support and Layer3 On MAC filter failure	Passed	
EWLCJ1712S_Reg_227	verifying the Dot1x+EWA support with Layer3 Splash page web redirect.	To verify the Dot1x+EWA support with Layer3 Splash page web redirect.	Passed	
EWLCJ1712S_Reg_228	Verifying the EWA support with 802.1x-SHA256 security.	To verify the EWA support with 802.1x-SHA256 security for the different Clients.	Passed	
EWLCJ1712S_Reg_229	Verifying the Dot1x+EWA support with Ft	To verify the Dot1x+EWA support with +Ft for the different Clients.	Passed	
EWLCJ1712S_Reg_230	Verifying the Dot1x+EWA support with Intra Client roaming by using 9115AP	To verify the Intra Client roaming by using Dot1x+EWA support with 9115AP	Passed	
EWLCJ1712S_Reg_231	Verifying the Dot1x+EWA security with Inter WLC Roaming	To verify inter WLC Roaming between WLANs with Dot1x+EWA support	Passed	
EWLCJ1712S_Reg_232	Verifying the Dot1x+EWA support with Roaming between Controllers with Different Radio types	To verify whether Client is Moving between Controllers with Different Radio type or not with dot1x+EWA WLAN.	Passed	
EWLCJ1712S_Reg_233	Verifying the Dot1x+EWA support Roaming between Controllers with same Radio types	To verify whether Client is Moving between Controllers with same Radio type or not with dot1x+EWA WLAN.	Passed	

EWLCJ1712S_Reg_234	Verifying the Dot1x+EWA support with local auth and local switching.	To verify the Dot1x+EWA security in local auth and local switching.	Passed	
EWLCJ1712S_Reg_235	Verifying the Dot1x+EWA support with MAC filter by connecting the MS GO2 Client.	To verify the Client packets by connecting the MS GO2 Client to dot1x and EWA supported SSID	Passed	
EWLCJ1712S_Reg_236	Verifying the Dot1x+EWA support with MAC filter by connecting the Sleeping Client	To verify the Client packets by connecting the sleeping Client to dot1x and EWA supported SSID	Passed	
EWLCJ1712S_Reg_237	Validate Client association in DNAC	To verify Client details showing or not in DNAC	Passed	
EWLCJ1712S_Reg_238	Validate Client association in PI	To verify Client details showing or not in PI	Passed	
EWLCJ1712S_Reg_239	Configure WLAN with EWA in DNAC & check Client details in Cisco space	To verify WLAN created or not in DNAC	Passed	

EasyPSK Phase 2 : WLAN Client Onboarding without Registration (local switching)

Logical ID	Title	Description	Status	Defect ID
EWLCJ1712S_Reg_340	Verify you can configure a WLAN with easy psk feature on it when AAA override is set on the associated policy profile. Verify no syslog is thrown.	To Verify whether you can configure a WLAN with easy psk feature on it when AAA override is set on the associated policy profile. Verify no syslog is thrown.	Passed	
EWLCJ1712S_Reg_341	Verify that if you configure a WLAN with easy psk feature and its associated policy profile does not Have the AAA override set, a syslog is thrown.	To Verify that whether you configure a WLAN with easy psk feature and its associated policy profile does not Have the AAA override set, a syslog is thrown.	Passed	
EWLCJ1712S_Reg_342	Verify that it is not possible to configure Easy PSK if one of the following option is set on the same WLAN: mPSK PSK key WPA3 CCKM dot1x	To Verify that it is not possible to configure Easy PSK if one of the following option is set on the same WLAN: mPSK PSK key WPA3 CCKM dot1x	Passed	
EWLCJ1712S_Reg_343	Verify that it is not possible to configure any of the following option on a WLAN where Easy PSK is enabled mPSK PSK key WPA3 CCKM dot1x	To Verify that it is not possible to configure any of the following option on a WLAN where Easy PSK is enabled mPSK PSK key WPA3 CCKM dot1x	Passed	

EWLCJ1712S_Reg_344	Verify that when configuring the feature on a WLAN that is pushed on an AP configured in flex mode, a syslog is thrown.	To Verify that when configuring the feature on a WLAN that is pushed on an AP configured in flex mode, a syslog is thrown.	Passed	
EWLCJ1712S_Reg_345	Verify that the feature can't be configured on a EWC device	To Verify that the feature can't be configured on a EWC device	Passed	
EWLCJ1712S_Reg_346	Verify that if the feature is configured together with local authentication, a syslog is thrown.	To Verify that if the feature is configured together with local authentication, a syslog is thrown.	Passed	
EWLCJ1712S_Reg_347	Verify that if the feature is configured together with local switching, a syslog is thrown.	To Verify that if the feature is configured together with local switching, a syslog is thrown.	Passed	
EWLCJ1712S_Reg_348	With a valid configuration, save the configuration and perform a reboot. Verify that the configuration is kept and valid, and no syslog is thrown.	To verify with a valid configuration, save the configuration and perform a reboot. Verify that the configuration is kept and valid, and no syslog is thrown.	Passed	
EWLCJ1712S_Reg_349	Remove the Easy PSK feature from the configured WLAN in the previous test through yang. Verify that the same config can be observed in the CLI.	To Remove the Easy PSK feature from the configured WLAN in the previous test through yang. Verify that the same config can be observed in the CLI.	Passed	

EWLCJ1712S_Reg_350	Configure a new WLAN with easy PSK through SNMP. Verify that the configuration is effective through CLI. Remove the easy PSK from the WLAN and verify in the CLI that the same config is no longer Applied.	To Configure a new WLAN with easy PSK through SNMP. Verify that the configuration is effective through CLI. Remove the easy PSK from the WLAN and verify in the CLI that the same config is no longer Applied.	Passed	
EWLCJ1712S_Reg_351	Configure a WLAN with easy PSK through CLI. Verify that the configuration is effective through SNMP.	To Configure a WLAN with easy PSK through CLI. Verify that the configuration is effective through SNMP.	Passed	
EWLCJ1712S_Reg_352	Configure a WLAN with Easy PSK feature through the CLI. Verify that you can get the same configuration through yang.	To Configure a WLAN with Easy PSK feature through the CLI. Verify that you can get the same configuration through yang.	Passed	
EWLCJ1712S_Reg_353	Configure a WLAN with easy PSK, the Radius with two valid PSKs. Connect one Client with the first PSK. Verify the exchange between the controller and the Radius with a capture (verify new AAA attributes are filled correctly). Verify that the Client can ping the gateway	To Configure a WLAN with easy PSK, the Radius with two valid PSKs. Connect one Client with the first PSK. Verify the exchange between the controller and the Radius with a capture (verify new AAA attributes are filled correctly). Verify that the Client can ping the gateway	Passed	CSCwf72439

EWLCJ1712S_Reg_354	Following the previous test, disconnect the Client and connect it again using the second PSK. Verify again the Radius exchange and the Client can reach Run state and can ping the gateway.	Following the previous test, disconnect the Client and connect it again using the second PSK. Verify again the Radius exchange and the Client can reach Run state and can ping the gateway.	Passed	
EWLCJ1712S_Reg_355	Configure 16 WLANs with easy PSK enabled. Connect one Client to each WLAN. Verify each Client reaches Run state and can ping the gateway.	To Configure 16 WLANs with easy PSK enabled. Connect one Client to each WLAN. Verify each Client reaches Run state and can ping the gateway.	Passed	
EWLCJ1712S_Reg_356	Configure an easy psk WLAN using a AAA server that is not reachable. Verify that the Client can't reach Run state and is deleted.	To Configure an easy psk WLAN using a AAA server that is not reachable. Verify that the Client can't reach Run state and is deleted.	Passed	
EWLCJ1712S_Reg_357	Configure a WLAN with easy psk and webauth on map failure. Make sure that the webauth on map failure is not Applied in case the Client is connecting with a non supported passphrase.	To Configure a WLAN with easy psk and webauth on map failure. Make sure that the webauth on map failure is not Applied in case the Client is connecting with a non supported passphrase.	Passed	

Out-of-Band AP Image Download

Logical ID	Title	Description	Status	Defect ID
EWLCJ1712S_Reg_454	Verify if https AP image download is disabled by default on eWLC	To verify if the https AP download is disabled by default and check the same for all eWLC	Passed	
EWLCJ1712S_Reg_455	Enabling the https AP image download from CLI for 9800-80 eWLC	To enabling the https AP image download from CLI for 9800-80 eWLC	Passed	
EWLCJ1712S_Reg_456	Enabling the https AP image download from CLI for 9800-L eWLC	To enabling the https AP image download from CLI for 9800-L eWLC	Passed	
EWLCJ1712S_Reg_457	Enabling the https AP image download from CLI for 9800-CL eWLC	To enabling the https AP image download from CLI for 9800-CL eWLC	Passed	
EWLCJ1712S_Reg_458	Configure AP file transfer port for 9800-L controller	To configure AP file transfer port for 9800-L controller	Passed	
EWLCJ1712S_Reg_459	Configure AP file transfer port for 9800-CL controller	To configure AP file transfer port for 9800-CL controller	Passed	
EWLCJ1712S_Reg_460	Configure AP file transfer port for 9800-80 controller	To configure AP file transfer port for 9800-80 controller	Passed	
EWLCJ1712S_Reg_461	Check for AP file transfer port config changes in 9800-L controller	To Check for AP file transfer port config changes in 9800-L controller	Passed	
EWLCJ1712S_Reg_462	Check for AP file transfer port config changes in 9800-CL controller	To Check for AP file transfer port config changes in 9800-CL controller	Passed	
EWLCJ1712S_Reg_463	Check for AP file transfer port config changes in 9800-80 controller	To Check for AP file transfer port config changes in 9800-80 controller	Passed	

EWLCJ1712S_Reg_464	Verify 9105 AP is able to download image using https	To verify if 9105 AP is able to download image using https and check the AP details after the image download	Passed	
EWLCJ1712S_Reg_465	Verify 9115 AP is able to download image using https	To verify if 9115 AP is able to download image using https and check the AP details after the image download	Passed	
EWLCJ1712S_Reg_466	Verify 9120 AP is able to download image using https	To verify if 9120 AP is able to download image using https and check the AP details after the image download	Passed	
EWLCJ1712S_Reg_467	Verify 9130 AP is able to download image using https	To verify if 9130 AP is able to download image using https and check the AP details after the image download	Passed	
EWLCJ1712S_Reg_468	Verify 4800 AP is able to download image using https	To verify if 4800 AP is able to download image using https and check the AP details after the image download	Passed	
EWLCJ1712S_Reg_469	Verify AP is able to download image via capwap after disabling https or ftp	To verify AP is able to download image via capwap after disabling https or ftp	Passed	
EWLCJ1712S_Reg_470	Verify AP join image download over https and HA switchover is triggered	To verify the behaviour when HA switchover is triggered during AP join image download over https	Passed	

EWLCJ1712S_Reg_471	Verify flex mode AP is able to download image using https in AP join state	To verify flex mode AP is able to download image using https in AP join state	Passed	
EWLCJ1712S_Reg_472	Check if the Https image download Happens when window Clients connected	To Check if the Https image download Happens when window Clients connected	Passed	
EWLCJ1712S_Reg_473	Check if the Https image download Happens when Android Clients connected	To check if the Https image download Happens when Android Clients connected	Passed	
EWLCJ1712S_Reg_474	Check if the Https image download Happens when iPhone Clients connected	To check if the Https image download Happens when iPhone Clients connected	Passed	
EWLCJ1712S_Reg_475	Check if the Https image download Happens when MAC Clients connected	To check if the Https image download Happens when MAC Clients connected	Passed	
EWLCJ1712S_Reg_476	Check if the Https image download Happens when Surface Clients connected	To check if the Https image download Happens when Surface Clients connected	Passed	
EWLCJ1712S_Reg_477	To Verify Client behaviour during and after image download while it is connected to open security ssid	Verify Client behaviour during and after image download while it is connected to open security ssid	Passed	
EWLCJ1712S_Reg_478	To Verify Client behaviour during and after image download while it is connected to wpa2-psk security ssid	Verify Client behaviour during and after image download while it is connected to wpa2-psk security ssid	Passed	

EWLCJ1712S_Reg_479	To Verify Client behaviour during and after image download while it is connected to wpa2-802.1x security ssid	Verify Client behaviour during and after image download while it is connected to wpa2-802.1x security ssid	Passed	
EWLCJ1712S_Reg_480	To Verify Client behaviour during and after image download while it is connected to wpa3-sae security ssid	Verify Client behaviour during and after image download while it is connected to wpa3-sae security ssid	Passed	
EWLCJ1712S_Reg_481	To Verify Client behaviour during and after image download while it is connected to wpa3-802.1x security ssid	Verify Client behaviour during and after image download while it is connected to wpa3-802.1x security ssid	Passed	
EWLCJ1712S_Reg_482	Verify the CPP Custom Port Classification table show commands are working in 9800-L controller	To verify the CPP Custom Port Classification table show commands are working in 9800-L controller	Passed	
EWLCJ1712S_Reg_483	Verify the CPP Custom Port Classification table show commands are working in 9800-CL controller	To verify the CPP Custom Port Classification table show commands are working in 9800-CL controller	Passed	
EWLCJ1712S_Reg_484	Verify the CPP Custom Port Classification table show commands are working in 9800-80 controller	To verify the CPP Custom Port Classification table show commands are working in 9800-80 controller	Passed	

Enable AP fallback to primary, secondary or tertiary controllers under AP Join Profile

Logical ID	Title	Description	Status	Defect ID
EWLCJ1712S_Reg_287	Check Whether any priming profiles are present in the 9800-L controller	To check Whether any priming profiles are present in the 9800-L controller	Passed	
EWLCJ1712S_Reg_288	Check Whether any priming profiles are present in the 9800-CL controller	To check Whether any priming profiles are present in the 9800-CL controller	Passed	
EWLCJ1712S_Reg_289	Check Whether any priming profiles are present in the 9800-80 controller	To check Whether any priming profiles are present in the 9800-80 controller	Passed	
EWLCJ1712S_Reg_290	Check Whether any per AP priming profiles are present in the 9105 AP	To check Whether any per AP priming profiles are present in the 9105 AP	Passed	
EWLCJ1712S_Reg_291	Check Whether any per AP priming profiles are present in the 9115 AP	To check Whether any per AP priming profiles are present in the 9115 AP	Passed	
EWLCJ1712S_Reg_292	Check Whether any per AP priming profiles are present in the 9120 AP	To check Whether any per AP priming profiles are present in the 9120 AP	Passed	
EWLCJ1712S_Reg_293	Check Whether any per AP priming profiles are present in the 9130 AP	To check Whether any per AP priming profiles are present in the 9130 AP	Passed	
EWLCJ1712S_Reg_294	Configure AP priming profiles and AP priming filters on 9800-L Controller	To configure AP priming profiles and AP priming filters on 9800-L Controller	Passed	
EWLCJ1712S_Reg_295	Configure AP priming profiles and AP priming filters on 9800-80 Controller	To configure AP priming profiles and AP priming filters on 9800-80 Controller	Passed	

Enable AP fallback to primary, secondary or tertiary controllers under AP Join Profile

EWLCJ1712S_Reg_296	Configure AP priming profiles and AP priming filters on 9800-CL Controller	To configure AP priming profiles and AP priming filters on 9800-CL Controller	Passed	
EWLCJ1712S_Reg_297	Configure primary controller on priming profile and check whether it is configured	To configure primary controller on priming profile and check whether it is configured	Passed	
EWLCJ1712S_Reg_298	Configure secondary controller on priming profile and check whether it is configured	To configure secondary controller on priming profile and check whether it is configured	Passed	
EWLCJ1712S_Reg_299	Configure tertiary controller on priming profile and check whether it is configured	To configure tertiary controller on priming profile and check whether it is configured	Passed	
EWLCJ1712S_Reg_300	Check Per AP priming Configurations on 9105 AP from 9800-L/CL/80 controllers	To check Per AP priming Configurations on 9105 AP from 9800-L/CL/80 controllers	Passed	
EWLCJ1712S_Reg_301	Check Per AP priming Configurations on 9115 AP from 9800-L/CL/80 controllers	To check Per AP priming Configurations on 9115 AP from 9800-L/CL/80 controllers	Passed	
EWLCJ1712S_Reg_302	Check Per AP priming Configurations on 9120 AP from 9800-L/CL/80 controllers	To check Per AP priming Configurations on 9120 AP from 9800-L/CL/80 controllers	Passed	
EWLCJ1712S_Reg_303	Check Per AP priming Configurations on 9120 AP from 9800-L/CL/80 controllers	To check Per AP priming Configurations on 9120 AP from 9800-L/CL/80 controllers	Passed	
EWLCJ1712S_Reg_304	Check whether the AP priming profile of Controller is pushed to 9105 AP joining the controller 9800-L/CL/80	To check whether the AP priming profile of Controller is pushed to 9105 AP joining the controller 9800-L/CL/81	Passed	

EWLCJ1712S_Reg_305	Check whether the AP priming profile of Controller is pushed to 9115 AP joining the controller 9800-L/CL/81	To check whether the AP priming profile of Controller is pushed to 9115 AP joining the controller 9800-L/CL/82	Passed	
EWLCJ1712S_Reg_306	Check whether the AP priming profile of Controller is pushed to 9120 AP joining the controller 9800-L/CL/82	To check whether the AP priming profile of Controller is pushed to 9120 AP joining the controller 9800-L/CL/83	Passed	
EWLCJ1712S_Reg_307	Check whether the AP priming profile of Controller is pushed to 9130 AP joining the controller 9800-L/CL/83	To check whether the AP priming profile of Controller is pushed to 9130 AP joining the controller 9800-L/CL/84	Passed	

Enhancement in client steering during Rolling AP Upgrade

Logical ID	Title	Description	Status	Defect ID
EWLCJ1712S_Reg_485	Check Client steering command while rolling AP upgrade	Verify Client steering command is working or not for rolling AP upgrade	Passed	
EWLCJ1712S_Reg_486	Check Client de-authentication command while rolling AP upgrade	Verify Client deauthentication command is working or not for rolling AP upgrade	Passed	
EWLCJ1712S_Reg_487	Check 11v Clients getting Client death message with N+1 rolling AP upgrade with Security WPA2+PSK	Verify 11v Clients getting Client death message or not with N+1 rolling AP upgrade with Security WPA2+PSK	Passed	
EWLCJ1712S_Reg_488	Check 11v Clients not getting Client death message with N+1 rolling AP upgrade with Security WPA2+PSK	Verify 11v Clients are not getting Client death message with N+1 rolling AP upgrade with Security WPA2+PSK	Passed	
EWLCJ1712S_Reg_489	Check non 11v Clients not getting Client death message with N+1 rolling AP upgrade with Security WPA2+PSK	Verify non 11v Clients are not getting Client death message with N+1 rolling AP upgrade with Security WPA2+PSK	Passed	
EWLCJ1712S_Reg_490	Check 11v Clients getting Client death message with N+1 rolling AP upgrade with Security WPA3+PSK	Verify 11v Clients getting Client death message or not with N+1 rolling AP upgrade with Security WPA3+PSK	Passed	

EWLCJ1712S_Reg_491	Check 11v Clients not getting Client deauth message with N+1 rolling AP upgrade with Security WPA3+PSK	Verify 11v Clients are not getting Client deauth message with N+1 rolling AP upgrade with Security WPA3+PSK	Passed	
EWLCJ1712S_Reg_492	Check non 11v Clients not getting Client deauth message with N+1 rolling AP upgrade with Security WPA3+PSK	Verify non 11v Clients are not getting Client deauth message with N+1 rolling AP upgrade with Security WPA3+PSK	Passed	
EWLCJ1712S_Reg_493	Check 11v Clients getting Client deauth message with N+1 rolling AP upgrade with Security dot1X	Verify 11v Clients getting Client deauth message or not with N+1 rolling AP upgrade with Security dot1x	Passed	
EWLCJ1712S_Reg_494	Check 11v Clients not getting Client deauth message with N+1 rolling AP upgrade with Security dot1X	Verify 11v Clients are not getting Client deauth message with N+1 rolling AP upgrade with Security dot1x	Passed	
EWLCJ1712S_Reg_495	Check non 11v Clients not getting Client deauth message with N+1 rolling AP upgrade with Security dot1X	Verify non 11v Clients are not getting Client deauth message with N+1 rolling AP upgrade with Security dot1x	Passed	
EWLCJ1712S_Reg_496	Check 11v Clients getting Client deauth message with ISSU rolling AP upgrade	Verify 11v Clients getting Client deauth message or not with ISSU rolling AP upgrade with Security dot1x	Passed	
EWLCJ1712S_Reg_497	Check 11v Clients not getting Client deauth message with ISSU rolling AP upgrade	Verify 11v Clients are not getting Client deauth message with ISSU rolling AP upgrade with Security dot1x	Passed	

EWLCJ1712S_Reg_498	Check non 11v Clients not getting Client deauth message with ISSU rolling AP upgrade	Verify non 11v Clients are not getting Client deauth message with ISSU rolling AP upgrade with Security dot1x	Passed	
--------------------	--	---	--------	--

EWC support for WiFi6 APs

Logical ID	Title	Description	Status	Defect ID
EWLCJ1712S_Reg_715	Make 9120 AP as EWC with 17.11 image	To verify 9120 AP converted as EWC	Passed	
EWLCJ1712S_Reg_716	Make 9130 AP as EWC with 17.11 image	To verify 9130 AP converted as EWC	Passed	
EWLCJ1712S_Reg_717	Make 9105 AP as EWC with 17.11 image	To verify 9105 AP converted as EWC	Passed	
EWLCJ1712S_Reg_718	Make 9115 AP as EWC with 17.11 image	To verify 9115 AP converted as EWC	Passed	
EWLCJ1712S_Reg_719	Create WLAN and verify Client connectivity.	To verify Client associate with created WLAN	Passed	
EWLCJ1712S_Reg_720	Connecting a Window Client and verify details	To connect a window Client to the AP and check if the Client gets connected to the EWC without any errors.	Passed	
EWLCJ1712S_Reg_721	Connecting a Android Client and verify details	To connect a Android Client to the AP and check if the Client gets connected to the EWC without any errors.	Passed	
EWLCJ1712S_Reg_722	Connecting a IOS Client and verify details	To connect a IOS Client to the AP and check if the Client gets connected to the EWC without any errors.	Passed	
EWLCJ1712S_Reg_723	Connecting a MAC Client and verify details	To connect a MAC Client to the AP and check if the Client gets connected to the EWC without any errors.	Passed	

EWLCJ1712S_Reg_724	Checking if the Client do not connect to the AP after rebooting and joining the primary controller	To check if the Client gets connected to the AP after rebooting the AP and AP joining the primary controller .where there is no same WLAN	Passed	
EWLCJ1712S_Reg_725	Performing Intra controller roaming of Android Client	To check whether intra controller roaming of Android Clients works properly or not	Passed	
EWLCJ1712S_Reg_726	Performing Intra controller roaming of IOS Client	To check whether intra controller roaming of IOS Clients works properly or not in eWLC	Passed	
EWLCJ1712S_Reg_727	Performing Intra controller roaming of MAC OS Client	To check whether intra controller roaming of MACOS Clients works properly or not	Passed	
EWLCJ1712S_Reg_728	Performing Inter controller roaming of Windows OS Client	To check whether inter controller roaming of windows Clients works properly or not	Passed	
EWLCJ1712S_Reg_729	Performing Inter controller roaming of Android Client	To check whether inter controller roaming of Android Clients works properly or not	Passed	
EWLCJ1712S_Reg_730	Performing Inter controller roaming of IOS Client	To check whether inter controller roaming of IOS Clients works properly or not	Passed	
EWLCJ1712S_Reg_731	Performing Inter controller roaming of MAC OS Client	To check whether inter controller roaming of MAC OS Clients works properly or not	Passed	

Reload Reason History

Logical ID	Title	Description	Status	Defect ID
EWLCJ1712S_Reg_433	Configure HA setup using RP option.	To configure HA setup using RP option.	Passed	
EWLCJ1712S_Reg_434	Validate the HA setup parameters.	To validate the HA setup parameters.	Passed	
EWLCJ1712S_Reg_435	Check the Last Reload reason through CLI	To check the Last Reload reason through CLI	Passed	
EWLCJ1712S_Reg_436	Unpairing HA setup using no RP-Method	To unpair the HA setup using no RP-Method	Passed	
EWLCJ1712S_Reg_437	Configure HA SSO RMI	To Configure HA SSO RMI	Passed	
EWLCJ1712S_Reg_438	Validate the HA RMI parameters.	To validate the HA RMI parameters.	Passed	
EWLCJ1712S_Reg_439	Update RMI configuration in eWLC UI and check the output	To update RMI configuration in eWLC UI and check the output	Passed	
EWLCJ1712S_Reg_440	Enable gateway failover, verify output details and monitor devices for switchover.	To enable gateway failover, verify output details & monitor devices for switchover.	Passed	
EWLCJ1712S_Reg_441	Force-switchover to verify HA SSO RMI behaviour.	To verify HA SSO RMI behaviour on force-switchover.	Passed	
EWLCJ1712S_Reg_442	Enabling the RP method with RMI enabled already.	To enable the RP method with RMI option enabled already.	Passed	
EWLCJ1712S_Reg_443	ISSU upgrade with HA SSO RMI	To perform ISSU upgrade in HA SSO RMI setup and monitor behaviour	Passed	
EWLCJ1712S_Reg_444	Check ISSU downgrade with HA SSO RMI	To perform ISSU upgrade in HA SSO RMI setup and monitor behaviour	Passed	

EWLCJ1712S_Reg_445	Client retention during ISSU upgrade/downgrade	To verify Client retention after ISSU upgrade/downgrade.	Passed	
EWLCJ1712S_Reg_446	Force multiple switchover after upgrade to check if RMI link is up or not	To force multiple switchover after upgrade to check if RMI link is up or not	Passed	
EWLCJ1712S_Reg_447	Force multiple switchover and verify AP & Client association	To force multiple switchover and verify AP & Client association	Passed	
EWLCJ1712S_Reg_448	Validate licensing information after ISSU upgrade/downgrade	To validate licensing information after ISSU upgrade/downgrade	Passed	
EWLCJ1712S_Reg_449	Validate licensing information after multiple switchover and reload	To validate licensing information after multiple switchover and reload	Passed	
EWLCJ1712S_Reg_450	Clear RMI based configuration from UI	To clear RMI based configuration from UI	Passed	
EWLCJ1712S_Reg_451	Clear RMI based configuration from CLI	To clear RMI based configuration from CLI	Passed	
EWLCJ1712S_Reg_452	Configure HA SSO RMI after RP-clear & validate HA RMI parameters.	To configure HA SSO RMI after RP-clear & validate HA RMI parameters.	Passed	
EWLCJ1712S_Reg_453	Verify HA setup details from Standby console	To verify HA setup details in Standby console	Passed	

HA SSO RMI

Logical ID	Title	Description	Status	Defect ID
EWLCJ1712S_Reg_136	Configure HA setup using RP option.	To configure HA setup using RP option.	Passed	
EWLCJ1712S_Reg_137	Validate the HA setup parameters.	To validate the HA setup parameters.	Passed	
EWLCJ1712S_Reg_138	Unpairing HA setup using no RP-Method	To unpair the HA setup using no RP-Method	Passed	
EWLCJ1712S_Reg_139	Configure HA SSO RMI	To Configure HA SSO RMI	Passed	
EWLCJ1712S_Reg_140	Validate the HA RMI parameters.	To validate the HA RMI parameters.	Passed	
EWLCJ1712S_Reg_141	Update RMI configuration in eWLC UI and check the output	To update RMI configuration in eWLC UI and check the output	Passed	
EWLCJ1712S_Reg_142	Enable gateway failover, verify output details and monitor devices for switchover.	To enable gateway failover, verify output details & monitor devices for switchover.	Passed	
EWLCJ1712S_Reg_143	Force-switchover to verify HA SSO RMI behaviour.	To verify HA SSO RMI behaviour on force-switchover.	Passed	
EWLCJ1712S_Reg_144	Enabling the RP method with RMI enabled already.	To enable the RP method with RMI option enabled already.	Passed	
EWLCJ1712S_Reg_145	ISSU upgrade with HA SSO RMI	To perform ISSU upgrade in HA SSO RMI setup and monitor behaviour	Passed	
EWLCJ1712S_Reg_146	Check ISSU downgrade with HA SSO RMI	To perform ISSU upgrade in HA SSO RMI setup and monitor behaviour	Passed	
EWLCJ1712S_Reg_147	Client retention during ISSU upgrade/downgrade	To verify Client retention after ISSU upgrade/downgrade.	Passed	

EWLCJ1712S_Reg_148	Force multiple switchover after upgrade to check if RMI link is up or not	To force multiple switchover after upgrade to check if RMI link is up or not	Passed	
EWLCJ1712S_Reg_149	Force multiple switchover and verify AP & Client association	To force multiple switchover and verify AP & Client association	Passed	
EWLCJ1712S_Reg_150	Validate licensing information after ISSU upgrade/downgrade	To validate licensing information after ISSU upgrade/downgrade	Passed	
EWLCJ1712S_Reg_151	Validate licensing information after multiple switchover and reload	To validate licensing information after multiple switchover and reload	Passed	
EWLCJ1712S_Reg_152	Clear RMI based configuration from UI	To clear RMI based configuration from UI	Passed	
EWLCJ1712S_Reg_153	Clear RMI based configuration from CLI	To clear RMI based configuration from CLI	Passed	
EWLCJ1712S_Reg_154	Configure HA SSO RMI after RP-clear & validate HA RMI parameters.	To configure HA SSO RMI after RP-clear & validate HA RMI parameters.	Passed	
EWLCJ1712S_Reg_155	Verify HA setup details from Standby console	To verify HA setup details in Standby console	Passed	
EWLCJ1712S_Reg_156	Check interfaces state from standby console	To check interfaces state from standby console	Passed	
EWLCJ1712S_Reg_157	Check environment details from standby console	To monitor environment details from standby console	Passed	
EWLCJ1712S_Reg_158	Check process usage details in standby console	To check process usage details in standby console	Passed	

EWLCJ1712S_Reg_159	Monitor running process in Standby unit from Active unit console	To monitor running process in Standby unit from Active unit console	Passed	
EWLCJ1712S_Reg_160	SSH to standby console directly and check connectivity	To SSH to standby console directly and check connectivity	Passed	

Intelligent AP auditing on WLC

Logical ID	Title	Description	Status	Defect ID
EWLCJ1712S_Reg_370	Configure Radio monitoring	Verify the radio monitoring parameter configured or not	Passed	
EWLCJ1712S_Reg_371	Configure AP monitoring	Verify the AP monitoring parameter configured or not	Passed	
EWLCJ1712S_Reg_372	Configure high CPU utilization	To Verify reload Happen or not for high CPU utilization	Passed	
EWLCJ1712S_Reg_373	Configure high memory utilization	To Verify reload Happen or not for high memory utilization	Passed	
EWLCJ1712S_Reg_374	Validate the AP disconnect reason code for high memory	Check the AP disconnect reason code if AP is showing high memory.	Passed	
EWLCJ1712S_Reg_375	Validate the AP disconnect reason code for high CPU.	Check the AP disconnect reason code if AP is showing high CPU.	Passed	
EWLCJ1712S_Reg_376	show commands stats for AP action	Verify if AP show stats commands of AP high CPU/memory and radio stuck are incrementing on each action	Passed	
EWLCJ1712S_Reg_377	Configure different sampling periods.	Configure different sampling periods for AP CPU and high memory and verify if computation works fine.	Passed	

EWLCJ1712S_Reg_378	Configure different threshold time	Configure different threshold values for AP CPU and high memory and verify if computation works fine.	Passed	
EWLCJ1712S_Reg_379	NETCONF config data	Configure all AP system and radio monitoring via NETCONF	Passed	
EWLCJ1712S_Reg_380	NETCONF notification	Verify that NETCONF notification is getting generated for AP high CPU, high memory disconnect reason and radio reset due to radio stuck.	Passed	
EWLCJ1712S_Reg_381	Pre-download/upgrade case	No AP reload action should be taken when AP is doing pre-download or upgrade of the image	Passed	
EWLCJ1712S_Reg_382	Validate AP action for max value configure in sampling period	Configure Max Sampling values for AP CPU and high memory and verify if computation works fine	Passed	
EWLCJ1712S_Reg_383	Validate AP action for max value configure in threshold time	Configure Max threshold time for AP CPU and high memory and verify if computation works fine	Passed	
EWLCJ1712S_Reg_384	Validate the CPU and memory details in DNAC	Verify the radio , AP monitoring parameter details showing or not in DANC	Passed	
EWLCJ1712S_Reg_385	Verify the Client association during AP reload	Verify Client connected or not after AP reload	Passed	

EWLCJ1712S_Reg_386	Configure high CPU & memory for continuous AP reload action	Verify any crash Happens or not during continuous reload AP action	Passed	
--------------------	---	--	--------	--

Intelligent Capture OTA Sniffer Device Work

Logical ID	Title	Description	Status	Defect ID
EWLCJ1712S_Reg_525	Configure Sniffer for 5GHz or 2.4GHz band radios	To configure Sniffer for 5GHz or 2.4GHz band radios	Passed	
EWLCJ1712S_Reg_526	Configure Sniffer for 5GHz or 2.4GHz radios through CLI	To configure Sniffer for 5GHz or 2.4GHz radios through CLI	Passed	
EWLCJ1712S_Reg_527	Change mode from local to flex and capture network activity	To capture network activity when AP mode changed from local to flex	Passed	
EWLCJ1712S_Reg_528	Change mode from flex to local and capture network activity	To capture network activity when AP mode changed from flex to local	Passed	
EWLCJ1712S_Reg_529	Check whether alert is triggered or not when AP mode changed to Sniffer	To check whether alert is triggered or not when AP mode changed to Sniffer	Passed	
EWLCJ1712S_Reg_530	Check commands whether packets are captured in AP side or not	To check commands whether packets are captured in AP side or not	Passed	
EWLCJ1712S_Reg_531	Verify CLIs existing functionality to start sniff	To verify CLIs existing functionality to start sniff	Passed	
EWLCJ1712S_Reg_532	Enable/Disable sniffer subscription When AP radio role is not sniffer	To verify sniffer subscription enable/disable on AP when AP radio role is not in sniffer mode (2.4,5 and 6 GHz)	Passed	
EWLCJ1712S_Reg_533	Enable/Disable sniffer subscription When AP Mode is sniffer	To verify sniffer subscription enable/disable on AP when AP radio role is in sniffer mode (2.4,5 and 6 GHz)	Passed	

EWLCJ1712S_Reg_534	Verify sniffer subscription when AP associate and dis-associate a controller (AP association/disassociation)	To verify sniffer subscription when a AP associate and dis-associate a controller	Passed	
EWLCJ1712S_Reg_535	Verify radio role "sniffer" for 2.4GHz	To verify AP 2.4GHz radio role as sniffer	Passed	
EWLCJ1712S_Reg_536	Verify radio role "sniffer" for 5GHz	To verify AP 5GHz radio role as sniffer	Passed	
EWLCJ1712S_Reg_537	Verify radio role "sniffer" for 6GHz	To verify AP 6GHz radio role as sniffer	Passed	
EWLCJ1712S_Reg_538	Verify AP mode sniffer with 2.4GHz	Change AP mode to sniffer and verify ratio tap fields for 2.4GHz	Passed	
EWLCJ1712S_Reg_539	Verify AP mode sniffer with 5GHz	Change AP mode to sniffer and verify ratio tap fields for 5GHz	Passed	
EWLCJ1712S_Reg_540	Verify AP mode sniffer with 6GHz	Change AP mode to sniffer and verify ratio tap fields for 6GHz	Passed	
EWLCJ1712S_Reg_541	verify sniffer subscription with truncation for AP radio role in 2.4GHz	To verify sniffer subscription with truncation for AP radio role in 2.4GHz	Passed	
EWLCJ1712S_Reg_542	verify sniffer subscription with truncation for AP radio role in 5GHz	To verify sniffer subscription with truncation for AP radio role in 5GHz	Passed	
EWLCJ1712S_Reg_543	verify sniffer subscription with truncation for AP radio role in 6GHz	To verify sniffer subscription with truncation for AP radio role in 6GHz	Passed	
EWLCJ1712S_Reg_544	Verify sniffer subscription with truncation for AP sniffer mode for 2.4GHz	To verify sniffer subscription with truncation for AP sniffer mode for 2.4GHz	Passed	

EWLCJ1712S_Reg_545	Verify sniffer subscription with truncation for AP sniffer mode for 5GHz	To verify sniffer subscription with truncation for AP sniffer mode for 5GHz	Passed	
EWLCJ1712S_Reg_546	Verify sniffer subscription with truncation for AP sniffer mode for 6GHz	To verify sniffer subscription with truncation for AP sniffer mode for 6GHz	Passed	
EWLCJ1712S_Reg_547	Verify sniffer AP Model 9130	To verify sniffer AP Model 9130	Passed	
EWLCJ1712S_Reg_548	Verify sniffer AP Model 9120	To verify sniffer AP Model 9120	Passed	
EWLCJ1712S_Reg_549	Verify iCAP sniffer truncation with minimum bytes configured	To verify iCAP sniffer truncation with minimum bytes configured	Passed	
EWLCJ1712S_Reg_550	Verify iCAP sniffer truncation with maximum bytes configured	To verify iCAP sniffer truncation with maximum bytes configured	Passed	
EWLCJ1712S_Reg_551	Verify iCAP sniffer truncation with all bytes configured	To verify iCAP sniffer truncation with all bytes configured	Passed	
EWLCJ1712S_Reg_552	Verify sniffer subscription config after AP reload/reboot	To verify sniffer subscription config after AP reload/reboot	Passed	
EWLCJ1712S_Reg_553	Verify CPU and memory usage	To validate CPU/memory usage	Passed	
EWLCJ1712S_Reg_554	Verify any memory leakage on AP	To verify any memory leakage on AP	Passed	

Convert Redundant 2.4-GHz Radios to Monitor Mode

Logical ID	Title	Description	Status	Defect ID
EWLCJ1712S_Reg_415	Check the config CLI syntax “FRA action monitor”	To verify whether syntax should be proper or not and without any issues	Passed	
EWLCJ1712S_Reg_416	Check the config CLI syntax “no FRA action monitor”	To verify whether syntax should be proper or not and without any issues	Passed	
EWLCJ1712S_Reg_417	Check the config CLI syntax “FRA action monitor” show command	To check the “show AP FRA” displays about the FRA action or not	Passed	
EWLCJ1712S_Reg_418	Execute the CLI functionality “no FRA action monitor”	To check the “show AP FRA” show display about the FRA action as default or not	Passed	
EWLCJ1712S_Reg_419	Configure 5/6GHz FRA details through UI dashboard	To verify 5/6GHz FRA details configured through UI dashboard	Passed	
EWLCJ1712S_Reg_420	Configure 2.4/5GHz FRA details through UI dashboard	To verify 2.4/5GHz FRA details configured through UI dashboard	Passed	
EWLCJ1712S_Reg_421	Configure FRA action in named RF profile	To configure FRA action in named RF profile	Passed	
EWLCJ1712S_Reg_422	Configure the FRA action and check the config sync on Standby	To check whether FRA action details sync up with standby config or not	Passed	
EWLCJ1712S_Reg_423	Configure FRA action and reboot the controller and check the config	To check whether configuration retained or not after the reboot	Passed	
EWLCJ1712S_Reg_424	Check the show running config after configuring the FRA action	To check the show running config after configuring the FRA action	Failed	CSCwf96250

EWLCJ1712S_Reg_425	Check show tech support after configuring the FRA action	Show tech support should Have the FRA action config in RF profile configuration	Passed	
EWLCJ1712S_Reg_426	The FRA config option shouldn't be there in 5GHz and 6GHz RF profile configuration	To check the FRA config option shouldn't be there in 5GHz and 6GHz RF profile configuration	Passed	
EWLCJ1712S_Reg_427	Enable the FRA action monitor and Have more than 4 dual band AP's in the controller and check the dual band radios moved to monitor role	To check the dual band XOR radios move to only monitor role when FRA action is enabled as monitor	Passed	
EWLCJ1712S_Reg_428	Disable the FRA action as monitor and check the XOR dual band radios move from Monitor back to 2.4GHz Client serving mode	Dual band radios which are moved to monitor due to COF needs to be changed to Client serving 2.4GHz after disabling the FRA action	Passed	
EWLCJ1712S_Reg_429	Enable the FRA action as monitor and enable FRA freeze and we shouldn't move any dual band radios to Monitor	It shouldn't move dual band radios when FRA freeze is enabled	Passed	
EWLCJ1712S_Reg_430	Disable the FRA freeze and check the Dual band radios should move to monitor after couple of FRA cycles	After disabling the FRA freeze after of couple of FRA cycles dual band radios should move to Monitor	Passed	
EWLCJ1712S_Reg_431	Disable the global FRA and check radios which are moved to Monitor due to FRA needs to be moved back to 2.4GHz Client serving	Disable the global FRA and check radios should move back 2.4GHz Client serving	Passed	

EWLCJ1712S_Reg_432	Verify Configuration and runtime information	To verify Configuration and runtime information	Passed	
--------------------	--	---	--------	--

IP Theft on 9800 WLC [Central Mode of operation]

Logical ID	Title	Description	Status	Defect ID
EWLCJ1712S_Reg_589	MAC binding with 2 same SSID's for different VLAN with same IP for Local mode 9105 AP and 9166 AP	To Check MAC binding with eWLC Having 2 same SSIDs for different VLAN with same IP for local mode 9105 AP and 9166 AP and check if Happens Excluded list for 2nd SSID	Passed	
EWLCJ1712S_Reg_590	MAC binding Having 2 same SSID's for different VLAN with same IP for Local mode 9120 AP and 9130 AP	To Check MAC binding with eWLC Having 2 same SSIDs for different VLAN with same IP for local mode 9120 AP and 9130 AP and check if Happens Excluded list for 2nd SSID	Passed	
EWLCJ1712S_Reg_591	MAC binding Having 2 same SSID's for different VLAN with same IP for Local mode 9124 AP and 9164 AP	To Check MAC binding with eWLC Having 2 same SSIDs for different VLAN with same IP for local mode 9124 AP and 9164 AP and check if Happens Excluded list for 2nd SSID	Passed	
EWLCJ1712S_Reg_592	MAC binding with 2 same SSID's for different VLAN with same IP for flex mode 9105 AP and 9166 AP	To Check MAC binding with eWLC Having 2 same SSIDs for different VLAN with same IP for flex mode 9105 AP and 9166 AP and check if Happens Excluded list for 2nd SSID	Passed	

EWLCJ1712S_Reg_593	MAC binding Having 2 same SSID's for different VLAN with same IP for flex mode 9120 AP and 9130 AP	To Check MAC binding with eWLC Having 2 same SSIDs for different VLAN with same IP for flex mode 9120 AP and 9130 AP and check if Happens Excluded list for 2nd SSID	Passed	
EWLCJ1712S_Reg_594	MAC binding Having 2 same SSID's for different VLAN with same IP for flex mode 9124 AP and 9164 AP	To Check MAC binding with eWLC Having 2 same SSIDs for different VLAN with same IP for flex mode 9124 AP and 9164 AP and check if Happens Excluded list for 2nd SSID	Passed	
EWLCJ1712S_Reg_595	MAC binding with 2 different SSID's for different VLAN with same IP for flex mode 9105 AP and 9166 AP	To Check MAC binding with eWLC Having 2 different SSIDs for different VLAN with same IP for flex mode 9105 AP and 9166 AP and check if Happens Excluded list for 2nd SSID	Passed	
EWLCJ1712S_Reg_596	MAC binding with 2 different SSID's for different VLAN with same IP for flex mode 9120 AP and 9130 AP	To Check MAC binding with eWLC Having 2 different SSIDs for different VLAN with same IP for flex mode 9120 AP and 9130 AP and check if Happens Excluded list for 2nd SSID	Passed	

EWLCJ1712S_Reg_597	MAC binding with 2 different SSID's for different VLAN with same IP for flex mode 9124 AP and 9164 AP	To Check MAC binding with eWLC Having 2 different SSIDs for different VLAN with same IP for flex mode 9124 AP and 9164 AP and check if Happens Excluded list for 2nd SSID	Passed	
EWLCJ1712S_Reg_598	MAC binding with 2 different SSID's for different VLAN with same IP for Local mode 9105 AP and 9166 AP	To Check MAC binding with eWLC Having 2 different SSIDs for different VLAN with same IP for local mode 9105 AP and 9166 AP and check if Happens Excluded list for 2nd SSID	Passed	
EWLCJ1712S_Reg_599	MAC binding with 2 different SSID's for different VLAN with same IP for Local mode 9120 AP and 9130 AP	To Check MAC binding with eWLC Having 2 different SSIDs for different VLAN with same IP for local mode 9120 AP and 9130 AP and check if Happens Excluded list for 2nd SSID	Passed	
EWLCJ1712S_Reg_600	MAC binding with 2 different SSID's for different VLAN with same IP for Local mode 9124 AP and 9164 AP	To Check MAC binding with eWLC Having 2 different SSIDs for different VLAN with same IP for local mode 9124 AP and 9164 AP and check if Happens Excluded list for 2nd SSID	Passed	
EWLCJ1712S_Reg_601	Exclusion list-802.1x security for eWLC with 2 different SSID's for different VLAN with same IP and Perform MAC binding	To Check MAC binding with eWLC with 802.1x Having 2 different SSIDs for different VLAN with same IP and check if Happens Excluded list for 2nd SSID	Passed	

EWLCJ1712S_Reg_602	Exclusion list- PSK security for eWLC with 2 different SSID's for different VLAN with same IP and Perform MAC binding	To Check MAC binding with eWLC with PSK Security Having 2 different SSIDs for different VLAN with same IP and check if Happens Excluded list for 2nd SSID	Passed	
EWLCJ1712S_Reg_603	Exclusion list- 802.1x security for eWLC with 2 same SSID's for different VLAN with same IP and Perform MAC binding	To Check MAC binding with eWLC with 802.1x Having 2 same SSIDs for different VLAN with same IP and check if Happens Excluded list for 2nd SSID	Passed	
EWLCJ1712S_Reg_604	Exclusion list- PSK security for eWLC with 2 same SSID's for different VLAN with same IP and Perform MAC binding	To Check MAC binding with eWLC with PSK Security Having 2 same SSIDs for different VLAN with same IP and check if Happens Excluded list for 2nd SSID	Passed	
EWLCJ1712S_Reg_605	Perform MAC binding through CLI for different vlan with same IP address	To check if MAC binding is enabled through CLI	Passed	
EWLCJ1712S_Reg_606	MAC binding Having 2 same SSID's for same VLAN with same IP for Local mode	To Check MAC binding with eWLC Having 2 same SSIDs for same VLAN with same IP for local mode and check if Happens Excluded list for 2nd SSID	Passed	

EWLCJ1712S_Reg_607	MAC binding Having 2 same SSID's for same VLAN with same IP for flex mode	To Check MAC binding with eWLC Having 2 same SSIDs for same VLAN with same IP for flex mode and check if Happens Excluded list for 2nd SSID	Passed	
--------------------	---	---	--------	--

N+1 Hitless Upgrade - Site based Upgrade

Logical ID	Title	Description	Status	Defect ID
EWLCJ1712S_Reg_323	Create mobility group between WLCs (9800-40)	WLC 1 will be in v1, WLC 2 will be in v2 and All AP's are joined to WLC 1 (all WLC will be in same mobility group and in install mode)	Passed	
EWLCJ1712S_Reg_324	Create mobility group between WLCs (9800-80)	WLC 1 will be in v1, WLC 2 will be in v2 and All AP's are joined to WLC 1 (all WLC will be in same mobility group and in install mode)	Passed	
EWLCJ1712S_Reg_325	Create mobility group between WLCs (9800-CL)	WLC 1 will be in v1, WLC 2 will be in v2 and All AP's are joined to WLC 1 (all WLC will be in same mobility group and in install mode)	Passed	
EWLCJ1712S_Reg_326	Create mobility group between WLCs (9800 HA setup)	WLC 1 will be in v1, WLC 2 will be in v2 and All AP's are joined to WLC 1 (all WLC will be in same mobility group and in install mode)	Passed	
EWLCJ1712S_Reg_327	Verify All AP's are predownload the version2 image and after reloading automatically join to WLC 2	Download version 2 image to WLC 1, execute AP preimage download manually, Once all AP's are predownloaded the image, execute command AP image upgrade destination <WLC 2 Name> <WLC 2 IP>	Passed	

EWLCJ1712S_Reg_328	Verify N+1 Rolling Image Upgrade using WebUI	To verify N+1 Rolling Image Upgrade using WebUI	Passed	
EWLCJ1712S_Reg_329	Verify N+1 Rolling Image Upgrade using CLI	To verify N+1 Rolling Image Upgrade using CLI	Passed	
EWLCJ1712S_Reg_330	Repeat the test case 2 then once all AP joined to WLC 2, then reload the WLC 1 with version 2 image and once WLC 1 is up move all AP's to wlc1 using command AP image move destination <WLC 1 Name> <WLC 1IP> [<Upgrade report Name>]	To repeat the test case 2 then once all AP joined to WLC 2, then reload the WLC 1 with version 2 image and once WLC 1 is up move all AP's to wlc1 using command AP image move destination <WLC 1 Name> <WLC 1IP> [<Upgrade report Name>]	Passed	
EWLCJ1712S_Reg_331	Connect Windows Client after test case 2	To connect Windows Client after test case 2	Passed	
EWLCJ1712S_Reg_332	Connect Android Client after test case 2	To connect Android Client after test case 2	Passed	
EWLCJ1712S_Reg_333	Connect MAC Client after test case 2	To connect MAC Client after test case 2	Passed	
EWLCJ1712S_Reg_334	Connect IOS Client after test case 2	To connect IOS Client after test case 2	Passed	
EWLCJ1712S_Reg_335	Check whether able to select custom site filter and download	To check able to select custom site filter	Passed	
EWLCJ1712S_Reg_336	Check whether able to give AP Upgrade per Iteration	To check whether able to give AP Upgrade per Iteration	Passed	
EWLCJ1712S_Reg_337	Check whether able to Change Accounting Percentage in AP Upgrade Configuration	To check whether able to Change Accounting Percentage in AP Upgrade Configuration	Passed	

EWLCJ1712S_Reg_338	Check whether able to select Accounting Action in AP Upgrade Configuration	To check whether able to select Accounting Action in AP Upgrade Configuration	Passed	
EWLCJ1712S_Reg_339	Check whether able to select Iteration expiry in AP Upgrade Configuration	To check whether able to select Iteration expiry in AP Upgrade Configuration	Passed	

Network Service Analytics : DNS/DHCP/AAA server reachability via IPSLA and Failure reasons for AAA/DHCP

Logical ID	Title	Description	Status	Defect ID
EWLCJ1712S_Reg_277	Configuration of Basic ICMP Echo Operation using IPSLA	To Configure a Basic ICMP Echo Operation on the Source Device	Passed	
EWLCJ1712S_Reg_278	Configuration of Basic DNS Operation using IPSLA	To Configure a Basic DNS Operation on the Source Device	Passed	
EWLCJ1712S_Reg_279	Configuration of Basic DHCP Operation using IPSLA	To Configure a Basic DHCP Operation on the Source Device	Passed	
EWLCJ1712S_Reg_280	IPSLA Configuration of DNS server and check the reachability through CLI	To configure IPSLA Configuration of DNS server and check the reachability through CLI	Passed	
EWLCJ1712S_Reg_281	IPSLA Configuration of ICMP echo server and check the reachability through CLI	To configure IPSLA Configuration of ICMP Echo server and check the reachability through CLI	Passed	
EWLCJ1712S_Reg_282	IPSLA Configuration of DHCP server and check the reachability through CLI	To configure IPSLA Configuration of DHCP server and check the reachability through CLI	Passed	
EWLCJ1712S_Reg_283	Check the Client events DHCP data contains DHCP Lease time parameter	To check the Client events DHCP data contains DHCP Lease time parameter	Passed	

EWLCJ1712S_Reg_284	Check the Client events DHCP data contains DHCP MAC address received form DHCP packets	To check the Client events DHCP data contains DHCP MAC address received form DHCP packets	Passed	
EWLCJ1712S_Reg_285	Check DHCP pool exhaustion and config IPSLA for the DHCP server with dhcp probes	To check DHCP pool exhaustion and config IPSLA for the DHCP server with dhcp probes	Failed	CSCwf56797
EWLCJ1712S_Reg_286	Check the Client sends wrongful MAC and check if DHCP stats include the wrongful MAC in the stats	To check the Client sends wrongful MAC and check if DHCP stats include the wrongful MAC in the stats	Passed	

New Device Support for 9164/9166 AP

Logical ID	Title	Description	Status	Defect ID
EWLCJ1712S_Reg_17	Association of 9164/9166 AP with different eWLC model	To associate 9164/9166 AP to eWLC with latest image and check if the AP gets associated or not	Passed	
EWLCJ1712S_Reg_18	Associating 9164/9166 AP with different country code as with eWLC	To associate 9164/9166 AP with different country code and check if the AP does not get joined to eWLC	Passed	
EWLCJ1712S_Reg_19	Configuring AP with duplicate IP	To configure AP with a duplicate IP address and check if the AP shows error message and AP does not join the eWLC	Passed	
EWLCJ1712S_Reg_20	Rebooting the 9164/9166 AP	To check if the AP gets Rebooted or not and check if the AP joins the controller again.	Passed	
EWLCJ1712S_Reg_21	Rebooting the AP with primary controller given in High Availability	To reboot the AP by giving the primary controller IP using high availability and check if the AP joins the primary controller	Passed	CSCwf23543
EWLCJ1712S_Reg_22	Checking the details of the AP through the CLI	To check the details of the AP using CLI and check if the details are correctly shown or not	Passed	
EWLCJ1712S_Reg_23	Connecting a Window Client to the 9164/9166 AP	To connect a window Client to the AP and check if the Client gets connected to the AP without any errors.	Passed	

EWLCJ1712S_Reg_24	Connecting a Android Client to the 9164/9166 AP	To connect a Android Client to the AP and check if the Client gets connected to the AP without any errors.	Passed	
EWLCJ1712S_Reg_25	Connecting a IOS Client to the 9164/9166 AP	To connect a IOS Client to the AP and check if the Client gets connected to the AP without any errors.	Passed	
EWLCJ1712S_Reg_26	Connecting a MAC Client to the 9164/9166 AP	To connect a MAC Client to the AP and check if the Client gets connected to the AP without any errors.	Passed	
EWLCJ1712S_Reg_27	AP failover priority with critical	To check AP failover priority with critical and check if the AP gets connected to the next controller .	Passed	
EWLCJ1712S_Reg_28	AP failover priority with High priority	To check AP failover priority with critical and check if the AP gets connected to the next controller .	Passed	
EWLCJ1712S_Reg_29	Moving AP from 9800-40 eWLC to 9800-80 through High availability	To check if the AP moves from 9800-40 eWLC to 9800-80 eWLC through high availability.	Passed	
EWLCJ1712S_Reg_30	Reassociation of Client to the AP after reboot	To verify if the Client gets reassociated to the to the AP .	Passed	

EWLCJ1712S_Reg_31	Checking if the Client do not connect to the AP after rebooting and joining the primary controller	To check if the Client gets connected to the AP after rebooting the AP and AP joining the primary controller .where there is no same WLAN	Passed	
EWLCJ1712S_Reg_32	Performing Intra controller roaming of Android Client	To check whether intra controller roaming of Android Clients works properly or not	Passed	
EWLCJ1712S_Reg_33	Performing Intra controller roaming of IOS Client	To check whether intra controller roaming of IOS Clients works properly or not in eWLC	Passed	
EWLCJ1712S_Reg_34	Performing Intra controller roaming of MAC OS Client	To check whether intra controller roaming of MACOS Clients works properly or not	Passed	
EWLCJ1712S_Reg_35	Performing Inter controller roaming of Windows OS Client	To check whether inter controller roaming of windows Clients works properly or not	Passed	
EWLCJ1712S_Reg_36	Performing Inter controller roaming of Android Client	To check whether inter controller roaming of Android Clients works properly or not	Passed	
EWLCJ1712S_Reg_37	Performing Inter controller roaming of IOS Client	To check whether inter controller roaming of IOS Clients works properly or not	Passed	
EWLCJ1712S_Reg_38	Performing Inter controller roaming of MAC OS Client	To check whether inter controller roaming of MAC OS Clients works properly or not	Passed	

EWLCJ1712S_Reg_39	Change AP mode from local to Flex connect in 9164/9166 AP.	To change the mode of AP from local mode to Flexconnect mode and check if the AP does not reboot.	Passed	
EWLCJ1712S_Reg_40	Changing the AP from Flexconnect to Local mode and check if the AP reboot	To check if the AP reboots when AP mode is changed from flexconnect to Local mode .	Passed	
EWLCJ1712S_Reg_41	Adding two 9164/9166 AP in the AP group and connecting a Client to the AP with specific WLAN	To add two 9164/9166 AP in AP group and map a WLAN to group and connect a Client to the WLAN and check the Client connectivity	Passed	
EWLCJ1712S_Reg_42	Configuring different Syslog facility for 9115 11ax AP in eWLC and checking the same in the APs	To configure different syslog facility for 9115 AP in eWLC AP join profile and validating the same in the AP	Passed	
EWLCJ1712S_Reg_43	Packet capture of Client when the Client is connected to 9115/9120 AP with 2.4 GHz	To capture the Packet of the Client when the Client is connected to AP with radio as 2.4GHz	Passed	
EWLCJ1712S_Reg_44	Verify details by connecting Client to 2.4GHz radio of 9164/9166 AP.	To verify OFDMA details by connecting Client to 2.4 GHz radio.	Passed	
EWLCJ1712S_Reg_45	Verify details by connecting Client to 5 GHz radio of 9164/9166 AP	To verify OFDMA details by connecting Client to 5 GHz radio.	Passed	
EWLCJ1712S_Reg_46	Verify 9164/9166AP MU-MIMO details with Client connecting to WPA2 configured WLAN	To verify 11ax MU-MIMO details of 9164/9166 AP with Client connecting to WPA2 configured WLAN	Passed	

EWLCJ1712S_Reg_47	Verify 9164/9166AP MU-MIMO details with Client connecting to WPA 3 configured WLAN	To verify 11ax MU-MIMO details of 9164/9166 AP with Client connecting to WPA 3 configured WLAN	Passed	
-------------------	--	--	--------	--

OEAP URL based ACLs for split tunnel

Logical ID	Title	Description	Status	Defect ID
EWLCJ1712S_Reg_240	Configure an Access Control List for Split Tunnelling	To configure an Access Control List for Split Tunnelling	Passed	
EWLCJ1712S_Reg_241	Link ACL Policy to the Defined ACL	To link ACL Policy to the Defined ACL	Passed	
EWLCJ1712S_Reg_242	Configure a Wireless Profile Policy and a Split MAC ACL Name	To configure a Wireless Profile Policy and a Split MAC ACL Name	Passed	
EWLCJ1712S_Reg_243	Configure Office Extend AP through GUI	To configure Office Extend AP through GUI	Passed	
EWLCJ1712S_Reg_244	Configure Office Extend AP through CLI	To configure Office Extend AP through CLI	Passed	
EWLCJ1712S_Reg_245	Verify whether your able to access the Access Point Office Extend through GUI or not	To verify whether your able to access the Access Point Office Extend through GUI or not	Passed	
EWLCJ1712S_Reg_246	Connect Windows Client for Office Extend AP	To connect Windows Client for Office Extend AP	Passed	
EWLCJ1712S_Reg_247	Connect Android Client for Office Extend AP	To connect Android Client for Office Extend AP	Passed	
EWLCJ1712S_Reg_248	Connect Go Plus Client for Office Extend AP	To connect Go Plus Client for Office Extend AP	Passed	
EWLCJ1712S_Reg_249	Connect MAC Client for Office Extend AP	To connect MAC Client for Office Extend AP	Passed	
EWLCJ1712S_Reg_250	Connect IOS Client for Office Extend AP	To connect IOS Client for Office Extend AP	Passed	
EWLCJ1712S_Reg_251	Verify Locally switched traffic using Packet Capture	To verify Locally switched traffic using Packet Capture	Passed	

EWLCJ1712S_Reg_252	Connect any Client through centralized SSID	To connect any Client through centralized SSID	Passed	
EWLCJ1712S_Reg_253	Verify Office Extend AP details	To verify Office Extend AP details	Passed	
EWLCJ1712S_Reg_254	Verify whether your able to access Office Extend Access Point through a browser or not for 9105 AP	To verify whether your able to access Office Extend Access Point through a browser or not for 9105 AP	Passed	
EWLCJ1712S_Reg_255	Verify whether your able to access Office Extend Access Point through a browser or not for 9120 AP	To verify whether your able to access Office Extend Access Point through a browser or not for 9120 AP	Passed	
EWLCJ1712S_Reg_256	Verify whether your able to access Office Extend Access Point through a browser or not for 9130 AP	To verify whether your able to access Office Extend Access Point through a browser or not for 9130 AP	Passed	
EWLCJ1712S_Reg_257	Verify whether your able to access Office Extend Access Point through a browser or not for 4800 AP	To verify whether your able to access Office Extend Access Point through a browser or not for 4800 AP	Passed	
EWLCJ1712S_Reg_258	Verify MAC Filtering for Office Extend Access Point	To verify MAC Filtering for Office Extend Access Point	Passed	

Open RRM

Logical ID	Title	Description	Status	Defect ID
EWLCJ1712S_Reg_259	Configure Open rrm and enable connectivity to kairos cloud	To configure Open rrm and enable connectivity to kairos cloud	Passed	
EWLCJ1712S_Reg_260	Configure Open rrm and test for 5GHz band	To configure Open rrm and for 5GHz band	Passed	
EWLCJ1712S_Reg_261	Configure Open rrm and test for 2.4GHz band	To configure Open rrm and test for 2.4GHz band	Passed	
EWLCJ1712S_Reg_262	Configure Open rrm with WPA3 security	To configure Open rrm with WPA3 security	Passed	
EWLCJ1712S_Reg_263	Configure Open rrm with WPA2 security	To configure Open rrm with WPA2 security	Passed	
EWLCJ1712S_Reg_264	Configure Open rrm and test with android Client	To configure Open rrm and test with android Client	Passed	
EWLCJ1712S_Reg_265	Configure Open rrm and test with iPhone Client	To configure Open rrm and test with iPhone Client	Passed	
EWLCJ1712S_Reg_266	Configure Open rrm and test with MAC Client	To configure Open rrm and test with MAC Client	Passed	
EWLCJ1712S_Reg_267	Configure Open rrm and test with Surface Client	To configure Open rrm and test with Surface Client	Passed	
EWLCJ1712S_Reg_268	Configure Open rrm and test with Windows Client	To configure Open rrm and test with Windows Client	Passed	
EWLCJ1712S_Reg_269	Configure Open rrm and test with only FRA enabled	To configure Open rrm and test with only FRA enabled	Passed	
EWLCJ1712S_Reg_270	Configure Open rrm and test with only DCA enabled	To configure Open rrm and test with only DCA enabled	Passed	

EWLCJ1712S_Reg_271	Configure Open rrm and test with only TPC enabled	To configure Open rrm and test with only TPC enabled	Passed	
EWLCJ1712S_Reg_272	Configure Open rrm and test with only DBS enabled	To configure Open rrm and test with only DBS enabled	Passed	
EWLCJ1712S_Reg_273	Configure Open rrm and test with different RF algorithm combinations	To configure Open rrm and test with different RF algorithm combinations	Passed	
EWLCJ1712S_Reg_274	Configure Open rrm and test with manually assigned channel bandwidth and channel nos	To configure Open rrm and test with manually assigned channel bandwidth and channel nos	Passed	
EWLCJ1712S_Reg_275	Configure Open rrm and test with 9115, 9120, 9130 AP	To configure Open rrm and test with 9115, 9120, 9130 AP	Passed	
EWLCJ1712S_Reg_276	Configure Open rrm and test with 4800 AP	To configure Open rrm and test with 4800 AP	Passed	

Per client Bidirectional rate limiting, flex local switching

Logical ID	Title	Description	Status	Defect ID
EWLCJ1712S_Reg_387	Configuring rate limit for per Client for Android Client with WPA 2 Personal security with QOS as Silver	To configure rate limit for Client with open security and QOS as silver and check if the Client gets the rate that is been configured or not.	Passed	
EWLCJ1712S_Reg_388	Configuring rate limit for per Client for S10 Client with WPA 2 Personal security with QOS as Silver	To configure rate limit for S10 Client with open security and QOS as silver and check if the Client gets the rate that is been configured or not.	Passed	
EWLCJ1712S_Reg_389	Configuring rate limit for per Client for MAC OS Client with WPA 2 Personal security with QOS as Silver	To configure rate limit for MAC OS Client with open security and QOS as silver and check if the Client gets the rate that is been configured or not.	Passed	
EWLCJ1712S_Reg_390	Configuring rate limit for per Client for IOS Client with WPA 2 Personal security with QOS as Silver	To configure rate limit for IOS Client with open security and QOS as silver and check if the Client gets the rate that is been configured or not.	Passed	
EWLCJ1712S_Reg_391	Configuring rate limit for per Client with QOS as Gold for S10 Client with WPA 2 Enterprise security	To configure rate limit per Client with QOS as Gold and connecting a S10 Client with WPA 2 Enterprise security and check if the rate limit is Applied or not.	Passed	

EWLCJ1712S_Reg_392	Configuring rate limit for per Client with QOS as Gold for Android Client with WPA 2 Enterprise security	To configure rate limit per Client with QOS as Gold and connecting a Android Client with WPA 2 Enterprise security and check if the rate limit is Applied or not.	Passed	
EWLCJ1712S_Reg_393	Configuring rate limit for per Client with QOS as Gold for IOS Client with WPA 2 Enterprise security	To configure rate limit per Client with QOS as Gold and connecting a IOS Client with WPA 2 Enterprise security and check if the rate limit is Applied or not.	Passed	
EWLCJ1712S_Reg_394	Configuring rate limit for per Client with QOS as Gold for MAC OS Client with WPA 2 Enterprise security	To configure rate limit per Client with QOS as Gold and connecting a MAC OS Client with WPA 2 Enterprise security and check if the rate limit is Applied or not.	Passed	
EWLCJ1712S_Reg_395	Connecting a Client to a WLAN configured with rate limit using two different AP	To configure rate limit for Client and connecting a Client to one AP and check the rate limit and making that AP down and connecting the Client to other AP and check if the behaviour of the Client is same or not	Passed	
EWLCJ1712S_Reg_396	Connecting a Client to a WLAN configured with rate limit using one ME capable AP and Non Me capable AP in AP group	To Connecting a Client to a WLAN configured with rate limit using one ME capable AP and Non Me capable AP in AP group	Passed	

EWLCJ1712S_Reg_397	Creating a AVC rule for the WLAN for which rate limit is configured .	To configure lesser rate limit in WLAN and configuring higher rate limit in AVC and check if the rate limit for the Client	Passed	
EWLCJ1712S_Reg_398	Check if windows Client works for bidirectional rate limit	To check if windows Client works for bidirectional rate limit	Passed	
EWLCJ1712S_Reg_399	Check if rate limit varies post roaming scenario	To check if rate limit varies post roaming scenario	Passed	
EWLCJ1712S_Reg_400	Verify rate limit for different models of AP	Verify rate limit for different models of AP	Passed	

Wireless Client Latency Statistics

Logical ID	Title	Description	Status	Defect ID
EWLCJ1712S_Reg_555	Configuring WLAN with WPA Security and PSK Auth	Verify able to Config WLAN with WPA Security and PSK Auth	Passed	
EWLCJ1712S_Reg_556	Verify latency details with an android Client with WPA security	To verify latency details with an android Client with WPA security	Passed	
EWLCJ1712S_Reg_557	Verify latency details with an IOS Client with WPA security	To verify latency details with an IOS Client with WPA security	Passed	
EWLCJ1712S_Reg_558	Verify latency details with an windows Client with WPA security	To verify latency details with an windows Client with WPA security	Passed	
EWLCJ1712S_Reg_559	Verify latency details with an MAC Client with WPA security	To verify latency details with an MAC Client with WPA security	Passed	
EWLCJ1712S_Reg_560	Verify latency details with an Surface Client with WPA security	To verify latency details with an surface Client with WPA security	Passed	
EWLCJ1712S_Reg_561	Configuring WLAN with WPA-2 security and PSK Auth	verify able to config WLAN with WPA-2 security and PSK Auth	Passed	
EWLCJ1712S_Reg_562	Verify latency details with an android Client with WPA-2 security	To verify latency details with an android Client with WPA-2 security	Passed	
EWLCJ1712S_Reg_563	Verify latency details with an IOS Client with WPA-2 security	To verify latency details with an IOS Client with WPA-2 security	Passed	
EWLCJ1712S_Reg_564	Verify latency details with an windows Client with WPA-2 security	To verify latency details with an windows Client with WPA-2 security	Passed	

EWLCJ1712S_Reg_565	Verify latency details with an MAC Client with WPA-2 security	To verify latency details with an MAC Client with WPA-2 security	Passed	
EWLCJ1712S_Reg_566	Verify latency details with an Surface Client with WPA-2 security	To verify latency details with an surface Client with WPA-2 security	Passed	
EWLCJ1712S_Reg_567	Configuring WLAN with WPA3-Dot1x security	verify able to config WLAN with WPA3-Dot1x security	Passed	
EWLCJ1712S_Reg_568	Verify latency details with an android Client with WPA3 - Dot1x configured WLAN	To verify latency details with an android Client with WPA3 - Dot1x configured WLAN	Passed	
EWLCJ1712S_Reg_569	Verify latency details with an IOS Client with WPA3 - Dot1x configured WLAN	To verify latency details with an IOS Client with WPA3 - Dot1x configured WLAN	Passed	
EWLCJ1712S_Reg_570	Verify latency details with an windows Client with WPA3 - Dot1x configured WLAN	To verify latency details with an windows Client with WPA3 - Dot1x configured WLAN	Passed	
EWLCJ1712S_Reg_571	Verify latency details with an MAC Client with WPA3 - Dot1x configured WLAN	To verify latency details with an MAC Client with WPA3 - Dot1x configured WLAN	Passed	
EWLCJ1712S_Reg_572	Verify latency details with an Surface Client with WPA3 - Dot1x configured WLAN	To verify latency details with an surface Client with WPA3 - Dot1x configured WLAN	Passed	
EWLCJ1712S_Reg_573	Verify the Client details of each access category and filter average latency in DNAC	To verify the Client details of each access category and filter average latency in DNAC	Passed	
EWLCJ1712S_Reg_574	Verify the Client details in Client 360 for event viewer tab	To verify the Client details in Client 360 for event viewer tab	Passed	

EWLCJ1712S_Reg_575	Verify the Client details in Client 360 for impact analysis tab	To verify the Client details in Client 360 for impact analysis tab	Passed	
EWLCJ1712S_Reg_576	Verify the Client details in Client 360 for correlation tab	To verify the Client details in Client 360 for correlation tab	Passed	

PER SSID filtering for assurance on Cat9800

Logical ID	Title	Description	Status	Defect ID
EWLCJ1712S_Reg_653	Configure per ssid filtering from CLI for 9800-L controller	To configure per ssid filtering from CLI for 9800-L controller	Passed	
EWLCJ1712S_Reg_654	Configure per ssid filtering from CLI for 9800-CL controller	To configure per ssid filtering from CLI for 9800-CL controller	Passed	
EWLCJ1712S_Reg_655	Configure per ssid filtering from CLI for 9800-80 controller	To configure per ssid filtering from CLI for 9800-80 controller	Passed	
EWLCJ1712S_Reg_656	Check for windows Client connectivity and verify Client related details for the configured ssid	To check for windows Client connectivity and verify Client related details for the configured ssid	Passed	
EWLCJ1712S_Reg_657	Check for MAC Client connectivity and verify Client related details for the configured ssid	To check for MAC Client connectivity and verify Client related details for the configured ssid	Passed	
EWLCJ1712S_Reg_658	Check for Android Client connectivity and verify Client related details for the configured ssid	To check for Android Client connectivity and verify Client related details for the configured ssid	Passed	
EWLCJ1712S_Reg_659	Check for IOS Client connectivity and verify Client related details for the configured ssid	To check for IOS Client connectivity and verify Client related details for the configured ssid	Passed	
EWLCJ1712S_Reg_660	Check for surface Client connectivity and verify Client related details for the configured ssid	To check for surface Client connectivity and verify Client related details for the configured ssid	Passed	

EWLCJ1712S_Reg_661	Compare and verify the Client related details changes before and after per ssid filtering	To compare and verify the Client related details changes before and after per ssid filtering	Passed	
EWLCJ1712S_Reg_662	Check whether the 9105 AP support per ssid filtering	To check whether the 9105 AP support per ssid filtering	Passed	
EWLCJ1712S_Reg_663	Check whether the 9115 AP support per ssid filtering	To check whether the 9115 AP support per ssid filtering	Passed	
EWLCJ1712S_Reg_664	Check whether the 9120 AP support per ssid filtering	To check whether the 9120 AP support per ssid filtering	Passed	
EWLCJ1712S_Reg_665	Check whether the 9130 AP support per ssid filtering	To check whether the 9130 AP support per ssid filtering	Passed	
EWLCJ1712S_Reg_666	Check whether the open security ssid supports per ssid filtering	To check whether the open security ssid supports per ssid filtering	Passed	
EWLCJ1712S_Reg_667	Check whether the wpa2-802.1x security ssid supports per ssid filtering	To check whether the wpa2-802.1x security ssid supports per ssid filtering	Passed	
EWLCJ1712S_Reg_668	Check whether the wpa2-psk security ssid supports per ssid filtering	To check whether the wpa2-psk security ssid supports per ssid filtering	Passed	
EWLCJ1712S_Reg_669	Check whether the wpa3-802.1x security ssid supports per ssid filtering	To check whether the wpa3-802.1x security ssid supports per ssid filtering	Passed	
EWLCJ1712S_Reg_670	Check whether the wpa3-sae security ssid supports per ssid filtering	To check whether the wpa3-sae security ssid supports per ssid filtering	Passed	

EWLCJ1712S_Reg_671	Check Whether the windows Clients information are seen in DNAC after configuring per ssid filtering	To check Whether the windows Clients information are seen in DNAC after configuring per ssid filtering	Passed	
EWLCJ1712S_Reg_672	Check Whether the MAC Clients information are seen in DNAC after configuring per ssid filtering	To check Whether the MAC Clients information are seen in DNAC after configuring per ssid filtering	Passed	
EWLCJ1712S_Reg_673	Check Whether the IOS Clients information are seen in DNAC after configuring per ssid filtering	To check Whether the IOS Clients information are seen in DNAC after configuring per ssid filtering	Passed	
EWLCJ1712S_Reg_674	Check Whether the android Clients information are seen in DNAC after configuring per ssid filtering	To check Whether the android Clients information are seen in DNAC after configuring per ssid filtering	Passed	
EWLCJ1712S_Reg_675	Check Whether the surface Clients information are seen in DNAC after configuring per ssid filtering	To check Whether the surface Clients information are seen in DNAC after configuring per ssid filtering	Passed	

Provide alert mechanism on web-ui for critical events on controller

Logical ID	Title	Description	Status	Defect ID
EWLCJ1712S_Reg_358	Verify alerts are displayed for critical events	To Verify alerts are displayed for critical events	Passed	
EWLCJ1712S_Reg_359	Verify alerts are displayed for alert events	To Verify alerts are displayed for alert events	Passed	
EWLCJ1712S_Reg_360	Verify alerts are displayed for emergency events	To Verify alerts are displayed for emergency events	Passed	
EWLCJ1712S_Reg_361	Export syslog events	To Export syslog events from WebUI	Passed	CSCwf37578
EWLCJ1712S_Reg_362	Verify user able to filter options	To Verify user able to filter syslog messages	Passed	
EWLCJ1712S_Reg_363	Disable Event banner	To Disable Event banner using preference	Passed	
EWLCJ1712S_Reg_364	Enable Event banner	To Enable Event banner using preference	Passed	
EWLCJ1712S_Reg_365	Delete an Event Notification	To Delete an Event Notification	Passed	
EWLCJ1712S_Reg_366	Delete multiple/all Event Notification	To Delete multiple/all Event Notification	Passed	
EWLCJ1712S_Reg_367	Verify Event count in Pie chart	To Verify Event count are properly shown in Pie chart	Passed	
EWLCJ1712S_Reg_368	Force Switchover in HA and verify alerts are shown	To Force Switchover in HA and verify alerts are shown	Passed	
EWLCJ1712S_Reg_369	Verify Banner preferences after switchover in HA	To Verify Banner preferences after switchover in HA	Passed	

PSK + Multi Auth Support for Guest

Logical ID	Title	Description	Status	Defect ID
EWLCJ1712S_Reg_120	Creating WLAN with WPA2 Security with MPSK	Verify WLAN Creating with WPA2 Security with MPSK	Passed	
EWLCJ1712S_Reg_121	Edit WPA2 Security PSK Keys on MPSK	Verify WLAN Edit with WPA2 Security with MPSK	Passed	
EWLCJ1712S_Reg_122	Delete WPA2 Security PSK Keys on MPSK	Verify WLAN Delete with WPA2 Security with MPSK	Passed	
EWLCJ1712S_Reg_123	Creating WLAN with WPA2 Security with MPSK - Format with Hexa:	Verify Creating WLAN with WPA2 Security with MPSK - Format with Hexa:	Passed	
EWLCJ1712S_Reg_124	Creating WLAN with WPA2 Security with MPSK - Password Type : AES :	Verify the Security Type with Advance Security	Passed	
EWLCJ1712S_Reg_125	Verify WPA2 Security with MPSK Applied in WLAN's with Window's Clients with all the 5 Key Combinations	Verify WPA2 Security with MPSK Applied in WLAN's with Window's Clients with all the 5 Key Combinations	Passed	
EWLCJ1712S_Reg_126	Connect the MAC Clients	Verify Connect the MAC Clients with all the 5 Key Combinations	Passed	
EWLCJ1712S_Reg_127	Connect the Android Clients	Verify Connect the Android Clients with all the 5 Key Combinations:	Passed	
EWLCJ1712S_Reg_128	Connect the Apple Mobile Clients with all the 5 Key Combinations:	Verify Connect the Apple Clients with all the 5 Key Combinations:	Passed	

EWLCJ1712S_Reg_129	Connect the Windows Clients with all the 5 Key Combinations:	Verify Connect the Windows Clients with all the 5 Key Combinations:	Passed	
EWLCJ1712S_Reg_130	MPSK with AP Model 9115	Verify the Configurations with AP Different AP Model 9115	Passed	
EWLCJ1712S_Reg_131	Connect AP Model 9120	Verify the Configurations with AP Different AP Model 9120:	Passed	
EWLCJ1712S_Reg_132	Connect AP Model 4800	Verify the Configurations with AP Different AP Model 4800:	Passed	
EWLCJ1712S_Reg_133	Connect AP Model 3800	Verify the Configurations with AP Different AP Model 3800	Passed	
EWLCJ1712S_Reg_134	Connect AP Model 9105	Verify the Configurations with AP Different AP Model 9105	Passed	
EWLCJ1712S_Reg_135	Connect AP Model 9130	Verify the Configurations with AP Different AP Model 9130	Passed	

Rolling AP Upgrade Enhancements

Logical ID	Title	Description	Status	Defect ID
EWLCJ1712S_Reg_704	Providing the same controller name and ip address for primary controller and N+1 controller	To check whether the same controller name is accepted or not for primary controller and N+1 controller	Passed	
EWLCJ1712S_Reg_705	Upgrading the software image in a controller	To check whether the software image is upgraded in controller	Passed	CSCwf67245
EWLCJ1712S_Reg_706	Scheduling the time to upgrade the software image into a controller.	To check whether the software image is upgraded into a controller in scheduling time	Passed	
EWLCJ1712S_Reg_707	Scheduling the time "Now" to upgrade the software image into a controller.	To check whether the software image is upgraded into a controller in scheduling time "Now"	Passed	
EWLCJ1712S_Reg_708	Resync trigger to Controller from DNAC after upgrade the software image in controller.	To check whether Controller is reloaded when triggering from DNAC after upgrade the software image in controller.	Passed	
EWLCJ1712S_Reg_709	Upgrade the wrong software image into the Controller from DNAC	To verify whether the error message will display when trying to upgrade wrong software image into the Controller from DNAC	Passed	
EWLCJ1712S_Reg_710	AP joining status to Controller after upgrade the software image	To check whether the joined APs upgraded with controller image	Passed	

EWLCJ1712S_Reg_711	Verify the Client connectivity status to Controller after upgrade the software image	To check whether the Client associate with controller	Passed	
EWLCJ1712S_Reg_712	Upgrading the software image into existing group of AP	To check whether the software image is upgraded into existing group of AP	Passed	
EWLCJ1712S_Reg_713	Import the image to image repository using HTTP	To check whether the WLC is upgraded using TFTP from PI	Passed	
EWLCJ1712S_Reg_714	Import the image to image repository using FTP	To check whether the WLC is upgraded using FTP from PI	Passed	

Scheduling of SSID broadcast

Logical ID	Title	Description	Status	Defect ID
EWLCJ1712S_Reg_308	Configure Daily Calendar Profile	To configure Daily Calendar Profile	Passed	
EWLCJ1712S_Reg_309	Configure Weekly Calendar Profile	To configure Weekly Calendar Profile	Passed	
EWLCJ1712S_Reg_310	Configure Monthly Calendar Profile	To configure Monthly Calendar Profile	Passed	
EWLCJ1712S_Reg_311	Configure Daily, Weekly and Monthly Calendar Profile through CLI	To configure Daily, Weekly and Monthly Calendar Profile through CLI	Passed	
EWLCJ1712S_Reg_312	MAP Calendar Profile to a Policy Profile	To MAP Calendar Profile to a Policy Profile	Passed	CSCwf68752
EWLCJ1712S_Reg_313	Try deleting the calendar profile when it is already attached to the policy profile	To try deleting the calendar profile when it is already attached to the policy profile	Passed	
EWLCJ1712S_Reg_314	While the calendar profile is attached to policy profile, update the timer range for calendar profile	To update the timer range for calendar profile	Passed	
EWLCJ1712S_Reg_315	Delete the calendar profile from the policy profile	To delete the calendar profile from the policy profile	Passed	
EWLCJ1712S_Reg_316	MAP multiple calendar profiles to a Policy Profile	To MAP multiple calendar profiles to a Policy Profile	Passed	
EWLCJ1712S_Reg_317	Verify Windows Client is able to connect to the WLAN only during the configured times	To verify Windows Client is able to connect to the WLAN only during the configured times	Passed	

EWLCJ1712S_Reg_318	Verify Android Client is able to connect to the WLAN only during the configured times	To verify Android Client is able to connect to the WLAN only during the configured times	Passed	
EWLCJ1712S_Reg_319	Verify IOS Client is able to connect to the WLAN only during the configured times	To verify IOS Client is able to connect to the WLAN only during the configured times	Passed	
EWLCJ1712S_Reg_320	Verify MAC Client is able to connect to the WLAN only during the configured times	To verify MAC Client is able to connect to the WLAN only during the configured times	Passed	
EWLCJ1712S_Reg_321	Verify Surface Client is able to connect to the WLAN only during the configured times	To verify Surface Client is able to connect to the WLAN only during the configured times	Passed	
EWLCJ1712S_Reg_322	Verify Client is able to connect to the WLAN in Flex mode only during the configured times	To verify Client is able to connect to the WLAN in Flex mode only during the configured times	Passed	

Smart Licencing

Logical ID	Title	Description	Status	Defect ID
EWLCJ1712S_Reg_161	Smart Account Creation, registration and activation.	To verify smart Account Creation, registration and activation.	Passed	
EWLCJ1712S_Reg_162	Enable Smart Licencing and Register Device	To enable Smart Licencing and Register Device	Passed	
EWLCJ1712S_Reg_163	Smart License Reservation	To perform Smart License Reservation and verify details	Passed	
EWLCJ1712S_Reg_164	Deleting SLR Licenses	To verify by deleting SLR Licenses	Passed	
EWLCJ1712S_Reg_165	Smart Licencing HA Support	To verify Smart Licencing for HA Support	Passed	
EWLCJ1712S_Reg_166	Change a SLR on a C9800 SSO HA pair	To change a SLR on a C9800 SSO HA pair	Passed	
EWLCJ1712S_Reg_167	Removing SLR from a C9800 SSO HA pair	To verify by removing SLR from a C9800 SSO HA pair	Passed	
EWLCJ1712S_Reg_168	Validate license info in HA SSO RMI pair	To validate license info in HA SSO RMI pair	Passed	
EWLCJ1712S_Reg_169	Validate license info on Standby unit directly	To validate license info on standby unit directly	Passed	
EWLCJ1712S_Reg_170	Validate license info after ISSU upgrade	To validate license info after ISSU upgrade	Passed	
EWLCJ1712S_Reg_171	Validate license info after multiple switchover	To validate license info after multiple switchover	Passed	
EWLCJ1712S_Reg_172	Validate license info on multiple reload	To validate license info on multiple reboot	Passed	

SSID per radio on Dual 5G

Logical ID	Title	Description	Status	Defect ID
EWLCJ1712S_Reg_95	Associate Client to 5 GHz radio policy with slot 0	To verify slot details shown or not	Passed	
EWLCJ1712S_Reg_96	Associate Client to 5 GHz radio policy with slot 1	To verify slot details shown or not	Passed	
EWLCJ1712S_Reg_97	Associate Client to 5 GHz radio policy with slot 2	To verify slot details shown or not	Passed	
EWLCJ1712S_Reg_98	Creating WLAN with 6 GHz radio policy	To Validate Client details with 6 GHz radio	Passed	
EWLCJ1712S_Reg_99	Associating windows Client to 9115 AP with WPA2 security type for 2.4GHz radio policy	To Verify Windows Client associate to 2.4 GHz radio with WPA2 security type or not	Passed	
EWLCJ1712S_Reg_100	Associating Android Client to 9120 AP with WPA2 security type for 5GHz radio policy	To Verify android Client associate to 5 GHz radio with WPA2 security type or not	Passed	
EWLCJ1712S_Reg_101	Associating IOS Client to 9130 AP with WPA2 security type for 6GHz radio policy	To Verify IOS Client associate to 6 GHz radio with WPA2 security type or not	Passed	
EWLCJ1712S_Reg_102	Associating MAC Client to 9105 AP with WPA3 security type for 2.4GHz radio policy	To Verify MAC Client associate to 2.4 GHz radio with WPA3 security type or not	Passed	
EWLCJ1712S_Reg_103	Associating Ms-go Client to 9115 AP with WPA3 security type for 5GHz radio policy	To associate the Client and verifying EDCA parameter	Passed	

EWLCJ1712S_Reg_104	Associating MS-GO2 Client to 9120 AP with WPA3 + AES cipher + OWE AKM security type for 6GHz radio policy	To Verify MS-GO2 Client associate to 6 GHz radio with WPA3 + AES cipher + OWE AKM security type or not	Passed	
EWLCJ1712S_Reg_105	Associating Client with WPA3 + AES cipher + 802.1x-SHA256 AKM security type for 6GHz radio policy	To Verify Windows Client associate to 6 GHz radio with WPA3 security type or not	Passed	
EWLCJ1712S_Reg_106	Associating Client with WPA3 + AES cipher + SAE AKM security type for 6GHz radio policy	To Verify Client associate to 6 GHz radio with WPA3 + AES cipher + SAE AKM security type or not	Passed	
EWLCJ1712S_Reg_107	Associating Client with WPA3 + CCMP256 cipher + SUITEB192-1X AKM security type for 6GHz radio policy	To Verify Client associate to 6 GHz radio with WPA3 + CCMP256 cipher + SUITEB192-1X AKM security type or not	Passed	
EWLCJ1712S_Reg_108	Associating Client with WPA3 + GCMP256 cipher + SUITEB-1X AKM security type for 6GHz radio policy	To Verify Client associate to 6 GHz radio with WPA3 + GCMP256 cipher + SUITEB-1X AKM security type or not	Passed	
EWLCJ1712S_Reg_109	Associating Client with WPA3 + GCMP128 cipher + SUITEB192-1X AKM security type for 6GHz radio policy	To Verify Client associate to 6 GHz radio with WPA3 + GCMP128 cipher + SUITEB192-1X AKM security type or not	Passed	
EWLCJ1712S_Reg_110	Associating Client with WPA3 + adaptive WPA2 security type for 6GHz radio policy	To Verify Client associate to 6 GHz radio with WPA3 + adaptive WPA2 security type or not	Passed	

EWLCJ1712S_Reg_111	Perform inter roaming across different radio policy	To verify radio policy details after inter roaming	Passed	
EWLCJ1712S_Reg_112	Perform intra roaming across different radio policy	To verify radio policy details after intra roaming	Passed	
EWLCJ1712S_Reg_113	Perform IRCM across different radio policy	To verify radio policy details after IRCM	Passed	
EWLCJ1712S_Reg_114	Validate radio policy details in PI	To verify radio policy details after config pushed to PI	Passed	
EWLCJ1712S_Reg_115	Validate 2.4 GHz radio policy details in DNAC	To verify 2.4 GHz radio policy details after config pushed to DNAC	Passed	
EWLCJ1712S_Reg_116	Validate 5 GHz radio policy details in DNAC	To verify 5 GHz radio policy details after config pushed to DNAC	Passed	
EWLCJ1712S_Reg_117	Validate 6 GHz radio policy details in DNAC	To verify 6 GHz radio policy details after config pushed to DNAC	Passed	
EWLCJ1712S_Reg_118	Validate slots of radio policy in CMX	To verify 5 GHz radio slots difference in CMX	Passed	
EWLCJ1712S_Reg_119	Limit the Client by radio policy	To verify the no of Client associate with particular radio policy	Passed	

Secure Data Wipe

Logical ID	Title	Description	Status	Defect ID
EWLCJ1712S_Reg_608	Do Data Wipe in 9120 AP from 9800-L Controller	To do Data Wipe in 9120 AP from 9800-L Controller UI and CLI and Check for Data sanitization logs from AP console	Passed	
EWLCJ1712S_Reg_609	Do Data Wipe in 9130 AP from 9800-L Controller	To do Data Wipe in 9130 AP from 9800-L Controller UI and CLI and Check for Data sanitization logs from AP console	Passed	
EWLCJ1712S_Reg_610	Do Data Wipe in 9115 AP from 9800-L Controller	To do Data Wipe in 9115 AP from 9800-L Controller UI and CLI and Check for Data sanitization logs from AP console	Passed	
EWLCJ1712S_Reg_611	Do Data Wipe in 9105 AP from 9800-L Controller	To do Data Wipe in 9105 AP from 9800-L Controller UI and CLI and Check for Data sanitization logs from AP console	Passed	
EWLCJ1712S_Reg_612	Do Data Wipe in 9124 AP from 9800-L Controller	To do Data Wipe in 9124 AP from 9800-L Controller UI and CLI and Check for Data sanitization logs from AP console	Passed	
EWLCJ1712S_Reg_613	Do Data Wipe in 9164 AP from 9800-L Controller	To do Data Wipe in 9164 AP from 9800-L Controller UI and CLI and Check for Data sanitization logs from AP console	Passed	

EWLCJ1712S_Reg_614	Do Data Wipe in 9166 AP from 9800-L Controller	To do Data Wipe in 9166 AP from 9800-L Controller UI and CLI and Check for Data sanitization logs from AP console	Passed	
EWLCJ1712S_Reg_615	Do Data Wipe in 4800 AP from 9800-L Controller	To do Data Wipe in 4800 AP from 9800-L Controller UI and CLI and Check for Data sanitization logs from AP console	Passed	
EWLCJ1712S_Reg_616	Do Data Wipe in 9120 AP from 9800-CL Controller	To do Data Wipe in 9120 AP from 9800-CL Controller UI and CLI and Check for Data sanitization logs from AP console	Passed	
EWLCJ1712S_Reg_617	Do Data Wipe in 9130 AP from 9800-CL Controller	To do Data Wipe in 9130 AP from 9800-CL Controller UI and CLI and Check for Data sanitization logs from AP console	Passed	
EWLCJ1712S_Reg_618	Do Data Wipe in 9115 AP from 9800-CL Controller	To do Data Wipe in 9115 AP from 9800-CL Controller UI and CLI and Check for Data sanitization logs from AP console	Passed	
EWLCJ1712S_Reg_619	Do Data Wipe in 9105 AP from 9800-CL Controller	To do Data Wipe in 9105 AP from 9800-CL Controller UI and CLI and Check for Data sanitization logs from AP console	Passed	

EWLCJ1712S_Reg_620	Do Data Wipe in 9124 AP from 9800-CL Controller	To do Data Wipe in 9124 AP from 9800-CL Controller UI and CLI and Check for Data sanitization logs from AP console	Passed	
EWLCJ1712S_Reg_621	Do Data Wipe in 9164 AP from 9800-CL Controller	To do Data Wipe in 9164 AP from 9800-CL Controller UI and CLI and Check for Data sanitization logs from AP console	Passed	
EWLCJ1712S_Reg_622	Do Data Wipe in 9166 AP from 9800-CL Controller	To do Data Wipe in 9166 AP from 9800-CL Controller UI and CLI and Check for Data sanitization logs from AP console	Passed	
EWLCJ1712S_Reg_623	Do Data Wipe in 4800 AP from 9800-CL Controller	To do Data Wipe in 4800 AP from 9800-CL Controller UI and CLI and Check for Data sanitization logs from AP console	Passed	
EWLCJ1712S_Reg_624	Do Data Wipe in 9120 AP from 9800-80 Controller	To do Data Wipe in 9120 AP from 9800-80 Controller UI and CLI and Check for Data sanitization logs from AP console	Passed	
EWLCJ1712S_Reg_625	Do Data Wipe in 9130 AP from 9800-80 Controller	To do Data Wipe in 9130 AP from 9800-80 Controller UI and CLI and Check for Data sanitization logs from AP console	Passed	

EWLCJ1712S_Reg_626	Do Data Wipe in 9115 AP from 9800-80 Controller	To do Data Wipe in 9115 AP from 9800-80 Controller UI and CLI and Check for Data sanitization logs from AP console	Passed	
EWLCJ1712S_Reg_627	Do Data Wipe in 9105 AP from 9800-80 Controller	To do Data Wipe in 9105 AP from 9800-80 Controller UI and CLI and Check for Data sanitization logs from AP console	Passed	
EWLCJ1712S_Reg_628	Do Data Wipe in 9124 AP from 9800-80 Controller	To do Data Wipe in 9124 AP from 9800-80 Controller UI and CLI and Check for Data sanitization logs from AP console	Passed	
EWLCJ1712S_Reg_629	Do Data Wipe in 9164 AP from 9800-80 Controller	To do Data Wipe in 9164 AP from 9800-80 Controller UI and CLI and Check for Data sanitization logs from AP console	Passed	
EWLCJ1712S_Reg_630	Do Data Wipe in 9166 AP from 9800-80 Controller	To do Data Wipe in 9166 AP from 9800-80 Controller UI and CLI and Check for Data sanitization logs from AP console	Passed	
EWLCJ1712S_Reg_631	Do Data Wipe in 4800 AP from 9800-80 Controller	To do Data Wipe in 4800 AP from 9800-80 Controller UI and CLI and Check for Data sanitization logs from AP console	Passed	
EWLCJ1712S_Reg_632	Do Data wipe from 9120 AP console	To do Data wipe from 9120 AP console and check for Data sanitization logs	Passed	

EWLCJ1712S_Reg_633	Do Data wipe from 9130 AP console	To do Data wipe from 9130 AP console and check for Data sanitization logs	Passed	
EWLCJ1712S_Reg_634	Do Data wipe from 9115 AP console	To do Data wipe from 9115 AP console and check for Data sanitization logs	Passed	
EWLCJ1712S_Reg_635	Do Data wipe from 9105 AP console	To do Data wipe from 9105 AP console and check for Data sanitization logs	Passed	
EWLCJ1712S_Reg_636	Do Data wipe from 9124 AP console	To do Data wipe from 9124 AP console and check for Data sanitization logs	Passed	
EWLCJ1712S_Reg_637	Do Data wipe from 9164 AP console	To do Data wipe from 9164 AP console and check for Data sanitization logs	Passed	
EWLCJ1712S_Reg_638	Do Data wipe from 9166 AP console	To do Data wipe from 9166 AP console and check for Data sanitization logs	Passed	
EWLCJ1712S_Reg_639	Do Data wipe in 9120 AP with mode reset button	To do Data wipe in 9120 AP with help of mode reset button and check for Data sanitization logs	Passed	
EWLCJ1712S_Reg_640	Do Data wipe in 9130 AP with mode reset button	To do Data wipe in 9130 AP with help of mode reset button and check for Data sanitization logs	Passed	
EWLCJ1712S_Reg_641	Do Data wipe in 9115 AP with mode reset button	To do Data wipe in 9115 AP with help of mode reset button and check for Data sanitization logs	Passed	

EWLCJ1712S_Reg_642	Do Data wipe in 9105 AP with mode reset button	To do Data wipe in 9105 AP with help of mode reset button and check for Data sanitization logs	Passed	
EWLCJ1712S_Reg_643	Do Data wipe in 9124 AP with mode reset button	To do Data wipe in 9124 AP with help of mode reset button and check for Data sanitization logs	Passed	
EWLCJ1712S_Reg_644	Do Data wipe in 9164 AP with mode reset button	To do Data wipe in 9164 AP with help of mode reset button and check for Data sanitization logs	Passed	
EWLCJ1712S_Reg_645	Do Data wipe in 9166 AP with mode reset button	To do Data wipe in 9166 AP with help of mode reset button and check for Data sanitization logs	Passed	
EWLCJ1712S_Reg_646	Do Data wipe in 4800 AP with mode reset button	To do Data wipe in 4800 AP with help of mode reset button and check for Data sanitization logs	Passed	
EWLCJ1712S_Reg_647	Do Data wipe several times on single AP	To do Data wipe several times in a single AP and check for Data sanitization logs	Passed	
EWLCJ1712S_Reg_648	Do Data Wipe when AP connected to Windows Client	To do Data Wipe when AP connected to Windows Client	Passed	
EWLCJ1712S_Reg_649	Do Data Wipe when AP connected to Android Client	To do Data Wipe when AP connected to Android Client	Passed	
EWLCJ1712S_Reg_650	Do Data Wipe when AP connected to MAC Client	To do Data Wipe when AP connected to MAC Client	Passed	
EWLCJ1712S_Reg_651	Do Data Wipe when AP connected to Surface Client	To do Data Wipe when AP connected to Surface Client	Passed	
EWLCJ1712S_Reg_652	Do Data Wipe when AP connected to IOS Client	To do Data Wipe when AP connected to IOS Client	Passed	

To share Client Delete reason code at AP to controller

Logical ID	Title	Description	Status	Defect ID
EWLCJ1712S_Reg_48	Verify Client delete reason code for Webauth timer expiry when AP is in Local mode	LWA webauth timer expire	Passed	
EWLCJ1712S_Reg_49	Verify Client delete reason code for Webauth timer expiry when AP is in Flex mode	LWA webauth timer expire	Passed	
EWLCJ1712S_Reg_50	Verify Client delete reason code for MAC filtering	MAB authentication failed for Wireless Client	Passed	
EWLCJ1712S_Reg_51	Verify Client delete reason code for MAC filtering when AP is in Flex mode	MAB authentication failed for Wireless Client	Passed	
EWLCJ1712S_Reg_52	Verify Client delete reason code for Wrong PSK	To verify Client delete reason code for Wrong PSK	Passed	
EWLCJ1712S_Reg_53	Verify Client delete reason code for Wrong PSK when AP is in Flex mode	To verify Client delete reason code for Wrong PSK	Passed	
EWLCJ1712S_Reg_54	Verify Client delete reason code for dot1x timer expired	Deleting the Client due to the expiry dot1x timer	Passed	
EWLCJ1712S_Reg_55	Verify Client Manually Excluded with reason code	To verify Client Manually Excluded with reason code	Passed	
EWLCJ1712S_Reg_56	Verify Client delete reason code for VLAN mismatch	To verify Client delete reason code for VLAN mismatch	Passed	
EWLCJ1712S_Reg_57	Verify Android Client delete reason code for dot1x authentication failure	Deleting the Android Client due to the dot1x authentication failure	Passed	

EWLCJ1712S_Reg_58	Verify Windows Client delete reason code for dot1x authentication failure	Deleting the Windows Client due to dot1x authentication failure	Passed	
EWLCJ1712S_Reg_59	Verify IOS Client delete reason code for dot1x authentication failure	Deleting the IOS Client due to dot1x authentication failure	Passed	
EWLCJ1712S_Reg_60	Verify Surface Client delete reason code for dot1x authentication failure	Deleting the Surface Client due to dot1x authentication failure	Passed	
EWLCJ1712S_Reg_61	Verify Client delete reason code for dot1x authentication failure when AP is in Flex mode	Deleting the Client due to dot1x authentication failure	Passed	
EWLCJ1712S_Reg_62	Verify syslog when Client connected with run state	To verify syslog when Client connected with run state	Passed	
EWLCJ1712S_Reg_63	Verify Client delete reason code for IP learn state	To verify Client delete reason code for IP learn state	Passed	
EWLCJ1712S_Reg_64	Checking the Client delete reason when Client using wrong bssid while associating	To check the Client delete reason when Client using wrong BSSID while associating	Passed	
EWLCJ1712S_Reg_65	Configure Roaming between controllers and verify Client delete reason	To configure Roaming between controllers and verify Client delete reason	Passed	
EWLCJ1712S_Reg_66	Verify Client delete reason CO_CLIENT_DELETE_REASON_MN_AP_FLEX_FT_FAILURE due to FT roaming failure	To verify Client delete reason due to FT roaming failure	Passed	

EWLCJ1712S_Reg_67	Using DNAC verify Client delete reason CO_CLIENT_DELETE_REASON_MN_AP_CLSM_WEBAUTH_TIMER_EXPIRED	Using DNAC, to verify Client delete reason CO_CLIENT_DELETE_REASON_MN_AP_CLSM_WEBAUTH_TIMER_EXPIRED	Passed	
EWLCJ1712S_Reg_68	Verify Client delete reason CO_CLIENT_DELETE_REASON_MN_AP_IPLEARN_TIMEOUT	Client failed to get IP within this period	Passed	
EWLCJ1712S_Reg_69	Verify Client delete reason code for Wired LAN	Deleting the Clients connected to a port	Passed	

New AAA Command

Logical ID	Title	Description	Status	Defect ID
EWLCJ1712S_Reg_577	Validating the AAA radius server in server/groups	To check if the AAA radius server details in server/group	Failed	CSCwf74020
EWLCJ1712S_Reg_578	Verify Attribute list name in AAA advanced shows correctly	To check the Attribute list name in AAA advanced page shows correctly	Passed	
EWLCJ1712S_Reg_579	configuring AAA Accounting in AAA method list	Verify AAA Accounting in AAA method list	Passed	
EWLCJ1712S_Reg_580	Configuring password policy in AAA Advanced	To check the password policy details in AAA A advanced shows correctly	Passed	
EWLCJ1712S_Reg_581	Enable the Authorize AP's against MAC	To Enable the Authorize AP's against MAC	Passed	
EWLCJ1712S_Reg_582	verifying AAA LDAP server in server/groups	To check the AAA LDAP server in server/groups page	Passed	
EWLCJ1712S_Reg_583	Configuring AAA Authentication details in AAA method	To Configure the AAA Authentication details in AAA method	Passed	CSCwf57089
EWLCJ1712S_Reg_584	Check AAA Accounting in method list name	To Check the AAA Accounting in method list name	Passed	
EWLCJ1712S_Reg_585	Validate the MAC Filtering in AAA Advanced	To validate the MAC Filtering in AAA Advanced	Passed	
EWLCJ1712S_Reg_586	Verify radius fallback in AAA Advanced	To Verify the radius fallback in AAA Advanced	Passed	
EWLCJ1712S_Reg_587	Configuring Global Config in AAA Advanced	To Configure Global Config in AAA Advanced	Passed	

EWLCJ1712S_Reg_588	Enable load balance in AAA radius server group	To Enable the load balance in AAA radius server group & checking the AAA radius server group	Passed	
--------------------	--	--	--------	--

Wireless Troubleshooting on DNAC - AP Troubleshooting Workflow

Logical ID	Title	Description	Status	Defect ID
EWLCJ1712S_Reg_499	Generate Logs for 9120 AP Join/Connectivity Issues	To generate Logs for RF Issues	Passed	
EWLCJ1712S_Reg_500	Generate Logs for 9130 AP Join/Connectivity Issues	To generate Logs for RRM (Radio Resource Management) Issues	Passed	
EWLCJ1712S_Reg_501	Generate Logs for 9115 AP Join/Connectivity Issues	To generate Logs for WLC Platform Issues	Passed	
EWLCJ1712S_Reg_502	Generate Logs for 9105 AP Join/Connectivity Issues	To generate Logs for AP Join/Connectivity Issues	Passed	CSCwf24697
EWLCJ1712S_Reg_503	Generate Logs for Client Connectivity Issues	To generate Logs for Client Connectivity Issues	Passed	
EWLCJ1712S_Reg_504	Generate Logs for Intra roaming issue	To generate Logs for Guest Central Web Authentication(CWA) or Local Web Authentication(LWA) Issues	Passed	
EWLCJ1712S_Reg_505	Generate Logs for Inter roaming Issues	To generate Logs for License Issues	Passed	
EWLCJ1712S_Reg_506	Generate Logs for High Availability issues	To generate Logs for High Availability issues	Passed	
EWLCJ1712S_Reg_507	Generate Logs for Windows Client Connectivity Issues	To generate Logs for Windows Client Connectivity Issues	Passed	
EWLCJ1712S_Reg_508	Generate Logs for Android Client Connectivity Issues	To generate Logs for Android Client Connectivity Issues	Passed	

EWLCJ1712S_Reg_509	Generate Logs for MAC Client Connectivity Issues	To generate Logs for MAC Client Connectivity Issues	Passed	
EWLCJ1712S_Reg_510	Generate Logs for Surface Client Connectivity Issues	To generate Logs for Surface Client Connectivity Issues	Passed	
EWLCJ1712S_Reg_511	Generate Logs for Wired Client Connectivity Issues	To generate Logs for Wired Client Connectivity Issues	Passed	
EWLCJ1712S_Reg_512	Generate Logs for RF Issues	To generate Logs for RF Issues	Passed	
EWLCJ1712S_Reg_513	Generate Logs for RRM (Radio Resource Management) Issues	To generate Logs for RRM (Radio Resource Management) Issues	Passed	
EWLCJ1712S_Reg_514	Generate Logs for WLC Platform Issues	To generate Logs for WLC Platform Issues	Passed	

Wireless Troubleshooting on DNAC - Multi WLC Log collection

Logical ID	Title	Description	Status	Defect ID
EWLCJ1712S_Reg_676	Generate Logs for RF Issues	To generate Logs for RF Issues	Passed	
EWLCJ1712S_Reg_677	Generate Logs for RRM (Radio Resource Management) Issues	To generate Logs for RRM (Radio Resource Management) Issues	Passed	
EWLCJ1712S_Reg_678	Generate Logs for WLC Platform Issues	To generate Logs for WLC Platform Issues	Passed	
EWLCJ1712S_Reg_679	Generate Logs for AP Join/Connectivity Issues	To generate Logs for AP Join/Connectivity Issues	Passed	
EWLCJ1712S_Reg_680	Generate Logs for Client Connectivity Issues	To generate Logs for Client Connectivity Issues	Passed	
EWLCJ1712S_Reg_681	Generate Logs for Guest Central Web Authentication(CWA) or Local Web Authentication(LWA) Issues	To generate Logs for Guest Central Web Authentication(CWA) or Local Web Authentication(LWA) Issues	Passed	
EWLCJ1712S_Reg_682	Generate Logs for License Issues	To generate Logs for License Issues	Passed	
EWLCJ1712S_Reg_683	Generate Logs for High Availability issues	To generate Logs for High Availability issues	Passed	
EWLCJ1712S_Reg_684	Generate Logs for Windows Client Connectivity Issues	To generate Logs for Windows Client Connectivity Issues	Passed	
EWLCJ1712S_Reg_685	Generate Logs for Android Client Connectivity Issues	To generate Logs for Android Client Connectivity Issues	Passed	
EWLCJ1712S_Reg_686	Generate Logs for MAC Client Connectivity Issues	To generate Logs for MAC Client Connectivity Issues	Passed	
EWLCJ1712S_Reg_687	Generate Logs for Surface Client Connectivity Issues	To generate Logs for Surface Client Connectivity Issues	Passed	

EWLCJ1712S_Reg_688	Generate Logs for Wired Client Connectivity Issues	To generate Logs for Wired Client Connectivity Issues	Passed	
--------------------	--	---	--------	--

WPA3 SAE client exclusion optimization for local mode

Logical ID	Title	Description	Status	Defect ID
EWLCJ1712S_Reg_515	Configure SAE using CLI	To Configure SAE using CLI	Passed	
EWLCJ1712S_Reg_516	Configure/enable SAE in WPA3 UI page	To configure/enable SAE in WPA3 UI page	Passed	
EWLCJ1712S_Reg_517	Verify enabling 802.1x and SAE together FT is disabled	To verify enabling 802.1x and SAE together FT is disabled	Passed	
EWLCJ1712S_Reg_518	Verify weather the Client connected	To verify weather the Client connected	Passed	
EWLCJ1712S_Reg_519	Verify the Client connected with wrong psk	To verify the Client is connected to wrong psk	Passed	
EWLCJ1712S_Reg_520	Check the Client connected to wrong psk in 4 times	To check the Client connected to wrong psk in 4 times	Passed	
EWLCJ1712S_Reg_521	Check the Client is excluded after giving wrong psk multiple times	To check the Client excluded after giving wrong psk with multiple times	Passed	
EWLCJ1712S_Reg_522	check the Client is connected successfully	To check the Client is connected successfully	Passed	
EWLCJ1712S_Reg_523	verify the logs are generated while connecting the Client	To verify the logs are generated while connecting the Client	Passed	
EWLCJ1712S_Reg_524	Monitor the client is connected	To monitor the Client is connected	Passed	

WPA3 Supporting 'Transition Disable'

Logical ID	Title	Description	Status	Defect ID
EWLCJ1712S_Reg_70	Configuring Access Points & radio parameters for 5GHz band with WPA3 & transition disable option enabled.	To configure Access Points & radio parameters for 5GHz band with WPA3 & transition disable option enabled.	Passed	
EWLCJ1712S_Reg_71	Configuring Access Points & radio parameters for 2.4GHz band with WPA3 & transition disable option enabled.	To configure Access Points & radio parameters for 2.4GHz band with WPA3 & transition disable option enabled.	Passed	
EWLCJ1712S_Reg_72	Verifying WPA3/Transition Disable details with 11ax Android Client connected.	To verify WPA3/Transition Disable details with 11ax Android Client connected.	Passed	
EWLCJ1712S_Reg_73	Verifying WPA3/Transition Disable details with 11ax iPhone Client connected.	To verify WPA3/Transition Disable details with 11ax iPhone Client connected.	Passed	
EWLCJ1712S_Reg_74	Verifying the WPA3/Transition Disable details with Windows Client connected.	To verify the WPA3/Transition Disable details with non 11ax Windows Client connected.	Passed	
EWLCJ1712S_Reg_75	Verifying the WPA3/Transition Disable details with MAC Client connected.	To verify the WPA3/Transition Disable details with non 11ax MAC Client connected.	Passed	
EWLCJ1712S_Reg_76	Verify WPA3/Transition Disable details by connecting Client to 2.4GHz radio.	To verify WPA3/Transition Disable details by connecting Client to 2.4GHz radio.	Passed	
EWLCJ1712S_Reg_77	Verifying the WPA3 support with SAE Auth key.	To verify the WPA3 support with SAE Auth key.	Passed	

EWLCJ1712S_Reg_78	Verifying the WPA3 support with SAE security key by connecting the windows Client.	To verify the WPA3 support with SAE security key by connecting the windows Client.	Passed	
EWLCJ1712S_Reg_79	Verifying the WPA3 support with SAE security key by connecting the Android Client.	To verify the WPA3 support with SAE security key by connecting the Android Client.	Passed	
EWLCJ1712S_Reg_80	Verifying the WPA3 support with SAE security key by connecting the MAC os Client.	To verify the WPA3 support with SAE security key by connecting the MAC os Client.	Passed	
EWLCJ1712S_Reg_81	Verifying the WPA3 support with SAE and PSK security key.	To verify the WPA3 support with SAE and PSK security key.	Passed	
EWLCJ1712S_Reg_82	Verifying the WPA3 support with SAE and 802.1x security key.	To verify the WPA3 support with SAE and 802.1x security key.	Passed	
EWLCJ1712S_Reg_83	Validating the WPA3 support with SAE and Layer 3 Splash page web redirect	To validate the WPA3 support with SAE and Layer 3 Splash page web redirect	Passed	
EWLCJ1712S_Reg_84	Validating the WPA3 support with SAE and Layer 3 On MAC filter failure.	To validate the WPA3 support with SAE and Layer 3 On MAC filter failure.	Passed	
EWLCJ1712S_Reg_85	verifying the WPA3 support with SAE and PMF PSK Auth key.	To verify the WPA3 support with SAE and PMF PSK Auth key.	Passed	
EWLCJ1712S_Reg_86	Verifying the WPA3 support with 802.1x security.	To verify the WPA3 support with 802.1x security.	Passed	
EWLCJ1712S_Reg_87	Verifying the WPA3 support with 802.1x and CCKM security.	To verify the WPA3 support with 802.1x and CCKM security.	Failed	CSCwf24083
EWLCJ1712S_Reg_88	Verifying the WPA3 support with Ft+802.1x security.	To verify the WPA3 support with Ft+802.1x security.	Passed	

EWLCJ1712S_Reg_89	Verifying the WPA3 support with Intra Client roaming by using 9115AP	To verify the WPA3 support with Intra Client roaming by using 9115AP	Passed	
EWLCJ1712S_Reg_90	Verifying the WPA3 support and SAE security with Inter WLC Roaming	To verify the WPA3 support and SAE security with Inter WLC Roaming	Passed	
EWLCJ1712S_Reg_91	Verifying the WPA3 support Roaming between Controllers	To verify the WPA3 support Roaming between Controllers with same Radio types	Passed	
EWLCJ1712S_Reg_92	Verifying the WPA3 support with SAE Auth key in local auth and local switching.	To verify the WPA3 support with SAE Auth key in local auth and local switching.	Passed	
EWLCJ1712S_Reg_93	Ensure transition disable compatibility with other WPA security modes	To verify transition disable compatibility with other WPA security modes	Passed	
EWLCJ1712S_Reg_94	Verifying WPA3/Transition Disable details with Surface Client connected.	To verify WPA3/Transition Disable details with Surface Client connected.	Passed	

SRCFD

Logical ID	Title	Description	Status	Defect ID
EWLCJ1712S_SR_1	C9800 not follow the DCA Sensitivity threshold	to configure RRM parameters 5GHz Band	Passed	
EWLCJ1712S_SR_2	C9800 not follow the DCA Sensitivity threshold	to configure RRM parameters 2.4 GHz Band	Passed	
EWLCJ1712S_SR_3	Configure DCA sensitivity threshold in 9800-40 controller	to Configure DCA sensitivity threshold in 9800-40 controller	Passed	
EWLCJ1712S_SR_4	Configure DCA sensitivity threshold in 9800-80 controller with higher series Aps	to Configure DCA sensitivity threshold in 9800-80 controller with higher series Aps	Passed	
EWLCJ1712S_SR_5	Configure RRM DCA in CLI mode	to Configure RRM DCA in CLI mode	Passed	
EWLCJ1712S_SR_6	Configure HA setup for 9800-80	To configure HA setup for 9800-80	Passed	
EWLCJ1712S_SR_7	Switchover HA setup and verify status	To verify HA setup switchover	Passed	
EWLCJ1712S_SR_8	Verify any crashes generated after configuring debug all command	To check any crashes generated or not	Passed	
EWLCJ1712S_SR_9	ISSU upgrade with HA SSO RMI	To perform ISSU upgrade in HA SSO RMI setup and monitor behaviour	Passed	
EWLCJ1712S_SR_10	Check HA RMI Parameters	To Check HA RMI in GUI	Passed	
EWLCJ1712S_SR_11	Validate the HA setup parameters.	To validate the HA setup parameters and configuration guidelines	Passed	
EWLCJ1712S_SR_12	Validate the HA RMI parameters.	To validate the HA RMI parameters.	Passed	

EWLCJ1712S_SR_13	Enable Redundancy and check HA RMI	To enable Redundancy and check HA RMI parameters in GUI and configuration guidelines	Passed	
EWLCJ1712S_SR_14	Enable Redundancy and check HA RP	To enable Redundancy and check HA RP parameters in GUI and configuration guidelines	Passed	
EWLCJ1712S_SR_15	Check 9130-AP whether crash is occurred or not	To check 9166 ap whether crash is occurred or not	Passed	
EWLCJ1712S_SR_16	Check 9124-AP whether crash is occurred or not	To check 9164-AP whether crash is occurred or not	Passed	
EWLCJ1712S_SR_17	Check 9115-AP whether crash is occurred or not	To check 9115-AP whether crash is occurred or not	Passed	
EWLCJ1712S_SR_18	Verify any crashes generated for 9105 AP while configuring radio role	To verify any crashes generated for 9105 AP	Passed	
EWLCJ1712S_SR_19	Verify any crashes generated for 9115 AP while configuring radio role	To verify any crashes generated for 9115 AP	Passed	
EWLCJ1712S_SR_20	Verify any crashes generated for 9120 AP while configuring radio role	To verify any crashes generated for 9120 AP	Passed	
EWLCJ1712S_SR_21	Verify any crashes generated for 9130 AP while configuring radio role	To verify any crashes generated for 9130 AP	Passed	
EWLCJ1712S_SR_22	Checking the Android client connectivity for 2.4 Ghz radio with DFS enable	To verify the client connection status based in 2.4 Ghz radio with DFS enabled	Passed	

EWLCJ1712S_SR_23	Checking the windows client connectivity for 5 Ghz radio with DFS enable	To verify the client connection status based in 5 Ghz radio with DFS enabled	Passed	
EWLCJ1712S_SR_24	Checking the Surface Go client connectivity for 2.4/5 Ghz radio with DFS enabled	To verify the client connection status based in 2.4 and 5 G radio with DFS enabled	Passed	
EWLCJ1712S_SR_25	Set the throughput values for 6 /5/2.4 Ghz radio & checking the windows client connectivity	To check the throughput values for 6/5/2.4 Ghz radio	Passed	
EWLCJ1712S_SR_26	Set the RRM Neighbour Discover Mode as auto and verify the RRM parameters	To verify the RRM parameters	Passed	
EWLCJ1712S_SR_27	Verifying the Beacon & probe frames after windows client with local mode association	To verify the Beacon & probe frames in Wireshark	Passed	
EWLCJ1712S_SR_28	Verifying the Beacon & probe frames after Android client with flex mode association	To verify the Beacon & probe frames in Wireshark	Passed	
EWLCJ1712S_SR_29	Verify load average warning is displayed 9800 -CL Controller	To verify when 9800-CL Controller is healthy doesn't shown any warning	Passed	
EWLCJ1712S_SR_30	Verify load average warning is displayed 9800 -L Controller	To verify when 9800-L Controller is healthy doesn't shown any warning	Passed	
EWLCJ1712S_SR_31	Verify load average warning is displayed 9800 -80 Controller	To verify when 9800-80 Controller is healthy doesn't shown any warning	Passed	

EWLCJ1712S_SR_32	Upgrade 9105AP joined eWLC	To check any crashes/Kernal panic generated or not after upgrade	Passed	
EWLCJ1712S_SR_33	Upgrade 9115AP joined eWLC	To check any crashes/Kernal panic generated or not after upgrade	Passed	
EWLCJ1712S_SR_34	Upgrade 9120AP joined eWLC	To check any crashes/Kernal panic generated or not after upgrade	Passed	
EWLCJ1712S_SR_35	Upgrade 9130AP joined eWLC	To check any crashes/Kernal panic generated or not after upgrade	Passed	
EWLCJ1712S_SR_36	Do Image bootup in C9120AXI (17.12) controller and check for critical message	To Do Image bootup in C9120AXI(17.12) controller and check for critical message	Passed	
EWLCJ1712S_SR_37	Do Image bootup in C9120AXI (17.12) controller and check for critical message	To Do Image bootup in C9120AXI(17.12) controller and check for critical message	Passed	
EWLCJ1712S_SR_38	Do Image bootup in C9115AXI (17.12) controller and check for critical message	To Do Image bootup in C9115AXI(17.12) controller and check for critical message	Passed	
EWLCJ1712S_SR_39	Do Image bootup in C9115AXI (17.12) controller and check for critical message	To Do Image bootup in C9115AXI(17.12) controller and check for critical message	Passed	
EWLCJ1712S_SR_40	Do Image bootup in C9105AXI (17.12) controller and check for critical message	To Do Image bootup in C9105AXI(17.12) controller and check for critical message	Passed	
EWLCJ1712S_SR_41	Do Image bootup in C9115AXI (17.12) controller and check for critical message	To Do Image bootup in C9115AXI(17.12) controller and check for critical message	Passed	

EWLCJ1712S_SR_42	Upgrade the AP to latest image	To upgrade the AP to latest image	Passed	
EWLCJ1712S_SR_43	When AP changes from one mode to another mode	To when AP changes from one mode to another mode	Passed	
EWLCJ1712S_SR_44	Reboot the AP	To Reboot the AP	Passed	
EWLCJ1712S_SR_45	Downgrade and Upgrade the controller with latest image	To check any crash occurred or not while upgrade with new image	Passed	
EWLCJ1712S_SR_46	Check free space in boot flash	To check free space in boot flash for upgrade	Passed	
EWLCJ1712S_SR_47	Upgrade the controller with latest build	To upgrade and downgrade the controller with latest build	Passed	
EWLCJ1712S_SR_48	Check the Upgrade 9130 ap with latest image	To Verify core file generated or not while ap reload	Passed	
EWLCJ1712S_SR_49	Add files in boot flash	To add the files in boot flash	Passed	CSCwf62671
EWLCJ1712S_SR_50	Check for 2.4 ghz radio	To check for 2.4 ghz radio	Passed	
EWLCJ1712S_SR_51	Check for 5 ghz radio	To check for 5 ghz radio	Passed	
EWLCJ1712S_SR_52	Check for 6 ghz radio	To check for 6 ghz radio	Passed	
EWLCJ1712S_SR_53	Connect 2802 Model AP with eWLC	To connect 2802 AP to eWLC with latest image and check if the AP gets associated or not	Passed	
EWLCJ1712S_SR_54	Join AP 9166I/ AP9164I to one controller	Adding AP 9166I/ AP9164I to the controller using CLI.	Passed	
EWLCJ1712S_SR_55	Create A Wlan profile with MU-MIMO Enabled	Create A Wlan profile with MU-MIMO Enabled	Passed	

EWLCJ1712S_SR_56	Configuring the 802.11ac High-Throughput Parameters (CLI)	to Configure the 802.11ac High-Throughput Parameters (CLI)	Passed	
EWLCJ1712S_SR_57	Configuring MU-MIMO (CLI)	Configuring MU-MIMO (CLI)	Passed	
EWLCJ1712S_SR_58	Configuring 11ax Access Points, Channel width, 11ax MU-MIMO & radio parameters for 5Ghz band.	To configure 11ax Access Points, Channel width, 11ax MU-MIMO & radio parameters for 5Ghz band.	Passed	
EWLCJ1712S_SR_59	Configuring 11ax Access Points, Channel width, 11ax MU-MIMO & radio parameters for 2.4Ghz band.	To configure 11ax Access Points, Channel width, 11ax MU-MIMO & radio parameters for 2.4Ghz band.	Passed	
EWLCJ1712S_SR_60	Verifying details with 11ax Android client connected.	To verify 11ax MU-MIMO details with 11ax Android client connected.	Passed	
EWLCJ1712S_SR_61	Join 2802AP and verify radio crashes	To join 2802AP and verify radio crashes	Passed	
EWLCJ1712S_SR_62	Join 3800AP and verify radio crashes	To join 3800AP and verify radio crashes	Passed	
EWLCJ1712S_SR_63	Join 4800AP and verify radio crashes	To join 4800AP and verify radio crashes	Passed	
EWLCJ1712S_SR_64	Check AP connectivity with client upon association via 5Ghz radio	To check AP connectivity with client upon association via 5Ghz radio	Passed	
EWLCJ1712S_SR_65	Check C9105 AP info upon AP unplug & connect to controller	To check if AP joins eWLC automatically upon after initial connect & unplug with switch	Passed	
EWLCJ1712S_SR_66	Check C9115 AP info upon AP unplug & connect to controller	To check if AP joins eWLC automatically upon after initial connect & unplug with switch	Passed	

EWLCJ1712S_SR_67	Check C9120 AP info upon AP unplug & connect to controller	To check if AP joins eWLC automatically upon after initial connect & unplug with switch	Passed	
EWLCJ1712S_SR_68	Check certified validation in HA controller	To check certified validation in HA controller	Passed	
EWLCJ1712S_SR_69	Check certified validation in 9800-CL-controller	To check certified validation in 9800-CL-controller	Passed	
EWLCJ1712S_SR_70	Check certified validation in 9800-L-controller	To check certified validation in 9800-L-controller	Passed	
EWLCJ1712S_SR_71	JA Locale : wlan/other dropdown textbox popup issue (Only English ASCII characters allowed)	JA Locale : to configure wlan	Passed	
EWLCJ1712S_SR_72	configure security parameters depending on whether the device is configured for Layer 2	to configure security parameters depending on whether the device is configured for Layer 2	Passed	
EWLCJ1712S_SR_73	configure PMP	to configure PMP	Passed	
EWLCJ1712S_SR_74	configure WPA Parameters	to configure WPA Parameters	Passed	
EWLCJ1712S_SR_75	enable WPA2 policy	to enable WPA2 policy	Passed	
EWLCJ1712S_SR_76	enable WPA3 policy	to enable WPA3 policy	Passed	
EWLCJ1712S_SR_77	configure Static WEP Parameters	Static WEP Parameters	Passed	
EWLCJ1712S_SR_78	configure web policy in layer 3	to configure web policy in layer 3	Passed	
EWLCJ1712S_SR_79	Verify if kernel panic error occurs during AP bootup	To verify if hosted process comes up during AP bootup	Passed	

EWLCJ1712S_SR_80	Verify client connectivity on channel addition/deletion for 11ax protocol	To verify client connectivity on channel addition/deletion for 11ax protocol	Passed	
EWLCJ1712S_SR_81	Verify client connectivity on channel addition/deletion for 5Ghz 11ac protocol	To verify client connectivity on channel addition/deletion for 11ac protocol	Passed	
EWLCJ1712S_SR_82	Verify client connectivity on channel addition/deletion for 11n protocol	To verify client connectivity on channel addition/deletion for 11n protocol	Passed	
EWLCJ1712S_SR_83	Rebooting the 9130 AP	To check if the AP gets Rebooted after upgrading are not	Passed	
EWLCJ1712S_SR_84	Downgrade and Upgrade the controller with latest image	To check any crash occurred or not while upgrade with latest image	Passed	
EWLCJ1712S_SR_85	Change the AP mode into Local mode	To change the AP mode into Local mode and verify 9130 AP upgrade without rebooting	Passed	
EWLCJ1712S_SR_86	Change the AP mode into Flex mode	To change the AP mode into Flex mode and verify 9130 AP upgrade without rebooting	Passed	
EWLCJ1712S_SR_87	Change the AP mode into Monitor mode	To change the AP mode into Monitor mode and verify 9130 AP upgrade without rebooting	Passed	
EWLCJ1712S_SR_88	Change the AP mode into Sniffer mode	To change the AP mode into Sniffer mode and verify 9130 AP upgrade without rebooting	Passed	

EWLCJ1712S_SR_89	Checking the AP Radio after DCA Mode change	To check the AP Radio after changing DCA mode and check 9130 AP upgrade without rebooting	Passed	
EWLCJ1712S_SR_90	Different data rates are observed in CLI and RF profiles with 2.4GHz	To configure & check data rates in CLI and RF Profiles for High Client Density rfprofile on 2.4GHz radio and check 9130 AP upgrade without rebooting	Passed	
EWLCJ1712S_SR_91	Different data rates are observed in CLI and RF profiles with 5GHz	To configure & check data rates in CLI and RF Profiles for High Client Density rfprofile on 5GHz radio and check 9130 AP upgrade without rebooting	Passed	
EWLCJ1712S_SR_92	Associate windows client flex mode and perform roaming	Verify client connected or not with 9105 ap	Passed	
EWLCJ1712S_SR_93	Associate android client flex mode and perform roaming	Verify checking channel utilization during client connectivity	Passed	
EWLCJ1712S_SR_94	Associate mac client flex mode and perform roaming	Verify crash happened or not during continue reload	Passed	
EWLCJ1712S_SR_95	Associate iOS client flex mode and perform roaming	Verify crash happened or not during client connectivity	Passed	
EWLCJ1712S_SR_96	Upgrade the 9120 ap with latest image	Verify core file generated or not while image upgrade	Passed	
EWLCJ1712S_SR_97	Upgrade the 9130 ap with latest image	Verify core file generated or not while image upgrade	Passed	

EWLCJ1712S_SR_98	Upgrade the 9115 ap with latest image	Verify core file generated or not while image upgrade	Passed	
EWLCJ1712S_SR_99	Upgrade the 9105 ap with latest image	Verify core file generated or not while image upgrade	Passed	
EWLCJ1712S_SR_100	Do Reset on 9115 AP and check for any crash	to do Reset on 9115 AP and check for any crash	Passed	
EWLCJ1712S_SR_101	Changing the Tags of 9115 AP and check for crash due to Kernal panic	To changing the Tags of 9115 AP and check for crash due to Kernal panic	Passed	
EWLCJ1712S_SR_102	Connect client to 9115 AP and check for crash	To connect client to 9115 AP and check for crash	Passed	
EWLCJ1712S_SR_103	Upgrade and downgrade the controller and check any AP crash is seen	To upgrade and downgrade the controller and check any AP crash is seen	Passed	
EWLCJ1712S_SR_104	Resetting the 9130 AXI APs	To resetting the 9120 AXI APs	Passed	
EWLCJ1712S_SR_105	Change the Country Code in Ap	To change the Country Code in 9120 AP	Passed	
EWLCJ1712S_SR_106	Mapping the policy tag and rf tags in AP	To mapping the policy tag and rf tags in AP	Passed	
EWLCJ1712S_SR_107	Check AP info upon AP unplug & connect to switch	To check if AP joins eWLC automatically upon after initial connect & unplug with switch	Passed	
EWLCJ1712S_SR_108	Upgrade AP to different image and check if it comes up without crash	To upgrade AP to different image and check if it comes up without crash	Passed	
EWLCJ1712S_SR_109	Check AP info upon AP factory reset, unplug & connect to switch	To check if AP joins eWLC automatically upon after initial connect, factory reset & unplug with switch	Passed	

EWLCJ1712S_SR_110	Check AP info upon AP unplug & connect to switch for catalyst 9100 AP's	To check if different models of AP join eWLC automatically upon after initial connect & unplug with switch	Passed	
EWLCJ1712S_SR_111	Verify if kernel panic error occurs during AP bootup	To verify if hosted process comes up during AP bootup	Passed	
EWLCJ1712S_SR_112	Check AP Crash occurred for 2.4ghz band	To Check AP crash occurred for 2.4ghz	Passed	
EWLCJ1712S_SR_113	Check AP Crash occurred for 5ghz band	To Check AP Crash occurred for 5ghz	Passed	
EWLCJ1712S_SR_114	Check AP Crash occurred for 6ghz band	To Check AP Crash occurred for 6ghz	Passed	
EWLCJ1712S_SR_115	Cisco 9130AP does not transmit EAP identify Request	check ap working properly or not if the rf profile is for 6 ghz	Passed	
EWLCJ1712S_SR_116	Cisco 9130AP does not transmit EAP identify Request	check ap working properly or not if the rf profile is for 2.4 ghz	Passed	
EWLCJ1712S_SR_117	Cisco 9130AP does not transmit EAP identify Request	check ap working properly or not if the rf profile is for 5 ghz	Passed	
EWLCJ1712S_SR_118	connect android client with 9120 ap for dot1x security	Verify Client connected or not	Passed	
EWLCJ1712S_SR_119	connect windows client with 9130 ap for dot1x security	Verify Client connected or not	Passed	
EWLCJ1712S_SR_120	connect mac client with 9105 ap for dot1x security	Verify Client connected or not	Passed	
EWLCJ1712S_SR_121	connect iOS client with 9115 ap for dot1x security	Verify Client connected or not	Passed	
EWLCJ1712S_SR_122	connect Android client with local security	Verify checking channel utilization during client connectivity	Passed	

EWLCJ1712S_SR_123	Associate Android10 mobile with 9120 AP and perform roaming	Verify client connected or not with 9120 ap	Passed	
EWLCJ1712S_SR_124	Associate Android 10 mobile with 9130 AP and perform roaming	Verify client connected or not with 9130 ap	Passed	
EWLCJ1712S_SR_125	Associate Android 10 with 9115 AP and perform roaming	Verify client connected or not with 9115 ap	Passed	
EWLCJ1712S_SR_126	show ntp command - shows unsynchronized even though successfully	Setting Device Time	Passed	
EWLCJ1712S_SR_127	Adding NTP Servers	to Add NTP Servers	Passed	
EWLCJ1712S_SR_128	to Create Authentication Key	Creating Authentication Key	Passed	
EWLCJ1712S_SR_129	Check NTP status in command mode	to Check NTP status in command mode	Passed	
EWLCJ1712S_SR_130	Check 9124 AP rebooted and collect logs	To check 9124 AP rebooted and collect logs	Passed	
EWLCJ1712S_SR_131	Check 9130 AP rebooted and collect logs	To Check 9130AP rebooted and collect logs	Passed	
EWLCJ1712S_SR_132	Check 9120 AP rebooted and collect logs	To Check 9120 AP rebooted and collect logs	Passed	
EWLCJ1712S_SR_133	Check whether able to access ap shell from 9124 AP	To check whether the 9124 EWC AP able to access ap shell	Passed	
EWLCJ1712S_SR_134	Check whether able to access ap shell from 9115 AP	To check whether the 9115 EWC AP able to access ap shell	Passed	
EWLCJ1712S_SR_135	Check whether able to access ap shell from 9130 AP	To check whether the 9130 EWC AP able to access ap shell	Passed	

EWLCJ1712S_SR_136	Change the 2.4 ghz RF channel assignment Global to custom for C9130AP	To change the 2.4 ghz RF channel assignment Global to custom for C9130AP and connect the client	Passed	
EWLCJ1712S_SR_137	Change the 5 ghz RF channel assignment Global to custom for C9130AP	To change the 5 ghz RF channel assignment Global to custom for C9130AP and connect the client	Passed	
EWLCJ1712S_SR_138	Connect 9130 AP in 9800-L controller and check channel list	To connect 9130 AP in 9800-L controller and check channel list is shown right	Passed	
EWLCJ1712S_SR_139	Connect 9130 AP in 9800-80 controller and check channel list	To connect 9130 AP in 9800-80 controller and check channel list is shown right	Passed	
EWLCJ1712S_SR_140	Verify if kernel panic error occurs during AP bootup	To verify if hosted process comes up during AP bootup	Passed	
EWLCJ1712S_SR_141	Verify client connectivity on channel addition/deletion for 11ax protocol	To verify client connectivity on channel addition/deletion for 11ax protocol	Passed	
EWLCJ1712S_SR_142	Verify client connectivity on channel addition/deletion for 5Ghz 11ac protocol	To verify client connectivity on channel addition/deletion for 11ac protocol	Passed	
EWLCJ1712S_SR_143	Verify client connectivity on channel addition/deletion for 11n protocol	To verify client connectivity on channel addition/deletion for 11n protocol	Passed	
EWLCJ1712S_SR_144	perform and connect 9120 AP with Sniffer mode in 5 ghz	To perform and connect 9120 AP with sniffer mode and connect with client device	Passed	

EWLCJ1712S_SR_145	perform and connect 9120 AP with Local mode in 5 ghz	To perform and connect 9120 AP with local mode and connect with client device	Passed	
EWLCJ1712S_SR_146	perform and connect 9166 AP with Local mode in 5 ghz	To perform and connect 5 Ghz with 9166 Ap and connect with client	Passed	
EWLCJ1712S_SR_147	Association of 2800 series AP with different eWLC model	To associate 2800 series AP to eWLC with latest image and check if the AP gets associated or not	Passed	
EWLCJ1712S_SR_148	Associating 2800 series AP with different country code as with eWLC	To associate 2800 series AP with different country code and check if the AP does not get joined to eWLC	Passed	
EWLCJ1712S_SR_149	Configuring AP with duplicate IP	To configure AP with a duplicate IP address and check if the AP shows error message and AP does not join the eWLC	Passed	
EWLCJ1712S_SR_150	Rebooting the 2800 AP	To check if the AP gets Rebooted or not and check if the AP joins the controller again.	Passed	
EWLCJ1712S_SR_151	Rebooting the AP with primary controller given in High Availability	To reboot the AP by giving the primary controller IP using high availability and check if the AP joins the primary controller	Passed	
EWLCJ1712S_SR_152	Checking the details of the AP through the CLI	To check the details of the AP using CLI and check if the details are correctly shown or not	Passed	

EWLCJ1712S_SR_153	Connecting a Window client to the 2800 series AP	To connect a window client to the AP and check if the client gets connected to the AP without any errors.	Passed	
EWLCJ1712S_SR_154	Cisco 9120 AP unexpectedly reloads due to Radio driver	check if the rf profile is for 2.4 ghz	Passed	
EWLCJ1712S_SR_155	Cisco 9120 AP unexpectedly reloads due to Radio driver	check if the rf profile is for 5 ghz	Passed	
EWLCJ1712S_SR_156	Cisco 9120 AP unexpectedly reloads due to Radio driver	check if the rf profile is 6 ghz	Passed	
EWLCJ1712S_SR_157	Join AP 9120 and check whether it is disconnected or not.	Check able to join without disconnecting	Passed	
EWLCJ1712S_SR_158	Join AP 9130 and check whether it is disconnected or not.	Check able to join without disconnecting	Passed	
EWLCJ1712S_SR_159	Join AP 9115 and check whether it is disconnected or not.	Check able to join without disconnecting	Passed	
EWLCJ1712S_SR_160	Join AP 9105 and check whether it is disconnected or not.	Check able to join without disconnecting	Passed	
EWLCJ1712S_SR_161	Upgrade and downgrade the controller and check any no space alert generated	To do image upgrade and downgrade and check any no space alert generated	Passed	
EWLCJ1712S_SR_162	reload the controller several time and check any no space alert generated	To do controller reload several time and check any no space alert generated	Passed	
EWLCJ1712S_SR_163	Connect clients and collect debugs and check any no space alert generated	To do client connectivity and collect debugs and check any no space alert generated	Passed	

EWLCJ1712S_SR_164	Check 9120 Ap working properly after upgrade	To Check 9120 Ap working properly after upgrade	Passed	
EWLCJ1712S_SR_165	Check 9130 Ap working properly after upgrade	To Check 9130 Ap working properly after upgrade	Passed	
EWLCJ1712S_SR_166	Check 9115 Ap working properly after upgrade	To Check 9115 Ap working properly after upgrade	Passed	
EWLCJ1712S_SR_167	Verify9120 AP and check the EAP packet downstream to client intermittently	To perform 9120 AP check the EAP packet downstream to client intermittently	Passed	
EWLCJ1712S_SR_168	Verify9120 AP and check the EAP packet downstream to client intermittently	To perform 9120 AP check the EAP packet downstream to client intermittently	Passed	
EWLCJ1712S_SR_169	Verify9115 AP and check the EAP packet downstream to client intermittently	To perform 9120 AP check the EAP packet downstream to client intermittently	Passed	
EWLCJ1712S_SR_170	Verify9105 AP and check the EAP packet downstream to client intermittently	To perform 9120 AP check the EAP packet downstream to client intermittently	Passed	
EWLCJ1712S_SR_171	Upgrade DNAC with latest image	Verify image downloaded and upgraded to latest version or not	Passed	
EWLCJ1712S_SR_172	Perform continuous reload and verify the version details	Verify image downloaded and upgraded to latest version or not after continuous reload	Passed	
EWLCJ1712S_SR_173	Upgrade packages and verify the image version	Verify package updated or not	Passed	
EWLCJ1712S_SR_174	Do Reset on 9124 AP and check for any crash due to out of memory	To do Reset on 9130 AP and check for any crash out of memory	Passed	

EWLCJ1712S_SR_175	Changing the Tags of 9124 AP and check for crash due to Kernal panic	To changing the Tags of 9124 AP and check for crash due to Kernal panic	Passed	
EWLCJ1712S_SR_176	Connect client to 9124 AP and check for crash	To connect client to 9124 AP and check for crash	Passed	
EWLCJ1712S_SR_177	Check free space in boot flash	To check space in boot flash for upgrade	Passed	
EWLCJ1712S_SR_178	Upgrade the controller with latest build	To upgrade and downgrade the controller with latest build	Passed	
EWLCJ1712S_SR_179	Upgrade and downgrade the controller and check any AP crash is seen	To upgrade and downgrade the controller and check any AP crash is seen due to out of memory	Passed	
EWLCJ1712S_SR_180	Check 9120 radio 1 gets stuck in Tx	To 9120 radio 1 gets stuck in Tx	Passed	
EWLCJ1712S_SR_181	Check 9130 radio 1 gets stuck in Tx	To Check 9130 radio 1 gets stuck in Tx	Passed	
EWLCJ1712S_SR_182	Check 9115 radio 1 gets stuck in Tx	To Check 9120 radio 1 gets stuck in Tx	Passed	
EWLCJ1712S_SR_183	Upgrade AP to different image and check if it comes up without crash	To upgrade AP to different image and check if it comes up without crash	Passed	
EWLCJ1712S_SR_184	Verify if kernel panic error occurs during AP bootup	To verify if hosted process comes up during AP bootup	Passed	
EWLCJ1712S_SR_185	Check AP info upon AP factory reset, unplug & connect to switch	To check if AP joins eWLC automatically upon after initial connect, factory reset & unplug with switch	Passed	

EWLCJ1712S_SR_186	Check AP info upon AP unplug & connect to switch for catalyst 9100 AP's	To check if different models of AP join eWLC automatically upon after initial connect & unplug with switch	Passed	
EWLCJ1712S_SR_187	9120 AP with 2.4 Ghz band and connect client	To connect 9120 AP with 2.4 Ghz band and connect client device	Passed	
EWLCJ1712S_SR_188	Connect 9130 AP with more client devices	To connect 9130 AP with more client devices	Passed	
EWLCJ1712S_SR_189	Connect 9164 AP with more client devices	To connect 9164 AP with more client devices	Passed	
EWLCJ1712S_SR_190	Connect 9166 AP with more client devices	To connect 9166 AP with more client devices	Passed	
EWLCJ1712S_SR_191	Join 9120 AP & check reloaded or not	Check able to join 9120 AP	Passed	
EWLCJ1712S_SR_192	Configure tags & map to AP	To verify ap is reloaded or not after tag mapping.	Passed	
EWLCJ1712S_SR_193	Join 9130 AP & check reloaded or not	Check able to join 9130 AP	Passed	
EWLCJ1712S_SR_194	Join 9115 AP & check reloaded or not	Check able to join 9115 AP	Passed	
EWLCJ1712S_SR_195	Upgrade DNAC with latest image	Verify image downloaded and upgraded to latest version or not	Passed	
EWLCJ1712S_SR_196	Perform continuous reload and verify the version details	Verify image downloaded and upgraded to latest version or not after continuous reload	Passed	
EWLCJ1712S_SR_197	Upgrade packages and verify the image version	Verify package updated or not	Passed	

EWLCJ1712S_SR_198	Join 9166 AP & check whether it is joined or not	Check able to join 9166 AP	Passed	
EWLCJ1712S_SR_199	Join 9164 AP & check whether it is joined or not	Check able to join 9164 AP	Passed	
EWLCJ1712S_SR_200	Join 9105 AP & check whether it is joined or not	Check able to join 9105 AP	Passed	
EWLCJ1712S_SR_201	Join 9130 AP & check whether it is joined or not	Check able to join 9130 AP	Passed	



Related Documents

- [Related Documentation, on page 178](#)

Related Documentation

Cisco Catalyst 9800 Series Wireless Controller Software Configuration Guide

https://www.cisco.com/c/en/us/td/docs/wireless/controller/9800/17-12/config-guide/b_wl_17_12_cg.html

Cisco Catalyst 9800 Series Wireless Controller 17.12 Configuration Guide

https://www.cisco.com/c/en/us/td/docs/wireless/controller/9800/17-12/config-guide/b_wl_17_12_cg.html

Cisco Catalyst 9800 Series Wireless Controller 17.12 Release Notes

<https://www.cisco.com/c/en/us/td/docs/wireless/controller/9800/17-12/release-notes/rn-17-12-9800.html>

Release Notes for Cisco Spaces

<https://www.cisco.com/c/en/us/td/docs/wireless/spaces/release-notes/b-cisco-spaces-rn/m-june-2023.html>

Cisco Catalyst 9600 Series Switches 17.12 Release Notes

https://www.cisco.com/c/en/us/td/docs/switches/lan/catalyst9600/software/release/17-12/release_notes/ol-17-12-9600.html

Release Notes Cisco Digital Network Architecture Center

<https://www.cisco.com/c/en/us/td/docs/cloud-systems-management/network-automation-and-management/dna-center-platform/2-3-6/release-notes/b-dnac-platform-rn-2-3-6.html>

PI 3.10 User Guide

https://www.cisco.com/c/en/us/td/docs/net_mgmt/prime/infrastructure/3-10/user/guide/ciscoprimeinfrastructure_3_10_userguide.html

ISE 3.2 Release Notes

https://www.cisco.com/c/en/us/td/docs/security/ise/3-2/release_notes/b_ise_32_RN.html